



wwPDB X-ray Structure Validation Summary Report ⓘ

Nov 5, 2023 – 10:38 pm GMT

PDB ID : 4CUO
Title : Banyan peroxidase with glycosylation
Authors : Palm, G.J.; Sharma, A.; Hinrichs, W.
Deposited on : 2014-03-20
Resolution : 1.67 Å(reported)

This is a wwPDB X-ray Structure Validation Summary Report for a publicly released PDB entry.

We welcome your comments at validation@mail.wwpdb.org

A user guide is available at

<https://www.wwpdb.org/validation/2017/XrayValidationReportHelp>

with specific help available everywhere you see the ⓘ symbol.

The types of validation reports are described at

<http://www.wwpdb.org/validation/2017/FAQs#types>.

The following versions of software and data (see [references ⓘ](#)) were used in the production of this report:

MolProbity : 4.02b-467
Mogul : 1.8.4, CSD as541be (2020)
Xtriage (Phenix) : 1.13
EDS : 2.36
buster-report : 1.1.7 (2018)
Percentile statistics : 20191225.v01 (using entries in the PDB archive December 25th 2019)
Refmac : 5.8.0158
CCP4 : 7.0.044 (Gargrove)
Ideal geometry (proteins) : Engh & Huber (2001)
Ideal geometry (DNA, RNA) : Parkinson et al. (1996)
Validation Pipeline (wwPDB-VP) : 2.36

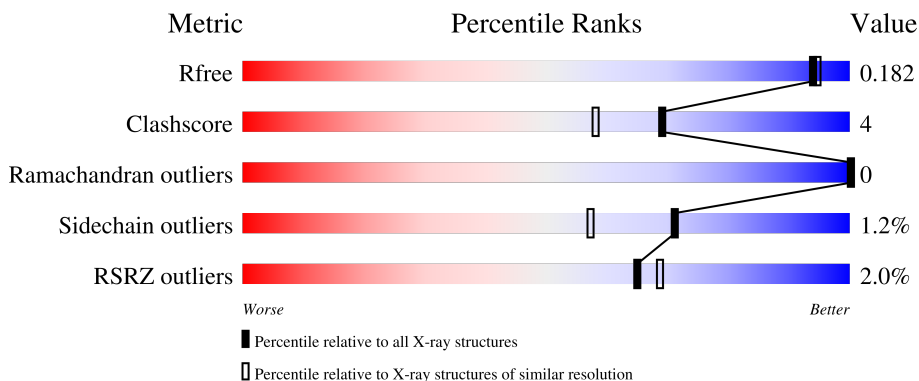
1 Overall quality at a glance

The following experimental techniques were used to determine the structure:

X-RAY DIFFRACTION

The reported resolution of this entry is 1.67 Å.

Percentile scores (ranging between 0-100) for global validation metrics of the entry are shown in the following graphic. The table shows the number of entries on which the scores are based.



Metric	Whole archive (#Entries)	Similar resolution (#Entries, resolution range(Å))
R_{free}	130704	6780 (1.70-1.66)
Clashscore	141614	7310 (1.70-1.66)
Ramachandran outliers	138981	7173 (1.70-1.66)
Sidechain outliers	138945	7172 (1.70-1.66)
RSRZ outliers	127900	6661 (1.70-1.66)

The table below summarises the geometric issues observed across the polymeric chains and their fit to the electron density. The red, orange, yellow and green segments of the lower bar indicate the fraction of residues that contain outliers for ≥ 3 , 2, 1 and 0 types of geometric quality criteria respectively. A grey segment represents the fraction of residues that are not modelled. The numeric value for each fraction is indicated below the corresponding segment, with a dot representing fractions $\leq 5\%$. The upper red bar (where present) indicates the fraction of residues that have poor fit to the electron density. The numeric value is given above the bar.

Mol	Chain	Length	Quality of chain
1	A	306	 2% 91% 9%
2	B	2	 50% 50%
3	C	7	 86% 14%
4	D	3	 100%
4	E	3	 100%

The following table lists non-polymeric compounds, carbohydrate monomers and non-standard residues in protein, DNA, RNA chains that are outliers for geometric or electron-density-fit criteria:

Mol	Type	Chain	Res	Chirality	Geometry	Clashes	Electron density
11	CO3	A	1338	-	X	-	-
2	FUC	B	2	-	-	-	X
6	NAG	A	1320	X	-	-	-
6	NAG	A	1324	X	-	-	-
6	NAG	A	1325	-	-	-	X

2 Entry composition i

There are 12 unique types of molecules in this entry. The entry contains 2989 atoms, of which 0 are hydrogens and 0 are deuteriums.

In the tables below, the ZeroOcc column contains the number of atoms modelled with zero occupancy, the AltConf column contains the number of residues with at least one atom in alternate conformation and the Trace column contains the number of residues modelled with at most 2 atoms.

- Molecule 1 is a protein called BANYAN PEROXIDASE.

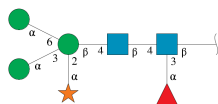
Mol	Chain	Residues	Atoms					ZeroOcc	AltConf	Trace
			Total	C	N	O	S			
1	A	306	2360	1466	405	478	11	0	11	0

- Molecule 2 is an oligosaccharide called alpha-L-fucopyranose-(1-3)-2-acetamido-2-deoxy-beta-D-glucopyranose.



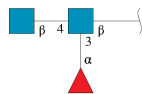
Mol	Chain	Residues	Atoms				ZeroOcc	AltConf	Trace
			Total	C	N	O			
2	B	2	24	14	1	9	0	0	0

- Molecule 3 is an oligosaccharide called alpha-D-xylopyranose-(1-2)-[alpha-D-mannopyranose-(1-3)][alpha-D-mannopyranose-(1-6)]beta-D-mannopyranose-(1-4)-2-acetamido-2-deoxy-beta-D-glucopyranose-(1-4)-[alpha-L-fucopyranose-(1-3)]2-acetamido-2-deoxy-beta-D-glucopyranose.



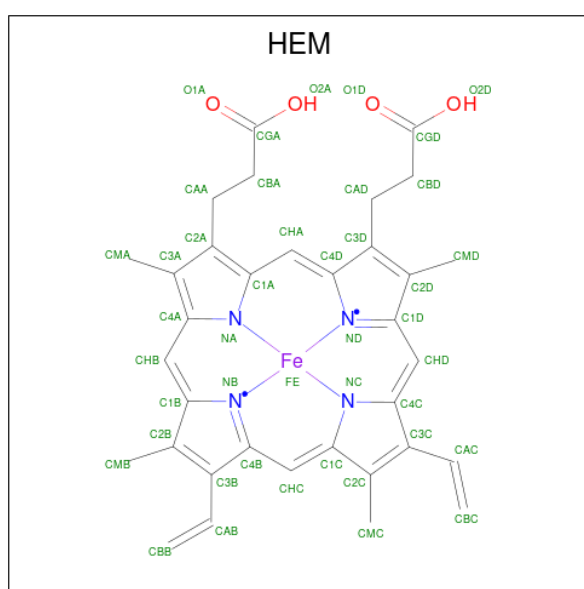
Mol	Chain	Residues	Atoms				ZeroOcc	AltConf	Trace
			Total	C	N	O			
3	C	7	80	45	2	33	0	0	0

- Molecule 4 is an oligosaccharide called alpha-L-fucopyranose-(1-3)-[2-acetamido-2-deoxy-beta-D-glucopyranose-(1-4)]2-acetamido-2-deoxy-beta-D-glucopyranose.



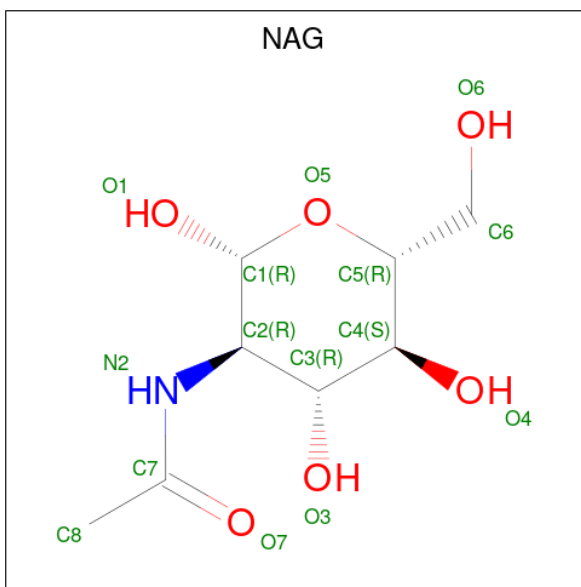
Mol	Chain	Residues	Atoms				ZeroOcc	AltConf	Trace
4	D	3	Total	C	N	O	0	0	0
			38	22	2	14			
4	E	3	Total	C	N	O	0	1	0
			39	22	2	15			

- Molecule 5 is PROTOPORPHYRIN IX CONTAINING FE (three-letter code: HEM) (formula: $C_{34}H_{32}FeN_4O_4$).



Mol	Chain	Residues	Atoms					ZeroOcc	AltConf
5	A	1	Total	C	Fe	N	O	0	0
			43	34	1	4	4		

- Molecule 6 is 2-acetamido-2-deoxy-beta-D-glucopyranose (three-letter code: NAG) (formula: $C_8H_{15}NO_6$).



Mol	Chain	Residues	Atoms				ZeroOcc	AltConf
6	A	1	Total	C	N	O	0	0
			14	8	1	5		
6	A	1	Total	C	N	O	0	0
			14	8	1	5		
6	A	1	Total	C	N	O	0	0
			14	8	1	5		

- Molecule 7 is CALCIUM ION (three-letter code: CA) (formula: Ca).

Mol	Chain	Residues	Atoms		ZeroOcc	AltConf
7	A	2	Total	Ca	0	0
			2	2		

- Molecule 8 is SODIUM ION (three-letter code: NA) (formula: Na).

Mol	Chain	Residues	Atoms		ZeroOcc	AltConf
8	A	1	Total	Na	0	0
			1	1		

- Molecule 9 is CHLORIDE ION (three-letter code: CL) (formula: Cl).

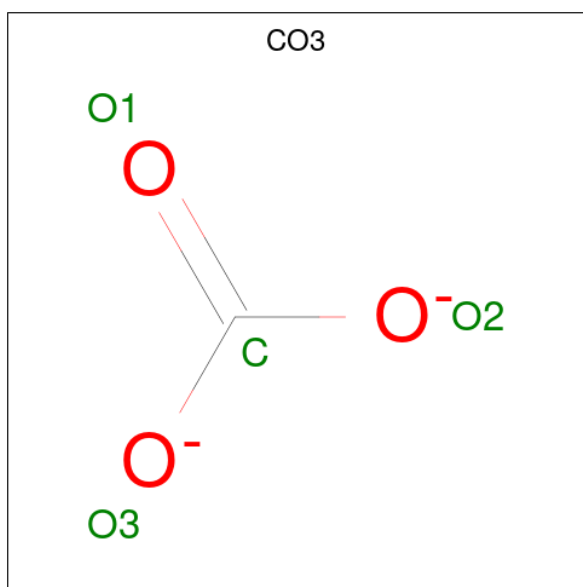
Mol	Chain	Residues	Atoms		ZeroOcc	AltConf
9	A	3	Total	Cl	0	0
			3	3		

- Molecule 10 is SULFATE ION (three-letter code: SO4) (formula: O₄S).



Mol	Chain	Residues	Atoms			ZeroOcc	AltConf
10	A	1	Total	O	S	0	0
			5	4	1		
10	A	1	Total	O	S	0	0
			5	4	1		
10	A	1	Total	O	S	0	0
			5	4	1		

- Molecule 11 is CARBONATE ION (three-letter code: CO3) (formula: CO₃).



Mol	Chain	Residues	Atoms			ZeroOcc	AltConf
11	A	1	Total	C	O	0	0
			4	1	3		

Continued on next page...

Continued from previous page...

Mol	Chain	Residues	Atoms			ZeroOcc	AltConf
11	A	1	Total	C	O	0	0
			4	1	3		
11	A	1	Total	C	O	0	0
			4	1	3		
11	A	1	Total	C	O	0	0
			4	1	3		


- Molecule 12 is water.

Mol	Chain	Residues	Atoms		ZeroOcc	AltConf
12	A	321	Total	O	0	5
			326	326		

3 Residue-property plots

These plots are drawn for all protein, RNA, DNA and oligosaccharide chains in the entry. The first graphic for a chain summarises the proportions of the various outlier classes displayed in the second graphic. The second graphic shows the sequence view annotated by issues in geometry and electron density. Residues are color-coded according to the number of geometric quality criteria for which they contain at least one outlier: green = 0, yellow = 1, orange = 2 and red = 3 or more. A red dot above a residue indicates a poor fit to the electron density ($RSRZ > 2$). Stretches of 2 or more consecutive residues without any outlier are shown as a green connector. Residues present in the sample, but not in the model, are shown in grey.

- Molecule 1: BANYAN PEROXIDASE

Chain A: 




- Molecule 2: alpha-L-fucopyranose-(1-3)-2-acetamido-2-deoxy-beta-D-glucopyranose

Chain B: 



- Molecule 3: alpha-D-xylopyranose-(1-2)-[alpha-D-mannopyranose-(1-3)][alpha-D-mannopyranose-(1-6)]beta-D-mannopyranose-(1-4)-2-acetamido-2-deoxy-beta-D-glucopyranose-(1-4)-[alpha-L-fucopyranose-(1-3)]2-acetamido-2-deoxy-beta-D-glucopyranose

Chain C: 



- Molecule 4: alpha-L-fucopyranose-(1-3)-[2-acetamido-2-deoxy-beta-D-glucopyranose-(1-4)]2-acetamido-2-deoxy-beta-D-glucopyranose

Chain D: 



- Molecule 4: alpha-L-fucopyranose-(1-3)-[2-acetamido-2-deoxy-beta-D-glucopyranose-(1-4)]2-acetamido-2-deoxy-beta-D-glucopyranose

Chain E: 



4 Data and refinement statistics

Property	Value	Source
Space group	P 32 2 1	Depositor
Cell constants a, b, c, α , β , γ	73.11Å 73.11Å 164.60Å 90.00° 90.00° 120.00°	Depositor
Resolution (Å)	63.32 – 1.67 19.78 – 1.67	Depositor EDS
% Data completeness (in resolution range)	99.6 (63.32-1.67) 99.7 (19.78-1.67)	Depositor EDS
R_{merge}	0.05	Depositor
R_{sym}	(Not available)	Depositor
$\langle I/\sigma(I) \rangle$ ¹	1.44 (at 1.67Å)	Xtrriage
Refinement program	REFMAC 5.8.0049	Depositor
R, R_{free}	0.157 , 0.180 0.159 , 0.182	Depositor DCC
R_{free} test set	3049 reflections (5.06%)	wwPDB-VP
Wilson B-factor (Å ²)	26.5	Xtrriage
Anisotropy	0.508	Xtrriage
Bulk solvent k_{sol} (e/Å ³), B_{sol} (Å ²)	0.36 , 58.3	EDS
L-test for twinning ²	$\langle L \rangle = 0.47$, $\langle L^2 \rangle = 0.30$	Xtrriage
Estimated twinning fraction	0.036 for -h,-k,l	Xtrriage
F_o, F_c correlation	0.97	EDS
Total number of atoms	2989	wwPDB-VP
Average B, all atoms (Å ²)	41.0	wwPDB-VP

Xtrriage's analysis on translational NCS is as follows: *The largest off-origin peak in the Patterson function is 3.94% of the height of the origin peak. No significant pseudotranslation is detected.*

¹Intensities estimated from amplitudes.

²Theoretical values of $\langle |L| \rangle$, $\langle L^2 \rangle$ for acentric reflections are 0.5, 0.333 respectively for untwinned datasets, and 0.375, 0.2 for perfectly twinned datasets.

5 Model quality [i](#)

5.1 Standard geometry [i](#)

Bond lengths and bond angles in the following residue types are not validated in this section: HEM, NAG, FUC, CO3, MAN, SNN, CA, SO4, XYX, CL, NA, BMA

The Z score for a bond length (or angle) is the number of standard deviations the observed value is removed from the expected value. A bond length (or angle) with $|Z| > 5$ is considered an outlier worth inspection. RMSZ is the root-mean-square of all Z scores of the bond lengths (or angles).

Mol	Chain	Bond lengths		Bond angles	
		RMSZ	$\# Z > 5$	RMSZ	$\# Z > 5$
1	A	1.07	2/2418 (0.1%)	1.00	4/3290 (0.1%)

Chiral center outliers are detected by calculating the chiral volume of a chiral center and verifying if the center is modelled as a planar moiety or with the opposite hand. A planarity outlier is detected by checking planarity of atoms in a peptide group, atoms in a mainchain group or atoms of a sidechain that are expected to be planar.

Mol	Chain	#Chirality outliers	#Planarity outliers
1	A	0	1

All (2) bond length outliers are listed below:

Mol	Chain	Res	Type	Atoms	Z	Observed(Å)	Ideal(Å)
1	A	73	SER	CB-OG	-6.54	1.33	1.42
1	A	140	SER	CB-OG	-5.19	1.35	1.42

All (4) bond angle outliers are listed below:

Mol	Chain	Res	Type	Atoms	Z	Observed($^{\circ}$)	Ideal($^{\circ}$)
1	A	173	ARG	NE-CZ-NH1	6.79	123.69	120.30
1	A	125	ASP	CB-CG-OD2	6.74	124.36	118.30
1	A	173	ARG	NE-CZ-NH2	-5.81	117.40	120.30
1	A	296	ARG	NE-CZ-NH2	5.58	123.09	120.30

There are no chirality outliers.

All (1) planarity outliers are listed below:

Mol	Chain	Res	Type	Group
1	A	289	THR	Mainchain

5.2 Too-close contacts [i](#)

In the following table, the Non-H and H(model) columns list the number of non-hydrogen atoms and hydrogen atoms in the chain respectively. The H(added) column lists the number of hydrogen atoms added and optimized by MolProbity. The Clashes column lists the number of clashes within the asymmetric unit, whereas Symm-Clashes lists symmetry-related clashes.

Mol	Chain	Non-H	H(model)	H(added)	Clashes	Symm-Clashes
1	A	2360	0	2287	18	0
2	B	24	0	22	1	0
3	C	80	0	68	1	0
4	D	38	0	34	0	0
4	E	39	0	29	0	0
5	A	43	0	30	1	0
6	A	42	0	39	2	0
7	A	2	0	0	0	0
8	A	1	0	0	0	0
9	A	3	0	0	0	0
10	A	15	0	0	0	0
11	A	16	0	0	1	0
12	A	326	0	0	5	0
All	All	2989	0	2509	19	0

The all-atom clashscore is defined as the number of clashes found per 1000 atoms (including hydrogen atoms). The all-atom clashscore for this structure is 4.

The worst 5 of 19 close contacts within the same asymmetric unit are listed below, sorted by their clash magnitude.

Atom-1	Atom-2	Interatomic distance (Å)	Clash overlap (Å)
1:A:87[B]:VAL:HG21	1:A:100:ILE:HD11	1.69	0.74
1:A:253:LYS:HG2	12:A:2254:HOH:O	1.90	0.71
1:A:260:ILE:HD11	6:A:1325:NAG:H82	1.72	0.71
1:A:305[B]:GLY:O	1:A:306[B]:ALA:HB2	1.93	0.69
12:A:2312:HOH:O	3:C:4:XY5:H51	1.96	0.65

There are no symmetry-related clashes.

5.3 Torsion angles [i](#)

5.3.1 Protein backbone [i](#)

In the following table, the Percentiles column shows the percent Ramachandran outliers of the chain as a percentile score with respect to all X-ray entries followed by that with respect to entries

of similar resolution.

The Analysed column shows the number of residues for which the backbone conformation was analysed, and the total number of residues.

Mol	Chain	Analysed	Favoured	Allowed	Outliers	Percentiles
1	A	312/306 (102%)	306 (98%)	6 (2%)	0	100 100

There are no Ramachandran outliers to report.

5.3.2 Protein sidechains [i](#)

In the following table, the Percentiles column shows the percent sidechain outliers of the chain as a percentile score with respect to all X-ray entries followed by that with respect to entries of similar resolution.

The Analysed column shows the number of residues for which the sidechain conformation was analysed, and the total number of residues.

Mol	Chain	Analysed	Rotameric	Outliers	Percentiles
1	A	268/260 (103%)	265 (99%)	3 (1%)	73 61

All (3) residues with a non-rotameric sidechain are listed below:

Mol	Chain	Res	Type
1	A	1	GLN
1	A	140	SER
1	A	171	PHE

Sometimes sidechains can be flipped to improve hydrogen bonding and reduce clashes. 5 of 9 such sidechains are listed below:

Mol	Chain	Res	Type
1	A	273	ASN
1	A	284	ASN
1	A	136	GLN
1	A	155	GLN
1	A	210	GLN

5.3.3 RNA [i](#)

There are no RNA molecules in this entry.

5.4 Non-standard residues in protein, DNA, RNA chains [i](#)

1 non-standard protein/DNA/RNA residue is modelled in this entry.

In the following table, the Counts columns list the number of bonds (or angles) for which Mogul statistics could be retrieved, the number of bonds (or angles) that are observed in the model and the number of bonds (or angles) that are defined in the Chemical Component Dictionary. The Link column lists molecule types, if any, to which the group is linked. The Z score for a bond length (or angle) is the number of standard deviations the observed value is removed from the expected value. A bond length (or angle) with $|Z| > 2$ is considered an outlier worth inspection. RMSZ is the root-mean-square of all Z scores of the bond lengths (or angles).

Mol	Type	Chain	Res	Link	Bond lengths			Bond angles		
					Counts	RMSZ	# Z > 2	Counts	RMSZ	# Z > 2
1	SNN	A	290	1	7,8,8	7.29	2 (28%)	7,11,11	6.01	5 (71%)

In the following table, the Chirals column lists the number of chiral outliers, the number of chiral centers analysed, the number of these observed in the model and the number defined in the Chemical Component Dictionary. Similar counts are reported in the Torsion and Rings columns. '-' means no outliers of that kind were identified.

Mol	Type	Chain	Res	Link	Chirals	Torsions	Rings
1	SNN	A	290	1	-	-	0/1/1/1

All (2) bond length outliers are listed below:

Mol	Chain	Res	Type	Atoms	Z	Observed(Å)	Ideal(Å)
1	A	290	SNN	C5-N1	15.28	1.60	1.37
1	A	290	SNN	C-N1	11.56	1.52	1.37

All (5) bond angle outliers are listed below:

Mol	Chain	Res	Type	Atoms	Z	Observed(°)	Ideal(°)
1	A	290	SNN	CA-C-N1	14.00	118.12	107.30
1	A	290	SNN	O-C-N1	-6.05	117.62	124.94
1	A	290	SNN	O-C-CA	-2.68	124.24	126.18
1	A	290	SNN	CA-C4-C5	2.30	106.16	103.50
1	A	290	SNN	O5-C5-N1	-2.14	122.13	125.00

There are no chirality outliers.

There are no torsion outliers.

There are no ring outliers.

No monomer is involved in short contacts.

5.5 Carbohydrates i

16 monosaccharides are modelled in this entry.

In the following table, the Counts columns list the number of bonds (or angles) for which Mogul statistics could be retrieved, the number of bonds (or angles) that are observed in the model and the number of bonds (or angles) that are defined in the Chemical Component Dictionary. The Link column lists molecule types, if any, to which the group is linked. The Z score for a bond length (or angle) is the number of standard deviations the observed value is removed from the expected value. A bond length (or angle) with $|Z| > 2$ is considered an outlier worth inspection. RMSZ is the root-mean-square of all Z scores of the bond lengths (or angles).

Mol	Type	Chain	Res	Link	Bond lengths			Bond angles		
					Counts	RMSZ	# Z > 2	Counts	RMSZ	# Z > 2
2	NAG	B	1	2,1	14,14,15	0.71	0	17,19,21	2.10	3 (17%)
2	FUC	B	2	2	10,10,11	0.63	0	14,14,16	0.62	0
3	NAG	C	1	3,1	14,14,15	0.84	0	17,19,21	1.49	4 (23%)
3	NAG	C	2	3	14,14,15	0.90	1 (7%)	17,19,21	1.47	3 (17%)
3	BMA	C	3	3	11,11,12	1.11	1 (9%)	15,15,17	1.20	2 (13%)
3	XYS	C	4	3	9,9,10	1.65	2 (22%)	10,12,14	2.32	4 (40%)
3	MAN	C	5	3	11,11,12	0.80	1 (9%)	15,15,17	1.87	4 (26%)
3	MAN	C	6	3	11,11,12	0.64	0	15,15,17	1.72	3 (20%)
3	FUC	C	7	3	10,10,11	1.23	1 (10%)	14,14,16	1.18	1 (7%)
4	NAG	D	1	4,1	14,14,15	0.80	0	17,19,21	1.25	3 (17%)
4	FUC	D	2	4	10,10,11	0.75	0	14,14,16	1.12	1 (7%)
4	NAG	D	3	4	14,14,15	0.56	0	17,19,21	1.12	1 (5%)
4	NAG	E	1[A]	-	14,14,15	0.80	0	17,19,21	1.78	4 (23%)
4	NAG	E	1[B]	-	14,14,15	0.80	0	17,19,21	1.79	4 (23%)
4	FUC	E	2	4	10,10,11	0.60	0	14,14,16	0.94	1 (7%)
4	NAG	E	3	4	14,14,15	0.50	0	17,19,21	1.86	4 (23%)

In the following table, the Chirals column lists the number of chiral outliers, the number of chiral centers analysed, the number of these observed in the model and the number defined in the Chemical Component Dictionary. Similar counts are reported in the Torsion and Rings columns. '-' means no outliers of that kind were identified.

Mol	Type	Chain	Res	Link	Chirals	Torsions	Rings
2	NAG	B	1	2,1	-	2/6/23/26	0/1/1/1
2	FUC	B	2	2	-	-	0/1/1/1
3	NAG	C	1	3,1	-	0/6/23/26	0/1/1/1
3	NAG	C	2	3	-	0/6/23/26	0/1/1/1
3	BMA	C	3	3	-	0/2/19/22	0/1/1/1

Continued on next page...

Continued from previous page...

Mol	Type	Chain	Res	Link	Chirals	Torsions	Rings
3	XYS	C	4	3	-	-	0/1/1/1
3	MAN	C	5	3	-	2/2/19/22	0/1/1/1
3	MAN	C	6	3	-	0/2/19/22	0/1/1/1
3	FUC	C	7	3	-	-	0/1/1/1
4	NAG	D	1	4,1	-	2/6/23/26	0/1/1/1
4	FUC	D	2	4	-	-	0/1/1/1
4	NAG	D	3	4	-	0/6/23/26	0/1/1/1
4	NAG	E	1[A]	-	-	0/6/23/26	0/1/1/1
4	NAG	E	1[B]	-	-	0/6/23/26	0/1/1/1
4	FUC	E	2	4	-	-	0/1/1/1
4	NAG	E	3	4	-	2/6/23/26	0/1/1/1

The worst 5 of 6 bond length outliers are listed below:

Mol	Chain	Res	Type	Atoms	Z	Observed(Å)	Ideal(Å)
3	C	4	XYS	O5-C1	3.18	1.49	1.42
3	C	3	BMA	O2-C2	3.06	1.49	1.43
3	C	4	XYS	C2-C3	3.00	1.56	1.52
3	C	7	FUC	C2-C3	2.71	1.56	1.52
3	C	5	MAN	C2-C3	2.12	1.55	1.52

The worst 5 of 42 bond angle outliers are listed below:

Mol	Chain	Res	Type	Atoms	Z	Observed(°)	Ideal(°)
2	B	1	NAG	C2-N2-C7	-5.69	114.79	122.90
3	C	4	XYS	C1-C2-C3	5.25	116.12	109.67
4	E	1[A]	NAG	O5-C1-C2	-4.75	103.79	111.29
4	E	1[B]	NAG	O5-C1-C2	-4.75	103.79	111.29
2	B	1	NAG	C1-O5-C5	4.68	118.54	112.19

There are no chirality outliers.

5 of 8 torsion outliers are listed below:

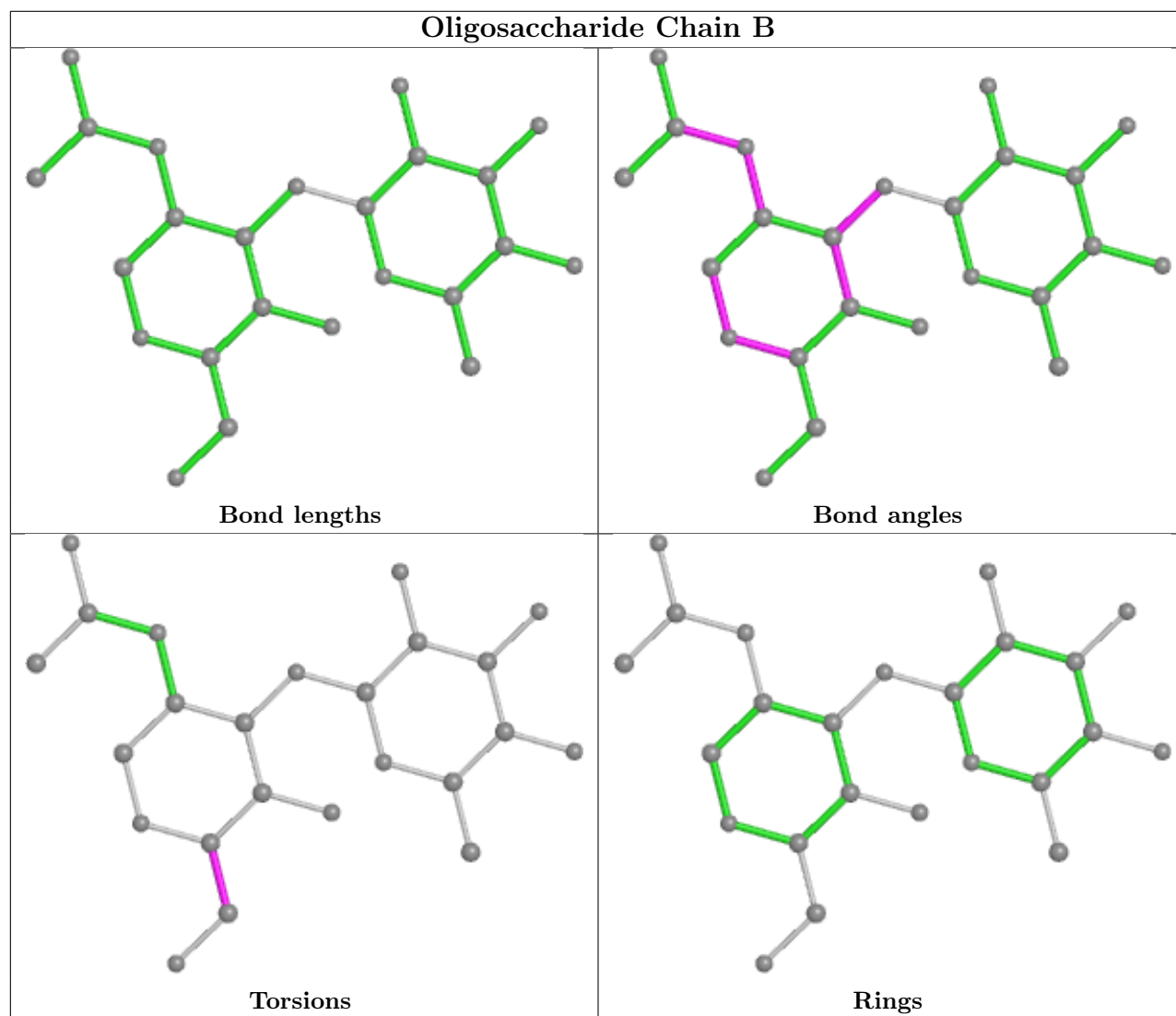
Mol	Chain	Res	Type	Atoms
4	D	1	NAG	C4-C5-C6-O6
2	B	1	NAG	C4-C5-C6-O6
4	E	3	NAG	C4-C5-C6-O6
3	C	5	MAN	C4-C5-C6-O6
2	B	1	NAG	O5-C5-C6-O6

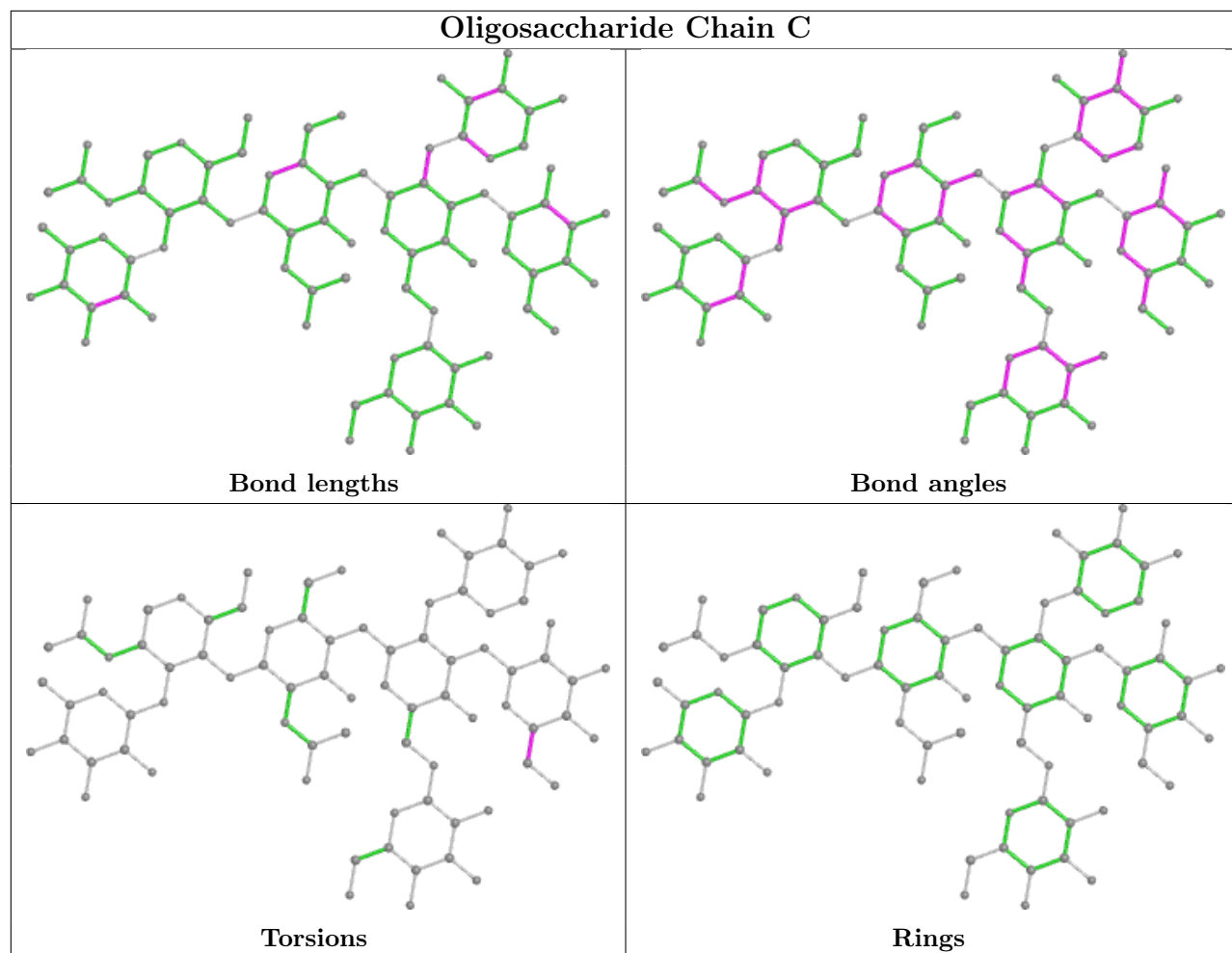
There are no ring outliers.

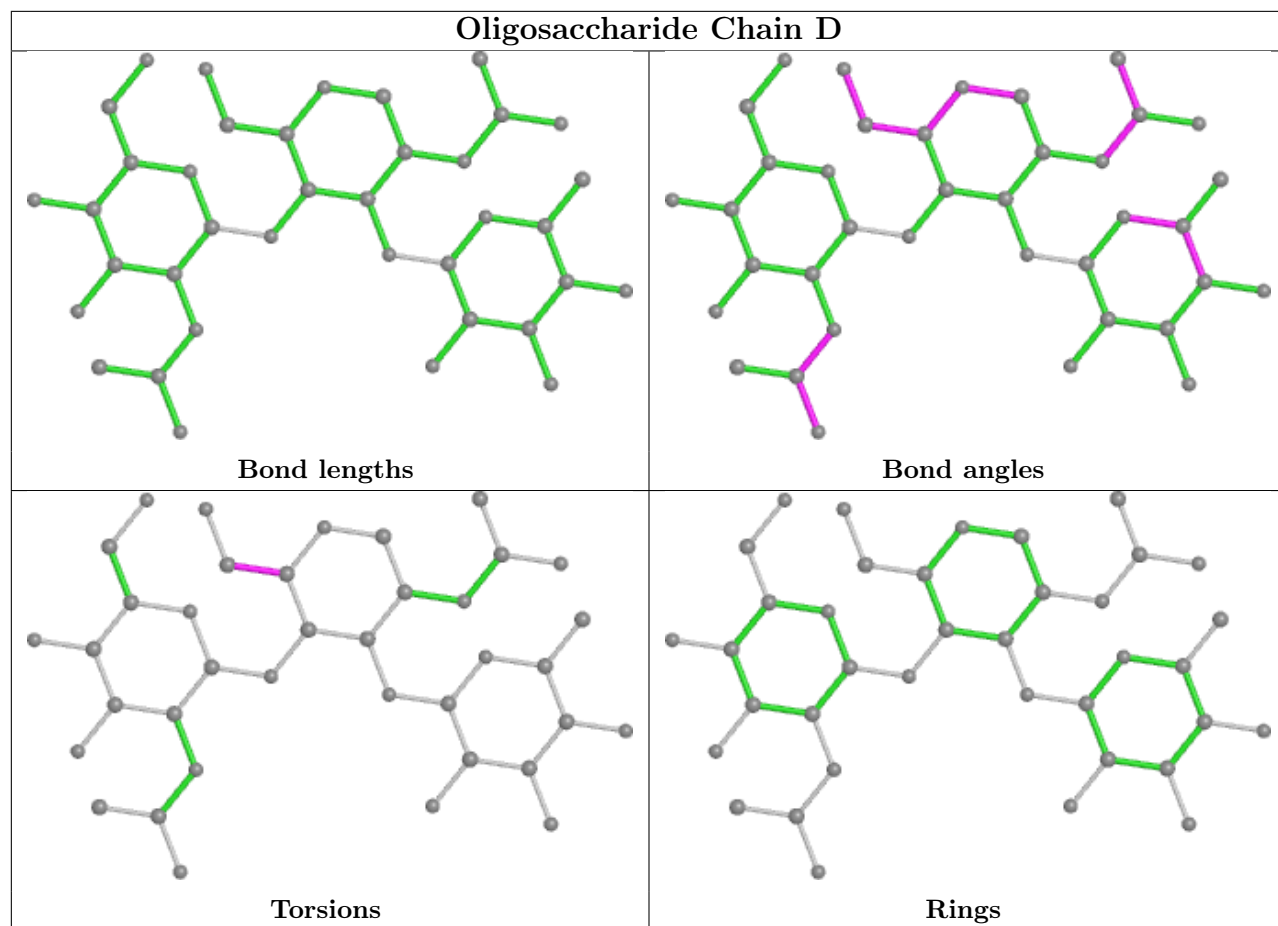
2 monomers are involved in 2 short contacts:

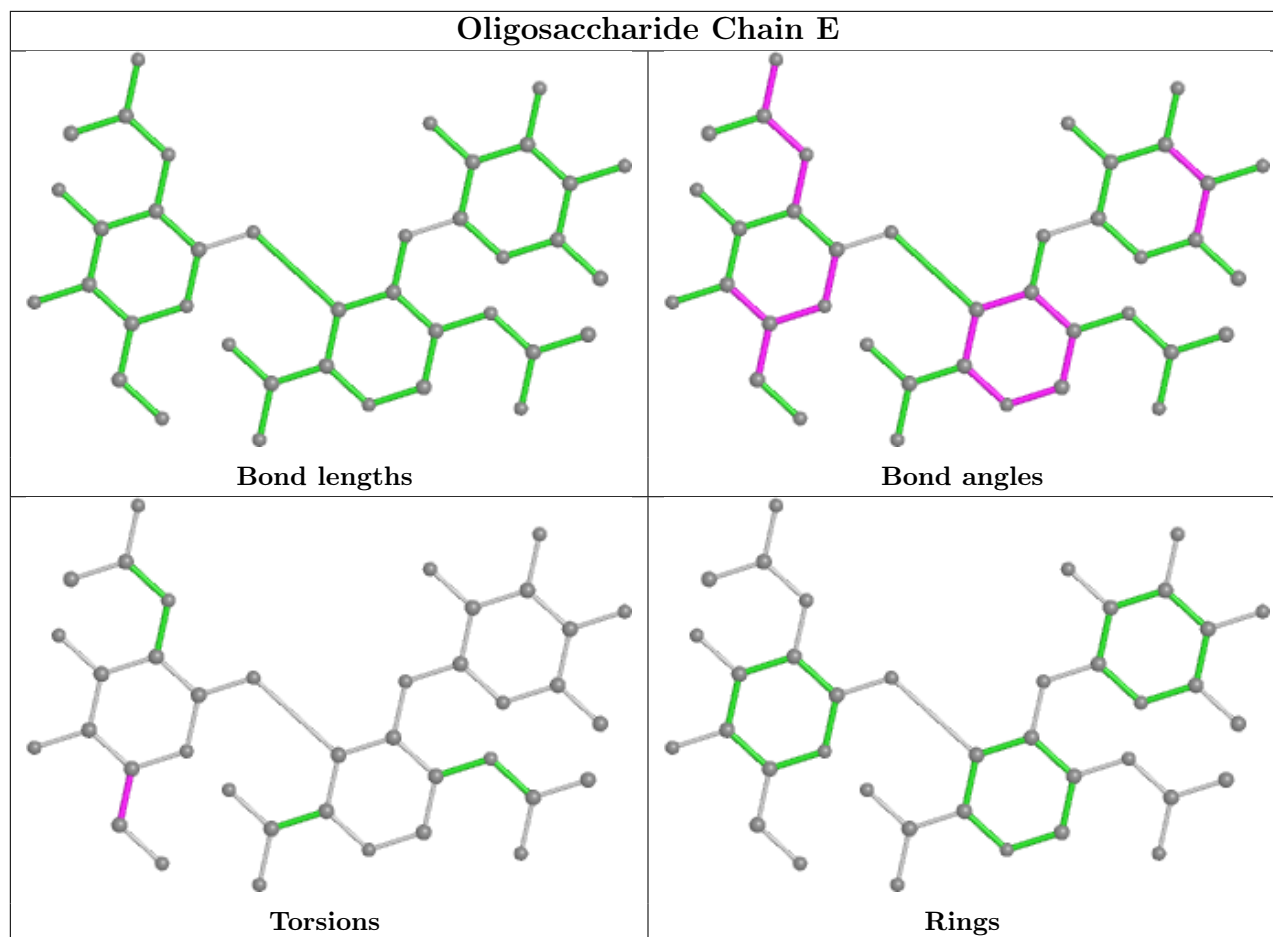
Mol	Chain	Res	Type	Clashes	Symm-Clashes
3	C	4	XYS	1	0
2	B	1	NAG	1	0

The following is a two-dimensional graphical depiction of Mogul quality analysis of bond lengths, bond angles, torsion angles, and ring geometry for oligosaccharide.









5.6 Ligand geometry [i](#)

Of 17 ligands modelled in this entry, 6 are monoatomic - leaving 11 for Mogul analysis.

In the following table, the Counts columns list the number of bonds (or angles) for which Mogul statistics could be retrieved, the number of bonds (or angles) that are observed in the model and the number of bonds (or angles) that are defined in the Chemical Component Dictionary. The Link column lists molecule types, if any, to which the group is linked. The Z score for a bond length (or angle) is the number of standard deviations the observed value is removed from the expected value. A bond length (or angle) with $|Z| > 2$ is considered an outlier worth inspection. RMSZ is the root-mean-square of all Z scores of the bond lengths (or angles).

Mol	Type	Chain	Res	Link	Bond lengths			Bond angles		
					Counts	RMSZ	# Z > 2	Counts	RMSZ	# Z > 2
6	NAG	A	1320	1	14,14,15	0.64	0	17,19,21	1.39	4 (23%)
6	NAG	A	1324	1	14,14,15	0.74	1 (7%)	17,19,21	1.23	2 (11%)
10	SO4	A	1334	-	4,4,4	0.43	0	6,6,6	0.28	0
11	CO3	A	1337	-	2,3,3	1.31	0	2,3,3	0.40	0
11	CO3	A	1335	-	2,3,3	1.19	0	2,3,3	0.55	0
11	CO3	A	1336	-	2,3,3	1.29	0	2,3,3	1.06	0

Mol	Type	Chain	Res	Link	Bond lengths			Bond angles		
					Counts	RMSZ	# Z > 2	Counts	RMSZ	# Z > 2
5	HEM	A	1307	1	41,50,50	1.56	9 (21%)	45,82,82	1.75	10 (22%)
10	SO4	A	1333	-	4,4,4	0.32	0	6,6,6	1.00	1 (16%)
11	CO3	A	1338	-	2,3,3	1.69	1 (50%)	2,3,3	4.74	2 (100%)
10	SO4	A	1332	-	4,4,4	0.48	0	6,6,6	0.61	0
6	NAG	A	1325	1	14,14,15	0.91	0	17,19,21	2.85	5 (29%)

In the following table, the Chirals column lists the number of chiral outliers, the number of chiral centers analysed, the number of these observed in the model and the number defined in the Chemical Component Dictionary. Similar counts are reported in the Torsion and Rings columns. '-' means no outliers of that kind were identified.

Mol	Type	Chain	Res	Link	Chirals	Torsions	Rings
5	HEM	A	1307	1	-	2/12/54/54	-
6	NAG	A	1320	1	1/1/5/7	2/6/23/26	0/1/1/1
6	NAG	A	1324	1	1/1/5/7	3/6/23/26	0/1/1/1
6	NAG	A	1325	1	-	0/6/23/26	0/1/1/1

The worst 5 of 11 bond length outliers are listed below:

Mol	Chain	Res	Type	Atoms	Z	Observed(Å)	Ideal(Å)
5	A	1307	HEM	O1A-CGA	3.20	1.32	1.22
5	A	1307	HEM	CHA-C4D	2.98	1.42	1.35
5	A	1307	HEM	O1D-CGD	2.93	1.31	1.22
5	A	1307	HEM	CMB-C2B	2.79	1.56	1.50
5	A	1307	HEM	C4A-NA	2.79	1.41	1.36

The worst 5 of 24 bond angle outliers are listed below:

Mol	Chain	Res	Type	Atoms	Z	Observed(°)	Ideal(°)
6	A	1325	NAG	C1-O5-C5	7.61	122.50	112.19
6	A	1325	NAG	O5-C1-C2	6.63	121.75	111.29
11	A	1338	CO3	O3-C-O1	-6.00	103.98	119.55
5	A	1307	HEM	CHA-C4D-ND	4.76	130.26	124.38
5	A	1307	HEM	CHC-C4B-NB	3.92	128.69	124.43

All (2) chirality outliers are listed below:

Mol	Chain	Res	Type	Atom
6	A	1320	NAG	C1
6	A	1324	NAG	C1

5 of 7 torsion outliers are listed below:

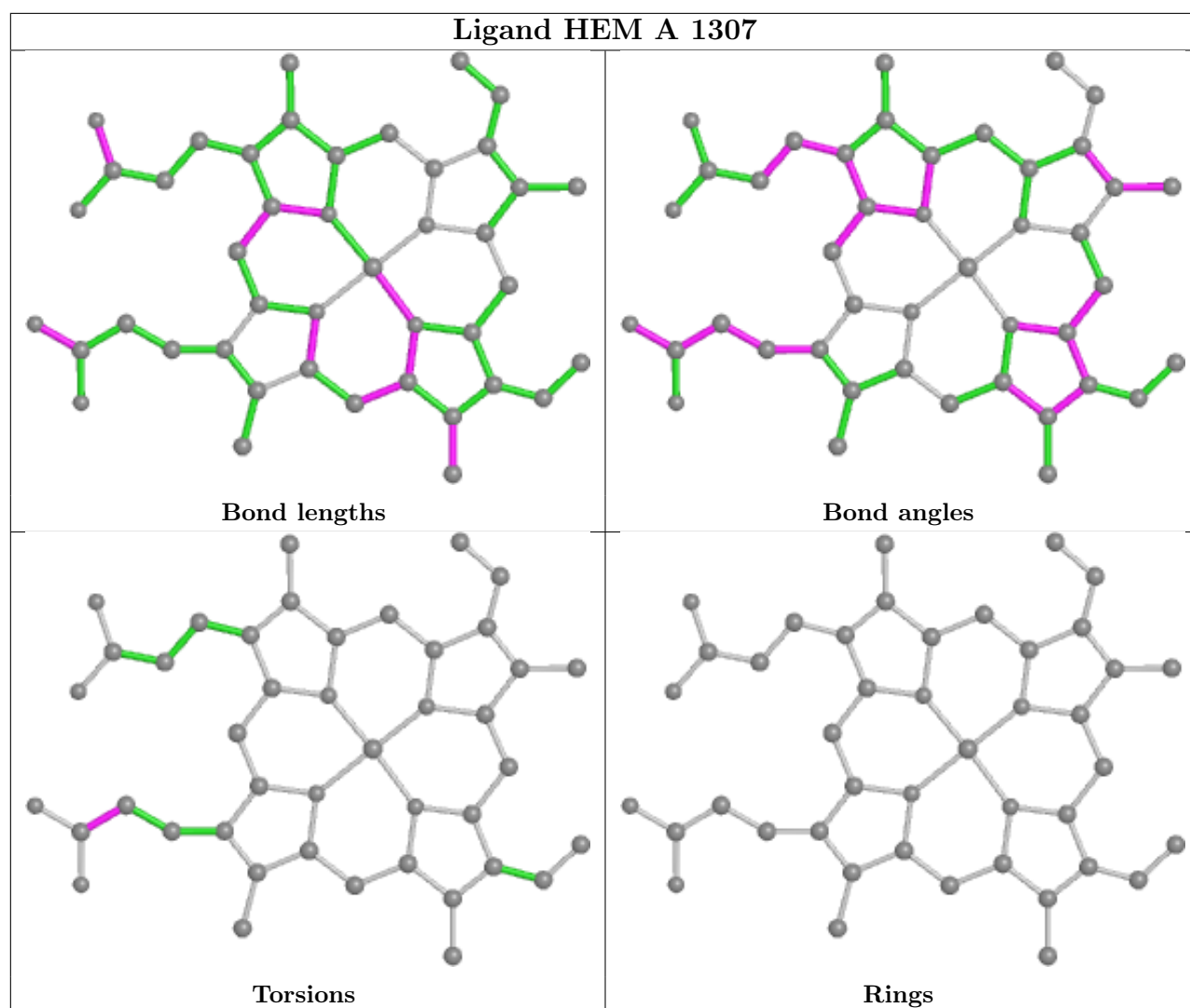
Mol	Chain	Res	Type	Atoms
6	A	1324	NAG	C4-C5-C6-O6
6	A	1324	NAG	O5-C5-C6-O6
6	A	1320	NAG	C4-C5-C6-O6
6	A	1320	NAG	O5-C5-C6-O6
5	A	1307	HEM	CAA-CBA-CGA-O1A

There are no ring outliers.

3 monomers are involved in 4 short contacts:

Mol	Chain	Res	Type	Clashes	Symm-Clashes
11	A	1335	CO3	1	0
5	A	1307	HEM	1	0
6	A	1325	NAG	2	0

The following is a two-dimensional graphical depiction of Mogul quality analysis of bond lengths, bond angles, torsion angles, and ring geometry for all instances of the Ligand of Interest. In addition, ligands with molecular weight > 250 and outliers as shown on the validation Tables will also be included. For torsion angles, if less than 5% of the Mogul distribution of torsion angles is within 10 degrees of the torsion angle in question, then that torsion angle is considered an outlier. Any bond that is central to one or more torsion angles identified as an outlier by Mogul will be highlighted in the graph. For rings, the root-mean-square deviation (RMSD) between the ring in question and similar rings identified by Mogul is calculated over all ring torsion angles. If the average RMSD is greater than 60 degrees and the minimal RMSD between the ring in question and any Mogul-identified rings is also greater than 60 degrees, then that ring is considered an outlier. The outliers are highlighted in purple. The color gray indicates Mogul did not find sufficient equivalents in the CSD to analyse the geometry.



5.7 Other polymers [i](#)

There are no such residues in this entry.

5.8 Polymer linkage issues [i](#)

There are no chain breaks in this entry.

6 Fit of model and data [i](#)

6.1 Protein, DNA and RNA chains [i](#)

In the following table, the column labelled ‘#RSRZ> 2’ contains the number (and percentage) of RSRZ outliers, followed by percent RSRZ outliers for the chain as percentile scores relative to all X-ray entries and entries of similar resolution. The OWAB column contains the minimum, median, 95th percentile and maximum values of the occupancy-weighted average B-factor per residue. The column labelled ‘Q< 0.9’ lists the number of (and percentage) of residues with an average occupancy less than 0.9.

Mol	Chain	Analysed	<RSRZ>	#RSRZ>2	OWAB(Å ²)	Q<0.9
1	A	305/306 (99%)	-0.34	6 (1%) 65 69	26, 35, 53, 80	0

The worst 5 of 6 RSRZ outliers are listed below:

Mol	Chain	Res	Type	RSRZ
1	A	305[A]	GLY	6.2
1	A	306[A]	ALA	5.5
1	A	304	GLY	4.3
1	A	211	GLY	4.2
1	A	212	GLY	3.9

6.2 Non-standard residues in protein, DNA, RNA chains [i](#)

In the following table, the Atoms column lists the number of modelled atoms in the group and the number defined in the chemical component dictionary. The B-factors column lists the minimum, median, 95th percentile and maximum values of B factors of atoms in the group. The column labelled ‘Q< 0.9’ lists the number of atoms with occupancy less than 0.9.

Mol	Type	Chain	Res	Atoms	RSCC	RSR	B-factors(Å ²)	Q<0.9
1	SNN	A	290	8/8	0.98	0.05	37,38,44,46	0

6.3 Carbohydrates [i](#)

In the following table, the Atoms column lists the number of modelled atoms in the group and the number defined in the chemical component dictionary. The B-factors column lists the minimum, median, 95th percentile and maximum values of B factors of atoms in the group. The column labelled ‘Q< 0.9’ lists the number of atoms with occupancy less than 0.9.

Mol	Type	Chain	Res	Atoms	RSCC	RSR	B-factors(Å ²)	Q<0.9
2	FUC	B	2	10/11	0.67	0.49	92,97,100,101	10

Continued on next page...

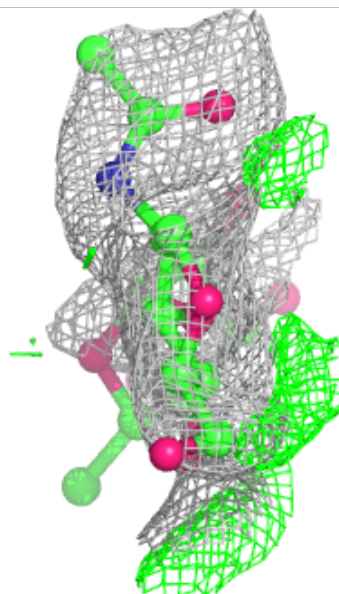
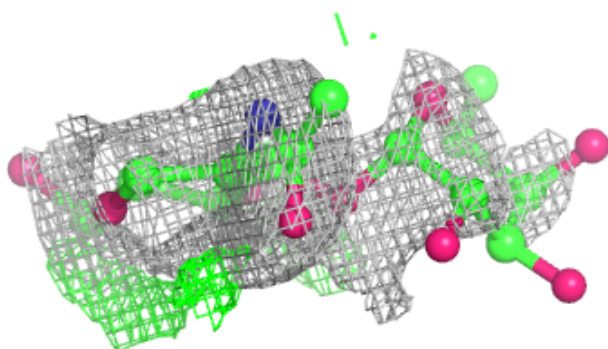
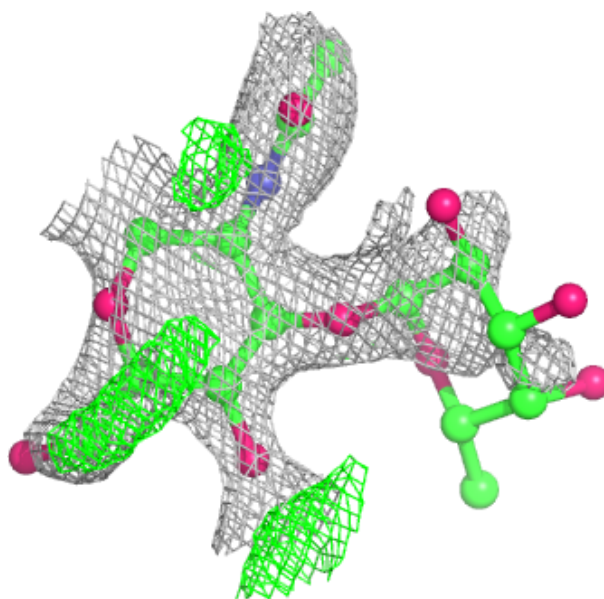
Continued from previous page...

Mol	Type	Chain	Res	Atoms	RSCC	RSR	B-factors(\AA^2)	Q<0.9
2	NAG	B	1	14/15	0.76	0.26	55,74,83,84	14
4	NAG	D	3	14/15	0.78	0.39	90,100,107,110	0
4	FUC	E	2	10/11	0.81	0.30	61,73,79,80	0
3	MAN	C	5	11/12	0.82	0.28	60,70,80,82	0
4	NAG	E	3	14/15	0.83	0.36	80,94,110,112	0
4	NAG	D	1	14/15	0.89	0.14	60,67,79,83	0
3	XYS	C	4	9/10	0.90	0.26	55,66,73,76	0
3	MAN	C	6	11/12	0.90	0.21	52,57,61,62	0
4	NAG	E	1[B]	14/15	0.92	0.15	38,43,56,75	1
4	FUC	D	2	10/11	0.92	0.41	90,99,104,104	0
4	NAG	E	1[A]	14/15	0.92	0.15	38,43,56,75	1
3	BMA	C	3	11/12	0.95	0.12	42,45,50,52	0
3	NAG	C	2	14/15	0.96	0.10	40,42,45,46	0
3	NAG	C	1	14/15	0.97	0.05	35,38,45,48	0
3	FUC	C	7	10/11	0.98	0.04	38,39,40,41	0

The following is a graphical depiction of the model fit to experimental electron density for oligosaccharide. Each fit is shown from different orientation to approximate a three-dimensional view.

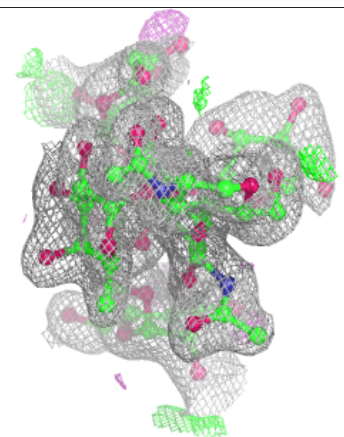
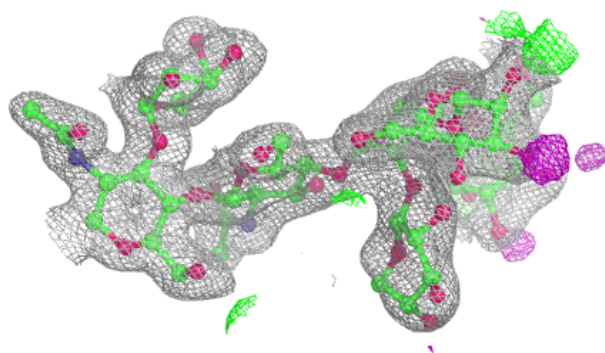
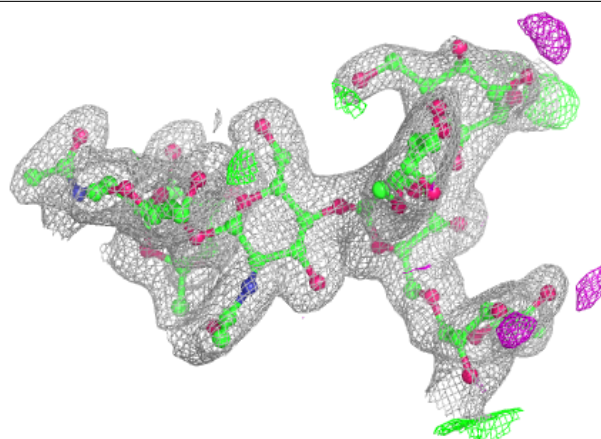
Electron density around Chain B:

$2mF_o-DF_c$ (at 0.7 rmsd) in gray
 mF_o-DF_c (at 3 rmsd) in purple (negative)
and green (positive)



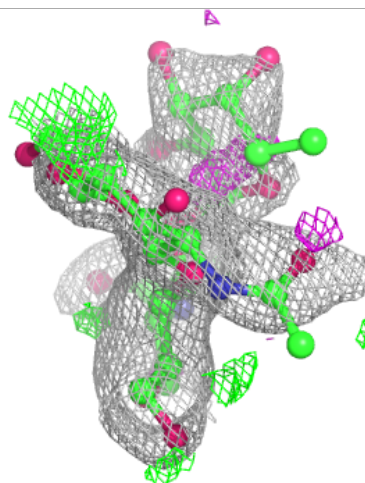
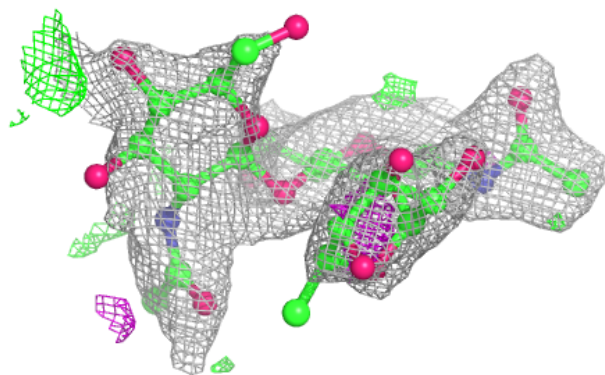
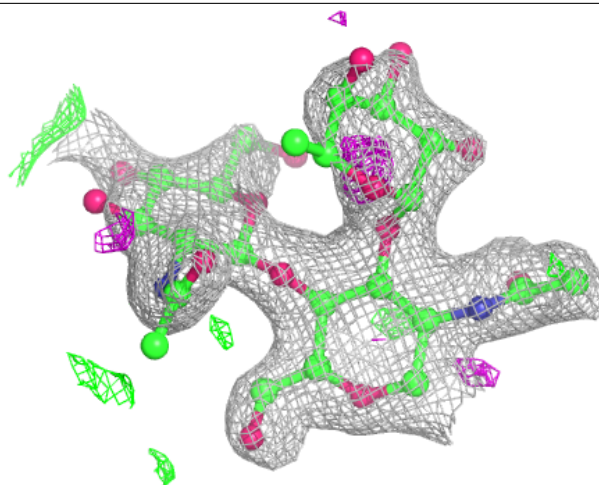
Electron density around Chain C:

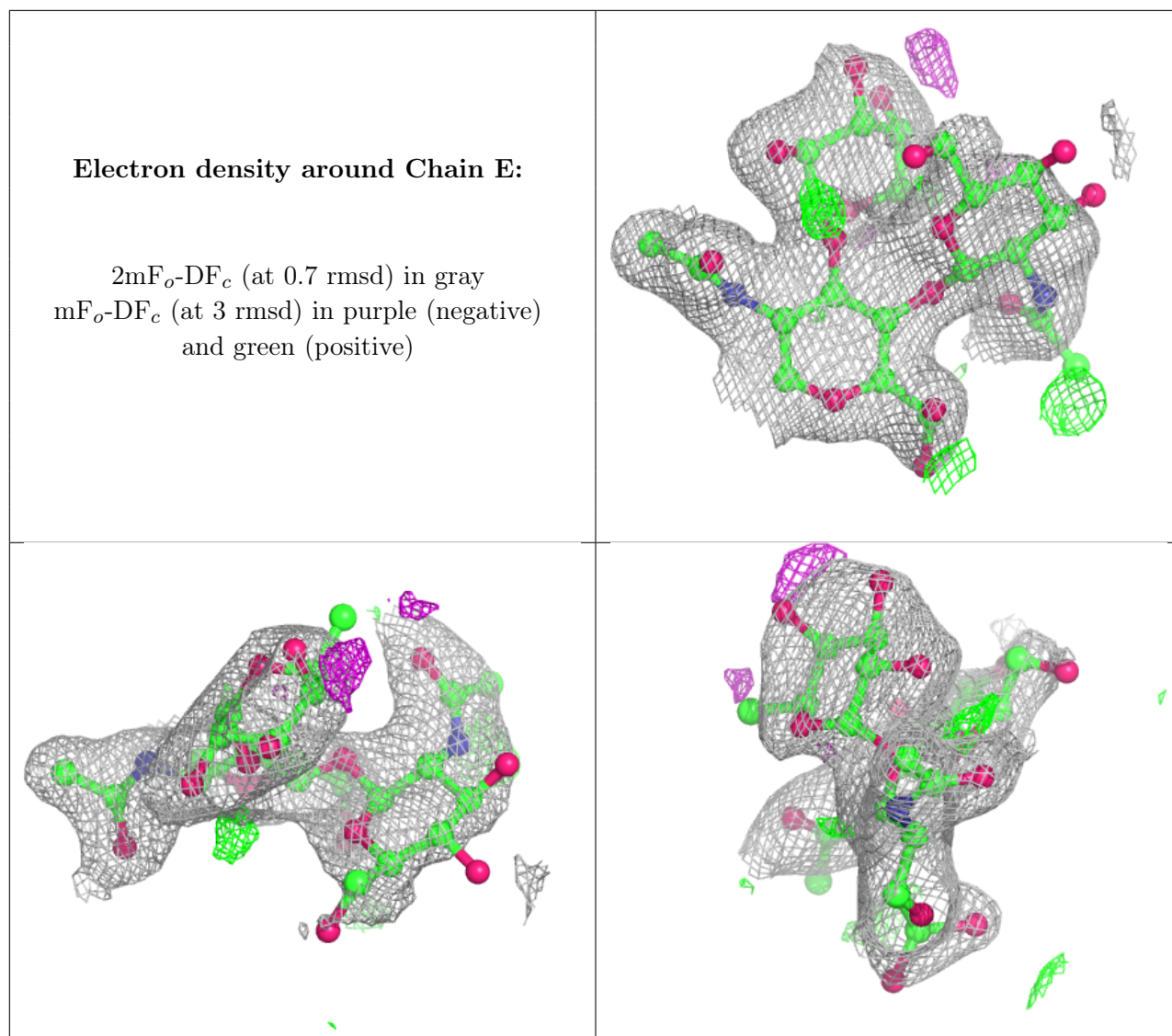
$2mF_o-DF_c$ (at 0.7 rmsd) in gray
 mF_o-DF_c (at 3 rmsd) in purple (negative)
and green (positive)



Electron density around Chain D:

$2mF_o-DF_c$ (at 0.7 rmsd) in gray
 mF_o-DF_c (at 3 rmsd) in purple (negative)
and green (positive)





6.4 Ligands [i](#)

In the following table, the Atoms column lists the number of modelled atoms in the group and the number defined in the chemical component dictionary. The B-factors column lists the minimum, median, 95th percentile and maximum values of B factors of atoms in the group. The column labelled 'Q<0.9' lists the number of atoms with occupancy less than 0.9.

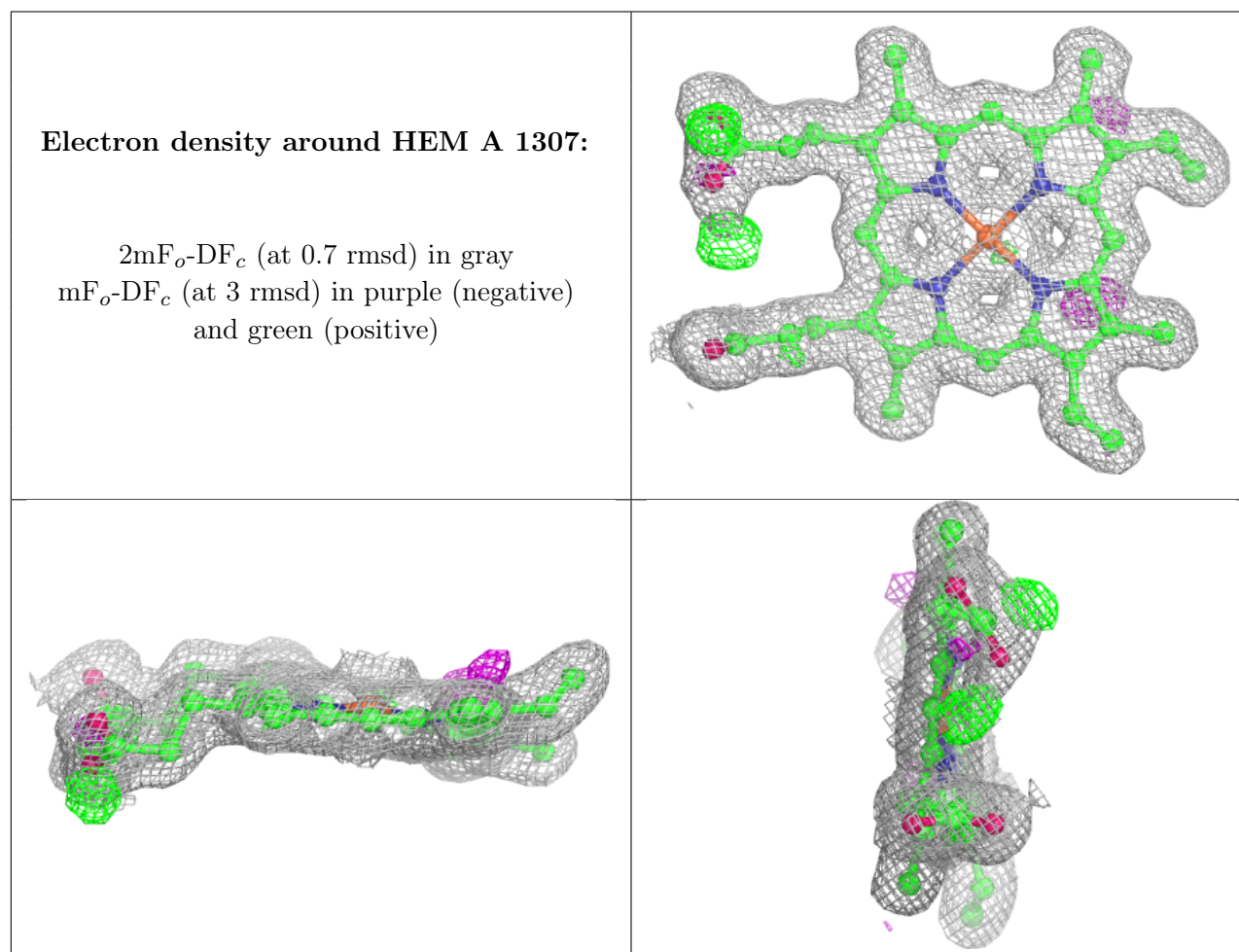
Mol	Type	Chain	Res	Atoms	RSCC	RSR	B-factors(Å ²)	Q<0.9
6	NAG	A	1325	14/15	0.41	0.41	63,79,86,88	14
6	NAG	A	1320	14/15	0.54	0.38	90,107,116,117	0
6	NAG	A	1324	14/15	0.71	0.35	103,118,130,131	0
11	CO3	A	1337	4/4	0.91	0.08	73,77,78,81	0
11	CO3	A	1336	4/4	0.93	0.13	73,77,78,79	0
11	CO3	A	1338	4/4	0.94	0.12	34,39,43,48	4
9	CL	A	1329	1/1	0.95	0.09	29,29,29,29	1

Continued on next page...

Continued from previous page...

Mol	Type	Chain	Res	Atoms	RSCC	RSR	B-factors(\AA^2)	Q<0.9
10	SO4	A	1334	5/5	0.95	0.17	78,78,90,91	0
11	CO3	A	1335	4/4	0.95	0.10	55,70,75,76	0
10	SO4	A	1333	5/5	0.99	0.05	38,39,42,44	0
7	CA	A	1326	1/1	0.99	0.03	32,32,32,32	0
5	HEM	A	1307	43/43	0.99	0.06	26,28,32,44	0
9	CL	A	1330	1/1	0.99	0.07	38,38,38,38	1
9	CL	A	1331	1/1	0.99	0.05	36,36,36,36	1
10	SO4	A	1332	5/5	0.99	0.12	44,44,47,50	0
7	CA	A	1327	1/1	1.00	0.03	34,34,34,34	1
8	NA	A	1328	1/1	1.00	0.04	24,24,24,24	1

The following is a graphical depiction of the model fit to experimental electron density of all instances of the Ligand of Interest. In addition, ligands with molecular weight > 250 and outliers as shown on the geometry validation Tables will also be included. Each fit is shown from different orientation to approximate a three-dimensional view.



6.5 Other polymers [i](#)

There are no such residues in this entry.