



# Full wwPDB X-ray Structure Validation Report ⓘ

May 24, 2020 – 04:56 am BST

PDB ID : 4CTQ  
Title : Structure of rat neuronal nitric oxide synthase heme domain in complex with (R)-6-(2-Amino-2-(3-(2-(6-amino-4-methylpyridin-2-yl) ethyl)phenyl)ethyl)-4-methylpyridin-2-amine  
Authors : Li, H.; Poulos, T.L.  
Deposited on : 2014-03-15  
Resolution : 2.00 Å(reported)

This is a Full wwPDB X-ray Structure Validation Report for a publicly released PDB entry.

We welcome your comments at [validation@mail.wwpdb.org](mailto:validation@mail.wwpdb.org)

A user guide is available at

<https://www.wwpdb.org/validation/2017/XrayValidationReportHelp>

with specific help available everywhere you see the ⓘ symbol.

---

The following versions of software and data (see [references ⓘ](#)) were used in the production of this report:

MolProbity : 4.02b-467  
Mogul : 1.8.5 (274361), CSD as541be (2020)  
Xtriage (Phenix) : 1.13  
EDS : 2.11  
buster-report : 1.1.7 (2018)  
Percentile statistics : 20191225.v01 (using entries in the PDB archive December 25th 2019)  
Refmac : 5.8.0158  
CCP4 : 7.0.044 (Gargrove)  
Ideal geometry (proteins) : Engh & Huber (2001)  
Ideal geometry (DNA, RNA) : Parkinson et al. (1996)  
Validation Pipeline (wwPDB-VP) : 2.11

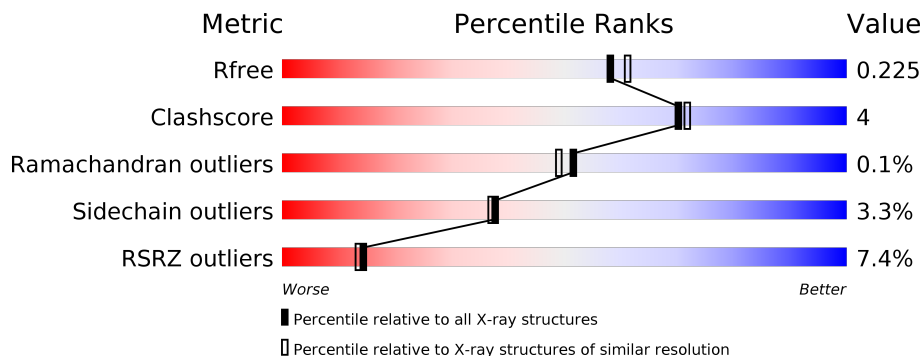
# 1 Overall quality at a glance

The following experimental techniques were used to determine the structure:

*X-RAY DIFFRACTION*

The reported resolution of this entry is 2.00 Å.

Percentile scores (ranging between 0-100) for global validation metrics of the entry are shown in the following graphic. The table shows the number of entries on which the scores are based.



Metric	Whole archive (#Entries)	Similar resolution (#Entries, resolution range(Å))
$R_{free}$	130704	8085 (2.00-2.00)
Clashscore	141614	9178 (2.00-2.00)
Ramachandran outliers	138981	9054 (2.00-2.00)
Sidechain outliers	138945	9053 (2.00-2.00)
RSRZ outliers	127900	7900 (2.00-2.00)

The table below summarises the geometric issues observed across the polymeric chains and their fit to the electron density. The red, orange, yellow and green segments on the lower bar indicate the fraction of residues that contain outliers for  $\geq 3$ , 2, 1 and 0 types of geometric quality criteria respectively. A grey segment represents the fraction of residues that are not modelled. The numeric value for each fraction is indicated below the corresponding segment, with a dot representing fractions  $\leq 5\%$ . The upper red bar (where present) indicates the fraction of residues that have poor fit to the electron density. The numeric value is given above the bar.

Mol	Chain	Length	Quality of chain
1	A	422	
1	B	422	

## 2 Entry composition [i](#)

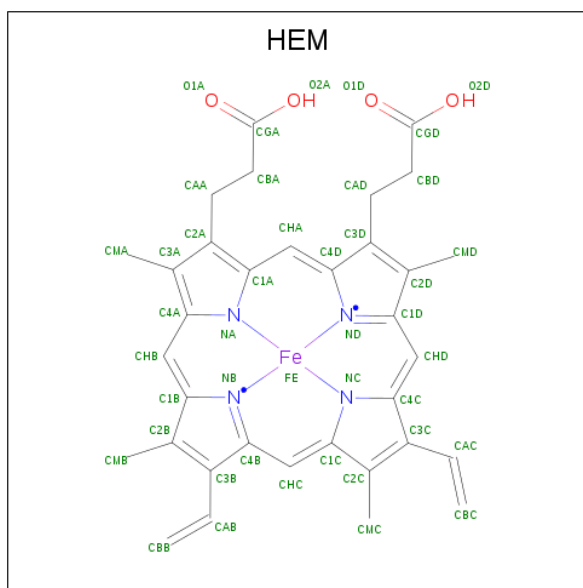
There are 7 unique types of molecules in this entry. The entry contains 7115 atoms, of which 0 are hydrogens and 0 are deuteriums.

In the tables below, the ZeroOcc column contains the number of atoms modelled with zero occupancy, the AltConf column contains the number of residues with at least one atom in alternate conformation and the Trace column contains the number of residues modelled with at most 2 atoms.

- Molecule 1 is a protein called NITRIC OXIDE SYNTHASE, BRAIN.

Mol	Chain	Residues	Atoms					ZeroOcc	AltConf	Trace
			Total	C	N	O	S			
1	A	408	Total 3320	C 2125	N 567	O 606	S 22	0	2	1
1	B	411	Total 3351	C 2144	N 574	O 612	S 21	0	2	0

- Molecule 2 is PROTOPORPHYRIN IX CONTAINING FE (three-letter code: HEM) (formula:  $C_{34}H_{32}FeN_4O_4$ ).



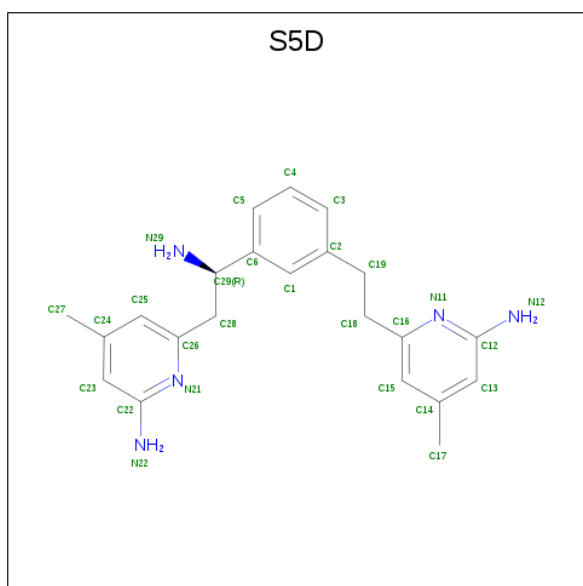
Mol	Chain	Residues	Atoms					ZeroOcc	AltConf
			Total	C	Fe	N	O		
2	A	1	Total 43	C 34	Fe 1	N 4	O 4	0	0
2	B	1	Total 43	C 34	Fe 1	N 4	O 4	0	0

- Molecule 3 is 5,6,7,8-TETRAHYDROBIOPTERIN (three-letter code: H4B) (formula:  $C_9H_{15}N_5O_3$ ).



Mol	Chain	Residues	Atoms			ZeroOcc	AltConf	
			Total	C	N			O
3	A	1	17	9	5	3	0	0
3	B	1	17	9	5	3	0	0

- Molecule 4 is (R)-6-(2-Amino-2-(3-(2-(6-amino-4-methylpyridin-2-yl)ethyl)phenyl)ethyl)-4-methylpyridin-2-amine (three-letter code: S5D) (formula:  $C_{22}H_{27}N_5$ ).



Mol	Chain	Residues	Atoms			ZeroOcc	AltConf
			Total	C	N		
4	A	1	27	22	5	0	0

*Continued on next page...*

Continued from previous page...

Mol	Chain	Residues	Atoms			ZeroOcc	AltConf
4	B	1	Total	C	N	0	0
			27	22	5		

- Molecule 5 is ACETATE ION (three-letter code: ACT) (formula: C<sub>2</sub>H<sub>3</sub>O<sub>2</sub>).



Mol	Chain	Residues	Atoms			ZeroOcc	AltConf
5	A	1	Total	C	O	0	0
			4	2	2		
5	B	1	Total	C	O	0	0
			4	2	2		

- Molecule 6 is ZINC ION (three-letter code: ZN) (formula: Zn).

Mol	Chain	Residues	Atoms		ZeroOcc	AltConf
6	A	1	Total	Zn	0	0
			1	1		

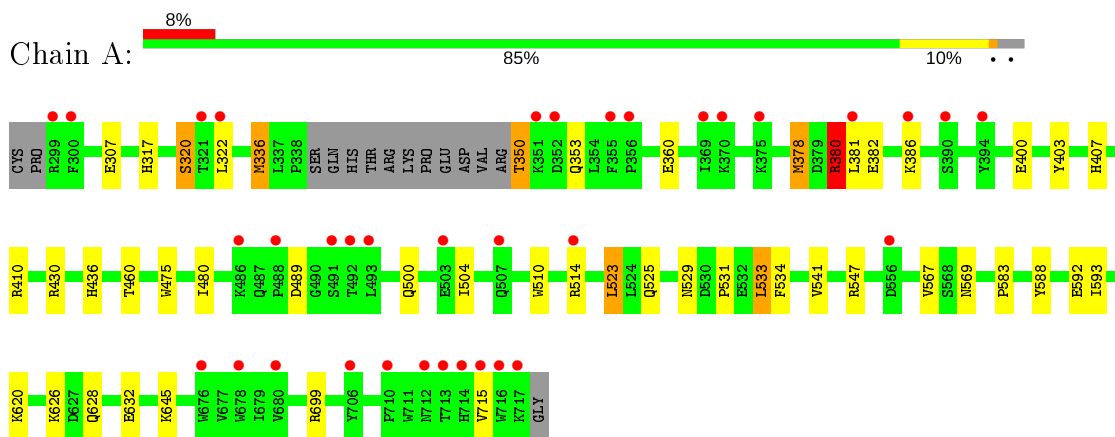
- Molecule 7 is water.

Mol	Chain	Residues	Atoms		ZeroOcc	AltConf
7	A	111	Total	O	0	0
			111	111		
7	B	150	Total	O	0	0
			150	150		

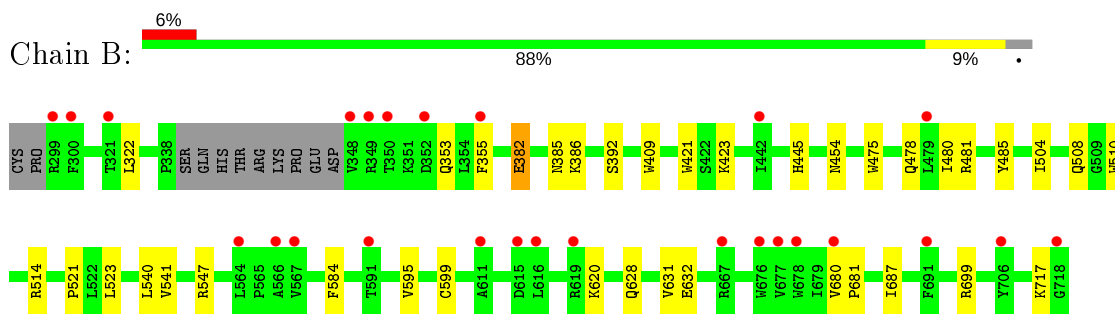
### 3 Residue-property plots [i](#)

These plots are drawn for all protein, RNA and DNA chains in the entry. The first graphic for a chain summarises the proportions of the various outlier classes displayed in the second graphic. The second graphic shows the sequence view annotated by issues in geometry and electron density. Residues are color-coded according to the number of geometric quality criteria for which they contain at least one outlier: green = 0, yellow = 1, orange = 2 and red = 3 or more. A red dot above a residue indicates a poor fit to the electron density ( $RSRZ > 2$ ). Stretches of 2 or more consecutive residues without any outlier are shown as a green connector. Residues present in the sample, but not in the model, are shown in grey.

- Molecule 1: NITRIC OXIDE SYNTHASE, BRAIN



- Molecule 1: NITRIC OXIDE SYNTHASE, BRAIN



## 4 Data and refinement statistics

Property	Value	Source
Space group	P 21 21 21	Depositor
Cell constants a, b, c, $\alpha$ , $\beta$ , $\gamma$	51.98Å 111.17Å 164.24Å 90.00° 90.00° 90.00°	Depositor
Resolution (Å)	43.96 – 2.00 43.92 – 2.00	Depositor EDS
% Data completeness (in resolution range)	99.2 (43.96-2.00) 99.3 (43.92-2.00)	Depositor EDS
$R_{merge}$	0.06	Depositor
$R_{sym}$	(Not available)	Depositor
$\langle I/\sigma(I) \rangle$ <sup>1</sup>	1.91 (at 2.00Å)	Xtrriage
Refinement program	REFMAC 5.7.0029	Depositor
R, $R_{free}$	0.186 , 0.225 0.186 , 0.225	Depositor DCC
$R_{free}$ test set	3180 reflections (4.91%)	wwPDB-VP
Wilson B-factor (Å <sup>2</sup> )	36.4	Xtrriage
Anisotropy	0.668	Xtrriage
Bulk solvent $k_{sol}$ (e/Å <sup>3</sup> ), $B_{sol}$ (Å <sup>2</sup> )	0.37 , 46.0	EDS
L-test for twinning <sup>2</sup>	$\langle  L  \rangle = 0.49$ , $\langle L^2 \rangle = 0.33$	Xtrriage
Estimated twinning fraction	No twinning to report.	Xtrriage
$F_o, F_c$ correlation	0.96	EDS
Total number of atoms	7115	wwPDB-VP
Average B, all atoms (Å <sup>2</sup> )	48.0	wwPDB-VP

Xtrriage's analysis on translational NCS is as follows: *The largest off-origin peak in the Patterson function is 4.17% of the height of the origin peak. No significant pseudotranslation is detected.*

<sup>1</sup>Intensities estimated from amplitudes.

<sup>2</sup>Theoretical values of  $\langle |L| \rangle$ ,  $\langle L^2 \rangle$  for acentric reflections are 0.5, 0.333 respectively for untwinned datasets, and 0.375, 0.2 for perfectly twinned datasets.

## 5 Model quality [i](#)

### 5.1 Standard geometry [i](#)

Bond lengths and bond angles in the following residue types are not validated in this section: HEM, ZN, S5D, H4B, ACT

The Z score for a bond length (or angle) is the number of standard deviations the observed value is removed from the expected value. A bond length (or angle) with  $|Z| > 5$  is considered an outlier worth inspection. RMSZ is the root-mean-square of all Z scores of the bond lengths (or angles).

Mol	Chain	Bond lengths		Bond angles	
		RMSZ	# Z  >5	RMSZ	# Z  >5
1	A	0.58	0/3419	0.72	4/4639 (0.1%)
1	B	0.65	0/3450	0.71	0/4677
All	All	0.62	0/6869	0.71	4/9316 (0.0%)

There are no bond length outliers.

All (4) bond angle outliers are listed below:

Mol	Chain	Res	Type	Atoms	Z	Observed(°)	Ideal(°)
1	A	410	ARG	NE-CZ-NH1	6.32	123.46	120.30
1	A	430	ARG	NE-CZ-NH1	5.28	122.94	120.30
1	A	380	ARG	NE-CZ-NH1	5.23	122.91	120.30
1	A	430	ARG	NE-CZ-NH2	-5.12	117.74	120.30

There are no chirality outliers.

There are no planarity outliers.

### 5.2 Too-close contacts [i](#)

In the following table, the Non-H and H(model) columns list the number of non-hydrogen atoms and hydrogen atoms in the chain respectively. The H(added) column lists the number of hydrogen atoms added and optimized by MolProbity. The Clashes column lists the number of clashes within the asymmetric unit, whereas Symm-Clashes lists symmetry related clashes.

Mol	Chain	Non-H	H(model)	H(added)	Clashes	Symm-Clashes
1	A	3320	0	3231	26	0
1	B	3351	0	3269	20	0
2	A	43	0	30	3	0
2	B	43	0	30	5	0
3	A	17	0	15	0	0

*Continued on next page...*



*Continued from previous page...*

Mol	Chain	Non-H	H(model)	H(added)	Clashes	Symm-Clashes
3	B	17	0	15	0	0
4	A	27	0	27	4	0
4	B	27	0	27	2	0
5	A	4	0	3	0	0
5	B	4	0	3	0	0
6	A	1	0	0	0	0
7	A	111	0	0	0	0
7	B	150	0	0	1	0
All	All	7115	0	6650	48	0

The all-atom clashscore is defined as the number of clashes found per 1000 atoms (including hydrogen atoms). The all-atom clashscore for this structure is 4.

All (48) close contacts within the same asymmetric unit are listed below, sorted by their clash magnitude.

Atom-1	Atom-2	Interatomic distance (Å)	Clash overlap (Å)
2:A:750:HEM:HMC2	2:A:750:HEM:HBC2	1.61	0.81
2:B:750:HEM:HHC	2:B:750:HEM:HBB2	1.73	0.69
1:A:307:GLU:HG3	7:B:2126:HOH:O	1.95	0.66
1:A:480:ILE:HD13	1:A:541:VAL:HG13	1.80	0.62
1:A:380:ARG:HD3	1:A:400:GLU:OE2	2.00	0.61
1:A:350:THR:N	1:A:353:GLN:HE21	1.99	0.60
1:B:322:LEU:HD13	1:B:699:ARG:HH21	1.67	0.59
1:A:317:HIS:O	1:A:320:SER:HB3	2.03	0.59
1:A:378:MET:HA	1:A:378:MET:CE	2.33	0.58
1:B:355:PHE:CE1	1:B:385:ASN:HB2	2.38	0.58
1:A:628:GLN:HG3	1:B:631:VAL:HG11	1.86	0.57
1:A:628:GLN:NE2	1:B:632:GLU:OE2	2.38	0.56
1:B:584:PHE:CD1	2:B:750:HEM:CAC	2.90	0.55
1:B:584:PHE:CD1	2:B:750:HEM:HAC	2.43	0.54
1:A:523:LEU:HD22	1:A:531:PRO:HB2	1.89	0.54
1:B:382:GLU:OE2	1:B:386:LYS:HD2	2.10	0.52
1:A:475:TRP:HB2	1:A:523:LEU:HB3	1.92	0.50
1:B:409:TRP:CE3	1:B:421:TRP:HA	2.47	0.50
2:A:750:HEM:CMC	2:A:750:HEM:HBC2	2.37	0.49
1:B:478:GLN:HB2	1:B:481:ARG:HG3	1.94	0.49
1:B:475:TRP:HB2	1:B:523:LEU:HB3	1.93	0.49
1:A:460:THR:O	1:A:583:PRO:HD2	2.13	0.48
2:B:750:HEM:HHC	2:B:750:HEM:CBB	2.44	0.47
1:A:378:MET:HA	1:A:378:MET:HE3	1.96	0.46
1:B:478:GLN:NE2	4:B:800:S5D:H4	2.30	0.46

*Continued on next page...*

Continued from previous page...

Atom-1	Atom-2	Interatomic distance (Å)	Clash overlap (Å)
1:A:510:TRP:HB2	1:A:533:LEU:HD11	1.98	0.45
1:B:504:ILE:O	1:B:508:GLN:HG2	2.17	0.44
1:B:480:ILE:HD13	1:B:541:VAL:HG13	1.99	0.44
1:A:632:GLU:OE2	1:B:628:GLN:NE2	2.50	0.44
1:A:382:GLU:HG3	1:A:386:LYS:HE2	1.99	0.43
1:B:445:HIS:C	1:B:445:HIS:CD2	2.92	0.43
1:A:436:HIS:CD2	1:A:534:PHE:HE2	2.36	0.43
1:A:322:LEU:HB2	1:A:699:ARG:HE	1.84	0.43
1:A:403:TYR:CE1	1:A:407:HIS:CE1	3.07	0.43
1:A:567:VAL:HG23	4:A:800:S5D:H15	2.01	0.43
1:B:680:VAL:HA	1:B:681:PRO:HD3	1.91	0.42
1:B:595:VAL:O	1:B:599:CYS:HB2	2.19	0.42
1:A:525:GLN:HG3	1:A:529:ASN:O	2.20	0.42
2:A:750:HEM:C1C	4:A:800:S5D:H17B	2.55	0.42
1:B:485:TYR:CE2	1:B:514:ARG:HA	2.54	0.42
1:A:567:VAL:HG22	4:A:800:S5D:H19A	2.02	0.42
1:A:592:GLU:OE1	4:A:800:S5D:N11	2.54	0.41
1:A:626:LYS:HB3	1:B:687:ILE:HD12	2.02	0.41
1:B:510:TRP:CE2	1:B:521:PRO:HD3	2.56	0.41
1:A:588:TYR:CD2	1:A:593:ILE:HD11	2.55	0.41
1:A:500:GLN:O	1:A:504:ILE:HG13	2.21	0.41
1:A:336:MET:HB3	1:A:336:MET:HE2	1.99	0.40
2:B:750:HEM:C1C	4:B:800:S5D:H17B	2.56	0.40

There are no symmetry-related clashes.

## 5.3 Torsion angles [i](#)

### 5.3.1 Protein backbone [i](#)

In the following table, the Percentiles column shows the percent Ramachandran outliers of the chain as a percentile score with respect to all X-ray entries followed by that with respect to entries of similar resolution.

The Analysed column shows the number of residues for which the backbone conformation was analysed, and the total number of residues.

Mol	Chain	Analysed	Favoured	Allowed	Outliers	Percentiles
1	A	406/422 (96%)	396 (98%)	9 (2%)	1 (0%)	47 44
1	B	409/422 (97%)	404 (99%)	5 (1%)	0	100 100

Continued on next page...

*Continued from previous page...*

Mol	Chain	Analysed	Favoured	Allowed	Outliers	Percentiles
All	All	815/844 (97%)	800 (98%)	14 (2%)	1 (0%)	51 49

All (1) Ramachandran outliers are listed below:

Mol	Chain	Res	Type
1	A	489	ASP

### 5.3.2 Protein sidechains [i](#)

In the following table, the Percentiles column shows the percent sidechain outliers of the chain as a percentile score with respect to all X-ray entries followed by that with respect to entries of similar resolution.

The Analysed column shows the number of residues for which the sidechain conformation was analysed, and the total number of residues.

Mol	Chain	Analysed	Rotameric	Outliers	Percentiles
1	A	365/377 (97%)	350 (96%)	15 (4%)	30 28
1	B	368/377 (98%)	359 (98%)	9 (2%)	49 51
All	All	733/754 (97%)	709 (97%)	24 (3%)	38 37

All (24) residues with a non-rotameric sidechain are listed below:

Mol	Chain	Res	Type
1	A	320	SER
1	A	336	MET
1	A	350	THR
1	A	360	GLU
1	A	378	MET
1	A	380	ARG
1	A	381	LEU
1	A	514	ARG
1	A	523	LEU
1	A	533	LEU
1	A	547	ARG
1	A	569	ASN
1	A	620	LYS
1	A	645	LYS
1	A	715	VAL
1	B	353	GLN
1	B	382	GLU

*Continued on next page...*

*Continued from previous page...*

Mol	Chain	Res	Type
1	B	392	SER
1	B	423	LYS
1	B	454	ASN
1	B	540	LEU
1	B	547	ARG
1	B	620	LYS
1	B	717	LYS

Some sidechains can be flipped to improve hydrogen bonding and reduce clashes. All (18) such sidechains are listed below:

Mol	Chain	Res	Type
1	A	353	GLN
1	A	425	GLN
1	A	454	ASN
1	A	478	GLN
1	A	527	ASN
1	A	569	ASN
1	A	601	ASN
1	A	605	ASN
1	A	642	GLN
1	A	697	ASN
1	B	425	GLN
1	B	454	ASN
1	B	478	GLN
1	B	507	GLN
1	B	535	GLN
1	B	601	ASN
1	B	605	ASN
1	B	697	ASN

### 5.3.3 RNA ⓘ

There are no RNA molecules in this entry.

## 5.4 Non-standard residues in protein, DNA, RNA chains ⓘ

There are no non-standard protein/DNA/RNA residues in this entry.

## 5.5 Carbohydrates [i](#)

There are no carbohydrates in this entry.

## 5.6 Ligand geometry [i](#)

Of 9 ligands modelled in this entry, 1 is monoatomic - leaving 8 for Mogul analysis.

In the following table, the Counts columns list the number of bonds (or angles) for which Mogul statistics could be retrieved, the number of bonds (or angles) that are observed in the model and the number of bonds (or angles) that are defined in the Chemical Component Dictionary. The Link column lists molecule types, if any, to which the group is linked. The Z score for a bond length (or angle) is the number of standard deviations the observed value is removed from the expected value. A bond length (or angle) with  $|Z| > 2$  is considered an outlier worth inspection. RMSZ is the root-mean-square of all Z scores of the bond lengths (or angles).

Mol	Type	Chain	Res	Link	Bond lengths			Bond angles		
					Counts	RMSZ	# Z  > 2	Counts	RMSZ	# Z  > 2
2	HEM	A	750	1	27,50,50	1.02	1 (3%)	17,82,82	1.93	5 (29%)
3	H4B	B	760	-	16,18,18	1.39	3 (18%)	11,26,26	2.37	6 (54%)
2	HEM	B	750	1	27,50,50	1.08	3 (11%)	17,82,82	1.93	5 (29%)
4	S5D	A	800	-	29,29,29	1.03	1 (3%)	36,40,40	1.62	5 (13%)
4	S5D	B	800	-	29,29,29	0.99	2 (6%)	36,40,40	2.04	7 (19%)
3	H4B	A	760	-	16,18,18	0.95	1 (6%)	11,26,26	2.62	5 (45%)
5	ACT	A	860	-	1,3,3	0.57	0	0,3,3	0.00	-
5	ACT	B	860	-	1,3,3	1.29	0	0,3,3	0.00	-

In the following table, the Chirals column lists the number of chiral outliers, the number of chiral centers analysed, the number of these observed in the model and the number defined in the Chemical Component Dictionary. Similar counts are reported in the Torsion and Rings columns. '-' means no outliers of that kind were identified.

Mol	Type	Chain	Res	Link	Chirals	Torsions	Rings
2	HEM	A	750	1	-	0/6/54/54	-
3	H4B	B	760	-	-	0/8/17/17	0/2/2/2
2	HEM	B	750	1	-	0/6/54/54	-
4	S5D	A	800	-	-	0/13/13/13	0/3/3/3
4	S5D	B	800	-	-	4/13/13/13	0/3/3/3
3	H4B	A	760	-	-	0/8/17/17	0/2/2/2

All (11) bond length outliers are listed below:

Mol	Chain	Res	Type	Atoms	Z	Observed(Å)	Ideal(Å)
2	A	750	HEM	C3B-C2B	-3.64	1.35	1.40
3	B	760	H4B	C7-C6	2.99	1.55	1.52
4	A	800	S5D	C6-C29	-2.71	1.48	1.52
4	B	800	S5D	C18-C16	2.60	1.56	1.51
3	B	760	H4B	C7-N8	2.42	1.48	1.44
3	A	760	H4B	C7-N8	2.28	1.48	1.44
2	B	750	HEM	C4D-C3D	2.26	1.47	1.42
4	B	800	S5D	C6-C29	-2.22	1.49	1.52
3	B	760	H4B	C4-N3	2.14	1.36	1.33
2	B	750	HEM	CAD-C3D	2.09	1.55	1.52
2	B	750	HEM	C3B-C2B	-2.04	1.37	1.40

All (33) bond angle outliers are listed below:

Mol	Chain	Res	Type	Atoms	Z	Observed(°)	Ideal(°)
4	B	800	S5D	C12-N11-C16	7.12	123.50	118.10
4	B	800	S5D	C15-C16-N11	-5.59	116.97	122.90
4	A	800	S5D	C12-N11-C16	5.12	121.98	118.10
2	A	750	HEM	CBD-CAD-C3D	-5.04	103.19	112.48
2	B	750	HEM	CBA-CAA-C2A	-4.65	103.91	112.49
4	B	800	S5D	C22-N21-C26	4.60	121.59	118.10
4	A	800	S5D	C22-N21-C26	4.27	121.34	118.10
4	A	800	S5D	C15-C16-N11	-4.25	118.40	122.90
2	B	750	HEM	CBD-CAD-C3D	-4.06	104.99	112.48
3	A	760	H4B	C4-C4A-N5	4.00	122.47	119.12
3	A	760	H4B	N3-C2-N1	-3.64	119.71	125.42
3	A	760	H4B	C4-N3-C2	3.54	121.55	115.93
3	A	760	H4B	C4-C4A-C8A	3.51	117.69	114.57
3	B	760	H4B	N3-C2-N1	-3.48	119.96	125.42
3	B	760	H4B	C4-C4A-C8A	3.42	117.61	114.57
3	B	760	H4B	C4-C4A-N5	3.41	121.98	119.12
3	A	760	H4B	C2-N1-C8A	3.19	121.70	114.54
3	B	760	H4B	N2-C2-N1	2.98	121.88	117.25
4	B	800	S5D	C18-C16-C15	2.97	125.15	121.22
3	B	760	H4B	C2-N1-C8A	2.85	120.93	114.54
3	B	760	H4B	C4-N3-C2	2.66	120.15	115.93
2	A	750	HEM	CMC-C2C-C3C	2.61	129.56	124.68
2	A	750	HEM	CBA-CAA-C2A	-2.58	107.73	112.49
4	A	800	S5D	C24-C25-C26	-2.57	118.63	120.32
4	B	800	S5D	C24-C25-C26	-2.47	118.70	120.32
2	B	750	HEM	C4C-C3C-C2C	2.46	108.62	106.90
4	B	800	S5D	C28-C29-C6	-2.44	106.11	111.61
2	B	750	HEM	CAD-CBD-CGD	2.38	116.67	112.67

*Continued on next page...*

*Continued from previous page...*

Mol	Chain	Res	Type	Atoms	Z	Observed(°)	Ideal(°)
4	A	800	S5D	C18-C16-C15	2.29	124.25	121.22
2	A	750	HEM	C3C-C4C-NC	-2.22	106.76	110.94
4	B	800	S5D	C14-C15-C16	2.14	121.72	120.32
2	A	750	HEM	C4C-C3C-C2C	2.13	108.39	106.90
2	B	750	HEM	C3B-C4B-NB	-2.06	106.55	109.21

There are no chirality outliers.

All (4) torsion outliers are listed below:

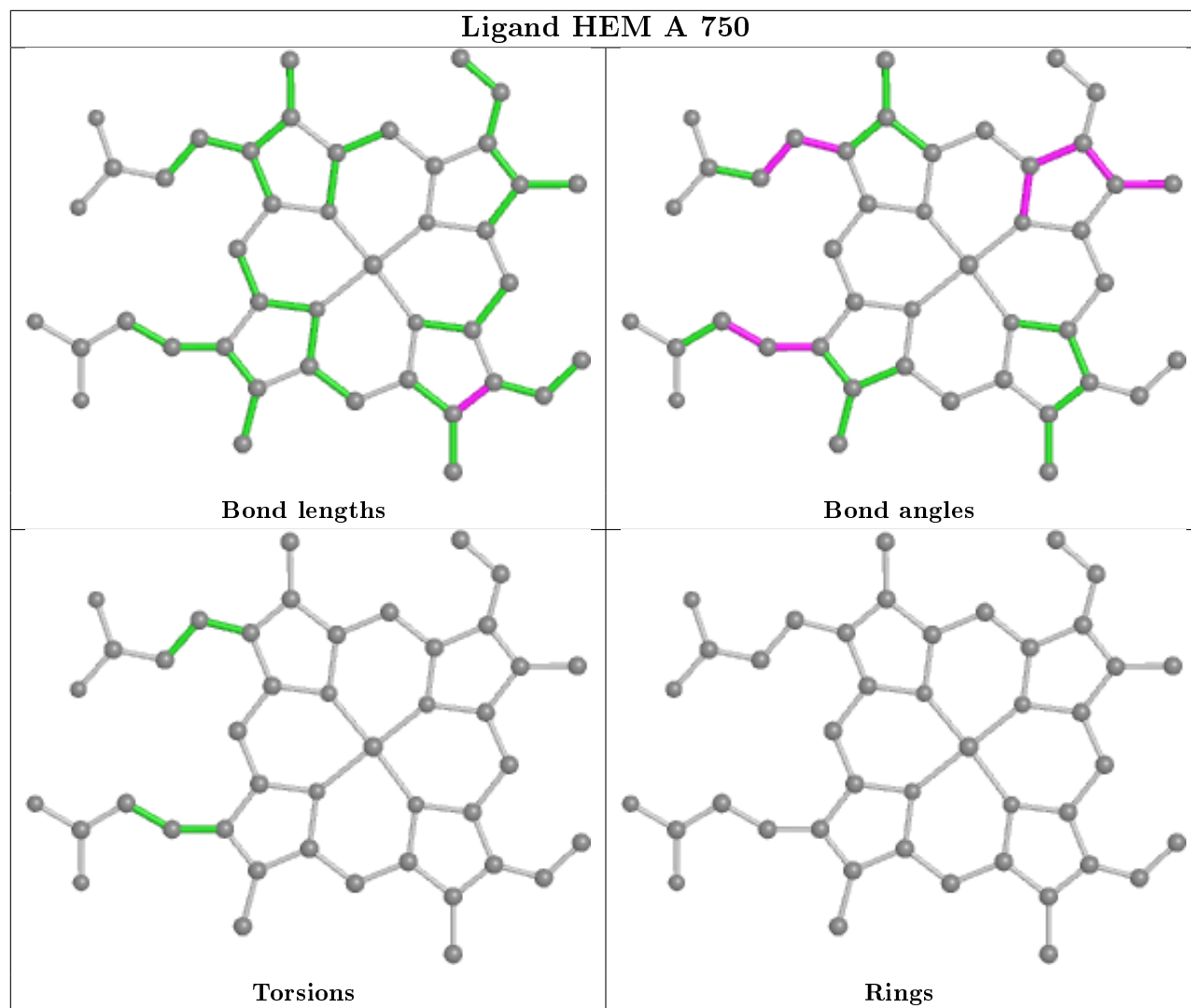
Mol	Chain	Res	Type	Atoms
4	B	800	S5D	N11-C16-C18-C19
4	B	800	S5D	C18-C19-C2-C3
4	B	800	S5D	C15-C16-C18-C19
4	B	800	S5D	C18-C19-C2-C1

There are no ring outliers.

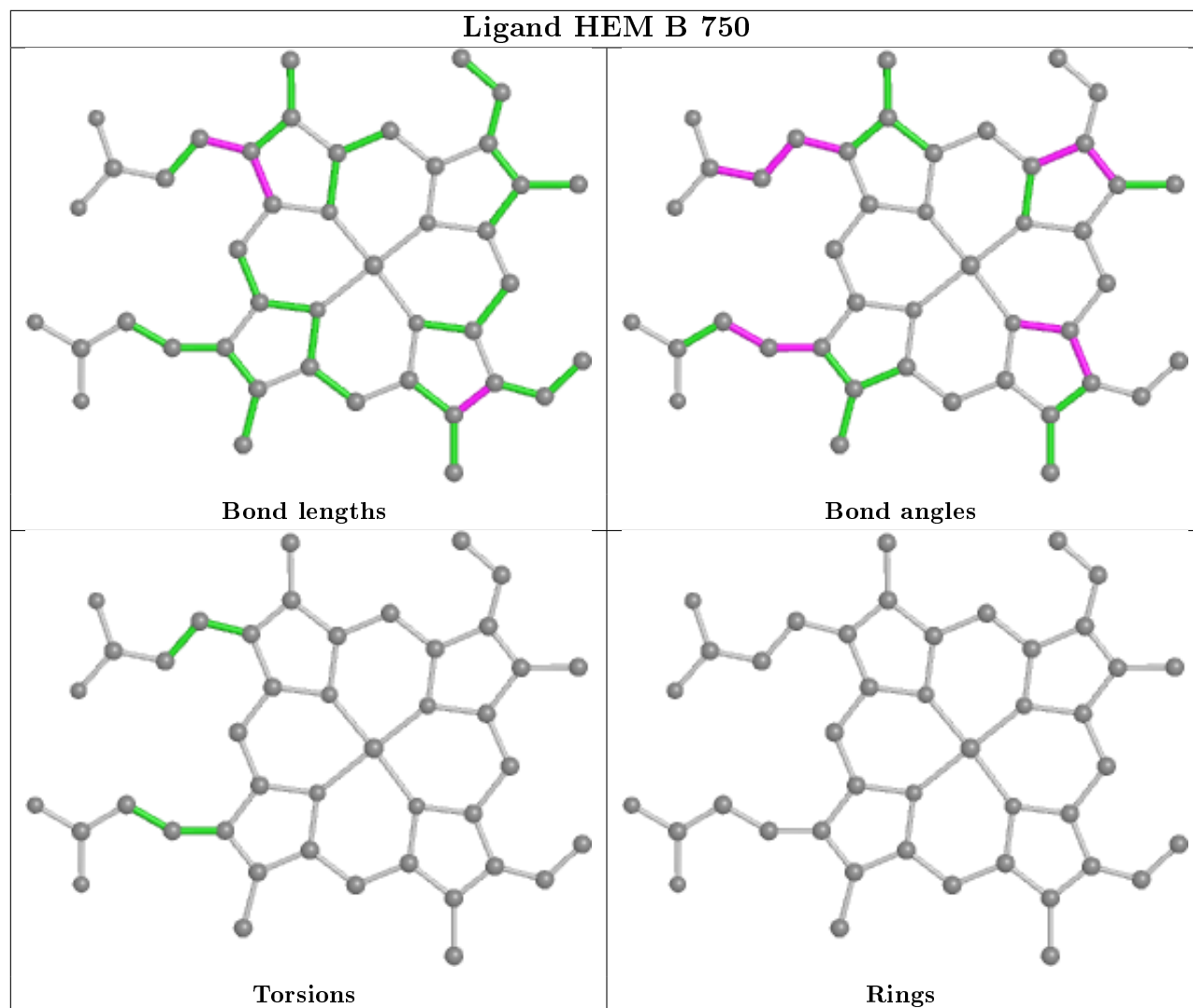
4 monomers are involved in 12 short contacts:

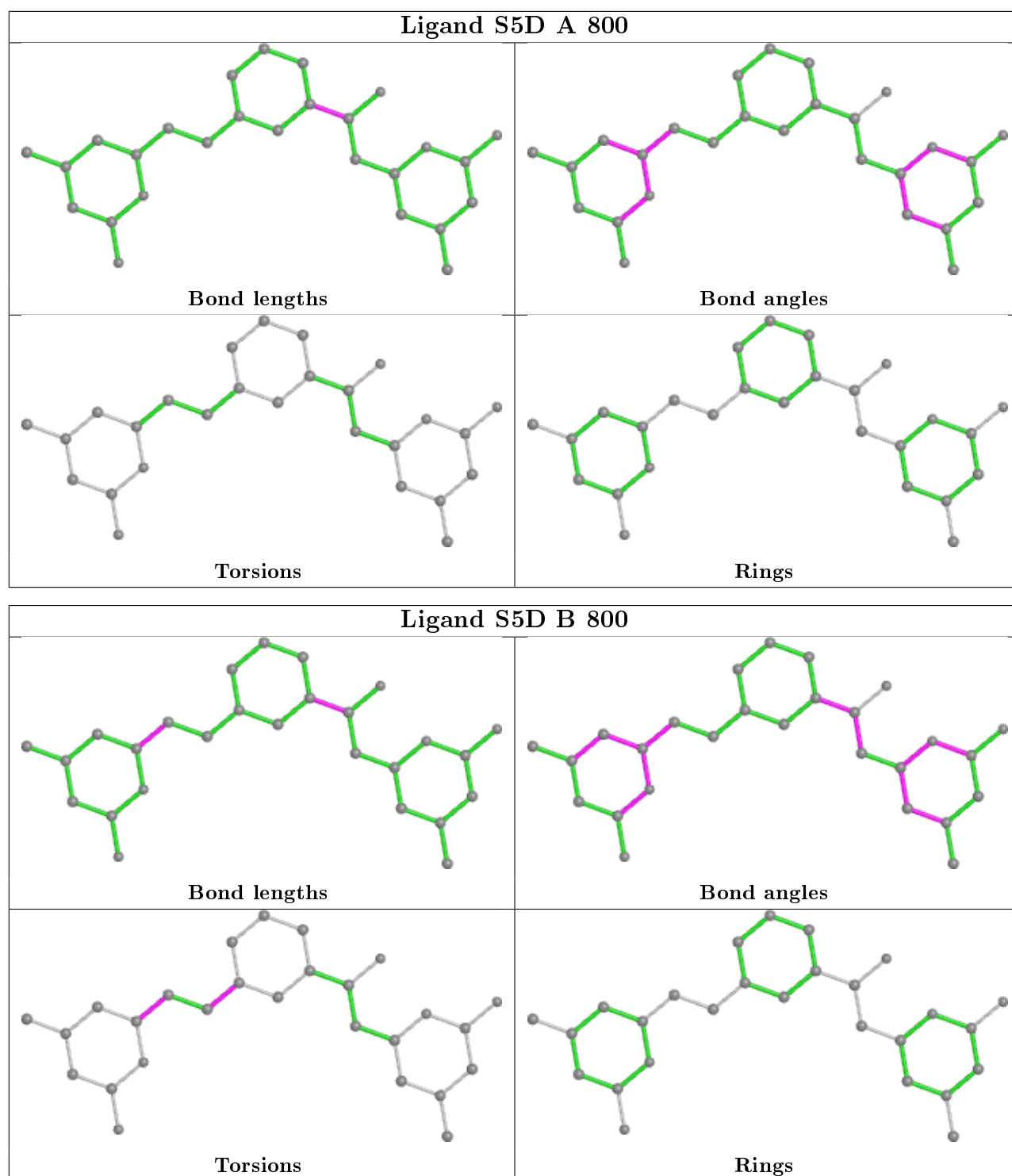
Mol	Chain	Res	Type	Clashes	Symm-Clashes
2	A	750	HEM	3	0
2	B	750	HEM	5	0
4	A	800	S5D	4	0
4	B	800	S5D	2	0

The following is a two-dimensional graphical depiction of Mogul quality analysis of bond lengths, bond angles, torsion angles, and ring geometry for all instances of the Ligand of Interest. In addition, ligands with molecular weight > 250 and outliers as shown on the validation Tables will also be included. For torsion angles, if less than 5% of the Mogul distribution of torsion angles is within 10 degrees of the torsion angle in question, then that torsion angle is considered an outlier. Any bond that is central to one or more torsion angles identified as an outlier by Mogul will be highlighted in the graph. For rings, the root-mean-square deviation (RMSD) between the ring in question and similar rings identified by Mogul is calculated over all ring torsion angles. If the average RMSD is greater than 60 degrees and the minimal RMSD between the ring in question and any Mogul-identified rings is also greater than 60 degrees, then that ring is considered an outlier. The outliers are highlighted in purple. The color gray indicates Mogul did not find sufficient equivalents in the CSD to analyse the geometry.









## 5.7 Other polymers [\(i\)](#)

There are no such residues in this entry.

## 5.8 Polymer linkage issues

There are no chain breaks in this entry.

## 6 Fit of model and data

### 6.1 Protein, DNA and RNA chains

In the following table, the column labelled '#RSRZ > 2' contains the number (and percentage) of RSRZ outliers, followed by percent RSRZ outliers for the chain as percentile scores relative to all X-ray entries and entries of similar resolution. The OWAB column contains the minimum, median, 95<sup>th</sup> percentile and maximum values of the occupancy-weighted average B-factor per residue. The column labelled 'Q < 0.9' lists the number of (and percentage) of residues with an average occupancy less than 0.9.

Mol	Chain	Analysed	<RSRZ>	#RSRZ>2	OWAB(Å <sup>2</sup> )	Q<0.9
1	A	408/422 (96%)	0.54	35 (8%) 10 9	28, 50, 86, 109	0
1	B	411/422 (97%)	0.21	26 (6%) 20 19	28, 41, 69, 91	0
All	All	819/844 (97%)	0.38	61 (7%) 14 13	28, 45, 80, 109	0

All (61) RSRZ outliers are listed below:

Mol	Chain	Res	Type	RSRZ
1	A	488	PRO	7.0
1	B	300	PHE	6.7
1	A	355	PHE	5.6
1	A	716	TRP	4.9
1	B	348	VAL	4.4
1	A	352	ASP	4.2
1	A	713	THR	3.7
1	A	322	LEU	3.6
1	A	715	VAL	3.5
1	A	299	ARG	3.4
1	B	718	GLY	3.4
1	B	350	THR	3.3
1	A	486	LYS	3.3
1	B	677	VAL	3.1
1	A	300	PHE	3.1
1	A	390	SER	3.0
1	A	717	LYS	2.9
1	A	507	GLN	2.9
1	A	514	ARG	2.8
1	A	351	LYS	2.8
1	A	493	LEU	2.7
1	B	352	ASP	2.7
1	B	567	VAL	2.6
1	B	619	ARG	2.6

*Continued on next page...*

*Continued from previous page...*

Mol	Chain	Res	Type	RSRZ
1	B	564	LEU	2.6
1	A	321	THR	2.6
1	A	370	LYS	2.5
1	A	491	SER	2.5
1	B	321	THR	2.5
1	A	706	TYR	2.5
1	A	714	HIS	2.5
1	B	676	TRP	2.5
1	A	676	TRP	2.4
1	B	706	TYR	2.4
1	B	691	PHE	2.4
1	B	611	ALA	2.4
1	A	712	ASN	2.3
1	B	680	VAL	2.3
1	B	299	ARG	2.3
1	A	386	LYS	2.3
1	B	479	LEU	2.2
1	B	349	ARG	2.2
1	A	710	PRO	2.2
1	A	381	LEU	2.2
1	A	680	VAL	2.2
1	A	356	PRO	2.2
1	A	556	ASP	2.2
1	A	369	ILE	2.2
1	B	678	TRP	2.2
1	A	503	GLU	2.2
1	B	591	THR	2.2
1	B	615	ASP	2.2
1	B	355	PHE	2.1
1	A	375	LYS	2.1
1	B	616	LEU	2.1
1	A	394	TYR	2.1
1	A	492	THR	2.1
1	A	678	TRP	2.1
1	B	566	ALA	2.0
1	B	667	ARG	2.0
1	B	442	ILE	2.0

## 6.2 Non-standard residues in protein, DNA, RNA chains

There are no non-standard protein/DNA/RNA residues in this entry.

### 6.3 Carbohydrates [i](#)

There are no carbohydrates in this entry.

### 6.4 Ligands [i](#)

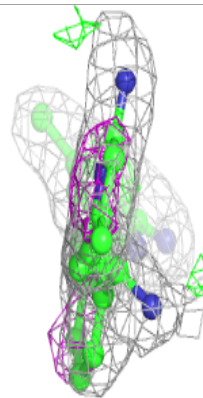
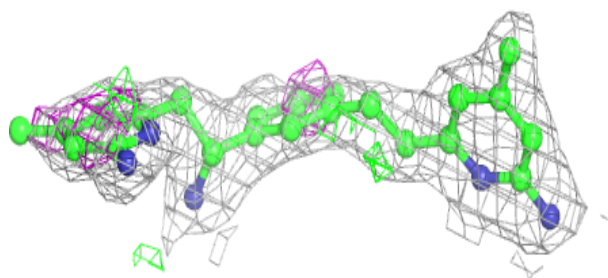
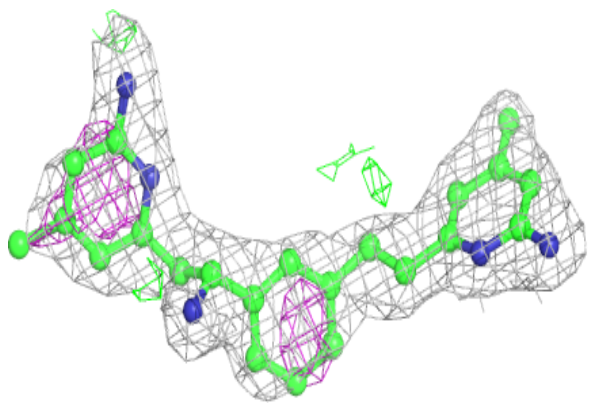
In the following table, the Atoms column lists the number of modelled atoms in the group and the number defined in the chemical component dictionary. The B-factors column lists the minimum, median, 95<sup>th</sup> percentile and maximum values of B factors of atoms in the group. The column labelled 'Q< 0.9' lists the number of atoms with occupancy less than 0.9.

Mol	Type	Chain	Res	Atoms	RSCC	RSR	B-factors(Å <sup>2</sup> )	Q<0.9
5	ACT	B	860	4/4	0.90	0.20	48,52,54,58	0
4	S5D	A	800	27/27	0.91	0.16	28,45,50,52	0
5	ACT	A	860	4/4	0.92	0.20	65,65,70,76	0
4	S5D	B	800	27/27	0.94	0.17	26,44,50,52	0
3	H4B	A	760	17/17	0.96	0.17	33,37,40,43	0
2	HEM	A	750	43/43	0.97	0.16	32,36,45,47	0
2	HEM	B	750	43/43	0.98	0.18	28,34,43,49	0
3	H4B	B	760	17/17	0.98	0.19	32,36,39,39	0
6	ZN	A	900	1/1	1.00	0.07	41,41,41,41	0

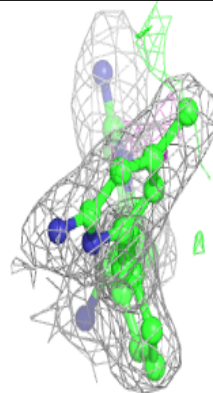
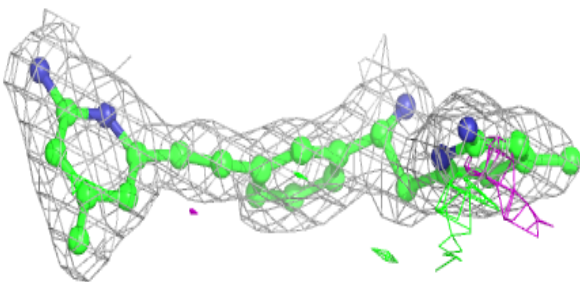
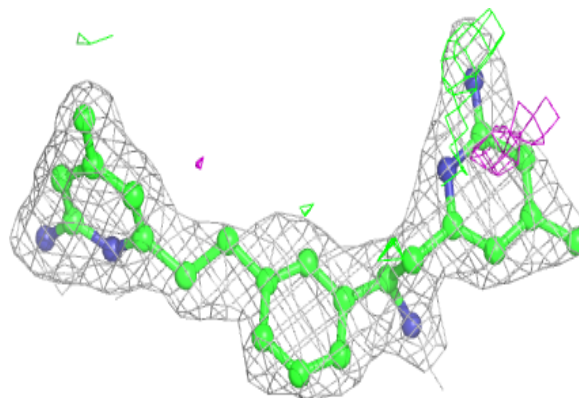
The following is a graphical depiction of the model fit to experimental electron density of all instances of the Ligand of Interest. In addition, ligands with molecular weight > 250 and outliers as shown on the geometry validation Tables will also be included. Each fit is shown from different orientation to approximate a three-dimensional view.

**Electron density around S5D A 800:**

$2mF_o-DF_c$  (at 0.7 rmsd) in gray  
 $mF_o-DF_c$  (at 3 rmsd) in purple (negative)  
and green (positive)

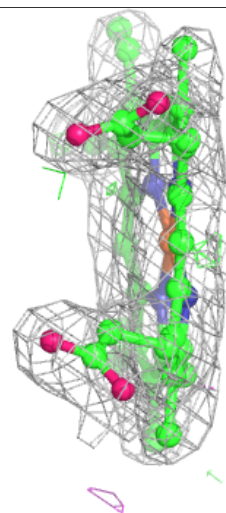
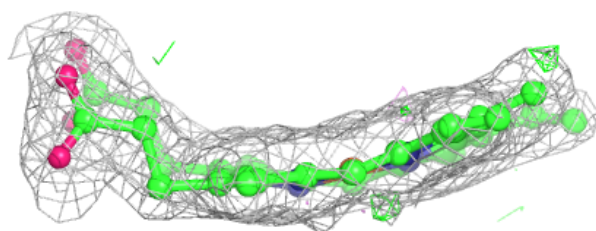
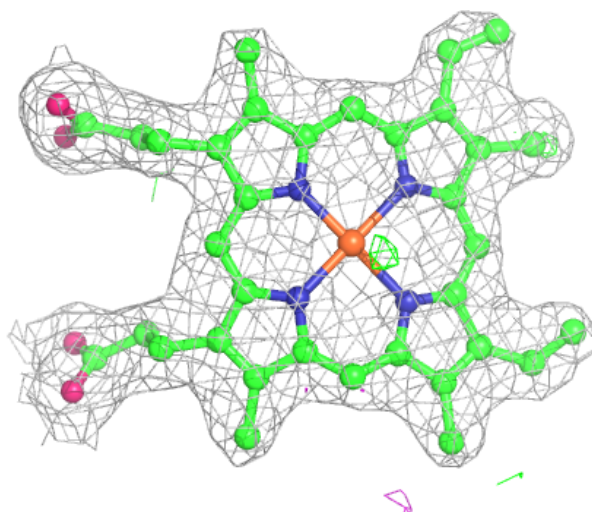
**Electron density around S5D B 800:**

$2mF_o-DF_c$  (at 0.7 rmsd) in gray  
 $mF_o-DF_c$  (at 3 rmsd) in purple (negative)  
and green (positive)

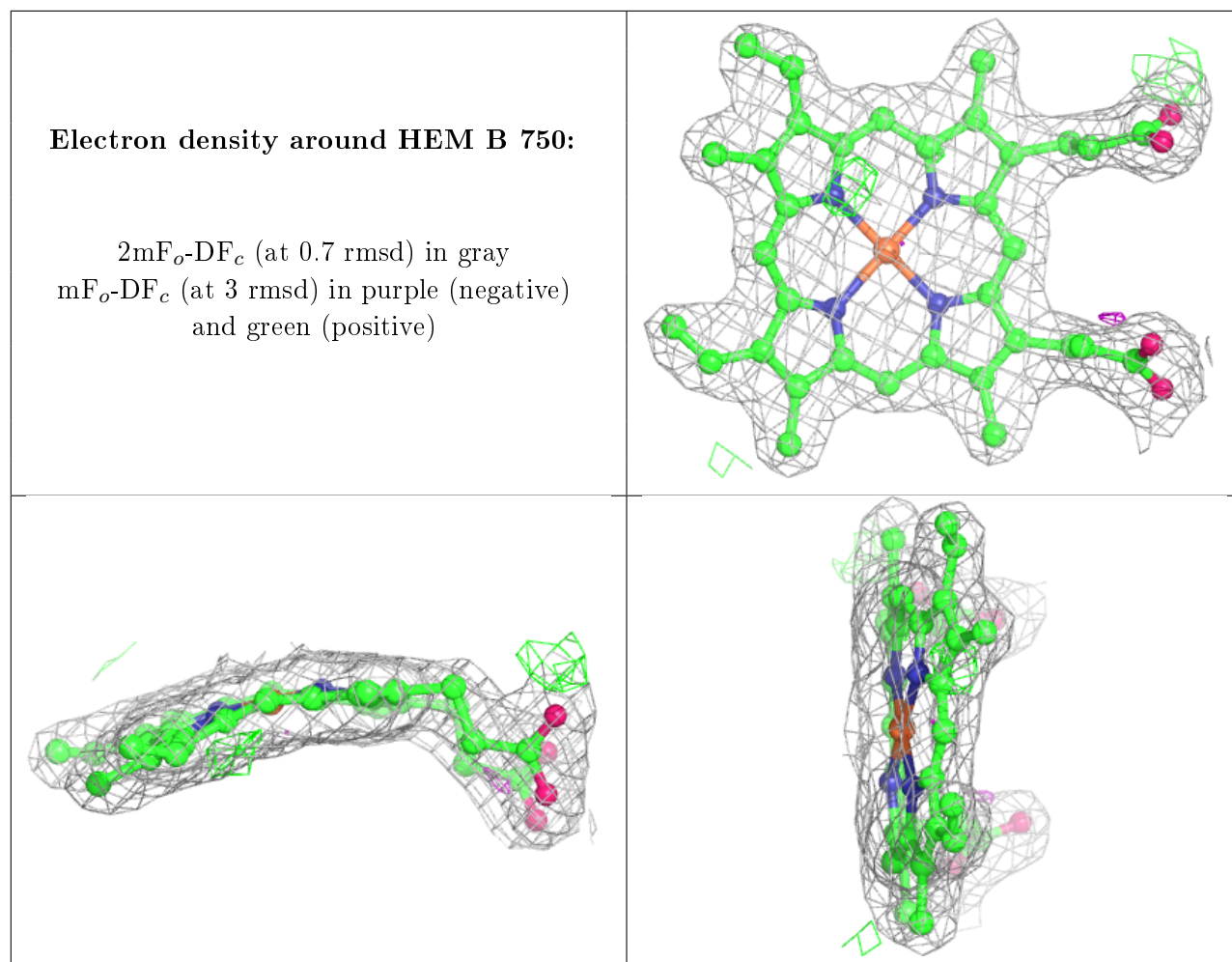


**Electron density around HEM A 750:**

$2mF_o-DF_c$  (at 0.7 rmsd) in gray  
 $mF_o-DF_c$  (at 3 rmsd) in purple (negative)  
and green (positive)







## 6.5 Other polymers [i](#)

There are no such residues in this entry.