



## Full wwPDB EM Validation Report ⓘ

Nov 20, 2022 – 10:02 PM JST

PDB ID : 7CQ5  
EMDB ID : EMD-30436  
Title : Structure of the human CLCN7-OSTM1 complex with ATP  
Authors : Yang, G.H.; Lu, Y.M.; Zhang, Y.M.; Jia, Y.T.; Li, X.M.; Lei, J.L.  
Deposited on : 2020-08-08  
Resolution : 2.60 Å (reported)

This is a Full wwPDB EM Validation Report for a publicly released PDB entry.

We welcome your comments at [validation@mail.wwpdb.org](mailto:validation@mail.wwpdb.org)

A user guide is available at

<https://www.wwpdb.org/validation/2017/EMValidationReportHelp>

with specific help available everywhere you see the ⓘ symbol.

The types of validation reports are described at

<http://www.wwpdb.org/validation/2017/FAQs#types>.

---

The following versions of software and data (see [references ⓘ](#)) were used in the production of this report:

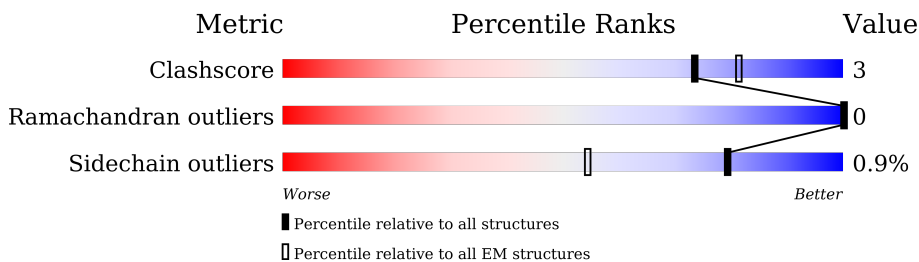
EMDB validation analysis : 0.0.1.dev43  
Mogul : 1.8.5 (274361), CSD as541be (2020)  
MolProbity : 4.02b-467  
buster-report : 1.1.7 (2018)  
Percentile statistics : 20191225.v01 (using entries in the PDB archive December 25th 2019)  
MapQ : 1.9.9  
Ideal geometry (proteins) : Engh & Huber (2001)  
Ideal geometry (DNA, RNA) : Parkinson et al. (1996)  
Validation Pipeline (wwPDB-VP) : 2.31.3

# 1 Overall quality at a glance

The following experimental techniques were used to determine the structure:  
*ELECTRON MICROSCOPY*

The reported resolution of this entry is 2.60 Å.

Percentile scores (ranging between 0-100) for global validation metrics of the entry are shown in the following graphic. The table shows the number of entries on which the scores are based.



Metric	Whole archive (#Entries)	EM structures (#Entries)
Clashscore	158937	4297
Ramachandran outliers	154571	4023
Sidechain outliers	154315	3826

The table below summarises the geometric issues observed across the polymeric chains and their fit to the map. The red, orange, yellow and green segments of the bar indicate the fraction of residues that contain outliers for  $\geq 3$ , 2, 1 and 0 types of geometric quality criteria respectively. A grey segment represents the fraction of residues that are not modelled. The numeric value for each fraction is indicated below the corresponding segment, with a dot representing fractions  $\leq 5\%$ . The upper red bar (where present) indicates the fraction of residues that have poor fit to the EM map (all-atom inclusion  $< 40\%$ ). The numeric value is given above the bar.

Mol	Chain	Length	Quality of chain
1	A	344	 15% 56% 5% 40%
1	B	344	 15% 55% 5% 40%
2	C	825	 5% 75% 8% 17%
2	D	825	 5% 73% 9% 18%
3	E	2	 50% 50%
3	F	2	 50% 50%

The following table lists non-polymeric compounds, carbohydrate monomers and non-standard residues in protein, DNA, RNA chains that are outliers for geometric or electron-density-fit criteria:

Mol	Type	Chain	Res	Chirality	Geometry	Clashes	Electron density
5	CL	D	902	-	-	X	-

## 2 Entry composition [i](#)

There are 5 unique types of molecules in this entry. The entry contains 13942 atoms, of which 0 are hydrogens and 0 are deuteriums.

In the tables below, the AltConf column contains the number of residues with at least one atom in alternate conformation and the Trace column contains the number of residues modelled with at most 2 atoms.

- Molecule 1 is a protein called Osteopetrosis-associated transmembrane protein 1.

Mol	Chain	Residues	Atoms					AltConf	Trace
			Total	C	N	O	S		
1	A	207	1630	1035	269	307	19	0	0
1	B	207	1637	1039	273	306	19	0	0

There are 20 discrepancies between the modelled and reference sequences:

Chain	Residue	Modelled	Actual	Comment	Reference
A	335	LEU	-	expression tag	UNP Q86WC4
A	336	GLU	-	expression tag	UNP Q86WC4
A	337	HIS	-	expression tag	UNP Q86WC4
A	338	HIS	-	expression tag	UNP Q86WC4
A	339	HIS	-	expression tag	UNP Q86WC4
A	340	HIS	-	expression tag	UNP Q86WC4
A	341	HIS	-	expression tag	UNP Q86WC4
A	342	HIS	-	expression tag	UNP Q86WC4
A	343	HIS	-	expression tag	UNP Q86WC4
A	344	HIS	-	expression tag	UNP Q86WC4
B	335	LEU	-	expression tag	UNP Q86WC4
B	336	GLU	-	expression tag	UNP Q86WC4
B	337	HIS	-	expression tag	UNP Q86WC4
B	338	HIS	-	expression tag	UNP Q86WC4
B	339	HIS	-	expression tag	UNP Q86WC4
B	340	HIS	-	expression tag	UNP Q86WC4
B	341	HIS	-	expression tag	UNP Q86WC4
B	342	HIS	-	expression tag	UNP Q86WC4
B	343	HIS	-	expression tag	UNP Q86WC4
B	344	HIS	-	expression tag	UNP Q86WC4

- Molecule 2 is a protein called H(+)/Cl(-) exchange transporter 7.

Mol	Chain	Residues	Atoms					AltConf	Trace
2	C	681	Total	C	N	O	S	0	0
			5289	3447	888	927	27		
2	D	679	Total	C	N	O	S	0	0
			5264	3434	884	919	27		

There are 40 discrepancies between the modelled and reference sequences:

Chain	Residue	Modelled	Actual	Comment	Reference
C	-19	MET	-	initiating methionine	UNP P51798
C	-18	ALA	-	expression tag	UNP P51798
C	-17	SER	-	expression tag	UNP P51798
C	-16	ASP	-	expression tag	UNP P51798
C	-15	TYR	-	expression tag	UNP P51798
C	-14	LYS	-	expression tag	UNP P51798
C	-13	ASP	-	expression tag	UNP P51798
C	-12	ASP	-	expression tag	UNP P51798
C	-11	ASP	-	expression tag	UNP P51798
C	-10	ASP	-	expression tag	UNP P51798
C	-9	LYS	-	expression tag	UNP P51798
C	-8	ALA	-	expression tag	UNP P51798
C	-7	SER	-	expression tag	UNP P51798
C	-6	ASP	-	expression tag	UNP P51798
C	-5	GLU	-	expression tag	UNP P51798
C	-4	VAL	-	expression tag	UNP P51798
C	-3	ASP	-	expression tag	UNP P51798
C	-2	ALA	-	expression tag	UNP P51798
C	-1	GLY	-	expression tag	UNP P51798
C	0	THR	-	expression tag	UNP P51798
D	-19	MET	-	initiating methionine	UNP P51798
D	-18	ALA	-	expression tag	UNP P51798
D	-17	SER	-	expression tag	UNP P51798
D	-16	ASP	-	expression tag	UNP P51798
D	-15	TYR	-	expression tag	UNP P51798
D	-14	LYS	-	expression tag	UNP P51798
D	-13	ASP	-	expression tag	UNP P51798
D	-12	ASP	-	expression tag	UNP P51798
D	-11	ASP	-	expression tag	UNP P51798
D	-10	ASP	-	expression tag	UNP P51798
D	-9	LYS	-	expression tag	UNP P51798
D	-8	ALA	-	expression tag	UNP P51798
D	-7	SER	-	expression tag	UNP P51798
D	-6	ASP	-	expression tag	UNP P51798
D	-5	GLU	-	expression tag	UNP P51798

*Continued on next page...*

Continued from previous page...

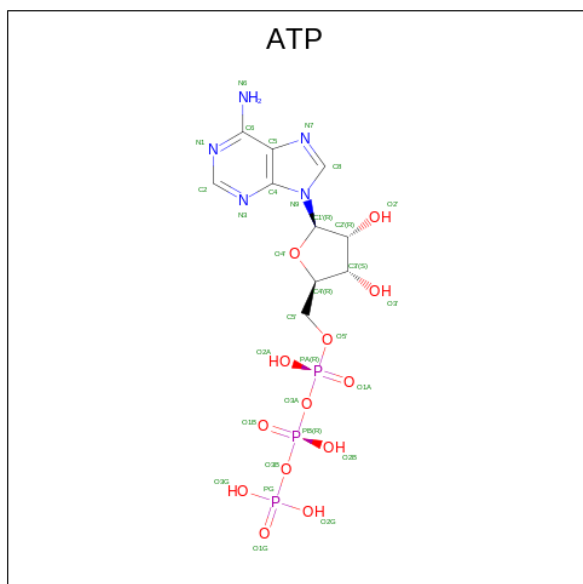
Chain	Residue	Modelled	Actual	Comment	Reference
D	-4	VAL	-	expression tag	UNP P51798
D	-3	ASP	-	expression tag	UNP P51798
D	-2	ALA	-	expression tag	UNP P51798
D	-1	GLY	-	expression tag	UNP P51798
D	0	THR	-	expression tag	UNP P51798

- Molecule 3 is an oligosaccharide called 2-acetamido-2-deoxy-beta-D-glucopyranose-(1-4)-2-acetamido-2-deoxy-beta-D-glucopyranose.



Mol	Chain	Residues	Atoms				AltConf	Trace
			Total	C	N	O		
3	E	2	Total	C	N	O	0	0
			28	16	2	10		
3	F	2	Total	C	N	O	0	0
			28	16	2	10		

- Molecule 4 is ADENOSINE-5'-TRIPHOSPHATE (three-letter code: ATP) (formula:  $C_{10}H_{16}N_5O_{13}P_3$ ).



Mol	Chain	Residues	Atoms					AltConf
			Total	C	N	O	P	
4	C	1	Total	C	N	O	P	0
			31	10	5	13	3	

Continued on next page...

*Continued from previous page...*

Mol	Chain	Residues	Atoms					AltConf
			Total	C	N	O	P	
4	D	1	31	10	5	13	3	0

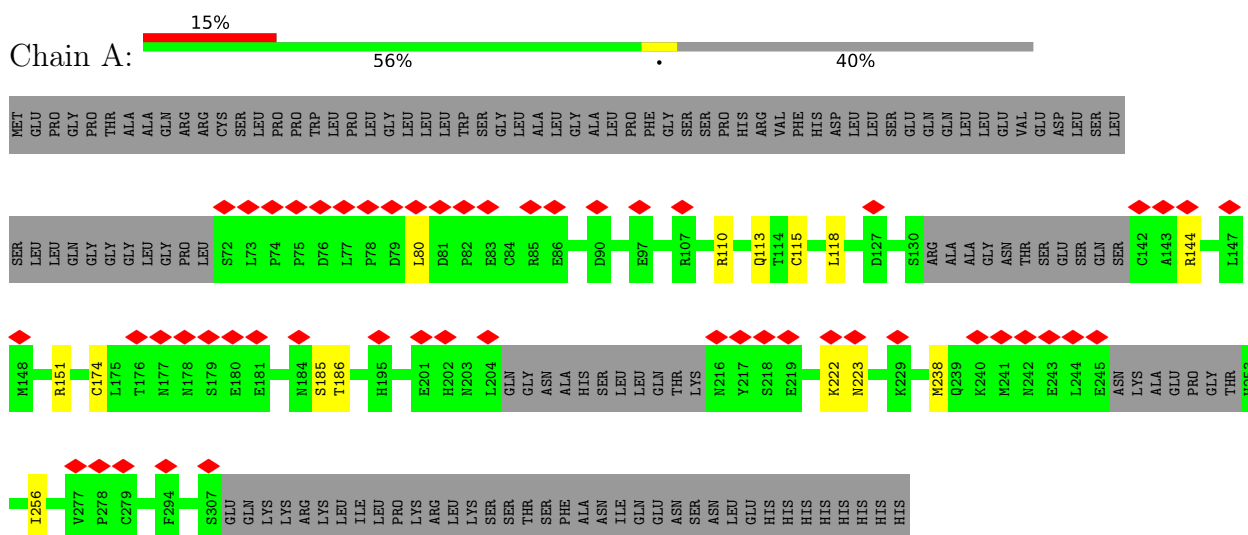
- Molecule 5 is CHLORIDE ION (three-letter code: CL) (formula: Cl).

Mol	Chain	Residues	Atoms		AltConf
5	C	2	Total	Cl	0
			2	2	
5	D	2	Total	Cl	0
			2	2	

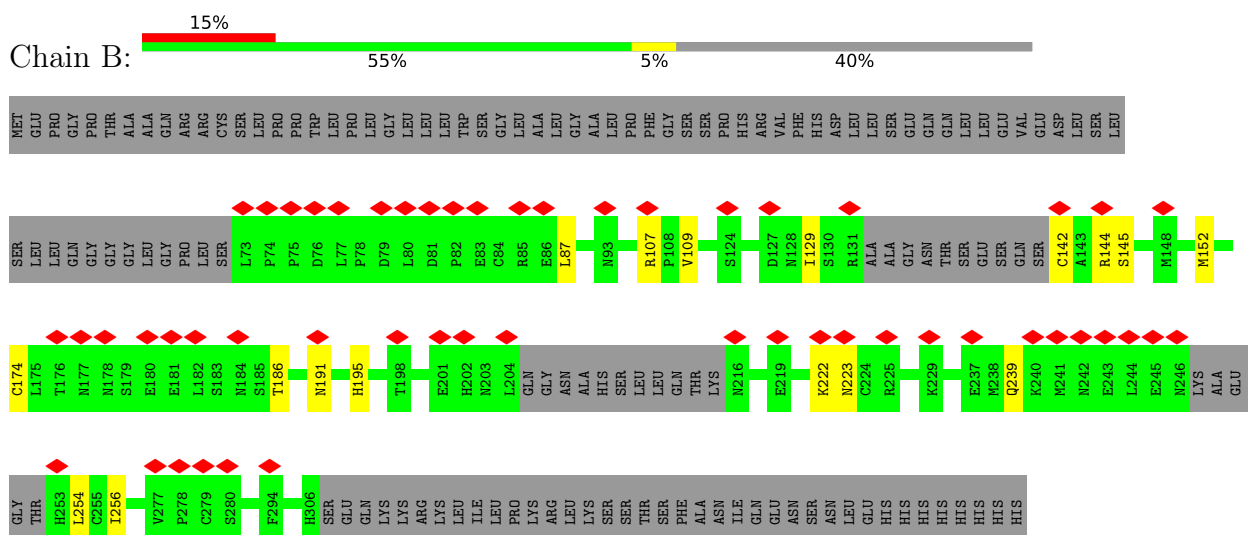
### 3 Residue-property plots

These plots are drawn for all protein, RNA, DNA and oligosaccharide chains in the entry. The first graphic for a chain summarises the proportions of the various outlier classes displayed in the second graphic. The second graphic shows the sequence view annotated by issues in geometry and atom inclusion in map density. Residues are color-coded according to the number of geometric quality criteria for which they contain at least one outlier: green = 0, yellow = 1, orange = 2 and red = 3 or more. A red diamond above a residue indicates a poor fit to the EM map for this residue (all-atom inclusion < 40%). Stretches of 2 or more consecutive residues without any outlier are shown as a green connector. Residues present in the sample, but not in the model, are shown in grey.

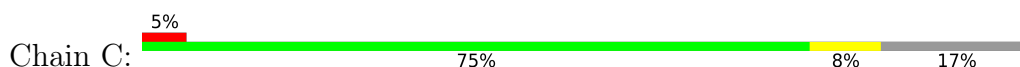
- Molecule 1: Osteopetrosis-associated transmembrane protein 1



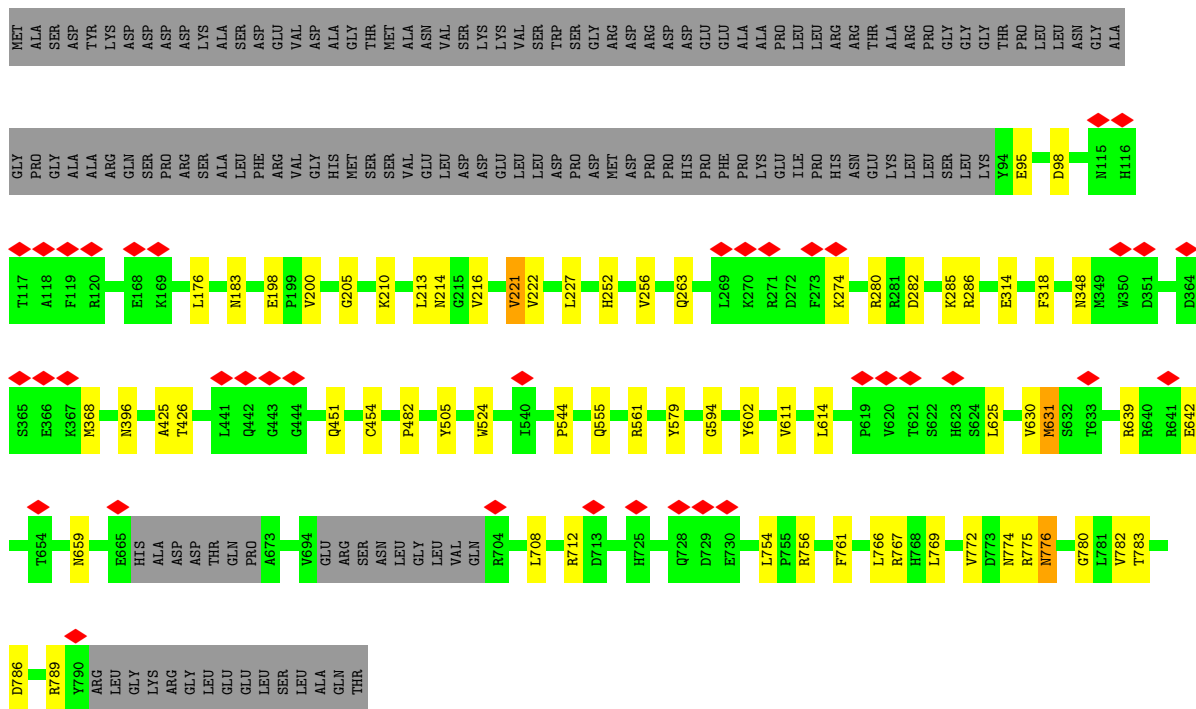
- Molecule 1: Osteopetrosis-associated transmembrane protein 1



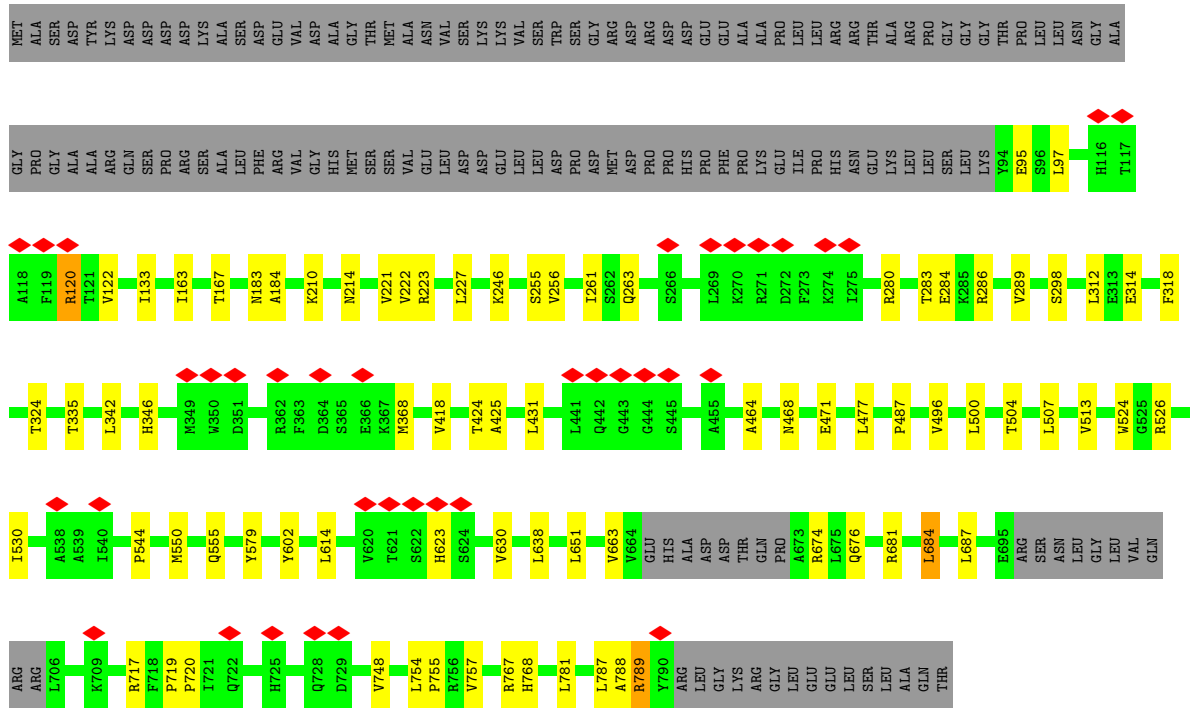
- Molecule 2: H(+)/Cl(-) exchange transporter 7







• Molecule 2: H(+)/Cl(-) exchange transporter 7



• Molecule 3: 2-acetamido-2-deoxy-beta-D-glucopyranose-(1-4)-2-acetamido-2-deoxy-beta-D-glucopyranose



A vertical legend with two colored boxes: a green box on top containing the text 'MAG1' and a yellow box on the bottom containing the text 'MAG2'.

- Molecule 3: 2-acetamido-2-deoxy-beta-D-glucopyranose-(1-4)-2-acetamido-2-deoxy-beta-D-glucopyranose

Chain F: A horizontal bar representing validation for Chain F. The bar is divided into two equal halves. The left half is green and labeled '50%' below it. The right half is orange and labeled '50%' below it.

A vertical legend with two colored boxes: a green box on top containing the text 'MAG1' and an orange box on the bottom containing the text 'MAG2'.

## 4 Experimental information

Property	Value	Source
EM reconstruction method	SINGLE PARTICLE	Depositor
Imposed symmetry	POINT, Not provided	
Number of particles used	228250	Depositor
Resolution determination method	FSC 0.143 CUT-OFF	Depositor
CTF correction method	NONE	Depositor
Microscope	FEI TITAN KRIOS	Depositor
Voltage (kV)	300	Depositor
Electron dose ( $e^-/\text{\AA}^2$ )	1.5625	Depositor
Minimum defocus (nm)	Not provided	
Maximum defocus (nm)	Not provided	
Magnification	Not provided	
Image detector	GATAN K2 SUMMIT (4k x 4k)	Depositor
Maximum map value	0.174	Depositor
Minimum map value	-0.079	Depositor
Average map value	0.000	Depositor
Map value standard deviation	0.005	Depositor
Recommended contour level	0.034	Depositor
Map size ( $\text{\AA}$ )	303.1, 303.1, 303.1	wwPDB
Map dimensions	280, 280, 280	wwPDB
Map angles ( $^\circ$ )	90.0, 90.0, 90.0	wwPDB
Pixel spacing ( $\text{\AA}$ )	1.0825, 1.0825, 1.0825	Depositor

## 5 Model quality i

### 5.1 Standard geometry i

Bond lengths and bond angles in the following residue types are not validated in this section: CL, ATP, NAG

The Z score for a bond length (or angle) is the number of standard deviations the observed value is removed from the expected value. A bond length (or angle) with  $|Z| > 5$  is considered an outlier worth inspection. RMSZ is the root-mean-square of all Z scores of the bond lengths (or angles).

Mol	Chain	Bond lengths		Bond angles	
		RMSZ	# Z  >5	RMSZ	# Z  >5
1	A	0.32	0/1661	0.58	0/2256
1	B	0.32	0/1668	0.55	0/2265
2	C	0.36	0/5414	0.60	1/7354 (0.0%)
2	D	0.37	0/5388	0.61	2/7319 (0.0%)
All	All	0.36	0/14131	0.60	3/19194 (0.0%)

There are no bond length outliers.

All (3) bond angle outliers are listed below:

Mol	Chain	Res	Type	Atoms	Z	Observed(°)	Ideal(°)
2	C	98	ASP	CB-CG-OD1	9.38	126.74	118.30
2	D	787	LEU	CA-CB-CG	8.06	133.84	115.30
2	D	684	LEU	CA-CB-CG	6.60	130.47	115.30

There are no chirality outliers.

There are no planarity outliers.

### 5.2 Too-close contacts i

In the following table, the Non-H and H(model) columns list the number of non-hydrogen atoms and hydrogen atoms in the chain respectively. The H(added) column lists the number of hydrogen atoms added and optimized by MolProbity. The Clashes column lists the number of clashes within the asymmetric unit, whereas Symm-Clashes lists symmetry-related clashes.

Mol	Chain	Non-H	H(model)	H(added)	Clashes	Symm-Clashes
1	A	1630	0	1573	8	0
1	B	1637	0	1582	9	0
2	C	5289	0	5367	36	0
2	D	5264	0	5354	43	0

*Continued on next page...*

*Continued from previous page...*

Mol	Chain	Non-H	H(model)	H(added)	Clashes	Symm-Clashes
3	E	28	0	24	0	0
3	F	28	0	24	1	0
4	C	31	0	12	2	0
4	D	31	0	12	0	0
5	C	2	0	0	1	0
5	D	2	0	0	2	0
All	All	13942	0	13948	91	0

The all-atom clashscore is defined as the number of clashes found per 1000 atoms (including hydrogen atoms). The all-atom clashscore for this structure is 3.

All (91) close contacts within the same asymmetric unit are listed below, sorted by their clash magnitude.

Atom-1	Atom-2	Interatomic distance (Å)	Clash overlap (Å)
2:D:183:ASN:HD22	2:D:425:ALA:HB2	1.59	0.67
2:D:602:TYR:OH	5:D:902:CL:CL	2.52	0.65
2:C:263:GLN:HG3	2:C:280:ARG:HG2	1.80	0.64
2:D:120:ARG:HE	2:D:122:VAL:HG22	1.63	0.64
1:B:174:CYS:HA	1:B:186:THR:HG21	1.81	0.63
2:C:602:TYR:OH	5:C:903:CL:CL	2.53	0.63
2:D:210:LYS:HG3	2:D:314:GLU:HG2	1.79	0.62
1:A:151:ARG:HA	3:F:2:NAG:H62	1.82	0.62
2:D:298:SER:OG	2:D:335:THR:OG1	2.18	0.61
2:C:183:ASN:HD22	2:C:425:ALA:HB2	1.65	0.60
1:B:142:CYS:HB2	1:B:145:SER:HB3	1.82	0.60
1:A:174:CYS:HA	1:A:186:THR:HG21	1.85	0.58
2:D:524:TRP:HE1	2:D:555:GLN:HE21	1.51	0.58
2:C:221:VAL:HG23	2:C:222:VAL:HG22	1.86	0.58
2:D:222:VAL:HA	2:D:256:VAL:HG22	1.85	0.57
1:A:222:LYS:HD3	1:A:223:ASN:HB2	1.86	0.57
2:C:625:LEU:HD23	2:C:754:LEU:HD22	1.85	0.57
1:A:115:CYS:HB2	1:A:118:LEU:HB2	1.87	0.56
2:C:767:ARG:NH2	4:C:901:ATP:O3G	2.38	0.56
1:B:222:LYS:HD3	1:B:223:ASN:HB2	1.87	0.55
2:C:774:ASN:HD21	2:D:676:GLN:HE22	1.54	0.55
1:B:87:LEU:HD23	1:B:129:ILE:HG22	1.89	0.55
2:C:222:VAL:HA	2:C:256:VAL:HG22	1.89	0.55
2:D:614:LEU:HD23	2:D:788:ALA:HB2	1.90	0.54
2:D:630:VAL:HG12	2:D:789:ARG:HH21	1.72	0.54
1:A:110:ARG:HG3	1:A:113:GLN:HE21	1.73	0.54
2:C:227:LEU:HB2	2:C:256:VAL:HG11	1.89	0.54

*Continued on next page...*

*Continued from previous page...*

Atom-1	Atom-2	Interatomic distance (Å)	Clash overlap (Å)
2:D:246:LYS:NZ	2:D:471:GLU:OE2	2.37	0.54
2:C:176:LEU:HD11	2:C:426:THR:HG22	1.90	0.54
2:C:524:TRP:HE1	2:C:555:GLN:HE21	1.54	0.54
2:D:255:SER:HB2	2:D:289:VAL:HG13	1.88	0.54
2:D:342:LEU:O	2:D:346:HIS:ND1	2.36	0.53
1:B:239:GLN:HA	1:B:254:LEU:HD21	1.91	0.53
2:C:214:ASN:HD21	2:C:614:LEU:H	1.58	0.52
2:D:227:LEU:HB2	2:D:256:VAL:HG11	1.92	0.52
2:C:631:MET:HG3	2:C:780:GLY:HA3	1.92	0.52
2:C:451:GLN:NE2	2:C:454:CYS:O	2.41	0.51
2:D:504:THR:HG23	2:D:507:LEU:HD12	1.93	0.51
2:D:651:LEU:HD22	2:D:681:ARG:HG3	1.93	0.50
2:D:477:LEU:O	2:D:526:ARG:NH2	2.44	0.50
2:D:638:LEU:HB2	2:D:663:VAL:HG12	1.94	0.50
2:C:95:GLU:OE1	2:C:659:ASN:ND2	2.45	0.49
2:D:424:THR:HG22	2:D:500:LEU:HD22	1.93	0.49
2:D:368:MET:O	2:D:579:TYR:OH	2.26	0.49
2:D:754:LEU:HA	2:D:757:VAL:HG22	1.95	0.48
2:C:786:ASP:HA	2:C:789:ARG:HE	1.78	0.48
2:C:630:VAL:HG21	2:C:754:LEU:HD13	1.94	0.47
2:D:651:LEU:HD11	2:D:684:LEU:HD23	1.96	0.47
1:B:191:ASN:O	1:B:195:HIS:ND1	2.37	0.47
2:D:97:LEU:HD11	2:D:286:ARG:HD2	1.97	0.47
2:D:464:ALA:O	2:D:468:ASN:ND2	2.47	0.47
2:D:312:LEU:HD21	2:D:324:THR:HG22	1.97	0.47
2:C:216:VAL:HG11	2:C:611:VAL:HG13	1.98	0.46
2:D:487:PRO:HG3	2:D:530:ILE:HG21	1.98	0.46
2:D:431:LEU:HD11	2:D:496:VAL:HG21	1.97	0.46
2:D:623:HIS:CD2	2:D:755:PRO:HG2	2.50	0.46
2:C:561:ARG:HE	2:C:594:GLY:HA3	1.81	0.46
2:D:263:GLN:HE22	2:D:280:ARG:HA	1.81	0.46
2:C:368:MET:O	2:C:579:TYR:OH	2.25	0.45
2:C:213:LEU:O	2:C:286:ARG:NH2	2.49	0.45
2:C:769:LEU:HB3	2:C:782:VAL:HB	1.99	0.45
2:C:482:PRO:HG3	2:C:544:PRO:HD2	2.00	0.44
2:D:184:ALA:HB1	2:D:418:VAL:HG13	2.00	0.44
2:C:205:GLY:HA3	2:C:252:HIS:HB2	1.99	0.44
2:C:786:ASP:N	2:C:786:ASP:OD1	2.44	0.44
2:D:768:HIS:HD2	2:D:781:LEU:HD21	1.82	0.44
2:C:198:GLU:HG3	2:C:200:VAL:HG12	1.99	0.43
2:C:318:PHE:HA	2:D:318:PHE:HA	2.00	0.43

*Continued on next page...*

Continued from previous page...

Atom-1	Atom-2	Interatomic distance (Å)	Clash overlap (Å)
2:C:772:VAL:HG21	2:C:776:ASN:HD22	1.82	0.43
2:D:95:GLU:OE1	2:D:767:ARG:NH2	2.52	0.43
2:C:761:PHE:HA	2:C:766:LEU:HD12	2.01	0.43
2:C:280:ARG:HB2	2:C:712:ARG:HD2	2.00	0.42
2:C:775:ARG:HG3	2:D:674:ARG:HE	1.85	0.42
2:D:221:VAL:HG13	2:D:222:VAL:HG13	2.01	0.42
1:B:109:VAL:HG11	1:B:256:ILE:HG13	2.01	0.42
1:A:80:LEU:HD11	1:B:107:ARG:HB3	2.02	0.42
2:D:163:ILE:O	2:D:167:THR:OG1	2.29	0.41
2:C:396:ASN:HD21	2:C:505:TYR:HD2	1.69	0.41
2:C:639:ARG:HB2	2:C:642:GLU:HB3	2.03	0.41
2:D:513:VAL:HG12	5:D:902:CL:CL	2.57	0.41
2:C:282:ASP:HA	2:C:285:LYS:HB3	2.02	0.41
2:D:748:VAL:HG11	2:D:757:VAL:HG12	2.02	0.41
2:C:783:THR:HB	4:C:901:ATP:H2'	2.02	0.41
2:D:283:THR:OG1	2:D:284:GLU:N	2.53	0.41
2:D:133:ILE:HG13	2:D:261:ILE:HD11	2.02	0.41
1:A:256:ILE:HG12	1:B:152:MET:HE2	2.03	0.41
2:D:223:ARG:HH22	2:D:717:ARG:HH11	1.69	0.41
1:A:185:SER:OG	1:A:238:MET:SD	2.77	0.41
2:D:526:ARG:HD2	2:D:544:PRO:HB2	2.03	0.41
2:C:210:LYS:HG2	2:C:314:GLU:HG3	2.02	0.40
2:D:719:PRO:HA	2:D:720:PRO:HD3	1.95	0.40

There are no symmetry-related clashes.

## 5.3 Torsion angles [\(i\)](#)

### 5.3.1 Protein backbone [\(i\)](#)

In the following table, the Percentiles column shows the percent Ramachandran outliers of the chain as a percentile score with respect to all PDB entries followed by that with respect to all EM entries.

The Analysed column shows the number of residues for which the backbone conformation was analysed, and the total number of residues.

Mol	Chain	Analysed	Favoured	Allowed	Outliers	Percentiles	
1	A	199/344 (58%)	178 (89%)	21 (11%)	0	100	100
1	B	199/344 (58%)	180 (90%)	19 (10%)	0	100	100

Continued on next page...

Continued from previous page...

Mol	Chain	Analysed	Favoured	Allowed	Outliers	Percentiles	
2	C	675/825 (82%)	634 (94%)	41 (6%)	0	100	100
2	D	673/825 (82%)	625 (93%)	48 (7%)	0	100	100
All	All	1746/2338 (75%)	1617 (93%)	129 (7%)	0	100	100

There are no Ramachandran outliers to report.

### 5.3.2 Protein sidechains [i](#)

In the following table, the Percentiles column shows the percent sidechain outliers of the chain as a percentile score with respect to all PDB entries followed by that with respect to all EM entries.

The Analysed column shows the number of residues for which the sidechain conformation was analysed, and the total number of residues.

Mol	Chain	Analysed	Rotameric	Outliers	Percentiles	
1	A	190/312 (61%)	189 (100%)	1 (0%)	88	96
1	B	190/312 (61%)	189 (100%)	1 (0%)	88	96
2	C	567/690 (82%)	560 (99%)	7 (1%)	71	87
2	D	564/690 (82%)	559 (99%)	5 (1%)	78	91
All	All	1511/2004 (75%)	1497 (99%)	14 (1%)	79	91

All (14) residues with a non-rotameric sidechain are listed below:

Mol	Chain	Res	Type
1	A	144	ARG
1	B	144	ARG
2	C	221	VAL
2	C	274	LYS
2	C	348	ASN
2	C	631	MET
2	C	708	LEU
2	C	756	ARG
2	C	776	ASN
2	D	120	ARG
2	D	214	ASN
2	D	550	MET
2	D	687	LEU
2	D	789	ARG



Sometimes sidechains can be flipped to improve hydrogen bonding and reduce clashes. All (12) such sidechains are listed below:

Mol	Chain	Res	Type
1	A	113	GLN
2	C	183	ASN
2	C	220	HIS
2	C	263	GLN
2	C	348	ASN
2	C	555	GLN
2	D	183	ASN
2	D	214	ASN
2	D	263	GLN
2	D	396	ASN
2	D	555	GLN
2	D	676	GLN

### 5.3.3 RNA [i](#)

There are no RNA molecules in this entry.

## 5.4 Non-standard residues in protein, DNA, RNA chains [i](#)

There are no non-standard protein/DNA/RNA residues in this entry.

## 5.5 Carbohydrates [i](#)

4 monosaccharides are modelled in this entry.

In the following table, the Counts columns list the number of bonds (or angles) for which Mogul statistics could be retrieved, the number of bonds (or angles) that are observed in the model and the number of bonds (or angles) that are defined in the Chemical Component Dictionary. The Link column lists molecule types, if any, to which the group is linked. The Z score for a bond length (or angle) is the number of standard deviations the observed value is removed from the expected value. A bond length (or angle) with  $|Z| > 2$  is considered an outlier worth inspection. RMSZ is the root-mean-square of all Z scores of the bond lengths (or angles).

Mol	Type	Chain	Res	Link	Bond lengths			Bond angles		
					Counts	RMSZ	$\# Z  > 2$	Counts	RMSZ	$\# Z  > 2$
3	NAG	E	1	3,1	14,14,15	0.19	0	17,19,21	0.48	0
3	NAG	E	2	3	14,14,15	0.29	0	17,19,21	0.65	1 (5%)
3	NAG	F	1	3,1	14,14,15	0.22	0	17,19,21	0.60	0
3	NAG	F	2	3	14,14,15	0.20	0	17,19,21	0.78	1 (5%)

In the following table, the Chirals column lists the number of chiral outliers, the number of chiral centers analysed, the number of these observed in the model and the number defined in the Chemical Component Dictionary. Similar counts are reported in the Torsion and Rings columns. '-' means no outliers of that kind were identified.

Mol	Type	Chain	Res	Link	Chirals	Torsions	Rings
3	NAG	E	1	3,1	-	1/6/23/26	0/1/1/1
3	NAG	E	2	3	-	2/6/23/26	0/1/1/1
3	NAG	F	1	3,1	-	2/6/23/26	0/1/1/1
3	NAG	F	2	3	-	0/6/23/26	0/1/1/1

There are no bond length outliers.

All (2) bond angle outliers are listed below:

Mol	Chain	Res	Type	Atoms	Z	Observed(°)	Ideal(°)
3	F	2	NAG	C1-O5-C5	2.88	116.09	112.19
3	E	2	NAG	C1-O5-C5	2.28	115.29	112.19

There are no chirality outliers.

All (5) torsion outliers are listed below:

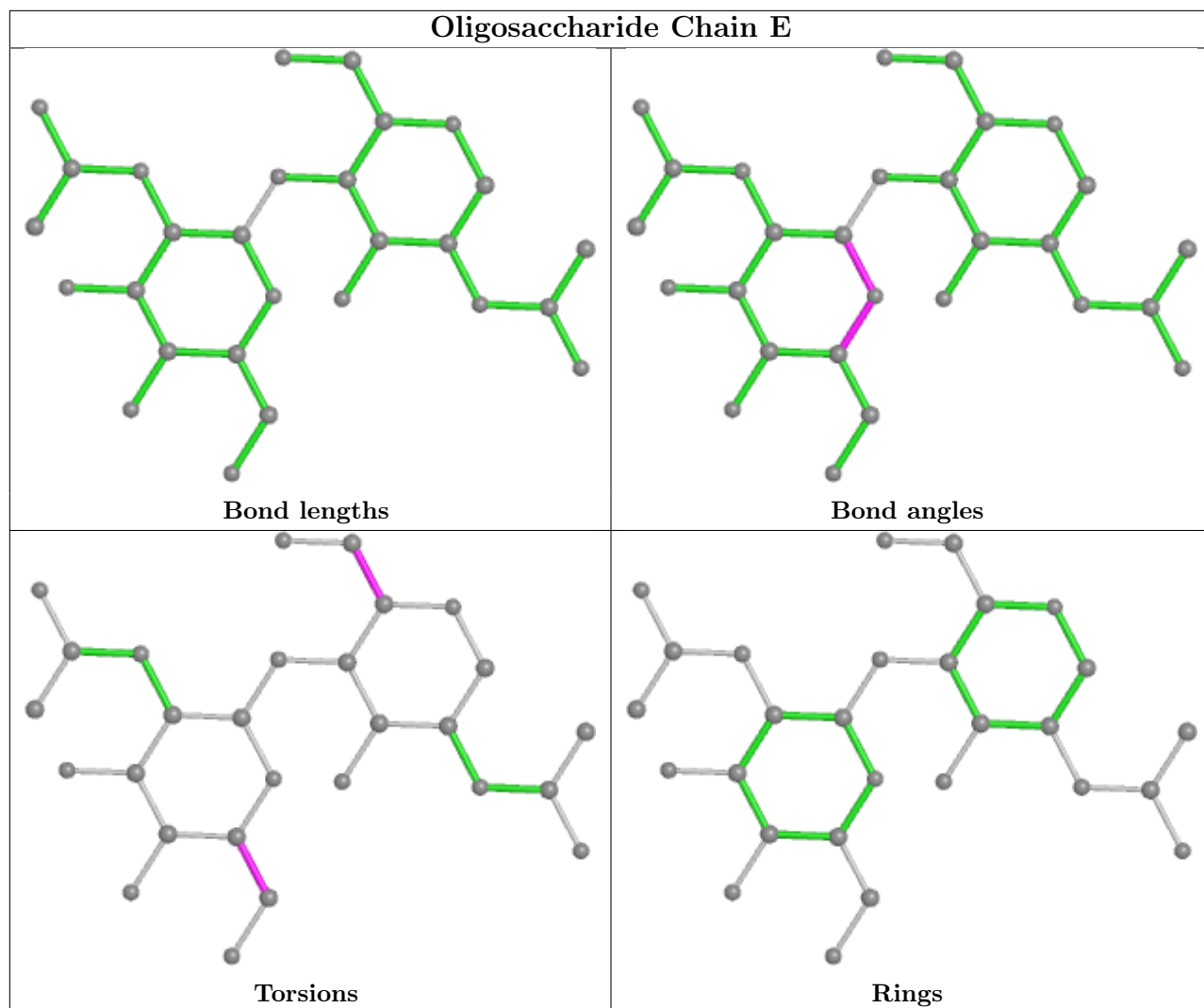
Mol	Chain	Res	Type	Atoms
3	E	2	NAG	O5-C5-C6-O6
3	E	2	NAG	C4-C5-C6-O6
3	F	1	NAG	O5-C5-C6-O6
3	F	1	NAG	C4-C5-C6-O6
3	E	1	NAG	O5-C5-C6-O6

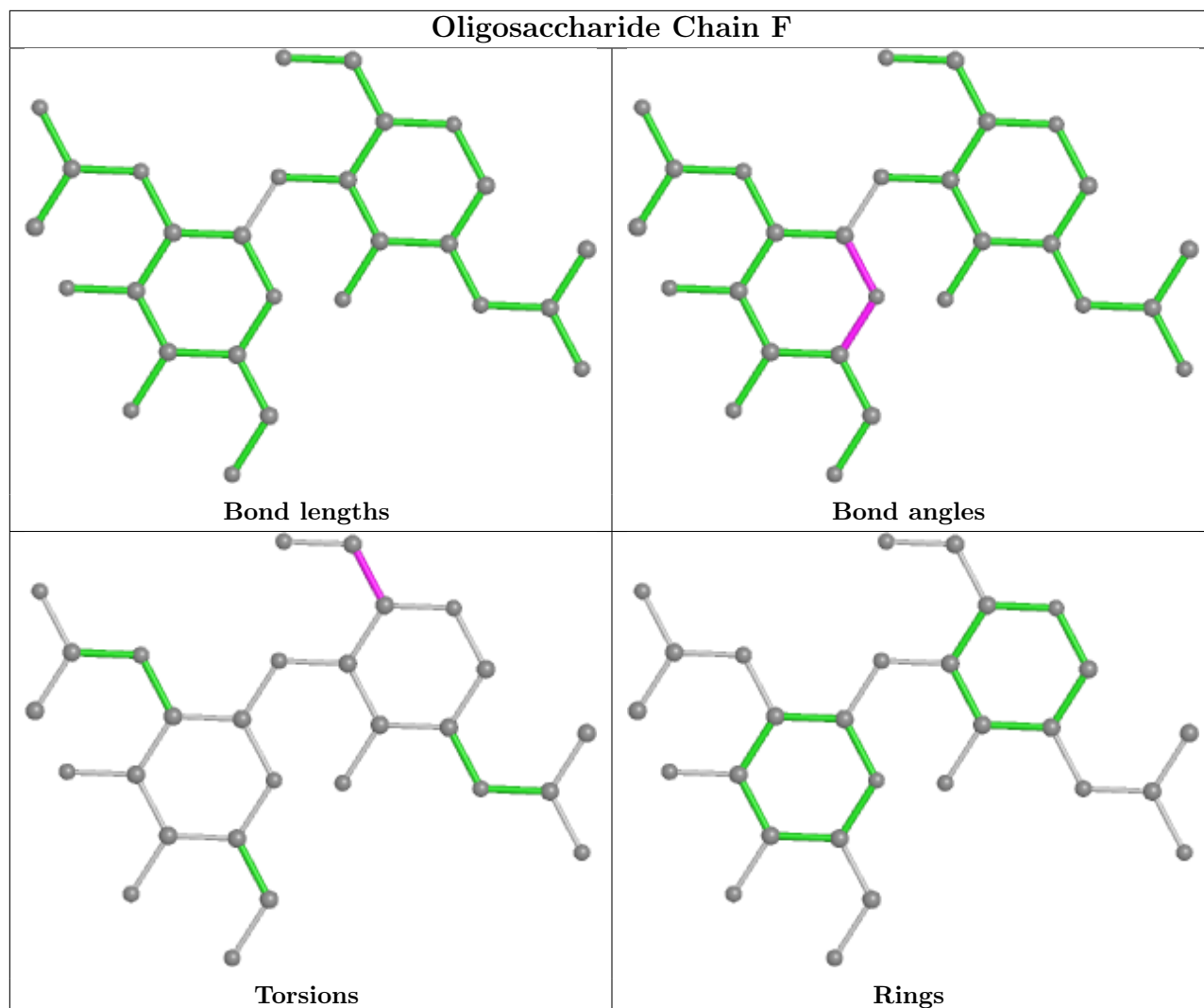
There are no ring outliers.

1 monomer is involved in 1 short contact:

Mol	Chain	Res	Type	Clashes	Symm-Clashes
3	F	2	NAG	1	0

The following is a two-dimensional graphical depiction of Mogul quality analysis of bond lengths, bond angles, torsion angles, and ring geometry for oligosaccharide.





## 5.6 Ligand geometry [i](#)

Of 6 ligands modelled in this entry, 4 are monoatomic - leaving 2 for Mogul analysis.

In the following table, the Counts columns list the number of bonds (or angles) for which Mogul statistics could be retrieved, the number of bonds (or angles) that are observed in the model and the number of bonds (or angles) that are defined in the Chemical Component Dictionary. The Link column lists molecule types, if any, to which the group is linked. The Z score for a bond length (or angle) is the number of standard deviations the observed value is removed from the expected value. A bond length (or angle) with  $|Z| > 2$  is considered an outlier worth inspection. RMSZ is the root-mean-square of all Z scores of the bond lengths (or angles).

Mol	Type	Chain	Res	Link	Bond lengths			Bond angles		
					Counts	RMSZ	$\# Z  > 2$	Counts	RMSZ	$\# Z  > 2$
4	ATP	D	901	2	26,33,33	0.71	0	31,52,52	0.86	2 (6%)
4	ATP	C	901	-	26,33,33	0.71	0	31,52,52	0.75	1 (3%)

In the following table, the Chirals column lists the number of chiral outliers, the number of chiral centers analysed, the number of these observed in the model and the number defined in the Chemical Component Dictionary. Similar counts are reported in the Torsion and Rings columns. '-' means no outliers of that kind were identified.

Mol	Type	Chain	Res	Link	Chirals	Torsions	Rings
4	ATP	D	901	2	-	3/18/38/38	0/3/3/3
4	ATP	C	901	-	-	3/18/38/38	0/3/3/3

There are no bond length outliers.

All (3) bond angle outliers are listed below:

Mol	Chain	Res	Type	Atoms	Z	Observed(°)	Ideal(°)
4	D	901	ATP	O4'-C1'-C2'	-2.39	103.43	106.93
4	C	901	ATP	C5-C6-N6	2.37	123.95	120.35
4	D	901	ATP	C5-C6-N6	2.22	123.73	120.35

There are no chirality outliers.

All (6) torsion outliers are listed below:

Mol	Chain	Res	Type	Atoms
4	C	901	ATP	PB-O3B-PG-O2G
4	C	901	ATP	C5'-O5'-PA-O2A
4	C	901	ATP	C5'-O5'-PA-O3A
4	D	901	ATP	C4'-C5'-O5'-PA
4	D	901	ATP	PA-O3A-PB-O1B
4	D	901	ATP	C5'-O5'-PA-O3A

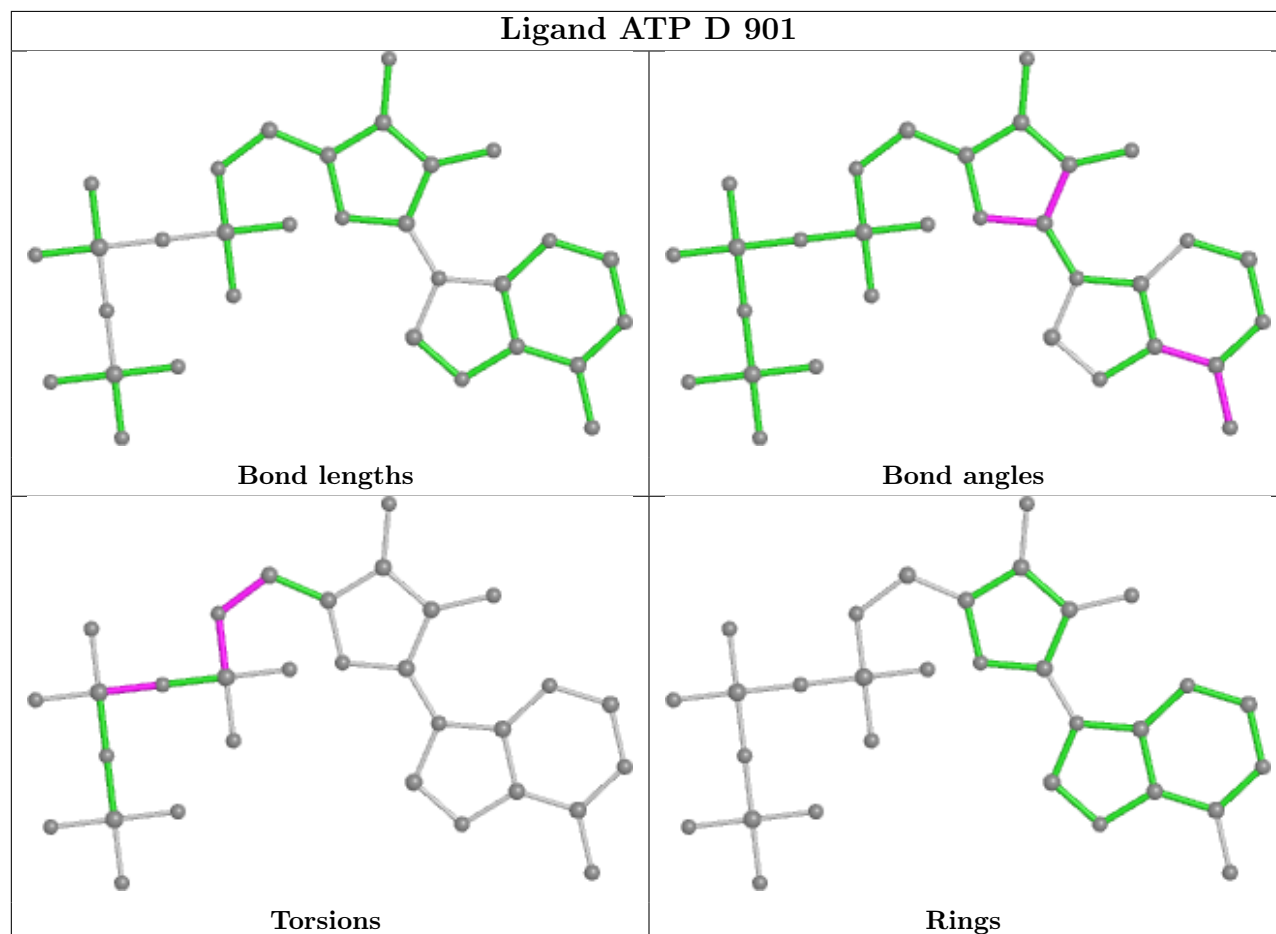
There are no ring outliers.

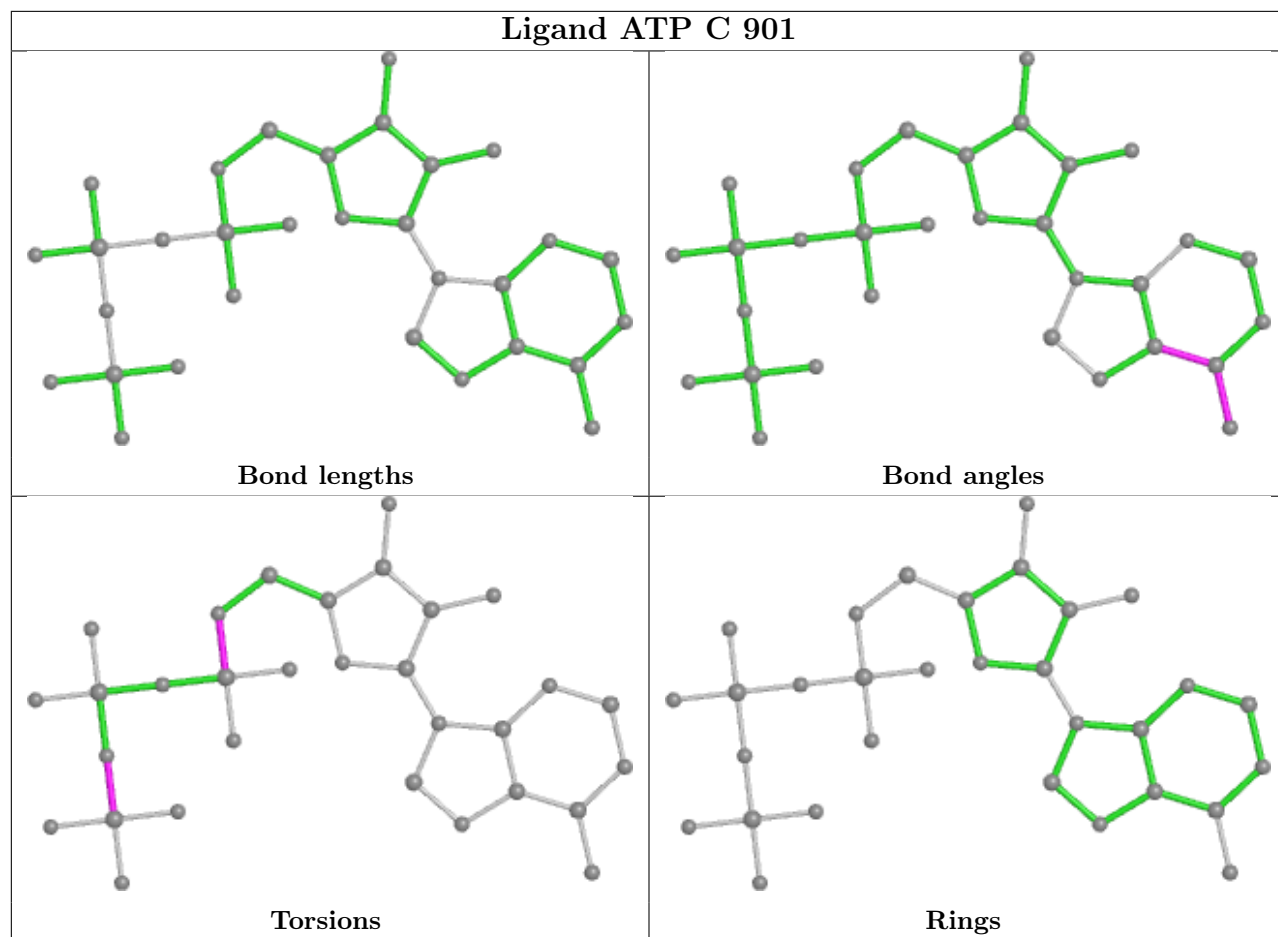
1 monomer is involved in 2 short contacts:

Mol	Chain	Res	Type	Clashes	Symm-Clashes
4	C	901	ATP	2	0

The following is a two-dimensional graphical depiction of Mogul quality analysis of bond lengths, bond angles, torsion angles, and ring geometry for all instances of the Ligand of Interest. In addition, ligands with molecular weight > 250 and outliers as shown on the validation Tables will also be included. For torsion angles, if less than 5% of the Mogul distribution of torsion angles is within 10 degrees of the torsion angle in question, then that torsion angle is considered an outlier. Any bond that is central to one or more torsion angles identified as an outlier by Mogul will be highlighted in the graph. For rings, the root-mean-square deviation (RMSD) between the ring in question and similar rings identified by Mogul is calculated over all ring torsion angles. If the average RMSD is greater than 60 degrees and the minimal RMSD between the ring in question and

any Mogul-identified rings is also greater than 60 degrees, then that ring is considered an outlier. The outliers are highlighted in purple. The color gray indicates Mogul did not find sufficient equivalents in the CSD to analyse the geometry.





## 5.7 Other polymers [i](#)

There are no such residues in this entry.

## 5.8 Polymer linkage issues [i](#)

There are no chain breaks in this entry.

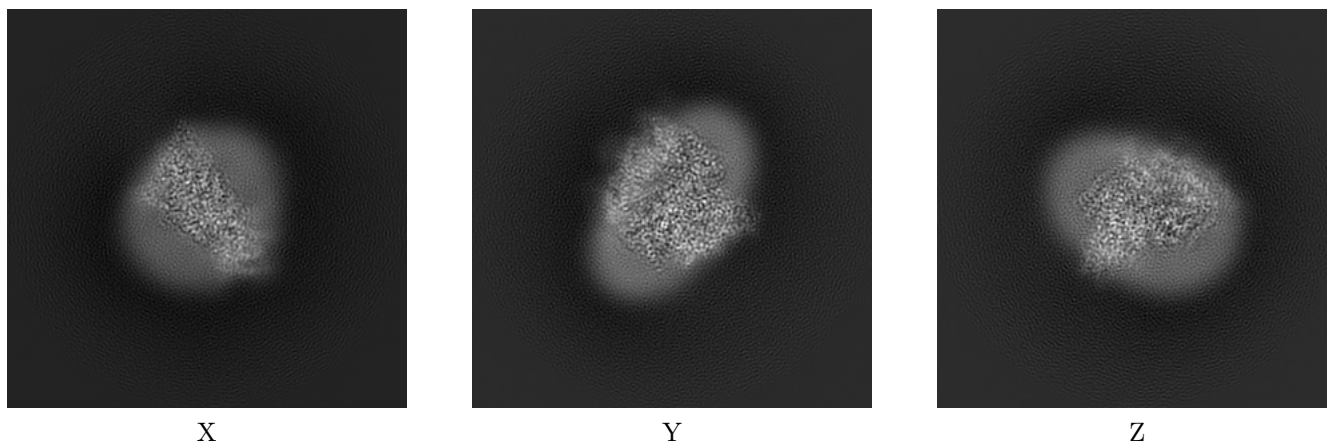
## 6 Map visualisation [i](#)

This section contains visualisations of the EMDB entry EMD-30436. These allow visual inspection of the internal detail of the map and identification of artifacts.

No raw map or half-maps were deposited for this entry and therefore no images, graphs, etc. pertaining to the raw map can be shown.

### 6.1 Orthogonal projections [i](#)

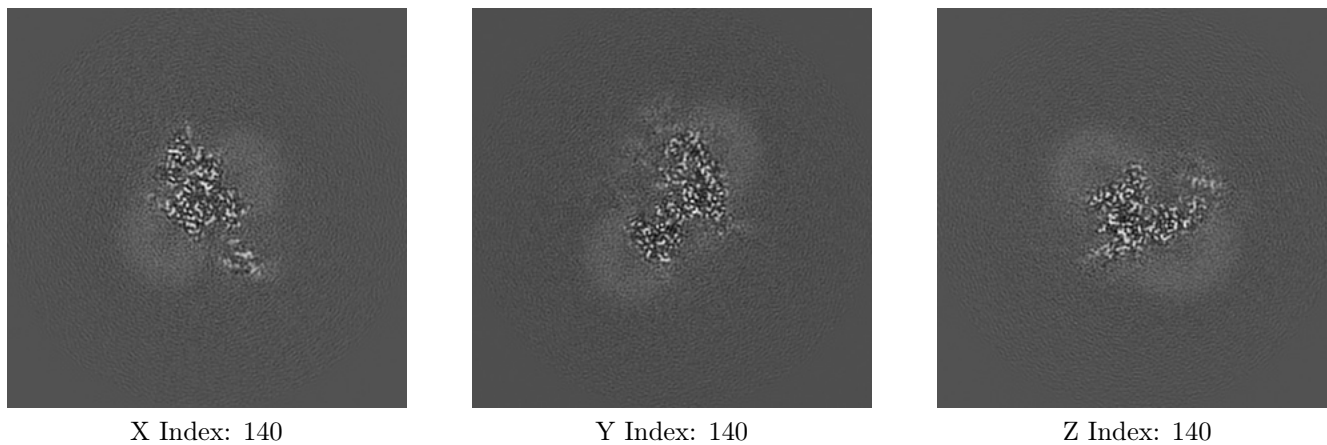
#### 6.1.1 Primary map



The images above show the map projected in three orthogonal directions.

### 6.2 Central slices [i](#)

#### 6.2.1 Primary map

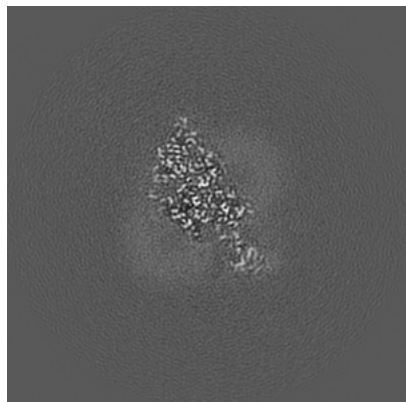




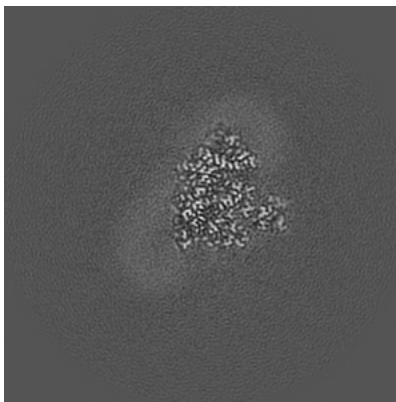
The images above show central slices of the map in three orthogonal directions.

## 6.3 Largest variance slices [i](#)

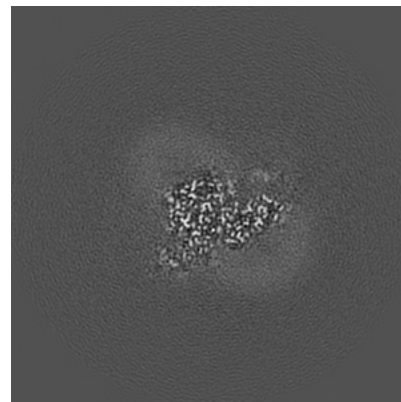
### 6.3.1 Primary map



X Index: 136



Y Index: 127



Z Index: 144

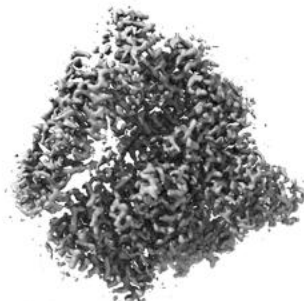
The images above show the largest variance slices of the map in three orthogonal directions.

## 6.4 Orthogonal surface views [i](#)

### 6.4.1 Primary map



X



Y



Z

The images above show the 3D surface view of the map at the recommended contour level 0.034. These images, in conjunction with the slice images, may facilitate assessment of whether an appropriate contour level has been provided.

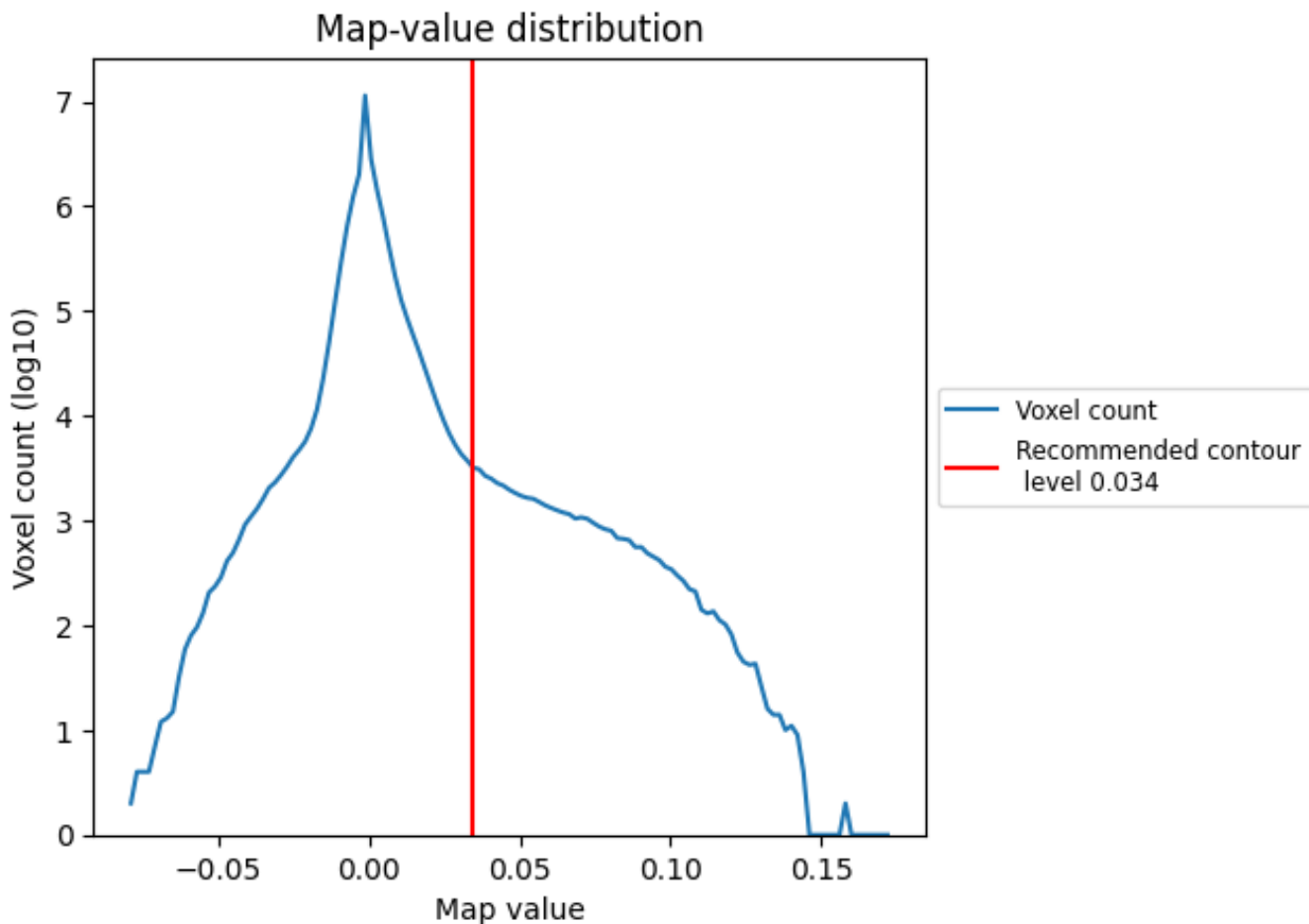
## 6.5 Mask visualisation

This section was not generated. No masks/segmentation were deposited.

## 7 Map analysis [i](#)

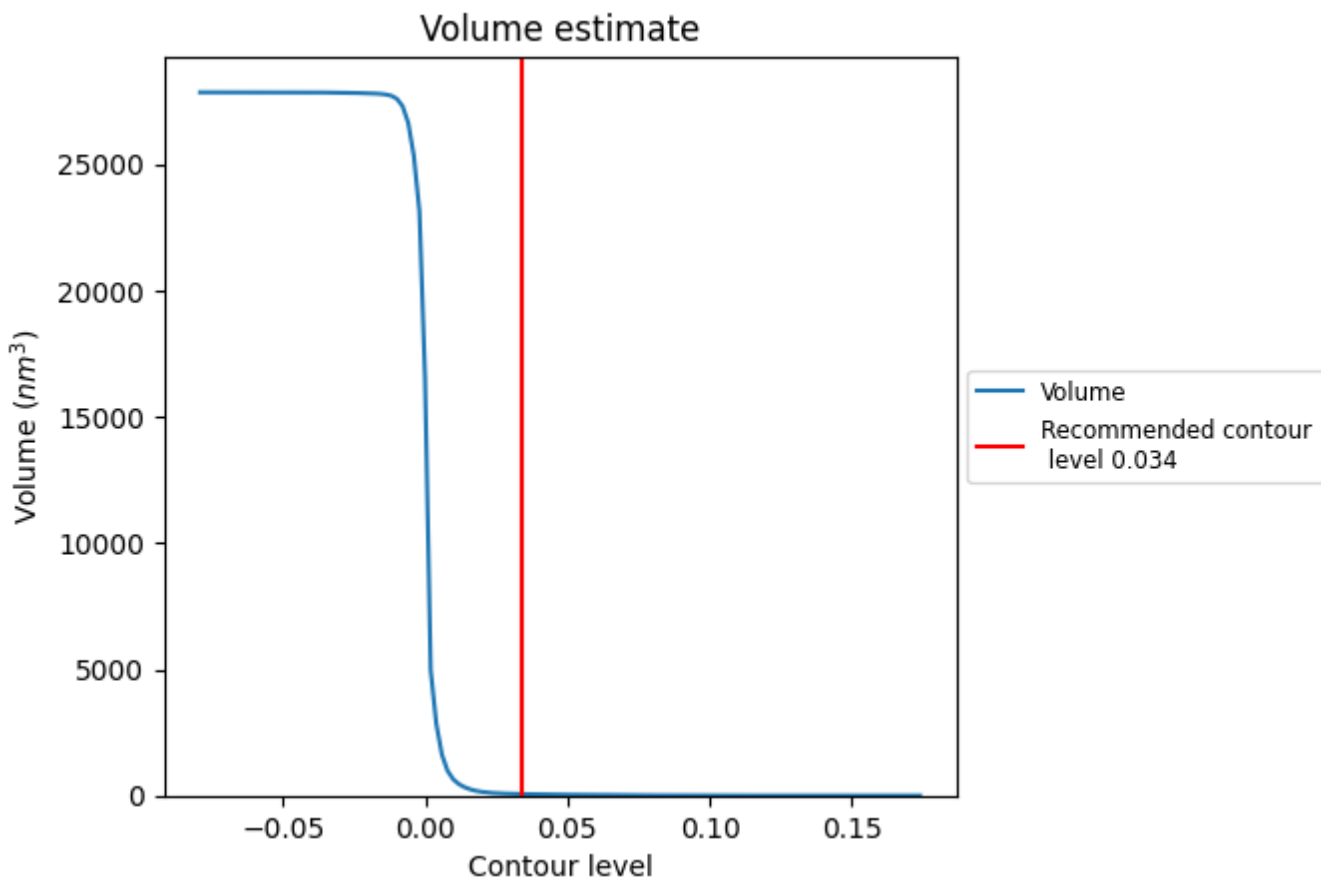
This section contains the results of statistical analysis of the map.

### 7.1 Map-value distribution [i](#)



The map-value distribution is plotted in 128 intervals along the x-axis. The y-axis is logarithmic. A spike in this graph at zero usually indicates that the volume has been masked.

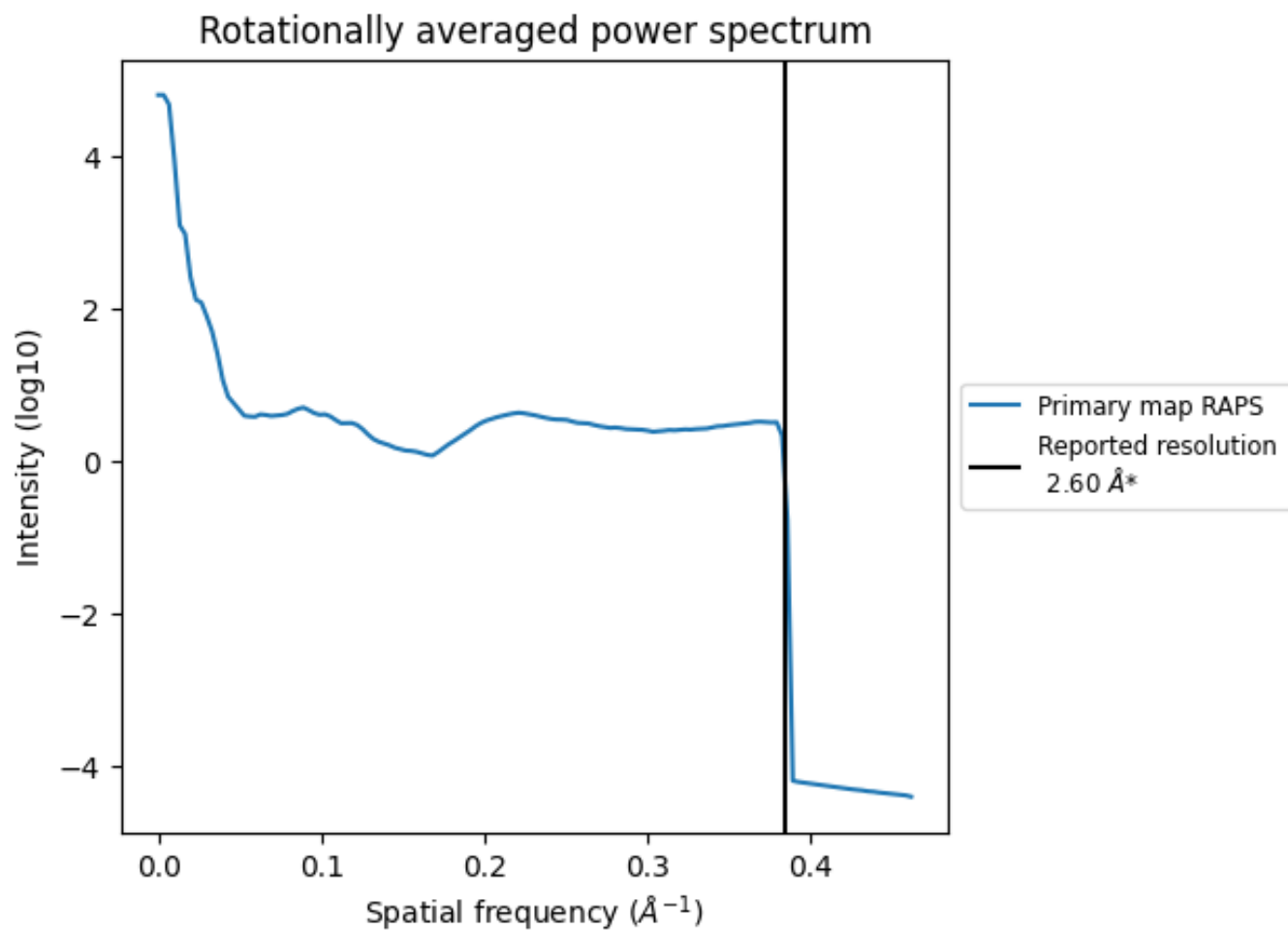
## 7.2 Volume estimate [i](#)



The volume at the recommended contour level is 60 nm<sup>3</sup>; this corresponds to an approximate mass of 54 kDa.

The volume estimate graph shows how the enclosed volume varies with the contour level. The recommended contour level is shown as a vertical line and the intersection between the line and the curve gives the volume of the enclosed surface at the given level.

### 7.3 Rotationally averaged power spectrum [i](#)



\*Reported resolution corresponds to spatial frequency of 0.385 Å<sup>-1</sup>

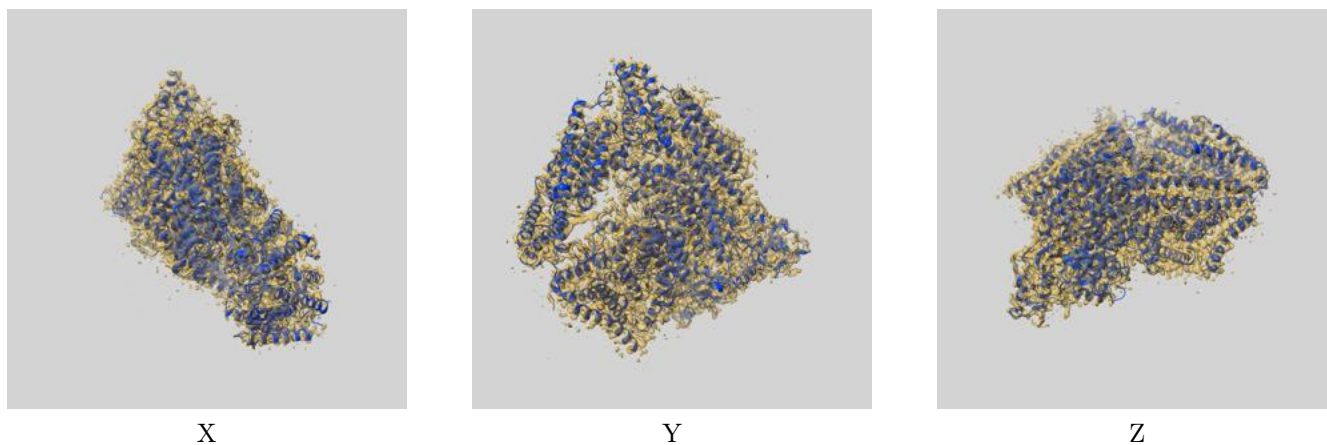
## 8 Fourier-Shell correlation

This section was not generated. No FSC curve or half-maps provided.

## 9 Map-model fit [i](#)

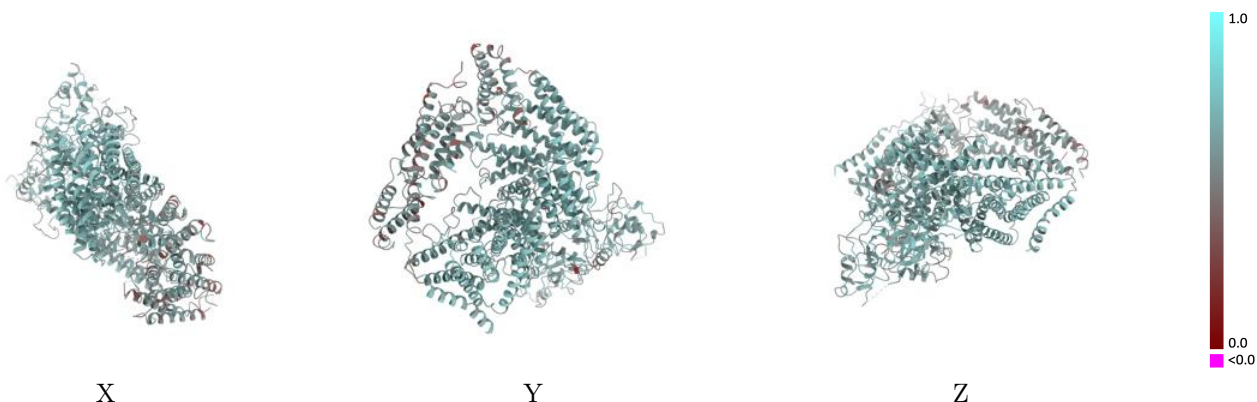
This section contains information regarding the fit between EMDB map EMD-30436 and PDB model 7CQ5. Per-residue inclusion information can be found in section 3 on page 8.

### 9.1 Map-model overlay [i](#)



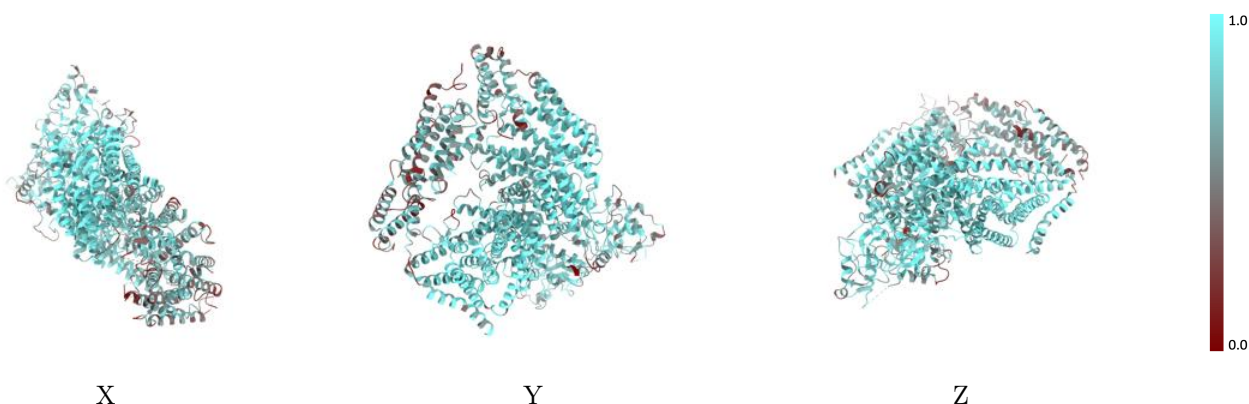
The images above show the 3D surface view of the map at the recommended contour level 0.034 at 50% transparency in yellow overlaid with a ribbon representation of the model coloured in blue. These images allow for the visual assessment of the quality of fit between the atomic model and the map.

## 9.2 Q-score mapped to coordinate model [\(i\)](#)



The images above show the model with each residue coloured according to its Q-score. This shows their resolvability in the map with higher Q-score values reflecting better resolvability. Please note: Q-score is calculating the resolvability of atoms, and thus high values are only expected at resolutions at which atoms can be resolved. Low Q-score values may therefore be expected for many entries.

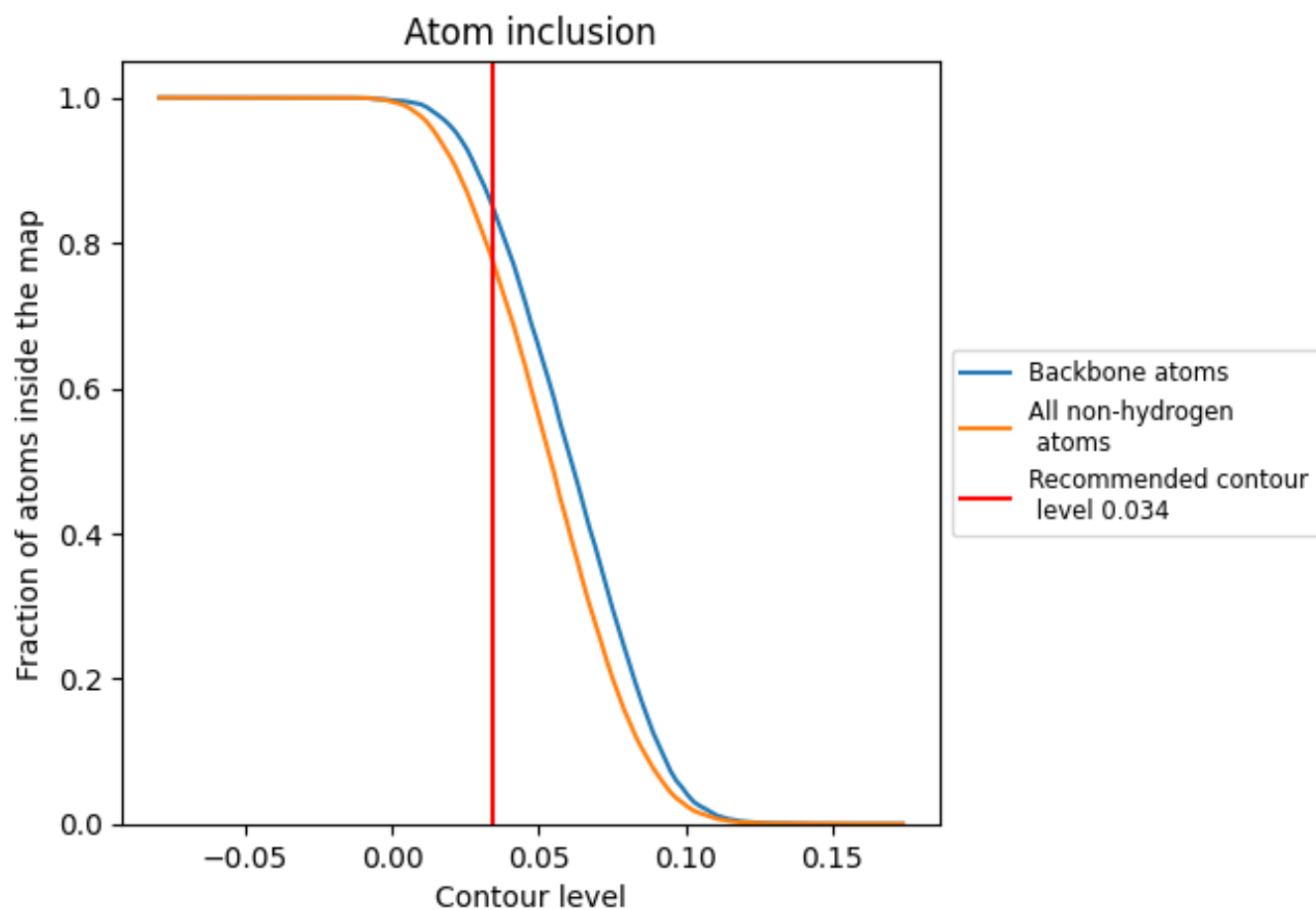
## 9.3 Atom inclusion mapped to coordinate model [\(i\)](#)



The images above show the model with each residue coloured according to its atom inclusion. This shows to what extent they are inside the map at the recommended contour level (0.034).

















## 9.4 Atom inclusion [i](#)



At the recommended contour level, 85% of all backbone atoms, 78% of all non-hydrogen atoms, are inside the map.

## 9.5 Map-model fit summary

The table lists the average atom inclusion at the recommended contour level (0.034) and Q-score for the entire model and for each chain.

Chain	Atom inclusion	Q-score
All	 0.7795	 0.6010
A	 0.6022	 0.5280
B	 0.5836	 0.5250
C	 0.8358	 0.6260
D	 0.8393	 0.6230
E	 0.6071	 0.5880
F	 0.7500	 0.6070

