



wwPDB X-ray Structure Validation Summary Report ⓘ

Nov 20, 2023 – 02:03 PM JST

PDB ID : 7CM0
Title : Crystal structure of a glutaminy cyclase in complex with NHV-1009
Authors : Lee, J.W.; Song, J.Y.; Jang, T.H.; Ha, J.H.
Deposited on : 2020-07-23
Resolution : 2.20 Å(reported)

This is a wwPDB X-ray Structure Validation Summary Report for a publicly released PDB entry.

We welcome your comments at validation@mail.wwpdb.org

A user guide is available at

<https://www.wwpdb.org/validation/2017/XrayValidationReportHelp>

with specific help available everywhere you see the ⓘ symbol.

The types of validation reports are described at

<http://www.wwpdb.org/validation/2017/FAQs#types>.

The following versions of software and data (see [references ⓘ](#)) were used in the production of this report:

MolProbity : 4.02b-467
Mogul : 1.8.5 (274361), CSD as541be (2020)
Xtriage (Phenix) : 1.13
EDS : 2.36
buster-report : 1.1.7 (2018)
Percentile statistics : 20191225.v01 (using entries in the PDB archive December 25th 2019)
Refmac : 5.8.0158
CCP4 : 7.0.044 (Gargrove)
Ideal geometry (proteins) : Engh & Huber (2001)
Ideal geometry (DNA, RNA) : Parkinson et al. (1996)
Validation Pipeline (wwPDB-VP) : 2.36

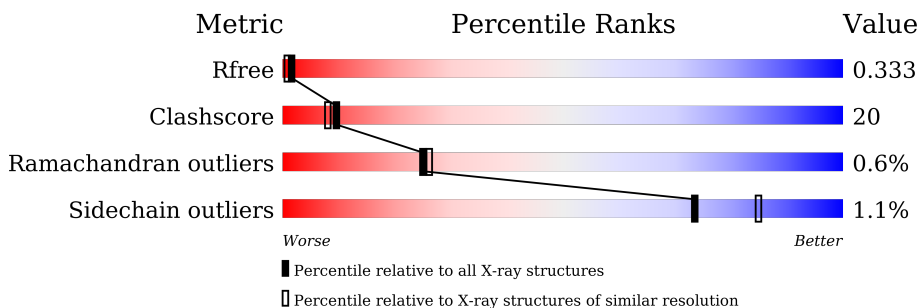
1 Overall quality at a glance

The following experimental techniques were used to determine the structure:

X-RAY DIFFRACTION

The reported resolution of this entry is 2.20 Å.

Percentile scores (ranging between 0-100) for global validation metrics of the entry are shown in the following graphic. The table shows the number of entries on which the scores are based.



Metric	Whole archive (#Entries)	Similar resolution (#Entries, resolution range(Å))
R_{free}	130704	4898 (2.20-2.20)
Clashscore	141614	5594 (2.20-2.20)
Ramachandran outliers	138981	5503 (2.20-2.20)
Sidechain outliers	138945	5504 (2.20-2.20)

The table below summarises the geometric issues observed across the polymeric chains and their fit to the electron density. The red, orange, yellow and green segments of the lower bar indicate the fraction of residues that contain outliers for ≥ 3 , 2, 1 and 0 types of geometric quality criteria respectively. A grey segment represents the fraction of residues that are not modelled. The numeric value for each fraction is indicated below the corresponding segment, with a dot representing fractions $\leq 5\%$.

Mol	Chain	Length	Quality of chain
1	A	327	63% (green), 34% (yellow), .. (grey)
1	B	327	65% (green), 32% (yellow), .. (grey)
1	C	327	59% (green), 38% (yellow), .. (grey)
1	D	327	67% (green), 30% (yellow), .. (grey)

2 Entry composition [i](#)

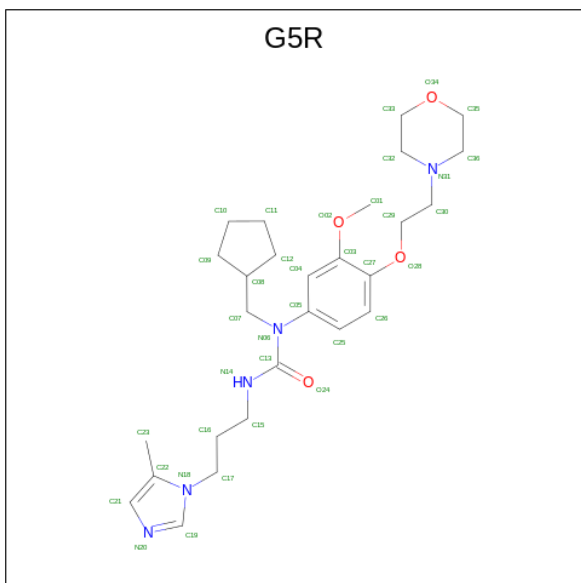
There are 4 unique types of molecules in this entry. The entry contains 10546 atoms, of which 0 are hydrogens and 0 are deuteriums.

In the tables below, the ZeroOcc column contains the number of atoms modelled with zero occupancy, the AltConf column contains the number of residues with at least one atom in alternate conformation and the Trace column contains the number of residues modelled with at most 2 atoms.

- Molecule 1 is a protein called Glutaminyl-peptide cyclotransferase.

Mol	Chain	Residues	Atoms					ZeroOcc	AltConf	Trace
			Total	C	N	O	S			
1	A	321	Total 2560	C 1643	N 436	O 472	S 9	0	1	0
1	B	321	Total 2562	C 1644	N 436	O 473	S 9	0	1	0
1	C	321	Total 2560	C 1643	N 436	O 472	S 9	0	1	0
1	D	321	Total 2560	C 1643	N 436	O 472	S 9	0	1	0

- Molecule 2 is 1-(cyclopentylmethyl)-1-[3-methoxy-4-(2-morpholin-4-ylethoxy)phenyl]-3-[3-(5-methylimidazol-1-yl)propyl]urea (three-letter code: G5R) (formula: C₂₇H₄₁N₅O₄) (labeled as "Ligand of Interest" by depositor).



Mol	Chain	Residues	Atoms				ZeroOcc	AltConf
			Total	C	N	O		
2	A	1	Total 36	C 27	N 5	O 4	0	0

Continued on next page...

Continued from previous page...

Mol	Chain	Residues	Atoms				ZeroOcc	AltConf
2	B	1	Total	C	N	O	0	0
			36	27	5	4		
2	C	1	Total	C	N	O	0	0
			36	27	5	4		
2	D	1	Total	C	N	O	0	0
			36	27	5	4		

- Molecule 3 is ZINC ION (three-letter code: ZN) (formula: Zn).

Mol	Chain	Residues	Atoms		ZeroOcc	AltConf
3	A	1	Total	Zn	0	0
			1	1		
3	B	1	Total	Zn	0	0
			1	1		
3	C	1	Total	Zn	0	0
			1	1		
3	D	1	Total	Zn	0	0
			1	1		

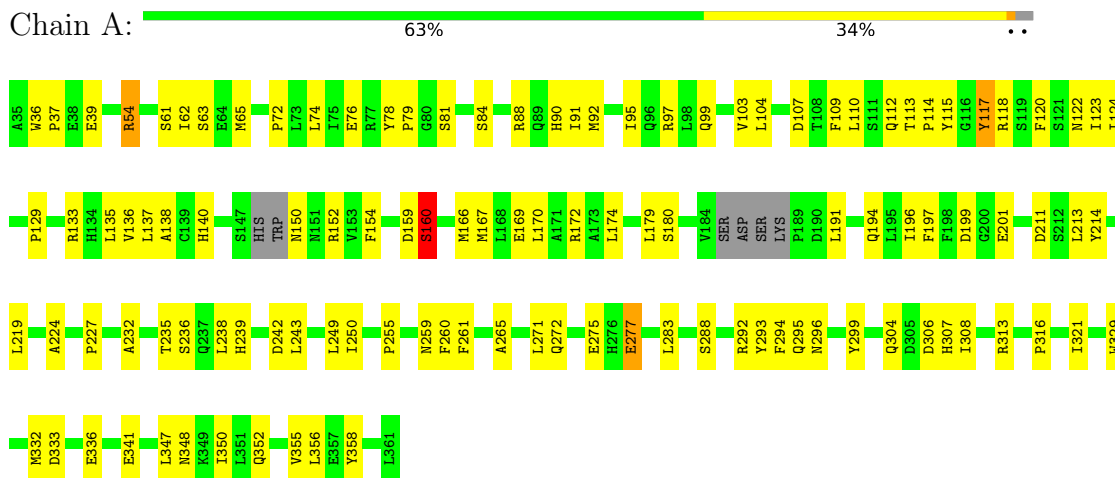
- Molecule 4 is water.

Mol	Chain	Residues	Atoms		ZeroOcc	AltConf
4	A	34	Total	O	0	0
			34	34		
4	B	32	Total	O	0	0
			32	32		
4	C	44	Total	O	0	0
			44	44		
4	D	46	Total	O	0	0
			46	46		

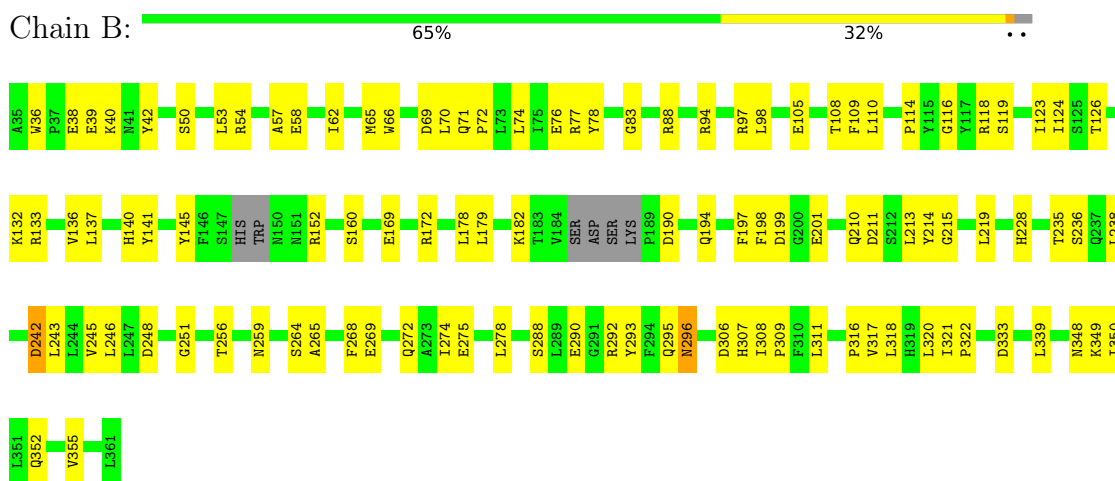
3 Residue-property plots

These plots are drawn for all protein, RNA, DNA and oligosaccharide chains in the entry. The first graphic for a chain summarises the proportions of the various outlier classes displayed in the second graphic. The second graphic shows the sequence view annotated by issues in geometry. Residues are color-coded according to the number of geometric quality criteria for which they contain at least one outlier: green = 0, yellow = 1, orange = 2 and red = 3 or more. Stretches of 2 or more consecutive residues without any outlier are shown as a green connector. Residues present in the sample, but not in the model, are shown in grey.

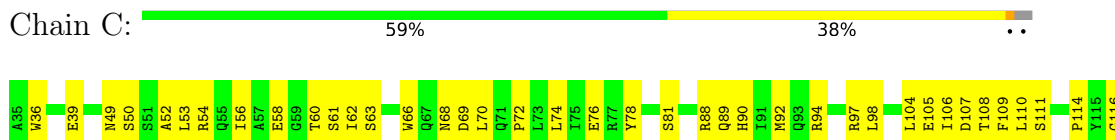
- Molecule 1: Glutaminyl-peptide cyclotransferase

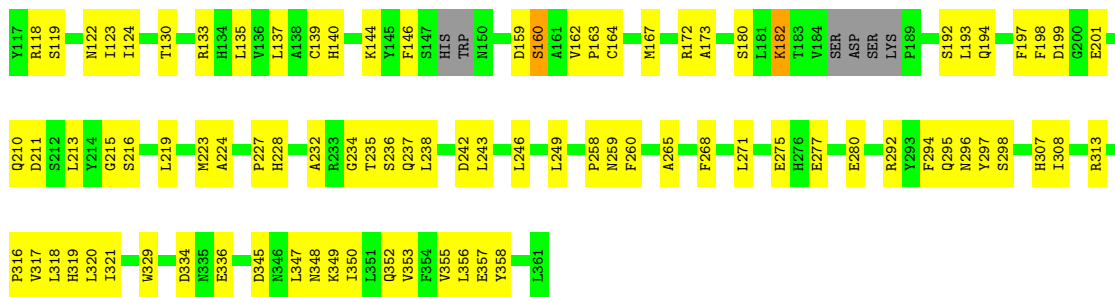


- Molecule 1: Glutaminyl-peptide cyclotransferase



- Molecule 1: Glutaminyl-peptide cyclotransferase





● Molecule 1: Glutaminyl-peptide cyclotransferase



4 Data and refinement statistics i

Property	Value	Source
Space group	P 3	Depositor
Cell constants a, b, c, α , β , γ	116.90Å 116.90Å 99.46Å 90.00° 90.00° 120.00°	Depositor
Resolution (Å)	33.74 – 2.20 35.47 – 2.20	Depositor EDS
% Data completeness (in resolution range)	97.0 (33.74-2.20) 97.0 (35.47-2.20)	Depositor EDS
R_{merge}	(Not available)	Depositor
R_{sym}	(Not available)	Depositor
$\langle I/\sigma(I) \rangle$ ¹	3.45 (at 2.20Å)	Xtrriage
Refinement program	PHENIX (1.13_2998)	Depositor
R, R_{free}	0.290 , 0.335 0.290 , 0.333	Depositor DCC
R_{free} test set	3811 reflections (5.09%)	wwPDB-VP
Wilson B-factor (Å ²)	34.5	Xtrriage
Anisotropy	0.760	Xtrriage
Bulk solvent k_{sol} (e/Å ³), B_{sol} (Å ²)	0.29 , 21.5	EDS
L-test for twinning ²	$\langle L \rangle = 0.38$, $\langle L^2 \rangle = 0.21$	Xtrriage
Estimated twinning fraction	0.476 for -h,-k,l 0.477 for h,-h-k,-l 0.477 for -k,-h,-l	Xtrriage
F_o, F_c correlation	0.96	EDS
Total number of atoms	10546	wwPDB-VP
Average B, all atoms (Å ²)	44.0	wwPDB-VP

Xtrriage's analysis on translational NCS is as follows: *The largest off-origin peak in the Patterson function is 2.77% of the height of the origin peak. No significant pseudotranslation is detected.*

¹Intensities estimated from amplitudes.

²Theoretical values of $\langle |L| \rangle$, $\langle L^2 \rangle$ for acentric reflections are 0.5, 0.333 respectively for untwinned datasets, and 0.375, 0.2 for perfectly twinned datasets.

5 Model quality [i](#)

5.1 Standard geometry [i](#)

Bond lengths and bond angles in the following residue types are not validated in this section: G5R, ZN

The Z score for a bond length (or angle) is the number of standard deviations the observed value is removed from the expected value. A bond length (or angle) with $|Z| > 5$ is considered an outlier worth inspection. RMSZ is the root-mean-square of all Z scores of the bond lengths (or angles).

Mol	Chain	Bond lengths		Bond angles	
		RMSZ	# Z >5	RMSZ	# Z >5
1	A	0.47	0/2635	0.67	3/3587 (0.1%)
1	B	0.49	2/2637 (0.1%)	0.62	1/3590 (0.0%)
1	C	0.47	0/2635	0.62	1/3587 (0.0%)
1	D	0.44	0/2635	0.63	1/3587 (0.0%)
All	All	0.47	2/10542 (0.0%)	0.64	6/14351 (0.0%)

Chiral center outliers are detected by calculating the chiral volume of a chiral center and verifying if the center is modelled as a planar moiety or with the opposite hand. A planarity outlier is detected by checking planarity of atoms in a peptide group, atoms in a mainchain group or atoms of a sidechain that are expected to be planar.

Mol	Chain	#Chirality outliers	#Planarity outliers
1	A	0	1

All (2) bond length outliers are listed below:

Mol	Chain	Res	Type	Atoms	Z	Observed(Å)	Ideal(Å)
1	B	38	GLU	CB-CG	6.80	1.65	1.52
1	B	38	GLU	CD-OE1	5.47	1.31	1.25

The worst 5 of 6 bond angle outliers are listed below:

Mol	Chain	Res	Type	Atoms	Z	Observed(°)	Ideal(°)
1	A	54	ARG	NE-CZ-NH2	-12.96	113.82	120.30
1	D	74	LEU	CB-CG-CD2	6.36	121.81	111.00
1	A	277	GLU	OE1-CD-OE2	-5.69	116.47	123.30
1	A	54	ARG	NH1-CZ-NH2	5.50	125.45	119.40
1	C	298	SER	CB-CA-C	5.15	119.89	110.10

There are no chirality outliers.

All (1) planarity outliers are listed below:

Mol	Chain	Res	Type	Group
1	A	277	GLU	Sidechain

5.2 Too-close contacts [i](#)

In the following table, the Non-H and H(model) columns list the number of non-hydrogen atoms and hydrogen atoms in the chain respectively. The H(added) column lists the number of hydrogen atoms added and optimized by MolProbity. The Clashes column lists the number of clashes within the asymmetric unit, whereas Symm-Clashes lists symmetry-related clashes.

Mol	Chain	Non-H	H(model)	H(added)	Clashes	Symm-Clashes
1	A	2560	0	2466	89	0
1	B	2562	0	2467	91	0
1	C	2560	0	2466	129	0
1	D	2560	0	2468	94	0
2	A	36	0	0	0	0
2	B	36	0	0	0	0
2	C	36	0	0	0	0
2	D	36	0	0	2	0
3	A	1	0	0	0	0
3	B	1	0	0	0	0
3	C	1	0	0	0	0
3	D	1	0	0	0	0
4	A	34	0	0	21	0
4	B	32	0	0	17	0
4	C	44	0	0	34	0
4	D	46	0	0	25	0
All	All	10546	0	9867	395	0

The all-atom clashscore is defined as the number of clashes found per 1000 atoms (including hydrogen atoms). The all-atom clashscore for this structure is 20.

The worst 5 of 395 close contacts within the same asymmetric unit are listed below, sorted by their clash magnitude.

Atom-1	Atom-2	Interatomic distance (Å)	Clash overlap (Å)
1:C:92:MET:HG3	4:C:505:HOH:O	1.58	1.00
1:A:124:ILE:HD11	1:A:219:LEU:HD21	1.44	0.98
1:D:105:GLU:OE1	4:D:501:HOH:O	1.83	0.96
1:D:279:HIS:CE1	4:D:502:HOH:O	2.17	0.96
1:C:105:GLU:OE2	4:C:501:HOH:O	1.84	0.94

There are no symmetry-related clashes.

5.3 Torsion angles [i](#)

5.3.1 Protein backbone [i](#)

In the following table, the Percentiles column shows the percent Ramachandran outliers of the chain as a percentile score with respect to all X-ray entries followed by that with respect to entries of similar resolution.

The Analysed column shows the number of residues for which the backbone conformation was analysed, and the total number of residues.

Mol	Chain	Analysed	Favoured	Allowed	Outliers	Percentiles	
1	A	316/327 (97%)	304 (96%)	9 (3%)	3 (1%)	17	16
1	B	316/327 (97%)	301 (95%)	15 (5%)	0	100	100
1	C	316/327 (97%)	300 (95%)	14 (4%)	2 (1%)	25	26
1	D	316/327 (97%)	303 (96%)	11 (4%)	2 (1%)	25	26
All	All	1264/1308 (97%)	1208 (96%)	49 (4%)	7 (1%)	25	26

5 of 7 Ramachandran outliers are listed below:

Mol	Chain	Res	Type
1	A	117	TYR
1	A	213	LEU
1	A	160	SER
1	C	160	SER
1	D	160	SER

5.3.2 Protein sidechains [i](#)

In the following table, the Percentiles column shows the percent sidechain outliers of the chain as a percentile score with respect to all X-ray entries followed by that with respect to entries of similar resolution.

The Analysed column shows the number of residues for which the sidechain conformation was analysed, and the total number of residues.

Mol	Chain	Analysed	Rotameric	Outliers	Percentiles	
1	A	276/289 (96%)	273 (99%)	3 (1%)	73	85
1	B	276/289 (96%)	272 (99%)	4 (1%)	67	80
1	C	276/289 (96%)	274 (99%)	2 (1%)	84	91

Continued on next page...

Continued from previous page...

Mol	Chain	Analysed	Rotameric	Outliers	Percentiles	
1	D	276/289 (96%)	273 (99%)	3 (1%)	73	85
All	All	1104/1156 (96%)	1092 (99%)	12 (1%)	73	85

5 of 12 residues with a non-rotameric sidechain are listed below:

Mol	Chain	Res	Type
1	C	180	SER
1	C	182	LYS
1	D	288	SER
1	D	159	ASP
1	B	179	LEU

Sometimes sidechains can be flipped to improve hydrogen bonding and reduce clashes. All (5) such sidechains are listed below:

Mol	Chain	Res	Type
1	A	259	ASN
1	B	259	ASN
1	C	259	ASN
1	C	352	GLN
1	D	259	ASN

5.3.3 RNA [i](#)

There are no RNA molecules in this entry.

5.4 Non-standard residues in protein, DNA, RNA chains [i](#)

There are no non-standard protein/DNA/RNA residues in this entry.

5.5 Carbohydrates [i](#)

There are no monosaccharides in this entry.

5.6 Ligand geometry [i](#)

Of 8 ligands modelled in this entry, 4 are monoatomic - leaving 4 for Mogul analysis.

In the following table, the Counts columns list the number of bonds (or angles) for which Mogul statistics could be retrieved, the number of bonds (or angles) that are observed in the model and

the number of bonds (or angles) that are defined in the Chemical Component Dictionary. The Link column lists molecule types, if any, to which the group is linked. The Z score for a bond length (or angle) is the number of standard deviations the observed value is removed from the expected value. A bond length (or angle) with $|Z| > 2$ is considered an outlier worth inspection. RMSZ is the root-mean-square of all Z scores of the bond lengths (or angles).

Mol	Type	Chain	Res	Link	Bond lengths			Bond angles		
					Counts	RMSZ	# Z > 2	Counts	RMSZ	# Z > 2
2	G5R	D	401	3	36,39,39	3.04	18 (50%)	44,51,51	1.75	9 (20%)
2	G5R	C	401	3	36,39,39	3.04	14 (38%)	44,51,51	1.66	11 (25%)
2	G5R	B	401	3	36,39,39	3.07	15 (41%)	44,51,51	2.17	11 (25%)
2	G5R	A	701	3	36,39,39	3.02	15 (41%)	44,51,51	1.52	7 (15%)

In the following table, the Chirals column lists the number of chiral outliers, the number of chiral centers analysed, the number of these observed in the model and the number defined in the Chemical Component Dictionary. Similar counts are reported in the Torsion and Rings columns. '-' means no outliers of that kind were identified.

Mol	Type	Chain	Res	Link	Chirals	Torsions	Rings
2	G5R	D	401	3	-	7/27/42/42	0/4/4/4
2	G5R	C	401	3	-	7/27/42/42	0/4/4/4
2	G5R	B	401	3	-	7/27/42/42	0/4/4/4
2	G5R	A	701	3	-	9/27/42/42	0/4/4/4

The worst 5 of 62 bond length outliers are listed below:

Mol	Chain	Res	Type	Atoms	Z	Observed(Å)	Ideal(Å)
2	B	401	G5R	O02-C03	9.22	1.51	1.37
2	A	701	G5R	O02-C03	9.11	1.51	1.37
2	C	401	G5R	O02-C03	9.05	1.51	1.37
2	A	701	G5R	C30-N31	-8.94	1.26	1.47
2	D	401	G5R	O02-C03	8.89	1.51	1.37

The worst 5 of 38 bond angle outliers are listed below:

Mol	Chain	Res	Type	Atoms	Z	Observed(°)	Ideal(°)
2	B	401	G5R	C15-N14-C13	7.73	128.03	120.84
2	B	401	G5R	N14-C13-N06	7.43	127.91	115.42
2	D	401	G5R	C07-N06-C13	4.95	123.07	115.60
2	D	401	G5R	O02-C03-C27	4.55	121.75	115.41
2	C	401	G5R	O02-C03-C27	4.16	121.20	115.41

There are no chirality outliers.

5 of 30 torsion outliers are listed below:

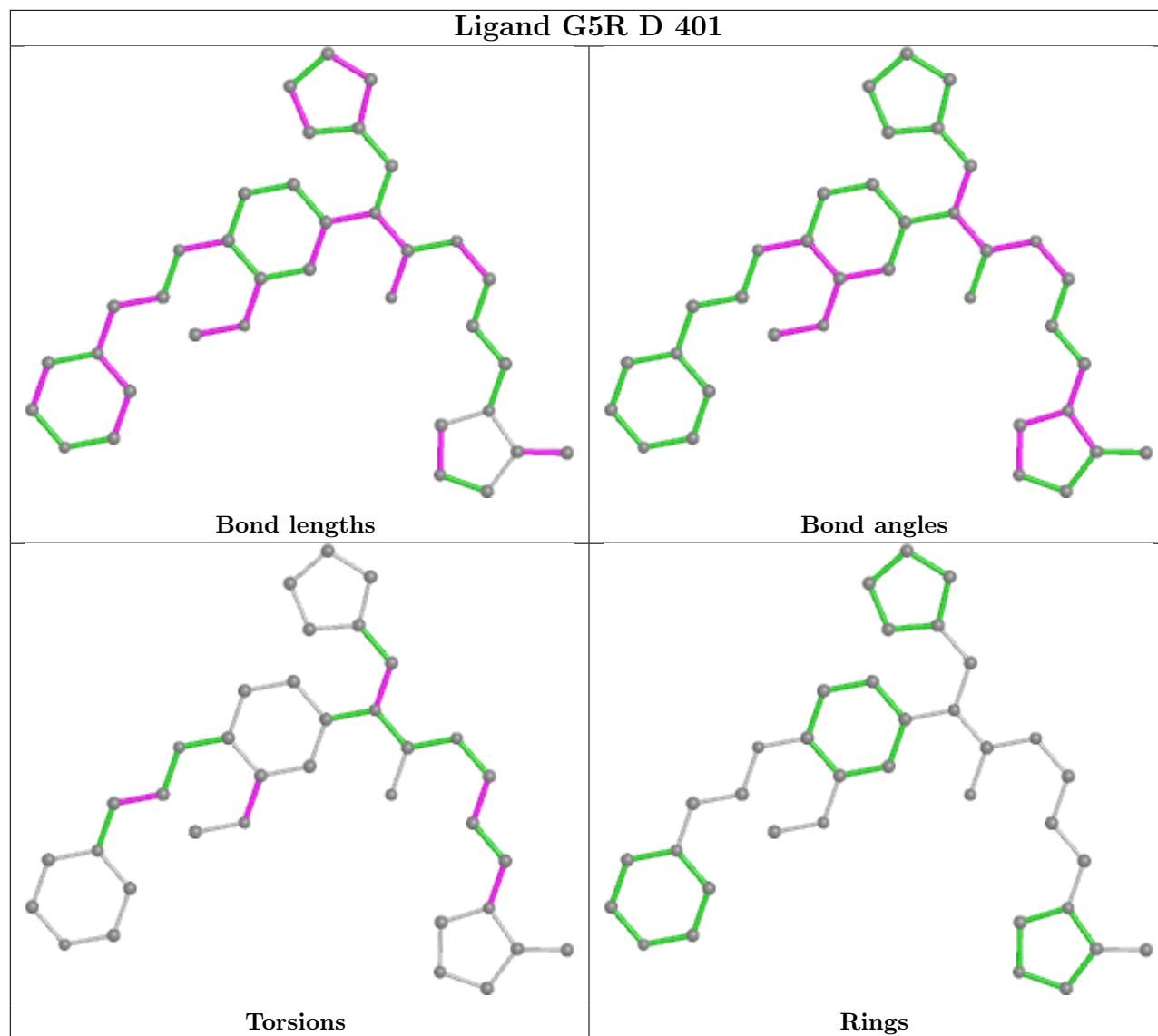
Mol	Chain	Res	Type	Atoms
2	A	701	G5R	N06-C07-C08-C09
2	A	701	G5R	N06-C07-C08-C12
2	A	701	G5R	C16-C17-N18-C19
2	A	701	G5R	C16-C17-N18-C22
2	B	401	G5R	N06-C13-N14-C15

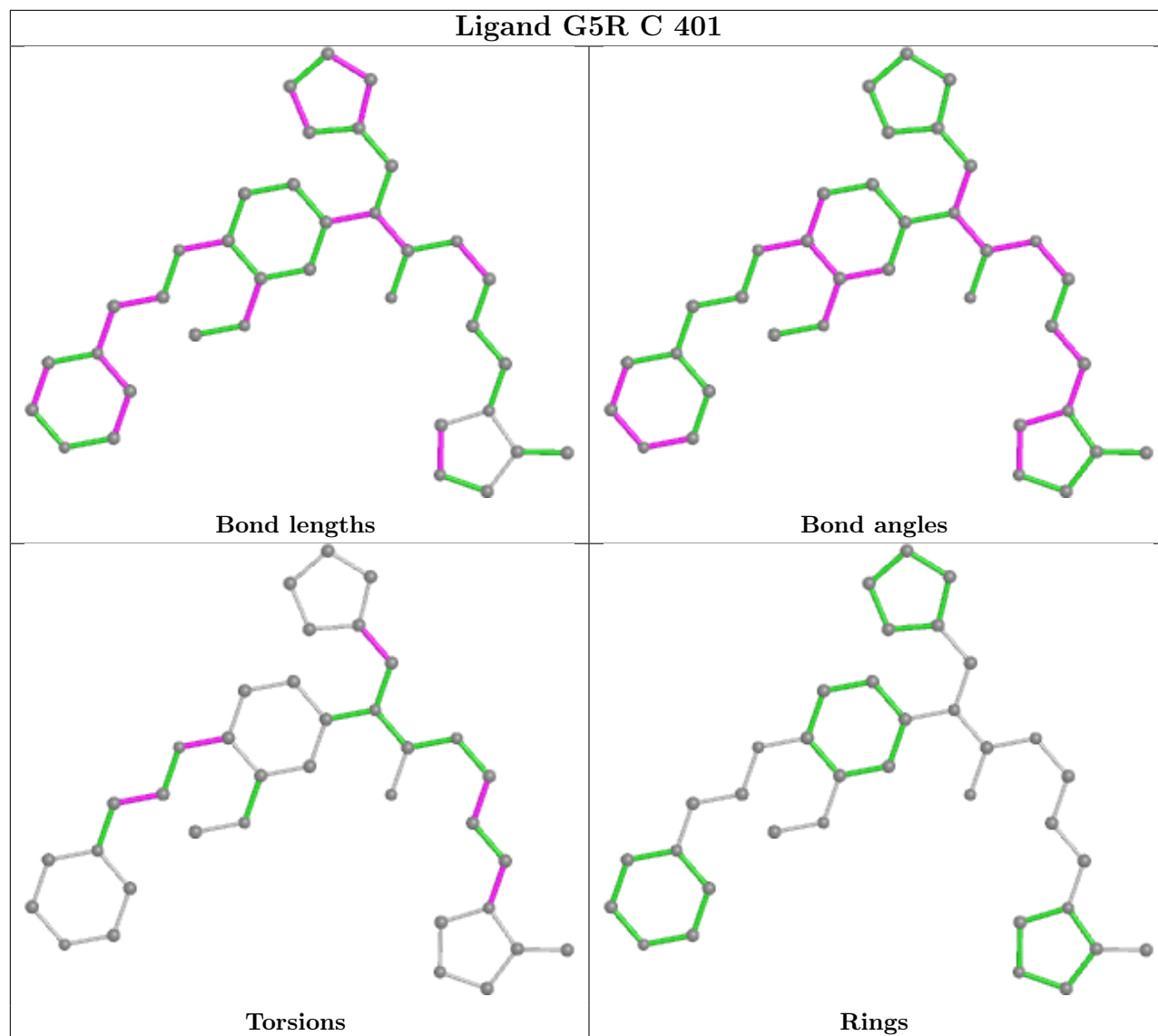
There are no ring outliers.

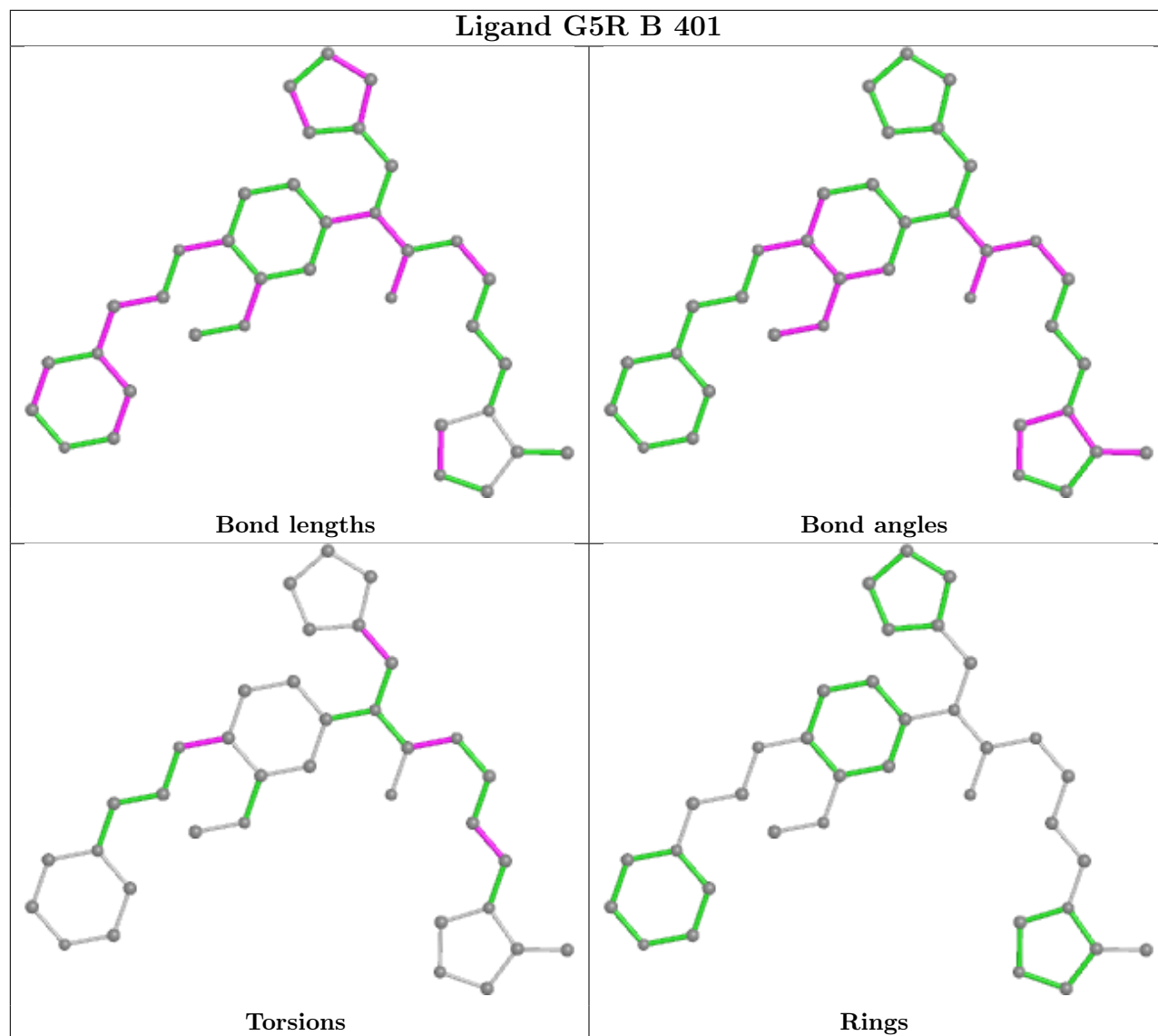
1 monomer is involved in 2 short contacts:

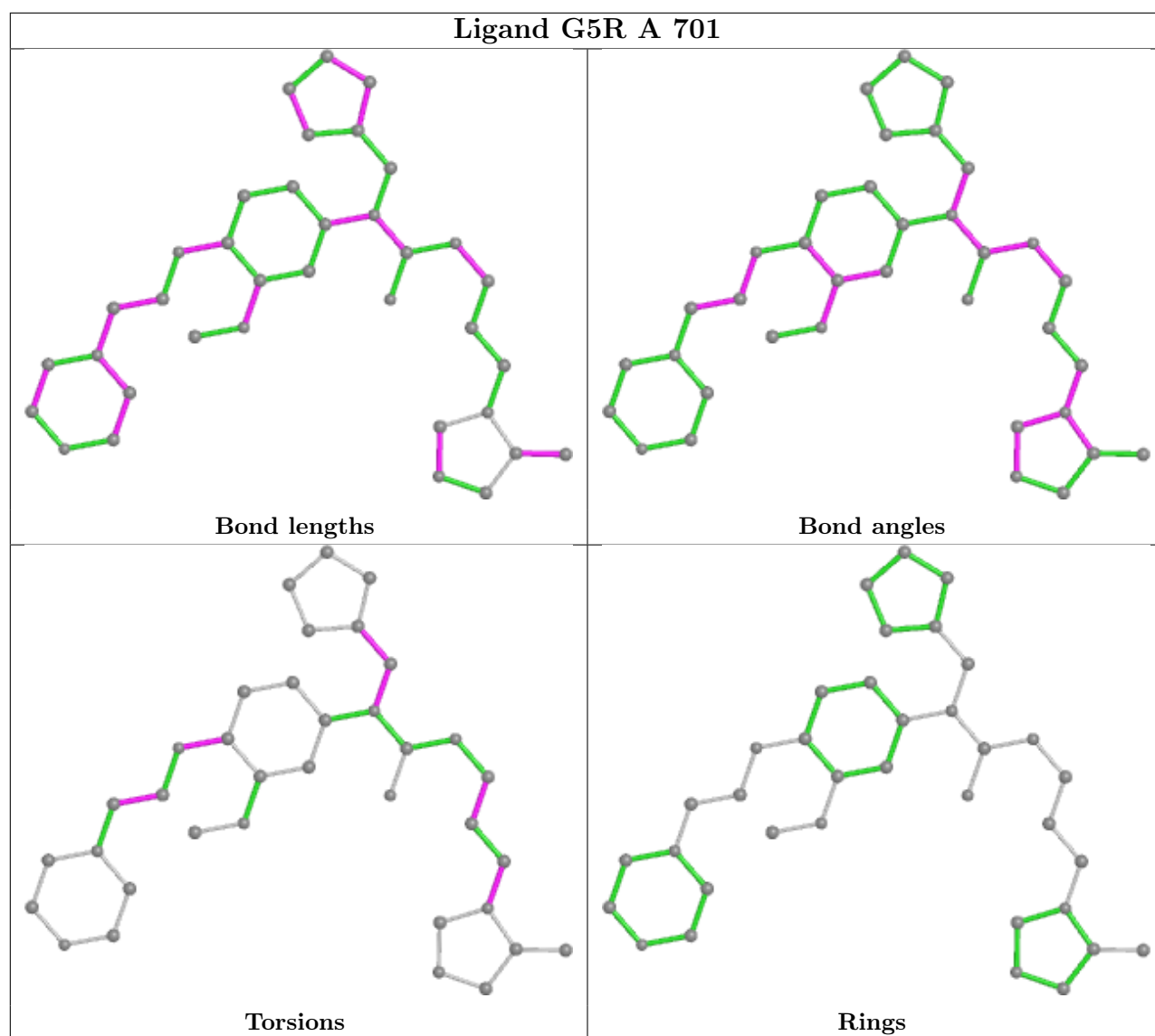
Mol	Chain	Res	Type	Clashes	Symm-Clashes
2	D	401	G5R	2	0

The following is a two-dimensional graphical depiction of Mogul quality analysis of bond lengths, bond angles, torsion angles, and ring geometry for all instances of the Ligand of Interest. In addition, ligands with molecular weight > 250 and outliers as shown on the validation Tables will also be included. For torsion angles, if less than 5% of the Mogul distribution of torsion angles is within 10 degrees of the torsion angle in question, then that torsion angle is considered an outlier. Any bond that is central to one or more torsion angles identified as an outlier by Mogul will be highlighted in the graph. For rings, the root-mean-square deviation (RMSD) between the ring in question and similar rings identified by Mogul is calculated over all ring torsion angles. If the average RMSD is greater than 60 degrees and the minimal RMSD between the ring in question and any Mogul-identified rings is also greater than 60 degrees, then that ring is considered an outlier. The outliers are highlighted in purple. The color gray indicates Mogul did not find sufficient equivalents in the CSD to analyse the geometry.









5.7 Other polymers [\(i\)](#)

There are no such residues in this entry.

5.8 Polymer linkage issues [\(i\)](#)

There are no chain breaks in this entry.

6 Fit of model and data

6.1 Protein, DNA and RNA chains

Unable to reproduce the depositors R factor - this section is therefore empty.

6.2 Non-standard residues in protein, DNA, RNA chains

Unable to reproduce the depositors R factor - this section is therefore empty.

6.3 Carbohydrates

Unable to reproduce the depositors R factor - this section is therefore empty.

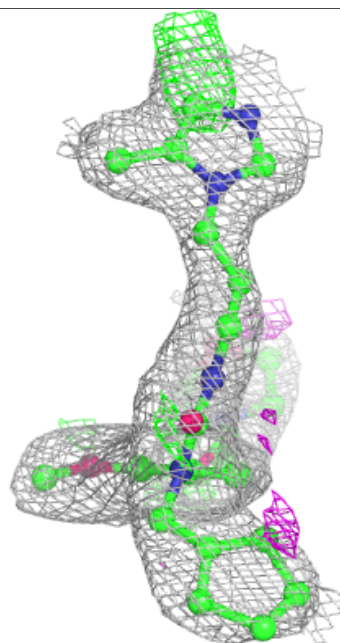
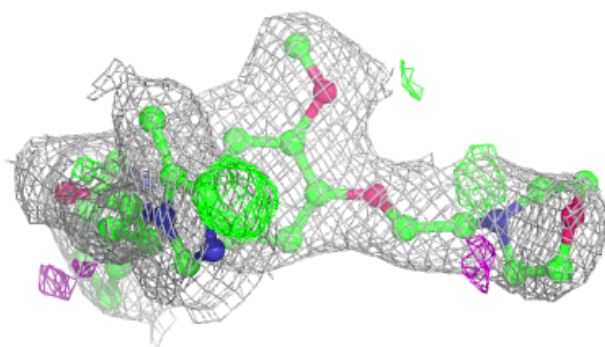
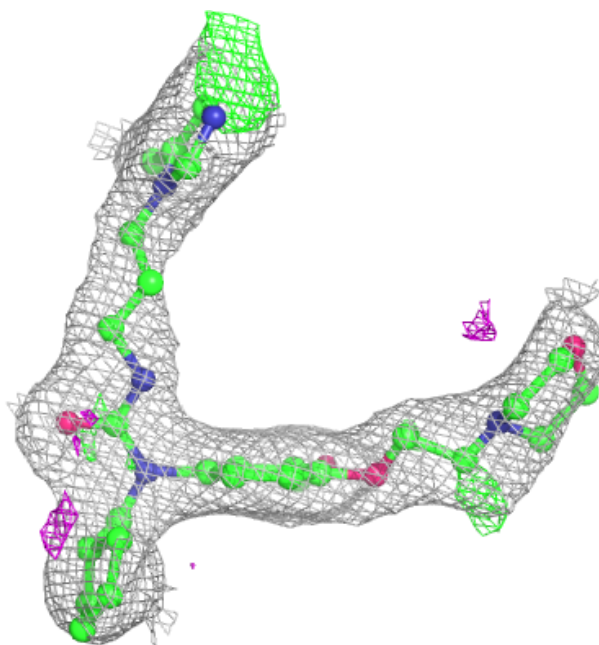
6.4 Ligands

Unable to reproduce the depositors R factor - this section is therefore empty.

The following is a graphical depiction of the model fit to experimental electron density of all instances of the Ligand of Interest. In addition, ligands with molecular weight > 250 and outliers as shown on the geometry validation Tables will also be included. Each fit is shown from different orientation to approximate a three-dimensional view.

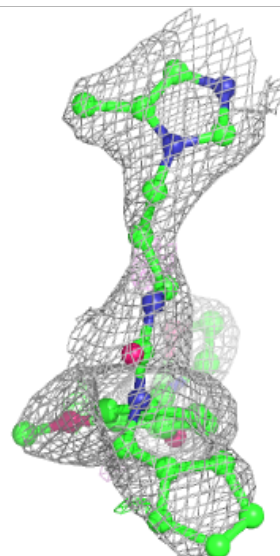
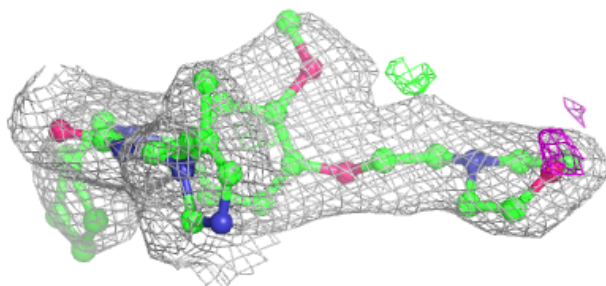
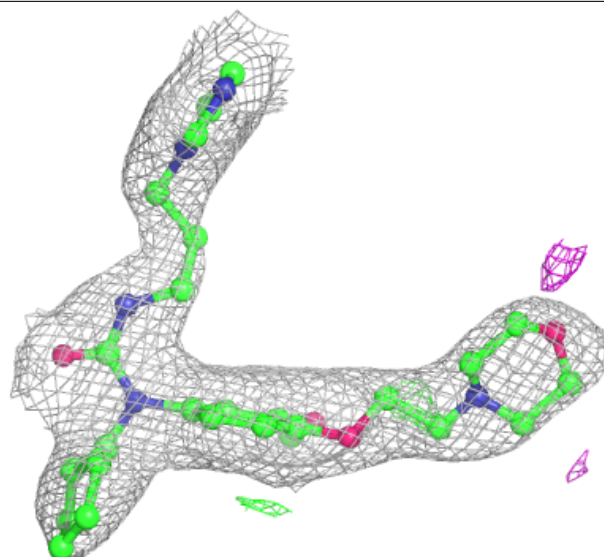
Electron density around G5R A 701:

$2mF_o-DF_c$ (at 0.7 rmsd) in gray
 mF_o-DF_c (at 3 rmsd) in purple (negative)
and green (positive)



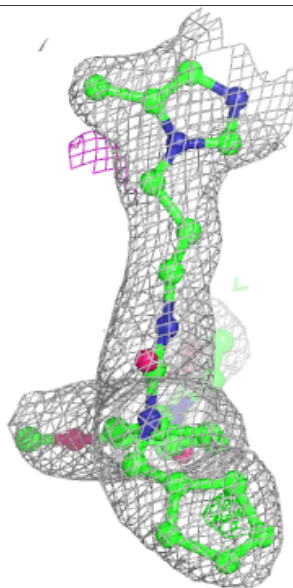
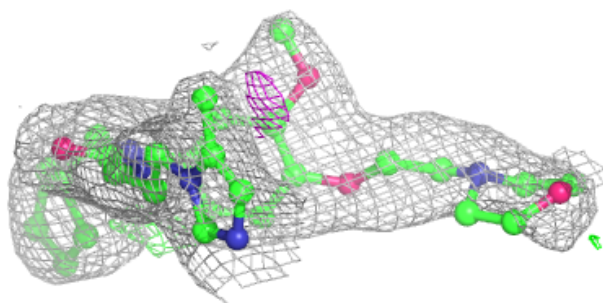
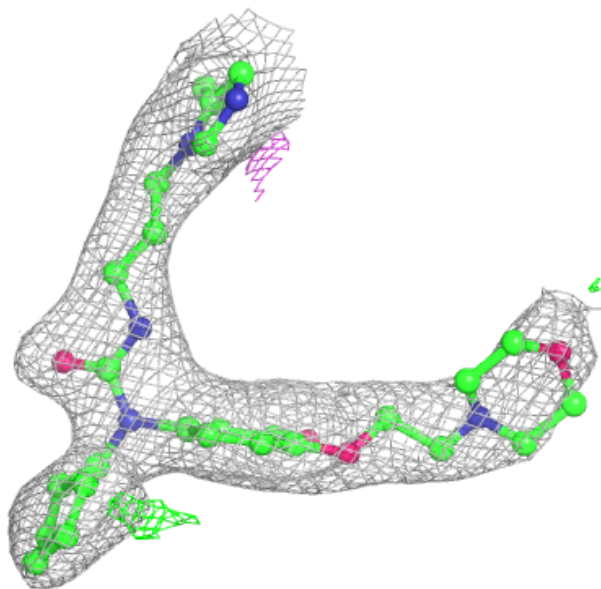
Electron density around G5R B 401:

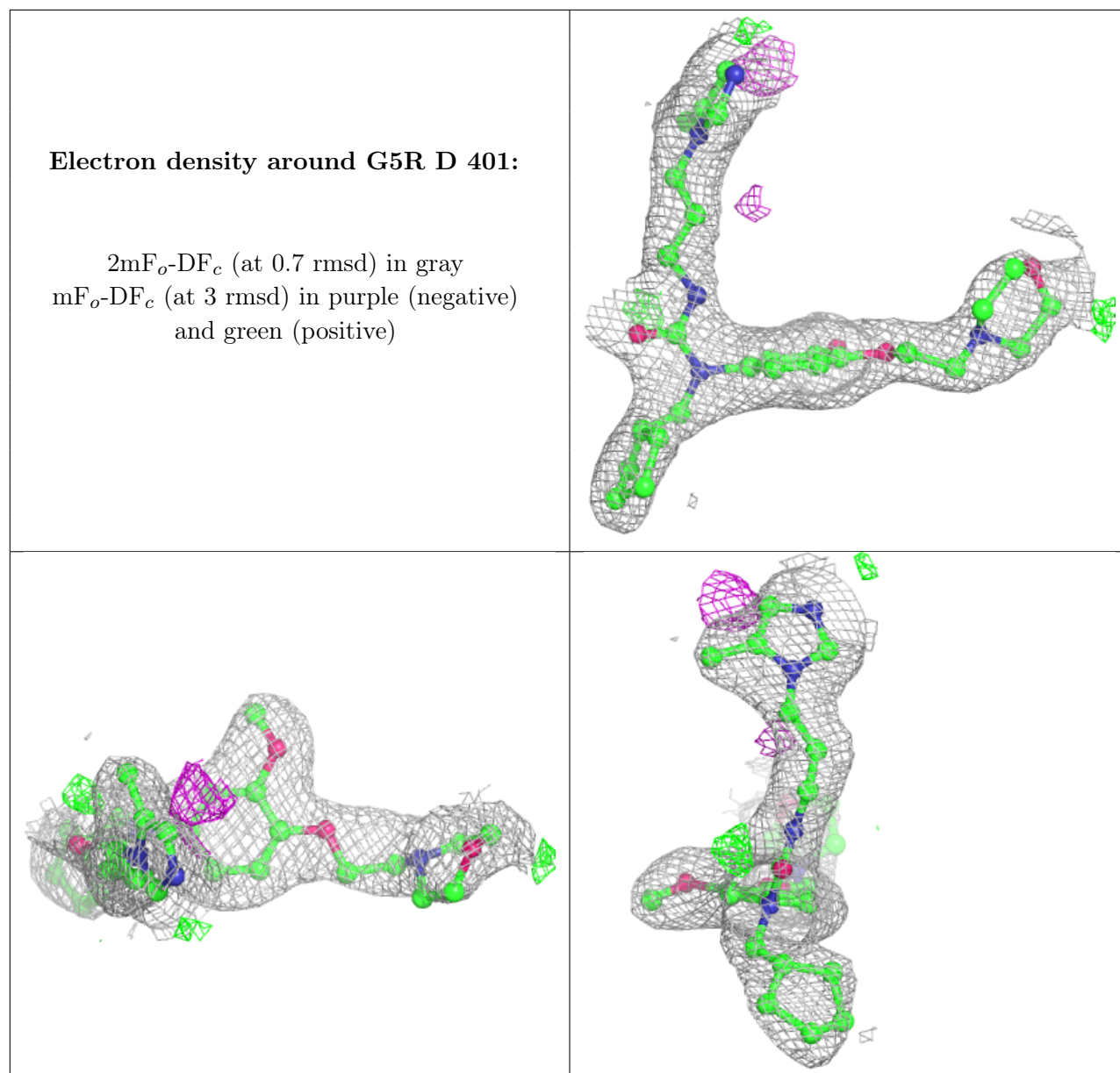
$2mF_o-DF_c$ (at 0.7 rmsd) in gray
 mF_o-DF_c (at 3 rmsd) in purple (negative)
and green (positive)



Electron density around G5R C 401:

$2mF_o-DF_c$ (at 0.7 rmsd) in gray
 mF_o-DF_c (at 3 rmsd) in purple (negative)
and green (positive)





6.5 Other polymers [\(i\)](#)

Unable to reproduce the depositors R factor - this section is therefore empty.