



Full wwPDB X-ray Structure Validation Report ⓘ

Dec 17, 2023 – 11:11 am GMT

PDB ID : 4CKL
Title : Structure of 55 kDa N-terminal domain of E. coli DNA gyrase A subunit with simocyclinone D8 bound
Authors : Hearnshaw, S.J.; Edwards, M.J.; Stevenson, C.E.M.; Lawson, D.M.; Maxwell, A.
Deposited on : 2014-01-07
Resolution : 2.05 Å(reported)

This is a Full wwPDB X-ray Structure Validation Report for a publicly released PDB entry.

We welcome your comments at validation@mail.wwpdb.org

A user guide is available at

<https://www.wwpdb.org/validation/2017/XrayValidationReportHelp>

with specific help available everywhere you see the ⓘ symbol.

The types of validation reports are described at

<http://www.wwpdb.org/validation/2017/FAQs#types>.

The following versions of software and data (see [references ⓘ](#)) were used in the production of this report:

MolProbity : 4.02b-467
Mogul : 1.8.4, CSD as541be (2020)
Xtriage (Phenix) : 1.13
EDS : 2.36
buster-report : 1.1.7 (2018)
Percentile statistics : 20191225.v01 (using entries in the PDB archive December 25th 2019)
Refmac : 5.8.0158
CCP4 : 7.0.044 (Gargrove)
Ideal geometry (proteins) : Engh & Huber (2001)
Ideal geometry (DNA, RNA) : Parkinson et al. (1996)
Validation Pipeline (wwPDB-VP) : 2.36

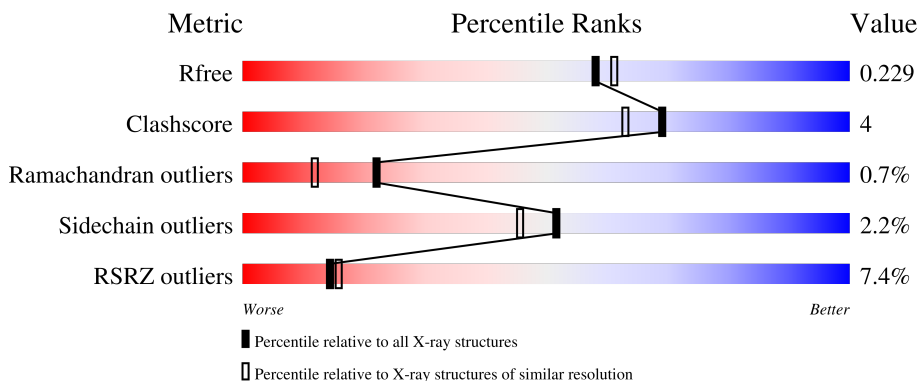
1 Overall quality at a glance

The following experimental techniques were used to determine the structure:

X-RAY DIFFRACTION

The reported resolution of this entry is 2.05 Å.

Percentile scores (ranging between 0-100) for global validation metrics of the entry are shown in the following graphic. The table shows the number of entries on which the scores are based.



Metric	Whole archive (#Entries)	Similar resolution (#Entries, resolution range(Å))
R_{free}	130704	1692 (2.04-2.04)
Clashscore	141614	1773 (2.04-2.04)
Ramachandran outliers	138981	1752 (2.04-2.04)
Sidechain outliers	138945	1752 (2.04-2.04)
RSRZ outliers	127900	1672 (2.04-2.04)

The table below summarises the geometric issues observed across the polymeric chains and their fit to the electron density. The red, orange, yellow and green segments of the lower bar indicate the fraction of residues that contain outliers for ≥ 3 , 2, 1 and 0 types of geometric quality criteria respectively. A grey segment represents the fraction of residues that are not modelled. The numeric value for each fraction is indicated below the corresponding segment, with a dot representing fractions $\leq 5\%$. The upper red bar (where present) indicates the fraction of residues that have poor fit to the electron density. The numeric value is given above the bar.

Mol	Chain	Length	Quality of chain
1	A	493	 4% 83% 7% • 9%
1	B	493	 10% 81% 6% • 12%

2 Entry composition [i](#)

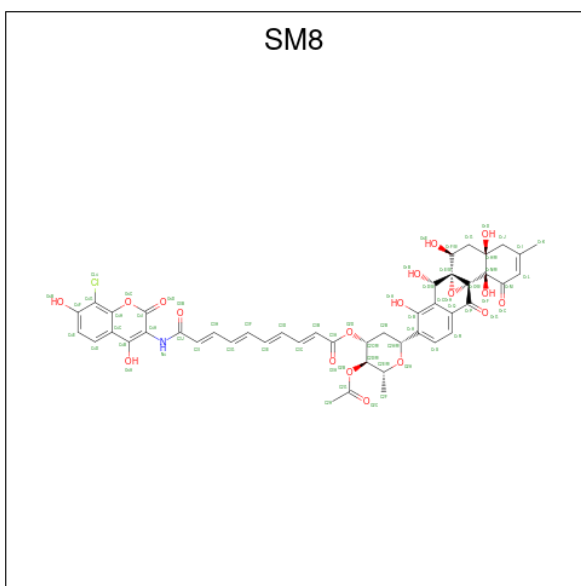
There are 3 unique types of molecules in this entry. The entry contains 7158 atoms, of which 0 are hydrogens and 0 are deuteriums.

In the tables below, the ZeroOcc column contains the number of atoms modelled with zero occupancy, the AltConf column contains the number of residues with at least one atom in alternate conformation and the Trace column contains the number of residues modelled with at most 2 atoms.

- Molecule 1 is a protein called DNA GYRASE SUBUNIT A.

Mol	Chain	Residues	Atoms					ZeroOcc	AltConf	Trace
			Total	C	N	O	S			
1	A	450	Total	C	N	O	S	0	1	0
			3454	2199	601	640	14			
1	B	434	Total	C	N	O	S	0	3	0
			3353	2121	603	616	13			

- Molecule 2 is SIMOCYCLINONE D8 (three-letter code: SM8) (formula: $C_{46}H_{42}ClNO_{18}$).



Mol	Chain	Residues	Atoms					ZeroOcc	AltConf
			Total	C	Cl	N	O		
2	A	1	Total	C	Cl	N	O	0	0
			66	46	1	1	18		

- Molecule 3 is water.

Mol	Chain	Residues	Atoms		ZeroOcc	AltConf
3	A	158	Total	O	0	1
			159	159		

Continued on next page...

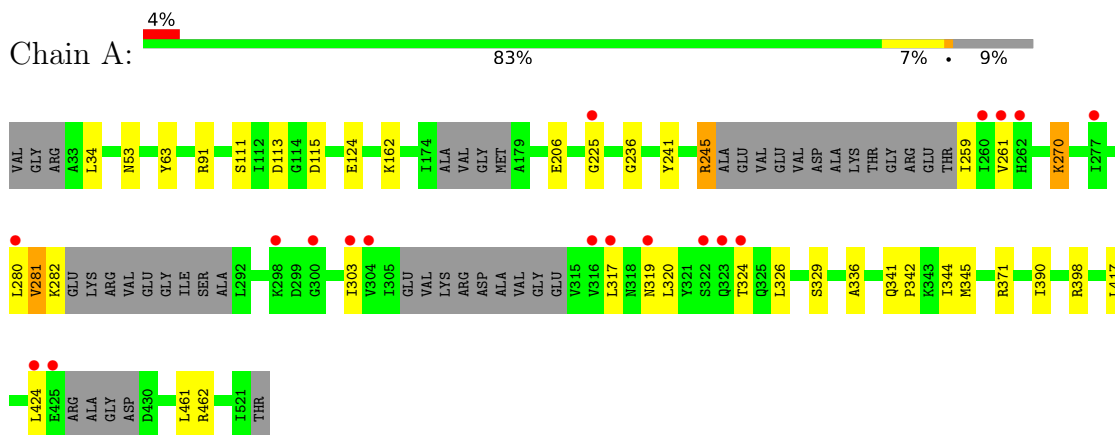
Continued from previous page...

Mol	Chain	Residues	Atoms		ZeroOcc	AltConf
3	B	126	Total 126	O 126	0	0

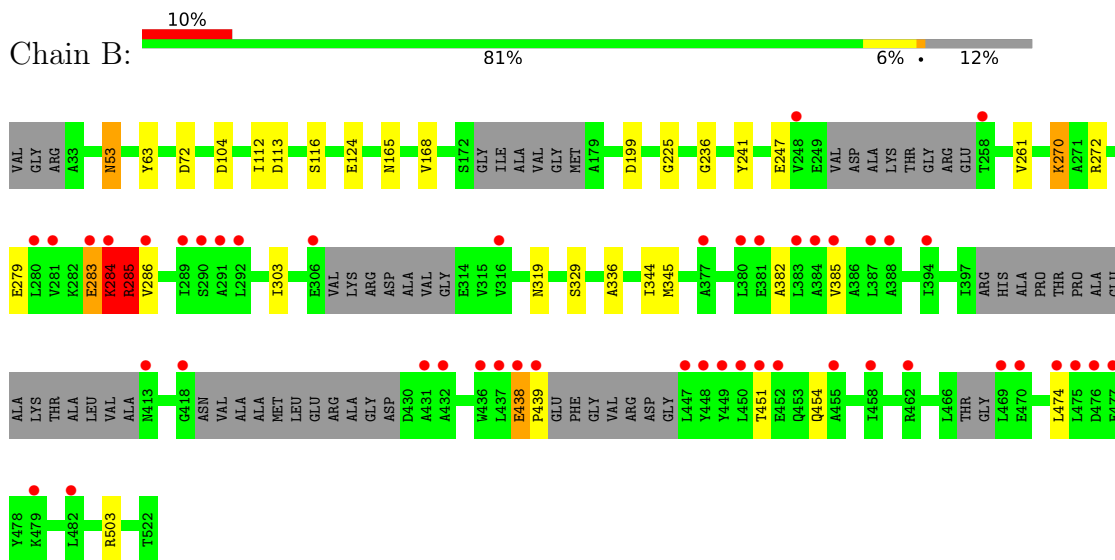
3 Residue-property plots [i](#)

These plots are drawn for all protein, RNA, DNA and oligosaccharide chains in the entry. The first graphic for a chain summarises the proportions of the various outlier classes displayed in the second graphic. The second graphic shows the sequence view annotated by issues in geometry and electron density. Residues are color-coded according to the number of geometric quality criteria for which they contain at least one outlier: green = 0, yellow = 1, orange = 2 and red = 3 or more. A red dot above a residue indicates a poor fit to the electron density ($RSRZ > 2$). Stretches of 2 or more consecutive residues without any outlier are shown as a green connector. Residues present in the sample, but not in the model, are shown in grey.

• Molecule 1: DNA GYRASE SUBUNIT A



• Molecule 1: DNA GYRASE SUBUNIT A



4 Data and refinement statistics

Property	Value	Source
Space group	C 1 2 1	Depositor
Cell constants a, b, c, α , β , γ	160.82Å 96.05Å 112.35Å 90.00° 132.72° 90.00°	Depositor
Resolution (Å)	41.51 – 2.05 41.51 – 2.05	Depositor EDS
% Data completeness (in resolution range)	98.8 (41.51-2.05) 98.8 (41.51-2.05)	Depositor EDS
R_{merge}	0.09	Depositor
R_{sym}	(Not available)	Depositor
$\langle I/\sigma(I) \rangle$ ¹	1.50 (at 2.05Å)	Xtrriage
Refinement program	REFMAC 5.7.0032	Depositor
R, R_{free}	0.196 , 0.225 0.202 , 0.229	Depositor DCC
R_{free} test set	3914 reflections (5.03%)	wwPDB-VP
Wilson B-factor (Å ²)	30.8	Xtrriage
Anisotropy	0.052	Xtrriage
Bulk solvent k_{sol} (e/Å ³), B_{sol} (Å ²)	0.36 , 51.6	EDS
L-test for twinning ²	$\langle L \rangle = 0.48$, $\langle L^2 \rangle = 0.31$	Xtrriage
Estimated twinning fraction	0.018 for h+2*k,-h-l 0.016 for h,-k,-h-l 0.024 for -h-2*k,-k,l	Xtrriage
F_o, F_c correlation	0.94	EDS
Total number of atoms	7158	wwPDB-VP
Average B, all atoms (Å ²)	42.0	wwPDB-VP

Xtrriage's analysis on translational NCS is as follows: *The largest off-origin peak in the Patterson function is 3.96% of the height of the origin peak. No significant pseudotranslation is detected.*

¹Intensities estimated from amplitudes.

²Theoretical values of $\langle |L| \rangle$, $\langle L^2 \rangle$ for acentric reflections are 0.5, 0.333 respectively for untwinned datasets, and 0.375, 0.2 for perfectly twinned datasets.

5 Model quality [i](#)

5.1 Standard geometry [i](#)

Bond lengths and bond angles in the following residue types are not validated in this section: SM8

The Z score for a bond length (or angle) is the number of standard deviations the observed value is removed from the expected value. A bond length (or angle) with $|Z| > 5$ is considered an outlier worth inspection. RMSZ is the root-mean-square of all Z scores of the bond lengths (or angles).

Mol	Chain	Bond lengths		Bond angles	
		RMSZ	# Z >5	RMSZ	# Z >5
1	A	0.63	0/3514	0.77	4/4765 (0.1%)
1	B	0.61	0/3412	0.73	1/4617 (0.0%)
All	All	0.62	0/6926	0.75	5/9382 (0.1%)

There are no bond length outliers.

All (5) bond angle outliers are listed below:

Mol	Chain	Res	Type	Atoms	Z	Observed(°)	Ideal(°)
1	A	461	LEU	CA-CB-CG	6.22	129.61	115.30
1	A	245	ARG	NE-CZ-NH1	6.09	123.35	120.30
1	A	245	ARG	CG-CD-NE	5.42	123.17	111.80
1	A	398	ARG	CB-CA-C	-5.39	99.62	110.40
1	B	104	ASP	CB-CG-OD1	5.27	123.04	118.30

There are no chirality outliers.

There are no planarity outliers.

5.2 Too-close contacts [i](#)

In the following table, the Non-H and H(model) columns list the number of non-hydrogen atoms and hydrogen atoms in the chain respectively. The H(added) column lists the number of hydrogen atoms added and optimized by MolProbity. The Clashes column lists the number of clashes within the asymmetric unit, whereas Symm-Clashes lists symmetry-related clashes.

Mol	Chain	Non-H	H(model)	H(added)	Clashes	Symm-Clashes
1	A	3454	0	3407	22	0
1	B	3353	0	3309	25	0
2	A	66	0	40	5	0
3	A	159	0	0	3	0

Continued on next page...

Continued from previous page...

Mol	Chain	Non-H	H(model)	H(added)	Clashes	Symm-Clashes
3	B	126	0	0	3	0
All	All	7158	0	6756	51	0

The all-atom clashscore is defined as the number of clashes found per 1000 atoms (including hydrogen atoms). The all-atom clashscore for this structure is 4.

All (51) close contacts within the same asymmetric unit are listed below, sorted by their clash magnitude.

Atom-1	Atom-2	Interatomic distance (Å)	Clash overlap (Å)
1:B:344:ILE:HG22	3:B:2107:HOH:O	1.73	0.87
2:A:1522:SM8:O4D	2:A:1522:SM8:C3J	2.19	0.85
1:A:91:ARG:NH1	2:A:1522:SM8:O4D	2.17	0.78
1:B:438:GLU:HG3	1:B:439:PRO:CD	2.19	0.73
1:A:336:ALA:HB3	1:A:345[A]:MET:HE1	1.75	0.69
1:A:324:THR:HG22	1:A:326:LEU:H	1.57	0.68
1:A:111:SER:OG	1:A:115:ASP:OD1	2.08	0.68
1:A:320:LEU:O	1:A:324:THR:HB	1.94	0.67
2:A:1522:SM8:O1H	2:A:1522:SM8:H21J	1.92	0.67
1:B:112:ILE:HD11	3:B:2043:HOH:O	1.96	0.65
1:B:336:ALA:HB3	1:B:345[A]:MET:HE1	1.79	0.65
1:B:438:GLU:HG3	1:B:439:PRO:HD3	1.80	0.63
1:B:382:ALA:O	1:B:385:VAL:HG12	2.00	0.62
1:A:281:VAL:HG12	1:A:281:VAL:O	1.99	0.61
1:B:112:ILE:CD1	3:B:2043:HOH:O	2.48	0.61
1:B:284:LYS:O	1:B:286:VAL:N	2.34	0.61
1:A:259:ILE:CB	1:A:317:LEU:HD11	2.31	0.60
1:B:283:GLU:O	1:B:284:LYS:HB3	2.01	0.59
1:B:438:GLU:O	1:B:439:PRO:C	2.40	0.59
2:A:1522:SM8:O3B	2:A:1522:SM8:C4I	2.44	0.58
1:A:63:TYR:HB3	1:A:124:GLU:HB3	1.88	0.56
1:B:284:LYS:CG	1:B:285:ARG:N	2.70	0.55
1:B:451:THR:HG23	1:B:454:GLN:H	1.75	0.52
1:B:199:ASP:OD1	1:B:503:ARG:NH2	2.45	0.50
1:B:63:TYR:HB3	1:B:124:GLU:HB3	1.93	0.50
1:A:371:ARG:HG3	3:A:2103:HOH:O	2.11	0.49
1:B:241:TYR:CE2	1:B:329:SER:HB3	2.48	0.49
2:A:1522:SM8:O4D	2:A:1522:SM8:O3B	2.32	0.48
1:B:279:GLU:O	1:B:283:GLU:HB2	2.16	0.46
1:B:336:ALA:HB3	1:B:345[A]:MET:CE	2.45	0.45
1:A:280:LEU:C	1:A:282:LYS:H	2.20	0.45
1:A:113:ASP:OD1	1:A:270:LYS:HB3	2.17	0.45

Continued on next page...

Continued from previous page...

Atom-1	Atom-2	Interatomic distance (Å)	Clash overlap (Å)
1:B:236:GLY:HA3	1:B:344:ILE:HD11	1.99	0.45
1:A:241:TYR:CE2	1:A:329:SER:HB3	2.52	0.44
1:A:336:ALA:HB3	1:A:345[A]:MET:CE	2.43	0.44
1:B:113:ASP:OD1	1:B:270:LYS:HB3	2.17	0.43
1:B:451:THR:HG22	1:B:454:GLN:OE1	2.19	0.43
1:A:261:VAL:HB	1:A:303:ILE:HB	2.00	0.43
1:B:261:VAL:HB	1:B:303:ILE:HB	2.01	0.43
1:A:162:LYS:NZ	3:A:2061:HOH:O	2.29	0.42
1:A:236:GLY:HA3	1:A:344:ILE:HD11	2.01	0.42
1:B:474:LEU:C	1:B:474:LEU:HD23	2.41	0.41
1:A:417:LEU:HD22	1:A:424:LEU:HD12	2.02	0.41
1:A:280:LEU:O	1:A:282:LYS:N	2.52	0.41
1:A:462:ARG:HG3	3:A:2141:HOH:O	2.21	0.41
1:A:390:ILE:HD12	1:A:390:ILE:HA	1.94	0.41
1:A:341:GLN:HG3	1:A:342:PRO:HD2	2.03	0.40
1:B:438:GLU:HB3	1:B:439:PRO:HD2	2.02	0.40
1:B:165:ASN:HA	1:B:168:VAL:HG22	2.02	0.40
1:A:34:LEU:CD1	1:A:342:PRO:HB3	2.51	0.40

There are no symmetry-related clashes.

5.3 Torsion angles [i](#)

5.3.1 Protein backbone [i](#)

In the following table, the Percentiles column shows the percent Ramachandran outliers of the chain as a percentile score with respect to all X-ray entries followed by that with respect to entries of similar resolution.

The Analysed column shows the number of residues for which the backbone conformation was analysed, and the total number of residues.

Mol	Chain	Analysed	Favoured	Allowed	Outliers	Percentiles	
1	A	439/493 (89%)	430 (98%)	7 (2%)	2 (0%)	29	18
1	B	421/493 (85%)	412 (98%)	5 (1%)	4 (1%)	15	6
All	All	860/986 (87%)	842 (98%)	12 (1%)	6 (1%)	22	12

All (6) Ramachandran outliers are listed below:

Mol	Chain	Res	Type
1	B	284	LYS
1	A	225	GLY
1	A	281	VAL
1	B	285	ARG
1	B	438	GLU
1	B	225	GLY

5.3.2 Protein sidechains [i](#)

In the following table, the Percentiles column shows the percent sidechain outliers of the chain as a percentile score with respect to all X-ray entries followed by that with respect to entries of similar resolution.

The Analysed column shows the number of residues for which the sidechain conformation was analysed, and the total number of residues.

Mol	Chain	Analysed	Rotameric	Outliers	Percentiles	
1	A	348/411 (85%)	343 (99%)	5 (1%)	67	65
1	B	339/411 (82%)	328 (97%)	11 (3%)	39	32
All	All	687/822 (84%)	671 (98%)	16 (2%)	52	44

All (16) residues with a non-rotameric sidechain are listed below:

Mol	Chain	Res	Type
1	A	53	ASN
1	A	206	GLU
1	A	245	ARG
1	A	270	LYS
1	A	319	ASN
1	B	53[A]	ASN
1	B	53[B]	ASN
1	B	72	ASP
1	B	116	SER
1	B	247	GLU
1	B	270	LYS
1	B	272	ARG
1	B	283	GLU
1	B	284	LYS
1	B	285	ARG
1	B	319	ASN

Sometimes sidechains can be flipped to improve hydrogen bonding and reduce clashes. All (1) such sidechains are listed below:

Mol	Chain	Res	Type
1	A	53	ASN

5.3.3 RNA [i](#)

There are no RNA molecules in this entry.

5.4 Non-standard residues in protein, DNA, RNA chains [i](#)

There are no non-standard protein/DNA/RNA residues in this entry.

5.5 Carbohydrates [i](#)

There are no monosaccharides in this entry.

5.6 Ligand geometry [i](#)

1 ligand is modelled in this entry.

In the following table, the Counts columns list the number of bonds (or angles) for which Mogul statistics could be retrieved, the number of bonds (or angles) that are observed in the model and the number of bonds (or angles) that are defined in the Chemical Component Dictionary. The Link column lists molecule types, if any, to which the group is linked. The Z score for a bond length (or angle) is the number of standard deviations the observed value is removed from the expected value. A bond length (or angle) with $|Z| > 2$ is considered an outlier worth inspection. RMSZ is the root-mean-square of all Z scores of the bond lengths (or angles).

Mol	Type	Chain	Res	Link	Bond lengths			Bond angles		
					Counts	RMSZ	# $ Z > 2$	Counts	RMSZ	# $ Z > 2$
2	SM8	A	1522	-	68,73,73	3.00	31 (45%)	77,115,115	2.43	24 (31%)

In the following table, the Chirals column lists the number of chiral outliers, the number of chiral centers analysed, the number of these observed in the model and the number defined in the Chemical Component Dictionary. Similar counts are reported in the Torsion and Rings columns. '-' means no outliers of that kind were identified.

Mol	Type	Chain	Res	Link	Chirals	Torsions	Rings
2	SM8	A	1522	-	-	3/27/119/119	0/8/8/8

All (31) bond length outliers are listed below:

Mol	Chain	Res	Type	Atoms	Z	Observed(Å)	Ideal(Å)
2	A	1522	SM8	O4C-C4I	-7.97	1.27	1.38
2	A	1522	SM8	C1C-C1D	-7.87	1.45	1.51
2	A	1522	SM8	C3H-C3I	7.87	1.54	1.34
2	A	1522	SM8	C4A-N4	-6.33	1.27	1.41
2	A	1522	SM8	C3C-C3B	6.17	1.50	1.34
2	A	1522	SM8	C3F-C3G	5.80	1.51	1.36
2	A	1522	SM8	C3D-C3E	5.58	1.50	1.36
2	A	1522	SM8	C4C-C4B	-5.05	1.37	1.45
2	A	1522	SM8	C1J-C1H	4.31	1.58	1.53
2	A	1522	SM8	C1K-C1I	-4.23	1.39	1.50
2	A	1522	SM8	C1Q-C1P	-4.18	1.42	1.48
2	A	1522	SM8	C4H-C4G	-4.15	1.29	1.39
2	A	1522	SM8	C1A-C2A	-3.64	1.42	1.52
2	A	1522	SM8	C4A-C4B	3.20	1.40	1.37
2	A	1522	SM8	C4G-CL4	3.18	1.79	1.72
2	A	1522	SM8	C4A-C4I	-3.12	1.36	1.45
2	A	1522	SM8	C1L-C1M	-2.99	1.39	1.45
2	A	1522	SM8	C3E-C3F	2.97	1.52	1.44
2	A	1522	SM8	O1D-C1H	2.94	1.48	1.44
2	A	1522	SM8	C1G-C1H	2.89	1.56	1.53
2	A	1522	SM8	C3C-C3D	2.82	1.52	1.44
2	A	1522	SM8	C3G-C3H	2.81	1.52	1.44
2	A	1522	SM8	C1J-C1I	-2.75	1.42	1.49
2	A	1522	SM8	C3I-C3J	2.64	1.53	1.48
2	A	1522	SM8	O2B-C2D	-2.36	1.41	1.44
2	A	1522	SM8	C4D-C4E	2.35	1.43	1.38
2	A	1522	SM8	O1H-C1O	2.28	1.52	1.45
2	A	1522	SM8	O1H-C1E	-2.26	1.41	1.45
2	A	1522	SM8	C1L-C1I	2.20	1.39	1.33
2	A	1522	SM8	O2D-C3A	2.16	1.39	1.34
2	A	1522	SM8	C2B-C2C	2.08	1.56	1.52

All (24) bond angle outliers are listed below:

Mol	Chain	Res	Type	Atoms	Z	Observed(°)	Ideal(°)
2	A	1522	SM8	C3E-C3F-C3G	-9.38	103.94	124.81
2	A	1522	SM8	C3H-C3G-C3F	-6.34	110.69	124.81
2	A	1522	SM8	C3H-C3I-C3J	-5.71	108.20	122.57
2	A	1522	SM8	C3C-C3D-C3E	-5.28	113.05	124.81
2	A	1522	SM8	C3D-C3C-C3B	-4.70	112.93	124.67
2	A	1522	SM8	C3F-C3E-C3D	-4.54	114.71	124.81
2	A	1522	SM8	C3C-C3B-C3A	-4.02	113.47	123.36
2	A	1522	SM8	O4C-C4I-O4D	4.00	121.50	116.22

Continued on next page...

Continued from previous page...

Mol	Chain	Res	Type	Atoms	Z	Observed(°)	Ideal(°)
2	A	1522	SM8	O1H-C1E-C1O	3.98	62.45	60.07
2	A	1522	SM8	C3G-C3H-C3I	-3.44	116.09	124.67
2	A	1522	SM8	C4D-C4E-C4F	-3.11	117.31	120.50
2	A	1522	SM8	O4A-C4B-C4C	3.03	120.83	115.53
2	A	1522	SM8	O1D-C1H-C1J	3.00	115.19	108.00
2	A	1522	SM8	O2D-C2C-C2D	2.89	113.11	107.70
2	A	1522	SM8	C1N-C1M-C1L	2.88	122.34	116.99
2	A	1522	SM8	C1C-C1B-C1A	2.81	124.48	121.05
2	A	1522	SM8	O2B-C2G-C2H	2.68	116.01	111.09
2	A	1522	SM8	C1H-C1G-C1F	2.65	115.97	113.94
2	A	1522	SM8	C4E-C4F-C4G	2.29	121.25	119.42
2	A	1522	SM8	O2D-C3A-O3A	2.27	127.04	123.35
2	A	1522	SM8	C2D-O2B-C2G	-2.27	114.21	117.72
2	A	1522	SM8	O4C-C4H-C4C	2.26	123.96	121.27
2	A	1522	SM8	O1G-C1P-C1Q	-2.07	119.25	122.31
2	A	1522	SM8	C3I-C3J-N4	2.03	117.49	114.22

There are no chirality outliers.

All (3) torsion outliers are listed below:

Mol	Chain	Res	Type	Atoms
2	A	1522	SM8	O3B-C3J-N4-C4A
2	A	1522	SM8	C3I-C3J-N4-C4A
2	A	1522	SM8	C4I-C4A-N4-C3J

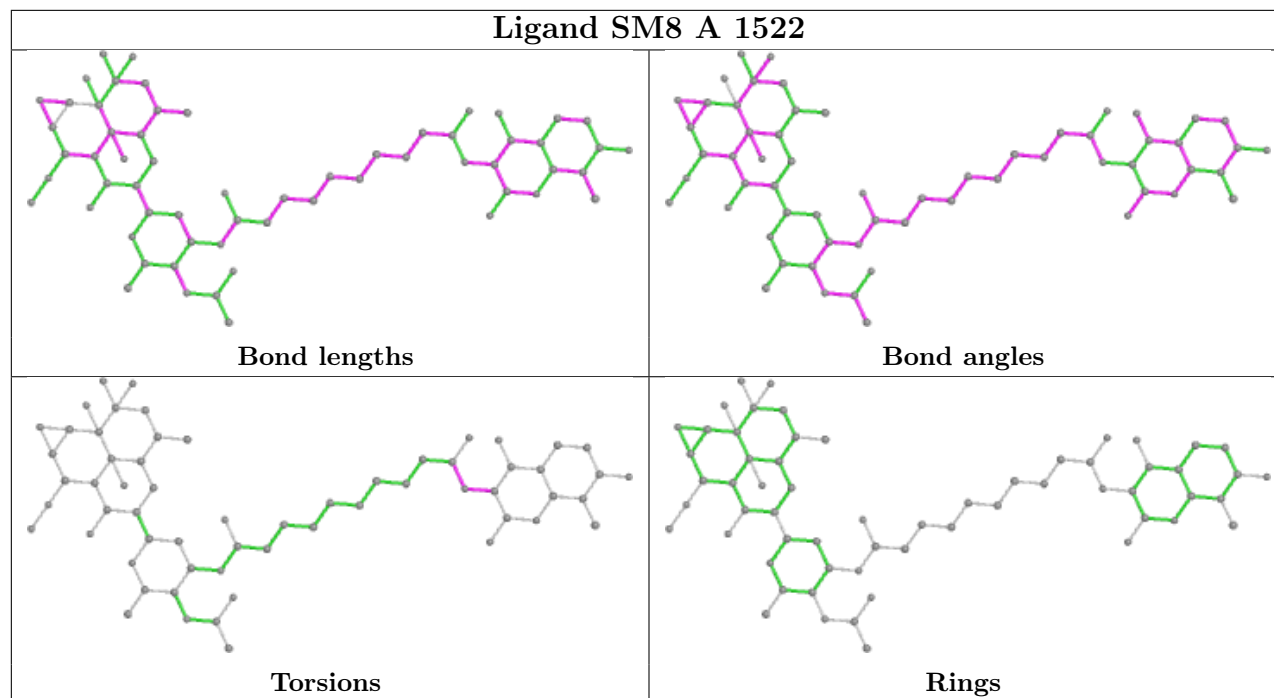
There are no ring outliers.

1 monomer is involved in 5 short contacts:

Mol	Chain	Res	Type	Clashes	Symm-Clashes
2	A	1522	SM8	5	0

The following is a two-dimensional graphical depiction of Mogul quality analysis of bond lengths, bond angles, torsion angles, and ring geometry for all instances of the Ligand of Interest. In addition, ligands with molecular weight > 250 and outliers as shown on the validation Tables will also be included. For torsion angles, if less than 5% of the Mogul distribution of torsion angles is within 10 degrees of the torsion angle in question, then that torsion angle is considered an outlier. Any bond that is central to one or more torsion angles identified as an outlier by Mogul will be highlighted in the graph. For rings, the root-mean-square deviation (RMSD) between the ring in question and similar rings identified by Mogul is calculated over all ring torsion angles. If the average RMSD is greater than 60 degrees and the minimal RMSD between the ring in question and any Mogul-identified rings is also greater than 60 degrees, then that ring is considered an outlier. The outliers are highlighted in purple. The color gray indicates Mogul did not find sufficient

equivalents in the CSD to analyse the geometry.



5.7 Other polymers [i](#)

There are no such residues in this entry.

5.8 Polymer linkage issues [i](#)

There are no chain breaks in this entry.

6 Fit of model and data

6.1 Protein, DNA and RNA chains

In the following table, the column labelled ‘#RSRZ > 2’ contains the number (and percentage) of RSRZ outliers, followed by percent RSRZ outliers for the chain as percentile scores relative to all X-ray entries and entries of similar resolution. The OWAB column contains the minimum, median, 95th percentile and maximum values of the occupancy-weighted average B-factor per residue. The column labelled ‘Q < 0.9’ lists the number of (and percentage) of residues with an average occupancy less than 0.9.

Mol	Chain	Analysed	<RSRZ>	#RSRZ>2	OWAB(Å ²)	Q<0.9
1	A	450/493 (91%)	-0.01	18 (4%) 38 41	22, 35, 81, 111	0
1	B	434/493 (88%)	0.29	47 (10%) 5 6	22, 38, 78, 131	0
All	All	884/986 (89%)	0.14	65 (7%) 14 16	22, 37, 80, 131	0

All (65) RSRZ outliers are listed below:

Mol	Chain	Res	Type	RSRZ
1	B	436	TRP	6.9
1	A	280	LEU	6.0
1	B	469	LEU	5.7
1	B	384	ALA	5.6
1	B	431	ALA	5.6
1	B	437	LEU	5.4
1	B	383	LEU	5.2
1	A	319	ASN	5.0
1	A	298	LYS	5.0
1	B	291	ALA	4.8
1	B	388	ALA	4.7
1	A	225	GLY	4.5
1	B	450	LEU	4.4
1	B	448	TYR	4.2
1	A	300	GLY	4.2
1	A	260	ILE	4.1
1	B	439	PRO	4.0
1	A	304	VAL	3.9
1	A	303	ILE	3.8
1	B	447	LEU	3.7
1	B	284	LYS	3.7
1	B	477	GLU	3.5
1	B	455	ALA	3.3
1	B	438	GLU	3.3

Continued on next page...

Continued from previous page...

Mol	Chain	Res	Type	RSRZ
1	B	475	LEU	3.3
1	B	458	ILE	3.2
1	A	323	GLN	3.1
1	B	449	TYR	3.1
1	B	280	LEU	2.9
1	B	394	ILE	2.9
1	B	290	SER	2.9
1	B	286	VAL	2.8
1	B	479	LYS	2.8
1	B	476	ASP	2.8
1	B	452	GLU	2.7
1	B	474	LEU	2.6
1	A	322	SER	2.6
1	B	482	LEU	2.6
1	B	462	ARG	2.5
1	A	277	ILE	2.5
1	B	248	VAL	2.5
1	A	317	LEU	2.5
1	B	258	THR	2.5
1	A	324	THR	2.4
1	B	316	VAL	2.4
1	B	470	GLU	2.4
1	B	418	GLY	2.4
1	B	377	ALA	2.4
1	B	292	LEU	2.3
1	B	387	LEU	2.3
1	B	283	GLU	2.3
1	B	306	GLU	2.3
1	A	262	HIS	2.3
1	B	281	VAL	2.2
1	B	385	VAL	2.2
1	A	261	VAL	2.2
1	B	451	THR	2.2
1	B	289	ILE	2.2
1	B	432	ALA	2.2
1	A	316	VAL	2.1
1	A	424	LEU	2.1
1	B	380	LEU	2.1
1	B	413	ASN	2.1
1	A	425	GLU	2.0
1	B	381	GLU	2.0

6.2 Non-standard residues in protein, DNA, RNA chains [i](#)

There are no non-standard protein/DNA/RNA residues in this entry.

6.3 Carbohydrates [i](#)

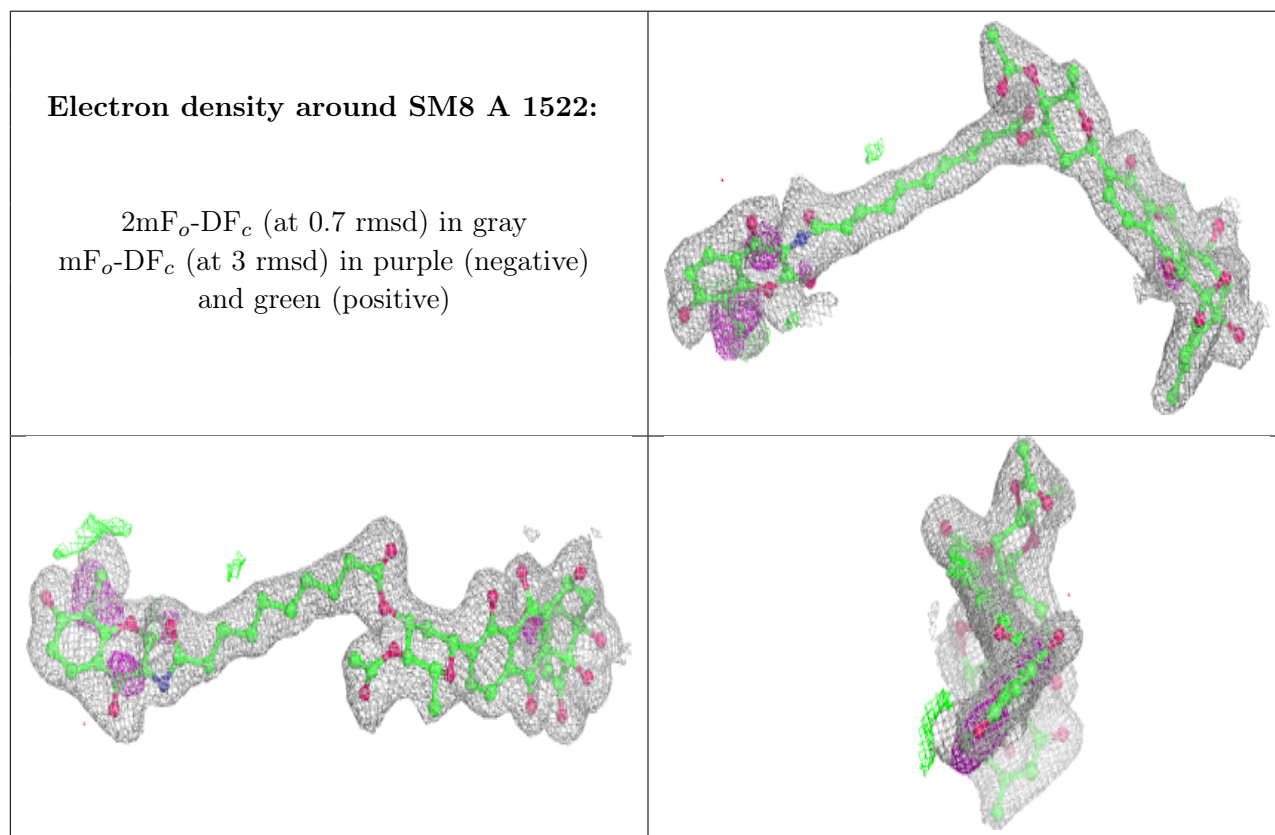
There are no monosaccharides in this entry.

6.4 Ligands [i](#)

In the following table, the Atoms column lists the number of modelled atoms in the group and the number defined in the chemical component dictionary. The B-factors column lists the minimum, median, 95th percentile and maximum values of B factors of atoms in the group. The column labelled 'Q < 0.9' lists the number of atoms with occupancy less than 0.9.

Mol	Type	Chain	Res	Atoms	RSCC	RSR	B-factors(\AA^2)	Q<0.9
2	SM8	A	1522	66/66	0.90	0.11	28,41,58,89	0

The following is a graphical depiction of the model fit to experimental electron density of all instances of the Ligand of Interest. In addition, ligands with molecular weight > 250 and outliers as shown on the geometry validation Tables will also be included. Each fit is shown from different orientation to approximate a three-dimensional view.



6.5 Other polymers [i](#)

There are no such residues in this entry.