



# wwPDB X-ray Structure Validation Summary Report ⓘ

Sep 18, 2023 – 03:29 PM EDT

PDB ID : 5CJO  
Title : Crystal Structure Analysis of Elbow-Engineered-Fab-Bound Human Insulin Degrading Enzyme (IDE) in Complex with Insulin  
Authors : liang, w.g.; bailey, L.; tang, w.j.  
Deposited on : 2015-07-14  
Resolution : 3.29 Å(reported)

This is a wwPDB X-ray Structure Validation Summary Report for a publicly released PDB entry.

We welcome your comments at [validation@mail.wwpdb.org](mailto:validation@mail.wwpdb.org)

A user guide is available at

<https://www.wwpdb.org/validation/2017/XrayValidationReportHelp>

with specific help available everywhere you see the ⓘ symbol.

The types of validation reports are described at

<http://www.wwpdb.org/validation/2017/FAQs#types>.

---

The following versions of software and data (see [references ⓘ](#)) were used in the production of this report:

MolProbity : 4.02b-467  
Mogul : 1.8.5 (274361), CSD as541be (2020)  
Xtriage (Phenix) : 1.13  
EDS : 2.35.1  
Percentile statistics : 20191225.v01 (using entries in the PDB archive December 25th 2019)  
Refmac : 5.8.0158  
CCP4 : 7.0.044 (Gargrove)  
Ideal geometry (proteins) : Engh & Huber (2001)  
Ideal geometry (DNA, RNA) : Parkinson et al. (1996)  
Validation Pipeline (wwPDB-VP) : 2.35.1

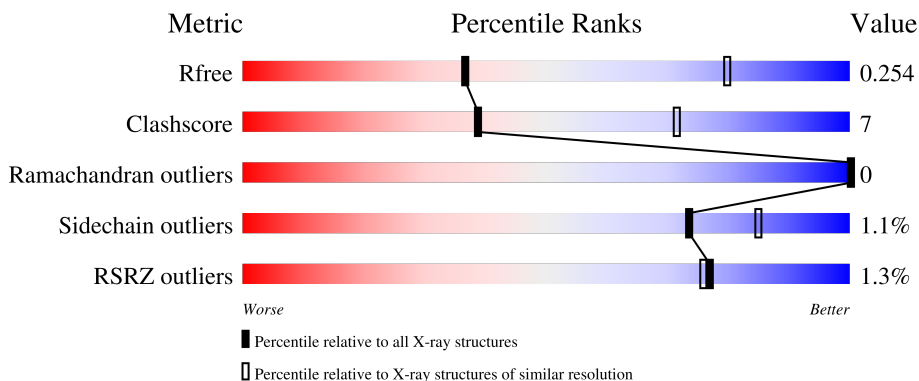
# 1 Overall quality at a glance

The following experimental techniques were used to determine the structure:

*X-RAY DIFFRACTION*

The reported resolution of this entry is 3.29 Å.

Percentile scores (ranging between 0-100) for global validation metrics of the entry are shown in the following graphic. The table shows the number of entries on which the scores are based.



Metric	Whole archive (#Entries)	Similar resolution (#Entries, resolution range(Å))
$R_{free}$	130704	1177 (3.32-3.24)
Clashscore	141614	1044 (3.30-3.26)
Ramachandran outliers	138981	1026 (3.30-3.26)
Sidechain outliers	138945	1025 (3.30-3.26)
RSRZ outliers	127900	1141 (3.32-3.24)

The table below summarises the geometric issues observed across the polymeric chains and their fit to the electron density. The red, orange, yellow and green segments of the lower bar indicate the fraction of residues that contain outliers for  $\geq 3$ , 2, 1 and 0 types of geometric quality criteria respectively. A grey segment represents the fraction of residues that are not modelled. The numeric value for each fraction is indicated below the corresponding segment, with a dot representing fractions  $\leq 5\%$ . The upper red bar (where present) indicates the fraction of residues that have poor fit to the electron density. The numeric value is given above the bar.

Mol	Chain	Length	Quality of chain
1	A	990	 84% 13% • 2%
2	H	239	 68% 21% • 10% 2%
3	L	216	 69% 18% • 12% 4%
4	a	20	 30% 5% 65% 15%

## 2 Entry composition [i](#)

There are 6 unique types of molecules in this entry. The entry contains 10966 atoms, of which 0 are hydrogens and 0 are deuteriums.

In the tables below, the ZeroOcc column contains the number of atoms modelled with zero occupancy, the AltConf column contains the number of residues with at least one atom in alternate conformation and the Trace column contains the number of residues modelled with at most 2 atoms.

- Molecule 1 is a protein called Insulin-degrading enzyme.

Mol	Chain	Residues	Atoms					ZeroOcc	AltConf	Trace
			Total	C	N	O	S			
1	A	959	7848	5055	1318	1453	22	0	0	0

There are 26 discrepancies between the modelled and reference sequences:

Chain	Residue	Modelled	Actual	Comment	Reference
A	30	MET	-	expression tag	UNP P14735
A	31	HIS	-	expression tag	UNP P14735
A	32	HIS	-	expression tag	UNP P14735
A	33	HIS	-	expression tag	UNP P14735
A	34	HIS	-	expression tag	UNP P14735
A	35	HIS	-	expression tag	UNP P14735
A	36	HIS	-	expression tag	UNP P14735
A	37	ALA	-	expression tag	UNP P14735
A	38	ALA	-	expression tag	UNP P14735
A	39	GLY	-	expression tag	UNP P14735
A	40	ILE	-	expression tag	UNP P14735
A	41	PRO	-	expression tag	UNP P14735
A	110	LEU	CYS	engineered mutation	UNP P14735
A	111	GLN	GLU	engineered mutation	UNP P14735
A	171	SER	CYS	engineered mutation	UNP P14735
A	178	ALA	CYS	engineered mutation	UNP P14735
A	257	VAL	CYS	engineered mutation	UNP P14735
A	414	LEU	CYS	engineered mutation	UNP P14735
A	573	ASN	CYS	engineered mutation	UNP P14735
A	590	SER	CYS	engineered mutation	UNP P14735
A	789	SER	CYS	engineered mutation	UNP P14735
A	812	ALA	CYS	engineered mutation	UNP P14735
A	819	ALA	CYS	engineered mutation	UNP P14735
A	904	SER	CYS	engineered mutation	UNP P14735
A	966	ASN	CYS	engineered mutation	UNP P14735
A	974	ALA	CYS	engineered mutation	UNP P14735

- Molecule 2 is a protein called FAB Heavy chain with engineered elbow.

Mol	Chain	Residues	Atoms					ZeroOcc	AltConf	Trace
			Total	C	N	O	S			
2	H	215	1623	1032	269	315	7	0	0	0

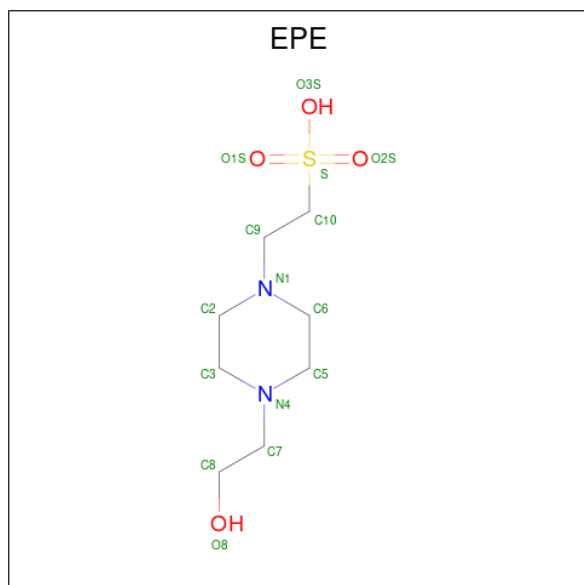
- Molecule 3 is a protein called FAB light chain.

Mol	Chain	Residues	Atoms					ZeroOcc	AltConf	Trace
			Total	C	N	O	S			
3	L	190	1422	895	239	283	5	0	0	0

- Molecule 4 is a protein called Insulin.

Mol	Chain	Residues	Atoms				ZeroOcc	AltConf	Trace
			Total	C	N	O			
4	a	7	57	38	8	11	0	0	0

- Molecule 5 is 4-(2-HYDROXYETHYL)-1-PIPERAZINE ETHANESULFONIC ACID (three-letter code: EPE) (formula: C<sub>8</sub>H<sub>18</sub>N<sub>2</sub>O<sub>4</sub>S).



Mol	Chain	Residues	Atoms					ZeroOcc	AltConf
			Total	C	N	O	S		
5	A	1	15	8	2	4	1	0	0

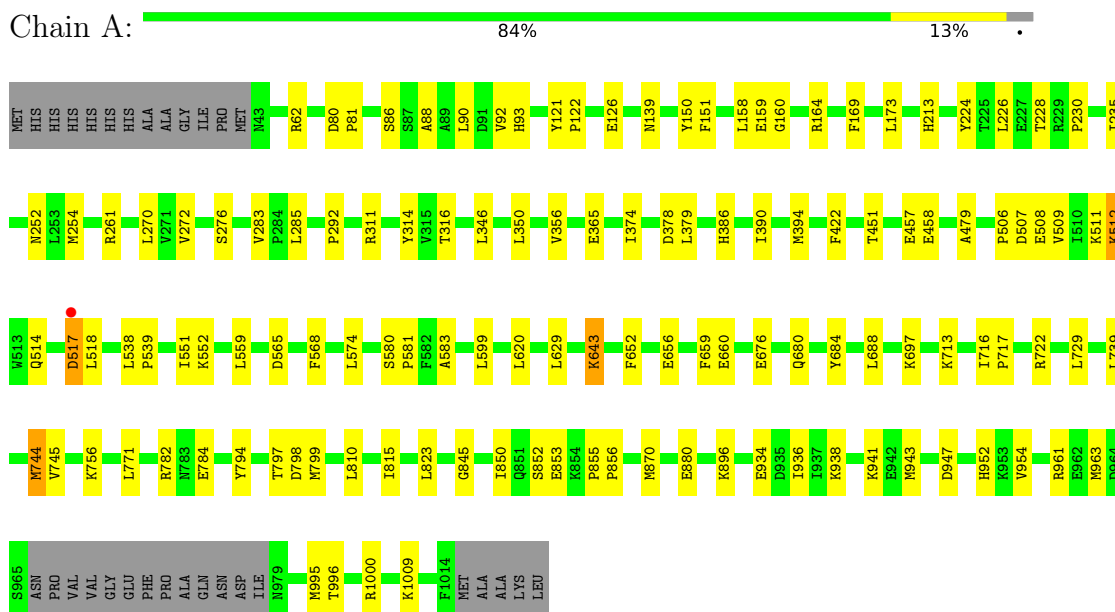
- Molecule 6 is ZINC ION (three-letter code: ZN) (formula: Zn).

<b>Mol</b>	<b>Chain</b>	<b>Residues</b>	<b>Atoms</b>		<b>ZeroOcc</b>	<b>AltConf</b>
6	A	1	Total 1	Zn 1	0	0

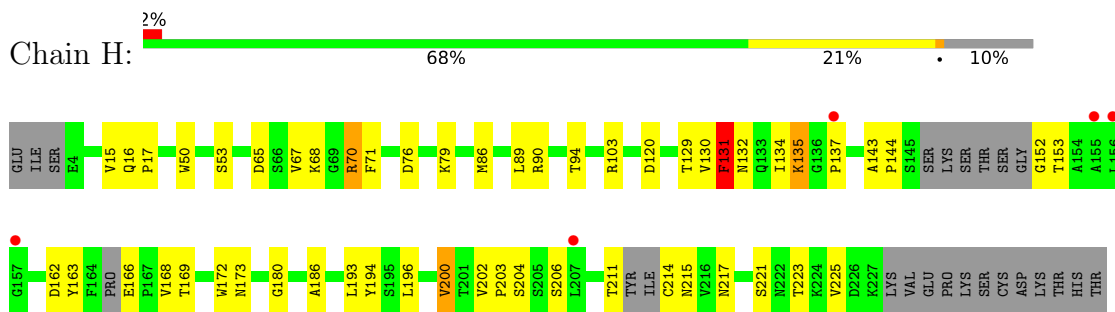
### 3 Residue-property plots [i](#)

These plots are drawn for all protein, RNA, DNA and oligosaccharide chains in the entry. The first graphic for a chain summarises the proportions of the various outlier classes displayed in the second graphic. The second graphic shows the sequence view annotated by issues in geometry and electron density. Residues are color-coded according to the number of geometric quality criteria for which they contain at least one outlier: green = 0, yellow = 1, orange = 2 and red = 3 or more. A red dot above a residue indicates a poor fit to the electron density ( $RSRZ > 2$ ). Stretches of 2 or more consecutive residues without any outlier are shown as a green connector. Residues present in the sample, but not in the model, are shown in grey.

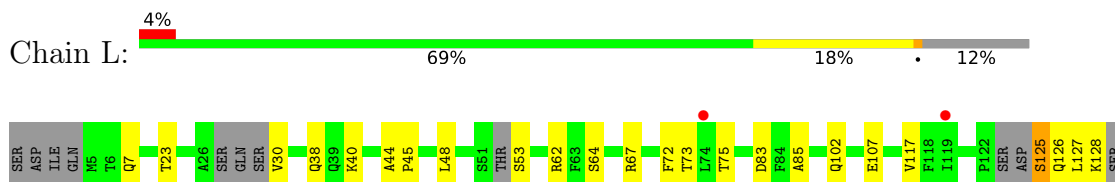
- Molecule 1: Insulin-degrading enzyme

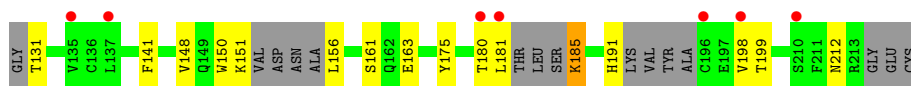


- Molecule 2: FAB Heavy chain with engineered elbow

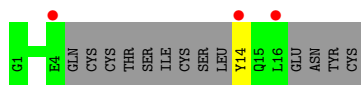


- Molecule 3: FAB light chain





- Molecule 4: Insulin



## 4 Data and refinement statistics

Property	Value	Source
Space group	P 2 21 21	Depositor
Cell constants a, b, c, $\alpha$ , $\beta$ , $\gamma$	75.69Å 109.22Å 263.40Å 90.00° 90.00° 90.00°	Depositor
Resolution (Å)	47.45 – 3.29 47.45 – 3.29	Depositor EDS
% Data completeness (in resolution range)	99.5 (47.45-3.29) 91.3 (47.45-3.29)	Depositor EDS
$R_{merge}$	0.10	Depositor
$R_{sym}$	(Not available)	Depositor
$\langle I/\sigma(I) \rangle$ <sup>1</sup>	4.74 (at 3.25Å)	Xtrriage
Refinement program	PHENIX 1.9_1692	Depositor
R, $R_{free}$	0.196 , 0.245 0.209 , 0.254	Depositor DCC
$R_{free}$ test set	1997 reflections (5.88%)	wwPDB-VP
Wilson B-factor (Å <sup>2</sup> )	74.2	Xtrriage
Anisotropy	0.693	Xtrriage
Bulk solvent $k_{sol}$ (e/Å <sup>3</sup> ), $B_{sol}$ (Å <sup>2</sup> )	0.28 , 51.8	EDS
L-test for twinning <sup>2</sup>	$\langle  L  \rangle = 0.49$ , $\langle L^2 \rangle = 0.32$	Xtrriage
Estimated twinning fraction	No twinning to report.	Xtrriage
$F_o, F_c$ correlation	0.91	EDS
Total number of atoms	10966	wwPDB-VP
Average B, all atoms (Å <sup>2</sup> )	85.0	wwPDB-VP

Xtrriage's analysis on translational NCS is as follows: *The largest off-origin peak in the Patterson function is 3.03% of the height of the origin peak. No significant pseudotranslation is detected.*

<sup>1</sup>Intensities estimated from amplitudes.

<sup>2</sup>Theoretical values of  $\langle |L| \rangle$ ,  $\langle L^2 \rangle$  for acentric reflections are 0.5, 0.333 respectively for untwinned datasets, and 0.375, 0.2 for perfectly twinned datasets.



## 5 Model quality [i](#)

### 5.1 Standard geometry [i](#)

Bond lengths and bond angles in the following residue types are not validated in this section: ZN, EPE

The Z score for a bond length (or angle) is the number of standard deviations the observed value is removed from the expected value. A bond length (or angle) with  $|Z| > 5$  is considered an outlier worth inspection. RMSZ is the root-mean-square of all Z scores of the bond lengths (or angles).

Mol	Chain	Bond lengths		Bond angles	
		RMSZ	# Z  >5	RMSZ	# Z  >5
1	A	0.23	0/8044	0.46	5/10881 (0.0%)
2	H	0.26	0/1664	0.59	4/2264 (0.2%)
3	L	0.27	0/1448	0.55	2/1959 (0.1%)
4	a	0.31	0/56	0.71	0/73
All	All	0.24	0/11212	0.50	11/15177 (0.1%)

There are no bond length outliers.

The worst 5 of 11 bond angle outliers are listed below:

Mol	Chain	Res	Type	Atoms	Z	Observed(°)	Ideal(°)
1	A	512	LYS	N-CA-CB	6.42	122.15	110.60
2	H	206	SER	CB-CA-C	-5.81	99.06	110.10
1	A	583	ALA	CB-CA-C	5.72	118.67	110.10
3	L	53	SER	N-CA-CB	5.56	118.84	110.50
2	H	131	PHE	CB-CA-C	-5.54	99.31	110.40

There are no chirality outliers.

There are no planarity outliers.

### 5.2 Too-close contacts [i](#)

In the following table, the Non-H and H(model) columns list the number of non-hydrogen atoms and hydrogen atoms in the chain respectively. The H(added) column lists the number of hydrogen atoms added and optimized by MolProbity. The Clashes column lists the number of clashes within the asymmetric unit, whereas Symm-Clashes lists symmetry-related clashes.

Mol	Chain	Non-H	H(model)	H(added)	Clashes	Symm-Clashes
1	A	7848	0	7786	77	0
2	H	1623	0	1547	53	0

*Continued on next page...*

Continued from previous page...

Mol	Chain	Non-H	H(model)	H(added)	Clashes	Symm-Clashes
3	L	1422	0	1354	27	0
4	a	57	0	58	0	0
5	A	15	0	17	0	0
6	A	1	0	0	0	0
All	All	10966	0	10762	156	0

The all-atom clashscore is defined as the number of clashes found per 1000 atoms (including hydrogen atoms). The all-atom clashscore for this structure is 7.

The worst 5 of 156 close contacts within the same asymmetric unit are listed below, sorted by their clash magnitude.

Atom-1	Atom-2	Interatomic distance (Å)	Clash overlap (Å)
2:H:163:TYR:CE1	2:H:168:VAL:HG23	1.69	1.26
3:L:128:LYS:O	3:L:131:THR:HG21	1.37	1.24
3:L:131:THR:N	3:L:185:LYS:HB2	1.54	1.21
2:H:131:PHE:CE2	2:H:134:ILE:HD11	1.87	1.10
2:H:131:PHE:O	2:H:131:PHE:CD1	2.06	1.09

There are no symmetry-related clashes.

## 5.3 Torsion angles [i](#)

### 5.3.1 Protein backbone [i](#)

In the following table, the Percentiles column shows the percent Ramachandran outliers of the chain as a percentile score with respect to all X-ray entries followed by that with respect to entries of similar resolution.

The Analysed column shows the number of residues for which the backbone conformation was analysed, and the total number of residues.

Mol	Chain	Analysed	Favoured	Allowed	Outliers	Percentiles	
1	A	955/990 (96%)	929 (97%)	26 (3%)	0	100	100
2	H	207/239 (87%)	192 (93%)	15 (7%)	0	100	100
3	L	174/216 (81%)	168 (97%)	6 (3%)	0	100	100
4	a	3/20 (15%)	2 (67%)	1 (33%)	0	100	100
All	All	1339/1465 (91%)	1291 (96%)	48 (4%)	0	100	100

There are no Ramachandran outliers to report.

### 5.3.2 Protein sidechains [i](#)

In the following table, the Percentiles column shows the percent sidechain outliers of the chain as a percentile score with respect to all X-ray entries followed by that with respect to entries of similar resolution.

The Analysed column shows the number of residues for which the sidechain conformation was analysed, and the total number of residues.

Mol	Chain	Analysed	Rotameric	Outliers	Percentiles
1	A	855/879 (97%)	851 (100%)	4 (0%)	88 93
2	H	176/202 (87%)	172 (98%)	4 (2%)	50 73
3	L	159/192 (83%)	155 (98%)	4 (2%)	47 72
4	a	6/19 (32%)	5 (83%)	1 (17%)	2 10
All	All	1196/1292 (93%)	1183 (99%)	13 (1%)	73 85

5 of 13 residues with a non-rotameric sidechain are listed below:

Mol	Chain	Res	Type
2	H	200	VAL
3	L	30	VAL
4	a	14	TYR
3	L	151	LYS
3	L	185	LYS

Sometimes sidechains can be flipped to improve hydrogen bonding and reduce clashes. All (2) such sidechains are listed below:

Mol	Chain	Res	Type
2	H	132	ASN
3	L	191	HIS

### 5.3.3 RNA [i](#)

There are no RNA molecules in this entry.

## 5.4 Non-standard residues in protein, DNA, RNA chains [i](#)

There are no non-standard protein/DNA/RNA residues in this entry.

## 5.5 Carbohydrates [i](#)

There are no monosaccharides in this entry.

## 5.6 Ligand geometry [i](#)

Of 2 ligands modelled in this entry, 1 is monoatomic - leaving 1 for Mogul analysis.

In the following table, the Counts columns list the number of bonds (or angles) for which Mogul statistics could be retrieved, the number of bonds (or angles) that are observed in the model and the number of bonds (or angles) that are defined in the Chemical Component Dictionary. The Link column lists molecule types, if any, to which the group is linked. The Z score for a bond length (or angle) is the number of standard deviations the observed value is removed from the expected value. A bond length (or angle) with  $|Z| > 2$  is considered an outlier worth inspection. RMSZ is the root-mean-square of all Z scores of the bond lengths (or angles).

Mol	Type	Chain	Res	Link	Bond lengths			Bond angles		
					Counts	RMSZ	# Z  > 2	Counts	RMSZ	# Z  > 2
5	EPE	A	2001	-	15,15,15	0.84	1 (6%)	18,20,20	1.87	5 (27%)

In the following table, the Chirals column lists the number of chiral outliers, the number of chiral centers analysed, the number of these observed in the model and the number defined in the Chemical Component Dictionary. Similar counts are reported in the Torsion and Rings columns. '-' means no outliers of that kind were identified.

Mol	Type	Chain	Res	Link	Chirals	Torsions	Rings
5	EPE	A	2001	-	-	3/9/19/19	0/1/1/1

All (1) bond length outliers are listed below:

Mol	Chain	Res	Type	Atoms	Z	Observed(Å)	Ideal(Å)
5	A	2001	EPE	C10-S	2.83	1.81	1.77

All (5) bond angle outliers are listed below:

Mol	Chain	Res	Type	Atoms	Z	Observed(°)	Ideal(°)
5	A	2001	EPE	C5-N4-C3	4.52	119.00	108.83
5	A	2001	EPE	C7-N4-C5	3.46	120.09	111.23
5	A	2001	EPE	C7-N4-C3	3.33	119.75	111.23
5	A	2001	EPE	O3S-S-C10	2.35	109.56	105.77
5	A	2001	EPE	O2S-S-C10	2.14	109.49	106.92

There are no chirality outliers.

All (3) torsion outliers are listed below:

Mol	Chain	Res	Type	Atoms
5	A	2001	EPE	C10-C9-N1-C2
5	A	2001	EPE	C8-C7-N4-C5
5	A	2001	EPE	C10-C9-N1-C6

There are no ring outliers.

No monomer is involved in short contacts.

## 5.7 Other polymers [i](#)

There are no such residues in this entry.

## 5.8 Polymer linkage issues [i](#)

There are no chain breaks in this entry.

## 6 Fit of model and data [i](#)

### 6.1 Protein, DNA and RNA chains [i](#)

In the following table, the column labelled ‘#RSRZ> 2’ contains the number (and percentage) of RSRZ outliers, followed by percent RSRZ outliers for the chain as percentile scores relative to all X-ray entries and entries of similar resolution. The OWAB column contains the minimum, median, 95<sup>th</sup> percentile and maximum values of the occupancy-weighted average B-factor per residue. The column labelled ‘Q< 0.9’ lists the number of (and percentage) of residues with an average occupancy less than 0.9.

Mol	Chain	Analysed	<RSRZ>	#RSRZ>2	OWAB(Å <sup>2</sup> )	Q<0.9
1	A	959/990 (96%)	-0.13	1 (0%) 95 96	45, 74, 107, 160	0
2	H	215/239 (89%)	0.21	5 (2%) 60 58	60, 99, 169, 187	0
3	L	190/216 (87%)	0.22	9 (4%) 31 29	60, 95, 171, 224	0
4	a	7/20 (35%)	1.93	3 (42%) 0 0	78, 104, 138, 158	0
All	All	1371/1465 (93%)	-0.02	18 (1%) 77 76	45, 78, 142, 224	0

The worst 5 of 18 RSRZ outliers are listed below:

Mol	Chain	Res	Type	RSRZ
2	H	156	LEU	7.3
4	a	4	GLU	5.4
3	L	210	SER	4.6
4	a	16	LEU	4.4
3	L	196	CYS	4.2

### 6.2 Non-standard residues in protein, DNA, RNA chains [i](#)

There are no non-standard protein/DNA/RNA residues in this entry.

### 6.3 Carbohydrates [i](#)

There are no monosaccharides in this entry.

### 6.4 Ligands [i](#)

In the following table, the Atoms column lists the number of modelled atoms in the group and the number defined in the chemical component dictionary. The B-factors column lists the minimum, median, 95<sup>th</sup> percentile and maximum values of B factors of atoms in the group. The column labelled ‘Q< 0.9’ lists the number of atoms with occupancy less than 0.9.

Mol	Type	Chain	Res	Atoms	RSCC	RSR	B-factors( $\text{\AA}^2$ )	Q<0.9
5	EPE	A	2001	15/15	0.84	0.36	100,109,116,122	0
6	ZN	A	2002	1/1	0.99	0.19	67,67,67,67	0

## 6.5 Other polymers [i](#)

There are no such residues in this entry.