



Full wwPDB X-ray Structure Validation Report ⓘ

May 25, 2020 – 06:40 am BST

PDB ID : 1CI8
Title : ESTERASE ESTB FROM BURKHOLDERIA GLADIOLI: AN ESTERASE WITH (BETA)-LACTAMASE FOLD.
Authors : Wagner, U.G.; Petersen, E.I.; Schwab, H.; Kratky, C.
Deposited on : 1999-04-08
Resolution : 2.00 Å(reported)

This is a Full wwPDB X-ray Structure Validation Report for a publicly released PDB entry.

We welcome your comments at validation@mail.wwpdb.org

A user guide is available at

<https://www.wwpdb.org/validation/2017/XrayValidationReportHelp>

with specific help available everywhere you see the ⓘ symbol.

The following versions of software and data (see [references ⓘ](#)) were used in the production of this report:

MolProbity : 4.02b-467
Mogul : 1.8.5 (274361), CSD as541be (2020)
Xtrriage (Phenix) : **NOT EXECUTED**
EDS : **NOT EXECUTED**
Percentile statistics : 20191225.v01 (using entries in the PDB archive December 25th 2019)
Ideal geometry (proteins) : Engh & Huber (2001)
Ideal geometry (DNA, RNA) : Parkinson et al. (1996)
Validation Pipeline (wwPDB-VP) : 2.11

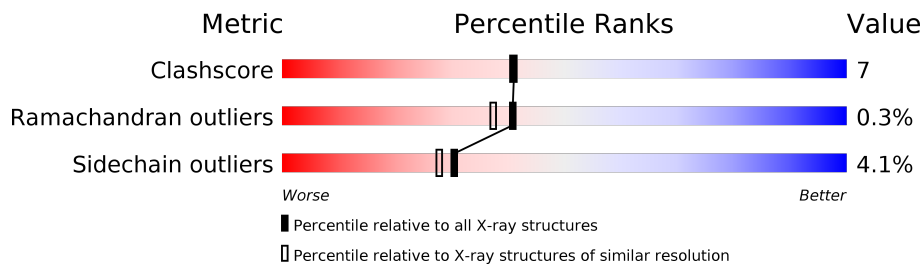
1 Overall quality at a glance

The following experimental techniques were used to determine the structure:

X-RAY DIFFRACTION

The reported resolution of this entry is 2.00 Å.

Percentile scores (ranging between 0-100) for global validation metrics of the entry are shown in the following graphic. The table shows the number of entries on which the scores are based.



Metric	Whole archive (#Entries)	Similar resolution (#Entries, resolution range(Å))
Clashscore	141614	9178 (2.00-2.00)
Ramachandran outliers	138981	9054 (2.00-2.00)
Sidechain outliers	138945	9053 (2.00-2.00)

The table below summarises the geometric issues observed across the polymeric chains and their fit to the electron density. The red, orange, yellow and green segments on the lower bar indicate the fraction of residues that contain outliers for ≥ 3 , 2, 1 and 0 types of geometric quality criteria respectively. A grey segment represents the fraction of residues that are not modelled. The numeric value for each fraction is indicated below the corresponding segment, with a dot representing fractions $\leq 5\%$.

Note EDS was not executed.

Mol	Chain	Length	Quality of chain
1	A	392	
1	B	392	

2 Entry composition [i](#)

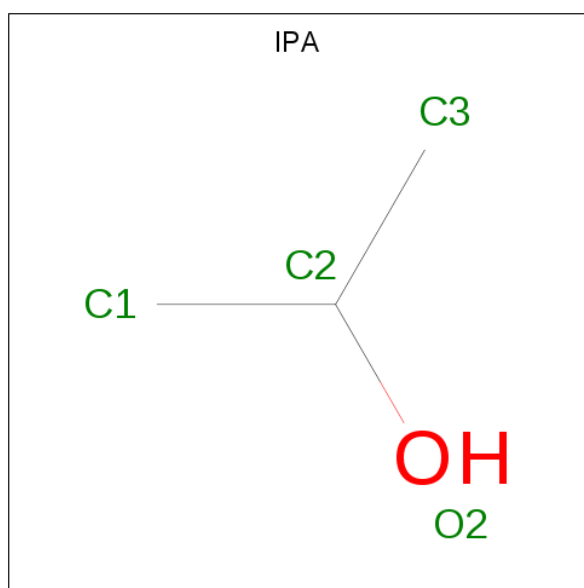
There are 3 unique types of molecules in this entry. The entry contains 6044 atoms, of which 0 are hydrogens and 0 are deuteriums.

In the tables below, the ZeroOcc column contains the number of atoms modelled with zero occupancy, the AltConf column contains the number of residues with at least one atom in alternate conformation and the Trace column contains the number of residues modelled with at most 2 atoms.

- Molecule 1 is a protein called PROTEIN (CARBOXYLESTERASE).

Mol	Chain	Residues	Atoms					ZeroOcc	AltConf	Trace
			Total	C	N	O	S			
1	A	377	Total 2839	C 1794	N 514	O 524	S 7	0	2	0
1	B	377	Total 2836	C 1793	N 514	O 522	S 7	0	1	0

- Molecule 2 is ISOPROPYL ALCOHOL (three-letter code: IPA) (formula: C₃H₈O).



Mol	Chain	Residues	Atoms			ZeroOcc	AltConf
			Total	C	O		
2	A	1	Total 4	C 3	O 1	0	0
2	A	1	Total 4	C 3	O 1	0	0
2	A	1	Total 4	C 3	O 1	0	0
2	B	1	Total 4	C 3	O 1	0	0

- Molecule 3 is water.


Mol	Chain	Residues	Atoms		ZeroOcc	AltConf
3	A	183	Total 183	O 183	0	0
3	B	170	Total 170	O 170	0	0

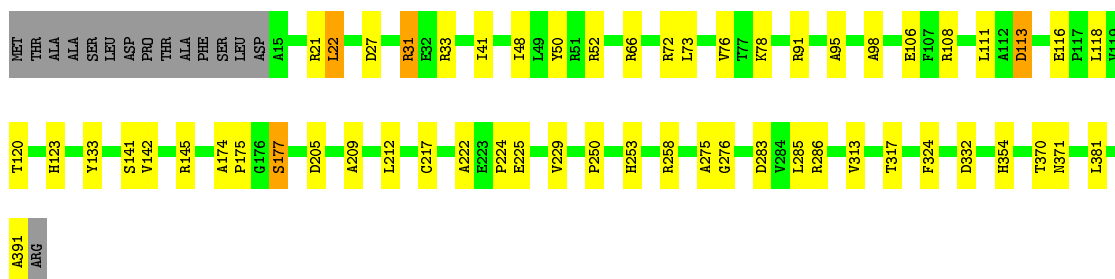
3 Residue-property plots [i](#)

These plots are drawn for all protein, RNA and DNA chains in the entry. The first graphic for a chain summarises the proportions of the various outlier classes displayed in the second graphic. The second graphic shows the sequence view annotated by issues in geometry. Residues are color-coded according to the number of geometric quality criteria for which they contain at least one outlier: green = 0, yellow = 1, orange = 2 and red = 3 or more. Stretches of 2 or more consecutive residues without any outlier are shown as a green connector. Residues present in the sample, but not in the model, are shown in grey.


Note EDS was not executed.

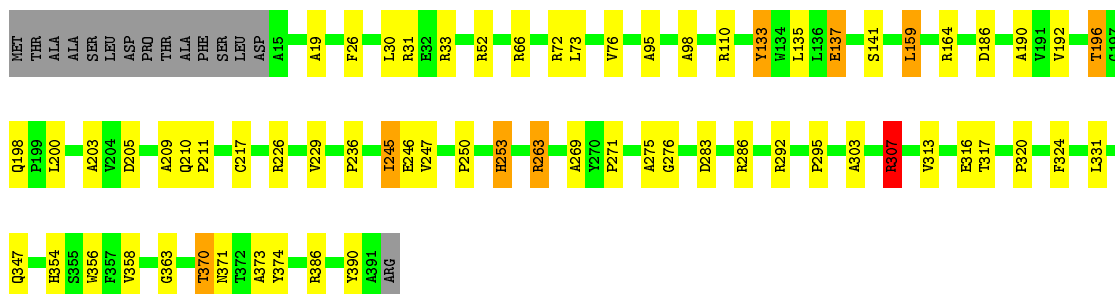
- Molecule 1: PROTEIN (CARBOXYLESTERASE)

Chain A: 



- Molecule 1: PROTEIN (CARBOXYLESTERASE)

Chain B: 



4 Data and refinement statistics

Xtrriage (Phenix) and EDS were not executed - this section is therefore incomplete.

Property	Value	Source
Space group	P 3 2 1	Depositor
Cell constants a, b, c, α , β , γ	82.92Å 82.92Å 193.46Å 90.00° 90.00° 120.00°	Depositor
Resolution (Å)	15.00 – 2.00	Depositor
% Data completeness (in resolution range)	83.0 (15.00-2.00)	Depositor
R_{merge}	0.05	Depositor
R_{sym}	(Not available)	Depositor
Refinement program	X-PLOR 3.851	Depositor
R, R_{free}	0.184 , 0.247	Depositor
Estimated twinning fraction	No twinning to report.	Xtrriage
Total number of atoms	6044	wwPDB-VP
Average B, all atoms (Å ²)	11.0	wwPDB-VP

5 Model quality [i](#)

5.1 Standard geometry [i](#)

Bond lengths and bond angles in the following residue types are not validated in this section: IPA

The Z score for a bond length (or angle) is the number of standard deviations the observed value is removed from the expected value. A bond length (or angle) with $|Z| > 5$ is considered an outlier worth inspection. RMSZ is the root-mean-square of all Z scores of the bond lengths (or angles).

Mol	Chain	Bond lengths		Bond angles	
		RMSZ	# Z >5	RMSZ	# Z >5
1	A	0.55	0/2916	0.78	4/3975 (0.1%)
1	B	0.57	0/2908	0.81	3/3964 (0.1%)
All	All	0.56	0/5824	0.79	7/7939 (0.1%)

Chiral center outliers are detected by calculating the chiral volume of a chiral center and verifying if the center is modelled as a planar moiety or with the opposite hand. A planarity outlier is detected by checking planarity of atoms in a peptide group, atoms in a mainchain group or atoms of a sidechain that are expected to be planar.

Mol	Chain	#Chirality outliers	#Planarity outliers
1	B	0	1

There are no bond length outliers.

All (7) bond angle outliers are listed below:

Mol	Chain	Res	Type	Atoms	Z	Observed($^{\circ}$)	Ideal($^{\circ}$)
1	B	307	ARG	NE-CZ-NH1	9.46	125.03	120.30
1	A	31	ARG	NE-CZ-NH2	-8.86	115.87	120.30
1	A	31	ARG	NE-CZ-NH1	6.36	123.48	120.30
1	A	276	GLY	N-CA-C	5.97	128.03	113.10
1	A	91	ARG	NE-CZ-NH1	-5.39	117.61	120.30
1	B	110	ARG	NE-CZ-NH2	-5.12	117.74	120.30
1	B	276	GLY	N-CA-C	5.11	125.86	113.10

There are no chirality outliers.

All (1) planarity outliers are listed below:

Mol	Chain	Res	Type	Group
1	B	263	ARG	Sidechain

5.2 Too-close contacts i

In the following table, the Non-H and H(model) columns list the number of non-hydrogen atoms and hydrogen atoms in the chain respectively. The H(added) column lists the number of hydrogen atoms added and optimized by MolProbity. The Clashes column lists the number of clashes within the asymmetric unit, whereas Symm-Clashes lists symmetry related clashes.

Mol	Chain	Non-H	H(model)	H(added)	Clashes	Symm-Clashes
1	A	2839	0	2800	38	0
1	B	2836	0	2800	43	0
2	A	12	0	24	0	0
2	B	4	0	8	0	0
3	A	183	0	0	4	0
3	B	170	0	0	7	0
All	All	6044	0	5632	80	0

The all-atom clashscore is defined as the number of clashes found per 1000 atoms (including hydrogen atoms). The all-atom clashscore for this structure is 7.

All (80) close contacts within the same asymmetric unit are listed below, sorted by their clash magnitude.

Atom-1	Atom-2	Interatomic distance (Å)	Clash overlap (Å)
1:B:33:ARG:HH21	1:B:236:PRO:HB2	1.45	0.81
1:B:307:ARG:HH11	1:B:307:ARG:HG3	1.52	0.74
1:A:41:ILE:HG21	1:A:285:LEU:HD22	1.71	0.72
1:B:292:ARG:HG3	1:B:358:VAL:CG1	2.20	0.71
1:B:286:ARG:NH1	3:B:559:HOH:O	2.25	0.70
1:B:196:THR:HG22	1:B:198:GLN:H	1.54	0.70
1:B:295:PRO:HG3	3:B:560:HOH:O	1.92	0.69
1:B:316:GLU:HG2	1:B:320:PRO:HA	1.76	0.67
1:A:118:LEU:HB3	3:A:538:HOH:O	1.95	0.67
1:A:174:ALA:O	1:A:177:SER:HB3	1.94	0.67
1:B:196:THR:HG21	1:B:203:ALA:HB2	1.77	0.66
1:A:313:VAL:HG12	1:A:332:ASP:HB2	1.77	0.66
1:B:19:ALA:HB2	3:B:396:HOH:O	1.95	0.65
1:B:354:HIS:HD2	1:B:370:THR:H	1.43	0.65
1:A:72:ARG:O	1:A:354:HIS:HE1	1.80	0.64
1:B:210:GLN:HB3	1:B:211:PRO:HD3	1.79	0.64
1:B:263:ARG:HD2	1:B:269:ALA:HB1	1.80	0.64
1:B:292:ARG:HG3	1:B:358:VAL:HG11	1.78	0.64
1:A:27:ASP:HB3	1:A:31:ARG:NH2	2.13	0.64
1:B:33:ARG:NH2	1:B:236:PRO:HB2	2.12	0.64
1:B:133:TYR:HB3	1:B:135:LEU:HG	1.80	0.63

Continued on next page...

Continued from previous page...

Atom-1	Atom-2	Interatomic distance (Å)	Clash overlap (Å)
1:A:217[A]:CYS:SG	1:A:283:ASP:HB3	2.38	0.63
1:B:317:THR:HG21	1:B:324:PHE:HB2	1.82	0.61
1:B:72:ARG:O	1:B:354:HIS:HE1	1.83	0.60
1:B:192:VAL:O	1:B:196:THR:HB	2.02	0.59
1:A:120:THR:H	1:A:123:HIS:HD2	1.51	0.59
1:B:205:ASP:HA	1:B:209:ALA:HB3	1.85	0.58
1:B:347:GLN:HG3	1:B:356:TRP:O	2.03	0.58
1:B:303:ALA:O	1:B:307:ARG:HG3	2.04	0.58
1:A:73:LEU:HB3	1:A:76:VAL:HB	1.86	0.57
1:A:48:ILE:HB	1:B:66:ARG:NH2	2.21	0.56
1:A:120:THR:H	1:A:123:HIS:CD2	2.24	0.56
1:B:73:LEU:HB3	1:B:76:VAL:HB	1.88	0.55
1:A:142:VAL:HG22	1:A:145:ARG:HH21	1.71	0.54
1:A:205:ASP:HA	1:A:209:ALA:HB3	1.91	0.53
1:A:217[A]:CYS:SG	1:A:283:ASP:CB	2.96	0.52
1:A:111:LEU:HB2	1:A:113:ASP:OD1	2.10	0.52
1:A:142:VAL:HG22	1:A:145:ARG:NH2	2.25	0.52
1:B:245:ILE:HD12	1:B:247:VAL:HG22	1.91	0.52
1:B:196:THR:CG2	1:B:198:GLN:H	2.20	0.51
1:B:263:ARG:HG3	3:B:512:HOH:O	2.10	0.51
1:A:313:VAL:CG1	1:A:332:ASP:HB2	2.41	0.49
1:B:363:GLY:HA2	3:B:460:HOH:O	2.12	0.49
1:A:354:HIS:HD2	1:A:370:THR:H	1.58	0.49
1:B:307:ARG:NH1	1:B:307:ARG:HG3	2.23	0.49
1:B:245:ILE:HD13	1:B:246:GLU:N	2.29	0.48
1:B:226:ARG:NH2	3:B:502:HOH:O	2.44	0.47
1:B:217[B]:CYS:SG	1:B:283:ASP:HB3	2.54	0.47
1:B:137:GLU:HB3	1:B:141:SER:HB3	1.97	0.47
1:A:217[A]:CYS:SG	1:A:283:ASP:OD2	2.67	0.47
1:A:108:ARG:HD3	1:A:116:GLU:OE1	2.15	0.47
1:B:200:LEU:HD23	1:B:271:PRO:HB2	1.97	0.46
1:A:21:ARG:NE	1:A:391:ALA:HB3	2.30	0.46
1:A:212:LEU:O	1:A:286:ARG:HD3	2.16	0.46
1:A:229:VAL:O	1:A:371:ASN:HB2	2.15	0.46
1:B:95:ALA:HB3	1:B:98:ALA:HB2	1.96	0.46
1:B:354:HIS:CD2	1:B:370:THR:H	2.30	0.45
1:A:225:GLU:HB2	3:A:488:HOH:O	2.16	0.45
1:B:229:VAL:O	1:B:371:ASN:HB2	2.16	0.45
1:A:317:THR:HG21	1:A:324:PHE:HB2	1.98	0.45
1:B:26:PHE:O	1:B:30:LEU:HG	2.17	0.45
1:B:386:ARG:O	1:B:390:TYR:HD2	2.00	0.45

Continued on next page...

Continued from previous page...

Atom-1	Atom-2	Interatomic distance (Å)	Clash overlap (Å)
1:A:52:ARG:NH1	1:A:52:ARG:HG3	2.32	0.44
1:B:373:ALA:HA	1:B:374:TYR:HA	1.78	0.44
1:A:250:PRO:HG2	1:A:253:HIS:CD2	2.53	0.44
1:A:95:ALA:HB3	1:A:98:ALA:HB2	2.01	0.43
1:B:159:LEU:HD13	1:B:190:ALA:HB2	2.00	0.43
1:B:245:ILE:HD12	1:B:247:VAL:CG2	2.49	0.43
1:A:22:LEU:HA	1:A:22:LEU:HD12	1.87	0.42
1:A:41:ILE:HA	1:A:50:TYR:O	2.20	0.42
1:A:52:ARG:HH11	1:A:52:ARG:HG3	1.84	0.42
1:B:263:ARG:HD2	1:B:269:ALA:CB	2.47	0.42
1:A:52:ARG:HG3	3:B:496:HOH:O	2.19	0.42
1:A:275:ALA:HB2	3:A:535:HOH:O	2.20	0.42
1:A:66:ARG:HD3	1:A:66:ARG:HA	1.93	0.41
1:B:250:PRO:O	1:B:253:HIS:HB2	2.20	0.41
1:A:27:ASP:HB3	1:A:31:ARG:HH22	1.84	0.41
1:A:222:ALA:C	1:A:224:PRO:HD3	2.41	0.41
1:A:118:LEU:HA	1:A:118:LEU:HD23	1.85	0.41
1:A:78:LYS:HD3	3:A:536:HOH:O	2.21	0.41

There are no symmetry-related clashes.

5.3 Torsion angles [i](#)

5.3.1 Protein backbone [i](#)

In the following table, the Percentiles column shows the percent Ramachandran outliers of the chain as a percentile score with respect to all X-ray entries followed by that with respect to entries of similar resolution.

The Analysed column shows the number of residues for which the backbone conformation was analysed, and the total number of residues.

Mol	Chain	Analysed	Favoured	Allowed	Outliers	Percentiles	
1	A	377/392 (96%)	364 (97%)	12 (3%)	1 (0%)	41	37
1	B	376/392 (96%)	364 (97%)	11 (3%)	1 (0%)	41	37
All	All	753/784 (96%)	728 (97%)	23 (3%)	2 (0%)	41	37

All (2) Ramachandran outliers are listed below:

Mol	Chain	Res	Type
1	A	141	SER
1	B	275	ALA

5.3.2 Protein sidechains [i](#)

In the following table, the Percentiles column shows the percent sidechain outliers of the chain as a percentile score with respect to all X-ray entries followed by that with respect to entries of similar resolution.

The Analysed column shows the number of residues for which the sidechain conformation was analysed, and the total number of residues.

Mol	Chain	Analysed	Rotameric	Outliers	Percentiles	
1	A	280/290 (97%)	271 (97%)	9 (3%)	39	38
1	B	279/290 (96%)	265 (95%)	14 (5%)	24	20
All	All	559/580 (96%)	536 (96%)	23 (4%)	30	28

All (23) residues with a non-rotameric sidechain are listed below:

Mol	Chain	Res	Type
1	A	22	LEU
1	A	33	ARG
1	A	106	GLU
1	A	113	ASP
1	A	133	TYR
1	A	175	PRO
1	A	177	SER
1	A	258	ARG
1	A	381	LEU
1	B	31	ARG
1	B	52	ARG
1	B	133	TYR
1	B	137	GLU
1	B	159	LEU
1	B	164	ARG
1	B	186	ASP
1	B	196	THR
1	B	245	ILE
1	B	253	HIS
1	B	307	ARG
1	B	313	VAL
1	B	331	LEU

Continued on next page...

Continued from previous page...

Mol	Chain	Res	Type
1	B	370	THR

Some sidechains can be flipped to improve hydrogen bonding and reduce clashes. All (7) such sidechains are listed below:

Mol	Chain	Res	Type
1	A	123	HIS
1	A	210	GLN
1	A	253	HIS
1	A	354	HIS
1	B	28	GLN
1	B	341	GLN
1	B	354	HIS

5.3.3 RNA [i](#)

There are no RNA molecules in this entry.

5.4 Non-standard residues in protein, DNA, RNA chains [i](#)

There are no non-standard protein/DNA/RNA residues in this entry.

5.5 Carbohydrates [i](#)

There are no carbohydrates in this entry.

5.6 Ligand geometry [i](#)

4 ligands are modelled in this entry.

In the following table, the Counts columns list the number of bonds (or angles) for which Mogul statistics could be retrieved, the number of bonds (or angles) that are observed in the model and the number of bonds (or angles) that are defined in the Chemical Component Dictionary. The Link column lists molecule types, if any, to which the group is linked. The Z score for a bond length (or angle) is the number of standard deviations the observed value is removed from the expected value. A bond length (or angle) with $|Z| > 2$ is considered an outlier worth inspection. RMSZ is the root-mean-square of all Z scores of the bond lengths (or angles).

Mol	Type	Chain	Res	Link	Bond lengths			Bond angles		
					Counts	RMSZ	$\# Z > 2$	Counts	RMSZ	$\# Z > 2$
2	IPA	A	394	-	3,3,3	0.49	0	3,3,3	0.13	0

Mol	Type	Chain	Res	Link	Bond lengths			Bond angles		
					Counts	RMSZ	# Z > 2	Counts	RMSZ	# Z > 2
2	IPA	A	395	-	3,3,3	0.46	0	3,3,3	0.17	0
2	IPA	A	393	-	3,3,3	0.60	0	3,3,3	0.20	0
2	IPA	B	393	-	3,3,3	0.58	0	3,3,3	0.55	0

There are no bond length outliers.

There are no bond angle outliers.

There are no chirality outliers.

There are no torsion outliers.

There are no ring outliers.

No monomer is involved in short contacts.

5.7 Other polymers [i](#)

There are no such residues in this entry.

5.8 Polymer linkage issues [i](#)

There are no chain breaks in this entry.

6 Fit of model and data

6.1 Protein, DNA and RNA chains

EDS was not executed - this section is therefore empty.

6.2 Non-standard residues in protein, DNA, RNA chains

EDS was not executed - this section is therefore empty.

6.3 Carbohydrates

EDS was not executed - this section is therefore empty.

6.4 Ligands

EDS was not executed - this section is therefore empty.

6.5 Other polymers

EDS was not executed - this section is therefore empty.