



Full wwPDB X-ray Structure Validation Report ⓘ

Sep 18, 2024 – 10:07 AM EDT

PDB ID : 9CD7
Title : FGFR3 Kinase Domain with Inhibitor TYRA-300
Authors : Hoffman, I.H.; Nelson, K.J.; Rideout, M.C.; Nix, J.C.; Frye, C.; Bensen, D.C.;
Hudkins, R.L.
Deposited on : 2024-06-24
Resolution : 2.53 Å(reported)

This is a Full wwPDB X-ray Structure Validation Report for a publicly released PDB entry.

We welcome your comments at validation@mail.wwpdb.org

A user guide is available at

<https://www.wwpdb.org/validation/2017/XrayValidationReportHelp>

with specific help available everywhere you see the ⓘ symbol.

The types of validation reports are described at

<http://www.wwpdb.org/validation/2017/FAQs#types>.

The following versions of software and data (see [references ⓘ](#)) were used in the production of this report:

MolProbity : 4.02b-467
Mogul : 2022.3.0, CSD as543be (2022)
Xtriage (Phenix) : 1.20.1
EDS : 3.0
buster-report : 1.1.7 (2018)
Percentile statistics : 20231227.v01 (using entries in the PDB archive December 27th 2023)
CCP4 : 9.0.002 (Gargrove)
Density-Fitness : 1.0.11
Ideal geometry (proteins) : Engh & Huber (2001)
Ideal geometry (DNA, RNA) : Parkinson et al. (1996)
Validation Pipeline (wwPDB-VP) : 2.38.3

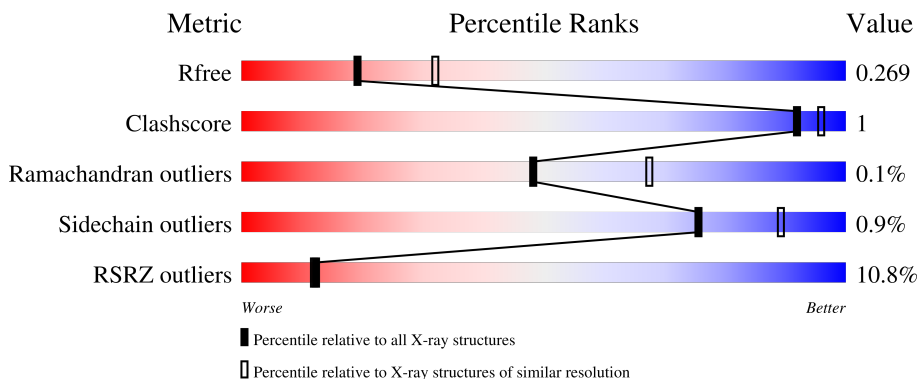
1 Overall quality at a glance

The following experimental techniques were used to determine the structure:

X-RAY DIFFRACTION

The reported resolution of this entry is 2.53 Å.

Percentile scores (ranging between 0-100) for global validation metrics of the entry are shown in the following graphic. The table shows the number of entries on which the scores are based.



Metric	Whole archive (#Entries)	Similar resolution (#Entries, resolution range(Å))
R_{free}	164625	6935 (2.54-2.50)
Clashscore	180529	7778 (2.54-2.50)
Ramachandran outliers	177936	7674 (2.54-2.50)
Sidechain outliers	177891	7676 (2.54-2.50)
RSRZ outliers	164620	6935 (2.54-2.50)

The table below summarises the geometric issues observed across the polymeric chains and their fit to the electron density. The red, orange, yellow and green segments of the lower bar indicate the fraction of residues that contain outliers for ≥ 3 , 2, 1 and 0 types of geometric quality criteria respectively. A grey segment represents the fraction of residues that are not modelled. The numeric value for each fraction is indicated below the corresponding segment, with a dot representing fractions $\leq 5\%$. The upper red bar (where present) indicates the fraction of residues that have poor fit to the electron density. The numeric value is given above the bar.

Mol	Chain	Length	Quality of chain
1	A	312	
1	B	312	
1	C	312	

2 Entry composition [i](#)

There are 5 unique types of molecules in this entry. The entry contains 6934 atoms, of which 0 are hydrogens and 0 are deuteriums.

In the tables below, the ZeroOcc column contains the number of atoms modelled with zero occupancy, the AltConf column contains the number of residues with at least one atom in alternate conformation and the Trace column contains the number of residues modelled with at most 2 atoms.

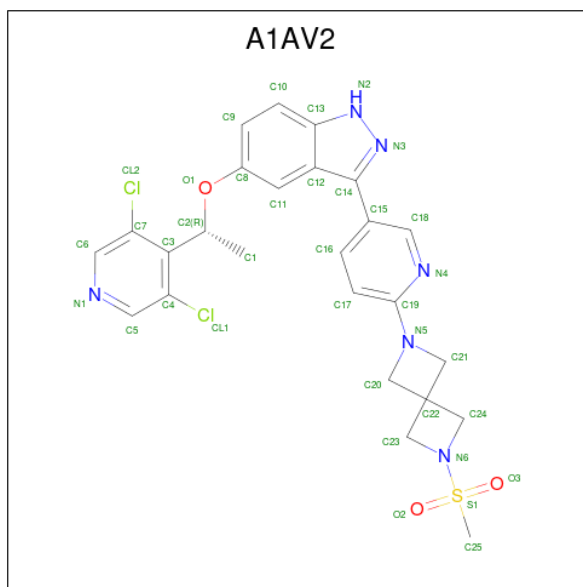
- Molecule 1 is a protein called Fibroblast growth factor receptor 3.

Mol	Chain	Residues	Atoms					ZeroOcc	AltConf	Trace
			Total	C	N	O	S			
1	A	276	2169	1388	372	392	17	0	0	0
1	B	278	2204	1410	380	397	17	0	0	0
1	C	278	2204	1410	380	397	17	0	0	0

There are 9 discrepancies between the modelled and reference sequences:

Chain	Residue	Modelled	Actual	Comment	Reference
A	482	ALA	CYS	engineered mutation	UNP P22607
A	582	SER	CYS	engineered mutation	UNP P22607
A	650	GLU	LYS	engineered mutation	UNP P22607
B	482	ALA	CYS	engineered mutation	UNP P22607
B	582	SER	CYS	engineered mutation	UNP P22607
B	650	GLU	LYS	engineered mutation	UNP P22607
C	482	ALA	CYS	engineered mutation	UNP P22607
C	582	SER	CYS	engineered mutation	UNP P22607
C	650	GLU	LYS	engineered mutation	UNP P22607

- Molecule 2 is (3P)-5-[(1R)-1-(3,5-dichloropyridin-4-yl)ethoxy]-3-{6-[6-(methanesulfonyl)-2,6-diazaspiro[3.3]heptan-2-yl]pyridin-3-yl}-1H-indazole (three-letter code: A1AV2) (formula: C₂₅H₂₄Cl₂N₆O₃S) (labeled as "Ligand of Interest" by depositor).



Mol	Chain	Residues	Atoms					ZeroOcc	AltConf	
			Total	C	Cl	N	O			S
2	A	1	Total	C	Cl	N	O	S	0	0
			37	25	2	6	3	1		
2	B	1	Total	C	Cl	N	O	S	0	0
			37	25	2	6	3	1		
2	C	1	Total	C	Cl	N	O	S	0	0
			37	25	2	6	3	1		

- Molecule 3 is GLYCEROL (three-letter code: GOL) (formula: C₃H₈O₃).



Mol	Chain	Residues	Atoms			ZeroOcc	AltConf
			Total	C	O		
3	A	1	Total	C	O	0	0
			6	3	3		

Continued on next page...

Continued from previous page...

Mol	Chain	Residues	Atoms			ZeroOcc	AltConf
3	A	1	Total 6	C 3	O 3	0	0
3	A	1	Total 6	C 3	O 3	0	0
3	A	1	Total 6	C 3	O 3	0	0
3	B	1	Total 6	C 3	O 3	0	0
3	B	1	Total 6	C 3	O 3	0	0
3	B	1	Total 6	C 3	O 3	0	0
3	B	1	Total 6	C 3	O 3	0	0
3	B	1	Total 6	C 3	O 3	0	0
3	B	1	Total 6	C 3	O 3	0	0
3	B	1	Total 6	C 3	O 3	0	0
3	C	1	Total 6	C 3	O 3	0	0
3	C	1	Total 6	C 3	O 3	0	0
3	C	1	Total 6	C 3	O 3	0	0
3	C	1	Total 6	C 3	O 3	0	0
3	C	1	Total 6	C 3	O 3	0	0
3	C	1	Total 6	C 3	O 3	0	0

- Molecule 4 is SULFATE ION (three-letter code: SO4) (formula: O₄S).



Mol	Chain	Residues	Atoms	ZeroOcc	AltConf
4	B	1	Total O S 5 4 1	0	0
4	B	1	Total O S 5 4 1	0	0
4	C	1	Total O S 5 4 1	0	0
4	C	1	Total O S 5 4 1	0	0

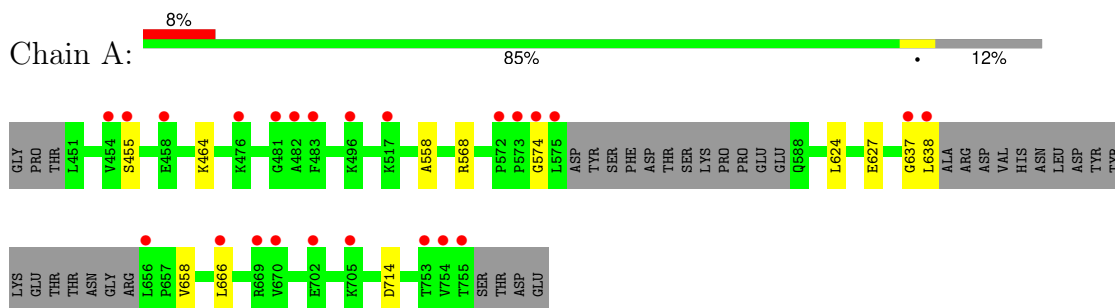
- Molecule 5 is water.

Mol	Chain	Residues	Atoms	ZeroOcc	AltConf
5	A	55	Total O 55 55	0	0
5	B	46	Total O 46 46	0	0
5	C	29	Total O 29 29	0	0

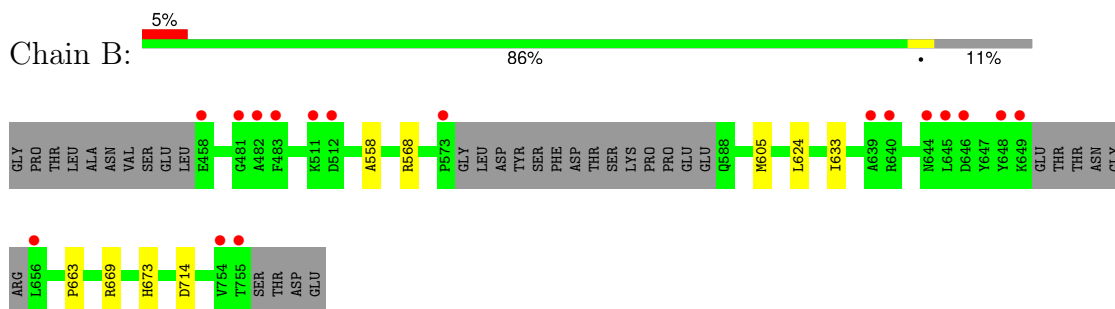
3 Residue-property plots [i](#)

These plots are drawn for all protein, RNA, DNA and oligosaccharide chains in the entry. The first graphic for a chain summarises the proportions of the various outlier classes displayed in the second graphic. The second graphic shows the sequence view annotated by issues in geometry and electron density. Residues are color-coded according to the number of geometric quality criteria for which they contain at least one outlier: green = 0, yellow = 1, orange = 2 and red = 3 or more. A red dot above a residue indicates a poor fit to the electron density ($RSRZ > 2$). Stretches of 2 or more consecutive residues without any outlier are shown as a green connector. Residues present in the sample, but not in the model, are shown in grey.

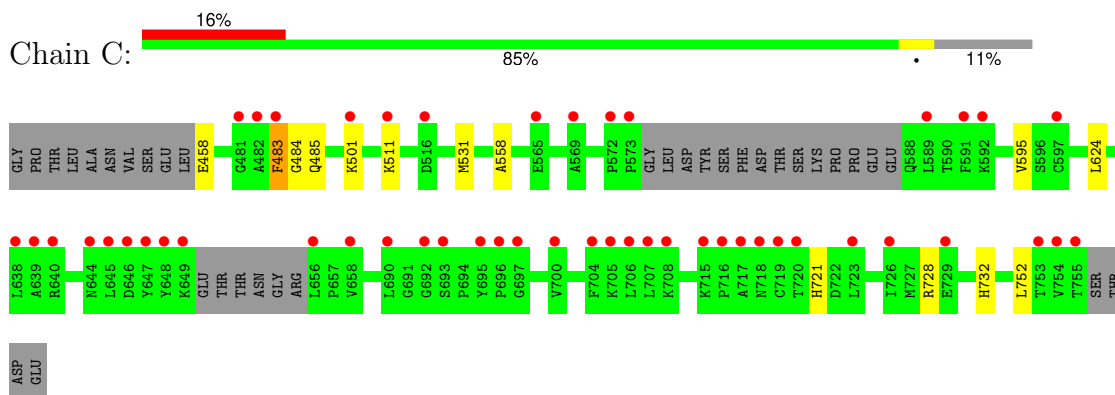
- Molecule 1: Fibroblast growth factor receptor 3



- Molecule 1: Fibroblast growth factor receptor 3



- Molecule 1: Fibroblast growth factor receptor 3



4 Data and refinement statistics

Property	Value	Source
Space group	C 1 2 1	Depositor
Cell constants a, b, c, α , β , γ	180.69Å 55.59Å 138.67Å 90.00° 127.45° 90.00°	Depositor
Resolution (Å)	40.00 – 2.53 40.00 – 2.53	Depositor EDS
% Data completeness (in resolution range)	99.8 (40.00-2.53) 99.8 (40.00-2.53)	Depositor EDS
R_{merge}	0.44	Depositor
R_{sym}	(Not available)	Depositor
$\langle I/\sigma(I) \rangle$ ¹	1.22 (at 2.54Å)	Xtrriage
Refinement program	REFMAC 5.8.0425	Depositor
R, R_{free}	0.229 , 0.267 0.233 , 0.269	Depositor DCC
R_{free} test set	1659 reflections (4.49%)	wwPDB-VP
Wilson B-factor (Å ²)	37.0	Xtrriage
Anisotropy	0.411	Xtrriage
Bulk solvent k_{sol} (e/Å ³), B_{sol} (Å ²)	0.35 , 38.6	EDS
L-test for twinning ²	$\langle L \rangle = 0.50$, $\langle L^2 \rangle = 0.32$	Xtrriage
Estimated twinning fraction	No twinning to report.	Xtrriage
F_o, F_c correlation	0.92	EDS
Total number of atoms	6934	wwPDB-VP
Average B, all atoms (Å ²)	55.0	wwPDB-VP

Xtrriage's analysis on translational NCS is as follows: *The largest off-origin peak in the Patterson function is 4.71% of the height of the origin peak. No significant pseudotranslation is detected.*

¹Intensities estimated from amplitudes.

²Theoretical values of $\langle |L| \rangle$, $\langle L^2 \rangle$ for acentric reflections are 0.5, 0.333 respectively for untwinned datasets, and 0.375, 0.2 for perfectly twinned datasets.

5 Model quality [i](#)

5.1 Standard geometry [i](#)

Bond lengths and bond angles in the following residue types are not validated in this section: GOL, A1AV2, SO4

The Z score for a bond length (or angle) is the number of standard deviations the observed value is removed from the expected value. A bond length (or angle) with $|Z| > 5$ is considered an outlier worth inspection. RMSZ is the root-mean-square of all Z scores of the bond lengths (or angles).

Mol	Chain	Bond lengths		Bond angles	
		RMSZ	# Z >5	RMSZ	# Z >5
1	A	0.31	0/2213	0.62	0/2992
1	B	0.31	0/2251	0.61	0/3043
1	C	0.31	0/2251	0.61	1/3043 (0.0%)
All	All	0.31	0/6715	0.61	1/9078 (0.0%)

There are no bond length outliers.

All (1) bond angle outliers are listed below:

Mol	Chain	Res	Type	Atoms	Z	Observed(°)	Ideal(°)
1	C	531	MET	CG-SD-CE	6.07	109.91	100.20

There are no chirality outliers.

There are no planarity outliers.

5.2 Too-close contacts [i](#)

In the following table, the Non-H and H(model) columns list the number of non-hydrogen atoms and hydrogen atoms in the chain respectively. The H(added) column lists the number of hydrogen atoms added and optimized by MolProbity. The Clashes column lists the number of clashes within the asymmetric unit, whereas Symm-Clashes lists symmetry-related clashes.

Mol	Chain	Non-H	H(model)	H(added)	Clashes	Symm-Clashes
1	A	2169	0	2205	5	0
1	B	2204	0	2228	8	0
1	C	2204	0	2228	9	0
2	A	37	0	0	0	0
2	B	37	0	0	0	0
2	C	37	0	0	0	0
3	A	24	0	32	3	0

Continued on next page...

Continued from previous page...

Mol	Chain	Non-H	H(model)	H(added)	Clashes	Symm-Clashes
3	B	36	0	48	1	0
3	C	36	0	48	3	0
4	B	10	0	0	0	0
4	C	10	0	0	0	0
5	A	55	0	0	0	0
5	B	46	0	0	1	0
5	C	29	0	0	2	0
All	All	6934	0	6789	20	0

The all-atom clashscore is defined as the number of clashes found per 1000 atoms (including hydrogen atoms). The all-atom clashscore for this structure is 1.

All (20) close contacts within the same asymmetric unit are listed below, sorted by their clash magnitude.

Atom-1	Atom-2	Interatomic distance (Å)	Clash overlap (Å)
1:C:595:VAL:HG12	1:C:752:LEU:HG	1.77	0.67
1:C:721:HIS:ND1	5:C:902:HOH:O	2.30	0.64
1:B:663:PRO:HB3	3:B:805:GOL:H11	1.81	0.61
1:A:637:GLY:O	1:A:638:LEU:HD13	2.06	0.56
3:A:802:GOL:H2	1:B:568:ARG:HH12	1.71	0.55
3:A:802:GOL:H2	1:B:568:ARG:NH1	2.29	0.46
1:A:568:ARG:HH12	3:A:802:GOL:H31	1.80	0.45
1:C:728:ARG:HH11	3:C:806:GOL:H11	1.82	0.45
1:C:484:GLY:HA2	1:C:511:LYS:HG3	1.99	0.45
1:C:485:GLN:OE1	5:C:901:HOH:O	2.21	0.45
1:C:732:HIS:HA	3:C:806:GOL:H32	2.00	0.44
1:C:728:ARG:HH11	3:C:806:GOL:C1	2.32	0.42
1:A:558:ALA:CB	1:A:624:LEU:HB3	2.51	0.41
1:B:558:ALA:CB	1:B:624:LEU:HB3	2.50	0.41
1:B:673:HIS:HD2	5:B:906:HOH:O	2.04	0.41
1:A:658:VAL:HG23	1:A:666:LEU:HD13	2.02	0.41
1:B:669:ARG:HH12	1:C:458:GLU:HA	1.85	0.40
1:C:558:ALA:CB	1:C:624:LEU:HB3	2.52	0.40
1:A:574:GLY:O	1:B:714:ASP:HB2	2.22	0.40
1:B:605:MET:SD	1:B:633:ILE:HD13	2.61	0.40

There are no symmetry-related clashes.

5.3 Torsion angles [i](#)

5.3.1 Protein backbone [i](#)

In the following table, the Percentiles column shows the percent Ramachandran outliers of the chain as a percentile score with respect to all X-ray entries followed by that with respect to entries of similar resolution.

The Analysed column shows the number of residues for which the backbone conformation was analysed, and the total number of residues.

Mol	Chain	Analysed	Favoured	Allowed	Outliers	Percentiles	
1	A	270/312 (86%)	267 (99%)	3 (1%)	0	100	100
1	B	272/312 (87%)	270 (99%)	2 (1%)	0	100	100
1	C	272/312 (87%)	265 (97%)	6 (2%)	1 (0%)	30	48
All	All	814/936 (87%)	802 (98%)	11 (1%)	1 (0%)	48	67

All (1) Ramachandran outliers are listed below:

Mol	Chain	Res	Type
1	C	483	PHE

5.3.2 Protein sidechains [i](#)

In the following table, the Percentiles column shows the percent sidechain outliers of the chain as a percentile score with respect to all X-ray entries followed by that with respect to entries of similar resolution.

The Analysed column shows the number of residues for which the sidechain conformation was analysed, and the total number of residues.

Mol	Chain	Analysed	Rotameric	Outliers	Percentiles	
1	A	233/266 (88%)	229 (98%)	4 (2%)	56	78
1	B	236/266 (89%)	236 (100%)	0	100	100
1	C	236/266 (89%)	234 (99%)	2 (1%)	79	91
All	All	705/798 (88%)	699 (99%)	6 (1%)	75	89

All (6) residues with a non-rotameric sidechain are listed below:

Mol	Chain	Res	Type
1	A	455	SER
1	A	464	LYS

Continued on next page...

Continued from previous page...

Mol	Chain	Res	Type
1	A	627	GLU
1	A	714	ASP
1	C	483	PHE
1	C	501	LYS

Sometimes sidechains can be flipped to improve hydrogen bonding and reduce clashes. All (4) such sidechains are listed below:

Mol	Chain	Res	Type
1	B	600	GLN
1	B	673	HIS
1	B	718	ASN
1	B	737	GLN

5.3.3 RNA [i](#)

There are no RNA molecules in this entry.

5.4 Non-standard residues in protein, DNA, RNA chains [i](#)

There are no non-standard protein/DNA/RNA residues in this entry.

5.5 Carbohydrates [i](#)

There are no oligosaccharides in this entry.

5.6 Ligand geometry [i](#)

23 ligands are modelled in this entry.

In the following table, the Counts columns list the number of bonds (or angles) for which Mogul statistics could be retrieved, the number of bonds (or angles) that are observed in the model and the number of bonds (or angles) that are defined in the Chemical Component Dictionary. The Link column lists molecule types, if any, to which the group is linked. The Z score for a bond length (or angle) is the number of standard deviations the observed value is removed from the expected value. A bond length (or angle) with $|Z| > 2$ is considered an outlier worth inspection. RMSZ is the root-mean-square of all Z scores of the bond lengths (or angles).

Mol	Type	Chain	Res	Link	Bond lengths			Bond angles		
					Counts	RMSZ	$\# Z > 2$	Counts	RMSZ	$\# Z > 2$
3	GOL	A	802	-	5,5,5	0.08	0	5,5,5	0.28	0

Mol	Type	Chain	Res	Link	Bond lengths			Bond angles		
					Counts	RMSZ	# Z > 2	Counts	RMSZ	# Z > 2
3	GOL	A	805	-	5,5,5	0.12	0	5,5,5	0.35	0
3	GOL	A	804	-	5,5,5	0.10	0	5,5,5	0.33	0
3	GOL	B	805	-	5,5,5	0.14	0	5,5,5	0.33	0
2	A1AV2	A	801	-	40,42,42	0.82	0	42,65,65	1.32	4 (9%)
4	SO4	B	808	-	4,4,4	0.36	0	6,6,6	0.11	0
2	A1AV2	B	801	-	40,42,42	0.72	0	42,65,65	1.18	4 (9%)
3	GOL	C	802	-	5,5,5	0.12	0	5,5,5	0.32	0
3	GOL	C	807	-	5,5,5	0.09	0	5,5,5	0.30	0
3	GOL	C	804	-	5,5,5	0.12	0	5,5,5	0.31	0
3	GOL	C	806	-	5,5,5	0.11	0	5,5,5	0.39	0
4	SO4	C	808	-	4,4,4	0.36	0	6,6,6	0.10	0
3	GOL	B	802	-	5,5,5	0.11	0	5,5,5	0.31	0
4	SO4	C	809	-	4,4,4	0.30	0	6,6,6	0.07	0
3	GOL	B	806	-	5,5,5	0.08	0	5,5,5	0.27	0
4	SO4	B	809	-	4,4,4	0.31	0	6,6,6	0.08	0
3	GOL	C	805	-	5,5,5	0.10	0	5,5,5	0.29	0
3	GOL	A	803	-	5,5,5	0.10	0	5,5,5	0.27	0
2	A1AV2	C	801	-	40,42,42	0.77	0	42,65,65	1.13	5 (11%)
3	GOL	B	803	-	5,5,5	0.08	0	5,5,5	0.26	0
3	GOL	C	803	-	5,5,5	0.10	0	5,5,5	0.40	0
3	GOL	B	804	-	5,5,5	0.11	0	5,5,5	0.35	0
3	GOL	B	807	-	5,5,5	0.10	0	5,5,5	0.34	0

In the following table, the Chirals column lists the number of chiral outliers, the number of chiral centers analysed, the number of these observed in the model and the number defined in the Chemical Component Dictionary. Similar counts are reported in the Torsion and Rings columns. '-' means no outliers of that kind were identified.

Mol	Type	Chain	Res	Link	Chirals	Torsions	Rings
3	GOL	A	802	-	-	2/4/4/4	-
3	GOL	A	805	-	-	0/4/4/4	-
3	GOL	A	804	-	-	2/4/4/4	-
3	GOL	B	805	-	-	2/4/4/4	-
2	A1AV2	A	801	-	-	1/20/42/42	0/6/6/6
2	A1AV2	B	801	-	-	3/20/42/42	0/6/6/6
3	GOL	C	802	-	-	2/4/4/4	-
3	GOL	C	807	-	-	2/4/4/4	-
3	GOL	C	804	-	-	2/4/4/4	-
3	GOL	C	806	-	-	3/4/4/4	-
3	GOL	B	802	-	-	0/4/4/4	-

Continued on next page...

Continued from previous page...

Mol	Type	Chain	Res	Link	Chirals	Torsions	Rings
3	GOL	B	806	-	-	1/4/4/4	-
3	GOL	C	805	-	-	0/4/4/4	-
3	GOL	A	803	-	-	0/4/4/4	-
2	A1AV2	C	801	-	-	3/20/42/42	0/6/6/6
3	GOL	B	803	-	-	4/4/4/4	-
3	GOL	C	803	-	-	2/4/4/4	-
3	GOL	B	804	-	-	4/4/4/4	-
3	GOL	B	807	-	-	1/4/4/4	-

There are no bond length outliers.

All (13) bond angle outliers are listed below:

Mol	Chain	Res	Type	Atoms	Z	Observed(°)	Ideal(°)
2	A	801	A1AV2	C25-S1-N6	5.58	113.83	107.27
2	B	801	A1AV2	C25-S1-N6	3.92	111.88	107.27
2	B	801	A1AV2	O2-S1-N6	-3.19	104.35	107.02
2	A	801	A1AV2	C9-C10-C13	-2.57	117.73	120.80
2	B	801	A1AV2	C9-C10-C13	-2.47	117.85	120.80
2	C	801	A1AV2	C9-C10-C13	-2.41	117.92	120.80
2	C	801	A1AV2	O3-S1-N6	-2.37	105.04	107.02
2	B	801	A1AV2	C24-N6-C23	2.22	93.97	92.16
2	C	801	A1AV2	C24-N6-C23	2.16	93.92	92.16
2	C	801	A1AV2	C25-S1-N6	2.15	109.80	107.27
2	C	801	A1AV2	C20-N5-C19	2.12	132.08	125.17
2	A	801	A1AV2	O3-S1-C25	-2.09	105.43	108.30
2	A	801	A1AV2	C24-N6-C23	2.09	93.86	92.16

There are no chirality outliers.

All (34) torsion outliers are listed below:

Mol	Chain	Res	Type	Atoms
2	A	801	A1AV2	C23-N6-S1-C25
2	B	801	A1AV2	C23-N6-S1-C25
3	A	804	GOL	C1-C2-C3-O3
3	A	804	GOL	O2-C2-C3-O3
3	B	804	GOL	O1-C1-C2-C3
3	B	804	GOL	O2-C2-C3-O3
3	B	805	GOL	C1-C2-C3-O3
3	C	804	GOL	O1-C1-C2-C3
3	C	806	GOL	C1-C2-C3-O3

Continued on next page...

Continued from previous page...

Mol	Chain	Res	Type	Atoms
3	C	807	GOL	O1-C1-C2-C3
3	C	804	GOL	O1-C1-C2-O2
3	A	802	GOL	O1-C1-C2-C3
3	B	803	GOL	O1-C1-C2-C3
3	B	803	GOL	C1-C2-C3-O3
3	B	804	GOL	C1-C2-C3-O3
3	C	803	GOL	C1-C2-C3-O3
3	C	806	GOL	O1-C1-C2-C3
3	B	804	GOL	O1-C1-C2-O2
3	C	806	GOL	O2-C2-C3-O3
3	C	807	GOL	O1-C1-C2-O2
3	B	805	GOL	O2-C2-C3-O3
3	B	806	GOL	O2-C2-C3-O3
3	B	807	GOL	O1-C1-C2-O2
3	C	802	GOL	O1-C1-C2-C3
2	B	801	A1AV2	C23-N6-S1-O3
2	C	801	A1AV2	C23-N6-S1-O3
2	C	801	A1AV2	C24-N6-S1-O2
3	B	803	GOL	O1-C1-C2-O2
3	C	803	GOL	O2-C2-C3-O3
3	B	803	GOL	O2-C2-C3-O3
3	C	802	GOL	O1-C1-C2-O2
3	A	802	GOL	O1-C1-C2-O2
2	B	801	A1AV2	C24-N6-S1-O2
2	C	801	A1AV2	C12-C14-C15-C18

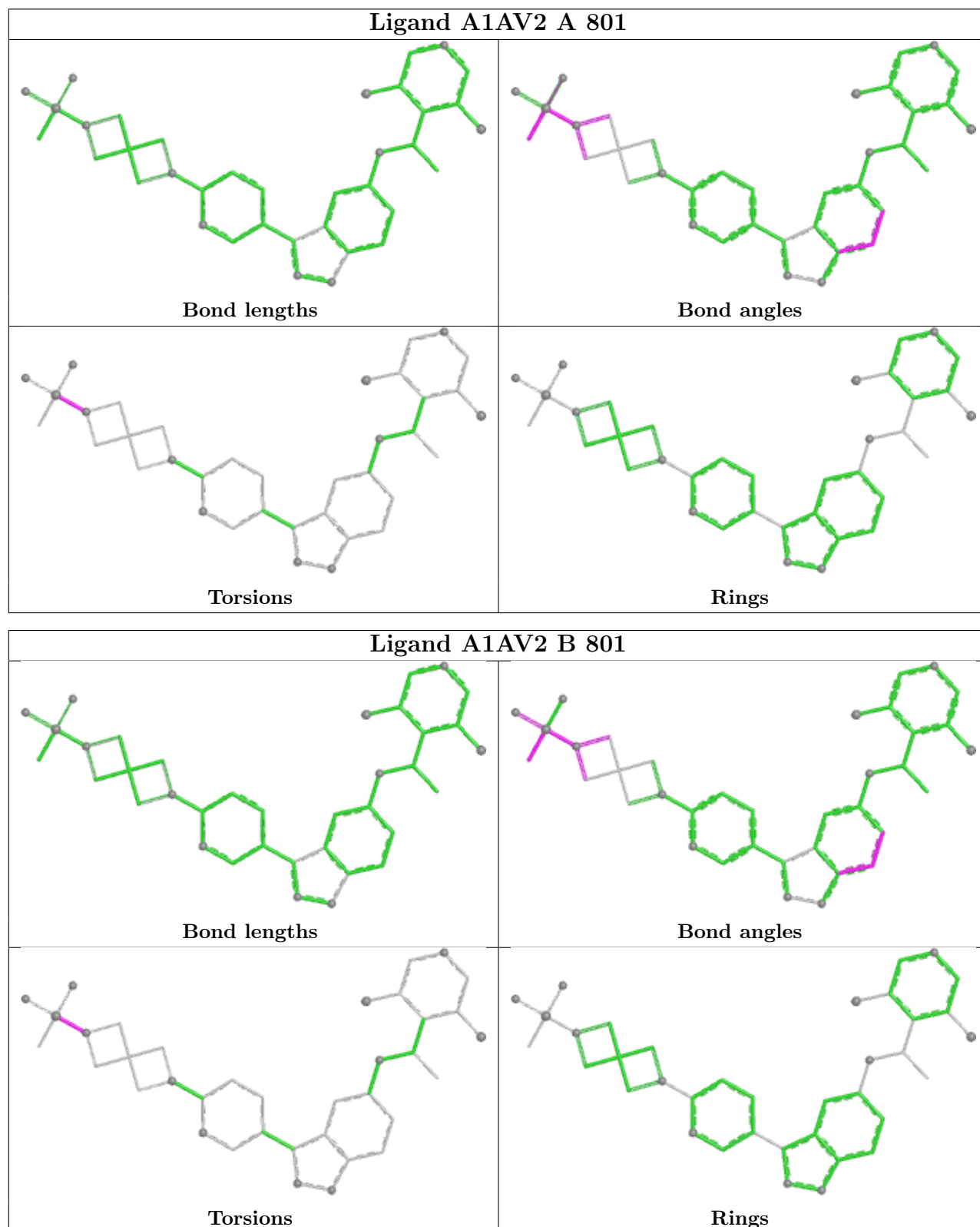
There are no ring outliers.

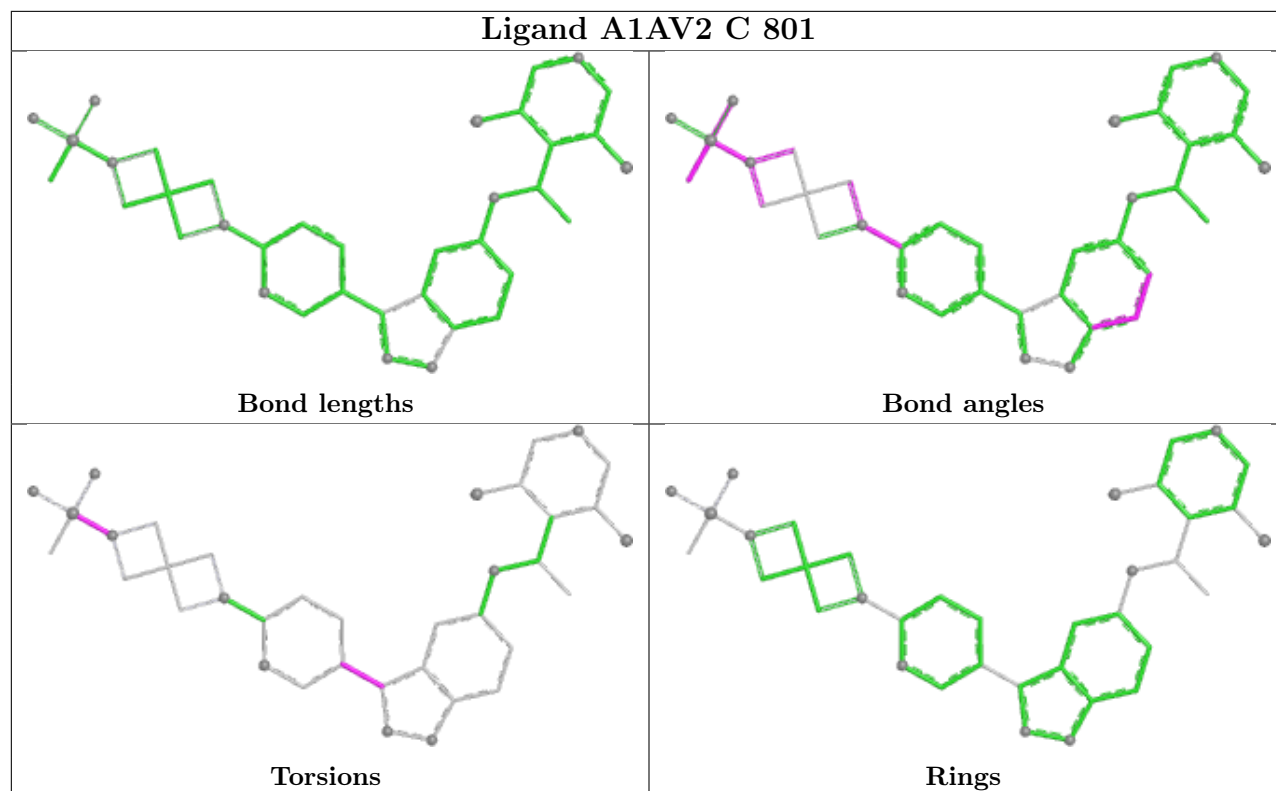
3 monomers are involved in 7 short contacts:

Mol	Chain	Res	Type	Clashes	Symm-Clashes
3	A	802	GOL	3	0
3	B	805	GOL	1	0
3	C	806	GOL	3	0

The following is a two-dimensional graphical depiction of Mogul quality analysis of bond lengths, bond angles, torsion angles, and ring geometry for all instances of the Ligand of Interest. In addition, ligands with molecular weight > 250 and outliers as shown on the validation Tables will also be included. For torsion angles, if less than 5% of the Mogul distribution of torsion angles is within 10 degrees of the torsion angle in question, then that torsion angle is considered an outlier. Any bond that is central to one or more torsion angles identified as an outlier by Mogul will be highlighted in the graph. For rings, the root-mean-square deviation (RMSD) between the ring in question and similar rings identified by Mogul is calculated over all ring torsion angles. If the

average RMSD is greater than 60 degrees and the minimal RMSD between the ring in question and any Mogul-identified rings is also greater than 60 degrees, then that ring is considered an outlier. The outliers are highlighted in purple. The color gray indicates Mogul did not find sufficient equivalents in the CSD to analyse the geometry.





5.7 Other polymers [i](#)

There are no such residues in this entry.

5.8 Polymer linkage issues [i](#)

There are no chain breaks in this entry.

6 Fit of model and data

6.1 Protein, DNA and RNA chains

In the following table, the column labelled ‘#RSRZ> 2’ contains the number (and percentage) of RSRZ outliers, followed by percent RSRZ outliers for the chain as percentile scores relative to all X-ray entries and entries of similar resolution. The OWAB column contains the minimum, median, 95th percentile and maximum values of the occupancy-weighted average B-factor per residue. The column labelled ‘Q< 0.9’ lists the number of (and percentage) of residues with an average occupancy less than 0.9.

Mol	Chain	Analysed	<RSRZ>	#RSRZ>2	OWAB(Å ²)	Q<0.9
1	A	276/312 (88%)	0.52	24 (8%) 17 17	33, 50, 82, 106	0
1	B	278/312 (89%)	0.33	17 (6%) 28 27	31, 45, 88, 114	0
1	C	278/312 (89%)	0.90	49 (17%) 4 5	39, 57, 101, 146	0
All	All	832/936 (88%)	0.58	90 (10%) 12 12	31, 50, 92, 146	0

All (90) RSRZ outliers are listed below:

Mol	Chain	Res	Type	RSRZ
1	A	575	LEU	6.3
1	B	656	LEU	6.2
1	C	483	PHE	5.5
1	C	639	ALA	5.3
1	B	483	PHE	5.1
1	C	656	LEU	4.9
1	A	638	LEU	4.5
1	C	573	PRO	4.4
1	A	573	PRO	4.3
1	C	649	LYS	4.3
1	A	574	GLY	4.1
1	C	482	ALA	4.0
1	C	718	ASN	4.0
1	A	656	LEU	3.7
1	A	755	THR	3.5
1	B	573	PRO	3.4
1	C	511	LYS	3.2
1	B	649	LYS	3.1
1	C	565	GLU	3.1
1	B	640	ARG	3.1
1	C	755	THR	3.0
1	C	638	LEU	3.0
1	B	644	ASN	3.0

Continued on next page...

Continued from previous page...

Mol	Chain	Res	Type	RSRZ
1	B	482	ALA	3.0
1	C	696	PRO	2.9
1	B	458	GLU	2.9
1	A	637	GLY	2.9
1	C	591	PHE	2.9
1	C	716	PRO	2.9
1	C	572	PRO	2.8
1	A	705	LYS	2.8
1	B	645	LEU	2.8
1	C	706	LEU	2.8
1	C	644	ASN	2.8
1	A	572	PRO	2.8
1	B	639	ALA	2.8
1	C	704	PHE	2.8
1	C	700	VAL	2.8
1	A	455	SER	2.7
1	C	754	VAL	2.7
1	C	648	TYR	2.7
1	C	695	TYR	2.7
1	C	646	ASP	2.6
1	A	517	LYS	2.6
1	B	754	VAL	2.5
1	A	496	LYS	2.5
1	A	754	VAL	2.5
1	C	729	GLU	2.4
1	C	723	LEU	2.4
1	C	707	LEU	2.4
1	A	482	ALA	2.4
1	B	481	GLY	2.4
1	B	512	ASP	2.4
1	C	592	LYS	2.4
1	A	669	ARG	2.4
1	C	645	LEU	2.3
1	C	569	ALA	2.3
1	C	693	SER	2.3
1	C	640	ARG	2.3
1	C	697	GLY	2.3
1	A	483	PHE	2.3
1	B	646	ASP	2.3
1	B	648	TYR	2.3
1	A	481	GLY	2.2
1	A	454	VAL	2.2

Continued on next page...

Continued from previous page...

Mol	Chain	Res	Type	RSRZ
1	B	511	LYS	2.2
1	C	481	GLY	2.2
1	A	753	THR	2.2
1	B	755	THR	2.2
1	A	458	GLU	2.2
1	C	658	VAL	2.2
1	C	516	ASP	2.1
1	C	705	LYS	2.1
1	C	708	LYS	2.1
1	C	692	GLY	2.1
1	C	753	THR	2.1
1	C	719	CYS	2.1
1	C	715	LYS	2.1
1	A	670	VAL	2.1
1	A	666	LEU	2.1
1	C	501	LYS	2.1
1	C	726	ILE	2.1
1	C	589	LEU	2.1
1	A	476	LYS	2.1
1	C	597	CYS	2.1
1	C	690	LEU	2.0
1	C	717	ALA	2.0
1	C	647	TYR	2.0
1	C	720	THR	2.0
1	A	702	GLU	2.0

6.2 Non-standard residues in protein, DNA, RNA chains [i](#)

There are no non-standard protein/DNA/RNA residues in this entry.

6.3 Carbohydrates [i](#)

There are no monosaccharides in this entry.

6.4 Ligands [i](#)

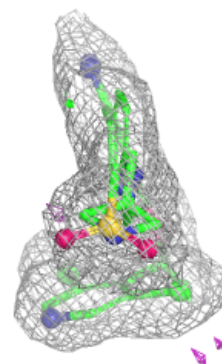
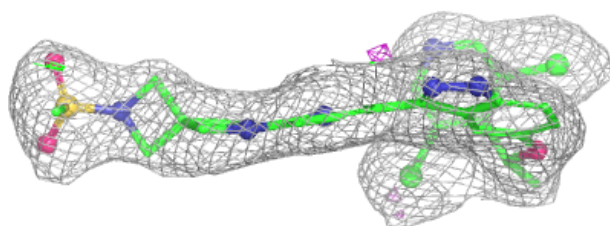
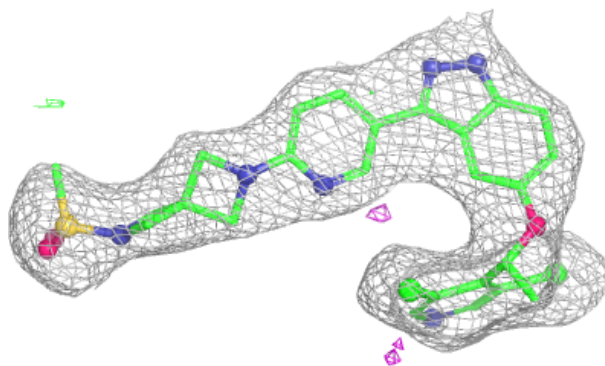
In the following table, the Atoms column lists the number of modelled atoms in the group and the number defined in the chemical component dictionary. The B-factors column lists the minimum, median, 95th percentile and maximum values of B factors of atoms in the group. The column labelled 'Q < 0.9' lists the number of atoms with occupancy less than 0.9.

Mol	Type	Chain	Res	Atoms	RSCC	RSR	B-factors(\AA^2)	Q<0.9
4	SO4	B	809	5/5	0.60	0.27	83,98,129,130	0
4	SO4	C	809	5/5	0.61	0.27	100,113,123,130	0
3	GOL	C	806	6/6	0.71	0.20	66,70,72,73	0
3	GOL	C	807	6/6	0.79	0.20	74,76,77,79	0
4	SO4	C	808	5/5	0.85	0.19	72,87,108,126	0
3	GOL	C	804	6/6	0.85	0.16	53,64,65,66	0
3	GOL	B	805	6/6	0.86	0.16	48,59,63,65	0
3	GOL	A	802	6/6	0.86	0.15	45,51,54,56	0
4	SO4	B	808	5/5	0.86	0.20	58,72,82,93	5
3	GOL	B	807	6/6	0.87	0.17	61,67,73,79	0
3	GOL	A	803	6/6	0.88	0.15	60,70,75,84	0
3	GOL	B	806	6/6	0.88	0.21	54,63,66,67	6
3	GOL	A	804	6/6	0.89	0.14	51,56,59,62	0
3	GOL	C	803	6/6	0.89	0.13	62,63,65,70	0
3	GOL	B	804	6/6	0.89	0.13	55,61,63,67	0
3	GOL	B	803	6/6	0.91	0.16	63,67,72,73	0
3	GOL	C	805	6/6	0.91	0.14	61,65,69,71	0
2	A1AV2	C	801	37/37	0.91	0.12	43,57,77,79	0
3	GOL	A	805	6/6	0.91	0.18	50,64,75,76	0
3	GOL	B	802	6/6	0.94	0.13	56,65,68,70	0
2	A1AV2	A	801	37/37	0.94	0.10	36,47,74,85	0
3	GOL	C	802	6/6	0.94	0.10	42,44,48,50	0
2	A1AV2	B	801	37/37	0.95	0.09	35,42,69,76	0

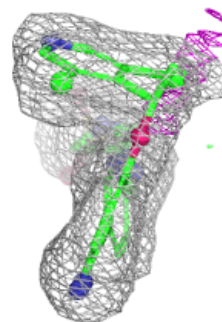
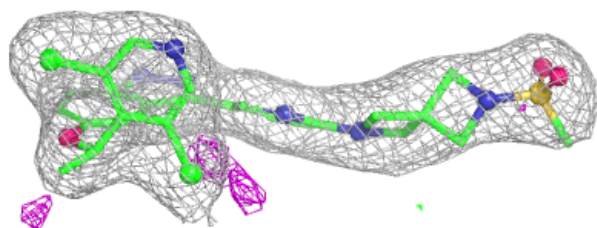
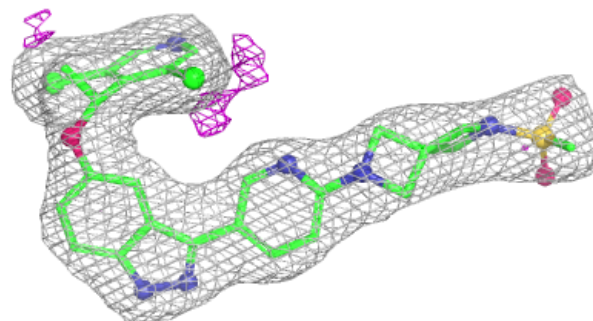
The following is a graphical depiction of the model fit to experimental electron density of all instances of the Ligand of Interest. In addition, ligands with molecular weight > 250 and outliers as shown on the geometry validation Tables will also be included. Each fit is shown from different orientation to approximate a three-dimensional view.

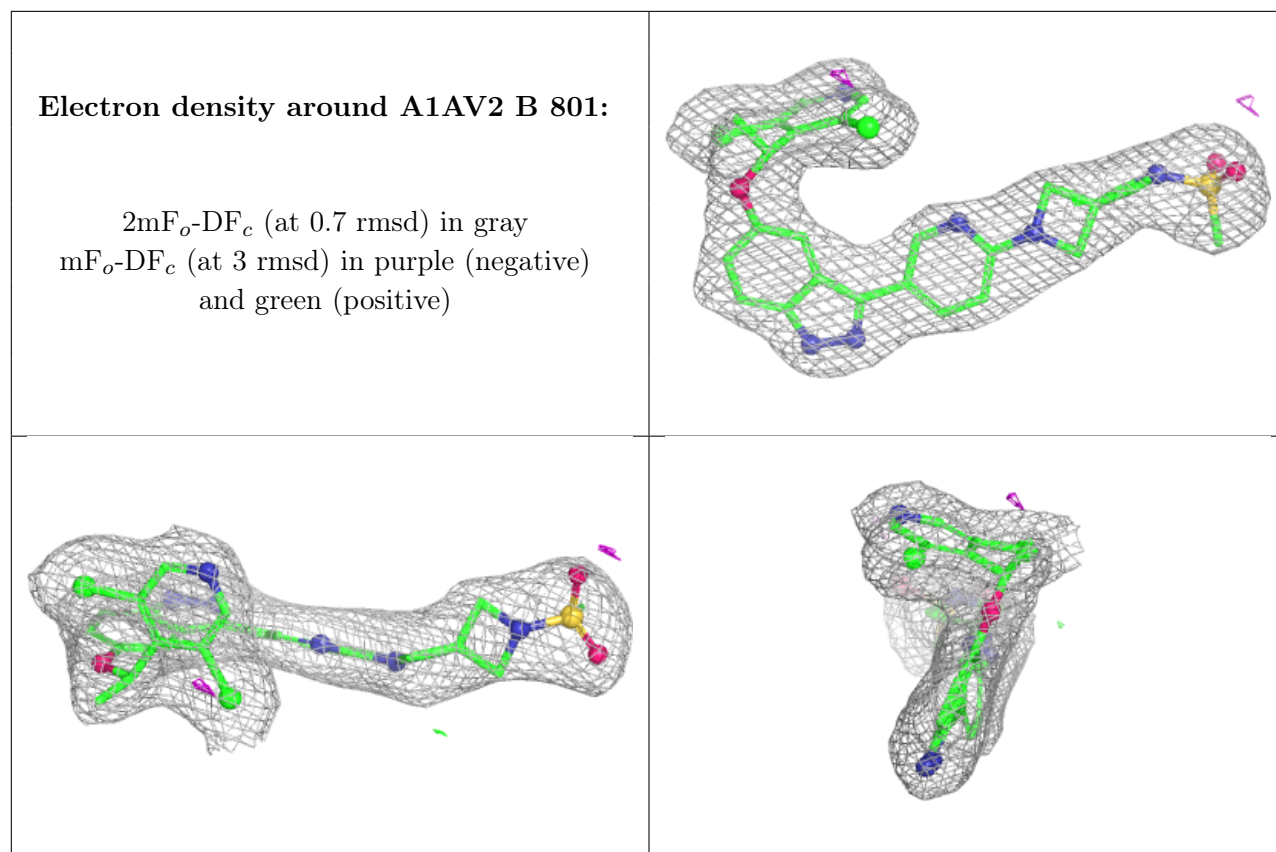
Electron density around A1AV2 C 801:

$2mF_o-DF_c$ (at 0.7 rmsd) in gray
 mF_o-DF_c (at 3 rmsd) in purple (negative)
and green (positive)

**Electron density around A1AV2 A 801:**

$2mF_o-DF_c$ (at 0.7 rmsd) in gray
 mF_o-DF_c (at 3 rmsd) in purple (negative)
and green (positive)





6.5 Other polymers [i](#)

There are no such residues in this entry.