



# Full wwPDB X-ray Structure Validation Report ⓘ

Aug 22, 2023 – 05:05 PM EDT

PDB ID : 3CBD  
Title : Directed Evolution of cytochrome P450 BM3, to octane monooxygenase 139-3  
Authors : Mehareenna, Y.T.; Li, H.; Poulos, T.L.  
Deposited on : 2008-02-21  
Resolution : 2.65 Å(reported)

This is a Full wwPDB X-ray Structure Validation Report for a publicly released PDB entry.

We welcome your comments at [validation@mail.wwpdb.org](mailto:validation@mail.wwpdb.org)

A user guide is available at

<https://www.wwpdb.org/validation/2017/XrayValidationReportHelp>

with specific help available everywhere you see the ⓘ symbol.

The types of validation reports are described at

<http://www.wwpdb.org/validation/2017/FAQs#types>.

---

The following versions of software and data (see [references ⓘ](#)) were used in the production of this report:

MolProbity : 4.02b-467  
Mogul : 1.8.5 (274361), CSD as541be (2020)  
Xtriage (Phenix) : 1.13  
EDS : 2.35  
buster-report : 1.1.7 (2018)  
Percentile statistics : 20191225.v01 (using entries in the PDB archive December 25th 2019)  
Refmac : 5.8.0158  
CCP4 : 7.0.044 (Gargrove)  
Ideal geometry (proteins) : Engh & Huber (2001)  
Ideal geometry (DNA, RNA) : Parkinson et al. (1996)  
Validation Pipeline (wwPDB-VP) : 2.35

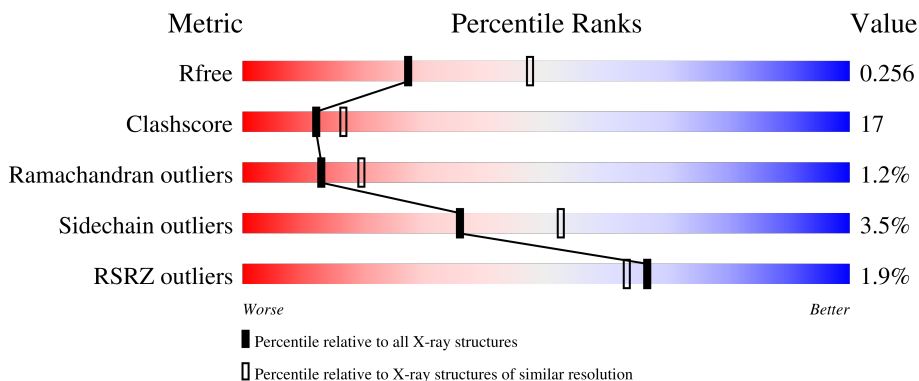
# 1 Overall quality at a glance

The following experimental techniques were used to determine the structure:

*X-RAY DIFFRACTION*

The reported resolution of this entry is 2.65 Å.

Percentile scores (ranging between 0-100) for global validation metrics of the entry are shown in the following graphic. The table shows the number of entries on which the scores are based.



Metric	Whole archive (#Entries)	Similar resolution (#Entries, resolution range(Å))
$R_{free}$	130704	1332 (2.68-2.64)
Clashscore	141614	1374 (2.68-2.64)
Ramachandran outliers	138981	1349 (2.68-2.64)
Sidechain outliers	138945	1349 (2.68-2.64)
RSRZ outliers	127900	1318 (2.68-2.64)

The table below summarises the geometric issues observed across the polymeric chains and their fit to the electron density. The red, orange, yellow and green segments of the lower bar indicate the fraction of residues that contain outliers for  $\geq 3$ , 2, 1 and 0 types of geometric quality criteria respectively. A grey segment represents the fraction of residues that are not modelled. The numeric value for each fraction is indicated below the corresponding segment, with a dot representing fractions  $\leq 5\%$ . The upper red bar (where present) indicates the fraction of residues that have poor fit to the electron density. The numeric value is given above the bar.

Mol	Chain	Length	Quality of chain
1	A	455	
1	B	455	

## 2 Entry composition

There are 4 unique types of molecules in this entry. The entry contains 7745 atoms, of which 0 are hydrogens and 0 are deuteriums.

In the tables below, the ZeroOcc column contains the number of atoms modelled with zero occupancy, the AltConf column contains the number of residues with at least one atom in alternate conformation and the Trace column contains the number of residues modelled with at most 2 atoms.

- Molecule 1 is a protein called Bifunctional P-450/NADPH-P450 reductase.

Mol	Chain	Residues	Atoms					ZeroOcc	AltConf	Trace
			Total	C	N	O	S			
1	A	455	3667	2346	617	687	17	0	0	0
1	B	455	3667	2346	617	687	17	0	0	0

There are 22 discrepancies between the modelled and reference sequences:

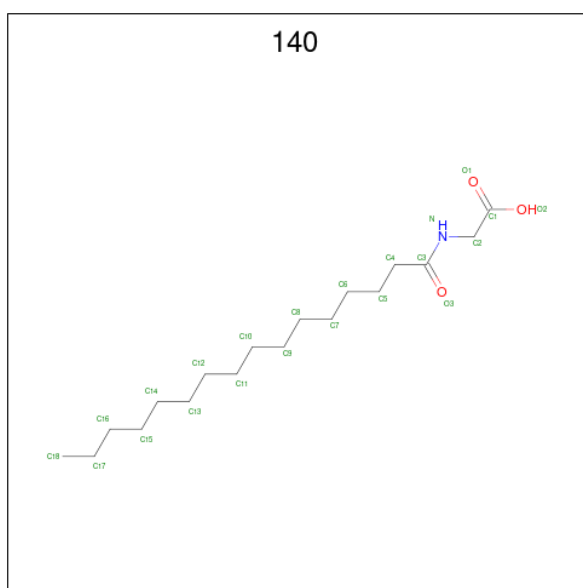
Chain	Residue	Modelled	Actual	Comment	Reference
A	78	ALA	VAL	engineered mutation	UNP P14779
A	138	TYR	HIS	engineered mutation	UNP P14779
A	175	ILE	THR	engineered mutation	UNP P14779
A	178	ILE	VAL	engineered mutation	UNP P14779
A	184	VAL	ALA	engineered mutation	UNP P14779
A	236	GLN	HIS	engineered mutation	UNP P14779
A	252	GLY	GLU	engineered mutation	UNP P14779
A	255	SER	ARG	engineered mutation	UNP P14779
A	290	VAL	ALA	engineered mutation	UNP P14779
A	295	THR	ALA	engineered mutation	UNP P14779
A	353	VAL	LEU	engineered mutation	UNP P14779
B	78	ALA	VAL	engineered mutation	UNP P14779
B	138	TYR	HIS	engineered mutation	UNP P14779
B	175	ILE	THR	engineered mutation	UNP P14779
B	178	ILE	VAL	engineered mutation	UNP P14779
B	184	VAL	ALA	engineered mutation	UNP P14779
B	236	GLN	HIS	engineered mutation	UNP P14779
B	252	GLY	GLU	engineered mutation	UNP P14779
B	255	SER	ARG	engineered mutation	UNP P14779
B	290	VAL	ALA	engineered mutation	UNP P14779
B	295	THR	ALA	engineered mutation	UNP P14779
B	353	VAL	LEU	engineered mutation	UNP P14779

- Molecule 2 is PROTOPORPHYRIN IX CONTAINING FE (three-letter code: HEM) (formula: C<sub>34</sub>H<sub>32</sub>FeN<sub>4</sub>O<sub>4</sub>).



Mol	Chain	Residues	Atoms				ZeroOcc	AltConf	
			Total	C	Fe	N			O
2	A	1	43	34	1	4	4	0	0
2	B	1	43	34	1	4	4	0	0

- Molecule 3 is N-PALMITOYLGLYCINE (three-letter code: 140) (formula:  $C_{18}H_{35}NO_3$ ).



Mol	Chain	Residues	Atoms				ZeroOcc	AltConf
			Total	C	N	O		
3	A	1	22	18	1	3	0	0
3	B	1	22	18	1	3	0	0

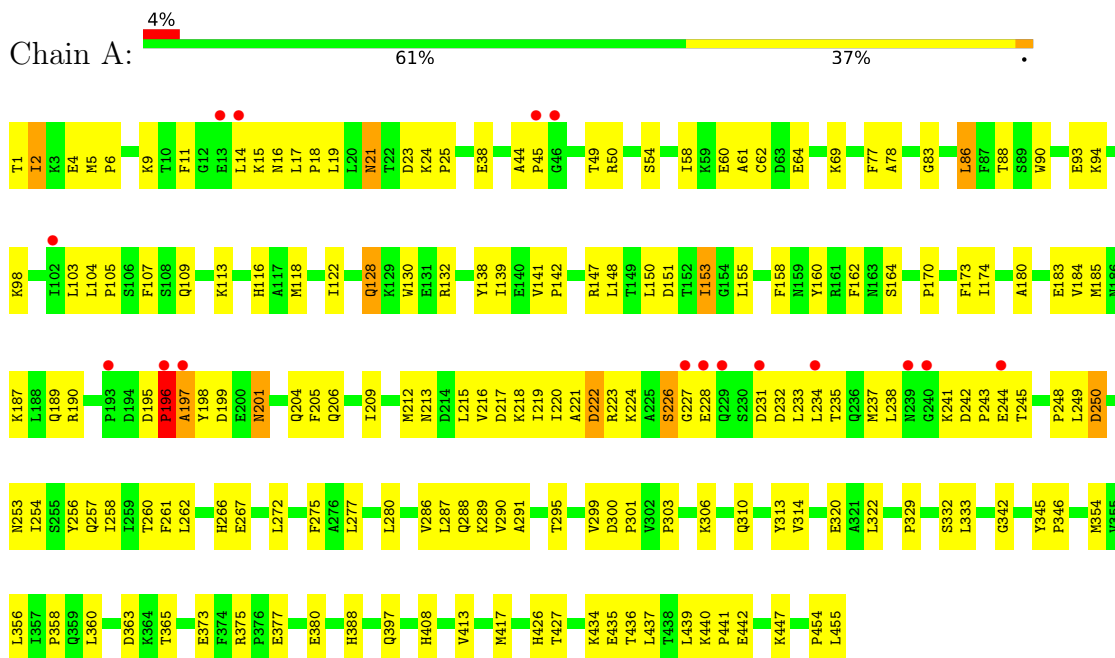
- Molecule 4 is water.

<b>Mol</b>	<b>Chain</b>	<b>Residues</b>	<b>Atoms</b>		<b>ZeroOcc</b>	<b>AltConf</b>
4	A	94	Total 94	O 94	0	0
4	B	187	Total 187	O 187	0	0

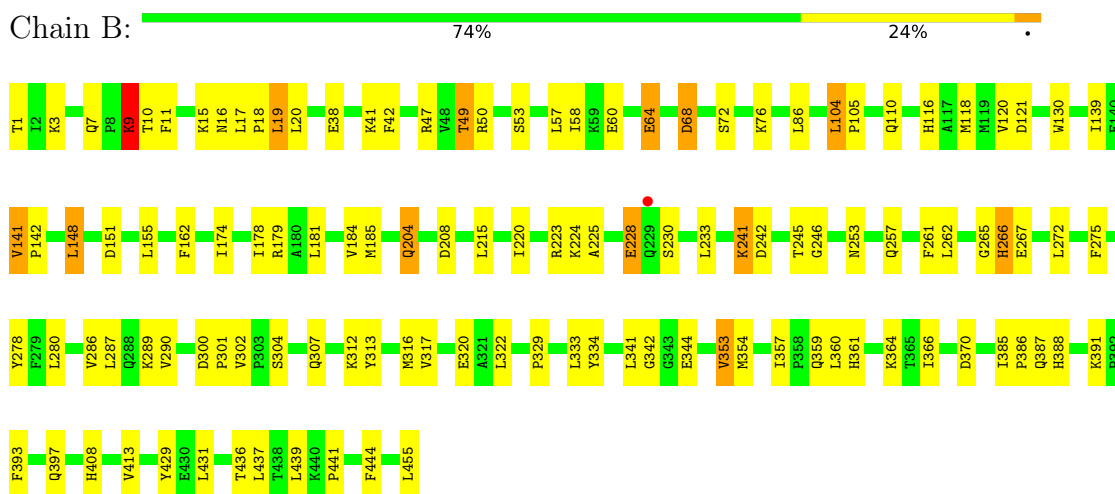
### 3 Residue-property plots i

These plots are drawn for all protein, RNA, DNA and oligosaccharide chains in the entry. The first graphic for a chain summarises the proportions of the various outlier classes displayed in the second graphic. The second graphic shows the sequence view annotated by issues in geometry and electron density. Residues are color-coded according to the number of geometric quality criteria for which they contain at least one outlier: green = 0, yellow = 1, orange = 2 and red = 3 or more. A red dot above a residue indicates a poor fit to the electron density ( $RSRZ > 2$ ). Stretches of 2 or more consecutive residues without any outlier are shown as a green connector. Residues present in the sample, but not in the model, are shown in grey.

- Molecule 1: Bifunctional P-450/NADPH-P450 reductase



- Molecule 1: Bifunctional P-450/NADPH-P450 reductase



## 4 Data and refinement statistics

Property	Value	Source
Space group	P 21 21 21	Depositor
Cell constants a, b, c, $\alpha$ , $\beta$ , $\gamma$	61.78Å 127.35Å 183.34Å 90.00° 90.00° 90.00°	Depositor
Resolution (Å)	47.53 – 2.65 47.53 – 2.65	Depositor EDS
% Data completeness (in resolution range)	97.7 (47.53-2.65) 97.8 (47.53-2.65)	Depositor EDS
$R_{merge}$	0.20	Depositor
$R_{sym}$	0.20	Depositor
$\langle I/\sigma(I) \rangle$ <sup>1</sup>	1.80 (at 2.65Å)	Xtrriage
Refinement program	CNS 1.1	Depositor
R, $R_{free}$	0.211 , 0.258 0.210 , 0.256	Depositor DCC
$R_{free}$ test set	4241 reflections (10.10%)	wwPDB-VP
Wilson B-factor (Å <sup>2</sup> )	53.6	Xtrriage
Anisotropy	0.472	Xtrriage
Bulk solvent $k_{sol}$ (e/Å <sup>3</sup> ), $B_{sol}$ (Å <sup>2</sup> )	0.30 , 38.2	EDS
L-test for twinning <sup>2</sup>	$\langle  L  \rangle = 0.51$ , $\langle L^2 \rangle = 0.35$	Xtrriage
Estimated twinning fraction	No twinning to report.	Xtrriage
$F_o, F_c$ correlation	0.94	EDS
Total number of atoms	7745	wwPDB-VP
Average B, all atoms (Å <sup>2</sup> )	58.0	wwPDB-VP

Xtrriage's analysis on translational NCS is as follows: *The largest off-origin peak in the Patterson function is 3.30% of the height of the origin peak. No significant pseudotranslation is detected.*

<sup>1</sup>Intensities estimated from amplitudes.

<sup>2</sup>Theoretical values of  $\langle |L| \rangle$ ,  $\langle L^2 \rangle$  for acentric reflections are 0.5, 0.333 respectively for untwinned datasets, and 0.375, 0.2 for perfectly twinned datasets.

## 5 Model quality

### 5.1 Standard geometry

Bond lengths and bond angles in the following residue types are not validated in this section: 140, HEM

The Z score for a bond length (or angle) is the number of standard deviations the observed value is removed from the expected value. A bond length (or angle) with  $|Z| > 5$  is considered an outlier worth inspection. RMSZ is the root-mean-square of all Z scores of the bond lengths (or angles).

Mol	Chain	Bond lengths		Bond angles	
		RMSZ	# Z  >5	RMSZ	# Z  >5
1	A	0.35	0/3751	0.60	0/5071
1	B	0.40	0/3751	0.64	0/5071
All	All	0.37	0/7502	0.62	0/10142

There are no bond length outliers.

There are no bond angle outliers.

There are no chirality outliers.

There are no planarity outliers.

### 5.2 Too-close contacts

In the following table, the Non-H and H(model) columns list the number of non-hydrogen atoms and hydrogen atoms in the chain respectively. The H(added) column lists the number of hydrogen atoms added and optimized by MolProbity. The Clashes column lists the number of clashes within the asymmetric unit, whereas Symm-Clashes lists symmetry-related clashes.

Mol	Chain	Non-H	H(model)	H(added)	Clashes	Symm-Clashes
1	A	3667	0	3647	154	0
1	B	3667	0	3647	101	0
2	A	43	0	30	1	0
2	B	43	0	30	3	0
3	A	22	0	34	1	0
3	B	22	0	34	1	0
4	A	94	0	0	15	0
4	B	187	0	0	9	0
All	All	7745	0	7422	255	0

The all-atom clashscore is defined as the number of clashes found per 1000 atoms (including hydrogen atoms). The all-atom clashscore for this structure is 17.



All (255) close contacts within the same asymmetric unit are listed below, sorted by their clash magnitude.

Atom-1	Atom-2	Interatomic distance (Å)	Clash overlap (Å)
1:A:241:LYS:HG2	1:A:248:PRO:HG3	1.41	1.00
1:B:10:THR:HA	4:B:635:HOH:O	1.61	1.00
1:A:238:LEU:HD23	1:A:254:ILE:HD13	1.55	0.89
1:A:183:GLU:HG2	1:A:205:PHE:HD2	1.38	0.87
1:B:10:THR:HG23	1:B:11:PHE:H	1.38	0.87
1:B:286:VAL:O	1:B:290:VAL:HG23	1.77	0.84
1:B:181:LEU:O	1:B:184:VAL:HG22	1.79	0.83
1:A:204:GLN:HG3	4:A:564:HOH:O	1.80	0.82
1:A:148:LEU:HD21	1:A:413:VAL:HG21	1.60	0.81
1:A:78:ALA:HB1	4:A:554:HOH:O	1.81	0.81
1:B:148:LEU:HD21	1:B:413:VAL:HG21	1.63	0.81
1:A:2:ILE:H	1:A:2:ILE:HD12	1.46	0.80
1:A:122:ILE:HG22	1:A:148:LEU:HD12	1.63	0.80
1:A:223:ARG:HH21	1:A:234:LEU:HB3	1.47	0.79
1:A:301:PRO:HB3	1:A:455:LEU:HG	1.66	0.78
1:B:116:HIS:HD2	1:B:408:HIS:HE2	1.32	0.77
1:A:141:VAL:HB	1:A:142:PRO:HD3	1.67	0.76
1:B:312:LYS:HB2	4:B:625:HOH:O	1.86	0.75
1:A:286:VAL:O	1:A:290:VAL:HG23	1.87	0.74
1:A:77:PHE:HB2	1:A:184:VAL:HG13	1.69	0.74
1:A:183:GLU:HG2	1:A:205:PHE:CD2	2.22	0.74
1:B:388:HIS:HA	1:B:391:LYS:HD3	1.69	0.74
1:A:150:LEU:HD22	1:A:174:ILE:HD11	1.69	0.73
1:A:310:GLN:HG2	4:A:571:HOH:O	1.87	0.73
1:A:332:SER:HB3	1:A:354:MET:SD	2.28	0.73
1:B:86:LEU:H	1:B:257:GLN:HE22	1.37	0.73
1:A:205:PHE:CE1	1:A:209:ILE:HD11	2.23	0.73
1:B:10:THR:HG23	1:B:11:PHE:N	2.05	0.72
1:B:58:ILE:HD12	1:B:360:LEU:HD13	1.70	0.71
1:A:426:HIS:CD2	1:A:447:LYS:HG3	2.25	0.71
1:B:329:PRO:HG3	1:B:439:LEU:HG	1.73	0.69
1:A:94:LYS:HE3	1:A:98:LYS:HD2	1.76	0.68
1:A:58:ILE:HD12	1:A:360:LEU:HD13	1.76	0.68
1:B:174:ILE:O	1:B:178:ILE:HG12	1.94	0.67
1:A:262:LEU:O	1:A:266:HIS:HD2	1.77	0.66
1:A:201:ASN:HD22	1:A:201:ASN:N	1.92	0.65
1:B:118:MET:HB3	1:B:155:LEU:HD23	1.78	0.65
1:B:290:VAL:HG22	1:B:313:TYR:CE2	2.32	0.65
1:A:242:ASP:HB3	1:A:245:THR:OG1	1.97	0.64
1:A:104:LEU:N	1:A:105:PRO:HD2	2.12	0.64

*Continued on next page...*

*Continued from previous page...*

Atom-1	Atom-2	Interatomic distance (Å)	Clash overlap (Å)
1:A:190:ARG:HG2	1:A:190:ARG:HH11	1.62	0.64
1:A:9:LYS:HE2	1:A:11:PHE:HE1	1.61	0.63
1:B:242:ASP:OD2	1:B:245:THR:HG22	1.99	0.63
1:A:15:LYS:HG3	1:A:44:ALA:CA	2.29	0.63
1:A:223:ARG:HB3	4:A:567:HOH:O	1.99	0.63
1:A:116:HIS:HE1	1:A:303:PRO:O	1.82	0.63
1:B:120:VAL:HG11	1:B:302:VAL:HG23	1.81	0.62
1:A:436:THR:O	1:A:437:LEU:HB2	1.99	0.62
1:A:216:VAL:O	1:A:220:ILE:HG12	1.99	0.62
1:A:185:MET:HB2	1:A:437:LEU:HD12	1.82	0.62
1:B:333:LEU:HB2	1:B:353:VAL:HG23	1.81	0.62
1:B:300:ASP:HB3	1:B:301:PRO:HD2	1.81	0.61
1:A:201:ASN:N	1:A:201:ASN:ND2	2.49	0.61
1:B:47:ARG:NH1	3:B:500:140:O2	2.32	0.60
1:A:290:VAL:HG22	1:A:313:TYR:CD2	2.36	0.60
1:B:1:THR:HA	4:B:601:HOH:O	2.00	0.60
1:B:38:GLU:HG2	4:B:550:HOH:O	2.02	0.60
1:B:68:ASP:HB3	1:B:334:TYR:CE1	2.36	0.60
1:A:290:VAL:HG22	1:A:313:TYR:CE2	2.36	0.60
1:A:24:LYS:N	1:A:25:PRO:HD3	2.16	0.60
1:A:205:PHE:HE1	1:A:209:ILE:HD11	1.65	0.60
1:A:77:PHE:CB	1:A:184:VAL:HG13	2.31	0.59
1:B:10:THR:CG2	1:B:11:PHE:H	2.14	0.59
1:A:196:PRO:HA	1:A:199:ASP:OD1	2.03	0.59
1:A:1:THR:HG21	4:A:577:HOH:O	2.01	0.58
1:A:23:ASP:C	1:A:25:PRO:HD3	2.23	0.58
1:A:277:LEU:HD22	1:A:417:MET:HE1	1.87	0.57
1:B:116:HIS:CD2	1:B:408:HIS:HE2	2.18	0.57
1:B:290:VAL:HG22	1:B:313:TYR:CD2	2.40	0.57
1:B:233:LEU:HD21	1:B:261:PHE:CD2	2.39	0.57
1:B:304:SER:OG	1:B:307:GLN:HG3	2.05	0.57
1:B:228:GLU:HG2	1:B:230:SER:H	1.70	0.57
1:A:226:SER:O	1:A:228:GLU:N	2.37	0.57
1:A:15:LYS:HG3	1:A:44:ALA:HA	1.87	0.57
1:B:3:LYS:HD2	1:B:344:GLU:OE1	2.05	0.57
1:B:3:LYS:HE3	4:B:627:HOH:O	2.05	0.57
1:A:306:LYS:O	1:A:310:GLN:HG3	2.05	0.56
1:B:53:SER:HB3	1:B:359:GLN:HB3	1.88	0.56
1:B:436:THR:O	1:B:437:LEU:HB2	2.05	0.56
1:A:237:MET:HE1	1:A:257:GLN:HB2	1.86	0.56
1:B:184:VAL:HG21	1:B:437:LEU:HD11	1.86	0.56

*Continued on next page...*

*Continued from previous page...*

Atom-1	Atom-2	Interatomic distance (Å)	Clash overlap (Å)
1:A:306:LYS:HG3	4:A:537:HOH:O	2.05	0.56
1:A:103:LEU:C	1:A:105:PRO:HD2	2.26	0.56
1:A:190:ARG:HD3	1:A:198:TYR:CD1	2.41	0.56
1:A:329:PRO:HG3	1:A:439:LEU:HG	1.87	0.56
1:B:47:ARG:NH2	4:B:639:HOH:O	2.39	0.56
1:B:141:VAL:HB	1:B:142:PRO:CD	2.36	0.56
1:B:262:LEU:O	1:B:266:HIS:HD2	1.88	0.56
1:A:249:LEU:HD22	1:A:253:ASN:OD1	2.05	0.55
1:A:299:VAL:HG23	1:A:300:ASP:OD2	2.06	0.55
1:B:393:PHE:CE1	2:B:460:HEM:HBB2	2.41	0.55
1:A:295:THR:HG22	4:A:569:HOH:O	2.05	0.55
1:B:120:VAL:HG11	1:B:302:VAL:CG2	2.37	0.55
1:B:179:ARG:HB3	1:B:208:ASP:OD2	2.07	0.54
1:A:220:ILE:C	4:A:567:HOH:O	2.45	0.54
1:B:228:GLU:HG2	1:B:230:SER:CB	2.38	0.54
1:A:50:ARG:HD2	1:A:50:ARG:N	2.23	0.54
1:A:107:PHE:HZ	1:A:261:PHE:HE2	1.54	0.53
1:B:10:THR:O	1:B:11:PHE:HB2	2.08	0.53
1:B:7:GLN:HG3	1:B:41:LYS:O	2.09	0.53
1:A:162:PHE:CE1	1:A:215:LEU:HD21	2.43	0.53
1:A:254:ILE:O	1:A:258:ILE:HG13	2.09	0.53
1:A:320:GLU:OE2	1:A:320:GLU:HA	2.09	0.53
1:B:104:LEU:N	1:B:105:PRO:HD2	2.24	0.52
1:A:109:GLN:O	1:A:113:LYS:HG3	2.09	0.52
1:A:5:MET:HE1	1:A:50:ARG:HG2	1.91	0.52
1:A:237:MET:CE	1:A:257:GLN:HB2	2.40	0.52
1:B:312:LYS:HG2	1:B:316:MET:CE	2.39	0.52
1:B:429:TYR:CE2	1:B:431:LEU:HA	2.44	0.52
1:A:162:PHE:HE1	1:A:215:LEU:HD21	1.75	0.52
1:A:301:PRO:HB3	1:A:455:LEU:CG	2.39	0.52
1:A:9:LYS:HE2	1:A:11:PHE:CE1	2.45	0.51
1:A:201:ASN:ND2	1:A:201:ASN:H	2.06	0.51
1:B:320:GLU:OE2	1:B:320:GLU:HA	2.10	0.51
1:A:104:LEU:C	1:A:104:LEU:HD23	2.31	0.51
1:B:275:PHE:CE1	1:B:441:PRO:HG3	2.46	0.51
1:A:160:TYR:OH	1:A:218:LYS:HE3	2.11	0.51
1:B:329:PRO:CG	1:B:439:LEU:HG	2.40	0.51
1:B:110:GLN:HE21	1:B:110:GLN:HA	1.76	0.50
1:B:49:THR:HG21	1:B:354:MET:HE3	1.93	0.50
1:A:49:THR:HB	4:A:552:HOH:O	2.11	0.50
1:B:49:THR:HG23	4:B:502:HOH:O	2.11	0.50

*Continued on next page...*

*Continued from previous page...*

Atom-1	Atom-2	Interatomic distance (Å)	Clash overlap (Å)
1:A:16:ASN:O	1:A:19:LEU:HD23	2.12	0.50
1:A:196:PRO:O	1:A:199:ASP:OD1	2.30	0.50
1:B:329:PRO:HG3	1:B:439:LEU:CG	2.42	0.50
1:A:153:ILE:HD13	1:A:153:ILE:O	2.12	0.49
1:A:222:ASP:O	1:A:226:SER:OG	2.31	0.49
1:B:16:ASN:O	1:B:19:LEU:HB2	2.12	0.49
1:A:128:GLN:HG2	1:A:132:ARG:CZ	2.42	0.49
1:A:170:PRO:HG3	4:A:532:HOH:O	2.12	0.49
1:A:363:ASP:OD1	1:A:365:THR:N	2.45	0.49
1:B:289:LYS:HD3	1:B:313:TYR:CZ	2.47	0.49
1:A:205:PHE:O	1:A:209:ILE:HG13	2.12	0.49
1:B:10:THR:O	1:B:15:LYS:O	2.30	0.49
1:B:49:THR:HG21	1:B:354:MET:CE	2.41	0.49
1:A:289:LYS:HD3	1:A:313:TYR:CZ	2.47	0.49
1:A:21:ASN:N	1:A:189:GLN:OE1	2.46	0.49
1:A:148:LEU:CD2	1:A:413:VAL:HG21	2.37	0.49
1:A:329:PRO:O	1:A:358:PRO:HD3	2.12	0.49
1:B:9:LYS:HB3	1:B:11:PHE:CE1	2.48	0.49
1:A:86:LEU:HD11	1:A:103:LEU:HD12	1.95	0.49
1:B:162:PHE:HE1	1:B:215:LEU:HD21	1.78	0.49
1:A:435:GLU:HG2	1:A:439:LEU:CD2	2.43	0.48
1:A:272:LEU:HD13	1:A:322:LEU:HG	1.95	0.48
1:A:116:HIS:HD2	1:A:408:HIS:NE2	2.12	0.48
1:B:280:LEU:HB3	1:B:287:LEU:HD13	1.96	0.48
1:A:275:PHE:CE1	1:A:441:PRO:HG3	2.49	0.48
1:A:64:GLU:OE1	1:A:397:GLN:HG2	2.13	0.47
1:A:15:LYS:HG3	1:A:44:ALA:C	2.34	0.47
1:A:291:ALA:O	1:A:295:THR:HG23	2.15	0.47
1:A:60:GLU:OE2	1:A:342:GLY:HA2	2.14	0.47
1:A:17:LEU:N	1:A:18:PRO:HD2	2.28	0.47
1:B:130:TRP:CD2	1:B:139:ILE:HD13	2.50	0.47
1:A:180:ALA:O	1:A:184:VAL:HG23	2.15	0.47
1:A:130:TRP:CE2	1:A:139:ILE:HD13	2.50	0.47
1:A:266:HIS:CG	1:A:267:GLU:N	2.83	0.47
1:B:393:PHE:HE1	2:B:460:HEM:HBB2	1.79	0.47
1:A:38:GLU:HB2	1:A:54:SER:HB3	1.96	0.47
1:A:83:GLY:HA3	1:A:256:TYR:CE1	2.50	0.47
1:B:241:LYS:HG2	1:B:246:GLY:O	2.15	0.47
1:B:266:HIS:CG	1:B:267:GLU:N	2.84	0.46
1:A:9:LYS:O	1:A:19:LEU:HD21	2.14	0.46
1:A:221:ALA:O	1:A:224:LYS:HB2	2.15	0.46

*Continued on next page...*

*Continued from previous page...*

Atom-1	Atom-2	Interatomic distance (Å)	Clash overlap (Å)
1:B:312:LYS:HG2	1:B:316:MET:HE3	1.97	0.46
1:A:301:PRO:CB	1:A:455:LEU:HG	2.42	0.46
1:A:69:LYS:HE3	2:A:460:HEM:O1A	2.16	0.46
1:A:150:LEU:HD22	1:A:174:ILE:CD1	2.42	0.46
1:B:110:GLN:HA	1:B:110:GLN:NE2	2.31	0.46
1:B:272:LEU:HD13	1:B:322:LEU:CD2	2.46	0.46
1:A:233:LEU:HD21	1:A:261:PHE:CD2	2.51	0.45
1:A:373:GLU:OE1	1:A:375:ARG:HD3	2.16	0.45
1:A:5:MET:HA	1:A:6:PRO:HD3	1.75	0.45
1:A:104:LEU:N	1:A:105:PRO:CD	2.80	0.45
1:A:231:ASP:HA	1:A:235:THR:HG21	1.96	0.45
1:B:253:ASN:O	1:B:257:GLN:HG2	2.15	0.45
1:A:158:PHE:CE1	1:A:258:ILE:HG23	2.52	0.45
1:B:9:LYS:HB3	1:B:11:PHE:HE1	1.80	0.45
1:A:235:THR:C	1:A:237:MET:H	2.20	0.45
1:A:272:LEU:HD13	1:A:322:LEU:CD2	2.47	0.45
1:B:312:LYS:HE2	1:B:316:MET:CE	2.46	0.45
1:B:228:GLU:HG2	1:B:230:SER:HB3	2.00	0.45
1:A:226:SER:HB3	4:A:568:HOH:O	2.16	0.44
1:A:244:GLU:O	1:A:244:GLU:HG3	2.17	0.44
1:A:209:ILE:HG22	1:A:213:ASN:ND2	2.33	0.44
1:A:290:VAL:CG1	1:A:314:VAL:HG22	2.47	0.44
1:A:130:TRP:CD2	1:A:139:ILE:HD13	2.51	0.44
1:B:313:TYR:O	1:B:317:VAL:HG23	2.17	0.44
1:A:223:ARG:N	4:A:567:HOH:O	2.49	0.44
1:A:69:LYS:HA	1:A:333:LEU:HD23	2.00	0.43
1:A:49:THR:CB	4:A:552:HOH:O	2.67	0.43
1:B:20:LEU:HG	1:B:42:PHE:CZ	2.53	0.43
1:A:280:LEU:HB3	1:A:287:LEU:HD13	2.00	0.43
1:A:454:PRO:O	1:A:455:LEU:HB2	2.18	0.43
1:A:83:GLY:HA3	1:A:256:TYR:CD1	2.53	0.43
1:B:17:LEU:HB3	1:B:18:PRO:HD3	2.00	0.43
1:B:151:ASP:OD1	1:B:162:PHE:HB2	2.18	0.43
1:A:262:LEU:O	1:A:266:HIS:CD2	2.64	0.43
1:B:20:LEU:HG	1:B:42:PHE:HZ	1.83	0.43
1:B:179:ARG:NE	1:B:204:GLN:OE1	2.52	0.43
1:B:290:VAL:HG22	1:B:313:TYR:HE2	1.81	0.43
1:A:196:PRO:O	1:A:197:ALA:C	2.57	0.43
1:A:205:PHE:CD1	1:A:209:ILE:HD11	2.54	0.43
1:A:277:LEU:HD22	1:A:417:MET:CE	2.48	0.43
1:B:455:LEU:N	1:B:455:LEU:HD22	2.33	0.43

*Continued on next page...*

*Continued from previous page...*

Atom-1	Atom-2	Interatomic distance (Å)	Clash overlap (Å)
1:B:184:VAL:HG23	1:B:185:MET:N	2.32	0.43
1:B:49:THR:HG22	1:B:50:ARG:H	1.84	0.42
1:A:187:LYS:HA	1:A:190:ARG:HG3	2.00	0.42
1:A:212:MET:O	1:A:216:VAL:HG23	2.19	0.42
1:A:130:TRP:CZ2	1:A:139:ILE:HG21	2.54	0.42
1:A:190:ARG:NH1	4:A:546:HOH:O	2.53	0.42
1:B:60:GLU:OE2	1:B:342:GLY:HA2	2.19	0.42
1:B:266:HIS:HE1	4:B:620:HOH:O	2.01	0.42
1:A:118:MET:HE1	1:A:155:LEU:HG	2.00	0.42
1:B:357:ILE:HG22	1:B:361:HIS:CE1	2.54	0.42
1:B:387:GLN:O	1:B:388:HIS:HB2	2.19	0.42
1:A:14:LEU:C	1:A:15:LYS:HG2	2.39	0.42
1:A:15:LYS:O	1:A:18:PRO:HD2	2.19	0.42
1:B:118:MET:O	1:B:121:ASP:HB3	2.20	0.42
1:A:426:HIS:CE1	1:A:427:THR:HG23	2.55	0.42
1:B:265:GLY:HA2	2:B:460:HEM:C3C	2.55	0.42
1:A:61:ALA:O	1:A:333:LEU:HD13	2.20	0.42
1:A:250:ASP:O	1:A:254:ILE:HG13	2.20	0.42
1:A:17:LEU:HD21	1:A:189:GLN:O	2.20	0.41
1:A:138:TYR:CD1	1:A:138:TYR:C	2.94	0.41
1:A:219:ILE:C	1:A:221:ALA:H	2.21	0.41
1:B:64:GLU:OE2	1:B:397:GLN:HG2	2.20	0.41
1:A:434:LYS:HB2	1:A:442:GLU:HB2	2.01	0.41
1:A:2:ILE:H	1:A:2:ILE:CD1	2.15	0.41
1:B:385:ILE:HA	1:B:386:PRO:HD3	1.95	0.41
1:A:62:CYS:HB3	1:A:388:HIS:CE1	2.55	0.41
1:A:260:THR:HA	3:A:500:140:H181	2.01	0.41
1:B:312:LYS:HG2	1:B:316:MET:HE2	2.01	0.41
1:A:173:PHE:CG	1:A:215:LEU:HD22	2.55	0.41
1:A:363:ASP:CG	4:A:553:HOH:O	2.58	0.41
1:B:278:TYR:HA	1:B:444:PHE:CZ	2.55	0.41
1:B:364:LYS:C	1:B:366:ILE:H	2.24	0.41
1:A:345:TYR:HA	1:A:346:PRO:HD2	1.96	0.41
1:B:72:SER:O	1:B:76:LYS:HG3	2.21	0.41
1:A:232:ASP:O	1:A:235:THR:HB	2.20	0.41
1:A:242:ASP:C	1:A:244:GLU:H	2.24	0.41
1:A:440:LYS:HA	1:A:441:PRO:HD3	1.83	0.41
1:B:220:ILE:HG13	4:B:562:HOH:O	2.20	0.41
1:B:57:LEU:HD22	1:B:341:LEU:HG	2.03	0.41
1:B:302:VAL:HG13	1:B:302:VAL:O	2.21	0.41
1:A:147:ARG:HG2	1:A:164:SER:HB3	2.03	0.40

*Continued on next page...*

Continued from previous page...

Atom-1	Atom-2	Interatomic distance (Å)	Clash overlap (Å)
1:B:10:THR:CG2	1:B:11:PHE:N	2.75	0.40
1:A:62:CYS:HB2	1:A:388:HIS:ND1	2.37	0.40
1:A:90:TRP:HB2	1:A:93:GLU:HG3	2.02	0.40
1:B:162:PHE:CE1	1:B:215:LEU:HD21	2.55	0.40
1:B:366:ILE:HD12	1:B:386:PRO:HG2	2.04	0.40
1:A:377:GLU:O	1:A:380:GLU:HB2	2.20	0.40
1:B:223:ARG:C	1:B:225:ALA:H	2.24	0.40
1:A:16:ASN:C	1:A:18:PRO:HD2	2.42	0.40
1:A:190:ARG:HD3	1:A:198:TYR:CE1	2.57	0.40
1:B:272:LEU:HD13	1:B:322:LEU:HG	2.02	0.40

There are no symmetry-related clashes.

## 5.3 Torsion angles [i](#)

### 5.3.1 Protein backbone [i](#)

In the following table, the Percentiles column shows the percent Ramachandran outliers of the chain as a percentile score with respect to all X-ray entries followed by that with respect to entries of similar resolution.

The Analysed column shows the number of residues for which the backbone conformation was analysed, and the total number of residues.

Mol	Chain	Analysed	Favoured	Allowed	Outliers	Percentiles	
1	A	453/455 (100%)	402 (89%)	45 (10%)	6 (1%)	12	18
1	B	453/455 (100%)	421 (93%)	27 (6%)	5 (1%)	14	21
All	All	906/910 (100%)	823 (91%)	72 (8%)	11 (1%)	13	19

All (11) Ramachandran outliers are listed below:

Mol	Chain	Res	Type
1	A	86	LEU
1	A	227	GLY
1	B	9	LYS
1	A	197	ALA
1	A	243	PRO
1	B	370	ASP
1	B	224	LYS
1	A	196	PRO

Continued on next page...

*Continued from previous page...*

Mol	Chain	Res	Type
1	B	64	GLU
1	B	141	VAL
1	A	45	PRO

### 5.3.2 Protein sidechains [i](#)

In the following table, the Percentiles column shows the percent sidechain outliers of the chain as a percentile score with respect to all X-ray entries followed by that with respect to entries of similar resolution.

The Analysed column shows the number of residues for which the sidechain conformation was analysed, and the total number of residues.

Mol	Chain	Analysed	Rotameric	Outliers	Percentiles	
1	A	400/400 (100%)	383 (96%)	17 (4%)	29	44
1	B	400/400 (100%)	389 (97%)	11 (3%)	43	61
All	All	800/800 (100%)	772 (96%)	28 (4%)	36	52

All (28) residues with a non-rotameric sidechain are listed below:

Mol	Chain	Res	Type
1	A	2	ILE
1	A	4	GLU
1	A	21	ASN
1	A	88	THR
1	A	128	GLN
1	A	151	ASP
1	A	153	ILE
1	A	195	ASP
1	A	196	PRO
1	A	201	ASN
1	A	206	GLN
1	A	217	ASP
1	A	222	ASP
1	A	226	SER
1	A	250	ASP
1	A	288	GLN
1	A	356	LEU
1	B	9	LYS
1	B	19	LEU
1	B	49	THR

*Continued on next page...*



*Continued from previous page...*

<b>Mol</b>	<b>Chain</b>	<b>Res</b>	<b>Type</b>
1	B	68	ASP
1	B	104	LEU
1	B	148	LEU
1	B	204	GLN
1	B	228	GLU
1	B	241	LYS
1	B	266	HIS
1	B	353	VAL

Sometimes sidechains can be flipped to improve hydrogen bonding and reduce clashes. All (26) such sidechains are listed below:

<b>Mol</b>	<b>Chain</b>	<b>Res</b>	<b>Type</b>
1	A	7	GLN
1	A	21	ASN
1	A	100	HIS
1	A	116	HIS
1	A	201	ASN
1	A	213	ASN
1	A	229	GLN
1	A	257	GLN
1	A	266	HIS
1	A	288	GLN
1	A	388	HIS
1	A	403	GLN
1	A	426	HIS
1	B	21	ASN
1	B	95	ASN
1	B	110	GLN
1	B	116	HIS
1	B	189	GLN
1	B	201	ASN
1	B	213	ASN
1	B	257	GLN
1	B	266	HIS
1	B	288	GLN
1	B	359	GLN
1	B	388	HIS
1	B	403	GLN

### 5.3.3 RNA [i](#)

There are no RNA molecules in this entry.

## 5.4 Non-standard residues in protein, DNA, RNA chains [i](#)

There are no non-standard protein/DNA/RNA residues in this entry.

## 5.5 Carbohydrates [i](#)

There are no monosaccharides in this entry.

## 5.6 Ligand geometry [i](#)

4 ligands are modelled in this entry.

In the following table, the Counts columns list the number of bonds (or angles) for which Mogul statistics could be retrieved, the number of bonds (or angles) that are observed in the model and the number of bonds (or angles) that are defined in the Chemical Component Dictionary. The Link column lists molecule types, if any, to which the group is linked. The Z score for a bond length (or angle) is the number of standard deviations the observed value is removed from the expected value. A bond length (or angle) with  $|Z| > 2$  is considered an outlier worth inspection. RMSZ is the root-mean-square of all Z scores of the bond lengths (or angles).

Mol	Type	Chain	Res	Link	Bond lengths			Bond angles		
					Counts	RMSZ	# Z  > 2	Counts	RMSZ	# Z  > 2
3	140	B	500	-	21,21,21	1.44	2 (9%)	22,22,22	1.12	1 (4%)
3	140	A	500	-	21,21,21	0.86	1 (4%)	22,22,22	0.83	0
2	HEM	A	460	1	41,50,50	1.48	6 (14%)	45,82,82	1.06	2 (4%)
2	HEM	B	460	1	41,50,50	1.34	3 (7%)	45,82,82	1.36	6 (13%)

In the following table, the Chirals column lists the number of chiral outliers, the number of chiral centers analysed, the number of these observed in the model and the number defined in the Chemical Component Dictionary. Similar counts are reported in the Torsion and Rings columns. '-' means no outliers of that kind were identified.

Mol	Type	Chain	Res	Link	Chirals	Torsions	Rings
3	140	B	500	-	-	6/20/20/20	-
3	140	A	500	-	-	5/20/20/20	-
2	HEM	A	460	1	-	5/12/54/54	-
2	HEM	B	460	1	-	4/12/54/54	-

All (12) bond length outliers are listed below:

Mol	Chain	Res	Type	Atoms	Z	Observed(Å)	Ideal(Å)
2	A	460	HEM	C3C-CAC	-4.51	1.38	1.47
3	B	500	140	C2-C1	4.26	1.60	1.51
3	B	500	140	C4-C3	3.77	1.58	1.51
2	B	460	HEM	CAB-C3B	-3.68	1.37	1.47
2	B	460	HEM	C3C-CAC	-3.40	1.40	1.47
2	A	460	HEM	CAB-C3B	-2.75	1.39	1.47
2	A	460	HEM	CHB-C1B	2.68	1.41	1.35
3	A	500	140	C2-C1	2.52	1.56	1.51
2	A	460	HEM	CHA-C4D	2.42	1.41	1.35
2	A	460	HEM	C4A-NA	2.28	1.40	1.36
2	A	460	HEM	C1A-NA	2.26	1.40	1.36
2	B	460	HEM	C1A-NA	2.18	1.40	1.36

All (9) bond angle outliers are listed below:

Mol	Chain	Res	Type	Atoms	Z	Observed(°)	Ideal(°)
2	B	460	HEM	CMB-C2B-C1B	3.23	129.97	125.04
3	B	500	140	C5-C4-C3	3.12	122.03	113.26
2	B	460	HEM	C4B-C3B-C2B	3.08	109.56	107.11
2	B	460	HEM	CMA-C3A-C4A	-2.57	124.51	128.46
2	A	460	HEM	C2D-C1D-ND	2.43	112.79	109.88
2	B	460	HEM	C4C-CHD-C1D	2.40	125.72	122.56
2	B	460	HEM	C3B-C2B-C1B	-2.40	104.71	106.49
2	B	460	HEM	C4B-CHC-C1C	2.40	125.72	122.56
2	A	460	HEM	C4C-CHD-C1D	2.32	125.61	122.56

There are no chirality outliers.

All (20) torsion outliers are listed below:

Mol	Chain	Res	Type	Atoms
2	B	460	HEM	C2B-C3B-CAB-CBB
2	B	460	HEM	C4B-C3B-CAB-CBB
3	A	500	140	C3-C4-C5-C6
3	A	500	140	C9-C10-C11-C12
3	B	500	140	C6-C7-C8-C9
3	A	500	140	C11-C12-C13-C14
3	A	500	140	C10-C11-C12-C13
3	B	500	140	C7-C8-C9-C10
3	B	500	140	C13-C14-C15-C16
3	B	500	140	C9-C10-C11-C12
3	B	500	140	C10-C11-C12-C13

*Continued on next page...*

Continued from previous page...

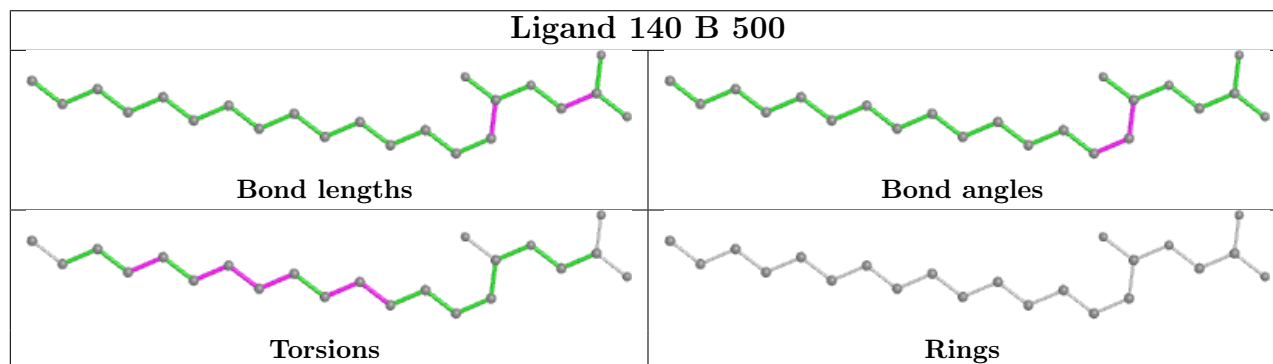
Mol	Chain	Res	Type	Atoms
3	A	500	140	C13-C14-C15-C16
2	A	460	HEM	CAA-CBA-CGA-O2A
2	B	460	HEM	CAD-CBD-CGD-O2D
3	B	500	140	C11-C12-C13-C14
2	A	460	HEM	C2B-C3B-CAB-CBB
2	A	460	HEM	CAD-CBD-CGD-O2D
2	A	460	HEM	CAA-CBA-CGA-O1A
2	A	460	HEM	CAD-CBD-CGD-O1D
2	B	460	HEM	CAD-CBD-CGD-O1D

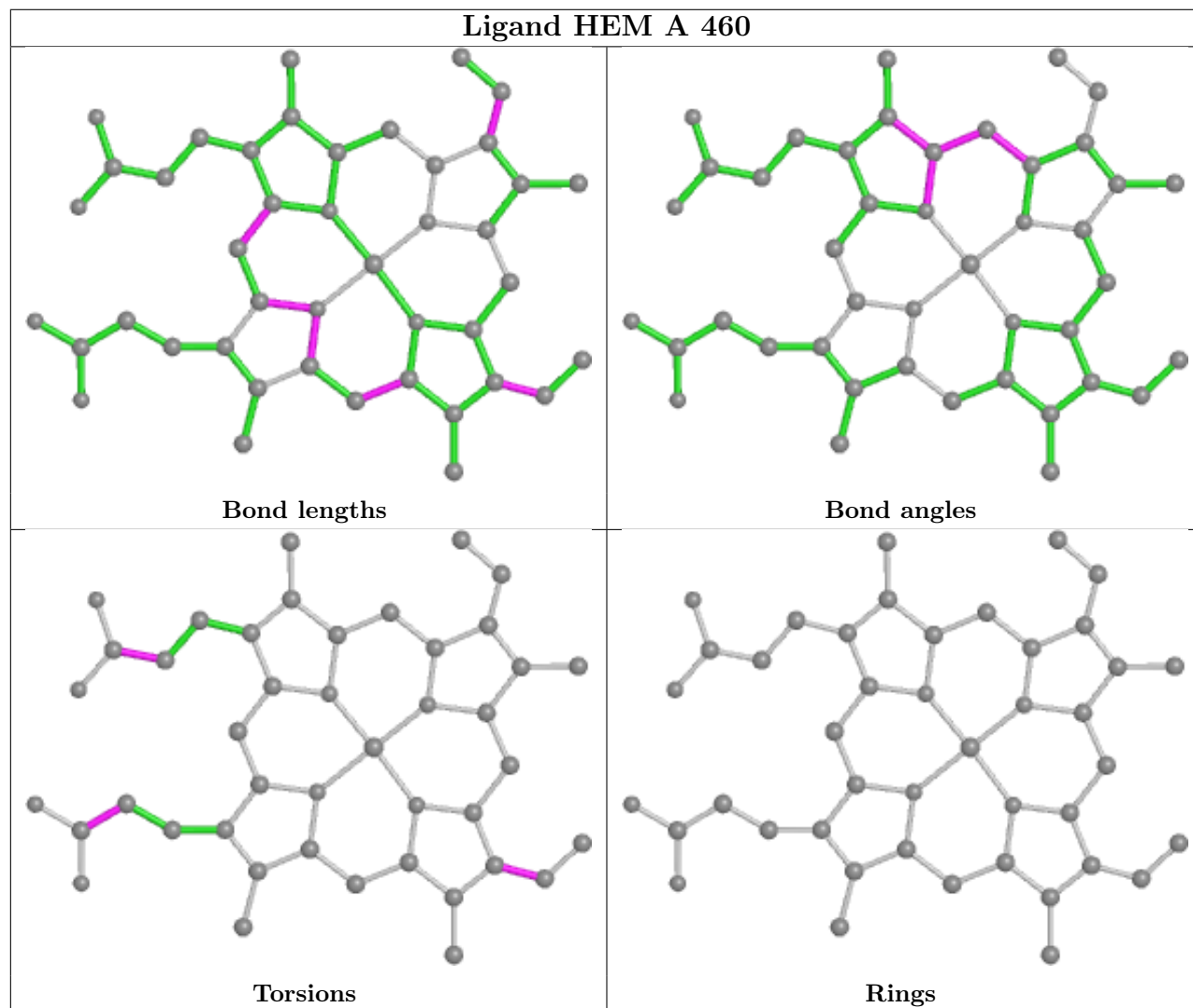
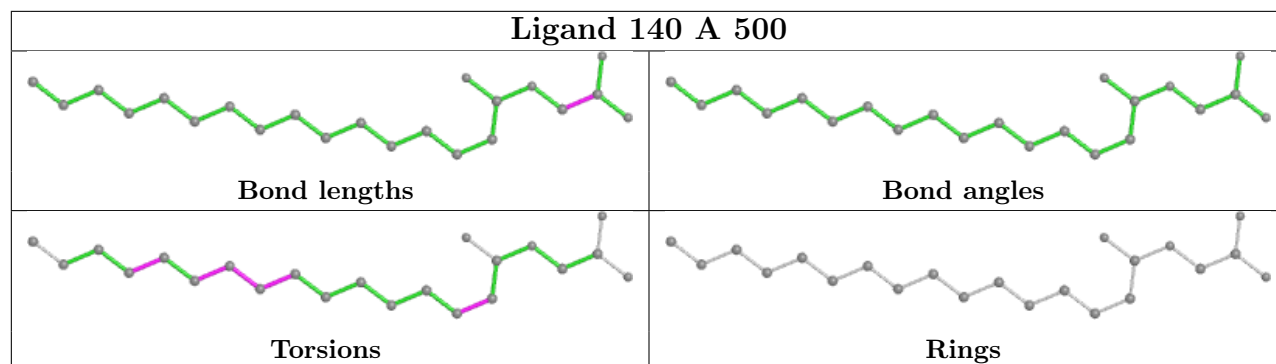
There are no ring outliers.

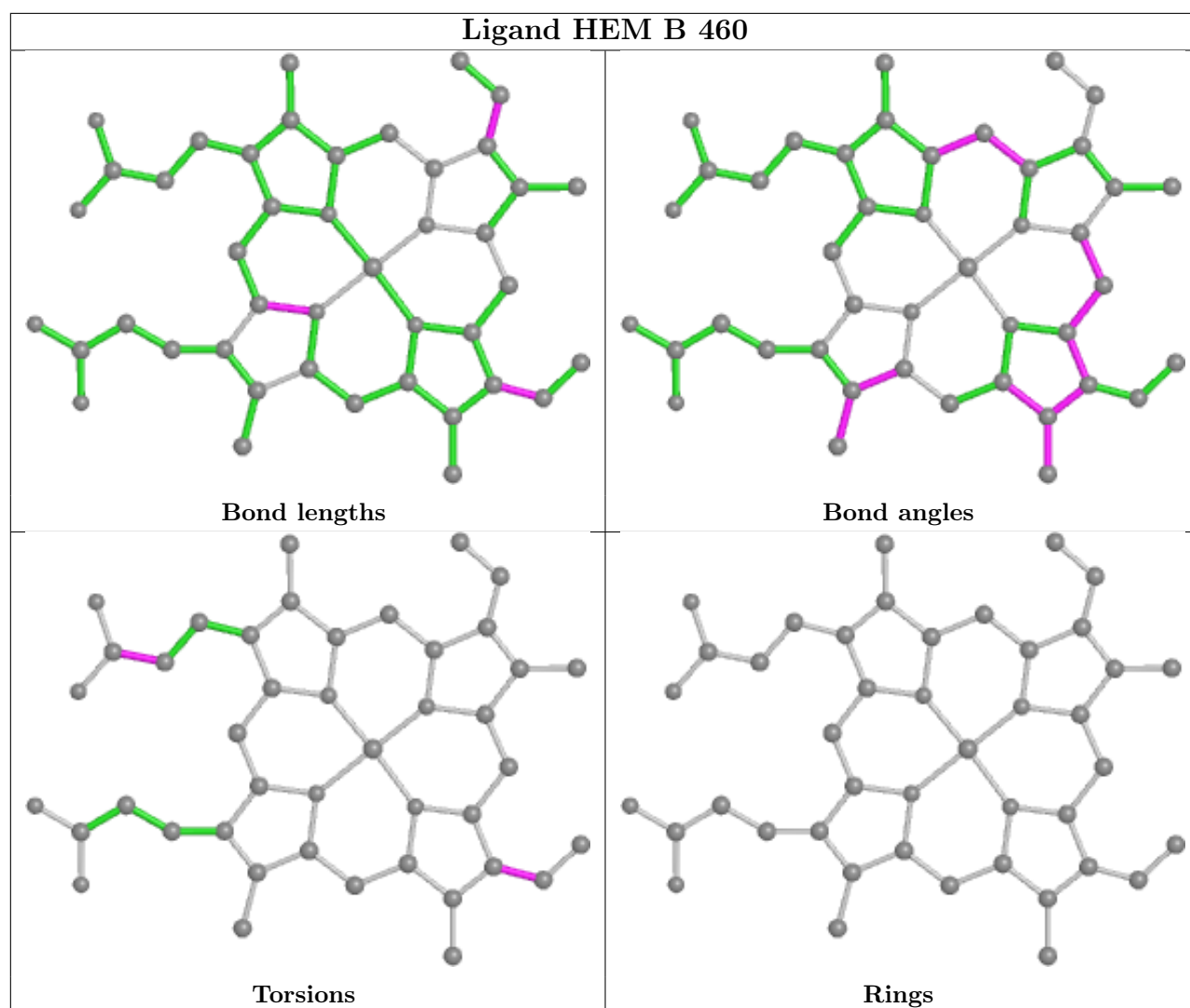
4 monomers are involved in 6 short contacts:

Mol	Chain	Res	Type	Clashes	Symm-Clashes
3	B	500	140	1	0
3	A	500	140	1	0
2	A	460	HEM	1	0
2	B	460	HEM	3	0

The following is a two-dimensional graphical depiction of Mogul quality analysis of bond lengths, bond angles, torsion angles, and ring geometry for all instances of the Ligand of Interest. In addition, ligands with molecular weight > 250 and outliers as shown on the validation Tables will also be included. For torsion angles, if less than 5% of the Mogul distribution of torsion angles is within 10 degrees of the torsion angle in question, then that torsion angle is considered an outlier. Any bond that is central to one or more torsion angles identified as an outlier by Mogul will be highlighted in the graph. For rings, the root-mean-square deviation (RMSD) between the ring in question and similar rings identified by Mogul is calculated over all ring torsion angles. If the average RMSD is greater than 60 degrees and the minimal RMSD between the ring in question and any Mogul-identified rings is also greater than 60 degrees, then that ring is considered an outlier. The outliers are highlighted in purple. The color gray indicates Mogul did not find sufficient equivalents in the CSD to analyse the geometry.







## 5.7 Other polymers [i](#)

There are no such residues in this entry.

## 5.8 Polymer linkage issues [i](#)

There are no chain breaks in this entry.

## 6 Fit of model and data [i](#)

### 6.1 Protein, DNA and RNA chains [i](#)

In the following table, the column labelled ‘#RSRZ > 2’ contains the number (and percentage) of RSRZ outliers, followed by percent RSRZ outliers for the chain as percentile scores relative to all X-ray entries and entries of similar resolution. The OWAB column contains the minimum, median, 95<sup>th</sup> percentile and maximum values of the occupancy-weighted average B-factor per residue. The column labelled ‘Q < 0.9’ lists the number of (and percentage) of residues with an average occupancy less than 0.9.

Mol	Chain	Analysed	<RSRZ>	#RSRZ>2	OWAB(Å <sup>2</sup> )	Q<0.9
1	A	455/455 (100%)	0.01	16 (3%) 44 40	35, 64, 114, 133	0
1	B	455/455 (100%)	-0.44	1 (0%) 95 96	33, 47, 68, 102	0
All	All	910/910 (100%)	-0.22	17 (1%) 66 63	33, 54, 102, 133	0

All (17) RSRZ outliers are listed below:

Mol	Chain	Res	Type	RSRZ
1	A	229	GLN	4.5
1	A	227	GLY	4.4
1	B	229	GLN	4.3
1	A	102	ILE	4.1
1	A	197	ALA	3.6
1	A	196	PRO	3.5
1	A	14	LEU	3.4
1	A	193	PRO	2.6
1	A	240	GLY	2.4
1	A	46	GLY	2.3
1	A	231	ASP	2.3
1	A	239	ASN	2.2
1	A	45	PRO	2.2
1	A	13	GLU	2.1
1	A	244	GLU	2.1
1	A	228	GLU	2.1
1	A	234	LEU	2.1

### 6.2 Non-standard residues in protein, DNA, RNA chains [i](#)

There are no non-standard protein/DNA/RNA residues in this entry.

### 6.3 Carbohydrates [i](#)

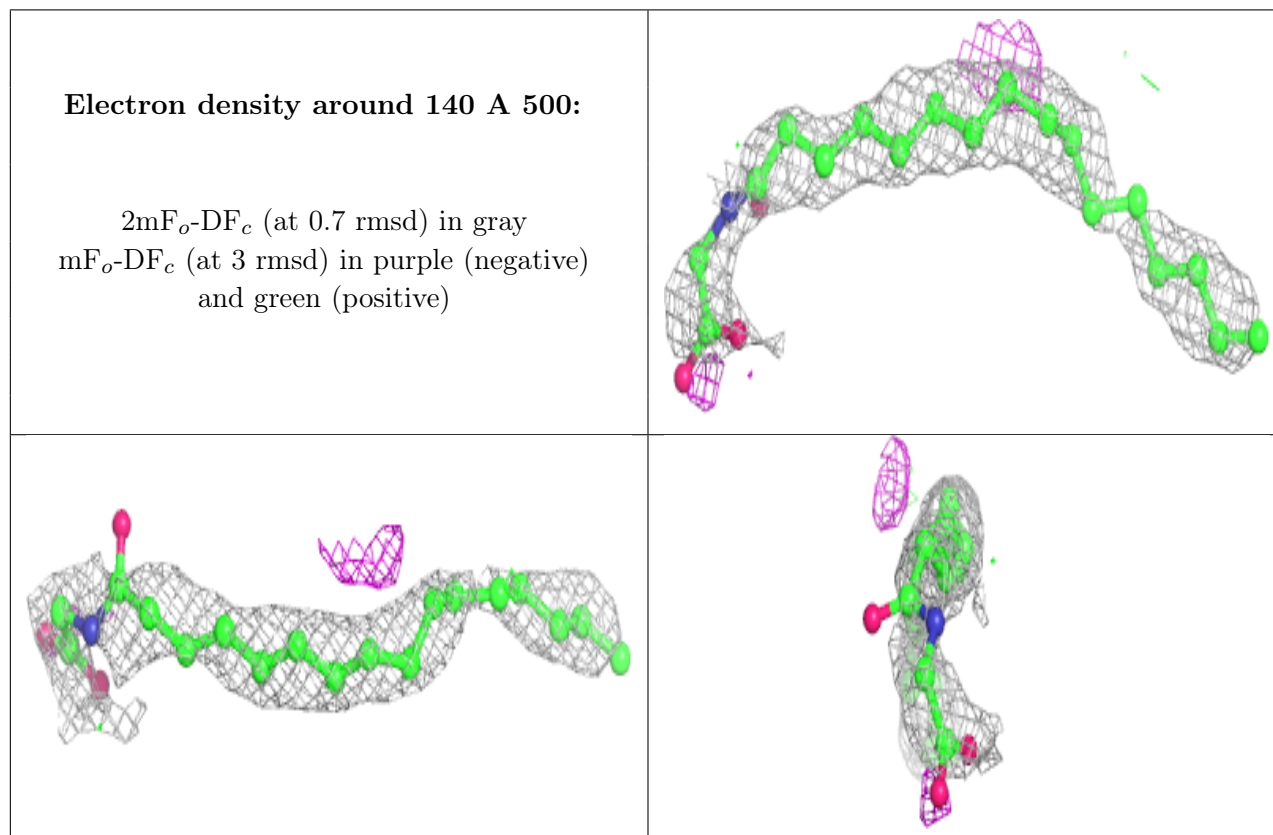
There are no monosaccharides in this entry.

### 6.4 Ligands [i](#)

In the following table, the Atoms column lists the number of modelled atoms in the group and the number defined in the chemical component dictionary. The B-factors column lists the minimum, median, 95<sup>th</sup> percentile and maximum values of B factors of atoms in the group. The column labelled 'Q< 0.9' lists the number of atoms with occupancy less than 0.9.

Mol	Type	Chain	Res	Atoms	RSCC	RSR	B-factors(Å <sup>2</sup> )	Q<0.9
3	140	A	500	22/22	0.77	0.37	61,66,95,96	0
3	140	B	500	22/22	0.85	0.27	38,60,85,86	0
2	HEM	A	460	43/43	0.96	0.14	54,58,62,63	0
2	HEM	B	460	43/43	0.98	0.16	35,39,41,42	0

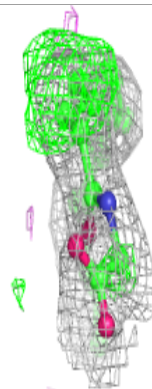
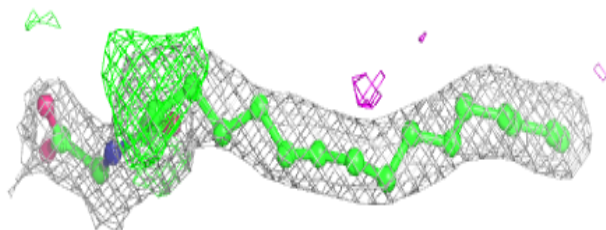
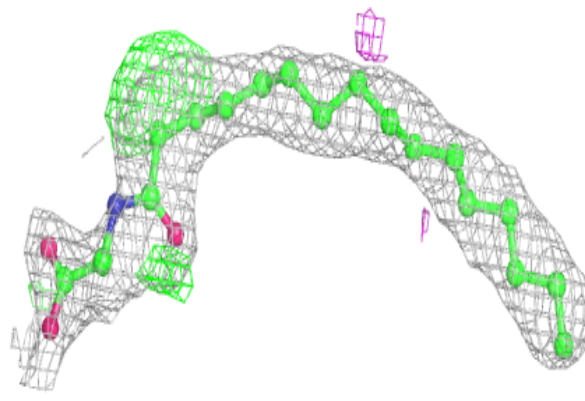
The following is a graphical depiction of the model fit to experimental electron density of all instances of the Ligand of Interest. In addition, ligands with molecular weight > 250 and outliers as shown on the geometry validation Tables will also be included. Each fit is shown from different orientation to approximate a three-dimensional view.

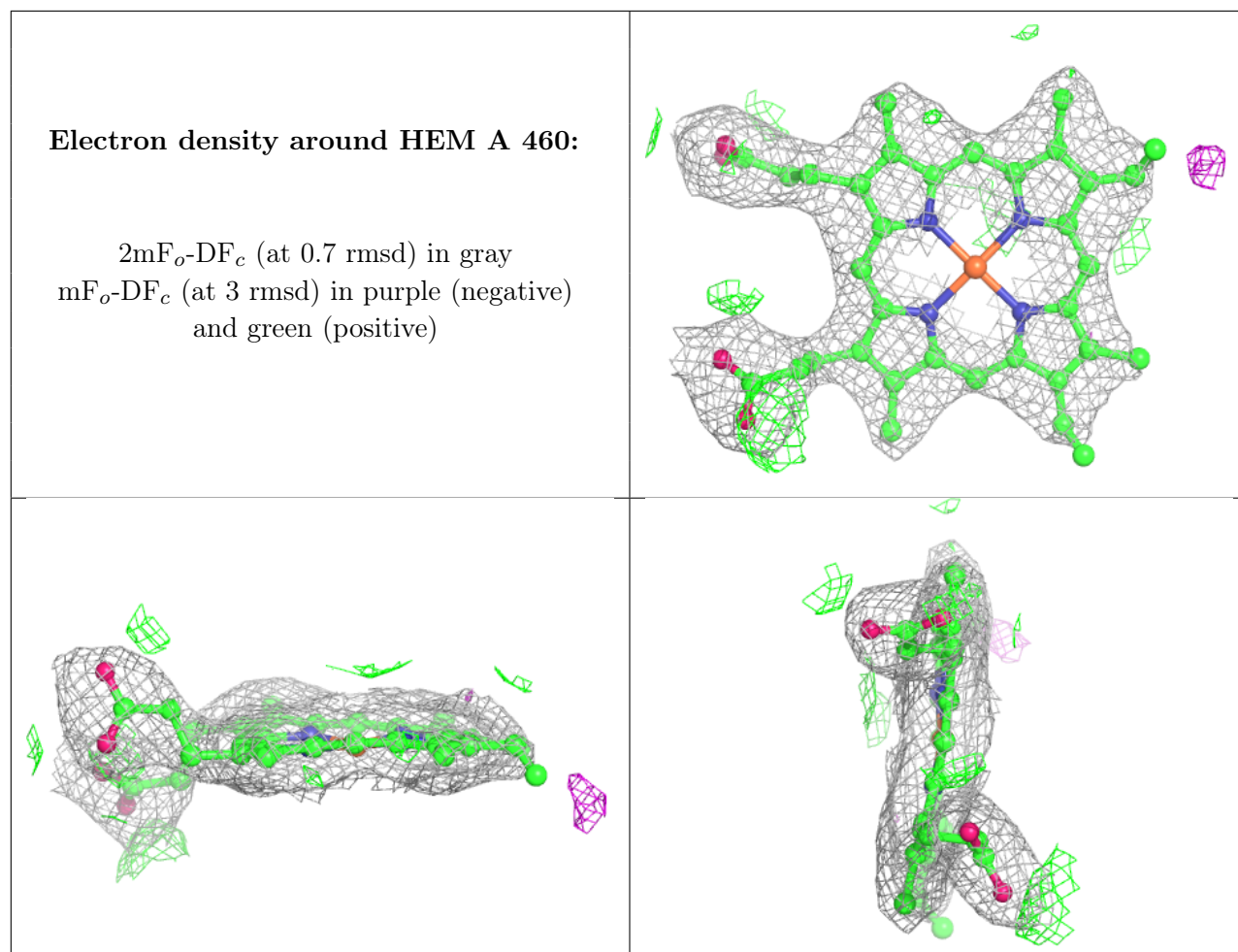


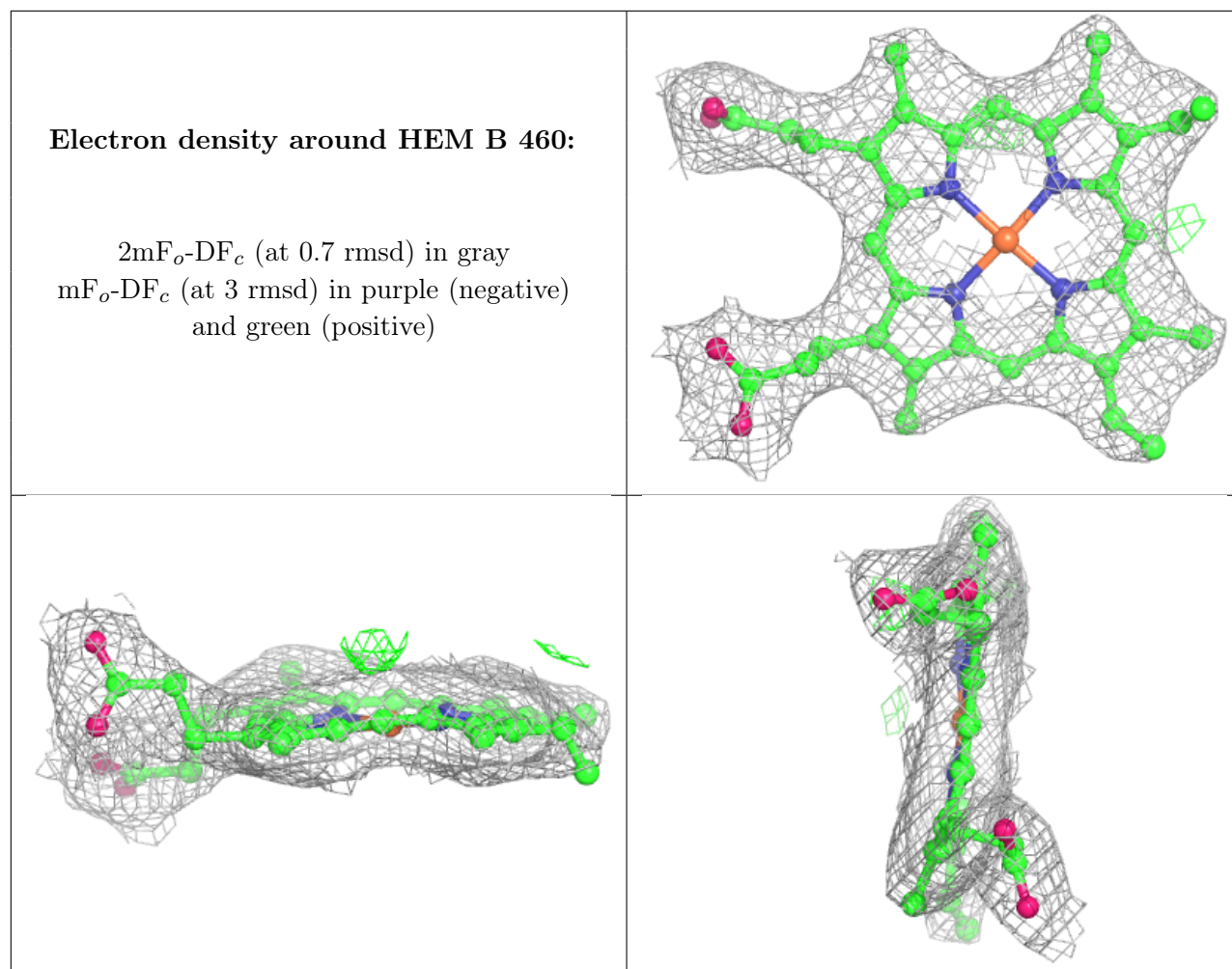


**Electron density around 140 B 500:**

$2mF_o-DF_c$  (at 0.7 rnsd) in gray  
 $mF_o-DF_c$  (at 3 rnsd) in purple (negative)  
and green (positive)







## 6.5 Other polymers [i](#)

There are no such residues in this entry.