



Full wwPDB X-ray Structure Validation Report ⓘ

Sep 26, 2023 – 09:53 PM EDT

PDB ID : 6C9H
Title : non-phosphorylated AMP-activated protein kinase bound to pharmacological activator R734
Authors : Yan, Y.; Zhou, X.E.; Novick, S.; Shaw, S.J.; Li, Y.; Hitoshi, Y.; Brunzelle, J.S.; Griffin, P.R.; Xu, H.E.; Melcher, K.
Deposited on : 2018-01-26
Resolution : 2.65 Å(reported)

This is a Full wwPDB X-ray Structure Validation Report for a publicly released PDB entry.

We welcome your comments at validation@mail.wwpdb.org

A user guide is available at

<https://www.wwpdb.org/validation/2017/XrayValidationReportHelp>

with specific help available everywhere you see the ⓘ symbol.

The types of validation reports are described at

<http://www.wwpdb.org/validation/2017/FAQs#types>.

The following versions of software and data (see [references ⓘ](#)) were used in the production of this report:

MolProbity : 4.02b-467
Mogul : 1.8.5 (274361), CSD as541be (2020)
Xtrriage (Phenix) : 1.13
EDS : 2.35.1
buster-report : 1.1.7 (2018)
Percentile statistics : 20191225.v01 (using entries in the PDB archive December 25th 2019)
Refmac : 5.8.0158
CCP4 : 7.0.044 (Gargrove)
Ideal geometry (proteins) : Engh & Huber (2001)
Ideal geometry (DNA, RNA) : Parkinson et al. (1996)
Validation Pipeline (wwPDB-VP) : 2.35.1

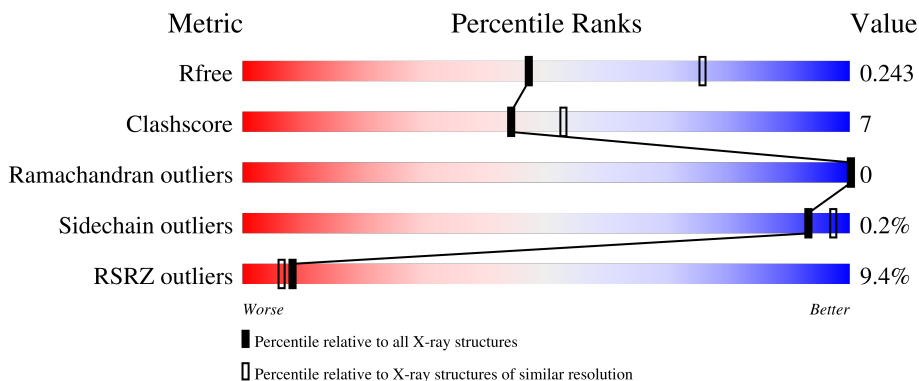
1 Overall quality at a glance

The following experimental techniques were used to determine the structure:

X-RAY DIFFRACTION

The reported resolution of this entry is 2.65 Å.

Percentile scores (ranging between 0-100) for global validation metrics of the entry are shown in the following graphic. The table shows the number of entries on which the scores are based.



Metric	Whole archive (#Entries)	Similar resolution (#Entries, resolution range(Å))
R_{free}	130704	1332 (2.68-2.64)
Clashscore	141614	1374 (2.68-2.64)
Ramachandran outliers	138981	1349 (2.68-2.64)
Sidechain outliers	138945	1349 (2.68-2.64)
RSRZ outliers	127900	1318 (2.68-2.64)

The table below summarises the geometric issues observed across the polymeric chains and their fit to the electron density. The red, orange, yellow and green segments of the lower bar indicate the fraction of residues that contain outliers for ≥ 3 , 2, 1 and 0 types of geometric quality criteria respectively. A grey segment represents the fraction of residues that are not modelled. The numeric value for each fraction is indicated below the corresponding segment, with a dot representing fractions $\leq 5\%$. The upper red bar (where present) indicates the fraction of residues that have poor fit to the electron density. The numeric value is given above the bar.

Mol	Chain	Length	Quality of chain
1	A	494	
2	B	204	
3	C	331	

2 Entry composition i

There are 7 unique types of molecules in this entry. The entry contains 7501 atoms, of which 0 are hydrogens and 0 are deuteriums.

In the tables below, the ZeroOcc column contains the number of atoms modelled with zero occupancy, the AltConf column contains the number of residues with at least one atom in alternate conformation and the Trace column contains the number of residues modelled with at most 2 atoms.

- Molecule 1 is a protein called 5'-AMP-activated protein kinase catalytic subunit alpha-1.

Mol	Chain	Residues	Atoms					ZeroOcc	AltConf	Trace
			Total	C	N	O	S			
1	A	435	3532	2262	616	634	20	0	0	0

There are 10 discrepancies between the modelled and reference sequences:

Chain	Residue	Modelled	Actual	Comment	Reference
A	3	MET	-	expression tag	UNP Q13131
A	4	GLY	-	expression tag	UNP Q13131
A	5	HIS	-	expression tag	UNP Q13131
A	6	HIS	-	expression tag	UNP Q13131
A	7	HIS	-	expression tag	UNP Q13131
A	8	HIS	-	expression tag	UNP Q13131
A	9	HIS	-	expression tag	UNP Q13131
A	10	HIS	-	expression tag	UNP Q13131
A	11	GLY	-	expression tag	UNP Q13131
A	12	SER	-	expression tag	UNP Q13131

- Molecule 2 is a protein called 5'-AMP-activated protein kinase subunit beta-1.

Mol	Chain	Residues	Atoms					ZeroOcc	AltConf	Trace
			Total	C	N	O	S			
2	B	168	1341	868	227	242	4	0	0	0

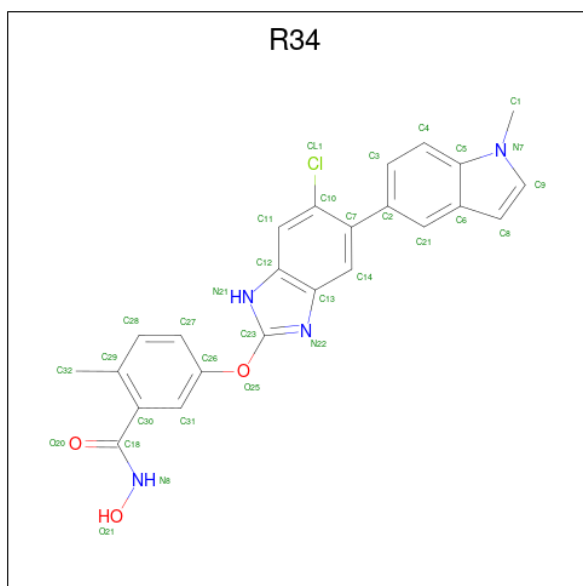
There are 2 discrepancies between the modelled and reference sequences:

Chain	Residue	Modelled	Actual	Comment	Reference
B	67	MET	-	expression tag	UNP Q9Y478
B	108	ASP	SER	engineered mutation	UNP Q9Y478

- Molecule 3 is a protein called 5'-AMP-activated protein kinase subunit gamma-1.

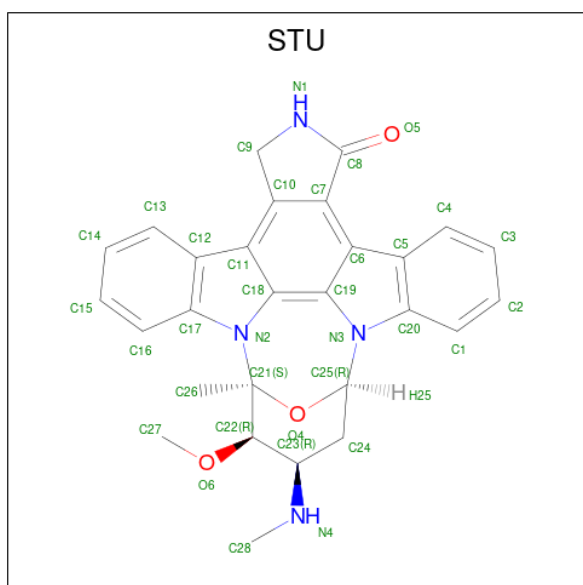
Mol	Chain	Residues	Atoms					ZeroOcc	AltConf	Trace
			Total	C	N	O	S			
3	C	299	2412	1568	400	437	7	0	0	0

- Molecule 4 is 5-[[6-chloro-5-(1-methyl-1H-indol-5-yl)-1H-benzimidazol-2-yl]oxy]-N-hydroxy-2-methylbenzamide (three-letter code: R34) (formula: $C_{24}H_{19}ClN_4O_3$).



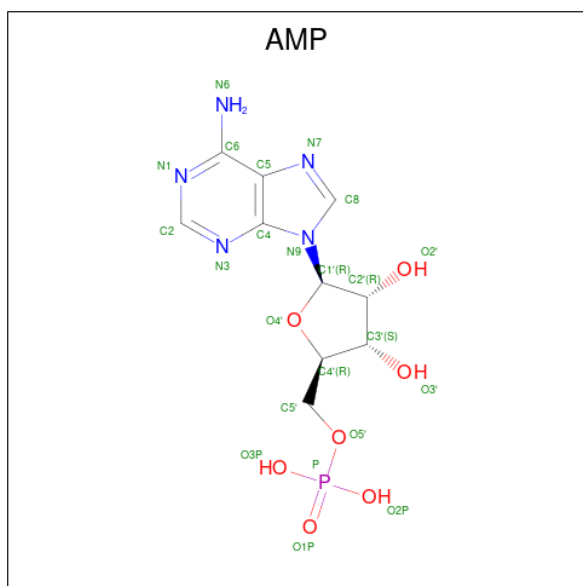
Mol	Chain	Residues	Atoms					ZeroOcc	AltConf
			Total	C	Cl	N	O		
4	A	1	32	24	1	4	3	0	0

- Molecule 5 is STAUROSPORINE (three-letter code: STU) (formula: $C_{28}H_{26}N_4O_3$).



Mol	Chain	Residues	Atoms				ZeroOcc	AltConf
			Total	C	N	O		
5	A	1	35	28	4	3	0	0

- Molecule 6 is ADENOSINE MONOPHOSPHATE (three-letter code: AMP) (formula: C₁₀H₁₄N₅O₇P).



Mol	Chain	Residues	Atoms					ZeroOcc	AltConf
			Total	C	N	O	P		
6	C	1	23	10	5	7	1	0	0
6	C	1	23	10	5	7	1	0	0
6	C	1	23	10	5	7	1	0	0

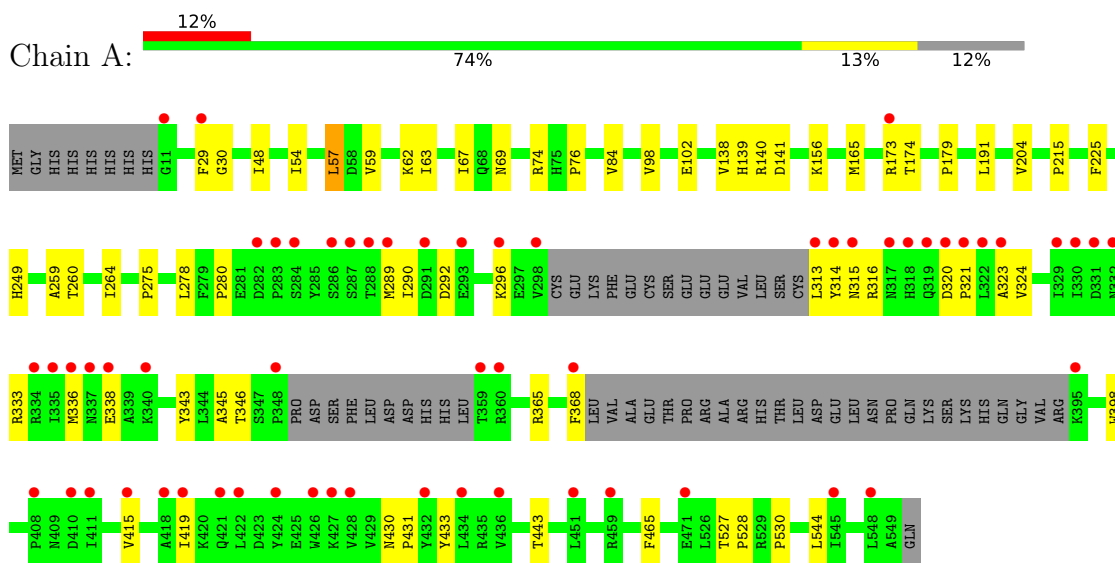
- Molecule 7 is water.

Mol	Chain	Residues	Atoms		ZeroOcc	AltConf
7	A	49	Total	O	0	0
			49	49		
7	B	19	Total	O	0	0
			19	19		
7	C	12	Total	O	0	0
			12	12		

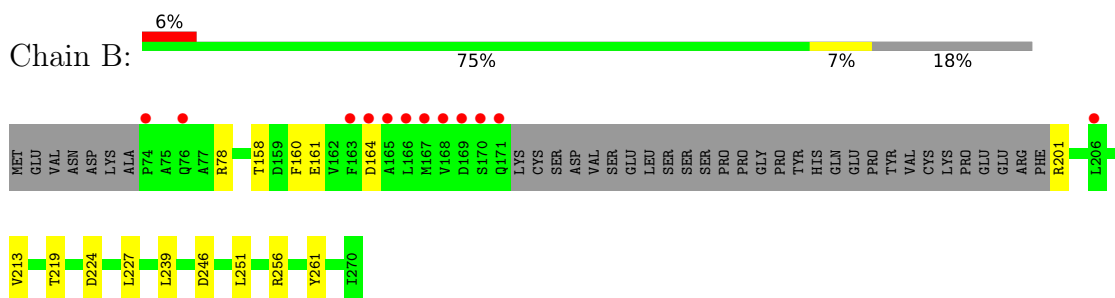
3 Residue-property plots

These plots are drawn for all protein, RNA, DNA and oligosaccharide chains in the entry. The first graphic for a chain summarises the proportions of the various outlier classes displayed in the second graphic. The second graphic shows the sequence view annotated by issues in geometry and electron density. Residues are color-coded according to the number of geometric quality criteria for which they contain at least one outlier: green = 0, yellow = 1, orange = 2 and red = 3 or more. A red dot above a residue indicates a poor fit to the electron density ($RSRZ > 2$). Stretches of 2 or more consecutive residues without any outlier are shown as a green connector. Residues present in the sample, but not in the model, are shown in grey.

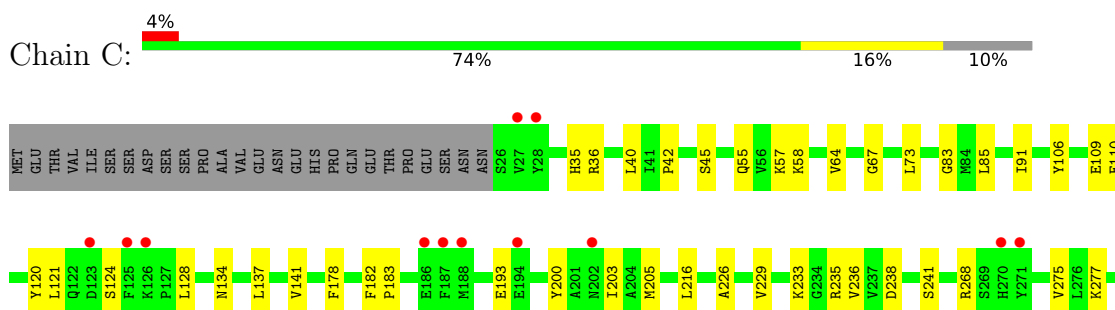
- Molecule 1: 5'-AMP-activated protein kinase catalytic subunit alpha-1

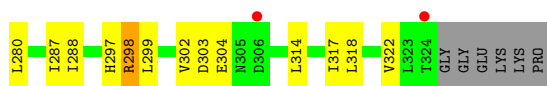


- Molecule 2: 5'-AMP-activated protein kinase subunit beta-1



- Molecule 3: 5'-AMP-activated protein kinase subunit gamma-1





4 Data and refinement statistics

Property	Value	Source
Space group	P 61 2 2	Depositor
Cell constants a, b, c, α , β , γ	124.02Å 124.02Å 404.18Å 90.00° 90.00° 120.00°	Depositor
Resolution (Å)	49.88 – 2.65 49.88 – 2.65	Depositor EDS
% Data completeness (in resolution range)	93.2 (49.88-2.65) 93.3 (49.88-2.65)	Depositor EDS
R_{merge}	0.57	Depositor
R_{sym}	(Not available)	Depositor
$\langle I/\sigma(I) \rangle$ ¹	2.13 (at 2.65Å)	Xtrriage
Refinement program	PHENIX (1.13_2998: ???)	Depositor
R, R_{free}	0.213 , 0.242 0.213 , 0.243	Depositor DCC
R_{free} test set	3679 reflections (7.24%)	wwPDB-VP
Wilson B-factor (Å ²)	54.1	Xtrriage
Anisotropy	0.446	Xtrriage
Bulk solvent k_{sol} (e/Å ³), B_{sol} (Å ²)	0.32 , 63.9	EDS
L-test for twinning ²	$\langle L \rangle = 0.49$, $\langle L^2 \rangle = 0.32$	Xtrriage
Estimated twinning fraction	No twinning to report.	Xtrriage
F_o, F_c correlation	0.93	EDS
Total number of atoms	7501	wwPDB-VP
Average B, all atoms (Å ²)	76.0	wwPDB-VP

Xtrriage's analysis on translational NCS is as follows: *The largest off-origin peak in the Patterson function is 4.34% of the height of the origin peak. No significant pseudotranslation is detected.*

¹Intensities estimated from amplitudes.

²Theoretical values of $\langle |L| \rangle$, $\langle L^2 \rangle$ for acentric reflections are 0.5, 0.333 respectively for untwinned datasets, and 0.375, 0.2 for perfectly twinned datasets.

5 Model quality [i](#)

5.1 Standard geometry [i](#)

Bond lengths and bond angles in the following residue types are not validated in this section: R34, STU, AMP

The Z score for a bond length (or angle) is the number of standard deviations the observed value is removed from the expected value. A bond length (or angle) with $|Z| > 5$ is considered an outlier worth inspection. RMSZ is the root-mean-square of all Z scores of the bond lengths (or angles).

Mol	Chain	Bond lengths		Bond angles	
		RMSZ	# Z >5	RMSZ	# Z >5
1	A	0.25	0/3615	0.42	0/4885
2	B	0.25	0/1379	0.44	0/1880
3	C	0.26	0/2463	0.40	0/3344
All	All	0.25	0/7457	0.42	0/10109

There are no bond length outliers.

There are no bond angle outliers.

There are no chirality outliers.

There are no planarity outliers.

5.2 Too-close contacts [i](#)

In the following table, the Non-H and H(model) columns list the number of non-hydrogen atoms and hydrogen atoms in the chain respectively. The H(added) column lists the number of hydrogen atoms added and optimized by MolProbity. The Clashes column lists the number of clashes within the asymmetric unit, whereas Symm-Clashes lists symmetry-related clashes.

Mol	Chain	Non-H	H(model)	H(added)	Clashes	Symm-Clashes
1	A	3532	0	3552	53	0
2	B	1341	0	1342	16	0
3	C	2412	0	2483	44	0
4	A	32	0	0	0	0
5	A	35	0	26	2	0
6	C	69	0	36	2	0
7	A	49	0	0	0	0
7	B	19	0	0	0	0
7	C	12	0	0	0	0
All	All	7501	0	7439	98	0

The all-atom clashscore is defined as the number of clashes found per 1000 atoms (including hydrogen atoms). The all-atom clashscore for this structure is 7.

All (98) close contacts within the same asymmetric unit are listed below, sorted by their clash magnitude.

Atom-1	Atom-2	Interatomic distance (Å)	Clash overlap (Å)
1:A:314:TYR:HB3	1:A:323:ALA:HB2	1.54	0.90
3:C:141:VAL:HG11	3:C:322:VAL:HG21	1.66	0.77
1:A:365:ARG:HH22	2:B:219:THR:HB	1.53	0.73
3:C:238:ASP:OD1	3:C:268:ARG:NH2	2.22	0.72
1:A:289:MET:HG2	1:A:343:TYR:HB3	1.71	0.72
1:A:98:VAL:HG11	1:A:156:LYS:HG3	1.73	0.70
3:C:268:ARG:NH1	6:C:1102:AMP:O2'	2.23	0.70
2:B:256:ARG:HE	2:B:261:TYR:HE1	1.43	0.67
3:C:141:VAL:CG1	3:C:322:VAL:HG21	2.26	0.66
3:C:106:TYR:O	3:C:110:GLU:HG2	1.95	0.66
3:C:120:TYR:HD2	3:C:121:LEU:HD11	1.61	0.66
1:A:69:ASN:ND2	1:A:165:MET:SD	2.70	0.63
1:A:290:ILE:HG23	1:A:333:ARG:HG3	1.79	0.63
3:C:182:PHE:HA	3:C:183:PRO:C	2.20	0.62
3:C:277:LYS:HD3	3:C:302:VAL:HG21	1.82	0.62
1:A:345:ALA:HB1	2:B:219:THR:HG21	1.82	0.61
1:A:29:PHE:CD1	1:A:54:ILE:HG22	2.35	0.61
1:A:320:ASP:OD1	1:A:321:PRO:HD2	2.01	0.61
1:A:29:PHE:CZ	1:A:59:VAL:HG21	2.36	0.60
3:C:287:ILE:HG23	3:C:299:LEU:HD12	1.85	0.59
1:A:30:GLY:HA3	1:A:48:ILE:O	2.01	0.59
1:A:289:MET:HB3	3:C:178:PHE:CZ	2.39	0.58
1:A:289:MET:HB3	3:C:178:PHE:HZ	1.69	0.58
1:A:29:PHE:CZ	1:A:57:LEU:HD11	2.39	0.57
1:A:173:ARG:HB2	1:A:191:LEU:HD23	1.86	0.56
3:C:120:TYR:HD2	3:C:121:LEU:CD1	2.18	0.56
1:A:430:ASN:HB3	1:A:433:TYR:HB3	1.87	0.56
1:A:431:PRO:HD2	2:B:201:ARG:HH11	1.71	0.55
3:C:40:LEU:HD13	3:C:137:LEU:HD21	1.89	0.55
1:A:320:ASP:O	1:A:324:VAL:HG23	2.07	0.55
3:C:141:VAL:HG11	3:C:322:VAL:CG2	2.36	0.55
2:B:246:ASP:HB3	3:C:58:LYS:NZ	2.22	0.54
3:C:57:LYS:HD3	3:C:109:GLU:HG2	1.90	0.54
1:A:74:ARG:NH1	1:A:313:LEU:HD22	2.23	0.53
1:A:138:VAL:HG12	1:A:140:ARG:HG2	1.90	0.53
3:C:36:ARG:HD2	3:C:134:ASN:HA	1.91	0.53
3:C:193:GLU:HB2	3:C:280:LEU:HB3	1.89	0.53

Continued on next page...

Continued from previous page...

Atom-1	Atom-2	Interatomic distance (Å)	Clash overlap (Å)
1:A:140:ARG:HH12	1:A:174:THR:HB	1.74	0.52
3:C:120:TYR:CD2	3:C:121:LEU:HD11	2.44	0.52
3:C:236:VAL:HG22	3:C:275:VAL:HG11	1.91	0.52
1:A:465:PHE:HB2	2:B:239:LEU:HB3	1.90	0.52
3:C:120:TYR:C	3:C:121:LEU:HD12	2.30	0.52
3:C:73:LEU:HD21	3:C:85:LEU:HB2	1.91	0.51
3:C:42:PRO:HG2	3:C:45:SER:HB3	1.93	0.50
3:C:120:TYR:CD2	3:C:121:LEU:CD1	2.94	0.50
1:A:292:ASP:O	1:A:296:LYS:HG3	2.10	0.50
1:A:102:GLU:OE2	5:A:602:STU:N4	2.44	0.50
2:B:161:GLU:HB2	2:B:164:ASP:HB2	1.94	0.50
1:A:249:HIS:CG	1:A:259:ALA:HB2	2.47	0.49
3:C:200:TYR:CE1	3:C:280:LEU:HD21	2.47	0.49
1:A:59:VAL:HG23	1:A:63:ILE:HG12	1.93	0.49
3:C:83:GLY:HA2	3:C:128:LEU:HD13	1.93	0.49
1:A:173:ARG:O	1:A:173:ARG:HG2	2.12	0.48
1:A:415:VAL:O	1:A:419:ILE:HG13	2.13	0.48
3:C:55:GLN:NE2	3:C:109:GLU:O	2.43	0.48
2:B:224:ASP:HB3	2:B:227:LEU:HG	1.94	0.48
1:A:289:MET:CG	1:A:343:TYR:HB3	2.42	0.48
3:C:121:LEU:HD12	3:C:121:LEU:N	2.29	0.48
1:A:179:PRO:HB3	1:A:225:PHE:HE1	1.79	0.48
1:A:29:PHE:CE1	1:A:57:LEU:HD11	2.49	0.47
5:A:602:STU:H16	5:A:602:STU:H261	1.97	0.47
1:A:275:PRO:HD2	1:A:278:LEU:HD12	1.97	0.47
1:A:296:LYS:HE2	3:C:35:HIS:CE1	2.50	0.47
2:B:78:ARG:HB3	2:B:160:PHE:CZ	2.50	0.46
1:A:67:ILE:HG23	1:A:84:VAL:HG21	1.98	0.46
3:C:203:ILE:HG22	3:C:205:MET:HG3	1.97	0.46
1:A:59:VAL:O	1:A:62:LYS:N	2.49	0.46
1:A:465:PHE:HE2	1:A:544:LEU:HD23	1.81	0.45
3:C:298:ARG:NH1	6:C:1102:AMP:O2P	2.50	0.45
1:A:368:PHE:HD1	3:C:64:VAL:HG13	1.81	0.45
3:C:233:LYS:HD2	3:C:235:ARG:CZ	2.46	0.45
3:C:121:LEU:HB3	3:C:124:SER:O	2.17	0.45
1:A:320:ASP:CG	1:A:321:PRO:HD2	2.37	0.45
1:A:368:PHE:CD2	3:C:67:GLY:HA2	2.52	0.44
2:B:246:ASP:HB3	3:C:58:LYS:HZ1	1.83	0.44
3:C:288:ILE:HG12	3:C:317:ILE:HD13	1.99	0.44
1:A:527:THR:HB	1:A:528:PRO:HD2	1.98	0.44
1:A:398:TRP:HB2	2:B:213:VAL:HG11	1.98	0.44

Continued on next page...

Continued from previous page...

Atom-1	Atom-2	Interatomic distance (Å)	Clash overlap (Å)
1:A:345:ALA:HB1	2:B:219:THR:CG2	2.46	0.44
3:C:226:ALA:HA	3:C:241:SER:HA	2.01	0.43
2:B:158:THR:HG23	2:B:164:ASP:HB3	2.00	0.43
3:C:91:ILE:HG23	3:C:216:LEU:HD22	1.99	0.43
1:A:346:THR:O	2:B:219:THR:HG23	2.19	0.43
1:A:430:ASN:ND2	2:B:201:ARG:NH1	2.67	0.42
1:A:368:PHE:CE2	3:C:67:GLY:HA2	2.55	0.42
1:A:336:MET:HG2	1:A:338:GLU:CB	2.50	0.42
1:A:280:PRO:HG3	1:A:315:ASN:HB3	2.02	0.41
3:C:297:HIS:O	3:C:314:LEU:HG	2.20	0.41
1:A:139:HIS:CE1	1:A:141:ASP:HB3	2.55	0.41
1:A:76:PRO:HD3	1:A:316:ARG:HB3	2.02	0.41
1:A:313:LEU:HD12	1:A:314:TYR:N	2.35	0.41
3:C:303:ASP:CG	3:C:304:GLU:H	2.24	0.41
3:C:229:VAL:HB	3:C:238:ASP:HB3	2.03	0.40
3:C:318:LEU:O	3:C:322:VAL:HG23	2.21	0.40
2:B:239:LEU:HD11	2:B:251:LEU:HB3	2.03	0.40
1:A:204:VAL:HG13	1:A:215:PRO:HD2	2.02	0.40
1:A:443:THR:HB	1:A:530:PRO:HG2	2.03	0.40
1:A:260:THR:O	1:A:264:ILE:HG13	2.21	0.40

There are no symmetry-related clashes.

5.3 Torsion angles [i](#)

5.3.1 Protein backbone [i](#)

In the following table, the Percentiles column shows the percent Ramachandran outliers of the chain as a percentile score with respect to all X-ray entries followed by that with respect to entries of similar resolution.

The Analysed column shows the number of residues for which the backbone conformation was analysed, and the total number of residues.

Mol	Chain	Analysed	Favoured	Allowed	Outliers	Percentiles	
1	A	427/494 (86%)	418 (98%)	9 (2%)	0	100	100
2	B	164/204 (80%)	161 (98%)	3 (2%)	0	100	100
3	C	297/331 (90%)	293 (99%)	4 (1%)	0	100	100
All	All	888/1029 (86%)	872 (98%)	16 (2%)	0	100	100

There are no Ramachandran outliers to report.

5.3.2 Protein sidechains [i](#)

In the following table, the Percentiles column shows the percent sidechain outliers of the chain as a percentile score with respect to all X-ray entries followed by that with respect to entries of similar resolution.

The Analysed column shows the number of residues for which the sidechain conformation was analysed, and the total number of residues.

Mol	Chain	Analysed	Rotameric	Outliers	Percentiles	
1	A	393/448 (88%)	392 (100%)	1 (0%)	92	96
2	B	151/185 (82%)	151 (100%)	0	100	100
3	C	275/304 (90%)	274 (100%)	1 (0%)	91	95
All	All	819/937 (87%)	817 (100%)	2 (0%)	93	97

All (2) residues with a non-rotameric sidechain are listed below:

Mol	Chain	Res	Type
1	A	57	LEU
3	C	298	ARG

Sometimes sidechains can be flipped to improve hydrogen bonding and reduce clashes. There are no such sidechains identified.

5.3.3 RNA [i](#)

There are no RNA molecules in this entry.

5.4 Non-standard residues in protein, DNA, RNA chains [i](#)

There are no non-standard protein/DNA/RNA residues in this entry.

5.5 Carbohydrates [i](#)

There are no monosaccharides in this entry.

5.6 Ligand geometry [i](#)

5 ligands are modelled in this entry.

In the following table, the Counts columns list the number of bonds (or angles) for which Mogul statistics could be retrieved, the number of bonds (or angles) that are observed in the model and the number of bonds (or angles) that are defined in the Chemical Component Dictionary. The Link column lists molecule types, if any, to which the group is linked. The Z score for a bond length (or angle) is the number of standard deviations the observed value is removed from the expected value. A bond length (or angle) with $|Z| > 2$ is considered an outlier worth inspection. RMSZ is the root-mean-square of all Z scores of the bond lengths (or angles).

Mol	Type	Chain	Res	Link	Bond lengths			Bond angles		
					Counts	RMSZ	# Z > 2	Counts	RMSZ	# Z > 2
6	AMP	C	1102	-	22,25,25	0.89	1 (4%)	25,38,38	1.23	2 (8%)
6	AMP	C	1103	-	22,25,25	0.89	1 (4%)	25,38,38	1.21	2 (8%)
6	AMP	C	1101	-	22,25,25	0.88	1 (4%)	25,38,38	1.20	2 (8%)
5	STU	A	602	-	30,42,42	3.15	6 (20%)	31,68,68	1.52	6 (19%)
4	R34	A	601	-	35,36,36	1.74	4 (11%)	39,53,53	1.14	2 (5%)

In the following table, the Chirals column lists the number of chiral outliers, the number of chiral centers analysed, the number of these observed in the model and the number defined in the Chemical Component Dictionary. Similar counts are reported in the Torsion and Rings columns. '-' means no outliers of that kind were identified.

Mol	Type	Chain	Res	Link	Chirals	Torsions	Rings
6	AMP	C	1102	-	-	4/6/26/26	0/3/3/3
6	AMP	C	1103	-	-	0/6/26/26	0/3/3/3
6	AMP	C	1101	-	-	3/6/26/26	0/3/3/3
5	STU	A	602	-	-	1/4/42/42	-
4	R34	A	601	-	-	3/12/14/14	0/5/5/5

All (13) bond length outliers are listed below:

Mol	Chain	Res	Type	Atoms	Z	Observed(Å)	Ideal(Å)
5	A	602	STU	C8-N1	12.22	1.45	1.35
5	A	602	STU	O5-C8	8.83	1.41	1.23
4	A	601	R34	C18-N8	7.88	1.43	1.32
5	A	602	STU	C9-C10	4.02	1.53	1.50
5	A	602	STU	C22-C23	-3.81	1.49	1.52
4	A	601	R34	C7-C2	2.96	1.54	1.49
4	A	601	R34	C9-N7	-2.96	1.32	1.37
5	A	602	STU	C24-C25	2.50	1.56	1.51
6	C	1102	AMP	C5-C4	2.49	1.47	1.40
6	C	1103	AMP	C5-C4	2.48	1.47	1.40
5	A	602	STU	C26-C21	2.47	1.54	1.51
6	C	1101	AMP	C5-C4	2.46	1.47	1.40

Continued on next page...

Continued from previous page...

Mol	Chain	Res	Type	Atoms	Z	Observed(Å)	Ideal(Å)
4	A	601	R34	C11-C10	2.36	1.40	1.36

All (14) bond angle outliers are listed below:

Mol	Chain	Res	Type	Atoms	Z	Observed(°)	Ideal(°)
5	A	602	STU	C9-N1-C8	-5.40	108.66	113.85
4	A	601	R34	O21-N8-C18	-4.11	109.48	119.64
6	C	1103	AMP	N3-C2-N1	-3.28	123.55	128.68
6	C	1102	AMP	N3-C2-N1	-3.19	123.70	128.68
6	C	1101	AMP	N3-C2-N1	-3.12	123.80	128.68
4	A	601	R34	C11-C10-C7	-2.82	119.92	121.92
5	A	602	STU	O5-C8-C7	-2.75	126.06	129.32
6	C	1102	AMP	C4-C5-N7	-2.68	106.60	109.40
6	C	1103	AMP	C4-C5-N7	-2.59	106.70	109.40
6	C	1101	AMP	C4-C5-N7	-2.50	106.79	109.40
5	A	602	STU	C26-C21-C22	-2.48	107.80	112.64
5	A	602	STU	C6-C7-C8	2.20	133.05	129.76
5	A	602	STU	C1-C20-N3	-2.19	129.63	132.25
5	A	602	STU	C7-C8-N1	2.12	108.52	106.37

There are no chirality outliers.

All (11) torsion outliers are listed below:

Mol	Chain	Res	Type	Atoms
4	A	601	R34	C30-C18-N8-O21
4	A	601	R34	O20-C18-N8-O21
6	C	1101	AMP	C5'-O5'-P-O2P
6	C	1101	AMP	C5'-O5'-P-O3P
6	C	1102	AMP	C5'-O5'-P-O1P
6	C	1102	AMP	C5'-O5'-P-O2P
6	C	1102	AMP	C5'-O5'-P-O3P
6	C	1101	AMP	C5'-O5'-P-O1P
5	A	602	STU	C24-C23-N4-C28
4	A	601	R34	O20-C18-C30-C31
6	C	1102	AMP	O4'-C4'-C5'-O5'

There are no ring outliers.

2 monomers are involved in 4 short contacts:

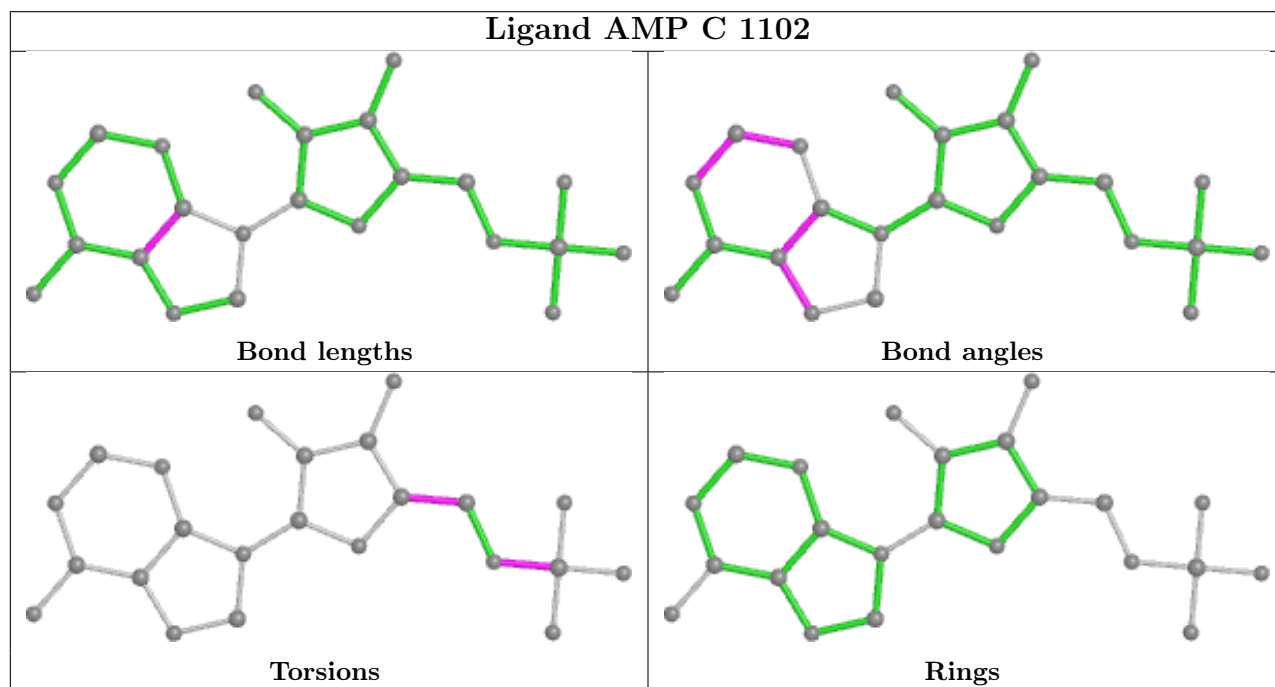
Mol	Chain	Res	Type	Clashes	Symm-Clashes
6	C	1102	AMP	2	0

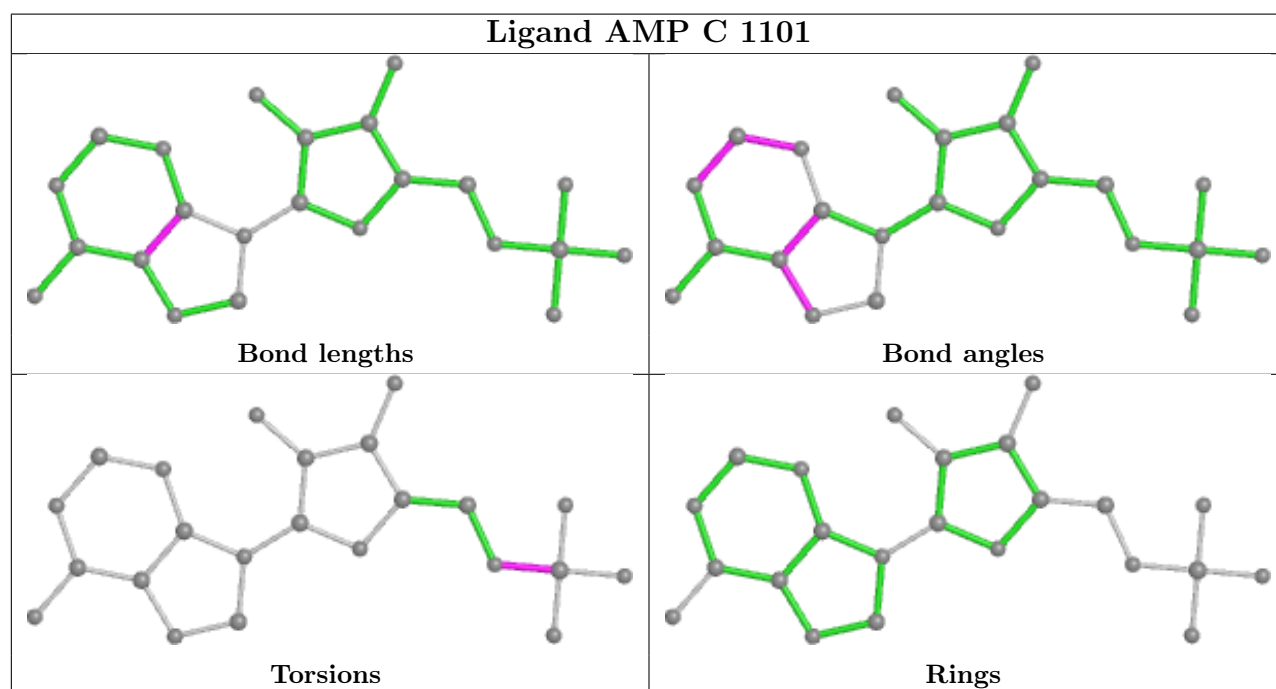
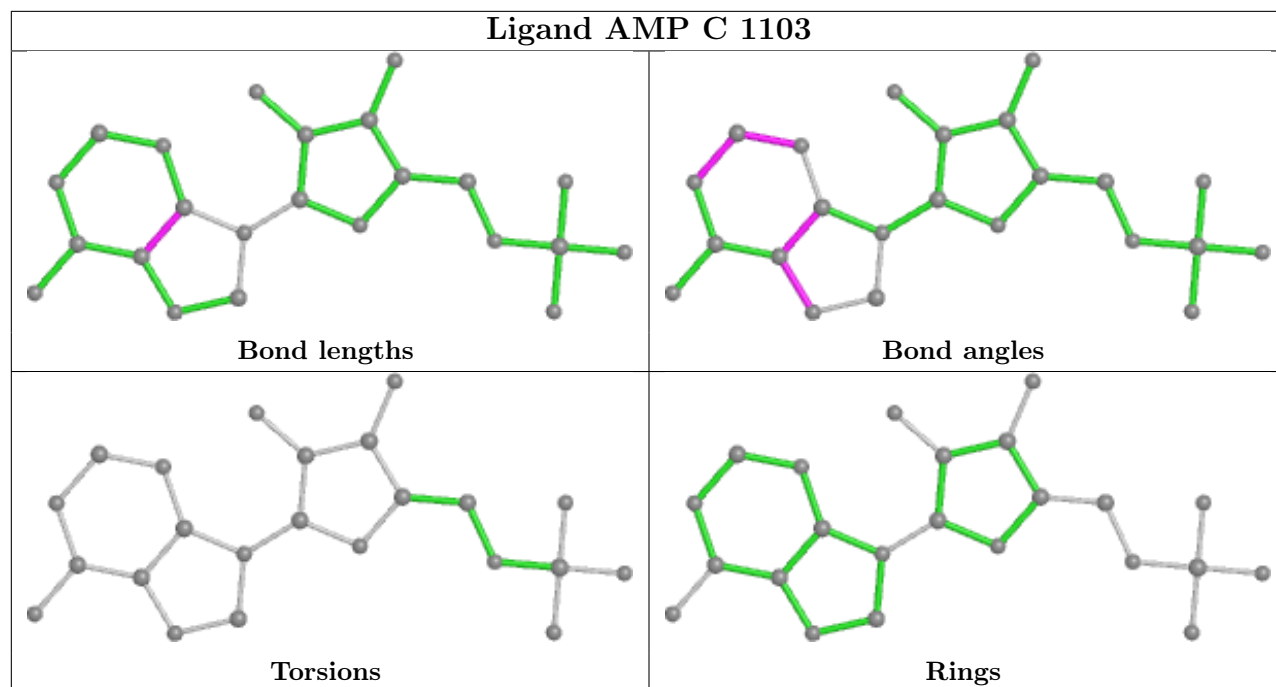
Continued on next page...

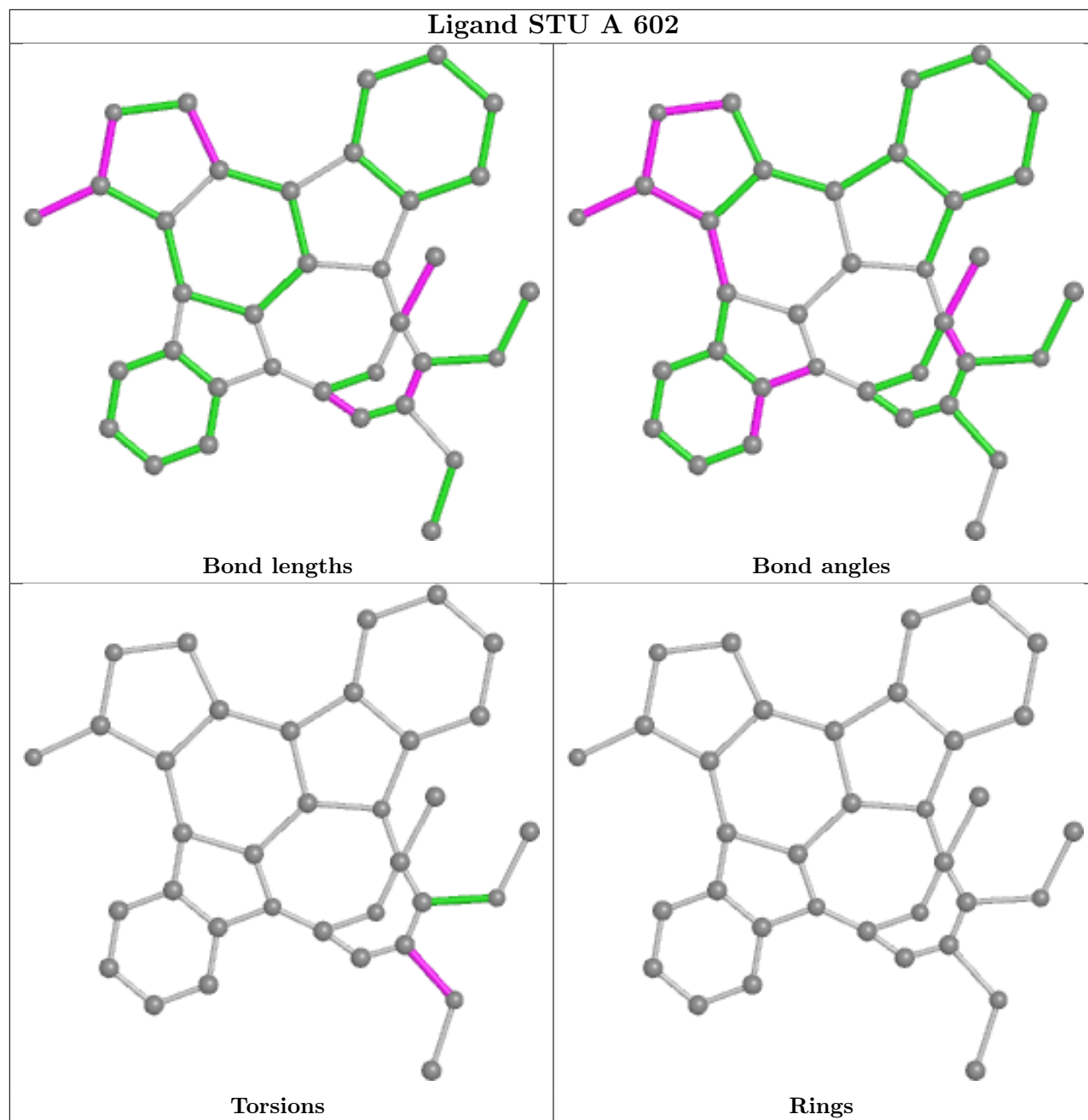
Continued from previous page...

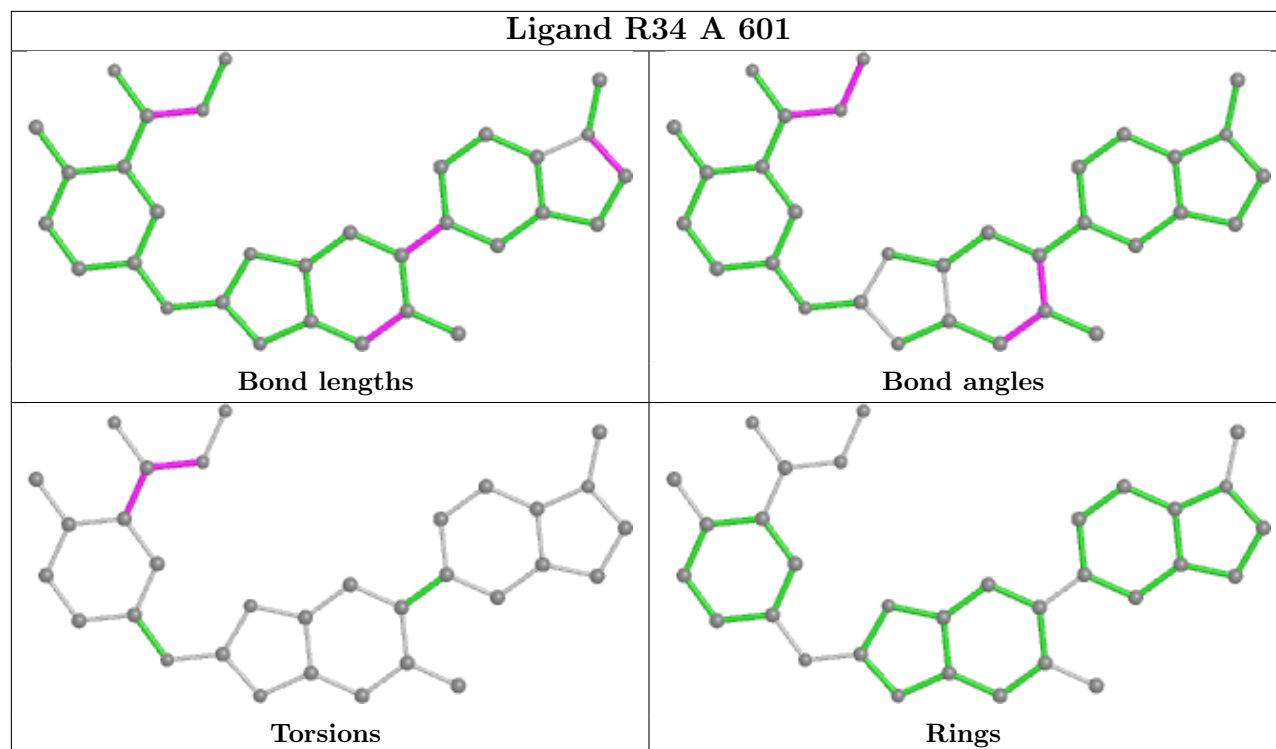
Mol	Chain	Res	Type	Clashes	Symm-Clashes
5	A	602	STU	2	0

The following is a two-dimensional graphical depiction of Mogul quality analysis of bond lengths, bond angles, torsion angles, and ring geometry for all instances of the Ligand of Interest. In addition, ligands with molecular weight > 250 and outliers as shown on the validation Tables will also be included. For torsion angles, if less than 5% of the Mogul distribution of torsion angles is within 10 degrees of the torsion angle in question, then that torsion angle is considered an outlier. Any bond that is central to one or more torsion angles identified as an outlier by Mogul will be highlighted in the graph. For rings, the root-mean-square deviation (RMSD) between the ring in question and similar rings identified by Mogul is calculated over all ring torsion angles. If the average RMSD is greater than 60 degrees and the minimal RMSD between the ring in question and any Mogul-identified rings is also greater than 60 degrees, then that ring is considered an outlier. The outliers are highlighted in purple. The color gray indicates Mogul did not find sufficient equivalents in the CSD to analyse the geometry.









5.7 Other polymers [i](#)

There are no such residues in this entry.

5.8 Polymer linkage issues [i](#)

There are no chain breaks in this entry.

6 Fit of model and data

6.1 Protein, DNA and RNA chains

In the following table, the column labelled ‘#RSRZ > 2’ contains the number (and percentage) of RSRZ outliers, followed by percent RSRZ outliers for the chain as percentile scores relative to all X-ray entries and entries of similar resolution. The OWAB column contains the minimum, median, 95th percentile and maximum values of the occupancy-weighted average B-factor per residue. The column labelled ‘Q < 0.9’ lists the number of (and percentage) of residues with an average occupancy less than 0.9.

Mol	Chain	Analysed	<RSRZ>	#RSRZ>2	OWAB(Å ²)	Q<0.9
1	A	435/494 (88%)	0.54	59 (13%) 3 2	26, 59, 212, 385	0
2	B	168/204 (82%)	0.15	12 (7%) 16 12	28, 59, 126, 155	0
3	C	299/331 (90%)	0.04	14 (4%) 31 28	39, 72, 119, 145	0
All	All	902/1029 (87%)	0.30	85 (9%) 8 6	26, 65, 141, 385	0

All (85) RSRZ outliers are listed below:

Mol	Chain	Res	Type	RSRZ
1	A	287	SER	13.9
1	A	334	ARG	8.4
1	A	313	LEU	7.8
1	A	337	ASN	7.8
1	A	336	MET	6.9
1	A	338	GLU	6.7
1	A	320	ASP	6.1
1	A	321	PRO	5.9
1	A	283	PRO	5.3
1	A	331	ASP	5.3
1	A	340	LYS	5.3
2	B	76	GLN	5.0
2	B	165	ALA	4.9
3	C	202	ASN	4.8
3	C	28	TYR	4.6
1	A	471	GLU	4.5
1	A	335	ILE	4.4
1	A	415	VAL	4.4
3	C	186	GLU	4.4
2	B	171	GLN	4.3
3	C	271	TYR	4.2
1	A	288	THR	4.2
1	A	410	ASP	3.9

Continued on next page...

Continued from previous page...

Mol	Chain	Res	Type	RSRZ
1	A	426	TRP	3.9
2	B	167	MET	3.8
1	A	434	LEU	3.8
2	B	169	ASP	3.7
1	A	314	TYR	3.7
1	A	436	VAL	3.7
1	A	289	MET	3.7
1	A	422	LEU	3.6
1	A	428	VAL	3.6
3	C	324	THR	3.5
3	C	123	ASP	3.5
1	A	318	HIS	3.4
3	C	125	PHE	3.4
2	B	166	LEU	3.3
1	A	284	SER	3.2
1	A	348	PRO	3.2
1	A	286	SER	3.2
1	A	451	LEU	3.2
1	A	411	ILE	3.1
1	A	432	TYR	3.1
1	A	315	ASN	3.1
1	A	173	ARG	3.0
2	B	168	VAL	2.9
1	A	395	LYS	2.9
1	A	330	ILE	2.9
2	B	170	SER	2.9
3	C	187	PHE	2.9
1	A	368	PHE	2.9
3	C	270	HIS	2.8
1	A	419	ILE	2.7
1	A	298	VAL	2.7
1	A	317	ASN	2.7
1	A	424	TYR	2.6
1	A	291	ASP	2.5
2	B	163	PHE	2.5
1	A	329	ILE	2.5
3	C	306	ASP	2.5
1	A	359	THR	2.5
1	A	418	ALA	2.5
1	A	421	GLN	2.4
1	A	282	ASP	2.4
1	A	332	ASN	2.4

Continued on next page...

Continued from previous page...

Mol	Chain	Res	Type	RSRZ
2	B	164	ASP	2.4
1	A	459	ARG	2.4
1	A	293	GLU	2.4
1	A	296	LYS	2.4
1	A	323	ALA	2.4
1	A	427	LYS	2.3
1	A	29	PHE	2.3
1	A	545	ILE	2.3
1	A	408	PRO	2.2
1	A	548	LEU	2.2
3	C	188	MET	2.2
3	C	126	LYS	2.1
1	A	360	ARG	2.1
1	A	319	GLN	2.1
1	A	11	GLY	2.1
2	B	206	LEU	2.1
3	C	194	GLU	2.1
2	B	74	PRO	2.1
1	A	322	LEU	2.0
3	C	27	VAL	2.0

6.2 Non-standard residues in protein, DNA, RNA chains [i](#)

There are no non-standard protein/DNA/RNA residues in this entry.

6.3 Carbohydrates [i](#)

There are no monosaccharides in this entry.

6.4 Ligands [i](#)

In the following table, the Atoms column lists the number of modelled atoms in the group and the number defined in the chemical component dictionary. The B-factors column lists the minimum, median, 95th percentile and maximum values of B factors of atoms in the group. The column labelled 'Q< 0.9' lists the number of atoms with occupancy less than 0.9.

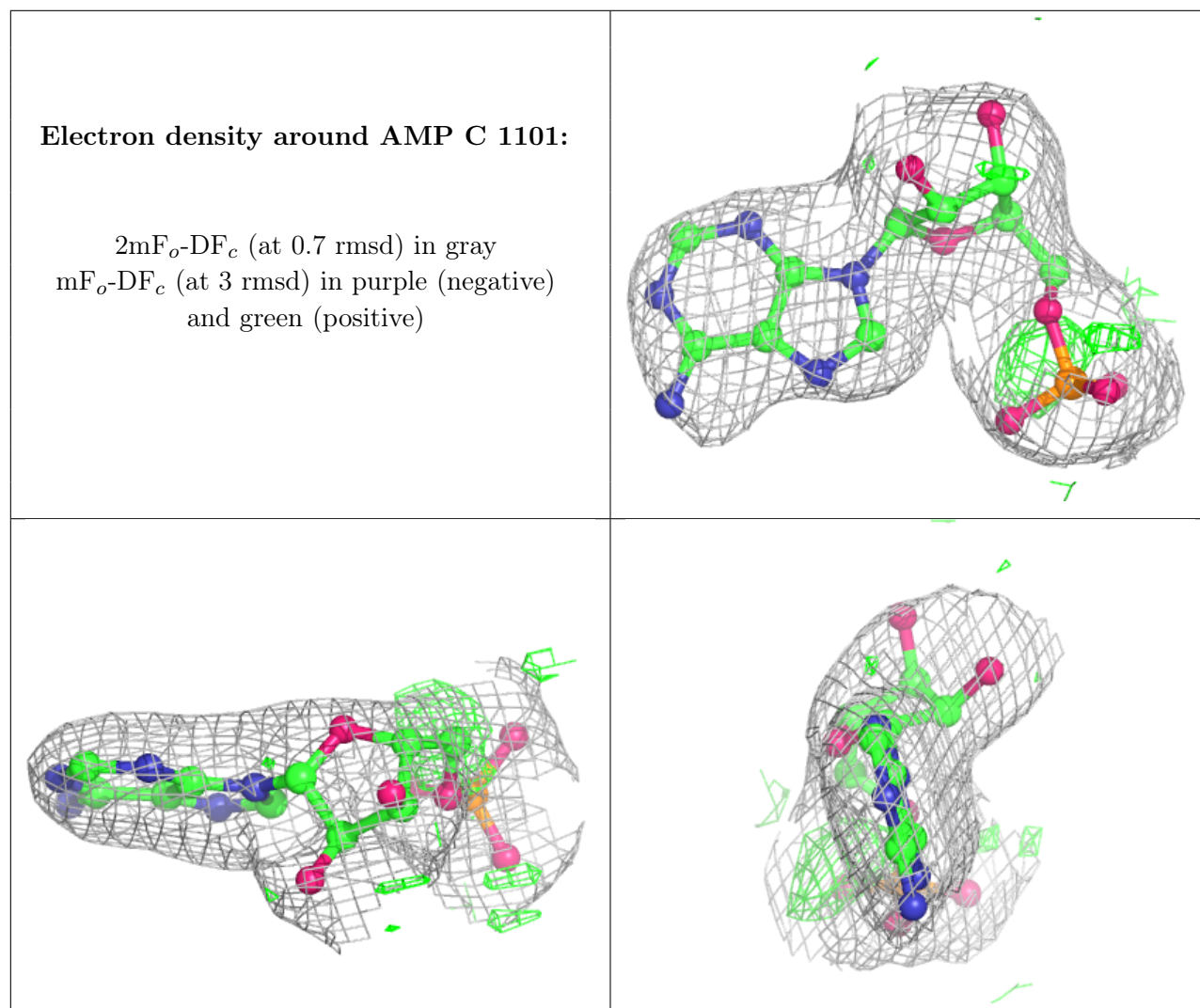
Mol	Type	Chain	Res	Atoms	RSCC	RSR	B-factors(\AA^2)	Q<0.9
6	AMP	C	1101	23/23	0.93	0.19	61,74,88,92	0
4	R34	A	601	32/32	0.95	0.19	21,34,96,120	0
6	AMP	C	1102	23/23	0.95	0.17	44,57,76,77	0

Continued on next page...

Continued from previous page...

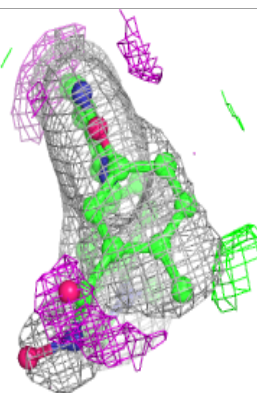
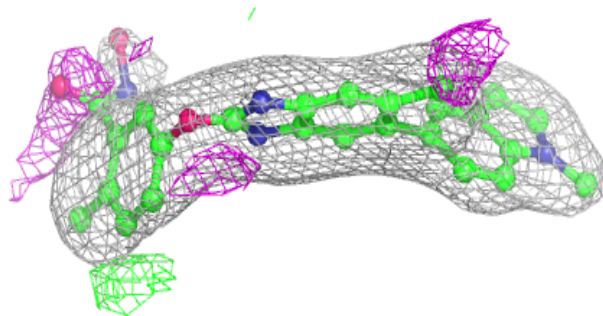
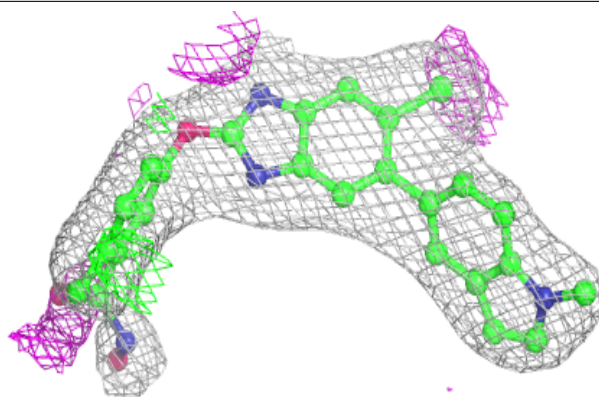
Mol	Type	Chain	Res	Atoms	RSCC	RSR	B-factors(\AA^2)	Q<0.9
6	AMP	C	1103	23/23	0.95	0.15	55,64,72,75	0
5	STU	A	602	35/35	0.98	0.16	12,24,36,41	0

The following is a graphical depiction of the model fit to experimental electron density of all instances of the Ligand of Interest. In addition, ligands with molecular weight > 250 and outliers as shown on the geometry validation Tables will also be included. Each fit is shown from different orientation to approximate a three-dimensional view.

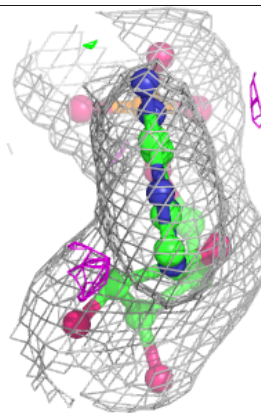
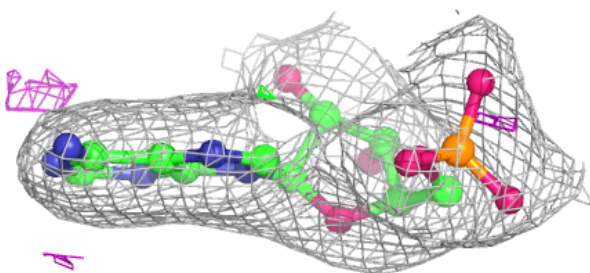
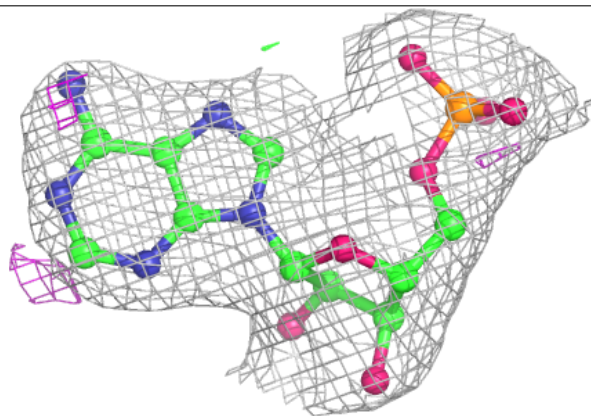


Electron density around R34 A 601:

$2mF_o-DF_c$ (at 0.7 rmsd) in gray
 mF_o-DF_c (at 3 rmsd) in purple (negative)
and green (positive)

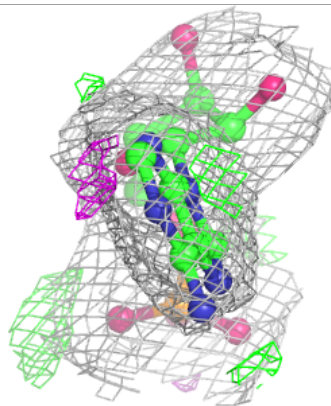
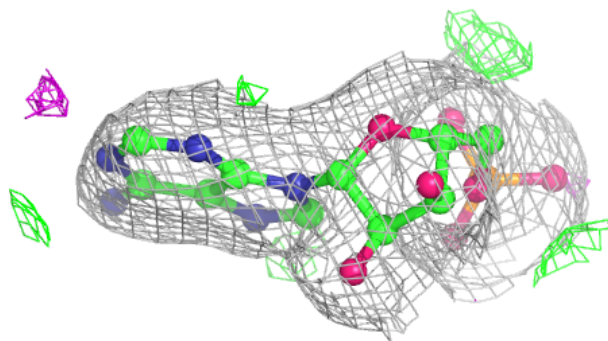
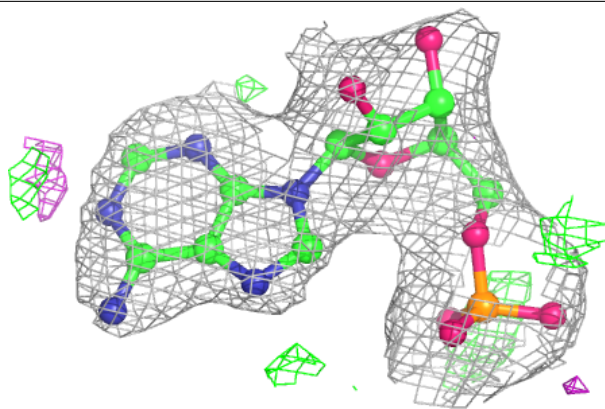
**Electron density around AMP C 1102:**

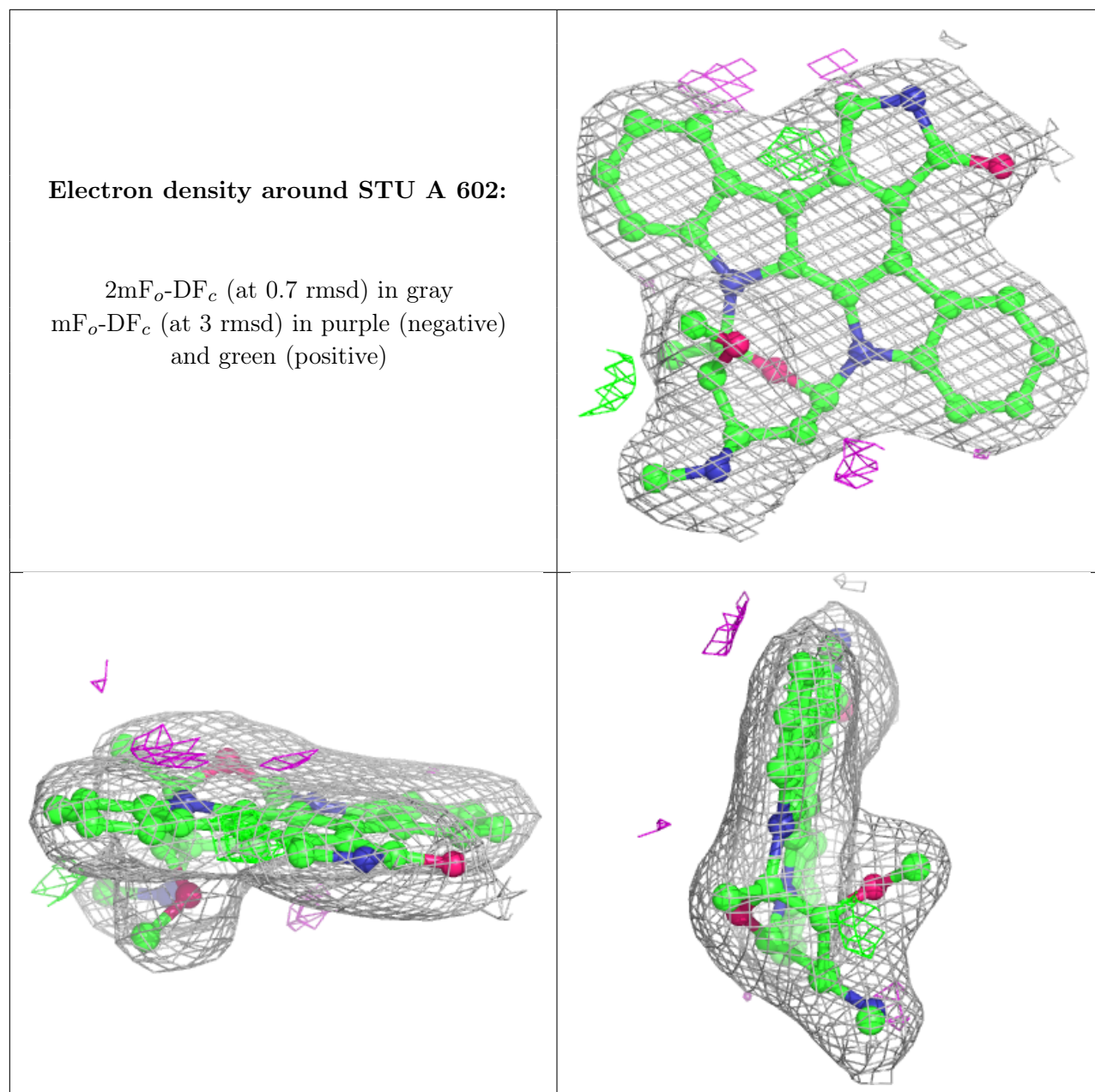
$2mF_o-DF_c$ (at 0.7 rmsd) in gray
 mF_o-DF_c (at 3 rmsd) in purple (negative)
and green (positive)



Electron density around AMP C 1103:

$2mF_o-DF_c$ (at 0.7 rmsd) in gray
 mF_o-DF_c (at 3 rmsd) in purple (negative)
and green (positive)





6.5 Other polymers [i](#)

There are no such residues in this entry.