



# Full wwPDB X-ray Structure Validation Report ⓘ

Dec 8, 2023 – 05:10 am GMT

PDB ID : 2C1I  
Title : Structure of Streptococcus pneumoniae peptidoglycan deacetylase (SpPgdA)  
D 275 N Mutant.  
Authors : Blair, D.E.; Schuttelkopf, A.W.; MacRae, J.I.; van Aalten, D.M.F.  
Deposited on : 2005-09-15  
Resolution : 1.35 Å(reported)

This is a Full wwPDB X-ray Structure Validation Report for a publicly released PDB entry.

We welcome your comments at [validation@mail.wwpdb.org](mailto:validation@mail.wwpdb.org)

A user guide is available at

<https://www.wwpdb.org/validation/2017/XrayValidationReportHelp>

with specific help available everywhere you see the ⓘ symbol.

The types of validation reports are described at

<http://www.wwpdb.org/validation/2017/FAQs#types>.

---

The following versions of software and data (see [references ⓘ](#)) were used in the production of this report:

MolProbity : 4.02b-467  
Mogul : 1.8.4, CSD as541be (2020)  
Xtriage (Phenix) : 1.13  
EDS : 2.36  
Percentile statistics : 20191225.v01 (using entries in the PDB archive December 25th 2019)  
Refmac : 5.8.0158  
CCP4 : 7.0.044 (Gargrove)  
Ideal geometry (proteins) : Engh & Huber (2001)  
Ideal geometry (DNA, RNA) : Parkinson et al. (1996)  
Validation Pipeline (wwPDB-VP) : 2.36

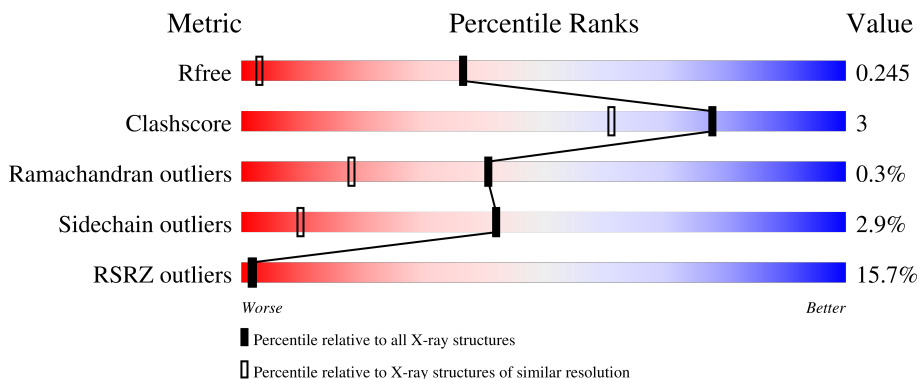
# 1 Overall quality at a glance

The following experimental techniques were used to determine the structure:

*X-RAY DIFFRACTION*

The reported resolution of this entry is 1.35 Å.

Percentile scores (ranging between 0-100) for global validation metrics of the entry are shown in the following graphic. The table shows the number of entries on which the scores are based.



Metric	Whole archive (#Entries)	Similar resolution (#Entries, resolution range(Å))
$R_{free}$	130704	1509 (1.38-1.34)
Clashscore	141614	1551 (1.38-1.34)
Ramachandran outliers	138981	1530 (1.38-1.34)
Sidechain outliers	138945	1530 (1.38-1.34)
RSRZ outliers	127900	1487 (1.38-1.34)

The table below summarises the geometric issues observed across the polymeric chains and their fit to the electron density. The red, orange, yellow and green segments of the lower bar indicate the fraction of residues that contain outliers for  $\geq 3$ , 2, 1 and 0 types of geometric quality criteria respectively. A grey segment represents the fraction of residues that are not modelled. The numeric value for each fraction is indicated below the corresponding segment, with a dot representing fractions  $\leq 5\%$ . The upper red bar (where present) indicates the fraction of residues that have poor fit to the electron density. The numeric value is given above the bar.

Mol	Chain	Length	Quality of chain
1	A	431	

## 2 Entry composition [i](#)

There are 5 unique types of molecules in this entry. The entry contains 3315 atoms, of which 0 are hydrogens and 0 are deuteriums.

In the tables below, the ZeroOcc column contains the number of atoms modelled with zero occupancy, the AltConf column contains the number of residues with at least one atom in alternate conformation and the Trace column contains the number of residues modelled with at most 2 atoms.

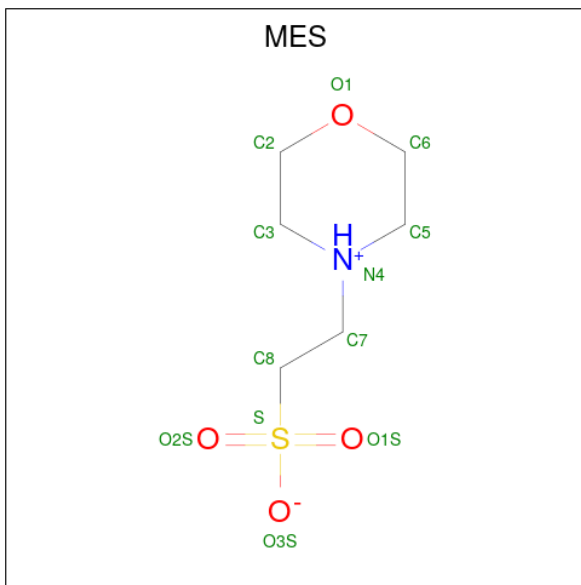
- Molecule 1 is a protein called PEPTIDOGLYCAN GLCNAC DEACETYLASE.

Mol	Chain	Residues	Atoms					ZeroOcc	AltConf	Trace
			Total	C	N	O	S			
1	A	383	3085	1961	507	613	4	0	0	0

There is a discrepancy between the modelled and reference sequences:

Chain	Residue	Modelled	Actual	Comment	Reference
A	275	ASN	ASP	engineered mutation	UNP Q8DP63

- Molecule 2 is 2-(N-MORPHOLINO)-ETHANESULFONIC ACID (three-letter code: MES) (formula: C<sub>6</sub>H<sub>13</sub>NO<sub>4</sub>S).



Mol	Chain	Residues	Atoms					ZeroOcc	AltConf
			Total	C	N	O	S		
2	A	1	12	6	1	4	1	0	0

- Molecule 3 is ZINC ION (three-letter code: ZN) (formula: Zn).

Mol	Chain	Residues	Atoms		ZeroOcc	AltConf
3	A	2	Total	Zn	0	0
			2	2		

- Molecule 4 is SULFATE ION (three-letter code: SO4) (formula: O<sub>4</sub>S).



Mol	Chain	Residues	Atoms			ZeroOcc	AltConf
4	A	1	Total	O	S	0	0
			5	4	1		

- Molecule 5 is water.

Mol	Chain	Residues	Atoms		ZeroOcc	AltConf
5	A	211	Total	O	0	0
			211	211		



## 4 Data and refinement statistics

Property	Value	Source
Space group	P 21 21 21	Depositor
Cell constants a, b, c, $\alpha$ , $\beta$ , $\gamma$	56.27Å 79.24Å 100.38Å 90.00° 90.00° 90.00°	Depositor
Resolution (Å)	15.00 – 1.35 14.99 – 1.35	Depositor EDS
% Data completeness (in resolution range)	94.2 (15.00-1.35) 94.2 (14.99-1.35)	Depositor EDS
$R_{merge}$	0.07	Depositor
$R_{sym}$	(Not available)	Depositor
$\langle I/\sigma(I) \rangle$ <sup>1</sup>	2.95 (at 1.35Å)	Xtrriage
Refinement program	REFMAC 5.2.0005	Depositor
R, $R_{free}$	0.188 , 0.225 0.209 , 0.245	Depositor DCC
$R_{free}$ test set	1840 reflections (1.97%)	wwPDB-VP
Wilson B-factor (Å <sup>2</sup> )	16.2	Xtrriage
Anisotropy	0.152	Xtrriage
Bulk solvent $k_{sol}$ (e/Å <sup>3</sup> ), $B_{sol}$ (Å <sup>2</sup> )	0.43 , 50.2	EDS
L-test for twinning <sup>2</sup>	$\langle  L  \rangle = 0.50$ , $\langle L^2 \rangle = 0.34$	Xtrriage
Estimated twinning fraction	No twinning to report.	Xtrriage
$F_o, F_c$ correlation	0.95	EDS
Total number of atoms	3315	wwPDB-VP
Average B, all atoms (Å <sup>2</sup> )	20.0	wwPDB-VP

Xtrriage's analysis on translational NCS is as follows: *The largest off-origin peak in the Patterson function is 5.26% of the height of the origin peak. No significant pseudotranslation is detected.*

<sup>1</sup>Intensities estimated from amplitudes.

<sup>2</sup>Theoretical values of  $\langle |L| \rangle$ ,  $\langle L^2 \rangle$  for acentric reflections are 0.5, 0.333 respectively for untwinned datasets, and 0.375, 0.2 for perfectly twinned datasets.

## 5 Model quality [i](#)

### 5.1 Standard geometry [i](#)

Bond lengths and bond angles in the following residue types are not validated in this section: SO4, MES, ZN

The Z score for a bond length (or angle) is the number of standard deviations the observed value is removed from the expected value. A bond length (or angle) with  $|Z| > 5$  is considered an outlier worth inspection. RMSZ is the root-mean-square of all Z scores of the bond lengths (or angles).

Mol	Chain	Bond lengths		Bond angles	
		RMSZ	# Z  >5	RMSZ	# Z  >5
1	A	0.73	0/3142	0.77	0/4245

There are no bond length outliers.

There are no bond angle outliers.

There are no chirality outliers.

There are no planarity outliers.

### 5.2 Too-close contacts [i](#)

In the following table, the Non-H and H(model) columns list the number of non-hydrogen atoms and hydrogen atoms in the chain respectively. The H(added) column lists the number of hydrogen atoms added and optimized by MolProbity. The Clashes column lists the number of clashes within the asymmetric unit, whereas Symm-Clashes lists symmetry-related clashes.

Mol	Chain	Non-H	H(model)	H(added)	Clashes	Symm-Clashes
1	A	3085	0	3046	18	0
2	A	12	0	13	0	0
3	A	2	0	0	0	0
4	A	5	0	0	0	0
5	A	211	0	0	1	0
All	All	3315	0	3059	18	0

The all-atom clashscore is defined as the number of clashes found per 1000 atoms (including hydrogen atoms). The all-atom clashscore for this structure is 3.

All (18) close contacts within the same asymmetric unit are listed below, sorted by their clash magnitude.

Atom-1	Atom-2	Interatomic distance (Å)	Clash overlap (Å)
1:A:417:HIS:HB3	1:A:419:ILE:HD11	1.52	0.91
1:A:276:ASP:HB2	1:A:419:ILE:HD12	1.69	0.73
1:A:417:HIS:HB3	1:A:419:ILE:CD1	2.20	0.70
1:A:69:HIS:HE1	1:A:76:GLU:OE2	1.79	0.66
1:A:182:LEU:HD13	1:A:222:LEU:HD22	1.77	0.65
1:A:178:LEU:O	1:A:182:LEU:HB2	1.97	0.64
1:A:222:LEU:HD13	1:A:236:LEU:HD13	1.84	0.60
1:A:165:ASP:HA	1:A:208:LEU:HD12	1.94	0.50
1:A:449:ASN:OD1	1:A:450:THR:HG22	2.12	0.49
1:A:127:ASN:ND2	1:A:154:HIS:ND1	2.61	0.48
1:A:93:ARG:HH11	1:A:93:ARG:HG2	1.78	0.48
1:A:272:LEU:HG	1:A:441:PHE:CE2	2.51	0.46
1:A:222:LEU:HD13	1:A:236:LEU:CD1	2.46	0.45
1:A:253:LYS:HA	1:A:253:LYS:HD2	1.77	0.45
1:A:69:HIS:CE1	1:A:76:GLU:OE2	2.66	0.42
1:A:135:TYR:CD1	1:A:144:GLU:HB3	2.54	0.42
1:A:243:ASP:OD1	1:A:261:TYR:OH	2.26	0.42
1:A:47:GLU:HG3	5:A:2001:HOH:O	2.21	0.40

There are no symmetry-related clashes.

## 5.3 Torsion angles [i](#)

### 5.3.1 Protein backbone [i](#)

In the following table, the Percentiles column shows the percent Ramachandran outliers of the chain as a percentile score with respect to all X-ray entries followed by that with respect to entries of similar resolution.

The Analysed column shows the number of residues for which the backbone conformation was analysed, and the total number of residues.

Mol	Chain	Analysed	Favoured	Allowed	Outliers	Percentiles
1	A	375/431 (87%)	365 (97%)	9 (2%)	1 (0%)	41 18

All (1) Ramachandran outliers are listed below:

Mol	Chain	Res	Type
1	A	449	ASN



### 5.3.2 Protein sidechains [i](#)

In the following table, the Percentiles column shows the percent sidechain outliers of the chain as a percentile score with respect to all X-ray entries followed by that with respect to entries of similar resolution.

The Analysed column shows the number of residues for which the sidechain conformation was analysed, and the total number of residues.

Mol	Chain	Analysed	Rotameric	Outliers	Percentiles
1	A	348/393 (88%)	338 (97%)	10 (3%)	42 10

All (10) residues with a non-rotameric sidechain are listed below:

Mol	Chain	Res	Type
1	A	48	GLN
1	A	49	LYS
1	A	147	LYS
1	A	208	LEU
1	A	214	ASP
1	A	245	ILE
1	A	253	LYS
1	A	259	GLN
1	A	363	MET
1	A	419	ILE

Sometimes sidechains can be flipped to improve hydrogen bonding and reduce clashes. All (3) such sidechains are listed below:

Mol	Chain	Res	Type
1	A	69	HIS
1	A	127	ASN
1	A	407	GLN

### 5.3.3 RNA [i](#)

There are no RNA molecules in this entry.

## 5.4 Non-standard residues in protein, DNA, RNA chains [i](#)

There are no non-standard protein/DNA/RNA residues in this entry.

## 5.5 Carbohydrates [i](#)

There are no monosaccharides in this entry.

## 5.6 Ligand geometry [i](#)

Of 4 ligands modelled in this entry, 2 are monoatomic - leaving 2 for Mogul analysis.

In the following table, the Counts columns list the number of bonds (or angles) for which Mogul statistics could be retrieved, the number of bonds (or angles) that are observed in the model and the number of bonds (or angles) that are defined in the Chemical Component Dictionary. The Link column lists molecule types, if any, to which the group is linked. The Z score for a bond length (or angle) is the number of standard deviations the observed value is removed from the expected value. A bond length (or angle) with  $|Z| > 2$  is considered an outlier worth inspection. RMSZ is the root-mean-square of all Z scores of the bond lengths (or angles).

Mol	Type	Chain	Res	Link	Bond lengths			Bond angles		
					Counts	RMSZ	# Z  > 2	Counts	RMSZ	# Z  > 2
4	SO4	A	1467	3	4,4,4	0.90	0	6,6,6	0.76	0
2	MES	A	1464	-	12,12,12	1.47	1 (8%)	14,16,16	1.72	3 (21%)

In the following table, the Chirals column lists the number of chiral outliers, the number of chiral centers analysed, the number of these observed in the model and the number defined in the Chemical Component Dictionary. Similar counts are reported in the Torsion and Rings columns. '-' means no outliers of that kind were identified.

Mol	Type	Chain	Res	Link	Chirals	Torsions	Rings
2	MES	A	1464	-	-	0/6/14/14	0/1/1/1

All (1) bond length outliers are listed below:

Mol	Chain	Res	Type	Atoms	Z	Observed(Å)	Ideal(Å)
2	A	1464	MES	C8-S	4.34	1.83	1.77

All (3) bond angle outliers are listed below:

Mol	Chain	Res	Type	Atoms	Z	Observed(°)	Ideal(°)
2	A	1464	MES	O2S-S-C8	3.52	111.15	106.92
2	A	1464	MES	O1S-S-C8	2.42	109.83	106.92
2	A	1464	MES	O1-C6-C5	-2.05	107.29	111.80

There are no chirality outliers.

There are no torsion outliers.

There are no ring outliers.

No monomer is involved in short contacts.

## 5.7 Other polymers

There are no such residues in this entry.

## 5.8 Polymer linkage issues

There are no chain breaks in this entry.

## 6 Fit of model and data

### 6.1 Protein, DNA and RNA chains

In the following table, the column labelled ‘#RSRZ> 2’ contains the number (and percentage) of RSRZ outliers, followed by percent RSRZ outliers for the chain as percentile scores relative to all X-ray entries and entries of similar resolution. The OWAB column contains the minimum, median, 95<sup>th</sup> percentile and maximum values of the occupancy-weighted average B-factor per residue. The column labelled ‘Q< 0.9’ lists the number of (and percentage) of residues with an average occupancy less than 0.9.

Mol	Chain	Analysed	<RSRZ>	#RSRZ>2	OWAB(Å <sup>2</sup> )	Q<0.9
1	A	383/431 (88%)	0.82	60 (15%) <b>2</b>   <b>2</b>	11, 18, 35, 49	0

All (60) RSRZ outliers are listed below:

Mol	Chain	Res	Type	RSRZ
1	A	183	THR	7.2
1	A	450	THR	7.1
1	A	148	THR	6.9
1	A	182	LEU	6.5
1	A	234	ILE	6.3
1	A	46	PHE	6.1
1	A	210	ALA	5.4
1	A	179	ILE	5.3
1	A	184	SER	5.3
1	A	207	ASP	5.0
1	A	185	PHE	5.0
1	A	212	ASN	4.7
1	A	106	SER	4.7
1	A	149	SER	4.7
1	A	142	ILE	4.4
1	A	157	GLU	4.4
1	A	180	LYS	4.2
1	A	107	LYS	4.1
1	A	211	TRP	4.0
1	A	240	ALA	3.9
1	A	236	LEU	3.7
1	A	102	ASP	3.5
1	A	103	LYS	3.5
1	A	173	LYS	3.5
1	A	105	GLU	3.4
1	A	223	TYR	3.4
1	A	243	ASP	3.4

*Continued on next page...*

*Continued from previous page...*

Mol	Chain	Res	Type	RSRZ
1	A	222	LEU	3.4
1	A	176	GLU	3.3
1	A	171	ALA	3.1
1	A	420	HIS	3.0
1	A	104	LEU	3.0
1	A	85	GLY	3.0
1	A	413	ILE	3.0
1	A	170	ASP	2.7
1	A	150	LEU	2.7
1	A	109	ASN	2.7
1	A	50	ILE	2.7
1	A	108	ASP	2.6
1	A	252	GLU	2.5
1	A	178	LEU	2.5
1	A	47	GLU	2.5
1	A	233	GLU	2.5
1	A	208	LEU	2.4
1	A	419	ILE	2.4
1	A	175	LYS	2.4
1	A	74	GLN	2.3
1	A	86	GLU	2.3
1	A	244	VAL	2.3
1	A	442	VAL	2.2
1	A	448	LEU	2.2
1	A	220	ILE	2.2
1	A	444	ILE	2.2
1	A	147	LYS	2.1
1	A	209	SER	2.1
1	A	181	GLU	2.1
1	A	237	PRO	2.1
1	A	78	ILE	2.1
1	A	172	SER	2.0
1	A	151	GLY	2.0

## 6.2 Non-standard residues in protein, DNA, RNA chains [i](#)

There are no non-standard protein/DNA/RNA residues in this entry.

## 6.3 Carbohydrates [i](#)

There are no monosaccharides in this entry.

## 6.4 Ligands [i](#)

In the following table, the Atoms column lists the number of modelled atoms in the group and the number defined in the chemical component dictionary. The B-factors column lists the minimum, median, 95<sup>th</sup> percentile and maximum values of B factors of atoms in the group. The column labelled 'Q< 0.9' lists the number of atoms with occupancy less than 0.9.

Mol	Type	Chain	Res	Atoms	RSCC	RSR	B-factors( $\text{\AA}^2$ )	Q<0.9
2	MES	A	1464	12/12	0.82	0.19	23,26,38,38	0
4	SO4	A	1467	5/5	0.99	0.07	14,15,16,17	0
3	ZN	A	1466	1/1	1.00	0.05	16,16,16,16	0
3	ZN	A	1465	1/1	1.00	0.05	14,14,14,14	0

## 6.5 Other polymers [i](#)

There are no such residues in this entry.