



# Full wwPDB X-ray Structure Validation Report ⓘ

May 13, 2020 – 05:21 am BST

PDB ID : 5BX6  
Title : PKA in complex with a halogenated phthalazinone fragment compound.  
Authors : Narayanan, D.; Alam, K.A.; Engh, R.A.  
Deposited on : 2015-06-08  
Resolution : 1.89 Å(reported)

This is a Full wwPDB X-ray Structure Validation Report for a publicly released PDB entry.

We welcome your comments at [validation@mail.wwpdb.org](mailto:validation@mail.wwpdb.org)

A user guide is available at

<https://www.wwpdb.org/validation/2017/XrayValidationReportHelp>

with specific help available everywhere you see the ⓘ symbol.

---

The following versions of software and data (see [references ⓘ](#)) were used in the production of this report:

MolProbity : 4.02b-467  
Mogul : 1.8.5 (274361), CSD as541be (2020)  
Xtriage (Phenix) : 1.13  
EDS : 2.11  
Percentile statistics : 20191225.v01 (using entries in the PDB archive December 25th 2019)  
Refmac : 5.8.0158  
CCP4 : 7.0.044 (Gargrove)  
Ideal geometry (proteins) : Engh & Huber (2001)  
Ideal geometry (DNA, RNA) : Parkinson et al. (1996)  
Validation Pipeline (wwPDB-VP) : 2.11

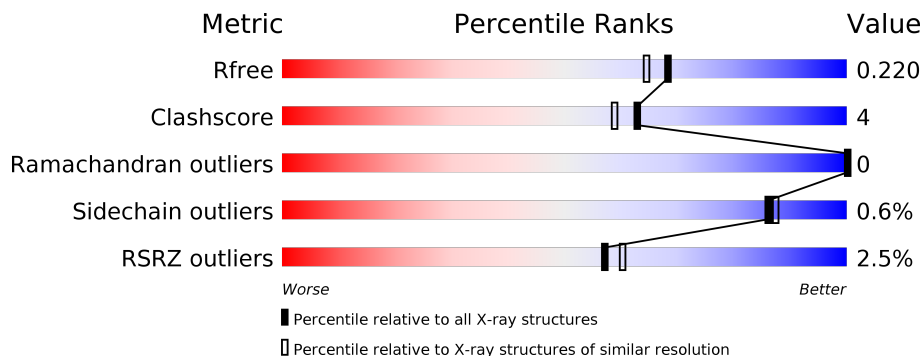
# 1 Overall quality at a glance

The following experimental techniques were used to determine the structure:

*X-RAY DIFFRACTION*

The reported resolution of this entry is 1.89 Å.

Percentile scores (ranging between 0-100) for global validation metrics of the entry are shown in the following graphic. The table shows the number of entries on which the scores are based.



Metric	Whole archive (#Entries)	Similar resolution (#Entries, resolution range(Å))
$R_{free}$	130704	6207 (1.90-1.90)
Clashscore	141614	6847 (1.90-1.90)
Ramachandran outliers	138981	6760 (1.90-1.90)
Sidechain outliers	138945	6760 (1.90-1.90)
RSRZ outliers	127900	6082 (1.90-1.90)

The table below summarises the geometric issues observed across the polymeric chains and their fit to the electron density. The red, orange, yellow and green segments on the lower bar indicate the fraction of residues that contain outliers for  $\geq 3$ , 2, 1 and 0 types of geometric quality criteria respectively. A grey segment represents the fraction of residues that are not modelled. The numeric value for each fraction is indicated below the corresponding segment, with a dot representing fractions  $\leq 5\%$ . The upper red bar (where present) indicates the fraction of residues that have poor fit to the electron density. The numeric value is given above the bar.

Mol	Chain	Length	Quality of chain
1	A	351	 2% 91% 7%
2	B	20	 10% 90% 10%

## 2 Entry composition [i](#)

There are 5 unique types of molecules in this entry. The entry contains 3290 atoms, of which 14 are hydrogens and 0 are deuteriums.

In the tables below, the ZeroOcc column contains the number of atoms modelled with zero occupancy, the AltConf column contains the number of residues with at least one atom in alternate conformation and the Trace column contains the number of residues modelled with at most 2 atoms.

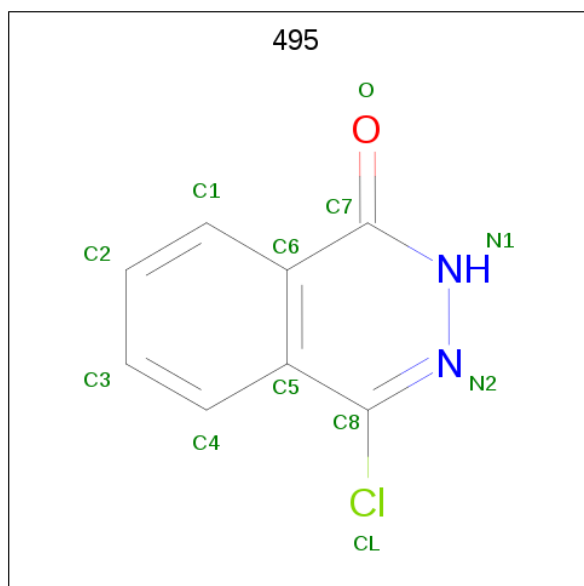
- Molecule 1 is a protein called cAMP-dependent protein kinase catalytic subunit alpha.

Mol	Chain	Residues	Atoms						ZeroOcc	AltConf	Trace
			Total	C	N	O	P	S			
1	A	346	2858	1846	479	522	3	8	0	3	0

- Molecule 2 is a protein called cAMP-dependent protein kinase inhibitor alpha.

Mol	Chain	Residues	Atoms				ZeroOcc	AltConf	Trace
			Total	C	N	O			
2	B	20	156	94	32	30	0	0	0

- Molecule 3 is 4-chlorophthalazin-1(2H)-one (three-letter code: 495) (formula: C<sub>8</sub>H<sub>5</sub>ClN<sub>2</sub>O).



Mol	Chain	Residues	Atoms					ZeroOcc	AltConf
			Total	C	Cl	N	O		
3	A	1	12	8	1	2	1	0	0

- Molecule 4 is (4S)-2-METHYL-2,4-PENTANEDIOL (three-letter code: MPD) (formula: C<sub>6</sub>H<sub>14</sub>O<sub>2</sub>).



Mol	Chain	Residues	Atoms	ZeroOcc	AltConf
4	A	1	Total C O 8 6 2	0	0
4	A	1	Total C O 8 6 2	0	0
4	A	1	Total C H O 22 6 14 2	0	0

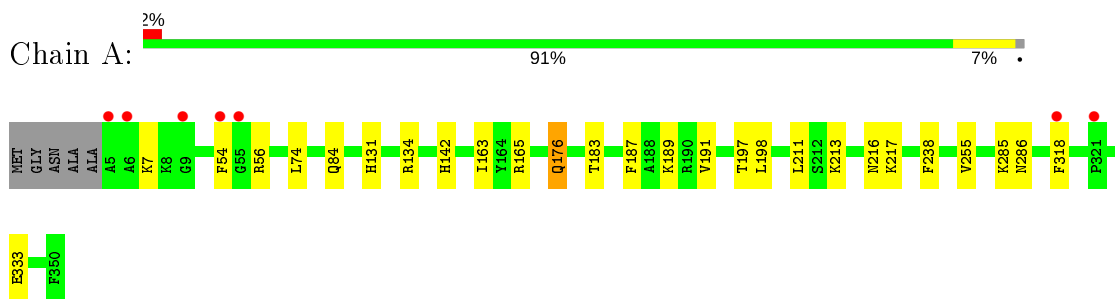
- Molecule 5 is water.

Mol	Chain	Residues	Atoms	ZeroOcc	AltConf
5	A	207	Total O 207 207	0	0
5	B	19	Total O 19 19	0	0

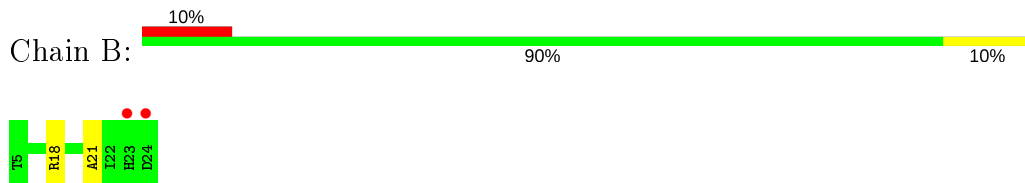
### 3 Residue-property plots [i](#)

These plots are drawn for all protein, RNA and DNA chains in the entry. The first graphic for a chain summarises the proportions of the various outlier classes displayed in the second graphic. The second graphic shows the sequence view annotated by issues in geometry and electron density. Residues are color-coded according to the number of geometric quality criteria for which they contain at least one outlier: green = 0, yellow = 1, orange = 2 and red = 3 or more. A red dot above a residue indicates a poor fit to the electron density ( $RSRZ > 2$ ). Stretches of 2 or more consecutive residues without any outlier are shown as a green connector. Residues present in the sample, but not in the model, are shown in grey.

- Molecule 1: cAMP-dependent protein kinase catalytic subunit alpha



- Molecule 2: cAMP-dependent protein kinase inhibitor alpha



## 4 Data and refinement statistics

Property	Value	Source
Space group	P 21 21 21	Depositor
Cell constants a, b, c, $\alpha$ , $\beta$ , $\gamma$	72.35Å 75.31Å 80.48Å 90.00° 90.00° 90.00°	Depositor
Resolution (Å)	36.17 – 1.89 36.17 – 1.89	Depositor EDS
% Data completeness (in resolution range)	99.3 (36.17-1.89) 99.3 (36.17-1.89)	Depositor EDS
$R_{merge}$	0.06	Depositor
$R_{sym}$	(Not available)	Depositor
$\langle I/\sigma(I) \rangle$ <sup>1</sup>	2.08 (at 1.89Å)	Xtrriage
Refinement program	PHENIX 1.9_1692	Depositor
R, $R_{free}$	0.170 , 0.218 0.172 , 0.220	Depositor DCC
$R_{free}$ test set	1840 reflections (5.16%)	wwPDB-VP
Wilson B-factor (Å <sup>2</sup> )	20.7	Xtrriage
Anisotropy	0.055	Xtrriage
Bulk solvent $k_{sol}$ (e/Å <sup>3</sup> ), $B_{sol}$ (Å <sup>2</sup> )	0.31 , 43.7	EDS
L-test for twinning <sup>2</sup>	$\langle  L  \rangle = 0.49$ , $\langle L^2 \rangle = 0.32$	Xtrriage
Estimated twinning fraction	0.021 for k,h,-l	Xtrriage
$F_o, F_c$ correlation	0.96	EDS
Total number of atoms	3290	wwPDB-VP
Average B, all atoms (Å <sup>2</sup> )	26.0	wwPDB-VP

Xtrriage's analysis on translational NCS is as follows: *The largest off-origin peak in the Patterson function is 4.94% of the height of the origin peak. No significant pseudotranslation is detected.*

<sup>1</sup>Intensities estimated from amplitudes.

<sup>2</sup>Theoretical values of  $\langle |L| \rangle$ ,  $\langle L^2 \rangle$  for acentric reflections are 0.5, 0.333 respectively for untwinned datasets, and 0.375, 0.2 for perfectly twinned datasets.

## 5 Model quality [i](#)

### 5.1 Standard geometry [i](#)

Bond lengths and bond angles in the following residue types are not validated in this section: TPO, 495, MPD, SEP

The Z score for a bond length (or angle) is the number of standard deviations the observed value is removed from the expected value. A bond length (or angle) with  $|Z| > 5$  is considered an outlier worth inspection. RMSZ is the root-mean-square of all Z scores of the bond lengths (or angles).

Mol	Chain	Bond lengths		Bond angles	
		RMSZ	# Z  >5	RMSZ	# Z  >5
1	A	0.38	0/2897	0.48	0/3900
2	B	0.39	0/158	0.50	0/212
All	All	0.38	0/3055	0.48	0/4112

There are no bond length outliers.

There are no bond angle outliers.

There are no chirality outliers.

There are no planarity outliers.

### 5.2 Too-close contacts [i](#)

In the following table, the Non-H and H(model) columns list the number of non-hydrogen atoms and hydrogen atoms in the chain respectively. The H(added) column lists the number of hydrogen atoms added and optimized by MolProbity. The Clashes column lists the number of clashes within the asymmetric unit, whereas Symm-Clashes lists symmetry related clashes.

Mol	Chain	Non-H	H(model)	H(added)	Clashes	Symm-Clashes
1	A	2858	0	2822	23	0
2	B	156	0	146	2	0
3	A	12	0	5	1	0
4	A	24	14	42	4	0
5	A	207	0	0	6	1
5	B	19	0	0	1	0
All	All	3276	14	3015	26	1

The all-atom clashscore is defined as the number of clashes found per 1000 atoms (including hydrogen atoms). The all-atom clashscore for this structure is 4.

All (26) close contacts within the same asymmetric unit are listed below, sorted by their clash

magnitude.

Atom-1	Atom-2	Interatomic distance (Å)	Clash overlap (Å)
1:A:183:THR:OG1	3:A:401:495:CL	2.35	0.81
1:A:7:LYS:NZ	5:A:502:HOH:O	2.16	0.78
1:A:54:PHE:HB2	1:A:74:LEU:HD22	1.65	0.78
4:A:404:MPD:O4	5:A:501:HOH:O	2.04	0.76
1:A:54:PHE:CZ	1:A:84:GLN:HG3	2.25	0.71
1:A:134:ARG:HD3	4:A:404:MPD:H53	1.80	0.64
1:A:54:PHE:HZ	1:A:84:GLN:HG3	1.66	0.60
1:A:56:ARG:NH2	1:A:333:GLU:HB3	2.20	0.56
1:A:285:LYS:HE3	1:A:286:ASN:OD1	2.06	0.56
1:A:189:LYS:HG2	1:A:191:VAL:CG2	2.36	0.56
1:A:216:ASN:HB2	5:A:639:HOH:O	2.06	0.56
1:A:176:GLN:NE2	1:A:318:PHE:HB2	2.21	0.55
2:B:18:ARG:NH2	5:B:101:HOH:O	2.43	0.52
1:A:285:LYS:HG3	1:A:286:ASN:N	2.25	0.51
1:A:142:HIS:ND1	5:A:503:HOH:O	2.35	0.49
4:A:403:MPD:H12	4:A:403:MPD:O4	2.11	0.49
1:A:163:ILE:HG22	1:A:165:ARG:HG3	1.95	0.48
1:A:217:LYS:HD3	5:A:679:HOH:O	2.13	0.47
1:A:131:HIS:ND1	4:A:404:MPD:H4	2.31	0.45
1:A:189:LYS:HG2	1:A:191:VAL:HG23	1.97	0.45
1:A:187:PHE:HE2	2:B:21:ALA:HB1	1.83	0.43
1:A:238:PHE:CE1	1:A:255:VAL:HG22	2.54	0.43
1:A:176:GLN:NE2	5:A:515:HOH:O	2.54	0.41
1:A:189:LYS:NZ	1:A:197:TPO:O1P	2.52	0.41
1:A:238:PHE:CZ	1:A:255:VAL:HG22	2.56	0.41
1:A:211:LEU:HB2	1:A:213:LYS:HD3	2.03	0.41

All (1) symmetry-related close contacts are listed below. The label for Atom-2 includes the symmetry operator and encoded unit-cell translations to be applied.

Atom-1	Atom-2	Interatomic distance (Å)	Clash overlap (Å)
5:A:701:HOH:O	5:A:702:HOH:O 2_555	2.19	0.01

## 5.3 Torsion angles [i](#)

### 5.3.1 Protein backbone [i](#)

In the following table, the Percentiles column shows the percent Ramachandran outliers of the chain as a percentile score with respect to all X-ray entries followed by that with respect to entries



of similar resolution.

The Analysed column shows the number of residues for which the backbone conformation was analysed, and the total number of residues.

Mol	Chain	Analysed	Favoured	Allowed	Outliers	Percentiles	
1	A	344/351 (98%)	334 (97%)	10 (3%)	0	100	100
2	B	18/20 (90%)	18 (100%)	0	0	100	100
All	All	362/371 (98%)	352 (97%)	10 (3%)	0	100	100

There are no Ramachandran outliers to report.

### 5.3.2 Protein sidechains [i](#)

In the following table, the Percentiles column shows the percent sidechain outliers of the chain as a percentile score with respect to all X-ray entries followed by that with respect to entries of similar resolution.

The Analysed column shows the number of residues for which the sidechain conformation was analysed, and the total number of residues.

Mol	Chain	Analysed	Rotameric	Outliers	Percentiles	
1	A	300/303 (99%)	298 (99%)	2 (1%)	84	84
2	B	15/15 (100%)	15 (100%)	0	100	100
All	All	315/318 (99%)	313 (99%)	2 (1%)	86	87

All (2) residues with a non-rotameric sidechain are listed below:

Mol	Chain	Res	Type
1	A	176	GLN
1	A	198	LEU

Some sidechains can be flipped to improve hydrogen bonding and reduce clashes. All (1) such sidechains are listed below:

Mol	Chain	Res	Type
1	A	176	GLN

### 5.3.3 RNA [i](#)

There are no RNA molecules in this entry.

## 5.4 Non-standard residues in protein, DNA, RNA chains [i](#)

3 non-standard protein/DNA/RNA residues are modelled in this entry.

In the following table, the Counts columns list the number of bonds (or angles) for which Mogul statistics could be retrieved, the number of bonds (or angles) that are observed in the model and the number of bonds (or angles) that are defined in the Chemical Component Dictionary. The Link column lists molecule types, if any, to which the group is linked. The Z score for a bond length (or angle) is the number of standard deviations the observed value is removed from the expected value. A bond length (or angle) with  $|Z| > 2$  is considered an outlier worth inspection. RMSZ is the root-mean-square of all Z scores of the bond lengths (or angles).

Mol	Type	Chain	Res	Link	Bond lengths			Bond angles		
					Counts	RMSZ	# Z  > 2	Counts	RMSZ	# Z  > 2
1	SEP	A	10	1	8,9,10	1.58	1 (12%)	8,12,14	1.70	2 (25%)
1	SEP	A	338	1	8,9,10	1.44	1 (12%)	8,12,14	1.66	3 (37%)
1	TPO	A	197	1	8,10,11	1.02	0	10,14,16	1.81	2 (20%)

In the following table, the Chirals column lists the number of chiral outliers, the number of chiral centers analysed, the number of these observed in the model and the number defined in the Chemical Component Dictionary. Similar counts are reported in the Torsions and Rings columns. '-' means no outliers of that kind were identified.

Mol	Type	Chain	Res	Link	Chirals	Torsions	Rings
1	SEP	A	10	1	-	4/5/8/10	-
1	SEP	A	338	1	-	2/5/8/10	-
1	TPO	A	197	1	-	1/9/11/13	-

All (2) bond length outliers are listed below:

Mol	Chain	Res	Type	Atoms	Z	Observed(Å)	Ideal(Å)
1	A	10	SEP	P-O1P	3.46	1.61	1.50
1	A	338	SEP	P-O1P	3.06	1.60	1.50

All (7) bond angle outliers are listed below:

Mol	Chain	Res	Type	Atoms	Z	Observed(°)	Ideal(°)
1	A	197	TPO	P-OG1-CB	-4.43	109.82	123.21
1	A	338	SEP	OG-CB-CA	3.50	111.55	108.14
1	A	10	SEP	OG-CB-CA	3.27	111.33	108.14
1	A	10	SEP	P-OG-CB	-2.99	110.05	118.30
1	A	197	TPO	CG2-CB-CA	-2.81	107.62	113.16
1	A	338	SEP	P-OG-CB	-2.18	112.30	118.30
1	A	338	SEP	O2P-P-OG	2.02	112.10	106.73

There are no chirality outliers.

All (7) torsion outliers are listed below:

Mol	Chain	Res	Type	Atoms
1	A	10	SEP	N-CA-CB-OG
1	A	10	SEP	CB-OG-P-O1P
1	A	10	SEP	CB-OG-P-O2P
1	A	10	SEP	CB-OG-P-O3P
1	A	338	SEP	CA-CB-OG-P
1	A	338	SEP	N-CA-CB-OG
1	A	197	TPO	CB-OG1-P-O3P

There are no ring outliers.

1 monomer is involved in 1 short contact:

Mol	Chain	Res	Type	Clashes	Symm-Clashes
1	A	197	TPO	1	0

## 5.5 Carbohydrates [i](#)

There are no carbohydrates in this entry.

## 5.6 Ligand geometry [i](#)

4 ligands are modelled in this entry.

In the following table, the Counts columns list the number of bonds (or angles) for which Mogul statistics could be retrieved, the number of bonds (or angles) that are observed in the model and the number of bonds (or angles) that are defined in the Chemical Component Dictionary. The Link column lists molecule types, if any, to which the group is linked. The Z score for a bond length (or angle) is the number of standard deviations the observed value is removed from the expected value. A bond length (or angle) with  $|Z| > 2$  is considered an outlier worth inspection. RMSZ is the root-mean-square of all Z scores of the bond lengths (or angles).

Mol	Type	Chain	Res	Link	Bond lengths			Bond angles		
					Counts	RMSZ	$\# Z  > 2$	Counts	RMSZ	$\# Z  > 2$
4	MPD	A	402	-	7,7,7	0.25	0	9,10,10	0.19	0
3	495	A	401	-	12,13,13	1.44	1 (8%)	13,18,18	2.09	4 (30%)
4	MPD	A	403	-	7,7,7	0.31	0	9,10,10	0.44	0
4	MPD	A	404	-	7,7,7	0.29	0	9,10,10	0.43	0

In the following table, the Chirals column lists the number of chiral outliers, the number of chiral centers analysed, the number of these observed in the model and the number defined in the

Chemical Component Dictionary. Similar counts are reported in the Torsion and Rings columns. '-' means no outliers of that kind were identified.

Mol	Type	Chain	Res	Link	Chirals	Torsions	Rings
4	MPD	A	402	-	-	0/5/5/5	-
3	495	A	401	-	-	-	0/2/2/2
4	MPD	A	403	-	-	3/5/5/5	-
4	MPD	A	404	-	-	0/5/5/5	-

All (1) bond length outliers are listed below:

Mol	Chain	Res	Type	Atoms	Z	Observed(Å)	Ideal(Å)
3	A	401	495	C7-N1	2.25	1.40	1.31

All (4) bond angle outliers are listed below:

Mol	Chain	Res	Type	Atoms	Z	Observed(°)	Ideal(°)
3	A	401	495	C5-C8-N2	-4.08	120.42	125.81
3	A	401	495	CL-C8-N2	3.94	119.80	115.05
3	A	401	495	C8-N2-N1	3.61	121.82	119.14
3	A	401	495	C7-N1-N2	2.51	121.63	119.32

There are no chirality outliers.

All (3) torsion outliers are listed below:

Mol	Chain	Res	Type	Atoms
4	A	403	MPD	C1-C2-C3-C4
4	A	403	MPD	O2-C2-C3-C4
4	A	403	MPD	CM-C2-C3-C4

There are no ring outliers.

3 monomers are involved in 5 short contacts:

Mol	Chain	Res	Type	Clashes	Symm-Clashes
3	A	401	495	1	0
4	A	403	MPD	1	0
4	A	404	MPD	3	0

## 5.7 Other polymers [\(i\)](#)

There are no such residues in this entry.

## 5.8 Polymer linkage issues

There are no chain breaks in this entry.

## 6 Fit of model and data [i](#)

### 6.1 Protein, DNA and RNA chains [i](#)

In the following table, the column labelled ‘#RSRZ> 2’ contains the number (and percentage) of RSRZ outliers, followed by percent RSRZ outliers for the chain as percentile scores relative to all X-ray entries and entries of similar resolution. The OWAB column contains the minimum, median, 95<sup>th</sup> percentile and maximum values of the occupancy-weighted average B-factor per residue. The column labelled ‘Q< 0.9’ lists the number of (and percentage) of residues with an average occupancy less than 0.9.

Mol	Chain	Analysed	<RSRZ>	#RSRZ>2	OWAB(Å <sup>2</sup> )	Q<0.9
1	A	343/351 (97%)	-0.17	7 (2%) 65 68	12, 22, 45, 81	0
2	B	20/20 (100%)	0.05	2 (10%) 7 8	16, 20, 69, 83	0
All	All	363/371 (97%)	-0.16	9 (2%) 57 60	12, 22, 46, 83	0

All (9) RSRZ outliers are listed below:

Mol	Chain	Res	Type	RSRZ
1	A	6	ALA	5.3
1	A	9	GLY	4.5
2	B	24	ASP	4.5
1	A	318	PHE	3.3
1	A	54	PHE	2.8
1	A	5	ALA	2.3
1	A	321	PRO	2.3
2	B	23	HIS	2.1
1	A	55	GLY	2.1

### 6.2 Non-standard residues in protein, DNA, RNA chains [i](#)

In the following table, the Atoms column lists the number of modelled atoms in the group and the number defined in the chemical component dictionary. The B-factors column lists the minimum, median, 95<sup>th</sup> percentile and maximum values of B factors of atoms in the group. The column labelled ‘Q< 0.9’ lists the number of atoms with occupancy less than 0.9.

Mol	Type	Chain	Res	Atoms	RSCC	RSR	B-factors(Å <sup>2</sup> )	Q<0.9
1	SEP	A	10	10/11	0.73	0.22	45,63,84,90	0
1	SEP	A	338	10/11	0.96	0.14	25,29,32,34	0
1	TPO	A	197	11/12	0.99	0.07	15,18,19,21	0

### 6.3 Carbohydrates [i](#)

There are no carbohydrates in this entry.

### 6.4 Ligands [i](#)

In the following table, the Atoms column lists the number of modelled atoms in the group and the number defined in the chemical component dictionary. The B-factors column lists the minimum, median, 95<sup>th</sup> percentile and maximum values of B factors of atoms in the group. The column labelled 'Q< 0.9' lists the number of atoms with occupancy less than 0.9.

Mol	Type	Chain	Res	Atoms	RSCC	RSR	B-factors(Å <sup>2</sup> )	Q<0.9
4	MPD	A	404	8/8	0.74	0.40	45,55,58,66	22
4	MPD	A	403	8/8	0.92	0.10	30,35,39,39	0
3	495	A	401	12/12	0.93	0.10	20,23,26,45	1
4	MPD	A	402	8/8	0.95	0.08	33,35,37,38	0

### 6.5 Other polymers [i](#)

There are no such residues in this entry.