



# Full wwPDB X-ray Structure Validation Report ⓘ

Aug 22, 2023 – 05:00 PM EDT

PDB ID : 3BUP  
Title : Golgi alpha-mannosidase II D341N acid-base catalyst mutant with bound man-  
nose  
Authors : Kuntz, D.A.; Rose, D.R.  
Deposited on : 2008-01-03  
Resolution : 2.03 Å(reported)

This is a Full wwPDB X-ray Structure Validation Report for a publicly released PDB entry.

We welcome your comments at [validation@mail.wwpdb.org](mailto:validation@mail.wwpdb.org)

A user guide is available at

<https://www.wwpdb.org/validation/2017/XrayValidationReportHelp>

with specific help available everywhere you see the ⓘ symbol.

The types of validation reports are described at

<http://www.wwpdb.org/validation/2017/FAQs#types>.

---

The following versions of software and data (see [references ⓘ](#)) were used in the production of this report:

MolProbity : 4.02b-467  
Mogul : 1.8.5 (274361), CSD as541be (2020)  
Xtriage (Phenix) : 1.13  
EDS : 2.35  
Percentile statistics : 20191225.v01 (using entries in the PDB archive December 25th 2019)  
Refmac : 5.8.0158  
CCP4 : 7.0.044 (Gargrove)  
Ideal geometry (proteins) : Engh & Huber (2001)  
Ideal geometry (DNA, RNA) : Parkinson et al. (1996)  
Validation Pipeline (wwPDB-VP) : 2.35

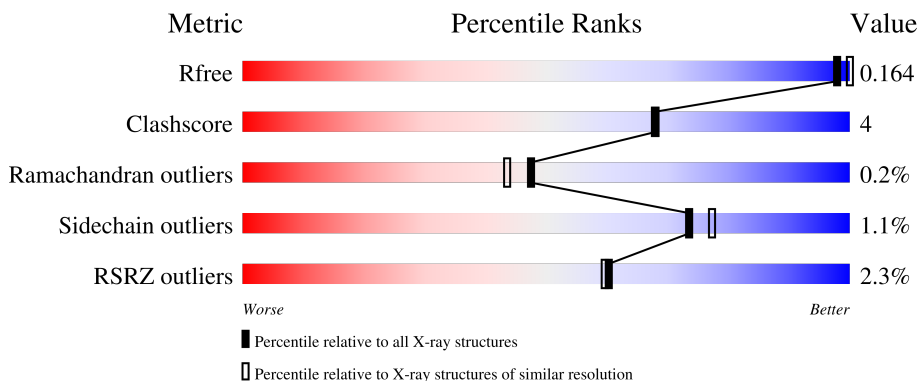
# 1 Overall quality at a glance

The following experimental techniques were used to determine the structure:

*X-RAY DIFFRACTION*

The reported resolution of this entry is 2.03 Å.

Percentile scores (ranging between 0-100) for global validation metrics of the entry are shown in the following graphic. The table shows the number of entries on which the scores are based.



Metric	Whole archive (#Entries)	Similar resolution (#Entries, resolution range(Å))
$R_{free}$	130704	10434 (2.04-2.00)
Clashscore	141614	11643 (2.04-2.00)
Ramachandran outliers	138981	11493 (2.04-2.00)
Sidechain outliers	138945	11492 (2.04-2.00)
RSRZ outliers	127900	10220 (2.04-2.00)

The table below summarises the geometric issues observed across the polymeric chains and their fit to the electron density. The red, orange, yellow and green segments of the lower bar indicate the fraction of residues that contain outliers for  $\geq 3$ , 2, 1 and 0 types of geometric quality criteria respectively. A grey segment represents the fraction of residues that are not modelled. The numeric value for each fraction is indicated below the corresponding segment, with a dot representing fractions  $\leq 5\%$ . The upper red bar (where present) indicates the fraction of residues that have poor fit to the electron density. The numeric value is given above the bar.

Mol	Chain	Length	Quality of chain
1	A	1045	

The following table lists non-polymeric compounds, carbohydrate monomers and non-standard residues in protein, DNA, RNA chains that are outliers for geometric or electron-density-fit criteria:

Mol	Type	Chain	Res	Chirality	Geometry	Clashes	Electron density
2	NAG	A	1046	X	-	-	-

## 2 Entry composition [i](#)

There are 6 unique types of molecules in this entry. The entry contains 9420 atoms, of which 0 are hydrogens and 0 are deuteriums.

In the tables below, the ZeroOcc column contains the number of atoms modelled with zero occupancy, the AltConf column contains the number of residues with at least one atom in alternate conformation and the Trace column contains the number of residues modelled with at most 2 atoms.

- Molecule 1 is a protein called Alpha-mannosidase 2.

Mol	Chain	Residues	Atoms					ZeroOcc	AltConf	Trace
			Total	C	N	O	S			
1	A	1015	8280	5260	1456	1525	39	0	13	0

There are 14 discrepancies between the modelled and reference sequences:

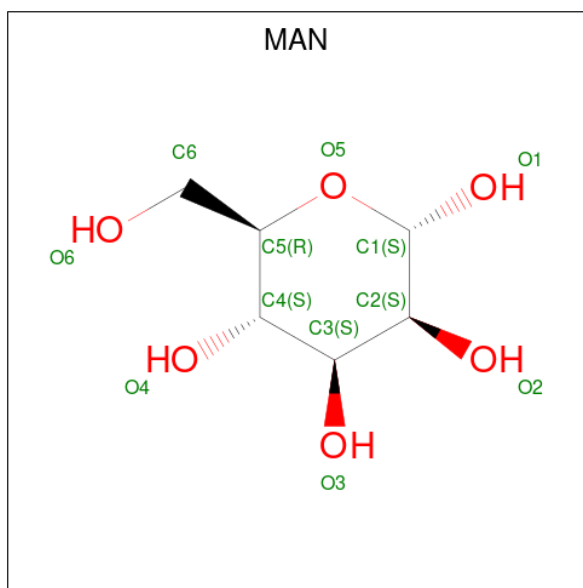
Chain	Residue	Modelled	Actual	Comment	Reference
A	1	ARG	-	expression tag	UNP Q24451
A	2	SER	-	expression tag	UNP Q24451
A	3	SER	-	expression tag	UNP Q24451
A	4	HIS	-	expression tag	UNP Q24451
A	5	HIS	-	expression tag	UNP Q24451
A	6	HIS	-	expression tag	UNP Q24451
A	7	HIS	-	expression tag	UNP Q24451
A	8	HIS	-	expression tag	UNP Q24451
A	9	HIS	-	expression tag	UNP Q24451
A	10	GLY	-	expression tag	UNP Q24451
A	11	GLU	-	expression tag	UNP Q24451
A	12	PHE	-	expression tag	UNP Q24451
A	341	ASN	ASP	engineered mutation	UNP Q24451
A	907	LYS	GLU	SEE REMARK 999	UNP Q24451

- Molecule 2 is 2-acetamido-2-deoxy-beta-D-glucopyranose (three-letter code: NAG) (formula: C<sub>8</sub>H<sub>15</sub>NO<sub>6</sub>).



Mol	Chain	Residues	Atoms				ZeroOcc	AltConf
			Total	C	N	O		
2	A	1	14	8	1	5	0	0

- Molecule 3 is alpha-D-mannopyranose (three-letter code: MAN) (formula: C<sub>6</sub>H<sub>12</sub>O<sub>6</sub>).

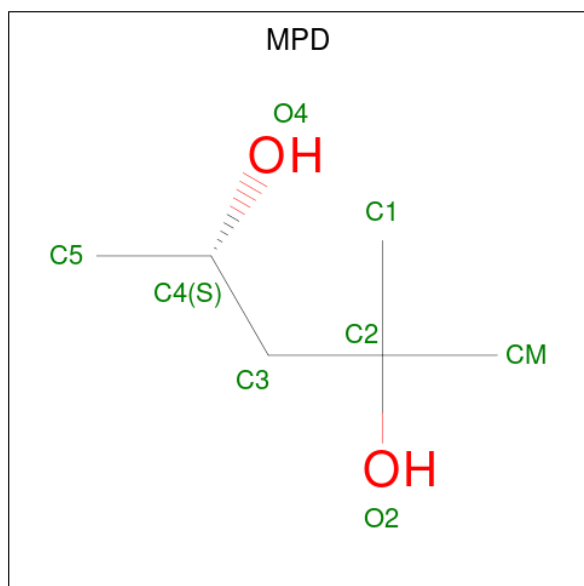


Mol	Chain	Residues	Atoms			ZeroOcc	AltConf
			Total	C	O		
3	A	1	12	6	6	0	0

- Molecule 4 is ZINC ION (three-letter code: ZN) (formula: Zn).

Mol	Chain	Residues	Atoms		ZeroOcc	AltConf
4	A	1	Total	Zn	0	0
			1	1		

- Molecule 5 is (4S)-2-METHYL-2,4-PENTANEDIOL (three-letter code: MPD) (formula: C<sub>6</sub>H<sub>14</sub>O<sub>2</sub>).



Mol	Chain	Residues	Atoms			ZeroOcc	AltConf
5	A	1	Total	C	O	0	0
			8	6	2		

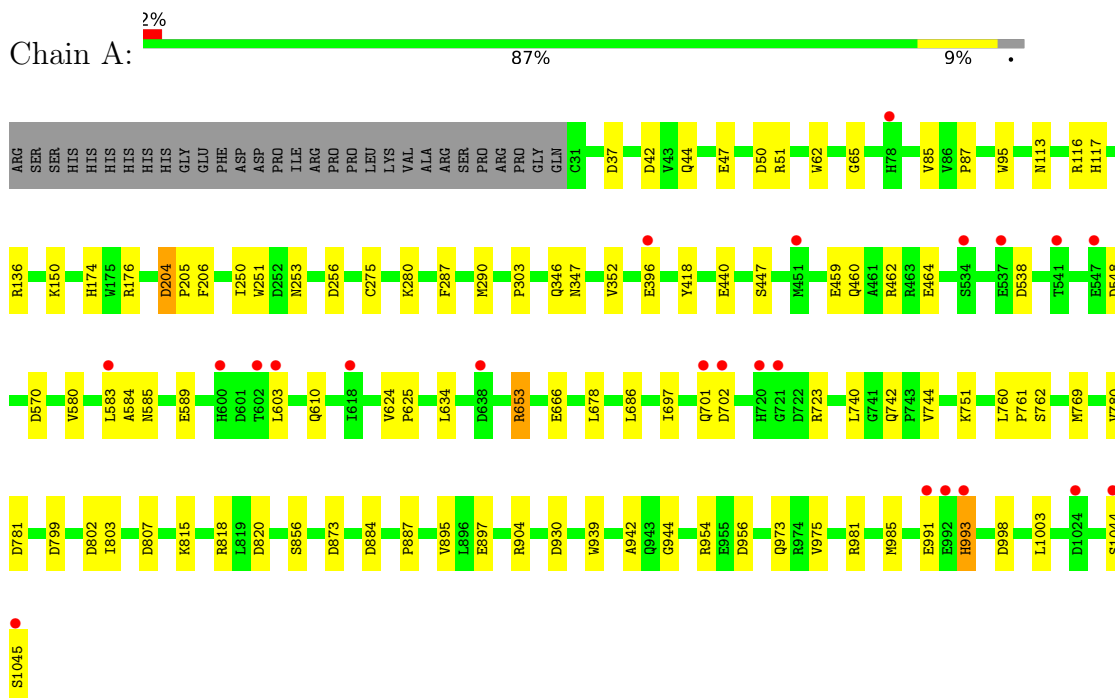
- Molecule 6 is water.

Mol	Chain	Residues	Atoms		ZeroOcc	AltConf
6	A	1105	Total	O	0	0
			1105	1105		

### 3 Residue-property plots [i](#)

These plots are drawn for all protein, RNA, DNA and oligosaccharide chains in the entry. The first graphic for a chain summarises the proportions of the various outlier classes displayed in the second graphic. The second graphic shows the sequence view annotated by issues in geometry and electron density. Residues are color-coded according to the number of geometric quality criteria for which they contain at least one outlier: green = 0, yellow = 1, orange = 2 and red = 3 or more. A red dot above a residue indicates a poor fit to the electron density ( $RSRZ > 2$ ). Stretches of 2 or more consecutive residues without any outlier are shown as a green connector. Residues present in the sample, but not in the model, are shown in grey.

- Molecule 1: Alpha-mannosidase 2



## 4 Data and refinement statistics

Property	Value	Source
Space group	P 21 21 21	Depositor
Cell constants a, b, c, $\alpha$ , $\beta$ , $\gamma$	68.67Å 109.49Å 138.58Å 90.00° 90.00° 90.00°	Depositor
Resolution (Å)	19.79 – 2.03 19.79 – 2.03	Depositor EDS
% Data completeness (in resolution range)	96.8 (19.79-2.03) 96.8 (19.79-2.03)	Depositor EDS
$R_{merge}$	0.07	Depositor
$R_{sym}$	(Not available)	Depositor
$\langle I/\sigma(I) \rangle$ <sup>1</sup>	2.59 (at 2.02Å)	Xtrriage
Refinement program	REFMAC, CNS	Depositor
R, $R_{free}$	0.152 , 0.195 0.156 , 0.164	Depositor DCC
$R_{free}$ test set	2280 reflections (3.44%)	wwPDB-VP
Wilson B-factor (Å <sup>2</sup> )	20.1	Xtrriage
Anisotropy	0.063	Xtrriage
Bulk solvent $k_{sol}$ (e/Å <sup>3</sup> ), $B_{sol}$ (Å <sup>2</sup> )	0.33 , 49.5	EDS
L-test for twinning <sup>2</sup>	$\langle  L  \rangle = 0.47$ , $\langle L^2 \rangle = 0.30$	Xtrriage
Estimated twinning fraction	No twinning to report.	Xtrriage
$F_o, F_c$ correlation	0.96	EDS
Total number of atoms	9420	wwPDB-VP
Average B, all atoms (Å <sup>2</sup> )	19.0	wwPDB-VP

Xtrriage's analysis on translational NCS is as follows: *The largest off-origin peak in the Patterson function is 4.51% of the height of the origin peak. No significant pseudotranslation is detected.*

<sup>1</sup>Intensities estimated from amplitudes.

<sup>2</sup>Theoretical values of  $\langle |L| \rangle$ ,  $\langle L^2 \rangle$  for acentric reflections are 0.5, 0.333 respectively for untwinned datasets, and 0.375, 0.2 for perfectly twinned datasets.

## 5 Model quality [i](#)

### 5.1 Standard geometry [i](#)

Bond lengths and bond angles in the following residue types are not validated in this section: NAG, MPD, ZN, MAN

The Z score for a bond length (or angle) is the number of standard deviations the observed value is removed from the expected value. A bond length (or angle) with  $|Z| > 5$  is considered an outlier worth inspection. RMSZ is the root-mean-square of all Z scores of the bond lengths (or angles).

Mol	Chain	Bond lengths		Bond angles	
		RMSZ	# Z  >5	RMSZ	# Z  >5
1	A	0.58	0/8530	0.74	17/11581 (0.1%)

There are no bond length outliers.

All (17) bond angle outliers are listed below:

Mol	Chain	Res	Type	Atoms	Z	Observed(°)	Ideal(°)
1	A	799	ASP	CB-CG-OD2	5.85	123.57	118.30
1	A	873	ASP	CB-CG-OD2	5.76	123.48	118.30
1	A	548	ASP	CB-CG-OD2	5.73	123.45	118.30
1	A	570	ASP	CB-CG-OD2	5.72	123.45	118.30
1	A	930	ASP	CB-CG-OD2	5.61	123.35	118.30
1	A	50	ASP	CB-CG-OD2	5.60	123.34	118.30
1	A	802	ASP	CB-CG-OD2	5.53	123.27	118.30
1	A	42	ASP	CB-CG-OD2	5.42	123.18	118.30
1	A	781	ASP	CB-CG-OD2	5.41	123.17	118.30
1	A	998	ASP	CB-CG-OD2	5.39	123.15	118.30
1	A	884	ASP	CB-CG-OD2	5.34	123.11	118.30
1	A	956	ASP	CB-CG-OD2	5.28	123.06	118.30
1	A	820	ASP	CB-CG-OD2	5.12	122.91	118.30
1	A	37	ASP	CB-CG-OD2	5.04	122.84	118.30
1	A	538[A]	ASP	CB-CG-OD2	5.03	122.83	118.30
1	A	538[B]	ASP	CB-CG-OD2	5.03	122.83	118.30
1	A	807	ASP	CB-CG-OD2	5.01	122.81	118.30

There are no chirality outliers.

There are no planarity outliers.



## 5.2 Too-close contacts

In the following table, the Non-H and H(model) columns list the number of non-hydrogen atoms and hydrogen atoms in the chain respectively. The H(added) column lists the number of hydrogen atoms added and optimized by MolProbity. The Clashes column lists the number of clashes within the asymmetric unit, whereas Symm-Clashes lists symmetry-related clashes.

Mol	Chain	Non-H	H(model)	H(added)	Clashes	Symm-Clashes
1	A	8280	0	8072	62	0
2	A	14	0	13	0	0
3	A	12	0	10	1	0
4	A	1	0	0	0	0
5	A	8	0	14	0	0
6	A	1105	0	0	18	0
All	All	9420	0	8109	62	0

The all-atom clashscore is defined as the number of clashes found per 1000 atoms (including hydrogen atoms). The all-atom clashscore for this structure is 4.

All (62) close contacts within the same asymmetric unit are listed below, sorted by their clash magnitude.

Atom-1	Atom-2	Interatomic distance (Å)	Clash overlap (Å)
1:A:583:LEU:HD22	1:A:944:GLY:HA2	1.32	1.09
1:A:583:LEU:CD2	1:A:944:GLY:HA2	1.95	0.95
1:A:250:ILE:HD11	6:A:1652:HOH:O	1.75	0.85
1:A:583:LEU:CD2	1:A:944:GLY:CA	2.55	0.84
1:A:47:GLU:OE2	1:A:51:ARG:HD3	1.78	0.83
1:A:583:LEU:HB2	6:A:1524:HOH:O	1.80	0.81
1:A:583:LEU:HD23	1:A:944:GLY:CA	2.11	0.80
1:A:583:LEU:CB	6:A:1524:HOH:O	2.31	0.78
1:A:583:LEU:HD23	1:A:944:GLY:N	2.02	0.75
1:A:256:ASP:HB2	6:A:2046:HOH:O	1.86	0.74
1:A:589:GLU:OE1	1:A:751:LYS:HD3	1.88	0.73
1:A:742:GLN:HG3	6:A:2012:HOH:O	1.97	0.64
1:A:117:HIS:HE2	1:A:347[B]:ASN:CG	2.00	0.64
1:A:117:HIS:NE2	1:A:347[A]:ASN:OD1	2.31	0.60
1:A:702:ASP:HB3	6:A:2028:HOH:O	2.01	0.59
1:A:740:LEU:HD22	1:A:760:LEU:HD22	1.86	0.58
1:A:583:LEU:CD2	1:A:944:GLY:N	2.67	0.56
1:A:653:ARG:HG3	1:A:744:VAL:HG22	1.86	0.56
1:A:396:GLU:HB2	6:A:1643:HOH:O	2.08	0.54
1:A:116:ARG:HD3	1:A:347[B]:ASN:HD21	1.72	0.53
1:A:678:LEU:HD12	1:A:769:MET:HE1	1.90	0.53

*Continued on next page...*

*Continued from previous page...*

Atom-1	Atom-2	Interatomic distance (Å)	Clash overlap (Å)
1:A:954:ARG:NH2	1:A:981[B]:ARG:NH1	2.57	0.52
1:A:580:VAL:HG22	1:A:634:LEU:HD22	1.91	0.51
1:A:610:GLN:HG3	6:A:1993:HOH:O	2.10	0.51
1:A:113:ASN:OD1	1:A:347[B]:ASN:ND2	2.37	0.51
1:A:204:ASP:H	1:A:205:PRO:HD3	1.75	0.51
1:A:895:VAL:HG12	1:A:897:GLU:HG3	1.93	0.51
1:A:701:GLN:HG2	6:A:2027:HOH:O	2.10	0.50
1:A:204:ASP:H	1:A:205:PRO:CD	2.24	0.50
1:A:150:LYS:HD3	6:A:1401:HOH:O	2.12	0.49
1:A:686:LEU:HD22	1:A:697:ILE:HG12	1.93	0.49
1:A:954:ARG:HH21	1:A:981[B]:ARG:NH1	2.11	0.48
1:A:993:HIS:H	1:A:993:HIS:CD2	2.18	0.48
1:A:204:ASP:N	1:A:205:PRO:CD	2.76	0.48
1:A:136:ARG:HD3	6:A:1368:HOH:O	2.13	0.47
1:A:290:MET:HG2	1:A:303:PRO:HG2	1.97	0.47
1:A:975:VAL:HG21	1:A:1003:LEU:CD1	2.45	0.46
1:A:459:GLU:HG3	6:A:1790:HOH:O	2.15	0.46
1:A:85:VAL:O	1:A:87:PRO:HD3	2.16	0.45
1:A:460:GLN:O	1:A:464:GLU:HG2	2.16	0.45
1:A:440:GLU:OE2	1:A:462:ARG:HD3	2.18	0.44
1:A:603:LEU:HD23	6:A:1994:HOH:O	2.16	0.44
1:A:818[B]:ARG:HD3	1:A:856:SER:O	2.17	0.44
1:A:653:ARG:NH2	6:A:1998:HOH:O	2.49	0.44
1:A:981[A]:ARG:NH2	6:A:1688:HOH:O	2.31	0.44
1:A:253:ASN:HB2	6:A:2051:HOH:O	2.19	0.43
1:A:780:VAL:O	1:A:887:PRO:HA	2.19	0.43
1:A:62:TRP:CD2	1:A:65:GLY:HA3	2.54	0.43
1:A:904:ARG:HG2	1:A:985:MET:SD	2.59	0.43
1:A:251:TRP:CD1	1:A:251:TRP:C	2.92	0.42
1:A:751:LYS:HD2	6:A:1934:HOH:O	2.19	0.42
1:A:939:TRP:CD2	1:A:942:ALA:HB2	2.55	0.42
1:A:973:GLN:HG2	1:A:1045:SER:OG	2.18	0.42
1:A:174:HIS:CE1	1:A:176:ARG:HD3	2.55	0.41
1:A:761:PRO:O	1:A:762:SER:HB2	2.20	0.41
1:A:206:PHE:HB2	1:A:418:TYR:CE2	2.55	0.41
1:A:287:PHE:HB3	1:A:352:VAL:HG22	2.02	0.41
1:A:803:ILE:HD12	1:A:815:LYS:HE2	2.02	0.41
1:A:584:ALA:O	1:A:585:ASN:CB	2.69	0.41
1:A:204:ASP:OD1	3:A:1047:MAN:C2	2.69	0.40
1:A:280:LYS:HE2	6:A:1267:HOH:O	2.20	0.40
1:A:624:VAL:HA	1:A:625:PRO:HD3	1.93	0.40

There are no symmetry-related clashes.

## 5.3 Torsion angles [i](#)

### 5.3.1 Protein backbone [i](#)

In the following table, the Percentiles column shows the percent Ramachandran outliers of the chain as a percentile score with respect to all X-ray entries followed by that with respect to entries of similar resolution.

The Analysed column shows the number of residues for which the backbone conformation was analysed, and the total number of residues.

Mol	Chain	Analysed	Favoured	Allowed	Outliers	Percentiles
1	A	1026/1045 (98%)	996 (97%)	28 (3%)	2 (0%)	47 43

All (2) Ramachandran outliers are listed below:

Mol	Chain	Res	Type
1	A	95	TRP
1	A	204	ASP

### 5.3.2 Protein sidechains [i](#)

In the following table, the Percentiles column shows the percent sidechain outliers of the chain as a percentile score with respect to all X-ray entries followed by that with respect to entries of similar resolution.

The Analysed column shows the number of residues for which the sidechain conformation was analysed, and the total number of residues.

Mol	Chain	Analysed	Rotameric	Outliers	Percentiles
1	A	915/929 (98%)	904 (99%)	11 (1%)	71 75

All (11) residues with a non-rotameric sidechain are listed below:

Mol	Chain	Res	Type
1	A	44	GLN
1	A	275	CYS
1	A	346[A]	GLN
1	A	346[B]	GLN
1	A	447	SER
1	A	653	ARG

*Continued on next page...*

*Continued from previous page...*

Mol	Chain	Res	Type
1	A	666	GLU
1	A	723	ARG
1	A	991	GLU
1	A	993	HIS
1	A	1044	SER

Sometimes sidechains can be flipped to improve hydrogen bonding and reduce clashes. All (3) such sidechains are listed below:

Mol	Chain	Res	Type
1	A	586	ASN
1	A	599	HIS
1	A	993	HIS

### 5.3.3 RNA [i](#)

There are no RNA molecules in this entry.

## 5.4 Non-standard residues in protein, DNA, RNA chains [i](#)

There are no non-standard protein/DNA/RNA residues in this entry.

## 5.5 Carbohydrates [i](#)

There are no monosaccharides in this entry.

## 5.6 Ligand geometry [i](#)

Of 4 ligands modelled in this entry, 1 is monoatomic - leaving 3 for Mogul analysis.

In the following table, the Counts columns list the number of bonds (or angles) for which Mogul statistics could be retrieved, the number of bonds (or angles) that are observed in the model and the number of bonds (or angles) that are defined in the Chemical Component Dictionary. The Link column lists molecule types, if any, to which the group is linked. The Z score for a bond length (or angle) is the number of standard deviations the observed value is removed from the expected value. A bond length (or angle) with  $|Z| > 2$  is considered an outlier worth inspection. RMSZ is the root-mean-square of all Z scores of the bond lengths (or angles).

Mol	Type	Chain	Res	Link	Bond lengths			Bond angles		
					Counts	RMSZ	$\# Z  > 2$	Counts	RMSZ	$\# Z  > 2$
5	MPD	A	1049	-	7,7,7	0.43	0	9,10,10	0.90	0

Mol	Type	Chain	Res	Link	Bond lengths			Bond angles		
					Counts	RMSZ	# Z  > 2	Counts	RMSZ	# Z  > 2
2	NAG	A	1046	1	14,14,15	0.71	0	17,19,21	2.38	5 (29%)
3	MAN	A	1047	4	12,12,12	1.57	2 (16%)	17,17,17	2.62	6 (35%)

In the following table, the Chirals column lists the number of chiral outliers, the number of chiral centers analysed, the number of these observed in the model and the number defined in the Chemical Component Dictionary. Similar counts are reported in the Torsion and Rings columns. '-' means no outliers of that kind were identified.

Mol	Type	Chain	Res	Link	Chirals	Torsions	Rings
5	MPD	A	1049	-	-	1/5/5/5	-
2	NAG	A	1046	1	1/1/5/7	3/6/23/26	0/1/1/1
3	MAN	A	1047	4	-	0/2/22/22	0/1/1/1

All (2) bond length outliers are listed below:

Mol	Chain	Res	Type	Atoms	Z	Observed(Å)	Ideal(Å)
3	A	1047	MAN	C3-C2	-3.52	1.43	1.52
3	A	1047	MAN	O5-C5	-2.72	1.37	1.44

All (11) bond angle outliers are listed below:

Mol	Chain	Res	Type	Atoms	Z	Observed(°)	Ideal(°)
3	A	1047	MAN	C1-C2-C3	5.42	121.56	110.31
2	A	1046	NAG	O5-C1-C2	-5.35	102.83	111.29
3	A	1047	MAN	O2-C2-C3	4.99	121.89	110.35
3	A	1047	MAN	O3-C3-C2	4.77	121.37	110.35
2	A	1046	NAG	O5-C5-C6	4.63	114.46	107.20
2	A	1046	NAG	C2-N2-C7	-4.21	116.90	122.90
3	A	1047	MAN	O1-C1-O5	3.57	121.09	110.38
2	A	1046	NAG	O5-C5-C4	3.23	118.68	110.83
2	A	1046	NAG	C1-O5-C5	2.94	116.18	112.19
3	A	1047	MAN	C6-C5-C4	2.48	118.82	113.00
3	A	1047	MAN	C4-C3-C2	2.40	115.00	110.82

All (1) chirality outliers are listed below:

Mol	Chain	Res	Type	Atom
2	A	1046	NAG	C5

All (4) torsion outliers are listed below:

Mol	Chain	Res	Type	Atoms
5	A	1049	MPD	C2-C3-C4-C5
2	A	1046	NAG	C8-C7-N2-C2
2	A	1046	NAG	O7-C7-N2-C2
2	A	1046	NAG	C4-C5-C6-O6

There are no ring outliers.

1 monomer is involved in 1 short contact:

Mol	Chain	Res	Type	Clashes	Symm-Clashes
3	A	1047	MAN	1	0

## 5.7 Other polymers [i](#)

There are no such residues in this entry.

## 5.8 Polymer linkage issues [i](#)

There are no chain breaks in this entry.

## 6 Fit of model and data [i](#)

### 6.1 Protein, DNA and RNA chains [i](#)

In the following table, the column labelled ‘#RSRZ > 2’ contains the number (and percentage) of RSRZ outliers, followed by percent RSRZ outliers for the chain as percentile scores relative to all X-ray entries and entries of similar resolution. The OWAB column contains the minimum, median, 95<sup>th</sup> percentile and maximum values of the occupancy-weighted average B-factor per residue. The column labelled ‘Q < 0.9’ lists the number of (and percentage) of residues with an average occupancy less than 0.9.

Mol	Chain	Analysed	<RSRZ>	#RSRZ>2	OWAB(Å <sup>2</sup> )	Q<0.9
1	A	1015/1045 (97%)	-0.29	23 (2%) 60 59	11, 17, 28, 48	0

All (23) RSRZ outliers are listed below:

Mol	Chain	Res	Type	RSRZ
1	A	993	HIS	5.2
1	A	702	ASP	4.6
1	A	721	GLY	4.1
1	A	701	GLN	4.0
1	A	78	HIS	3.6
1	A	638[A]	ASP	3.2
1	A	600	HIS	3.2
1	A	991	GLU	3.2
1	A	583	LEU	3.0
1	A	1024	ASP	3.0
1	A	1045	SER	2.9
1	A	602	THR	2.8
1	A	534	SER	2.8
1	A	451	MET	2.7
1	A	720	HIS	2.6
1	A	537	GLU	2.5
1	A	547[A]	GLU	2.5
1	A	396	GLU	2.5
1	A	603	LEU	2.4
1	A	992	GLU	2.4
1	A	1044	SER	2.1
1	A	618	ILE	2.1
1	A	541	THR	2.0

## 6.2 Non-standard residues in protein, DNA, RNA chains [i](#)

There are no non-standard protein/DNA/RNA residues in this entry.

## 6.3 Carbohydrates [i](#)

There are no monosaccharides in this entry.

## 6.4 Ligands [i](#)

In the following table, the Atoms column lists the number of modelled atoms in the group and the number defined in the chemical component dictionary. The B-factors column lists the minimum, median, 95<sup>th</sup> percentile and maximum values of B factors of atoms in the group. The column labelled 'Q< 0.9' lists the number of atoms with occupancy less than 0.9.

Mol	Type	Chain	Res	Atoms	RSCC	RSR	B-factors( $\text{\AA}^2$ )	Q<0.9
2	NAG	A	1046	14/15	0.68	0.39	48,50,54,55	0
5	MPD	A	1049	8/8	0.81	0.23	27,37,39,39	0
3	MAN	A	1047	12/12	0.90	0.19	18,23,25,28	0
4	ZN	A	1048	1/1	1.00	0.03	18,18,18,18	0

## 6.5 Other polymers [i](#)

There are no such residues in this entry.