



## Full wwPDB EM Validation Report ⓘ

Nov 16, 2022 – 05:59 PM JST

PDB ID : 7BSV  
EMDB ID : EMD-30168  
Title : Cryo-EM structure of a human ATP11C-CDC50A flippase in PtdSer-occluded E2-AIF state  
Authors : Abe, K.; Nishizawa, T.; Nakanishi, H.  
Deposited on : 2020-03-31  
Resolution : 3.00 Å(reported)

This is a Full wwPDB EM Validation Report for a publicly released PDB entry.

We welcome your comments at [validation@mail.wwpdb.org](mailto:validation@mail.wwpdb.org)

A user guide is available at

<https://www.wwpdb.org/validation/2017/EMValidationReportHelp>

with specific help available everywhere you see the ⓘ symbol.

The types of validation reports are described at

<http://www.wwpdb.org/validation/2017/FAQs#types>.

---

The following versions of software and data (see [references ⓘ](#)) were used in the production of this report:

EMDB validation analysis : 0.0.1.dev43  
Mogul : 1.8.5 (274361), CSD as541be (2020)  
MolProbity : 4.02b-467  
buster-report : 1.1.7 (2018)  
Percentile statistics : 20191225.v01 (using entries in the PDB archive December 25th 2019)  
MapQ : 1.9.9  
Ideal geometry (proteins) : Engh & Huber (2001)  
Ideal geometry (DNA, RNA) : Parkinson et al. (1996)  
Validation Pipeline (wwPDB-VP) : 2.31.2

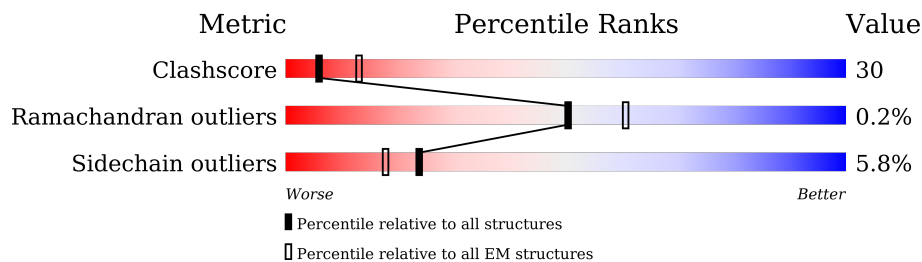
# 1 Overall quality at a glance

The following experimental techniques were used to determine the structure:

*ELECTRON MICROSCOPY*

The reported resolution of this entry is 3.00 Å.

Percentile scores (ranging between 0-100) for global validation metrics of the entry are shown in the following graphic. The table shows the number of entries on which the scores are based.



Metric	Whole archive (#Entries)	EM structures (#Entries)
Clashscore	158937	4297
Ramachandran outliers	154571	4023
Sidechain outliers	154315	3826

The table below summarises the geometric issues observed across the polymeric chains and their fit to the map. The red, orange, yellow and green segments of the bar indicate the fraction of residues that contain outliers for  $\geq 3$ , 2, 1 and 0 types of geometric quality criteria respectively. A grey segment represents the fraction of residues that are not modelled. The numeric value for each fraction is indicated below the corresponding segment, with a dot representing fractions  $\leq 5\%$ . The upper red bar (where present) indicates the fraction of residues that have poor fit to the EM map (all-atom inclusion  $< 40\%$ ). The numeric value is given above the bar.

Mol	Chain	Length	Quality of chain
1	A	1084	36% 36% 25%
2	C	361	46% 40% 10%
3	B	2	50% 50%

The following table lists non-polymeric compounds, carbohydrate monomers and non-standard residues in protein, DNA, RNA chains that are outliers for geometric or electron-density-fit criteria:

Mol	Type	Chain	Res	Chirality	Geometry	Clashes	Electron density
4	ALF	A	1101	-	-	X	-
7	NAG	C	402	-	-	X	-

## 2 Entry composition [i](#)

There are 8 unique types of molecules in this entry. The entry contains 9421 atoms, of which 82 are hydrogens and 0 are deuteriums.

In the tables below, the AltConf column contains the number of residues with at least one atom in alternate conformation and the Trace column contains the number of residues modelled with at most 2 atoms.

- Molecule 1 is a protein called ATP11C.

Mol	Chain	Residues	Atoms					AltConf	Trace
			Total	C	N	O	S		
1	A	815	6596	4305	1060	1198	33	0	0

- Molecule 2 is a protein called CDC50A.

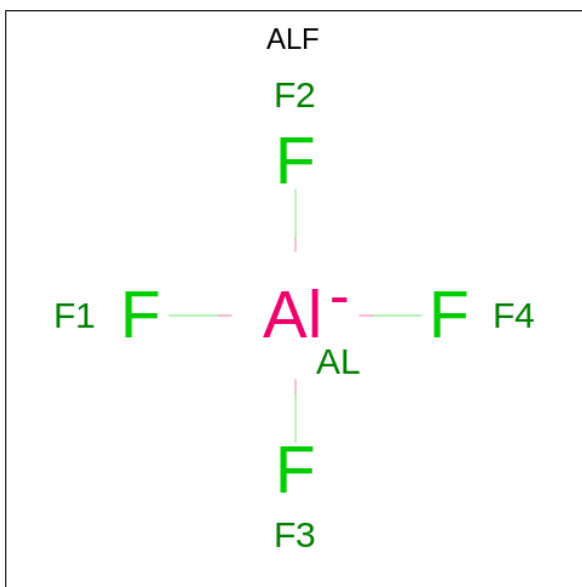
Mol	Chain	Residues	Atoms					AltConf	Trace
			Total	C	N	O	S		
2	C	324	2613	1696	439	466	12	0	0

- Molecule 3 is an oligosaccharide called alpha-D-mannopyranose-(1-4)-2-acetamido-2-deoxy-beta-D-glucopyranose.



Mol	Chain	Residues	Atoms				AltConf	Trace
			Total	C	N	O		
3	B	2	25	14	1	10	0	0

- Molecule 4 is TETRAFLUOROALUMINATE ION (three-letter code: ALF) (formula:  $\text{AlF}_4$ ) (labeled as "Ligand of Interest" by depositor).

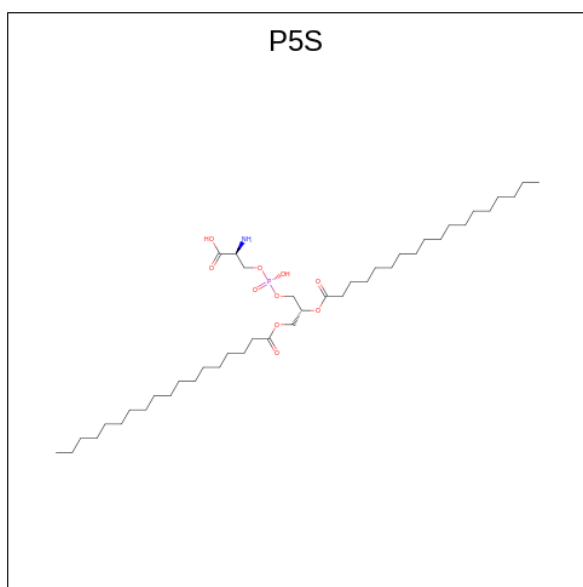


Mol	Chain	Residues	Atoms			AltConf
			Total	Al	F	
4	A	1	5	1	4	0

- Molecule 5 is MAGNESIUM ION (three-letter code: MG) (formula: Mg) (labeled as "Ligand of Interest" by depositor).

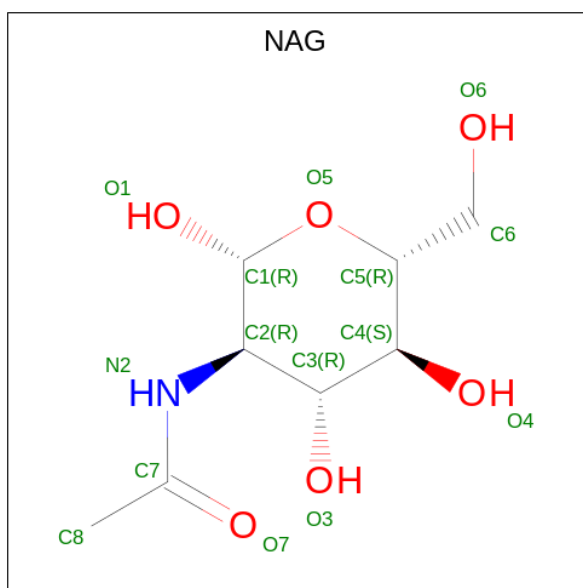
Mol	Chain	Residues	Atoms		AltConf
			Total	Mg	
5	A	1	1	1	0

- Molecule 6 is O-[(R)-{[(2R)-2,3-bis(octadecanoyloxy)propyl]oxy}(hydroxy)phosphoryl]-L-serine (three-letter code: P5S) (formula: C<sub>42</sub>H<sub>82</sub>NO<sub>10</sub>P) (labeled as "Ligand of Interest" by depositor).



Mol	Chain	Residues	Atoms					AltConf	
			Total	C	H	N	O		P
6	A	1	136	42	82	1	10	1	0

- Molecule 7 is 2-acetamido-2-deoxy-beta-D-glucopyranose (three-letter code: NAG) (formula:  $C_8H_{15}NO_6$ ).



Mol	Chain	Residues	Atoms				AltConf
			Total	C	N	O	
7	C	1	41	24	3	14	0
7	C	1	41	24	3	14	0

*Continued on next page...*

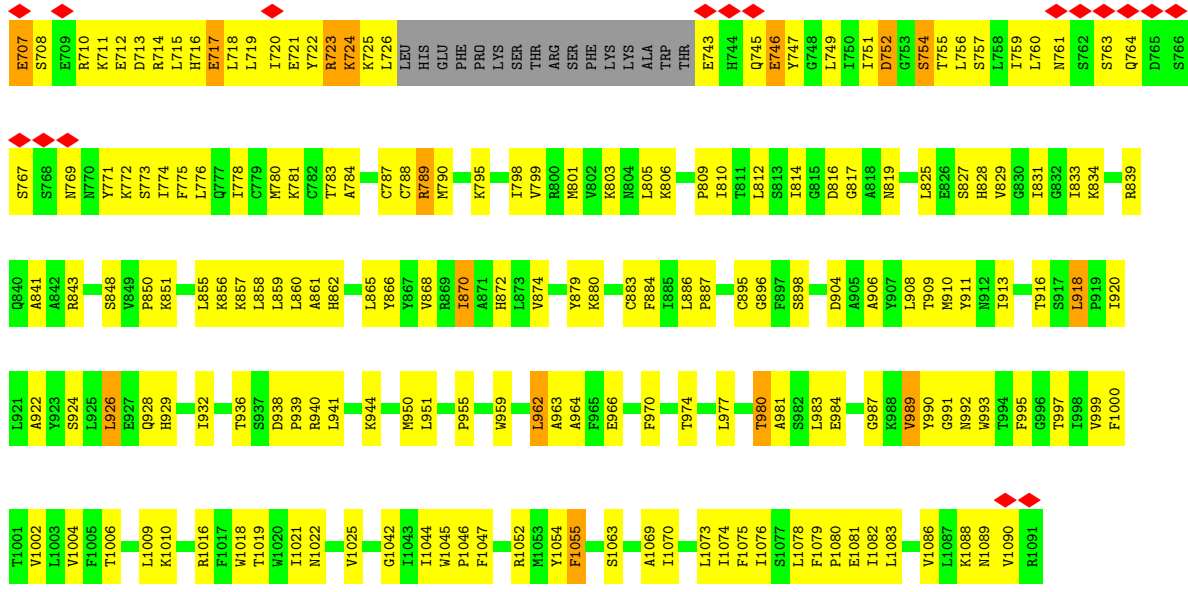
*Continued from previous page...*

Mol	Chain	Residues	Atoms				AltConf
			Total	C	N	O	
7	C	1	41	24	3	14	0

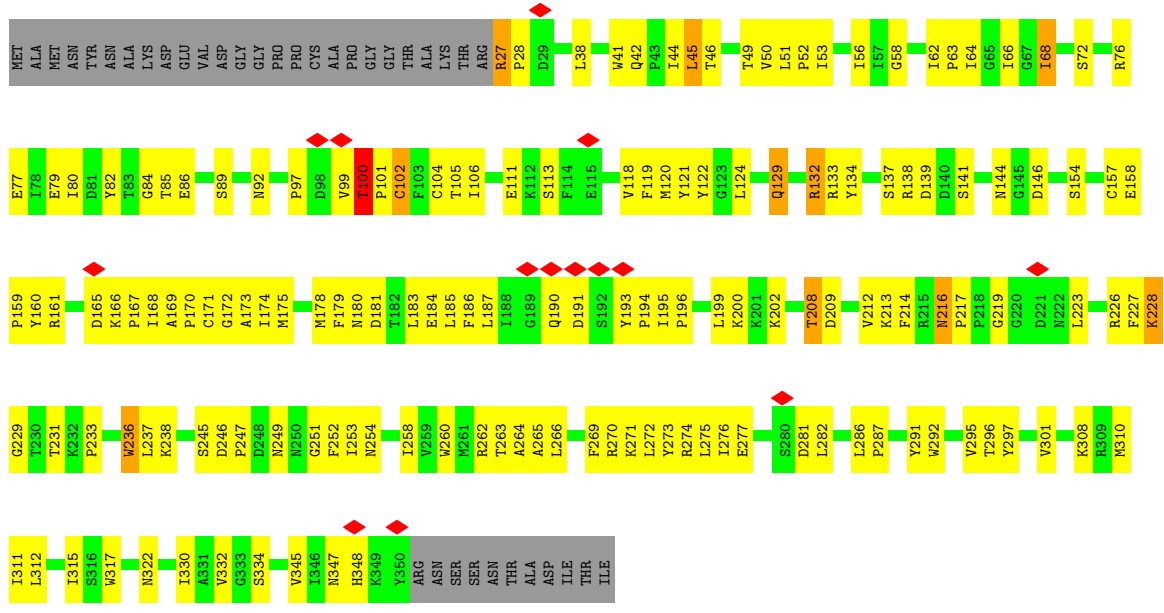
- Molecule 8 is water.

Mol	Chain	Residues	Atoms		AltConf
8	A	4	Total	O	0
			4	4	





• Molecule 2: CDC50A



• Molecule 3: alpha-D-mannopyranose-(1-4)-2-acetamido-2-deoxy-beta-D-glucopyranose





## 4 Experimental information

Property	Value	Source
EM reconstruction method	SINGLE PARTICLE	Depositor
Imposed symmetry	POINT, Not provided	
Number of particles used	500000	Depositor
Resolution determination method	FSC 0.143 CUT-OFF	Depositor
CTF correction method	PHASE FLIPPING AND AMPLITUDE CORRECTION	Depositor
Microscope	TFS KRIOS	Depositor
Voltage (kV)	300	Depositor
Electron dose ( $e^-/\text{\AA}^2$ )	64	Depositor
Minimum defocus (nm)	Not provided	
Maximum defocus (nm)	Not provided	
Magnification	Not provided	
Image detector	GATAN K3 (6k x 4k)	Depositor
Maximum map value	0.137	Depositor
Minimum map value	-0.093	Depositor
Average map value	0.000	Depositor
Map value standard deviation	0.004	Depositor
Recommended contour level	0.0158	Depositor
Map size (Å)	215.8, 215.8, 215.8	wwPDB
Map dimensions	260, 260, 260	wwPDB
Map angles (°)	90.0, 90.0, 90.0	wwPDB
Pixel spacing (Å)	0.83, 0.83, 0.83	Depositor

## 5 Model quality [i](#)

### 5.1 Standard geometry [i](#)

Bond lengths and bond angles in the following residue types are not validated in this section: MG, NAG, P5S, MAN, ALF

The Z score for a bond length (or angle) is the number of standard deviations the observed value is removed from the expected value. A bond length (or angle) with  $|Z| > 5$  is considered an outlier worth inspection. RMSZ is the root-mean-square of all Z scores of the bond lengths (or angles).

Mol	Chain	Bond lengths		Bond angles	
		RMSZ	# Z  >5	RMSZ	# Z  >5
1	A	0.27	0/6751	0.41	0/9152
2	C	0.28	0/2690	0.43	0/3659
All	All	0.27	0/9441	0.41	0/12811

Chiral center outliers are detected by calculating the chiral volume of a chiral center and verifying if the center is modelled as a planar moiety or with the opposite hand. A planarity outlier is detected by checking planarity of atoms in a peptide group, atoms in a mainchain group or atoms of a sidechain that are expected to be planar.

Mol	Chain	#Chirality outliers	#Planarity outliers
2	C	0	1

There are no bond length outliers.

There are no bond angle outliers.

There are no chirality outliers.

All (1) planarity outliers are listed below:

Mol	Chain	Res	Type	Group
2	C	100	THR	Peptide

### 5.2 Too-close contacts [i](#)

In the following table, the Non-H and H(model) columns list the number of non-hydrogen atoms and hydrogen atoms in the chain respectively. The H(added) column lists the number of hydrogen atoms added and optimized by MolProbity. The Clashes column lists the number of clashes within the asymmetric unit, whereas Symm-Clashes lists symmetry-related clashes.

Mol	Chain	Non-H	H(model)	H(added)	Clashes	Symm-Clashes
1	A	6596	0	6624	409	0
2	C	2613	0	2583	173	0
3	B	25	0	22	2	0
4	A	5	0	0	3	0
5	A	1	0	0	0	0
6	A	54	82	80	5	0
7	C	41	0	37	13	0
8	A	4	0	0	1	0
All	All	9339	82	9346	552	0

The all-atom clashscore is defined as the number of clashes found per 1000 atoms (including hydrogen atoms). The all-atom clashscore for this structure is 30.

All (552) close contacts within the same asymmetric unit are listed below, sorted by their clash magnitude.

Atom-1	Atom-2	Interatomic distance (Å)	Clash overlap (Å)
2:C:105:THR:HG21	7:C:402:NAG:C6	1.60	1.28
2:C:105:THR:CG2	7:C:402:NAG:H62	1.80	1.12
2:C:105:THR:HG21	7:C:402:NAG:H62	1.21	1.10
1:A:251:LEU:HD21	1:A:254:THR:HB	1.30	1.06
2:C:105:THR:HG21	7:C:402:NAG:H61	1.41	1.01
7:C:401:NAG:O4	3:B:1:NAG:C1	2.13	0.97
1:A:131:ALA:H	1:A:202:ILE:HG21	1.30	0.95
1:A:206:ARG:HB2	1:A:228:TYR:HB2	1.48	0.94
1:A:719:LEU:HD23	1:A:774:ILE:HG23	1.50	0.93
2:C:158:GLU:HG3	2:C:159:PRO:HA	1.51	0.92
1:A:980:THR:HB	2:C:322:ASN:HB2	1.49	0.91
2:C:104:CYS:HB2	2:C:295:VAL:HG22	1.53	0.90
1:A:981:ALA:HB2	2:C:270:ARG:HD2	1.54	0.90
1:A:193:THR:HG23	1:A:196:LEU:HD22	1.55	0.88
1:A:705:ILE:HD13	1:A:711:LYS:HB3	1.56	0.88
2:C:301:VAL:HG21	2:C:308:LYS:HG3	1.56	0.88
1:A:229:SER:HB3	1:A:233:GLU:HB2	1.54	0.87
1:A:188:TYR:O	1:A:243:ASN:ND2	2.08	0.86
1:A:85:PRO:HD3	1:A:349:VAL:HG12	1.58	0.85
1:A:865:LEU:HD11	1:A:932:ILE:HG22	1.57	0.84
1:A:776:LEU:HD13	1:A:801:MET:HE3	1.59	0.84
2:C:216:ASN:ND2	2:C:251:GLY:O	2.10	0.84
1:A:43:ASN:ND2	1:A:138:SER:O	2.10	0.84
2:C:180:ASN:HD22	7:C:401:NAG:H83	1.43	0.83
1:A:131:ALA:HA	1:A:202:ILE:HD13	1.61	0.82
1:A:992:ASN:HA	2:C:265:ALA:HB2	1.62	0.82

*Continued on next page...*

*Continued from previous page...*

Atom-1	Atom-2	Interatomic distance (Å)	Clash overlap (Å)
1:A:763:SER:OG	1:A:772:LYS:NZ	2.13	0.82
1:A:865:LEU:HD11	1:A:932:ILE:CG2	2.11	0.80
1:A:299:LEU:HB2	1:A:354:ILE:HD11	1.63	0.80
1:A:850:PRO:O	1:A:851:LYS:HG2	1.82	0.80
1:A:366:GLN:HG3	1:A:924:SER:HB3	1.64	0.80
1:A:233:GLU:HG3	1:A:235:VAL:HG23	1.65	0.79
2:C:80:ILE:HD13	2:C:310:MET:HE2	1.65	0.79
1:A:321:GLU:OE2	1:A:332:ARG:NE	2.14	0.79
1:A:747:TYR:O	1:A:783:THR:HG22	1.83	0.79
1:A:839:ARG:O	1:A:843:ARG:HG2	1.82	0.78
1:A:328:THR:HA	2:C:159:PRO:HG3	1.66	0.78
2:C:97:PRO:HB2	2:C:100:THR:CG2	2.13	0.78
1:A:780:MET:SD	1:A:806:LYS:NZ	2.54	0.78
1:A:178:LEU:HD22	1:A:218:LEU:HD11	1.67	0.77
1:A:79:GLN:NE2	1:A:91:SER:OG	2.17	0.77
1:A:698:LEU:HD22	1:A:718:LEU:HD22	1.67	0.77
1:A:769:ASN:HB2	1:A:774:ILE:HD11	1.67	0.77
1:A:677:LYS:HE3	1:A:678:MET:H	1.49	0.76
1:A:686:TYR:O	1:A:689:ARG:NH2	2.19	0.76
1:A:175:THR:OG1	1:A:179:ASP:OD2	2.04	0.75
1:A:705:ILE:HD13	1:A:711:LYS:CB	2.16	0.75
2:C:97:PRO:HB2	2:C:100:THR:HB	1.66	0.75
2:C:137:SER:OG	2:C:173:ALA:N	2.16	0.75
1:A:212:GLU:OE1	1:A:215:GLN:NE2	2.19	0.74
2:C:237:LEU:HG	7:C:401:NAG:H82	1.70	0.73
1:A:408:THR:HG22	1:A:409:ASP:H	1.52	0.73
1:A:974:THR:HG21	1:A:999:VAL:HG22	1.69	0.73
2:C:84:GLY:O	2:C:85:THR:OG1	2.05	0.73
2:C:179:PHE:CZ	2:C:181:ASP:HB2	2.24	0.73
1:A:160:ILE:HG13	1:A:262:VAL:HG21	1.70	0.72
2:C:105:THR:CB	7:C:402:NAG:H62	2.19	0.72
1:A:904:ASP:OD1	1:A:1052:ARG:NE	2.19	0.72
1:A:1055:PHE:HB2	2:C:208:THR:HG21	1.71	0.71
1:A:233:GLU:CG	1:A:235:VAL:HG23	2.21	0.71
2:C:249:ASN:O	2:C:254:ASN:ND2	2.23	0.71
2:C:80:ILE:HD13	2:C:310:MET:CE	2.21	0.70
2:C:217:PRO:HB2	2:C:226:ARG:HB3	1.73	0.70
1:A:398:GLU:HB3	1:A:870:ILE:HG21	1.72	0.70
1:A:705:ILE:CG2	1:A:711:LYS:HB3	2.21	0.70
2:C:214:PHE:HB3	2:C:252:PHE:O	1.92	0.70
2:C:62:ILE:O	2:C:66:ILE:HG13	1.91	0.70

*Continued on next page...*

*Continued from previous page...*

Atom-1	Atom-2	Interatomic distance (Å)	Clash overlap (Å)
1:A:45:ILE:HD11	1:A:120:VAL:HG11	1.73	0.70
1:A:1054:TYR:OH	2:C:212:VAL:HG11	1.91	0.70
2:C:99:VAL:O	2:C:101:PRO:HD2	1.91	0.70
1:A:983:LEU:O	1:A:1063:SER:HB2	1.92	0.70
2:C:200:LYS:NZ	2:C:202:LYS:O	2.25	0.69
2:C:97:PRO:HB2	2:C:100:THR:CB	2.23	0.69
1:A:19:THR:N	1:A:211:CYS:O	2.25	0.69
2:C:64:ILE:O	2:C:68:ILE:HG23	1.93	0.69
1:A:165:CYS:HA	1:A:197:CYS:SG	2.33	0.69
1:A:970:PHE:O	1:A:974:THR:HG22	1.91	0.69
2:C:281:ASP:OD1	2:C:282:LEU:N	2.26	0.69
1:A:212:GLU:OE2	1:A:222:VAL:N	2.24	0.69
1:A:1055:PHE:CB	2:C:208:THR:HG21	2.23	0.69
1:A:228:TYR:HA	1:A:233:GLU:HB3	1.76	0.68
2:C:76:ARG:NE	2:C:113:SER:O	2.27	0.68
1:A:85:PRO:CD	1:A:349:VAL:HG12	2.24	0.68
1:A:209:ILE:HG22	1:A:211:CYS:SG	2.34	0.67
1:A:310:LYS:O	1:A:314:GLN:HG3	1.94	0.67
1:A:129:GLU:HB2	1:A:134:VAL:HG21	1.76	0.67
1:A:54:ASN:HD21	1:A:58:LYS:HD3	1.59	0.67
1:A:717:GLU:O	1:A:722:TYR:HB2	1.94	0.67
1:A:173:VAL:CG1	1:A:249:ALA:HB1	2.25	0.67
1:A:660:ILE:HG21	1:A:690:LEU:HD13	1.77	0.67
1:A:206:ARG:CB	1:A:228:TYR:HB2	2.23	0.66
1:A:987:GLY:O	2:C:272:LEU:HD22	1.95	0.66
1:A:922:ALA:O	1:A:926:LEU:HD12	1.95	0.66
1:A:125:VAL:HG21	1:A:141:ILE:HD11	1.77	0.65
2:C:51:LEU:HD12	2:C:52:PRO:HD3	1.77	0.65
2:C:169:ALA:HB3	2:C:170:PRO:CD	2.25	0.65
1:A:128:ILE:HG22	1:A:202:ILE:HG12	1.78	0.65
1:A:163:SER:HB2	1:A:193:THR:O	1.97	0.65
1:A:191:ARG:O	1:A:194:ILE:HG12	1.96	0.65
2:C:139:ASP:OD2	2:C:154:SER:N	2.28	0.65
1:A:689:ARG:HA	1:A:689:ARG:NH1	2.12	0.65
1:A:698:LEU:CD2	1:A:718:LEU:HD22	2.28	0.64
1:A:856:LYS:O	1:A:860:LEU:HB2	1.97	0.64
1:A:345:LEU:O	1:A:349:VAL:HG23	1.97	0.64
1:A:756:LEU:HD11	1:A:798:ILE:HD11	1.80	0.64
1:A:714:ARG:NH2	1:A:718:LEU:HD21	2.11	0.64
1:A:805:LEU:O	1:A:805:LEU:HD12	1.97	0.64
1:A:906:ALA:O	1:A:910:MET:HG3	1.98	0.64

*Continued on next page...*

*Continued from previous page...*

Atom-1	Atom-2	Interatomic distance (Å)	Clash overlap (Å)
1:A:1044:ILE:HG21	2:C:144:ASN:HD21	1.63	0.64
1:A:974:THR:HG21	1:A:999:VAL:CG2	2.28	0.64
1:A:123:SER:O	1:A:137:GLU:HA	1.98	0.64
1:A:719:LEU:CD2	1:A:774:ILE:HG23	2.26	0.64
1:A:981:ALA:CB	2:C:270:ARG:HD2	2.27	0.63
2:C:199:LEU:HD23	2:C:276:ILE:HG12	1.81	0.63
2:C:209:ASP:OD2	2:C:262:ARG:NH1	2.31	0.63
2:C:104:CYS:HB2	2:C:295:VAL:CG2	2.27	0.63
2:C:105:THR:OG1	7:C:402:NAG:H62	1.98	0.63
1:A:981:ALA:HB2	2:C:270:ARG:CD	2.26	0.62
2:C:105:THR:CG2	7:C:402:NAG:C6	2.48	0.62
1:A:719:LEU:HD12	1:A:724:LYS:HG2	1.80	0.62
2:C:119:PHE:HE1	2:C:315:ILE:HG12	1.65	0.62
1:A:229:SER:CB	1:A:233:GLU:HB2	2.27	0.62
1:A:993:TRP:O	1:A:997:THR:OG1	2.11	0.62
2:C:100:THR:O	2:C:100:THR:OG1	2.18	0.62
1:A:1045:TRP:HB2	1:A:1046:PRO:HA	1.82	0.62
1:A:325:ASN:HB3	2:C:134:TYR:HD1	1.63	0.62
1:A:705:ILE:HG21	1:A:711:LYS:HB3	1.80	0.62
1:A:992:ASN:CA	2:C:265:ALA:HB2	2.29	0.62
1:A:161:LEU:HD13	1:A:245:LEU:HD11	1.82	0.61
1:A:409:ASP:O	1:A:413:THR:HB	2.00	0.61
1:A:1002:VAL:HG13	1:A:1074:ILE:HG22	1.82	0.61
1:A:284:VAL:O	1:A:288:ILE:HG13	2.00	0.61
1:A:992:ASN:OD1	2:C:263:THR:OG1	2.19	0.61
1:A:861:ALA:HB2	1:A:936:THR:HG23	1.82	0.60
2:C:51:LEU:HD12	2:C:52:PRO:CD	2.30	0.60
1:A:26:ASN:ND2	1:A:144:GLY:O	2.34	0.60
1:A:1016:ARG:O	2:C:42:GLN:HA	2.01	0.60
2:C:209:ASP:HA	2:C:213:LYS:HB3	1.83	0.60
1:A:361:VAL:HG12	1:A:365:MET:HE3	1.84	0.60
1:A:47:SER:HB3	1:A:117:ASP:OD1	2.01	0.60
1:A:774:ILE:O	1:A:778:ILE:HG13	2.01	0.60
2:C:138:ARG:HD2	2:C:174:ILE:HD12	1.83	0.60
1:A:1044:ILE:HD13	2:C:144:ASN:ND2	2.17	0.60
1:A:189:ALA:HB3	1:A:194:ILE:HG22	1.82	0.60
1:A:365:MET:CE	6:A:1103:P5S:H25	2.32	0.60
2:C:51:LEU:HD12	2:C:52:PRO:N	2.17	0.60
2:C:236:TRP:O	2:C:237:LEU:HD23	2.01	0.59
1:A:751:ILE:HG22	1:A:752:ASP:H	1.68	0.59
2:C:129:GLN:HG2	2:C:263:THR:HA	1.84	0.59

*Continued on next page...*

*Continued from previous page...*

Atom-1	Atom-2	Interatomic distance (Å)	Clash overlap (Å)
1:A:795:LYS:NZ	4:A:1101:ALF:F1	2.24	0.59
2:C:287:PRO:O	2:C:291:TYR:OH	2.10	0.59
1:A:817:GLY:O	1:A:841:ALA:HB2	2.03	0.59
2:C:97:PRO:CB	2:C:100:THR:HB	2.32	0.59
2:C:119:PHE:CE1	2:C:315:ILE:HG12	2.38	0.59
1:A:26:ASN:OD1	1:A:142:LYS:HE3	2.03	0.58
1:A:51:THR:HB	1:A:54:ASN:OD1	2.02	0.58
1:A:870:ILE:O	1:A:874:VAL:HG23	2.04	0.58
1:A:83:ASP:O	1:A:349:VAL:HG11	2.04	0.58
1:A:714:ARG:HH21	1:A:718:LEU:HD21	1.66	0.58
1:A:135:ARG:HG3	1:A:135:ARG:O	2.02	0.58
2:C:157:CYS:HB2	2:C:172:GLY:HA2	1.85	0.58
1:A:719:LEU:CD1	1:A:724:LYS:HG2	2.33	0.58
1:A:719:LEU:O	1:A:724:LYS:HG3	2.03	0.58
1:A:149:VAL:HG21	1:A:155:PHE:HD1	1.69	0.58
1:A:365:MET:HG2	6:A:1103:P5S:H27	1.86	0.58
1:A:159:LEU:O	1:A:244:LEU:HD12	2.04	0.58
1:A:698:LEU:O	1:A:749:LEU:HD12	2.03	0.58
1:A:163:SER:OG	1:A:164:SER:N	2.37	0.57
1:A:377:ASP:OD2	1:A:857:LYS:NZ	2.35	0.57
1:A:803:LYS:HE3	1:A:828:HIS:CE1	2.39	0.57
1:A:941:LEU:HD23	1:A:944:LYS:HE2	1.86	0.57
1:A:1018:TRP:HB2	2:C:41:TRP:HB3	1.86	0.57
2:C:122:TYR:CZ	2:C:271:LYS:HB2	2.39	0.57
2:C:253:ILE:HA	2:C:258:ILE:HD11	1.85	0.57
1:A:886:LEU:HD22	1:A:964:ALA:HA	1.86	0.57
2:C:58:GLY:O	2:C:62:ILE:HG13	2.05	0.57
1:A:225:ILE:O	1:A:236:ALA:HA	2.04	0.57
1:A:918:LEU:HD23	6:A:1103:P5S:H55	1.86	0.57
1:A:190:VAL:O	1:A:194:ILE:HG23	2.05	0.57
1:A:1083:LEU:O	1:A:1086:VAL:HG22	2.05	0.57
1:A:399:GLU:OE2	1:A:810:ILE:HD13	2.05	0.57
1:A:705:ILE:HG23	1:A:711:LYS:HB3	1.87	0.57
2:C:157:CYS:HB2	2:C:172:GLY:CA	2.35	0.57
2:C:199:LEU:HB3	2:C:274:ARG:HB3	1.87	0.57
1:A:411:THR:HB	4:A:1101:ALF:F2	1.95	0.56
1:A:75:ILE:O	1:A:79:GLN:HG3	2.05	0.56
1:A:215:GLN:O	1:A:269:LYS:HG2	2.06	0.56
1:A:962:LEU:O	1:A:966:GLU:HG3	2.06	0.56
1:A:387:GLU:HG2	1:A:388:GLY:H	1.70	0.56
1:A:1000:PHE:O	1:A:1004:VAL:HG23	2.06	0.56

*Continued on next page...*

*Continued from previous page...*

Atom-1	Atom-2	Interatomic distance (Å)	Clash overlap (Å)
1:A:335:LEU:HD23	1:A:337:VAL:HG12	1.87	0.56
1:A:1089:ASN:OD1	2:C:46:THR:HA	2.06	0.56
1:A:814:ILE:HA	1:A:831:ILE:O	2.06	0.56
2:C:187:LEU:O	2:C:195:ILE:HG12	2.06	0.56
1:A:61:PHE:O	1:A:65:ARG:HB2	2.06	0.56
1:A:200:GLU:OE1	1:A:200:GLU:HA	2.06	0.56
1:A:795:LYS:O	1:A:799:VAL:HG23	2.06	0.56
1:A:216:PRO:HB3	1:A:273:ASN:OD1	2.07	0.55
1:A:311:TYR:OH	1:A:343:ASP:OD2	2.13	0.55
2:C:45:LEU:HD12	2:C:45:LEU:O	2.07	0.55
1:A:105:LYS:O	1:A:109:GLU:HG3	2.06	0.55
2:C:157:CYS:HB2	2:C:172:GLY:N	2.21	0.55
2:C:219:GLY:O	2:C:226:ARG:HG2	2.06	0.55
1:A:323:TRP:CE3	3:B:1:NAG:H82	2.42	0.55
1:A:359:MET:O	1:A:363:VAL:HG23	2.07	0.55
1:A:723:ARG:CZ	1:A:723:ARG:HB3	2.35	0.55
1:A:196:LEU:HD21	1:A:205:LEU:HD13	1.89	0.54
1:A:348:MET:O	1:A:352:ASN:HB3	2.07	0.54
2:C:79:GLU:HA	2:C:310:MET:O	2.07	0.54
1:A:95:LEU:O	1:A:99:ILE:HG12	2.08	0.54
1:A:361:VAL:HG12	1:A:365:MET:CE	2.37	0.54
1:A:866:TYR:O	1:A:870:ILE:HG22	2.07	0.54
1:A:321:GLU:HG2	1:A:326:GLN:HA	1.88	0.54
1:A:677:LYS:HD2	1:A:789:ARG:HG3	1.89	0.54
1:A:159:LEU:HD23	1:A:259:GLY:HA3	1.90	0.54
1:A:413:THR:HG23	1:A:833:ILE:CD1	2.38	0.54
1:A:685:CYS:SG	1:A:690:LEU:HB3	2.48	0.54
2:C:51:LEU:N	2:C:52:PRO:HD2	2.23	0.54
2:C:186:PHE:HB2	2:C:292:TRP:HB2	1.89	0.54
2:C:51:LEU:CD1	2:C:52:PRO:HD3	2.38	0.54
1:A:63:GLN:NE2	1:A:102:THR:HB	2.22	0.54
1:A:126:TYR:CD1	1:A:135:ARG:HB3	2.43	0.54
1:A:129:GLU:HB2	1:A:134:VAL:CG2	2.37	0.54
1:A:855:LEU:O	1:A:859:LEU:HG	2.07	0.54
1:A:220:LYS:O	1:A:269:LYS:NZ	2.38	0.53
1:A:886:LEU:CD2	1:A:964:ALA:HA	2.39	0.53
1:A:43:ASN:ND2	1:A:141:ILE:HB	2.23	0.53
1:A:981:ALA:HB2	2:C:270:ARG:HH11	1.74	0.53
1:A:42:ASP:O	1:A:44:ARG:N	2.41	0.53
1:A:868:VAL:HG11	1:A:929:HIS:HB2	1.91	0.53
1:A:29:VAL:HG12	1:A:228:TYR:HE2	1.72	0.53

*Continued on next page...*



*Continued from previous page...*

Atom-1	Atom-2	Interatomic distance (Å)	Clash overlap (Å)
1:A:327:LYS:HB3	1:A:331:GLU:HB2	1.90	0.53
1:A:977:LEU:HD13	1:A:1069:ALA:HB2	1.90	0.53
1:A:992:ASN:HB3	2:C:265:ALA:HA	1.89	0.53
1:A:980:THR:HB	2:C:322:ASN:CB	2.31	0.53
1:A:212:GLU:OE2	1:A:222:VAL:HG12	2.09	0.53
1:A:760:LEU:HD11	1:A:801:MET:SD	2.49	0.53
1:A:984:GLU:OE1	1:A:990:TYR:OH	2.23	0.53
2:C:265:ALA:O	2:C:266:LEU:HG	2.08	0.53
2:C:170:PRO:HD2	2:C:233:PRO:HD3	1.89	0.53
1:A:663:LEU:HG	1:A:668:LEU:HD12	1.91	0.52
2:C:80:ILE:CG2	2:C:106:ILE:HG21	2.39	0.52
1:A:705:ILE:O	1:A:705:ILE:HG22	2.09	0.52
1:A:165:CYS:HB3	1:A:256:LYS:HG3	1.92	0.52
1:A:928:GLN:N	1:A:928:GLN:OE1	2.43	0.52
1:A:805:LEU:HD11	1:A:809:PRO:HG2	1.91	0.52
1:A:859:LEU:HD12	1:A:860:LEU:HD13	1.92	0.51
1:A:229:SER:N	1:A:233:GLU:HB2	2.26	0.51
1:A:780:MET:CE	1:A:806:LYS:HD2	2.40	0.51
1:A:857:LYS:O	1:A:857:LYS:HG3	2.10	0.51
1:A:723:ARG:HD2	1:A:781:LYS:HB2	1.92	0.51
1:A:174:THR:HG23	1:A:252:LYS:HD3	1.92	0.51
1:A:25:GLY:O	1:A:26:ASN:HB2	2.10	0.51
1:A:165:CYS:SG	1:A:166:THR:N	2.84	0.51
1:A:398:GLU:CB	1:A:870:ILE:HG21	2.39	0.51
1:A:689:ARG:HA	1:A:689:ARG:CZ	2.40	0.51
1:A:701:THR:HA	1:A:752:ASP:HB2	1.92	0.51
2:C:191:ASP:OD1	2:C:193:TYR:HB3	2.09	0.51
1:A:955:PRO:O	1:A:959:TRP:HD1	1.93	0.51
2:C:137:SER:HG	2:C:173:ALA:H	1.54	0.51
2:C:186:PHE:HE1	2:C:196:PRO:HB3	1.76	0.51
1:A:198:THR:HG22	1:A:258:TYR:OH	2.11	0.51
2:C:273:TYR:CD2	2:C:274:ARG:HG2	2.46	0.51
2:C:158:GLU:HG3	2:C:159:PRO:CA	2.32	0.51
2:C:251:GLY:O	2:C:252:PHE:HB2	2.10	0.51
1:A:291:PHE:CE2	1:A:951:LEU:HD22	2.46	0.50
1:A:366:GLN:HG3	1:A:924:SER:CB	2.39	0.50
1:A:274:TYR:O	1:A:275:GLN:HB3	2.10	0.50
2:C:236:TRP:HD1	2:C:238:LYS:O	1.94	0.50
1:A:1009:LEU:HB2	1:A:1078:LEU:HD11	1.94	0.50
1:A:43:ASN:HD22	1:A:141:ILE:HB	1.76	0.50
1:A:334:THR:HG21	1:A:339:LYS:HG3	1.94	0.50

*Continued on next page...*

*Continued from previous page...*

Atom-1	Atom-2	Interatomic distance (Å)	Clash overlap (Å)
1:A:361:VAL:O	1:A:365:MET:HG3	2.12	0.50
1:A:776:LEU:HD21	1:A:805:LEU:HD23	1.93	0.50
2:C:118:VAL:HB	2:C:276:ILE:HB	1.94	0.50
1:A:149:VAL:CG1	1:A:153:GLU:HB2	2.41	0.50
1:A:235:VAL:CG1	1:A:237:ARG:HE	2.24	0.50
1:A:335:LEU:CD2	1:A:337:VAL:HG12	2.41	0.50
1:A:84:THR:HA	1:A:349:VAL:HG11	1.94	0.50
1:A:126:TYR:CE1	1:A:135:ARG:HB3	2.47	0.50
1:A:660:ILE:CG2	1:A:690:LEU:HD13	2.40	0.50
1:A:390:LEU:HB3	1:A:848:SER:HB3	1.94	0.49
1:A:819:ASN:H	1:A:819:ASN:ND2	2.11	0.49
1:A:122:LYS:HG3	1:A:139:GLU:OE2	2.11	0.49
1:A:812:LEU:HD12	1:A:829:VAL:HG13	1.94	0.49
1:A:235:VAL:HG13	1:A:237:ARG:HE	1.76	0.49
1:A:377:ASP:OD2	1:A:862:HIS:HE1	1.94	0.49
1:A:989:VAL:HG11	2:C:270:ARG:O	2.12	0.49
2:C:178:MET:HB2	2:C:236:TRP:CH2	2.48	0.49
1:A:328:THR:HG21	2:C:158:GLU:HG2	1.94	0.49
1:A:387:GLU:HG2	1:A:388:GLY:N	2.27	0.49
1:A:715:LEU:O	1:A:719:LEU:HB3	2.12	0.49
2:C:277:GLU:OE1	2:C:277:GLU:N	2.26	0.49
1:A:214:PRO:HB2	1:A:272:LEU:HD11	1.95	0.49
1:A:710:ARG:O	1:A:713:ASP:HB2	2.11	0.49
1:A:928:GLN:HG3	1:A:932:ILE:HG23	1.95	0.49
1:A:178:LEU:HD21	1:A:270:MET:HB2	1.94	0.49
1:A:182:SER:O	1:A:182:SER:OG	2.20	0.49
2:C:183:LEU:HD22	2:C:295:VAL:HG12	1.93	0.49
2:C:199:LEU:HD23	2:C:276:ILE:CG1	2.43	0.49
2:C:38:LEU:HD12	2:C:38:LEU:H	1.77	0.49
1:A:149:VAL:HG21	1:A:155:PHE:CD1	2.47	0.49
1:A:780:MET:SD	1:A:805:LEU:HD22	2.53	0.49
2:C:223:LEU:HD11	2:C:227:PHE:HE1	1.78	0.49
1:A:819:ASN:H	1:A:819:ASN:HD22	1.61	0.48
2:C:121:TYR:HB2	2:C:311:ILE:HB	1.93	0.48
1:A:42:ASP:OD1	1:A:42:ASP:N	2.45	0.48
1:A:45:ILE:CD1	1:A:120:VAL:HG11	2.43	0.48
1:A:151:ALA:HB2	1:A:254:THR:O	2.13	0.48
2:C:170:PRO:HG2	2:C:233:PRO:CG	2.43	0.48
2:C:120:MET:HE2	2:C:185:LEU:HG	1.94	0.48
1:A:872:HIS:HD2	1:A:950:MET:CE	2.26	0.48
1:A:1010:LYS:HD2	1:A:1081:GLU:HG3	1.94	0.48

*Continued on next page...*

*Continued from previous page...*

Atom-1	Atom-2	Interatomic distance (Å)	Clash overlap (Å)
1:A:695:THR:HA	1:A:746:GLU:O	2.13	0.48
1:A:860:LEU:HD21	1:A:939:PRO:HB3	1.94	0.48
2:C:186:PHE:CE1	2:C:196:PRO:HB3	2.48	0.48
2:C:200:LYS:HG2	2:C:275:LEU:O	2.14	0.48
1:A:308:THR:O	1:A:312:VAL:HG23	2.14	0.48
1:A:303:ALA:O	1:A:307:THR:OG1	2.20	0.48
1:A:674:THR:HG23	1:A:788:CYS:HA	1.95	0.48
1:A:29:VAL:HG12	1:A:228:TYR:CE2	2.49	0.48
1:A:291:PHE:HE2	1:A:951:LEU:HD22	1.78	0.48
1:A:757:SER:O	1:A:761:ASN:HB3	2.14	0.48
1:A:1042:GLY:N	1:A:1054:TYR:O	2.47	0.48
1:A:86:THR:HG21	1:A:908:LEU:HB2	1.96	0.47
1:A:275:GLN:O	1:A:275:GLN:HG2	2.14	0.47
1:A:714:ARG:O	1:A:718:LEU:HG	2.13	0.47
2:C:254:ASN:O	2:C:258:ILE:HG13	2.14	0.47
1:A:260:VAL:O	1:A:262:VAL:HG23	2.14	0.47
1:A:1019:THR:OG1	1:A:1022:ASN:ND2	2.43	0.47
2:C:46:THR:O	2:C:50:VAL:HG23	2.14	0.47
1:A:178:LEU:HD22	1:A:218:LEU:CD1	2.42	0.47
2:C:66:ILE:N	2:C:330:ILE:HD11	2.29	0.47
2:C:180:ASN:HD22	7:C:401:NAG:C8	2.23	0.47
1:A:162:LEU:HD22	1:A:260:VAL:HG23	1.96	0.47
1:A:705:ILE:HD12	1:A:755:THR:CG2	2.44	0.47
1:A:719:LEU:HB2	1:A:778:ILE:HG12	1.97	0.47
1:A:918:LEU:HD12	1:A:918:LEU:HA	1.75	0.47
1:A:167:THR:OG1	1:A:168:ASP:N	2.47	0.47
1:A:322:PRO:HD2	1:A:325:ASN:OD1	2.15	0.47
1:A:277:LYS:HD2	1:A:825:LEU:HD22	1.95	0.47
1:A:365:MET:HE2	6:A:1103:P5S:H25	1.96	0.47
1:A:764:GLN:NE2	1:A:764:GLN:HA	2.30	0.47
2:C:276:ILE:HG21	2:C:286:LEU:CD1	2.45	0.47
2:C:200:LYS:HZ2	2:C:275:LEU:HD12	1.80	0.47
1:A:323:TRP:CE3	1:A:323:TRP:O	2.68	0.47
1:A:284:VAL:CG2	1:A:398:GLU:HG3	2.44	0.47
1:A:408:THR:HG22	1:A:409:ASP:N	2.27	0.47
1:A:783:THR:HG23	1:A:784:ALA:H	1.79	0.47
1:A:134:VAL:HG12	1:A:135:ARG:N	2.30	0.46
1:A:193:THR:CG2	1:A:196:LEU:HD22	2.38	0.46
1:A:204:THR:HG22	1:A:204:THR:O	2.15	0.46
1:A:251:LEU:HD11	1:A:257:ILE:CG2	2.46	0.46
1:A:858:LEU:O	1:A:862:HIS:HB2	2.16	0.46

*Continued on next page...*

*Continued from previous page...*

Atom-1	Atom-2	Interatomic distance (Å)	Clash overlap (Å)
1:A:1076:ILE:HD11	2:C:332:VAL:HG21	1.97	0.46
2:C:165:ASP:O	2:C:166:LYS:HG3	2.14	0.46
2:C:264:ALA:HB1	2:C:269:PHE:HB3	1.97	0.46
1:A:410:LYS:HB3	1:A:410:LYS:HE3	1.52	0.46
1:A:717:GLU:OE2	1:A:718:LEU:HD23	2.16	0.46
1:A:801:MET:HE3	1:A:801:MET:HB3	1.74	0.46
2:C:158:GLU:HA	2:C:160:TYR:H	1.80	0.46
1:A:23:PHE:CE1	1:A:29:VAL:HG13	2.49	0.46
1:A:261:ALA:HB1	1:A:264:THR:CG2	2.45	0.46
1:A:886:LEU:HB3	1:A:887:PRO:HD3	1.97	0.46
2:C:169:ALA:CB	2:C:170:PRO:CD	2.93	0.46
2:C:187:LEU:HD22	2:C:287:PRO:HG2	1.97	0.46
1:A:355:ILE:O	8:A:1201:HOH:O	2.20	0.46
2:C:141:SER:O	2:C:146:ASP:HB2	2.15	0.46
1:A:652:LEU:HD11	1:A:687:ALA:C	2.35	0.46
1:A:1069:ALA:O	1:A:1073:LEU:HG	2.15	0.46
1:A:24:VAL:CG2	1:A:207:ALA:HB3	2.46	0.46
2:C:77:GLU:HA	2:C:312:LEU:O	2.16	0.46
2:C:202:LYS:HE3	2:C:246:ASP:OD2	2.16	0.46
1:A:20:ARG:NH1	1:A:262:VAL:O	2.49	0.46
1:A:370:GLY:O	1:A:866:TYR:OH	2.24	0.46
1:A:704:THR:HG22	1:A:704:THR:O	2.16	0.46
1:A:776:LEU:HD13	1:A:801:MET:CE	2.37	0.46
1:A:1088:LYS:C	1:A:1089:ASN:HD22	2.18	0.46
1:A:222:VAL:HG13	1:A:222:VAL:O	2.15	0.46
2:C:66:ILE:HG12	2:C:330:ILE:CD1	2.46	0.46
1:A:27:HIS:ND1	1:A:204:THR:HA	2.30	0.46
1:A:50:TYR:CD1	1:A:58:LYS:HE2	2.51	0.46
1:A:193:THR:O	1:A:193:THR:HG22	2.16	0.46
1:A:410:LYS:HE2	1:A:681:ALA:HA	1.97	0.46
1:A:962:LEU:HD23	1:A:962:LEU:HA	1.81	0.46
1:A:651:LYS:HD2	1:A:652:LEU:O	2.16	0.46
1:A:772:LYS:O	1:A:776:LEU:HB2	2.16	0.46
1:A:920:ILE:HG13	1:A:920:ILE:O	2.16	0.46
1:A:652:LEU:HD13	1:A:688:CYS:SG	2.56	0.45
1:A:679:GLU:OE2	1:A:679:GLU:N	2.49	0.45
2:C:237:LEU:HG	7:C:401:NAG:C8	2.44	0.45
1:A:387:GLU:OE1	1:A:834:LYS:NZ	2.38	0.45
1:A:685:CYS:SG	1:A:690:LEU:HD23	2.56	0.45
2:C:44:ILE:O	2:C:44:ILE:HG13	2.17	0.45
2:C:139:ASP:HB2	2:C:171:CYS:SG	2.55	0.45

*Continued on next page...*

*Continued from previous page...*

Atom-1	Atom-2	Interatomic distance (Å)	Clash overlap (Å)
1:A:292:LEU:O	1:A:296:LEU:HB2	2.16	0.45
1:A:413:THR:HG23	1:A:833:ILE:HD11	1.98	0.45
1:A:991:GLY:HA2	2:C:263:THR:O	2.16	0.45
1:A:288:ILE:HG23	1:A:359:MET:HE1	1.97	0.45
1:A:381:TYR:CE1	2:C:27:ARG:HB3	2.52	0.45
1:A:723:ARG:HE	1:A:778:ILE:HG23	1.80	0.45
2:C:167:PRO:HD2	2:C:229:GLY:O	2.16	0.45
1:A:132:LYS:HE3	1:A:132:LYS:HB2	1.67	0.45
1:A:321:GLU:HG2	1:A:326:GLN:HG2	1.98	0.45
1:A:705:ILE:O	1:A:707:GLU:N	2.50	0.45
1:A:710:ARG:O	1:A:710:ARG:HD2	2.16	0.45
1:A:928:GLN:CG	1:A:932:ILE:HG23	2.47	0.45
1:A:1079:PHE:N	1:A:1080:PRO:HD2	2.31	0.45
1:A:321:GLU:N	1:A:322:PRO:HD3	2.31	0.45
2:C:170:PRO:HG2	2:C:233:PRO:HG3	1.99	0.45
2:C:246:ASP:OD1	2:C:247:PRO:HD2	2.17	0.45
1:A:390:LEU:CD2	1:A:392:ASN:HD21	2.30	0.45
1:A:962:LEU:HD21	1:A:1080:PRO:HG2	1.99	0.45
1:A:413:THR:HG23	1:A:833:ILE:HD12	1.99	0.45
1:A:880:LYS:HD2	1:A:916:THR:HB	1.98	0.45
2:C:50:VAL:O	2:C:53:ILE:HB	2.17	0.45
1:A:56:LEU:HB2	1:A:57:PRO:HD3	1.98	0.45
1:A:171:CYS:SG	1:A:173:VAL:HG23	2.57	0.45
1:A:299:LEU:HD12	1:A:299:LEU:O	2.17	0.44
1:A:415:THR:CG2	1:A:684:THR:HG21	2.47	0.44
1:A:726:LEU:HD11	1:A:743:GLU:HB2	1.98	0.44
1:A:883:CYS:SG	1:A:963:ALA:HA	2.58	0.44
1:A:63:GLN:OE1	1:A:99:ILE:HG23	2.17	0.44
1:A:723:ARG:HG3	1:A:747:TYR:CD2	2.53	0.44
1:A:783:THR:HG23	1:A:784:ALA:N	2.32	0.44
1:A:865:LEU:HD11	1:A:932:ILE:HG21	1.95	0.44
1:A:716:HIS:CE1	1:A:774:ILE:HD13	2.52	0.44
1:A:1089:ASN:OD1	2:C:46:THR:HG22	2.17	0.44
1:A:39:ARG:HA	1:A:39:ARG:HD2	1.77	0.44
1:A:54:ASN:ND2	1:A:54:ASN:O	2.50	0.44
1:A:771:TYR:O	1:A:775:PHE:HB3	2.17	0.44
1:A:127:ILE:HD12	1:A:136:LYS:HD3	1.99	0.44
1:A:280:LYS:HE2	1:A:827:SER:O	2.18	0.44
2:C:169:ALA:HB3	2:C:170:PRO:HD3	1.96	0.44
2:C:251:GLY:C	2:C:253:ILE:H	2.21	0.44
1:A:652:LEU:CD2	1:A:684:THR:HG23	2.47	0.44

*Continued on next page...*

*Continued from previous page...*

Atom-1	Atom-2	Interatomic distance (Å)	Clash overlap (Å)
1:A:938:ASP:HB3	1:A:941:LEU:CD1	2.48	0.44
1:A:125:VAL:HG23	1:A:125:VAL:O	2.18	0.44
1:A:251:LEU:HD11	1:A:257:ILE:HG23	2.00	0.44
1:A:278:SER:O	1:A:279:GLN:HB2	2.18	0.44
1:A:970:PHE:CE1	1:A:1002:VAL:HG12	2.53	0.44
2:C:68:ILE:HG22	2:C:317:TRP:HH2	1.83	0.44
1:A:160:ILE:HD11	1:A:221:PHE:CZ	2.52	0.44
1:A:213:GLN:OE1	1:A:213:GLN:HA	2.18	0.43
1:A:209:ILE:HD13	1:A:225:ILE:HB	1.99	0.43
1:A:380:PHE:O	1:A:388:GLY:HA2	2.18	0.43
1:A:992:ASN:HB3	2:C:265:ALA:CA	2.48	0.43
1:A:1044:ILE:HD13	2:C:144:ASN:HD21	1.81	0.43
2:C:169:ALA:HB3	2:C:170:PRO:HD2	1.98	0.43
1:A:323:TRP:O	1:A:323:TRP:HE3	2.01	0.43
1:A:756:LEU:O	1:A:760:LEU:HB2	2.19	0.43
2:C:168:ILE:HA	2:C:231:THR:O	2.18	0.43
2:C:264:ALA:O	2:C:265:ALA:HB3	2.18	0.43
1:A:401:GLY:O	1:A:402:GLN:NE2	2.44	0.43
1:A:870:ILE:O	1:A:870:ILE:HG13	2.17	0.43
1:A:938:ASP:HB3	1:A:941:LEU:HD12	2.00	0.43
1:A:45:ILE:O	1:A:45:ILE:HG13	2.18	0.43
1:A:63:GLN:HE22	1:A:102:THR:HB	1.81	0.43
1:A:86:THR:CG2	1:A:908:LEU:HB2	2.49	0.43
1:A:151:ALA:O	1:A:152:ASP:HB2	2.18	0.43
1:A:720:ILE:C	1:A:721:GLU:HG3	2.38	0.43
2:C:82:TYR:HB3	2:C:106:ILE:HD12	1.99	0.43
2:C:179:PHE:CE2	2:C:181:ASP:HB2	2.53	0.43
2:C:214:PHE:O	2:C:253:ILE:HG22	2.19	0.43
1:A:174:THR:CG2	1:A:252:LYS:HD3	2.48	0.43
1:A:678:MET:HA	1:A:681:ALA:HB3	2.00	0.43
1:A:705:ILE:HD12	1:A:755:THR:HG21	2.00	0.43
1:A:759:ILE:O	1:A:763:SER:HB3	2.19	0.43
1:A:995:PHE:O	1:A:999:VAL:HG23	2.18	0.43
1:A:331:GLU:OE2	1:A:339:LYS:HE2	2.19	0.43
1:A:707:GLU:HB3	1:A:710:ARG:HB3	2.01	0.43
2:C:97:PRO:HB2	2:C:100:THR:HG22	2.00	0.43
2:C:190:GLN:OE1	2:C:190:GLN:HA	2.18	0.43
1:A:93:LEU:HD12	1:A:93:LEU:HA	1.80	0.43
2:C:27:ARG:N	2:C:28:PRO:CD	2.81	0.43
2:C:264:ALA:HB1	2:C:269:PHE:CB	2.49	0.43
1:A:371:SER:HB2	1:A:391:VAL:HG11	2.00	0.43

*Continued on next page...*

*Continued from previous page...*

Atom-1	Atom-2	Interatomic distance (Å)	Clash overlap (Å)
1:A:50:TYR:HD1	1:A:58:LYS:HE2	1.83	0.43
1:A:754:SER:O	1:A:757:SER:OG	2.37	0.43
1:A:884:PHE:CZ	1:A:908:LEU:HD23	2.54	0.43
1:A:909:THR:O	1:A:913:ILE:HG13	2.19	0.43
2:C:175:MET:O	2:C:236:TRP:CH2	2.71	0.43
1:A:674:THR:OG1	1:A:675:GLY:N	2.53	0.42
1:A:719:LEU:HG	1:A:720:ILE:N	2.32	0.42
2:C:178:MET:HA	2:C:260:TRP:CD1	2.54	0.42
1:A:206:ARG:HB3	1:A:228:TYR:HD2	1.84	0.42
1:A:296:LEU:HD13	1:A:296:LEU:HA	1.85	0.42
2:C:200:LYS:HG3	2:C:275:LEU:HB2	2.01	0.42
2:C:345:VAL:O	2:C:348:HIS:N	2.50	0.42
1:A:787:CYS:HB3	1:A:790:MET:CE	2.49	0.42
1:A:390:LEU:HD21	1:A:392:ASN:HD21	1.84	0.42
2:C:79:GLU:OE2	2:C:270:ARG:NH2	2.53	0.42
2:C:180:ASN:ND2	7:C:401:NAG:H83	2.23	0.42
1:A:179:ASP:OD1	1:A:181:GLU:HB2	2.19	0.42
1:A:1090:VAL:HG21	2:C:347:ASN:OD1	2.19	0.42
2:C:154:SER:O	2:C:161:ARG:HG3	2.20	0.42
2:C:228:LYS:HD2	2:C:228:LYS:HA	1.88	0.42
1:A:256:LYS:HZ1	1:A:258:TYR:HE2	1.68	0.42
1:A:405:TYR:CE2	1:A:669:LYS:HD2	2.55	0.42
1:A:409:ASP:OD1	4:A:1101:ALF:F1	2.28	0.42
1:A:1070:ILE:O	1:A:1074:ILE:HG23	2.19	0.42
2:C:111:GLU:HA	2:C:111:GLU:OE1	2.20	0.42
2:C:178:MET:HB2	2:C:236:TRP:HH2	1.84	0.42
2:C:193:TYR:HD1	2:C:194:PRO:HD2	1.85	0.42
1:A:970:PHE:HZ	1:A:1006:THR:HG21	1.84	0.42
2:C:133:ARG:O	2:C:133:ARG:HG2	2.20	0.42
1:A:202:ILE:O	1:A:202:ILE:HG22	2.20	0.42
1:A:911:TYR:O	1:A:916:THR:OG1	2.32	0.42
1:A:940:ARG:H	1:A:940:ARG:HG2	1.64	0.42
2:C:62:ILE:N	2:C:63:PRO:HD2	2.34	0.42
1:A:116:ALA:O	1:A:120:VAL:HG12	2.20	0.41
1:A:277:LYS:HB2	1:A:825:LEU:HD22	2.00	0.41
2:C:86:GLU:HG2	2:C:89:SER:OG	2.20	0.41
2:C:157:CYS:CB	2:C:172:GLY:HA2	2.50	0.41
1:A:24:VAL:HG21	1:A:207:ALA:HB3	2.02	0.41
1:A:146:VAL:HA	1:A:259:GLY:O	2.19	0.41
1:A:678:MET:HA	1:A:788:CYS:SG	2.60	0.41
1:A:719:LEU:HD13	1:A:723:ARG:HH22	1.85	0.41

*Continued on next page...*



*Continued from previous page...*

Atom-1	Atom-2	Interatomic distance (Å)	Clash overlap (Å)
1:A:225:ILE:CD1	1:A:227:ILE:HD11	2.51	0.41
2:C:53:ILE:HD13	2:C:53:ILE:HA	1.90	0.41
2:C:102:CYS:HB3	2:C:297:TYR:HB3	2.02	0.41
1:A:724:LYS:C	1:A:724:LYS:HD2	2.41	0.41
1:A:725:LYS:CA	1:A:725:LYS:HE3	2.49	0.41
1:A:898:SER:HB2	2:C:132:ARG:HB3	2.03	0.41
2:C:27:ARG:N	2:C:28:PRO:HD2	2.35	0.41
2:C:124:LEU:HD12	2:C:269:PHE:CZ	2.56	0.41
1:A:74:ILE:HD13	1:A:74:ILE:HA	1.92	0.41
1:A:149:VAL:HG12	1:A:153:GLU:HB2	2.01	0.41
1:A:233:GLU:HG3	1:A:235:VAL:H	1.86	0.41
1:A:365:MET:HE1	6:A:1103:P5S:H25	2.02	0.41
1:A:1078:LEU:O	1:A:1082:ILE:HG13	2.21	0.41
1:A:121:ASN:HB3	1:A:139:GLU:HB3	2.02	0.41
1:A:712:GLU:HB2	1:A:771:TYR:OH	2.21	0.41
2:C:102:CYS:O	2:C:296:THR:HA	2.21	0.41
2:C:160:TYR:CE2	2:C:173:ALA:HB2	2.55	0.41
1:A:23:PHE:CD1	1:A:29:VAL:HG13	2.56	0.40
1:A:78:VAL:HG12	1:A:349:VAL:HG21	2.02	0.40
1:A:191:ARG:HE	1:A:191:ARG:HB3	1.49	0.40
1:A:225:ILE:HD11	1:A:227:ILE:HD11	2.03	0.40
1:A:705:ILE:HD13	1:A:711:LYS:HB2	1.98	0.40
1:A:1045:TRP:HB3	1:A:1047:PHE:CD2	2.56	0.40
1:A:313:TRP:CH2	1:A:896:GLY:HA3	2.56	0.40
1:A:1021:ILE:O	1:A:1025:VAL:HG13	2.21	0.40
1:A:1074:ILE:O	1:A:1075:PHE:HD1	2.05	0.40
1:A:265:GLY:C	1:A:267:GLU:H	2.25	0.40
2:C:137:SER:O	2:C:172:GLY:HA3	2.20	0.40
2:C:183:LEU:HD22	2:C:295:VAL:CG1	2.51	0.40
1:A:125:VAL:O	1:A:125:VAL:CG2	2.69	0.40
1:A:719:LEU:HG	1:A:720:ILE:HD13	2.02	0.40
1:A:54:ASN:ND2	1:A:58:LYS:HD3	2.30	0.40
1:A:724:LYS:HD2	1:A:724:LYS:O	2.22	0.40
2:C:53:ILE:HD13	2:C:56:ILE:HD12	2.04	0.40

There are no symmetry-related clashes.



## 5.3 Torsion angles [i](#)

### 5.3.1 Protein backbone [i](#)

In the following table, the Percentiles column shows the percent Ramachandran outliers of the chain as a percentile score with respect to all PDB entries followed by that with respect to all EM entries.

The Analysed column shows the number of residues for which the backbone conformation was analysed, and the total number of residues.

Mol	Chain	Analysed	Favoured	Allowed	Outliers	Percentiles	
1	A	807/1084 (74%)	741 (92%)	64 (8%)	2 (0%)	47	82
2	C	322/361 (89%)	300 (93%)	22 (7%)	0	100	100
All	All	1129/1445 (78%)	1041 (92%)	86 (8%)	2 (0%)	50	82

All (2) Ramachandran outliers are listed below:

Mol	Chain	Res	Type
1	A	43	ASN
1	A	328	THR

### 5.3.2 Protein sidechains [i](#)

In the following table, the Percentiles column shows the percent sidechain outliers of the chain as a percentile score with respect to all PDB entries followed by that with respect to all EM entries.

The Analysed column shows the number of residues for which the sidechain conformation was analysed, and the total number of residues.

Mol	Chain	Analysed	Rotameric	Outliers	Percentiles	
1	A	729/963 (76%)	687 (94%)	42 (6%)	20	55
2	C	288/317 (91%)	271 (94%)	17 (6%)	19	54
All	All	1017/1280 (80%)	958 (94%)	59 (6%)	24	55

All (59) residues with a non-rotameric sidechain are listed below:

Mol	Chain	Res	Type
1	A	110	ASP
1	A	129	GLU
1	A	138	SER
1	A	163	SER

*Continued on next page...*

*Continued from previous page...*

<b>Mol</b>	<b>Chain</b>	<b>Res</b>	<b>Type</b>
1	A	171	CYS
1	A	191	ARG
1	A	192	ASP
1	A	197	CYS
1	A	232	LEU
1	A	242	GLU
1	A	296	LEU
1	A	309	LEU
1	A	364	GLU
1	A	395	ASP
1	A	651	LYS
1	A	677	LYS
1	A	679	GLU
1	A	683	SER
1	A	686	TYR
1	A	689	ARG
1	A	707	GLU
1	A	708	SER
1	A	717	GLU
1	A	723	ARG
1	A	724	LYS
1	A	745	GLN
1	A	746	GLU
1	A	752	ASP
1	A	754	SER
1	A	767	SER
1	A	773	SER
1	A	789	ARG
1	A	816	ASP
1	A	870	ILE
1	A	879	TYR
1	A	895	CYS
1	A	918	LEU
1	A	926	LEU
1	A	962	LEU
1	A	980	THR
1	A	989	VAL
1	A	1055	PHE
2	C	27	ARG
2	C	45	LEU
2	C	49	THR
2	C	68	ILE

*Continued on next page...*

*Continued from previous page...*

Mol	Chain	Res	Type
2	C	72	SER
2	C	92	ASN
2	C	100	THR
2	C	102	CYS
2	C	129	GLN
2	C	132	ARG
2	C	184	GLU
2	C	208	THR
2	C	216	ASN
2	C	228	LYS
2	C	236	TRP
2	C	245	SER
2	C	334	SER

Sometimes sidechains can be flipped to improve hydrogen bonding and reduce clashes. All (23) such sidechains are listed below:

Mol	Chain	Res	Type
1	A	26	ASN
1	A	43	ASN
1	A	54	ASN
1	A	63	GLN
1	A	79	GLN
1	A	106	GLN
1	A	392	ASN
1	A	745	GLN
1	A	764	GLN
1	A	777	GLN
1	A	819	ASN
1	A	840	GLN
1	A	862	HIS
1	A	872	HIS
1	A	1022	ASN
2	C	36	GLN
2	C	126	ASN
2	C	129	GLN
2	C	142	GLN
2	C	144	ASN
2	C	152	ASN
2	C	163	ASN
2	C	298	ASN

### 5.3.3 RNA [i](#)

There are no RNA molecules in this entry.

## 5.4 Non-standard residues in protein, DNA, RNA chains [i](#)

There are no non-standard protein/DNA/RNA residues in this entry.

## 5.5 Carbohydrates [i](#)

2 monosaccharides are modelled in this entry.

In the following table, the Counts columns list the number of bonds (or angles) for which Mogul statistics could be retrieved, the number of bonds (or angles) that are observed in the model and the number of bonds (or angles) that are defined in the Chemical Component Dictionary. The Link column lists molecule types, if any, to which the group is linked. The Z score for a bond length (or angle) is the number of standard deviations the observed value is removed from the expected value. A bond length (or angle) with  $|Z| > 2$  is considered an outlier worth inspection. RMSZ is the root-mean-square of all Z scores of the bond lengths (or angles).

Mol	Type	Chain	Res	Link	Bond lengths			Bond angles		
					Counts	RMSZ	# Z  > 2	Counts	RMSZ	# Z  > 2
3	NAG	B	1	3	14,14,15	0.58	0	17,19,21	1.36	1 (5%)
3	MAN	B	2	3	11,11,12	0.24	0	15,15,17	0.67	0

In the following table, the Chirals column lists the number of chiral outliers, the number of chiral centers analysed, the number of these observed in the model and the number defined in the Chemical Component Dictionary. Similar counts are reported in the Torsion and Rings columns. '-' means no outliers of that kind were identified.

Mol	Type	Chain	Res	Link	Chirals	Torsions	Rings
3	NAG	B	1	3	-	0/6/23/26	0/1/1/1
3	MAN	B	2	3	-	1/2/19/22	1/1/1/1

There are no bond length outliers.

All (1) bond angle outliers are listed below:

Mol	Chain	Res	Type	Atoms	Z	Observed(°)	Ideal(°)
3	B	1	NAG	C4-C3-C2	4.43	117.51	111.02

There are no chirality outliers.

All (1) torsion outliers are listed below:

Mol	Chain	Res	Type	Atoms
3	B	2	MAN	C4-C5-C6-O6

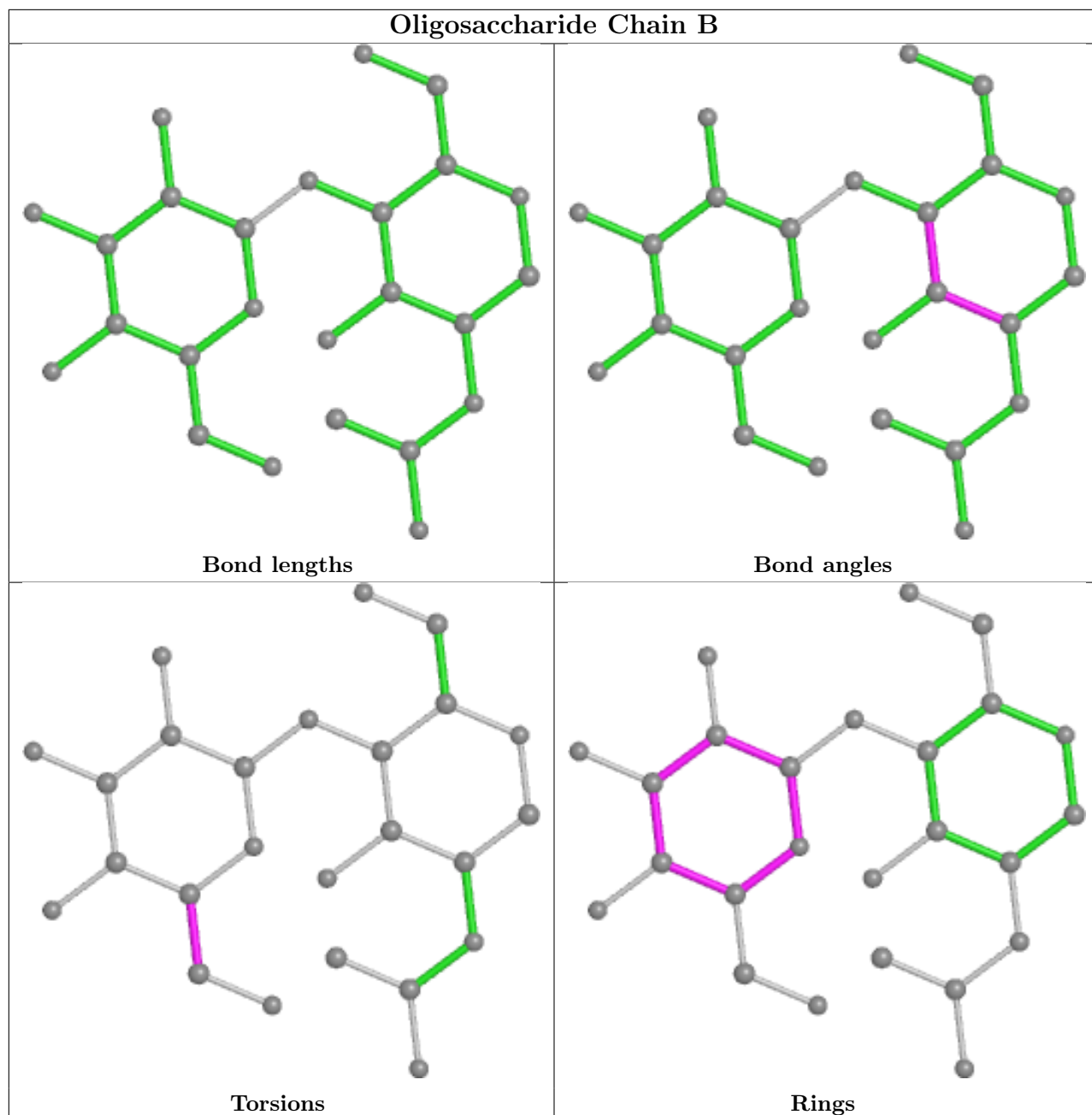
All (1) ring outliers are listed below:

Mol	Chain	Res	Type	Atoms
3	B	2	MAN	C1-C2-C3-C4-C5-O5

1 monomer is involved in 2 short contacts:

Mol	Chain	Res	Type	Clashes	Symm-Clashes
3	B	1	NAG	2	0

The following is a two-dimensional graphical depiction of Mogul quality analysis of bond lengths, bond angles, torsion angles, and ring geometry for oligosaccharide.



## 5.6 Ligand geometry [i](#)

Of 6 ligands modelled in this entry, 1 is monoatomic - leaving 5 for Mogul analysis.

In the following table, the Counts columns list the number of bonds (or angles) for which Mogul statistics could be retrieved, the number of bonds (or angles) that are observed in the model and the number of bonds (or angles) that are defined in the Chemical Component Dictionary. The Link column lists molecule types, if any, to which the group is linked. The Z score for a bond length (or angle) is the number of standard deviations the observed value is removed from the expected value. A bond length (or angle) with  $|Z| > 2$  is considered an outlier worth inspection. RMSZ is the root-mean-square of all Z scores of the bond lengths (or angles).

Mol	Type	Chain	Res	Link	Bond lengths			Bond angles		
					Counts	RMSZ	# Z  > 2	Counts	RMSZ	# Z  > 2
7	NAG	C	401	2	14,14,15	0.30	0	17,19,21	0.56	0
7	NAG	C	403	2	13,13,15	0.36	0	14,17,21	0.56	0
6	P5S	A	1103	-	52,53,53	0.99	4 (7%)	56,60,60	1.39	9 (16%)
7	NAG	C	402	2	14,14,15	0.55	0	17,19,21	2.30	3 (17%)
4	ALF	A	1101	-	0,4,4	-	-	-	-	-

In the following table, the Chirals column lists the number of chiral outliers, the number of chiral centers analysed, the number of these observed in the model and the number defined in the Chemical Component Dictionary. Similar counts are reported in the Torsion and Rings columns. '-' means no outliers of that kind were identified.

Mol	Type	Chain	Res	Link	Chirals	Torsions	Rings
7	NAG	C	401	2	-	4/6/23/26	0/1/1/1
7	NAG	C	403	2	-	2/6/19/26	0/1/1/1
6	P5S	A	1103	-	-	24/59/59/59	-
7	NAG	C	402	2	-	2/6/23/26	0/1/1/1

All (4) bond length outliers are listed below:

Mol	Chain	Res	Type	Atoms	Z	Observed(Å)	Ideal(Å)
6	A	1103	P5S	O19-C17	4.25	1.45	1.33
6	A	1103	P5S	O37-C38	2.87	1.42	1.34
6	A	1103	P5S	P12-O13	-2.30	1.42	1.50
6	A	1103	P5S	O37-C2	-2.25	1.41	1.46

All (12) bond angle outliers are listed below:

Mol	Chain	Res	Type	Atoms	Z	Observed(°)	Ideal(°)
7	C	402	NAG	C1-O5-C5	6.96	121.62	112.19
6	A	1103	P5S	O37-C38-C39	4.96	122.20	111.50
7	C	402	NAG	O5-C1-C2	3.75	117.20	111.29
7	C	402	NAG	C4-C3-C2	-3.69	105.62	111.02
6	A	1103	P5S	O19-C17-C20	3.36	122.44	111.91
6	A	1103	P5S	OXT-C-O	-3.20	116.81	124.09
6	A	1103	P5S	O19-C17-O18	-2.48	117.33	123.59
6	A	1103	P5S	OXT-C-CA	2.36	121.42	113.38
6	A	1103	P5S	O37-C38-O47	-2.24	118.29	123.70
6	A	1103	P5S	O16-P12-O13	-2.15	100.65	109.07
6	A	1103	P5S	O19-C1-C2	2.15	114.68	108.43
6	A	1103	P5S	C40-C39-C38	-2.11	105.95	113.62

There are no chirality outliers.

All (32) torsion outliers are listed below:

Mol	Chain	Res	Type	Atoms
6	A	1103	P5S	O-C-CA-CB
6	A	1103	P5S	OXT-C-CA-CB
6	A	1103	P5S	N-CA-CB-OG
6	A	1103	P5S	CB-OG-P12-O13
6	A	1103	P5S	CB-OG-P12-O15
7	C	403	NAG	C8-C7-N2-C2
7	C	403	NAG	O7-C7-N2-C2
7	C	401	NAG	C8-C7-N2-C2
6	A	1103	P5S	OXT-C-CA-N
7	C	401	NAG	O7-C7-N2-C2
6	A	1103	P5S	C17-C20-C21-C22
7	C	402	NAG	O5-C5-C6-O6
6	A	1103	P5S	CB-OG-P12-O16
6	A	1103	P5S	C52-C53-C54-C55
7	C	401	NAG	C4-C5-C6-O6
6	A	1103	P5S	C29-C30-C31-C32
6	A	1103	P5S	C-CA-CB-OG
7	C	401	NAG	O5-C5-C6-O6
6	A	1103	P5S	C48-C49-C50-C51
6	A	1103	P5S	C26-C27-C28-C29
6	A	1103	P5S	C20-C17-O19-C1
6	A	1103	P5S	O19-C1-C2-C3
6	A	1103	P5S	O18-C17-O19-C1
6	A	1103	P5S	O19-C1-C2-O37
6	A	1103	P5S	O-C-CA-N
6	A	1103	P5S	C43-C44-C45-C46
6	A	1103	P5S	C41-C42-C43-C44
6	A	1103	P5S	C39-C40-C41-C42
6	A	1103	P5S	C44-C45-C46-C48
6	A	1103	P5S	C40-C41-C42-C43
6	A	1103	P5S	C30-C31-C32-C33
7	C	402	NAG	C4-C5-C6-O6

There are no ring outliers.

4 monomers are involved in 21 short contacts:

Mol	Chain	Res	Type	Clashes	Symm-Clashes
7	C	401	NAG	6	0
6	A	1103	P5S	5	0
7	C	402	NAG	7	0

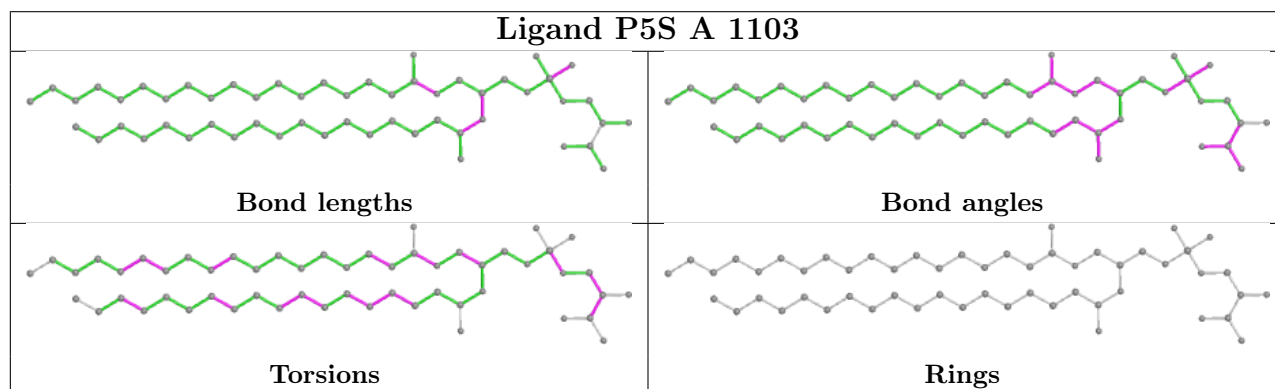
*Continued on next page...*

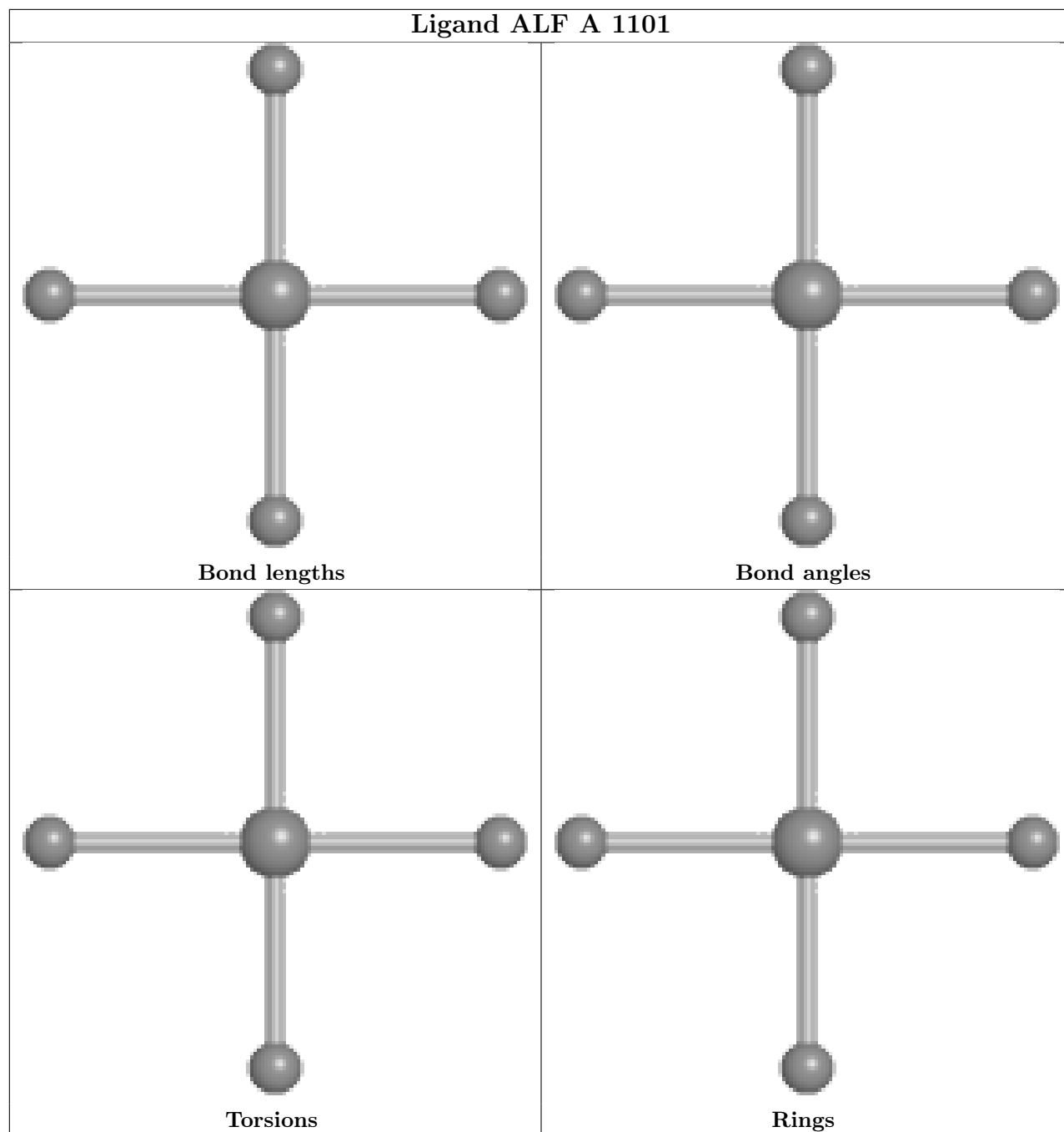


*Continued from previous page...*

Mol	Chain	Res	Type	Clashes	Symm-Clashes
4	A	1101	ALF	3	0

The following is a two-dimensional graphical depiction of Mogul quality analysis of bond lengths, bond angles, torsion angles, and ring geometry for all instances of the Ligand of Interest. In addition, ligands with molecular weight > 250 and outliers as shown on the validation Tables will also be included. For torsion angles, if less than 5% of the Mogul distribution of torsion angles is within 10 degrees of the torsion angle in question, then that torsion angle is considered an outlier. Any bond that is central to one or more torsion angles identified as an outlier by Mogul will be highlighted in the graph. For rings, the root-mean-square deviation (RMSD) between the ring in question and similar rings identified by Mogul is calculated over all ring torsion angles. If the average RMSD is greater than 60 degrees and the minimal RMSD between the ring in question and any Mogul-identified rings is also greater than 60 degrees, then that ring is considered an outlier. The outliers are highlighted in purple. The color gray indicates Mogul did not find sufficient equivalents in the CSD to analyse the geometry.





## 5.7 Other polymers [i](#)

There are no such residues in this entry.

## 5.8 Polymer linkage issues [i](#)

There are no chain breaks in this entry.

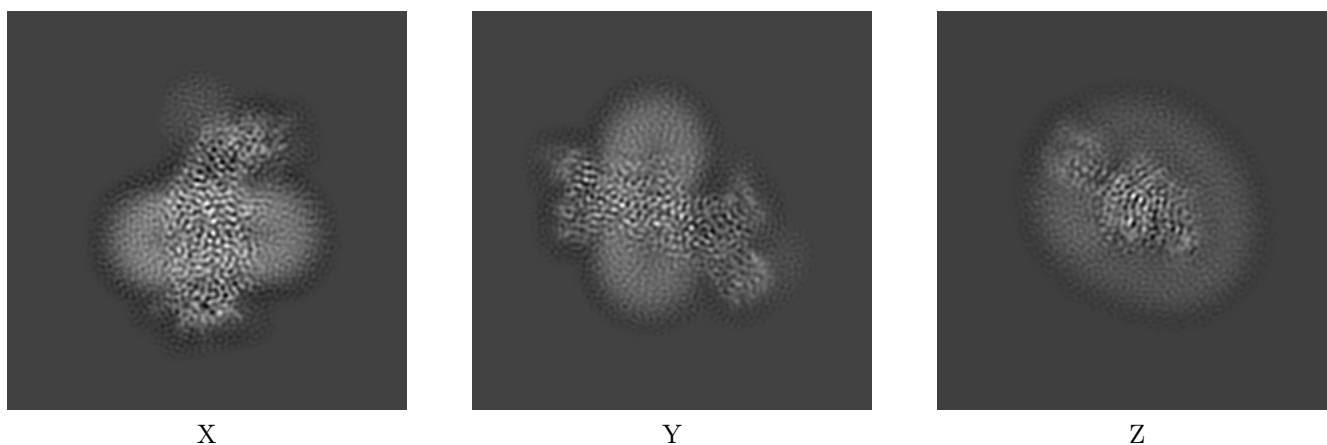
## 6 Map visualisation [i](#)

This section contains visualisations of the EMDB entry EMD-30168. These allow visual inspection of the internal detail of the map and identification of artifacts.

No raw map or half-maps were deposited for this entry and therefore no images, graphs, etc. pertaining to the raw map can be shown.

### 6.1 Orthogonal projections [i](#)

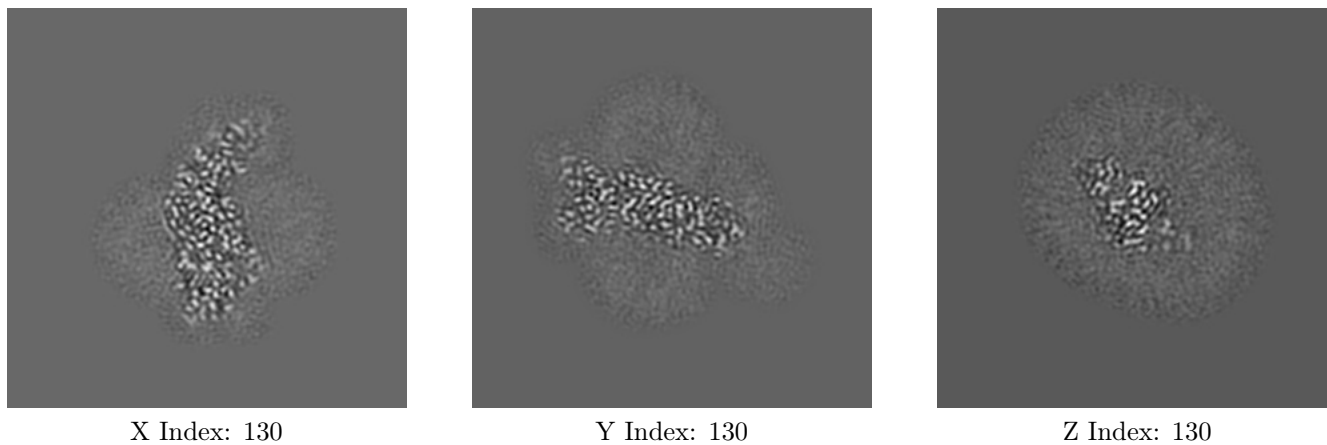
#### 6.1.1 Primary map



The images above show the map projected in three orthogonal directions.

### 6.2 Central slices [i](#)

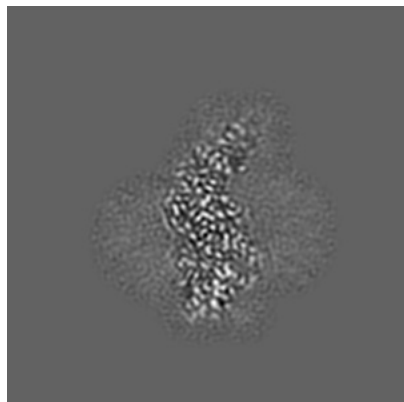
#### 6.2.1 Primary map



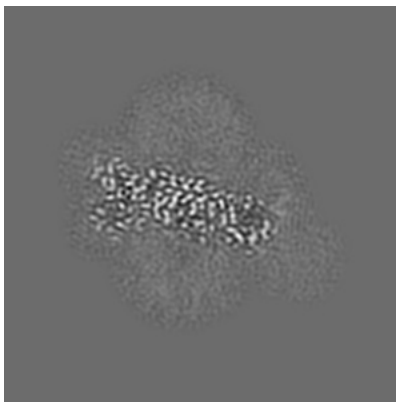
The images above show central slices of the map in three orthogonal directions.

## 6.3 Largest variance slices [i](#)

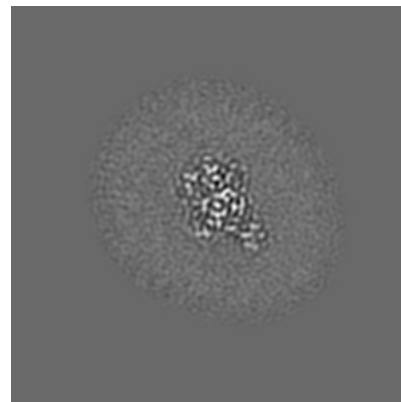
### 6.3.1 Primary map



X Index: 131



Y Index: 131



Z Index: 104

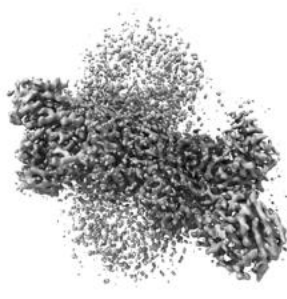
The images above show the largest variance slices of the map in three orthogonal directions.

## 6.4 Orthogonal surface views [i](#)

### 6.4.1 Primary map



X



Y



Z

The images above show the 3D surface view of the map at the recommended contour level 0.0158. These images, in conjunction with the slice images, may facilitate assessment of whether an appropriate contour level has been provided.

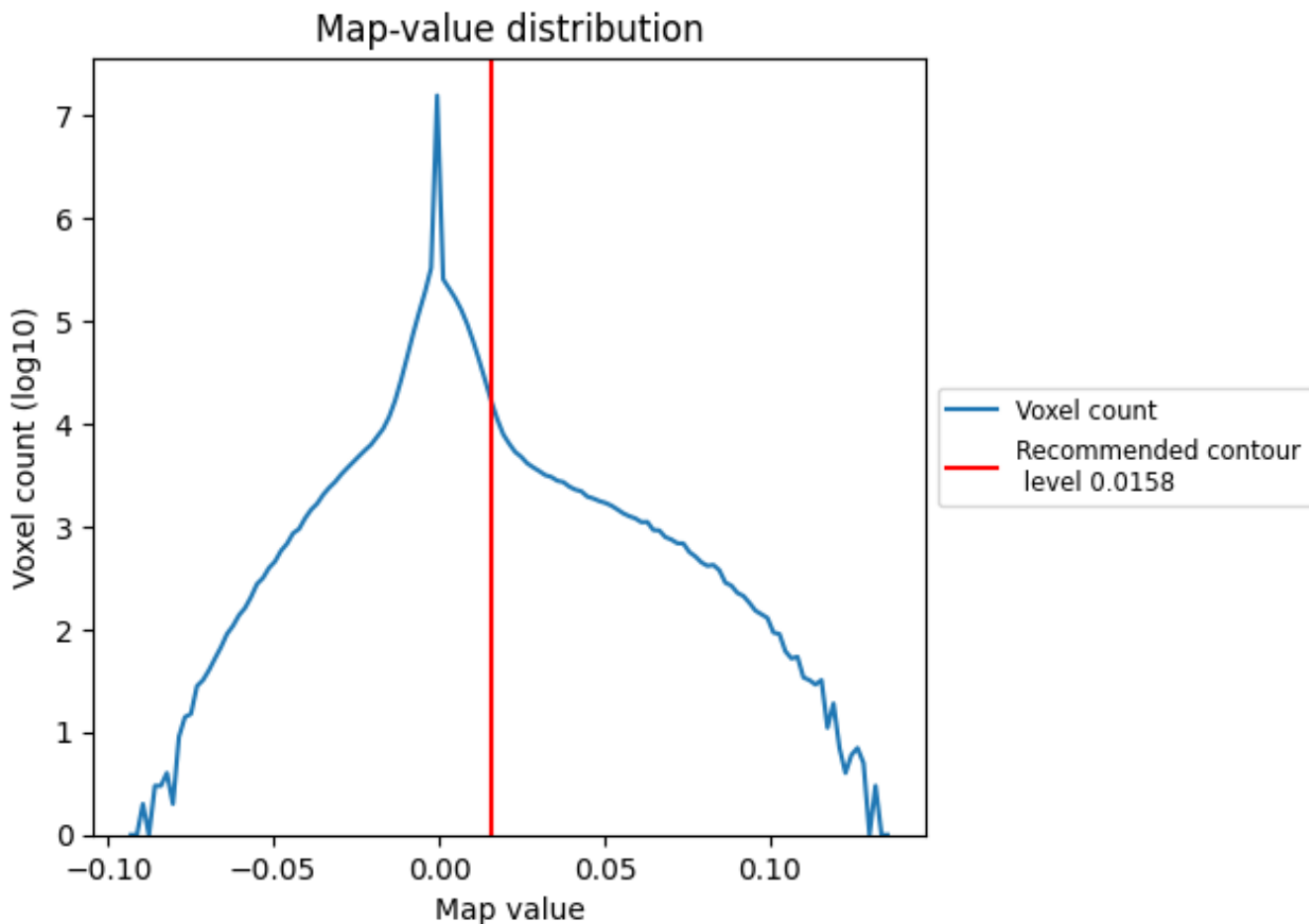
## 6.5 Mask visualisation

This section was not generated. No masks/segmentation were deposited.

## 7 Map analysis [i](#)

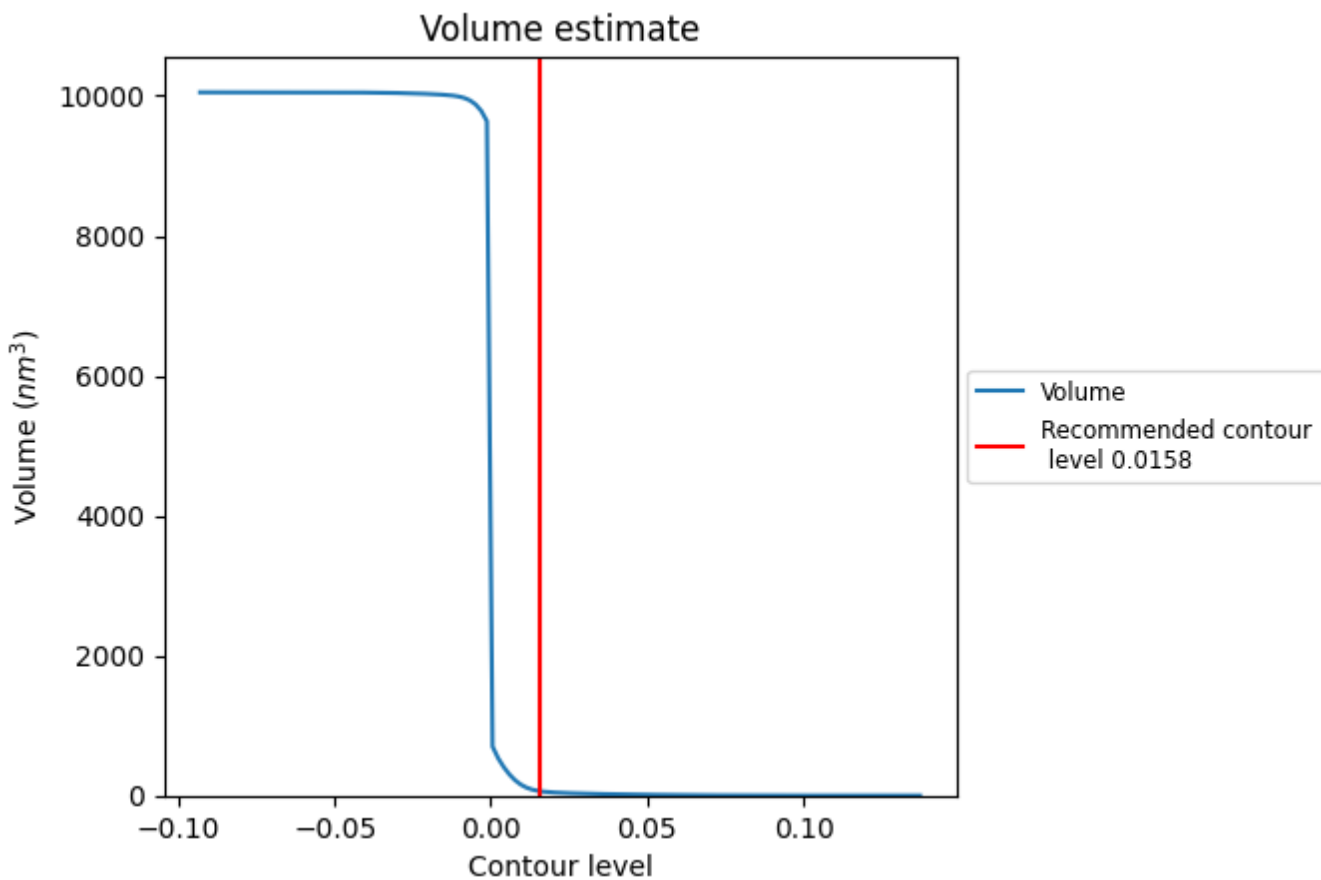
This section contains the results of statistical analysis of the map.

### 7.1 Map-value distribution [i](#)



The map-value distribution is plotted in 128 intervals along the x-axis. The y-axis is logarithmic. A spike in this graph at zero usually indicates that the volume has been masked.

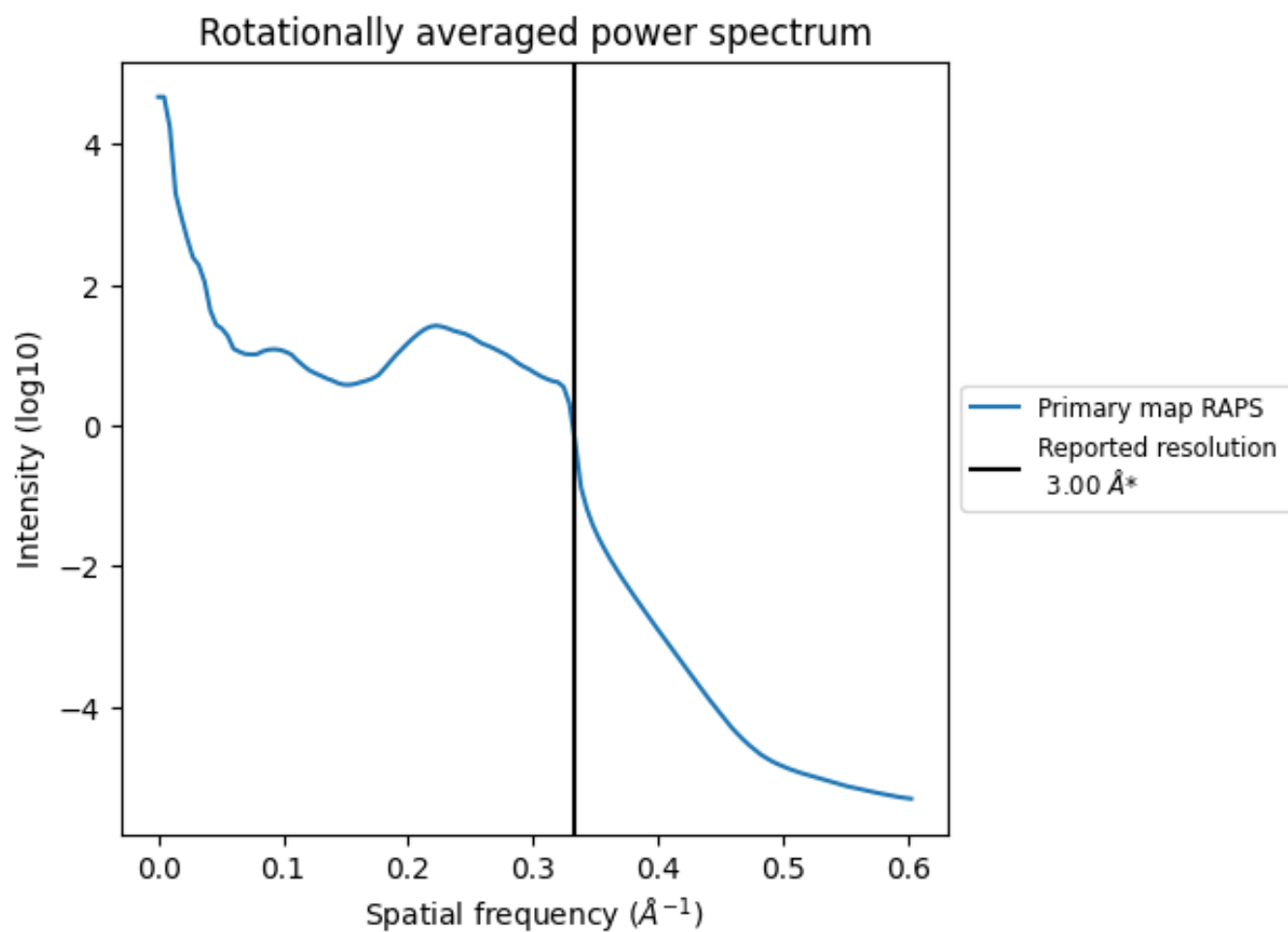
## 7.2 Volume estimate [i](#)



The volume at the recommended contour level is 62 nm<sup>3</sup>; this corresponds to an approximate mass of 56 kDa.

The volume estimate graph shows how the enclosed volume varies with the contour level. The recommended contour level is shown as a vertical line and the intersection between the line and the curve gives the volume of the enclosed surface at the given level.

### 7.3 Rotationally averaged power spectrum [i](#)



\*Reported resolution corresponds to spatial frequency of  $0.333 \text{\AA}^{-1}$



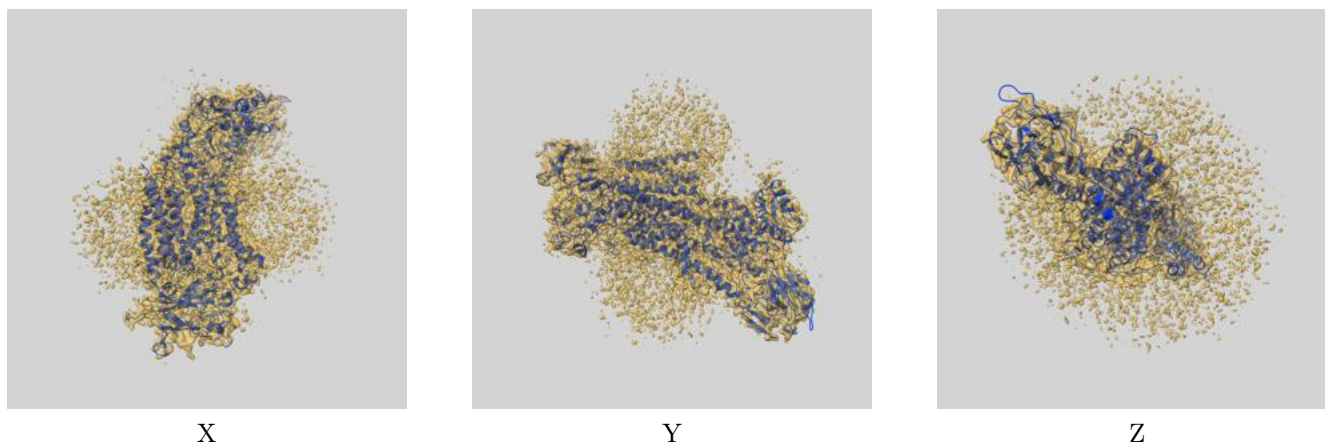
## 8 Fourier-Shell correlation

This section was not generated. No FSC curve or half-maps provided.

## 9 Map-model fit [i](#)

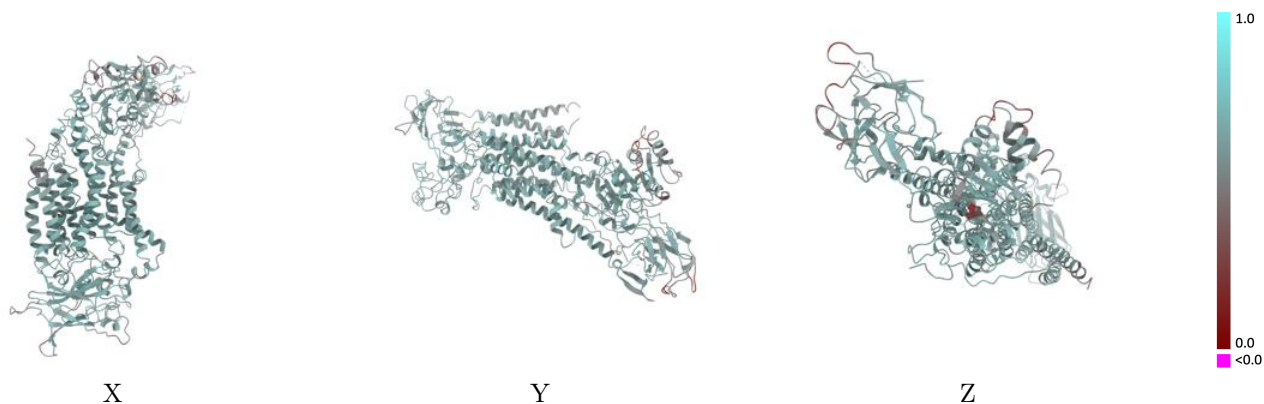
This section contains information regarding the fit between EMDB map EMD-30168 and PDB model 7BSV. Per-residue inclusion information can be found in section 3 on page 7.

### 9.1 Map-model overlay [i](#)



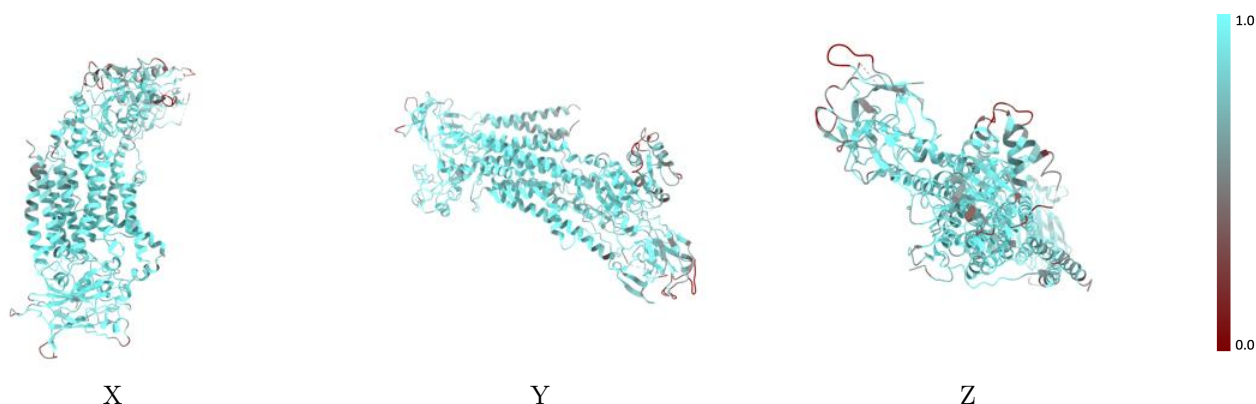
The images above show the 3D surface view of the map at the recommended contour level 0.0158 at 50% transparency in yellow overlaid with a ribbon representation of the model coloured in blue. These images allow for the visual assessment of the quality of fit between the atomic model and the map.

## 9.2 Q-score mapped to coordinate model [i](#)



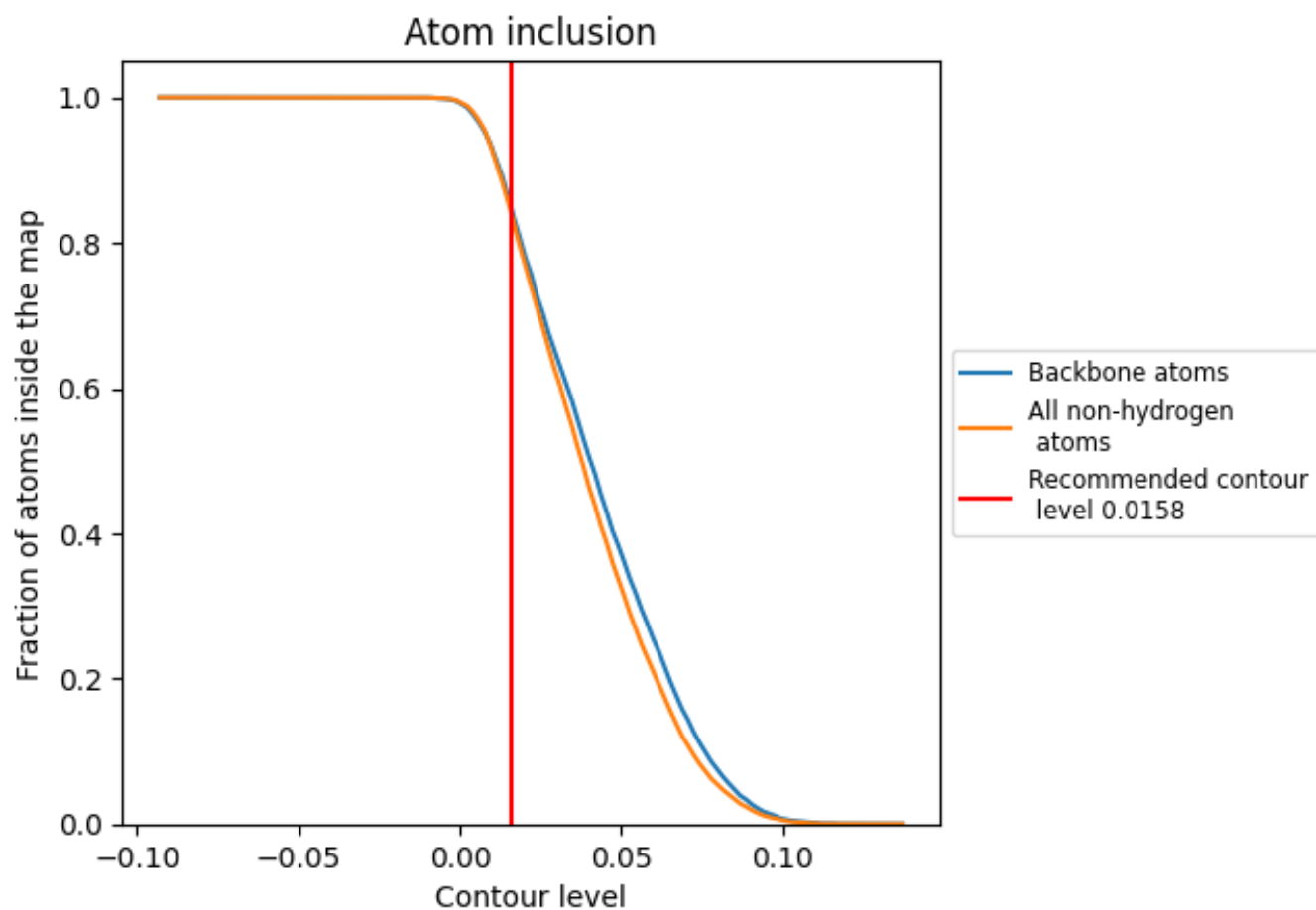
The images above show the model with each residue coloured according to its Q-score. This shows their resolvability in the map with higher Q-score values reflecting better resolvability. Please note: Q-score is calculating the resolvability of atoms, and thus high values are only expected at resolutions at which atoms can be resolved. Low Q-score values may therefore be expected for many entries.

## 9.3 Atom inclusion mapped to coordinate model [i](#)



The images above show the model with each residue coloured according to its atom inclusion. This shows to what extent they are inside the map at the recommended contour level (0.0158).









## 9.4 Atom inclusion [i](#)



At the recommended contour level, 85% of all backbone atoms, 84% of all non-hydrogen atoms, are inside the map.

## 9.5 Map-model fit summary

The table lists the average atom inclusion at the recommended contour level (0.0158) and Q-score for the entire model and for each chain.

Chain	Atom inclusion	Q-score
All	 0.8437	 0.5850
A	 0.8398	 0.5870
B	 0.8800	 0.5650
C	 0.8560	 0.5830

