



# Full wwPDB X-ray Structure Validation Report ⓘ

Dec 12, 2023 – 06:08 pm GMT

PDB ID : 4BKJ  
Title : Crystal structure of the human DDR1 kinase domain in complex with imatinib  
Authors : Canning, P.; Elkins, J.M.; Goubin, S.; Mahajan, P.; Krojer, T.; Vollmar, M.; von Delft, F.; Arrowsmith, C.H.; Edwards, A.M.; Bountra, C.; Bullock, A.  
Deposited on : 2013-04-25  
Resolution : 1.70 Å(reported)

This is a Full wwPDB X-ray Structure Validation Report for a publicly released PDB entry.

We welcome your comments at [validation@mail.wwpdb.org](mailto:validation@mail.wwpdb.org)

A user guide is available at

<https://www.wwpdb.org/validation/2017/XrayValidationReportHelp>

with specific help available everywhere you see the ⓘ symbol.

The types of validation reports are described at

<http://www.wwpdb.org/validation/2017/FAQs#types>.

---

The following versions of software and data (see [references ⓘ](#)) were used in the production of this report:

MolProbity : 4.02b-467  
Mogul : 1.8.4, CSD as541be (2020)  
Xtriage (Phenix) : 1.13  
EDS : 2.36  
buster-report : 1.1.7 (2018)  
Percentile statistics : 20191225.v01 (using entries in the PDB archive December 25th 2019)  
Refmac : 5.8.0158  
CCP4 : 7.0.044 (Gargrove)  
Ideal geometry (proteins) : Engh & Huber (2001)  
Ideal geometry (DNA, RNA) : Parkinson et al. (1996)  
Validation Pipeline (wwPDB-VP) : 2.36

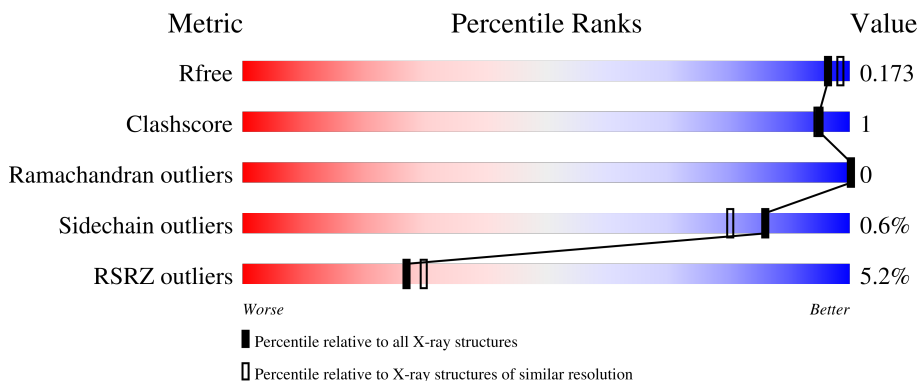
# 1 Overall quality at a glance

The following experimental techniques were used to determine the structure:

*X-RAY DIFFRACTION*

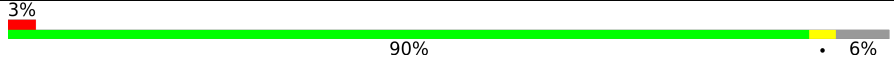
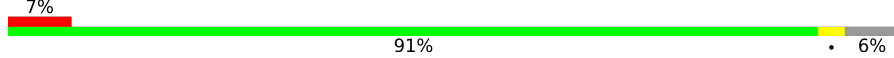
The reported resolution of this entry is 1.70 Å.

Percentile scores (ranging between 0-100) for global validation metrics of the entry are shown in the following graphic. The table shows the number of entries on which the scores are based.



Metric	Whole archive (#Entries)	Similar resolution (#Entries, resolution range(Å))
$R_{free}$	130704	4298 (1.70-1.70)
Clashscore	141614	4695 (1.70-1.70)
Ramachandran outliers	138981	4610 (1.70-1.70)
Sidechain outliers	138945	4610 (1.70-1.70)
RSRZ outliers	127900	4222 (1.70-1.70)

The table below summarises the geometric issues observed across the polymeric chains and their fit to the electron density. The red, orange, yellow and green segments of the lower bar indicate the fraction of residues that contain outliers for  $\geq 3$ , 2, 1 and 0 types of geometric quality criteria respectively. A grey segment represents the fraction of residues that are not modelled. The numeric value for each fraction is indicated below the corresponding segment, with a dot representing fractions  $\leq 5\%$ . The upper red bar (where present) indicates the fraction of residues that have poor fit to the electron density. The numeric value is given above the bar.

Mol	Chain	Length	Quality of chain
1	A	315	 3% 90% 6%
1	B	315	 7% 91% 6%

## 2 Entry composition i

There are 4 unique types of molecules in this entry. The entry contains 5239 atoms, of which 0 are hydrogens and 0 are deuteriums.

In the tables below, the ZeroOcc column contains the number of atoms modelled with zero occupancy, the AltConf column contains the number of residues with at least one atom in alternate conformation and the Trace column contains the number of residues modelled with at most 2 atoms.

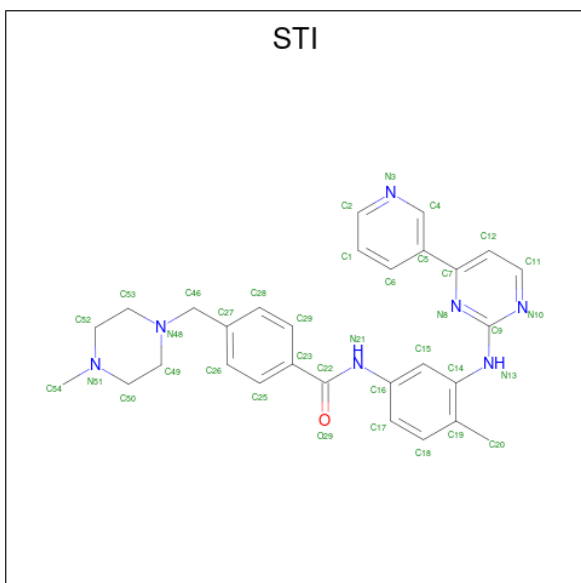
- Molecule 1 is a protein called EPITHELIAL DISCOIDIN DOMAIN-CONTAINING RECEPTOR 1.

Mol	Chain	Residues	Atoms					ZeroOcc	AltConf	Trace
			Total	C	N	O	S			
1	A	295	2359	1517	403	418	21	0	9	0
1	B	297	2355	1506	404	426	19	0	4	0

There are 4 discrepancies between the modelled and reference sequences:

Chain	Residue	Modelled	Actual	Comment	Reference
A	599	SER	-	expression tag	UNP Q08345
A	600	MET	-	expression tag	UNP Q08345
B	599	SER	-	expression tag	UNP Q08345
B	600	MET	-	expression tag	UNP Q08345

- Molecule 2 is 4-(4-METHYL-PIPERAZIN-1-YLMETHYL)-N-[4-METHYL-3-(4-PYRIDIN-3-YL-PYRIMIDIN-2-YLAMINO)-PHENYL]-BENZAMIDE (three-letter code: STI) (formula: C<sub>29</sub>H<sub>31</sub>N<sub>7</sub>O).



Mol	Chain	Residues	Atoms				ZeroOcc	AltConf
2	A	1	Total	C	N	O	0	0
			37	29	7	1		
2	B	1	Total	C	N	O	0	0
			37	29	7	1		

- Molecule 3 is 1,2-ETHANEDIOL (three-letter code: EDO) (formula: C<sub>2</sub>H<sub>6</sub>O<sub>2</sub>).



Mol	Chain	Residues	Atoms			ZeroOcc	AltConf
3	A	1	Total	C	O	0	0
			4	2	2		
3	A	1	Total	C	O	0	0
			4	2	2		
3	A	1	Total	C	O	0	0
			4	2	2		
3	A	1	Total	C	O	0	0
			4	2	2		
3	A	1	Total	C	O	0	0
			4	2	2		
3	A	1	Total	C	O	0	0
			4	2	2		
3	A	1	Total	C	O	0	0
			4	2	2		
3	A	1	Total	C	O	0	0
			4	2	2		

*Continued on next page...*

*Continued from previous page...*

Mol	Chain	Residues	Atoms	ZeroOcc	AltConf
3	B	1	Total C O 4 2 2	0	0
3	B	1	Total C O 4 2 2	0	0
3	B	1	Total C O 4 2 2	0	0
3	B	1	Total C O 4 2 2	0	0
3	B	1	Total C O 4 2 2	0	0
3	B	1	Total C O 4 2 2	0	0
3	B	1	Total C O 4 2 2	0	0
3	B	1	Total C O 4 2 2	0	0
3	B	1	Total C O 4 2 2	0	0

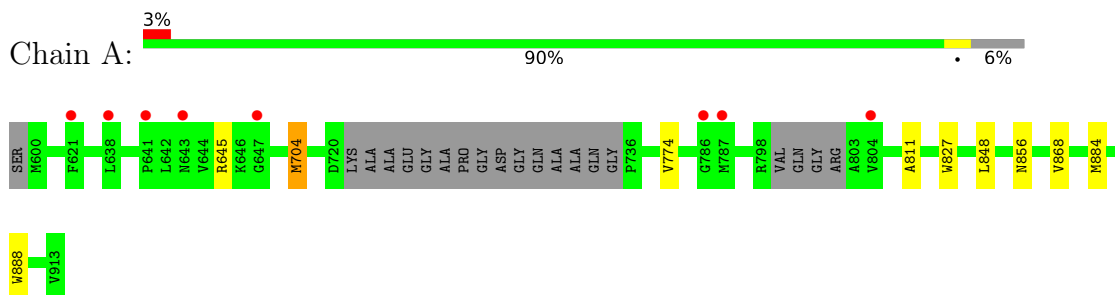
- Molecule 4 is water.

Mol	Chain	Residues	Atoms	ZeroOcc	AltConf
4	A	211	Total O 211 211	0	0
4	B	164	Total O 164 164	0	0

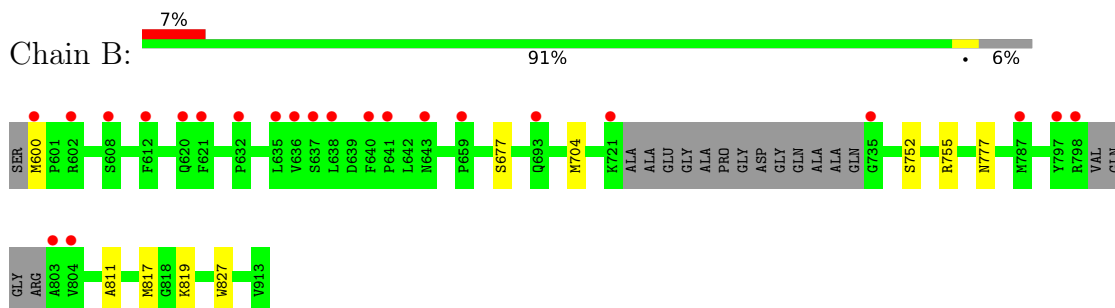
### 3 Residue-property plots [i](#)

These plots are drawn for all protein, RNA, DNA and oligosaccharide chains in the entry. The first graphic for a chain summarises the proportions of the various outlier classes displayed in the second graphic. The second graphic shows the sequence view annotated by issues in geometry and electron density. Residues are color-coded according to the number of geometric quality criteria for which they contain at least one outlier: green = 0, yellow = 1, orange = 2 and red = 3 or more. A red dot above a residue indicates a poor fit to the electron density ( $RSRZ > 2$ ). Stretches of 2 or more consecutive residues without any outlier are shown as a green connector. Residues present in the sample, but not in the model, are shown in grey.

- Molecule 1: EPITHELIAL DISCOIDIN DOMAIN-CONTAINING RECEPTOR 1



- Molecule 1: EPITHELIAL DISCOIDIN DOMAIN-CONTAINING RECEPTOR 1



## 4 Data and refinement statistics i

Property	Value	Source
Space group	P 21 21 21	Depositor
Cell constants a, b, c, $\alpha$ , $\beta$ , $\gamma$	60.07Å 60.07Å 180.57Å 90.00° 90.00° 90.00°	Depositor
Resolution (Å)	45.14 – 1.70 45.14 – 1.70	Depositor EDS
% Data completeness (in resolution range)	99.9 (45.14-1.70) 99.9 (45.14-1.70)	Depositor EDS
$R_{merge}$	0.08	Depositor
$R_{sym}$	(Not available)	Depositor
$\langle I/\sigma(I) \rangle$ <sup>1</sup>	2.30 (at 1.70Å)	Xtriage
Refinement program	REFMAC 5.7.0032	Depositor
R, $R_{free}$	0.156 , 0.176 0.156 , 0.173	Depositor DCC
$R_{free}$ test set	3670 reflections (5.04%)	wwPDB-VP
Wilson B-factor (Å <sup>2</sup> )	18.6	Xtriage
Anisotropy	0.532	Xtriage
Bulk solvent $k_{sol}$ (e/Å <sup>3</sup> ), $B_{sol}$ (Å <sup>2</sup> )	0.34 , 29.2	EDS
L-test for twinning <sup>2</sup>	$\langle  L  \rangle = 0.38$ , $\langle L^2 \rangle = 0.20$	Xtriage
Estimated twinning fraction	0.280 for k,h,-l	Xtriage
Reported twinning fraction	0.712 for H, K, L 0.288 for K, H, -L	Depositor
Outliers	0 of 72761 reflections	Xtriage
$F_o, F_c$ correlation	0.96	EDS
Total number of atoms	5239	wwPDB-VP
Average B, all atoms (Å <sup>2</sup> )	25.0	wwPDB-VP

Xtriage's analysis on translational NCS is as follows: *The largest off-origin peak in the Patterson function is 3.48% of the height of the origin peak. No significant pseudotranslation is detected.*

<sup>1</sup>Intensities estimated from amplitudes.

<sup>2</sup>Theoretical values of  $\langle |L| \rangle$ ,  $\langle L^2 \rangle$  for acentric reflections are 0.5, 0.333 respectively for untwinned datasets, and 0.375, 0.2 for perfectly twinned datasets.

## 5 Model quality

### 5.1 Standard geometry

Bond lengths and bond angles in the following residue types are not validated in this section: EDO, STI

The Z score for a bond length (or angle) is the number of standard deviations the observed value is removed from the expected value. A bond length (or angle) with  $|Z| > 5$  is considered an outlier worth inspection. RMSZ is the root-mean-square of all Z scores of the bond lengths (or angles).

Mol	Chain	Bond lengths		Bond angles	
		RMSZ	# Z  >5	RMSZ	# Z  >5
1	A	0.39	0/2440	0.62	0/3308
1	B	0.38	0/2421	0.61	0/3284
All	All	0.39	0/4861	0.62	0/6592

There are no bond length outliers.

There are no bond angle outliers.

There are no chirality outliers.

There are no planarity outliers.

### 5.2 Too-close contacts

In the following table, the Non-H and H(model) columns list the number of non-hydrogen atoms and hydrogen atoms in the chain respectively. The H(added) column lists the number of hydrogen atoms added and optimized by MolProbity. The Clashes column lists the number of clashes within the asymmetric unit, whereas Symm-Clashes lists symmetry-related clashes.

Mol	Chain	Non-H	H(model)	H(added)	Clashes	Symm-Clashes
1	A	2359	0	2324	5	1
1	B	2355	0	2293	5	0
2	A	37	0	31	1	0
2	B	37	0	31	1	0
3	A	40	0	60	0	0
3	B	36	0	54	1	0
4	A	211	0	0	0	1
4	B	164	0	0	1	0
All	All	5239	0	4793	12	1

The all-atom clashscore is defined as the number of clashes found per 1000 atoms (including hydrogen atoms). The all-atom clashscore for this structure is 1.



All (12) close contacts within the same asymmetric unit are listed below, sorted by their clash magnitude.

Atom-1	Atom-2	Interatomic distance (Å)	Clash overlap (Å)
1:A:704[B]:MET:HG3	1:A:774:VAL:O	1.94	0.67
1:B:777:ASN:HB2	4:B:2079:HOH:O	2.10	0.50
1:B:752:SER:OG	1:B:755[B]:ARG:NH2	2.49	0.46
1:A:884[B]:MET:HG2	1:A:888:TRP:CH2	2.52	0.45
2:A:1000:STI:H151	2:A:1000:STI:O29	2.16	0.44
1:B:600:MET:CB	1:B:677:SER:HB2	2.48	0.44
1:A:856:ASN:CG	1:A:868:VAL:HG12	2.38	0.44
1:B:819:LYS:HA	3:B:1008:EDO:H12	1.99	0.43
2:B:1000:STI:H151	2:B:1000:STI:O29	2.19	0.43
1:A:848:LEU:HD11	1:A:868:VAL:HG11	2.01	0.43
1:A:811:ALA:HA	1:A:827:TRP:CE2	2.55	0.42
1:B:811:ALA:HA	1:B:827:TRP:CE2	2.55	0.41

All (1) symmetry-related close contacts are listed below. The label for Atom-2 includes the symmetry operator and encoded unit-cell translations to be applied.

Atom-1	Atom-2	Interatomic distance (Å)	Clash overlap (Å)
1:A:645:ARG:NH2	4:A:2002:HOH:O[3_455]	2.00	0.20

## 5.3 Torsion angles [i](#)

### 5.3.1 Protein backbone [i](#)

In the following table, the Percentiles column shows the percent Ramachandran outliers of the chain as a percentile score with respect to all X-ray entries followed by that with respect to entries of similar resolution.

The Analysed column shows the number of residues for which the backbone conformation was analysed, and the total number of residues.

Mol	Chain	Analysed	Favoured	Allowed	Outliers	Percentiles	
1	A	298/315 (95%)	294 (99%)	4 (1%)	0	100	100
1	B	295/315 (94%)	291 (99%)	4 (1%)	0	100	100
All	All	593/630 (94%)	585 (99%)	8 (1%)	0	100	100

There are no Ramachandran outliers to report.

### 5.3.2 Protein sidechains [i](#)

In the following table, the Percentiles column shows the percent sidechain outliers of the chain as a percentile score with respect to all X-ray entries followed by that with respect to entries of similar resolution.

The Analysed column shows the number of residues for which the sidechain conformation was analysed, and the total number of residues.

Mol	Chain	Analysed	Rotameric	Outliers	Percentiles	
1	A	251/269 (93%)	249 (99%)	2 (1%)	81	74
1	B	250/269 (93%)	248 (99%)	2 (1%)	81	74
All	All	501/538 (93%)	497 (99%)	4 (1%)	86	74

All (4) residues with a non-rotameric sidechain are listed below:

Mol	Chain	Res	Type
1	A	704[A]	MET
1	A	704[B]	MET
1	B	704	MET
1	B	817	MET

Sometimes sidechains can be flipped to improve hydrogen bonding and reduce clashes. There are no such sidechains identified.

### 5.3.3 RNA [i](#)

There are no RNA molecules in this entry.

## 5.4 Non-standard residues in protein, DNA, RNA chains [i](#)

There are no non-standard protein/DNA/RNA residues in this entry.

## 5.5 Carbohydrates [i](#)

There are no monosaccharides in this entry.

## 5.6 Ligand geometry [i](#)

21 ligands are modelled in this entry.

In the following table, the Counts columns list the number of bonds (or angles) for which Mogul statistics could be retrieved, the number of bonds (or angles) that are observed in the model and the number of bonds (or angles) that are defined in the Chemical Component Dictionary. The Link column lists molecule types, if any, to which the group is linked. The Z score for a bond length (or angle) is the number of standard deviations the observed value is removed from the expected value. A bond length (or angle) with  $|Z| > 2$  is considered an outlier worth inspection. RMSZ is the root-mean-square of all Z scores of the bond lengths (or angles).

Mol	Type	Chain	Res	Link	Bond lengths			Bond angles		
					Counts	RMSZ	# Z  > 2	Counts	RMSZ	# Z  > 2
3	EDO	A	1005	-	3,3,3	0.45	0	2,2,2	0.31	0
3	EDO	B	1003	-	3,3,3	0.49	0	2,2,2	0.09	0
3	EDO	A	1007	-	3,3,3	0.45	0	2,2,2	0.34	0
3	EDO	A	1008	-	3,3,3	0.42	0	2,2,2	0.48	0
3	EDO	B	1007	-	3,3,3	0.43	0	2,2,2	0.21	0
3	EDO	A	1006	-	3,3,3	0.38	0	2,2,2	0.09	0
3	EDO	A	1003	-	3,3,3	0.40	0	2,2,2	0.26	0
3	EDO	A	1002	-	3,3,3	0.40	0	2,2,2	0.42	0
2	STI	B	1000	-	40,41,41	1.26	3 (7%)	51,56,56	1.84	11 (21%)
3	EDO	B	1009	-	3,3,3	0.39	0	2,2,2	0.40	0
3	EDO	A	1010	-	3,3,3	0.45	0	2,2,2	0.29	0
3	EDO	B	1004	-	3,3,3	0.40	0	2,2,2	0.35	0
3	EDO	A	1009	-	3,3,3	0.45	0	2,2,2	0.30	0
3	EDO	B	1005	-	3,3,3	0.40	0	2,2,2	0.35	0
3	EDO	B	1001	-	3,3,3	0.25	0	2,2,2	0.48	0
2	STI	A	1000	-	40,41,41	1.25	3 (7%)	51,56,56	1.87	16 (31%)
3	EDO	A	1004	-	3,3,3	0.59	0	2,2,2	0.31	0
3	EDO	B	1002	-	3,3,3	0.43	0	2,2,2	0.24	0
3	EDO	A	1001	-	3,3,3	0.33	0	2,2,2	0.35	0
3	EDO	B	1006	-	3,3,3	0.49	0	2,2,2	0.24	0
3	EDO	B	1008	-	3,3,3	0.41	0	2,2,2	0.34	0

In the following table, the Chirals column lists the number of chiral outliers, the number of chiral centers analysed, the number of these observed in the model and the number defined in the Chemical Component Dictionary. Similar counts are reported in the Torsion and Rings columns. '-' means no outliers of that kind were identified.

Mol	Type	Chain	Res	Link	Chirals	Torsions	Rings
3	EDO	A	1005	-	-	1/1/1/1	-
3	EDO	B	1003	-	-	1/1/1/1	-
3	EDO	A	1007	-	-	1/1/1/1	-
3	EDO	A	1008	-	-	0/1/1/1	-
3	EDO	B	1007	-	-	0/1/1/1	-
3	EDO	A	1006	-	-	0/1/1/1	-
3	EDO	A	1003	-	-	0/1/1/1	-

*Continued on next page...*

Continued from previous page...

Mol	Type	Chain	Res	Link	Chirals	Torsions	Rings
3	EDO	A	1002	-	-	1/1/1/1	-
2	STI	B	1000	-	-	2/16/30/30	0/5/5/5
3	EDO	B	1009	-	-	1/1/1/1	-
3	EDO	A	1010	-	-	1/1/1/1	-
3	EDO	B	1004	-	-	0/1/1/1	-
3	EDO	A	1009	-	-	1/1/1/1	-
3	EDO	B	1005	-	-	0/1/1/1	-
3	EDO	B	1001	-	-	0/1/1/1	-
2	STI	A	1000	-	-	2/16/30/30	0/5/5/5
3	EDO	A	1004	-	-	0/1/1/1	-
3	EDO	B	1002	-	-	0/1/1/1	-
3	EDO	A	1001	-	-	0/1/1/1	-
3	EDO	B	1006	-	-	0/1/1/1	-
3	EDO	B	1008	-	-	1/1/1/1	-

All (6) bond length outliers are listed below:

Mol	Chain	Res	Type	Atoms	Z	Observed(Å)	Ideal(Å)
2	B	1000	STI	C22-N21	4.12	1.46	1.35
2	B	1000	STI	C9-N13	3.61	1.43	1.36
2	A	1000	STI	C22-N21	3.35	1.44	1.35
2	A	1000	STI	C12-C11	2.86	1.40	1.36
2	B	1000	STI	C12-C11	2.83	1.40	1.36
2	A	1000	STI	C9-N13	2.64	1.41	1.36

All (27) bond angle outliers are listed below:

Mol	Chain	Res	Type	Atoms	Z	Observed(°)	Ideal(°)
2	B	1000	STI	C46-N48-C53	4.54	121.17	111.06
2	B	1000	STI	C11-N10-C9	4.45	119.39	115.45
2	B	1000	STI	C54-N51-C50	4.30	117.09	110.66
2	A	1000	STI	C49-C50-N51	4.07	115.40	110.80
2	A	1000	STI	C18-C19-C14	3.91	121.13	117.44
2	B	1000	STI	C12-C11-N10	-3.87	120.00	123.81
2	A	1000	STI	C9-N8-C7	3.86	121.88	115.60
2	A	1000	STI	C12-C7-N8	-3.73	116.56	121.46
2	B	1000	STI	C54-N51-C52	3.72	116.23	110.66
2	B	1000	STI	N10-C9-N8	-3.56	123.08	126.52
2	B	1000	STI	C49-C50-N51	3.54	114.81	110.80
2	A	1000	STI	C12-C11-N10	-3.43	120.43	123.81
2	A	1000	STI	C46-N48-C53	3.10	117.96	111.06
2	B	1000	STI	C9-N8-C7	3.05	120.57	115.60

Continued on next page...

Continued from previous page...

Mol	Chain	Res	Type	Atoms	Z	Observed(°)	Ideal(°)
2	A	1000	STI	C28-C27-C26	2.86	122.66	118.17
2	A	1000	STI	C54-N51-C52	2.66	114.64	110.66
2	A	1000	STI	C54-N51-C50	2.52	114.43	110.66
2	A	1000	STI	C28-C29-C23	-2.47	117.91	120.78
2	A	1000	STI	C14-N13-C9	-2.43	122.28	129.60
2	B	1000	STI	C14-N13-C9	-2.38	122.43	129.60
2	A	1000	STI	C11-N10-C9	2.36	117.55	115.45
2	B	1000	STI	C20-C19-C14	-2.35	118.60	121.25
2	B	1000	STI	C12-C7-N8	-2.21	118.55	121.46
2	A	1000	STI	N10-C9-N8	-2.20	124.39	126.52
2	A	1000	STI	C17-C18-C19	-2.17	118.67	121.97
2	A	1000	STI	C25-C26-C27	-2.13	118.10	121.03
2	A	1000	STI	C2-N3-C4	2.02	121.57	117.25

There are no chirality outliers.

All (12) torsion outliers are listed below:

Mol	Chain	Res	Type	Atoms
2	A	1000	STI	C15-C14-N13-C9
2	B	1000	STI	C15-C14-N13-C9
3	A	1005	EDO	O1-C1-C2-O2
3	A	1010	EDO	O1-C1-C2-O2
3	B	1009	EDO	O1-C1-C2-O2
3	A	1007	EDO	O1-C1-C2-O2
3	B	1008	EDO	O1-C1-C2-O2
2	B	1000	STI	C19-C14-N13-C9
3	B	1003	EDO	O1-C1-C2-O2
3	A	1002	EDO	O1-C1-C2-O2
3	A	1009	EDO	O1-C1-C2-O2
2	A	1000	STI	C19-C14-N13-C9

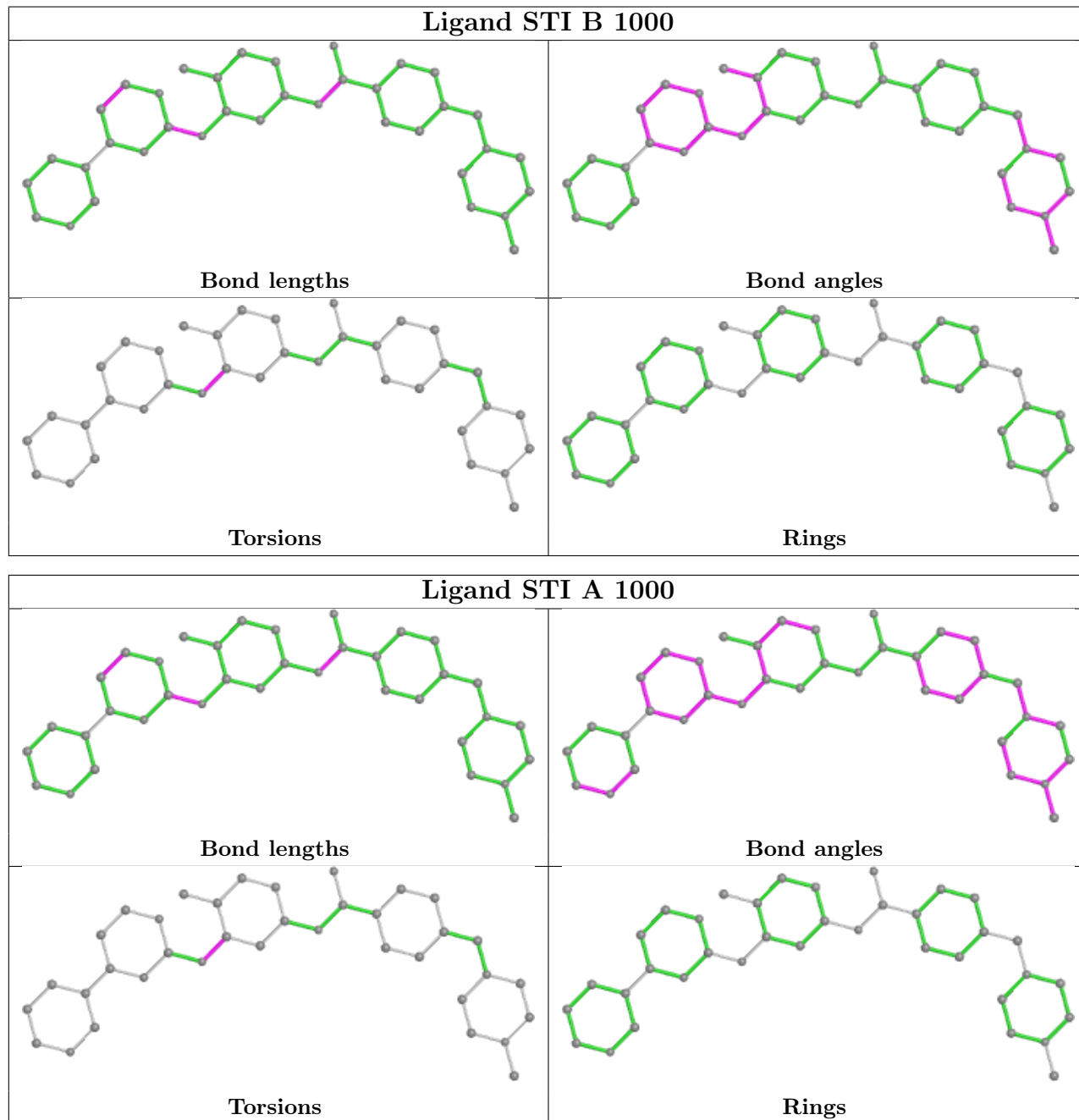
There are no ring outliers.

3 monomers are involved in 3 short contacts:

Mol	Chain	Res	Type	Clashes	Symm-Clashes
2	B	1000	STI	1	0
2	A	1000	STI	1	0
3	B	1008	EDO	1	0

The following is a two-dimensional graphical depiction of Mogul quality analysis of bond lengths, bond angles, torsion angles, and ring geometry for all instances of the Ligand of Interest. In

addition, ligands with molecular weight  $> 250$  and outliers as shown on the validation Tables will also be included. For torsion angles, if less than 5% of the Mogul distribution of torsion angles is within 10 degrees of the torsion angle in question, then that torsion angle is considered an outlier. Any bond that is central to one or more torsion angles identified as an outlier by Mogul will be highlighted in the graph. For rings, the root-mean-square deviation (RMSD) between the ring in question and similar rings identified by Mogul is calculated over all ring torsion angles. If the average RMSD is greater than 60 degrees and the minimal RMSD between the ring in question and any Mogul-identified rings is also greater than 60 degrees, then that ring is considered an outlier. The outliers are highlighted in purple. The color gray indicates Mogul did not find sufficient equivalents in the CSD to analyse the geometry.



## 5.7 Other polymers [i](#)

There are no such residues in this entry.

## 5.8 Polymer linkage issues [i](#)

There are no chain breaks in this entry.

## 6 Fit of model and data

### 6.1 Protein, DNA and RNA chains

In the following table, the column labelled ‘#RSRZ > 2’ contains the number (and percentage) of RSRZ outliers, followed by percent RSRZ outliers for the chain as percentile scores relative to all X-ray entries and entries of similar resolution. The OWAB column contains the minimum, median, 95<sup>th</sup> percentile and maximum values of the occupancy-weighted average B-factor per residue. The column labelled ‘Q < 0.9’ lists the number of (and percentage) of residues with an average occupancy less than 0.9.

Mol	Chain	Analysed	<RSRZ>	#RSRZ>2	OWAB(Å <sup>2</sup> )	Q<0.9
1	A	295/315 (93%)	-0.11	8 (2%) 54 58	11, 20, 44, 63	0
1	B	297/315 (94%)	0.12	23 (7%) 13 15	11, 22, 61, 81	0
All	All	592/630 (93%)	0.00	31 (5%) 27 30	11, 21, 55, 81	0

All (31) RSRZ outliers are listed below:

Mol	Chain	Res	Type	RSRZ
1	A	787	MET	5.6
1	B	659	PRO	4.6
1	B	641	PRO	4.4
1	A	647	GLY	4.3
1	B	643	ASN	4.0
1	B	621	PHE	3.8
1	B	803	ALA	3.5
1	B	787	MET	3.3
1	B	600	MET	3.2
1	B	640	PHE	3.2
1	A	786	GLY	3.1
1	B	798	ARG	3.0
1	B	735	GLY	2.9
1	B	636	VAL	2.7
1	A	638	LEU	2.7
1	B	804	VAL	2.6
1	B	602	ARG	2.5
1	B	612	PHE	2.5
1	A	621	PHE	2.5
1	B	693	GLN	2.5
1	A	804	VAL	2.5
1	B	797	TYR	2.4
1	B	632	PRO	2.4
1	A	643	ASN	2.4

*Continued on next page...*



*Continued from previous page...*

Mol	Chain	Res	Type	RSRZ
1	B	721	LYS	2.3
1	A	641	PRO	2.3
1	B	608	SER	2.3
1	B	620	GLN	2.2
1	B	635	LEU	2.2
1	B	637	SER	2.1
1	B	638	LEU	2.1

## 6.2 Non-standard residues in protein, DNA, RNA chains [i](#)

There are no non-standard protein/DNA/RNA residues in this entry.

## 6.3 Carbohydrates [i](#)

There are no monosaccharides in this entry.

## 6.4 Ligands [i](#)

In the following table, the Atoms column lists the number of modelled atoms in the group and the number defined in the chemical component dictionary. The B-factors column lists the minimum, median, 95<sup>th</sup> percentile and maximum values of B factors of atoms in the group. The column labelled 'Q< 0.9' lists the number of atoms with occupancy less than 0.9.

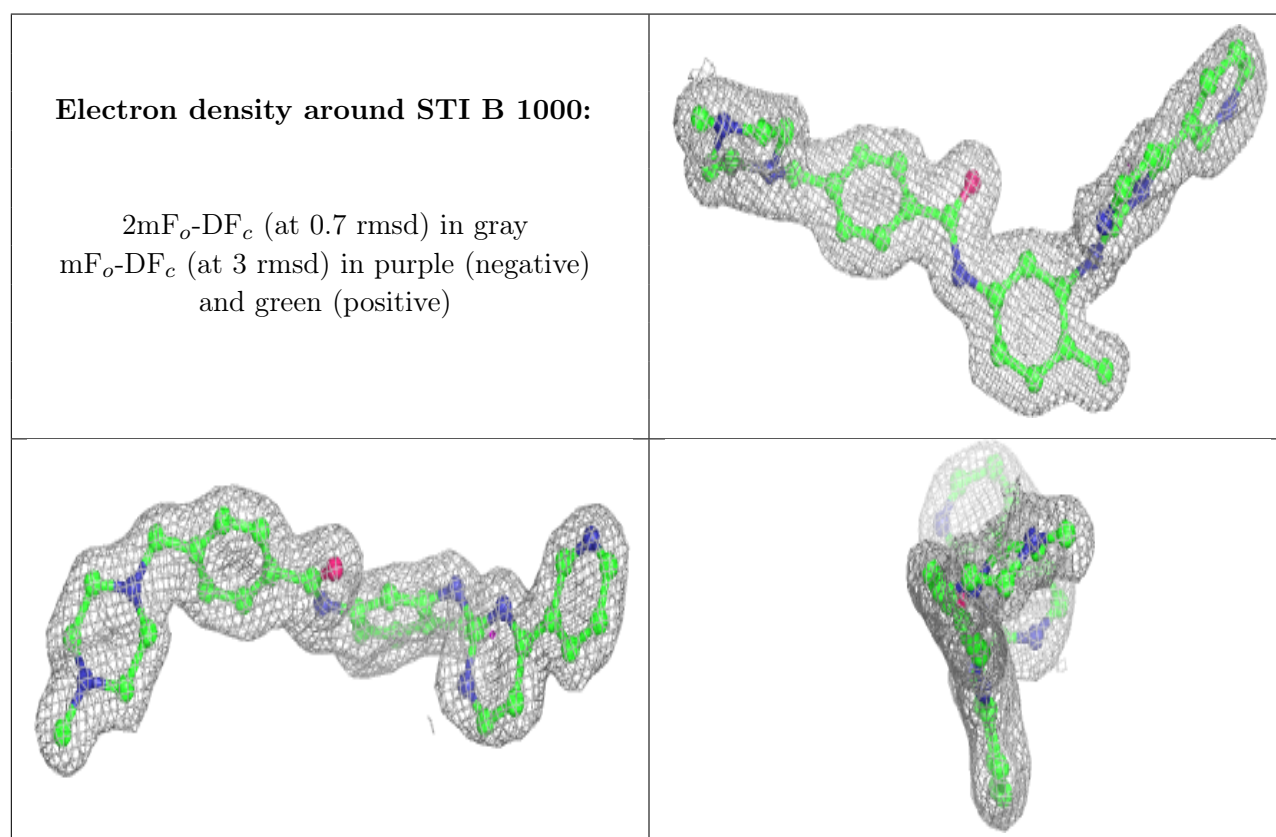
Mol	Type	Chain	Res	Atoms	RSCC	RSR	B-factors(Å <sup>2</sup> )	Q<0.9
3	EDO	A	1002	4/4	0.79	0.18	29,29,31,35	0
3	EDO	B	1002	4/4	0.80	0.21	25,25,29,29	0
3	EDO	A	1008	4/4	0.86	0.18	29,32,34,36	0
3	EDO	B	1007	4/4	0.87	0.13	19,22,23,27	0
3	EDO	A	1010	4/4	0.88	0.12	34,35,41,45	0
3	EDO	B	1009	4/4	0.88	0.12	27,33,37,42	0
3	EDO	B	1001	4/4	0.89	0.13	24,26,32,33	0
3	EDO	B	1008	4/4	0.90	0.19	26,29,35,41	0
3	EDO	A	1005	4/4	0.91	0.10	27,31,32,42	0
3	EDO	B	1005	4/4	0.92	0.12	24,27,27,31	0
3	EDO	B	1004	4/4	0.92	0.09	16,17,20,20	0
2	STI	B	1000	37/37	0.93	0.09	16,20,27,29	0
2	STI	A	1000	37/37	0.94	0.09	11,14,17,18	0
3	EDO	A	1009	4/4	0.94	0.12	23,30,31,40	0
3	EDO	A	1001	4/4	0.95	0.12	19,21,28,29	0
3	EDO	B	1006	4/4	0.96	0.09	25,25,30,31	0

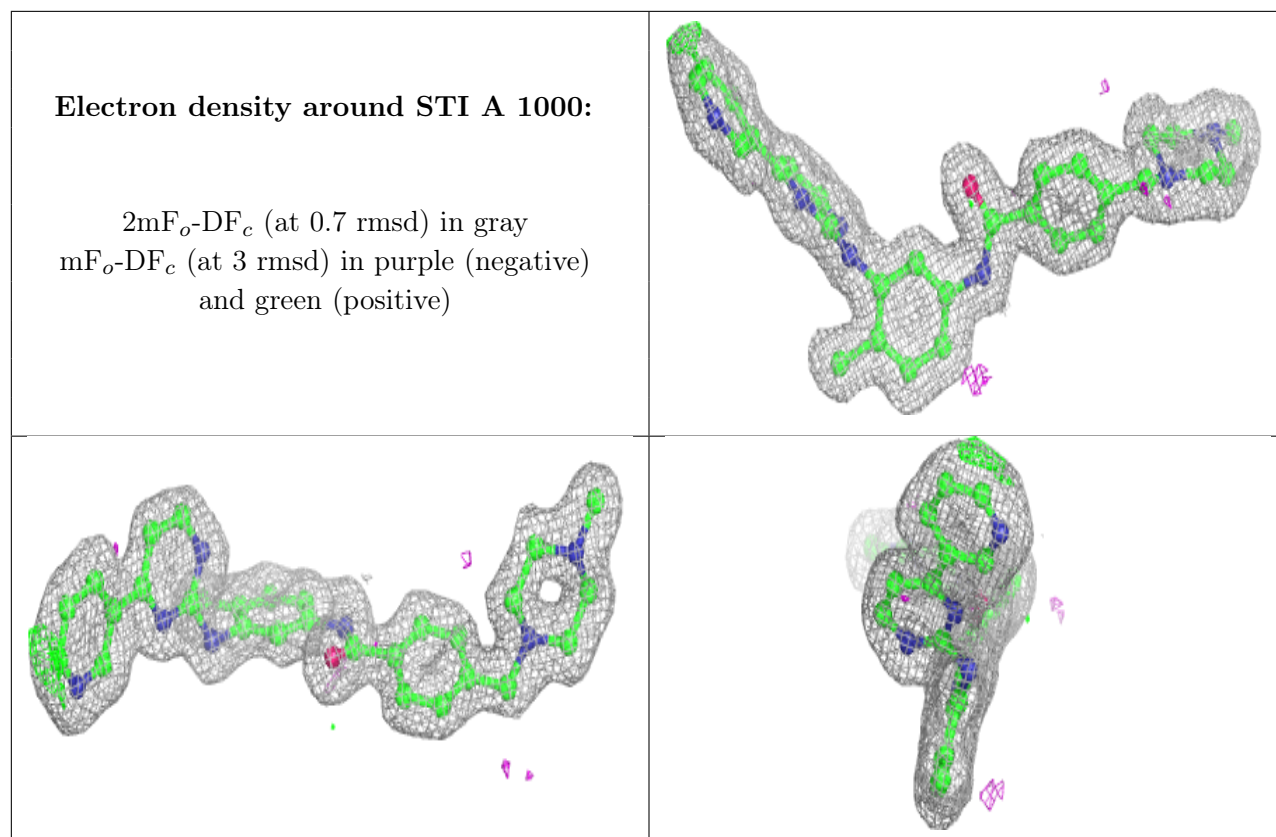
*Continued on next page...*

Continued from previous page...

Mol	Type	Chain	Res	Atoms	RSCC	RSR	B-factors( $\text{\AA}^2$ )	Q<0.9
3	EDO	B	1003	4/4	0.96	0.09	19,26,28,34	0
3	EDO	A	1006	4/4	0.96	0.08	21,23,30,36	0
3	EDO	A	1003	4/4	0.96	0.10	26,26,26,35	0
3	EDO	A	1004	4/4	0.97	0.07	15,16,19,19	0
3	EDO	A	1007	4/4	0.97	0.08	19,21,22,29	0

The following is a graphical depiction of the model fit to experimental electron density of all instances of the Ligand of Interest. In addition, ligands with molecular weight > 250 and outliers as shown on the geometry validation Tables will also be included. Each fit is shown from different orientation to approximate a three-dimensional view.





## 6.5 Other polymers [i](#)

There are no such residues in this entry.