



# Full wwPDB X-ray Structure Validation Report ⓘ

Aug 21, 2020 – 04:00 PM BST

PDB ID : 4BK1  
Title : Crystal structure of 3-hydroxybenzoate 6-hydroxylase uncovers lipid- assisted flavoprotein strategy for regioselective aromatic hydroxylation: H213S mutant in complex with 3-hydroxybenzoate  
Authors : Orru, R.; Montersino, S.; Barendregt, A.; Westphal, A.H.; van Duijn, E.; Mattevi, A.; van Berkel, W.J.H.  
Deposited on : 2013-04-21  
Resolution : 1.73 Å(reported)

This is a Full wwPDB X-ray Structure Validation Report for a publicly released PDB entry.

We welcome your comments at [validation@mail.wwpdb.org](mailto:validation@mail.wwpdb.org)

A user guide is available at

<https://www.wwpdb.org/validation/2017/XrayValidationReportHelp>

with specific help available everywhere you see the ⓘ symbol.

---

The following versions of software and data (see [references ⓘ](#)) were used in the production of this report:

MolProbity : 4.02b-467  
Mogul : 1.8.5 (274361), CSD as541be (2020)  
Xtriage (Phenix) : 1.13  
EDS : 2.13.1  
buster-report : 1.1.7 (2018)  
Percentile statistics : 20191225.v01 (using entries in the PDB archive December 25th 2019)  
Refmac : 5.8.0158  
CCP4 : 7.0.044 (Gargrove)  
Ideal geometry (proteins) : Engh & Huber (2001)  
Ideal geometry (DNA, RNA) : Parkinson et al. (1996)  
Validation Pipeline (wwPDB-VP) : 2.13.1

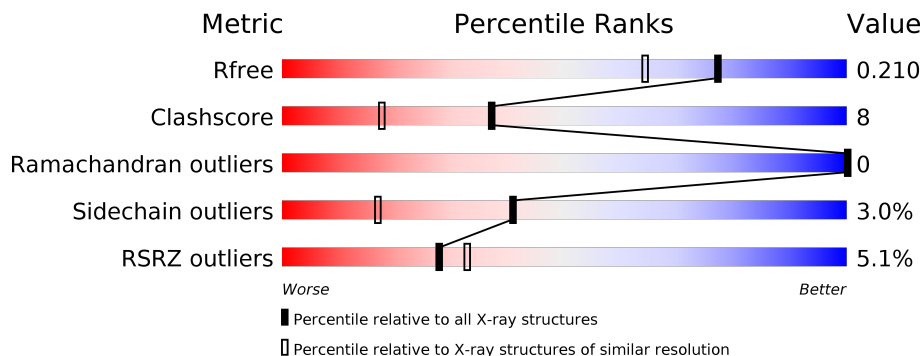
# 1 Overall quality at a glance

The following experimental techniques were used to determine the structure:

*X-RAY DIFFRACTION*

The reported resolution of this entry is 1.73 Å.

Percentile scores (ranging between 0-100) for global validation metrics of the entry are shown in the following graphic. The table shows the number of entries on which the scores are based.



Metric	Whole archive (#Entries)	Similar resolution (#Entries, resolution range(Å))
$R_{free}$	130704	3764 (1.76-1.72)
Clashscore	141614	3923 (1.76-1.72)
Ramachandran outliers	138981	3878 (1.76-1.72)
Sidechain outliers	138945	3878 (1.76-1.72)
RSRZ outliers	127900	3705 (1.76-1.72)

The table below summarises the geometric issues observed across the polymeric chains and their fit to the electron density. The red, orange, yellow and green segments on the lower bar indicate the fraction of residues that contain outliers for  $\geq 3$ , 2, 1 and 0 types of geometric quality criteria respectively. A grey segment represents the fraction of residues that are not modelled. The numeric value for each fraction is indicated below the corresponding segment, with a dot representing fractions  $\leq 5\%$ . The upper red bar (where present) indicates the fraction of residues that have poor fit to the electron density. The numeric value is given above the bar.

Mol	Chain	Length	Quality of chain
1	A	424	

## 2 Entry composition

There are 6 unique types of molecules in this entry. The entry contains 3527 atoms, of which 0 are hydrogens and 0 are deuteriums.

In the tables below, the ZeroOcc column contains the number of atoms modelled with zero occupancy, the AltConf column contains the number of residues with at least one atom in alternate conformation and the Trace column contains the number of residues modelled with at most 2 atoms.

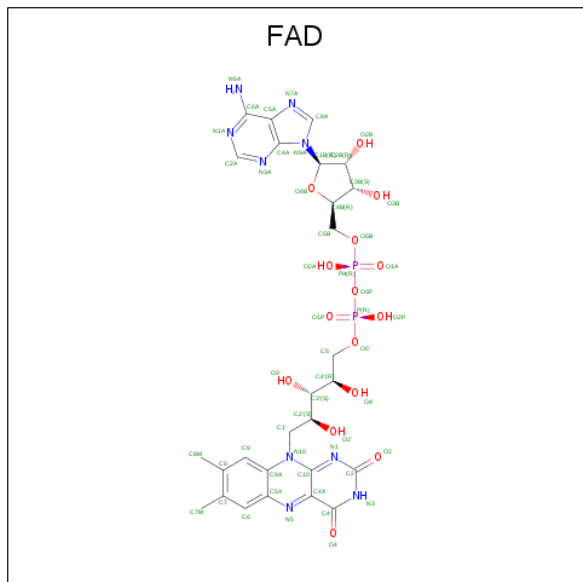
- Molecule 1 is a protein called PROBABLE SALICYLATE MONOOXYGENASE.

Mol	Chain	Residues	Atoms					ZeroOcc	AltConf	Trace
			Total	C	N	O	S			
1	A	389	3033	1906	537	579	11	0	2	0

There are 26 discrepancies between the modelled and reference sequences:

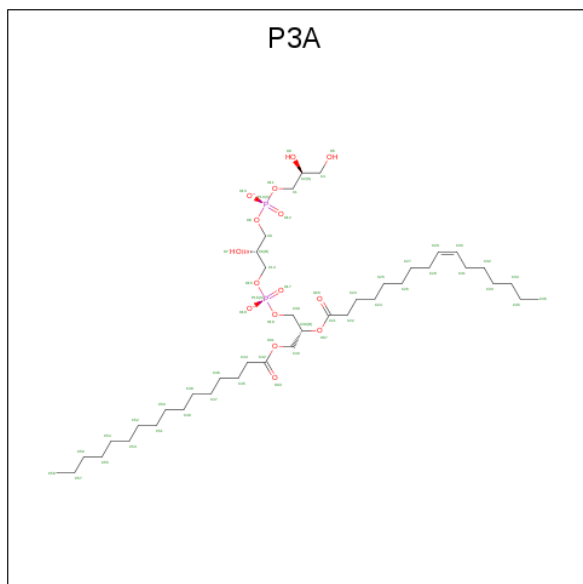
Chain	Residue	Modelled	Actual	Comment	Reference
A	400	LYS	-	expression tag	UNP Q0SFK6
A	401	LEU	-	expression tag	UNP Q0SFK6
A	402	GLY	-	expression tag	UNP Q0SFK6
A	403	PRO	-	expression tag	UNP Q0SFK6
A	404	GLU	-	expression tag	UNP Q0SFK6
A	405	GLN	-	expression tag	UNP Q0SFK6
A	406	LYS	-	expression tag	UNP Q0SFK6
A	407	LEU	-	expression tag	UNP Q0SFK6
A	408	ILE	-	expression tag	UNP Q0SFK6
A	409	SER	-	expression tag	UNP Q0SFK6
A	410	GLU	-	expression tag	UNP Q0SFK6
A	411	GLU	-	expression tag	UNP Q0SFK6
A	412	ASP	-	expression tag	UNP Q0SFK6
A	413	LEU	-	expression tag	UNP Q0SFK6
A	414	ASN	-	expression tag	UNP Q0SFK6
A	415	SER	-	expression tag	UNP Q0SFK6
A	416	ALA	-	expression tag	UNP Q0SFK6
A	417	VAL	-	expression tag	UNP Q0SFK6
A	418	ASP	-	expression tag	UNP Q0SFK6
A	419	HIS	-	expression tag	UNP Q0SFK6
A	420	HIS	-	expression tag	UNP Q0SFK6
A	421	HIS	-	expression tag	UNP Q0SFK6
A	422	HIS	-	expression tag	UNP Q0SFK6
A	423	HIS	-	expression tag	UNP Q0SFK6
A	424	HIS	-	expression tag	UNP Q0SFK6
A	213	SER	HIS	engineered mutation	UNP Q0SFK6

- Molecule 2 is FLAVIN-ADENINE DINUCLEOTIDE (three-letter code: FAD) (formula:  $C_{27}H_{33}N_9O_{15}P_2$ ).



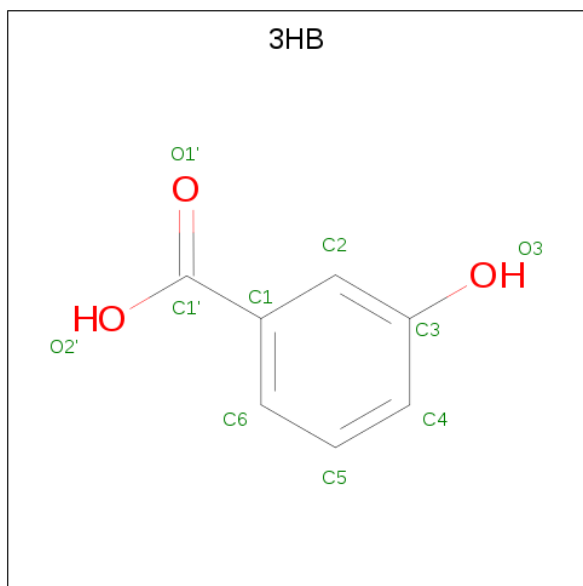
Mol	Chain	Residues	Atoms					ZeroOcc	AltConf
			Total	C	N	O	P		
2	A	1	53	27	9	15	2	0	0

- Molecule 3 is PHOSPHATIDYLGLYCEROL-PHOSPHOGLYCEROL (three-letter code: P3A) (formula:  $C_{41}H_{78}O_{15}P_2$ ).



Mol	Chain	Residues	Atoms				ZeroOcc	AltConf
			Total	C	O	P		
3	A	1	50	36	12	2	0	1

- Molecule 4 is 3-HYDROXYBENZOIC ACID (three-letter code: 3HB) (formula: C<sub>7</sub>H<sub>6</sub>O<sub>3</sub>).



Mol	Chain	Residues	Atoms		ZeroOcc	AltConf	
4	A	1	Total	C	O	0	1
			20	14	6		

- Molecule 5 is CHLORIDE ION (three-letter code: CL) (formula: Cl).

Mol	Chain	Residues	Atoms		ZeroOcc	AltConf
5	A	1	Total	Cl	0	0
			1	1		

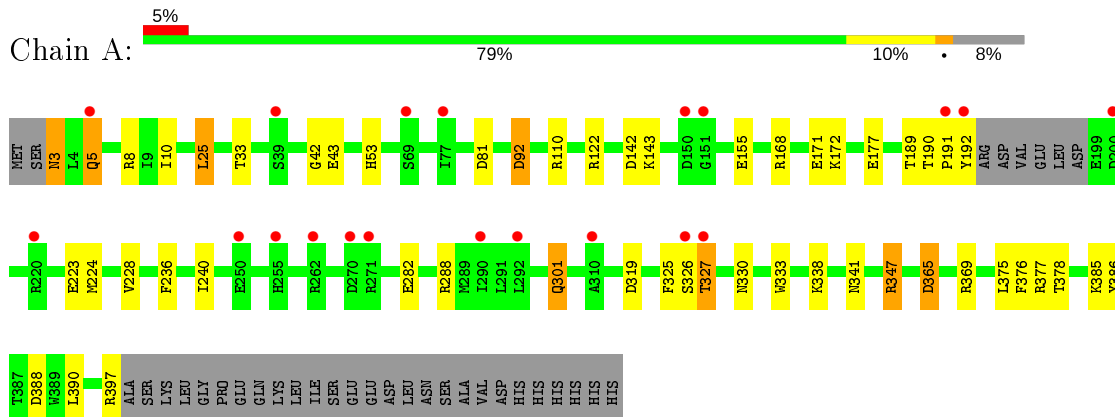
- Molecule 6 is water.

Mol	Chain	Residues	Atoms		ZeroOcc	AltConf
6	A	370	Total	O	0	0
			370	370		

### 3 Residue-property plots [i](#)

These plots are drawn for all protein, RNA, DNA and oligosaccharide chains in the entry. The first graphic for a chain summarises the proportions of the various outlier classes displayed in the second graphic. The second graphic shows the sequence view annotated by issues in geometry and electron density. Residues are color-coded according to the number of geometric quality criteria for which they contain at least one outlier: green = 0, yellow = 1, orange = 2 and red = 3 or more. A red dot above a residue indicates a poor fit to the electron density ( $RSRZ > 2$ ). Stretches of 2 or more consecutive residues without any outlier are shown as a green connector. Residues present in the sample, but not in the model, are shown in grey.

- Molecule 1: PROBABLE SALICYLATE MONOOXYGENASE



## 4 Data and refinement statistics i

Property	Value	Source
Space group	I 41 2 2	Depositor
Cell constants a, b, c, $\alpha$ , $\beta$ , $\gamma$	105.82Å 105.82Å 142.29Å 90.00° 90.00° 90.00°	Depositor
Resolution (Å)	84.91 – 1.73 33.50 – 1.73	Depositor EDS
% Data completeness (in resolution range)	96.9 (84.91-1.73) 97.0 (33.50-1.73)	Depositor EDS
$R_{merge}$	0.06	Depositor
$R_{sym}$	(Not available)	Depositor
$\langle I/\sigma(I) \rangle$ <sup>1</sup>	3.84 (at 1.73Å)	Xtrriage
Refinement program	REFMAC 5.8.0033	Depositor
R, $R_{free}$	0.158 , 0.201 0.172 , 0.210	Depositor DCC
$R_{free}$ test set	2058 reflections (5.03%)	wwPDB-VP
Wilson B-factor (Å <sup>2</sup> )	19.9	Xtrriage
Anisotropy	0.591	Xtrriage
Bulk solvent $k_{sol}$ (e/Å <sup>3</sup> ), $B_{sol}$ (Å <sup>2</sup> )	0.42 , 56.1	EDS
L-test for twinning <sup>2</sup>	$\langle  L  \rangle = 0.49$ , $\langle L^2 \rangle = 0.32$	Xtrriage
Estimated twinning fraction	0.016 for $-1/2^*h+1/2^*k-1/2^*l, 1/2^*h-1/2^*k-1/2^*l, -h-k$ 0.021 for $-1/2^*h-1/2^*k+1/2^*l, -1/2^*h-1/2^*k-1/2^*l, h-k$	Xtrriage
$F_o, F_c$ correlation	0.96	EDS
Total number of atoms	3527	wwPDB-VP
Average B, all atoms (Å <sup>2</sup> )	28.0	wwPDB-VP

Xtrriage's analysis on translational NCS is as follows: *The largest off-origin peak in the Patterson function is 4.88% of the height of the origin peak. No significant pseudotranslation is detected.*

<sup>1</sup>Intensities estimated from amplitudes.

<sup>2</sup>Theoretical values of  $\langle |L| \rangle$ ,  $\langle L^2 \rangle$  for acentric reflections are 0.5, 0.333 respectively for untwinned datasets, and 0.375, 0.2 for perfectly twinned datasets.

## 5 Model quality [i](#)

### 5.1 Standard geometry [i](#)

Bond lengths and bond angles in the following residue types are not validated in this section: 3HB, P3A, FAD, CL

The Z score for a bond length (or angle) is the number of standard deviations the observed value is removed from the expected value. A bond length (or angle) with  $|Z| > 5$  is considered an outlier worth inspection. RMSZ is the root-mean-square of all Z scores of the bond lengths (or angles).

Mol	Chain	Bond lengths		Bond angles	
		RMSZ	# Z  >5	RMSZ	# Z  >5
1	A	1.04	2/3109 (0.1%)	1.15	19/4219 (0.5%)

All (2) bond length outliers are listed below:

Mol	Chain	Res	Type	Atoms	Z	Observed(Å)	Ideal(Å)
1	A	377	ARG	CZ-NH1	6.30	1.41	1.33
1	A	377	ARG	CD-NE	-5.87	1.36	1.46

All (19) bond angle outliers are listed below:

Mol	Chain	Res	Type	Atoms	Z	Observed(°)	Ideal(°)
1	A	377	ARG	NE-CZ-NH2	-26.78	106.91	120.30
1	A	377	ARG	NE-CZ-NH1	16.31	128.45	120.30
1	A	369	ARG	NE-CZ-NH1	6.43	123.52	120.30
1	A	142	ASP	CB-CG-OD1	-6.33	112.60	118.30
1	A	347	ARG	NE-CZ-NH1	6.31	123.45	120.30
1	A	92	ASP	CB-CG-OD1	6.04	123.74	118.30
1	A	122	ARG	NE-CZ-NH2	-5.85	117.38	120.30
1	A	110	ARG	NE-CZ-NH2	5.68	123.14	120.30
1	A	365[A]	ASP	CB-CG-OD1	5.51	123.26	118.30
1	A	365[B]	ASP	CB-CG-OD1	5.51	123.26	118.30
1	A	81	ASP	CB-CG-OD1	5.50	123.25	118.30
1	A	288	ARG	NE-CZ-NH1	5.41	123.01	120.30
1	A	319	ASP	CB-CG-OD1	5.39	123.15	118.30
1	A	377	ARG	CB-CG-CD	-5.33	97.75	111.60
1	A	25	LEU	CB-CG-CD1	-5.30	101.98	111.00
1	A	110	ARG	NE-CZ-NH1	-5.29	117.65	120.30
1	A	376	PHE	CB-CG-CD1	5.28	124.50	120.80
1	A	388	ASP	CB-CG-OD2	-5.17	113.65	118.30
1	A	377	ARG	CD-NE-CZ	5.07	130.70	123.60



There are no chirality outliers.

There are no planarity outliers.

## 5.2 Too-close contacts

In the following table, the Non-H and H(model) columns list the number of non-hydrogen atoms and hydrogen atoms in the chain respectively. The H(added) column lists the number of hydrogen atoms added and optimized by MolProbity. The Clashes column lists the number of clashes within the asymmetric unit, whereas Symm-Clashes lists symmetry related clashes.

Mol	Chain	Non-H	H(model)	H(added)	Clashes	Symm-Clashes
1	A	3033	0	2916	47	0
2	A	53	0	31	0	0
3	A	50	0	6	0	0
4	A	20	0	9	1	0
5	A	1	0	0	1	0
6	A	370	0	0	31	4
All	All	3527	0	2962	48	4

The all-atom clashscore is defined as the number of clashes found per 1000 atoms (including hydrogen atoms). The all-atom clashscore for this structure is 8.

All (48) close contacts within the same asymmetric unit are listed below, sorted by their clash magnitude.

Atom-1	Atom-2	Interatomic distance (Å)	Clash overlap (Å)
1:A:189:THR:HG23	6:A:2035:HOH:O	1.41	1.18
1:A:378:THR:O	6:A:2325:HOH:O	1.62	1.16
1:A:191:PRO:HA	1:A:224:MET:SD	1.93	1.07
1:A:282:GLU:OE2	6:A:2257:HOH:O	2.01	0.79
1:A:236:PHE:HA	6:A:2221:HOH:O	1.82	0.79
1:A:282:GLU:HG3	6:A:2117:HOH:O	1.84	0.76
1:A:189:THR:CG2	6:A:2035:HOH:O	2.12	0.76
1:A:171:GLU:OE2	6:A:2180:HOH:O	2.05	0.74
1:A:365[A]:ASP:OD1	6:A:2315:HOH:O	2.08	0.71
1:A:177:GLU:OE1	6:A:2191:HOH:O	2.11	0.69
1:A:42:GLY:O	6:A:2030:HOH:O	2.12	0.67
1:A:177:GLU:HG3	6:A:2194:HOH:O	1.93	0.67
1:A:92:ASP:OD2	6:A:2100:HOH:O	2.15	0.64
1:A:168:ARG:HD3	6:A:2174:HOH:O	1.98	0.62
1:A:172:LYS:HE3	6:A:2139:HOH:O	1.99	0.61
1:A:191:PRO:CA	1:A:224:MET:SD	2.80	0.61
1:A:240:ILE:O	6:A:2221:HOH:O	2.16	0.61

*Continued on next page...*

Continued from previous page...

Atom-1	Atom-2	Interatomic distance (Å)	Clash overlap (Å)
1:A:327:THR:HG23	6:A:2279:HOH:O	2.01	0.61
1:A:282:GLU:HG3	6:A:2256:HOH:O	2.01	0.60
1:A:397:ARG:C	6:A:2363:HOH:O	2.42	0.58
1:A:177:GLU:OE1	1:A:177:GLU:HA	2.04	0.58
1:A:8:ARG:NH2	1:A:143:LYS:HZ2	2.02	0.56
1:A:325:PHE:HE2	1:A:330:ASN:ND2	2.04	0.56
1:A:330:ASN:HB3	6:A:2151:HOH:O	2.05	0.55
1:A:390:LEU:HD23	6:A:2356:HOH:O	2.06	0.55
1:A:191:PRO:C	6:A:2205:HOH:O	2.44	0.54
1:A:385:LYS:HE3	1:A:386:TYR:CE1	2.43	0.53
1:A:224:MET:HG3	6:A:2119:HOH:O	2.10	0.52
1:A:8:ARG:NH2	1:A:143:LYS:NZ	2.59	0.51
1:A:301:GLN:HA	5:A:1401:CL:CL	2.47	0.51
1:A:168:ARG:CD	6:A:2174:HOH:O	2.60	0.48
1:A:25:LEU:HG	6:A:2009:HOH:O	2.14	0.48
1:A:177:GLU:CG	6:A:2192:HOH:O	2.61	0.47
1:A:301:GLN:CD	1:A:301:GLN:N	2.68	0.46
1:A:228:VAL:HG11	4:A:1400[B]:3HB:H6	1.98	0.45
1:A:190:THR:O	1:A:191:PRO:C	2.54	0.45
1:A:330:ASN:HD22	1:A:333:TRP:HE1	1.67	0.43
1:A:327:THR:N	6:A:2279:HOH:O	2.45	0.43
1:A:10:ILE:HA	1:A:33:THR:O	2.19	0.43
1:A:8:ARG:HH22	1:A:155:GLU:HG2	1.84	0.42
1:A:326:SER:HB2	6:A:2279:HOH:O	2.18	0.42
1:A:3:ASN:HD21	1:A:5:GLN:HE21	1.68	0.41
1:A:282:GLU:CD	6:A:2257:HOH:O	2.51	0.41
1:A:191:PRO:CB	6:A:2205:HOH:O	2.68	0.41
1:A:191:PRO:HB2	6:A:2205:HOH:O	2.20	0.40
1:A:192:TYR:HB2	1:A:223:GLU:O	2.21	0.40

All (4) symmetry-related close contacts are listed below. The label for Atom-2 includes the symmetry operator and encoded unit-cell translations to be applied.

Atom-1	Atom-2	Interatomic distance (Å)	Clash overlap (Å)
6:A:2328:HOH:O	6:A:2328:HOH:O[10_655]	1.61	0.59
6:A:2327:HOH:O	6:A:2327:HOH:O[7_545]	1.72	0.48
6:A:2090:HOH:O	6:A:2337:HOH:O[16_555]	2.00	0.20
6:A:2140:HOH:O	6:A:2140:HOH:O[7_545]	2.10	0.10

## 5.3 Torsion angles [i](#)

### 5.3.1 Protein backbone [i](#)

In the following table, the Percentiles column shows the percent Ramachandran outliers of the chain as a percentile score with respect to all X-ray entries followed by that with respect to entries of similar resolution.

The Analysed column shows the number of residues for which the backbone conformation was analysed, and the total number of residues.

Mol	Chain	Analysed	Favoured	Allowed	Outliers	Percentiles
1	A	387/424 (91%)	378 (98%)	9 (2%)	0	100 100

There are no Ramachandran outliers to report.

### 5.3.2 Protein sidechains [i](#)

In the following table, the Percentiles column shows the percent sidechain outliers of the chain as a percentile score with respect to all X-ray entries followed by that with respect to entries of similar resolution.

The Analysed column shows the number of residues for which the sidechain conformation was analysed, and the total number of residues.

Mol	Chain	Analysed	Rotameric	Outliers	Percentiles
1	A	307/337 (91%)	298 (97%)	9 (3%)	42 18

All (9) residues with a non-rotameric sidechain are listed below:

Mol	Chain	Res	Type
1	A	3	ASN
1	A	5	GLN
1	A	43	GLU
1	A	53	HIS
1	A	301	GLN
1	A	327	THR
1	A	338	LYS
1	A	341	ASN
1	A	347	ARG

Some sidechains can be flipped to improve hydrogen bonding and reduce clashes. All (2) such sidechains are listed below:

Mol	Chain	Res	Type
1	A	5	GLN
1	A	330	ASN

### 5.3.3 RNA [i](#)

There are no RNA molecules in this entry.

## 5.4 Non-standard residues in protein, DNA, RNA chains [i](#)

There are no non-standard protein/DNA/RNA residues in this entry.

## 5.5 Carbohydrates [i](#)

There are no monosaccharides in this entry.

## 5.6 Ligand geometry [i](#)

Of 6 ligands modelled in this entry, 1 is monoatomic - leaving 5 for Mogul analysis.

In the following table, the Counts columns list the number of bonds (or angles) for which Mogul statistics could be retrieved, the number of bonds (or angles) that are observed in the model and the number of bonds (or angles) that are defined in the Chemical Component Dictionary. The Link column lists molecule types, if any, to which the group is linked. The Z score for a bond length (or angle) is the number of standard deviations the observed value is removed from the expected value. A bond length (or angle) with  $|Z| > 2$  is considered an outlier worth inspection. RMSZ is the root-mean-square of all Z scores of the bond lengths (or angles).

Mol	Type	Chain	Res	Link	Bond lengths			Bond angles		
					Counts	RMSZ	# Z  > 2	Counts	RMSZ	# Z  > 2
4	3HB	A	1400[B]	-	8,10,10	1.08	1 (12%)	10,13,13	1.06	1 (10%)
3	P3A	A	1399[A]	-	43,43,57	1.07	4 (9%)	47,48,67	1.18	4 (8%)
3	P3A	A	1399[B]	-	43,43,57	1.03	4 (9%)	47,48,67	1.30	6 (12%)
4	3HB	A	1400[A]	-	8,10,10	1.24	1 (12%)	10,13,13	0.93	0
2	FAD	A	1398	-	51,58,58	2.49	18 (35%)	60,89,89	2.13	15 (25%)

In the following table, the Chirals column lists the number of chiral outliers, the number of chiral centers analysed, the number of these observed in the model and the number defined in the Chemical Component Dictionary. Similar counts are reported in the Torsion and Rings columns. '-' means no outliers of that kind were identified.

Mol	Type	Chain	Res	Link	Chirals	Torsions	Rings
4	3HB	A	1400[B]	-	-	0/0/4/4	0/1/1/1
3	P3A	A	1399[A]	-	-	7/45/45/65	-
3	P3A	A	1399[B]	-	-	10/45/45/65	-
4	3HB	A	1400[A]	-	-	0/0/4/4	0/1/1/1
2	FAD	A	1398	-	-	1/30/50/50	0/6/6/6

All (28) bond length outliers are listed below:

Mol	Chain	Res	Type	Atoms	Z	Observed(Å)	Ideal(Å)
2	A	1398	FAD	C4X-C10	9.10	1.47	1.38
2	A	1398	FAD	O4B-C1B	6.75	1.50	1.41
2	A	1398	FAD	C1'-N10	-4.69	1.43	1.48
3	A	1399[B]	P3A	O41-C42	4.24	1.45	1.33
3	A	1399[A]	P3A	O41-C42	4.24	1.45	1.33
2	A	1398	FAD	O4'-C4'	3.70	1.51	1.43
2	A	1398	FAD	C5'-C4'	-3.57	1.46	1.51
4	A	1400[A]	3HB	C1-C1'	3.41	1.50	1.47
2	A	1398	FAD	C8-C7	3.36	1.49	1.40
3	A	1399[B]	P3A	O37-C21	3.16	1.43	1.34
3	A	1399[A]	P3A	O37-C21	3.16	1.43	1.34
2	A	1398	FAD	C9A-C5X	3.16	1.48	1.42
2	A	1398	FAD	C9A-N10	2.99	1.42	1.38
4	A	1400[B]	3HB	C1-C1'	2.87	1.50	1.47
2	A	1398	FAD	O4B-C4B	-2.86	1.38	1.45
2	A	1398	FAD	PA-O2A	-2.83	1.42	1.55
2	A	1398	FAD	C2'-C3'	-2.67	1.48	1.53
2	A	1398	FAD	C2-N1	-2.64	1.32	1.38
2	A	1398	FAD	C2B-C1B	-2.44	1.50	1.53
2	A	1398	FAD	C10-N1	2.33	1.36	1.33
2	A	1398	FAD	PA-O1A	-2.28	1.42	1.50
2	A	1398	FAD	C9-C8	2.20	1.43	1.37
2	A	1398	FAD	C8M-C8	2.20	1.55	1.51
2	A	1398	FAD	O4-C4	2.17	1.30	1.24
3	A	1399[B]	P3A	C44-C42	-2.07	1.44	1.50
3	A	1399[A]	P3A	C44-C42	-2.07	1.44	1.50
3	A	1399[B]	P3A	O37-C38	-2.03	1.41	1.46
3	A	1399[A]	P3A	O37-C38	-2.03	1.41	1.46

All (26) bond angle outliers are listed below:

Mol	Chain	Res	Type	Atoms	Z	Observed(°)	Ideal(°)
2	A	1398	FAD	C4-N3-C2	9.80	123.41	115.14
2	A	1398	FAD	C4-C4X-C10	-4.64	116.88	119.95

*Continued on next page...*

*Continued from previous page...*

Mol	Chain	Res	Type	Atoms	Z	Observed(°)	Ideal(°)
2	A	1398	FAD	C1'-N10-C10	4.61	122.54	118.41
2	A	1398	FAD	N3A-C2A-N1A	-3.66	122.95	128.68
2	A	1398	FAD	C4X-C4-N3	-3.18	119.09	123.43
2	A	1398	FAD	O4B-C1B-C2B	-3.10	102.39	106.93
3	A	1399[B]	P3A	O41-C42-O43	-3.09	115.79	123.59
3	A	1399[A]	P3A	O41-C42-O43	-3.09	115.79	123.59
2	A	1398	FAD	P-O3P-PA	-3.06	122.31	132.83
3	A	1399[B]	P3A	O18-P16-O19	2.93	114.53	106.73
2	A	1398	FAD	C5'-C4'-C3'	2.91	117.82	112.20
2	A	1398	FAD	C9A-N10-C10	-2.84	118.19	121.91
2	A	1398	FAD	O2A-PA-O1A	2.81	126.15	112.24
3	A	1399[B]	P3A	P16-O19-C39	2.80	126.00	118.30
3	A	1399[B]	P3A	O37-C21-C22	2.57	117.04	111.50
3	A	1399[A]	P3A	O37-C21-C22	2.57	117.04	111.50
3	A	1399[B]	P3A	O37-C38-C40	-2.53	99.23	108.40
3	A	1399[A]	P3A	O37-C38-C40	-2.53	99.23	108.40
2	A	1398	FAD	C6-C5X-N5	-2.43	116.38	119.05
2	A	1398	FAD	O3B-C3B-C2B	2.37	119.50	111.82
4	A	1400[B]	3HB	C6-C1-C1'	-2.19	117.44	120.37
2	A	1398	FAD	C3B-C2B-C1B	2.16	104.23	100.98
3	A	1399[B]	P3A	C34-C33-C32	-2.10	103.76	114.42
3	A	1399[A]	P3A	C34-C33-C32	-2.10	103.76	114.42
2	A	1398	FAD	C4-C4X-N5	2.05	120.94	118.60
2	A	1398	FAD	C4A-C5A-N7A	-2.01	107.30	109.40

There are no chirality outliers.

All (18) torsion outliers are listed below:

Mol	Chain	Res	Type	Atoms
3	A	1399[B]	P3A	C39-O19-P16-O17
3	A	1399[B]	P3A	C53-C54-C55-C56
3	A	1399[A]	P3A	C53-C54-C55-C56
3	A	1399[B]	P3A	C50-C51-C52-C53
3	A	1399[A]	P3A	C50-C51-C52-C53
3	A	1399[B]	P3A	C30-C31-C32-C33
3	A	1399[A]	P3A	C30-C31-C32-C33
3	A	1399[B]	P3A	C40-C38-C39-O19
3	A	1399[B]	P3A	C54-C55-C56-C57
3	A	1399[A]	P3A	C54-C55-C56-C57
3	A	1399[B]	P3A	C25-C26-C27-C28
3	A	1399[A]	P3A	C25-C26-C27-C28
3	A	1399[B]	P3A	C39-O19-P16-O15

*Continued on next page...*

Continued from previous page...

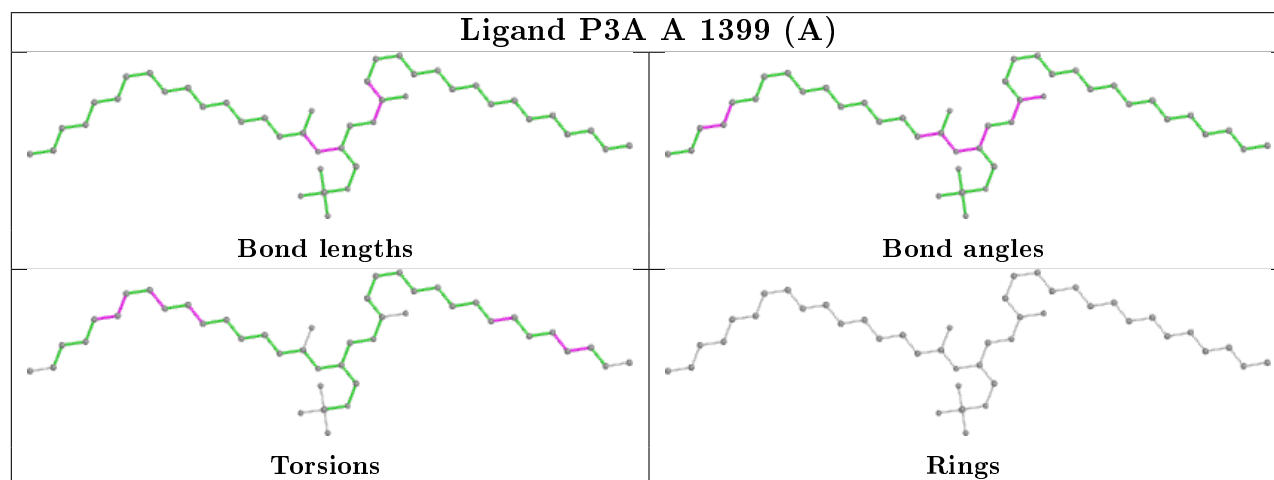
Mol	Chain	Res	Type	Atoms
3	A	1399[B]	P3A	C27-C28-C29-C30
3	A	1399[A]	P3A	C27-C28-C29-C30
3	A	1399[B]	P3A	C29-C30-C31-C32
3	A	1399[A]	P3A	C29-C30-C31-C32
2	A	1398	FAD	O4B-C4B-C5B-O5B

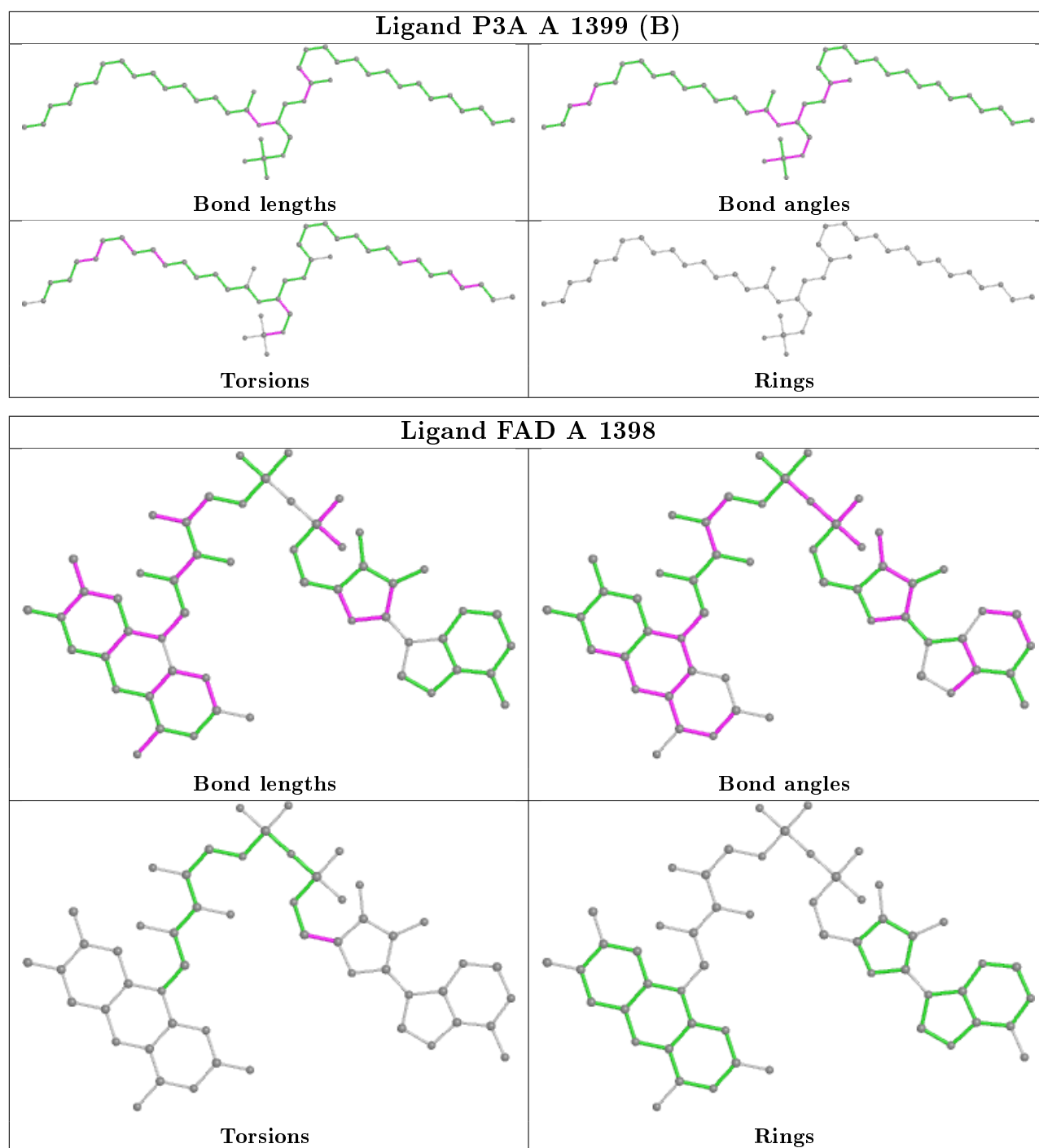
There are no ring outliers.

1 monomer is involved in 1 short contact:

Mol	Chain	Res	Type	Clashes	Symm-Clashes
4	A	1400[B]	3HB	1	0

The following is a two-dimensional graphical depiction of Mogul quality analysis of bond lengths, bond angles, torsion angles, and ring geometry for all instances of the Ligand of Interest. In addition, ligands with molecular weight > 250 and outliers as shown on the validation Tables will also be included. For torsion angles, if less than 5% of the Mogul distribution of torsion angles is within 10 degrees of the torsion angle in question, then that torsion angle is considered an outlier. Any bond that is central to one or more torsion angles identified as an outlier by Mogul will be highlighted in the graph. For rings, the root-mean-square deviation (RMSD) between the ring in question and similar rings identified by Mogul is calculated over all ring torsion angles. If the average RMSD is greater than 60 degrees and the minimal RMSD between the ring in question and any Mogul-identified rings is also greater than 60 degrees, then that ring is considered an outlier. The outliers are highlighted in purple. The color gray indicates Mogul did not find sufficient equivalents in the CSD to analyse the geometry.





## 5.7 Other polymers [i](#)

There are no such residues in this entry.

## 5.8 Polymer linkage issues [i](#)

There are no chain breaks in this entry.



## 6 Fit of model and data [i](#)

### 6.1 Protein, DNA and RNA chains [i](#)

In the following table, the column labelled '#RSRZ> 2' contains the number (and percentage) of RSRZ outliers, followed by percent RSRZ outliers for the chain as percentile scores relative to all X-ray entries and entries of similar resolution. The OWAB column contains the minimum, median, 95<sup>th</sup> percentile and maximum values of the occupancy-weighted average B-factor per residue. The column labelled 'Q< 0.9' lists the number of (and percentage) of residues with an average occupancy less than 0.9.

Mol	Chain	Analysed	<RSRZ>	#RSRZ>2	OWAB(Å <sup>2</sup> )	Q<0.9
1	A	389/424 (91%)	0.28	20 (5%) 28 33	13, 25, 46, 60	0

All (20) RSRZ outliers are listed below:

Mol	Chain	Res	Type	RSRZ
1	A	69	SER	3.4
1	A	262	ARG	3.0
1	A	5	GLN	2.9
1	A	271	ARG	2.9
1	A	151	GLY	2.8
1	A	191	PRO	2.8
1	A	270	ASP	2.7
1	A	327	THR	2.7
1	A	39	SER	2.6
1	A	255	HIS	2.6
1	A	326	SER	2.6
1	A	150	ASP	2.4
1	A	292	LEU	2.4
1	A	220	ARG	2.2
1	A	77	ILE	2.2
1	A	200	ASP	2.1
1	A	250	GLU	2.1
1	A	290	ILE	2.0
1	A	310	ALA	2.0
1	A	192	TYR	2.0

### 6.2 Non-standard residues in protein, DNA, RNA chains [i](#)

There are no non-standard protein/DNA/RNA residues in this entry.

### 6.3 Carbohydrates [i](#)

There are no monosaccharides in this entry.

### 6.4 Ligands [i](#)

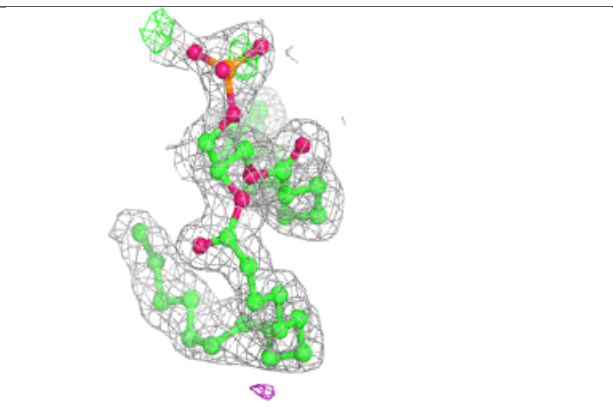
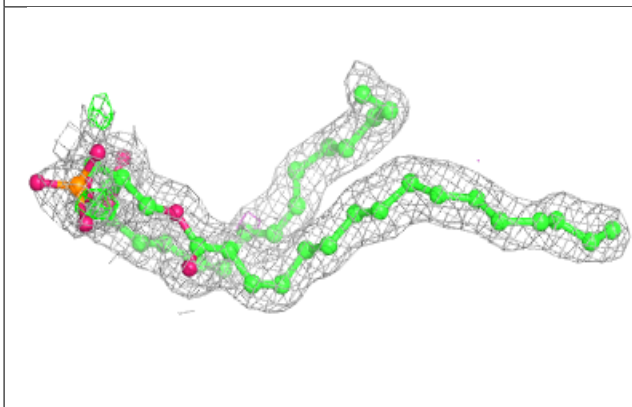
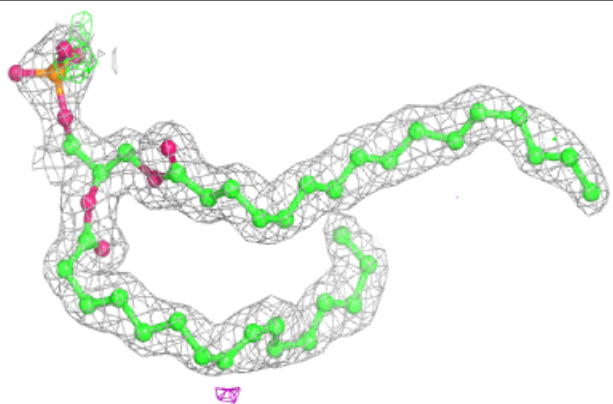
In the following table, the Atoms column lists the number of modelled atoms in the group and the number defined in the chemical component dictionary. The B-factors column lists the minimum, median, 95<sup>th</sup> percentile and maximum values of B factors of atoms in the group. The column labelled 'Q< 0.9' lists the number of atoms with occupancy less than 0.9.

Mol	Type	Chain	Res	Atoms	RSCC	RSR	B-factors(Å <sup>2</sup> )	Q<0.9
3	P3A	A	1399[B]	44/58	0.87	0.15	20,28,35,38	6
3	P3A	A	1399[A]	44/58	0.87	0.15	20,27,33,35	6
4	3HB	A	1400[A]	10/10	0.92	0.17	32,34,36,39	10
4	3HB	A	1400[B]	10/10	0.92	0.17	31,35,35,42	10
2	FAD	A	1398	53/53	0.97	0.11	14,21,29,31	0
5	CL	A	1401	1/1	0.99	0.08	25,25,25,25	0

The following is a graphical depiction of the model fit to experimental electron density of all instances of the Ligand of Interest. In addition, ligands with molecular weight > 250 and outliers as shown on the geometry validation Tables will also be included. Each fit is shown from different orientation to approximate a three-dimensional view.

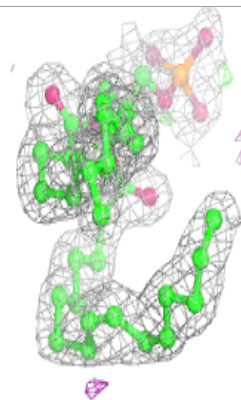
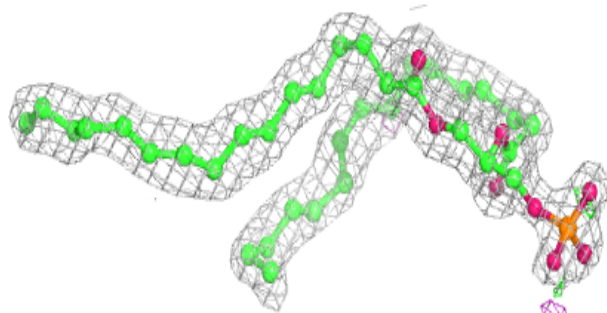
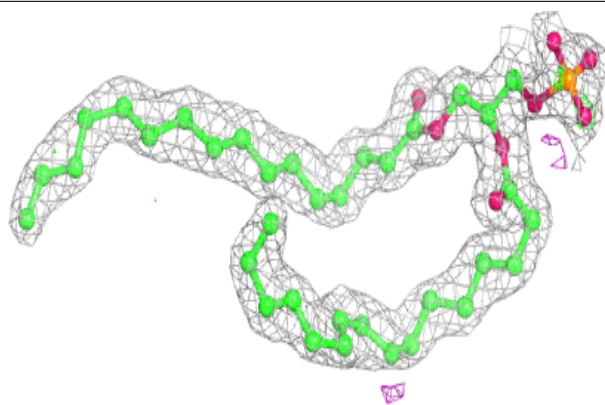
#### Electron density around P3A A 1399 (B):

2mF<sub>o</sub>-DF<sub>c</sub> (at 0.7 rmsd) in gray  
 mF<sub>o</sub>-DF<sub>c</sub> (at 3 rmsd) in purple (negative)  
 and green (positive)

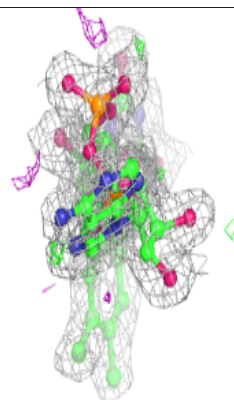
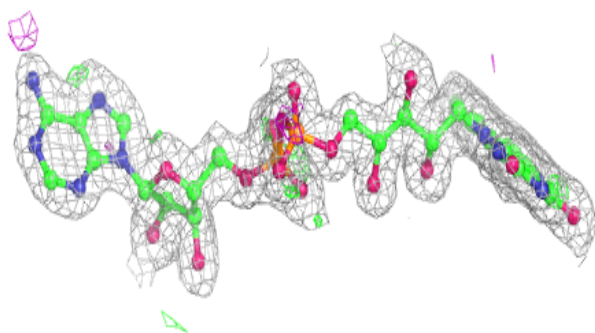
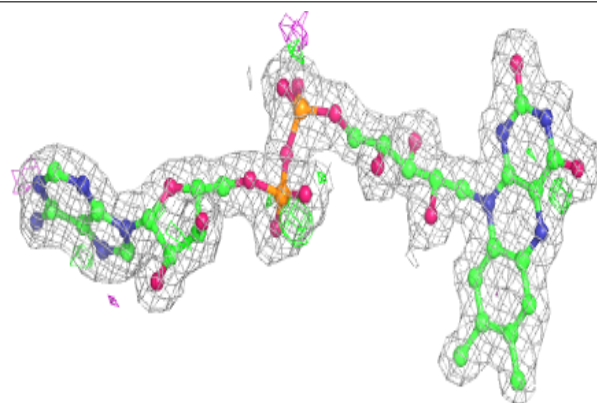


**Electron density around P3A A 1399 (A):**

$2mF_o-DF_c$  (at 0.7 rmsd) in gray  
 $mF_o-DF_c$  (at 3 rmsd) in purple (negative)  
and green (positive)

**Electron density around FAD A 1398:**

$2mF_o-DF_c$  (at 0.7 rmsd) in gray  
 $mF_o-DF_c$  (at 3 rmsd) in purple (negative)  
and green (positive)



## 6.5 Other polymers

There are no such residues in this entry.