



wwPDB X-ray Structure Validation Summary Report

Dec 16, 2023 – 11:09 pm GMT

PDB ID : 4BC0
Title : Structure of mouse acetylcholinesterase inhibited by CBDP (12-h soak) : Cresyl-phosphoserine adduct
Authors : Carletti, E.; Colletier, J.-P.; Schopfer, L.M.; Santoni, G.; Masson, P.; Lockridge, O.; Nachon, F.; Weik, M.
Deposited on : 2012-09-30
Resolution : 3.35 Å(reported)

This is a wwPDB X-ray Structure Validation Summary Report for a publicly released PDB entry.

We welcome your comments at validation@mail.wwpdb.org

A user guide is available at

<https://www.wwpdb.org/validation/2017/XrayValidationReportHelp>

with specific help available everywhere you see the  symbol.

The types of validation reports are described at

<http://www.wwpdb.org/validation/2017/FAQs#types>.

The following versions of software and data (see [references](#) ) were used in the production of this report:

MolProbity : 4.02b-467
Mogul : 1.8.4, CSD as541be (2020)
Xtriage (Phenix) : 1.13
EDS : 2.36
Percentile statistics : 20191225.v01 (using entries in the PDB archive December 25th 2019)
Refmac : 5.8.0158
CCP4 : 7.0.044 (Gargrove)
Ideal geometry (proteins) : Engh & Huber (2001)
Ideal geometry (DNA, RNA) : Parkinson et al. (1996)
Validation Pipeline (wwPDB-VP) : 2.36

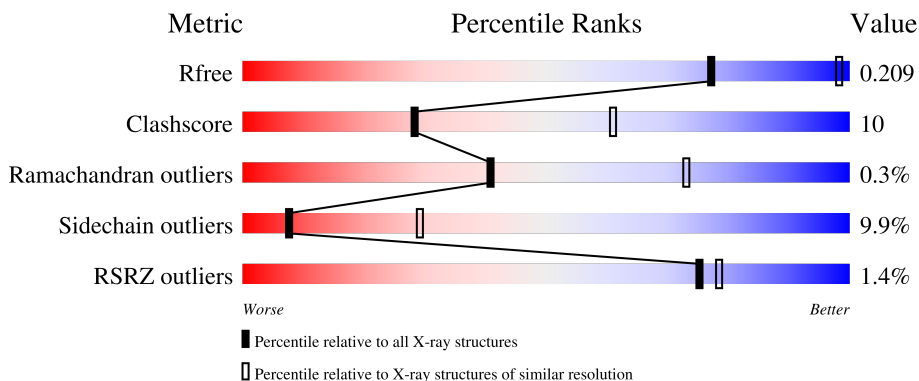
1 Overall quality at a glance

The following experimental techniques were used to determine the structure:

X-RAY DIFFRACTION

The reported resolution of this entry is 3.35 Å.

Percentile scores (ranging between 0-100) for global validation metrics of the entry are shown in the following graphic. The table shows the number of entries on which the scores are based.



Metric	Whole archive (#Entries)	Similar resolution (#Entries, resolution range(Å))
R_{free}	130704	1558 (3.42-3.30)
Clashscore	141614	1627 (3.42-3.30)
Ramachandran outliers	138981	1599 (3.42-3.30)
Sidechain outliers	138945	1598 (3.42-3.30)
RSRZ outliers	127900	1507 (3.42-3.30)

The table below summarises the geometric issues observed across the polymeric chains and their fit to the electron density. The red, orange, yellow and green segments of the lower bar indicate the fraction of residues that contain outliers for ≥ 3 , 2, 1 and 0 types of geometric quality criteria respectively. A grey segment represents the fraction of residues that are not modelled. The numeric value for each fraction is indicated below the corresponding segment, with a dot representing fractions $\leq 5\%$. The upper red bar (where present) indicates the fraction of residues that have poor fit to the electron density. The numeric value is given above the bar.

Mol	Chain	Length	Quality of chain
1	A	543	 2% 74% 24% .
1	B	543	 2% 64% 30% 5% .
1	C	543	 2% 76% 22% ..
1	D	543	 % 71% 25% ..

The following table lists non-polymeric compounds, carbohydrate monomers and non-standard

residues in protein, DNA, RNA chains that are outliers for geometric or electron-density-fit criteria:

Mol	Type	Chain	Res	Chirality	Geometry	Clashes	Electron density
3	NAG	B	702	-	-	-	X
3	NAG	C	701	-	-	-	X
3	NAG	D	702	X	-	-	-
3	NAG	D	703	-	-	-	X

2 Entry composition [i](#)

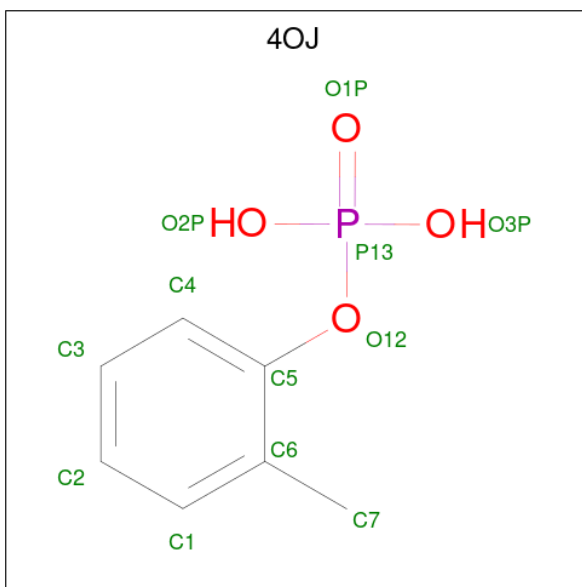
There are 6 unique types of molecules in this entry. The entry contains 17432 atoms, of which 0 are hydrogens and 0 are deuteriums.

In the tables below, the ZeroOcc column contains the number of atoms modelled with zero occupancy, the AltConf column contains the number of residues with at least one atom in alternate conformation and the Trace column contains the number of residues modelled with at most 2 atoms.

- Molecule 1 is a protein called ACETYLCHOLINESTERASE.

Mol	Chain	Residues	Atoms					ZeroOcc	AltConf	Trace
			Total	C	N	O	S			
1	A	542	Total 4215	C 2702	N 733	O 766	S 14	0	0	0
1	B	539	Total 4191	C 2689	N 727	O 761	S 14	0	0	0
1	C	540	Total 4200	C 2694	N 728	O 764	S 14	0	0	0
1	D	540	Total 4200	C 2694	N 728	O 764	S 14	0	0	0

- Molecule 2 is (2-methylphenyl) dihydrogen phosphate (three-letter code: 4OJ) (formula: C₇H₉O₄P).



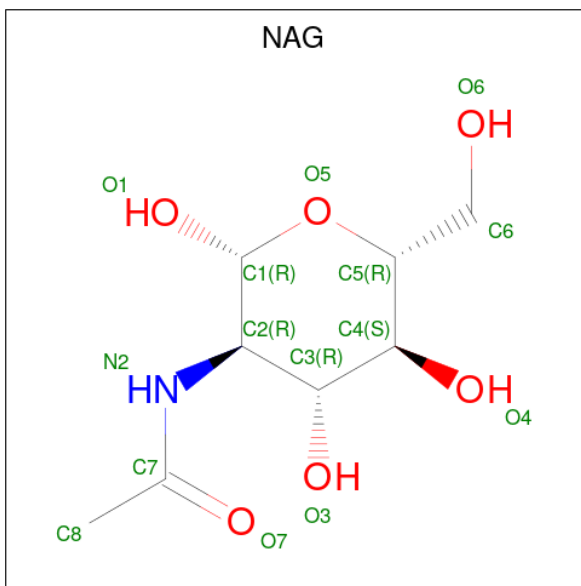
Mol	Chain	Residues	Atoms				ZeroOcc	AltConf
			Total	C	O	P		
2	A	1	Total 11	C 7	O 3	P 1	0	0
2	B	1	Total 11	C 7	O 3	P 1	0	0

Continued on next page...

Continued from previous page...

Mol	Chain	Residues	Atoms				ZeroOcc	AltConf
2	C	1	Total	C	O	P	0	0
			11	7	3	1		
2	D	1	Total	C	O	P	0	0
			11	7	3	1		

- Molecule 3 is 2-acetamido-2-deoxy-beta-D-glucopyranose (three-letter code: NAG) (formula: $C_8H_{15}NO_6$).



Mol	Chain	Residues	Atoms				ZeroOcc	AltConf
3	A	1	Total	C	N	O	0	0
			14	8	1	5		
3	B	1	Total	C	N	O	0	0
			14	8	1	5		
3	B	1	Total	C	N	O	0	0
			14	8	1	5		
3	C	1	Total	C	N	O	0	0
			14	8	1	5		
3	D	1	Total	C	N	O	0	0
			14	8	1	5		
3	D	1	Total	C	N	O	0	0
			14	8	1	5		
3	D	1	Total	C	N	O	0	0
			14	8	1	5		

- Molecule 4 is SULFATE ION (three-letter code: SO4) (formula: O_4S).



Mol	Chain	Residues	Atoms			ZeroOcc	AltConf
4	A	1	Total	O	S	0	0
			5	4	1		
4	A	1	Total	O	S	0	0
			5	4	1		
4	A	1	Total	O	S	0	0
			5	4	1		
4	A	1	Total	O	S	0	0
			5	4	1		
4	B	1	Total	O	S	0	0
			5	4	1		
4	B	1	Total	O	S	0	0
			5	4	1		
4	B	1	Total	O	S	0	0
			5	4	1		
4	C	1	Total	O	S	0	0
			5	4	1		
4	C	1	Total	O	S	0	0
			5	4	1		
4	D	1	Total	O	S	0	0
			5	4	1		
4	D	1	Total	O	S	0	0
			5	4	1		
4	D	1	Total	O	S	0	0
			5	4	1		

- Molecule 5 is CHLORIDE ION (three-letter code: CL) (formula: Cl).

Mol	Chain	Residues	Atoms	ZeroOcc	AltConf
5	C	5	Total Cl 5 5	0	0
5	D	3	Total Cl 3 3	0	0

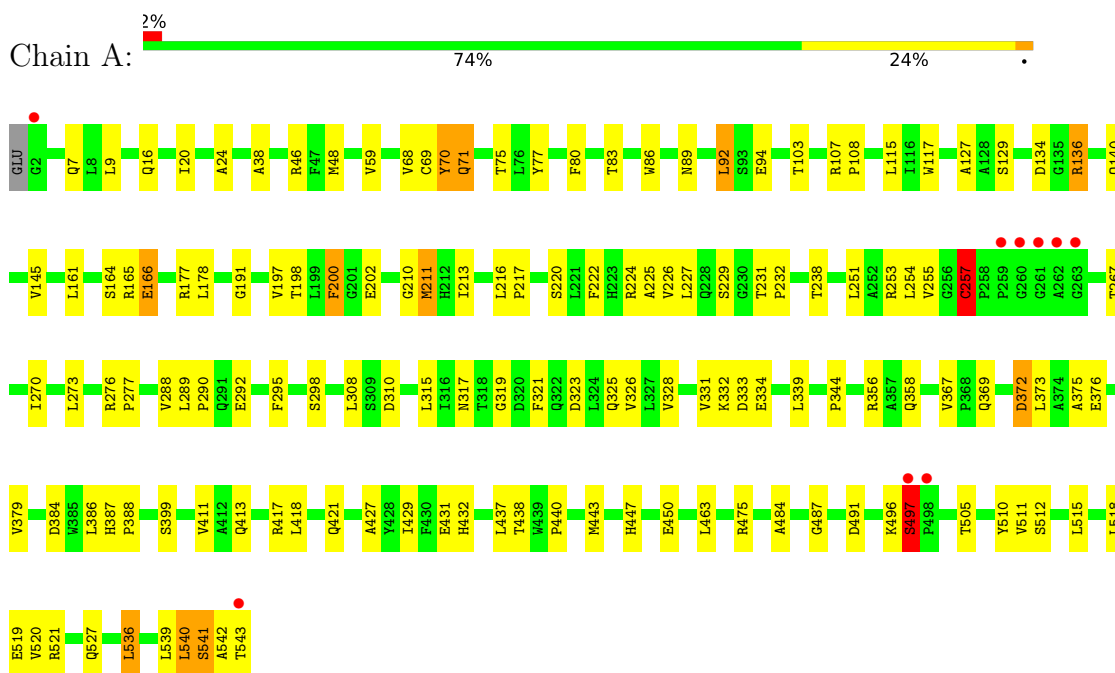
- Molecule 6 is water.

Mol	Chain	Residues	Atoms	ZeroOcc	AltConf
6	A	117	Total O 117 117	0	0
6	B	82	Total O 82 82	0	0
6	C	115	Total O 115 115	0	0
6	D	97	Total O 97 97	0	0

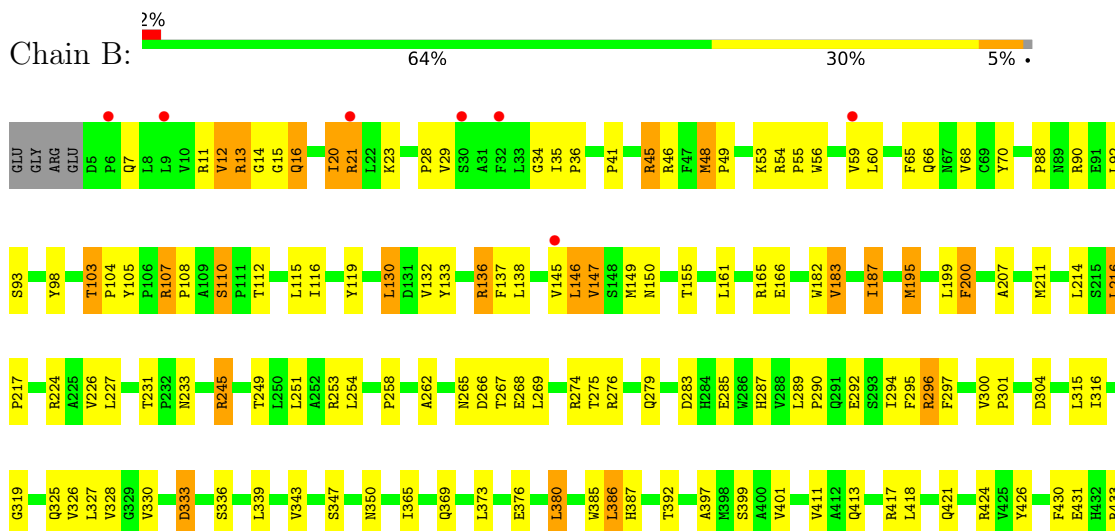
3 Residue-property plots

These plots are drawn for all protein, RNA, DNA and oligosaccharide chains in the entry. The first graphic for a chain summarises the proportions of the various outlier classes displayed in the second graphic. The second graphic shows the sequence view annotated by issues in geometry and electron density. Residues are color-coded according to the number of geometric quality criteria for which they contain at least one outlier: green = 0, yellow = 1, orange = 2 and red = 3 or more. A red dot above a residue indicates a poor fit to the electron density ($RSRZ > 2$). Stretches of 2 or more consecutive residues without any outlier are shown as a green connector. Residues present in the sample, but not in the model, are shown in grey.

• Molecule 1: ACETYLCHOLINESTERASE



• Molecule 1: ACETYLCHOLINESTERASE



4 Data and refinement statistics

Property	Value	Source
Space group	P 21 21 21	Depositor
Cell constants a, b, c, α , β , γ	136.94Å 174.04Å 225.62Å 90.00° 90.00° 90.00°	Depositor
Resolution (Å)	48.62 – 3.35 48.61 – 3.35	Depositor EDS
% Data completeness (in resolution range)	96.7 (48.62-3.35) 96.7 (48.61-3.35)	Depositor EDS
R_{merge}	0.08	Depositor
R_{sym}	(Not available)	Depositor
$\langle I/\sigma(I) \rangle$ ¹	2.98 (at 3.33Å)	Xtrriage
Refinement program	PHENIX (PHENIX.REFINE: 1.8.1_1168)	Depositor
R, R_{free}	0.162 , 0.208 0.163 , 0.209	Depositor DCC
R_{free} test set	2265 reflections (3.00%)	wwPDB-VP
Wilson B-factor (Å ²)	94.9	Xtrriage
Anisotropy	0.018	Xtrriage
Bulk solvent k_{sol} (e/Å ³), B_{sol} (Å ²)	0.31 , 61.4	EDS
L-test for twinning ²	$\langle L \rangle = 0.48$, $\langle L^2 \rangle = 0.31$	Xtrriage
Estimated twinning fraction	No twinning to report.	Xtrriage
F_o, F_c correlation	0.95	EDS
Total number of atoms	17432	wwPDB-VP
Average B, all atoms (Å ²)	47.0	wwPDB-VP

Xtrriage's analysis on translational NCS is as follows: *The largest off-origin peak in the Patterson function is 2.46% of the height of the origin peak. No significant pseudotranslation is detected.*

¹Intensities estimated from amplitudes.

²Theoretical values of $\langle |L| \rangle$, $\langle L^2 \rangle$ for acentric reflections are 0.5, 0.333 respectively for untwinned datasets, and 0.375, 0.2 for perfectly twinned datasets.

5 Model quality [i](#)

5.1 Standard geometry [i](#)

Bond lengths and bond angles in the following residue types are not validated in this section: NAG, CL, 4OJ, SO4

The Z score for a bond length (or angle) is the number of standard deviations the observed value is removed from the expected value. A bond length (or angle) with $|Z| > 5$ is considered an outlier worth inspection. RMSZ is the root-mean-square of all Z scores of the bond lengths (or angles).

Mol	Chain	Bond lengths		Bond angles	
		RMSZ	# Z >5	RMSZ	# Z >5
1	A	0.46	0/4341	0.70	1/5931 (0.0%)
1	B	0.43	0/4317	0.67	0/5900
1	C	0.47	0/4326	0.71	1/5912 (0.0%)
1	D	0.44	0/4326	0.68	1/5912 (0.0%)
All	All	0.45	0/17310	0.69	3/23655 (0.0%)

Chiral center outliers are detected by calculating the chiral volume of a chiral center and verifying if the center is modelled as a planar moiety or with the opposite hand. A planarity outlier is detected by checking planarity of atoms in a peptide group, atoms in a mainchain group or atoms of a sidechain that are expected to be planar.

Mol	Chain	#Chirality outliers	#Planarity outliers
1	A	0	4
1	B	0	1
1	C	0	3
1	D	0	1
All	All	0	9

There are no bond length outliers.

All (3) bond angle outliers are listed below:

Mol	Chain	Res	Type	Atoms	Z	Observed(°)	Ideal(°)
1	D	497	SER	N-CA-C	-6.95	92.24	111.00
1	A	497	SER	N-CA-C	5.74	126.49	111.00
1	C	524	LEU	CA-CB-CG	5.50	127.96	115.30

There are no chirality outliers.

5 of 9 planarity outliers are listed below:

Mol	Chain	Res	Type	Group
1	A	257	CYS	Peptide
1	A	323	ASP	Peptide
1	A	497	SER	Peptide
1	A	541	SER	Peptide
1	B	496	LYS	Peptide

5.2 Too-close contacts [i](#)

In the following table, the Non-H and H(model) columns list the number of non-hydrogen atoms and hydrogen atoms in the chain respectively. The H(added) column lists the number of hydrogen atoms added and optimized by MolProbity. The Clashes column lists the number of clashes within the asymmetric unit, whereas Symm-Clashes lists symmetry-related clashes.

Mol	Chain	Non-H	H(model)	H(added)	Clashes	Symm-Clashes
1	A	4215	0	4103	81	0
1	B	4191	0	4080	120	0
1	C	4200	0	4088	53	0
1	D	4200	0	4086	83	0
2	A	11	0	7	1	0
2	B	11	0	7	0	0
2	C	11	0	7	0	0
2	D	11	0	7	0	0
3	A	14	0	13	0	0
3	B	28	0	26	1	0
3	C	14	0	13	0	0
3	D	42	0	39	1	0
4	A	25	0	0	1	0
4	B	15	0	0	0	0
4	C	10	0	0	0	0
4	D	15	0	0	1	0
5	C	5	0	0	0	0
5	D	3	0	0	0	0
6	A	117	0	0	8	0
6	B	82	0	0	6	0
6	C	115	0	0	6	0
6	D	97	0	0	4	0
All	All	17432	0	16476	328	0

The all-atom clashscore is defined as the number of clashes found per 1000 atoms (including hydrogen atoms). The all-atom clashscore for this structure is 10.

The worst 5 of 328 close contacts within the same asymmetric unit are listed below, sorted by their clash magnitude.

Atom-1	Atom-2	Interatomic distance (Å)	Clash overlap (Å)
1:B:496:LYS:HB3	1:B:497:SER:HA	1.62	0.82
1:B:227:LEU:HB2	1:B:328:VAL:HG12	1.65	0.79
1:A:496:LYS:HD2	1:A:497:SER:HB3	1.65	0.77
1:B:28:PRO:HG2	1:B:105:TYR:HB3	1.66	0.76
1:C:286:TRP:NE1	6:C:2077:HOH:O	2.19	0.75

There are no symmetry-related clashes.

5.3 Torsion angles [i](#)

5.3.1 Protein backbone [i](#)

In the following table, the Percentiles column shows the percent Ramachandran outliers of the chain as a percentile score with respect to all X-ray entries followed by that with respect to entries of similar resolution.

The Analysed column shows the number of residues for which the backbone conformation was analysed, and the total number of residues.

Mol	Chain	Analysed	Favoured	Allowed	Outliers	Percentiles
1	A	540/543 (99%)	510 (94%)	29 (5%)	1 (0%)	47 78
1	B	537/543 (99%)	502 (94%)	31 (6%)	4 (1%)	22 56
1	C	538/543 (99%)	512 (95%)	25 (5%)	1 (0%)	47 78
1	D	538/543 (99%)	508 (94%)	30 (6%)	0	100 100
All	All	2153/2172 (99%)	2032 (94%)	115 (5%)	6 (0%)	41 73

5 of 6 Ramachandran outliers are listed below:

Mol	Chain	Res	Type
1	A	542	ALA
1	B	13	ARG
1	B	12	VAL
1	B	526	ALA
1	C	110	SER

5.3.2 Protein sidechains [i](#)

In the following table, the Percentiles column shows the percent sidechain outliers of the chain as a percentile score with respect to all X-ray entries followed by that with respect to entries of similar resolution.

The Analysed column shows the number of residues for which the sidechain conformation was analysed, and the total number of residues.

Mol	Chain	Analysed	Rotameric	Outliers	Percentiles	
1	A	442/443 (100%)	404 (91%)	38 (9%)	10	36
1	B	440/443 (99%)	389 (88%)	51 (12%)	5	21
1	C	441/443 (100%)	395 (90%)	46 (10%)	7	27
1	D	441/443 (100%)	402 (91%)	39 (9%)	10	34
All	All	1764/1772 (100%)	1590 (90%)	174 (10%)	8	29

5 of 174 residues with a non-rotameric sidechain are listed below:

Mol	Chain	Res	Type
1	C	364	ARG
1	D	181	GLN
1	C	392	THR
1	C	524	LEU
1	D	272	CYS

Sometimes sidechains can be flipped to improve hydrogen bonding and reduce clashes. There are no such sidechains identified.

5.3.3 RNA [i](#)

There are no RNA molecules in this entry.

5.4 Non-standard residues in protein, DNA, RNA chains [i](#)

There are no non-standard protein/DNA/RNA residues in this entry.

5.5 Carbohydrates [i](#)

There are no monosaccharides in this entry.

5.6 Ligand geometry [i](#)

Of 32 ligands modelled in this entry, 8 are monoatomic - leaving 24 for Mogul analysis.

In the following table, the Counts columns list the number of bonds (or angles) for which Mogul statistics could be retrieved, the number of bonds (or angles) that are observed in the model and the number of bonds (or angles) that are defined in the Chemical Component Dictionary. The

Link column lists molecule types, if any, to which the group is linked. The Z score for a bond length (or angle) is the number of standard deviations the observed value is removed from the expected value. A bond length (or angle) with $|Z| > 2$ is considered an outlier worth inspection. RMSZ is the root-mean-square of all Z scores of the bond lengths (or angles).

Mol	Type	Chain	Res	Link	Bond lengths			Bond angles		
					Counts	RMSZ	# Z > 2	Counts	RMSZ	# Z > 2
4	SO4	C	1547	-	4,4,4	0.11	0	6,6,6	0.27	0
4	SO4	C	1546	-	4,4,4	0.17	0	6,6,6	0.36	0
4	SO4	B	1544	-	4,4,4	0.12	0	6,6,6	0.28	0
3	NAG	B	702	1	14,14,15	0.61	0	17,19,21	1.61	2 (11%)
2	4OJ	D	600	1	8,11,12	0.68	0	10,14,17	1.10	1 (10%)
4	SO4	D	1546	-	4,4,4	0.17	0	6,6,6	0.13	0
3	NAG	C	701	-	14,14,15	0.41	0	17,19,21	1.27	2 (11%)
4	SO4	A	1544	-	4,4,4	0.16	0	6,6,6	0.16	0
4	SO4	B	1546	-	4,4,4	0.13	0	6,6,6	0.10	0
4	SO4	A	1546	-	4,4,4	0.13	0	6,6,6	0.15	0
4	SO4	D	1544	-	4,4,4	0.15	0	6,6,6	0.27	0
4	SO4	A	1548	-	4,4,4	0.19	0	6,6,6	0.19	0
3	NAG	A	701	1	14,14,15	0.51	0	17,19,21	0.97	2 (11%)
4	SO4	D	1545	-	4,4,4	0.15	0	6,6,6	0.10	0
3	NAG	D	702	1	14,14,15	0.99	1 (7%)	17,19,21	2.02	6 (35%)
4	SO4	B	1545	-	4,4,4	0.16	0	6,6,6	0.12	0
2	4OJ	A	600	1	8,11,12	0.69	0	10,14,17	1.00	1 (10%)
2	4OJ	B	600	1	8,11,12	0.54	0	10,14,17	1.13	1 (10%)
2	4OJ	C	600	1	8,11,12	0.63	0	10,14,17	1.02	1 (10%)
4	SO4	A	1545	-	4,4,4	0.12	0	6,6,6	0.20	0
4	SO4	A	1547	-	4,4,4	0.13	0	6,6,6	0.28	0
3	NAG	D	701	1	14,14,15	0.55	0	17,19,21	1.36	2 (11%)
3	NAG	B	701	1	14,14,15	0.47	0	17,19,21	2.21	6 (35%)
3	NAG	D	703	1	14,14,15	0.51	0	17,19,21	1.11	1 (5%)

In the following table, the Chirals column lists the number of chiral outliers, the number of chiral centers analysed, the number of these observed in the model and the number defined in the Chemical Component Dictionary. Similar counts are reported in the Torsion and Rings columns. '-' means no outliers of that kind were identified.

Mol	Type	Chain	Res	Link	Chirals	Torsions	Rings
2	4OJ	C	600	1	-	0/2/4/5	0/1/1/1
3	NAG	C	701	-	-	2/6/23/26	0/1/1/1
3	NAG	B	701	1	-	5/6/23/26	0/1/1/1
3	NAG	A	701	1	-	2/6/23/26	0/1/1/1

Continued on next page...

Continued from previous page...

Mol	Type	Chain	Res	Link	Chirals	Torsions	Rings
3	NAG	D	702	1	1/1/5/7	5/6/23/26	0/1/1/1
3	NAG	B	702	1	-	4/6/23/26	0/1/1/1
3	NAG	D	701	1	-	4/6/23/26	0/1/1/1
3	NAG	D	703	1	-	3/6/23/26	0/1/1/1
2	4OJ	A	600	1	-	0/2/4/5	0/1/1/1
2	4OJ	D	600	1	-	0/2/4/5	0/1/1/1
2	4OJ	B	600	1	-	0/2/4/5	0/1/1/1

All (1) bond length outliers are listed below:

Mol	Chain	Res	Type	Atoms	Z	Observed(Å)	Ideal(Å)
3	D	702	NAG	C1-C2	2.82	1.56	1.52

The worst 5 of 25 bond angle outliers are listed below:

Mol	Chain	Res	Type	Atoms	Z	Observed(°)	Ideal(°)
3	B	701	NAG	C1-O5-C5	5.04	119.03	112.19
3	D	702	NAG	C2-N2-C7	4.79	129.72	122.90
3	B	702	NAG	C1-O5-C5	4.43	118.19	112.19
3	B	701	NAG	C4-C3-C2	-3.94	105.24	111.02
3	B	701	NAG	O5-C1-C2	-3.66	105.51	111.29

All (1) chirality outliers are listed below:

Mol	Chain	Res	Type	Atom
3	D	702	NAG	C1

5 of 25 torsion outliers are listed below:

Mol	Chain	Res	Type	Atoms
3	B	701	NAG	C8-C7-N2-C2
3	B	701	NAG	O7-C7-N2-C2
3	B	702	NAG	C8-C7-N2-C2
3	B	702	NAG	O7-C7-N2-C2
3	D	702	NAG	C3-C2-N2-C7

There are no ring outliers.

5 monomers are involved in 5 short contacts:

Mol	Chain	Res	Type	Clashes	Symm-Clashes
4	D	1544	SO4	1	0
3	D	702	NAG	1	0
2	A	600	4OJ	1	0
4	A	1545	SO4	1	0
3	B	701	NAG	1	0

5.7 Other polymers [i](#)

There are no such residues in this entry.

5.8 Polymer linkage issues [i](#)

There are no chain breaks in this entry.

6 Fit of model and data [i](#)

6.1 Protein, DNA and RNA chains [i](#)

In the following table, the column labelled ‘#RSRZ > 2’ contains the number (and percentage) of RSRZ outliers, followed by percent RSRZ outliers for the chain as percentile scores relative to all X-ray entries and entries of similar resolution. The OWAB column contains the minimum, median, 95th percentile and maximum values of the occupancy-weighted average B-factor per residue. The column labelled ‘Q < 0.9’ lists the number of (and percentage) of residues with an average occupancy less than 0.9.

Mol	Chain	Analysed	<RSRZ>	#RSRZ>2	OWAB(Å ²)	Q<0.9
1	A	542/543 (99%)	-0.21	9 (1%) 70 73	16, 35, 75, 135	2 (0%)
1	B	539/543 (99%)	-0.11	9 (1%) 70 73	24, 61, 106, 152	0
1	C	540/543 (99%)	-0.29	9 (1%) 70 73	13, 30, 71, 145	1 (0%)
1	D	540/543 (99%)	-0.21	4 (0%) 87 91	20, 43, 87, 128	1 (0%)
All	All	2161/2172 (99%)	-0.20	31 (1%) 75 78	13, 40, 94, 152	4 (0%)

The worst 5 of 31 RSRZ outliers are listed below:

Mol	Chain	Res	Type	RSRZ
1	C	260	GLY	6.5
1	C	259	PRO	5.4
1	C	261	GLY	4.0
1	B	30	SER	3.7
1	A	260	GLY	3.5

6.2 Non-standard residues in protein, DNA, RNA chains [i](#)

There are no non-standard protein/DNA/RNA residues in this entry.

6.3 Carbohydrates [i](#)

There are no monosaccharides in this entry.

6.4 Ligands [i](#)

In the following table, the Atoms column lists the number of modelled atoms in the group and the number defined in the chemical component dictionary. The B-factors column lists the minimum, median, 95th percentile and maximum values of B factors of atoms in the group. The column labelled ‘Q < 0.9’ lists the number of atoms with occupancy less than 0.9.

Mol	Type	Chain	Res	Atoms	RSCC	RSR	B-factors(\AA^2)	Q<0.9
3	NAG	D	702	14/15	0.66	0.37	84,92,95,96	0
3	NAG	D	703	14/15	0.73	0.42	115,127,131,133	0
5	CL	C	1544	1/1	0.73	0.16	42,42,42,42	0
3	NAG	B	702	14/15	0.74	0.41	61,97,104,106	0
4	SO4	A	1548	5/5	0.75	0.23	120,121,122,123	0
3	NAG	B	701	14/15	0.75	0.24	85,91,95,97	0
3	NAG	C	701	14/15	0.78	0.53	102,104,105,106	14
5	CL	C	3001	1/1	0.84	0.10	57,57,57,57	0
5	CL	D	3000	1/1	0.84	0.39	61,61,61,61	0
4	SO4	B	1546	5/5	0.85	0.34	126,127,127,128	0
3	NAG	D	701	14/15	0.86	0.26	91,100,105,108	0
4	SO4	A	1546	5/5	0.86	0.21	112,112,112,114	0
5	CL	C	3002	1/1	0.86	0.28	57,57,57,57	0
4	SO4	D	1545	5/5	0.86	0.35	118,120,120,121	0
4	SO4	B	1545	5/5	0.88	0.19	127,127,128,129	0
5	CL	D	3001	1/1	0.89	0.16	54,54,54,54	0
3	NAG	A	701	14/15	0.90	0.36	102,113,115,115	0
5	CL	C	1545	1/1	0.90	0.13	51,51,51,51	0
5	CL	D	3002	1/1	0.91	0.34	66,66,66,66	0
5	CL	C	3000	1/1	0.93	0.20	44,44,44,44	0
4	SO4	A	1545	5/5	0.94	0.13	113,113,115,117	0
4	SO4	C	1547	5/5	0.94	0.30	100,104,105,106	0
4	SO4	A	1547	5/5	0.94	0.30	100,101,102,102	0
4	SO4	D	1546	5/5	0.94	0.14	119,120,120,121	0
4	SO4	D	1544	5/5	0.95	0.12	63,64,65,69	0
4	SO4	A	1544	5/5	0.96	0.12	82,83,84,84	0
2	4OJ	D	600	11/12	0.97	0.31	32,61,73,73	0
2	4OJ	B	600	11/12	0.98	0.23	35,78,84,86	0
2	4OJ	C	600	11/12	0.98	0.24	23,55,61,61	0
4	SO4	C	1546	5/5	0.98	0.10	63,65,66,69	0
2	4OJ	A	600	11/12	0.98	0.21	35,75,83,84	0
4	SO4	B	1544	5/5	0.98	0.19	79,84,85,85	0

6.5 Other polymers [\(i\)](#)

There are no such residues in this entry.