



Full wwPDB X-ray Structure Validation Report ⓘ

May 15, 2020 – 05:21 am BST

PDB ID : 2B7P
Title : Crystal structure of quinolinic acid phosphoribosyltransferase from *Helicobacter pylori* with phthalic acid
Authors : Kim, M.K.; Im, Y.J.; Lee, J.H.; Eom, S.H.
Deposited on : 2005-10-05
Resolution : 2.51 Å(reported)

This is a Full wwPDB X-ray Structure Validation Report for a publicly released PDB entry.

We welcome your comments at validation@mail.wwpdb.org

A user guide is available at

<https://www.wwpdb.org/validation/2017/XrayValidationReportHelp>

with specific help available everywhere you see the ⓘ symbol.

The following versions of software and data (see [references ⓘ](#)) were used in the production of this report:

MolProbity : 4.02b-467
Mogul : 1.8.5 (274361), CSD as541be (2020)
Xtriage (Phenix) : 1.13
EDS : 2.11
Percentile statistics : 20191225.v01 (using entries in the PDB archive December 25th 2019)
Refmac : 5.8.0158
CCP4 : 7.0.044 (Gargrove)
Ideal geometry (proteins) : Engh & Huber (2001)
Ideal geometry (DNA, RNA) : Parkinson et al. (1996)
Validation Pipeline (wwPDB-VP) : 2.11

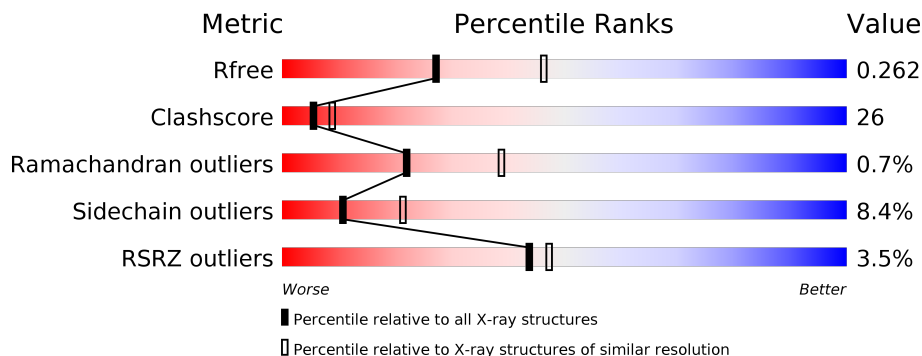
1 Overall quality at a glance

The following experimental techniques were used to determine the structure:

X-RAY DIFFRACTION

The reported resolution of this entry is 2.51 Å.

Percentile scores (ranging between 0-100) for global validation metrics of the entry are shown in the following graphic. The table shows the number of entries on which the scores are based.



Metric	Whole archive (#Entries)	Similar resolution (#Entries, resolution range(Å))
R_{free}	130704	4661 (2.50-2.50)
Clashscore	141614	5346 (2.50-2.50)
Ramachandran outliers	138981	5231 (2.50-2.50)
Sidechain outliers	138945	5233 (2.50-2.50)
RSRZ outliers	127900	4559 (2.50-2.50)

The table below summarises the geometric issues observed across the polymeric chains and their fit to the electron density. The red, orange, yellow and green segments on the lower bar indicate the fraction of residues that contain outliers for ≥ 3 , 2, 1 and 0 types of geometric quality criteria respectively. A grey segment represents the fraction of residues that are not modelled. The numeric value for each fraction is indicated below the corresponding segment, with a dot representing fractions $\leq 5\%$. The upper red bar (where present) indicates the fraction of residues that have poor fit to the electron density. The numeric value is given above the bar.

Mol	Chain	Length	Quality of chain
1	A	273	 67% 29% •
1	B	273	 % 62% 33% 5%
1	C	273	 10% 53% 38% 7% •

2 Entry composition [i](#)

There are 4 unique types of molecules in this entry. The entry contains 6624 atoms, of which 0 are hydrogens and 0 are deuteriums.

In the tables below, the ZeroOcc column contains the number of atoms modelled with zero occupancy, the AltConf column contains the number of residues with at least one atom in alternate conformation and the Trace column contains the number of residues modelled with at most 2 atoms.

- Molecule 1 is a protein called Probable nicotinate-nucleotide pyrophosphorylase.

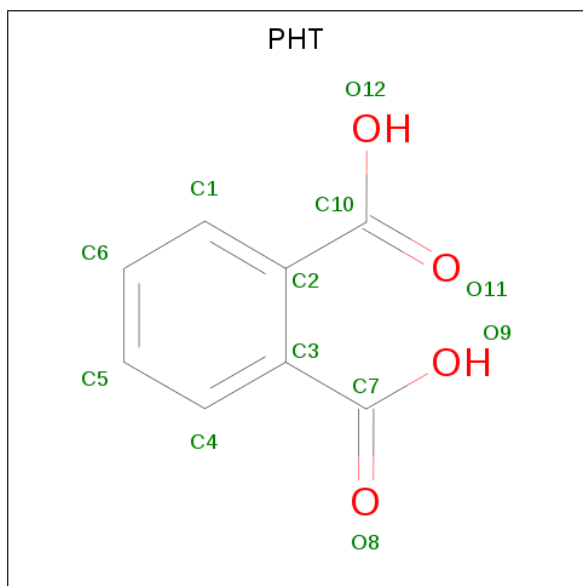
Mol	Chain	Residues	Atoms					ZeroOcc	AltConf	Trace
			Total	C	N	O	S			
1	A	273	Total 2161	C 1368	N 377	O 403	S 13	0	0	0
1	B	273	Total 2161	C 1368	N 377	O 403	S 13	0	0	0
1	C	273	Total 2161	C 1368	N 377	O 403	S 13	0	0	0

- Molecule 2 is SULFATE ION (three-letter code: SO4) (formula: O₄S).



Mol	Chain	Residues	Atoms			ZeroOcc	AltConf
			Total	O	S		
2	A	1	Total 5	O 4	S 1	0	0
2	B	1	Total 5	O 4	S 1	0	0
2	C	1	Total 5	O 4	S 1	0	0

- Molecule 3 is PHTHALIC ACID (three-letter code: PHT) (formula: C₈H₆O₄).



Mol	Chain	Residues	Atoms			ZeroOcc	AltConf
3	A	1	Total	C	O	0	0
			12	8	4		
3	B	1	Total	C	O	0	0
			12	8	4		
3	C	1	Total	C	O	0	0
			12	8	4		

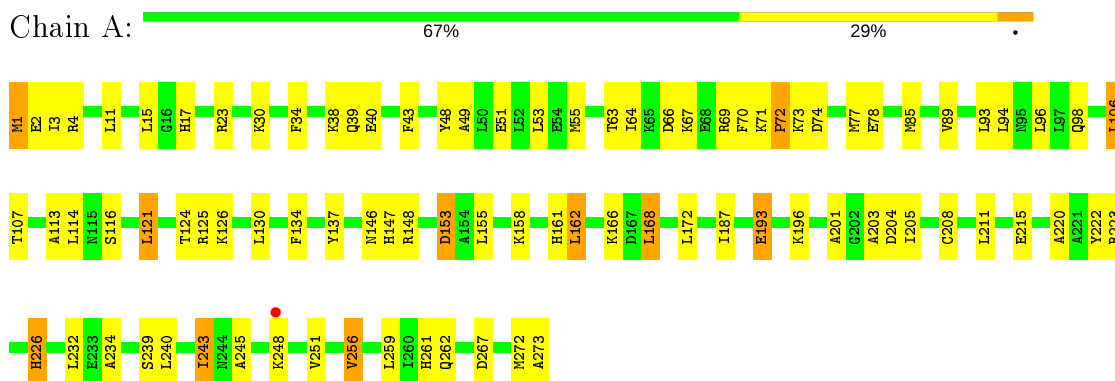
- Molecule 4 is water.

Mol	Chain	Residues	Atoms		ZeroOcc	AltConf
4	A	43	Total	O	0	0
			43	43		
4	B	30	Total	O	0	0
			30	30		
4	C	17	Total	O	0	0
			17	17		

3 Residue-property plots [i](#)

These plots are drawn for all protein, RNA and DNA chains in the entry. The first graphic for a chain summarises the proportions of the various outlier classes displayed in the second graphic. The second graphic shows the sequence view annotated by issues in geometry and electron density. Residues are color-coded according to the number of geometric quality criteria for which they contain at least one outlier: green = 0, yellow = 1, orange = 2 and red = 3 or more. A red dot above a residue indicates a poor fit to the electron density ($RSRZ > 2$). Stretches of 2 or more consecutive residues without any outlier are shown as a green connector. Residues present in the sample, but not in the model, are shown in grey.

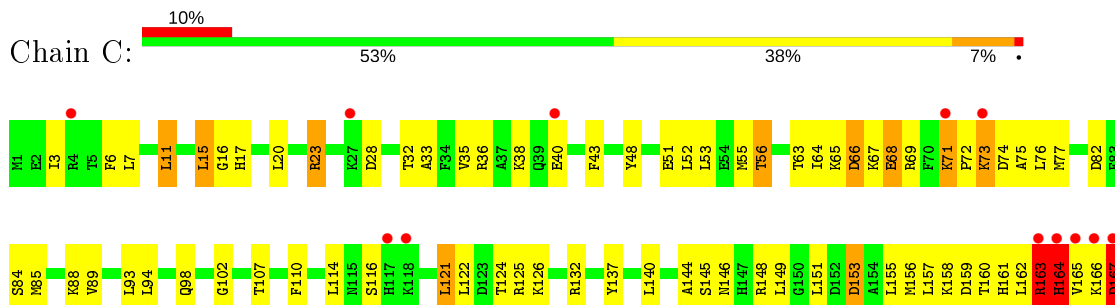
- Molecule 1: Probable nicotinate-nucleotide pyrophosphorylase

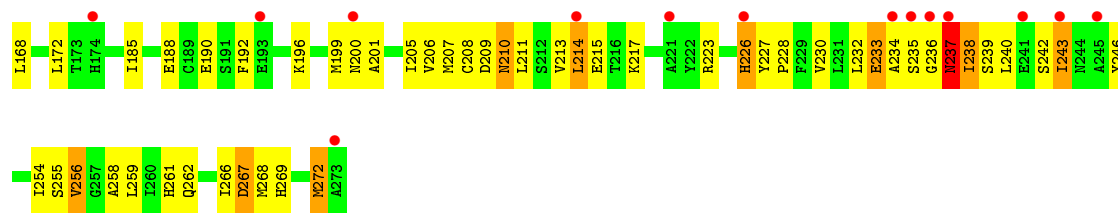


- Molecule 1: Probable nicotinate-nucleotide pyrophosphorylase



- Molecule 1: Probable nicotinate-nucleotide pyrophosphorylase





4 Data and refinement statistics

Property	Value	Source
Space group	P 41 21 2	Depositor
Cell constants a, b, c, α , β , γ	149.59Å 149.59Å 146.25Å 90.00° 90.00° 90.00°	Depositor
Resolution (Å)	20.00 – 2.51 30.07 – 2.51	Depositor EDS
% Data completeness (in resolution range)	88.4 (20.00-2.51) 93.6 (30.07-2.51)	Depositor EDS
R_{merge}	(Not available)	Depositor
R_{sym}	(Not available)	Depositor
$\langle I/\sigma(I) \rangle$ ¹	5.09 (at 2.51Å)	Xtrriage
Refinement program	CNS 1.1	Depositor
R, R_{free}	0.228 , 0.260 0.234 , 0.262	Depositor DCC
R_{free} test set	9090 reflections (9.48%)	wwPDB-VP
Wilson B-factor (Å ²)	36.8	Xtrriage
Anisotropy	0.353	Xtrriage
Bulk solvent k_{sol} (e/Å ³), B_{sol} (Å ²)	0.35 , 44.9	EDS
L-test for twinning ²	$\langle L \rangle = 0.48$, $\langle L^2 \rangle = 0.31$	Xtrriage
Estimated twinning fraction	0.017 for -h,-l,-k 0.013 for l,-k,h	Xtrriage
F_o, F_c correlation	0.92	EDS
Total number of atoms	6624	wwPDB-VP
Average B, all atoms (Å ²)	43.0	wwPDB-VP

Xtrriage's analysis on translational NCS is as follows: *The largest off-origin peak in the Patterson function is 3.11% of the height of the origin peak. No significant pseudotranslation is detected.*

¹ Intensities estimated from amplitudes.

² Theoretical values of $\langle |L| \rangle$, $\langle L^2 \rangle$ for acentric reflections are 0.5, 0.333 respectively for untwinned datasets, and 0.375, 0.2 for perfectly twinned datasets.

5 Model quality i

5.1 Standard geometry i

Bond lengths and bond angles in the following residue types are not validated in this section: SO4, PHT

The Z score for a bond length (or angle) is the number of standard deviations the observed value is removed from the expected value. A bond length (or angle) with $|Z| > 5$ is considered an outlier worth inspection. RMSZ is the root-mean-square of all Z scores of the bond lengths (or angles).

Mol	Chain	Bond lengths		Bond angles	
		RMSZ	# Z >5	RMSZ	# Z >5
1	A	0.45	1/2193 (0.0%)	0.68	1/2942 (0.0%)
1	B	0.40	0/2193	0.68	1/2942 (0.0%)
1	C	1.18	12/2193 (0.5%)	1.25	17/2942 (0.6%)
All	All	0.77	13/6579 (0.2%)	0.91	19/8826 (0.2%)

Chiral center outliers are detected by calculating the chiral volume of a chiral center and verifying if the center is modelled as a planar moiety or with the opposite hand. A planarity outlier is detected by checking planarity of atoms in a peptide group, atoms in a mainchain group or atoms of a sidechain that are expected to be planar.

Mol	Chain	#Chirality outliers	#Planarity outliers
1	B	0	1
1	C	2	4
All	All	2	5

All (13) bond length outliers are listed below:

Mol	Chain	Res	Type	Atoms	Z	Observed(Å)	Ideal(Å)
1	C	164	HIS	CB-CG	-31.53	0.93	1.50
1	C	237	ASN	C-N	-21.44	0.84	1.34
1	C	237	ASN	C-O	18.05	1.57	1.23
1	C	237	ASN	CB-CG	-12.08	1.23	1.51
1	C	68	GLU	CB-CG	-11.62	1.30	1.52
1	C	71	LYS	C-N	11.51	1.56	1.34
1	C	66	ASP	CB-CG	10.23	1.73	1.51
1	C	163	ARG	C-N	-7.76	1.16	1.34
1	C	233	GLU	C-N	-7.22	1.17	1.34
1	C	16	GLY	C-N	-6.73	1.18	1.34
1	C	233	GLU	N-CA	6.01	1.58	1.46
1	C	236	GLY	C-N	-5.55	1.21	1.34
1	A	72	PRO	N-CD	5.50	1.55	1.47

All (19) bond angle outliers are listed below:

Mol	Chain	Res	Type	Atoms	Z	Observed(°)	Ideal(°)
1	C	237	ASN	O-C-N	-39.55	59.41	122.70
1	C	237	ASN	CA-C-N	17.44	155.58	117.20
1	C	164	HIS	CB-CA-C	-14.93	80.54	110.40
1	C	164	HIS	CA-CB-CG	13.23	136.09	113.60
1	C	238	ILE	CA-CB-CG1	10.99	131.88	111.00
1	C	237	ASN	CA-C-O	-10.30	98.47	120.10
1	C	236	GLY	C-N-CA	9.91	146.48	121.70
1	B	273	ALA	CA-C-O	9.75	140.57	120.10
1	C	237	ASN	C-N-CA	9.51	145.47	121.70
1	C	163	ARG	O-C-N	-8.52	109.07	122.70
1	C	237	ASN	N-CA-CB	8.10	125.17	110.60
1	C	237	ASN	CB-CA-C	7.70	125.81	110.40
1	C	68	GLU	CA-CB-CG	6.75	128.26	113.40
1	C	233	GLU	CB-CA-C	-6.48	97.43	110.40
1	C	66	ASP	CB-CG-OD1	6.03	123.72	118.30
1	C	163	ARG	CA-C-N	5.61	129.54	117.20
1	C	66	ASP	CB-CG-OD2	-5.43	113.42	118.30
1	C	237	ASN	CB-CG-OD1	-5.19	111.22	121.60
1	A	72	PRO	N-CA-CB	5.08	109.40	103.30

All (2) chirality outliers are listed below:

Mol	Chain	Res	Type	Atom
1	C	237	ASN	CA
1	C	238	ILE	CB

All (5) planarity outliers are listed below:

Mol	Chain	Res	Type	Group
1	B	272	MET	Mainchain
1	C	163	ARG	Peptide
1	C	167	ASP	Mainchain,Peptide
1	C	237	ASN	Mainchain

5.2 Too-close contacts

In the following table, the Non-H and H(model) columns list the number of non-hydrogen atoms and hydrogen atoms in the chain respectively. The H(added) column lists the number of hydrogen atoms added and optimized by MolProbity. The Clashes column lists the number of clashes within the asymmetric unit, whereas Symm-Clashes lists symmetry related clashes.

Mol	Chain	Non-H	H(model)	H(added)	Clashes	Symm-Clashes
1	A	2161	0	2207	77	0
1	B	2161	0	2207	106	0
1	C	2161	0	2202	169	0
2	A	5	0	0	0	0
2	B	5	0	0	0	0
2	C	5	0	0	0	0
3	A	12	0	4	0	0
3	B	12	0	4	0	0
3	C	12	0	4	0	0
4	A	43	0	0	3	0
4	B	30	0	0	2	0
4	C	17	0	0	1	0
All	All	6624	0	6628	339	0

The all-atom clashscore is defined as the number of clashes found per 1000 atoms (including hydrogen atoms). The all-atom clashscore for this structure is 26.

All (339) close contacts within the same asymmetric unit are listed below, sorted by their clash magnitude.

Atom-1	Atom-2	Interatomic distance (Å)	Clash overlap (Å)
1:C:235:SER:CB	1:C:238:ILE:CD1	1.76	1.58
1:C:235:SER:CB	1:C:238:ILE:HD11	1.20	1.55
1:C:235:SER:HB3	1:C:238:ILE:CD1	1.29	1.47
1:C:164:HIS:CD2	1:C:164:HIS:CB	2.02	1.42
1:C:235:SER:OG	1:C:255:SER:O	1.54	1.25
1:C:235:SER:CB	1:C:238:ILE:HD12	1.75	1.15
1:C:164:HIS:CB	1:C:164:HIS:ND1	2.08	1.14
1:C:235:SER:HB2	1:C:238:ILE:CD1	1.59	1.11
1:C:11:LEU:CD2	1:C:15:LEU:HD21	1.84	1.07
1:C:164:HIS:CG	1:C:164:HIS:CA	2.36	1.07
1:C:235:SER:CA	1:C:238:ILE:HD11	1.85	1.06
1:C:11:LEU:HD22	1:C:15:LEU:HD21	1.06	1.04
1:C:164:HIS:CG	1:C:164:HIS:CB	0.93	0.97
1:A:261:HIS:HD2	1:A:262:GLN:HE21	1.08	0.96
1:C:164:HIS:CG	1:C:164:HIS:HB2	1.48	0.94
1:A:23:ARG:HH21	1:C:140:LEU:HD11	1.32	0.94
1:C:164:HIS:HB3	1:C:164:HIS:CG	1.48	0.93
1:B:113:ALA:HB3	1:B:243:ILE:HD11	1.50	0.93
1:C:238:ILE:HD13	1:C:254:ILE:HG23	1.50	0.91
1:B:158:LYS:H	1:B:161:HIS:HD2	1.13	0.91
1:C:235:SER:HB2	1:C:238:ILE:HD12	1.41	0.91
1:C:238:ILE:CD1	1:C:254:ILE:HG23	2.01	0.90

Continued on next page...

Continued from previous page...

Atom-1	Atom-2	Interatomic distance (Å)	Clash overlap (Å)
1:C:238:ILE:HD13	1:C:254:ILE:CG2	2.01	0.90
1:A:63:THR:HG23	1:A:77:MET:HG2	1.54	0.90
1:C:208:CYS:HB2	1:C:234:ALA:CB	2.01	0.90
1:C:235:SER:HB2	1:C:238:ILE:CG1	2.01	0.90
1:A:23:ARG:HH22	1:C:146:ASN:HD22	1.19	0.89
1:C:6:PHE:HD2	1:C:7:LEU:HD12	1.36	0.89
1:A:146:ASN:ND2	1:B:23:ARG:HH22	1.71	0.88
1:C:71:LYS:HB3	1:C:72:PRO:HD2	1.54	0.88
1:B:158:LYS:H	1:B:161:HIS:CD2	1.95	0.85
1:A:261:HIS:CD2	1:A:262:GLN:HE21	1.95	0.85
1:C:124:THR:HG22	1:C:126:LYS:H	1.41	0.85
1:C:208:CYS:HB2	1:C:234:ALA:HB1	1.57	0.84
1:C:157:LEU:HB3	1:C:162:LEU:HD21	1.60	0.83
1:C:11:LEU:HD22	1:C:15:LEU:CD2	2.00	0.83
1:B:124:THR:HG22	1:B:125:ARG:N	1.93	0.83
1:B:261:HIS:HD2	1:B:262:GLN:HE21	1.23	0.83
1:B:1:MET:H3	1:B:4:ARG:HD2	1.45	0.81
1:C:63:THR:HG22	1:C:64:ILE:O	1.80	0.81
1:C:124:THR:HG22	1:C:125:ARG:N	1.96	0.81
1:A:187:ILE:HD13	1:A:203:ALA:HB2	1.64	0.80
1:B:1:MET:HB2	1:B:4:ARG:NH1	1.97	0.79
1:C:124:THR:CG2	1:C:125:ARG:H	1.96	0.79
1:A:23:ARG:NH2	1:C:146:ASN:HD22	1.82	0.78
1:C:238:ILE:CD1	1:C:254:ILE:CG2	2.60	0.78
1:A:146:ASN:HD22	1:B:23:ARG:HH22	1.28	0.78
1:B:261:HIS:CD2	1:B:262:GLN:HE21	2.02	0.77
1:B:140:LEU:HG	1:B:146:ASN:HD21	1.47	0.77
1:C:124:THR:CG2	1:C:125:ARG:N	2.48	0.77
1:A:124:THR:HG22	1:A:126:LYS:H	1.50	0.76
1:C:235:SER:CB	1:C:238:ILE:CG1	2.60	0.76
1:C:235:SER:HB2	1:C:238:ILE:HG13	1.67	0.75
1:C:214:LEU:HD12	1:C:214:LEU:H	1.51	0.75
1:C:71:LYS:O	1:C:74:ASP:HB2	1.87	0.74
1:A:23:ARG:NH2	1:C:140:LEU:HD11	2.01	0.74
1:C:124:THR:HG22	1:C:126:LYS:N	2.02	0.74
1:C:164:HIS:CD2	1:C:164:HIS:HB2	1.98	0.74
1:A:208:CYS:HB3	1:A:211:LEU:HD12	1.70	0.73
1:C:71:LYS:HB3	1:C:72:PRO:CD	2.19	0.73
1:B:223:ARG:HB3	1:B:223:ARG:HH11	1.53	0.73
1:B:53:LEU:O	1:B:56:THR:HG22	1.89	0.73
1:C:20:LEU:O	1:C:23:ARG:HG3	1.87	0.73

Continued on next page...

Continued from previous page...

Atom-1	Atom-2	Interatomic distance (Å)	Clash overlap (Å)
1:B:1:MET:HB2	1:B:4:ARG:HH11	1.54	0.73
1:A:124:THR:HG22	1:A:125:ARG:N	2.02	0.72
1:B:124:THR:HG22	1:B:125:ARG:H	1.52	0.72
1:B:39:GLN:NE2	1:B:267:ASP:H	1.87	0.72
1:B:146:ASN:HD22	1:C:23:ARG:HH22	1.38	0.72
1:A:256:VAL:HG22	1:A:259:LEU:HG	1.70	0.72
1:B:124:THR:CG2	1:B:125:ARG:H	2.03	0.72
1:B:146:ASN:ND2	1:C:23:ARG:HH22	1.88	0.72
1:C:121:LEU:HD22	1:C:259:LEU:HD11	1.72	0.71
1:C:158:LYS:HG2	1:C:161:HIS:CD2	2.24	0.71
1:C:235:SER:HB3	1:C:238:ILE:HD11	0.73	0.71
1:A:1:MET:HB3	1:A:4:ARG:HG3	1.72	0.71
1:A:43:PHE:O	1:A:66:ASP:O	2.08	0.71
1:B:113:ALA:CB	1:B:243:ILE:HD11	2.20	0.71
1:C:52:LEU:O	1:C:56:THR:HB	1.91	0.71
1:C:235:SER:HB3	1:C:238:ILE:HD12	1.45	0.70
1:A:124:THR:CG2	1:A:125:ARG:N	2.56	0.69
1:C:190:GLU:O	1:C:211:LEU:HD21	1.92	0.69
1:C:158:LYS:H	1:C:161:HIS:HD2	1.38	0.69
1:B:124:THR:CG2	1:B:125:ARG:N	2.55	0.68
1:A:72:PRO:O	1:A:73:LYS:HB2	1.92	0.68
1:C:11:LEU:CD2	1:C:15:LEU:CD2	2.68	0.68
1:B:15:LEU:H	1:B:15:LEU:HD22	1.57	0.67
1:C:235:SER:CB	1:C:255:SER:O	2.41	0.67
1:B:158:LYS:HG2	1:B:161:HIS:CD2	2.29	0.67
1:B:39:GLN:HE21	1:B:267:ASP:H	1.40	0.67
1:B:11:LEU:HD22	1:B:15:LEU:HD11	1.76	0.67
1:B:212:SER:OG	1:B:215:GLU:HB2	1.94	0.67
1:A:113:ALA:HB3	1:A:243:ILE:HD12	1.76	0.66
1:C:214:LEU:HD12	1:C:214:LEU:N	2.11	0.66
1:B:149:LEU:HD12	1:C:17:HIS:HB3	1.79	0.65
1:C:208:CYS:O	1:C:234:ALA:O	2.15	0.65
1:C:227:TYR:N	1:C:228:PRO:HD3	2.12	0.65
1:C:94:LEU:HB3	1:C:98:GLN:HE21	1.60	0.64
1:C:6:PHE:CD2	1:C:7:LEU:HD12	2.27	0.64
1:A:124:THR:CG2	1:A:125:ARG:H	2.10	0.64
1:C:192:PHE:CE2	1:C:196:LYS:HD2	2.33	0.64
1:C:53:LEU:HA	1:C:56:THR:HG22	1.80	0.64
1:B:148:ARG:HB2	1:B:153:ASP:HB3	1.80	0.63
1:C:107:THR:HA	1:C:259:LEU:HD22	1.79	0.63
1:B:79:ILE:HD11	1:B:270:MET:CE	2.29	0.63

Continued on next page...

Continued from previous page...

Atom-1	Atom-2	Interatomic distance (Å)	Clash overlap (Å)
1:C:157:LEU:HB3	1:C:162:LEU:CD2	2.28	0.63
1:A:240:LEU:HD23	1:A:243:ILE:HD11	1.80	0.63
1:B:1:MET:N	1:B:4:ARG:HH11	1.96	0.63
1:C:165:VAL:HG12	1:C:167:ASP:O	1.98	0.62
1:C:121:LEU:CD2	1:C:259:LEU:HD11	2.29	0.62
1:A:4:ARG:HG2	1:A:51:GLU:OE2	1.99	0.62
1:B:124:THR:HG22	1:B:126:LYS:H	1.64	0.62
1:C:140:LEU:HG	1:C:146:ASN:HD21	1.64	0.62
1:A:63:THR:HG22	1:A:64:ILE:O	2.00	0.62
1:C:158:LYS:HG2	1:C:161:HIS:HD2	1.65	0.61
1:B:1:MET:HB3	1:B:4:ARG:HG3	1.81	0.61
1:C:140:LEU:HG	1:C:146:ASN:ND2	2.16	0.61
1:B:140:LEU:HG	1:B:146:ASN:ND2	2.16	0.61
1:B:223:ARG:NH1	1:B:223:ARG:HB3	2.15	0.61
1:A:240:LEU:HA	1:A:243:ILE:HD11	1.83	0.60
1:B:256:VAL:HG22	1:B:259:LEU:HG	1.83	0.60
1:B:8:GLU:O	1:B:12:LYS:HG2	2.01	0.60
1:C:69:ARG:HH11	1:C:69:ARG:HG2	1.67	0.60
1:A:124:THR:HG22	1:A:126:LYS:N	2.17	0.60
1:C:210:ASN:C	1:C:210:ASN:HD22	2.03	0.60
1:C:155:LEU:CD2	1:C:157:LEU:HG	2.31	0.59
1:C:36:ARG:HH12	1:C:75:ALA:HB2	1.67	0.59
1:C:235:SER:HB3	1:C:254:ILE:HG23	1.85	0.59
1:C:72:PRO:O	1:C:73:LYS:HB2	2.03	0.59
1:A:94:LEU:HB3	1:A:98:GLN:HE21	1.67	0.58
1:C:148:ARG:HB2	1:C:153:ASP:HB3	1.85	0.58
1:B:187:ILE:HD12	1:B:203:ALA:HB2	1.85	0.58
1:C:158:LYS:H	1:C:161:HIS:CD2	2.19	0.58
1:C:214:LEU:H	1:C:214:LEU:CD1	2.16	0.58
1:C:66:ASP:O	1:C:67:LYS:HB2	2.03	0.58
1:A:130:LEU:N	1:A:130:LEU:HD12	2.19	0.58
1:B:106:LEU:HD12	1:B:259:LEU:HA	1.86	0.57
1:C:64:ILE:HD13	1:C:76:LEU:HD22	1.85	0.57
1:A:168:LEU:HD22	1:A:172:LEU:HG	1.87	0.57
1:A:1:MET:HG2	1:A:2:GLU:N	2.19	0.57
1:C:28:ASP:OD2	1:C:82:ASP:HB3	2.05	0.57
1:C:124:THR:HG23	1:C:125:ARG:H	1.70	0.56
1:A:72:PRO:O	1:A:73:LYS:CB	2.52	0.56
1:B:210:ASN:O	1:B:211:LEU:HD23	2.05	0.56
1:C:233:GLU:OE1	1:C:255:SER:OG	2.18	0.56
1:A:71:LYS:N	1:A:74:ASP:OD2	2.31	0.56

Continued on next page...

Continued from previous page...

Atom-1	Atom-2	Interatomic distance (Å)	Clash overlap (Å)
1:B:79:ILE:HD11	1:B:270:MET:HE2	1.88	0.56
1:C:85:MET:HE2	1:C:89:VAL:CG2	2.36	0.56
1:C:188:GLU:HG2	1:C:207:MET:SD	2.46	0.55
1:B:33:ALA:HB2	1:B:272:MET:HE3	1.88	0.55
1:C:155:LEU:HD22	1:C:157:LEU:HG	1.88	0.55
1:C:223:ARG:HD2	1:C:223:ARG:O	2.07	0.55
1:C:36:ARG:NH1	1:C:75:ALA:HB2	2.21	0.55
1:B:33:ALA:HB2	1:B:272:MET:CE	2.35	0.55
1:C:235:SER:HA	1:C:238:ILE:HD11	1.84	0.55
1:C:159:ASP:OD1	1:C:160:THR:N	2.40	0.55
1:C:199:MET:HB3	1:C:227:TYR:CD1	2.41	0.55
1:C:256:VAL:HG22	1:C:256:VAL:O	2.06	0.55
1:B:256:VAL:O	1:B:259:LEU:HG	2.07	0.54
1:B:52:LEU:O	1:B:56:THR:HB	2.08	0.54
1:A:114:LEU:CD1	1:A:116:SER:HB3	2.37	0.54
1:B:105:THR:O	1:B:108:SER:HB3	2.08	0.54
1:B:158:LYS:HG2	1:B:161:HIS:HD2	1.68	0.54
1:A:239:SER:O	1:A:243:ILE:HG12	2.08	0.54
1:B:11:LEU:HD22	1:B:15:LEU:CD1	2.38	0.54
1:C:33:ALA:HB2	1:C:272:MET:CE	2.38	0.54
1:C:3:ILE:O	1:C:7:LEU:HD13	2.07	0.54
1:A:148:ARG:HB2	1:A:153:ASP:HB3	1.90	0.53
1:A:43:PHE:CD2	1:A:64:ILE:HG13	2.44	0.53
1:C:124:THR:HG22	1:C:125:ARG:H	1.64	0.53
1:C:192:PHE:HE2	1:C:196:LYS:HD2	1.73	0.53
1:C:213:VAL:HG12	1:C:217:LYS:HE3	1.90	0.53
1:C:165:VAL:HG12	1:C:166:LYS:N	2.23	0.53
1:A:168:LEU:HD13	1:A:201:ALA:CB	2.38	0.53
1:B:56:THR:HG23	1:B:58:ILE:HG13	1.91	0.53
1:C:51:GLU:O	1:C:55:MET:HG2	2.09	0.53
1:B:121:LEU:HD11	1:B:256:VAL:HG13	1.91	0.53
1:B:235:SER:HB3	1:B:255:SER:OG	2.08	0.52
1:C:125:ARG:NH1	1:C:151:LEU:HD21	2.24	0.52
1:C:85:MET:HE2	1:C:89:VAL:HG23	1.92	0.52
1:B:243:ILE:HG13	1:B:244:ASN:N	2.25	0.52
1:A:146:ASN:HD22	1:B:23:ARG:NH2	2.03	0.52
1:C:165:VAL:CG1	1:C:167:ASP:O	2.57	0.52
1:C:223:ARG:HB2	1:C:232:LEU:HD11	1.91	0.52
1:A:23:ARG:NH2	1:C:146:ASN:ND2	2.56	0.51
1:B:124:THR:HG22	1:B:126:LYS:N	2.25	0.51
1:A:121:LEU:HD21	1:A:256:VAL:HG13	1.92	0.51

Continued on next page...

Continued from previous page...

Atom-1	Atom-2	Interatomic distance (Å)	Clash overlap (Å)
1:C:208:CYS:HB2	1:C:234:ALA:HB2	1.91	0.51
1:B:223:ARG:O	1:B:226:HIS:O	2.28	0.51
1:B:1:MET:CB	1:B:4:ARG:HH11	2.23	0.51
1:C:162:LEU:O	1:C:164:HIS:N	2.44	0.51
1:A:158:LYS:O	1:A:162:LEU:HD22	2.11	0.51
1:C:66:ASP:O	1:C:67:LYS:CB	2.58	0.51
1:C:242:SER:O	1:C:246:TYR:HD1	1.93	0.51
1:C:196:LYS:O	1:C:200:ASN:ND2	2.44	0.51
1:B:168:LEU:O	1:B:169:LYS:C	2.49	0.50
1:A:220:ALA:HA	1:A:232:LEU:CD1	2.41	0.50
1:C:69:ARG:HG2	1:C:69:ARG:NH1	2.26	0.50
1:B:261:HIS:HD2	1:B:262:GLN:NE2	2.01	0.50
1:C:207:MET:HE3	1:C:233:GLU:OE2	2.11	0.50
1:A:85:MET:CE	1:A:89:VAL:HG23	2.42	0.50
1:B:172:LEU:HD11	1:B:187:ILE:HD11	1.93	0.50
1:C:272:MET:HE2	1:C:272:MET:HA	1.94	0.50
1:B:127:THR:HG22	1:B:260:ILE:HD13	1.93	0.50
1:A:113:ALA:HB3	1:A:243:ILE:CD1	2.41	0.50
1:C:155:LEU:HD23	1:C:156:MET:N	2.27	0.50
1:C:72:PRO:O	1:C:73:LYS:CB	2.60	0.50
1:A:256:VAL:O	1:A:256:VAL:HG22	2.12	0.49
1:B:1:MET:H1	1:B:4:ARG:HH11	1.60	0.49
1:C:239:SER:O	1:C:243:ILE:HG12	2.12	0.49
1:B:76:LEU:HD12	1:B:268:MET:CE	2.42	0.49
1:C:65:LYS:HB3	1:C:65:LYS:NZ	2.26	0.49
1:A:158:LYS:H	1:A:161:HIS:CD2	2.30	0.49
1:C:107:THR:HG23	1:C:259:LEU:HD13	1.94	0.49
1:C:268:MET:O	1:C:269:HIS:HB3	2.13	0.49
1:B:168:LEU:O	1:B:171:PHE:N	2.46	0.49
1:C:213:VAL:CG1	1:C:217:LYS:HE3	2.42	0.49
1:C:258:ALA:O	1:C:262:GLN:HB2	2.12	0.49
1:C:35:VAL:HB	1:C:77:MET:HB2	1.95	0.49
1:C:38:LYS:HB2	1:C:267:ASP:HB3	1.94	0.48
1:C:261:HIS:CD2	1:C:262:GLN:HG2	2.48	0.48
1:A:85:MET:HE3	1:A:89:VAL:HG23	1.96	0.48
1:C:114:LEU:HD13	1:C:116:SER:HB3	1.96	0.48
1:C:125:ARG:HG2	1:C:132:ARG:NH2	2.28	0.48
1:A:94:LEU:O	1:A:98:GLN:HG3	2.13	0.48
1:C:155:LEU:HD23	1:C:155:LEU:C	2.33	0.48
1:A:261:HIS:CD2	1:A:262:GLN:HG2	2.49	0.48
1:A:51:GLU:O	1:A:55:MET:HB2	2.14	0.48

Continued on next page...

Continued from previous page...

Atom-1	Atom-2	Interatomic distance (Å)	Clash overlap (Å)
1:A:1:MET:HG2	1:A:2:GLU:H	1.77	0.47
1:B:40:GLU:HG3	4:B:2032:HOH:O	2.14	0.47
1:B:51:GLU:O	1:B:55:MET:HG2	2.13	0.47
1:C:240:LEU:HA	1:C:243:ILE:HD11	1.96	0.47
1:C:235:SER:OG	1:C:255:SER:C	2.45	0.47
1:B:168:LEU:HD11	1:B:187:ILE:HD13	1.97	0.47
1:B:190:GLU:O	1:B:211:LEU:HD21	2.14	0.47
1:A:1:MET:HB3	1:A:4:ARG:CG	2.42	0.47
1:B:93:LEU:O	1:B:96:LEU:HB3	2.15	0.47
1:B:79:ILE:HD11	1:B:270:MET:HE1	1.96	0.47
1:C:158:LYS:N	1:C:161:HIS:HD2	2.10	0.47
1:C:159:ASP:O	1:C:163:ARG:N	2.48	0.47
1:A:196:LYS:HG3	1:A:222:TYR:CE2	2.50	0.46
1:B:1:MET:HG2	1:B:2:GLU:H	1.79	0.46
1:B:38:LYS:HB2	1:B:267:ASP:HB3	1.97	0.46
1:C:63:THR:HG23	1:C:77:MET:HG2	1.98	0.46
1:C:223:ARG:C	1:C:223:ARG:HD2	2.35	0.46
1:C:40:GLU:CD	1:C:40:GLU:N	2.69	0.46
1:C:33:ALA:HB2	1:C:272:MET:HE1	1.97	0.46
1:C:172:LEU:HD22	1:C:185:ILE:HG21	1.97	0.46
1:C:209:ASP:O	1:C:210:ASN:ND2	2.49	0.46
1:A:67:LYS:O	1:A:69:ARG:NH1	2.49	0.46
1:C:94:LEU:O	1:C:98:GLN:HG3	2.16	0.46
1:B:42:VAL:HG22	1:B:69:ARG:HD3	1.98	0.46
1:C:223:ARG:CB	1:C:232:LEU:HD11	2.46	0.46
1:B:256:VAL:O	1:B:256:VAL:HG22	2.15	0.45
1:C:205:ILE:HG22	1:C:206:VAL:N	2.30	0.45
1:C:165:VAL:CG1	1:C:166:LYS:N	2.79	0.45
1:A:106:LEU:O	1:A:106:LEU:HD22	2.17	0.45
1:A:124:THR:HG23	1:A:125:ARG:H	1.81	0.45
1:B:148:ARG:HB2	1:B:153:ASP:CB	2.47	0.45
1:A:147:HIS:HB3	4:A:2003:HOH:O	2.15	0.45
1:B:251:VAL:HG22	1:B:252:ASP:N	2.32	0.45
1:B:5:THR:O	1:B:9:ARG:HD3	2.17	0.45
1:B:15:LEU:HD22	1:B:15:LEU:N	2.29	0.45
1:C:114:LEU:CD1	1:C:116:SER:HB3	2.47	0.45
1:A:2:GLU:OE2	1:B:88:LYS:NZ	2.47	0.45
1:B:2:GLU:HG2	4:C:2009:HOH:O	2.16	0.45
1:C:227:TYR:O	1:C:230:VAL:HG12	2.17	0.45
1:B:103:ILE:CD1	1:B:135:GLU:HG2	2.46	0.44
1:A:1:MET:HB3	1:A:4:ARG:CD	2.47	0.44

Continued on next page...

Continued from previous page...

Atom-1	Atom-2	Interatomic distance (Å)	Clash overlap (Å)
1:B:125:ARG:HG2	1:B:132:ARG:CZ	2.47	0.44
1:C:43:PHE:CG	1:C:64:ILE:HD11	2.53	0.44
1:A:49:ALA:O	1:A:53:LEU:HG	2.17	0.44
1:A:272:MET:O	1:A:273:ALA:C	2.56	0.44
1:B:86:LEU:HD23	1:B:272:MET:CE	2.47	0.44
1:C:15:LEU:HG	1:C:15:LEU:H	1.58	0.44
1:C:40:GLU:CD	1:C:40:GLU:H	2.21	0.44
1:B:211:LEU:HB3	1:B:215:GLU:HB3	2.00	0.43
1:C:122:LEU:HA	1:C:145:SER:O	2.18	0.43
1:B:172:LEU:HD22	1:B:185:ILE:HD13	2.00	0.43
1:B:223:ARG:HD3	1:B:227:TYR:O	2.18	0.43
1:A:193:GLU:HA	1:A:193:GLU:OE1	2.17	0.43
1:B:243:ILE:HG13	1:B:244:ASN:H	1.82	0.43
1:C:53:LEU:O	1:C:56:THR:HG22	2.19	0.43
1:A:204:ASP:C	1:A:205:ILE:HG13	2.38	0.43
1:A:40:GLU:HA	1:A:70:PHE:O	2.18	0.43
1:C:11:LEU:O	1:C:15:LEU:HG	2.18	0.43
1:A:34:PHE:CE2	1:A:78:GLU:HG3	2.54	0.43
1:C:64:ILE:CD1	1:C:76:LEU:HD22	2.49	0.43
1:B:114:LEU:HD12	1:B:247:ALA:HB2	2.00	0.43
1:B:86:LEU:HD23	1:B:272:MET:HE1	2.01	0.43
1:A:245:ALA:HA	1:A:248:LYS:HE2	2.00	0.43
1:C:226:HIS:O	1:C:227:TYR:HB2	2.18	0.43
1:C:7:LEU:HD11	1:C:48:TYR:HD2	1.84	0.43
1:C:168:LEU:HB3	1:C:201:ALA:CB	2.49	0.43
1:C:155:LEU:C	1:C:155:LEU:CD2	2.86	0.43
1:B:96:LEU:HD12	1:B:134:PHE:CE1	2.54	0.42
1:C:121:LEU:HB3	1:C:144:ALA:HB1	2.00	0.42
1:A:3:ILE:HA	4:A:2025:HOH:O	2.19	0.42
1:C:84:SER:O	1:C:88:LYS:HG3	2.18	0.42
1:A:63:THR:HG22	1:A:64:ILE:N	2.34	0.42
1:C:256:VAL:HG22	1:C:259:LEU:HG	2.02	0.42
1:A:130:LEU:CD1	1:A:130:LEU:N	2.82	0.42
1:B:76:LEU:HD12	1:B:268:MET:HE1	2.01	0.42
1:B:72:PRO:O	1:B:73:LYS:HB2	2.19	0.42
1:B:91:ARG:HG3	1:B:95:ASN:ND2	2.34	0.42
1:A:39:GLN:NE2	1:A:267:ASP:H	2.18	0.42
1:A:223:ARG:O	1:A:226:HIS:O	2.36	0.42
1:C:121:LEU:HD21	1:C:256:VAL:HG13	2.01	0.42
1:A:38:LYS:HB2	1:A:267:ASP:HB3	2.01	0.42
1:B:5:THR:CG2	1:B:9:ARG:NE	2.83	0.42

Continued on next page...

Continued from previous page...

Atom-1	Atom-2	Interatomic distance (Å)	Clash overlap (Å)
1:C:102:GLY:HA2	1:C:266:ILE:HG12	2.02	0.42
1:B:53:LEU:HA	1:B:56:THR:HG22	2.02	0.42
1:A:234:ALA:HB2	1:A:251:VAL:HG11	2.02	0.41
1:B:125:ARG:HG2	1:B:132:ARG:NH2	2.35	0.41
1:C:33:ALA:HB2	1:C:272:MET:HE2	2.01	0.41
1:A:223:ARG:HD2	1:A:223:ARG:C	2.41	0.41
1:C:85:MET:CE	1:C:89:VAL:HG23	2.50	0.41
1:B:1:MET:SD	1:B:3:ILE:HG12	2.61	0.41
1:C:223:ARG:O	1:C:226:HIS:O	2.39	0.41
1:B:147:HIS:HB3	4:B:2010:HOH:O	2.20	0.41
1:B:21:PHE:CZ	1:B:25:LEU:HD23	2.55	0.41
1:B:121:LEU:HD11	1:B:259:LEU:HD11	2.02	0.41
1:B:58:ILE:CD1	1:B:89:VAL:HG11	2.51	0.41
1:A:48:TYR:CZ	1:A:134:PHE:HD1	2.38	0.41
1:B:192:PHE:C	1:B:192:PHE:CD2	2.94	0.41
1:C:210:ASN:O	1:C:210:ASN:ND2	2.51	0.41
1:C:32:THR:HG22	1:C:33:ALA:N	2.36	0.41
1:B:115:ASN:C	1:B:115:ASN:HD22	2.25	0.41
1:B:1:MET:H1	1:B:4:ARG:NH1	2.19	0.41
1:C:227:TYR:N	1:C:228:PRO:CD	2.83	0.41
1:C:155:LEU:HD21	1:C:157:LEU:HG	2.01	0.40
1:C:172:LEU:HD12	1:C:201:ALA:HB1	2.02	0.40
1:A:17:HIS:HB3	1:C:149:LEU:HD12	2.03	0.40
1:B:261:HIS:CD2	1:B:262:GLN:HG2	2.57	0.40
1:B:1:MET:CB	1:B:4:ARG:HG3	2.50	0.40
1:B:76:LEU:HD12	1:B:268:MET:HE3	2.03	0.40
1:A:107:THR:HA	1:A:259:LEU:HD22	2.04	0.40
1:A:30:LYS:HD3	4:A:2029:HOH:O	2.20	0.40
1:B:84:SER:O	1:B:88:LYS:HG3	2.22	0.40
1:C:110:PHE:HB3	1:C:121:LEU:HD11	2.03	0.40

There are no symmetry-related clashes.

5.3 Torsion angles [i](#)

5.3.1 Protein backbone [i](#)

In the following table, the Percentiles column shows the percent Ramachandran outliers of the chain as a percentile score with respect to all X-ray entries followed by that with respect to entries of similar resolution.

The Analysed column shows the number of residues for which the backbone conformation was analysed, and the total number of residues.

Mol	Chain	Analysed	Favoured	Allowed	Outliers	Percentiles	
1	A	271/273 (99%)	256 (94%)	15 (6%)	0	100	100
1	B	271/273 (99%)	249 (92%)	20 (7%)	2 (1%)	22	39
1	C	271/273 (99%)	248 (92%)	19 (7%)	4 (2%)	10	18
All	All	813/819 (99%)	753 (93%)	54 (7%)	6 (1%)	22	39

All (6) Ramachandran outliers are listed below:

Mol	Chain	Res	Type
1	B	66	ASP
1	C	163	ARG
1	C	272	MET
1	C	73	LYS
1	C	237	ASN
1	B	236	GLY

5.3.2 Protein sidechains [i](#)

In the following table, the Percentiles column shows the percent sidechain outliers of the chain as a percentile score with respect to all X-ray entries followed by that with respect to entries of similar resolution.

The Analysed column shows the number of residues for which the sidechain conformation was analysed, and the total number of residues.

Mol	Chain	Analysed	Rotameric	Outliers	Percentiles	
1	A	233/233 (100%)	215 (92%)	18 (8%)	13	25
1	B	233/233 (100%)	211 (91%)	22 (9%)	8	17
1	C	233/233 (100%)	214 (92%)	19 (8%)	11	22
All	All	699/699 (100%)	640 (92%)	59 (8%)	11	21

All (59) residues with a non-rotameric sidechain are listed below:

Mol	Chain	Res	Type
1	A	1	MET
1	A	11	LEU
1	A	15	LEU
1	A	93	LEU

Continued on next page...

Continued from previous page...

Mol	Chain	Res	Type
1	A	96	LEU
1	A	106	LEU
1	A	121	LEU
1	A	137	TYR
1	A	153	ASP
1	A	155	LEU
1	A	162	LEU
1	A	166	LYS
1	A	168	LEU
1	A	193	GLU
1	A	215	GLU
1	A	226	HIS
1	A	243	ILE
1	A	256	VAL
1	B	9	ARG
1	B	11	LEU
1	B	15	LEU
1	B	27	LYS
1	B	56	THR
1	B	71	LYS
1	B	86	LEU
1	B	93	LEU
1	B	115	ASN
1	B	125	ARG
1	B	137	TYR
1	B	151	LEU
1	B	153	ASP
1	B	155	LEU
1	B	162	LEU
1	B	215	GLU
1	B	223	ARG
1	B	226	HIS
1	B	240	LEU
1	B	256	VAL
1	B	269	HIS
1	B	272	MET
1	C	11	LEU
1	C	15	LEU
1	C	23	ARG
1	C	56	THR
1	C	68	GLU
1	C	93	LEU

Continued on next page...

Continued from previous page...

Mol	Chain	Res	Type
1	C	121	LEU
1	C	137	TYR
1	C	153	ASP
1	C	164	HIS
1	C	167	ASP
1	C	210	ASN
1	C	214	LEU
1	C	215	GLU
1	C	226	HIS
1	C	237	ASN
1	C	243	ILE
1	C	256	VAL
1	C	267	ASP

Some sidechains can be flipped to improve hydrogen bonding and reduce clashes. All (23) such sidechains are listed below:

Mol	Chain	Res	Type
1	A	39	GLN
1	A	98	GLN
1	A	146	ASN
1	A	161	HIS
1	A	261	HIS
1	B	39	GLN
1	B	98	GLN
1	B	99	HIS
1	B	115	ASN
1	B	146	ASN
1	B	161	HIS
1	B	261	HIS
1	C	95	ASN
1	C	98	GLN
1	C	99	HIS
1	C	117	HIS
1	C	146	ASN
1	C	161	HIS
1	C	197	ASN
1	C	210	ASN
1	C	237	ASN
1	C	261	HIS
1	C	262	GLN

5.3.3 RNA [i](#)

There are no RNA molecules in this entry.

5.4 Non-standard residues in protein, DNA, RNA chains [i](#)

There are no non-standard protein/DNA/RNA residues in this entry.

5.5 Carbohydrates [i](#)

There are no carbohydrates in this entry.

5.6 Ligand geometry [i](#)

6 ligands are modelled in this entry.

In the following table, the Counts columns list the number of bonds (or angles) for which Mogul statistics could be retrieved, the number of bonds (or angles) that are observed in the model and the number of bonds (or angles) that are defined in the Chemical Component Dictionary. The Link column lists molecule types, if any, to which the group is linked. The Z score for a bond length (or angle) is the number of standard deviations the observed value is removed from the expected value. A bond length (or angle) with $|Z| > 2$ is considered an outlier worth inspection. RMSZ is the root-mean-square of all Z scores of the bond lengths (or angles).

Mol	Type	Chain	Res	Link	Bond lengths			Bond angles		
					Counts	RMSZ	# Z > 2	Counts	RMSZ	# Z > 2
3	PHT	C	1003	-	8,12,12	2.61	3 (37%)	8,16,16	1.56	2 (25%)
2	SO4	A	2001	-	4,4,4	0.43	0	6,6,6	1.15	0
3	PHT	A	1001	-	8,12,12	2.96	2 (25%)	8,16,16	1.50	2 (25%)
2	SO4	B	2002	-	4,4,4	0.32	0	6,6,6	1.14	0
3	PHT	B	1002	-	8,12,12	2.71	2 (25%)	8,16,16	1.67	2 (25%)
2	SO4	C	2003	1	4,4,4	0.41	0	6,6,6	1.08	0

In the following table, the Chirals column lists the number of chiral outliers, the number of chiral centers analysed, the number of these observed in the model and the number defined in the Chemical Component Dictionary. Similar counts are reported in the Torsion and Rings columns. '-' means no outliers of that kind were identified.

Mol	Type	Chain	Res	Link	Chirals	Torsions	Rings
3	PHT	C	1003	-	-	0/0/8/8	0/1/1/1
3	PHT	A	1001	-	-	0/0/8/8	0/1/1/1
3	PHT	B	1002	-	-	0/0/8/8	0/1/1/1

All (7) bond length outliers are listed below:

Mol	Chain	Res	Type	Atoms	Z	Observed(Å)	Ideal(Å)
3	A	1001	PHT	C3-C7	7.21	1.54	1.47
3	B	1002	PHT	C3-C7	6.58	1.53	1.47
3	C	1003	PHT	C3-C7	5.71	1.53	1.47
3	A	1001	PHT	C4-C3	3.52	1.45	1.40
3	C	1003	PHT	C4-C3	3.39	1.45	1.40
3	B	1002	PHT	C4-C3	3.16	1.44	1.40
3	C	1003	PHT	C2-C10	2.03	1.49	1.47

All (6) bond angle outliers are listed below:

Mol	Chain	Res	Type	Atoms	Z	Observed(°)	Ideal(°)
3	C	1003	PHT	C4-C3-C7	-3.09	115.61	120.20
3	B	1002	PHT	C4-C3-C7	-3.03	115.69	120.20
3	B	1002	PHT	C1-C2-C10	-2.52	116.45	120.20
3	A	1001	PHT	C4-C3-C7	-2.49	116.49	120.20
3	A	1001	PHT	C1-C2-C10	-2.34	116.72	120.20
3	C	1003	PHT	C1-C2-C10	-2.28	116.81	120.20

There are no chirality outliers.

There are no torsion outliers.

There are no ring outliers.

No monomer is involved in short contacts.

5.7 Other polymers [\(i\)](#)

There are no such residues in this entry.

5.8 Polymer linkage issues [\(i\)](#)

The following chains have linkage breaks:

Mol	Chain	Number of breaks
1	C	4

All chain breaks are listed below:

Model	Chain	Residue-1	Atom-1	Residue-2	Atom-2	Distance (Å)
1	C	16:GLY	C	17:HIS	N	1.18

Continued on next page...

Continued from previous page...

Model	Chain	Residue-1	Atom-1	Residue-2	Atom-2	Distance (Å)
1	C	233:GLU	C	234:ALA	N	1.17
1	C	163:ARG	C	164:HIS	N	1.16
1	C	237:ASN	C	238:ILE	N	0.84

6 Fit of model and data

6.1 Protein, DNA and RNA chains

In the following table, the column labelled ‘#RSRZ> 2’ contains the number (and percentage) of RSRZ outliers, followed by percent RSRZ outliers for the chain as percentile scores relative to all X-ray entries and entries of similar resolution. The OWAB column contains the minimum, median, 95th percentile and maximum values of the occupancy-weighted average B-factor per residue. The column labelled ‘Q< 0.9’ lists the number of (and percentage) of residues with an average occupancy less than 0.9.

Mol	Chain	Analysed	<RSRZ>	#RSRZ>2	OWAB(Å ²)	Q<0.9
1	A	273/273 (100%)	-0.27	1 (0%) 92 93	23, 35, 51, 62	0
1	B	273/273 (100%)	-0.12	2 (0%) 87 89	23, 39, 55, 66	0
1	C	273/273 (100%)	0.39	26 (9%) 8 8	33, 51, 77, 93	0
All	All	819/819 (100%)	0.00	29 (3%) 44 47	23, 41, 70, 93	0

All (29) RSRZ outliers are listed below:

Mol	Chain	Res	Type	RSRZ
1	C	235	SER	7.6
1	C	234	ALA	5.5
1	C	166	LYS	4.7
1	B	273	ALA	4.0
1	C	273	ALA	3.8
1	C	164	HIS	3.7
1	C	71	LYS	3.6
1	C	174	HIS	3.5
1	C	165	VAL	3.5
1	C	236	GLY	3.3
1	C	167	ASP	3.1
1	C	118	LYS	3.1
1	C	27	LYS	2.8
1	C	221	ALA	2.7
1	A	248	LYS	2.7
1	C	163	ARG	2.6
1	C	117	HIS	2.6
1	C	237	ASN	2.5
1	C	214	LEU	2.5
1	C	4	ARG	2.4
1	C	226	HIS	2.4
1	C	241	GLU	2.3
1	C	243	ILE	2.3

Continued on next page...

Continued from previous page...

Mol	Chain	Res	Type	RSRZ
1	C	73	LYS	2.2
1	C	245	ALA	2.2
1	C	200	ASN	2.1
1	C	193	GLU	2.1
1	B	225	ALA	2.1
1	C	40	GLU	2.0

6.2 Non-standard residues in protein, DNA, RNA chains [i](#)

There are no non-standard protein/DNA/RNA residues in this entry.

6.3 Carbohydrates [i](#)

There are no carbohydrates in this entry.

6.4 Ligands [i](#)

In the following table, the Atoms column lists the number of modelled atoms in the group and the number defined in the chemical component dictionary. The B-factors column lists the minimum, median, 95th percentile and maximum values of B factors of atoms in the group. The column labelled 'Q< 0.9' lists the number of atoms with occupancy less than 0.9.

Mol	Type	Chain	Res	Atoms	RSCC	RSR	B-factors(Å ²)	Q<0.9
3	PHT	C	1003	12/12	0.92	0.20	56,62,63,64	0
2	SO4	C	2003	5/5	0.93	0.15	58,60,61,61	0
3	PHT	B	1002	12/12	0.94	0.18	38,39,44,47	0
3	PHT	A	1001	12/12	0.96	0.18	33,34,41,43	0
2	SO4	B	2002	5/5	0.97	0.12	44,46,46,47	0
2	SO4	A	2001	5/5	0.98	0.08	54,55,57,57	0

6.5 Other polymers [i](#)

There are no such residues in this entry.