



Full wwPDB X-ray Structure Validation Report ⓘ

May 22, 2020 – 07:50 am BST

PDB ID : 6B6A
Title : Beta-Lactamase, 2secs timepoint, mixed, shards crystal form
Authors : Pandey, S.; Schmidt, M.
Deposited on : 2017-10-01
Resolution : 2.30 Å(reported)

This is a Full wwPDB X-ray Structure Validation Report for a publicly released PDB entry.

We welcome your comments at validation@mail.wwpdb.org

A user guide is available at

<https://www.wwpdb.org/validation/2017/XrayValidationReportHelp>

with specific help available everywhere you see the ⓘ symbol.

The following versions of software and data (see [references ⓘ](#)) were used in the production of this report:

MolProbity : 4.02b-467
Mogul : 1.8.5 (274361), CSD as541be (2020)
Xtriage (Phenix) : 1.13
EDS : 2.11
buster-report : 1.1.7 (2018)
Percentile statistics : 20191225.v01 (using entries in the PDB archive December 25th 2019)
Refmac : 5.8.0158
CCP4 : 7.0.044 (Gargrove)
Ideal geometry (proteins) : Engh & Huber (2001)
Ideal geometry (DNA, RNA) : Parkinson et al. (1996)
Validation Pipeline (wwPDB-VP) : 2.11

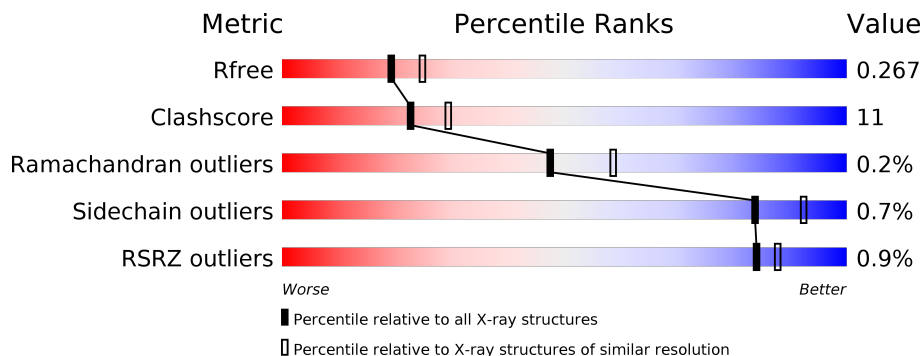
1 Overall quality at a glance

The following experimental techniques were used to determine the structure:

X-RAY DIFFRACTION

The reported resolution of this entry is 2.30 Å.

Percentile scores (ranging between 0-100) for global validation metrics of the entry are shown in the following graphic. The table shows the number of entries on which the scores are based.



Metric	Whole archive (#Entries)	Similar resolution (#Entries, resolution range(Å))
R_{free}	130704	5042 (2.30-2.30)
Clashscore	141614	5643 (2.30-2.30)
Ramachandran outliers	138981	5575 (2.30-2.30)
Sidechain outliers	138945	5575 (2.30-2.30)
RSRZ outliers	127900	4938 (2.30-2.30)

The table below summarises the geometric issues observed across the polymeric chains and their fit to the electron density. The red, orange, yellow and green segments on the lower bar indicate the fraction of residues that contain outliers for ≥ 3 , 2, 1 and 0 types of geometric quality criteria respectively. A grey segment represents the fraction of residues that are not modelled. The numeric value for each fraction is indicated below the corresponding segment, with a dot representing fractions $\leq 5\%$. The upper red bar (where present) indicates the fraction of residues that have poor fit to the electron density. The numeric value is given above the bar.

Mol	Chain	Length	Quality of chain
1	A	267	 2% 77% 22%
1	B	267	 77% 22%
1	C	267	 % 76% 23%
1	D	267	 76% 23%

2 Entry composition [i](#)

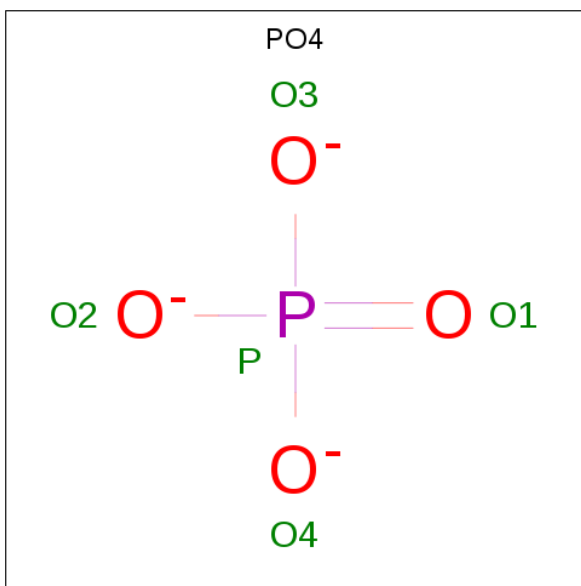
There are 5 unique types of molecules in this entry. The entry contains 8578 atoms, of which 0 are hydrogens and 0 are deuteriums.

In the tables below, the ZeroOcc column contains the number of atoms modelled with zero occupancy, the AltConf column contains the number of residues with at least one atom in alternate conformation and the Trace column contains the number of residues modelled with at most 2 atoms.

- Molecule 1 is a protein called Beta-lactamase.

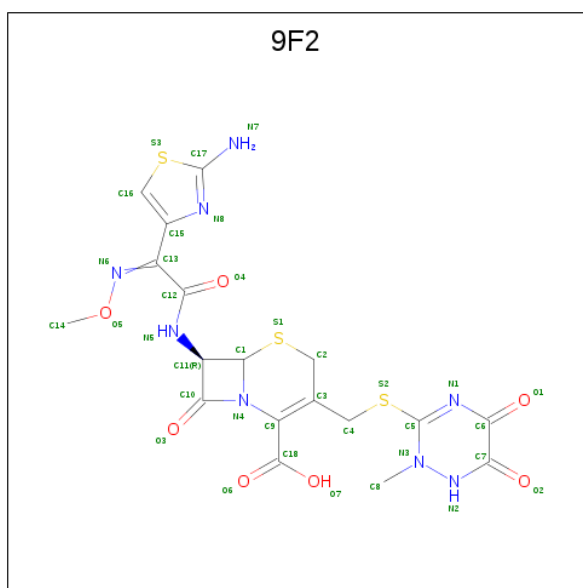
Mol	Chain	Residues	Atoms					ZeroOcc	AltConf	Trace
			Total	C	N	O	S			
1	A	265	Total 1988	C 1243	N 352	O 387	S 6	0	0	0
1	B	265	Total 1988	C 1243	N 352	O 387	S 6	0	0	0
1	C	265	Total 1988	C 1243	N 352	O 387	S 6	0	0	0
1	D	265	Total 1988	C 1243	N 352	O 387	S 6	0	0	0

- Molecule 2 is PHOSPHATE ION (three-letter code: PO4) (formula: O₄P).



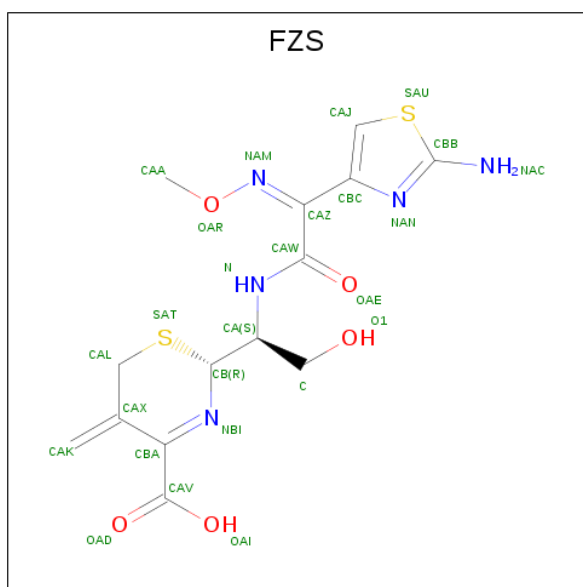
Mol	Chain	Residues	Atoms			ZeroOcc	AltConf
			Total	O	P		
2	A	1	Total 5	O 4	P 1	0	0
2	C	1	Total 5	O 4	P 1	0	0

- Molecule 3 is Ceftriaxone (three-letter code: 9F2) (formula: $C_{18}H_{18}N_8O_7S_3$).



Mol	Chain	Residues	Atoms					ZeroOcc	AltConf
			Total	C	N	O	S		
3	A	1	Total	C	N	O	S	0	0
			36	18	8	7	3		
3	B	1	Total	C	N	O	S	0	1
			36	18	8	7	3		
3	C	1	Total	C	N	O	S	0	0
			36	18	8	7	3		
3	D	1	Total	C	N	O	S	0	1
			36	18	8	7	3		

- Molecule 4 is (2R)-2-[(1S)-1-[(2Z)-2-(2-amino-1,3-thiazol-4-yl)-2-(methoxyimino)acetyl]amino]-2-hydroxyethyl]-5-methylidene-5,6-dihydro-2H-1,3-thiazine-4-carboxylic acid (three-letter code: FZS) (formula: $C_{14}H_{17}N_5O_5S_2$).



Mol	Chain	Residues	Atoms					ZeroOcc	AltConf
4	B	1	Total	C	N	O	S	0	1
			26	14	5	5	2		
4	D	1	Total	C	N	O	S	0	1
			26	14	5	5	2		

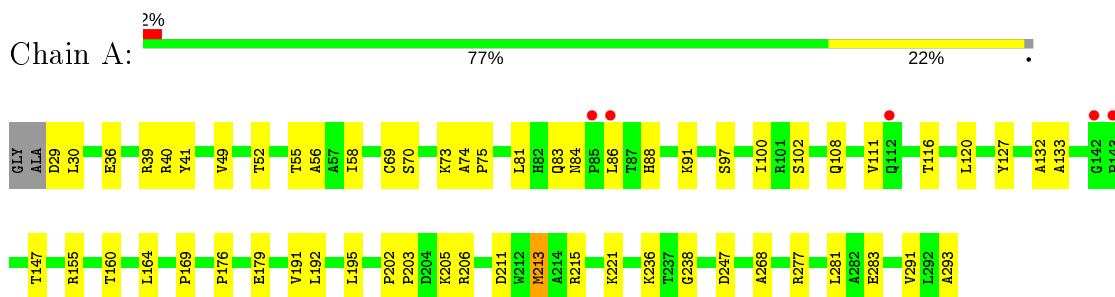
- Molecule 5 is water.

Mol	Chain	Residues	Atoms		ZeroOcc	AltConf
5	A	135	Total	O	0	0
			135	135		
5	B	73	Total	O	0	0
			73	73		
5	C	132	Total	O	0	0
			132	132		
5	D	80	Total	O	0	0
			80	80		

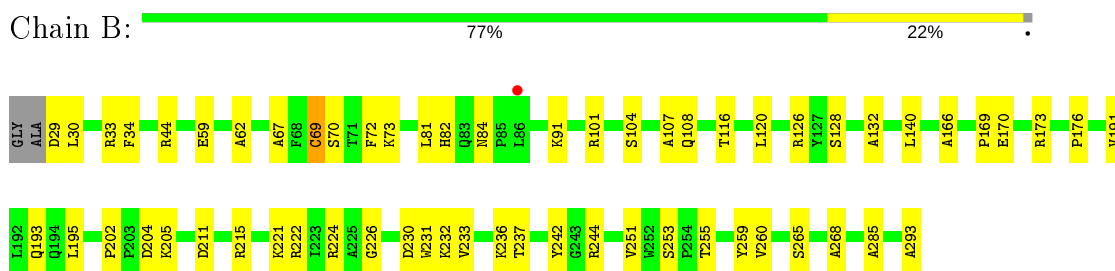
3 Residue-property plots [i](#)

These plots are drawn for all protein, RNA and DNA chains in the entry. The first graphic for a chain summarises the proportions of the various outlier classes displayed in the second graphic. The second graphic shows the sequence view annotated by issues in geometry and electron density. Residues are color-coded according to the number of geometric quality criteria for which they contain at least one outlier: green = 0, yellow = 1, orange = 2 and red = 3 or more. A red dot above a residue indicates a poor fit to the electron density ($RSRZ > 2$). Stretches of 2 or more consecutive residues without any outlier are shown as a green connector. Residues present in the sample, but not in the model, are shown in grey.

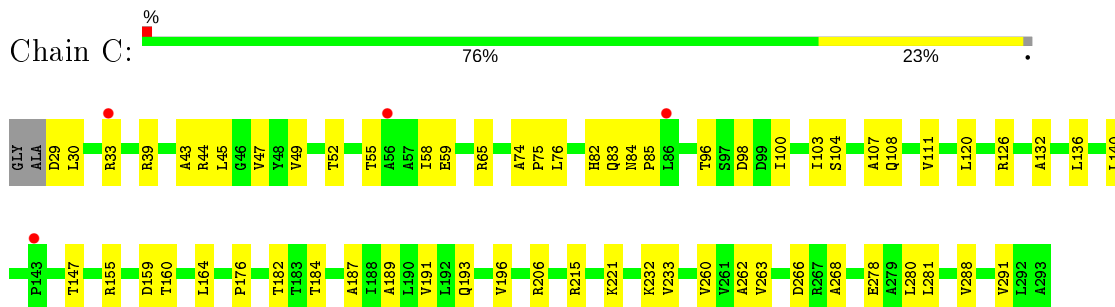
- Molecule 1: Beta-lactamase



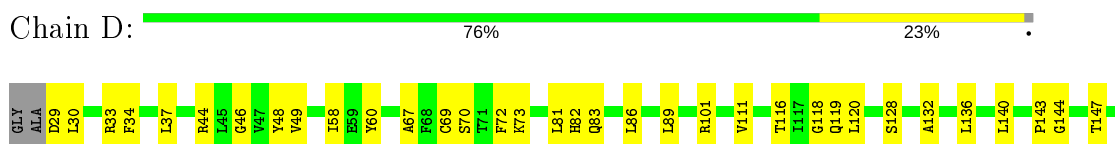
- Molecule 1: Beta-lactamase

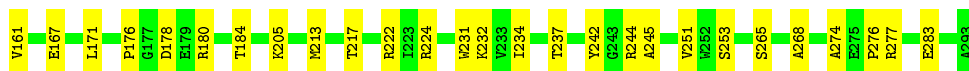


- Molecule 1: Beta-lactamase



- Molecule 1: Beta-lactamase





4 Data and refinement statistics

Property	Value	Source
Space group	P 1 21 1	Depositor
Cell constants a, b, c, α , β , γ	77.85Å 95.31Å 111.87Å 90.00° 109.82° 90.00°	Depositor
Resolution (Å)	43.41 – 2.30 43.41 – 2.30	Depositor EDS
% Data completeness (in resolution range)	94.9 (43.41-2.30) 92.4 (43.41-2.30)	Depositor EDS
R_{merge}	(Not available)	Depositor
R_{sym}	(Not available)	Depositor
$\langle I/\sigma(I) \rangle$ ¹	1.28 (at 2.29Å)	Xtrriage
Refinement program	PHENIX (1.12_2829: ???)	Depositor
R, R_{free}	0.241 , 0.267 0.241 , 0.267	Depositor DCC
R_{free} test set	3367 reflections (4.93%)	wwPDB-VP
Wilson B-factor (Å ²)	30.3	Xtrriage
Anisotropy	0.038	Xtrriage
Bulk solvent k_{sol} (e/Å ³), B_{sol} (Å ²)	0.33 , 20.7	EDS
L-test for twinning ²	$\langle L \rangle = 0.41$, $\langle L^2 \rangle = 0.23$	Xtrriage
Estimated twinning fraction	0.186 for h,-k,-h-l	Xtrriage
F_o, F_c correlation	0.93	EDS
Total number of atoms	8578	wwPDB-VP
Average B, all atoms (Å ²)	35.0	wwPDB-VP

Xtrriage's analysis on translational NCS is as follows: *The largest off-origin peak in the Patterson function is 15.13% of the height of the origin peak. No significant pseudotranslation is detected.*

¹Intensities estimated from amplitudes.

²Theoretical values of $\langle |L| \rangle$, $\langle L^2 \rangle$ for acentric reflections are 0.5, 0.333 respectively for untwinned datasets, and 0.375, 0.2 for perfectly twinned datasets.

5 Model quality [i](#)

5.1 Standard geometry [i](#)

Bond lengths and bond angles in the following residue types are not validated in this section: FZS, PO4, 9F2

The Z score for a bond length (or angle) is the number of standard deviations the observed value is removed from the expected value. A bond length (or angle) with $|Z| > 5$ is considered an outlier worth inspection. RMSZ is the root-mean-square of all Z scores of the bond lengths (or angles).

Mol	Chain	Bond lengths		Bond angles	
		RMSZ	# Z >5	RMSZ	# Z >5
1	A	0.48	0/2027	0.70	0/2767
1	B	0.46	0/2027	0.63	0/2767
1	C	0.45	0/2027	0.67	0/2767
1	D	0.47	0/2027	0.68	1/2767 (0.0%)
All	All	0.47	0/8108	0.67	1/11068 (0.0%)

There are no bond length outliers.

All (1) bond angle outliers are listed below:

Mol	Chain	Res	Type	Atoms	Z	Observed(°)	Ideal(°)
1	D	274	ALA	C-N-CA	-9.58	97.75	121.70

There are no chirality outliers.

There are no planarity outliers.

5.2 Too-close contacts [i](#)

In the following table, the Non-H and H(model) columns list the number of non-hydrogen atoms and hydrogen atoms in the chain respectively. The H(added) column lists the number of hydrogen atoms added and optimized by MolProbity. The Clashes column lists the number of clashes within the asymmetric unit, whereas Symm-Clashes lists symmetry related clashes.

Mol	Chain	Non-H	H(model)	H(added)	Clashes	Symm-Clashes
1	A	1988	0	1956	46	0
1	B	1988	0	1955	42	0
1	C	1988	0	1956	50	0
1	D	1988	0	1953	46	0
2	A	5	0	0	0	0
2	C	5	0	0	0	0

Continued on next page...

Continued from previous page...

Mol	Chain	Non-H	H(model)	H(added)	Clashes	Symm-Clashes
3	A	36	0	0	2	0
3	B	36	0	0	1	0
3	C	36	0	0	3	0
3	D	36	0	0	1	0
4	B	26	0	0	1	0
4	D	26	0	0	4	0
5	A	135	0	0	17	1
5	B	73	0	0	5	0
5	C	132	0	0	16	0
5	D	80	0	0	16	1
All	All	8578	0	7820	183	1

The all-atom clashscore is defined as the number of clashes found per 1000 atoms (including hydrogen atoms). The all-atom clashscore for this structure is 11.

All (183) close contacts within the same asymmetric unit are listed below, sorted by their clash magnitude.

Atom-1	Atom-2	Interatomic distance (Å)	Clash overlap (Å)
1:B:82:HIS:ND1	5:B:401:HOH:O	1.87	1.07
1:C:39:ARG:NH2	5:C:401:HOH:O	1.87	1.06
1:B:29:ASP:N	5:B:402:HOH:O	1.95	0.96
1:A:179:GLU:OE1	5:A:401:HOH:O	1.85	0.93
1:A:29:ASP:N	5:A:402:HOH:O	2.07	0.86
1:C:82:HIS:NE2	5:C:404:HOH:O	2.09	0.84
1:C:84:ASN:ND2	5:C:405:HOH:O	2.10	0.84
1:D:143:PRO:O	5:D:401:HOH:O	1.95	0.83
1:A:86:LEU:N	5:A:405:HOH:O	2.12	0.82
1:B:33:ARG:NH1	1:C:291:VAL:O	2.17	0.78
1:A:36:GLU:OE1	1:A:40:ARG:NH2	2.17	0.78
1:D:82:HIS:ND1	5:D:405:HOH:O	2.18	0.75
1:B:293:ALA:O	5:B:403:HOH:O	2.04	0.75
1:C:155:ARG:NH2	5:C:402:HOH:O	2.07	0.74
1:A:192:LEU:HD11	1:A:213:MET:HE1	1.70	0.74
1:A:97:SER:N	5:A:407:HOH:O	2.20	0.73
4:D:302[B]:FZS:OAE	5:D:404:HOH:O	2.06	0.73
1:B:70:SER:HB3	1:B:73:LYS:HD2	1.70	0.72
1:D:29:ASP:N	5:D:406:HOH:O	2.22	0.72
1:C:108:GLN:HG2	1:D:101:ARG:HG2	1.72	0.72
1:C:233:VAL:O	5:C:403:HOH:O	2.08	0.71
1:A:29:ASP:N	5:A:410:HOH:O	2.24	0.71
1:C:126:ARG:NH2	3:C:302:9F2:O3	2.24	0.71

Continued on next page...

Continued from previous page...

Atom-1	Atom-2	Interatomic distance (Å)	Clash overlap (Å)
1:C:29:ASP:OD1	5:C:406:HOH:O	2.10	0.69
3:D:301[A]:9F2:O4	5:D:404:HOH:O	2.08	0.69
1:A:84:ASN:OD1	5:A:403:HOH:O	2.09	0.69
1:D:89:LEU:O	1:D:116:THR:HG23	1.92	0.69
3:A:302:9F2:O7	5:A:404:HOH:O	2.10	0.68
1:C:59:GLU:OE2	5:C:407:HOH:O	2.11	0.68
1:C:184:THR:HG21	5:C:451:HOH:O	1.93	0.68
1:A:100:ILE:HD13	1:A:108:GLN:HG3	1.76	0.67
1:A:206:ARG:NH2	5:A:411:HOH:O	2.27	0.67
1:C:288:VAL:HB	5:C:411:HOH:O	1.94	0.67
1:A:81:LEU:HD23	1:A:205:LYS:HB3	1.77	0.66
1:B:253:SER:HG	1:B:255:THR:HG1	1.45	0.65
1:A:202:PRO:HG2	1:A:205:LYS:HD2	1.79	0.65
1:D:242:TYR:HB3	1:D:268:ALA:HA	1.78	0.65
3:C:302:9F2:N7	1:D:217:THR:OG1	2.30	0.64
1:D:81:LEU:HD13	1:D:205:LYS:HB3	1.79	0.64
1:A:52:THR:OG1	1:A:55:THR:HG22	1.97	0.64
4:D:302[B]:FZS:CAW	5:D:404:HOH:O	2.45	0.63
1:C:103:ILE:HD11	1:D:111:VAL:HG11	1.80	0.62
3:A:302:9F2:N2	5:A:414:HOH:O	2.31	0.62
1:B:29:ASP:O	1:B:33:ARG:HG3	2.00	0.61
1:A:176:PRO:HG3	1:A:268:ALA:HB1	1.83	0.60
1:D:277:ARG:NH2	5:D:403:HOH:O	2.05	0.60
1:A:291:VAL:HA	1:D:33:ARG:CZ	2.32	0.59
1:A:36:GLU:HG2	5:A:422:HOH:O	2.02	0.58
1:C:45:LEU:HD13	1:C:280:LEU:CD2	2.33	0.58
1:D:70:SER:HB3	1:D:73:LYS:HD2	1.84	0.58
1:A:293:ALA:C	5:D:411:HOH:O	2.40	0.58
1:A:179:GLU:OE2	5:A:406:HOH:O	2.17	0.58
1:D:67:ALA:HB3	1:D:244:ARG:HD3	1.84	0.58
1:C:82:HIS:CE1	5:C:404:HOH:O	2.52	0.58
1:B:242:TYR:HB3	1:B:268:ALA:HA	1.85	0.57
1:D:224:ARG:HD3	1:D:224:ARG:O	2.05	0.57
1:A:120:LEU:HD22	1:A:132:ALA:HA	1.87	0.56
1:B:176:PRO:HG3	1:B:268:ALA:HB1	1.87	0.56
1:A:83:GLN:NE2	5:A:419:HOH:O	2.37	0.56
1:C:49:VAL:HB	1:C:58:ILE:HB	1.87	0.55
1:B:224:ARG:NH2	1:B:231:TRP:O	2.31	0.55
1:B:59:GLU:HB3	1:B:62:ALA:HB2	1.87	0.55
1:C:44:ARG:NH1	1:C:266:ASP:OD2	2.36	0.55
1:A:102:SER:HB2	1:A:169:PRO:HB3	1.88	0.55

Continued on next page...

Continued from previous page...

Atom-1	Atom-2	Interatomic distance (Å)	Clash overlap (Å)
1:A:83:GLN:NE2	5:A:418:HOH:O	2.36	0.55
1:C:96:THR:HG23	1:C:98:ASP:H	1.72	0.55
1:A:30:LEU:HD22	1:A:291:VAL:HG21	1.86	0.55
1:D:283:GLU:HB3	5:D:411:HOH:O	2.07	0.54
1:D:213:MET:HE2	1:D:234:ILE:HG13	1.89	0.54
1:B:224:ARG:HD3	1:B:224:ARG:O	2.07	0.54
1:D:29:ASP:N	5:D:412:HOH:O	2.39	0.54
1:A:147:THR:HB	1:A:164:LEU:O	2.08	0.54
1:A:49:VAL:HB	1:A:58:ILE:HB	1.88	0.54
1:B:259:TYR:OH	5:B:404:HOH:O	2.18	0.54
1:D:60:TYR:HB3	5:D:402:HOH:O	2.07	0.54
1:D:277:ARG:NH2	5:D:413:HOH:O	2.40	0.53
1:A:70:SER:HB2	1:A:238:GLY:HA2	1.88	0.53
1:C:85:PRO:HB3	5:C:497:HOH:O	2.08	0.52
1:D:222:ARG:HD2	1:D:237:THR:HG22	1.92	0.52
1:A:127:TYR:O	1:B:108:GLN:NE2	2.41	0.52
1:A:88:HIS:HB3	5:A:405:HOH:O	2.09	0.52
1:B:70:SER:N	4:B:302 B]:FZS:O1	2.38	0.51
1:B:126:ARG:NH1	5:B:413:HOH:O	2.43	0.51
1:B:73:LYS:HB2	1:B:236:LYS:HE3	1.93	0.51
1:B:120:LEU:HD22	1:B:132:ALA:HA	1.92	0.51
1:D:161:VAL:HG11	1:D:184:THR:HG23	1.92	0.51
1:C:29:ASP:OD2	5:C:410:HOH:O	2.19	0.51
1:D:83:GLN:HG3	5:D:405:HOH:O	2.11	0.51
1:C:120:LEU:HD22	1:C:132:ALA:HA	1.93	0.50
1:D:44:ARG:O	1:D:265:SER:HA	2.11	0.50
1:C:47:VAL:HA	1:C:262:ALA:O	2.12	0.50
1:C:100:ILE:HD11	1:C:111:VAL:HG22	1.94	0.50
1:C:126:ARG:HH22	3:C:302:9F2:C18	2.23	0.50
1:A:70:SER:OG	1:A:73:LYS:NZ	2.29	0.50
1:D:120:LEU:HD22	1:D:132:ALA:HA	1.94	0.49
1:C:176:PRO:HG3	1:C:268:ALA:HB1	1.95	0.49
1:D:167:GLU:C	1:D:171:LEU:HD23	2.33	0.49
1:C:147:THR:HB	1:C:164:LEU:O	2.11	0.49
1:C:45:LEU:HD13	1:C:280:LEU:HD22	1.93	0.49
1:B:191:VAL:O	1:B:195:LEU:HG	2.13	0.49
1:C:221:LYS:HE3	1:C:278:GLU:OE2	2.13	0.49
1:D:224:ARG:NH2	1:D:231:TRP:O	2.26	0.49
1:A:111:VAL:CG1	5:A:407:HOH:O	2.62	0.48
1:A:211:ASP:OD2	1:A:215:ARG:NH1	2.37	0.48
1:B:30:LEU:HG	1:B:34:PHE:CE2	2.47	0.48

Continued on next page...

Continued from previous page...

Atom-1	Atom-2	Interatomic distance (Å)	Clash overlap (Å)
4:D:302[B]:FZS:C	5:D:414:HOH:O	2.62	0.48
1:A:73:LYS:HG2	1:A:133:ALA:HB2	1.94	0.48
1:D:232:LYS:O	1:D:251:VAL:HA	2.14	0.48
1:B:226:GLY:HA3	1:B:285:ALA:HB3	1.95	0.48
1:C:215:ARG:HD2	5:C:408:HOH:O	2.13	0.47
1:B:81:LEU:O	1:B:205:LYS:HD3	2.15	0.47
1:D:46:GLY:HA2	5:D:402:HOH:O	2.15	0.47
1:C:193:GLN:NE2	5:C:412:HOH:O	2.26	0.47
1:C:187:ALA:O	1:C:191:VAL:HG23	2.15	0.47
1:D:116:THR:HG21	5:D:442:HOH:O	2.15	0.47
1:C:232:LYS:NZ	5:C:421:HOH:O	2.48	0.47
1:C:43:ALA:HB3	1:C:280:LEU:HD11	1.97	0.47
1:B:91:LYS:O	1:B:116:THR:HA	2.16	0.46
1:C:74:ALA:HB3	1:C:75:PRO:HD3	1.97	0.46
1:C:189:ALA:HB2	1:C:262:ALA:HB2	1.97	0.46
1:A:108:GLN:OE1	1:B:101:ARG:HD2	2.15	0.46
1:C:52:THR:OG1	1:C:55:THR:HG22	2.16	0.46
1:D:178:ASP:OD2	1:D:180:ARG:NH2	2.49	0.46
1:B:104:SER:HB3	1:B:107:ALA:HB3	1.98	0.46
1:D:245:ALA:HB2	1:D:276:PRO:HB3	1.98	0.46
1:D:176:PRO:HG3	1:D:268:ALA:HB1	1.99	0.45
1:D:136:LEU:O	1:D:140:LEU:HD13	2.17	0.45
1:B:169:PRO:HB2	3:B:301[A]:9F2:C14	2.46	0.45
1:B:230:ASP:OD1	1:B:230:ASP:N	2.50	0.45
1:D:86:LEU:HD23	1:D:86:LEU:HA	1.82	0.45
1:D:48:TYR:HA	1:D:58:ILE:O	2.16	0.45
1:B:170:GLU:O	1:B:173:ARG:HG2	2.17	0.44
1:C:193:GLN:HB2	1:C:260:VAL:HG21	1.99	0.44
1:C:155:ARG:HD3	1:C:160:THR:HA	2.00	0.44
1:C:263:VAL:HG12	1:C:281:LEU:HG	1.99	0.44
1:D:176:PRO:HB3	1:D:268:ALA:HB1	1.98	0.44
1:D:69:CYS:O	1:D:72:PHE:HD1	2.01	0.44
1:A:39:ARG:HA	5:A:439:HOH:O	2.18	0.44
1:A:40:ARG:NH1	1:A:283:GLU:OE1	2.50	0.44
1:A:203:PRO:HG3	1:A:206:ARG:HH22	1.83	0.43
1:C:155:ARG:CD	1:C:160:THR:HA	2.48	0.43
1:C:33:ARG:NE	5:C:422:HOH:O	2.51	0.43
1:B:202:PRO:HG2	1:B:205:LYS:HD2	2.01	0.43
1:C:196:VAL:O	1:C:206:ARG:HD2	2.18	0.43
1:B:69:CYS:O	1:B:72:PHE:HD1	2.02	0.43
1:B:84:ASN:O	1:B:205:LYS:NZ	2.51	0.43

Continued on next page...

Continued from previous page...

Atom-1	Atom-2	Interatomic distance (Å)	Clash overlap (Å)
1:A:41:TYR:CD2	1:A:277:ARG:HD2	2.54	0.43
1:C:65:ARG:NH1	1:C:182:THR:OG1	2.49	0.43
1:B:67:ALA:HB3	1:B:244:ARG:HD3	2.01	0.42
1:C:30:LEU:HD22	1:C:291:VAL:HG11	2.01	0.42
1:D:70:SER:N	4:D:302[B]:FZS:O1	2.53	0.42
1:C:155:ARG:HD3	1:C:159:ASP:O	2.20	0.42
1:C:76:LEU:HD21	1:C:136:LEU:HB2	2.00	0.42
1:B:104:SER:O	1:B:108:GLN:HB2	2.20	0.42
1:D:144:GLY:HA3	1:D:147:THR:HG22	2.02	0.42
1:A:291:VAL:HA	1:D:33:ARG:NH2	2.35	0.42
1:B:193:GLN:HB2	1:B:260:VAL:HG21	2.02	0.42
1:C:43:ALA:CB	1:C:280:LEU:HD11	2.50	0.42
1:A:56:ALA:O	5:A:408:HOH:O	2.21	0.41
1:B:211:ASP:OD2	1:B:215:ARG:NE	2.50	0.41
1:A:73:LYS:HB2	1:A:236:LYS:HE3	2.03	0.41
1:C:104:SER:HB3	1:C:107:ALA:HB3	2.02	0.41
1:D:49:VAL:HB	1:D:58:ILE:HB	2.01	0.41
1:D:37:LEU:HD23	1:D:37:LEU:HA	1.81	0.41
1:A:155:ARG:CD	1:A:160:THR:HA	2.51	0.41
1:A:247:ASP:HB2	1:A:281:LEU:HD23	2.02	0.41
1:B:44:ARG:O	1:B:265:SER:HA	2.21	0.41
1:D:116:THR:HG22	1:D:118:GLY:N	2.35	0.41
1:B:140:LEU:HD23	1:B:140:LEU:HA	1.77	0.41
1:B:166:ALA:HB1	1:B:170:GLU:HB2	2.03	0.41
1:B:222:ARG:HD2	1:B:237:THR:HG22	2.03	0.41
1:D:231:TRP:CE3	1:D:253:SER:HA	2.56	0.41
1:A:91:LYS:O	1:A:116:THR:HA	2.21	0.41
1:C:83:GLN:OE1	1:C:140:LEU:HD22	2.20	0.41
1:A:155:ARG:HD3	1:A:160:THR:HA	2.02	0.41
1:D:30:LEU:HG	1:D:34:PHE:CE2	2.56	0.41
1:A:74:ALA:HB3	1:A:75:PRO:HD3	2.03	0.40
1:D:116:THR:HG22	1:D:119:GLN:H	1.85	0.40
1:A:191:VAL:O	1:A:195:LEU:HG	2.21	0.40
1:B:81:LEU:HD13	1:B:205:LYS:HB3	2.03	0.40
1:C:44:ARG:HD2	1:C:44:ARG:HH21	1.76	0.40
1:B:232:LYS:O	1:B:251:VAL:HA	2.22	0.40
1:B:233:VAL:HG22	1:B:251:VAL:HG12	2.04	0.40

All (1) symmetry-related close contacts are listed below. The label for Atom-2 includes the symmetry operator and encoded unit-cell translations to be applied.

Atom-1	Atom-2	Interatomic distance (Å)	Clash overlap (Å)
5:A:508:HOH:O	5:D:480:HOH:O[2_655]	1.91	0.29

5.3 Torsion angles [i](#)

5.3.1 Protein backbone [i](#)

In the following table, the Percentiles column shows the percent Ramachandran outliers of the chain as a percentile score with respect to all X-ray entries followed by that with respect to entries of similar resolution.

The Analysed column shows the number of residues for which the backbone conformation was analysed, and the total number of residues.

Mol	Chain	Analysed	Favoured	Allowed	Outliers	Percentiles	
1	A	263/267 (98%)	256 (97%)	6 (2%)	1 (0%)	34	42
1	B	263/267 (98%)	256 (97%)	6 (2%)	1 (0%)	34	42
1	C	263/267 (98%)	257 (98%)	6 (2%)	0	100	100
1	D	263/267 (98%)	256 (97%)	7 (3%)	0	100	100
All	All	1052/1068 (98%)	1025 (97%)	25 (2%)	2 (0%)	47	58

All (2) Ramachandran outliers are listed below:

Mol	Chain	Res	Type
1	B	69	CYS
1	A	69	CYS

5.3.2 Protein sidechains [i](#)

In the following table, the Percentiles column shows the percent sidechain outliers of the chain as a percentile score with respect to all X-ray entries followed by that with respect to entries of similar resolution.

The Analysed column shows the number of residues for which the sidechain conformation was analysed, and the total number of residues.

Mol	Chain	Analysed	Rotameric	Outliers	Percentiles	
1	A	202/202 (100%)	200 (99%)	2 (1%)	76	87
1	B	202/202 (100%)	199 (98%)	3 (2%)	65	79
1	C	202/202 (100%)	202 (100%)	0	100	100

Continued on next page...

Continued from previous page...

Mol	Chain	Analysed	Rotameric	Outliers	Percentiles	
1	D	202/202 (100%)	201 (100%)	1 (0%)	88	95
All	All	808/808 (100%)	802 (99%)	6 (1%)	84	92

All (6) residues with a non-rotameric sidechain are listed below:

Mol	Chain	Res	Type
1	A	213	MET
1	A	221	LYS
1	B	128	SER
1	B	204	ASP
1	B	221	LYS
1	D	128	SER

Some sidechains can be flipped to improve hydrogen bonding and reduce clashes. All (1) such sidechains are listed below:

Mol	Chain	Res	Type
1	D	82	HIS

5.3.3 RNA [i](#)

There are no RNA molecules in this entry.

5.4 Non-standard residues in protein, DNA, RNA chains [i](#)

There are no non-standard protein/DNA/RNA residues in this entry.

5.5 Carbohydrates [i](#)

There are no carbohydrates in this entry.

5.6 Ligand geometry [i](#)

8 ligands are modelled in this entry.

In the following table, the Counts columns list the number of bonds (or angles) for which Mogul statistics could be retrieved, the number of bonds (or angles) that are observed in the model and the number of bonds (or angles) that are defined in the Chemical Component Dictionary. The Link column lists molecule types, if any, to which the group is linked. The Z score for a bond

length (or angle) is the number of standard deviations the observed value is removed from the expected value. A bond length (or angle) with $|Z| > 2$ is considered an outlier worth inspection. RMSZ is the root-mean-square of all Z scores of the bond lengths (or angles).

Mol	Type	Chain	Res	Link	Bond lengths			Bond angles		
					Counts	RMSZ	# Z > 2	Counts	RMSZ	# Z > 2
3	9F2	D	301[A]	-	31,39,39	1.82	5 (16%)	29,57,57	4.08	13 (44%)
2	PO4	A	301	-	4,4,4	1.09	0	6,6,6	0.56	0
4	FZS	B	302[B]	-	19,27,27	2.24	7 (36%)	13,37,37	4.46	8 (61%)
4	FZS	D	302[B]	-	19,27,27	2.51	7 (36%)	13,37,37	4.65	9 (69%)
3	9F2	C	302	-	31,39,39	1.68	7 (22%)	29,57,57	4.84	12 (41%)
3	9F2	A	302	-	31,39,39	1.71	6 (19%)	29,57,57	3.83	13 (44%)
3	9F2	B	301[A]	-	31,39,39	1.77	4 (12%)	29,57,57	4.03	13 (44%)
2	PO4	C	301	-	4,4,4	0.84	0	6,6,6	0.56	0

In the following table, the Chirals column lists the number of chiral outliers, the number of chiral centers analysed, the number of these observed in the model and the number defined in the Chemical Component Dictionary. Similar counts are reported in the Torsion and Rings columns. '-' means no outliers of that kind were identified.

Mol	Type	Chain	Res	Link	Chirals	Torsions	Rings
3	9F2	D	301[A]	-	-	9/15/53/53	0/4/4/4
4	FZS	B	302[B]	-	-	7/13/38/38	0/1/2/2
4	FZS	D	302[B]	-	-	6/13/38/38	0/1/2/2
3	9F2	C	302	-	-	4/15/53/53	0/4/4/4
3	9F2	A	302	-	-	3/15/53/53	0/4/4/4
3	9F2	B	301[A]	-	-	7/15/53/53	0/4/4/4

All (36) bond length outliers are listed below:

Mol	Chain	Res	Type	Atoms	Z	Observed(Å)	Ideal(Å)
4	D	302[B]	FZS	OAR-NAM	-6.59	1.25	1.40
4	B	302[B]	FZS	OAR-NAM	-6.49	1.25	1.40
3	B	301[A]	9F2	O5-N6	-6.39	1.25	1.40
3	D	301[A]	9F2	O5-N6	-6.33	1.26	1.40
3	A	302	9F2	O5-N6	-6.05	1.26	1.40
3	C	302	9F2	O5-N6	-5.60	1.27	1.40
4	D	302[B]	FZS	CBC-CAZ	4.80	1.55	1.48
4	B	302[B]	FZS	O1-C	-4.04	1.25	1.42
3	D	301[A]	9F2	C18-C9	-4.04	1.46	1.52
4	D	302[B]	FZS	O1-C	-4.03	1.25	1.42
3	B	301[A]	9F2	C18-C9	-3.64	1.46	1.52

Continued on next page...

Continued from previous page...

Mol	Chain	Res	Type	Atoms	Z	Observed(Å)	Ideal(Å)
3	A	302	9F2	C18-C9	-3.60	1.46	1.52
3	C	302	9F2	C11-C10	-3.17	1.46	1.54
3	C	302	9F2	C18-C9	-2.93	1.47	1.52
4	D	302[B]	FZS	CAL-SAT	-2.87	1.75	1.82
4	B	302[B]	FZS	CAL-SAT	-2.79	1.75	1.82
4	D	302[B]	FZS	CAZ-CAW	2.76	1.56	1.50
3	C	302	9F2	C1-S1	-2.62	1.74	1.80
4	B	302[B]	FZS	CBC-CAZ	2.51	1.51	1.48
3	D	301[A]	9F2	C11-C10	-2.41	1.48	1.54
3	C	302	9F2	C2-S1	-2.39	1.76	1.82
3	B	301[A]	9F2	C2-S1	-2.36	1.76	1.82
4	D	302[B]	FZS	CAJ-SAU	2.34	1.74	1.70
3	D	301[A]	9F2	C2-S1	-2.30	1.77	1.82
3	B	301[A]	9F2	C11-C10	-2.26	1.48	1.54
3	A	302	9F2	C11-C10	-2.24	1.48	1.54
3	A	302	9F2	C2-S1	-2.20	1.77	1.82
4	D	302[B]	FZS	CAV-CBA	2.20	1.55	1.52
3	A	302	9F2	C5-S2	-2.18	1.69	1.75
3	A	302	9F2	C1-S1	-2.16	1.75	1.80
4	B	302[B]	FZS	CAV-CBA	2.14	1.55	1.52
3	D	301[A]	9F2	C16-S3	2.07	1.73	1.70
3	C	302	9F2	C16-S3	2.06	1.73	1.70
3	C	302	9F2	C13-C12	-2.05	1.46	1.50
4	B	302[B]	FZS	C-CA	2.04	1.56	1.52
4	B	302[B]	FZS	CAJ-SAU	2.04	1.73	1.70

All (68) bond angle outliers are listed below:

Mol	Chain	Res	Type	Atoms	Z	Observed(°)	Ideal(°)
3	C	302	9F2	O5-N6-C13	17.10	130.10	111.28
3	D	301[A]	9F2	C4-S2-C5	12.72	118.17	101.86
3	A	302	9F2	O5-N6-C13	12.16	124.66	111.28
3	B	301[A]	9F2	C4-S2-C5	11.97	117.21	101.86
3	C	302	9F2	C14-O5-N6	11.83	122.15	108.40
3	D	301[A]	9F2	O5-N6-C13	11.66	124.11	111.28
4	D	302[B]	FZS	OAR-NAM-CAZ	11.04	123.43	111.28
3	B	301[A]	9F2	C14-O5-N6	9.47	119.41	108.40
3	A	302	9F2	C14-O5-N6	9.38	119.30	108.40
4	B	302[B]	FZS	CAA-OAR-NAM	9.37	119.29	108.40
3	B	301[A]	9F2	O5-N6-C13	9.34	121.56	111.28
4	B	302[B]	FZS	OAR-NAM-CAZ	8.84	121.01	111.28
3	C	302	9F2	S1-C1-N4	-7.56	95.50	110.48

Continued on next page...

Continued from previous page...

Mol	Chain	Res	Type	Atoms	Z	Observed(°)	Ideal(°)
4	D	302[B]	FZS	CAA-OAR-NAM	7.56	117.19	108.40
3	D	301[A]	9F2	C14-O5-N6	7.05	116.59	108.40
3	C	302	9F2	C2-S1-C1	6.34	106.90	94.47
4	B	302[B]	FZS	CAL-SAT-CB	6.12	106.48	94.47
4	D	302[B]	FZS	CAL-SAT-CB	5.98	106.20	94.47
3	C	302	9F2	C4-S2-C5	5.91	109.44	101.86
3	A	302	9F2	S1-C1-N4	-5.75	99.09	110.48
3	A	302	9F2	C2-S1-C1	5.65	105.55	94.47
3	B	301[A]	9F2	C3-C2-S1	-5.28	105.28	115.08
3	B	301[A]	9F2	C6-N1-C5	4.97	121.48	115.79
3	C	302	9F2	C11-C1-N4	-4.95	80.41	87.09
3	A	302	9F2	C4-S2-C5	4.72	107.92	101.86
3	D	301[A]	9F2	C6-N1-C5	4.65	121.12	115.79
3	C	302	9F2	C6-N1-C5	4.49	120.93	115.79
3	A	302	9F2	C11-C1-N4	-4.46	81.07	87.09
3	D	301[A]	9F2	C11-C1-N4	-4.45	81.09	87.09
3	A	302	9F2	C6-N1-C5	4.38	120.82	115.79
3	B	301[A]	9F2	C11-C1-N4	-4.38	81.18	87.09
4	B	302[B]	FZS	CAZ-CAW-N	4.34	121.59	114.38
4	D	302[B]	FZS	CAZ-CAW-N	4.07	121.14	114.38
4	D	302[B]	FZS	OAE-CAW-CAZ	-3.74	116.05	120.35
3	B	301[A]	9F2	S1-C1-N4	-3.69	103.18	110.48
3	A	302	9F2	C1-C11-C10	3.62	91.29	85.21
3	C	302	9F2	C1-C11-C10	3.46	91.03	85.21
3	D	301[A]	9F2	S1-C1-N4	-3.45	103.64	110.48
3	D	301[A]	9F2	C1-C11-C10	3.40	90.92	85.21
3	C	302	9F2	C15-C16-S3	-3.39	107.62	111.79
3	D	301[A]	9F2	O3-C10-N4	3.35	139.77	131.76
3	B	301[A]	9F2	C11-N5-C12	3.32	128.51	121.56
3	A	302	9F2	C15-C16-S3	-3.26	107.79	111.79
4	D	302[B]	FZS	C-CA-N	3.21	114.38	109.27
3	D	301[A]	9F2	C3-C2-S1	-3.19	109.15	115.08
3	B	301[A]	9F2	C1-C11-C10	2.99	90.23	85.21
3	D	301[A]	9F2	C15-C16-S3	-2.99	108.12	111.79
3	C	302	9F2	C1-N4-C10	2.95	100.69	94.86
3	A	302	9F2	O3-C10-N4	2.94	138.79	131.76
3	D	301[A]	9F2	C11-N5-C12	2.94	127.70	121.56
3	B	301[A]	9F2	C15-C16-S3	-2.92	108.20	111.79
4	D	302[B]	FZS	CBC-CAJ-SAU	-2.92	108.20	111.79
3	A	302	9F2	C1-N4-C10	2.85	100.49	94.86
3	B	301[A]	9F2	C2-S1-C1	2.84	100.04	94.47
4	B	302[B]	FZS	CBC-CAJ-SAU	-2.84	108.31	111.79

Continued on next page...

Continued from previous page...

Mol	Chain	Res	Type	Atoms	Z	Observed(°)	Ideal(°)
3	C	302	9F2	C11-N5-C12	2.78	127.39	121.56
4	B	302[B]	FZS	OAE-CAW-CAZ	-2.75	117.19	120.35
3	C	302	9F2	O3-C10-N4	2.63	138.05	131.76
3	B	301[A]	9F2	O3-C10-N4	2.61	138.00	131.76
4	D	302[B]	FZS	C-CA-CB	-2.60	106.49	112.73
4	B	302[B]	FZS	C-CA-N	2.50	113.24	109.27
4	B	302[B]	FZS	C-CA-CB	-2.41	106.94	112.73
4	D	302[B]	FZS	CAX-CAL-SAT	-2.40	106.71	111.65
3	D	301[A]	9F2	C2-S1-C1	2.26	98.90	94.47
3	A	302	9F2	C11-N5-C12	2.25	126.27	121.56
3	D	301[A]	9F2	C1-N4-C10	2.24	99.29	94.86
3	B	301[A]	9F2	C1-N4-C10	2.13	99.07	94.86
3	A	302	9F2	C11-C10-N4	-2.00	87.14	91.63

There are no chirality outliers.

All (36) torsion outliers are listed below:

Mol	Chain	Res	Type	Atoms
3	D	301[A]	9F2	C3-C4-S2-C5
3	D	301[A]	9F2	N1-C5-S2-C4
3	D	301[A]	9F2	N3-C5-S2-C4
3	D	301[A]	9F2	C1-C11-N5-C12
3	D	301[A]	9F2	N5-C12-C13-C15
4	B	302[B]	FZS	CB-CA-N-CAW
4	B	302[B]	FZS	CAZ-CAW-N-CA
4	B	302[B]	FZS	OAE-CAW-N-CA
4	B	302[B]	FZS	O1-C-CA-CB
4	D	302[B]	FZS	CB-CA-N-CAW
4	D	302[B]	FZS	CAZ-CAW-N-CA
4	D	302[B]	FZS	OAE-CAW-N-CA
3	A	302	9F2	C13-N6-O5-C14
3	B	301[A]	9F2	C3-C4-S2-C5
3	B	301[A]	9F2	N1-C5-S2-C4
3	B	301[A]	9F2	N3-C5-S2-C4
3	B	301[A]	9F2	N5-C12-C13-N6
3	B	301[A]	9F2	O4-C12-C13-N6
3	B	301[A]	9F2	O4-C12-C13-C15
3	D	301[A]	9F2	C13-N6-O5-C14
4	B	302[B]	FZS	O1-C-CA-N
4	D	302[B]	FZS	O1-C-CA-CB
3	C	302	9F2	N1-C5-S2-C4
3	C	302	9F2	O4-C12-N5-C11

Continued on next page...

Continued from previous page...

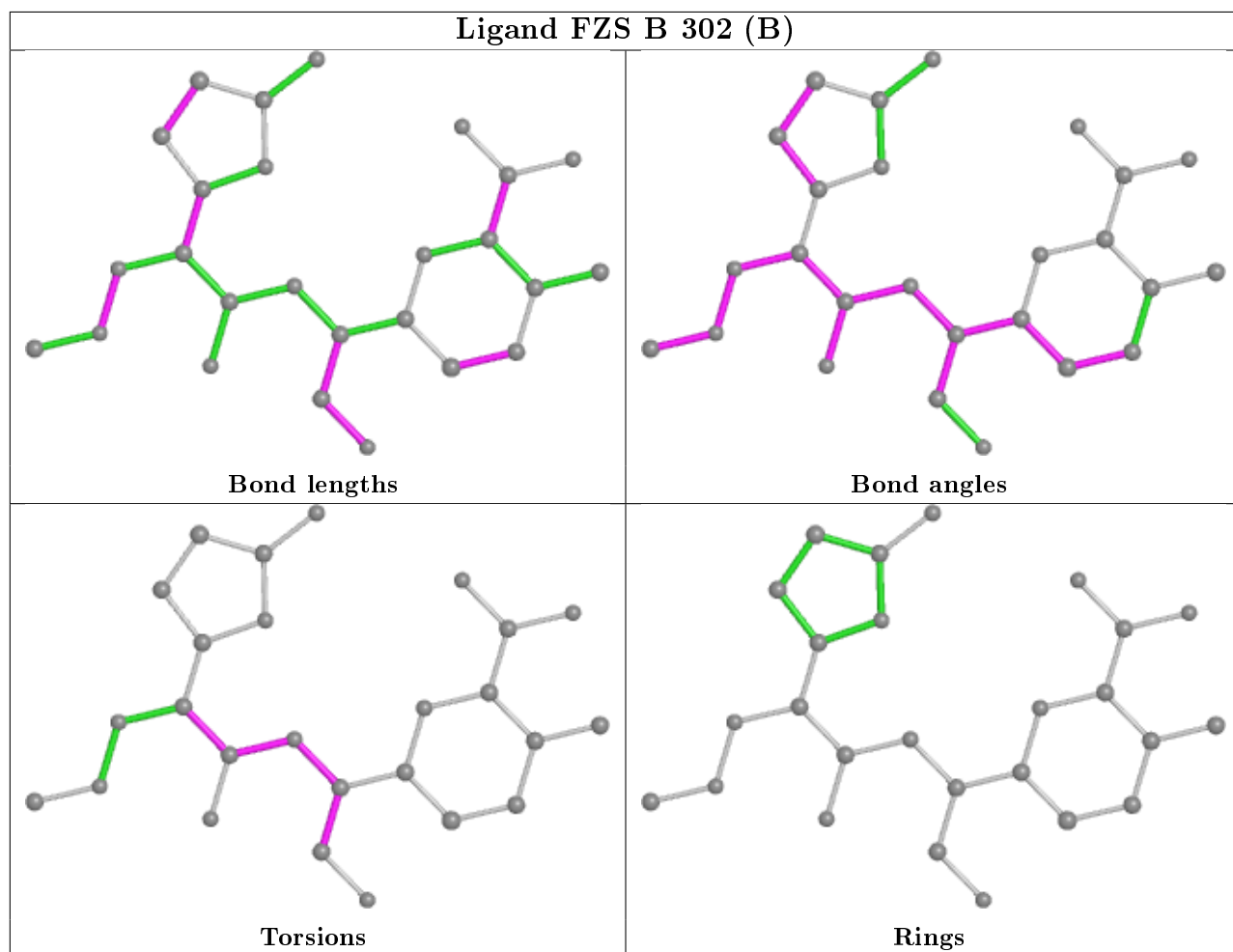
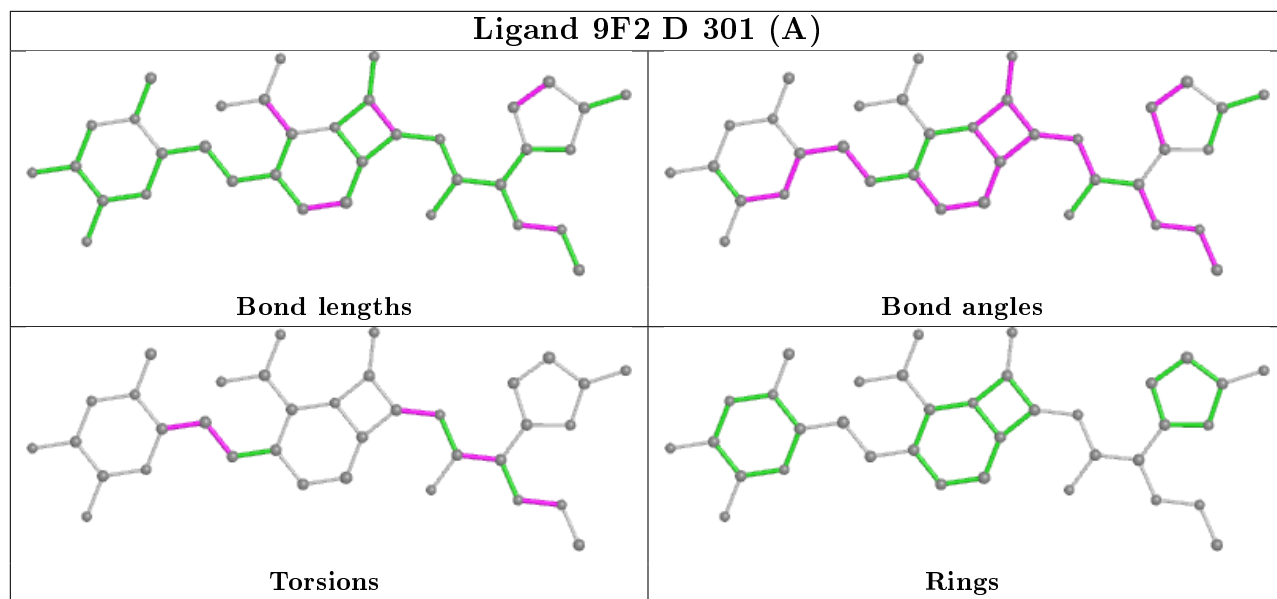
Mol	Chain	Res	Type	Atoms
4	B	302[B]	FZS	C-CA-N-CAW
3	D	301[A]	9F2	O4-C12-C13-C15
3	C	302	9F2	N3-C5-S2-C4
4	D	302[B]	FZS	C-CA-N-CAW
3	A	302	9F2	O4-C12-C13-N6
3	D	301[A]	9F2	O4-C12-C13-N6
4	B	302[B]	FZS	OAE-CAW-CAZ-NAM
4	D	302[B]	FZS	OAE-CAW-CAZ-NAM
3	D	301[A]	9F2	N5-C12-C13-N6
3	A	302	9F2	N5-C12-C13-N6
3	B	301[A]	9F2	N5-C12-C13-C15
3	C	302	9F2	O4-C12-C13-N6

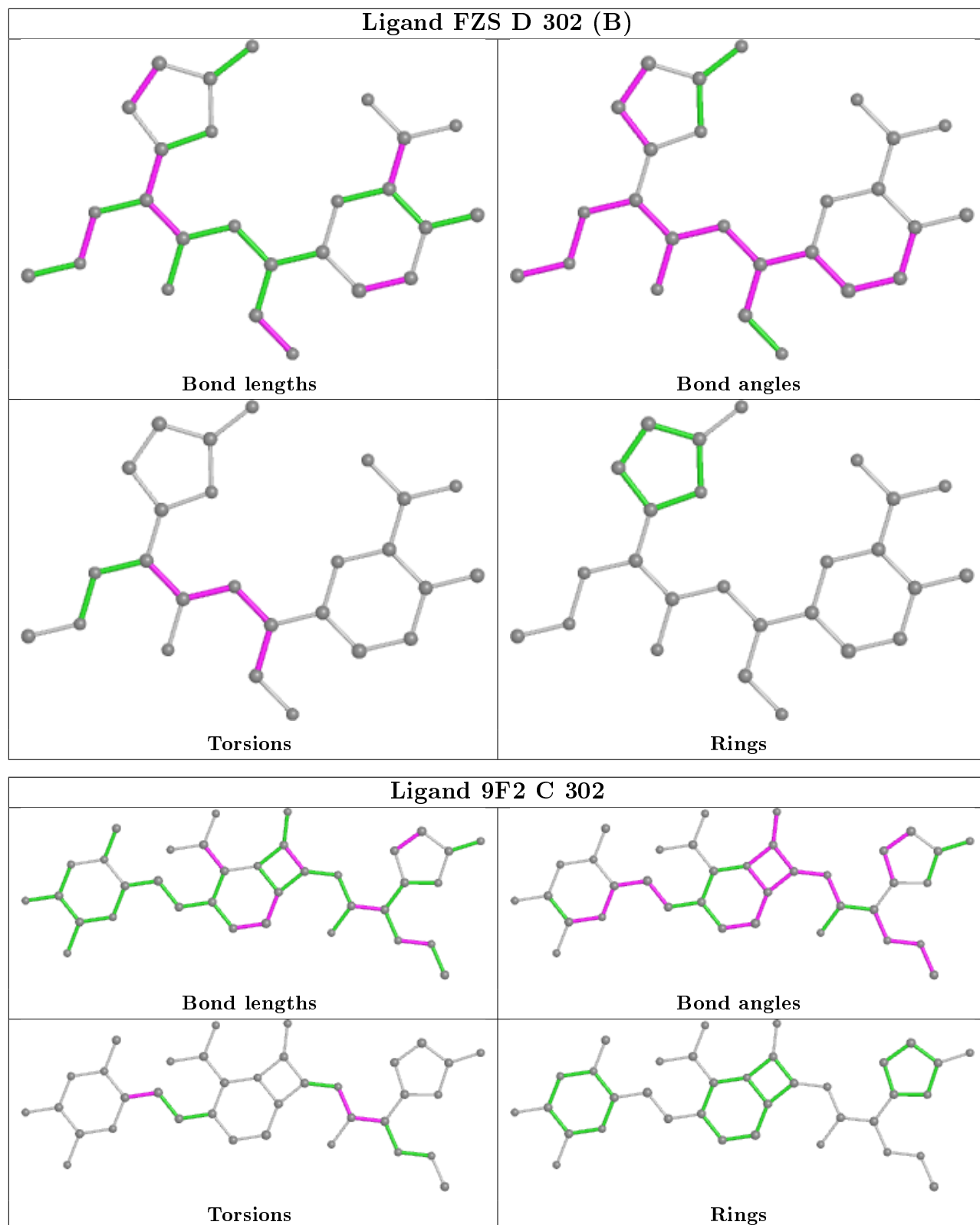
There are no ring outliers.

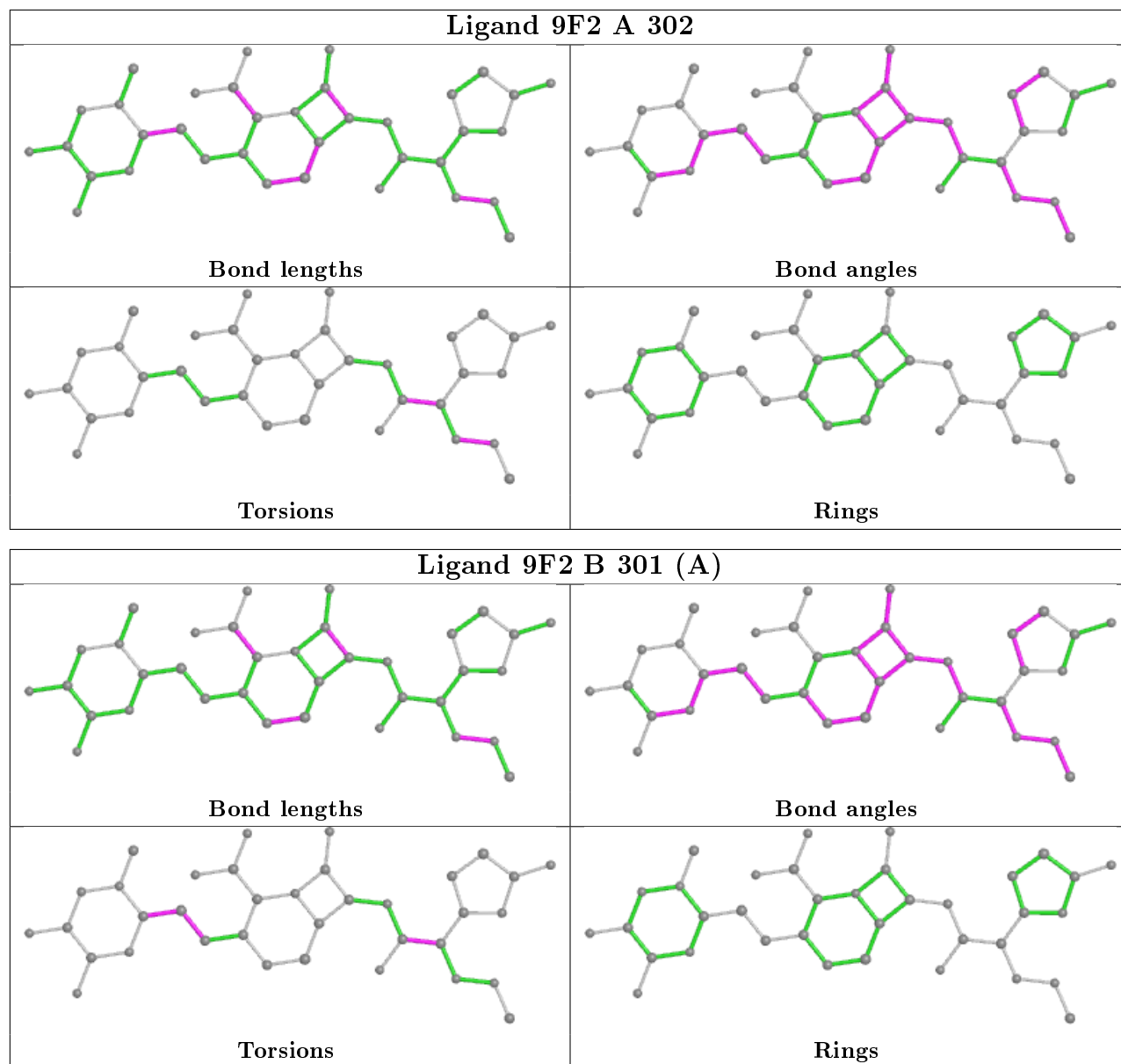
6 monomers are involved in 12 short contacts:

Mol	Chain	Res	Type	Clashes	Symm-Clashes
3	D	301[A]	9F2	1	0
4	B	302[B]	FZS	1	0
4	D	302[B]	FZS	4	0
3	C	302	9F2	3	0
3	A	302	9F2	2	0
3	B	301[A]	9F2	1	0

The following is a two-dimensional graphical depiction of Mogul quality analysis of bond lengths, bond angles, torsion angles, and ring geometry for all instances of the Ligand of Interest. In addition, ligands with molecular weight > 250 and outliers as shown on the validation Tables will also be included. For torsion angles, if less than 5% of the Mogul distribution of torsion angles is within 10 degrees of the torsion angle in question, then that torsion angle is considered an outlier. Any bond that is central to one or more torsion angles identified as an outlier by Mogul will be highlighted in the graph. For rings, the root-mean-square deviation (RMSD) between the ring in question and similar rings identified by Mogul is calculated over all ring torsion angles. If the average RMSD is greater than 60 degrees and the minimal RMSD between the ring in question and any Mogul-identified rings is also greater than 60 degrees, then that ring is considered an outlier. The outliers are highlighted in purple. The color gray indicates Mogul did not find sufficient equivalents in the CSD to analyse the geometry.







5.7 Other polymers [i](#)

There are no such residues in this entry.

5.8 Polymer linkage issues [i](#)

There are no chain breaks in this entry.

6 Fit of model and data [i](#)

6.1 Protein, DNA and RNA chains [i](#)

In the following table, the column labelled '#RSRZ> 2' contains the number (and percentage) of RSRZ outliers, followed by percent RSRZ outliers for the chain as percentile scores relative to all X-ray entries and entries of similar resolution. The OWAB column contains the minimum, median, 95th percentile and maximum values of the occupancy-weighted average B-factor per residue. The column labelled 'Q< 0.9' lists the number of (and percentage) of residues with an average occupancy less than 0.9.

Mol	Chain	Analysed	<RSRZ>	#RSRZ>2	OWAB(Å ²)	Q<0.9
1	A	265/267 (99%)	0.16	5 (1%) 66 73	22, 32, 48, 66	0
1	B	265/267 (99%)	0.01	1 (0%) 92 95	24, 33, 46, 59	0
1	C	265/267 (99%)	0.15	4 (1%) 73 79	25, 35, 50, 59	0
1	D	265/267 (99%)	0.02	0 100 100	21, 32, 45, 58	0
All	All	1060/1068 (99%)	0.09	10 (0%) 84 88	21, 33, 49, 66	0

All (10) RSRZ outliers are listed below:

Mol	Chain	Res	Type	RSRZ
1	A	112	GLN	3.0
1	C	86	LEU	2.9
1	A	86	LEU	2.9
1	B	86	LEU	2.8
1	C	56	ALA	2.5
1	A	143	PRO	2.3
1	A	85	PRO	2.2
1	C	33	ARG	2.1
1	A	142	GLY	2.1
1	C	143	PRO	2.0

6.2 Non-standard residues in protein, DNA, RNA chains [i](#)

There are no non-standard protein/DNA/RNA residues in this entry.

6.3 Carbohydrates [i](#)

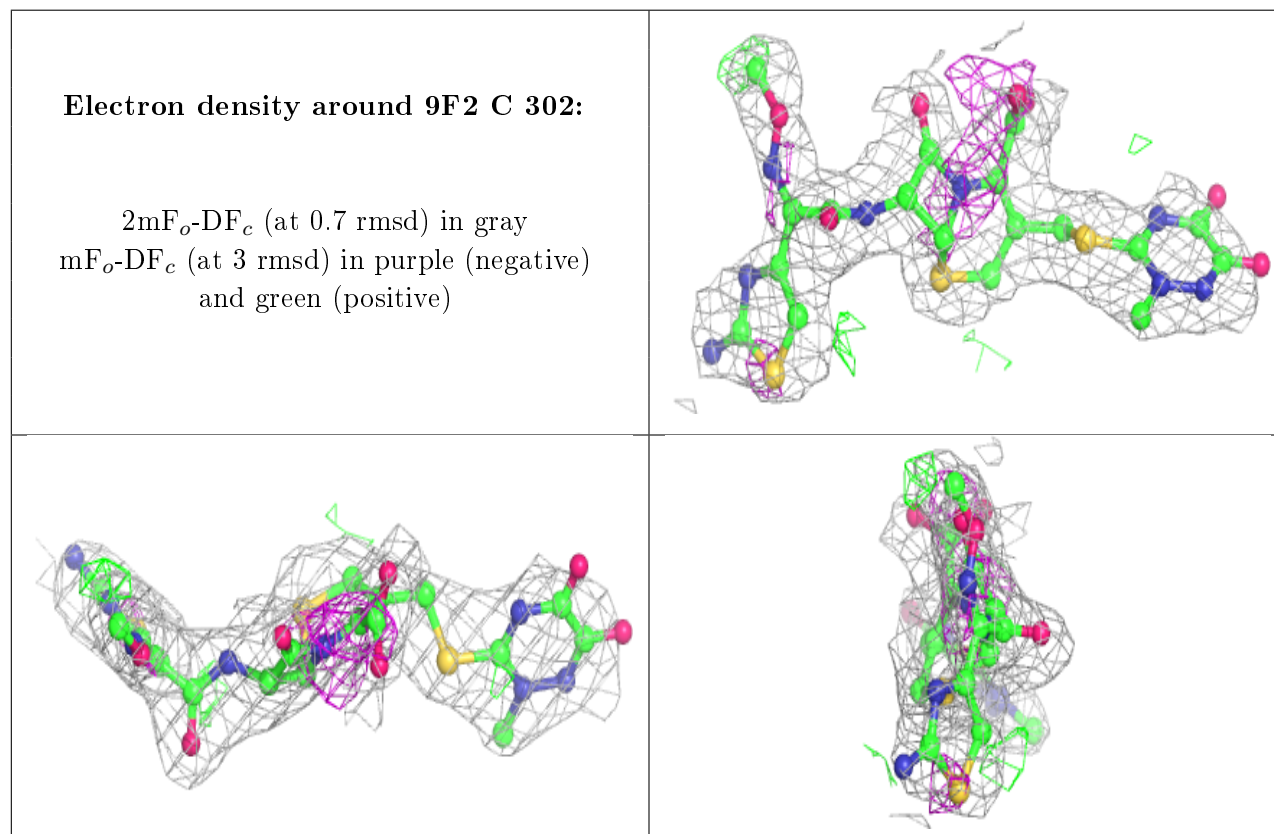
There are no carbohydrates in this entry.

6.4 Ligands [i](#)

In the following table, the Atoms column lists the number of modelled atoms in the group and the number defined in the chemical component dictionary. The B-factors column lists the minimum, median, 95th percentile and maximum values of B factors of atoms in the group. The column labelled 'Q< 0.9' lists the number of atoms with occupancy less than 0.9.

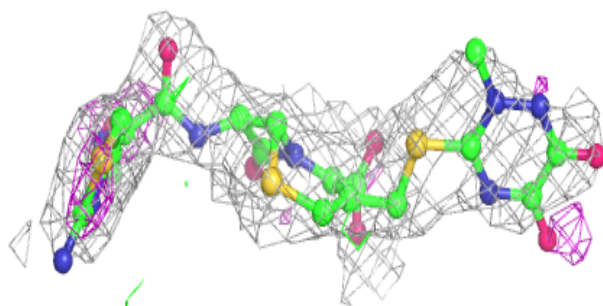
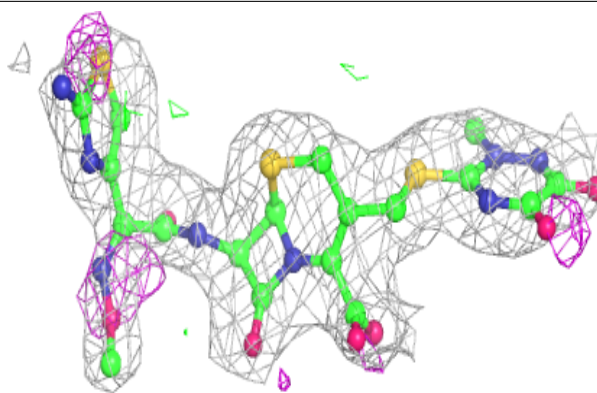
Mol	Type	Chain	Res	Atoms	RSCC	RSR	B-factors(Å ²)	Q<0.9
3	9F2	C	302	36/36	0.82	0.26	45,60,74,79	0
3	9F2	A	302	36/36	0.86	0.23	48,59,73,82	0
3	9F2	B	301[A]	36/36	0.88	0.19	37,54,71,78	36
3	9F2	D	301[A]	36/36	0.92	0.14	30,47,65,73	36
4	FZS	B	302[B]	26/26	0.93	0.19	38,50,61,76	26
4	FZS	D	302[B]	26/26	0.96	0.16	33,45,60,64	26
2	PO4	A	301	5/5	0.96	0.15	29,30,31,35	0
2	PO4	C	301	5/5	0.98	0.12	33,34,36,36	0

The following is a graphical depiction of the model fit to experimental electron density of all instances of the Ligand of Interest. In addition, ligands with molecular weight > 250 and outliers as shown on the geometry validation Tables will also be included. Each fit is shown from different orientation to approximate a three-dimensional view.

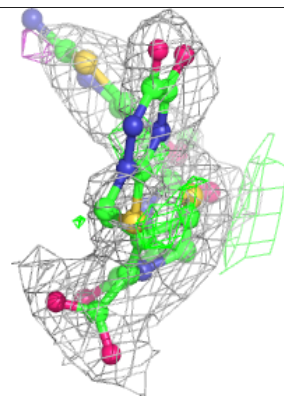
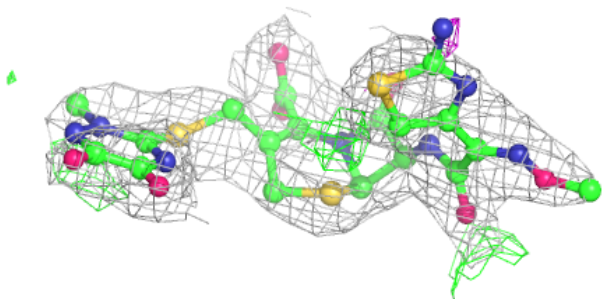
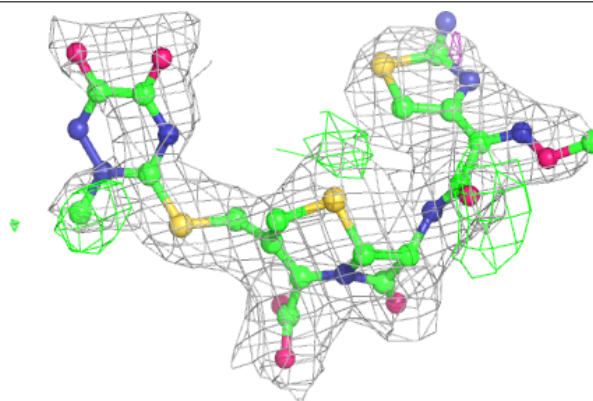


Electron density around 9F2 A 302:

$2mF_o-DF_c$ (at 0.7 rmsd) in gray
 mF_o-DF_c (at 3 rmsd) in purple (negative)
and green (positive)

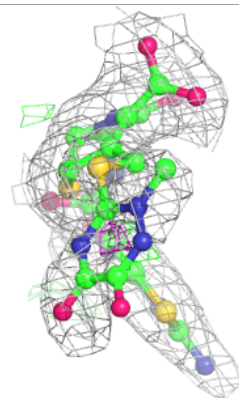
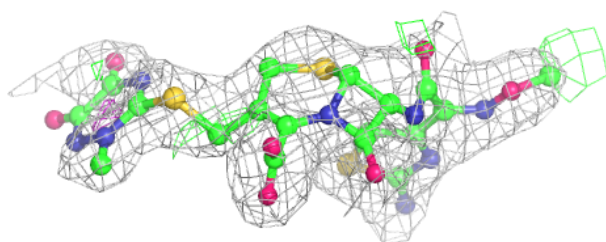
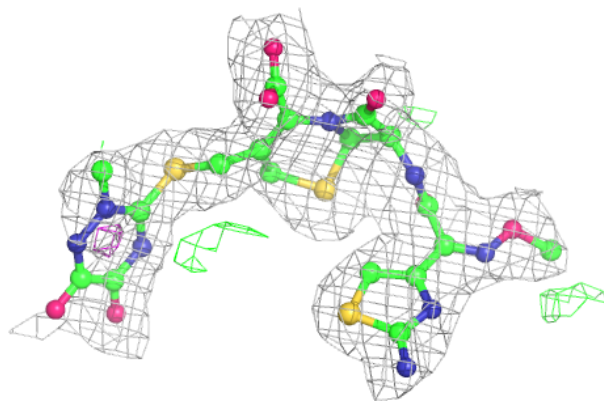
**Electron density around 9F2 B 301 (A):**

$2mF_o-DF_c$ (at 0.7 rmsd) in gray
 mF_o-DF_c (at 3 rmsd) in purple (negative)
and green (positive)

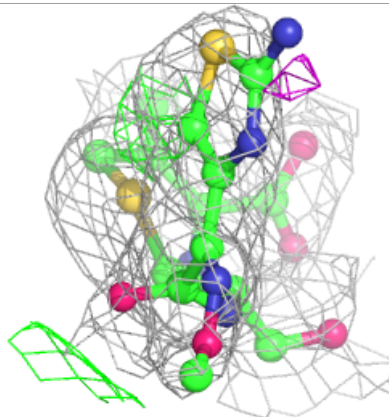
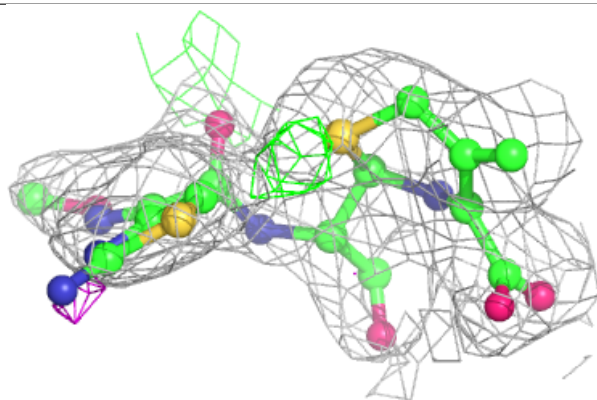
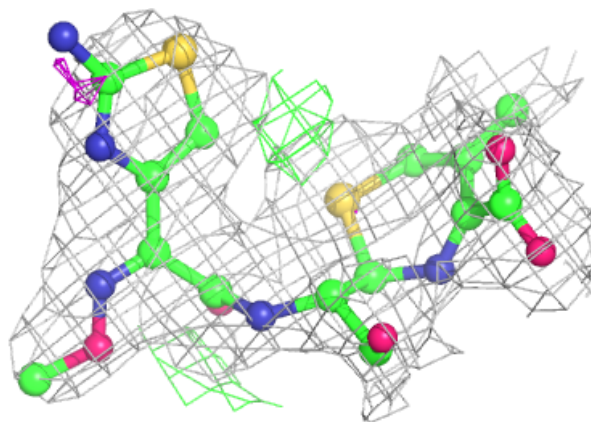


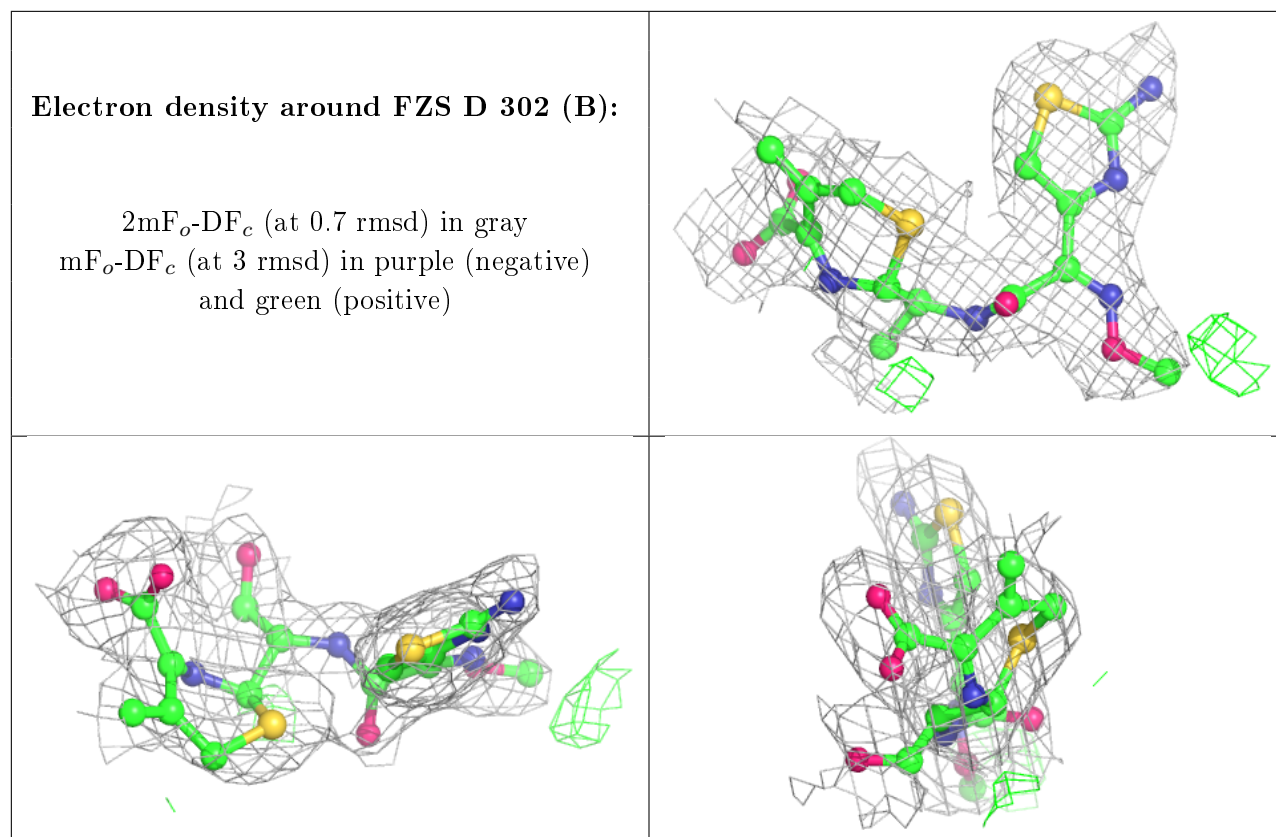
Electron density around 9F2 D 301 (A):

$2mF_o-DF_c$ (at 0.7 rmsd) in gray
 mF_o-DF_c (at 3 rmsd) in purple (negative)
and green (positive)

**Electron density around FZS B 302 (B):**

$2mF_o-DF_c$ (at 0.7 rmsd) in gray
 mF_o-DF_c (at 3 rmsd) in purple (negative)
and green (positive)





6.5 Other polymers [i](#)

There are no such residues in this entry.