



Full wwPDB X-ray Structure Validation Report ⓘ

Oct 16, 2023 – 11:58 PM EDT

PDB ID : 2AYS
Title : A conserved non-metallic binding site in the C-terminal lobe of lactoferrin: Structure of the complex of C-terminal lobe of bovine lactoferrin with N-acetyl galactosamine at 1.86 Å resolution
Authors : Singh, N.; Jabeen, T.; Sharma, S.; Singh, T.P.
Deposited on : 2005-09-08
Resolution : 1.86 Å (reported)

This is a Full wwPDB X-ray Structure Validation Report for a publicly released PDB entry.

We welcome your comments at validation@mail.wwpdb.org

A user guide is available at

<https://www.wwpdb.org/validation/2017/XrayValidationReportHelp>

with specific help available everywhere you see the ⓘ symbol.

The types of validation reports are described at

<http://www.wwpdb.org/validation/2017/FAQs#types>.

The following versions of software and data (see [references ⓘ](#)) were used in the production of this report:

MolProbity : 4.02b-467
Mogul : 1.8.5 (274361), CSD as541be (2020)
Xtrriage (Phenix) : **NOT EXECUTED**
EDS : **NOT EXECUTED**
Percentile statistics : 20191225.v01 (using entries in the PDB archive December 25th 2019)
Ideal geometry (proteins) : Engh & Huber (2001)
Ideal geometry (DNA, RNA) : Parkinson et al. (1996)
Validation Pipeline (wwPDB-VP) : 2.36

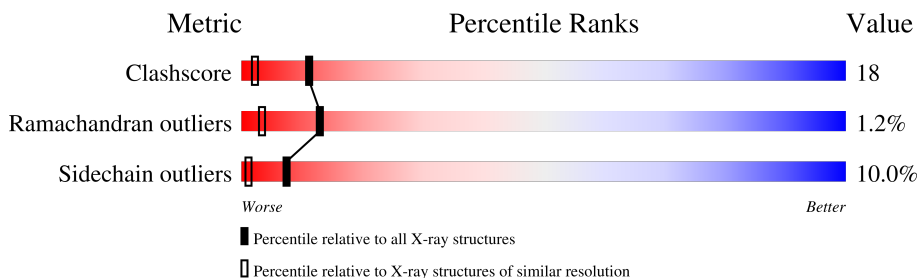
1 Overall quality at a glance

The following experimental techniques were used to determine the structure:

X-RAY DIFFRACTION

The reported resolution of this entry is 1.86 Å.

Percentile scores (ranging between 0-100) for global validation metrics of the entry are shown in the following graphic. The table shows the number of entries on which the scores are based.



Metric	Whole archive (#Entries)	Similar resolution (#Entries, resolution range(Å))
Clashscore	141614	2625 (1.86-1.86)
Ramachandran outliers	138981	2592 (1.86-1.86)
Sidechain outliers	138945	2592 (1.86-1.86)

The table below summarises the geometric issues observed across the polymeric chains and their fit to the electron density. The red, orange, yellow and green segments of the lower bar indicate the fraction of residues that contain outliers for ≥ 3 , 2, 1 and 0 types of geometric quality criteria respectively. A grey segment represents the fraction of residues that are not modelled. The numeric value for each fraction is indicated below the corresponding segment, with a dot representing fractions $\leq 5\%$.

Note EDS was not executed.

Mol	Chain	Length	Quality of chain
1	A	348	69% 22% 7% .
2	B	3	33% 67%
3	C	6	17% 83%

The following table lists non-polymeric compounds, carbohydrate monomers and non-standard residues in protein, DNA, RNA chains that are outliers for geometric or electron-density-fit criteria:

Mol	Type	Chain	Res	Chirality	Geometry	Clashes	Electron density
3	MAN	C	4	-	-	X	-
3	MAN	C	5	-	-	X	-

2 Entry composition [i](#)

There are 10 unique types of molecules in this entry. The entry contains 2995 atoms, of which 0 are hydrogens and 0 are deuteriums.

In the tables below, the ZeroOcc column contains the number of atoms modelled with zero occupancy, the AltConf column contains the number of residues with at least one atom in alternate conformation and the Trace column contains the number of residues modelled with at most 2 atoms.

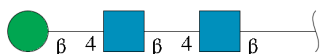
- Molecule 1 is a protein called Lactotransferrin.

Mol	Chain	Residues	Atoms					ZeroOcc	AltConf	Trace
			Total	C	N	O	S			
1	A	340	2593	1613	453	506	21	0	0	0

There are 2 discrepancies between the modelled and reference sequences:

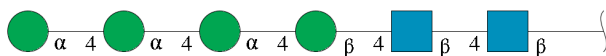
Chain	Residue	Modelled	Actual	Comment	Reference
A	565	LYS	ASN	SEE REMARK 999	UNP P24627
A	608	GLU	LYS	SEE REMARK 999	UNP P24627

- Molecule 2 is an oligosaccharide called beta-D-mannopyranose-(1-4)-2-acetamido-2-deoxy-beta-D-glucopyranose-(1-4)-2-acetamido-2-deoxy-beta-D-glucopyranose.



Mol	Chain	Residues	Atoms				ZeroOcc	AltConf	Trace
			Total	C	N	O			
2	B	3	39	22	2	15	0	0	0

- Molecule 3 is an oligosaccharide called alpha-D-mannopyranose-(1-4)-alpha-D-mannopyranose-(1-4)-alpha-D-mannopyranose-(1-4)-beta-D-mannopyranose-(1-4)-2-acetamido-2-deoxy-beta-D-glucopyranose-(1-4)-2-acetamido-2-deoxy-beta-D-glucopyranose.



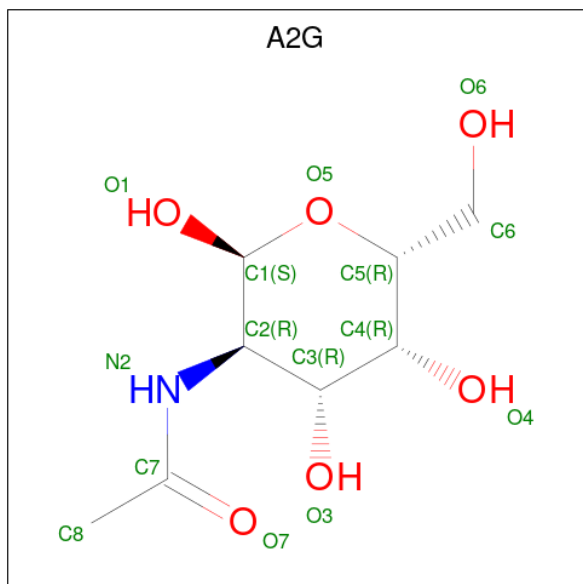
Mol	Chain	Residues	Atoms				ZeroOcc	AltConf	Trace
			Total	C	N	O			
3	C	6	72	40	2	30	0	0	0

- Molecule 4 is 2-acetamido-2-deoxy-beta-D-glucopyranose (three-letter code: NAG) (formula: $C_8H_{15}NO_6$).



Mol	Chain	Residues	Atoms				ZeroOcc	AltConf
			Total	C	N	O		
4	A	1	14	8	1	5	0	0

- Molecule 5 is 2-acetamido-2-deoxy-alpha-D-galactopyranose (three-letter code: A2G) (formula: $C_8H_{15}NO_6$).



Mol	Chain	Residues	Atoms				ZeroOcc	AltConf
			Total	C	N	O		
5	A	1	15	8	1	6	0	0

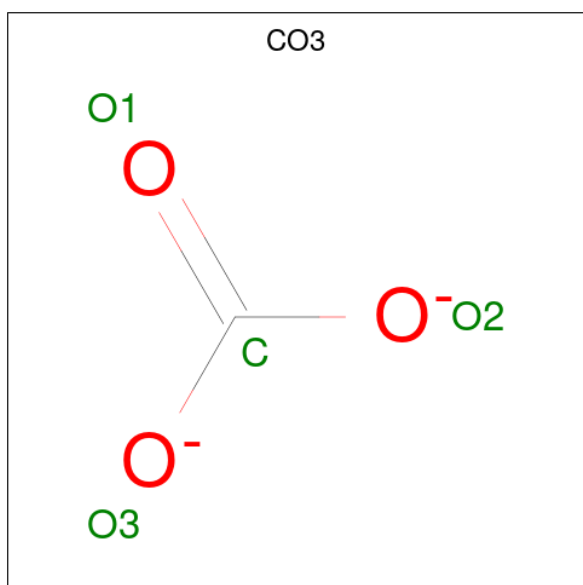
- Molecule 6 is ZINC ION (three-letter code: ZN) (formula: Zn).

Mol	Chain	Residues	Atoms		ZeroOcc	AltConf
6	A	2	Total	Zn	0	0
			2	2		

- Molecule 7 is FE (III) ION (three-letter code: FE) (formula: Fe).

Mol	Chain	Residues	Atoms		ZeroOcc	AltConf
7	A	1	Total	Fe	0	0
			1	1		

- Molecule 8 is CARBONATE ION (three-letter code: CO3) (formula: CO₃).



Mol	Chain	Residues	Atoms			ZeroOcc	AltConf
8	A	1	Total	C	O	0	0
			4	1	3		

- Molecule 9 is SULFATE ION (three-letter code: SO4) (formula: O₄S).



Mol	Chain	Residues	Atoms			ZeroOcc	AltConf
9	A	1	Total	O	S	0	0
			5	4	1		

- Molecule 10 is water.

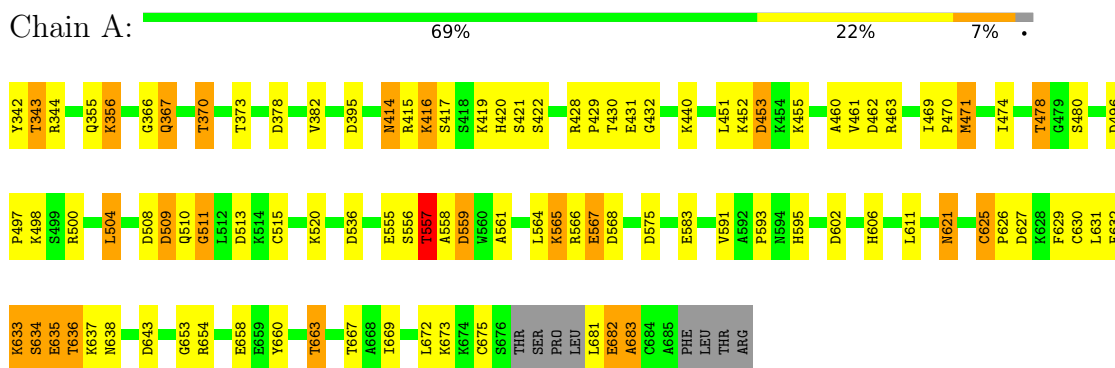
Mol	Chain	Residues	Atoms		ZeroOcc	AltConf
10	A	250	Total	O	0	0
			250	250		

3 Residue-property plots

These plots are drawn for all protein, RNA, DNA and oligosaccharide chains in the entry. The first graphic for a chain summarises the proportions of the various outlier classes displayed in the second graphic. The second graphic shows the sequence view annotated by issues in geometry. Residues are color-coded according to the number of geometric quality criteria for which they contain at least one outlier: green = 0, yellow = 1, orange = 2 and red = 3 or more. Stretches of 2 or more consecutive residues without any outlier are shown as a green connector. Residues present in the sample, but not in the model, are shown in grey.

Note EDS was not executed.

- Molecule 1: Lactotransferrin



- Molecule 2: beta-D-mannopyranose-(1-4)-2-acetamido-2-deoxy-beta-D-glucopyranose-(1-4)-2-acetamido-2-deoxy-beta-D-glucopyranose



- Molecule 3: alpha-D-mannopyranose-(1-4)-alpha-D-mannopyranose-(1-4)-alpha-D-mannopyranose-(1-4)-beta-D-mannopyranose-(1-4)-2-acetamido-2-deoxy-beta-D-glucopyranose-(1-4)-2-acetamido-2-deoxy-beta-D-glucopyranose



4 Data and refinement statistics

Xtrriage (Phenix) and EDS were not executed - this section is therefore incomplete.

Property	Value	Source
Space group	P 1 21 1	Depositor
Cell constants a, b, c, α , β , γ	63.49Å 50.40Å 65.91Å 90.00° 107.83° 90.00°	Depositor
Resolution (Å)	63.25 – 1.86	Depositor
% Data completeness (in resolution range)	95.3 (63.25-1.86)	Depositor
R_{merge}	(Not available)	Depositor
R_{sym}	(Not available)	Depositor
Refinement program	REFMAC 5.0	Depositor
R, R_{free}	0.181 , 0.209	Depositor
Estimated twinning fraction	No twinning to report.	Xtrriage
Total number of atoms	2995	wwPDB-VP
Average B, all atoms (Å ²)	28.0	wwPDB-VP

5 Model quality i

5.1 Standard geometry i

Bond lengths and bond angles in the following residue types are not validated in this section: ZN, A2G, NAG, BMA, MAN, SO4, CO3, FE

The Z score for a bond length (or angle) is the number of standard deviations the observed value is removed from the expected value. A bond length (or angle) with $|Z| > 5$ is considered an outlier worth inspection. RMSZ is the root-mean-square of all Z scores of the bond lengths (or angles).

Mol	Chain	Bond lengths		Bond angles	
		RMSZ	# Z >5	RMSZ	# Z >5
1	A	0.69	1/2640 (0.0%)	0.94	10/3575 (0.3%)

All (1) bond length outliers are listed below:

Mol	Chain	Res	Type	Atoms	Z	Observed(Å)	Ideal(Å)
1	A	471	MET	SD-CE	-6.90	1.39	1.77

All (10) bond angle outliers are listed below:

Mol	Chain	Res	Type	Atoms	Z	Observed(°)	Ideal(°)
1	A	378	ASP	CB-CG-OD2	7.84	125.35	118.30
1	A	536	ASP	CB-CG-OD2	7.78	125.30	118.30
1	A	453	ASP	CB-CG-OD2	6.51	124.16	118.30
1	A	683	ALA	N-CA-C	-5.78	95.39	111.00
1	A	511	GLY	O-C-N	5.61	131.67	122.70
1	A	627	ASP	CB-CG-OD2	5.53	123.28	118.30
1	A	568	ASP	CB-CG-OD2	5.35	123.11	118.30
1	A	511	GLY	C-N-CA	-5.12	108.90	121.70
1	A	559	ASP	CB-CG-OD2	5.05	122.84	118.30
1	A	602	ASP	CB-CG-OD2	5.03	122.82	118.30

There are no chirality outliers.

There are no planarity outliers.

5.2 Too-close contacts i

In the following table, the Non-H and H(model) columns list the number of non-hydrogen atoms and hydrogen atoms in the chain respectively. The H(added) column lists the number of hydrogen atoms added and optimized by MolProbity. The Clashes column lists the number of clashes within

the asymmetric unit, whereas Symm-Clashes lists symmetry-related clashes.

Mol	Chain	Non-H	H(model)	H(added)	Clashes	Symm-Clashes
1	A	2593	0	2510	85	0
2	B	39	0	34	0	0
3	C	72	0	61	12	0
4	A	14	0	13	0	0
5	A	15	0	12	3	0
6	A	2	0	0	0	0
7	A	1	0	0	0	0
8	A	4	0	0	0	0
9	A	5	0	0	0	0
10	A	250	0	0	8	0
All	All	2995	0	2630	96	0

The all-atom clashscore is defined as the number of clashes found per 1000 atoms (including hydrogen atoms). The all-atom clashscore for this structure is 18.

All (96) close contacts within the same asymmetric unit are listed below, sorted by their clash magnitude.

Atom-1	Atom-2	Interatomic distance (Å)	Clash overlap (Å)
1:A:343:THR:HA	1:A:606:HIS:NE2	1.66	1.10
1:A:343:THR:HA	1:A:606:HIS:CE1	1.86	1.10
1:A:565:LYS:HD2	1:A:567:GLU:H	1.12	1.10
1:A:565:LYS:CD	1:A:567:GLU:H	1.82	0.92
1:A:565:LYS:HD2	1:A:567:GLU:N	1.89	0.86
1:A:565:LYS:HD3	1:A:566:ARG:N	1.93	0.82
1:A:625:CYS:O	1:A:630:CYS:SG	2.38	0.82
1:A:478:THR:HG22	1:A:480:SER:H	1.46	0.80
1:A:638:ASN:HD22	1:A:643:ASP:H	1.34	0.72
3:C:4:MAN:C3	3:C:5:MAN:O5	2.37	0.72
3:C:2:NAG:O3	3:C:3:BMA:H5	1.89	0.72
1:A:430:THR:OG1	5:A:690:A2G:H4	1.89	0.71
1:A:635:GLU:O	1:A:636:THR:HG22	1.90	0.71
1:A:474:ILE:O	1:A:478:THR:HB	1.92	0.69
1:A:508:ASP:O	1:A:509:ASP:C	2.31	0.69
1:A:508:ASP:C	1:A:508:ASP:OD1	2.29	0.69
1:A:342:TYR:HB2	10:A:2169:HOH:O	1.93	0.68
1:A:343:THR:CA	1:A:606:HIS:CE1	2.71	0.67
1:A:342:TYR:O	1:A:606:HIS:HE1	1.81	0.62
1:A:366:GLY:O	1:A:367:GLN:HB2	2.00	0.62
1:A:415:ARG:NH2	1:A:432:GLY:O	2.30	0.61
1:A:478:THR:CG2	1:A:480:SER:HB3	2.30	0.61

Continued on next page...

Continued from previous page...

Atom-1	Atom-2	Interatomic distance (Å)	Clash overlap (Å)
3:C:4:MAN:H3	3:C:5:MAN:O5	1.98	0.60
1:A:593:PRO:HB3	5:A:690:A2G:O6	2.01	0.60
1:A:575:ASP:HB3	10:A:2186:HOH:O	2.02	0.59
1:A:660:TYR:O	5:A:690:A2G:H6	2.03	0.59
1:A:417:SER:HB2	1:A:431:GLU:OE2	2.04	0.58
1:A:638:ASN:ND2	1:A:643:ASP:H	2.01	0.57
3:C:4:MAN:H4	3:C:6:MAN:C1	2.35	0.56
1:A:636:THR:HG21	10:A:2064:HOH:O	2.04	0.56
1:A:625:CYS:C	1:A:630:CYS:SG	2.84	0.56
1:A:419:LYS:HZ3	1:A:420:HIS:CD2	2.24	0.55
1:A:508:ASP:O	1:A:508:ASP:OD1	2.24	0.55
3:C:2:NAG:O3	3:C:3:BMA:C1	2.54	0.55
1:A:342:TYR:O	1:A:606:HIS:CE1	2.59	0.55
1:A:478:THR:HG22	1:A:480:SER:N	2.19	0.55
1:A:478:THR:HG23	1:A:480:SER:HB3	1.88	0.55
1:A:508:ASP:O	1:A:510:GLN:N	2.41	0.53
1:A:513:ASP:OD2	1:A:520:LYS:NZ	2.28	0.53
1:A:565:LYS:HD3	1:A:565:LYS:C	2.27	0.53
1:A:342:TYR:C	1:A:344:ARG:H	2.11	0.52
1:A:565:LYS:HD2	1:A:567:GLU:HB2	1.90	0.52
1:A:561:ALA:HA	1:A:564:LEU:HG	1.91	0.51
1:A:416:LYS:NZ	1:A:416:LYS:HB3	2.25	0.51
1:A:461:VAL:O	1:A:462:ASP:HB2	2.10	0.51
3:C:4:MAN:O3	3:C:5:MAN:H5	2.10	0.51
1:A:469:ILE:HB	1:A:470:PRO:HD3	1.93	0.51
1:A:669:ILE:O	1:A:673:LYS:HG2	2.10	0.50
1:A:382:VAL:HG22	1:A:682:GLU:HG2	1.93	0.50
1:A:460:ALA:HB3	1:A:463:ARG:HD3	1.92	0.50
1:A:417:SER:CB	1:A:431:GLU:OE2	2.59	0.49
1:A:632:PHE:O	1:A:633:LYS:HE3	2.12	0.49
1:A:634:SER:O	1:A:637:LYS:HG3	2.11	0.49
1:A:663:THR:O	1:A:667:THR:HG23	2.11	0.49
1:A:556:SER:C	1:A:557:THR:HG23	2.32	0.49
1:A:395:ASP:HA	1:A:595:HIS:CD2	2.47	0.48
3:C:4:MAN:O6	3:C:6:MAN:H61	2.14	0.48
3:C:4:MAN:H4	3:C:6:MAN:O5	2.14	0.47
1:A:498:LYS:HB2	1:A:498:LYS:HE2	1.70	0.47
1:A:382:VAL:CG2	1:A:682:GLU:HG2	2.44	0.47
1:A:520:LYS:HB3	1:A:520:LYS:HE2	1.67	0.46
3:C:4:MAN:O3	3:C:5:MAN:O5	2.34	0.46
1:A:681:LEU:O	1:A:682:GLU:CB	2.64	0.46

Continued on next page...

Continued from previous page...

Atom-1	Atom-2	Interatomic distance (Å)	Clash overlap (Å)
1:A:416:LYS:HB3	1:A:416:LYS:HZ3	1.81	0.46
1:A:653:GLY:O	1:A:654:ARG:C	2.55	0.46
1:A:414:ASN:ND2	10:A:2106:HOH:O	2.48	0.45
1:A:355:GLN:HG3	1:A:373:THR:OG1	2.15	0.45
1:A:419:LYS:HZ3	1:A:420:HIS:CE1	2.33	0.45
3:C:3:BMA:H62	3:C:4:MAN:C5	2.46	0.45
3:C:4:MAN:O3	3:C:5:MAN:C5	2.65	0.45
1:A:416:LYS:HG2	10:A:2083:HOH:O	2.17	0.45
1:A:455:LYS:HB3	1:A:504:LEU:HD21	1.99	0.44
1:A:555:GLU:OE2	3:C:5:MAN:H3	2.17	0.44
1:A:621:ASN:HD22	1:A:621:ASN:HA	1.54	0.44
1:A:672:LEU:O	1:A:675:CYS:HB2	2.17	0.44
1:A:343:THR:CA	1:A:606:HIS:NE2	2.58	0.44
1:A:451:LEU:HD23	1:A:451:LEU:HA	1.87	0.44
1:A:452:LYS:O	1:A:453:ASP:HB2	2.18	0.44
1:A:565:LYS:HE3	1:A:567:GLU:HB2	1.99	0.44
1:A:658:GLU:CD	10:A:2216:HOH:O	2.56	0.44
1:A:428:ARG:HA	1:A:429:PRO:HD2	1.89	0.43
1:A:366:GLY:O	1:A:367:GLN:CB	2.66	0.43
1:A:625:CYS:HA	1:A:629:PHE:O	2.19	0.43
1:A:626:PRO:HD2	10:A:2137:HOH:O	2.19	0.43
1:A:565:LYS:CD	1:A:565:LYS:C	2.87	0.42
1:A:343:THR:CA	1:A:606:HIS:HE1	2.31	0.42
1:A:343:THR:HG23	1:A:343:THR:O	2.19	0.42
1:A:508:ASP:O	1:A:511:GLY:N	2.45	0.41
1:A:414:ASN:ND2	1:A:430:THR:HG22	2.35	0.41
1:A:344:ARG:HH12	1:A:370:THR:HG21	1.85	0.41
1:A:625:CYS:HB3	1:A:626:PRO:HD3	2.02	0.41
1:A:356:LYS:HD3	10:A:2160:HOH:O	2.21	0.41
1:A:344:ARG:NH1	1:A:344:ARG:HG2	2.36	0.40
1:A:496:ASP:HA	1:A:497:PRO:HD3	1.99	0.40
1:A:556:SER:O	1:A:558:ALA:N	2.54	0.40
1:A:471:MET:HE1	1:A:474:ILE:HD12	2.03	0.40

There are no symmetry-related clashes.

5.3 Torsion angles [i](#)

5.3.1 Protein backbone [i](#)

In the following table, the Percentiles column shows the percent Ramachandran outliers of the chain as a percentile score with respect to all X-ray entries followed by that with respect to entries of similar resolution.

The Analysed column shows the number of residues for which the backbone conformation was analysed, and the total number of residues.

Mol	Chain	Analysed	Favoured	Allowed	Outliers	Percentiles
1	A	336/348 (97%)	318 (95%)	14 (4%)	4 (1%)	13 3

All (4) Ramachandran outliers are listed below:

Mol	Chain	Res	Type
1	A	509	ASP
1	A	683	ALA
1	A	634	SER
1	A	557	THR

5.3.2 Protein sidechains [i](#)

In the following table, the Percentiles column shows the percent sidechain outliers of the chain as a percentile score with respect to all X-ray entries followed by that with respect to entries of similar resolution.

The Analysed column shows the number of residues for which the sidechain conformation was analysed, and the total number of residues.

Mol	Chain	Analysed	Rotameric	Outliers	Percentiles
1	A	281/289 (97%)	253 (90%)	28 (10%)	7 1

All (28) residues with a non-rotameric sidechain are listed below:

Mol	Chain	Res	Type
1	A	343	THR
1	A	356	LYS
1	A	367	GLN
1	A	370	THR
1	A	414	ASN
1	A	416	LYS
1	A	421	SER

Continued on next page...

Continued from previous page...

Mol	Chain	Res	Type
1	A	422	SER
1	A	440	LYS
1	A	478	THR
1	A	500	ARG
1	A	504	LEU
1	A	515	CYS
1	A	557	THR
1	A	559	ASP
1	A	565	LYS
1	A	567	GLU
1	A	583	GLU
1	A	591	VAL
1	A	611	LEU
1	A	621	ASN
1	A	625	CYS
1	A	631	LEU
1	A	633	LYS
1	A	635	GLU
1	A	636	THR
1	A	663	THR
1	A	682	GLU

Sometimes sidechains can be flipped to improve hydrogen bonding and reduce clashes. All (5) such sidechains are listed below:

Mol	Chain	Res	Type
1	A	367	GLN
1	A	414	ASN
1	A	420	HIS
1	A	621	ASN
1	A	638	ASN

5.3.3 RNA [i](#)

There are no RNA molecules in this entry.

5.4 Non-standard residues in protein, DNA, RNA chains [i](#)

There are no non-standard protein/DNA/RNA residues in this entry.

5.5 Carbohydrates i

9 monosaccharides are modelled in this entry.

In the following table, the Counts columns list the number of bonds (or angles) for which Mogul statistics could be retrieved, the number of bonds (or angles) that are observed in the model and the number of bonds (or angles) that are defined in the Chemical Component Dictionary. The Link column lists molecule types, if any, to which the group is linked. The Z score for a bond length (or angle) is the number of standard deviations the observed value is removed from the expected value. A bond length (or angle) with $|Z| > 2$ is considered an outlier worth inspection. RMSZ is the root-mean-square of all Z scores of the bond lengths (or angles).

Mol	Type	Chain	Res	Link	Bond lengths			Bond angles		
					Counts	RMSZ	# Z > 2	Counts	RMSZ	# Z > 2
2	NAG	B	1	1,2	14,14,15	0.68	0	17,19,21	0.96	0
2	NAG	B	2	2	14,14,15	0.52	0	17,19,21	1.44	1 (5%)
2	BMA	B	3	2	11,11,12	0.46	0	15,15,17	2.42	3 (20%)
3	NAG	C	1	1,3	14,14,15	1.11	1 (7%)	17,19,21	1.08	1 (5%)
3	NAG	C	2	3	14,14,15	0.56	0	17,19,21	1.38	2 (11%)
3	BMA	C	3	3	11,11,12	0.92	0	15,15,17	1.90	4 (26%)
3	MAN	C	4	3	11,11,12	0.59	0	15,15,17	1.59	4 (26%)
3	MAN	C	5	3	11,11,12	0.69	0	15,15,17	1.60	2 (13%)
3	MAN	C	6	3	11,11,12	0.44	0	15,15,17	1.23	2 (13%)

In the following table, the Chirals column lists the number of chiral outliers, the number of chiral centers analysed, the number of these observed in the model and the number defined in the Chemical Component Dictionary. Similar counts are reported in the Torsion and Rings columns. '-' means no outliers of that kind were identified.

Mol	Type	Chain	Res	Link	Chirals	Torsions	Rings
2	NAG	B	1	1,2	-	0/6/23/26	0/1/1/1
2	NAG	B	2	2	-	0/6/23/26	0/1/1/1
2	BMA	B	3	2	-	2/2/19/22	0/1/1/1
3	NAG	C	1	1,3	-	0/6/23/26	0/1/1/1
3	NAG	C	2	3	-	4/6/23/26	0/1/1/1
3	BMA	C	3	3	-	1/2/19/22	0/1/1/1
3	MAN	C	4	3	-	2/2/19/22	0/1/1/1
3	MAN	C	5	3	-	2/2/19/22	0/1/1/1
3	MAN	C	6	3	-	1/2/19/22	0/1/1/1

All (1) bond length outliers are listed below:

Mol	Chain	Res	Type	Atoms	Z	Observed(Å)	Ideal(Å)
3	C	1	NAG	C1-C2	3.29	1.57	1.52

All (19) bond angle outliers are listed below:

Mol	Chain	Res	Type	Atoms	Z	Observed(°)	Ideal(°)
2	B	3	BMA	C1-O5-C5	7.35	122.16	112.19
2	B	2	NAG	C1-O5-C5	3.94	117.53	112.19
3	C	3	BMA	C1-O5-C5	-3.94	106.85	112.19
3	C	5	MAN	O4-C4-C5	3.86	118.88	109.30
2	B	3	BMA	O5-C1-C2	3.82	116.66	110.77
3	C	5	MAN	C1-O5-C5	3.65	117.14	112.19
3	C	3	BMA	C3-C4-C5	3.64	116.73	110.24
2	B	3	BMA	C2-C3-C4	-3.56	104.73	110.89
3	C	3	BMA	C2-C3-C4	3.33	116.66	110.89
3	C	2	NAG	C1-O5-C5	2.95	116.19	112.19
3	C	4	MAN	C2-C3-C4	2.92	115.94	110.89
3	C	6	MAN	C1-O5-C5	2.87	116.08	112.19
3	C	3	BMA	O5-C1-C2	-2.69	106.63	110.77
3	C	4	MAN	O5-C5-C6	2.57	111.23	107.20
3	C	4	MAN	C3-C4-C5	2.51	114.72	110.24
3	C	1	NAG	O5-C1-C2	-2.47	107.39	111.29
3	C	4	MAN	O3-C3-C2	-2.47	105.27	109.99
3	C	2	NAG	C2-N2-C7	2.29	126.16	122.90
3	C	6	MAN	C1-C2-C3	2.21	112.38	109.67

There are no chirality outliers.

All (12) torsion outliers are listed below:

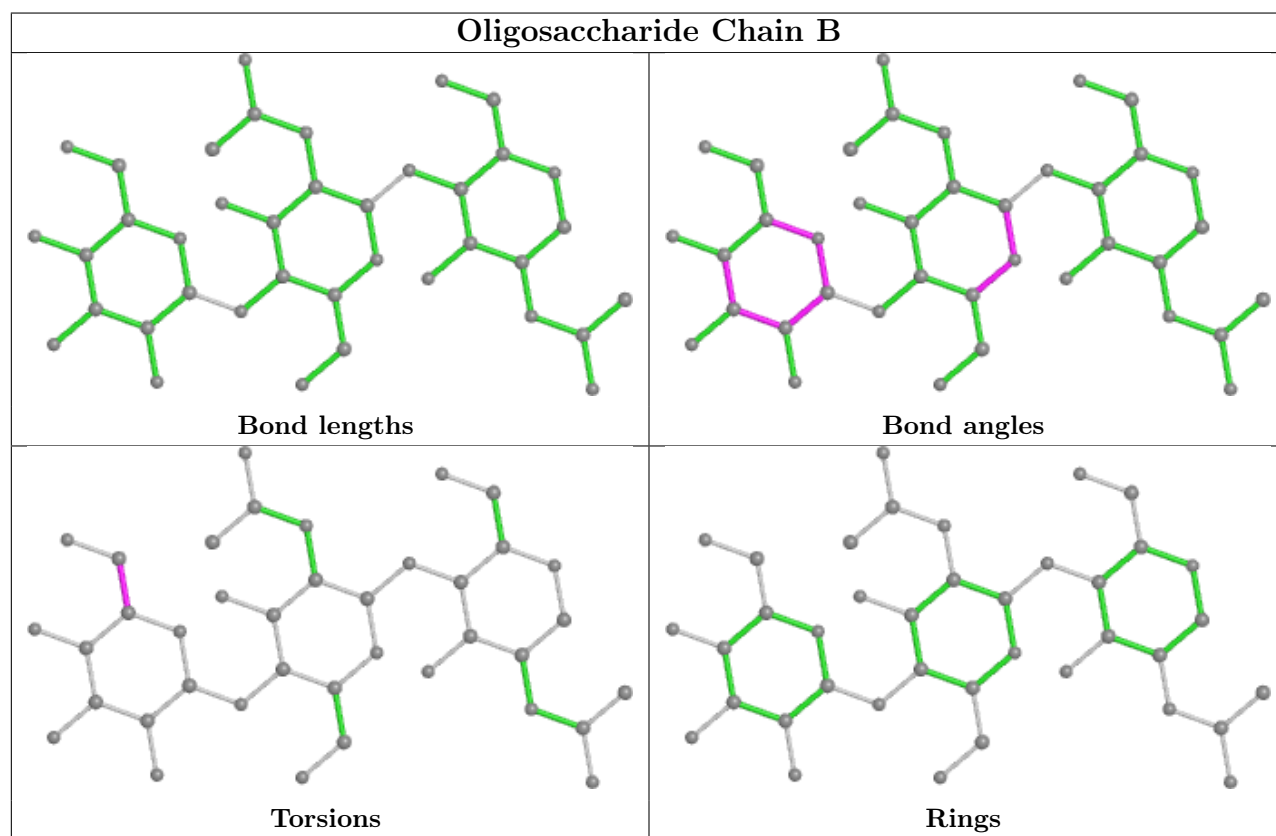
Mol	Chain	Res	Type	Atoms
2	B	3	BMA	O5-C5-C6-O6
3	C	5	MAN	O5-C5-C6-O6
3	C	2	NAG	O5-C5-C6-O6
3	C	2	NAG	C4-C5-C6-O6
3	C	5	MAN	C4-C5-C6-O6
2	B	3	BMA	C4-C5-C6-O6
3	C	6	MAN	O5-C5-C6-O6
3	C	3	BMA	C4-C5-C6-O6
3	C	4	MAN	C4-C5-C6-O6
3	C	2	NAG	C8-C7-N2-C2
3	C	2	NAG	O7-C7-N2-C2
3	C	4	MAN	O5-C5-C6-O6

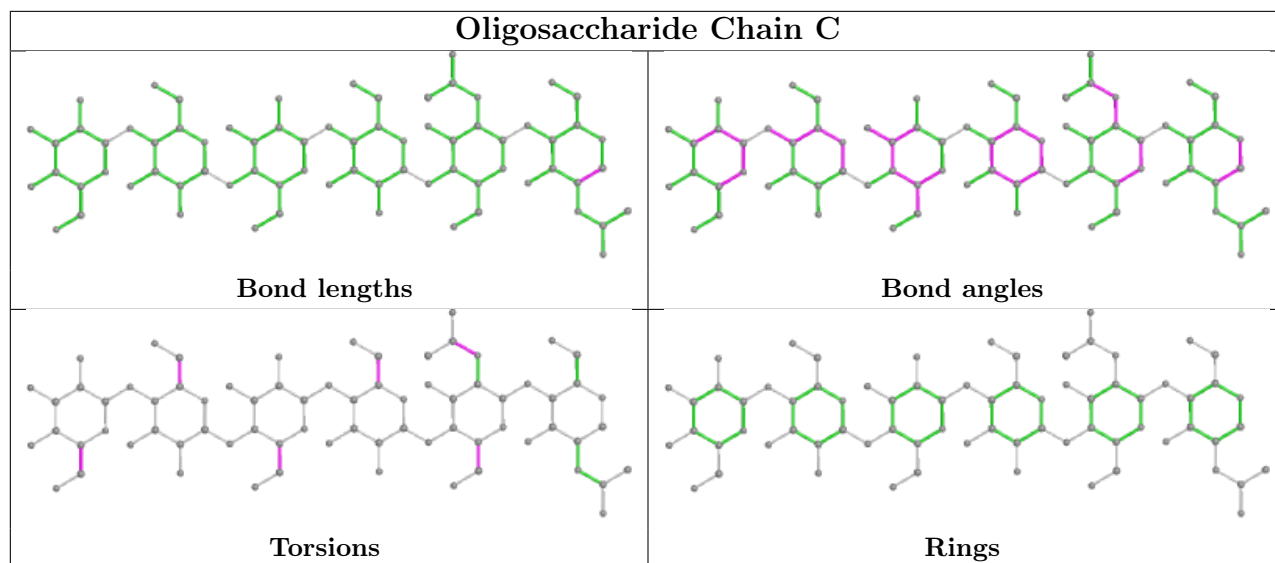
There are no ring outliers.

5 monomers are involved in 12 short contacts:

Mol	Chain	Res	Type	Clashes	Symm-Clashes
3	C	4	MAN	9	0
3	C	6	MAN	3	0
3	C	5	MAN	6	0
3	C	3	BMA	3	0
3	C	2	NAG	2	0

The following is a two-dimensional graphical depiction of Mogul quality analysis of bond lengths, bond angles, torsion angles, and ring geometry for oligosaccharide.





5.6 Ligand geometry [i](#)

Of 7 ligands modelled in this entry, 3 are monoatomic - leaving 4 for Mogul analysis.

In the following table, the Counts columns list the number of bonds (or angles) for which Mogul statistics could be retrieved, the number of bonds (or angles) that are observed in the model and the number of bonds (or angles) that are defined in the Chemical Component Dictionary. The Link column lists molecule types, if any, to which the group is linked. The Z score for a bond length (or angle) is the number of standard deviations the observed value is removed from the expected value. A bond length (or angle) with $|Z| > 2$ is considered an outlier worth inspection. RMSZ is the root-mean-square of all Z scores of the bond lengths (or angles).

Mol	Type	Chain	Res	Link	Bond lengths			Bond angles		
					Counts	RMSZ	# $ Z > 2$	Counts	RMSZ	# $ Z > 2$
8	CO3	A	1687	7	2,3,3	0.52	0	2,3,3	1.11	0
9	SO4	A	2001	-	4,4,4	0.10	0	6,6,6	0.20	0
5	A2G	A	690	-	15,15,15	0.37	0	21,21,21	1.46	2 (9%)
4	NAG	A	1	1	14,14,15	0.65	1 (7%)	17,19,21	1.35	3 (17%)

In the following table, the Chirals column lists the number of chiral outliers, the number of chiral centers analysed, the number of these observed in the model and the number defined in the Chemical Component Dictionary. Similar counts are reported in the Torsion and Rings columns. '-' means no outliers of that kind were identified.

Mol	Type	Chain	Res	Link	Chirals	Torsions	Rings
5	A2G	A	690	-	-	2/6/26/26	0/1/1/1
4	NAG	A	1	1	-	0/6/23/26	0/1/1/1

All (1) bond length outliers are listed below:

Mol	Chain	Res	Type	Atoms	Z	Observed(Å)	Ideal(Å)
4	A	1	NAG	O5-C1	-2.03	1.40	1.43

All (5) bond angle outliers are listed below:

Mol	Chain	Res	Type	Atoms	Z	Observed(°)	Ideal(°)
5	A	690	A2G	C1-C2-N2	-4.31	105.73	110.73
5	A	690	A2G	C1-O5-C5	3.11	119.54	113.66
4	A	1	NAG	C1-O5-C5	2.77	115.94	112.19
4	A	1	NAG	C6-C5-C4	-2.77	106.52	113.00
4	A	1	NAG	O5-C1-C2	-2.61	107.16	111.29

There are no chirality outliers.

All (2) torsion outliers are listed below:

Mol	Chain	Res	Type	Atoms
5	A	690	A2G	C4-C5-C6-O6
5	A	690	A2G	O5-C5-C6-O6

There are no ring outliers.

1 monomer is involved in 3 short contacts:

Mol	Chain	Res	Type	Clashes	Symm-Clashes
5	A	690	A2G	3	0

5.7 Other polymers [i](#)

There are no such residues in this entry.

5.8 Polymer linkage issues [i](#)

There are no chain breaks in this entry.

6 Fit of model and data

6.1 Protein, DNA and RNA chains

EDS was not executed - this section is therefore empty.

6.2 Non-standard residues in protein, DNA, RNA chains

EDS was not executed - this section is therefore empty.

6.3 Carbohydrates

EDS was not executed - this section is therefore empty.

6.4 Ligands

EDS was not executed - this section is therefore empty.

6.5 Other polymers

EDS was not executed - this section is therefore empty.