



# Full wwPDB X-ray Structure Validation Report ⓘ

Jul 31, 2023 – 06:49 AM EDT

PDB ID : 2AY7  
Title : AROMATIC AMINO ACID AMINOTRANSFERASE WITH 4-PHENYLBUTYRIC ACID  
Authors : Okamoto, A.; Hirotsu, K.; Kagamiyama, H.  
Deposited on : 1998-08-06  
Resolution : 2.40 Å(reported)

This is a Full wwPDB X-ray Structure Validation Report for a publicly released PDB entry.

We welcome your comments at [validation@mail.wwpdb.org](mailto:validation@mail.wwpdb.org)

A user guide is available at

<https://www.wwpdb.org/validation/2017/XrayValidationReportHelp>

with specific help available everywhere you see the ⓘ symbol.

The types of validation reports are described at

<http://www.wwpdb.org/validation/2017/FAQs#types>.

---

The following versions of software and data (see [references ⓘ](#)) were used in the production of this report:

MolProbity : 4.02b-467  
Mogul : 1.8.5 (274361), CSD as541be (2020)  
Xtrriage (Phenix) : **NOT EXECUTED**  
EDS : **NOT EXECUTED**  
Percentile statistics : 20191225.v01 (using entries in the PDB archive December 25th 2019)  
Ideal geometry (proteins) : Engh & Huber (2001)  
Ideal geometry (DNA, RNA) : Parkinson et al. (1996)  
Validation Pipeline (wwPDB-VP) : 2.34

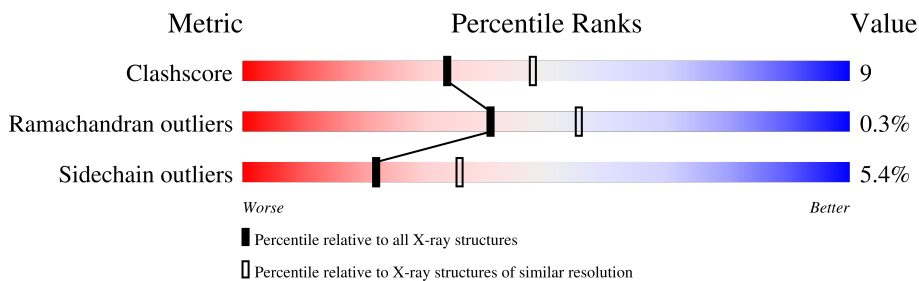
# 1 Overall quality at a glance

The following experimental techniques were used to determine the structure:

*X-RAY DIFFRACTION*

The reported resolution of this entry is 2.40 Å.

Percentile scores (ranging between 0-100) for global validation metrics of the entry are shown in the following graphic. The table shows the number of entries on which the scores are based.



Metric	Whole archive (#Entries)	Similar resolution (#Entries, resolution range(Å))
Clashscore	141614	4398 (2.40-2.40)
Ramachandran outliers	138981	4318 (2.40-2.40)
Sidechain outliers	138945	4319 (2.40-2.40)

The table below summarises the geometric issues observed across the polymeric chains and their fit to the electron density. The red, orange, yellow and green segments of the lower bar indicate the fraction of residues that contain outliers for  $\geq 3$ , 2, 1 and 0 types of geometric quality criteria respectively. A grey segment represents the fraction of residues that are not modelled. The numeric value for each fraction is indicated below the corresponding segment, with a dot representing fractions  $\leq 5\%$ .

Note EDS was not executed.

Mol	Chain	Length	Quality of chain
1	A	394	
1	B	394	

## 2 Entry composition [i](#)

There are 4 unique types of molecules in this entry. The entry contains 6232 atoms, of which 1 is hydrogen and 0 are deuteriums.

In the tables below, the ZeroOcc column contains the number of atoms modelled with zero occupancy, the AltConf column contains the number of residues with at least one atom in alternate conformation and the Trace column contains the number of residues modelled with at most 2 atoms.

- Molecule 1 is a protein called AROMATIC AMINO ACID AMINOTRANSFERASE.

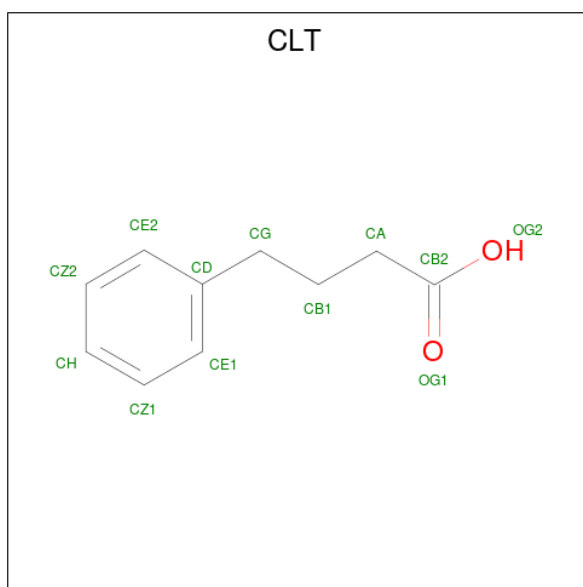
Mol	Chain	Residues	Atoms					ZeroOcc	AltConf	Trace
			Total	C	N	O	S			
1	A	394	Total	C	N	O	S	0	0	0
			2996	1884	527	565	20			
1	B	388	Total	C	N	O	S	0	0	0
			2945	1855	514	556	20			

- Molecule 2 is PYRIDOXAL-5'-PHOSPHATE (three-letter code: PLP) (formula: C<sub>8</sub>H<sub>10</sub>NO<sub>6</sub>P).



Mol	Chain	Residues	Atoms					ZeroOcc	AltConf
			Total	C	N	O	P		
2	A	1	Total	C	N	O	P	0	0
			15	8	1	5	1		
2	B	1	Total	C	N	O	P	0	0
			15	8	1	5	1		

- Molecule 3 is 4-PHENYL-BUTANOIC ACID (three-letter code: CLT) (formula: C<sub>10</sub>H<sub>12</sub>O<sub>2</sub>).



Mol	Chain	Residues	Atoms				ZeroOcc	AltConf
			Total	C	H	O		
3	B	1	12	9	1	2	0	0

- Molecule 4 is water.


Mol	Chain	Residues	Atoms		ZeroOcc	AltConf
4	A	127	Total	O	0	0
			127	127		
4	B	122	Total	O	0	0
			122	122		

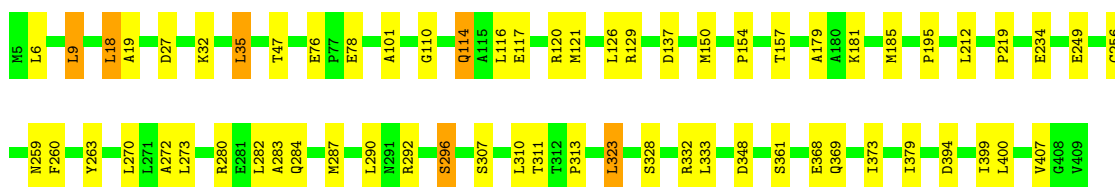
### 3 Residue-property plots [i](#)

These plots are drawn for all protein, RNA, DNA and oligosaccharide chains in the entry. The first graphic for a chain summarises the proportions of the various outlier classes displayed in the second graphic. The second graphic shows the sequence view annotated by issues in geometry. Residues are color-coded according to the number of geometric quality criteria for which they contain at least one outlier: green = 0, yellow = 1, orange = 2 and red = 3 or more. Stretches of 2 or more consecutive residues without any outlier are shown as a green connector. Residues present in the sample, but not in the model, are shown in grey.

Note EDS was not executed.

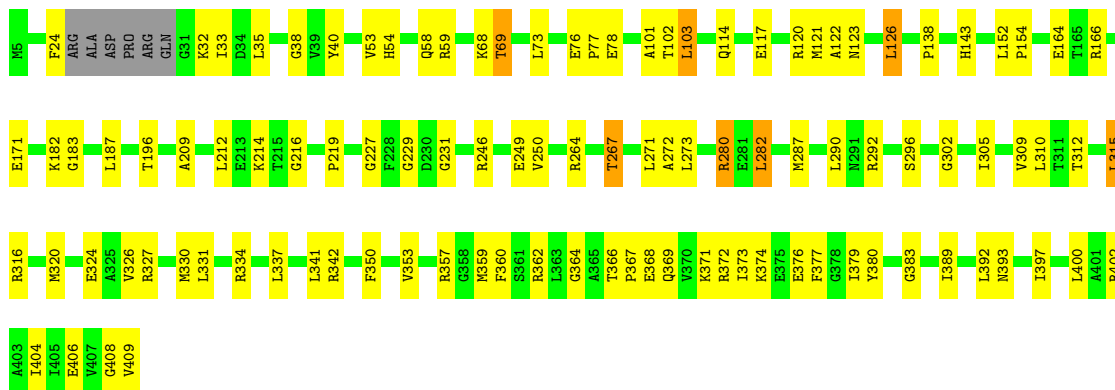
- Molecule 1: AROMATIC AMINO ACID AMINOTRANSFERASE

Chain A:  84% 15%



- Molecule 1: AROMATIC AMINO ACID AMINOTRANSFERASE

Chain B:  72% 25%



## 4 Data and refinement statistics

Xtrriage (Phenix) and EDS were not executed - this section is therefore incomplete.

Property	Value	Source
Space group	P 21 21 21	Depositor
Cell constants a, b, c, $\alpha$ , $\beta$ , $\gamma$	124.08Å 121.79Å 55.21Å 90.00° 90.00° 90.00°	Depositor
Resolution (Å)	6.00 – 2.40	Depositor
% Data completeness (in resolution range)	73.0 (6.00-2.40)	Depositor
$R_{merge}$	0.07	Depositor
$R_{sym}$	(Not available)	Depositor
Refinement program	X-PLOR 3.1	Depositor
R, $R_{free}$	0.157 , 0.219	Depositor
Estimated twinning fraction	No twinning to report.	Xtrriage
Total number of atoms	6232	wwPDB-VP
Average B, all atoms (Å <sup>2</sup> )	26.0	wwPDB-VP

## 5 Model quality [i](#)

### 5.1 Standard geometry [i](#)

Bond lengths and bond angles in the following residue types are not validated in this section: PLP, CLT

The Z score for a bond length (or angle) is the number of standard deviations the observed value is removed from the expected value. A bond length (or angle) with  $|Z| > 5$  is considered an outlier worth inspection. RMSZ is the root-mean-square of all Z scores of the bond lengths (or angles).

Mol	Chain	Bond lengths		Bond angles	
		RMSZ	# Z  >5	RMSZ	# Z  >5
1	A	0.33	0/3048	0.58	0/4119
1	B	0.32	0/2995	0.59	0/4046
All	All	0.32	0/6043	0.59	0/8165

There are no bond length outliers.

There are no bond angle outliers.

There are no chirality outliers.

There are no planarity outliers.

### 5.2 Too-close contacts [i](#)

In the following table, the Non-H and H(model) columns list the number of non-hydrogen atoms and hydrogen atoms in the chain respectively. The H(added) column lists the number of hydrogen atoms added and optimized by MolProbity. The Clashes column lists the number of clashes within the asymmetric unit, whereas Symm-Clashes lists symmetry-related clashes.

Mol	Chain	Non-H	H(model)	H(added)	Clashes	Symm-Clashes
1	A	2996	0	3004	33	0
1	B	2945	0	2953	72	0
2	A	15	0	7	0	0
2	B	15	0	6	0	0
3	B	11	1	9	1	0
4	A	127	0	0	3	0
4	B	122	0	0	2	0
All	All	6231	1	5979	102	0

The all-atom clashscore is defined as the number of clashes found per 1000 atoms (including hydrogen atoms). The all-atom clashscore for this structure is 9.

All (102) close contacts within the same asymmetric unit are listed below, sorted by their clash magnitude.

Atom-1	Atom-2	Interatomic distance (Å)	Clash overlap (Å)
3:B:414:CLT:CZ2	3:B:414:CLT:CD	2.41	0.94
1:B:342:ARG:HH11	1:B:342:ARG:HG2	1.43	0.82
1:B:120:ARG:HD3	1:B:152:LEU:HD11	1.63	0.79
1:A:78:GLU:HG2	1:A:307:SER:HB2	1.66	0.76
1:B:33:ILE:HG22	1:B:35:LEU:HD13	1.68	0.75
1:A:9:LEU:HB3	1:B:282:LEU:HD22	1.74	0.70
1:A:212:LEU:HD13	1:A:219:PRO:HG3	1.72	0.69
1:B:373:ILE:HG22	1:B:379:ILE:HG23	1.72	0.69
1:B:372:ARG:O	1:B:376:GLU:HG2	1.95	0.66
1:B:408:GLY:O	1:B:409:VAL:HG22	1.97	0.65
1:B:368:GLU:O	1:B:372:ARG:HG3	1.97	0.65
1:B:103:LEU:HG	1:B:287:MET:HB3	1.79	0.64
1:B:267:THR:HG21	1:B:302:GLY:HA3	1.80	0.64
1:A:9:LEU:HD13	1:B:122:ALA:HB2	1.80	0.62
1:B:371:LYS:HD3	1:B:374:LYS:HD3	1.81	0.62
1:A:18:LEU:HD13	1:A:19:ALA:H	1.65	0.61
1:B:373:ILE:HA	1:B:377:PHE:HD2	1.67	0.60
1:A:137:ASP:HB2	1:A:157:THR:CG2	2.33	0.58
1:B:231:GLY:HA2	1:B:327:ARG:NH1	2.18	0.58
1:A:284:GLN:HA	1:A:287:MET:HE2	1.84	0.58
1:B:404:ILE:HB	1:B:409:VAL:HG11	1.85	0.58
1:A:292:ARG:HA	1:A:296:SER:HA	1.86	0.57
1:B:166:ARG:HH21	1:B:364:GLY:HA3	1.70	0.56
1:B:369:GLN:NE2	1:B:408:GLY:HA3	2.20	0.56
1:B:366:THR:HB	1:B:367:PRO:HD2	1.88	0.55
1:A:47:THR:HG21	1:B:69:THR:HG23	1.89	0.55
1:B:350:PHE:HZ	1:B:409:VAL:HG23	1.71	0.55
1:B:369:GLN:HE22	1:B:408:GLY:HA3	1.73	0.54
1:A:114:GLN:HE21	1:A:114:GLN:HA	1.73	0.54
1:B:196:THR:HG22	1:B:362:ARG:HD3	1.90	0.53
1:B:292:ARG:HA	1:B:296:SER:HA	1.90	0.53
1:A:311:THR:O	1:A:313:PRO:HD3	2.09	0.52
1:B:341:LEU:HD11	1:B:404:ILE:HD11	1.91	0.52
1:B:374:LYS:HB3	4:B:487:HOH:O	2.10	0.52
1:A:126:LEU:HD11	1:A:185:MET:HB2	1.92	0.52
1:B:35:LEU:HD22	1:B:379:ILE:HD11	1.92	0.52
1:A:256:CYS:O	1:A:260:PHE:HB2	2.10	0.52
1:B:324:GLU:HA	1:B:327:ARG:HE	1.73	0.52
1:B:337:LEU:HD23	1:B:397:ILE:HG23	1.92	0.52
1:B:212:LEU:HD13	1:B:219:PRO:HG3	1.92	0.51

*Continued on next page...*



*Continued from previous page...*

Atom-1	Atom-2	Interatomic distance (Å)	Clash overlap (Å)
1:A:110:GLY:O	1:A:114:GLN:HG2	2.11	0.50
4:A:539:HOH:O	1:B:264:ARG:HD2	2.11	0.50
1:A:101:ALA:HB3	1:A:272:ALA:HB3	1.93	0.50
1:B:24:PHE:CE1	1:B:32:LYS:HB3	2.46	0.49
1:B:402:ARG:O	1:B:406:GLU:HG2	2.12	0.49
1:A:263:TYR:HB2	1:B:68:LYS:O	2.12	0.49
1:B:368:GLU:HG3	1:B:369:GLN:N	2.27	0.49
1:B:227:GLY:O	1:B:327:ARG:NH1	2.45	0.49
1:B:101:ALA:HB3	1:B:272:ALA:HB3	1.94	0.48
1:B:393:ASN:O	1:B:397:ILE:HG13	2.14	0.48
1:A:129:ARG:HA	1:A:154:PRO:HG2	1.96	0.48
1:B:337:LEU:HD12	1:B:353:VAL:HG11	1.95	0.47
1:A:249:GLU:HA	1:A:273:LEU:O	2.15	0.47
1:B:182:LYS:HG2	1:B:216:GLY:HA3	1.96	0.46
1:B:53:VAL:HG13	1:B:305:ILE:HG21	1.97	0.46
1:B:102:THR:HG23	1:B:271:LEU:HD23	1.97	0.46
1:B:143:HIS:CD2	1:B:187:LEU:HD21	2.51	0.46
1:B:392:LEU:HD21	1:B:400:LEU:HD23	1.98	0.46
1:A:117:GLU:O	1:A:121:MET:HG3	2.15	0.46
1:B:316:ARG:O	1:B:320:MET:HG3	2.16	0.46
1:B:374:LYS:HE2	1:B:380:TYR:CD1	2.51	0.45
1:B:334:ARG:CZ	1:B:389:ILE:HD12	2.47	0.45
1:B:209:ALA:HB1	1:B:246:ARG:HD3	1.99	0.45
1:A:234:GLU:HB3	4:A:488:HOH:O	2.17	0.44
1:A:328:SER:O	1:A:332:ARG:HG3	2.17	0.44
1:B:73:LEU:HD21	1:B:292:ARG:HB2	1.99	0.44
1:B:392:LEU:HD21	1:B:400:LEU:CD2	2.47	0.44
1:B:123:ASN:O	1:B:126:LEU:HD12	2.18	0.44
1:A:114:GLN:HA	1:A:114:GLN:NE2	2.33	0.43
1:B:330:MET:HE1	1:B:359:MET:HA	1.99	0.43
1:A:407:VAL:HG12	1:A:407:VAL:O	2.18	0.43
1:B:312:THR:HB	1:B:315:LEU:HB2	2.00	0.43
1:B:324:GLU:CA	1:B:327:ARG:HH21	2.32	0.43
1:A:6:LEU:O	1:A:9:LEU:HB2	2.19	0.42
1:A:283:ALA:O	1:A:287:MET:HG3	2.19	0.42
1:B:342:ARG:HH11	1:B:342:ARG:CG	2.22	0.42
1:B:38:GLY:HA3	1:B:360:PHE:HZ	1.84	0.42
1:A:27:ASP:HB3	1:A:32:LYS:HD3	2.01	0.42
1:B:182:LYS:HD3	1:B:183:GLY:N	2.34	0.42
1:B:214:LYS:HB3	1:B:214:LYS:HE2	1.82	0.42
1:B:54:HIS:O	1:B:58:GLN:HG3	2.20	0.41

*Continued on next page...*

Continued from previous page...

Atom-1	Atom-2	Interatomic distance (Å)	Clash overlap (Å)
1:B:117:GLU:O	1:B:121:MET:HG3	2.20	0.41
1:B:342:ARG:HG2	1:B:342:ARG:NH1	2.21	0.41
1:B:76:GLU:HA	1:B:77:PRO:HD3	1.93	0.41
1:B:152:LEU:HA	1:B:154:PRO:HD3	1.88	0.41
1:A:259:ASN:HB2	1:A:323:LEU:HD11	2.03	0.41
1:A:368:GLU:HG2	4:A:472:HOH:O	2.21	0.41
1:A:369:GLN:O	1:A:373:ILE:HG13	2.20	0.41
1:B:78:GLU:HG2	4:B:534:HOH:O	2.20	0.41
1:B:373:ILE:O	1:B:377:PHE:HB2	2.21	0.41
1:A:179:ALA:O	1:A:181:LYS:HE2	2.21	0.41
1:B:280:ARG:C	1:B:280:ARG:HD2	2.41	0.41
1:B:374:LYS:HE2	1:B:380:TYR:HD1	1.86	0.41
1:B:305:ILE:O	1:B:309:VAL:HG23	2.21	0.41
1:B:40:TYR:CE1	1:B:326:VAL:HG13	2.57	0.40
1:B:229:GLY:HA2	1:B:357:ARG:HG3	2.03	0.40
1:A:35:LEU:HD12	1:A:35:LEU:HA	1.92	0.40
1:A:379:ILE:HD11	1:A:399:ILE:HG22	2.03	0.40
1:B:249:GLU:HA	1:B:273:LEU:O	2.21	0.40
1:A:120:ARG:NH2	1:A:150:MET:O	2.54	0.40
1:B:138:PRO:HG3	1:B:362:ARG:NH1	2.36	0.40
1:B:324:GLU:HA	1:B:327:ARG:HH21	1.85	0.40

There are no symmetry-related clashes.

## 5.3 Torsion angles [\(i\)](#)

### 5.3.1 Protein backbone [\(i\)](#)

In the following table, the Percentiles column shows the percent Ramachandran outliers of the chain as a percentile score with respect to all X-ray entries followed by that with respect to entries of similar resolution.

The Analysed column shows the number of residues for which the backbone conformation was analysed, and the total number of residues.

Mol	Chain	Analysed	Favoured	Allowed	Outliers	Percentiles	
1	A	392/394 (100%)	380 (97%)	11 (3%)	1 (0%)	41	55
1	B	384/394 (98%)	365 (95%)	18 (5%)	1 (0%)	41	55
All	All	776/788 (98%)	745 (96%)	29 (4%)	2 (0%)	41	55

All (2) Ramachandran outliers are listed below:

Mol	Chain	Res	Type
1	A	296	SER
1	B	383	GLY

### 5.3.2 Protein sidechains [i](#)

In the following table, the Percentiles column shows the percent sidechain outliers of the chain as a percentile score with respect to all X-ray entries followed by that with respect to entries of similar resolution.

The Analysed column shows the number of residues for which the sidechain conformation was analysed, and the total number of residues.

Mol	Chain	Analysed	Rotameric	Outliers	Percentiles	
1	A	308/308 (100%)	290 (94%)	18 (6%)	20	32
1	B	303/308 (98%)	288 (95%)	15 (5%)	24	40
All	All	611/616 (99%)	578 (95%)	33 (5%)	22	36

All (33) residues with a non-rotameric sidechain are listed below:

Mol	Chain	Res	Type
1	A	9	LEU
1	A	18	LEU
1	A	35	LEU
1	A	76	GLU
1	A	114	GLN
1	A	116	LEU
1	A	195	PRO
1	A	270	LEU
1	A	280	ARG
1	A	282	LEU
1	A	290	LEU
1	A	310	LEU
1	A	323	LEU
1	A	333	LEU
1	A	348	ASP
1	A	361	SER
1	A	394	ASP
1	A	400	LEU
1	B	59	ARG
1	B	69	THR
1	B	103	LEU

*Continued on next page...*

*Continued from previous page...*

Mol	Chain	Res	Type
1	B	114	GLN
1	B	126	LEU
1	B	164	GLU
1	B	171	GLU
1	B	250	VAL
1	B	267	THR
1	B	280	ARG
1	B	282	LEU
1	B	290	LEU
1	B	310	LEU
1	B	315	LEU
1	B	331	LEU

Sometimes sidechains can be flipped to improve hydrogen bonding and reduce clashes. All (8) such sidechains are listed below:

Mol	Chain	Res	Type
1	A	12	GLN
1	A	54	HIS
1	A	58	GLN
1	A	114	GLN
1	A	204	GLN
1	A	293	GLN
1	B	8	ASN
1	B	148	ASN

### 5.3.3 RNA [i](#)

There are no RNA molecules in this entry.

### 5.4 Non-standard residues in protein, DNA, RNA chains [i](#)

There are no non-standard protein/DNA/RNA residues in this entry.

### 5.5 Carbohydrates [i](#)

There are no monosaccharides in this entry.

## 5.6 Ligand geometry

3 ligands are modelled in this entry.

In the following table, the Counts columns list the number of bonds (or angles) for which Mogul statistics could be retrieved, the number of bonds (or angles) that are observed in the model and the number of bonds (or angles) that are defined in the Chemical Component Dictionary. The Link column lists molecule types, if any, to which the group is linked. The Z score for a bond length (or angle) is the number of standard deviations the observed value is removed from the expected value. A bond length (or angle) with  $|Z| > 2$  is considered an outlier worth inspection. RMSZ is the root-mean-square of all Z scores of the bond lengths (or angles).

Mol	Type	Chain	Res	Link	Bond lengths			Bond angles		
					Counts	RMSZ	# Z  > 2	Counts	RMSZ	# Z  > 2
2	PLP	B	413	1	15,15,16	2.16	3 (20%)	20,22,23	1.67	3 (15%)
2	PLP	A	413	1	15,15,16	2.88	7 (46%)	20,22,23	2.79	6 (30%)
3	CLT	B	414	-	6,10,12	0.87	0	6,10,14	0.90	0

In the following table, the Chirals column lists the number of chiral outliers, the number of chiral centers analysed, the number of these observed in the model and the number defined in the Chemical Component Dictionary. Similar counts are reported in the Torsion and Rings columns. '-' means no outliers of that kind were identified.

Mol	Type	Chain	Res	Link	Chirals	Torsions	Rings
2	PLP	B	413	1	-	2/6/6/8	0/1/1/1
2	PLP	A	413	1	-	2/6/6/8	0/1/1/1
3	CLT	B	414	-	-	2/4/5/6	-

All (10) bond length outliers are listed below:

Mol	Chain	Res	Type	Atoms	Z	Observed(Å)	Ideal(Å)
2	A	413	PLP	C3-C2	-5.67	1.35	1.40
2	B	413	PLP	C4A-C4	-5.08	1.41	1.51
2	A	413	PLP	C4A-C4	-4.94	1.41	1.51
2	B	413	PLP	C3-C2	-4.92	1.36	1.40
2	A	413	PLP	C2-N1	4.09	1.41	1.33
2	A	413	PLP	O3-C3	3.90	1.46	1.37
2	A	413	PLP	C2A-C2	-3.14	1.45	1.50
2	A	413	PLP	O4P-C5A	-2.85	1.34	1.45
2	B	413	PLP	C5-C4	2.58	1.43	1.40
2	A	413	PLP	P-O4P	-2.02	1.53	1.60

All (9) bond angle outliers are listed below:

Mol	Chain	Res	Type	Atoms	Z	Observed(°)	Ideal(°)
2	A	413	PLP	O4P-C5A-C5	7.71	124.03	109.35
2	A	413	PLP	O2P-P-O4P	-7.30	87.32	106.73
2	B	413	PLP	O4P-C5A-C5	5.39	119.63	109.35
2	A	413	PLP	O3P-P-O1P	3.16	123.05	110.68
2	B	413	PLP	O3P-P-O1P	2.19	119.25	110.68
2	A	413	PLP	O3P-P-O4P	2.11	112.36	106.73
2	A	413	PLP	C5-C6-N1	-2.04	120.41	123.82
2	A	413	PLP	C6-C5-C4	2.04	119.76	118.16
2	B	413	PLP	C5-C6-N1	-2.03	120.44	123.82

There are no chirality outliers.

All (6) torsion outliers are listed below:

Mol	Chain	Res	Type	Atoms
2	A	413	PLP	C4-C5-C5A-O4P
2	A	413	PLP	C6-C5-C5A-O4P
2	B	413	PLP	C4-C5-C5A-O4P
2	B	413	PLP	C6-C5-C5A-O4P
3	B	414	CLT	CB1-CA-CB2-OG2
3	B	414	CLT	CB1-CA-CB2-OG1

There are no ring outliers.

1 monomer is involved in 1 short contact:

Mol	Chain	Res	Type	Clashes	Symm-Clashes
3	B	414	CLT	1	0

## 5.7 Other polymers [i](#)

There are no such residues in this entry.

## 5.8 Polymer linkage issues [i](#)

There are no chain breaks in this entry.

## 6 Fit of model and data

### 6.1 Protein, DNA and RNA chains

EDS was not executed - this section is therefore empty.

### 6.2 Non-standard residues in protein, DNA, RNA chains

EDS was not executed - this section is therefore empty.

### 6.3 Carbohydrates

EDS was not executed - this section is therefore empty.

### 6.4 Ligands

EDS was not executed - this section is therefore empty.

### 6.5 Other polymers

EDS was not executed - this section is therefore empty.