



# Full wwPDB X-ray Structure Validation Report ⓘ

Dec 12, 2023 – 08:37 pm GMT

PDB ID : 4ATF  
Title : Crystal structure of inactivated mutant beta-agarase B in complex with agaro-octaose  
Authors : Bernard, T.; Hehemann, J.H.; Correc, G.; Jam, M.; Michel, G.; Czjzek, M.  
Deposited on : 2012-05-06  
Resolution : 1.90 Å(reported)

This is a Full wwPDB X-ray Structure Validation Report for a publicly released PDB entry.

We welcome your comments at [validation@mail.wwpdb.org](mailto:validation@mail.wwpdb.org)

A user guide is available at

<https://www.wwpdb.org/validation/2017/XrayValidationReportHelp>

with specific help available everywhere you see the ⓘ symbol.

The types of validation reports are described at

<http://www.wwpdb.org/validation/2017/FAQs#types>.

---

The following versions of software and data (see [references ⓘ](#)) were used in the production of this report:

MolProbity : 4.02b-467  
Mogul : 1.8.4, CSD as541be (2020)  
Xtriage (Phenix) : 1.13  
EDS : 2.36  
Percentile statistics : 20191225.v01 (using entries in the PDB archive December 25th 2019)  
Refmac : 5.8.0158  
CCP4 : 7.0.044 (Gargrove)  
Ideal geometry (proteins) : Engh & Huber (2001)  
Ideal geometry (DNA, RNA) : Parkinson et al. (1996)  
Validation Pipeline (wwPDB-VP) : 2.36

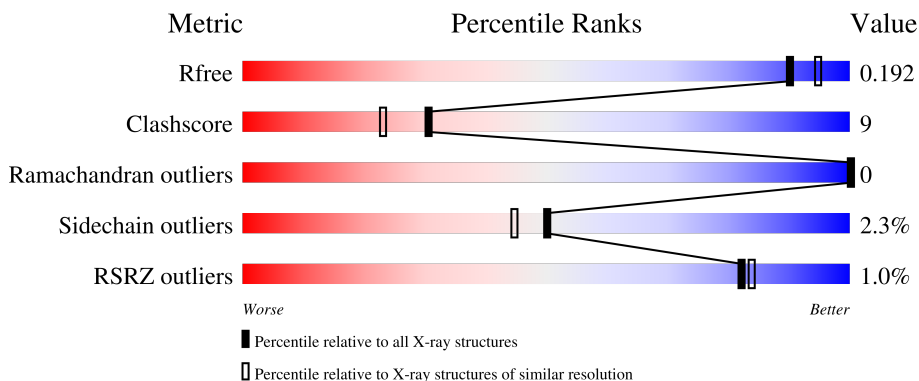
# 1 Overall quality at a glance

The following experimental techniques were used to determine the structure:

*X-RAY DIFFRACTION*

The reported resolution of this entry is 1.90 Å.

Percentile scores (ranging between 0-100) for global validation metrics of the entry are shown in the following graphic. The table shows the number of entries on which the scores are based.




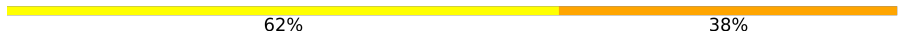

Metric	Whole archive (#Entries)	Similar resolution (#Entries, resolution range(Å))
$R_{free}$	130704	6207 (1.90-1.90)
Clashscore	141614	6847 (1.90-1.90)
Ramachandran outliers	138981	6760 (1.90-1.90)
Sidechain outliers	138945	6760 (1.90-1.90)
RSRZ outliers	127900	6082 (1.90-1.90)

The table below summarises the geometric issues observed across the polymeric chains and their fit to the electron density. The red, orange, yellow and green segments of the lower bar indicate the fraction of residues that contain outliers for  $\geq 3$ , 2, 1 and 0 types of geometric quality criteria respectively. A grey segment represents the fraction of residues that are not modelled. The numeric value for each fraction is indicated below the corresponding segment, with a dot representing fractions  $\leq 5\%$ . The upper red bar (where present) indicates the fraction of residues that have poor fit to the electron density. The numeric value is given above the bar.

Mol	Chain	Length	Quality of chain
1	A	308	 80% 14% ..
1	B	308	 82% 12% ..
1	C	308	 82% 11% ..
1	D	308	 82% 12% ..
2	E	8	 50% 50%

*Continued on next page...*

Continued from previous page...

Mol	Chain	Length	Quality of chain	
2	F	8		
2	G	8		
2	H	8		

The following table lists non-polymeric compounds, carbohydrate monomers and non-standard residues in protein, DNA, RNA chains that are outliers for geometric or electron-density-fit criteria:

Mol	Type	Chain	Res	Chirality	Geometry	Clashes	Electron density
2	GAL	E	1	-	-	X	X
2	AAL	E	2	-	-	-	X
2	GAL	E	3	-	-	-	X
2	AAL	E	4	-	-	-	X
2	GAL	F	1	-	-	-	X
2	AAL	F	2	-	-	-	X
2	GAL	F	3	-	-	-	X
2	AAL	F	4	X	-	-	X
2	GAL	G	1	-	-	-	X
2	AAL	G	2	X	-	-	X
2	GAL	G	3	X	-	-	X
2	AAL	G	4	-	-	X	X
2	GAL	H	1	-	-	X	X
2	AAL	H	2	-	-	-	X
2	GAL	H	3	-	-	-	X
2	AAL	H	4	X	-	X	-

## 2 Entry composition i

There are 4 unique types of molecules in this entry. The entry contains 11129 atoms, of which 0 are hydrogens and 0 are deuteriums.

In the tables below, the ZeroOcc column contains the number of atoms modelled with zero occupancy, the AltConf column contains the number of residues with at least one atom in alternate conformation and the Trace column contains the number of residues modelled with at most 2 atoms.

- Molecule 1 is a protein called BETA-AGARASE B.

Mol	Chain	Residues	Atoms					ZeroOcc	AltConf	Trace
			Total	C	N	O	S			
1	A	295	Total 2482	C 1575	N 413	O 488	S 6	0	9	0
1	B	296	Total 2454	C 1557	N 407	O 484	S 6	0	4	0
1	C	297	Total 2443	C 1553	N 406	O 478	S 6	0	2	0
1	D	297	Total 2461	C 1561	N 412	O 482	S 6	0	4	0

There are 32 discrepancies between the modelled and reference sequences:

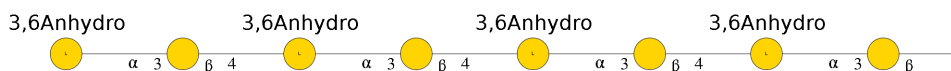
Chain	Residue	Modelled	Actual	Comment	Reference
A	47	HIS	-	expression tag	UNP Q9RGX8
A	48	HIS	-	expression tag	UNP Q9RGX8
A	49	HIS	-	expression tag	UNP Q9RGX8
A	50	HIS	-	expression tag	UNP Q9RGX8
A	51	HIS	-	expression tag	UNP Q9RGX8
A	52	HIS	-	expression tag	UNP Q9RGX8
A	189	ASP	GLU	engineered mutation	UNP Q9RGX8
A	354	LEU	-	expression tag	UNP Q9RGX8
B	47	HIS	-	expression tag	UNP Q9RGX8
B	48	HIS	-	expression tag	UNP Q9RGX8
B	49	HIS	-	expression tag	UNP Q9RGX8
B	50	HIS	-	expression tag	UNP Q9RGX8
B	51	HIS	-	expression tag	UNP Q9RGX8
B	52	HIS	-	expression tag	UNP Q9RGX8
B	189	ASP	GLU	engineered mutation	UNP Q9RGX8
B	354	LEU	-	expression tag	UNP Q9RGX8
C	47	HIS	-	expression tag	UNP Q9RGX8
C	48	HIS	-	expression tag	UNP Q9RGX8
C	49	HIS	-	expression tag	UNP Q9RGX8
C	50	HIS	-	expression tag	UNP Q9RGX8
C	51	HIS	-	expression tag	UNP Q9RGX8

*Continued on next page...*

Continued from previous page...

Chain	Residue	Modelled	Actual	Comment	Reference
C	52	HIS	-	expression tag	UNP Q9RGX8
C	189	ASP	GLU	engineered mutation	UNP Q9RGX8
C	354	LEU	-	expression tag	UNP Q9RGX8
D	47	HIS	-	expression tag	UNP Q9RGX8
D	48	HIS	-	expression tag	UNP Q9RGX8
D	49	HIS	-	expression tag	UNP Q9RGX8
D	50	HIS	-	expression tag	UNP Q9RGX8
D	51	HIS	-	expression tag	UNP Q9RGX8
D	52	HIS	-	expression tag	UNP Q9RGX8
D	189	ASP	GLU	engineered mutation	UNP Q9RGX8
D	354	LEU	-	expression tag	UNP Q9RGX8

- Molecule 2 is an oligosaccharide called 3,6-anhydro-alpha-L-galactopyranose-(1-3)-beta-D-galactopyranose-(1-4)-3,6-anhydro-alpha-L-galactopyranose-(1-3)-beta-D-galactopyranose-(1-4)-3,6-anhydro-alpha-L-galactopyranose-(1-3)-beta-D-galactopyranose-(1-4)-3,6-anhydro-alpha-L-galactopyranose-(1-3)-beta-D-galactopyranose.



Mol	Chain	Residues	Atoms			ZeroOcc	AltConf	Trace
			Total	C	O			
2	E	8	85	48	37	0	0	0
2	F	8	85	48	37	0	0	0
2	G	8	85	48	37	0	0	0
2	H	8	85	48	37	0	0	0

- Molecule 3 is SODIUM ION (three-letter code: NA) (formula: Na).

Mol	Chain	Residues	Atoms		ZeroOcc	AltConf
			Total	Na		
3	A	1	1	1	0	0
3	B	1	1	1	0	0
3	C	1	1	1	0	0
3	D	1	1	1	0	0

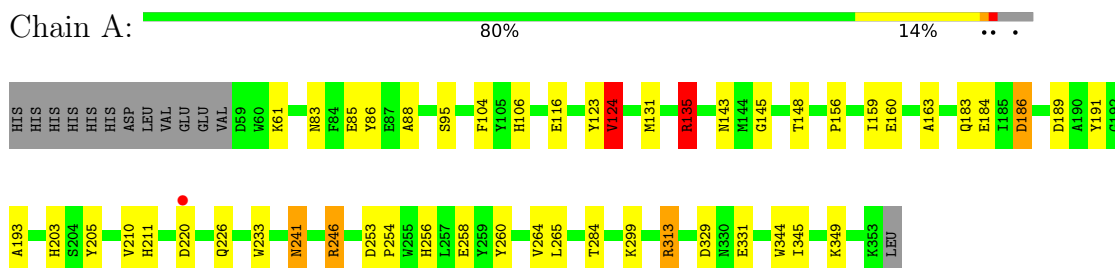
- Molecule 4 is water.

Mol	Chain	Residues	Atoms		ZeroOcc	AltConf
4	A	243	Total 243	O 243	0	0
4	B	250	Total 250	O 250	0	0
4	C	225	Total 225	O 225	0	0
4	D	227	Total 227	O 227	0	0

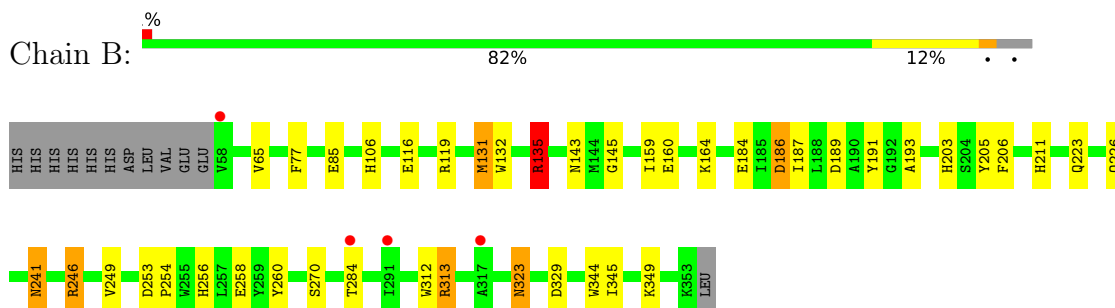
### 3 Residue-property plots

These plots are drawn for all protein, RNA, DNA and oligosaccharide chains in the entry. The first graphic for a chain summarises the proportions of the various outlier classes displayed in the second graphic. The second graphic shows the sequence view annotated by issues in geometry and electron density. Residues are color-coded according to the number of geometric quality criteria for which they contain at least one outlier: green = 0, yellow = 1, orange = 2 and red = 3 or more. A red dot above a residue indicates a poor fit to the electron density ( $RSRZ > 2$ ). Stretches of 2 or more consecutive residues without any outlier are shown as a green connector. Residues present in the sample, but not in the model, are shown in grey.

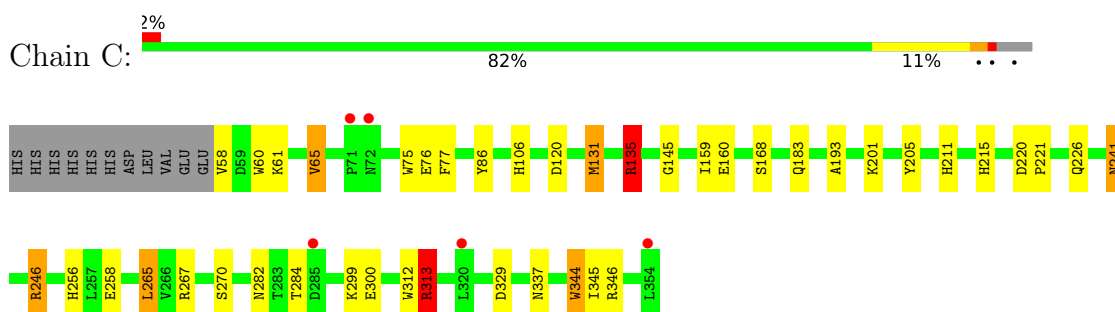
- Molecule 1: BETA-AGARASE B



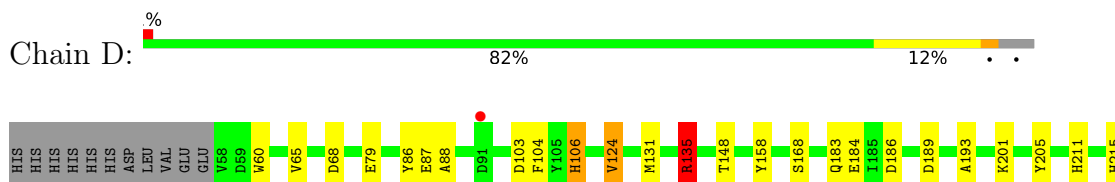
- Molecule 1: BETA-AGARASE B

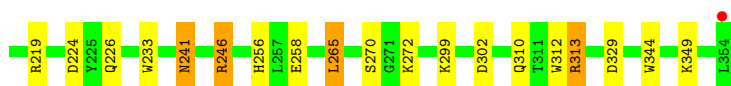


- Molecule 1: BETA-AGARASE B



- Molecule 1: BETA-AGARASE B





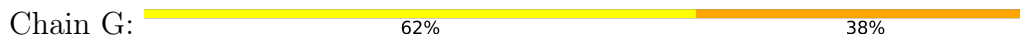
- Molecule 2: 3,6-anhydro-alpha-L-galactopyranose-(1-3)-beta-D-galactopyranose-(1-4)-3,6-anhydro-alpha-L-galactopyranose-(1-3)-beta-D-galactopyranose-(1-4)-3,6-anhydro-alpha-L-galactopyranose-(1-3)-beta-D-galactopyranose



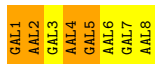
- Molecule 2: 3,6-anhydro-alpha-L-galactopyranose-(1-3)-beta-D-galactopyranose-(1-4)-3,6-anhydro-alpha-L-galactopyranose-(1-3)-beta-D-galactopyranose-(1-4)-3,6-anhydro-alpha-L-galactopyranose-(1-3)-beta-D-galactopyranose



- Molecule 2: 3,6-anhydro-alpha-L-galactopyranose-(1-3)-beta-D-galactopyranose-(1-4)-3,6-anhydro-alpha-L-galactopyranose-(1-3)-beta-D-galactopyranose-(1-4)-3,6-anhydro-alpha-L-galactopyranose-(1-3)-beta-D-galactopyranose



- Molecule 2: 3,6-anhydro-alpha-L-galactopyranose-(1-3)-beta-D-galactopyranose-(1-4)-3,6-anhydro-alpha-L-galactopyranose-(1-3)-beta-D-galactopyranose-(1-4)-3,6-anhydro-alpha-L-galactopyranose-(1-3)-beta-D-galactopyranose





## 4 Data and refinement statistics

Property	Value	Source
Space group	P 1 21 1	Depositor
Cell constants a, b, c, $\alpha$ , $\beta$ , $\gamma$	73.19Å 106.23Å 96.98Å 90.00° 93.22° 90.00°	Depositor
Resolution (Å)	65.35 – 1.90 20.03 – 1.90	Depositor EDS
% Data completeness (in resolution range)	97.3 (65.35-1.90) 97.2 (20.03-1.90)	Depositor EDS
$R_{merge}$	0.09	Depositor
$R_{sym}$	(Not available)	Depositor
$\langle I/\sigma(I) \rangle$ <sup>1</sup>	3.11 (at 1.90Å)	Xtrriage
Refinement program	REFMAC 5.5.0109	Depositor
R, $R_{free}$	0.134 , 0.190 0.138 , 0.192	Depositor DCC
$R_{free}$ test set	5657 reflections (5.00%)	wwPDB-VP
Wilson B-factor (Å <sup>2</sup> )	14.2	Xtrriage
Anisotropy	0.053	Xtrriage
Bulk solvent $k_{sol}$ (e/Å <sup>3</sup> ), $B_{sol}$ (Å <sup>2</sup> )	0.38 , 56.4	EDS
L-test for twinning <sup>2</sup>	$\langle  L  \rangle = 0.49$ , $\langle L^2 \rangle = 0.33$	Xtrriage
Estimated twinning fraction	No twinning to report.	Xtrriage
$F_o, F_c$ correlation	0.97	EDS
Total number of atoms	11129	wwPDB-VP
Average B, all atoms (Å <sup>2</sup> )	18.0	wwPDB-VP

Xtrriage's analysis on translational NCS is as follows: *The analyses of the Patterson function reveals a significant off-origin peak that is 72.88 % of the origin peak, indicating pseudo-translational symmetry. The chance of finding a peak of this or larger height randomly in a structure without pseudo-translational symmetry is equal to 2.0333e-06. The detected translational NCS is most likely also responsible for the elevated intensity ratio.*

<sup>1</sup>Intensities estimated from amplitudes.

<sup>2</sup>Theoretical values of  $\langle |L| \rangle$ ,  $\langle L^2 \rangle$  for acentric reflections are 0.5, 0.333 respectively for untwinned datasets, and 0.375, 0.2 for perfectly twinned datasets.

## 5 Model quality i

### 5.1 Standard geometry i

Bond lengths and bond angles in the following residue types are not validated in this section: GAL, AAL, NA

The Z score for a bond length (or angle) is the number of standard deviations the observed value is removed from the expected value. A bond length (or angle) with  $|Z| > 5$  is considered an outlier worth inspection. RMSZ is the root-mean-square of all Z scores of the bond lengths (or angles).

Mol	Chain	Bond lengths		Bond angles	
		RMSZ	# Z  >5	RMSZ	# Z  >5
1	A	1.28	8/2557 (0.3%)	1.28	12/3484 (0.3%)
1	B	1.28	7/2528 (0.3%)	1.20	15/3442 (0.4%)
1	C	1.28	10/2517 (0.4%)	1.30	14/3428 (0.4%)
1	D	1.24	4/2537 (0.2%)	1.34	17/3454 (0.5%)
All	All	1.27	29/10139 (0.3%)	1.28	58/13808 (0.4%)

Chiral center outliers are detected by calculating the chiral volume of a chiral center and verifying if the center is modelled as a planar moiety or with the opposite hand. A planarity outlier is detected by checking planarity of atoms in a peptide group, atoms in a mainchain group or atoms of a sidechain that are expected to be planar.

Mol	Chain	#Chirality outliers	#Planarity outliers
1	C	0	1

All (29) bond length outliers are listed below:

Mol	Chain	Res	Type	Atoms	Z	Observed(Å)	Ideal(Å)
1	D	131	MET	CB-CG	-8.12	1.25	1.51
1	C	86	TYR	CD1-CE1	7.11	1.50	1.39
1	B	77	PHE	CE2-CZ	6.82	1.50	1.37
1	B	131	MET	CB-CG	-6.67	1.30	1.51
1	C	313	ARG	CD-NE	-6.48	1.35	1.46
1	A	313	ARG	CD-NE	-6.45	1.35	1.46
1	A	264	VAL	CB-CG2	-6.14	1.40	1.52
1	C	300	GLU	CB-CG	-6.12	1.40	1.52
1	C	86	TYR	CD2-CE2	5.95	1.48	1.39
1	B	132	TRP	CB-CG	5.92	1.60	1.50
1	C	131	MET	CB-CG	-5.92	1.32	1.51
1	B	313	ARG	CD-NE	-5.81	1.36	1.46
1	B	312	TRP	CB-CG	5.79	1.60	1.50
1	C	246	ARG	CD-NE	-5.79	1.36	1.46

*Continued on next page...*

*Continued from previous page...*

Mol	Chain	Res	Type	Atoms	Z	Observed(Å)	Ideal(Å)
1	C	65[A]	VAL	CB-CG2	-5.73	1.40	1.52
1	C	65[B]	VAL	CB-CG2	-5.73	1.40	1.52
1	A	331	GLU	CB-CG	5.70	1.62	1.52
1	A	246	ARG	CD-NE	-5.53	1.37	1.46
1	D	313	ARG	CD-NE	-5.51	1.37	1.46
1	A	123	TYR	CD2-CE2	5.39	1.47	1.39
1	B	260	TYR	CE1-CZ	5.36	1.45	1.38
1	A	123	TYR	CD1-CE1	5.34	1.47	1.39
1	B	135	ARG	CD-NE	-5.23	1.37	1.46
1	C	312	TRP	CB-CG	5.15	1.59	1.50
1	D	158	TYR	CE2-CZ	5.15	1.45	1.38
1	A	260	TYR	CD1-CE1	5.12	1.47	1.39
1	C	344	TRP	CB-CG	5.11	1.59	1.50
1	D	79	GLU	CG-CD	5.05	1.59	1.51
1	A	163	ALA	CA-CB	5.03	1.63	1.52

All (58) bond angle outliers are listed below:

Mol	Chain	Res	Type	Atoms	Z	Observed(°)	Ideal(°)
1	C	313	ARG	NE-CZ-NH1	-34.86	102.87	120.30
1	D	313	ARG	NE-CZ-NH1	-31.08	104.76	120.30
1	A	313	ARG	NE-CZ-NH1	-28.68	105.96	120.30
1	B	313	ARG	NE-CZ-NH2	-23.66	108.47	120.30
1	D	246	ARG	NE-CZ-NH2	-22.65	108.98	120.30
1	A	313	ARG	NE-CZ-NH2	21.59	131.09	120.30
1	A	246	ARG	NE-CZ-NH2	-20.64	109.98	120.30
1	D	313	ARG	NE-CZ-NH2	20.60	130.60	120.30
1	D	246	ARG	NE-CZ-NH1	19.82	130.21	120.30
1	B	135	ARG	NE-CZ-NH2	-19.63	110.48	120.30
1	C	313	ARG	NE-CZ-NH2	19.45	130.02	120.30
1	D	135	ARG	NE-CZ-NH2	-19.22	110.69	120.30
1	B	313	ARG	NE-CZ-NH1	17.45	129.02	120.30
1	C	135	ARG	NE-CZ-NH1	17.04	128.82	120.30
1	A	135	ARG	NE-CZ-NH2	-16.34	112.13	120.30
1	C	246	ARG	NE-CZ-NH2	-16.32	112.14	120.30
1	D	135	ARG	NE-CZ-NH1	15.91	128.25	120.30
1	B	246	ARG	NE-CZ-NH2	-15.72	112.44	120.30
1	A	135	ARG	NE-CZ-NH1	15.48	128.04	120.30
1	A	246	ARG	NE-CZ-NH1	15.16	127.88	120.30
1	C	135	ARG	NE-CZ-NH2	-15.08	112.76	120.30
1	B	135	ARG	NE-CZ-NH1	14.25	127.42	120.30
1	C	246	ARG	NE-CZ-NH1	14.11	127.36	120.30

*Continued on next page...*

Continued from previous page...

Mol	Chain	Res	Type	Atoms	Z	Observed(°)	Ideal(°)
1	C	313	ARG	CD-NE-CZ	13.52	142.52	123.60
1	B	246	ARG	NE-CZ-NH1	13.48	127.04	120.30
1	D	313	ARG	CG-CD-NE	-9.40	92.06	111.80
1	D	313	ARG	CD-NE-CZ	9.13	136.38	123.60
1	A	313	ARG	CG-CD-NE	-9.12	92.65	111.80
1	A	186	ASP	CB-CG-OD2	-8.98	110.22	118.30
1	A	313	ARG	CD-NE-CZ	8.89	136.05	123.60
1	B	313	ARG	CG-CD-NE	-7.88	95.26	111.80
1	D	219	ARG	NE-CZ-NH1	7.19	123.90	120.30
1	B	313	ARG	CD-NE-CZ	7.11	133.56	123.60
1	A	189	ASP	CB-CG-OD1	7.02	124.62	118.30
1	D	65	VAL	CG1-CB-CG2	6.91	121.96	110.90
1	C	267	ARG	NE-CZ-NH1	6.89	123.75	120.30
1	C	131	MET	CG-SD-CE	-6.78	89.35	100.20
1	D	124	VAL	CG1-CB-CG2	6.73	121.67	110.90
1	C	313	ARG	CG-CD-NE	-6.45	98.25	111.80
1	D	68	ASP	CB-CG-OD1	6.42	124.08	118.30
1	B	164	LYS	CD-CE-NZ	-6.35	97.10	111.70
1	C	135	ARG	CD-NE-CZ	6.05	132.07	123.60
1	D	265	LEU	CB-CG-CD2	6.04	121.26	111.00
1	B	65	VAL	CG1-CB-CG2	5.97	120.45	110.90
1	B	186	ASP	CB-CG-OD1	5.94	123.64	118.30
1	B	186	ASP	CB-CG-OD2	-5.77	113.11	118.30
1	A	186	ASP	CB-CG-OD1	5.75	123.47	118.30
1	D	246	ARG	CD-NE-CZ	5.49	131.28	123.60
1	B	119	ARG	NE-CZ-NH2	-5.46	117.57	120.30
1	D	103	ASP	CB-CG-OD1	5.42	123.18	118.30
1	C	346	ARG	NE-CZ-NH1	5.33	122.96	120.30
1	C	265	LEU	CB-CG-CD2	5.29	120.00	111.00
1	D	68	ASP	CB-CG-OD2	-5.29	113.54	118.30
1	D	135	ARG	CD-NE-CZ	5.26	130.96	123.60
1	B	349	LYS	CD-CE-NZ	-5.19	99.76	111.70
1	B	135	ARG	CD-NE-CZ	5.18	130.85	123.60
1	A	124	VAL	CG1-CB-CG2	5.15	119.14	110.90
1	C	120	ASP	CB-CG-OD1	5.10	122.89	118.30

There are no chirality outliers.

All (1) planarity outliers are listed below:

Mol	Chain	Res	Type	Group
1	C	313	ARG	Sidechain

## 5.2 Too-close contacts

In the following table, the Non-H and H(model) columns list the number of non-hydrogen atoms and hydrogen atoms in the chain respectively. The H(added) column lists the number of hydrogen atoms added and optimized by MolProbity. The Clashes column lists the number of clashes within the asymmetric unit, whereas Symm-Clashes lists symmetry-related clashes.

Mol	Chain	Non-H	H(model)	H(added)	Clashes	Symm-Clashes
1	A	2482	0	2303	53	0
1	B	2454	0	2276	30	0
1	C	2443	0	2281	40	0
1	D	2461	0	2284	43	0
2	E	85	0	66	21	0
2	F	85	0	67	7	0
2	G	85	0	67	21	0
2	H	85	0	66	29	0
3	A	1	0	0	0	0
3	B	1	0	0	0	0
3	C	1	0	0	0	0
3	D	1	0	0	0	0
4	A	243	0	0	8	0
4	B	250	0	0	5	0
4	C	225	0	0	6	0
4	D	227	0	0	6	0
All	All	11129	0	9410	180	0

The all-atom clashscore is defined as the number of clashes found per 1000 atoms (including hydrogen atoms). The all-atom clashscore for this structure is 9.

All (180) close contacts within the same asymmetric unit are listed below, sorted by their clash magnitude.

Atom-1	Atom-2	Interatomic distance (Å)	Clash overlap (Å)
1:C:215:HIS:NE2	2:G:4:AAL:H4	1.50	1.24
1:A:205:TYR:CE2	2:E:1:GAL:H3	1.75	1.20
1:D:189:ASP:OD2	2:H:4:AAL:H3	1.45	1.17
4:C:2123:HOH:O	2:G:4:AAL:H62	0.96	1.12
2:H:4:AAL:H5	2:H:5:GAL:H2	1.37	1.05
1:A:284:THR:HG23	4:A:2205:HOH:O	1.58	1.03
4:B:2122:HOH:O	2:F:4:AAL:H4	1.58	1.02
1:B:323:ASN:HB2	4:B:2235:HOH:O	1.60	0.99
1:C:211:HIS:HE1	2:G:4:AAL:O2	1.46	0.98
1:D:205:TYR:CE2	2:H:1:GAL:H3	2.01	0.95
1:D:87:GLU:OE2	4:D:2032:HOH:O	1.83	0.94

*Continued on next page...*

*Continued from previous page...*

Atom-1	Atom-2	Interatomic distance (Å)	Clash overlap (Å)
1:C:211:HIS:CE1	2:G:4:AAL:O2	2.21	0.93
1:C:65[A]:VAL:HG21	1:C:75:TRP:CD1	2.02	0.92
1:C:226:GLN:NE2	2:G:4:AAL:O2	2.02	0.91
1:A:205:TYR:CZ	2:E:1:GAL:H3	2.05	0.90
2:H:4:AAL:C5	2:H:5:GAL:H2	2.02	0.90
4:C:2123:HOH:O	2:G:4:AAL:C6	1.66	0.90
1:A:205:TYR:CE1	2:E:1:GAL:H1	2.07	0.88
1:C:211:HIS:CE1	2:G:4:AAL:C2	2.58	0.86
1:A:205:TYR:CE2	2:E:1:GAL:C3	2.58	0.85
1:D:205:TYR:CG	2:H:1:GAL:H5	2.11	0.85
1:A:205:TYR:CG	2:E:1:GAL:H5	2.10	0.85
1:A:211:HIS:CE1	2:E:4:AAL:O2	2.30	0.84
1:D:211:HIS:CE1	2:H:4:AAL:H2	2.12	0.84
1:A:205:TYR:CZ	2:E:1:GAL:H1	2.12	0.84
1:C:215:HIS:NE2	2:G:4:AAL:C4	2.39	0.83
1:C:58:VAL:N	4:C:2001:HOH:O	2.15	0.79
4:D:2204:HOH:O	2:H:4:AAL:H61	1.81	0.78
1:D:104:PHE:O	1:D:148[B]:THR:HG22	1.83	0.78
1:B:323:ASN:CB	4:B:2235:HOH:O	2.25	0.78
1:A:210[B]:VAL:HG12	4:A:2121:HOH:O	1.83	0.77
1:D:349:LYS:HE2	4:D:2103:HOH:O	1.83	0.77
1:A:135:ARG:HD2	1:A:329:ASP:OD1	1.85	0.77
1:B:184[A]:GLU:OE2	2:F:5:GAL:C1	2.33	0.77
1:C:211:HIS:CE1	2:G:4:AAL:H2	2.19	0.75
1:C:211:HIS:HE1	2:G:4:AAL:C2	1.98	0.75
1:A:85:GLU:OE2	4:A:2024:HOH:O	2.05	0.75
2:H:4:AAL:H5	2:H:5:GAL:C2	2.17	0.74
4:C:2122:HOH:O	2:G:4:AAL:H2	1.88	0.74
1:A:184[B]:GLU:OE2	1:A:186:ASP:OD1	2.06	0.74
1:D:211:HIS:ND1	2:H:4:AAL:H2	2.03	0.74
1:C:183:GLN:HE22	1:C:299:LYS:H	1.34	0.74
1:A:159[B]:ILE:HD11	1:A:345:ILE:HD11	1.70	0.73
1:D:205:TYR:CD2	2:H:1:GAL:H4	2.23	0.73
1:D:205:TYR:CD2	2:H:1:GAL:H5	2.24	0.72
1:D:215:HIS:HD2	1:D:224:ASP:OD1	1.72	0.72
1:D:205:TYR:CE2	2:H:1:GAL:C3	2.73	0.71
1:B:135:ARG:HD2	1:B:329:ASP:OD1	1.90	0.71
1:C:65[A]:VAL:CG2	1:C:75:TRP:CD1	2.74	0.71
1:D:189:ASP:OD2	2:H:4:AAL:C3	2.32	0.71
1:A:241:ASN:HD22	1:A:241:ASN:C	1.95	0.70
1:A:205:TYR:CD1	2:E:1:GAL:H5	2.27	0.70

*Continued on next page...*

*Continued from previous page...*

Atom-1	Atom-2	Interatomic distance (Å)	Clash overlap (Å)
1:D:205:TYR:CZ	2:H:1:GAL:H1	2.28	0.68
1:D:205:TYR:CE1	2:H:1:GAL:H1	2.27	0.68
1:D:88:ALA:HB3	1:D:124:VAL:HG13	1.73	0.68
4:A:2120:HOH:O	2:E:4:AAL:C4	2.40	0.68
1:D:205:TYR:CZ	2:H:1:GAL:H3	2.29	0.67
2:H:4:AAL:C5	2:H:5:GAL:C2	2.73	0.66
2:G:4:AAL:H5	2:G:5:GAL:H2	1.77	0.66
1:A:205:TYR:CD2	2:E:1:GAL:H4	2.30	0.66
1:A:183:GLN:HE22	1:A:299:LYS:H	1.44	0.65
1:B:205:TYR:CZ	2:F:1:GAL:H1	2.31	0.65
1:A:211:HIS:CE1	1:A:226:GLN:HE22	2.15	0.65
1:B:184[B]:GLU:OE2	1:B:186:ASP:OD1	2.15	0.64
1:A:210[B]:VAL:CG1	4:A:2121:HOH:O	2.44	0.63
1:B:160:GLU:OE1	1:B:246:ARG:HD2	1.99	0.63
1:D:241:ASN:C	1:D:241:ASN:HD22	2.02	0.63
1:A:211:HIS:HE1	2:E:4:AAL:O2	1.82	0.62
1:C:256:HIS:HE1	1:C:258:GLU:OE2	1.84	0.61
1:C:211:HIS:ND1	2:G:4:AAL:H2	2.16	0.61
1:A:205:TYR:CD2	2:E:1:GAL:H5	2.36	0.61
1:A:203:HIS:CE1	1:A:313:ARG:HH22	2.19	0.61
1:B:189:ASP:OD2	2:F:4:AAL:H3	2.01	0.61
1:B:135:ARG:CD	1:B:329:ASP:OD1	2.48	0.61
1:D:256:HIS:HE1	1:D:258:GLU:OE2	1.85	0.60
1:D:183:GLN:HE22	1:D:299:LYS:H	1.47	0.60
1:C:215:HIS:CD2	2:G:4:AAL:H4	2.33	0.60
1:C:65[A]:VAL:HG21	1:C:75:TRP:CG	2.35	0.60
1:D:205:TYR:CE2	2:H:1:GAL:H4	2.36	0.60
1:A:256:HIS:HE1	1:A:258:GLU:OE2	1.85	0.60
1:C:159[B]:ILE:HD11	1:C:345:ILE:HD11	1.83	0.59
1:C:226:GLN:CD	2:G:4:AAL:HO2	2.04	0.59
1:A:211:HIS:HE1	1:A:226:GLN:HE22	1.48	0.59
1:A:205:TYR:CE2	2:E:1:GAL:C4	2.86	0.59
1:D:135:ARG:HD2	1:D:329:ASP:OD1	2.03	0.59
1:B:323:ASN:CG	4:B:2235:HOH:O	2.42	0.58
1:A:131:MET:HG2	1:A:145:GLY:HA3	1.84	0.58
1:D:205:TYR:CE2	2:H:1:GAL:C4	2.86	0.58
1:D:211:HIS:CE1	1:D:226:GLN:HE22	2.22	0.57
1:A:203:HIS:HE1	1:A:313:ARG:HH22	1.52	0.57
1:A:160:GLU:OE1	1:A:246:ARG:HD2	2.05	0.56
1:B:203:HIS:HE1	1:B:313:ARG:HH12	1.52	0.56
1:D:205:TYR:CD1	2:H:1:GAL:H5	2.40	0.56

*Continued on next page...*

*Continued from previous page...*

Atom-1	Atom-2	Interatomic distance (Å)	Clash overlap (Å)
1:B:159[A]:ILE:HD11	1:B:345:ILE:HD11	1.86	0.56
2:F:4:AAL:C5	2:F:5:GAL:H2	2.36	0.56
1:A:156:PRO:O	1:A:349:LYS:HE3	2.06	0.55
1:D:215:HIS:HE1	2:H:4:AAL:O2	1.89	0.55
1:B:203:HIS:CE1	1:B:313:ARG:HH12	2.23	0.55
1:C:226:GLN:CD	2:G:4:AAL:O2	2.44	0.55
1:B:211:HIS:CE1	1:B:226:GLN:HE22	2.24	0.55
4:D:2128:HOH:O	2:H:4:AAL:C2	2.55	0.55
1:A:184[A]:GLU:OE2	2:E:5:GAL:C1	2.55	0.54
1:A:205:TYR:CZ	2:E:1:GAL:C3	2.86	0.54
1:D:256:HIS:HD2	1:D:270:SER:OG	1.90	0.54
4:D:2128:HOH:O	2:H:4:AAL:C3	2.56	0.54
2:G:4:AAL:C5	2:G:5:GAL:H2	2.38	0.54
1:A:191:TYR:CE2	1:A:313:ARG:HD2	2.43	0.54
1:C:241:ASN:C	1:C:241:ASN:HD22	2.11	0.54
1:A:233:TRP:CZ2	2:E:2:AAL:H5	2.43	0.54
1:B:246:ARG:HD3	1:B:344:TRP:HH2	1.72	0.53
1:B:193:ALA:O	1:B:203:HIS:HD2	1.91	0.53
1:A:88:ALA:HB3	1:A:124:VAL:HG13	1.90	0.53
1:B:211:HIS:HE1	1:B:226:GLN:HE22	1.55	0.53
1:A:135:ARG:CD	1:A:329:ASP:OD1	2.55	0.53
1:B:241:ASN:C	1:B:241:ASN:HD22	2.13	0.53
1:A:61:LYS:HE3	4:A:2003:HOH:O	2.10	0.52
1:B:223:GLN:NE2	1:C:337:ASN:HD21	2.09	0.51
4:A:2098:HOH:O	1:D:272:LYS:HD2	2.09	0.51
1:A:95[B]:SER:OG	1:C:76:GLU:CG	2.58	0.51
1:D:205:TYR:CD2	2:H:1:GAL:C4	2.92	0.51
1:A:284:THR:CG2	4:A:2205:HOH:O	2.33	0.51
1:D:246:ARG:HD3	1:D:344:TRP:CH2	2.46	0.50
1:C:246:ARG:HD3	1:C:344:TRP:CH2	2.46	0.50
1:B:191:TYR:CE2	1:B:313:ARG:HD2	2.46	0.50
1:B:246:ARG:HD3	1:B:344:TRP:CH2	2.47	0.50
1:C:313:ARG:HD3	4:C:2111:HOH:O	2.11	0.49
1:B:256:HIS:HE1	1:B:258:GLU:OE2	1.94	0.49
1:D:205:TYR:CD2	2:H:1:GAL:C5	2.95	0.49
1:D:205:TYR:CB	2:H:1:GAL:O6	2.61	0.48
1:B:85:GLU:OE2	4:B:2025:HOH:O	2.20	0.48
1:A:95[B]:SER:OG	1:C:76:GLU:HG3	2.13	0.48
2:F:4:AAL:H5	2:F:5:GAL:H2	1.94	0.48
1:A:205:TYR:CD2	2:E:1:GAL:C4	2.95	0.47
1:C:160:GLU:OE1	1:C:246:ARG:HD2	2.14	0.47

*Continued on next page...*



*Continued from previous page...*

Atom-1	Atom-2	Interatomic distance (Å)	Clash overlap (Å)
1:D:233:TRP:CZ2	2:H:2:AAL:H5	2.49	0.47
1:A:205:TYR:CE2	2:E:1:GAL:H4	2.47	0.47
1:A:104:PHE:O	1:A:148[B]:THR:HG23	2.15	0.47
1:C:135:ARG:HD2	1:C:329:ASP:OD1	2.13	0.47
1:A:183:GLN:NE2	1:A:299:LYS:H	2.11	0.47
1:C:256:HIS:HD2	1:C:270:SER:OG	1.97	0.47
1:D:106[B]:HIS:HD2	1:D:302:ASP:OD2	1.97	0.47
1:A:193:ALA:O	1:A:203:HIS:HD2	1.98	0.47
1:B:206:PHE:CZ	2:F:1:GAL:H4	2.51	0.47
1:C:282:ASN:HB3	1:C:284:THR:O	2.15	0.46
1:B:256:HIS:HD2	1:B:270:SER:OG	1.99	0.46
1:D:135:ARG:CD	1:D:329:ASP:OD1	2.64	0.46
4:D:2128:HOH:O	2:H:4:AAL:H2	2.15	0.46
1:D:310:GLN:NE2	1:D:312:TRP:HE1	2.14	0.46
1:C:246:ARG:HD3	1:C:344:TRP:HH2	1.81	0.46
1:C:131:MET:HG2	1:C:145:GLY:HA3	1.98	0.45
1:B:131:MET:HG2	1:B:145:GLY:HA3	1.97	0.45
1:A:241:ASN:C	1:A:241:ASN:ND2	2.66	0.45
1:C:205:TYR:CZ	2:G:1:GAL:H5	2.52	0.45
1:A:205:TYR:HE2	2:E:1:GAL:H3	1.62	0.44
1:B:253:ASP:HB2	1:B:254:PRO:CD	2.48	0.44
1:A:95[B]:SER:OG	1:C:76:GLU:HG2	2.17	0.44
1:C:183:GLN:NE2	1:C:299:LYS:H	2.07	0.44
1:D:86:TYR:O	1:D:124:VAL:HG22	2.18	0.44
1:A:86:TYR:O	1:A:124:VAL:HG22	2.18	0.44
1:D:168:SER:C	1:D:193:ALA:HB2	2.39	0.44
2:G:4:AAL:H5	2:G:5:GAL:C2	2.47	0.43
1:D:183:GLN:NE2	1:D:299:LYS:H	2.14	0.43
1:B:191:TYR:CD2	1:B:313:ARG:HD2	2.53	0.43
1:A:116:GLU:O	1:A:143:ASN:HA	2.19	0.43
1:A:253:ASP:HB2	1:A:254:PRO:CD	2.48	0.43
1:D:211:HIS:CE1	2:H:4:AAL:C2	2.93	0.42
1:B:187:ILE:HG12	1:B:249:VAL:CG2	2.49	0.42
1:C:168:SER:C	1:C:193:ALA:HB2	2.39	0.42
1:D:310:GLN:HE21	1:D:312:TRP:HE1	1.66	0.42
1:A:205:TYR:CZ	2:E:1:GAL:C1	2.95	0.42
1:C:61:LYS:HE2	1:C:77:PHE:CZ	2.55	0.42
1:C:226:GLN:NE2	2:G:4:AAL:HO2	2.09	0.42
1:D:241:ASN:C	1:D:241:ASN:ND2	2.72	0.42
1:A:205:TYR:CD2	2:E:1:GAL:C5	3.03	0.41
1:D:184:GLU:OE2	1:D:186:ASP:OD1	2.38	0.41

*Continued on next page...*

*Continued from previous page...*

Atom-1	Atom-2	Interatomic distance (Å)	Clash overlap (Å)
1:C:65[A]:VAL:HG22	4:C:2008:HOH:O	2.20	0.41
1:A:83:ASN:HA	1:A:344:TRP:HB3	2.03	0.40
1:C:205:TYR:CE1	2:G:1:GAL:H1	2.55	0.40
1:B:116:GLU:O	1:B:143:ASN:HA	2.22	0.40
1:C:220:ASP:HA	1:C:221:PRO:HA	1.97	0.40

There are no symmetry-related clashes.

## 5.3 Torsion angles [i](#)

### 5.3.1 Protein backbone [i](#)

In the following table, the Percentiles column shows the percent Ramachandran outliers of the chain as a percentile score with respect to all X-ray entries followed by that with respect to entries of similar resolution.

The Analysed column shows the number of residues for which the backbone conformation was analysed, and the total number of residues.

Mol	Chain	Analysed	Favoured	Allowed	Outliers	Percentiles	
1	A	302/308 (98%)	298 (99%)	4 (1%)	0	100	100
1	B	298/308 (97%)	293 (98%)	5 (2%)	0	100	100
1	C	297/308 (96%)	294 (99%)	3 (1%)	0	100	100
1	D	299/308 (97%)	293 (98%)	6 (2%)	0	100	100
All	All	1196/1232 (97%)	1178 (98%)	18 (2%)	0	100	100

There are no Ramachandran outliers to report.

### 5.3.2 Protein sidechains [i](#)

In the following table, the Percentiles column shows the percent sidechain outliers of the chain as a percentile score with respect to all X-ray entries followed by that with respect to entries of similar resolution.

The Analysed column shows the number of residues for which the sidechain conformation was analysed, and the total number of residues.

Mol	Chain	Analysed	Rotameric	Outliers	Percentiles	
1	A	269/273 (98%)	263 (98%)	6 (2%)	52	47

*Continued on next page...*

*Continued from previous page...*

Mol	Chain	Analysed	Rotameric	Outliers	Percentiles	
1	B	265/273 (97%)	260 (98%)	5 (2%)	57	53
1	C	264/273 (97%)	258 (98%)	6 (2%)	50	45
1	D	266/273 (97%)	258 (97%)	8 (3%)	41	33
All	All	1064/1092 (97%)	1039 (98%)	25 (2%)	50	45

All (25) residues with a non-rotameric sidechain are listed below:

Mol	Chain	Res	Type
1	A	106	HIS
1	A	124	VAL
1	A	135	ARG
1	A	220	ASP
1	A	241	ASN
1	A	265	LEU
1	B	106	HIS
1	B	135	ARG
1	B	241	ASN
1	B	284	THR
1	B	323	ASN
1	C	60	TRP
1	C	106	HIS
1	C	135	ARG
1	C	201	LYS
1	C	241	ASN
1	C	265	LEU
1	D	60	TRP
1	D	106[A]	HIS
1	D	106[B]	HIS
1	D	135	ARG
1	D	201	LYS
1	D	241	ASN
1	D	265	LEU
1	D	313	ARG

Sometimes sidechains can be flipped to improve hydrogen bonding and reduce clashes. All (30) such sidechains are listed below:

Mol	Chain	Res	Type
1	A	92	ASN
1	A	183	GLN
1	A	203	HIS

*Continued on next page...*

*Continued from previous page...*

Mol	Chain	Res	Type
1	A	211	HIS
1	A	223	GLN
1	A	226	GLN
1	A	241	ASN
1	A	256	HIS
1	A	310	GLN
1	B	92	ASN
1	B	203	HIS
1	B	223	GLN
1	B	226	GLN
1	B	241	ASN
1	B	256	HIS
1	B	310	GLN
1	B	323	ASN
1	C	183	GLN
1	C	211	HIS
1	C	226	GLN
1	C	241	ASN
1	C	256	HIS
1	C	310	GLN
1	D	92	ASN
1	D	183	GLN
1	D	215	HIS
1	D	226	GLN
1	D	241	ASN
1	D	256	HIS
1	D	310	GLN

### 5.3.3 RNA [i](#)

There are no RNA molecules in this entry.

### 5.4 Non-standard residues in protein, DNA, RNA chains [i](#)

There are no non-standard protein/DNA/RNA residues in this entry.

### 5.5 Carbohydrates [i](#)

32 monosaccharides are modelled in this entry.

In the following table, the Counts columns list the number of bonds (or angles) for which Mogul statistics could be retrieved, the number of bonds (or angles) that are observed in the model and

the number of bonds (or angles) that are defined in the Chemical Component Dictionary. The Link column lists molecule types, if any, to which the group is linked. The Z score for a bond length (or angle) is the number of standard deviations the observed value is removed from the expected value. A bond length (or angle) with  $|Z| > 2$  is considered an outlier worth inspection. RMSZ is the root-mean-square of all Z scores of the bond lengths (or angles).

Mol	Type	Chain	Res	Link	Bond lengths			Bond angles		
					Counts	RMSZ	# Z  > 2	Counts	RMSZ	# Z  > 2
2	GAL	E	1	2	12,12,12	0.67	0	17,17,17	1.35	2 (11%)
2	AAL	E	2	2	11,11,12	0.89	0	15,16,18	2.95	7 (46%)
2	GAL	E	3	2	11,11,12	1.13	1 (9%)	15,15,17	2.19	6 (40%)
2	AAL	E	4	2	11,11,12	0.99	0	15,16,18	2.74	5 (33%)
2	GAL	E	5	2	11,11,12	0.88	0	15,15,17	2.14	5 (33%)
2	AAL	E	6	2	11,11,12	1.83	2 (18%)	15,16,18	1.71	3 (20%)
2	GAL	E	7	2	11,11,12	1.03	0	15,15,17	2.01	4 (26%)
2	AAL	E	8	2	11,11,12	1.59	2 (18%)	15,16,18	1.83	4 (26%)
2	GAL	F	1	2	12,12,12	0.58	0	17,17,17	2.50	8 (47%)
2	AAL	F	2	2	11,11,12	0.86	0	15,16,18	2.61	8 (53%)
2	GAL	F	3	2	11,11,12	1.01	1 (9%)	15,15,17	2.07	5 (33%)
2	AAL	F	4	2	11,11,12	1.18	1 (9%)	15,16,18	2.65	7 (46%)
2	GAL	F	5	2	11,11,12	1.21	3 (27%)	15,15,17	1.53	2 (13%)
2	AAL	F	6	2	11,11,12	1.75	3 (27%)	15,16,18	1.92	6 (40%)
2	GAL	F	7	2	11,11,12	1.21	2 (18%)	15,15,17	1.64	4 (26%)
2	AAL	F	8	2	11,11,12	1.33	2 (18%)	15,16,18	2.35	6 (40%)
2	GAL	G	1	2	12,12,12	0.57	0	17,17,17	1.33	1 (5%)
2	AAL	G	2	2	11,11,12	1.21	1 (9%)	15,16,18	2.40	4 (26%)
2	GAL	G	3	2	11,11,12	0.96	1 (9%)	15,15,17	2.90	7 (46%)
2	AAL	G	4	2	11,11,12	1.43	2 (18%)	15,16,18	4.36	8 (53%)
2	GAL	G	5	2	11,11,12	0.59	0	15,15,17	1.83	3 (20%)
2	AAL	G	6	2	11,11,12	1.59	3 (27%)	15,16,18	1.48	2 (13%)
2	GAL	G	7	2	11,11,12	1.26	0	15,15,17	1.40	2 (13%)
2	AAL	G	8	2	11,11,12	1.44	2 (18%)	15,16,18	1.49	3 (20%)
2	GAL	H	1	2	12,12,12	0.80	0	17,17,17	1.64	3 (17%)
2	AAL	H	2	2	11,11,12	0.78	0	15,16,18	2.88	7 (46%)
2	GAL	H	3	2	11,11,12	0.64	0	15,15,17	3.78	5 (33%)
2	AAL	H	4	2	11,11,12	1.89	3 (27%)	15,16,18	4.09	9 (60%)
2	GAL	H	5	2	11,11,12	0.82	0	15,15,17	1.39	2 (13%)
2	AAL	H	6	2	11,11,12	1.42	2 (18%)	15,16,18	1.65	4 (26%)

Mol	Type	Chain	Res	Link	Bond lengths			Bond angles		
					Counts	RMSZ	# Z  > 2	Counts	RMSZ	# Z  > 2
2	GAL	H	7	2	11,11,12	1.30	3 (27%)	15,15,17	1.51	1 (6%)
2	AAL	H	8	2	11,11,12	1.46	2 (18%)	15,16,18	1.69	4 (26%)

In the following table, the Chirals column lists the number of chiral outliers, the number of chiral centers analysed, the number of these observed in the model and the number defined in the Chemical Component Dictionary. Similar counts are reported in the Torsion and Rings columns. '-' means no outliers of that kind were identified.

Mol	Type	Chain	Res	Link	Chirals	Torsions	Rings
2	GAL	E	1	2	-	0/2/22/22	0/1/1/1
2	AAL	E	2	2	-	-	0/3/2/2
2	GAL	E	3	2	-	2/2/19/22	0/1/1/1
2	AAL	E	4	2	-	-	0/3/2/2
2	GAL	E	5	2	-	0/2/19/22	0/1/1/1
2	AAL	E	6	2	-	-	0/3/2/2
2	GAL	E	7	2	-	0/2/19/22	0/1/1/1
2	AAL	E	8	2	-	-	0/3/2/2
2	GAL	F	1	2	-	2/2/22/22	0/1/1/1
2	AAL	F	2	2	-	-	0/3/2/2
2	GAL	F	3	2	-	1/2/19/22	0/1/1/1
2	AAL	F	4	2	1/1/4/5	-	0/3/2/2
2	GAL	F	5	2	-	0/2/19/22	0/1/1/1
2	AAL	F	6	2	-	-	0/3/2/2
2	GAL	F	7	2	-	0/2/19/22	0/1/1/1
2	AAL	F	8	2	-	-	0/3/2/2
2	GAL	G	1	2	-	2/2/22/22	0/1/1/1
2	AAL	G	2	2	1/1/4/5	-	0/3/2/2
2	GAL	G	3	2	1/1/4/5	1/2/19/22	0/1/1/1
2	AAL	G	4	2	-	-	0/3/2/2
2	GAL	G	5	2	-	0/2/19/22	0/1/1/1
2	AAL	G	6	2	-	-	0/3/2/2
2	GAL	G	7	2	-	0/2/19/22	0/1/1/1
2	AAL	G	8	2	-	-	0/3/2/2
2	GAL	H	1	2	-	2/2/22/22	0/1/1/1
2	AAL	H	2	2	-	-	0/3/2/2
2	GAL	H	3	2	-	1/2/19/22	0/1/1/1
2	AAL	H	4	2	1/1/4/5	-	0/3/2/2
2	GAL	H	5	2	-	0/2/19/22	0/1/1/1
2	AAL	H	6	2	-	-	0/3/2/2
2	GAL	H	7	2	-	0/2/19/22	0/1/1/1
2	AAL	H	8	2	-	-	0/3/2/2

All (36) bond length outliers are listed below:

Mol	Chain	Res	Type	Atoms	Z	Observed(Å)	Ideal(Å)
2	H	4	AAL	C4-C3	-3.74	1.44	1.52
2	E	6	AAL	O5-C1	3.69	1.49	1.43
2	E	8	AAL	O5-C1	3.55	1.49	1.43
2	F	6	AAL	O5-C1	3.37	1.49	1.43
2	H	4	AAL	C1-C2	3.32	1.59	1.52
2	H	8	AAL	C1-C2	3.12	1.59	1.52
2	G	8	AAL	O3-C6	2.79	1.50	1.43
2	E	3	GAL	C4-C5	2.77	1.58	1.53
2	G	6	AAL	C6-C5	2.76	1.57	1.52
2	G	6	AAL	C1-C2	2.67	1.58	1.52
2	G	2	AAL	C1-C2	2.67	1.58	1.52
2	G	4	AAL	O3-C3	-2.62	1.38	1.43
2	F	7	GAL	O5-C1	2.58	1.47	1.43
2	G	4	AAL	C4-C3	-2.51	1.47	1.52
2	H	8	AAL	O5-C1	2.48	1.47	1.43
2	G	3	GAL	C4-C5	2.47	1.58	1.53
2	G	8	AAL	C1-C2	2.45	1.57	1.52
2	F	3	GAL	C4-C5	2.37	1.58	1.53
2	E	8	AAL	C1-C2	2.36	1.57	1.52
2	H	6	AAL	C1-C2	2.31	1.57	1.52
2	H	4	AAL	O2-C2	2.31	1.48	1.43
2	F	5	GAL	C4-C5	2.25	1.57	1.53
2	F	4	AAL	C1-C2	2.24	1.57	1.52
2	F	6	AAL	C1-C2	2.23	1.57	1.52
2	F	8	AAL	C4-C5	-2.22	1.47	1.53
2	E	6	AAL	C2-C3	2.21	1.56	1.52
2	F	7	GAL	C2-C3	2.20	1.55	1.52
2	F	6	AAL	O5-C5	2.20	1.47	1.43
2	F	8	AAL	O5-C1	2.14	1.47	1.43
2	H	7	GAL	C4-C5	2.13	1.57	1.53
2	H	7	GAL	C2-C3	2.13	1.55	1.52
2	H	6	AAL	C2-C3	2.07	1.56	1.52
2	F	5	GAL	C2-C3	2.03	1.55	1.52
2	H	7	GAL	O5-C5	2.03	1.47	1.43
2	G	6	AAL	O5-C1	2.03	1.47	1.43
2	F	5	GAL	C1-C2	2.01	1.56	1.52

All (147) bond angle outliers are listed below:

Mol	Chain	Res	Type	Atoms	Z	Observed(°)	Ideal(°)
2	H	3	GAL	C2-C3-C4	-12.52	89.22	110.89
2	G	4	AAL	C1-C2-C3	7.93	118.76	109.17

*Continued on next page...*

*Continued from previous page...*

Mol	Chain	Res	Type	Atoms	Z	Observed(°)	Ideal(°)
2	H	4	AAL	O2-C2-C1	7.90	125.31	109.15
2	H	4	AAL	C2-C3-C4	-7.77	94.60	113.85
2	G	4	AAL	O3-C3-C4	-7.77	89.69	103.59
2	G	4	AAL	O5-C1-C2	-7.43	99.31	110.77
2	G	3	GAL	C2-C3-C4	-7.42	98.06	110.89
2	G	4	AAL	O4-C4-C5	7.35	132.31	111.05
2	H	4	AAL	O4-C4-C5	7.31	132.19	111.05
2	E	2	AAL	O5-C5-C6	-6.69	103.39	113.33
2	E	4	AAL	O4-C4-C3	6.30	129.06	111.17
2	H	2	AAL	O5-C5-C6	-6.10	104.28	113.33
2	G	2	AAL	O4-C4-C3	6.01	128.23	111.17
2	H	2	AAL	O4-C4-C3	5.99	128.18	111.17
2	F	4	AAL	O4-C4-C3	5.75	127.48	111.17
2	E	5	GAL	C1-C2-C3	5.32	116.20	109.67
2	G	3	GAL	O3-C3-C2	-5.18	100.08	109.99
2	G	2	AAL	O5-C1-C2	5.17	118.75	110.77
2	F	2	AAL	O5-C5-C6	-5.09	105.78	113.33
2	F	2	AAL	O4-C4-C3	5.01	125.40	111.17
2	E	7	GAL	O5-C5-C6	4.84	114.79	107.20
2	E	4	AAL	O4-C4-C5	4.81	124.95	111.05
2	E	2	AAL	O4-C4-C3	4.80	124.80	111.17
2	H	2	AAL	O3-C3-C2	-4.76	97.19	108.07
2	F	3	GAL	O5-C5-C4	4.61	122.04	110.83
2	F	1	GAL	O5-C5-C4	4.57	117.99	109.69
2	H	4	AAL	O3-C3-C2	4.56	118.49	108.07
2	F	5	GAL	C1-C2-C3	4.56	115.27	109.67
2	H	1	GAL	C3-C4-C5	4.55	118.35	110.24
2	F	1	GAL	C6-C5-C4	-4.41	102.66	113.00
2	E	2	AAL	C1-O5-C5	-4.35	106.29	112.19
2	F	8	AAL	O5-C5-C6	4.34	119.77	113.33
2	E	4	AAL	O5-C5-C6	-4.27	106.99	113.33
2	F	4	AAL	O4-C4-C5	4.24	123.31	111.05
2	H	7	GAL	O3-C3-C2	-4.01	102.32	109.99
2	F	3	GAL	C2-C3-C4	-3.99	103.99	110.89
2	E	6	AAL	O3-C3-C4	-3.94	96.55	103.59
2	E	3	GAL	O5-C5-C4	3.93	120.40	110.83
2	F	8	AAL	C6-C5-C4	-3.93	95.40	102.28
2	E	3	GAL	C2-C3-C4	-3.92	104.11	110.89
2	H	4	AAL	O4-C4-C3	3.90	122.25	111.17
2	E	4	AAL	O2-C2-C1	-3.89	101.19	109.15
2	H	3	GAL	O3-C3-C2	-3.88	102.57	109.99
2	G	5	GAL	C1-O5-C5	3.87	117.44	112.19

*Continued on next page...*



*Continued from previous page...*

Mol	Chain	Res	Type	Atoms	Z	Observed(°)	Ideal(°)
2	G	4	AAL	O5-C5-C6	-3.78	107.72	113.33
2	F	1	GAL	C1-C2-C3	-3.77	102.48	110.31
2	H	6	AAL	C6-C5-C4	-3.77	95.69	102.28
2	G	4	AAL	C6-C5-C4	-3.63	95.93	102.28
2	E	8	AAL	C6-C5-C4	-3.62	95.95	102.28
2	F	6	AAL	C6-C5-C4	-3.62	95.96	102.28
2	G	5	GAL	O6-C6-C5	-3.60	98.96	111.29
2	F	1	GAL	C3-C4-C5	3.59	116.64	110.24
2	H	3	GAL	O4-C4-C5	-3.58	100.41	109.30
2	H	4	AAL	O3-C6-C5	-3.57	98.13	104.52
2	F	8	AAL	O5-C1-C2	3.57	116.27	110.77
2	H	8	AAL	C6-C5-C4	-3.47	96.20	102.28
2	F	4	AAL	O5-C1-C2	3.42	116.06	110.77
2	E	2	AAL	O4-C4-C5	3.41	120.91	111.05
2	F	2	AAL	O4-C4-C5	3.38	120.83	111.05
2	F	4	AAL	O5-C5-C6	-3.37	108.33	113.33
2	E	1	GAL	C3-C4-C5	3.37	116.25	110.24
2	E	7	GAL	O6-C6-C5	-3.33	99.85	111.29
2	E	3	GAL	C3-C4-C5	3.32	116.16	110.24
2	E	3	GAL	C1-C2-C3	-3.31	105.59	109.67
2	E	7	GAL	C6-C5-C4	-3.30	105.27	113.00
2	H	5	GAL	O6-C6-C5	-3.29	100.02	111.29
2	G	3	GAL	O3-C3-C4	3.27	117.90	110.35
2	F	1	GAL	O6-C6-C5	-3.22	100.23	111.29
2	G	6	AAL	O4-C4-C3	3.19	120.24	111.17
2	E	8	AAL	O5-C5-C6	3.18	118.04	113.33
2	G	3	GAL	O5-C1-C2	-3.14	105.92	110.77
2	F	7	GAL	O3-C3-C2	-3.14	103.99	109.99
2	E	6	AAL	O4-C4-C3	3.13	120.06	111.17
2	G	6	AAL	O3-C3-C4	-3.12	98.00	103.59
2	G	1	GAL	C4-C3-C2	-3.10	105.42	110.82
2	F	4	AAL	O3-C3-C2	-3.04	101.11	108.07
2	G	8	AAL	O3-C3-C4	-3.03	98.17	103.59
2	F	1	GAL	O3-C3-C4	-3.02	103.36	110.35
2	F	4	AAL	O3-C3-C4	-3.02	98.19	103.59
2	G	4	AAL	C2-C3-C4	2.99	121.26	113.85
2	F	2	AAL	C1-C2-C3	-2.97	105.59	109.17
2	F	8	AAL	O4-C4-C3	2.96	119.57	111.17
2	F	6	AAL	O3-C3-C4	-2.92	98.36	103.59
2	G	7	GAL	O5-C1-C2	2.90	115.24	110.77
2	E	4	AAL	C1-C2-C3	2.87	112.64	109.17
2	E	2	AAL	O3-C3-C4	-2.86	98.47	103.59

*Continued on next page...*

*Continued from previous page...*

Mol	Chain	Res	Type	Atoms	Z	Observed(°)	Ideal(°)
2	E	5	GAL	O3-C3-C2	-2.86	104.53	109.99
2	F	7	GAL	O4-C4-C3	2.85	116.93	110.35
2	G	7	GAL	O3-C3-C4	-2.84	103.78	110.35
2	H	8	AAL	O3-C3-C4	-2.80	98.57	103.59
2	H	4	AAL	O5-C1-C2	2.79	115.08	110.77
2	E	2	AAL	O3-C3-C2	-2.78	101.70	108.07
2	F	8	AAL	O3-C3-C4	-2.78	98.61	103.59
2	F	7	GAL	O6-C6-C5	-2.75	101.85	111.29
2	E	1	GAL	O5-C5-C6	2.75	113.28	106.44
2	E	8	AAL	O4-C4-C3	2.75	118.97	111.17
2	F	7	GAL	O4-C4-C5	-2.73	102.52	109.30
2	E	5	GAL	C2-C3-C4	-2.69	106.24	110.89
2	F	6	AAL	O3-C6-C5	-2.68	99.72	104.52
2	G	3	GAL	O2-C2-C1	2.68	114.64	109.15
2	G	2	AAL	C1-C2-C3	2.66	112.39	109.17
2	F	4	AAL	O2-C2-C1	2.64	114.56	109.15
2	G	4	AAL	C3-C4-C5	-2.62	96.31	101.99
2	H	2	AAL	O5-C1-C2	-2.59	106.77	110.77
2	F	2	AAL	O5-C1-C2	2.58	114.76	110.77
2	F	2	AAL	O3-C3-C2	-2.57	102.20	108.07
2	G	8	AAL	O5-C5-C6	-2.56	109.52	113.33
2	G	8	AAL	C6-C5-C4	-2.55	97.83	102.28
2	H	3	GAL	O4-C4-C3	-2.54	104.48	110.35
2	G	5	GAL	O3-C3-C2	-2.53	105.15	109.99
2	E	5	GAL	O2-C2-C1	-2.47	104.09	109.15
2	H	4	AAL	O5-C5-C6	2.47	116.99	113.33
2	F	6	AAL	O4-C4-C3	2.45	118.12	111.17
2	F	8	AAL	C1-O5-C5	-2.44	108.89	112.19
2	F	1	GAL	O5-C1-C2	-2.42	105.97	110.28
2	F	1	GAL	O3-C3-C2	2.41	115.93	110.35
2	F	2	AAL	C1-O5-C5	-2.41	108.93	112.19
2	H	4	AAL	O2-C2-C3	-2.41	104.37	110.07
2	E	8	AAL	O5-C1-C2	2.40	114.47	110.77
2	H	2	AAL	C3-C4-C5	-2.36	96.87	101.99
2	F	3	GAL	C3-C4-C5	2.34	114.41	110.24
2	F	5	GAL	O3-C3-C2	-2.32	105.55	109.99
2	F	2	AAL	C6-O3-C3	2.30	112.54	107.84
2	H	5	GAL	O2-C2-C3	2.30	114.75	110.14
2	E	5	GAL	O5-C5-C6	2.28	110.78	107.20
2	H	8	AAL	O5-C5-C6	2.26	116.68	113.33
2	G	3	GAL	O5-C5-C6	2.25	110.72	107.20
2	E	6	AAL	C6-C5-C4	-2.24	98.36	102.28

*Continued on next page...*

Continued from previous page...

Mol	Chain	Res	Type	Atoms	Z	Observed(°)	Ideal(°)
2	H	1	GAL	C4-C3-C2	-2.24	106.91	110.82
2	H	6	AAL	O5-C1-C2	2.22	114.20	110.77
2	F	3	GAL	C1-O5-C5	2.21	115.19	112.19
2	H	8	AAL	C1-C2-C3	-2.21	106.50	109.17
2	E	7	GAL	O4-C4-C5	-2.20	103.82	109.30
2	G	3	GAL	O5-C5-C4	2.19	116.16	110.83
2	H	1	GAL	O3-C3-C2	2.19	115.40	110.35
2	H	3	GAL	O5-C5-C6	2.18	110.63	107.20
2	G	2	AAL	O3-C3-C2	-2.15	103.15	108.07
2	H	6	AAL	O3-C3-C4	-2.14	99.77	103.59
2	H	2	AAL	O2-C2-C3	2.13	115.13	110.07
2	E	3	GAL	O2-C2-C1	2.12	113.49	109.15
2	H	6	AAL	C1-C2-C3	-2.09	106.64	109.17
2	F	6	AAL	C6-O3-C3	2.08	112.08	107.84
2	F	3	GAL	O6-C6-C5	-2.07	104.19	111.29
2	E	2	AAL	O2-C2-C3	2.07	114.97	110.07
2	F	6	AAL	O2-C2-C3	-2.06	105.18	110.07
2	H	2	AAL	O4-C4-C5	2.05	116.98	111.05
2	E	3	GAL	O3-C3-C4	2.02	115.03	110.35

All (4) chirality outliers are listed below:

Mol	Chain	Res	Type	Atom
2	F	4	AAL	C1
2	G	2	AAL	C1
2	G	3	GAL	C1
2	H	4	AAL	C1

All (11) torsion outliers are listed below:

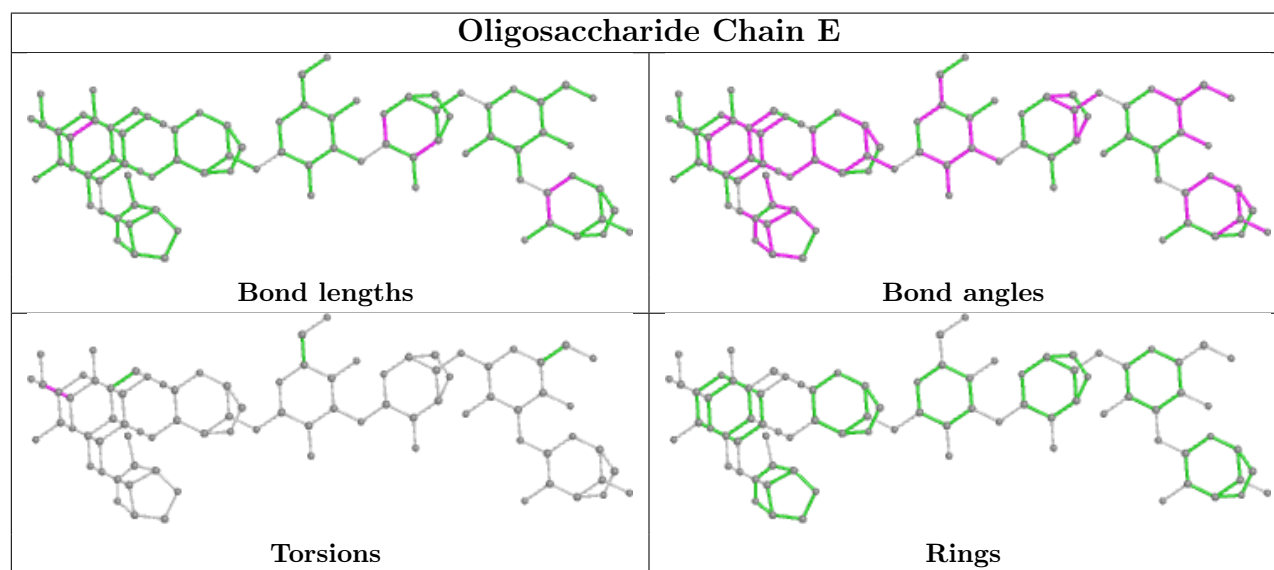
Mol	Chain	Res	Type	Atoms
2	F	1	GAL	O5-C5-C6-O6
2	H	1	GAL	O5-C5-C6-O6
2	H	1	GAL	C4-C5-C6-O6
2	E	3	GAL	O5-C5-C6-O6
2	F	1	GAL	C4-C5-C6-O6
2	G	1	GAL	C4-C5-C6-O6
2	E	3	GAL	C4-C5-C6-O6
2	G	1	GAL	O5-C5-C6-O6
2	F	3	GAL	C4-C5-C6-O6
2	G	3	GAL	O5-C5-C6-O6
2	H	3	GAL	O5-C5-C6-O6

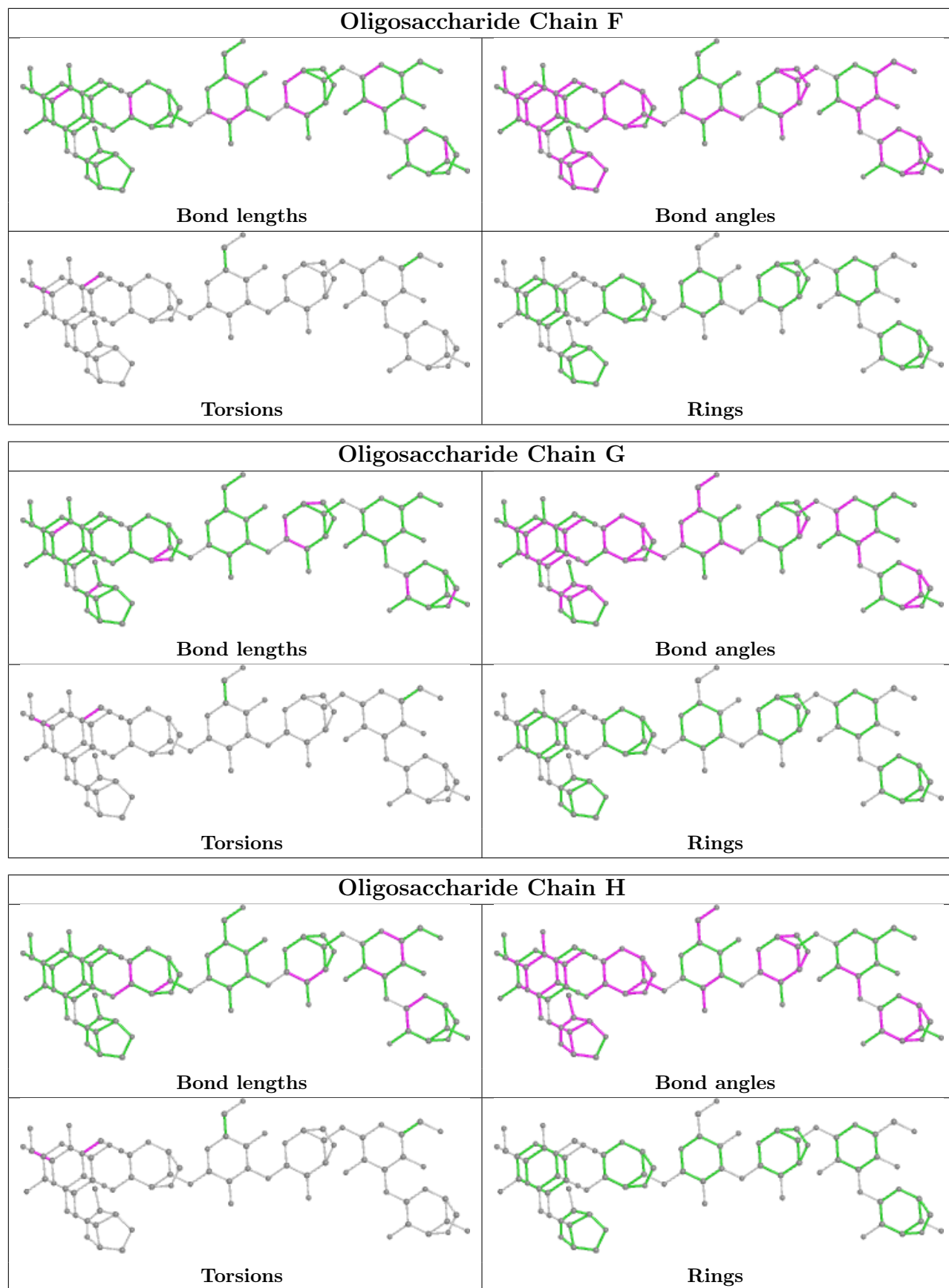
There are no ring outliers.

14 monomers are involved in 78 short contacts:

Mol	Chain	Res	Type	Clashes	Symm-Clashes
2	G	5	GAL	3	0
2	G	4	AAL	19	0
2	F	4	AAL	4	0
2	F	5	GAL	3	0
2	G	1	GAL	2	0
2	F	1	GAL	2	0
2	E	4	AAL	3	0
2	E	1	GAL	16	0
2	H	2	AAL	1	0
2	H	1	GAL	14	0
2	E	5	GAL	1	0
2	E	2	AAL	1	0
2	H	5	GAL	4	0
2	H	4	AAL	14	0

The following is a two-dimensional graphical depiction of Mogul quality analysis of bond lengths, bond angles, torsion angles, and ring geometry for oligosaccharide.





## 5.6 Ligand geometry

Of 4 ligands modelled in this entry, 4 are monoatomic - leaving 0 for Mogul analysis.

There are no bond length outliers.

There are no bond angle outliers.

There are no chirality outliers.

There are no torsion outliers.

There are no ring outliers.

No monomer is involved in short contacts.

## 5.7 Other polymers

There are no such residues in this entry.

## 5.8 Polymer linkage issues

There are no chain breaks in this entry.

## 6 Fit of model and data [i](#)

### 6.1 Protein, DNA and RNA chains [i](#)

In the following table, the column labelled ‘#RSRZ > 2’ contains the number (and percentage) of RSRZ outliers, followed by percent RSRZ outliers for the chain as percentile scores relative to all X-ray entries and entries of similar resolution. The OWAB column contains the minimum, median, 95<sup>th</sup> percentile and maximum values of the occupancy-weighted average B-factor per residue. The column labelled ‘Q < 0.9’ lists the number of (and percentage) of residues with an average occupancy less than 0.9.

Mol	Chain	Analysed	<RSRZ>	#RSRZ>2	OWAB(Å <sup>2</sup> )	Q<0.9
1	A	295/308 (95%)	-0.63	1 (0%) 94 94	9, 16, 28, 31	26 (8%)
1	B	296/308 (96%)	-0.54	4 (1%) 75 77	9, 16, 30, 43	16 (5%)
1	C	297/308 (96%)	-0.57	5 (1%) 70 72	9, 16, 28, 36	24 (8%)
1	D	297/308 (96%)	-0.55	2 (0%) 87 88	8, 16, 28, 34	20 (6%)
All	All	1185/1232 (96%)	-0.57	12 (1%) 82 84	8, 16, 29, 43	86 (7%)

All (12) RSRZ outliers are listed below:

Mol	Chain	Res	Type	RSRZ
1	B	291	ILE	4.1
1	B	58	VAL	3.4
1	C	72	ASN	3.4
1	D	354	LEU	3.1
1	B	284	THR	3.0
1	D	91	ASP	2.4
1	C	285	ASP	2.2
1	C	320	LEU	2.1
1	B	317	ALA	2.1
1	C	71	PRO	2.1
1	A	220	ASP	2.1
1	C	354	LEU	2.0

### 6.2 Non-standard residues in protein, DNA, RNA chains [i](#)

There are no non-standard protein/DNA/RNA residues in this entry.

### 6.3 Carbohydrates i

In the following table, the Atoms column lists the number of modelled atoms in the group and the number defined in the chemical component dictionary. The B-factors column lists the minimum, median, 95<sup>th</sup> percentile and maximum values of B factors of atoms in the group. The column labelled 'Q< 0.9' lists the number of atoms with occupancy less than 0.9.

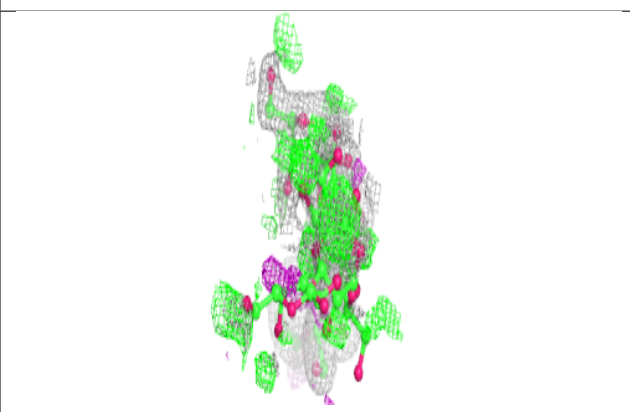
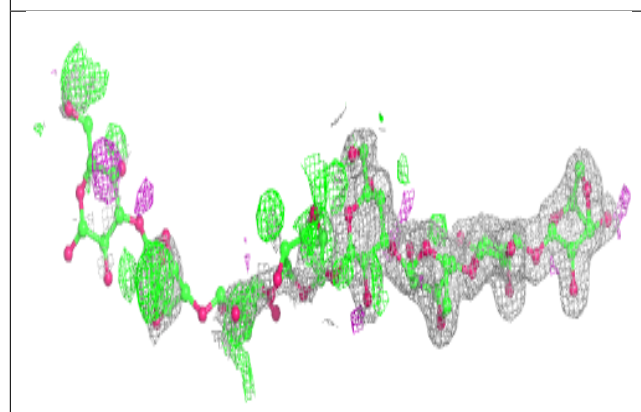
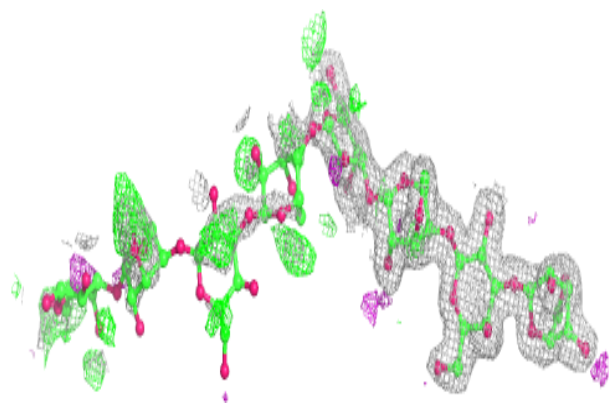
Mol	Type	Chain	Res	Atoms	RSCC	RSR	B-factors(Å <sup>2</sup> )	Q<0.9
2	GAL	E	1	12/12	0.14	1.00	37,39,40,41	12
2	GAL	H	1	12/12	0.25	1.01	36,38,40,40	12
2	AAL	G	2	10/11	0.32	0.51	29,30,31,31	10
2	GAL	G	1	12/12	0.34	0.49	33,36,37,37	12
2	AAL	E	2	10/11	0.40	0.53	23,29,30,34	10
2	GAL	F	1	12/12	0.43	0.66	30,32,33,33	12
2	AAL	F	2	10/11	0.44	0.53	25,28,30,32	10
2	GAL	H	3	11/12	0.48	0.55	18,27,29,30	11
2	GAL	G	3	11/12	0.52	0.48	16,24,26,26	11
2	AAL	F	4	10/11	0.56	0.59	20,30,30,31	10
2	AAL	H	2	10/11	0.57	0.55	33,33,34,34	10
2	GAL	E	3	11/12	0.60	0.47	33,34,35,38	11
2	AAL	E	4	10/11	0.65	0.50	30,32,34,36	10
2	GAL	F	3	11/12	0.66	0.53	24,29,30,34	11
2	AAL	G	4	10/11	0.78	0.43	6,13,17,19	10
2	AAL	H	4	10/11	0.81	0.41	2,13,15,16	10
2	AAL	E	8	10/11	0.94	0.17	22,26,28,29	0
2	GAL	F	5	11/12	0.95	0.08	19,23,29,31	0
2	GAL	E	5	11/12	0.96	0.10	22,27,31,40	0
2	AAL	F	8	10/11	0.97	0.16	19,22,24,31	0
2	GAL	G	5	11/12	0.97	0.06	16,17,21,26	0
2	GAL	E	7	11/12	0.97	0.10	19,22,25,34	0
2	GAL	H	5	11/12	0.97	0.07	12,15,20,23	0
2	GAL	H	7	11/12	0.97	0.07	12,13,18,24	0
2	AAL	E	6	10/11	0.98	0.08	15,18,21,23	0
2	AAL	F	6	10/11	0.98	0.05	12,16,18,20	0
2	GAL	F	7	11/12	0.98	0.09	14,16,20,30	0
2	AAL	G	6	10/11	0.98	0.06	13,15,18,19	0
2	GAL	G	7	11/12	0.98	0.09	14,15,20,25	0
2	AAL	H	6	10/11	0.98	0.06	9,12,14,17	0
2	AAL	G	8	10/11	0.98	0.08	15,16,18,18	0
2	AAL	H	8	10/11	0.98	0.08	13,16,19,21	0

The following is a graphical depiction of the model fit to experimental electron density for oligosaccharide. Each fit is shown from different orientation to approximate a three-dimensional view.

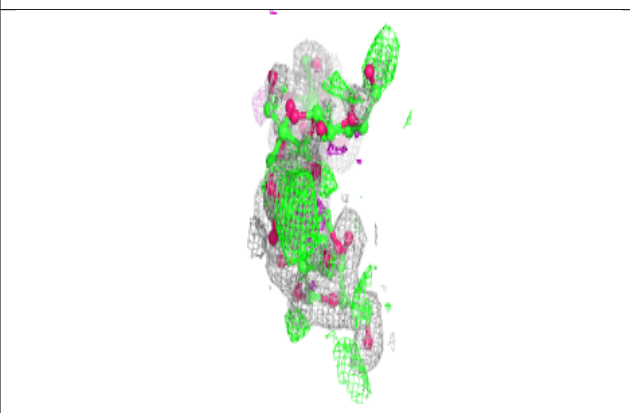
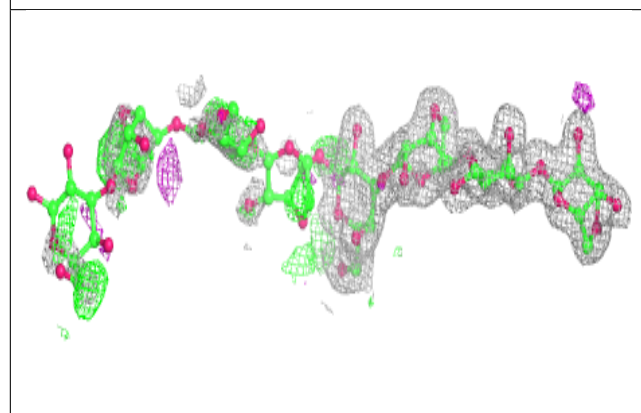
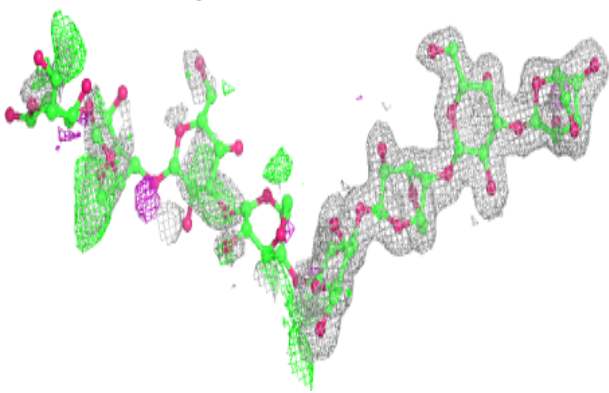


**Electron density around Chain E:**

$2mF_o-DF_c$  (at 0.7 rnsd) in gray  
 $mF_o-DF_c$  (at 3 rnsd) in purple (negative)  
and green (positive)

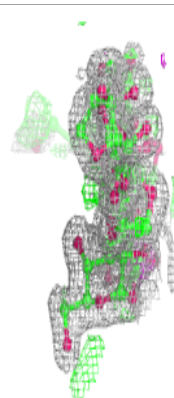
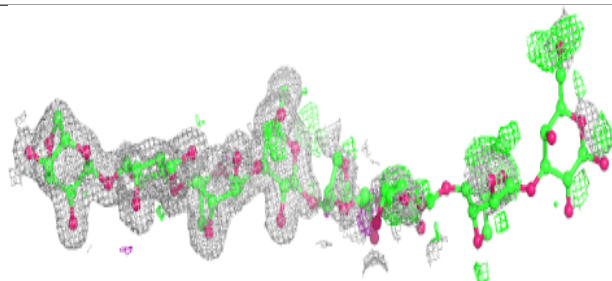
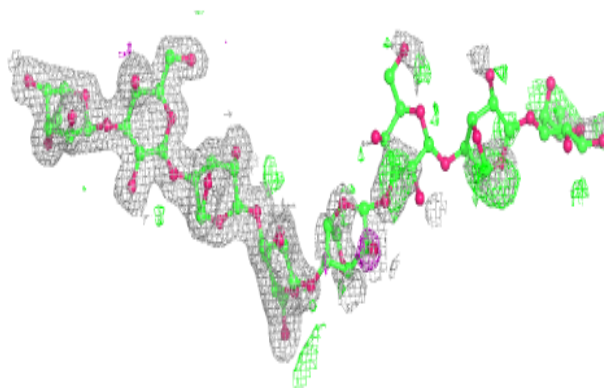
**Electron density around Chain F:**

$2mF_o-DF_c$  (at 0.7 rnsd) in gray  
 $mF_o-DF_c$  (at 3 rnsd) in purple (negative)  
and green (positive)

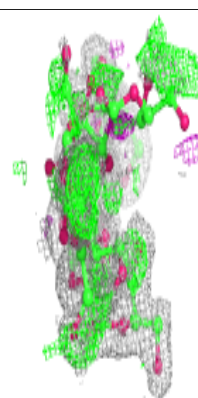
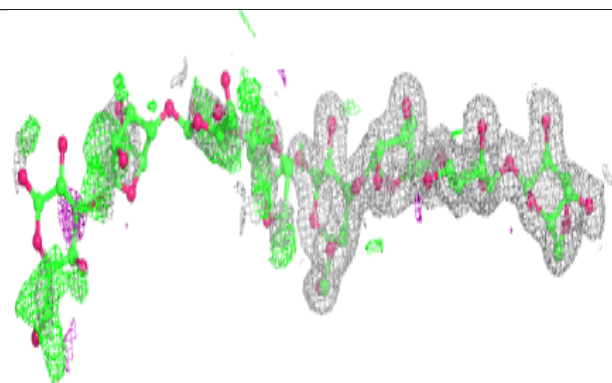
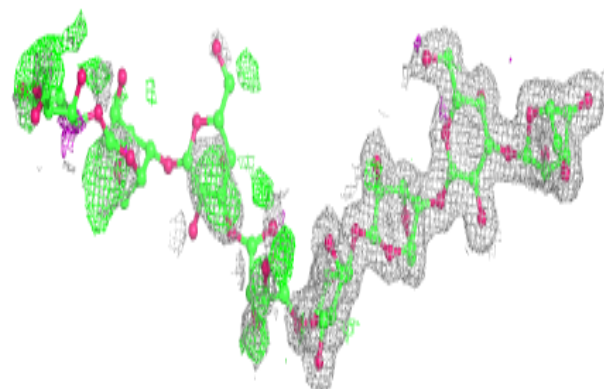


**Electron density around Chain G:**

$2mF_o-DF_c$  (at 0.7 rmsd) in gray  
 $mF_o-DF_c$  (at 3 rmsd) in purple (negative)  
and green (positive)

**Electron density around Chain H:**

$2mF_o-DF_c$  (at 0.7 rmsd) in gray  
 $mF_o-DF_c$  (at 3 rmsd) in purple (negative)  
and green (positive)



## 6.4 Ligands [i](#)

In the following table, the Atoms column lists the number of modelled atoms in the group and the number defined in the chemical component dictionary. The B-factors column lists the minimum, median, 95<sup>th</sup> percentile and maximum values of B factors of atoms in the group. The column labelled 'Q< 0.9' lists the number of atoms with occupancy less than 0.9.

Mol	Type	Chain	Res	Atoms	RSCC	RSR	B-factors(Å <sup>2</sup> )	Q<0.9
3	NA	C	500	1/1	0.99	0.05	22,22,22,22	0
3	NA	D	500	1/1	0.99	0.06	13,13,13,13	0
3	NA	A	500	1/1	1.00	0.04	14,14,14,14	0
3	NA	B	500	1/1	1.00	0.03	14,14,14,14	0

## 6.5 Other polymers [i](#)

There are no such residues in this entry.