



Full wwPDB EM Validation Report ⓘ

Dec 10, 2022 – 08:37 am GMT

PDB ID : 5APM
EMDB ID : EMD-3137
Title : Multiple capsid-stabilizing protein-RNA and protein-protein interactions revealed in a high-resolution structure of an emerging picornavirus causing neonatal sepsis
Authors : Shakeel, S.; Westerhuis, B.M.; Domanska, A.; Koning, R.I.; Matadeen, R.; Koster, A.J.; Bakker, A.Q.; Beaumont, T.; Wolthers, K.C.; Butcher, S.J.
Deposited on : 2015-09-17
Resolution : 4.30 Å(reported)

This is a Full wwPDB EM Validation Report for a publicly released PDB entry.

We welcome your comments at validation@mail.wwpdb.org

A user guide is available at

<https://www.wwpdb.org/validation/2017/EMValidationReportHelp>

with specific help available everywhere you see the ⓘ symbol.

The types of validation reports are described at

<http://www.wwpdb.org/validation/2017/FAQs#types>.

The following versions of software and data (see [references ⓘ](#)) were used in the production of this report:

EMDB validation analysis : 0.0.1.dev43
MolProbity : 4.02b-467
Percentile statistics : 20191225.v01 (using entries in the PDB archive December 25th 2019)
MapQ : 1.9.9
Ideal geometry (proteins) : Engh & Huber (2001)
Ideal geometry (DNA, RNA) : Parkinson et al. (1996)
Validation Pipeline (wwPDB-VP) : 2.31.3

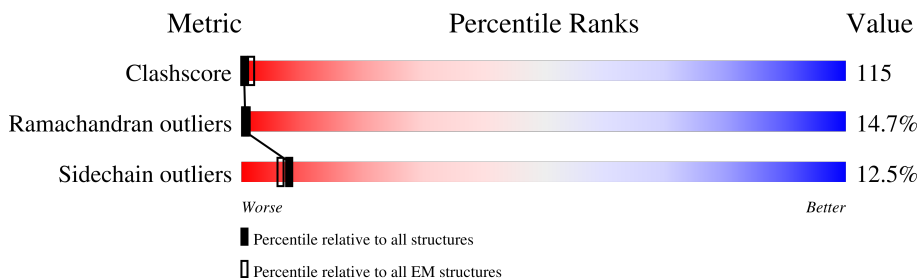
1 Overall quality at a glance i

The following experimental techniques were used to determine the structure:

ELECTRON MICROSCOPY

The reported resolution of this entry is 4.30 Å.

Percentile scores (ranging between 0-100) for global validation metrics of the entry are shown in the following graphic. The table shows the number of entries on which the scores are based.



Metric	Whole archive (#Entries)	EM structures (#Entries)
Clashscore	158937	4297
Ramachandran outliers	154571	4023
Sidechain outliers	154315	3826

The table below summarises the geometric issues observed across the polymeric chains and their fit to the map. The red, orange, yellow and green segments of the bar indicate the fraction of residues that contain outliers for ≥ 3 , 2, 1 and 0 types of geometric quality criteria respectively. A grey segment represents the fraction of residues that are not modelled. The numeric value for each fraction is indicated below the corresponding segment, with a dot representing fractions $\leq 5\%$. The upper red bar (where present) indicates the fraction of residues that have poor fit to the EM map (all-atom inclusion $< 40\%$). The numeric value is given above the bar.

Mol	Chain	Length	Quality of chain
1	A	198	36% 25% 50% 21% 5%
2	B	237	30% 25% 52% 19% .
3	C	263	27% 36% 45% 15% .

2 Entry composition

There are 3 unique types of molecules in this entry. The entry contains 5490 atoms, of which 0 are hydrogens and 0 are deuteriums.

In the tables below, the AltConf column contains the number of residues with at least one atom in alternate conformation and the Trace column contains the number of residues modelled with at most 2 atoms.

- Molecule 1 is a protein called VP1.

Mol	Chain	Residues	Atoms					AltConf	Trace
			Total	C	N	O	S		
1	A	198	1577	1006	273	289	9	0	0

- Molecule 2 is a protein called VP3.

Mol	Chain	Residues	Atoms					AltConf	Trace
			Total	C	N	O	S		
2	B	237	1874	1186	322	354	12	0	0

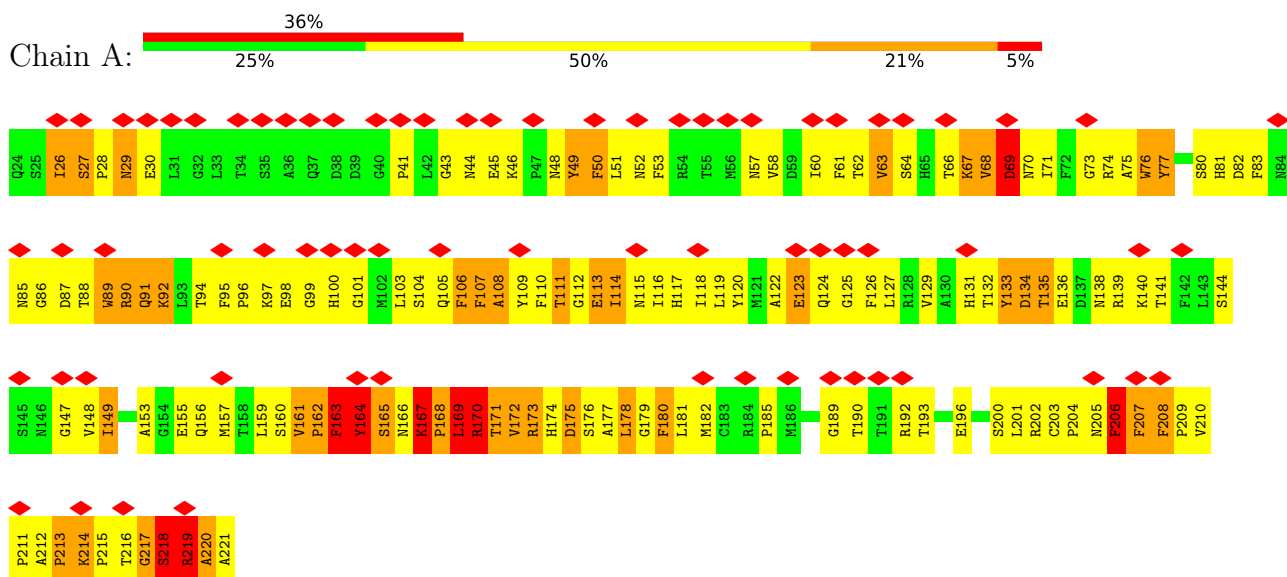
- Molecule 3 is a protein called VP0.

Mol	Chain	Residues	Atoms					AltConf	Trace
			Total	C	N	O	S		
3	C	263	2039	1283	341	410	5	0	0

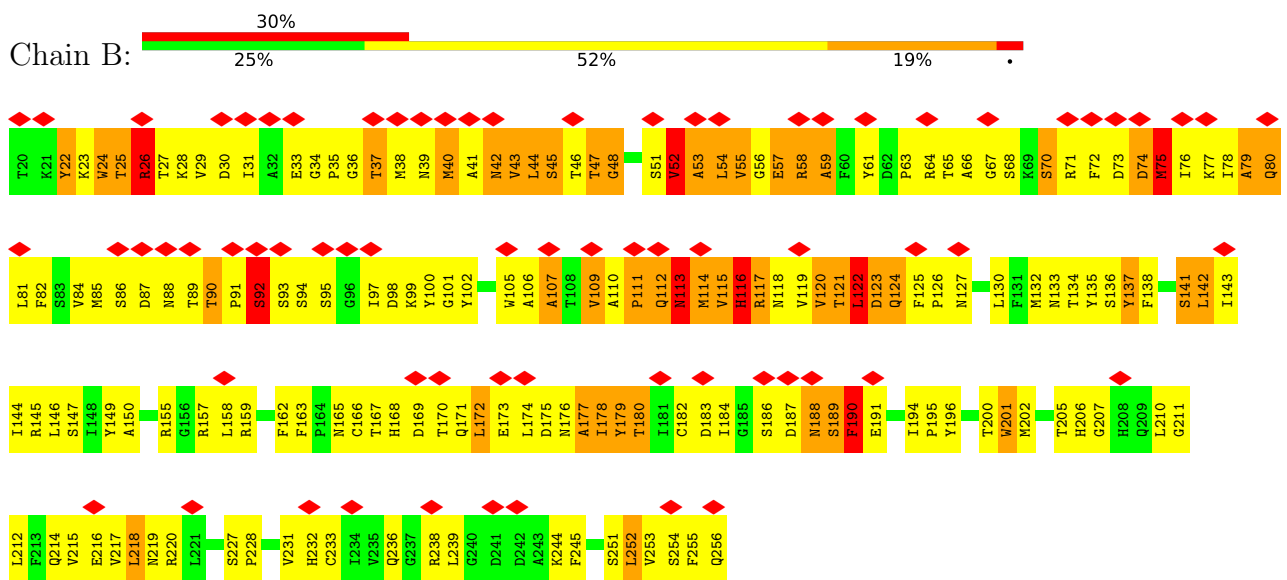
3 Residue-property plots

These plots are drawn for all protein, RNA, DNA and oligosaccharide chains in the entry. The first graphic for a chain summarises the proportions of the various outlier classes displayed in the second graphic. The second graphic shows the sequence view annotated by issues in geometry and atom inclusion in map density. Residues are color-coded according to the number of geometric quality criteria for which they contain at least one outlier: green = 0, yellow = 1, orange = 2 and red = 3 or more. A red diamond above a residue indicates a poor fit to the EM map for this residue (all-atom inclusion < 40%). Stretches of 2 or more consecutive residues without any outlier are shown as a green connector. Residues present in the sample, but not in the model, are shown in grey.

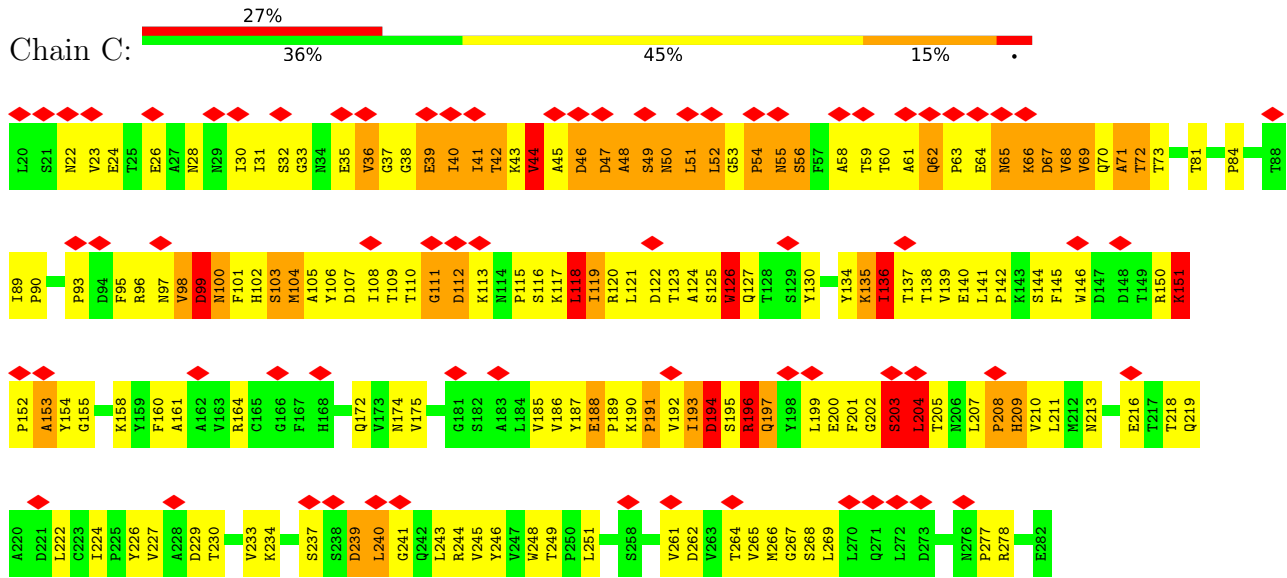
• Molecule 1: VP1



• Molecule 2: VP3



• Molecule 3: VP0



4 Experimental information

Property	Value	Source
EM reconstruction method	SINGLE PARTICLE	Depositor
Imposed symmetry	POINT, I	Depositor
Number of particles used	8889	Depositor
Resolution determination method	Not provided	
CTF correction method	MICROGRAPHS	Depositor
Microscope	FEI TITAN KRIOS	Depositor
Voltage (kV)	300	Depositor
Electron dose ($e^-/\text{\AA}^2$)	36	Depositor
Minimum defocus (nm)	420	Depositor
Maximum defocus (nm)	2340	Depositor
Magnification	59000	Depositor
Image detector	FEI FALCON II (4k x 4k)	Depositor
Maximum map value	0.200	Depositor
Minimum map value	-0.114	Depositor
Average map value	0.000	Depositor
Map value standard deviation	0.017	Depositor
Recommended contour level	0.05	Depositor
Map size (\AA)	456.0, 456.0, 456.0	wwPDB
Map dimensions	400, 400, 400	wwPDB
Map angles ($^\circ$)	90.0, 90.0, 90.0	wwPDB
Pixel spacing (\AA)	1.14, 1.14, 1.14	Depositor

5 Model quality i

5.1 Standard geometry i

The Z score for a bond length (or angle) is the number of standard deviations the observed value is removed from the expected value. A bond length (or angle) with $|Z| > 5$ is considered an outlier worth inspection. RMSZ is the root-mean-square of all Z scores of the bond lengths (or angles).

Mol	Chain	Bond lengths		Bond angles	
		RMSZ	# Z >5	RMSZ	# Z >5
1	A	0.55	0/1623	0.97	3/2204 (0.1%)
2	B	0.50	0/1919	0.88	1/2600 (0.0%)
3	C	0.83	1/2086 (0.0%)	1.04	10/2857 (0.4%)
All	All	0.65	1/5628 (0.0%)	0.96	14/7661 (0.2%)

Chiral center outliers are detected by calculating the chiral volume of a chiral center and verifying if the center is modelled as a planar moiety or with the opposite hand. A planarity outlier is detected by checking planarity of atoms in a peptide group, atoms in a mainchain group or atoms of a sidechain that are expected to be planar.

Mol	Chain	#Chirality outliers	#Planarity outliers
3	C	0	1

All (1) bond length outliers are listed below:

Mol	Chain	Res	Type	Atoms	Z	Observed(Å)	Ideal(Å)
3	C	118	LEU	C-N	-29.05	0.67	1.34

All (14) bond angle outliers are listed below:

Mol	Chain	Res	Type	Atoms	Z	Observed(°)	Ideal(°)
3	C	118	LEU	O-C-N	-24.50	83.51	122.70
3	C	112	ASP	C-N-CA	-15.45	83.09	121.70
3	C	118	LEU	CA-C-N	15.02	150.25	117.20
3	C	118	LEU	C-N-CA	11.97	151.62	121.70
3	C	112	ASP	CA-C-N	8.65	136.24	117.20
3	C	111	GLY	N-CA-C	-7.19	95.13	113.10
3	C	112	ASP	O-C-N	-5.63	113.69	122.70
1	A	49	TYR	CA-CB-CG	5.39	123.64	113.40
1	A	217	GLY	O-C-N	5.38	131.31	122.70
1	A	161	VAL	C-N-CD	5.35	139.63	128.40
3	C	126	TRP	C-N-CA	5.32	135.00	121.70
3	C	190	LYS	C-N-CD	5.31	139.54	128.40

Continued on next page...

Continued from previous page...

Mol	Chain	Res	Type	Atoms	Z	Observed(°)	Ideal(°)
2	B	218	LEU	CA-CB-CG	5.09	127.00	115.30
3	C	53	GLY	C-N-CD	5.01	138.91	128.40

There are no chirality outliers.

All (1) planarity outliers are listed below:

Mol	Chain	Res	Type	Group
3	C	118	LEU	Mainchain

5.2 Too-close contacts [i](#)

In the following table, the Non-H and H(model) columns list the number of non-hydrogen atoms and hydrogen atoms in the chain respectively. The H(added) column lists the number of hydrogen atoms added and optimized by MolProbity. The Clashes column lists the number of clashes within the asymmetric unit, whereas Symm-Clashes lists symmetry-related clashes.

Mol	Chain	Non-H	H(model)	H(added)	Clashes	Symm-Clashes
1	A	1577	0	1508	482	0
2	B	1874	0	1811	440	0
3	C	2039	0	1961	412	0
All	All	5490	0	5280	1243	0

The all-atom clashscore is defined as the number of clashes found per 1000 atoms (including hydrogen atoms). The all-atom clashscore for this structure is 115.

All (1243) close contacts within the same asymmetric unit are listed below, sorted by their clash magnitude.

Atom-1	Atom-2	Interatomic distance (Å)	Clash overlap (Å)
1:A:109:TYR:CD2	1:A:206:PHE:HZ	1.08	1.70
3:C:110:THR:CG2	3:C:111:GLY:HA2	1.22	1.65
3:C:31:ILE:HG23	3:C:44:VAL:CG1	1.21	1.58
1:A:51:LEU:CD1	1:A:53:PHE:HD2	1.11	1.57
1:A:117:HIS:CE1	2:B:44:LEU:HD21	1.38	1.56
3:C:110:THR:HG22	3:C:111:GLY:CA	1.31	1.55
1:A:51:LEU:CD1	1:A:53:PHE:CD2	1.86	1.54
1:A:174:HIS:CD2	1:A:214:LYS:NZ	1.75	1.53
3:C:145:PHE:C	3:C:153:ALA:HB1	1.22	1.53
1:A:109:TYR:CD2	1:A:206:PHE:CZ	1.98	1.51
3:C:43:LYS:HD2	3:C:49:SER:CB	1.39	1.51

Continued on next page...

Continued from previous page...

Atom-1	Atom-2	Interatomic distance (Å)	Clash overlap (Å)
2:B:182:CYS:SG	2:B:190:PHE:CE2	2.07	1.47
1:A:90:ARG:HG2	1:A:182:MET:SD	1.53	1.47
3:C:115:PRO:HA	3:C:152:PRO:CD	1.47	1.44
3:C:60:THR:O	3:C:64:GLU:CG	1.65	1.43
1:A:117:HIS:HE1	2:B:44:LEU:CD2	1.30	1.42
2:B:182:CYS:SG	2:B:190:PHE:HE2	1.40	1.41
1:A:174:HIS:CD2	1:A:214:LYS:HZ2	1.34	1.40
1:A:51:LEU:HD11	1:A:53:PHE:CD2	1.46	1.39
3:C:31:ILE:CG2	3:C:44:VAL:HG11	0.92	1.39
1:A:90:ARG:CG	1:A:182:MET:HE1	1.54	1.37
2:B:88:ASN:O	2:B:91:PRO:CB	1.69	1.37
1:A:174:HIS:HD2	1:A:214:LYS:NZ	0.85	1.34
2:B:88:ASN:C	2:B:91:PRO:HB3	1.48	1.34
2:B:116:HIS:O	2:B:117:ARG:CG	1.75	1.34
3:C:145:PHE:C	3:C:153:ALA:CB	1.97	1.31
1:A:210:VAL:O	1:A:213:PRO:HD2	1.29	1.31
1:A:103:LEU:O	1:A:106:PHE:CZ	1.83	1.31
2:B:56:GLY:HA2	2:B:57:GLU:CG	1.59	1.31
3:C:31:ILE:CG2	3:C:44:VAL:CG1	1.87	1.30
3:C:65:ASN:CA	3:C:67:ASP:N	1.93	1.30
3:C:146:TRP:HA	3:C:153:ALA:O	1.22	1.29
2:B:40:MET:HG2	2:B:43:VAL:O	1.26	1.29
3:C:192:VAL:HG13	3:C:194:ASP:CG	1.53	1.29
2:B:182:CYS:CB	2:B:190:PHE:HE2	1.46	1.28
3:C:65:ASN:HA	3:C:66:LYS:C	1.22	1.28
3:C:188:GLU:OE1	3:C:193:ILE:CD1	1.80	1.27
1:A:90:ARG:HG2	1:A:182:MET:CE	1.64	1.27
3:C:115:PRO:CA	3:C:152:PRO:HG3	1.63	1.26
3:C:192:VAL:HG13	3:C:194:ASP:OD1	1.33	1.26
1:A:90:ARG:CG	1:A:182:MET:CE	2.13	1.26
1:A:67:LYS:HG3	2:B:73:ASP:CB	1.66	1.26
1:A:66:THR:O	2:B:75:MET:HG3	1.29	1.25
1:A:133:TYR:OH	1:A:161:VAL:HG11	1.19	1.25
1:A:66:THR:O	2:B:75:MET:CG	1.84	1.25
3:C:203:SER:O	3:C:205:THR:N	1.69	1.25
1:A:103:LEU:C	1:A:106:PHE:CZ	2.10	1.24
1:A:67:LYS:HD3	2:B:73:ASP:OD2	1.26	1.24
1:A:96:PRO:O	1:A:177:ALA:HB2	1.30	1.24
1:A:172:VAL:HG21	1:A:175:ASP:OD1	1.23	1.24
2:B:40:MET:CG	2:B:43:VAL:O	1.84	1.24
3:C:145:PHE:O	3:C:153:ALA:CB	1.86	1.24

Continued on next page...

Continued from previous page...

Atom-1	Atom-2	Interatomic distance (Å)	Clash overlap (Å)
2:B:56:GLY:CA	2:B:57:GLU:HG2	1.66	1.23
1:A:215:PRO:CB	3:C:203:SER:HA	1.69	1.22
2:B:22:TYR:HB2	2:B:24:TRP:CA	1.67	1.22
1:A:109:TYR:CG	1:A:206:PHE:CZ	2.26	1.22
3:C:110:THR:CB	3:C:111:GLY:HA2	1.69	1.22
2:B:52:VAL:O	2:B:54:LEU:HD23	1.39	1.21
3:C:115:PRO:CB	3:C:152:PRO:HG3	1.70	1.21
1:A:206:PHE:O	1:A:209:PRO:HD3	1.41	1.20
3:C:118:LEU:CA	3:C:267:GLY:O	1.90	1.20
3:C:43:LYS:CD	3:C:49:SER:OG	1.90	1.20
2:B:114:MET:SD	2:B:115:VAL:N	2.16	1.19
1:A:51:LEU:CG	1:A:52:ASN:H	1.50	1.18
3:C:65:ASN:CA	3:C:66:LYS:C	2.07	1.18
2:B:74:ASP:OD2	2:B:77:LYS:CG	1.92	1.18
2:B:74:ASP:OD2	2:B:77:LYS:CB	1.89	1.18
2:B:182:CYS:HA	2:B:190:PHE:CZ	1.77	1.18
1:A:135:THR:OG1	1:A:136:GLU:HB2	1.44	1.18
1:A:218:SER:C	1:A:220:ALA:H	1.36	1.17
2:B:22:TYR:HB2	2:B:24:TRP:HA	1.24	1.17
3:C:152:PRO:O	3:C:154:TYR:N	1.77	1.17
2:B:23:LYS:HB3	2:B:24:TRP:HA	1.24	1.16
2:B:22:TYR:HB3	2:B:23:LYS:CB	1.76	1.16
1:A:28:PRO:CD	2:B:189:SER:OG	1.91	1.16
1:A:133:TYR:HB2	1:A:134:ASP:HB2	1.24	1.16
3:C:191:PRO:HD2	3:C:193:ILE:HD13	1.23	1.16
1:A:213:PRO:O	1:A:215:PRO:CD	1.93	1.15
2:B:121:THR:O	2:B:210:LEU:HD12	1.47	1.15
2:B:188:ASN:HB2	2:B:189:SER:HA	1.26	1.15
2:B:74:ASP:HA	2:B:75:MET:HB2	1.18	1.15
2:B:74:ASP:OD2	2:B:77:LYS:HG3	1.46	1.15
3:C:188:GLU:OE1	3:C:193:ILE:HD12	1.38	1.15
2:B:182:CYS:CB	2:B:190:PHE:CE2	2.28	1.14
1:A:109:TYR:CG	1:A:206:PHE:HZ	1.61	1.14
1:A:179:GLY:O	1:A:180:PHE:CG	2.00	1.14
1:A:28:PRO:HD3	2:B:189:SER:OG	1.41	1.14
1:A:213:PRO:O	1:A:215:PRO:N	1.82	1.14
1:A:109:TYR:HB2	1:A:206:PHE:CZ	1.83	1.13
3:C:98:VAL:HG13	3:C:99:ASP:HB2	1.20	1.13
2:B:22:TYR:CB	2:B:23:LYS:HB3	1.77	1.13
3:C:99:ASP:HB3	3:C:100:ASN:C	1.68	1.13
3:C:146:TRP:CA	3:C:153:ALA:O	1.97	1.12

Continued on next page...

Continued from previous page...

Atom-1	Atom-2	Interatomic distance (Å)	Clash overlap (Å)
3:C:43:LYS:HD2	3:C:49:SER:OG	1.41	1.12
3:C:50:ASN:O	3:C:52:LEU:N	1.81	1.12
1:A:28:PRO:HG3	2:B:145:ARG:HH22	0.99	1.12
2:B:22:TYR:HB3	2:B:23:LYS:HB3	1.13	1.11
2:B:52:VAL:O	2:B:54:LEU:N	1.82	1.11
3:C:60:THR:O	3:C:64:GLU:HG2	1.36	1.11
3:C:118:LEU:HA	3:C:267:GLY:O	0.95	1.11
1:A:104:SER:HA	1:A:106:PHE:CE1	1.86	1.11
2:B:42:ASN:O	2:B:43:VAL:HG23	1.47	1.11
2:B:120:VAL:CG1	2:B:121:THR:HA	1.80	1.11
2:B:114:MET:HB3	2:B:215:VAL:O	1.49	1.11
1:A:28:PRO:HG3	2:B:145:ARG:NH2	1.66	1.10
1:A:51:LEU:HG	1:A:52:ASN:H	0.98	1.10
1:A:172:VAL:CG2	1:A:175:ASP:OD1	1.98	1.10
1:A:109:TYR:CB	1:A:206:PHE:CZ	2.35	1.10
3:C:115:PRO:CA	3:C:152:PRO:CG	2.28	1.09
3:C:145:PHE:O	3:C:153:ALA:HB3	1.49	1.09
1:A:103:LEU:O	1:A:106:PHE:CE2	2.04	1.09
1:A:210:VAL:O	1:A:213:PRO:CD	2.01	1.09
1:A:90:ARG:HG3	1:A:182:MET:HE1	1.14	1.09
2:B:114:MET:HG3	2:B:215:VAL:HG23	1.28	1.08
3:C:55:ASN:HA	3:C:56:SER:HB2	1.34	1.08
1:A:215:PRO:HB3	3:C:203:SER:HA	1.13	1.08
3:C:65:ASN:HA	3:C:67:ASP:N	1.19	1.08
3:C:145:PHE:HB3	3:C:153:ALA:HB2	1.29	1.08
1:A:51:LEU:HD13	1:A:53:PHE:CD2	1.65	1.07
2:B:123:ASP:HB3	2:B:125:PHE:CE1	1.88	1.07
2:B:23:LYS:HG2	2:B:24:TRP:O	1.52	1.07
2:B:52:VAL:O	2:B:54:LEU:CD2	2.03	1.07
3:C:31:ILE:HG21	3:C:44:VAL:HG11	1.28	1.07
1:A:218:SER:O	1:A:220:ALA:N	1.89	1.06
3:C:43:LYS:CD	3:C:49:SER:CB	2.33	1.06
1:A:118:ILE:O	1:A:157:MET:HA	1.56	1.06
1:A:103:LEU:O	1:A:106:PHE:CE1	2.08	1.06
3:C:146:TRP:N	3:C:153:ALA:HB1	1.68	1.06
1:A:123:GLU:OE1	1:A:189:GLY:HA3	1.55	1.06
3:C:202:GLY:N	3:C:203:SER:OG	1.88	1.05
2:B:123:ASP:HA	2:B:124:GLN:O	1.57	1.05
3:C:151:LYS:HB3	3:C:152:PRO:HD2	1.34	1.05
3:C:192:VAL:CG1	3:C:194:ASP:OD1	2.03	1.04
1:A:206:PHE:CG	1:A:208:PHE:CD1	2.41	1.04

Continued on next page...

Continued from previous page...

Atom-1	Atom-2	Interatomic distance (Å)	Clash overlap (Å)
2:B:88:ASN:C	2:B:91:PRO:CB	2.14	1.04
3:C:115:PRO:HA	3:C:152:PRO:HD3	1.06	1.04
2:B:141:SER:O	2:B:239:LEU:HD12	1.57	1.04
1:A:75:ALA:HB2	1:A:200:SER:HB2	1.35	1.03
1:A:172:VAL:O	1:A:173:ARG:HB3	1.57	1.03
1:A:221:ALA:HB2	2:B:256:GLN:HB2	1.05	1.03
1:A:172:VAL:HG21	1:A:175:ASP:CG	1.79	1.03
2:B:116:HIS:O	2:B:117:ARG:HG2	0.86	1.03
2:B:120:VAL:HG13	2:B:121:THR:CA	1.88	1.03
1:A:66:THR:O	2:B:75:MET:CB	2.04	1.03
1:A:213:PRO:O	1:A:215:PRO:HD3	1.58	1.03
3:C:112:ASP:O	3:C:113:LYS:HD3	1.55	1.03
1:A:68:VAL:HG12	1:A:69:ASP:H	1.24	1.03
1:A:113:GLU:OE2	2:B:61:TYR:CZ	2.11	1.03
2:B:163:PHE:CE1	2:B:177:ALA:HB3	1.94	1.03
1:A:210:VAL:HG12	1:A:213:PRO:HG3	1.37	1.02
3:C:110:THR:HG22	3:C:111:GLY:C	1.80	1.02
3:C:136:ILE:HG23	3:C:137:THR:H	1.24	1.02
1:A:74:ARG:NH1	2:B:45:SER:OG	1.93	1.02
3:C:109:THR:HG22	3:C:113:LYS:HB2	1.42	1.01
3:C:141:LEU:HB3	3:C:239:ASP:HB3	1.38	1.01
3:C:115:PRO:HA	3:C:152:PRO:CG	1.87	1.01
3:C:43:LYS:HD2	3:C:49:SER:HB2	1.36	1.01
2:B:22:TYR:CB	2:B:24:TRP:HA	1.90	1.01
1:A:67:LYS:CD	2:B:73:ASP:OD2	2.07	1.01
2:B:40:MET:SD	2:B:42:ASN:ND2	2.34	1.01
3:C:60:THR:O	3:C:64:GLU:HG3	1.59	1.01
3:C:98:VAL:CG1	3:C:99:ASP:HB2	1.89	1.01
3:C:99:ASP:HB3	3:C:100:ASN:CA	1.91	1.00
3:C:115:PRO:CA	3:C:152:PRO:CD	2.37	1.00
1:A:114:ILE:HG22	1:A:115:ASN:N	1.75	1.00
3:C:130:TYR:CD1	3:C:134:TYR:CE2	2.50	1.00
1:A:104:SER:HA	1:A:106:PHE:HE1	1.21	1.00
2:B:182:CYS:HA	2:B:190:PHE:HZ	1.24	0.99
3:C:31:ILE:HG23	3:C:44:VAL:CB	1.93	0.99
3:C:48:ALA:O	3:C:50:ASN:N	1.95	0.99
1:A:51:LEU:HD11	1:A:53:PHE:CE2	1.97	0.99
1:A:89:TRP:NE1	1:A:90:ARG:HD2	1.76	0.99
3:C:192:VAL:CG1	3:C:194:ASP:CG	2.31	0.99
1:A:67:LYS:HG3	2:B:73:ASP:HB3	1.01	0.98
1:A:67:LYS:CG	2:B:73:ASP:HB3	1.92	0.98

Continued on next page...

Continued from previous page...

Atom-1	Atom-2	Interatomic distance (Å)	Clash overlap (Å)
1:A:212:ALA:HB2	2:B:78:ILE:HD11	1.45	0.98
1:A:206:PHE:C	1:A:208:PHE:HA	1.84	0.98
2:B:141:SER:O	2:B:239:LEU:CD1	2.12	0.98
1:A:51:LEU:HD12	1:A:52:ASN:N	1.78	0.98
3:C:39:GLU:HA	3:C:40:ILE:HB	1.45	0.98
1:A:133:TYR:OH	1:A:161:VAL:CG1	2.12	0.97
1:A:206:PHE:O	1:A:209:PRO:CD	2.12	0.97
1:A:90:ARG:CG	1:A:182:MET:SD	2.49	0.97
1:A:51:LEU:CG	1:A:52:ASN:N	2.25	0.97
2:B:114:MET:CG	2:B:215:VAL:HG23	1.94	0.97
1:A:174:HIS:CD2	1:A:214:LYS:HZ1	1.55	0.97
2:B:88:ASN:CA	2:B:91:PRO:HB2	1.95	0.97
3:C:145:PHE:CB	3:C:153:ALA:HB2	1.93	0.96
1:A:133:TYR:CB	1:A:134:ASP:HB2	1.96	0.96
3:C:152:PRO:C	3:C:154:TYR:H	1.66	0.96
1:A:68:VAL:HG23	2:B:73:ASP:HA	1.43	0.96
1:A:206:PHE:CG	1:A:208:PHE:HD1	1.71	0.96
2:B:74:ASP:CG	2:B:77:LYS:H	1.69	0.96
3:C:42:THR:HB	3:C:44:VAL:N	1.80	0.96
1:A:167:LYS:HB3	1:A:169:LEU:HD11	1.47	0.96
2:B:23:LYS:CB	2:B:24:TRP:HA	1.96	0.95
1:A:134:ASP:HA	1:A:135:THR:HG22	1.46	0.95
1:A:90:ARG:HG3	1:A:182:MET:CE	1.86	0.95
1:A:218:SER:C	1:A:220:ALA:N	2.09	0.95
2:B:42:ASN:O	2:B:43:VAL:CG2	2.15	0.95
1:A:221:ALA:HB2	2:B:256:GLN:CB	1.97	0.94
1:A:172:VAL:HG11	1:A:175:ASP:OD1	1.67	0.94
2:B:56:GLY:HA2	2:B:57:GLU:HG2	0.94	0.94
3:C:196:ARG:HH11	3:C:196:ARG:HB2	1.30	0.94
1:A:51:LEU:HD13	1:A:53:PHE:HD2	0.77	0.94
2:B:74:ASP:OD2	2:B:77:LYS:HB2	1.64	0.94
2:B:90:THR:N	2:B:91:PRO:HA	1.79	0.94
3:C:43:LYS:HD3	3:C:49:SER:OG	1.68	0.93
1:A:68:VAL:CG2	2:B:73:ASP:HA	1.98	0.93
2:B:88:ASN:O	2:B:91:PRO:HB3	0.75	0.93
2:B:23:LYS:HG2	2:B:24:TRP:C	1.88	0.93
2:B:120:VAL:HG13	2:B:121:THR:HA	0.94	0.93
1:A:115:ASN:HB3	1:A:200:SER:O	1.69	0.93
3:C:115:PRO:C	3:C:152:PRO:HG3	1.88	0.93
3:C:115:PRO:CB	3:C:152:PRO:CG	2.46	0.92
3:C:55:ASN:CA	3:C:56:SER:HB2	1.99	0.92

Continued on next page...

Continued from previous page...

Atom-1	Atom-2	Interatomic distance (Å)	Clash overlap (Å)
1:A:28:PRO:CD	2:B:189:SER:HG	1.76	0.92
3:C:115:PRO:HB3	3:C:152:PRO:HB3	1.52	0.92
2:B:88:ASN:CA	2:B:91:PRO:CB	2.47	0.92
2:B:114:MET:CB	2:B:215:VAL:O	2.17	0.92
1:A:51:LEU:HG	1:A:52:ASN:N	1.84	0.92
1:A:51:LEU:CD1	1:A:52:ASN:N	2.33	0.91
1:A:133:TYR:HH	1:A:161:VAL:HG11	1.28	0.91
1:A:113:GLU:N	1:A:113:GLU:OE1	2.03	0.91
3:C:98:VAL:HG13	3:C:100:ASN:HA	1.48	0.91
3:C:99:ASP:CB	3:C:100:ASN:CA	2.48	0.91
3:C:61:ALA:HA	3:C:64:GLU:CD	1.91	0.91
1:A:162:PRO:O	1:A:163:PHE:HB2	1.71	0.91
3:C:115:PRO:O	3:C:152:PRO:CG	2.19	0.91
3:C:145:PHE:HB3	3:C:153:ALA:CB	2.00	0.91
3:C:203:SER:C	3:C:205:THR:H	1.73	0.90
3:C:110:THR:CG2	3:C:111:GLY:CA	2.10	0.90
2:B:98:ASP:HA	2:B:99:LYS:HB3	1.52	0.90
3:C:42:THR:H	3:C:43:LYS:HA	1.35	0.90
1:A:104:SER:CA	1:A:106:PHE:CE1	2.54	0.90
3:C:99:ASP:CB	3:C:100:ASN:HA	1.99	0.90
3:C:151:LYS:HA	3:C:151:LYS:CE	2.01	0.90
2:B:105:TRP:CZ3	2:B:106:ALA:O	2.24	0.90
2:B:114:MET:HG3	2:B:215:VAL:O	1.71	0.90
2:B:188:ASN:CB	2:B:189:SER:HA	1.99	0.90
3:C:115:PRO:HB2	3:C:152:PRO:HG3	1.52	0.90
1:A:109:TYR:CG	1:A:206:PHE:CE1	2.60	0.89
1:A:118:ILE:O	1:A:157:MET:CA	2.19	0.89
2:B:182:CYS:CA	2:B:190:PHE:CZ	2.55	0.89
1:A:110:PHE:HB3	1:A:173:ARG:HB2	1.55	0.89
3:C:193:ILE:HG22	3:C:196:ARG:NH2	1.87	0.89
1:A:96:PRO:O	1:A:177:ALA:CB	2.19	0.89
2:B:123:ASP:HA	2:B:124:GLN:C	1.92	0.89
2:B:56:GLY:HA2	2:B:57:GLU:CB	2.02	0.89
1:A:134:ASP:HA	1:A:135:THR:CG2	2.03	0.88
2:B:163:PHE:CE1	2:B:177:ALA:CB	2.56	0.88
3:C:145:PHE:CB	3:C:153:ALA:CB	2.51	0.88
1:A:89:TRP:HE1	1:A:90:ARG:HD2	1.35	0.88
1:A:29:ASN:ND2	3:C:211:LEU:HB3	1.88	0.88
2:B:51:SER:C	2:B:54:LEU:HD21	1.94	0.88
3:C:151:LYS:HB3	3:C:152:PRO:CD	2.03	0.88
1:A:221:ALA:CB	2:B:256:GLN:HB2	1.99	0.87

Continued on next page...

Continued from previous page...

Atom-1	Atom-2	Interatomic distance (Å)	Clash overlap (Å)
3:C:112:ASP:O	3:C:113:LYS:CD	2.22	0.87
1:A:215:PRO:HB3	3:C:203:SER:CA	2.02	0.87
2:B:127:ASN:HD21	2:B:238:ARG:HH22	1.22	0.87
3:C:104:MET:O	3:C:106:TYR:N	2.07	0.87
1:A:139:ARG:HH11	1:A:141:THR:HG22	1.40	0.87
1:A:89:TRP:CD1	1:A:90:ARG:HD2	2.09	0.86
3:C:60:THR:O	3:C:64:GLU:CD	2.14	0.86
1:A:207:PHE:HA	2:B:71:ARG:HA	1.57	0.86
3:C:28:ASN:HA	3:C:31:ILE:HD12	1.57	0.86
1:A:103:LEU:CB	1:A:106:PHE:CZ	2.56	0.86
2:B:179:TYR:O	2:B:180:THR:OG1	1.93	0.86
1:A:166:ASN:O	1:A:167:LYS:C	2.11	0.86
2:B:40:MET:HG3	2:B:43:VAL:O	1.73	0.86
3:C:31:ILE:HG22	3:C:44:VAL:HG11	1.51	0.86
1:A:212:ALA:HB2	2:B:78:ILE:CD1	2.06	0.86
2:B:43:VAL:HG12	2:B:44:LEU:H	1.38	0.86
1:A:114:ILE:HG22	1:A:115:ASN:H	1.38	0.86
1:A:168:PRO:O	1:A:170:ARG:N	2.08	0.86
2:B:58:ARG:HG2	2:B:59:ALA:H	1.37	0.86
3:C:116:SER:OG	3:C:269:LEU:O	1.93	0.86
3:C:151:LYS:HA	3:C:151:LYS:HE3	1.57	0.86
1:A:170:ARG:HD3	1:A:171:THR:H	1.38	0.86
2:B:24:TRP:O	2:B:26:ARG:N	2.07	0.86
3:C:99:ASP:HB3	3:C:100:ASN:O	1.74	0.85
3:C:192:VAL:O	3:C:194:ASP:OD1	1.93	0.85
2:B:110:ALA:O	2:B:112:GLN:OE1	1.94	0.85
1:A:206:PHE:O	1:A:208:PHE:HA	1.76	0.85
3:C:145:PHE:O	3:C:153:ALA:HB1	1.58	0.85
1:A:64:SER:HA	1:A:67:LYS:HB3	1.59	0.85
1:A:68:VAL:HG23	2:B:73:ASP:CA	2.07	0.85
1:A:205:ASN:ND2	2:B:63:PRO:HG3	1.91	0.85
1:A:103:LEU:HB3	1:A:106:PHE:HZ	1.42	0.85
3:C:98:VAL:HA	3:C:99:ASP:OD1	1.75	0.85
3:C:98:VAL:HG22	3:C:99:ASP:CG	1.97	0.85
3:C:207:LEU:HD22	3:C:208:PRO:HD2	1.58	0.85
2:B:74:ASP:OD2	2:B:77:LYS:N	2.11	0.84
3:C:141:LEU:HD13	3:C:239:ASP:HB2	1.58	0.84
1:A:114:ILE:CG2	1:A:115:ASN:H	1.90	0.84
1:A:103:LEU:C	1:A:106:PHE:CE1	2.47	0.84
2:B:112:GLN:OE1	2:B:112:GLN:N	2.10	0.84
2:B:92:SER:HB3	2:B:98:ASP:O	1.77	0.84

Continued on next page...

Continued from previous page...

Atom-1	Atom-2	Interatomic distance (Å)	Clash overlap (Å)
1:A:109:TYR:CB	1:A:206:PHE:CE1	2.61	0.84
2:B:114:MET:HG3	2:B:215:VAL:CG2	2.08	0.84
3:C:115:PRO:CA	3:C:152:PRO:HD3	1.99	0.83
3:C:196:ARG:HB2	3:C:196:ARG:NH1	1.93	0.83
1:A:103:LEU:HB3	1:A:106:PHE:CZ	2.13	0.83
3:C:118:LEU:HD23	3:C:268:SER:HB3	1.58	0.83
3:C:193:ILE:HG22	3:C:196:ARG:CZ	2.08	0.83
1:A:205:ASN:O	1:A:207:PHE:N	2.10	0.83
2:B:37:THR:H	2:B:38:MET:HB2	1.44	0.83
2:B:163:PHE:HE1	2:B:177:ALA:HB3	1.40	0.83
1:A:168:PRO:C	1:A:169:LEU:HD13	1.99	0.83
3:C:98:VAL:HG13	3:C:99:ASP:CB	2.07	0.83
1:A:168:PRO:O	1:A:169:LEU:HD22	1.77	0.83
1:A:27:SER:O	1:A:30:GLU:HB2	1.79	0.83
3:C:55:ASN:HA	3:C:56:SER:CB	2.08	0.83
1:A:174:HIS:HD2	1:A:214:LYS:HZ1	0.85	0.82
3:C:38:GLY:O	3:C:40:ILE:HA	1.78	0.82
3:C:65:ASN:OD1	3:C:66:LYS:O	1.97	0.82
1:A:117:HIS:CE1	2:B:44:LEU:CD2	2.21	0.82
1:A:66:THR:HG23	2:B:76:ILE:HG23	1.62	0.82
1:A:100:HIS:N	1:A:104:SER:OG	2.10	0.82
2:B:51:SER:O	2:B:54:LEU:HD21	1.78	0.82
3:C:61:ALA:O	3:C:67:ASP:OD1	1.98	0.82
1:A:88:THR:O	1:A:89:TRP:CB	2.27	0.82
1:A:109:TYR:HD2	1:A:206:PHE:HZ	0.85	0.82
3:C:43:LYS:HD2	3:C:49:SER:HB3	1.60	0.82
1:A:114:ILE:CG2	1:A:115:ASN:N	2.43	0.82
1:A:109:TYR:HD2	1:A:206:PHE:CZ	1.62	0.81
1:A:123:GLU:HB3	1:A:126:PHE:HB3	1.60	0.81
1:A:67:LYS:CG	2:B:73:ASP:CB	2.54	0.81
2:B:165:ASN:HB3	2:B:166:CYS:HA	1.63	0.81
1:A:109:TYR:HE1	1:A:212:ALA:HA	1.44	0.81
2:B:74:ASP:OD1	2:B:76:ILE:CG1	2.29	0.81
1:A:172:VAL:CG1	1:A:175:ASP:OD1	2.29	0.81
1:A:202:ARG:NE	2:B:51:SER:OG	2.12	0.81
2:B:114:MET:HB2	2:B:217:VAL:H	1.45	0.81
2:B:122:LEU:HD13	2:B:132:MET:HG3	1.63	0.81
2:B:158:LEU:O	2:B:182:CYS:HB3	1.81	0.81
2:B:90:THR:HG23	2:B:100:TYR:CE1	2.14	0.81
1:A:134:ASP:CA	1:A:135:THR:HG22	2.10	0.81
1:A:67:LYS:CG	2:B:73:ASP:CG	2.50	0.80

Continued on next page...

Continued from previous page...

Atom-1	Atom-2	Interatomic distance (Å)	Clash overlap (Å)
1:A:110:PHE:O	1:A:170:ARG:HD2	1.80	0.80
3:C:61:ALA:HA	3:C:64:GLU:OE1	1.80	0.80
1:A:89:TRP:O	1:A:182:MET:HE3	1.81	0.80
1:A:110:PHE:HD2	1:A:173:ARG:HD2	1.47	0.80
3:C:111:GLY:HA2	3:C:115:PRO:CD	2.11	0.80
1:A:88:THR:O	1:A:89:TRP:HB3	1.78	0.80
2:B:88:ASN:HA	2:B:91:PRO:HB2	1.61	0.80
2:B:182:CYS:HB2	2:B:190:PHE:CE2	2.13	0.80
1:A:179:GLY:O	1:A:180:PHE:CD2	2.34	0.80
2:B:74:ASP:HA	2:B:75:MET:CB	2.06	0.80
2:B:166:CYS:SG	2:B:167:THR:N	2.55	0.80
3:C:61:ALA:HA	3:C:64:GLU:CG	2.12	0.80
2:B:37:THR:HA	2:B:38:MET:C	2.02	0.80
2:B:37:THR:HA	2:B:40:MET:H	1.47	0.80
2:B:114:MET:CG	2:B:215:VAL:O	2.29	0.80
3:C:191:PRO:HD2	3:C:193:ILE:CD1	2.09	0.80
3:C:101:PHE:N	3:C:102:HIS:HA	1.94	0.79
3:C:56:SER:C	3:C:58:ALA:H	1.85	0.79
1:A:28:PRO:HD2	2:B:188:ASN:OD1	1.81	0.79
1:A:28:PRO:HD2	2:B:189:SER:HG	1.47	0.79
1:A:29:ASN:ND2	3:C:211:LEU:CB	2.33	0.79
1:A:133:TYR:HA	1:A:134:ASP:CG	2.03	0.79
2:B:56:GLY:CA	2:B:57:GLU:CG	2.43	0.79
3:C:115:PRO:O	3:C:152:PRO:HG3	1.80	0.79
3:C:50:ASN:C	3:C:52:LEU:H	1.86	0.79
1:A:172:VAL:CB	1:A:175:ASP:OD1	2.31	0.79
1:A:167:LYS:CB	1:A:169:LEU:HD11	2.13	0.78
2:B:43:VAL:C	2:B:44:LEU:HD22	2.03	0.78
2:B:172:LEU:O	2:B:175:ASP:N	2.16	0.78
1:A:112:GLY:C	1:A:113:GLU:OE1	2.22	0.78
1:A:140:LYS:H	1:A:141:THR:HB	1.49	0.78
2:B:102:TYR:HE2	2:B:116:HIS:HA	1.48	0.78
2:B:118:ASN:HB3	2:B:120:VAL:HA	1.65	0.78
1:A:213:PRO:HB3	3:C:207:LEU:HD21	1.64	0.78
2:B:37:THR:N	2:B:38:MET:HB2	1.97	0.78
2:B:88:ASN:HB3	2:B:91:PRO:CB	2.13	0.78
3:C:98:VAL:CB	3:C:99:ASP:HB2	2.14	0.78
3:C:112:ASP:O	3:C:113:LYS:CG	2.31	0.78
2:B:56:GLY:CA	2:B:57:GLU:CB	2.61	0.78
3:C:118:LEU:CD2	3:C:268:SER:HB3	2.14	0.78
1:A:172:VAL:HG21	1:A:175:ASP:CB	2.15	0.77

Continued on next page...

Continued from previous page...

Atom-1	Atom-2	Interatomic distance (Å)	Clash overlap (Å)
3:C:233:VAL:HG21	3:C:240:LEU:HD21	1.65	0.77
2:B:105:TRP:CE3	2:B:106:ALA:O	2.36	0.77
1:A:215:PRO:HG2	3:C:204:LEU:N	1.99	0.77
2:B:74:ASP:CA	2:B:75:MET:HB2	2.08	0.77
1:A:219:ARG:HB2	3:C:199:LEU:HD23	1.67	0.77
2:B:90:THR:HG23	2:B:100:TYR:HE1	1.50	0.77
3:C:61:ALA:CA	3:C:64:GLU:HG3	2.13	0.77
3:C:65:ASN:HA	3:C:66:LYS:O	1.85	0.77
1:A:207:PHE:O	2:B:72:PHE:N	2.15	0.77
2:B:58:ARG:O	2:B:59:ALA:O	2.03	0.77
2:B:74:ASP:OD1	2:B:76:ILE:HG12	1.85	0.77
3:C:28:ASN:HD21	3:C:52:LEU:HB3	1.49	0.77
1:A:97:LYS:NZ	1:A:177:ALA:O	2.19	0.76
1:A:85:ASN:HD21	1:A:192:ARG:HA	1.51	0.76
3:C:61:ALA:HA	3:C:64:GLU:HG3	1.66	0.76
1:A:89:TRP:O	1:A:90:ARG:HG3	1.84	0.76
2:B:182:CYS:HB2	2:B:190:PHE:HE2	1.43	0.76
3:C:48:ALA:C	3:C:50:ASN:H	1.88	0.76
1:A:51:LEU:CD1	1:A:53:PHE:CE2	2.62	0.76
3:C:69:VAL:O	3:C:81:THR:O	2.04	0.76
1:A:173:ARG:HH22	1:A:214:LYS:H	1.33	0.76
1:A:167:LYS:N	1:A:167:LYS:HE3	2.02	0.76
2:B:88:ASN:CB	2:B:91:PRO:HB2	2.15	0.75
3:C:146:TRP:O	3:C:153:ALA:O	2.04	0.75
3:C:207:LEU:HD23	3:C:208:PRO:HD3	1.68	0.75
1:A:69:ASP:OD1	1:A:70:ASN:N	2.19	0.75
3:C:62:GLN:HB3	3:C:63:PRO:CD	2.16	0.75
3:C:186:VAL:HG21	3:C:204:LEU:HD21	1.68	0.75
1:A:135:THR:HG1	1:A:136:GLU:HB2	1.48	0.75
3:C:40:ILE:HG13	3:C:41:ILE:HG23	1.68	0.75
2:B:116:HIS:C	2:B:117:ARG:HG2	2.00	0.75
3:C:193:ILE:CG2	3:C:196:ARG:NH2	2.49	0.75
2:B:44:LEU:O	2:B:45:SER:OG	2.04	0.75
2:B:58:ARG:CG	2:B:59:ALA:H	1.99	0.75
3:C:42:THR:N	3:C:43:LYS:HA	1.98	0.75
3:C:99:ASP:CB	3:C:100:ASN:O	2.35	0.75
1:A:215:PRO:CB	3:C:203:SER:CA	2.60	0.75
3:C:35:GLU:C	3:C:37:GLY:H	1.89	0.75
3:C:187:TYR:CE2	3:C:224:ILE:HG21	2.22	0.75
1:A:118:ILE:O	1:A:157:MET:CB	2.35	0.75
1:A:165:SER:HA	1:A:166:ASN:C	2.06	0.75

Continued on next page...

Continued from previous page...

Atom-1	Atom-2	Interatomic distance (Å)	Clash overlap (Å)
1:A:171:THR:O	1:A:173:ARG:N	2.19	0.75
3:C:207:LEU:CD2	3:C:208:PRO:HD2	2.16	0.75
2:B:68:SER:HB3	2:B:70:SER:OG	1.87	0.74
3:C:185:VAL:HG22	3:C:245:VAL:HG22	1.67	0.74
1:A:215:PRO:CG	3:C:203:SER:HA	2.17	0.74
1:A:108:ALA:HB3	1:A:109:TYR:CE1	2.22	0.74
1:A:212:ALA:CB	2:B:78:ILE:HD11	2.16	0.74
3:C:38:GLY:O	3:C:41:ILE:HG22	1.87	0.74
1:A:51:LEU:CD1	1:A:52:ASN:H	1.94	0.74
2:B:37:THR:HA	2:B:39:ASN:N	2.03	0.74
3:C:52:LEU:HD12	3:C:52:LEU:O	1.88	0.74
3:C:135:LYS:HG3	3:C:136:ILE:N	2.01	0.74
2:B:42:ASN:O	2:B:43:VAL:CB	2.36	0.74
1:A:148:VAL:O	1:A:149:ILE:HG12	1.88	0.73
1:A:117:HIS:HA	1:A:157:MET:O	1.88	0.73
1:A:100:HIS:N	1:A:101:GLY:HA2	2.04	0.73
2:B:182:CYS:CA	2:B:190:PHE:CE2	2.71	0.73
3:C:145:PHE:CA	3:C:153:ALA:CB	2.65	0.73
3:C:146:TRP:HA	3:C:153:ALA:C	2.08	0.73
1:A:169:LEU:HD13	1:A:169:LEU:N	2.04	0.73
2:B:162:PHE:HA	2:B:212:LEU:O	1.89	0.73
3:C:35:GLU:O	3:C:37:GLY:N	2.21	0.73
1:A:206:PHE:O	1:A:207:PHE:HB2	1.87	0.73
2:B:22:TYR:HB2	2:B:24:TRP:CB	2.18	0.73
2:B:114:MET:HB3	2:B:216:GLU:HA	1.70	0.73
1:A:133:TYR:HA	1:A:134:ASP:OD2	1.87	0.73
2:B:92:SER:HA	2:B:95:SER:HB3	1.71	0.73
3:C:194:ASP:OD1	3:C:194:ASP:N	2.22	0.73
2:B:37:THR:OG1	2:B:40:MET:O	2.05	0.73
3:C:135:LYS:HG3	3:C:136:ILE:H	1.54	0.73
3:C:138:THR:HG22	3:C:244:ARG:HG2	1.69	0.73
2:B:43:VAL:HG12	2:B:44:LEU:N	2.04	0.73
1:A:28:PRO:CG	2:B:145:ARG:NH2	2.51	0.72
3:C:70:GLN:N	3:C:70:GLN:OE1	2.23	0.72
3:C:141:LEU:CD1	3:C:239:ASP:OD2	2.37	0.72
1:A:67:LYS:HG3	2:B:73:ASP:CG	2.08	0.72
1:A:172:VAL:O	1:A:173:ARG:CB	2.34	0.72
3:C:24:GLU:OE1	3:C:56:SER:OG	2.07	0.72
1:A:118:ILE:N	1:A:157:MET:HB2	2.05	0.72
2:B:22:TYR:CB	2:B:23:LYS:CB	2.53	0.72
3:C:50:ASN:C	3:C:52:LEU:N	2.42	0.72

Continued on next page...

Continued from previous page...

Atom-1	Atom-2	Interatomic distance (Å)	Clash overlap (Å)
3:C:202:GLY:HA2	3:C:203:SER:O	1.90	0.72
1:A:207:PHE:HB2	1:A:208:PHE:C	2.10	0.72
3:C:42:THR:HB	3:C:44:VAL:H	1.51	0.72
1:A:110:PHE:CD2	1:A:173:ARG:HD2	2.25	0.72
3:C:146:TRP:C	3:C:153:ALA:O	2.27	0.71
2:B:75:MET:O	2:B:78:ILE:HG22	1.90	0.71
2:B:86:SER:OG	2:B:89:THR:OG1	2.02	0.71
2:B:92:SER:HA	2:B:95:SER:CB	2.20	0.71
2:B:123:ASP:HB3	2:B:125:PHE:CD1	2.25	0.71
1:A:45:GLU:HB2	1:A:46:LYS:HA	1.72	0.71
1:A:89:TRP:O	1:A:182:MET:CE	2.38	0.71
3:C:191:PRO:O	3:C:194:ASP:OD1	2.08	0.71
2:B:56:GLY:C	2:B:57:GLU:HG2	2.11	0.71
2:B:22:TYR:HB2	2:B:24:TRP:N	2.06	0.70
2:B:194:ILE:HD12	2:B:195:PRO:HD2	1.73	0.70
2:B:206:HIS:CG	2:B:207:GLY:H	2.09	0.70
1:A:103:LEU:O	1:A:106:PHE:CD2	2.44	0.70
1:A:167:LYS:H	1:A:167:LYS:CD	2.03	0.70
3:C:39:GLU:O	3:C:42:THR:HG22	1.91	0.70
1:A:90:ARG:HB3	1:A:91:GLN:C	2.11	0.70
2:B:42:ASN:C	2:B:43:VAL:HG23	2.11	0.70
2:B:58:ARG:H	2:B:58:ARG:HD2	1.55	0.70
3:C:37:GLY:O	3:C:42:THR:HG23	1.92	0.70
1:A:210:VAL:HG12	1:A:213:PRO:CG	2.19	0.70
3:C:110:THR:HB	3:C:111:GLY:HA2	1.71	0.70
3:C:136:ILE:HG23	3:C:137:THR:N	2.04	0.70
1:A:167:LYS:HE3	1:A:167:LYS:H	1.57	0.70
3:C:41:ILE:H	3:C:41:ILE:HD12	1.57	0.70
3:C:110:THR:CB	3:C:111:GLY:CA	2.49	0.70
1:A:26:ILE:HG22	1:A:27:SER:N	2.06	0.69
1:A:28:PRO:CG	2:B:189:SER:OG	2.40	0.69
1:A:110:PHE:HD1	1:A:170:ARG:HD2	1.57	0.69
1:A:167:LYS:H	1:A:167:LYS:HD2	1.57	0.69
2:B:22:TYR:HB2	2:B:23:LYS:HB3	1.74	0.69
2:B:79:ALA:O	2:B:81:LEU:N	2.25	0.69
2:B:123:ASP:HB3	2:B:125:PHE:HE1	1.54	0.69
3:C:130:TYR:CE1	3:C:134:TYR:CE2	2.80	0.69
2:B:109:VAL:HG22	2:B:110:ALA:H	1.57	0.69
2:B:110:ALA:C	2:B:112:GLN:OE1	2.30	0.69
3:C:55:ASN:N	3:C:56:SER:HB2	2.08	0.69
1:A:210:VAL:O	1:A:213:PRO:CG	2.41	0.69

Continued on next page...

Continued from previous page...

Atom-1	Atom-2	Interatomic distance (Å)	Clash overlap (Å)
1:A:219:ARG:C	1:A:221:ALA:H	1.93	0.69
2:B:112:GLN:C	2:B:113:ASN:ND2	2.46	0.69
2:B:182:CYS:HA	2:B:190:PHE:CE2	2.28	0.69
3:C:191:PRO:CD	3:C:193:ILE:HD13	2.14	0.69
2:B:88:ASN:CB	2:B:91:PRO:CB	2.69	0.69
3:C:99:ASP:HB2	3:C:100:ASN:HA	1.74	0.69
1:A:175:ASP:CB	1:A:176:SER:HA	2.21	0.68
3:C:99:ASP:CB	3:C:100:ASN:C	2.56	0.68
2:B:182:CYS:CA	2:B:190:PHE:HZ	1.98	0.68
3:C:141:LEU:HD13	3:C:239:ASP:CB	2.22	0.68
1:A:67:LYS:HB2	1:A:67:LYS:NZ	2.07	0.68
1:A:106:PHE:O	1:A:107:PHE:HB3	1.92	0.68
1:A:109:TYR:CE1	1:A:212:ALA:HA	2.27	0.68
1:A:123:GLU:OE2	1:A:189:GLY:O	2.12	0.68
1:A:91:GLN:H	1:A:91:GLN:CD	1.94	0.68
2:B:74:ASP:OD2	2:B:77:LYS:CA	2.40	0.68
3:C:101:PHE:N	3:C:102:HIS:CA	2.56	0.68
3:C:65:ASN:C	3:C:67:ASP:N	2.46	0.68
1:A:112:GLY:HA2	1:A:113:GLU:OE1	1.93	0.68
1:A:120:TYR:CE2	1:A:122:ALA:HB3	2.28	0.68
1:A:179:GLY:O	1:A:180:PHE:CD1	2.47	0.68
2:B:23:LYS:CB	2:B:24:TRP:CA	2.72	0.68
3:C:93:PRO:HB2	3:C:95:PHE:HD2	1.59	0.68
2:B:117:ARG:NH1	2:B:169:ASP:OD2	2.26	0.68
2:B:165:ASN:H	2:B:166:CYS:HB2	1.59	0.68
3:C:24:GLU:HB3	3:C:52:LEU:HA	1.74	0.68
3:C:192:VAL:C	3:C:194:ASP:OD1	2.33	0.68
3:C:118:LEU:HD23	3:C:267:GLY:O	1.94	0.68
1:A:67:LYS:HG2	1:A:68:VAL:N	2.07	0.67
1:A:213:PRO:O	1:A:214:LYS:C	2.31	0.67
2:B:114:MET:CB	2:B:216:GLU:HA	2.24	0.67
1:A:96:PRO:C	1:A:177:ALA:HB2	2.13	0.67
1:A:155:GLU:HG3	1:A:156:GLN:H	1.60	0.67
2:B:119:VAL:N	2:B:120:VAL:HA	2.09	0.67
1:A:103:LEU:O	1:A:106:PHE:CD1	2.47	0.67
1:A:120:TYR:CZ	1:A:122:ALA:CB	2.78	0.67
1:A:131:HIS:ND1	1:A:182:MET:O	2.28	0.67
1:A:164:TYR:CD1	1:A:166:ASN:ND2	2.62	0.67
3:C:39:GLU:HA	3:C:40:ILE:CB	2.17	0.67
3:C:52:LEU:HD12	3:C:52:LEU:C	2.15	0.67
1:A:66:THR:O	2:B:75:MET:HB3	1.90	0.67

Continued on next page...

Continued from previous page...

Atom-1	Atom-2	Interatomic distance (Å)	Clash overlap (Å)
3:C:207:LEU:CD2	3:C:208:PRO:CD	2.72	0.67
1:A:112:GLY:CA	1:A:113:GLU:OE1	2.43	0.66
2:B:58:ARG:O	2:B:59:ALA:C	2.32	0.66
3:C:54:PRO:C	3:C:56:SER:HA	2.15	0.66
3:C:141:LEU:HD12	3:C:239:ASP:OD2	1.96	0.66
3:C:115:PRO:HB3	3:C:152:PRO:CB	2.23	0.66
2:B:34:GLY:O	2:B:36:GLY:N	2.27	0.66
1:A:60:ILE:N	1:A:61:PHE:HA	2.11	0.66
2:B:52:VAL:O	2:B:54:LEU:CG	2.44	0.66
1:A:206:PHE:CD2	1:A:208:PHE:CD1	2.84	0.66
2:B:114:MET:HB2	2:B:217:VAL:N	2.11	0.66
1:A:68:VAL:HG12	1:A:69:ASP:N	2.04	0.66
1:A:116:ILE:HD13	1:A:133:TYR:HE2	1.61	0.65
2:B:30:ASP:HB2	2:B:31:ILE:HA	1.77	0.65
2:B:41:ALA:H	2:B:43:VAL:H	1.44	0.65
3:C:136:ILE:HG21	3:C:245:VAL:HG12	1.78	0.65
2:B:58:ARG:H	2:B:58:ARG:NH1	1.94	0.65
3:C:207:LEU:HD23	3:C:208:PRO:CD	2.26	0.65
2:B:251:SER:HB2	2:B:252:LEU:HA	1.77	0.65
1:A:26:ILE:HG22	1:A:27:SER:H	1.62	0.65
1:A:166:ASN:O	1:A:167:LYS:O	2.14	0.65
2:B:110:ALA:O	2:B:112:GLN:N	2.30	0.65
1:A:110:PHE:CD1	1:A:170:ARG:HD2	2.32	0.65
1:A:210:VAL:CG1	1:A:213:PRO:HG3	2.20	0.65
2:B:58:ARG:HG2	2:B:59:ALA:N	2.12	0.65
2:B:102:TYR:CE2	2:B:116:HIS:HA	2.30	0.65
1:A:117:HIS:HE1	2:B:44:LEU:HD21	0.50	0.65
1:A:167:LYS:H	1:A:167:LYS:CE	2.09	0.65
3:C:100:ASN:CB	3:C:101:PHE:HA	2.27	0.65
3:C:60:THR:C	3:C:64:GLU:HG3	2.18	0.64
1:A:67:LYS:CG	2:B:73:ASP:OD2	2.45	0.64
2:B:114:MET:CG	2:B:115:VAL:H	2.09	0.64
3:C:35:GLU:C	3:C:37:GLY:N	2.48	0.64
3:C:119:ILE:O	3:C:266:MET:HA	1.98	0.64
1:A:219:ARG:HA	1:A:219:ARG:NE	2.11	0.64
1:A:51:LEU:HD12	1:A:51:LEU:C	2.16	0.64
1:A:174:HIS:CG	1:A:214:LYS:HZ2	2.06	0.64
2:B:92:SER:C	2:B:95:SER:HB3	2.18	0.64
3:C:151:LYS:CB	3:C:152:PRO:HD2	2.21	0.64
3:C:195:SER:C	3:C:197:GLN:H	2.00	0.64
3:C:140:GLU:HB3	3:C:144:SER:HB2	1.77	0.64

Continued on next page...

Continued from previous page...

Atom-1	Atom-2	Interatomic distance (Å)	Clash overlap (Å)
3:C:207:LEU:O	3:C:209:HIS:N	2.31	0.64
1:A:82:ASP:OD1	1:A:83:PHE:N	2.23	0.64
3:C:118:LEU:HD23	3:C:267:GLY:C	2.17	0.64
3:C:161:ALA:HB2	3:C:278:ARG:HD3	1.80	0.64
3:C:233:VAL:HG11	3:C:240:LEU:CD2	2.28	0.64
1:A:205:ASN:HD22	2:B:63:PRO:HG3	1.62	0.64
1:A:163:PHE:CE1	1:A:166:ASN:HB3	2.32	0.64
1:A:108:ALA:O	1:A:173:ARG:NE	2.31	0.64
1:A:219:ARG:NH2	2:B:256:GLN:HB3	2.13	0.64
3:C:154:TYR:O	3:C:158:LYS:HB3	1.98	0.64
1:A:90:ARG:HB2	1:A:91:GLN:HA	1.79	0.63
2:B:74:ASP:OD1	2:B:76:ILE:HG13	1.98	0.63
2:B:88:ASN:CA	2:B:91:PRO:HB3	2.20	0.63
3:C:115:PRO:CB	3:C:152:PRO:CB	2.77	0.63
1:A:68:VAL:HB	2:B:73:ASP:OD1	1.98	0.63
2:B:41:ALA:HA	2:B:43:VAL:N	2.12	0.63
3:C:109:THR:CG2	3:C:113:LYS:HB2	2.25	0.63
3:C:185:VAL:HB	3:C:210:VAL:HG13	1.81	0.63
1:A:165:SER:HA	1:A:167:LYS:N	2.14	0.63
2:B:52:VAL:C	2:B:54:LEU:H	1.97	0.63
1:A:133:TYR:HB2	1:A:134:ASP:CB	2.15	0.63
2:B:33:GLU:HB3	2:B:34:GLY:C	2.19	0.63
1:A:43:GLY:HA2	1:A:50:PHE:CD2	2.33	0.63
1:A:57:ASN:OD1	2:B:244:LYS:NZ	2.32	0.63
1:A:118:ILE:O	1:A:157:MET:HB3	1.99	0.63
2:B:58:ARG:H	2:B:58:ARG:CD	2.12	0.63
1:A:207:PHE:HD2	1:A:209:PRO:HG3	1.63	0.63
2:B:92:SER:HA	2:B:95:SER:OG	1.98	0.63
1:A:213:PRO:C	1:A:215:PRO:HD3	2.19	0.62
2:B:46:THR:O	2:B:47:THR:HB	1.99	0.62
3:C:43:LYS:HB3	3:C:49:SER:HB2	1.80	0.62
3:C:145:PHE:CA	3:C:153:ALA:HB1	2.23	0.62
1:A:135:THR:OG1	1:A:136:GLU:CB	2.36	0.62
2:B:92:SER:CA	2:B:95:SER:HB3	2.29	0.62
3:C:233:VAL:HG11	3:C:240:LEU:HD22	1.82	0.62
1:A:41:PRO:HA	1:A:51:LEU:HD23	1.81	0.62
3:C:42:THR:CB	3:C:44:VAL:N	2.61	0.62
3:C:196:ARG:O	3:C:197:GLN:O	2.18	0.62
1:A:46:LYS:H	1:A:49:TYR:HB3	1.64	0.62
1:A:109:TYR:O	1:A:173:ARG:HG3	2.00	0.62
1:A:157:MET:HG2	2:B:41:ALA:HB2	1.82	0.62

Continued on next page...

Continued from previous page...

Atom-1	Atom-2	Interatomic distance (Å)	Clash overlap (Å)
3:C:187:TYR:CE1	3:C:241:GLY:HA3	2.34	0.62
1:A:103:LEU:CA	1:A:106:PHE:CZ	2.81	0.62
2:B:118:ASN:C	2:B:120:VAL:HA	2.21	0.62
2:B:163:PHE:CD1	2:B:177:ALA:CB	2.82	0.61
3:C:115:PRO:C	3:C:152:PRO:CG	2.58	0.61
1:A:113:GLU:OE2	2:B:61:TYR:OH	2.17	0.61
2:B:46:THR:O	2:B:46:THR:HG23	2.00	0.61
2:B:159:ARG:HD2	2:B:216:GLU:OE1	2.01	0.61
3:C:37:GLY:HA3	3:C:39:GLU:OE2	2.00	0.61
2:B:182:CYS:SG	2:B:190:PHE:CZ	2.87	0.61
3:C:192:VAL:HG13	3:C:192:VAL:O	2.00	0.61
1:A:120:TYR:CZ	1:A:122:ALA:HB3	2.35	0.61
2:B:97:ILE:HA	2:B:98:ASP:C	2.20	0.61
1:A:139:ARG:HD2	1:A:141:THR:HG22	1.83	0.61
2:B:41:ALA:N	2:B:43:VAL:H	1.98	0.61
2:B:141:SER:HB3	2:B:194:ILE:O	2.00	0.61
3:C:31:ILE:HG21	3:C:44:VAL:CG1	2.00	0.61
2:B:115:VAL:O	2:B:116:HIS:HB2	1.99	0.61
2:B:155:ARG:HA	2:B:184:ILE:O	2.00	0.61
2:B:167:THR:OG1	2:B:168:HIS:ND1	2.33	0.61
1:A:66:THR:OG1	2:B:244:LYS:HB2	1.99	0.61
1:A:138:ASN:OD1	1:A:139:ARG:N	2.28	0.61
3:C:93:PRO:HB2	3:C:95:PHE:CD2	2.36	0.61
2:B:112:GLN:OE1	2:B:113:ASN:ND2	2.33	0.61
3:C:28:ASN:O	3:C:31:ILE:N	2.34	0.61
1:A:67:LYS:HB2	1:A:67:LYS:HZ3	1.64	0.60
1:A:68:VAL:HG11	1:A:208:PHE:CE1	2.36	0.60
1:A:131:HIS:O	1:A:132:THR:OG1	2.19	0.60
3:C:188:GLU:OE1	3:C:193:ILE:HD11	1.92	0.60
3:C:31:ILE:HA	3:C:44:VAL:HG21	1.84	0.60
3:C:192:VAL:CG1	3:C:194:ASP:OD2	2.49	0.60
3:C:222:LEU:HD21	3:C:224:ILE:HG12	1.82	0.60
3:C:130:TYR:CG	3:C:134:TYR:CE2	2.89	0.60
3:C:115:PRO:O	3:C:152:PRO:HG2	2.01	0.60
2:B:157:ARG:HA	2:B:182:CYS:O	2.01	0.60
3:C:115:PRO:CB	3:C:152:PRO:HB3	2.30	0.60
1:A:219:ARG:HE	1:A:219:ARG:CA	2.15	0.60
3:C:204:LEU:HD11	3:C:246:TYR:HE2	1.65	0.60
2:B:141:SER:O	2:B:239:LEU:HD13	2.00	0.60
3:C:97:ASN:O	3:C:98:VAL:O	2.19	0.60
1:A:90:ARG:CD	1:A:182:MET:HE1	2.28	0.60

Continued on next page...

Continued from previous page...

Atom-1	Atom-2	Interatomic distance (Å)	Clash overlap (Å)
1:A:119:LEU:HB3	1:A:196:GLU:HB2	1.84	0.60
2:B:22:TYR:CB	2:B:23:LYS:CA	2.80	0.60
3:C:141:LEU:HB3	3:C:239:ASP:CB	2.22	0.59
3:C:151:LYS:HE3	3:C:151:LYS:CA	2.32	0.59
1:A:116:ILE:CD1	1:A:133:TYR:HE2	2.15	0.59
3:C:65:ASN:CG	3:C:67:ASP:HB2	2.19	0.59
3:C:141:LEU:HD13	3:C:239:ASP:OD2	2.02	0.59
2:B:56:GLY:HA2	2:B:57:GLU:HB3	1.84	0.59
2:B:134:THR:HG23	2:B:135:TYR:H	1.66	0.59
3:C:56:SER:C	3:C:58:ALA:N	2.52	0.59
3:C:191:PRO:O	3:C:192:VAL:HG12	2.02	0.59
1:A:68:VAL:HG23	2:B:73:ASP:C	2.23	0.59
2:B:200:THR:HG22	2:B:201:TRP:H	1.67	0.59
3:C:98:VAL:HA	3:C:99:ASP:CB	2.31	0.59
3:C:141:LEU:CB	3:C:239:ASP:HB3	2.24	0.59
2:B:81:LEU:O	2:B:238:ARG:NE	2.34	0.59
1:A:29:ASN:ND2	3:C:211:LEU:N	2.43	0.59
2:B:90:THR:N	2:B:91:PRO:CA	2.61	0.59
2:B:188:ASN:HB2	2:B:189:SER:CA	2.18	0.59
1:A:68:VAL:CG1	1:A:69:ASP:H	2.06	0.58
1:A:85:ASN:ND2	1:A:192:ARG:HA	2.19	0.58
1:A:91:GLN:OE1	1:A:91:GLN:N	2.20	0.58
2:B:22:TYR:HB3	2:B:23:LYS:CA	2.33	0.58
2:B:81:LEU:H	2:B:238:ARG:NE	2.01	0.58
2:B:188:ASN:HD21	3:C:213:ASN:HD22	1.50	0.58
3:C:31:ILE:HG23	3:C:44:VAL:CG2	2.33	0.58
3:C:36:VAL:HG12	3:C:36:VAL:O	2.04	0.58
3:C:96:ARG:HD2	3:C:97:ASN:HB3	1.84	0.58
1:A:170:ARG:HD3	1:A:171:THR:N	2.15	0.58
3:C:204:LEU:HD23	3:C:204:LEU:O	2.04	0.58
1:A:46:LYS:N	1:A:49:TYR:HB3	2.19	0.58
1:A:207:PHE:N	1:A:208:PHE:HA	2.17	0.58
2:B:133:ASN:HD21	2:B:253:VAL:HG22	1.69	0.58
3:C:124:ALA:O	3:C:125:SER:OG	2.19	0.58
3:C:60:THR:C	3:C:64:GLU:CG	2.64	0.57
3:C:100:ASN:HB3	3:C:101:PHE:HA	1.85	0.57
3:C:152:PRO:C	3:C:154:TYR:N	2.39	0.57
3:C:196:ARG:HD3	3:C:244:ARG:HH12	1.70	0.57
1:A:80:SER:OG	1:A:81:HIS:N	2.36	0.57
1:A:133:TYR:CA	1:A:134:ASP:HB2	2.34	0.57
3:C:139:VAL:HB	3:C:243:LEU:HB2	1.86	0.57

Continued on next page...

Continued from previous page...

Atom-1	Atom-2	Interatomic distance (Å)	Clash overlap (Å)
3:C:237:SER:O	3:C:239:ASP:OD1	2.22	0.57
1:A:51:LEU:HD12	1:A:53:PHE:N	2.19	0.57
1:A:90:ARG:CB	1:A:91:GLN:CA	2.83	0.57
1:A:210:VAL:C	1:A:213:PRO:HD2	2.21	0.57
2:B:56:GLY:CA	2:B:57:GLU:HB3	2.33	0.57
1:A:104:SER:N	1:A:106:PHE:CE1	2.72	0.57
3:C:38:GLY:O	3:C:41:ILE:HA	2.05	0.57
2:B:56:GLY:C	2:B:57:GLU:CG	2.71	0.57
1:A:132:THR:HG22	1:A:133:TYR:N	2.19	0.57
1:A:46:LYS:H	1:A:49:TYR:CB	2.18	0.57
3:C:97:ASN:O	3:C:98:VAL:C	2.42	0.56
2:B:74:ASP:OD1	2:B:76:ILE:N	2.38	0.56
1:A:89:TRP:CD1	1:A:90:ARG:CD	2.85	0.56
1:A:163:PHE:CD1	1:A:164:TYR:N	2.73	0.56
2:B:25:THR:HG23	2:B:26:ARG:N	2.19	0.56
2:B:127:ASN:O	2:B:130:LEU:HG	2.05	0.56
3:C:30:ILE:O	3:C:33:GLY:N	2.39	0.56
3:C:98:VAL:CA	3:C:99:ASP:HB2	2.35	0.56
2:B:75:MET:N	2:B:75:MET:HE2	2.19	0.56
1:A:68:VAL:HG11	1:A:208:PHE:HE1	1.69	0.56
1:A:133:TYR:HD1	1:A:134:ASP:O	1.89	0.56
3:C:66:LYS:O	3:C:68:VAL:O	2.23	0.56
3:C:43:LYS:CD	3:C:49:SER:HB2	2.16	0.56
2:B:88:ASN:O	2:B:91:PRO:CA	2.52	0.56
2:B:143:ILE:HD11	2:B:191:GLU:HG2	1.87	0.56
3:C:98:VAL:CA	3:C:99:ASP:CB	2.84	0.56
2:B:87:ASP:O	2:B:93:SER:OG	2.23	0.56
3:C:41:ILE:HD13	3:C:41:ILE:O	2.05	0.56
3:C:193:ILE:CG2	3:C:196:ARG:CZ	2.82	0.56
1:A:27:SER:O	1:A:30:GLU:OE1	2.14	0.56
2:B:114:MET:SD	2:B:115:VAL:HG22	2.46	0.56
3:C:244:ARG:NH1	3:C:246:TYR:OH	2.38	0.56
2:B:88:ASN:C	2:B:91:PRO:CA	2.74	0.56
2:B:178:ILE:HG22	2:B:179:TYR:N	2.20	0.56
1:A:75:ALA:CB	1:A:200:SER:HB2	2.23	0.55
1:A:89:TRP:HD1	1:A:90:ARG:CB	2.19	0.55
1:A:95:PHE:HE2	1:A:97:LYS:HZ2	1.54	0.55
1:A:133:TYR:CA	1:A:134:ASP:CB	2.84	0.55
2:B:35:PRO:HA	2:B:38:MET:HG3	1.87	0.55
2:B:40:MET:HG3	2:B:43:VAL:H	1.70	0.55
2:B:75:MET:CE	2:B:75:MET:HA	2.35	0.55

Continued on next page...

Continued from previous page...

Atom-1	Atom-2	Interatomic distance (Å)	Clash overlap (Å)
3:C:130:TYR:CD1	3:C:134:TYR:CD2	2.94	0.55
1:A:177:ALA:O	1:A:178:LEU:HB3	2.05	0.55
1:A:89:TRP:HD1	1:A:90:ARG:CG	2.19	0.55
1:A:110:PHE:O	1:A:170:ARG:CD	2.45	0.55
1:A:219:ARG:HA	1:A:219:ARG:HE	1.70	0.55
2:B:58:ARG:H	2:B:58:ARG:CZ	2.18	0.55
3:C:98:VAL:HA	3:C:99:ASP:CG	2.27	0.55
1:A:206:PHE:O	1:A:207:PHE:CB	2.55	0.55
3:C:164:ARG:CZ	3:C:226:TYR:OH	2.55	0.55
1:A:163:PHE:CD1	1:A:166:ASN:HB3	2.41	0.55
2:B:88:ASN:HA	2:B:92:SER:H	1.70	0.55
3:C:109:THR:HG22	3:C:110:THR:H	1.72	0.55
1:A:68:VAL:HG23	2:B:74:ASP:N	2.20	0.55
1:A:83:PHE:CZ	1:A:185:PRO:HG3	2.41	0.55
1:A:89:TRP:C	1:A:90:ARG:HG3	2.27	0.55
2:B:114:MET:SD	2:B:115:VAL:CG2	2.94	0.55
2:B:218:LEU:HD12	2:B:219:ASN:N	2.22	0.55
3:C:100:ASN:C	3:C:102:HIS:HA	2.27	0.55
1:A:94:THR:HG22	1:A:180:PHE:HE1	1.72	0.55
1:A:168:PRO:N	1:A:169:LEU:HD13	2.22	0.55
3:C:39:GLU:H	3:C:39:GLU:CD	2.09	0.55
3:C:61:ALA:C	3:C:64:GLU:HG3	2.27	0.55
2:B:149:TYR:O	2:B:231:VAL:HG23	2.07	0.55
3:C:187:TYR:CZ	3:C:224:ILE:HG21	2.42	0.55
2:B:150:ALA:HB2	2:B:231:VAL:CG2	2.36	0.54
3:C:112:ASP:C	3:C:113:LYS:HG2	2.28	0.54
1:A:94:THR:HG22	1:A:180:PHE:CE1	2.42	0.54
2:B:165:ASN:CB	2:B:166:CYS:HA	2.36	0.54
3:C:122:ASP:CG	3:C:265:VAL:HG22	2.28	0.54
3:C:96:ARG:HB3	3:C:97:ASN:O	2.06	0.54
3:C:103:SER:C	3:C:104:MET:HG2	2.28	0.54
1:A:43:GLY:N	1:A:44:ASN:O	2.40	0.54
1:A:111:THR:OG1	1:A:112:GLY:N	2.37	0.54
2:B:67:GLY:H	3:C:227:VAL:HG13	1.72	0.54
3:C:62:GLN:CB	3:C:63:PRO:CD	2.85	0.54
3:C:96:ARG:HB3	3:C:97:ASN:HB3	1.90	0.54
1:A:46:LYS:HB3	1:A:49:TYR:CD2	2.43	0.54
3:C:145:PHE:CZ	3:C:269:LEU:HD11	2.43	0.54
3:C:161:ALA:CB	3:C:278:ARG:HD3	2.38	0.54
1:A:212:ALA:HB2	2:B:78:ILE:CG1	2.38	0.54
2:B:109:VAL:HG11	2:B:220:ARG:NH2	2.23	0.54

Continued on next page...

Continued from previous page...

Atom-1	Atom-2	Interatomic distance (Å)	Clash overlap (Å)
3:C:218:THR:OG1	3:C:219:GLN:OE1	2.14	0.54
2:B:252:LEU:HD13	2:B:255:PHE:HA	1.88	0.54
2:B:163:PHE:CE1	2:B:177:ALA:HB2	2.42	0.54
1:A:161:VAL:CG2	1:A:162:PRO:CD	2.86	0.53
1:A:176:SER:OG	1:A:177:ALA:HB2	2.08	0.53
1:A:179:GLY:O	1:A:180:PHE:CB	2.52	0.53
1:A:189:GLY:O	1:A:190:THR:OG1	2.23	0.53
2:B:22:TYR:CD1	2:B:24:TRP:HB3	2.42	0.53
2:B:183:ASP:H	2:B:190:PHE:HZ	1.56	0.53
2:B:172:LEU:HA	2:B:174:LEU:HG	1.90	0.53
3:C:130:TYR:CG	3:C:134:TYR:CD2	2.97	0.53
1:A:140:LYS:N	1:A:141:THR:HB	2.19	0.53
1:A:219:ARG:NH2	2:B:256:GLN:CB	2.67	0.53
2:B:157:ARG:HG2	2:B:183:ASP:OD1	2.08	0.53
1:A:45:GLU:H	1:A:46:LYS:HB2	1.73	0.53
1:A:219:ARG:C	1:A:221:ALA:N	2.60	0.53
2:B:201:TRP:CE3	2:B:202:MET:HG3	2.44	0.53
2:B:37:THR:CA	2:B:38:MET:C	2.75	0.53
2:B:206:HIS:CD2	2:B:207:GLY:H	2.25	0.53
1:A:115:ASN:OD1	1:A:160:SER:OG	2.19	0.53
1:A:202:ARG:NE	2:B:51:SER:HG	2.07	0.53
2:B:87:ASP:OD1	2:B:93:SER:OG	2.18	0.53
2:B:118:ASN:HB3	2:B:120:VAL:CA	2.38	0.53
1:A:66:THR:CG2	2:B:76:ILE:HG23	2.35	0.53
2:B:116:HIS:O	2:B:117:ARG:CB	2.45	0.53
3:C:61:ALA:O	3:C:64:GLU:HB2	2.06	0.53
3:C:112:ASP:C	3:C:113:LYS:CG	2.75	0.53
1:A:144:SER:HA	1:A:148:VAL:HG12	1.91	0.52
1:A:219:ARG:NE	1:A:219:ARG:CA	2.72	0.52
2:B:40:MET:HG3	2:B:42:ASN:HB3	1.91	0.52
3:C:50:ASN:O	3:C:51:LEU:C	2.42	0.52
2:B:47:THR:HG22	2:B:48:GLY:N	2.24	0.52
2:B:178:ILE:CG2	2:B:179:TYR:N	2.72	0.52
2:B:58:ARG:CZ	2:B:58:ARG:N	2.72	0.52
2:B:252:LEU:HD13	2:B:254:SER:H	1.73	0.52
1:A:111:THR:CG2	1:A:206:PHE:HA	2.39	0.52
1:A:113:GLU:OE2	2:B:61:TYR:CE1	2.61	0.52
1:A:140:LYS:HB2	1:A:141:THR:HA	1.91	0.52
1:A:169:LEU:N	1:A:169:LEU:CD1	2.73	0.52
3:C:22:ASN:O	3:C:26:GLU:HG3	2.09	0.52
3:C:54:PRO:O	3:C:56:SER:HA	2.09	0.52

Continued on next page...

Continued from previous page...

Atom-1	Atom-2	Interatomic distance (Å)	Clash overlap (Å)
1:A:29:ASN:ND2	3:C:211:LEU:H	2.08	0.52
1:A:211:PRO:CA	1:A:213:PRO:HD2	2.40	0.52
3:C:42:THR:N	3:C:43:LYS:CA	2.73	0.52
3:C:135:LYS:HD2	3:C:138:THR:HG23	1.91	0.52
3:C:202:GLY:N	3:C:203:SER:CB	2.72	0.52
1:A:202:ARG:HG3	1:A:203:CYS:SG	2.49	0.52
2:B:31:ILE:HG22	2:B:33:GLU:HB2	1.92	0.52
2:B:58:ARG:CD	2:B:58:ARG:N	2.73	0.52
2:B:206:HIS:CG	2:B:207:GLY:N	2.77	0.52
1:A:67:LYS:CG	1:A:68:VAL:N	2.73	0.52
1:A:126:PHE:HD2	1:A:127:LEU:HB2	1.74	0.52
3:C:108:ILE:HG13	3:C:109:THR:HA	1.90	0.52
3:C:122:ASP:HB2	3:C:264:THR:HA	1.91	0.52
1:A:132:THR:HG22	1:A:133:TYR:H	1.75	0.52
2:B:75:MET:CE	2:B:75:MET:CA	2.89	0.52
3:C:28:ASN:ND2	3:C:52:LEU:HB3	2.22	0.52
3:C:195:SER:O	3:C:197:GLN:N	2.43	0.52
2:B:178:ILE:CD1	2:B:178:ILE:N	2.73	0.51
2:B:58:ARG:CG	2:B:59:ALA:N	2.64	0.51
3:C:135:LYS:CG	3:C:136:ILE:N	2.73	0.51
1:A:96:PRO:O	1:A:176:SER:OG	2.28	0.51
2:B:25:THR:CG2	2:B:26:ARG:N	2.73	0.51
3:C:201:PHE:C	3:C:203:SER:OG	2.44	0.51
2:B:163:PHE:HB2	2:B:166:CYS:SG	2.51	0.51
3:C:40:ILE:N	3:C:42:THR:HA	2.25	0.51
3:C:65:ASN:OD1	3:C:67:ASP:HB2	2.10	0.51
3:C:118:LEU:HD23	3:C:268:SER:CB	2.35	0.51
3:C:185:VAL:HB	3:C:210:VAL:CG1	2.40	0.51
1:A:26:ILE:CG2	1:A:27:SER:N	2.73	0.51
1:A:92:LYS:CB	1:A:92:LYS:NZ	2.73	0.51
2:B:42:ASN:O	2:B:43:VAL:HB	2.07	0.51
3:C:72:THR:HG22	3:C:73:THR:N	2.25	0.51
1:A:206:PHE:O	1:A:208:PHE:CA	2.54	0.51
3:C:195:SER:C	3:C:197:GLN:N	2.64	0.51
1:A:218:SER:O	3:C:199:LEU:HB3	2.09	0.51
2:B:73:ASP:O	2:B:74:ASP:HB3	2.11	0.51
3:C:204:LEU:HD11	3:C:246:TYR:CE2	2.44	0.51
3:C:151:LYS:CB	3:C:152:PRO:CD	2.85	0.51
3:C:192:VAL:HG12	3:C:194:ASP:OD1	2.05	0.51
1:A:90:ARG:HB3	1:A:92:LYS:N	2.25	0.51
2:B:72:PHE:CD1	2:B:74:ASP:O	2.64	0.51

Continued on next page...

Continued from previous page...

Atom-1	Atom-2	Interatomic distance (Å)	Clash overlap (Å)
2:B:75:MET:N	2:B:75:MET:CE	2.73	0.51
2:B:187:ASP:O	2:B:188:ASN:O	2.29	0.51
2:B:251:SER:CB	2:B:252:LEU:HA	2.40	0.51
3:C:122:ASP:OD2	3:C:265:VAL:N	2.44	0.51
3:C:126:TRP:HE1	3:C:251:LEU:HB2	1.76	0.51
1:A:70:ASN:O	1:A:73:GLY:N	2.43	0.51
1:A:161:VAL:HG22	1:A:162:PRO:N	2.26	0.51
1:A:202:ARG:HE	2:B:51:SER:HG	1.58	0.51
1:A:207:PHE:HD1	2:B:71:ARG:CA	2.23	0.51
3:C:89:ILE:HG22	3:C:90:PRO:O	2.11	0.51
3:C:142:PRO:HG2	3:C:240:LEU:HG	1.92	0.51
3:C:155:GLY:O	3:C:158:LYS:HG2	2.11	0.50
3:C:229:ASP:OD1	3:C:230:THR:N	2.41	0.50
1:A:97:LYS:HG3	1:A:177:ALA:HB3	1.93	0.50
1:A:172:VAL:CG2	1:A:175:ASP:CG	2.65	0.50
2:B:73:ASP:O	2:B:74:ASP:O	2.29	0.50
2:B:88:ASN:HB3	2:B:91:PRO:HB2	1.83	0.50
3:C:130:TYR:HB3	3:C:134:TYR:HD2	1.75	0.50
1:A:89:TRP:CD1	1:A:90:ARG:CG	2.94	0.50
1:A:115:ASN:CB	1:A:200:SER:O	2.52	0.50
1:A:69:ASP:O	1:A:70:ASN:C	2.50	0.50
1:A:109:TYR:HE1	1:A:211:PRO:HA	1.77	0.50
1:A:179:GLY:C	1:A:180:PHE:CG	2.79	0.50
2:B:23:LYS:CG	2:B:24:TRP:C	2.71	0.50
1:A:120:TYR:CD1	1:A:129:VAL:HG21	2.47	0.50
3:C:96:ARG:CD	3:C:97:ASN:HB3	2.42	0.50
1:A:51:LEU:CD1	1:A:53:PHE:H	2.25	0.50
1:A:105:GLN:HB2	2:B:134:THR:HB	1.93	0.50
2:B:188:ASN:CB	2:B:189:SER:CA	2.79	0.50
1:A:46:LYS:HB3	1:A:49:TYR:CG	2.47	0.50
1:A:96:PRO:C	1:A:177:ALA:CB	2.76	0.50
2:B:80:GLN:N	2:B:238:ARG:HD2	2.27	0.50
3:C:209:HIS:C	3:C:209:HIS:CD2	2.85	0.50
1:A:28:PRO:O	1:A:30:GLU:HG3	2.12	0.50
1:A:48:ASN:HB2	1:A:49:TYR:HA	1.94	0.50
1:A:77:TYR:CD1	1:A:77:TYR:N	2.79	0.50
1:A:131:HIS:HE1	1:A:181:LEU:HB3	1.77	0.50
1:A:149:ILE:HG13	1:A:159:LEU:HD21	1.94	0.50
3:C:130:TYR:HB3	3:C:134:TYR:CD2	2.47	0.50
3:C:196:ARG:NH1	3:C:196:ARG:N	2.60	0.50
1:A:89:TRP:CD1	1:A:89:TRP:C	2.85	0.49

Continued on next page...

Continued from previous page...

Atom-1	Atom-2	Interatomic distance (Å)	Clash overlap (Å)
1:A:139:ARG:HD2	1:A:141:THR:CG2	2.42	0.49
1:A:156:GLN:OE1	2:B:41:ALA:HB3	2.12	0.49
2:B:37:THR:HA	2:B:40:MET:N	2.21	0.49
3:C:151:LYS:CE	3:C:151:LYS:CA	2.85	0.49
1:A:77:TYR:N	1:A:77:TYR:HD1	2.10	0.49
1:A:107:PHE:CD1	1:A:107:PHE:C	2.85	0.49
1:A:117:HIS:HB3	1:A:157:MET:SD	2.52	0.49
3:C:120:ARG:C	3:C:121:LEU:HD12	2.33	0.49
1:A:64:SER:CA	1:A:67:LYS:HB3	2.38	0.49
1:A:90:ARG:CB	1:A:91:GLN:HA	2.43	0.49
1:A:206:PHE:CD1	1:A:209:PRO:HD3	2.47	0.49
1:A:96:PRO:HB2	1:A:98:GLU:O	2.12	0.49
1:A:163:PHE:HD1	1:A:164:TYR:N	2.10	0.49
1:A:205:ASN:HD22	2:B:61:TYR:HE2	1.60	0.49
3:C:107:ASP:N	3:C:107:ASP:OD1	2.46	0.49
1:A:74:ARG:HG2	1:A:75:ALA:N	2.27	0.49
1:A:133:TYR:CD1	1:A:133:TYR:C	2.85	0.49
3:C:31:ILE:HG22	3:C:44:VAL:CG1	2.23	0.49
3:C:62:GLN:HG3	3:C:63:PRO:HD3	1.94	0.49
3:C:249:THR:O	3:C:249:THR:HG22	2.12	0.49
1:A:92:LYS:NZ	1:A:92:LYS:HB2	2.27	0.49
1:A:120:TYR:CZ	1:A:122:ALA:HB2	2.47	0.49
2:B:58:ARG:NH1	2:B:58:ARG:N	2.60	0.49
2:B:256:GLN:OE1	2:B:256:GLN:N	2.37	0.49
3:C:50:ASN:N	3:C:50:ASN:ND2	2.60	0.49
1:A:89:TRP:CD1	1:A:90:ARG:N	2.80	0.49
1:A:108:ALA:HB3	1:A:109:TYR:CZ	2.46	0.49
3:C:64:GLU:O	3:C:65:ASN:O	2.30	0.49
1:A:103:LEU:O	1:A:106:PHE:CG	2.66	0.49
1:A:164:TYR:CD1	1:A:164:TYR:C	2.86	0.49
2:B:22:TYR:HB2	2:B:24:TRP:HB3	1.91	0.49
2:B:112:GLN:O	2:B:113:ASN:CG	2.52	0.49
3:C:24:GLU:OE1	3:C:52:LEU:O	2.31	0.49
3:C:47:ASP:O	3:C:50:ASN:ND2	2.46	0.49
1:A:26:ILE:CG2	1:A:27:SER:H	2.24	0.48
1:A:62:THR:O	1:A:63:VAL:HG12	2.13	0.48
1:A:147:GLY:C	1:A:148:VAL:HG13	2.33	0.48
1:A:206:PHE:O	1:A:209:PRO:CG	2.60	0.48
1:A:206:PHE:C	1:A:206:PHE:CD1	2.85	0.48
2:B:114:MET:HG3	2:B:215:VAL:C	2.30	0.48
3:C:70:GLN:O	3:C:71:ALA:HB2	2.13	0.48

Continued on next page...

Continued from previous page...

Atom-1	Atom-2	Interatomic distance (Å)	Clash overlap (Å)
3:C:141:LEU:HD23	3:C:241:GLY:O	2.12	0.48
1:A:109:TYR:CD2	1:A:206:PHE:CE1	2.83	0.48
1:A:110:PHE:CB	1:A:170:ARG:HD2	2.43	0.48
1:A:161:VAL:HG23	1:A:162:PRO:CD	2.43	0.48
2:B:24:TRP:C	2:B:24:TRP:CD1	2.85	0.48
2:B:27:THR:OG1	2:B:28:LYS:N	2.46	0.48
3:C:62:GLN:HB3	3:C:63:PRO:HD3	1.94	0.48
1:A:163:PHE:HD1	1:A:163:PHE:C	2.17	0.48
1:A:149:ILE:HG22	1:A:149:ILE:O	2.13	0.48
1:A:219:ARG:O	1:A:221:ALA:N	2.45	0.48
2:B:113:ASN:ND2	2:B:113:ASN:N	2.60	0.48
1:A:168:PRO:CA	1:A:169:LEU:HD13	2.42	0.48
2:B:82:PHE:HD2	2:B:145:ARG:HH11	1.62	0.48
3:C:193:ILE:HD13	3:C:193:ILE:H	1.77	0.48
1:A:168:PRO:C	1:A:170:ARG:H	2.15	0.48
2:B:52:VAL:O	2:B:54:LEU:HG	2.14	0.48
2:B:183:ASP:N	2:B:190:PHE:HZ	2.12	0.48
3:C:23:VAL:O	3:C:26:GLU:HB2	2.14	0.48
3:C:64:GLU:O	3:C:65:ASN:C	2.52	0.48
1:A:99:GLY:HA3	1:A:100:HIS:HA	1.50	0.48
2:B:94:SER:N	2:B:95:SER:HA	2.28	0.48
1:A:117:HIS:CE1	2:B:44:LEU:HD23	2.35	0.48
1:A:161:VAL:CG2	1:A:162:PRO:HD2	2.44	0.48
2:B:106:ALA:O	2:B:107:ALA:HB2	2.13	0.48
2:B:112:GLN:C	2:B:113:ASN:CG	2.71	0.48
3:C:103:SER:O	3:C:103:SER:OG	2.31	0.48
1:A:62:THR:C	1:A:64:SER:H	2.15	0.48
1:A:215:PRO:HG2	3:C:204:LEU:H	1.76	0.48
2:B:105:TRP:HZ3	2:B:107:ALA:HB2	1.79	0.48
3:C:98:VAL:HG22	3:C:99:ASP:CB	2.43	0.48
3:C:122:ASP:OD2	3:C:265:VAL:HG13	2.14	0.48
1:A:67:LYS:HG2	2:B:73:ASP:CG	2.34	0.47
1:A:89:TRP:HD1	1:A:90:ARG:N	2.12	0.47
2:B:178:ILE:N	2:B:178:ILE:HD12	2.29	0.47
3:C:124:ALA:HA	3:C:262:ASP:HB2	1.96	0.47
1:A:110:PHE:HB2	1:A:170:ARG:HD2	1.97	0.47
3:C:136:ILE:HD12	3:C:136:ILE:C	2.34	0.47
1:A:43:GLY:CA	1:A:50:PHE:CD2	2.96	0.47
1:A:96:PRO:C	1:A:98:GLU:H	2.17	0.47
2:B:80:GLN:O	2:B:81:LEU:HD12	2.14	0.47
2:B:171:GLN:O	2:B:173:GLU:N	2.47	0.47

Continued on next page...

Continued from previous page...

Atom-1	Atom-2	Interatomic distance (Å)	Clash overlap (Å)
2:B:218:LEU:HD12	2:B:219:ASN:H	1.79	0.47
3:C:201:PHE:C	3:C:203:SER:CB	2.82	0.47
2:B:56:GLY:N	2:B:57:GLU:HB3	2.30	0.47
2:B:187:ASP:C	2:B:188:ASN:O	2.52	0.47
2:B:91:PRO:O	2:B:92:SER:OG	2.27	0.47
2:B:196:TYR:OH	2:B:201:TRP:O	2.17	0.47
3:C:107:ASP:HA	3:C:108:ILE:HA	1.62	0.47
3:C:201:PHE:O	3:C:203:SER:C	2.52	0.47
1:A:64:SER:O	1:A:67:LYS:N	2.47	0.47
1:A:147:GLY:O	1:A:148:VAL:CG1	2.63	0.47
2:B:23:LYS:HG2	2:B:24:TRP:CA	2.43	0.47
2:B:33:GLU:HB3	2:B:34:GLY:O	2.15	0.47
2:B:55:VAL:HG12	2:B:56:GLY:N	2.29	0.47
2:B:167:THR:OG1	2:B:168:HIS:N	2.45	0.47
3:C:126:TRP:CD1	3:C:127:GLN:N	2.83	0.47
2:B:24:TRP:N	2:B:24:TRP:CD1	2.76	0.47
1:A:62:THR:O	1:A:64:SER:N	2.46	0.47
2:B:146:LEU:HD11	2:B:233:CYS:HB3	1.97	0.47
2:B:88:ASN:HA	2:B:91:PRO:CB	2.33	0.47
1:A:97:LYS:HD2	1:A:177:ALA:HB1	1.97	0.46
2:B:74:ASP:OD1	2:B:77:LYS:N	2.44	0.46
3:C:31:ILE:HG23	3:C:44:VAL:HG11	0.46	0.46
3:C:277:PRO:O	3:C:278:ARG:HG3	2.15	0.46
3:C:196:ARG:NH1	3:C:196:ARG:CB	2.73	0.46
1:A:83:PHE:CE2	1:A:85:ASN:HA	2.50	0.46
1:A:133:TYR:HA	1:A:134:ASP:CB	2.46	0.46
1:A:163:PHE:CD1	1:A:163:PHE:C	2.88	0.46
3:C:96:ARG:CB	3:C:97:ASN:HB3	2.46	0.46
3:C:174:ASN:OD1	3:C:218:THR:HB	2.16	0.46
1:A:111:THR:HG22	1:A:206:PHE:HA	1.96	0.46
2:B:173:GLU:O	2:B:176:ASN:N	2.49	0.46
2:B:194:ILE:HG13	2:B:195:PRO:O	2.16	0.46
1:A:71:ILE:HG13	2:B:135:TYR:OH	2.15	0.46
1:A:74:ARG:HG2	1:A:75:ALA:H	1.79	0.46
2:B:120:VAL:HG21	2:B:211:GLY:N	2.31	0.46
2:B:188:ASN:ND2	3:C:213:ASN:HD22	2.13	0.46
3:C:39:GLU:C	3:C:42:THR:HG22	2.35	0.46
3:C:175:VAL:HG12	3:C:261:VAL:HG11	1.98	0.46
1:A:68:VAL:O	1:A:69:ASP:HB3	2.16	0.46
1:A:173:ARG:NH2	1:A:214:LYS:HB2	2.31	0.46
2:B:27:THR:OG1	2:B:29:VAL:HG23	2.15	0.46

Continued on next page...

Continued from previous page...

Atom-1	Atom-2	Interatomic distance (Å)	Clash overlap (Å)
2:B:163:PHE:HZ	2:B:173:GLU:C	2.19	0.46
2:B:169:ASP:HA	2:B:170:THR:HB	1.98	0.46
3:C:109:THR:HG22	3:C:113:LYS:CB	2.30	0.46
1:A:43:GLY:N	1:A:50:PHE:CB	2.79	0.45
1:A:43:GLY:N	1:A:50:PHE:HB2	2.31	0.45
2:B:100:TYR:CG	2:B:101:GLY:N	2.84	0.45
2:B:46:THR:O	2:B:48:GLY:N	2.49	0.45
3:C:58:ALA:HA	3:C:59:THR:HA	1.66	0.45
1:A:163:PHE:HE1	1:A:166:ASN:HB3	1.78	0.45
2:B:136:SER:O	2:B:137:TYR:CG	2.70	0.45
2:B:187:ASP:HB3	3:C:216:GLU:OE2	2.16	0.45
2:B:114:MET:HG2	2:B:215:VAL:HG23	1.93	0.45
1:A:211:PRO:HA	1:A:213:PRO:HD2	1.98	0.45
1:A:98:GLU:HA	1:A:100:HIS:HA	1.97	0.45
1:A:109:TYR:HA	1:A:173:ARG:HE	1.82	0.45
2:B:135:TYR:CD2	2:B:245:PHE:HD2	2.35	0.45
1:A:169:LEU:HD22	1:A:170:ARG:O	2.17	0.45
1:A:175:ASP:HB2	1:A:176:SER:HA	1.97	0.45
1:A:217:GLY:O	1:A:218:SER:C	2.55	0.45
2:B:22:TYR:N	2:B:23:LYS:C	2.70	0.45
2:B:26:ARG:HA	2:B:27:THR:HA	1.73	0.45
2:B:65:THR:HB	2:B:66:ALA:HA	1.99	0.45
2:B:88:ASN:CB	2:B:91:PRO:HB3	2.44	0.45
2:B:111:PRO:HA	2:B:218:LEU:HA	1.99	0.45
1:A:134:ASP:HA	1:A:135:THR:HG23	1.92	0.45
2:B:98:ASP:OD1	2:B:98:ASP:N	2.48	0.45
3:C:60:THR:O	3:C:64:GLU:OE2	2.35	0.45
3:C:98:VAL:HG13	3:C:100:ASN:CA	2.35	0.45
3:C:226:TYR:H	3:C:226:TYR:HD1	1.64	0.45
1:A:29:ASN:HD22	3:C:211:LEU:HB3	1.76	0.45
1:A:83:PHE:CD2	1:A:193:THR:HB	2.52	0.45
1:A:161:VAL:HG22	1:A:162:PRO:CD	2.47	0.45
1:A:201:LEU:HD12	1:A:204:PRO:HG3	1.98	0.45
2:B:22:TYR:H	2:B:24:TRP:N	2.15	0.45
2:B:189:SER:O	2:B:190:PHE:CG	2.70	0.45
2:B:227:SER:HB3	2:B:228:PRO:HD2	1.97	0.45
3:C:28:ASN:HD21	3:C:52:LEU:CB	2.25	0.45
3:C:62:GLN:HB3	3:C:63:PRO:HD2	1.95	0.45
1:A:167:LYS:C	1:A:169:LEU:CD1	2.85	0.44
2:B:41:ALA:CA	2:B:43:VAL:N	2.80	0.44
2:B:43:VAL:CG1	2:B:44:LEU:H	2.13	0.44

Continued on next page...

Continued from previous page...

Atom-1	Atom-2	Interatomic distance (Å)	Clash overlap (Å)
1:A:51:LEU:HD12	1:A:53:PHE:H	1.79	0.44
3:C:100:ASN:N	3:C:101:PHE:HA	2.32	0.44
1:A:163:PHE:O	1:A:164:TYR:CD1	2.70	0.44
1:A:163:PHE:O	1:A:164:TYR:CG	2.70	0.44
1:A:214:LYS:O	1:A:216:THR:HG22	2.18	0.44
2:B:43:VAL:O	2:B:44:LEU:HD22	2.17	0.44
2:B:64:ARG:HG3	2:B:65:THR:O	2.17	0.44
2:B:109:VAL:HG22	2:B:110:ALA:N	2.29	0.44
2:B:121:THR:O	2:B:122:LEU:HB2	2.18	0.44
2:B:136:SER:O	2:B:137:TYR:CD2	2.71	0.44
2:B:188:ASN:ND2	3:C:213:ASN:ND2	2.65	0.44
3:C:65:ASN:C	3:C:67:ASP:H	2.21	0.44
3:C:146:TRP:CA	3:C:153:ALA:HB1	2.44	0.44
3:C:187:TYR:O	3:C:187:TYR:CD2	2.70	0.44
3:C:41:ILE:CD1	3:C:41:ILE:C	2.86	0.44
3:C:126:TRP:HE1	3:C:251:LEU:CB	2.30	0.44
1:A:219:ARG:HE	1:A:219:ARG:N	2.16	0.44
2:B:125:PHE:HD2	3:C:199:LEU:HD21	1.82	0.44
2:B:166:CYS:SG	2:B:167:THR:HG22	2.58	0.44
3:C:56:SER:O	3:C:58:ALA:N	2.51	0.44
3:C:187:TYR:O	3:C:187:TYR:CG	2.70	0.44
2:B:61:TYR:HE2	2:B:63:PRO:HG3	1.82	0.44
3:C:59:THR:H	3:C:60:THR:HA	1.83	0.44
1:A:147:GLY:C	1:A:148:VAL:CG1	2.86	0.44
2:B:23:LYS:CG	2:B:24:TRP:CA	2.96	0.44
2:B:90:THR:OG1	2:B:91:PRO:C	2.55	0.44
2:B:189:SER:O	2:B:190:PHE:CD1	2.70	0.44
1:A:173:ARG:HH22	1:A:214:LYS:N	2.08	0.44
2:B:134:THR:HG23	2:B:135:TYR:N	2.32	0.44
1:A:90:ARG:CB	1:A:91:GLN:C	2.85	0.44
1:A:211:PRO:HG3	2:B:72:PHE:CE2	2.53	0.44
2:B:159:ARG:HG2	2:B:216:GLU:HB3	2.00	0.44
3:C:110:THR:HB	3:C:111:GLY:CA	2.35	0.44
2:B:58:ARG:H	2:B:58:ARG:HH11	1.66	0.43
2:B:114:MET:HB2	2:B:216:GLU:HA	1.98	0.43
3:C:43:LYS:CG	3:C:49:SER:HB2	2.48	0.43
1:A:106:PHE:O	1:A:106:PHE:CD1	2.71	0.43
1:A:206:PHE:CB	1:A:208:PHE:HD1	2.26	0.43
2:B:173:GLU:O	2:B:176:ASN:HB3	2.18	0.43
3:C:54:PRO:C	3:C:56:SER:CA	2.85	0.43
1:A:90:ARG:NE	1:A:182:MET:HE1	2.33	0.43

Continued on next page...

Continued from previous page...

Atom-1	Atom-2	Interatomic distance (Å)	Clash overlap (Å)
1:A:108:ALA:HB3	1:A:109:TYR:CD1	2.52	0.43
3:C:160:PHE:N	3:C:160:PHE:CD1	2.84	0.43
1:A:86:GLY:HA2	1:A:87:ASP:HA	1.51	0.43
1:A:123:GLU:O	1:A:125:GLY:N	2.52	0.43
1:A:125:GLY:HA2	1:A:153:ALA:HB3	1.99	0.43
2:B:120:VAL:CB	2:B:121:THR:HA	2.40	0.43
2:B:123:ASP:CB	2:B:125:PHE:CE1	2.80	0.43
3:C:31:ILE:O	3:C:35:GLU:HG3	2.18	0.43
3:C:110:THR:H	3:C:113:LYS:HB2	1.33	0.43
2:B:57:GLU:O	2:B:58:ARG:NH1	2.51	0.43
2:B:99:LYS:NZ	2:B:232:HIS:CG	2.87	0.43
3:C:233:VAL:HG21	3:C:240:LEU:CD2	2.44	0.43
1:A:68:VAL:HG22	2:B:75:MET:HE2	2.00	0.43
1:A:132:THR:HG21	1:A:147:GLY:HA3	1.99	0.43
2:B:81:LEU:C	2:B:238:ARG:HE	2.21	0.43
2:B:169:ASP:OD1	2:B:212:LEU:HD11	2.18	0.43
2:B:174:LEU:HD12	2:B:175:ASP:N	2.34	0.43
1:A:106:PHE:O	1:A:106:PHE:HD1	2.02	0.43
2:B:74:ASP:CA	2:B:75:MET:CB	2.83	0.43
3:C:100:ASN:H	3:C:101:PHE:HA	1.84	0.43
2:B:24:TRP:CD1	2:B:25:THR:HG22	2.54	0.43
2:B:114:MET:CG	2:B:115:VAL:N	2.73	0.43
2:B:159:ARG:CG	2:B:216:GLU:HB3	2.49	0.43
3:C:197:GLN:HB2	3:C:200:GLU:OE1	2.19	0.43
1:A:45:GLU:CB	1:A:46:LYS:HA	2.46	0.43
1:A:173:ARG:NH2	1:A:214:LYS:CB	2.81	0.43
1:A:207:PHE:CB	1:A:208:PHE:C	2.85	0.43
2:B:168:HIS:O	2:B:169:ASP:HB2	2.19	0.43
1:A:27:SER:O	1:A:30:GLU:CB	2.57	0.42
3:C:43:LYS:CB	3:C:49:SER:HB2	2.47	0.42
3:C:62:GLN:OE1	3:C:62:GLN:HA	2.19	0.42
2:B:35:PRO:HA	2:B:38:MET:CG	2.49	0.42
2:B:72:PHE:HD1	2:B:74:ASP:O	2.01	0.42
3:C:140:GLU:HG3	3:C:141:LEU:N	2.34	0.42
1:A:107:PHE:HD1	1:A:108:ALA:N	2.18	0.42
2:B:84:VAL:HA	2:B:236:GLN:HB3	2.01	0.42
2:B:110:ALA:C	2:B:112:GLN:H	2.23	0.42
3:C:30:ILE:O	3:C:33:GLY:CA	2.67	0.42
3:C:110:THR:HG23	3:C:113:LYS:HA	1.73	0.42
3:C:135:LYS:HD2	3:C:138:THR:CG2	2.49	0.42
2:B:44:LEU:CD2	2:B:44:LEU:N	2.83	0.42

Continued on next page...

Continued from previous page...

Atom-1	Atom-2	Interatomic distance (Å)	Clash overlap (Å)
3:C:45:ALA:HA	3:C:46:ASP:HA	1.62	0.42
3:C:187:TYR:CZ	3:C:241:GLY:HA3	2.55	0.42
1:A:101:GLY:HA2	1:A:104:SER:OG	2.19	0.42
1:A:166:ASN:C	1:A:167:LYS:O	2.57	0.42
1:A:211:PRO:HA	1:A:212:ALA:HA	1.77	0.42
3:C:37:GLY:C	3:C:39:GLU:N	2.73	0.42
3:C:56:SER:N	3:C:58:ALA:O	2.51	0.42
3:C:121:LEU:HB2	3:C:265:VAL:HG23	2.00	0.42
3:C:136:ILE:CG2	3:C:137:THR:H	2.05	0.42
1:A:110:PHE:HB2	1:A:170:ARG:CD	2.50	0.42
2:B:57:GLU:HA	2:B:58:ARG:HA	1.72	0.42
2:B:178:ILE:CD1	2:B:178:ILE:H	2.31	0.42
2:B:255:PHE:N	2:B:256:GLN:CA	2.83	0.42
3:C:32:SER:HA	3:C:35:GLU:HB2	2.02	0.42
2:B:52:VAL:HB	2:B:53:ALA:H	1.59	0.42
2:B:54:LEU:HA	2:B:55:VAL:HA	1.55	0.42
2:B:186:SER:HA	2:B:187:ASP:HA	1.68	0.42
3:C:48:ALA:C	3:C:50:ASN:N	2.52	0.42
3:C:118:LEU:C	3:C:119:ILE:HG13	2.40	0.42
2:B:98:ASP:HA	2:B:99:LYS:CB	2.32	0.42
3:C:68:VAL:HG21	3:C:84:PRO:HG2	2.01	0.42
3:C:47:ASP:C	3:C:49:SER:N	2.73	0.42
3:C:195:SER:C	3:C:196:ARG:NH1	2.73	0.42
3:C:59:THR:HB	3:C:60:THR:HA	2.02	0.42
1:A:66:THR:C	2:B:75:MET:HG3	2.24	0.41
1:A:111:THR:HG23	1:A:112:GLY:N	2.35	0.41
1:A:206:PHE:C	1:A:206:PHE:HD1	2.19	0.41
1:A:219:ARG:HE	1:A:219:ARG:H	1.68	0.41
3:C:172:GLN:HG2	3:C:219:GLN:HG3	2.01	0.41
1:A:172:VAL:HG21	1:A:175:ASP:CA	2.50	0.41
2:B:138:PHE:HD1	2:B:205:THR:HG22	1.85	0.41
1:A:133:TYR:CD1	1:A:134:ASP:O	2.70	0.41
3:C:117:LYS:O	3:C:119:ILE:HG13	2.20	0.41
2:B:67:GLY:H	3:C:227:VAL:CG1	2.32	0.41
2:B:212:LEU:HD21	2:B:214:GLN:NE2	2.35	0.41
3:C:98:VAL:CG2	3:C:99:ASP:HB2	2.49	0.41
1:A:117:HIS:C	1:A:157:MET:HB2	2.41	0.41
1:A:134:ASP:CB	1:A:135:THR:O	2.68	0.41
2:B:253:VAL:O	2:B:254:SER:OG	2.37	0.41
3:C:41:ILE:HD12	3:C:41:ILE:N	2.24	0.41
2:B:142:LEU:O	2:B:144:ILE:HG12	2.21	0.41

Continued on next page...

Continued from previous page...

Atom-1	Atom-2	Interatomic distance (Å)	Clash overlap (Å)
2:B:254:SER:N	2:B:255:PHE:HA	2.34	0.41
3:C:123:THR:HB	3:C:124:ALA:H	1.72	0.41
1:A:58:VAL:HG11	2:B:201:TRP:CZ3	2.55	0.41
1:A:167:LYS:C	1:A:169:LEU:HD13	2.41	0.41
2:B:40:MET:HG3	2:B:41:ALA:H	1.85	0.41
2:B:137:TYR:O	2:B:138:PHE:HB3	2.21	0.41
3:C:55:ASN:N	3:C:56:SER:CB	2.82	0.41
1:A:116:ILE:CD1	1:A:133:TYR:CE2	3.01	0.41
3:C:59:THR:N	3:C:60:THR:HA	2.36	0.41
3:C:234:LYS:HD3	3:C:237:SER:HB2	2.03	0.41
1:A:68:VAL:CB	2:B:73:ASP:HA	2.50	0.41
1:A:172:VAL:HG23	1:A:174:HIS:H	1.86	0.41
1:A:210:VAL:O	1:A:210:VAL:HG12	2.21	0.41
2:B:122:LEU:CD1	2:B:132:MET:HG3	2.41	0.41
2:B:132:MET:SD	2:B:205:THR:HB	2.60	0.41
2:B:26:ARG:HA	2:B:27:THR:CB	2.49	0.41
2:B:106:ALA:O	2:B:107:ALA:CB	2.69	0.41
3:C:98:VAL:CG1	3:C:100:ASN:HA	2.36	0.41
3:C:248:TRP:O	3:C:249:THR:HB	2.21	0.41
2:B:41:ALA:N	2:B:42:ASN:HB3	2.36	0.40
2:B:147:SER:OG	2:B:189:SER:HB3	2.22	0.40
3:C:203:SER:O	3:C:205:THR:CA	2.62	0.40
1:A:67:LYS:NZ	1:A:67:LYS:CB	2.73	0.40
2:B:178:ILE:O	2:B:179:TYR:HD1	2.04	0.40
1:A:89:TRP:O	1:A:182:MET:HE1	2.21	0.40
1:A:107:PHE:CD1	1:A:108:ALA:N	2.89	0.40
1:A:144:SER:HA	1:A:148:VAL:CG1	2.51	0.40
1:A:147:GLY:O	1:A:148:VAL:HG12	2.19	0.40
1:A:207:PHE:HB2	1:A:208:PHE:CA	2.51	0.40
2:B:85:MET:O	2:B:89:THR:OG1	2.38	0.40
2:B:97:ILE:HG23	2:B:99:LYS:HB3	2.02	0.40
3:C:46:ASP:C	3:C:48:ALA:N	2.74	0.40
3:C:47:ASP:O	3:C:49:SER:N	2.55	0.40
1:A:114:ILE:HB	1:A:161:VAL:CG1	2.52	0.40
2:B:135:TYR:HD2	2:B:245:PHE:CD2	2.40	0.40
1:A:92:LYS:HB2	1:A:92:LYS:HZ2	1.87	0.40
1:A:97:LYS:HB2	1:A:177:ALA:CB	2.52	0.40
1:A:165:SER:CA	1:A:166:ASN:C	2.84	0.40
1:A:167:LYS:HB3	1:A:169:LEU:CD1	2.35	0.40
2:B:44:LEU:HD22	2:B:44:LEU:N	2.35	0.40
2:B:45:SER:HA	2:B:46:THR:HA	1.55	0.40

Continued on next page...

Continued from previous page...

Atom-1	Atom-2	Interatomic distance (Å)	Clash overlap (Å)
3:C:31:ILE:HG23	3:C:44:VAL:HG21	2.02	0.40
3:C:239:ASP:OD1	3:C:239:ASP:N	2.54	0.40

There are no symmetry-related clashes.

5.3 Torsion angles [i](#)

5.3.1 Protein backbone [i](#)

In the following table, the Percentiles column shows the percent Ramachandran outliers of the chain as a percentile score with respect to all PDB entries followed by that with respect to all EM entries.

The Analysed column shows the number of residues for which the backbone conformation was analysed, and the total number of residues.

Mol	Chain	Analysed	Favoured	Allowed	Outliers	Percentiles	
1	A	196/198 (99%)	124 (63%)	38 (19%)	34 (17%)	0	3
2	B	235/237 (99%)	135 (57%)	65 (28%)	35 (15%)	0	3
3	C	261/263 (99%)	175 (67%)	53 (20%)	33 (13%)	0	5
All	All	692/698 (99%)	434 (63%)	156 (22%)	102 (15%)	0	3

All (102) Ramachandran outliers are listed below:

Mol	Chain	Res	Type
1	A	26	ILE
1	A	63	VAL
1	A	76	TRP
1	A	89	TRP
1	A	111	THR
1	A	114	ILE
1	A	134	ASP
1	A	162	PRO
1	A	163	PHE
1	A	165	SER
1	A	168	PRO
1	A	169	LEU
1	A	172	VAL
1	A	180	PHE
1	A	206	PHE

Continued on next page...

Continued from previous page...

Mol	Chain	Res	Type
1	A	207	PHE
1	A	213	PRO
1	A	214	LYS
1	A	219	ARG
2	B	25	THR
2	B	43	VAL
2	B	45	SER
2	B	48	GLY
2	B	53	ALA
2	B	55	VAL
2	B	57	GLU
2	B	59	ALA
2	B	75	MET
2	B	80	GLN
2	B	109	VAL
2	B	116	HIS
2	B	122	LEU
2	B	177	ALA
2	B	180	THR
2	B	188	ASN
3	C	40	ILE
3	C	44	VAL
3	C	49	SER
3	C	51	LEU
3	C	55	ASN
3	C	56	SER
3	C	62	GLN
3	C	65	ASN
3	C	66	LYS
3	C	68	VAL
3	C	71	ALA
3	C	98	VAL
3	C	99	ASP
3	C	105	ALA
3	C	151	LYS
3	C	153	ALA
3	C	193	ILE
3	C	194	ASP
3	C	197	GLN
3	C	204	LEU
1	A	107	PHE
1	A	124	GLN

Continued on next page...

Continued from previous page...

Mol	Chain	Res	Type
1	A	135	THR
1	A	149	ILE
1	A	164	TYR
1	A	218	SER
2	B	54	LEU
2	B	107	ALA
2	B	172	LEU
3	C	36	VAL
3	C	72	THR
3	C	119	ILE
3	C	191	PRO
1	A	108	ALA
1	A	220	ALA
2	B	26	ARG
2	B	42	ASN
2	B	74	ASP
2	B	92	SER
2	B	111	PRO
2	B	113	ASN
2	B	117	ARG
2	B	124	GLN
3	C	126	TRP
3	C	135	LYS
3	C	189	PRO
3	C	203	SER
1	A	69	ASP
1	A	170	ARG
1	A	173	ARG
2	B	47	THR
2	B	121	THR
2	B	190	PHE
3	C	196	ARG
1	A	90	ARG
2	B	52	VAL
2	B	126	PRO
2	B	137	TYR
3	C	48	ALA
3	C	208	PRO
1	A	178	LEU
2	B	40	MET
2	B	79	ALA
1	A	68	VAL

Continued on next page...

Continued from previous page...

Mol	Chain	Res	Type
3	C	136	ILE
1	A	167	LYS
3	C	54	PRO

5.3.2 Protein sidechains [i](#)

In the following table, the Percentiles column shows the percent sidechain outliers of the chain as a percentile score with respect to all PDB entries followed by that with respect to all EM entries.

The Analysed column shows the number of residues for which the sidechain conformation was analysed, and the total number of residues.

Mol	Chain	Analysed	Rotameric	Outliers	Percentiles	
1	A	172/172 (100%)	148 (86%)	24 (14%)	3	19
2	B	208/208 (100%)	181 (87%)	27 (13%)	4	21
3	C	230/230 (100%)	205 (89%)	25 (11%)	6	26
All	All	610/610 (100%)	534 (88%)	76 (12%)	8	22

All (76) residues with a non-rotameric sidechain are listed below:

Mol	Chain	Res	Type
1	A	27	SER
1	A	29	ASN
1	A	50	PHE
1	A	67	LYS
1	A	69	ASP
1	A	76	TRP
1	A	77	TYR
1	A	91	GLN
1	A	92	LYS
1	A	106	PHE
1	A	113	GLU
1	A	123	GLU
1	A	133	TYR
1	A	163	PHE
1	A	164	TYR
1	A	167	LYS
1	A	169	LEU
1	A	170	ARG
1	A	171	THR

Continued on next page...

Continued from previous page...

Mol	Chain	Res	Type
1	A	175	ASP
1	A	206	PHE
1	A	208	PHE
1	A	218	SER
1	A	219	ARG
2	B	22	TYR
2	B	24	TRP
2	B	26	ARG
2	B	37	THR
2	B	44	LEU
2	B	52	VAL
2	B	58	ARG
2	B	70	SER
2	B	75	MET
2	B	90	THR
2	B	92	SER
2	B	112	GLN
2	B	113	ASN
2	B	114	MET
2	B	115	VAL
2	B	116	HIS
2	B	120	VAL
2	B	122	LEU
2	B	123	ASP
2	B	141	SER
2	B	142	LEU
2	B	178	ILE
2	B	179	TYR
2	B	189	SER
2	B	190	PHE
2	B	201	TRP
2	B	252	LEU
3	C	39	GLU
3	C	41	ILE
3	C	42	THR
3	C	44	VAL
3	C	46	ASP
3	C	47	ASP
3	C	50	ASN
3	C	52	LEU
3	C	67	ASP
3	C	69	VAL

Continued on next page...

Continued from previous page...

Mol	Chain	Res	Type
3	C	99	ASP
3	C	100	ASN
3	C	103	SER
3	C	104	MET
3	C	136	ILE
3	C	150	ARG
3	C	151	LYS
3	C	188	GLU
3	C	194	ASP
3	C	196	ARG
3	C	203	SER
3	C	204	LEU
3	C	209	HIS
3	C	239	ASP
3	C	240	LEU

Sometimes sidechains can be flipped to improve hydrogen bonding and reduce clashes. All (10) such sidechains are listed below:

Mol	Chain	Res	Type
1	A	117	HIS
1	A	174	HIS
1	A	205	ASN
2	B	129	ASN
2	B	206	HIS
3	C	50	ASN
3	C	55	ASN
3	C	102	HIS
3	C	209	HIS
3	C	213	ASN

5.3.3 RNA [i](#)

There are no RNA molecules in this entry.

5.4 Non-standard residues in protein, DNA, RNA chains [i](#)

There are no non-standard protein/DNA/RNA residues in this entry.

5.5 Carbohydrates [i](#)

There are no monosaccharides in this entry.

5.6 Ligand geometry [i](#)

There are no ligands in this entry.

5.7 Other polymers [i](#)

There are no such residues in this entry.

5.8 Polymer linkage issues [i](#)

The following chains have linkage breaks:

Mol	Chain	Number of breaks
3	C	1

All chain breaks are listed below:

Model	Chain	Residue-1	Atom-1	Residue-2	Atom-2	Distance (Å)
1	C	118:LEU	C	119:ILE	N	0.67

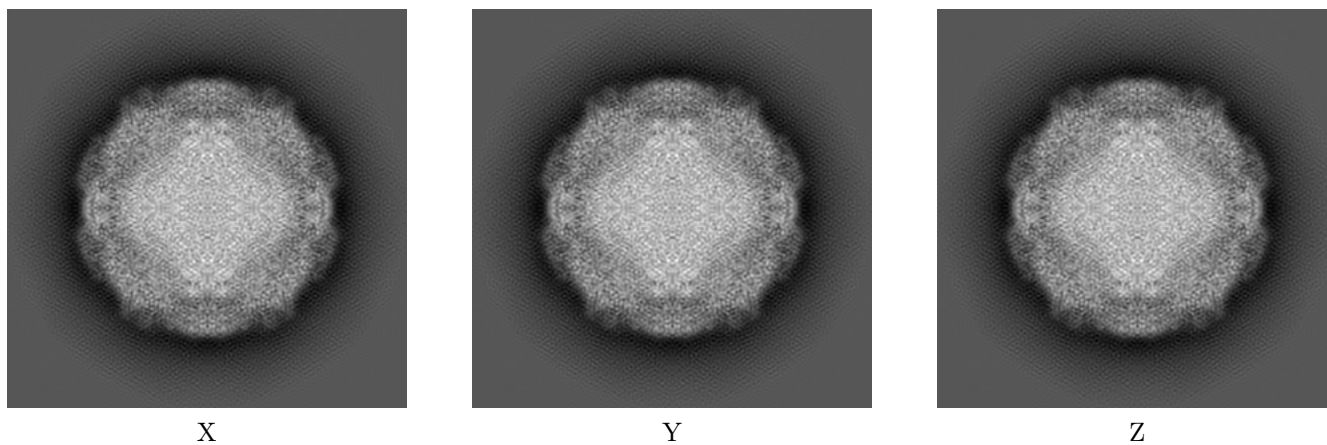
6 Map visualisation [i](#)

This section contains visualisations of the EMDB entry EMD-3137. These allow visual inspection of the internal detail of the map and identification of artifacts.

No raw map or half-maps were deposited for this entry and therefore no images, graphs, etc. pertaining to the raw map can be shown.

6.1 Orthogonal projections [i](#)

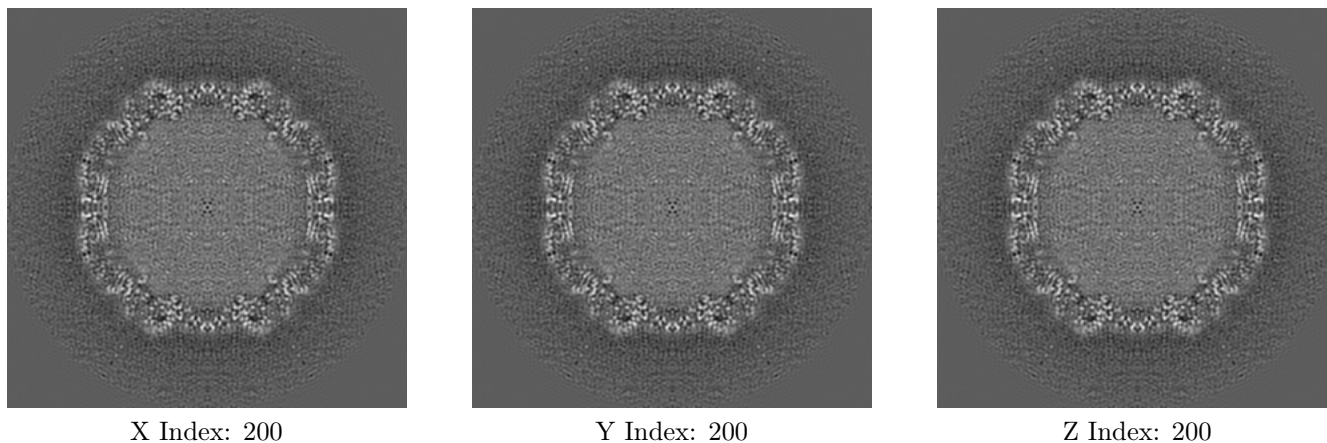
6.1.1 Primary map



The images above show the map projected in three orthogonal directions.

6.2 Central slices [i](#)

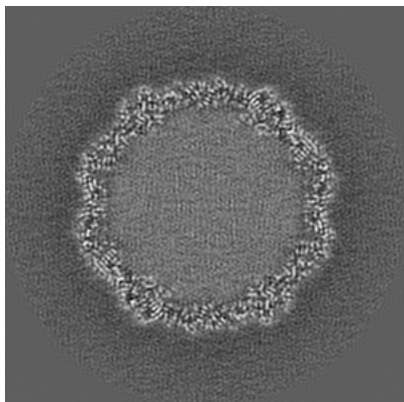
6.2.1 Primary map



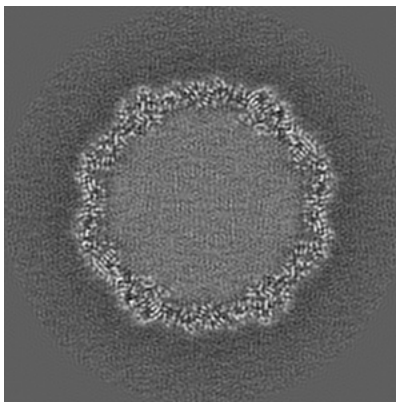
The images above show central slices of the map in three orthogonal directions.

6.3 Largest variance slices [i](#)

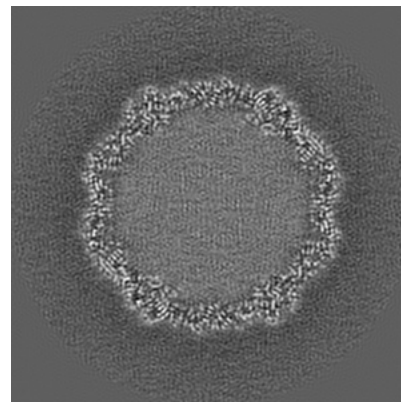
6.3.1 Primary map



X Index: 217



Y Index: 217



Z Index: 217

The images above show the largest variance slices of the map in three orthogonal directions.

6.4 Orthogonal surface views [i](#)

6.4.1 Primary map



X



Y



Z

The images above show the 3D surface view of the map at the recommended contour level 0.05. These images, in conjunction with the slice images, may facilitate assessment of whether an appropriate contour level has been provided.

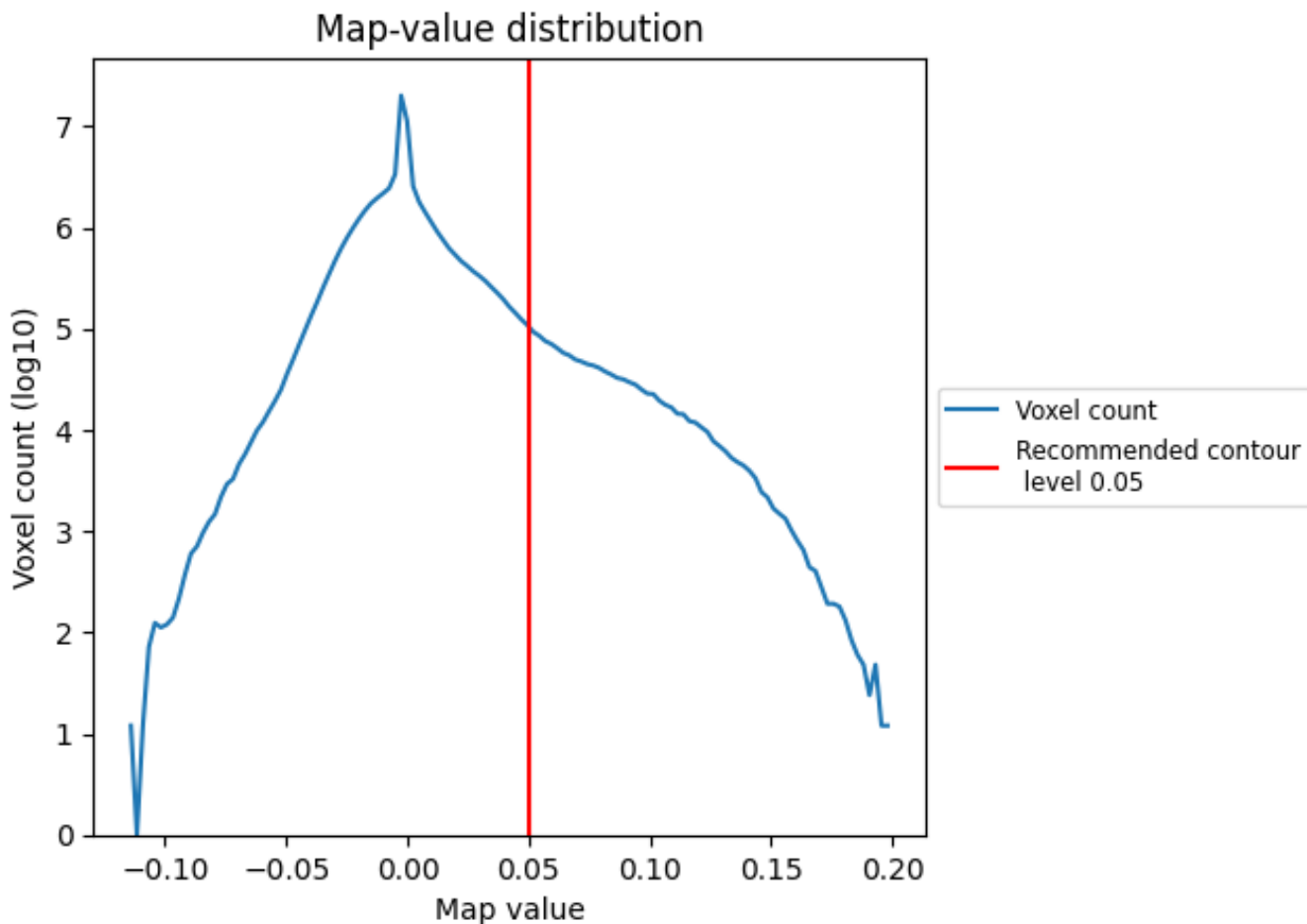
6.5 Mask visualisation

This section was not generated. No masks/segmentation were deposited.

7 Map analysis [i](#)

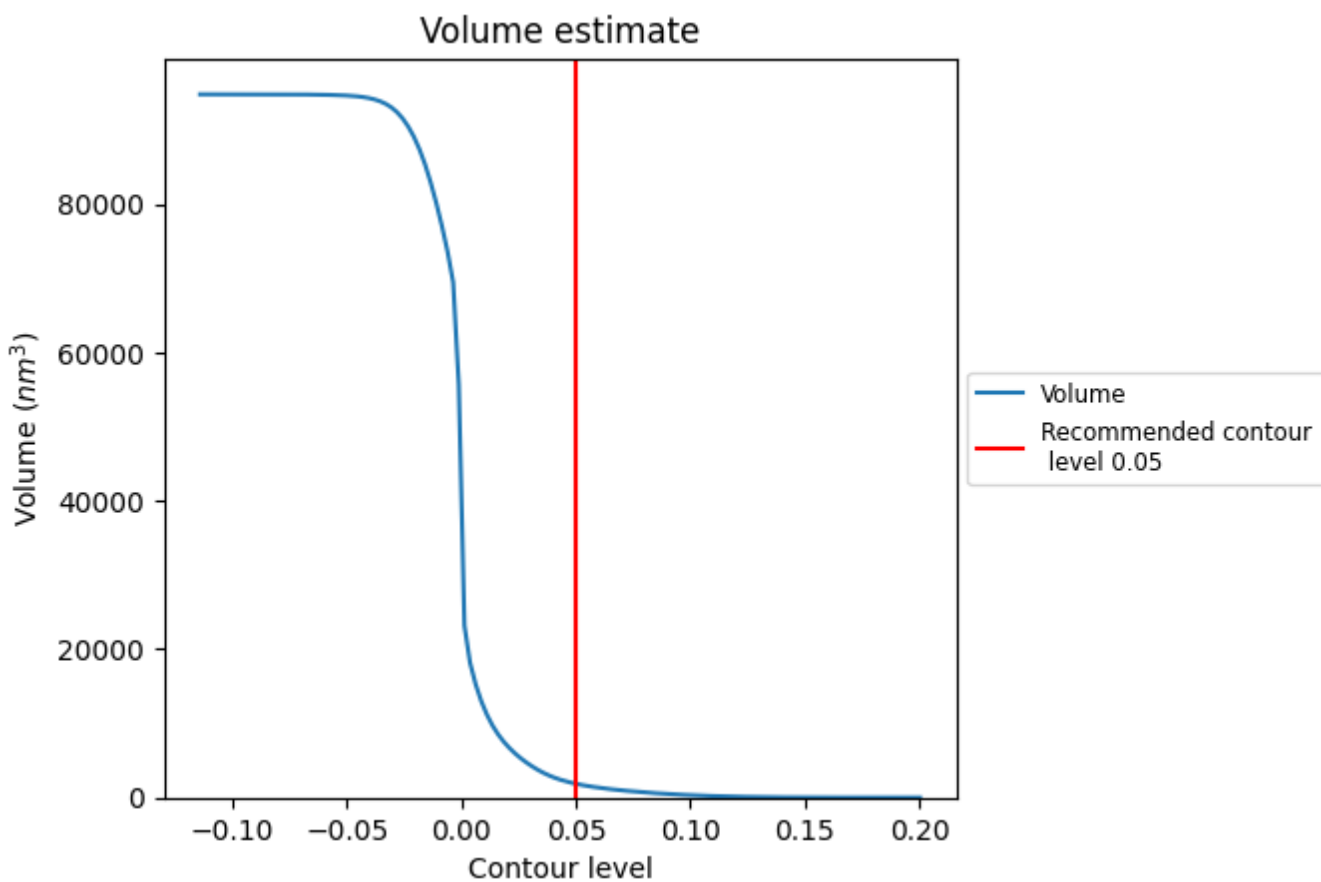
This section contains the results of statistical analysis of the map.

7.1 Map-value distribution [i](#)



The map-value distribution is plotted in 128 intervals along the x-axis. The y-axis is logarithmic. A spike in this graph at zero usually indicates that the volume has been masked.

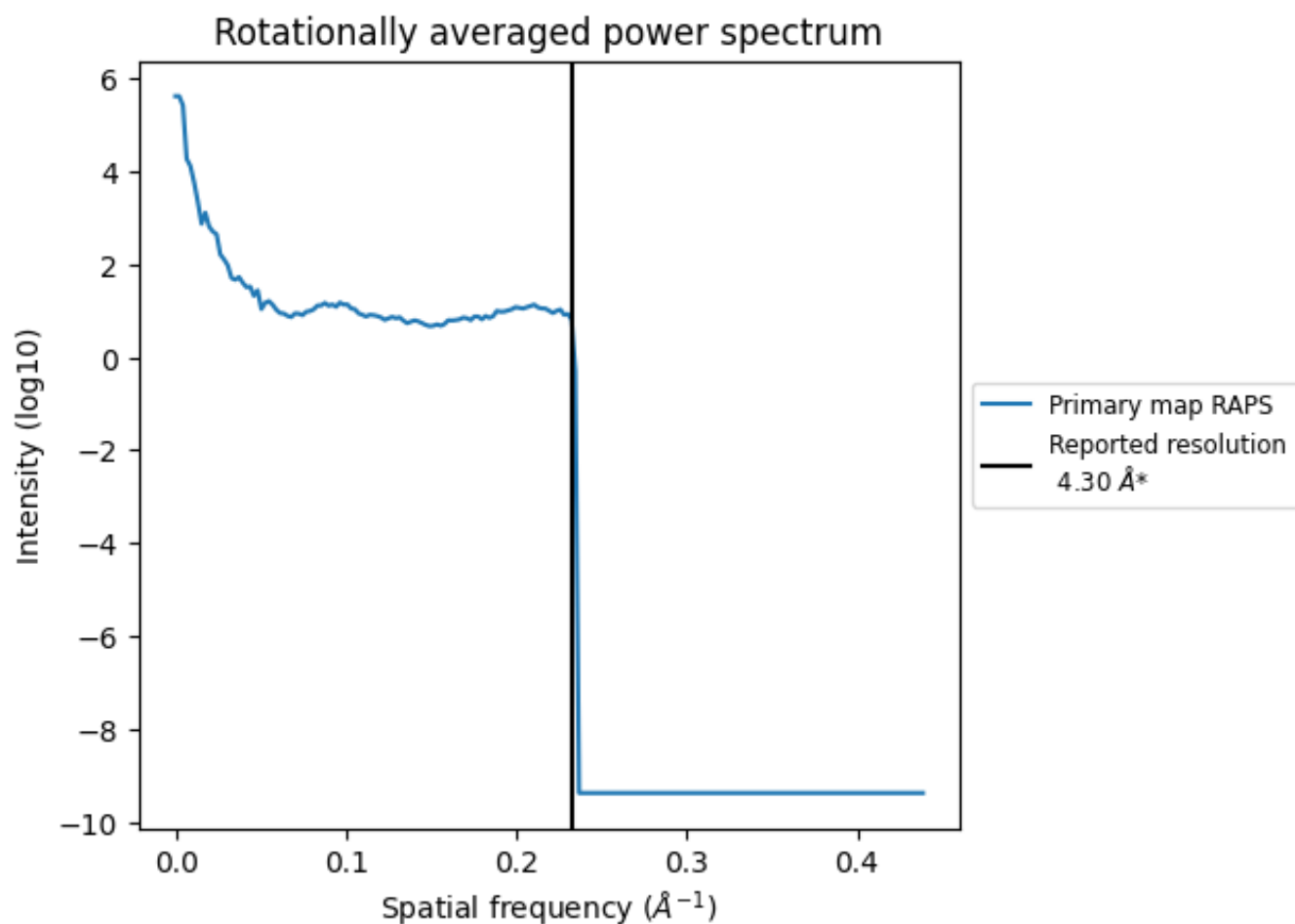
7.2 Volume estimate [i](#)



The volume at the recommended contour level is 1867 nm³; this corresponds to an approximate mass of 1686 kDa.

The volume estimate graph shows how the enclosed volume varies with the contour level. The recommended contour level is shown as a vertical line and the intersection between the line and the curve gives the volume of the enclosed surface at the given level.

7.3 Rotationally averaged power spectrum [\(i\)](#)

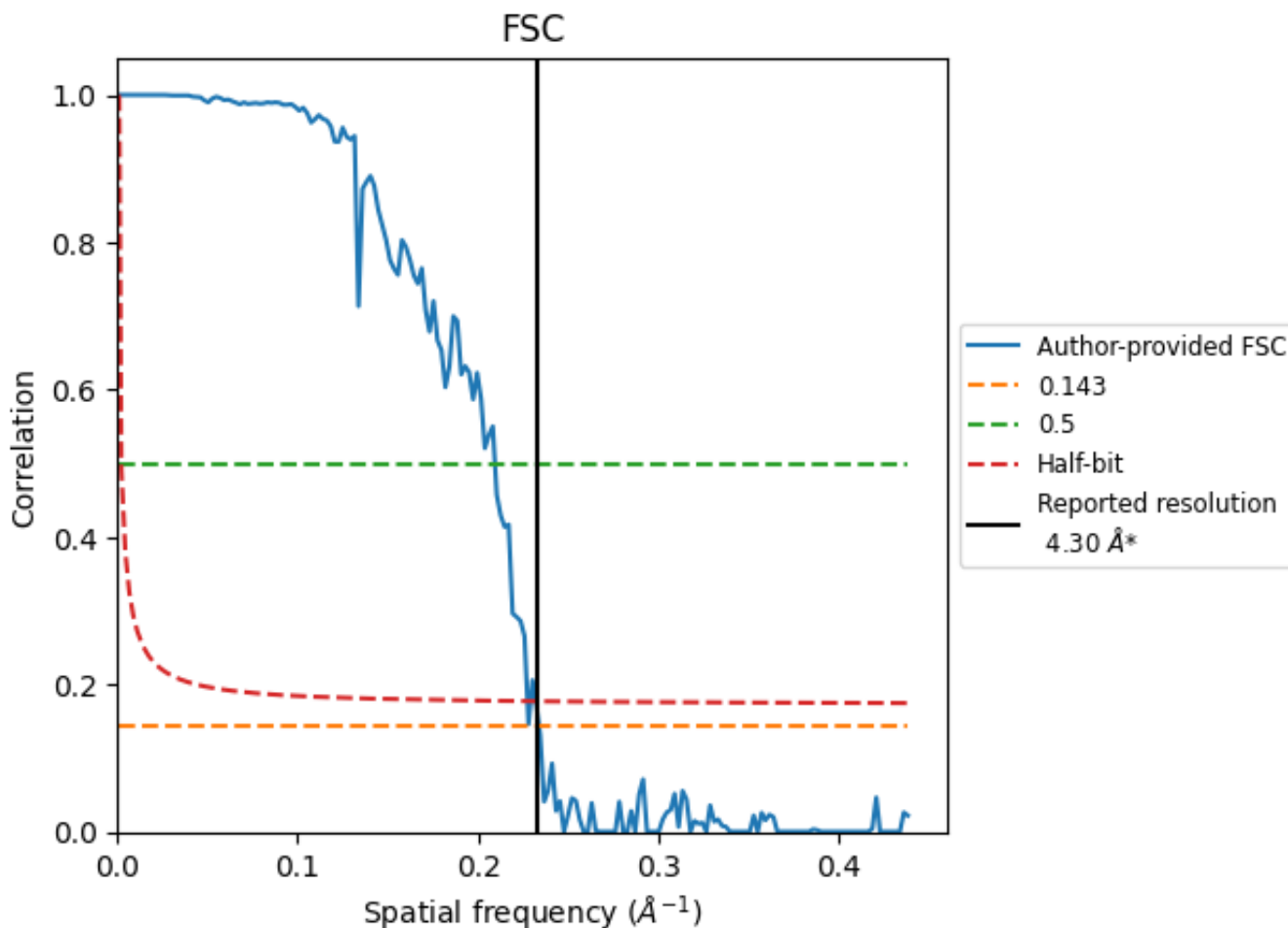


*Reported resolution corresponds to spatial frequency of 0.233 Å⁻¹

8 Fourier-Shell correlation [i](#)

Fourier-Shell Correlation (FSC) is the most commonly used method to estimate the resolution of single-particle and subtomogram-averaged maps. The shape of the curve depends on the imposed symmetry, mask and whether or not the two 3D reconstructions used were processed from a common reference. The reported resolution is shown as a black line. A curve is displayed for the half-bit criterion in addition to lines showing the 0.143 gold standard cut-off and 0.5 cut-off.

8.1 FSC [i](#)



*Reported resolution corresponds to spatial frequency of 0.233 Å⁻¹

8.2 Resolution estimates [i](#)

Resolution estimate (Å)	Estimation criterion (FSC cut-off)		
	0.143	0.5	Half-bit
Reported by author	-	-	-
Author-provided FSC curve	4.27	4.77	4.40
Unmasked-calculated*	-	-	-

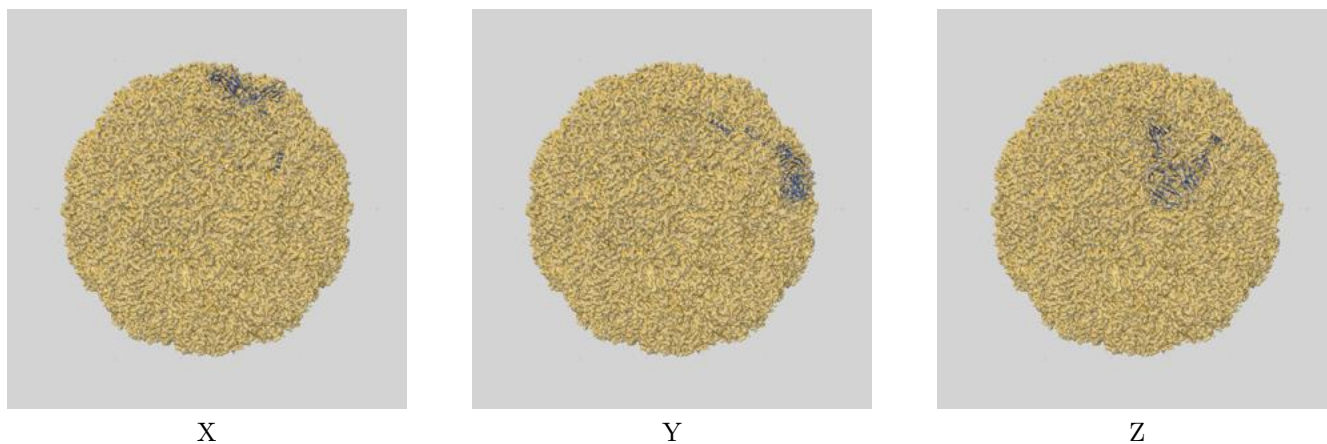
*Resolution estimate based on FSC curve calculated by comparison of deposited half-maps.

9 Map-model fit [i](#)

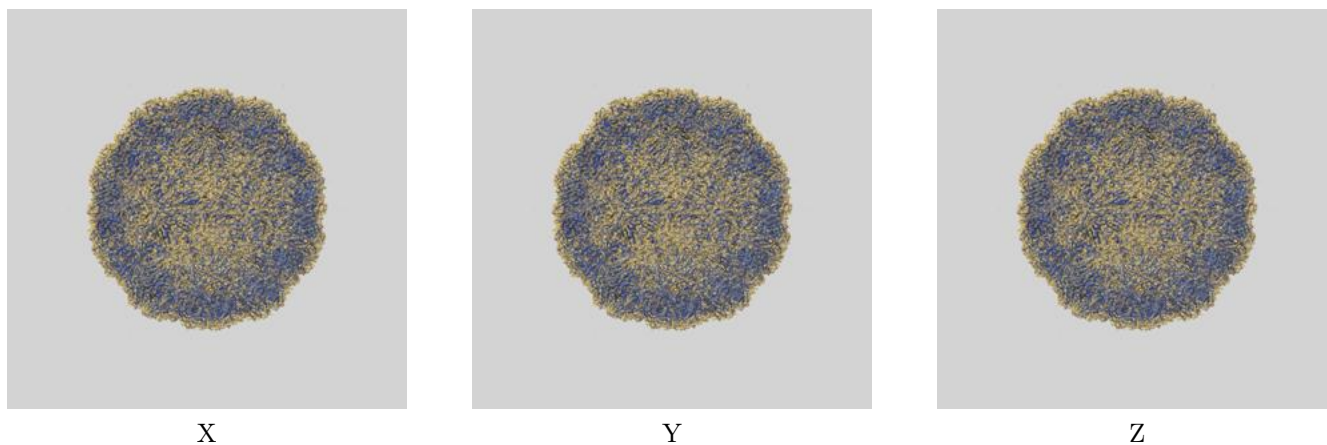
This section contains information regarding the fit between EMDB map EMD-3137 and PDB model 5APM. Per-residue inclusion information can be found in section 3 on page 4.

9.1 Map-model overlays

9.1.1 Map-model overlay [i](#)

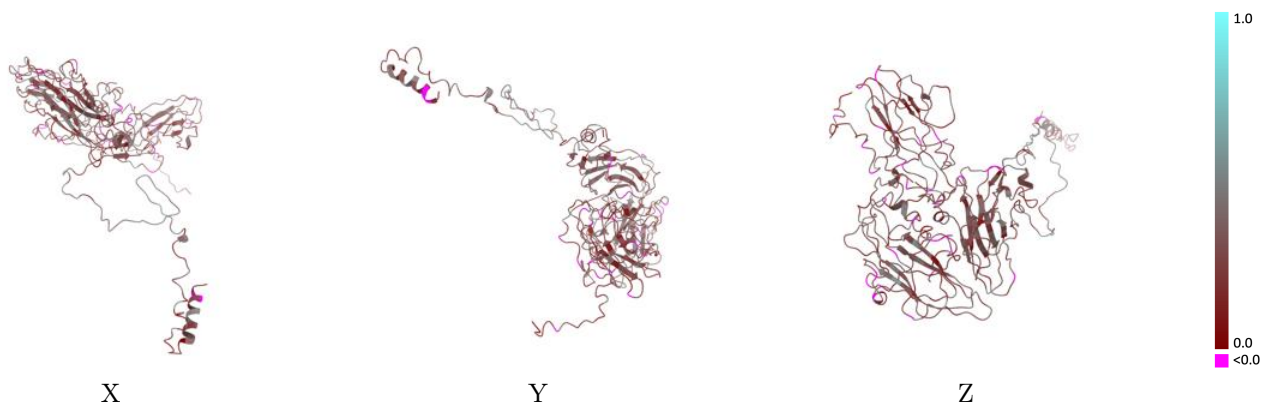


9.1.2 Map-model assembly overlay [i](#)



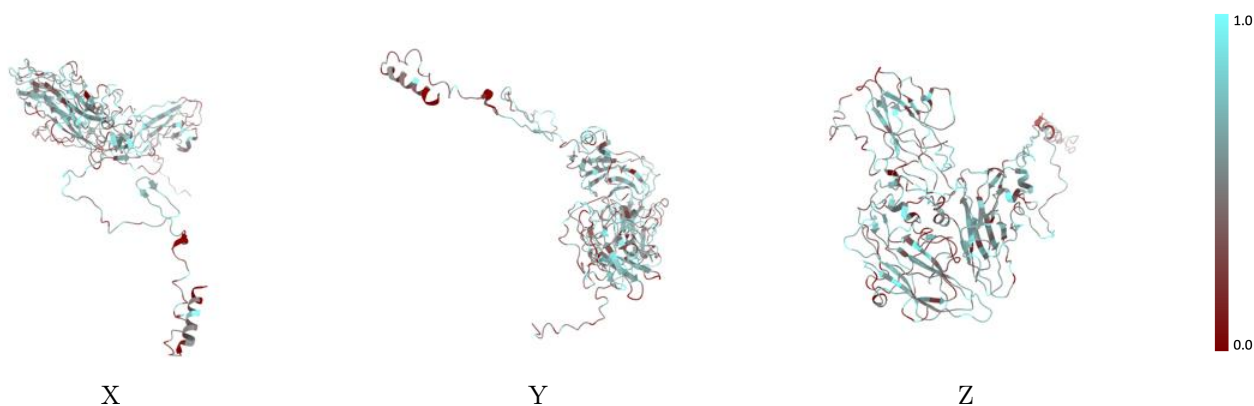
The images above show the 3D surface view of the map at the recommended contour level 0.05 at 50% transparency in yellow overlaid with a ribbon representation of the model coloured in blue. These images allow for the visual assessment of the quality of fit between the atomic model and the map.

9.2 Q-score mapped to coordinate model [i](#)



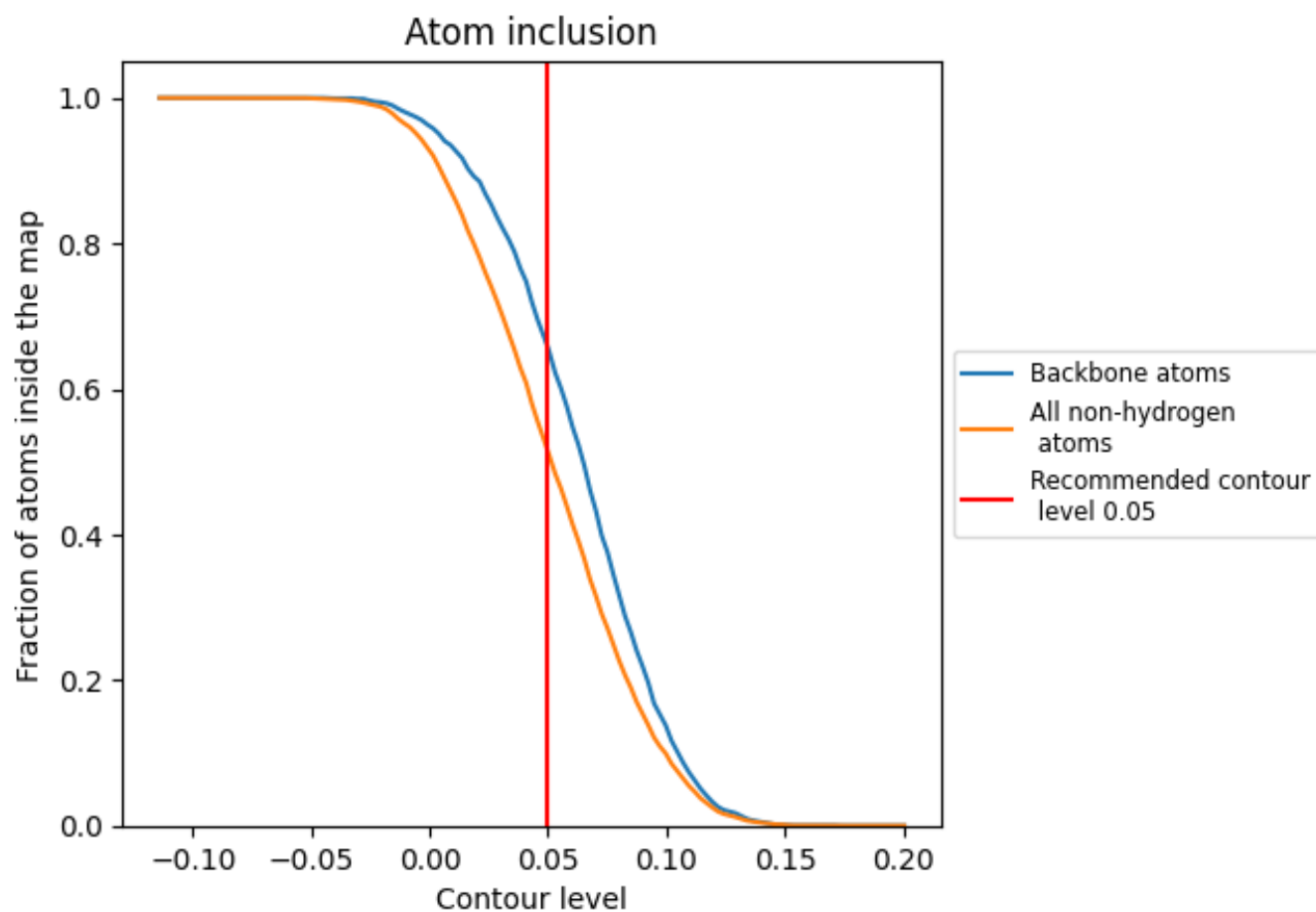
The images above show the model with each residue coloured according to its Q-score. This shows their resolvability in the map with higher Q-score values reflecting better resolvability. Please note: Q-score is calculating the resolvability of atoms, and thus high values are only expected at resolutions at which atoms can be resolved. Low Q-score values may therefore be expected for many entries.

9.3 Atom inclusion mapped to coordinate model [i](#)



The images above show the model with each residue coloured according to its atom inclusion. This shows to what extent they are inside the map at the recommended contour level (0.05).









9.4 Atom inclusion [i](#)



At the recommended contour level, 66% of all backbone atoms, 51% of all non-hydrogen atoms, are inside the map.

9.5 Map-model fit summary

The table lists the average atom inclusion at the recommended contour level (0.05) and Q-score for the entire model and for each chain.

Chain	Atom inclusion	Q-score
All	 0.5137	 0.2810
A	 0.4877	 0.2500
B	 0.5215	 0.2750
C	 0.5266	 0.3110

