



## Full wwPDB X-ray Structure Validation Report

Jan 4, 2024 – 12:52 am GMT

PDB ID : 5AJR  
Title : Sterol 14-alpha demethylase (CYP51) from Trypanosoma cruzi in complex with the 1-tetrazole derivative VT-1161 ((R)-2-(2,4-Difluorophenyl)-1, 1-difluoro-3-(1H-tetrazol-1-yl)-1-(5-(4-(2,2,2-trifluoroethoxy)phenyl) pyridin-2-yl)propan-2-ol)  
Authors : Wawrzak, Z.; Hoekstra, W.; I Lepesheva, G.  
Deposited on : 2015-02-26  
Resolution : 2.75 Å(reported)

This is a Full wwPDB X-ray Structure Validation Report for a publicly released PDB entry.

We welcome your comments at [validation@mail.wwpdb.org](mailto:validation@mail.wwpdb.org)

A user guide is available at

<https://www.wwpdb.org/validation/2017/XrayValidationReportHelp>

with specific help available everywhere you see the  symbol.

The types of validation reports are described at

<http://www.wwpdb.org/validation/2017/FAQs#types>.

---

The following versions of software and data (see [references](#) ①) were used in the production of this report:

MolProbity : 4.02b-467  
Mogul : 1.8.4, CSD as541be (2020)  
Xtrriage (Phenix) : 1.13  
EDS : 2.36  
buster-report : 1.1.7 (2018)  
Percentile statistics : 20191225.v01 (using entries in the PDB archive December 25th 2019)  
Refmac : 5.8.0158  
CCP4 : 7.0.044 (Gargrove)  
Ideal geometry (proteins) : Engh & Huber (2001)  
Ideal geometry (DNA, RNA) : Parkinson et al. (1996)  
Validation Pipeline (wwPDB-VP) : 2.36

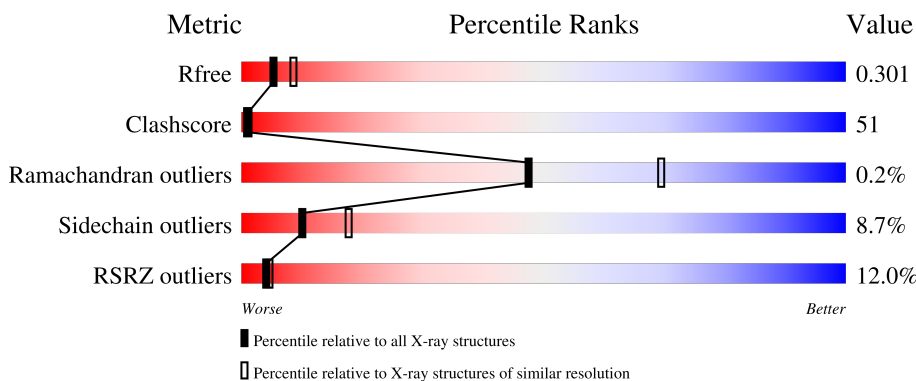
# 1 Overall quality at a glance

The following experimental techniques were used to determine the structure:

*X-RAY DIFFRACTION*

The reported resolution of this entry is 2.75 Å.

Percentile scores (ranging between 0-100) for global validation metrics of the entry are shown in the following graphic. The table shows the number of entries on which the scores are based.



Metric	Whole archive (#Entries)	Similar resolution (#Entries, resolution range(Å))
$R_{free}$	130704	1235 (2.78-2.74)
Clashscore	141614	1277 (2.78-2.74)
Ramachandran outliers	138981	1257 (2.78-2.74)
Sidechain outliers	138945	1257 (2.78-2.74)
RSRZ outliers	127900	1207 (2.78-2.74)

The table below summarises the geometric issues observed across the polymeric chains and their fit to the electron density. The red, orange, yellow and green segments of the lower bar indicate the fraction of residues that contain outliers for  $\geq 3$ , 2, 1 and 0 types of geometric quality criteria respectively. A grey segment represents the fraction of residues that are not modelled. The numeric value for each fraction is indicated below the corresponding segment, with a dot representing fractions  $\leq 5\%$ . The upper red bar (where present) indicates the fraction of residues that have poor fit to the electron density. The numeric value is given above the bar.

Mol	Chain	Length	Quality of chain
1	A	460	

The following table lists non-polymeric compounds, carbohydrate monomers and non-standard residues in protein, DNA, RNA chains that are outliers for geometric or electron-density-fit criteria:

Mol	Type	Chain	Res	Chirality	Geometry	Clashes	Electron density
3	VT1	A	1480	-	-	X	-

## 2 Entry composition

There are 3 unique types of molecules in this entry. The entry contains 3672 atoms, of which 0 are hydrogens and 0 are deuteriums.

In the tables below, the ZeroOcc column contains the number of atoms modelled with zero occupancy, the AltConf column contains the number of residues with at least one atom in alternate conformation and the Trace column contains the number of residues modelled with at most 2 atoms.

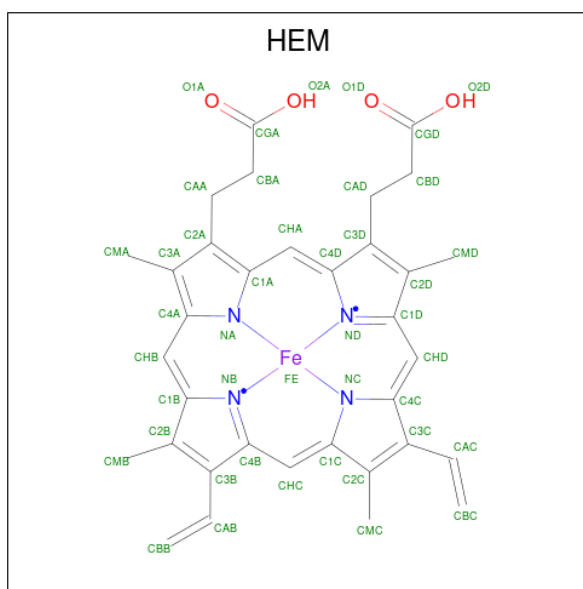
- Molecule 1 is a protein called STEROL 14-ALPHA DEMETHYLASE.

Mol	Chain	Residues	Atoms					ZeroOcc	AltConf	Trace
			Total	C	N	O	S			
1	A	449	3592	2294	630	640	28	0	0	0

There are 10 discrepancies between the modelled and reference sequences:

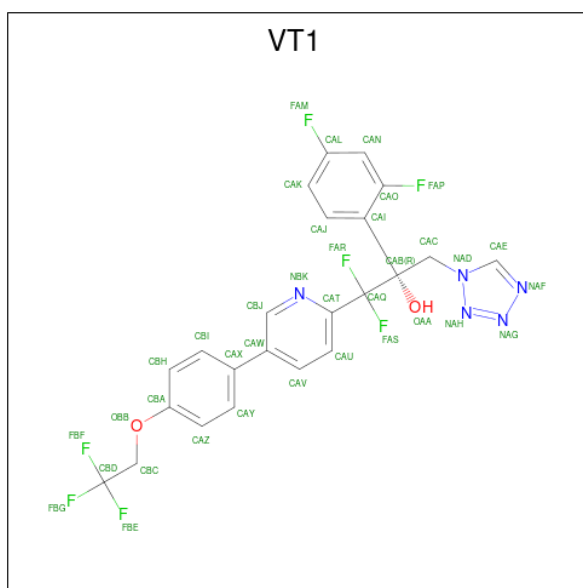
Chain	Residue	Modelled	Actual	Comment	Reference
A	28	ALA	-	expression tag	UNP Q7Z1V1
A	29	LYS	-	expression tag	UNP Q7Z1V1
A	30	LYS	-	expression tag	UNP Q7Z1V1
A	31	THR	-	expression tag	UNP Q7Z1V1
A	482	HIS	-	expression tag	UNP Q7Z1V1
A	483	HIS	-	expression tag	UNP Q7Z1V1
A	484	HIS	-	expression tag	UNP Q7Z1V1
A	485	HIS	-	expression tag	UNP Q7Z1V1
A	486	HIS	-	expression tag	UNP Q7Z1V1
A	487	HIS	-	expression tag	UNP Q7Z1V1

- Molecule 2 is PROTOPORPHYRIN IX CONTAINING FE (three-letter code: HEM) (formula:  $C_{34}H_{32}FeN_4O_4$ ).



Mol	Chain	Residues	Atoms					ZeroOcc	AltConf
			Total	C	Fe	N	O		
2	A	1	43	34	1	4	4	0	0

- Molecule 3 is (R)-2-(2,4-Difluorophenyl)-1,1-difluoro-3-(1H-tetrazol-1-yl)-1-(5-(4-(2,2,2-trifluoroethoxy)phenyl)pyridin-2-yl)propan-2-ol (three-letter code: VT1) (formula:  $C_{23}H_{16}F_7N_5O_2$ ).



Mol	Chain	Residues	Atoms					ZeroOcc	AltConf
			Total	C	F	N	O		
3	A	1	37	23	7	5	2	0	0

### 3 Residue-property plots i

These plots are drawn for all protein, RNA, DNA and oligosaccharide chains in the entry. The first graphic for a chain summarises the proportions of the various outlier classes displayed in the second graphic. The second graphic shows the sequence view annotated by issues in geometry and electron density. Residues are color-coded according to the number of geometric quality criteria for which they contain at least one outlier: green = 0, yellow = 1, orange = 2 and red = 3 or more. A red dot above a residue indicates a poor fit to the electron density ( $RSRZ > 2$ ). Stretches of 2 or more consecutive residues without any outlier are shown as a green connector. Residues present in the sample, but not in the model, are shown in grey.

#### • Molecule 1: STEROL 14-ALPHA DEMETHYLASE



## 4 Data and refinement statistics

Property	Value	Source
Space group	P 31 2 1	Depositor
Cell constants a, b, c, $\alpha$ , $\beta$ , $\gamma$	63.06Å 63.06Å 221.75Å 90.00° 90.00° 120.00°	Depositor
Resolution (Å)	54.61 – 2.75 54.61 – 2.75	Depositor EDS
% Data completeness (in resolution range)	99.8 (54.61-2.75) 99.8 (54.61-2.75)	Depositor EDS
$R_{merge}$	0.07	Depositor
$R_{sym}$	(Not available)	Depositor
$\langle I/\sigma(I) \rangle$ <sup>1</sup>	2.97 (at 2.77Å)	Xtrriage
Refinement program	REFMAC 5.8.0103	Depositor
R, $R_{free}$	0.266 , 0.274 0.264 , 0.301	Depositor DCC
$R_{free}$ test set	691 reflections (4.93%)	wwPDB-VP
Wilson B-factor (Å <sup>2</sup> )	102.4	Xtrriage
Anisotropy	0.067	Xtrriage
Bulk solvent $k_{sol}$ (e/Å <sup>3</sup> ), $B_{sol}$ (Å <sup>2</sup> )	0.28 , 74.9	EDS
L-test for twinning <sup>2</sup>	$\langle  L  \rangle = 0.48$ , $\langle L^2 \rangle = 0.31$	Xtrriage
Estimated twinning fraction	0.047 for -h,-k,l	Xtrriage
$F_o, F_c$ correlation	0.93	EDS
Total number of atoms	3672	wwPDB-VP
Average B, all atoms (Å <sup>2</sup> )	118.0	wwPDB-VP

Xtrriage's analysis on translational NCS is as follows: *The largest off-origin peak in the Patterson function is 5.02% of the height of the origin peak. No significant pseudotranslation is detected.*

<sup>1</sup>Intensities estimated from amplitudes.

<sup>2</sup>Theoretical values of  $\langle |L| \rangle$ ,  $\langle L^2 \rangle$  for acentric reflections are 0.5, 0.333 respectively for untwinned datasets, and 0.375, 0.2 for perfectly twinned datasets.

## 5 Model quality [i](#)

### 5.1 Standard geometry [i](#)

Bond lengths and bond angles in the following residue types are not validated in this section: VT1, HEM

The Z score for a bond length (or angle) is the number of standard deviations the observed value is removed from the expected value. A bond length (or angle) with  $|Z| > 5$  is considered an outlier worth inspection. RMSZ is the root-mean-square of all Z scores of the bond lengths (or angles).

Mol	Chain	Bond lengths		Bond angles	
		RMSZ	# Z  >5	RMSZ	# Z  >5
1	A	0.24	0/3675	0.46	0/4964

There are no bond length outliers.

There are no bond angle outliers.

There are no chirality outliers.

There are no planarity outliers.

### 5.2 Too-close contacts [i](#)

In the following table, the Non-H and H(model) columns list the number of non-hydrogen atoms and hydrogen atoms in the chain respectively. The H(added) column lists the number of hydrogen atoms added and optimized by MolProbity. The Clashes column lists the number of clashes within the asymmetric unit, whereas Symm-Clashes lists symmetry-related clashes.

Mol	Chain	Non-H	H(model)	H(added)	Clashes	Symm-Clashes
1	A	3592	0	3624	367	0
2	A	43	0	30	13	0
3	A	37	0	16	9	0
All	All	3672	0	3670	377	0

The all-atom clashscore is defined as the number of clashes found per 1000 atoms (including hydrogen atoms). The all-atom clashscore for this structure is 51.

All (377) close contacts within the same asymmetric unit are listed below, sorted by their clash magnitude.

Atom-1	Atom-2	Interatomic distance (Å)	Clash overlap (Å)
1:A:33:PRO:CG	1:A:63:LEU:HD21	1.46	1.44

*Continued on next page...*



*Continued from previous page...*

Atom-1	Atom-2	Interatomic distance (Å)	Clash overlap (Å)
1:A:224:PRO:HG2	1:A:225:GLN:NE2	1.36	1.37
1:A:218:LEU:HD23	1:A:219:LEU:CD2	1.66	1.25
1:A:218:LEU:CD2	1:A:219:LEU:HD22	1.64	1.23
1:A:212:ALA:CB	1:A:219:LEU:HD21	1.65	1.23
1:A:212:ALA:HB1	1:A:219:LEU:CD2	1.69	1.22
1:A:33:PRO:HG2	1:A:63:LEU:CD2	1.73	1.18
1:A:293:GLN:O	1:A:297:THR:HG22	1.45	1.17
1:A:104:THR:O	1:A:107:THR:HG23	1.41	1.15
1:A:102:VAL:O	1:A:213:VAL:HG13	1.43	1.14
1:A:218:LEU:CD2	1:A:219:LEU:CD2	2.26	1.10
1:A:203:LYS:HD2	1:A:232:ALA:HB2	1.35	1.09
1:A:358:MET:HB3	1:A:360:MET:HE3	1.34	1.07
1:A:103:TYR:HD2	1:A:116:TYR:CE2	1.73	1.07
1:A:103:TYR:CD2	1:A:116:TYR:CE2	2.44	1.06
1:A:102:VAL:HG13	1:A:213:VAL:HG11	1.29	1.05
1:A:212:ALA:HB1	1:A:219:LEU:HD21	1.19	1.05
1:A:446:GLN:O	1:A:471:VAL:HG13	1.57	1.03
1:A:358:MET:HE1	1:A:381:ALA:CB	1.90	1.01
1:A:102:VAL:HG13	1:A:213:VAL:CG1	1.92	0.99
1:A:224:PRO:CG	1:A:225:GLN:HE22	1.76	0.99
1:A:102:VAL:CG1	1:A:213:VAL:HG11	1.91	0.99
1:A:209:ILE:CD1	1:A:218:LEU:HD21	1.91	0.99
1:A:209:ILE:HD13	1:A:218:LEU:HD21	1.01	0.98
1:A:358:MET:CE	1:A:381:ALA:HB1	1.93	0.98
1:A:33:PRO:CG	1:A:63:LEU:CD2	2.39	0.98
1:A:224:PRO:CG	1:A:225:GLN:NE2	2.27	0.97
1:A:75:GLN:HE21	1:A:76:ARG:N	1.64	0.94
1:A:209:ILE:HD13	1:A:218:LEU:CD2	1.95	0.93
1:A:316:LEU:HD12	1:A:316:LEU:O	1.70	0.92
1:A:82:ASP:OD2	1:A:85:GLU:HG2	1.68	0.92
1:A:33:PRO:HG3	1:A:63:LEU:HD21	1.52	0.91
1:A:106:MET:HB3	1:A:110:PHE:CD2	2.03	0.91
1:A:106:MET:HB3	1:A:110:PHE:CE2	2.04	0.91
1:A:224:PRO:HG2	1:A:225:GLN:CD	1.92	0.89
2:A:1479:HEM:HBB2	2:A:1479:HEM:HMB2	1.53	0.88
2:A:1479:HEM:HBC2	2:A:1479:HEM:HMC2	1.54	0.88
1:A:212:ALA:HB2	1:A:219:LEU:HD21	1.55	0.86
1:A:106:MET:CG	1:A:110:PHE:CE2	2.59	0.86
1:A:449:ARG:CZ	1:A:468:GLN:OE1	2.24	0.86
1:A:218:LEU:HD23	1:A:219:LEU:HD22	0.86	0.85
1:A:308:MET:SD	1:A:445:PHE:HB3	2.17	0.84

*Continued on next page...*

*Continued from previous page...*

Atom-1	Atom-2	Interatomic distance (Å)	Clash overlap (Å)
1:A:192:LEU:HD12	1:A:193:ASN:N	1.94	0.83
1:A:89:PHE:HE1	1:A:361:ARG:CZ	1.90	0.83
1:A:224:PRO:HG2	1:A:225:GLN:HE22	1.00	0.82
1:A:33:PRO:HG2	1:A:63:LEU:HD21	0.83	0.82
1:A:250:GLU:HG2	1:A:255:ASP:OD2	1.80	0.82
1:A:94:ASN:HA	1:A:97:LEU:O	1.80	0.82
1:A:385:LEU:O	1:A:389:HIS:HD2	1.62	0.81
1:A:212:ALA:HB1	1:A:219:LEU:HD23	1.60	0.81
1:A:116:TYR:HD1	1:A:123:MET:HE3	1.44	0.81
1:A:98:SER:HB3	1:A:120:TYR:OH	1.79	0.81
1:A:358:MET:HE1	1:A:381:ALA:HB1	1.56	0.80
2:A:1479:HEM:HBC2	2:A:1479:HEM:CMC	2.11	0.80
1:A:332:TYR:CE1	1:A:336:MET:HG3	2.17	0.80
1:A:446:GLN:O	1:A:471:VAL:CG1	2.30	0.79
1:A:116:TYR:CD1	1:A:123:MET:HE3	2.18	0.78
1:A:358:MET:HB3	1:A:360:MET:CE	2.11	0.78
1:A:103:TYR:HB3	1:A:116:TYR:CD2	2.18	0.78
1:A:418:GLY:O	1:A:421:LYS:HG2	1.83	0.77
1:A:106:MET:CB	1:A:110:PHE:CE2	2.66	0.77
1:A:358:MET:CB	1:A:360:MET:HE3	2.12	0.77
1:A:293:GLN:O	1:A:297:THR:CG2	2.30	0.77
1:A:98:SER:OG	1:A:364:LYS:CE	2.33	0.77
1:A:360:MET:O	1:A:361:ARG:NH1	2.17	0.76
1:A:233:ARG:HH12	1:A:279:HIS:CD2	2.04	0.76
1:A:71:SER:O	1:A:72:ILE:HD13	1.87	0.75
1:A:205:GLU:O	1:A:208:LEU:HG	1.86	0.75
1:A:103:TYR:CB	1:A:116:TYR:CD2	2.69	0.75
1:A:358:MET:HE3	1:A:381:ALA:HB1	1.67	0.74
1:A:102:VAL:CG1	1:A:213:VAL:CG1	2.59	0.74
1:A:103:TYR:HB3	1:A:116:TYR:HD2	1.52	0.74
1:A:63:LEU:HD13	1:A:63:LEU:O	1.87	0.74
1:A:61:ARG:HG2	1:A:61:ARG:HH11	1.53	0.73
1:A:388:HIS:HE1	1:A:413:ILE:H	1.34	0.73
1:A:187:ASP:HA	1:A:190:LYS:HG3	1.70	0.73
1:A:165:ILE:HD13	1:A:165:ILE:H	1.52	0.72
1:A:98:SER:HB2	1:A:101:GLU:OE2	1.90	0.72
1:A:449:ARG:NH1	1:A:468:GLN:OE1	2.22	0.71
1:A:316:LEU:HD12	1:A:316:LEU:C	2.10	0.71
1:A:359:VAL:HG11	2:A:1479:HEM:O1A	1.89	0.71
1:A:294:HIS:O	1:A:298:ILE:HG13	1.91	0.70
2:A:1479:HEM:HBB2	2:A:1479:HEM:CMB	2.22	0.70

*Continued on next page...*

*Continued from previous page...*

Atom-1	Atom-2	Interatomic distance (Å)	Clash overlap (Å)
1:A:253:SER:O	1:A:254:LYS:HB2	1.90	0.70
1:A:102:VAL:C	1:A:213:VAL:HG13	2.12	0.69
1:A:101:GLU:HG3	1:A:362:MET:CB	2.22	0.69
1:A:116:TYR:HD1	1:A:123:MET:CE	2.05	0.69
1:A:180:CYS:O	1:A:184:PHE:HB2	1.93	0.68
1:A:107:THR:N	1:A:108:PRO:HD2	2.09	0.68
1:A:107:THR:O	1:A:111:GLY:N	2.24	0.67
1:A:233:ARG:HH12	1:A:279:HIS:HD2	1.38	0.67
1:A:97:LEU:CD2	1:A:380:ILE:HG21	2.25	0.67
1:A:101:GLU:HG3	1:A:362:MET:HB2	1.77	0.67
1:A:195:ARG:O	1:A:199:GLN:HG3	1.95	0.66
1:A:116:TYR:CD1	1:A:123:MET:CE	2.78	0.66
1:A:212:ALA:CB	1:A:219:LEU:CD2	2.43	0.66
1:A:223:LEU:N	1:A:223:LEU:HD12	2.10	0.66
1:A:89:PHE:CD2	1:A:382:CYS:HB2	2.30	0.66
1:A:228:ARG:O	1:A:232:ALA:N	2.25	0.65
1:A:358:MET:CB	1:A:360:MET:CE	2.73	0.65
1:A:104:THR:O	1:A:107:THR:CG2	2.33	0.65
1:A:150:VAL:O	1:A:154:MET:HG3	1.96	0.65
1:A:360:MET:C	1:A:361:ARG:HH11	2.00	0.65
1:A:357:LEU:O	1:A:384:PRO:HD2	1.97	0.65
1:A:96:ILE:HD12	1:A:96:ILE:N	2.11	0.64
1:A:446:GLN:C	1:A:471:VAL:HG13	2.17	0.64
1:A:133:GLU:OE2	1:A:264:GLY:HA3	1.98	0.64
1:A:250:GLU:HB3	1:A:255:ASP:OD1	1.96	0.64
1:A:208:LEU:N	1:A:208:LEU:HD23	2.12	0.63
1:A:399:LEU:HD12	1:A:400:TRP:N	2.13	0.63
1:A:447:LEU:HD13	1:A:449:ARG:N	2.13	0.63
1:A:358:MET:HE1	1:A:381:ALA:HB2	1.78	0.62
1:A:326:PHE:HB3	1:A:330:LEU:HD21	1.81	0.62
1:A:205:GLU:OE2	1:A:294:HIS:NE2	2.32	0.62
1:A:447:LEU:CD1	1:A:449:ARG:HB2	2.29	0.62
1:A:63:LEU:O	1:A:63:LEU:CD1	2.48	0.62
1:A:48:PHE:CE1	1:A:52:PRO:HB3	2.35	0.62
1:A:191:ARG:CZ	1:A:242:GLU:OE1	2.48	0.62
1:A:102:VAL:O	1:A:213:VAL:CG1	2.33	0.62
1:A:158:TRP:O	1:A:475:ARG:NH2	2.33	0.62
1:A:359:VAL:HG13	2:A:1479:HEM:CGA	2.29	0.62
1:A:478:LYS:HD3	1:A:478:LYS:C	2.20	0.62
1:A:88:ARG:O	1:A:92:PRO:CD	2.48	0.62
1:A:227:ALA:O	1:A:230:ARG:HB2	1.99	0.62

*Continued on next page...*

*Continued from previous page...*

Atom-1	Atom-2	Interatomic distance (Å)	Clash overlap (Å)
1:A:88:ARG:O	1:A:92:PRO:CG	2.48	0.61
1:A:44:HIS:CD2	1:A:71:SER:H	2.17	0.61
1:A:103:TYR:HD2	1:A:116:TYR:CZ	2.16	0.61
1:A:231:GLU:OE1	1:A:231:GLU:HA	2.01	0.61
1:A:359:VAL:CG1	2:A:1479:HEM:CGA	2.78	0.61
1:A:431:GLN:O	1:A:435:ILE:HG13	2.00	0.61
1:A:303:SER:O	1:A:307:LEU:HG	2.00	0.60
1:A:348:GLU:HB2	1:A:402:PRO:HA	1.82	0.60
1:A:358:MET:CE	1:A:381:ALA:CB	2.60	0.60
1:A:165:ILE:HD13	1:A:165:ILE:N	2.15	0.60
1:A:309:HIS:CD2	1:A:310:PRO:HD2	2.37	0.60
1:A:277:SER:O	1:A:281:VAL:HG23	2.02	0.60
1:A:341:PHE:O	1:A:344:ARG:HB2	2.01	0.60
1:A:432:VAL:O	1:A:436:LEU:HG	2.00	0.60
1:A:359:VAL:HG13	2:A:1479:HEM:O2A	2.02	0.60
1:A:72:ILE:O	1:A:75:GLN:HB3	2.02	0.59
1:A:207:SER:OG	1:A:208:LEU:HD23	2.02	0.59
1:A:106:MET:HG2	1:A:110:PHE:CE2	2.35	0.59
1:A:271:ARG:NH1	1:A:271:ARG:HG3	2.17	0.59
1:A:447:LEU:CD1	1:A:449:ARG:CB	2.81	0.59
1:A:444:ASP:OD2	1:A:476:LYS:HE3	2.03	0.59
1:A:217:TRP:CE3	1:A:218:LEU:N	2.71	0.58
1:A:106:MET:HG3	1:A:110:PHE:CZ	2.38	0.58
1:A:223:LEU:N	1:A:224:PRO:HD3	2.19	0.58
1:A:63:LEU:CD1	1:A:65:SER:HB3	2.34	0.58
1:A:125:GLU:OE1	1:A:271:ARG:HG2	2.03	0.58
1:A:291:ALA:HB1	3:A:1480:VT1:NAG	2.19	0.58
1:A:102:VAL:HG12	1:A:213:VAL:HG11	1.86	0.58
1:A:359:VAL:C	1:A:360:MET:HG3	2.24	0.57
1:A:348:GLU:HA	1:A:348:GLU:OE1	2.05	0.57
1:A:357:LEU:HD11	1:A:462:VAL:HG21	1.86	0.57
1:A:442:GLU:O	1:A:443:TYR:CD1	2.57	0.57
3:A:1480:VT1:HAC1	3:A:1480:VT1:NBK	2.18	0.57
1:A:63:LEU:CD1	1:A:63:LEU:C	2.72	0.57
1:A:75:GLN:HE21	1:A:76:ARG:H	1.52	0.57
1:A:146:ILE:O	1:A:150:VAL:HG23	2.05	0.56
1:A:328:ALA:HA	1:A:441:ARG:CZ	2.35	0.56
1:A:225:GLN:O	1:A:228:ARG:HB2	2.05	0.56
1:A:332:TYR:CE1	1:A:336:MET:CG	2.89	0.56
1:A:106:MET:HG3	1:A:110:PHE:CE2	2.41	0.56
1:A:147:GLN:NE2	1:A:328:ALA:O	2.38	0.56

*Continued on next page...*

*Continued from previous page...*

Atom-1	Atom-2	Interatomic distance (Å)	Clash overlap (Å)
1:A:218:LEU:HD22	1:A:219:LEU:CD2	2.30	0.56
1:A:385:LEU:O	1:A:389:HIS:CD2	2.52	0.56
1:A:362:MET:HE3	1:A:377:GLY:HA2	1.87	0.56
1:A:271:ARG:HG3	1:A:271:ARG:HH11	1.70	0.56
1:A:388:HIS:CE1	1:A:413:ILE:H	2.21	0.56
1:A:331:ASN:H	1:A:334:ASN:ND2	2.03	0.56
1:A:98:SER:OG	1:A:364:LYS:HE2	2.07	0.55
1:A:192:LEU:HD12	1:A:192:LEU:C	2.27	0.55
1:A:308:MET:SD	1:A:471:VAL:HG11	2.46	0.55
1:A:37:VAL:HG23	1:A:37:VAL:O	2.05	0.55
1:A:101:GLU:CG	1:A:362:MET:CB	2.85	0.55
1:A:44:HIS:H	1:A:72:ILE:HD13	1.71	0.55
3:A:1480:VT1:CAC	3:A:1480:VT1:FAP	2.45	0.55
1:A:33:PRO:HG3	1:A:63:LEU:CD2	2.24	0.55
1:A:101:GLU:HG3	1:A:362:MET:CG	2.36	0.55
1:A:101:GLU:HG3	1:A:362:MET:HG2	1.89	0.55
1:A:101:GLU:CG	1:A:362:MET:HB2	2.36	0.54
1:A:62:ASP:OD1	1:A:62:ASP:N	2.41	0.54
1:A:98:SER:OG	1:A:364:LYS:NZ	2.41	0.54
1:A:359:VAL:CG1	2:A:1479:HEM:O1A	2.56	0.54
1:A:447:LEU:HD11	1:A:449:ARG:HB2	1.88	0.54
1:A:63:LEU:HD12	1:A:65:SER:CB	2.38	0.54
1:A:218:LEU:CD2	1:A:219:LEU:HD21	2.31	0.54
1:A:37:VAL:O	1:A:37:VAL:CG2	2.55	0.54
1:A:104:THR:C	1:A:107:THR:HG23	2.21	0.54
3:A:1480:VT1:NBK	3:A:1480:VT1:CAC	2.71	0.54
1:A:58:ARG:HG3	1:A:62:ASP:OD1	2.08	0.53
1:A:43:GLY:HA3	1:A:71:SER:O	2.08	0.53
1:A:203:LYS:HG2	1:A:228:ARG:HB3	1.90	0.53
1:A:218:LEU:HD23	1:A:219:LEU:N	2.23	0.53
1:A:88:ARG:O	1:A:92:PRO:HD3	2.08	0.53
1:A:63:LEU:O	1:A:64:LYS:HB2	2.09	0.53
1:A:250:GLU:HB3	1:A:255:ASP:CG	2.28	0.53
1:A:143:VAL:HB	1:A:144:PRO:HD3	1.90	0.53
1:A:425:GLN:O	1:A:429:LEU:HG	2.09	0.53
1:A:476:LYS:O	1:A:477:LYS:HG3	2.08	0.53
1:A:61:ARG:HH11	1:A:61:ARG:CG	2.20	0.52
1:A:141:ASN:O	1:A:144:PRO:HD2	2.09	0.52
1:A:63:LEU:HD12	1:A:65:SER:HB3	1.90	0.52
1:A:75:GLN:NE2	1:A:76:ARG:N	2.47	0.52
1:A:59:CYS:O	1:A:63:LEU:HB3	2.10	0.52

*Continued on next page...*

*Continued from previous page...*

Atom-1	Atom-2	Interatomic distance (Å)	Clash overlap (Å)
1:A:93:ARG:HB3	1:A:95:GLU:OE1	2.09	0.52
1:A:223:LEU:N	1:A:223:LEU:CD1	2.73	0.52
1:A:393:ALA:HA	1:A:407:LYS:HB2	1.92	0.52
3:A:1480:VT1:FAP	3:A:1480:VT1:HAC2	1.99	0.52
1:A:51:ASN:C	1:A:51:ASN:HD22	2.11	0.52
1:A:63:LEU:HD12	1:A:65:SER:N	2.24	0.52
1:A:75:GLN:HE21	1:A:75:GLN:C	2.11	0.52
1:A:91:SER:N	1:A:92:PRO:CD	2.72	0.52
1:A:359:VAL:HG12	1:A:361:ARG:HH12	1.75	0.52
1:A:102:VAL:CA	1:A:213:VAL:HG13	2.41	0.51
1:A:89:PHE:CE1	1:A:361:ARG:CZ	2.82	0.51
1:A:348:GLU:HG3	1:A:400:TRP:CD1	2.45	0.51
1:A:429:LEU:O	1:A:433:LYS:HG3	2.11	0.51
1:A:255:ASP:OD1	1:A:256:ASN:ND2	2.43	0.51
1:A:192:LEU:HD11	1:A:197:PHE:HB2	1.93	0.51
1:A:35:TYR:CG	1:A:36:PRO:HD2	2.46	0.51
1:A:97:LEU:HD22	1:A:380:ILE:HG21	1.91	0.51
1:A:219:LEU:CD2	1:A:219:LEU:N	2.73	0.51
1:A:93:ARG:HB2	1:A:96:ILE:HD13	1.93	0.51
1:A:447:LEU:HD11	1:A:449:ARG:CB	2.39	0.51
1:A:227:ALA:O	1:A:230:ARG:CB	2.58	0.50
1:A:96:ILE:N	1:A:96:ILE:CD1	2.74	0.50
1:A:300:THR:O	1:A:304:MET:HG3	2.10	0.50
1:A:205:GLU:O	1:A:207:SER:N	2.45	0.50
1:A:233:ARG:NH1	1:A:279:HIS:CD2	2.76	0.50
1:A:362:MET:CE	1:A:377:GLY:HA2	2.41	0.50
1:A:98:SER:CB	1:A:364:LYS:HE2	2.42	0.50
1:A:447:LEU:HD13	1:A:449:ARG:HB2	1.92	0.50
1:A:103:TYR:HB2	1:A:116:TYR:CD2	2.44	0.50
1:A:160:GLU:OE1	1:A:160:GLU:N	2.45	0.50
1:A:89:PHE:O	1:A:92:PRO:HD2	2.11	0.50
1:A:98:SER:HB3	1:A:120:TYR:HH	1.77	0.50
1:A:212:ALA:CB	1:A:218:LEU:HD22	2.42	0.50
1:A:219:LEU:HD22	1:A:219:LEU:N	2.26	0.50
1:A:92:PRO:HB2	1:A:97:LEU:HD12	1.92	0.50
1:A:316:LEU:C	1:A:316:LEU:CD1	2.79	0.50
1:A:44:HIS:CD2	1:A:70:ILE:HB	2.47	0.49
1:A:389:HIS:HE1	1:A:398:ARG:HH11	1.60	0.49
1:A:35:TYR:CD1	1:A:36:PRO:HD2	2.46	0.49
1:A:151:ARG:HA	1:A:154:MET:HE2	1.95	0.49
1:A:203:LYS:HD3	1:A:228:ARG:HB3	1.94	0.49

*Continued on next page...*

*Continued from previous page...*

Atom-1	Atom-2	Interatomic distance (Å)	Clash overlap (Å)
1:A:247:ARG:NH2	1:A:258:THR:HG21	2.27	0.49
1:A:291:ALA:HB2	3:A:1480:VT1:HAN	1.94	0.49
1:A:237:GLN:HG2	1:A:278:LEU:HD13	1.94	0.49
1:A:212:ALA:HB2	1:A:218:LEU:HD22	1.94	0.49
1:A:106:MET:HG2	1:A:110:PHE:HE2	1.78	0.49
1:A:165:ILE:N	1:A:165:ILE:CD1	2.76	0.49
1:A:471:VAL:HG12	1:A:472:LYS:N	2.27	0.49
1:A:373:VAL:CG1	1:A:374:VAL:N	2.76	0.48
1:A:94:ASN:ND2	1:A:94:ASN:H	2.10	0.48
1:A:176:ILE:HB	1:A:293:GLN:HE22	1.78	0.48
1:A:334:ASN:O	1:A:338:GLU:HB2	2.13	0.48
1:A:351:ARG:HA	1:A:388:HIS:CD2	2.49	0.48
1:A:106:MET:CG	1:A:110:PHE:CZ	2.95	0.48
1:A:227:ALA:HA	1:A:230:ARG:HB2	1.95	0.48
1:A:332:TYR:CD1	1:A:332:TYR:C	2.87	0.48
1:A:30:LYS:HD2	1:A:31:THR:H	1.78	0.48
1:A:42:LEU:HD23	1:A:42:LEU:N	2.27	0.48
1:A:205:GLU:C	1:A:207:SER:N	2.66	0.48
1:A:211:ALA:HB1	1:A:215:MET:CE	2.44	0.48
1:A:302:TRP:CH2	1:A:464:PRO:HB3	2.49	0.47
1:A:94:ASN:ND2	1:A:94:ASN:N	2.61	0.47
1:A:250:GLU:CG	1:A:255:ASP:OD2	2.59	0.47
1:A:61:ARG:CG	1:A:61:ARG:NH1	2.78	0.47
1:A:107:THR:N	1:A:108:PRO:CD	2.76	0.47
1:A:44:HIS:CD2	1:A:71:SER:N	2.82	0.47
1:A:120:TYR:N	1:A:121:PRO:CD	2.77	0.47
1:A:205:GLU:C	1:A:207:SER:H	2.18	0.47
1:A:224:PRO:CD	1:A:225:GLN:H	2.28	0.47
1:A:255:ASP:OD1	1:A:256:ASN:N	2.48	0.47
1:A:352:ARG:CZ	1:A:398:ARG:NH2	2.77	0.47
1:A:331:ASN:OD1	1:A:334:ASN:OD1	2.33	0.47
1:A:61:ARG:HG2	1:A:61:ARG:NH1	2.27	0.47
1:A:182:CYS:C	1:A:183:LEU:HD23	2.36	0.47
1:A:301:SER:O	1:A:305:LEU:HG	2.14	0.47
1:A:444:ASP:OD2	1:A:476:LYS:CE	2.63	0.47
1:A:102:VAL:HG11	1:A:360:MET:HB2	1.97	0.46
1:A:103:TYR:CD2	1:A:116:TYR:HE2	2.22	0.46
1:A:143:VAL:N	1:A:144:PRO:CD	2.78	0.46
1:A:116:TYR:CE1	1:A:123:MET:HE1	2.50	0.46
1:A:224:PRO:HD2	1:A:225:GLN:H	1.80	0.46
1:A:220:ARG:NH1	1:A:220:ARG:HG3	2.30	0.46

*Continued on next page...*

*Continued from previous page...*

Atom-1	Atom-2	Interatomic distance (Å)	Clash overlap (Å)
1:A:69:THR:HA	1:A:78:THR:HA	1.97	0.46
1:A:98:SER:O	1:A:362:MET:N	2.47	0.46
1:A:291:ALA:HB2	3:A:1480:VT1:CAN	2.46	0.46
1:A:357:LEU:HD22	1:A:385:LEU:HD22	1.97	0.46
1:A:308:MET:SD	1:A:445:PHE:CB	2.97	0.46
1:A:70:ILE:HG13	1:A:77:VAL:HB	1.97	0.46
1:A:200:LEU:CD2	1:A:232:ALA:HA	2.46	0.46
1:A:322:GLU:OE2	1:A:339:MET:HA	2.15	0.46
1:A:358:MET:HE2	1:A:360:MET:CE	2.46	0.46
1:A:231:GLU:OE1	1:A:231:GLU:CA	2.64	0.46
1:A:341:PHE:O	1:A:344:ARG:N	2.49	0.46
1:A:389:HIS:CE1	1:A:398:ARG:HH11	2.34	0.45
1:A:59:CYS:O	1:A:63:LEU:CB	2.65	0.45
1:A:106:MET:CG	1:A:110:PHE:HE2	2.26	0.45
1:A:271:ARG:HH11	1:A:271:ARG:CG	2.30	0.45
1:A:359:VAL:CG1	2:A:1479:HEM:O2A	2.65	0.45
1:A:204:MET:SD	1:A:233:ARG:HG3	2.57	0.45
1:A:214:PHE:CD1	1:A:214:PHE:N	2.77	0.45
1:A:246:ALA:O	1:A:250:GLU:OE1	2.35	0.45
1:A:175:ILE:HG22	1:A:176:ILE:N	2.31	0.45
1:A:97:LEU:HD21	1:A:380:ILE:HG21	1.95	0.45
1:A:330:LEU:HA	1:A:334:ASN:ND2	2.32	0.45
1:A:50:LYS:HA	1:A:50:LYS:HD3	1.66	0.44
1:A:88:ARG:O	1:A:92:PRO:HG2	2.17	0.44
1:A:218:LEU:HD23	1:A:218:LEU:C	2.36	0.44
1:A:330:LEU:CD2	1:A:334:ASN:HD22	2.30	0.44
1:A:361:ARG:HH11	1:A:361:ARG:HG2	1.81	0.44
1:A:308:MET:HG3	1:A:445:PHE:HB2	1.98	0.44
1:A:429:LEU:O	1:A:433:LYS:CG	2.65	0.44
1:A:29:LYS:HB2	1:A:29:LYS:HE3	1.72	0.44
1:A:220:ARG:HH11	1:A:220:ARG:CG	2.30	0.44
1:A:91:SER:N	1:A:92:PRO:HD3	2.32	0.44
1:A:98:SER:HB2	1:A:364:LYS:HE2	1.99	0.44
1:A:345:CYS:HA	1:A:402:PRO:HB3	1.99	0.44
1:A:320:HIS:C	1:A:322:GLU:N	2.71	0.44
1:A:97:LEU:HD22	1:A:361:ARG:HB2	1.99	0.44
1:A:447:LEU:HD13	1:A:449:ARG:CB	2.47	0.44
1:A:241:GLY:O	1:A:245:VAL:HG23	2.18	0.43
1:A:352:ARG:NH1	1:A:353:ASP:OD2	2.51	0.43
2:A:1479:HEM:HMC2	2:A:1479:HEM:CBC	2.37	0.43
1:A:61:ARG:O	1:A:64:LYS:HG2	2.18	0.43

*Continued on next page...*



*Continued from previous page...*

Atom-1	Atom-2	Interatomic distance (Å)	Clash overlap (Å)
1:A:60:LYS:O	1:A:64:LYS:N	2.50	0.43
1:A:211:ALA:O	1:A:214:PHE:HD1	2.00	0.43
1:A:359:VAL:O	1:A:360:MET:HG3	2.19	0.43
1:A:442:GLU:C	1:A:443:TYR:CD1	2.91	0.43
1:A:358:MET:HB2	1:A:360:MET:CE	2.47	0.43
1:A:291:ALA:HB2	3:A:1480:VT1:FAP	2.09	0.43
1:A:380:ILE:HG23	1:A:380:ILE:O	2.19	0.43
1:A:475:ARG:HD2	1:A:477:LYS:HE3	2.00	0.43
1:A:34:VAL:CG2	1:A:76:ARG:HH12	2.32	0.43
1:A:220:ARG:HG3	1:A:220:ARG:HH11	1.84	0.43
1:A:223:LEU:N	1:A:224:PRO:CD	2.82	0.43
1:A:465:THR:HB	1:A:468:GLN:HG3	2.01	0.43
1:A:103:TYR:CD2	1:A:116:TYR:CZ	2.98	0.42
1:A:331:ASN:OD1	1:A:334:ASN:CG	2.57	0.42
1:A:282:CYS:O	1:A:286:VAL:HG23	2.19	0.42
1:A:300:THR:O	1:A:303:SER:OG	2.27	0.42
1:A:189:ARG:HA	1:A:192:LEU:O	2.20	0.42
1:A:203:LYS:CD	1:A:228:ARG:HB3	2.49	0.42
1:A:94:ASN:HD22	1:A:95:GLU:H	1.68	0.42
1:A:332:TYR:O	1:A:336:MET:HG2	2.19	0.42
1:A:444:ASP:CG	1:A:476:LYS:HE3	2.39	0.42
3:A:1480:VT1:HAV	3:A:1480:VT1:HBI	1.78	0.42
1:A:212:ALA:HB2	1:A:218:LEU:CD2	2.49	0.42
1:A:320:HIS:O	1:A:322:GLU:N	2.53	0.42
1:A:361:ARG:NH1	1:A:361:ARG:HG2	2.35	0.42
1:A:98:SER:CB	1:A:120:TYR:OH	2.59	0.41
1:A:330:LEU:HA	1:A:334:ASN:HD22	1.85	0.41
1:A:343:GLU:HB2	1:A:433:LYS:HE3	2.01	0.41
1:A:424:GLY:HA3	2:A:1479:HEM:C3C	2.55	0.41
1:A:455:PRO:HG2	1:A:457:TYR:CE2	2.55	0.41
1:A:44:HIS:CD2	1:A:71:SER:O	2.73	0.41
1:A:204:MET:HA	1:A:229:CYS:HA	2.02	0.41
1:A:105:ILE:HG13	1:A:106:MET:SD	2.61	0.41
1:A:174:MET:O	1:A:178:THR:HG23	2.20	0.41
1:A:352:ARG:NH2	1:A:398:ARG:HH21	2.19	0.41
1:A:399:LEU:HD12	1:A:399:LEU:C	2.41	0.41
1:A:166:ASN:HD21	1:A:466:LEU:HD12	1.85	0.41
1:A:106:MET:C	1:A:108:PRO:HD2	2.40	0.41
1:A:305:LEU:HD13	1:A:453:PRO:HD2	2.02	0.41
1:A:351:ARG:O	1:A:388:HIS:HB3	2.21	0.41
1:A:76:ARG:NE	1:A:378:ASP:OD1	2.53	0.41

*Continued on next page...*

Continued from previous page...

Atom-1	Atom-2	Interatomic distance (Å)	Clash overlap (Å)
1:A:146:ILE:HD11	1:A:182:CYS:SG	2.62	0.40
1:A:200:LEU:HD22	1:A:232:ALA:O	2.21	0.40
1:A:269:VAL:HG12	1:A:270:TYR:O	2.21	0.40
1:A:212:ALA:O	1:A:215:MET:C	2.60	0.40
1:A:105:ILE:O	1:A:108:PRO:HD2	2.21	0.40
1:A:352:ARG:CZ	1:A:398:ARG:HH21	2.35	0.40
1:A:424:GLY:HA3	2:A:1479:HEM:C2C	2.57	0.40

There are no symmetry-related clashes.

## 5.3 Torsion angles [i](#)

### 5.3.1 Protein backbone [i](#)

In the following table, the Percentiles column shows the percent Ramachandran outliers of the chain as a percentile score with respect to all X-ray entries followed by that with respect to entries of similar resolution.

The Analysed column shows the number of residues for which the backbone conformation was analysed, and the total number of residues.

Mol	Chain	Analysed	Favoured	Allowed	Outliers	Percentiles
1	A	445/460 (97%)	422 (95%)	22 (5%)	1 (0%)	47 69

All (1) Ramachandran outliers are listed below:

Mol	Chain	Res	Type
1	A	224	PRO

### 5.3.2 Protein sidechains [i](#)

In the following table, the Percentiles column shows the percent sidechain outliers of the chain as a percentile score with respect to all X-ray entries followed by that with respect to entries of similar resolution.

The Analysed column shows the number of residues for which the sidechain conformation was analysed, and the total number of residues.

Mol	Chain	Analysed	Rotameric	Outliers	Percentiles
1	A	392/402 (98%)	358 (91%)	34 (9%)	10 18

All (34) residues with a non-rotameric sidechain are listed below:

Mol	Chain	Res	Type
1	A	41	PHE
1	A	51	ASN
1	A	61	ARG
1	A	62	ASP
1	A	63	LEU
1	A	94	ASN
1	A	101	GLU
1	A	106	MET
1	A	165	ILE
1	A	192	LEU
1	A	208	LEU
1	A	209	ILE
1	A	214	PHE
1	A	218	LEU
1	A	220	ARG
1	A	233	ARG
1	A	248	GLU
1	A	251	GLU
1	A	256	ASN
1	A	257	ASN
1	A	271	ARG
1	A	278	LEU
1	A	297	THR
1	A	300	THR
1	A	316	LEU
1	A	332	TYR
1	A	333	ASP
1	A	336	MET
1	A	378	ASP
1	A	391	GLU
1	A	396	ASN
1	A	404	ARG
1	A	419	VAL
1	A	421	LYS

Sometimes sidechains can be flipped to improve hydrogen bonding and reduce clashes. All (15) such sidechains are listed below:

Mol	Chain	Res	Type
1	A	51	ASN
1	A	75	GLN
1	A	94	ASN

*Continued on next page...*

Continued from previous page...

Mol	Chain	Res	Type
1	A	225	GLN
1	A	256	ASN
1	A	257	ASN
1	A	279	HIS
1	A	293	GLN
1	A	309	HIS
1	A	334	ASN
1	A	388	HIS
1	A	389	HIS
1	A	396	ASN
1	A	431	GLN
1	A	446	GLN

### 5.3.3 RNA [i](#)

There are no RNA molecules in this entry.

## 5.4 Non-standard residues in protein, DNA, RNA chains [i](#)

There are no non-standard protein/DNA/RNA residues in this entry.

## 5.5 Carbohydrates [i](#)

There are no monosaccharides in this entry.

## 5.6 Ligand geometry [i](#)

2 ligands are modelled in this entry.

In the following table, the Counts columns list the number of bonds (or angles) for which Mogul statistics could be retrieved, the number of bonds (or angles) that are observed in the model and the number of bonds (or angles) that are defined in the Chemical Component Dictionary. The Link column lists molecule types, if any, to which the group is linked. The Z score for a bond length (or angle) is the number of standard deviations the observed value is removed from the expected value. A bond length (or angle) with  $|Z| > 2$  is considered an outlier worth inspection. RMSZ is the root-mean-square of all Z scores of the bond lengths (or angles).

Mol	Type	Chain	Res	Link	Bond lengths			Bond angles		
					Counts	RMSZ	$\# Z  > 2$	Counts	RMSZ	$\# Z  > 2$
3	VT1	A	1480	2	36,40,40	3.21	6 (16%)	46,60,60	1.44	8 (17%)
2	HEM	A	1479	3,1	41,50,50	1.44	6 (14%)	45,82,82	2.57	13 (28%)

In the following table, the Chirals column lists the number of chiral outliers, the number of chiral centers analysed, the number of these observed in the model and the number defined in the Chemical Component Dictionary. Similar counts are reported in the Torsion and Rings columns. '-' means no outliers of that kind were identified.

Mol	Type	Chain	Res	Link	Chirals	Torsions	Rings
3	VT1	A	1480	2	-	11/33/36/36	0/4/4/4
2	HEM	A	1479	3,1	-	0/12/54/54	-

All (12) bond length outliers are listed below:

Mol	Chain	Res	Type	Atoms	Z	Observed(Å)	Ideal(Å)
3	A	1480	VT1	CAB-CAI	-13.23	1.40	1.52
3	A	1480	VT1	NAH-NAD	-10.07	1.14	1.34
3	A	1480	VT1	NAF-NAG	-5.71	1.15	1.33
3	A	1480	VT1	NAH-NAG	-5.47	1.18	1.30
2	A	1479	HEM	C1B-NB	-4.07	1.33	1.40
3	A	1480	VT1	CAW-CAX	-3.93	1.39	1.49
2	A	1479	HEM	C4D-ND	-3.77	1.33	1.40
3	A	1480	VT1	CBJ-NBK	2.84	1.40	1.34
2	A	1479	HEM	C4B-NB	-2.65	1.33	1.38
2	A	1479	HEM	C1D-ND	-2.54	1.33	1.38
2	A	1479	HEM	FE-NB	2.41	2.08	1.96
2	A	1479	HEM	FE-ND	-2.41	1.85	1.96

All (21) bond angle outliers are listed below:

Mol	Chain	Res	Type	Atoms	Z	Observed(°)	Ideal(°)
2	A	1479	HEM	CHC-C4B-NB	8.10	133.23	124.43
2	A	1479	HEM	CHD-C1D-ND	6.78	131.80	124.43
2	A	1479	HEM	C1B-NB-C4B	5.21	110.45	105.07
2	A	1479	HEM	CHD-C1D-C2D	-4.87	117.36	124.98
2	A	1479	HEM	CHA-C4D-ND	4.45	129.88	124.38
3	A	1480	VT1	CAN-CAO-CAI	-3.47	120.23	124.00
2	A	1479	HEM	CAD-CBD-CGD	-3.41	106.26	113.60
3	A	1480	VT1	CAO-CAN-CAL	3.33	120.11	116.62
2	A	1479	HEM	CHC-C4B-C3B	-3.29	119.53	124.57
2	A	1479	HEM	CHB-C1B-NB	3.27	128.43	124.38
2	A	1479	HEM	CBA-CAA-C2A	-2.97	107.56	112.62
3	A	1480	VT1	CAW-CBJ-NBK	-2.90	119.54	124.32
2	A	1479	HEM	CHA-C4D-C3D	-2.72	120.23	125.33
3	A	1480	VT1	CAK-CAL-CAN	-2.51	120.03	123.29
3	A	1480	VT1	CAJ-CAI-CAB	-2.48	117.35	120.82
2	A	1479	HEM	C4C-CHD-C1D	-2.46	119.31	122.56

*Continued on next page...*

*Continued from previous page...*

Mol	Chain	Res	Type	Atoms	Z	Observed(°)	Ideal(°)
3	A	1480	VT1	CAJ-CAI-CAO	2.45	119.15	116.10
3	A	1480	VT1	NAF-NAG-NAH	2.42	112.80	110.09
2	A	1479	HEM	C4D-ND-C1D	2.18	107.33	105.07
3	A	1480	VT1	CAE-NAD-NAH	-2.18	106.01	108.17
2	A	1479	HEM	C4B-CHC-C1C	-2.11	119.77	122.56

There are no chirality outliers.

All (11) torsion outliers are listed below:

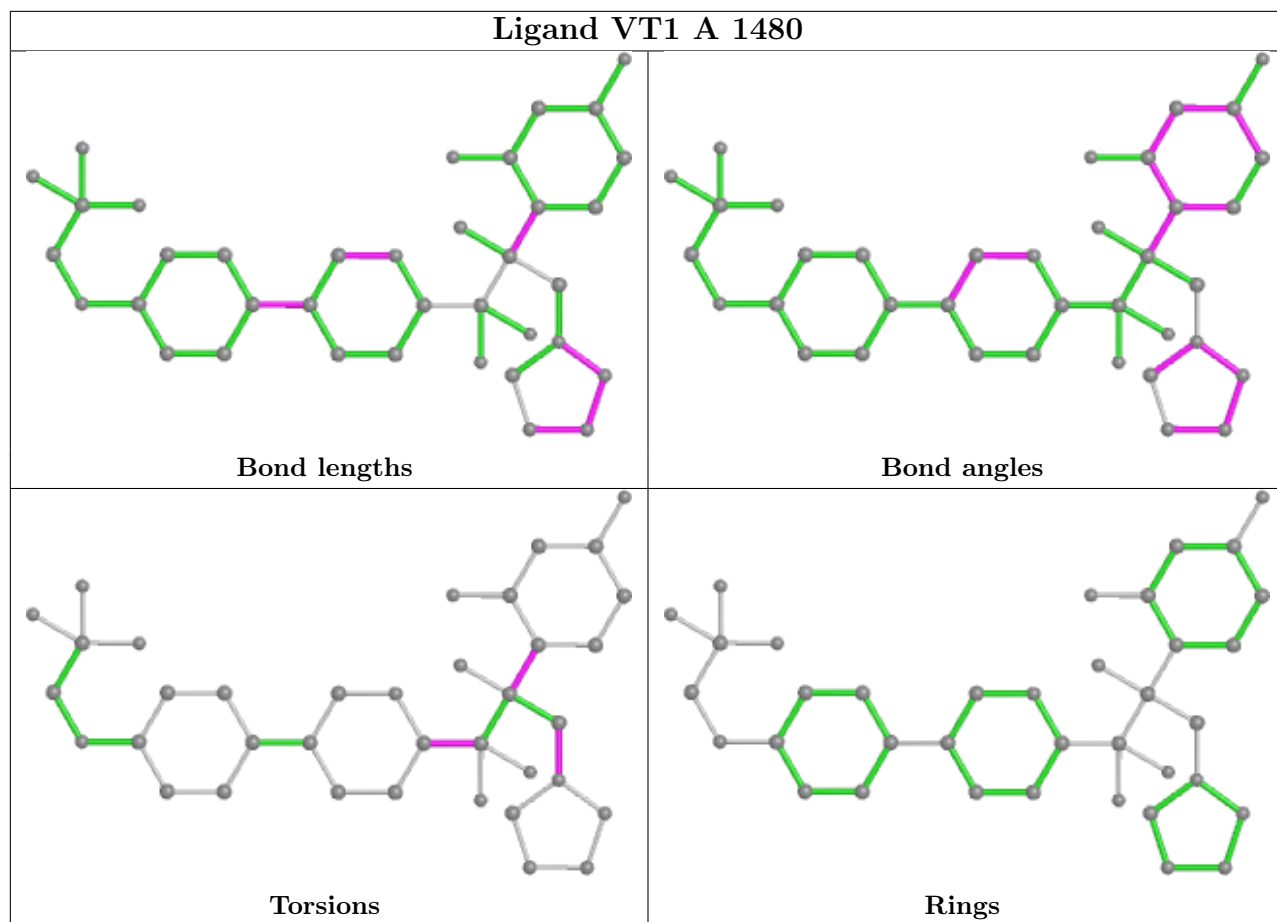
Mol	Chain	Res	Type	Atoms
3	A	1480	VT1	CAB-CAQ-CAT-NBK
3	A	1480	VT1	CAC-CAB-CAI-CAO
3	A	1480	VT1	CAC-CAB-CAI-CAJ
3	A	1480	VT1	OAA-CAB-CAI-CAO
3	A	1480	VT1	OAA-CAB-CAI-CAJ
3	A	1480	VT1	CAB-CAC-NAD-CAE
3	A	1480	VT1	FAR-CAQ-CAT-CAU
3	A	1480	VT1	FAS-CAQ-CAT-CAU
3	A	1480	VT1	FAR-CAQ-CAT-NBK
3	A	1480	VT1	FAS-CAQ-CAT-NBK
3	A	1480	VT1	CAB-CAC-NAD-NAH

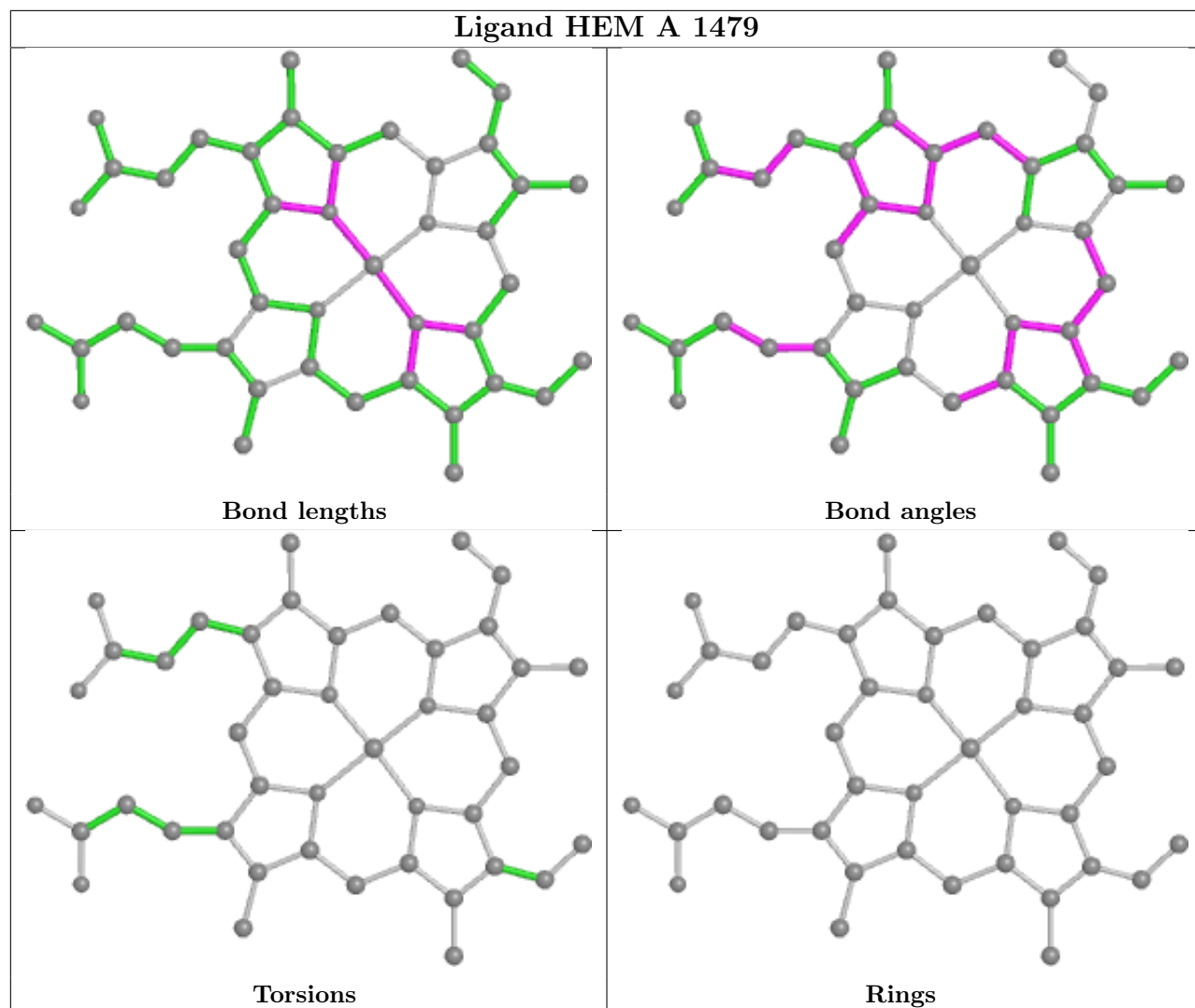
There are no ring outliers.

2 monomers are involved in 22 short contacts:

Mol	Chain	Res	Type	Clashes	Symm-Clashes
3	A	1480	VT1	9	0
2	A	1479	HEM	13	0

The following is a two-dimensional graphical depiction of Mogul quality analysis of bond lengths, bond angles, torsion angles, and ring geometry for all instances of the Ligand of Interest. In addition, ligands with molecular weight > 250 and outliers as shown on the validation Tables will also be included. For torsion angles, if less than 5% of the Mogul distribution of torsion angles is within 10 degrees of the torsion angle in question, then that torsion angle is considered an outlier. Any bond that is central to one or more torsion angles identified as an outlier by Mogul will be highlighted in the graph. For rings, the root-mean-square deviation (RMSD) between the ring in question and similar rings identified by Mogul is calculated over all ring torsion angles. If the average RMSD is greater than 60 degrees and the minimal RMSD between the ring in question and any Mogul-identified rings is also greater than 60 degrees, then that ring is considered an outlier. The outliers are highlighted in purple. The color gray indicates Mogul did not find sufficient equivalents in the CSD to analyse the geometry.





## 5.7 Other polymers [i](#)

There are no such residues in this entry.

## 5.8 Polymer linkage issues [i](#)

There are no chain breaks in this entry.



## 6 Fit of model and data

### 6.1 Protein, DNA and RNA chains

In the following table, the column labelled ‘#RSRZ> 2’ contains the number (and percentage) of RSRZ outliers, followed by percent RSRZ outliers for the chain as percentile scores relative to all X-ray entries and entries of similar resolution. The OWAB column contains the minimum, median, 95<sup>th</sup> percentile and maximum values of the occupancy-weighted average B-factor per residue. The column labelled ‘Q< 0.9’ lists the number of (and percentage) of residues with an average occupancy less than 0.9.

Mol	Chain	Analysed	<RSRZ>	#RSRZ>2	OWAB(Å <sup>2</sup> )	Q<0.9
1	A	449/460 (97%)	0.49	54 (12%) <b>4</b> <b>4</b>	66, 114, 173, 270	0

All (54) RSRZ outliers are listed below:

Mol	Chain	Res	Type	RSRZ
1	A	223	LEU	17.1
1	A	219	LEU	9.3
1	A	262	LEU	7.7
1	A	221	LEU	6.7
1	A	220	ARG	5.8
1	A	369	VAL	5.4
1	A	210	PRO	5.4
1	A	214	PHE	5.2
1	A	184	PHE	5.1
1	A	253	SER	5.0
1	A	284	MET	4.9
1	A	241	GLY	4.9
1	A	367	VAL	4.8
1	A	374	VAL	4.5
1	A	188	LEU	4.5
1	A	77	VAL	4.0
1	A	106	MET	3.9
1	A	78	THR	3.8
1	A	372	TYR	3.8
1	A	261	LEU	3.8
1	A	44	HIS	3.4
1	A	224	PRO	3.4
1	A	46	VAL	3.4
1	A	240	LEU	3.3
1	A	79	ILE	3.3
1	A	209	ILE	3.3
1	A	30	LYS	3.2

*Continued on next page...*

*Continued from previous page...*

Mol	Chain	Res	Type	RSRZ
1	A	213	VAL	3.0
1	A	130	LEU	2.7
1	A	346	VAL	2.7
1	A	286	VAL	2.7
1	A	167	LEU	2.6
1	A	347	ARG	2.6
1	A	379	ILE	2.5
1	A	237	GLN	2.5
1	A	415	PHE	2.5
1	A	183	LEU	2.4
1	A	330	LEU	2.4
1	A	215	MET	2.2
1	A	256	ASN	2.2
1	A	453	PRO	2.2
1	A	350	ILE	2.2
1	A	358	MET	2.2
1	A	247	ARG	2.2
1	A	56	MET	2.1
1	A	435	ILE	2.1
1	A	432	VAL	2.1
1	A	197	PHE	2.1
1	A	191	ARG	2.1
1	A	255	ASP	2.1
1	A	105	ILE	2.0
1	A	80	VAL	2.0
1	A	249	LYS	2.0
1	A	89	PHE	2.0

## 6.2 Non-standard residues in protein, DNA, RNA chains [i](#)

There are no non-standard protein/DNA/RNA residues in this entry.

## 6.3 Carbohydrates [i](#)

There are no monosaccharides in this entry.

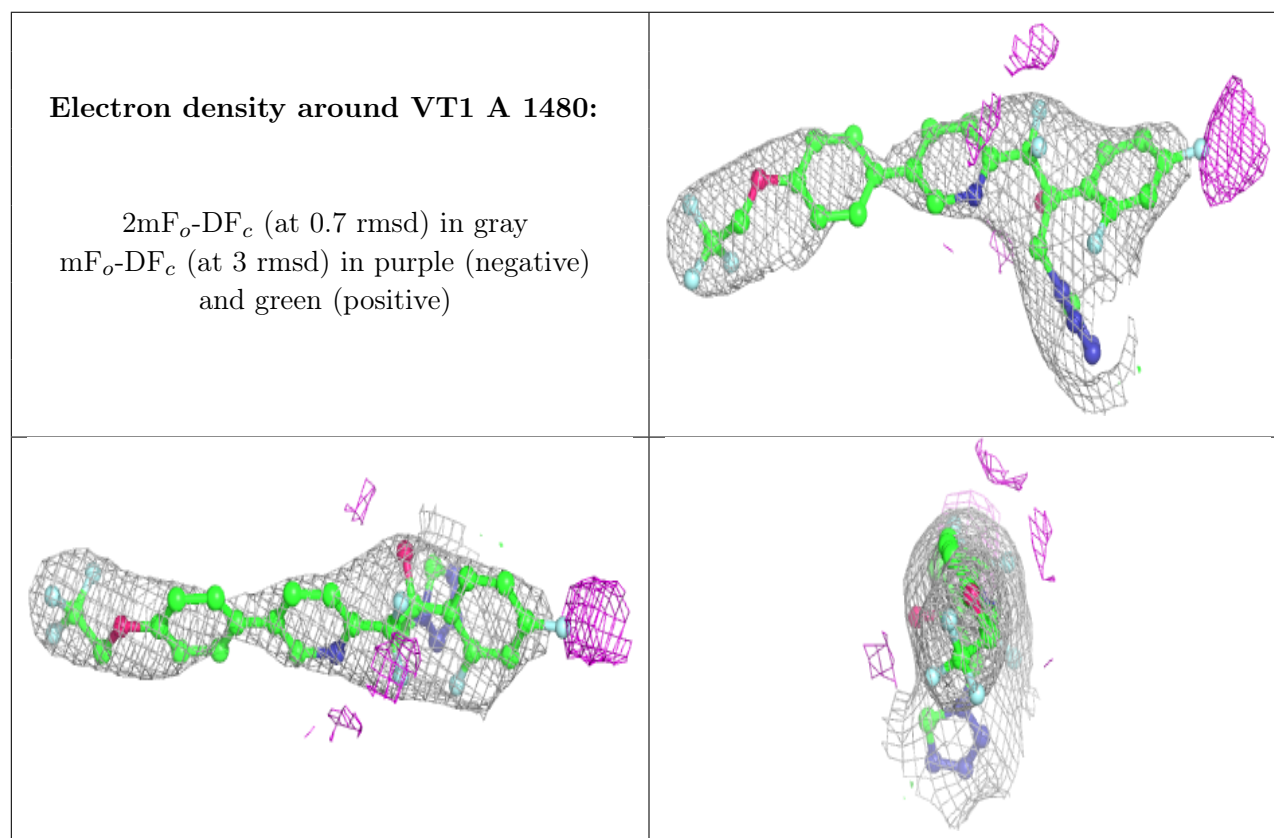
## 6.4 Ligands [i](#)

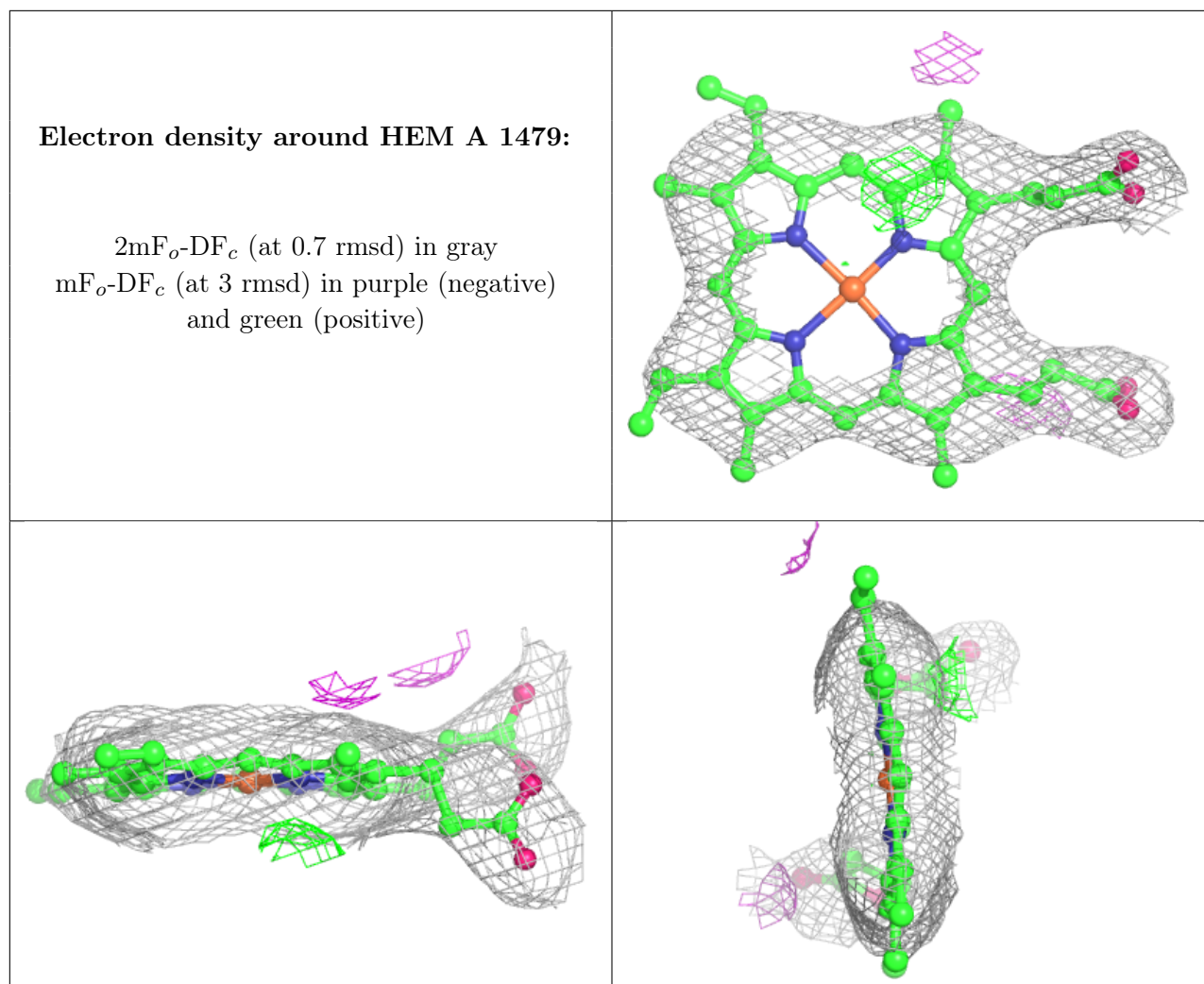
In the following table, the Atoms column lists the number of modelled atoms in the group and the number defined in the chemical component dictionary. The B-factors column lists the minimum,

median, 95<sup>th</sup> percentile and maximum values of B factors of atoms in the group. The column labelled 'Q< 0.9' lists the number of atoms with occupancy less than 0.9.

Mol	Type	Chain	Res	Atoms	RSCC	RSR	B-factors(Å <sup>2</sup> )	Q<0.9
3	VT1	A	1480	37/37	0.94	0.34	70,92,129,138	0
2	HEM	A	1479	43/43	0.98	0.23	59,73,95,102	0

The following is a graphical depiction of the model fit to experimental electron density of all instances of the Ligand of Interest. In addition, ligands with molecular weight > 250 and outliers as shown on the geometry validation Tables will also be included. Each fit is shown from different orientation to approximate a three-dimensional view.





## 6.5 Other polymers [i](#)

There are no such residues in this entry.