



Full wwPDB X-ray Structure Validation Report ⓘ

Aug 16, 2022 – 10:10 am BST

PDB ID : 8ABX
Title : Crystal structure of IDO1 in complex with Apoxidole-1
Authors : Dotsch, L.; Ziegler, S.; Waldmann, H.; Gasper, R.
Deposited on : 2022-07-05
Resolution : 1.65 Å(reported)

This is a Full wwPDB X-ray Structure Validation Report for a publicly released PDB entry.

We welcome your comments at validation@mail.wwpdb.org

A user guide is available at

<https://www.wwpdb.org/validation/2017/XrayValidationReportHelp>

with specific help available everywhere you see the ⓘ symbol.

The types of validation reports are described at <http://www.wwpdb.org/validation/2017/FAQs#types>.

The following versions of software and data (see [references ⓘ](#)) were used in the production of this report:

MolProbity : 4.02b-467
Mogul : 1.8.4, CSD as541be (2020)
Xtriage (Phenix) : 1.13
EDS : 2.29
buster-report : 1.1.7 (2018)
Percentile statistics : 20191225.v01 (using entries in the PDB archive December 25th 2019)
Refmac : 5.8.0267
CCP4 : 7.1.010 (Gargrove)
Ideal geometry (proteins) : Engh & Huber (2001)
Ideal geometry (DNA, RNA) : Parkinson et al. (1996)
Validation Pipeline (wwPDB-VP) : 2.29

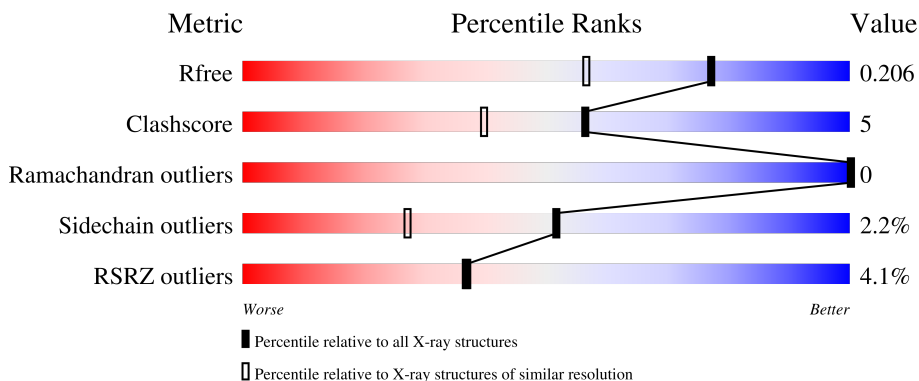
1 Overall quality at a glance

The following experimental techniques were used to determine the structure:

X-RAY DIFFRACTION

The reported resolution of this entry is 1.65 Å.

Percentile scores (ranging between 0-100) for global validation metrics of the entry are shown in the following graphic. The table shows the number of entries on which the scores are based.



Metric	Whole archive (#Entries)	Similar resolution (#Entries, resolution range(Å))
R_{free}	130704	1827 (1.66-1.66)
Clashscore	141614	1931 (1.66-1.66)
Ramachandran outliers	138981	1891 (1.66-1.66)
Sidechain outliers	138945	1891 (1.66-1.66)
RSRZ outliers	127900	1791 (1.66-1.66)

The table below summarises the geometric issues observed across the polymeric chains and their fit to the electron density. The red, orange, yellow and green segments of the lower bar indicate the fraction of residues that contain outliers for ≥ 3 , 2, 1 and 0 types of geometric quality criteria respectively. A grey segment represents the fraction of residues that are not modelled. The numeric value for each fraction is indicated below the corresponding segment, with a dot representing fractions $\leq 5\%$. The upper red bar (where present) indicates the fraction of residues that have poor fit to the electron density. The numeric value is given above the bar.

Mol	Chain	Length	Quality of chain
1	A	404	

2 Entry composition [i](#)

There are 6 unique types of molecules in this entry. The entry contains 6615 atoms, of which 3258 are hydrogens and 0 are deuteriums.

In the tables below, the ZeroOcc column contains the number of atoms modelled with zero occupancy, the AltConf column contains the number of residues with at least one atom in alternate conformation and the Trace column contains the number of residues modelled with at most 2 atoms.

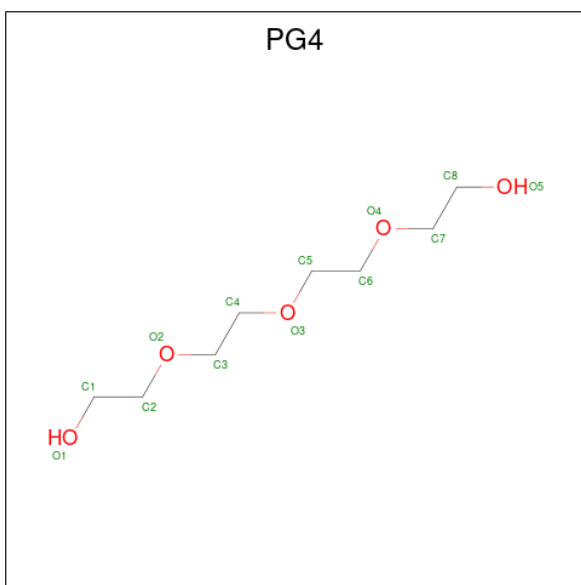
- Molecule 1 is a protein called Indoleamine 2,3-dioxygenase 1.

Mol	Chain	Residues	Atoms					ZeroOcc	AltConf	Trace	
			Total	C	H	N	O				S
1	A	369	6074	1943	3050	510	550	21	0	20	0

There are 8 discrepancies between the modelled and reference sequences:

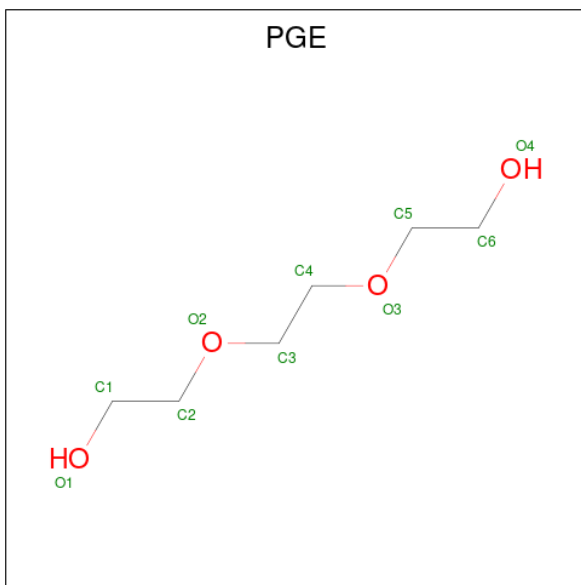
Chain	Residue	Modelled	Actual	Comment	Reference
A	-3	GLY	-	expression tag	UNP P14902
A	-2	PRO	-	expression tag	UNP P14902
A	-1	LEU	-	expression tag	UNP P14902
A	0	GLY	-	expression tag	UNP P14902
A	1	SER	-	expression tag	UNP P14902
A	2	GLY	-	expression tag	UNP P14902
A	3	ILE	-	expression tag	UNP P14902
A	4	GLN	-	expression tag	UNP P14902

- Molecule 2 is TETRAETHYLENE GLYCOL (three-letter code: PG4) (formula: C₈H₁₈O₅).



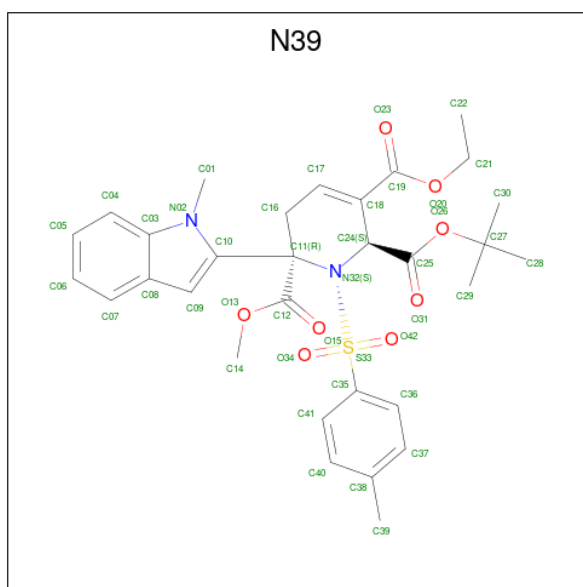
Mol	Chain	Residues	Atoms				ZeroOcc	AltConf
2	A	1	Total	C	H	O	0	0
			31	8	18	5		
2	A	1	Total	C	H	O	0	0
			31	8	18	5		

- Molecule 3 is TRIETHYLENE GLYCOL (three-letter code: PGE) (formula: C₆H₁₄O₄).



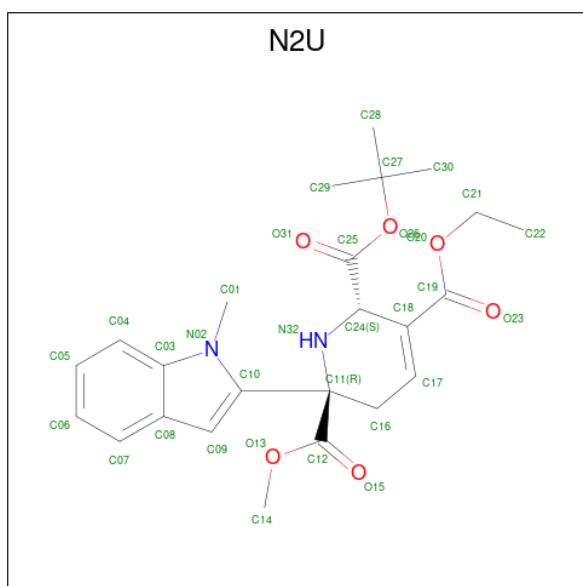
Mol	Chain	Residues	Atoms				ZeroOcc	AltConf
3	A	1	Total	C	H	O	0	0
			24	6	14	4		
3	A	1	Total	C	H	O	0	0
			24	6	14	4		
3	A	1	Total	C	H	O	0	0
			24	6	14	4		
3	A	1	Total	C	H	O	0	0
			24	6	14	4		
3	A	1	Total	C	H	O	0	0
			24	6	14	4		

- Molecule 4 is O1-tert-butyl O2-ethyl O5-methyl (E,5R)-5-(1-methylindol-2-yl)-5-[(4-methylphenyl)sulfonylamino]pent-2-ene-1,2,5-tricarboxylate (three-letter code: N39) (formula: C₃₁H₃₆N₂O₈S) (labeled as "Ligand of Interest" by depositor).



Mol	Chain	Residues	Atoms					ZeroOcc	AltConf	
			Total	C	H	N	O			S
4	A	1	156	62	72	4	16	2	0	1

- Molecule 5 is O2-tert-butyl O3-ethyl O6-methyl (2S,6R)-6-(1-methylindol-2-yl)-2,5-dihydro-1H-pyridine-2,3,6-tricarboxylate (three-letter code: N2U) (formula: $C_{24}H_{30}N_2O_6$) (labeled as "Ligand of Interest" by depositor).



Mol	Chain	Residues	Atoms					ZeroOcc	AltConf
			Total	C	H	N	O		
5	A	1	62	24	30	2	6	0	1

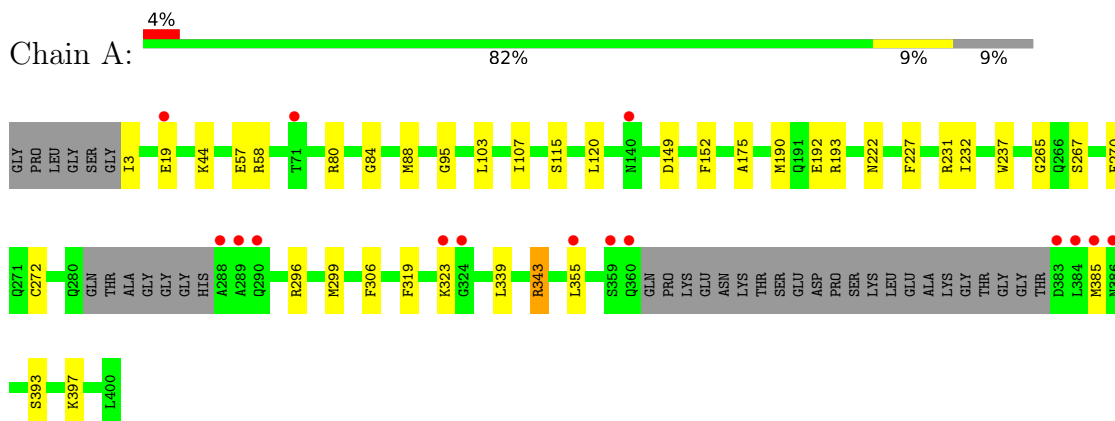
- Molecule 6 is water.

Mol	Chain	Residues	Atoms		ZeroOcc	AltConf
6	A	141	Total 141	O 141	0	0

3 Residue-property plots [i](#)

These plots are drawn for all protein, RNA, DNA and oligosaccharide chains in the entry. The first graphic for a chain summarises the proportions of the various outlier classes displayed in the second graphic. The second graphic shows the sequence view annotated by issues in geometry and electron density. Residues are color-coded according to the number of geometric quality criteria for which they contain at least one outlier: green = 0, yellow = 1, orange = 2 and red = 3 or more. A red dot above a residue indicates a poor fit to the electron density ($RSRZ > 2$). Stretches of 2 or more consecutive residues without any outlier are shown as a green connector. Residues present in the sample, but not in the model, are shown in grey.

- Molecule 1: Indoleamine 2,3-dioxygenase 1



4 Data and refinement statistics

Property	Value	Source
Space group	P 21 21 2	Depositor
Cell constants a, b, c, α , β , γ	106.48Å 109.49Å 36.31Å 90.00° 90.00° 90.00°	Depositor
Resolution (Å)	38.17 – 1.65 48.69 – 1.65	Depositor EDS
% Data completeness (in resolution range)	99.6 (38.17-1.65) 99.6 (48.69-1.65)	Depositor EDS
R_{merge}	0.14	Depositor
R_{sym}	(Not available)	Depositor
$\langle I/\sigma(I) \rangle$ ¹	1.22 (at 1.65Å)	Xtrriage
Refinement program	PHENIX 1.20.1-4487_4487	Depositor
R, R_{free}	0.192 , 0.210 0.191 , 0.206	Depositor DCC
R_{free} test set	2596 reflections (5.00%)	wwPDB-VP
Wilson B-factor (Å ²)	26.4	Xtrriage
Anisotropy	0.287	Xtrriage
Bulk solvent k_{sol} (e/Å ³), B_{sol} (Å ²)	(Not available) , (Not available)	EDS
L-test for twinning ²	$\langle L \rangle = 0.50$, $\langle L^2 \rangle = 0.33$	Xtrriage
Estimated twinning fraction	0.008 for k,h,-l	Xtrriage
F_o, F_c correlation	0.96	EDS
Total number of atoms	6615	wwPDB-VP
Average B, all atoms (Å ²)	33.0	wwPDB-VP

Xtrriage's analysis on translational NCS is as follows: *The largest off-origin peak in the Patterson function is 5.26% of the height of the origin peak. No significant pseudotranslation is detected.*

¹Intensities estimated from amplitudes.

²Theoretical values of $\langle |L| \rangle$, $\langle L^2 \rangle$ for acentric reflections are 0.5, 0.333 respectively for untwinned datasets, and 0.375, 0.2 for perfectly twinned datasets.

5 Model quality [i](#)

5.1 Standard geometry [i](#)

Bond lengths and bond angles in the following residue types are not validated in this section: PG4, N2U, N39, PGE

The Z score for a bond length (or angle) is the number of standard deviations the observed value is removed from the expected value. A bond length (or angle) with $|Z| > 5$ is considered an outlier worth inspection. RMSZ is the root-mean-square of all Z scores of the bond lengths (or angles).

Mol	Chain	Bond lengths		Bond angles	
		RMSZ	# Z >5	RMSZ	# Z >5
1	A	0.31	0/3168	0.54	0/4279

There are no bond length outliers.

There are no bond angle outliers.

There are no chirality outliers.

There are no planarity outliers.

5.2 Too-close contacts [i](#)

In the following table, the Non-H and H(model) columns list the number of non-hydrogen atoms and hydrogen atoms in the chain respectively. The H(added) column lists the number of hydrogen atoms added and optimized by MolProbity. The Clashes column lists the number of clashes within the asymmetric unit, whereas Symm-Clashes lists symmetry-related clashes.

Mol	Chain	Non-H	H(model)	H(added)	Clashes	Symm-Clashes
1	A	3024	3050	2968	23	0
2	A	26	36	36	0	0
3	A	50	70	70	4	0
4	A	84	72	0	11	0
5	A	32	30	0	1	0
6	A	141	0	0	1	0
All	All	3357	3258	3074	32	0

The all-atom clashscore is defined as the number of clashes found per 1000 atoms (including hydrogen atoms). The all-atom clashscore for this structure is 5.

All (32) close contacts within the same asymmetric unit are listed below, sorted by their clash magnitude.

Atom-1	Atom-2	Interatomic distance (Å)	Clash overlap (Å)
4:A:508[B]:N39:C24	4:A:508[B]:N39:N32	1.70	1.53
4:A:508[A]:N39:C24	4:A:508[A]:N39:N32	1.71	1.51
4:A:508[A]:N39:C24	4:A:508[A]:N39:C11	2.54	0.86
4:A:508[B]:N39:C24	4:A:508[B]:N39:C11	2.57	0.82
1:A:355:LEU:HD11	1:A:385:MET:HG3	1.73	0.70
1:A:84:GLY:O	1:A:88:MET:HG2	1.96	0.65
1:A:339:LEU:O	1:A:343:ARG:HG3	2.02	0.59
4:A:508[B]:N39:N32	4:A:508[B]:N39:C25	2.61	0.57
4:A:508[A]:N39:C24	4:A:508[A]:N39:S33	2.92	0.57
1:A:265:GLY:H	4:A:508[A]:N39:C40	2.19	0.56
1:A:95:GLY:HA3	1:A:232:ILE:HD13	1.90	0.53
1:A:44:LYS:HD3	1:A:152:PHE:CE1	2.45	0.51
4:A:508[A]:N39:N32	4:A:508[A]:N39:C25	2.64	0.51
1:A:175:ALA:HB2	6:A:661:HOH:O	2.11	0.50
1:A:393:SER:OG	1:A:397:LYS:HE2	2.11	0.50
1:A:57:GLU:H	1:A:57:GLU:CD	2.15	0.50
1:A:227:PHE:HA	1:A:231:ARG:HD3	1.93	0.50
1:A:296:ARG:O	1:A:299:MET:HB2	2.13	0.49
1:A:319:PHE:CZ	1:A:323:LYS:HE2	2.48	0.49
1:A:19:GLU:OE1	1:A:19:GLU:N	2.27	0.48
4:A:508[B]:N39:C24	4:A:508[B]:N39:S33	2.97	0.46
1:A:58:ARG:HD3	3:A:507:PGE:H52	1.97	0.46
1:A:58:ARG:HD3	3:A:507:PGE:O4	2.15	0.46
1:A:267:SER:HB3	4:A:508[A]:N39:C40	2.47	0.45
1:A:3:ILE:HD12	1:A:306:PHE:CE1	2.52	0.44
1:A:58:ARG:NH1	3:A:507:PGE:O2	2.51	0.44
1:A:115:SER:HB3	1:A:120:LEU:O	2.18	0.43
1:A:103:LEU:HD11	1:A:107:ILE:HD11	1.99	0.43
1:A:58:ARG:O	3:A:507:PGE:H5	2.19	0.42
1:A:190[A]:MET:HB2	1:A:192:GLU:HG3	2.03	0.41
5:A:509[C]:N2U:O26	5:A:509[C]:N2U:C19	2.68	0.41
1:A:270:PHE:HB2	4:A:508[A]:N39:C37	2.52	0.40

There are no symmetry-related clashes.

5.3 Torsion angles [i](#)

5.3.1 Protein backbone [i](#)

In the following table, the Percentiles column shows the percent Ramachandran outliers of the chain as a percentile score with respect to all X-ray entries followed by that with respect to entries of similar resolution.

The Analysed column shows the number of residues for which the backbone conformation was analysed, and the total number of residues.

Mol	Chain	Analysed	Favoured	Allowed	Outliers	Percentiles	
1	A	382/404 (95%)	371 (97%)	11 (3%)	0	100	100

There are no Ramachandran outliers to report.

5.3.2 Protein sidechains [i](#)

In the following table, the Percentiles column shows the percent sidechain outliers of the chain as a percentile score with respect to all X-ray entries followed by that with respect to entries of similar resolution.

The Analysed column shows the number of residues for which the sidechain conformation was analysed, and the total number of residues.

Mol	Chain	Analysed	Rotameric	Outliers	Percentiles	
1	A	343/349 (98%)	333 (97%)	10 (3%)	42	16

All (10) residues with a non-rotameric sidechain are listed below:

Mol	Chain	Res	Type
1	A	80	ARG
1	A	149[A]	ASP
1	A	149[B]	ASP
1	A	193	ARG
1	A	222[A]	ASN
1	A	222[B]	ASN
1	A	237	TRP
1	A	272[A]	CYS
1	A	272[B]	CYS
1	A	343	ARG

Sometimes sidechains can be flipped to improve hydrogen bonding and reduce clashes. All (1) such sidechains are listed below:

Mol	Chain	Res	Type
1	A	215	HIS

5.3.3 RNA [i](#)

There are no RNA molecules in this entry.

5.4 Non-standard residues in protein, DNA, RNA chains [i](#)

There are no non-standard protein/DNA/RNA residues in this entry.

5.5 Carbohydrates [i](#)

There are no monosaccharides in this entry.

5.6 Ligand geometry [i](#)

10 ligands are modelled in this entry.

In the following table, the Counts columns list the number of bonds (or angles) for which Mogul statistics could be retrieved, the number of bonds (or angles) that are observed in the model and the number of bonds (or angles) that are defined in the Chemical Component Dictionary. The Link column lists molecule types, if any, to which the group is linked. The Z score for a bond length (or angle) is the number of standard deviations the observed value is removed from the expected value. A bond length (or angle) with $|Z| > 2$ is considered an outlier worth inspection. RMSZ is the root-mean-square of all Z scores of the bond lengths (or angles).

Mol	Type	Chain	Res	Link	Bond lengths			Bond angles		
					Counts	RMSZ	# Z > 2	Counts	RMSZ	# Z > 2
2	PG4	A	501	-	12,12,12	0.14	0	11,11,11	0.56	0
3	PGE	A	502	-	9,9,9	0.32	0	8,8,8	0.25	0
3	PGE	A	507	-	9,9,9	0.33	0	8,8,8	0.30	0
4	N39	A	508[B]	-	39,45,45	3.27	12 (30%)	51,69,69	3.37	18 (35%)
3	PGE	A	503	-	9,9,9	0.31	0	8,8,8	0.27	0
2	PG4	A	505	-	12,12,12	0.17	0	11,11,11	0.54	0
5	N2U	A	509[C]	-	28,34,34	3.86	11 (39%)	36,51,51	1.97	11 (30%)
3	PGE	A	506	-	9,9,9	0.34	0	8,8,8	0.32	0
3	PGE	A	504	-	9,9,9	0.30	0	8,8,8	0.32	0
4	N39	A	508[A]	-	39,45,45	3.36	12 (30%)	51,69,69	3.48	19 (37%)

In the following table, the Chirals column lists the number of chiral outliers, the number of chiral centers analysed, the number of these observed in the model and the number defined in the Chemical Component Dictionary. Similar counts are reported in the Torsion and Rings columns. '-' means no outliers of that kind were identified.

Mol	Type	Chain	Res	Link	Chirals	Torsions	Rings
2	PG4	A	501	-	-	1/10/10/10	-
3	PGE	A	502	-	-	4/7/7/7	-
3	PGE	A	507	-	-	4/7/7/7	-
4	N39	A	508[B]	-	-	19/36/62/62	0/4/4/4

Continued on next page...

Continued from previous page...

Mol	Type	Chain	Res	Link	Chirals	Torsions	Rings
3	PGE	A	503	-	-	3/7/7/7	-
2	PG4	A	505	-	-	5/10/10/10	-
5	N2U	A	509[C]	-	-	9/24/45/45	0/3/3/3
3	PGE	A	506	-	-	4/7/7/7	-
3	PGE	A	504	-	-	4/7/7/7	-
4	N39	A	508[A]	-	-	21/36/62/62	0/4/4/4

All (35) bond length outliers are listed below:

Mol	Chain	Res	Type	Atoms	Z	Observed(Å)	Ideal(Å)
5	A	509[C]	N2U	C17-C18	17.00	1.59	1.33
4	A	508[A]	N39	C17-C18	12.73	1.52	1.33
4	A	508[B]	N39	C17-C18	12.50	1.52	1.33
4	A	508[A]	N39	S33-N32	7.00	1.76	1.64
4	A	508[B]	N39	O26-C25	6.45	1.44	1.33
4	A	508[A]	N39	O26-C25	6.39	1.44	1.33
4	A	508[A]	N39	C35-S33	6.25	1.85	1.76
4	A	508[B]	N39	S33-N32	6.10	1.75	1.64
4	A	508[B]	N39	C35-S33	5.98	1.84	1.76
5	A	509[C]	N2U	C16-C17	-4.73	1.40	1.50
4	A	508[A]	N39	O20-C19	4.66	1.42	1.33
4	A	508[B]	N39	O20-C19	4.56	1.42	1.33
5	A	509[C]	N2U	O26-C27	-4.46	1.40	1.48
4	A	508[B]	N39	C16-C17	-4.40	1.41	1.50
4	A	508[B]	N39	O13-C12	4.39	1.41	1.33
4	A	508[A]	N39	O13-C12	4.33	1.41	1.33
4	A	508[A]	N39	C16-C17	-4.22	1.41	1.50
4	A	508[A]	N39	C19-C18	3.90	1.55	1.48
5	A	509[C]	N2U	O13-C12	3.66	1.40	1.33
4	A	508[B]	N39	C19-C18	3.65	1.55	1.48
5	A	509[C]	N2U	O20-C19	3.61	1.40	1.33
5	A	509[C]	N2U	O26-C25	3.58	1.39	1.33
4	A	508[B]	N39	O34-S33	3.54	1.47	1.43
4	A	508[A]	N39	O42-S33	3.38	1.47	1.43
4	A	508[A]	N39	C24-C25	-3.34	1.48	1.53
4	A	508[B]	N39	C24-C25	-3.23	1.48	1.53
4	A	508[A]	N39	O34-S33	3.22	1.47	1.43
5	A	509[C]	N2U	C11-C12	-3.22	1.52	1.54
4	A	508[B]	N39	O26-C27	-3.13	1.42	1.48
4	A	508[B]	N39	O42-S33	3.08	1.47	1.43
4	A	508[A]	N39	O26-C27	-3.07	1.42	1.48

Continued on next page...

Continued from previous page...

Mol	Chain	Res	Type	Atoms	Z	Observed(Å)	Ideal(Å)
5	A	509[C]	N2U	C19-C18	2.36	1.52	1.48
5	A	509[C]	N2U	O13-C14	-2.34	1.39	1.45
5	A	509[C]	N2U	C11-C10	2.08	1.55	1.54
5	A	509[C]	N2U	O20-C21	-2.02	1.40	1.46

All (48) bond angle outliers are listed below:

Mol	Chain	Res	Type	Atoms	Z	Observed(°)	Ideal(°)
4	A	508[A]	N39	O42-S33-O34	-11.57	100.77	119.52
4	A	508[A]	N39	C30-C27-C28	11.05	140.15	111.16
4	A	508[B]	N39	C30-C27-C28	10.96	139.89	111.16
4	A	508[B]	N39	O42-S33-O34	-10.61	102.33	119.52
4	A	508[A]	N39	O26-C27-C29	8.50	140.83	107.20
4	A	508[B]	N39	O26-C27-C29	8.33	140.15	107.20
4	A	508[A]	N39	O13-C12-C11	7.60	119.81	110.97
4	A	508[B]	N39	O13-C12-C11	6.69	118.76	110.97
4	A	508[B]	N39	C27-O26-C25	-6.16	113.36	121.65
4	A	508[A]	N39	C30-C27-C29	-5.76	96.07	111.16
4	A	508[A]	N39	C27-O26-C25	-5.69	113.99	121.65
4	A	508[B]	N39	C30-C27-C29	-5.65	96.36	111.16
4	A	508[A]	N39	C29-C27-C28	-5.32	97.22	111.16
4	A	508[B]	N39	C29-C27-C28	-5.27	97.33	111.16
5	A	509[C]	N2U	O20-C19-C18	5.20	119.59	112.10
4	A	508[A]	N39	O20-C19-C18	5.05	119.39	112.10
4	A	508[B]	N39	O20-C19-C18	4.74	118.93	112.10
5	A	509[C]	N2U	O23-C19-C18	-4.27	118.99	124.34
5	A	509[C]	N2U	O15-C12-C11	-4.02	119.68	123.85
4	A	508[A]	N39	C25-C24-C18	-3.79	106.70	111.86
4	A	508[B]	N39	C25-C24-C18	-3.69	106.83	111.86
4	A	508[A]	N39	O23-C19-C18	-3.51	119.94	124.34
4	A	508[B]	N39	O23-C19-C18	-3.50	119.95	124.34
4	A	508[B]	N39	O26-C25-O31	-3.32	119.71	125.67
5	A	509[C]	N2U	C16-C11-N32	3.26	112.06	108.01
4	A	508[A]	N39	O26-C25-O31	-3.25	119.84	125.67
4	A	508[A]	N39	O15-C12-C11	-3.14	120.58	124.16
4	A	508[B]	N39	O26-C27-C30	-2.99	95.39	107.20
4	A	508[B]	N39	O15-C12-C11	-2.90	120.86	124.16
4	A	508[A]	N39	O31-C25-C24	-2.89	120.13	124.28
4	A	508[A]	N39	O26-C27-C30	-2.87	95.83	107.20
5	A	509[C]	N2U	C25-C24-C18	-2.87	108.03	111.87
4	A	508[B]	N39	O31-C25-C24	-2.77	120.30	124.28
4	A	508[B]	N39	O42-S33-C35	2.69	111.45	108.05

Continued on next page...

Continued from previous page...

Mol	Chain	Res	Type	Atoms	Z	Observed(°)	Ideal(°)
5	A	509[C]	N2U	O26-C25-O31	-2.66	120.90	125.67
4	A	508[A]	N39	C09-C10-C11	-2.66	125.86	130.41
5	A	509[C]	N2U	C01-N02-C10	2.64	126.67	124.09
5	A	509[C]	N2U	C09-C10-C11	-2.63	125.90	130.41
4	A	508[A]	N39	O26-C27-C28	-2.55	97.11	107.20
5	A	509[C]	N2U	O13-C12-O15	-2.54	119.49	123.93
4	A	508[B]	N39	C09-C10-C11	-2.53	126.08	130.41
4	A	508[A]	N39	O13-C12-O15	-2.47	119.60	123.93
5	A	509[C]	N2U	O26-C27-C29	2.46	116.94	107.20
4	A	508[B]	N39	O26-C27-C28	-2.39	97.74	107.20
5	A	509[C]	N2U	O31-C25-C24	-2.26	121.60	124.48
4	A	508[A]	N39	C35-S33-N32	2.10	112.42	105.01
4	A	508[A]	N39	C01-N02-C10	2.09	126.14	124.09
4	A	508[B]	N39	O13-C12-O15	-2.03	120.38	123.93

There are no chirality outliers.

All (74) torsion outliers are listed below:

Mol	Chain	Res	Type	Atoms
4	A	508[A]	N39	C16-C11-C12-O13
4	A	508[A]	N39	C16-C11-C12-O15
4	A	508[A]	N39	C24-C25-O26-C27
4	A	508[B]	N39	C18-C24-C25-O26
5	A	509[C]	N2U	C10-C11-C12-O13
5	A	509[C]	N2U	C10-C11-C12-O15
5	A	509[C]	N2U	C16-C11-C12-O13
5	A	509[C]	N2U	C16-C11-C12-O15
5	A	509[C]	N2U	N32-C11-C12-O13
5	A	509[C]	N2U	N32-C11-C12-O15
4	A	508[A]	N39	C41-C35-S33-N32
4	A	508[A]	N39	C30-C27-O26-C25
4	A	508[B]	N39	C29-C27-O26-C25
4	A	508[A]	N39	C36-C35-S33-N32
4	A	508[B]	N39	C18-C19-O20-C21
4	A	508[A]	N39	C29-C27-O26-C25
4	A	508[B]	N39	C30-C27-O26-C25
4	A	508[B]	N39	O23-C19-O20-C21
4	A	508[A]	N39	O31-C25-O26-C27
4	A	508[B]	N39	O31-C25-O26-C27
4	A	508[B]	N39	C28-C27-O26-C25
4	A	508[B]	N39	C24-C25-O26-C27
4	A	508[A]	N39	C28-C27-O26-C25

Continued on next page...

Continued from previous page...

Mol	Chain	Res	Type	Atoms
3	A	502	PGE	O2-C3-C4-O3
3	A	506	PGE	O2-C3-C4-O3
3	A	503	PGE	O1-C1-C2-O2
2	A	505	PG4	O4-C7-C8-O5
3	A	507	PGE	O3-C5-C6-O4
3	A	502	PGE	O3-C5-C6-O4
3	A	506	PGE	O1-C1-C2-O2
4	A	508[B]	N39	O15-C12-O13-C14
3	A	507	PGE	C4-C3-O2-C2
3	A	507	PGE	O2-C3-C4-O3
4	A	508[A]	N39	O15-C12-O13-C14
4	A	508[B]	N39	C41-C35-S33-O34
4	A	508[B]	N39	C36-C35-S33-O34
4	A	508[B]	N39	C11-C12-O13-C14
5	A	509[C]	N2U	O15-C12-O13-C14
2	A	505	PG4	O1-C1-C2-O2
4	A	508[B]	N39	C41-C35-S33-N32
4	A	508[B]	N39	C18-C24-C25-O31
3	A	504	PGE	C6-C5-O3-C4
4	A	508[B]	N39	C36-C35-S33-N32
4	A	508[A]	N39	N32-C24-C25-O26
4	A	508[A]	N39	N32-C24-C25-O31
3	A	506	PGE	C6-C5-O3-C4
4	A	508[A]	N39	C11-C12-O13-C14
2	A	505	PG4	C4-C3-O2-C2
3	A	504	PGE	C1-C2-O2-C3
4	A	508[B]	N39	C10-C11-C12-O13
4	A	508[B]	N39	C10-C11-C12-O15
4	A	508[A]	N39	C36-C35-S33-O42
2	A	501	PG4	O3-C5-C6-O4
4	A	508[A]	N39	C41-C35-S33-O42
3	A	503	PGE	O2-C3-C4-O3
3	A	506	PGE	C4-C3-O2-C2
3	A	502	PGE	O1-C1-C2-O2
2	A	505	PG4	C6-C5-O3-C4
5	A	509[C]	N2U	C18-C24-C25-O26
4	A	508[A]	N39	C24-N32-S33-O42
3	A	504	PGE	O2-C3-C4-O3
3	A	504	PGE	O1-C1-C2-O2
4	A	508[A]	N39	C18-C24-C25-O26
4	A	508[A]	N39	C18-C24-C25-O31
3	A	503	PGE	C4-C3-O2-C2

Continued on next page...

Continued from previous page...

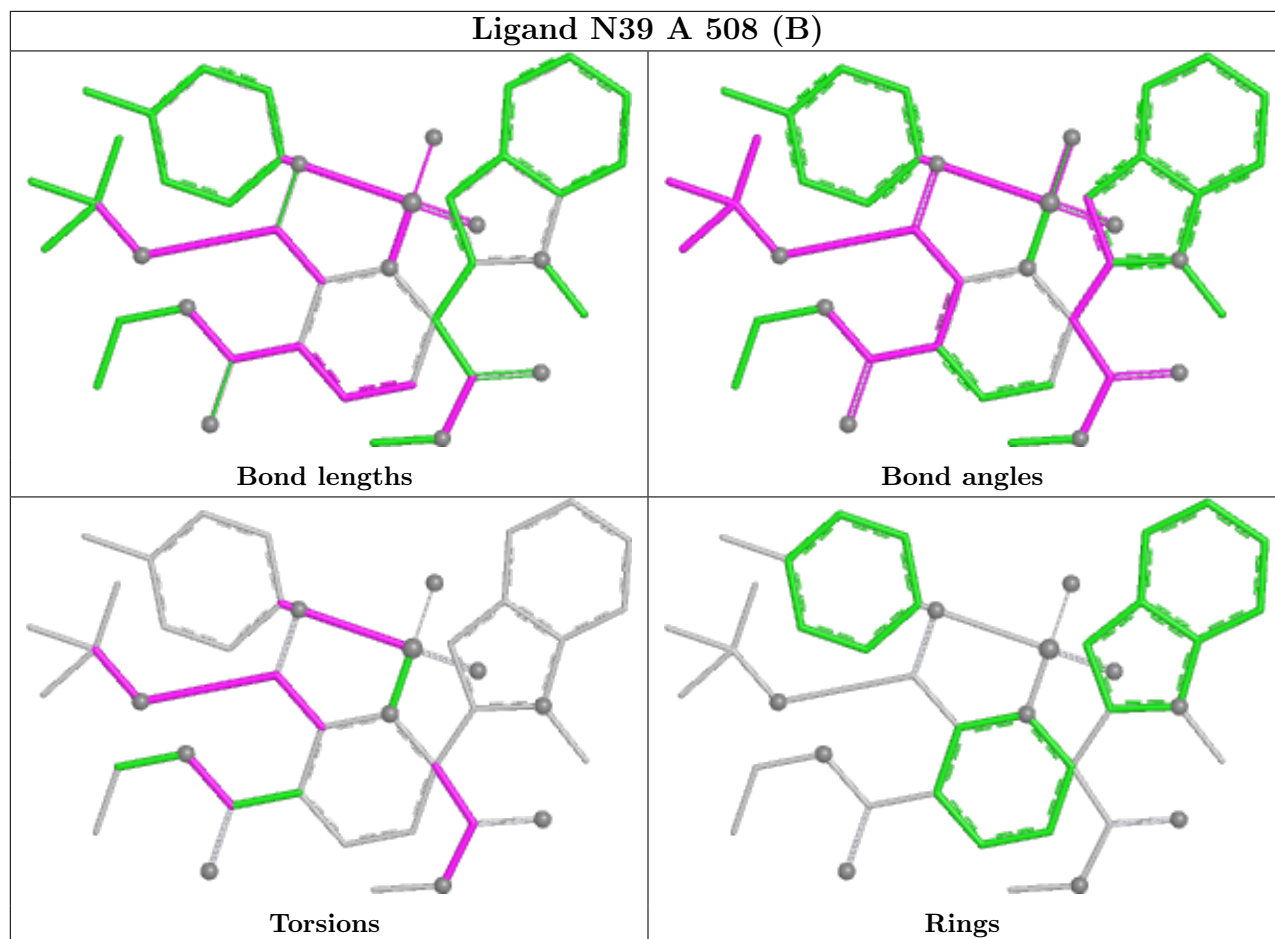
Mol	Chain	Res	Type	Atoms
5	A	509[C]	N2U	C11-C12-O13-C14
4	A	508[B]	N39	N32-C11-C12-O13
4	A	508[B]	N39	N32-C24-C25-O26
4	A	508[A]	N39	C41-C35-S33-O34
4	A	508[A]	N39	C24-N32-S33-O34
2	A	505	PG4	C8-C7-O4-C6
4	A	508[A]	N39	C36-C35-S33-O34
3	A	507	PGE	C6-C5-O3-C4
3	A	502	PGE	C3-C4-O3-C5

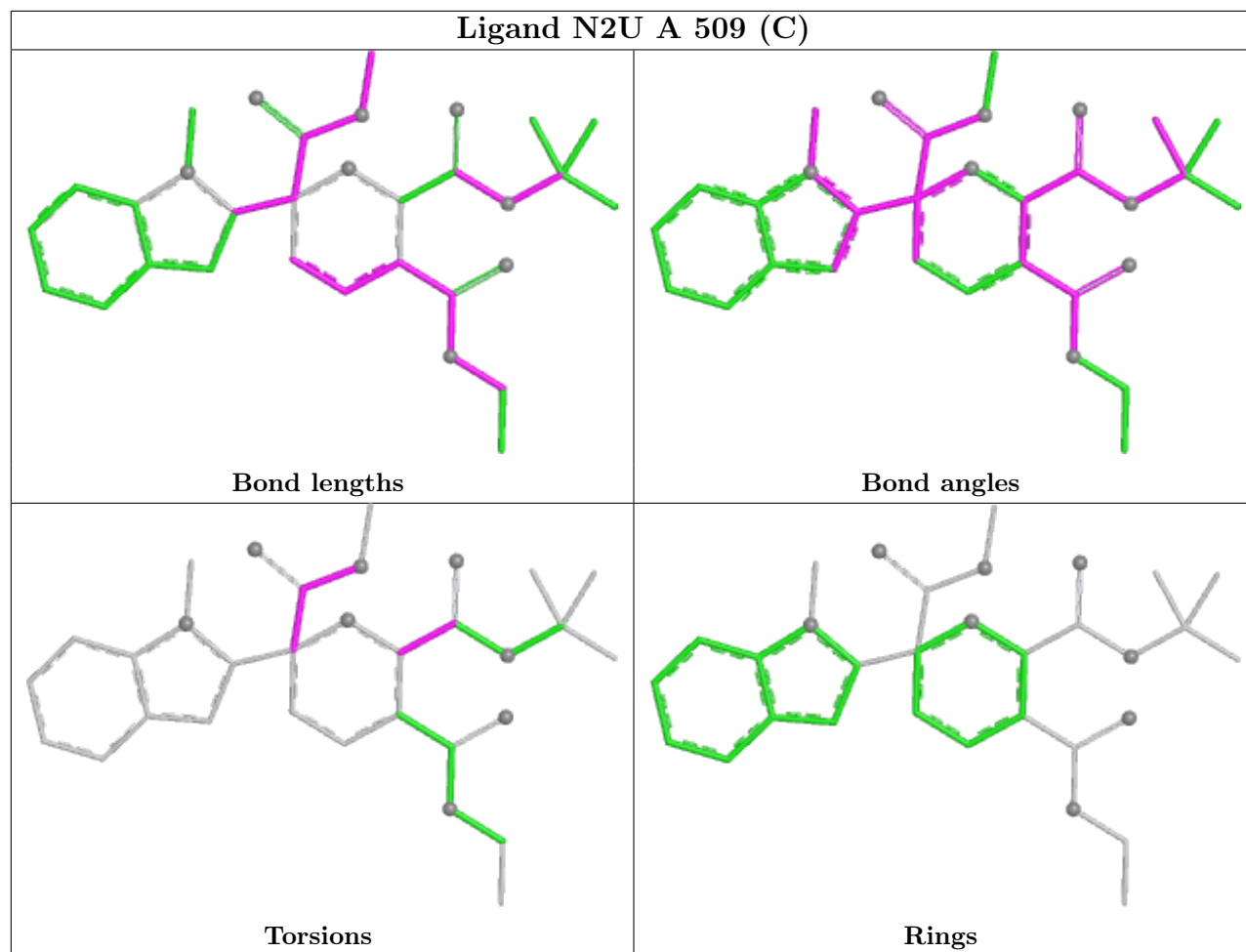
There are no ring outliers.

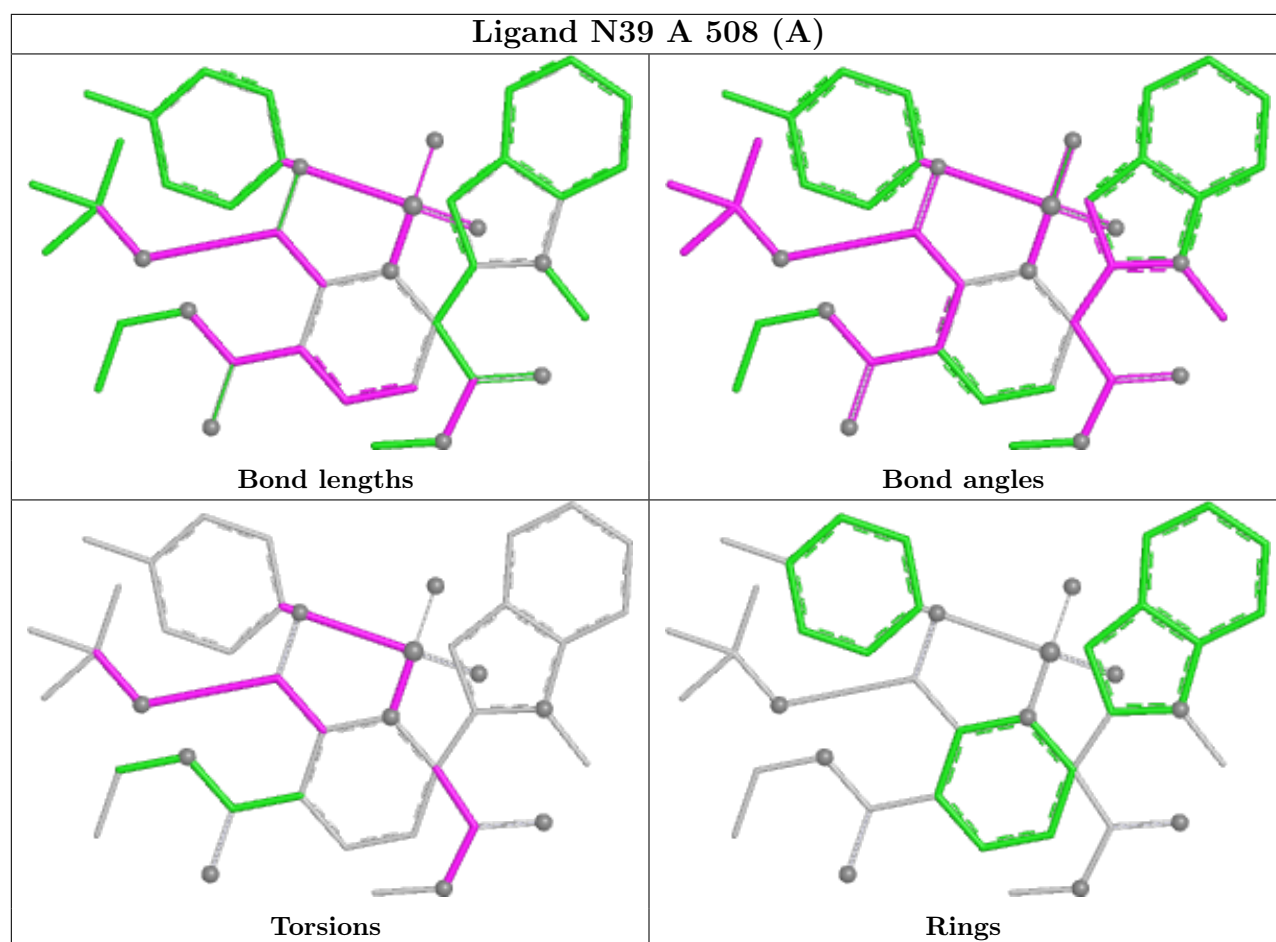
4 monomers are involved in 16 short contacts:

Mol	Chain	Res	Type	Clashes	Symm-Clashes
3	A	507	PGE	4	0
4	A	508[B]	N39	4	0
5	A	509[C]	N2U	1	0
4	A	508[A]	N39	7	0

The following is a two-dimensional graphical depiction of Mogul quality analysis of bond lengths, bond angles, torsion angles, and ring geometry for all instances of the Ligand of Interest. In addition, ligands with molecular weight > 250 and outliers as shown on the validation Tables will also be included. For torsion angles, if less than 5% of the Mogul distribution of torsion angles is within 10 degrees of the torsion angle in question, then that torsion angle is considered an outlier. Any bond that is central to one or more torsion angles identified as an outlier by Mogul will be highlighted in the graph. For rings, the root-mean-square deviation (RMSD) between the ring in question and similar rings identified by Mogul is calculated over all ring torsion angles. If the average RMSD is greater than 60 degrees and the minimal RMSD between the ring in question and any Mogul-identified rings is also greater than 60 degrees, then that ring is considered an outlier. The outliers are highlighted in purple. The color gray indicates Mogul did not find sufficient equivalents in the CSD to analyse the geometry.







5.7 Other polymers [i](#)

There are no such residues in this entry.

5.8 Polymer linkage issues [i](#)

There are no chain breaks in this entry.

6 Fit of model and data [i](#)

6.1 Protein, DNA and RNA chains [i](#)

In the following table, the column labelled ‘#RSRZ> 2’ contains the number (and percentage) of RSRZ outliers, followed by percent RSRZ outliers for the chain as percentile scores relative to all X-ray entries and entries of similar resolution. The OWAB column contains the minimum, median, 95th percentile and maximum values of the occupancy-weighted average B-factor per residue. The column labelled ‘Q< 0.9’ lists the number of (and percentage) of residues with an average occupancy less than 0.9.

Mol	Chain	Analysed	<RSRZ>	#RSRZ>2	OWAB(Å ²)	Q<0.9
1	A	369/404 (91%)	0.16	15 (4%) 37 37	18, 27, 45, 71	0

All (15) RSRZ outliers are listed below:

Mol	Chain	Res	Type	RSRZ
1	A	383	ASP	3.4
1	A	288	ALA	3.3
1	A	384	LEU	3.3
1	A	355	LEU	3.0
1	A	359[A]	SER	2.9
1	A	386	ASN	2.6
1	A	140	ASN	2.6
1	A	290	GLN	2.5
1	A	324	GLY	2.5
1	A	385	MET	2.4
1	A	360[A]	GLN	2.3
1	A	323	LYS	2.1
1	A	19	GLU	2.1
1	A	289	ALA	2.1
1	A	71	THR	2.1

6.2 Non-standard residues in protein, DNA, RNA chains [i](#)

There are no non-standard protein/DNA/RNA residues in this entry.

6.3 Carbohydrates [i](#)

There are no monosaccharides in this entry.

6.4 Ligands

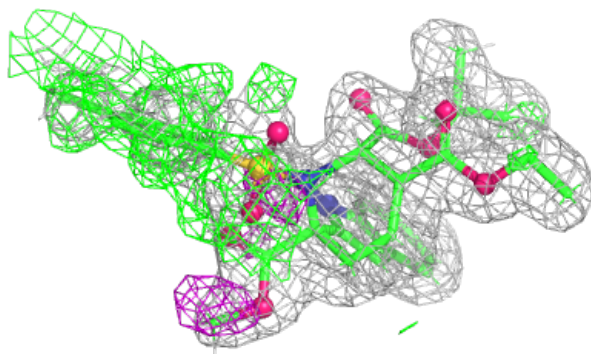
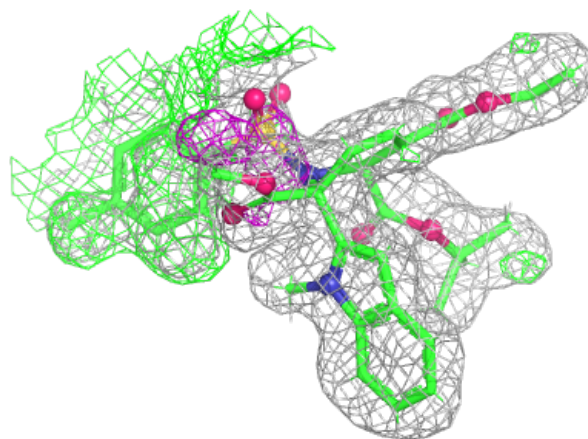
In the following table, the Atoms column lists the number of modelled atoms in the group and the number defined in the chemical component dictionary. The B-factors column lists the minimum, median, 95th percentile and maximum values of B factors of atoms in the group. The column labelled 'Q< 0.9' lists the number of atoms with occupancy less than 0.9.

Mol	Type	Chain	Res	Atoms	RSCC	RSR	B-factors(Å ²)	Q<0.9
3	PGE	A	507	10/10	0.60	0.24	50,64,79,80	0
3	PGE	A	504	10/10	0.67	0.30	53,66,75,76	0
3	PGE	A	503	10/10	0.74	0.27	49,68,85,97	0
3	PGE	A	502	10/10	0.75	0.23	47,58,68,69	0
3	PGE	A	506	10/10	0.80	0.21	42,55,71,76	0
4	N39	A	508[A]	42/42	0.80	0.22	18,29,36,36	78
4	N39	A	508[B]	42/42	0.80	0.22	23,30,36,37	78
2	PG4	A	505	13/13	0.84	0.20	35,49,68,80	0
5	N2U	A	509[C]	32/32	0.89	0.12	23,29,36,36	62
2	PG4	A	501	13/13	0.90	0.13	30,40,56,63	0

The following is a graphical depiction of the model fit to experimental electron density of all instances of the Ligand of Interest. In addition, ligands with molecular weight > 250 and outliers as shown on the geometry validation Tables will also be included. Each fit is shown from different orientation to approximate a three-dimensional view.

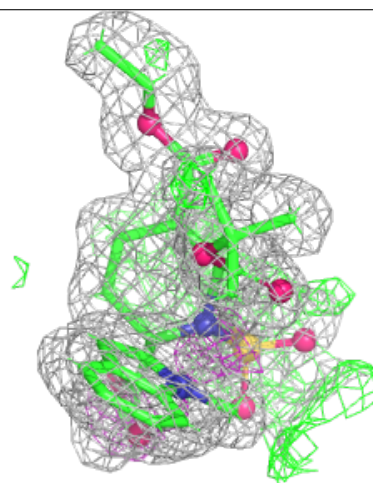
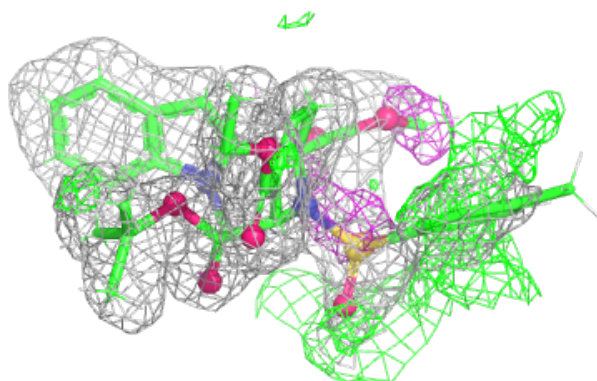
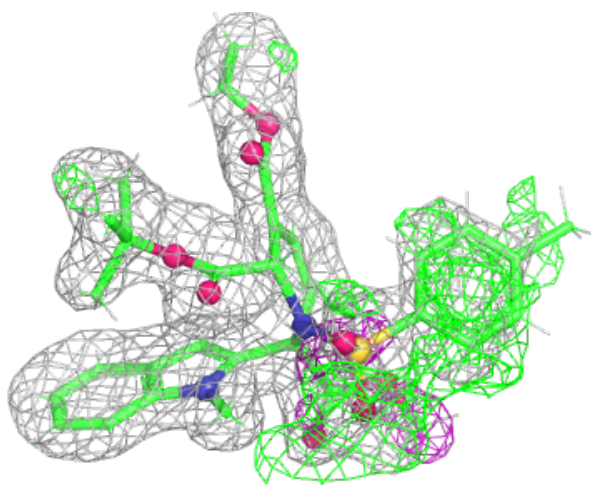
Electron density around N39 A 508 (A):

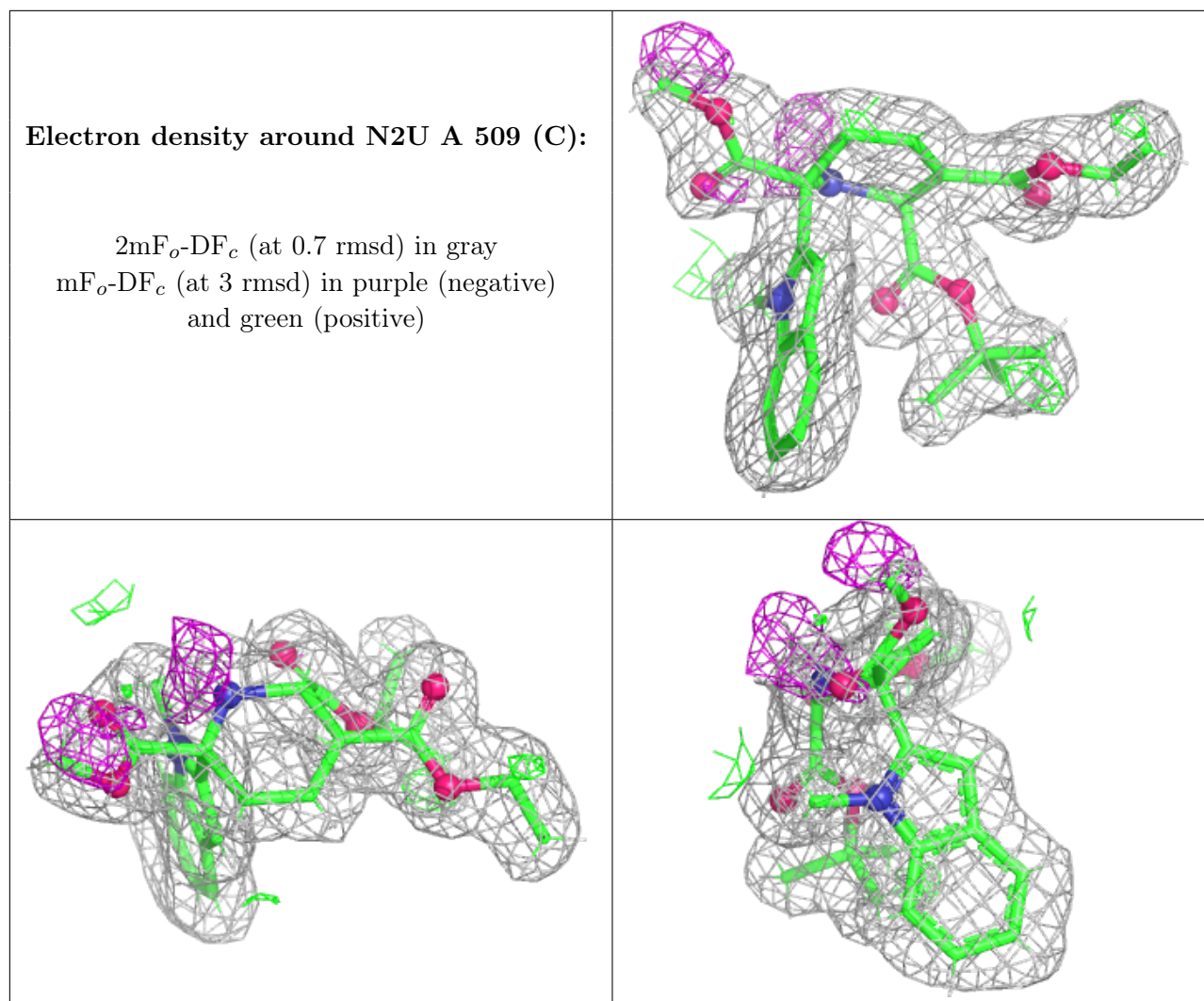
$2mF_o-DF_c$ (at 0.7 rmsd) in gray
 mF_o-DF_c (at 3 rmsd) in purple (negative)
and green (positive)



Electron density around N39 A 508 (B):

$2mF_o-DF_c$ (at 0.7 rmsd) in gray
 mF_o-DF_c (at 3 rmsd) in purple (negative)
and green (positive)





6.5 Other polymers [i](#)

There are no such residues in this entry.