



Full wwPDB X-ray Structure Validation Report ⓘ

May 15, 2020 – 11:04 am BST

PDB ID : 4A0F
Title : Structure of selenomethionine substituted bifunctional DAPA aminotransferase-dethiobiotin synthetase from *Arabidopsis thaliana* in its apo form.
Authors : Cobessi, D.; Dumas, R.; Pautre, V.; Meinguet, C.; Ferrer, J.L.; Alban, C.
Deposited on : 2011-09-09
Resolution : 2.71 Å(reported)

This is a Full wwPDB X-ray Structure Validation Report for a publicly released PDB entry.

We welcome your comments at validation@mail.wwpdb.org

A user guide is available at

<https://www.wwpdb.org/validation/2017/XrayValidationReportHelp>

with specific help available everywhere you see the ⓘ symbol.

The following versions of software and data (see [references ⓘ](#)) were used in the production of this report:

MolProbity : 4.02b-467
Mogul : 1.8.5 (274361), CSD as541be (2020)
Xtriage (Phenix) : 1.13
EDS : 2.11
Percentile statistics : 20191225.v01 (using entries in the PDB archive December 25th 2019)
Refmac : 5.8.0158
CCP4 : 7.0.044 (Gargrove)
Ideal geometry (proteins) : Engh & Huber (2001)
Ideal geometry (DNA, RNA) : Parkinson et al. (1996)
Validation Pipeline (wwPDB-VP) : 2.11

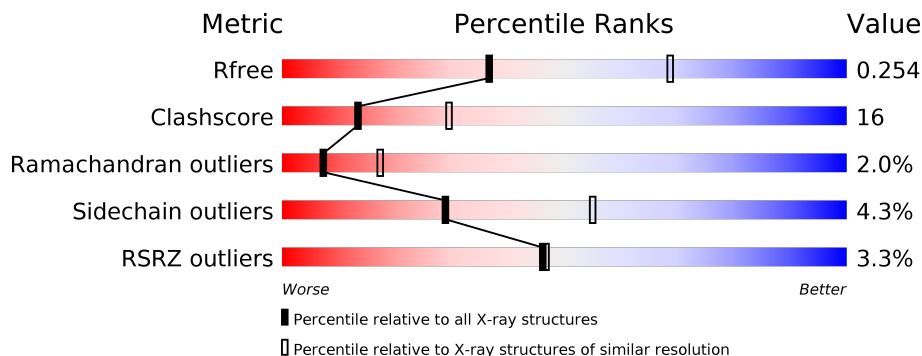
1 Overall quality at a glance

The following experimental techniques were used to determine the structure:

X-RAY DIFFRACTION

The reported resolution of this entry is 2.71 Å.

Percentile scores (ranging between 0-100) for global validation metrics of the entry are shown in the following graphic. The table shows the number of entries on which the scores are based.



Metric	Whole archive (#Entries)	Similar resolution (#Entries, resolution range(Å))
R_{free}	130704	3359 (2.74-2.70)
Clashscore	141614	3686 (2.74-2.70)
Ramachandran outliers	138981	3622 (2.74-2.70)
Sidechain outliers	138945	3623 (2.74-2.70)
RSRZ outliers	127900	3276 (2.74-2.70)

The table below summarises the geometric issues observed across the polymeric chains and their fit to the electron density. The red, orange, yellow and green segments on the lower bar indicate the fraction of residues that contain outliers for ≥ 3 , 2, 1 and 0 types of geometric quality criteria respectively. A grey segment represents the fraction of residues that are not modelled. The numeric value for each fraction is indicated below the corresponding segment, with a dot representing fractions $\leq 5\%$. The upper red bar (where present) indicates the fraction of residues that have poor fit to the electron density. The numeric value is given above the bar.

Mol	Chain	Length	Quality of chain
1	A	831	 4% 64% 23% 10%
1	B	831	 2% 60% 28% 10%

The following table lists non-polymeric compounds, carbohydrate monomers and non-standard residues in protein, DNA, RNA chains that are outliers for geometric or electron-density-fit criteria:

Mol	Type	Chain	Res	Chirality	Geometry	Clashes	Electron density
3	SO4	B	1810	-	-	X	-

2 Entry composition i

There are 4 unique types of molecules in this entry. The entry contains 11317 atoms, of which 0 are hydrogens and 0 are deuteriums.

In the tables below, the ZeroOcc column contains the number of atoms modelled with zero occupancy, the AltConf column contains the number of residues with at least one atom in alternate conformation and the Trace column contains the number of residues modelled with at most 2 atoms.

- Molecule 1 is a protein called ADENOSYLMETHIONINE-8-AMINO-7-OXONONANOATE AMINOTRANSFERASE.

Mol	Chain	Residues	Atoms						ZeroOcc	AltConf	Trace
			Total	C	N	O	S	Se			
1	A	746	5568	3562	937	1037	16	16	0	1	0
1	B	750	5619	3598	944	1046	16	15	0	0	0

There are 42 discrepancies between the modelled and reference sequences:

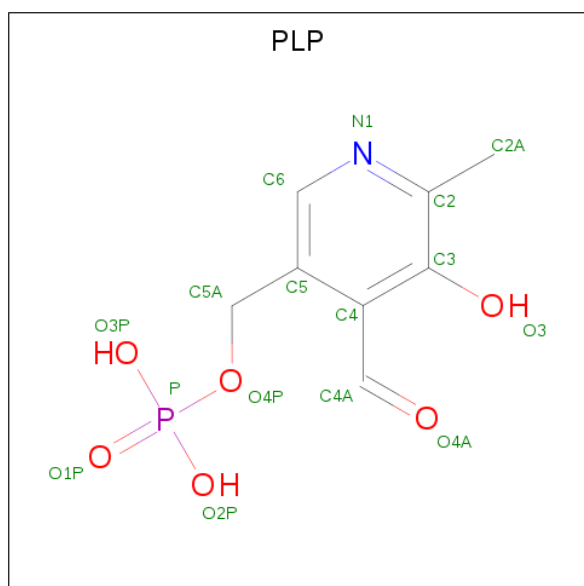
Chain	Residue	Modelled	Actual	Comment	Reference
A	-19	GLY	-	expression tag	UNP B0F481
A	-18	SER	-	expression tag	UNP B0F481
A	-17	SER	-	expression tag	UNP B0F481
A	-16	HIS	-	expression tag	UNP B0F481
A	-15	HIS	-	expression tag	UNP B0F481
A	-14	HIS	-	expression tag	UNP B0F481
A	-13	HIS	-	expression tag	UNP B0F481
A	-12	HIS	-	expression tag	UNP B0F481
A	-11	HIS	-	expression tag	UNP B0F481
A	-10	SER	-	expression tag	UNP B0F481
A	-9	SER	-	expression tag	UNP B0F481
A	-8	GLY	-	expression tag	UNP B0F481
A	-7	LEU	-	expression tag	UNP B0F481
A	-6	VAL	-	expression tag	UNP B0F481
A	-5	PRO	-	expression tag	UNP B0F481
A	-4	ARG	-	expression tag	UNP B0F481
A	-3	GLY	-	expression tag	UNP B0F481
A	-2	SER	-	expression tag	UNP B0F481
A	-1	HIS	-	expression tag	UNP B0F481
A	0	MSE	-	expression tag	UNP B0F481
A	326	TYR	PHE	engineered mutation	UNP B0F481
B	-19	GLY	-	expression tag	UNP B0F481
B	-18	SER	-	expression tag	UNP B0F481
B	-17	SER	-	expression tag	UNP B0F481

Continued on next page...

Continued from previous page...

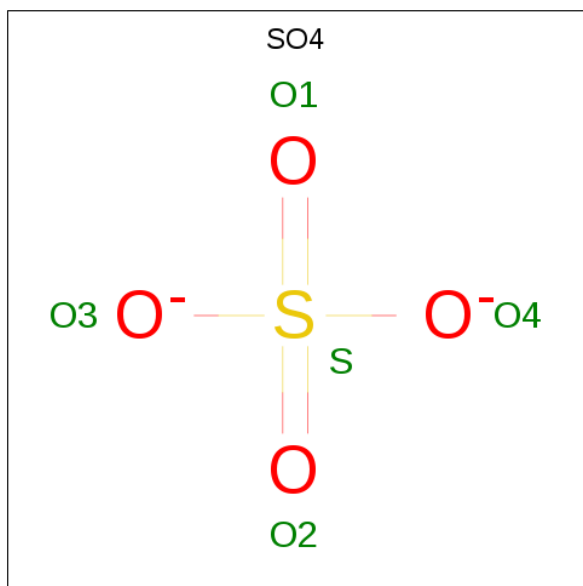
Chain	Residue	Modelled	Actual	Comment	Reference
B	-16	HIS	-	expression tag	UNP B0F481
B	-15	HIS	-	expression tag	UNP B0F481
B	-14	HIS	-	expression tag	UNP B0F481
B	-13	HIS	-	expression tag	UNP B0F481
B	-12	HIS	-	expression tag	UNP B0F481
B	-11	HIS	-	expression tag	UNP B0F481
B	-10	SER	-	expression tag	UNP B0F481
B	-9	SER	-	expression tag	UNP B0F481
B	-8	GLY	-	expression tag	UNP B0F481
B	-7	LEU	-	expression tag	UNP B0F481
B	-6	VAL	-	expression tag	UNP B0F481
B	-5	PRO	-	expression tag	UNP B0F481
B	-4	ARG	-	expression tag	UNP B0F481
B	-3	GLY	-	expression tag	UNP B0F481
B	-2	SER	-	expression tag	UNP B0F481
B	-1	HIS	-	expression tag	UNP B0F481
B	0	MSE	-	expression tag	UNP B0F481
B	326	TYR	PHE	engineered mutation	UNP B0F481

- Molecule 2 is PYRIDOXAL-5'-PHOSPHATE (three-letter code: PLP) (formula: C₈H₁₀NO₆P).



Mol	Chain	Residues	Atoms					ZeroOcc	AltConf
			Total	C	N	O	P		
2	A	1	15	8	1	5	1	0	0
2	B	1	15	8	1	5	1	0	0

- Molecule 3 is SULFATE ION (three-letter code: SO4) (formula: O₄S).



Mol	Chain	Residues	Atoms	ZeroOcc	AltConf
3	A	1	Total O S 5 4 1	0	0
3	A	1	Total O S 5 4 1	0	0
3	B	1	Total O S 5 4 1	0	0
3	B	1	Total O S 5 4 1	0	0

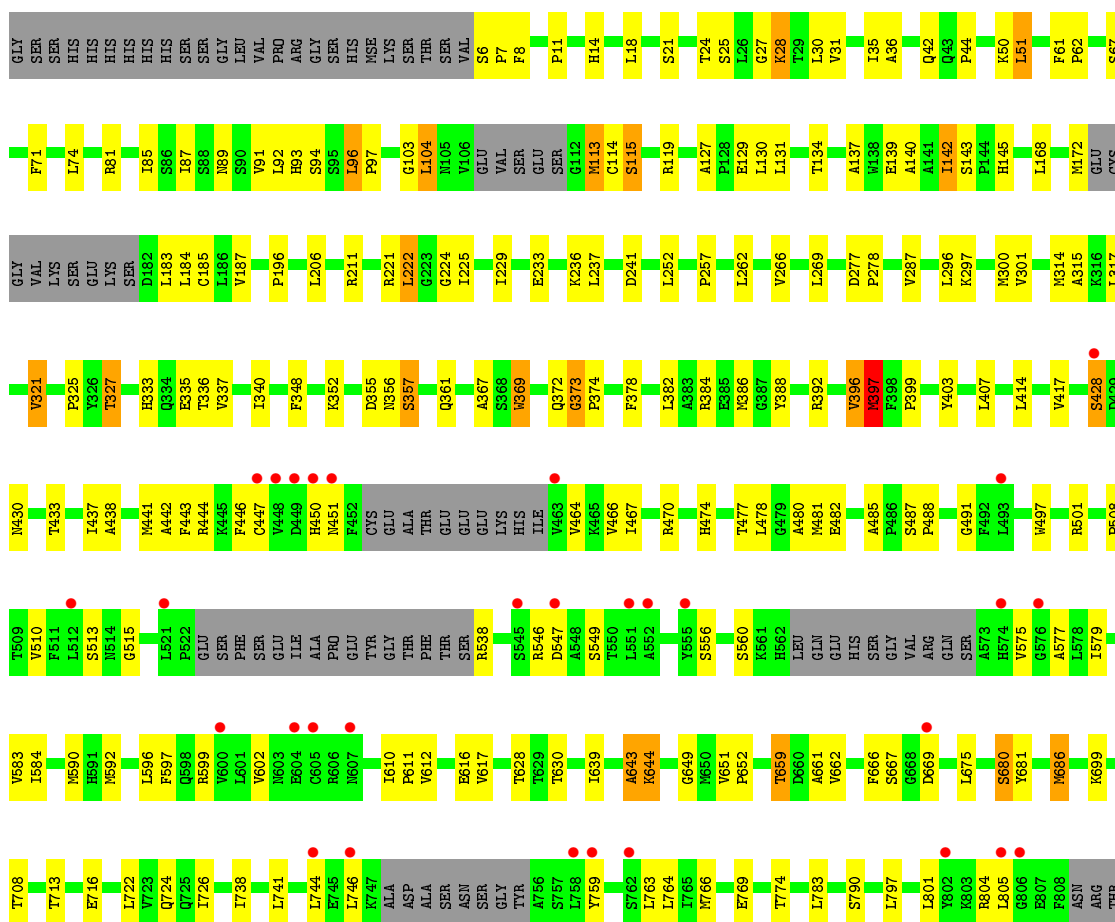
- Molecule 4 is water.

Mol	Chain	Residues	Atoms	ZeroOcc	AltConf
4	A	50	Total O 50 50	0	0
4	B	30	Total O 30 30	0	0

3 Residue-property plots [i](#)

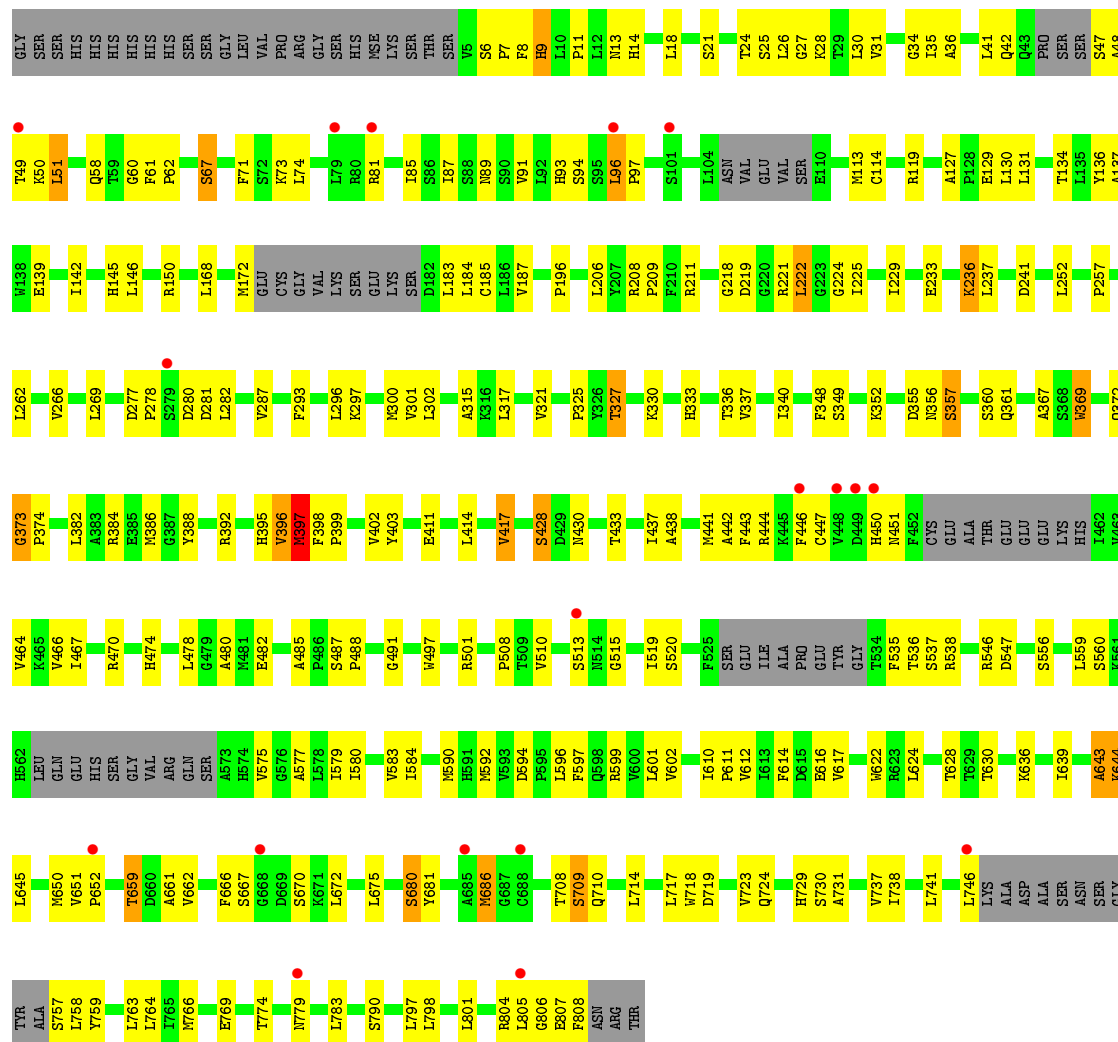
These plots are drawn for all protein, RNA and DNA chains in the entry. The first graphic for a chain summarises the proportions of the various outlier classes displayed in the second graphic. The second graphic shows the sequence view annotated by issues in geometry and electron density. Residues are color-coded according to the number of geometric quality criteria for which they contain at least one outlier: green = 0, yellow = 1, orange = 2 and red = 3 or more. A red dot above a residue indicates a poor fit to the electron density ($RSRZ > 2$). Stretches of 2 or more consecutive residues without any outlier are shown as a green connector. Residues present in the sample, but not in the model, are shown in grey.

• Molecule 1: ADENOSYLMETHIONINE-8-AMINO-7-OXONONANOATE AMINOTRANSFERASE



• Molecule 1: ADENOSYLMETHIONINE-8-AMINO-7-OXONONANOATE AMINOTRANSFERASE





4 Data and refinement statistics

Property	Value	Source
Space group	C 1 2 1	Depositor
Cell constants a, b, c, α , β , γ	233.67Å 75.97Å 88.63Å 90.00° 109.20° 90.00°	Depositor
Resolution (Å)	41.85 – 2.71 41.85 – 2.71	Depositor EDS
% Data completeness (in resolution range)	99.1 (41.85-2.71) 99.2 (41.85-2.71)	Depositor EDS
R_{merge}	0.08	Depositor
R_{sym}	(Not available)	Depositor
$\langle I/\sigma(I) \rangle$ ¹	2.82 (at 2.73Å)	Xtrriage
Refinement program	PHENIX (PHENIX.REFINE)	Depositor
R, R_{free}	0.200 , 0.261 0.192 , 0.254	Depositor DCC
R_{free} test set	1990 reflections (5.03%)	wwPDB-VP
Wilson B-factor (Å ²)	48.0	Xtrriage
Anisotropy	0.463	Xtrriage
Bulk solvent k_{sol} (e/Å ³), B_{sol} (Å ²)	0.31 , 46.0	EDS
L-test for twinning ²	$\langle L \rangle = 0.49$, $\langle L^2 \rangle = 0.32$	Xtrriage
Estimated twinning fraction	No twinning to report.	Xtrriage
F_o, F_c correlation	0.93	EDS
Total number of atoms	11317	wwPDB-VP
Average B, all atoms (Å ²)	58.0	wwPDB-VP

Xtrriage's analysis on translational NCS is as follows: *The largest off-origin peak in the Patterson function is 3.71% of the height of the origin peak. No significant pseudotranslation is detected.*

¹Intensities estimated from amplitudes.

²Theoretical values of $\langle |L| \rangle$, $\langle L^2 \rangle$ for acentric reflections are 0.5, 0.333 respectively for untwinned datasets, and 0.375, 0.2 for perfectly twinned datasets.

5 Model quality [i](#)

5.1 Standard geometry [i](#)

Bond lengths and bond angles in the following residue types are not validated in this section: SO4, PLP

The Z score for a bond length (or angle) is the number of standard deviations the observed value is removed from the expected value. A bond length (or angle) with $|Z| > 5$ is considered an outlier worth inspection. RMSZ is the root-mean-square of all Z scores of the bond lengths (or angles).

Mol	Chain	Bond lengths		Bond angles	
		RMSZ	# Z >5	RMSZ	# Z >5
1	A	0.44	0/5681	0.60	1/7722 (0.0%)
1	B	0.45	0/5731	0.60	0/7787
All	All	0.45	0/11412	0.60	1/15509 (0.0%)

There are no bond length outliers.

All (1) bond angle outliers are listed below:

Mol	Chain	Res	Type	Atoms	Z	Observed(°)	Ideal(°)
1	A	44	PRO	N-CA-CB	6.07	110.59	103.30

There are no chirality outliers.

There are no planarity outliers.

5.2 Too-close contacts [i](#)

In the following table, the Non-H and H(model) columns list the number of non-hydrogen atoms and hydrogen atoms in the chain respectively. The H(added) column lists the number of hydrogen atoms added and optimized by MolProbity. The Clashes column lists the number of clashes within the asymmetric unit, whereas Symm-Clashes lists symmetry related clashes.

Mol	Chain	Non-H	H(model)	H(added)	Clashes	Symm-Clashes
1	A	5568	0	5367	172	0
1	B	5619	0	5425	206	0
2	A	15	0	6	2	0
2	B	15	0	6	2	0
3	A	10	0	0	1	0
3	B	10	0	0	3	0
4	A	50	0	0	1	0
4	B	30	0	0	2	0

Continued on next page...

Continued from previous page...

Mol	Chain	Non-H	H(model)	H(added)	Clashes	Symm-Clashes
All	All	11317	0	10804	355	0

The all-atom clashscore is defined as the number of clashes found per 1000 atoms (including hydrogen atoms). The all-atom clashscore for this structure is 16.

All (355) close contacts within the same asymmetric unit are listed below, sorted by their clash magnitude.

Atom-1	Atom-2	Interatomic distance (Å)	Clash overlap (Å)
1:A:21:SER:HB2	1:A:28:LYS:HD3	1.41	1.01
1:B:21:SER:HB2	1:B:28:LYS:HD3	1.41	1.00
1:A:510:VAL:HB	1:A:592:MSE:HE2	1.48	0.96
1:B:510:VAL:HB	1:B:592:MSE:HE2	1.51	0.91
1:B:766:MSE:HE2	1:B:804:ARG:HD2	1.57	0.86
1:A:766:MSE:HE2	1:A:804:ARG:HD2	1.58	0.84
1:A:397:MSE:HE3	1:A:397:MSE:HA	1.57	0.84
1:A:94:SER:N	1:A:113:MSE:HE1	1.92	0.84
1:A:628:THR:HG22	1:A:630:THR:H	1.43	0.83
1:B:628:THR:HG22	1:B:630:THR:H	1.43	0.82
1:B:113:MSE:HE2	1:B:136:TYR:HD1	1.43	0.81
1:A:93:HIS:HB3	1:A:113:MSE:CE	2.11	0.80
1:B:36:ALA:HA	1:B:51:LEU:HD13	1.64	0.79
1:B:397:MSE:HE3	1:B:397:MSE:HA	1.63	0.79
1:A:428:SER:HB2	1:A:433:THR:OG1	1.83	0.78
1:B:708:THR:HG22	1:B:709:SER:N	1.98	0.77
1:A:113:MSE:HE3	1:A:114:CYS:H	1.50	0.77
1:A:61:PHE:O	1:A:139:GLU:HA	1.84	0.76
1:B:428:SER:HB2	1:B:433:THR:OG1	1.85	0.75
1:B:437:ILE:O	1:B:441:MSE:HG3	1.87	0.75
1:A:36:ALA:HA	1:A:51:LEU:HD13	1.67	0.75
1:A:67:SER:HB3	1:A:89:ASN:OD1	1.85	0.75
1:A:538:ARG:NH2	1:A:716:GLU:OE2	2.16	0.74
1:B:237:LEU:HD21	1:B:384:ARG:HG2	1.68	0.73
1:A:590:MSE:HE2	1:A:741:LEU:HD21	1.69	0.73
1:B:590:MSE:HE2	1:B:741:LEU:HD21	1.69	0.73
1:A:237:LEU:HD21	1:A:384:ARG:HG2	1.70	0.72
1:A:515:GLY:HA2	1:A:724:GLN:OE1	1.90	0.71
1:A:321:VAL:HG22	1:B:414:LEU:HD12	1.72	0.70
1:A:221:ARG:O	1:A:222:LEU:HB2	1.91	0.70
1:A:93:HIS:HB3	1:A:113:MSE:HE2	1.73	0.69
1:B:67:SER:HB3	1:B:89:ASN:OD1	1.91	0.69
1:B:659:THR:HG22	1:B:662:VAL:H	1.56	0.69

Continued on next page...

Continued from previous page...

Atom-1	Atom-2	Interatomic distance (Å)	Clash overlap (Å)
1:A:437:ILE:O	1:A:441:MSE:HG3	1.93	0.69
1:B:708:THR:CG2	1:B:709:SER:N	2.57	0.68
1:A:28:LYS:HE2	3:A:1809:SO4:O2	1.94	0.67
1:B:142:ILE:HD12	1:B:146:LEU:HB3	1.78	0.66
1:B:221:ARG:O	1:B:222:LEU:HB2	1.94	0.66
1:B:757:SER:O	1:B:759:TYR:N	2.28	0.66
1:B:42:GLN:HA	1:B:42:GLN:HE21	1.61	0.66
1:B:590:MSE:HE2	1:B:741:LEU:CD2	2.26	0.66
1:A:386:MSE:CE	1:A:686:MSE:HE1	2.24	0.66
1:A:103:GLY:O	1:A:104:LEU:C	2.34	0.65
1:B:333:HIS:O	1:B:336:THR:HG22	1.96	0.65
1:B:519:ILE:HD11	1:B:535:PHE:HZ	1.61	0.65
1:B:386:MSE:CE	1:B:686:MSE:HE1	2.26	0.65
1:A:659:THR:HG22	1:A:662:VAL:H	1.62	0.65
1:B:590:MSE:HA	1:B:590:MSE:HE3	1.79	0.65
1:A:590:MSE:HE2	1:A:741:LEU:CD2	2.27	0.65
1:A:686:MSE:C	1:A:686:MSE:HE3	2.18	0.64
1:A:590:MSE:HE3	1:A:590:MSE:HA	1.78	0.64
1:B:536:THR:HG23	1:B:537:SER:H	1.62	0.64
1:B:441:MSE:HE3	1:B:639:ILE:HG12	1.78	0.64
1:B:519:ILE:HD11	1:B:535:PHE:CZ	2.32	0.64
1:B:296:LEU:O	1:B:300:MSE:HG2	1.98	0.63
1:A:184:LEU:HD12	1:A:185:CYS:H	1.64	0.63
1:A:94:SER:H	1:A:113:MSE:HE1	1.61	0.63
1:A:386:MSE:HE2	1:A:686:MSE:HE1	1.80	0.63
1:A:369:TRP:HB2	1:B:397:MSE:HE1	1.80	0.63
1:B:764:LEU:HD22	1:B:774:THR:HG23	1.81	0.62
1:B:397:MSE:CE	1:B:397:MSE:HA	2.29	0.62
1:B:686:MSE:C	1:B:686:MSE:HE3	2.20	0.62
1:A:81:ARG:HH21	1:A:287:VAL:HG13	1.65	0.62
1:B:81:ARG:HH21	1:B:287:VAL:HG13	1.63	0.62
1:A:113:MSE:CE	1:A:114:CYS:H	2.13	0.62
1:A:699:LYS:NZ	4:A:2039:HOH:O	2.33	0.62
1:A:296:LEU:O	1:A:300:MSE:HG2	2.00	0.61
1:B:281:ASP:O	1:B:282:LEU:HB2	1.99	0.61
1:B:388:TYR:OH	1:B:392:ARG:NH1	2.33	0.61
1:A:397:MSE:HE2	1:A:399:PRO:HD2	1.82	0.61
1:A:397:MSE:CE	1:A:397:MSE:HA	2.29	0.61
1:B:397:MSE:HE2	1:B:399:PRO:HD2	1.82	0.61
1:A:510:VAL:HB	1:A:592:MSE:CE	2.27	0.61
1:B:225:ILE:HD13	1:B:257:PRO:HG2	1.82	0.60

Continued on next page...

Continued from previous page...

Atom-1	Atom-2	Interatomic distance (Å)	Clash overlap (Å)
1:B:184:LEU:HD12	1:B:185:CYS:H	1.66	0.60
1:A:50:LYS:HG2	1:A:129:GLU:HB3	1.82	0.60
1:B:474:HIS:O	1:B:480:ALA:HB1	2.02	0.60
1:A:497:TRP:CD2	1:B:501:ARG:HD2	2.36	0.60
1:B:441:MSE:CE	1:B:639:ILE:HG23	2.32	0.60
1:B:386:MSE:HE2	1:B:686:MSE:HE1	1.83	0.60
1:A:356:ASN:O	1:A:357:SER:O	2.20	0.59
1:B:31:VAL:O	1:B:35:ILE:HG12	2.03	0.59
1:B:50:LYS:HG2	1:B:129:GLU:HB3	1.84	0.59
1:A:31:VAL:O	1:A:35:ILE:HG12	2.02	0.59
1:B:584:ILE:HG21	1:B:590:MSE:HE1	1.83	0.58
1:A:396:VAL:HG13	1:B:340:ILE:HD12	1.85	0.58
1:B:42:GLN:HA	1:B:42:GLN:NE2	2.18	0.58
1:B:575:VAL:HG12	1:B:610:ILE:HD13	1.86	0.57
1:B:515:GLY:HA2	1:B:724:GLN:OE1	2.04	0.57
1:B:622:TRP:HE3	1:B:714:LEU:HD13	1.68	0.57
1:A:93:HIS:HB3	1:A:113:MSE:HE1	1.85	0.57
1:B:74:LEU:HD12	1:B:130:LEU:HD22	1.85	0.57
1:A:547:ASP:CG	1:A:599:ARG:HH11	2.07	0.57
1:A:74:LEU:HD12	1:A:130:LEU:HD22	1.87	0.57
1:A:764:LEU:HD22	1:A:774:THR:HG23	1.87	0.57
1:A:584:ILE:HG21	1:A:590:MSE:HE1	1.86	0.57
1:B:93:HIS:HB3	1:B:113:MSE:HE3	1.87	0.57
1:A:269:LEU:HD12	1:A:296:LEU:HD13	1.87	0.56
1:B:719:ASP:O	1:B:723:VAL:HG23	2.05	0.56
1:A:113:MSE:HE3	1:A:114:CYS:N	2.19	0.56
1:A:325:PRO:O	1:A:327:THR:HG23	2.06	0.56
1:B:142:ILE:HD12	1:B:146:LEU:CB	2.35	0.56
1:A:143:SER:OG	1:A:145:HIS:ND1	2.35	0.55
1:A:652:PRO:HG3	1:B:681:TYR:CB	2.36	0.55
1:B:74:LEU:CD1	1:B:130:LEU:HD22	2.36	0.55
1:B:60:GLY:HA2	1:B:139:GLU:O	2.06	0.55
1:B:547:ASP:CG	1:B:599:ARG:HH11	2.10	0.55
1:B:325:PRO:O	1:B:327:THR:HG23	2.06	0.55
1:B:6:SER:HB3	1:B:7:PRO:HD2	1.89	0.55
1:B:91:VAL:HG22	1:B:134:THR:HB	1.89	0.55
1:A:225:ILE:HD13	1:A:257:PRO:HG2	1.88	0.55
1:A:474:HIS:O	1:A:480:ALA:HB1	2.07	0.54
1:A:651:VAL:HG22	1:A:652:PRO:HD2	1.89	0.54
1:B:510:VAL:HB	1:B:592:MSE:CE	2.31	0.54
1:B:27:GLY:CA	3:B:1810:SO4:O4	2.55	0.54

Continued on next page...

Continued from previous page...

Atom-1	Atom-2	Interatomic distance (Å)	Clash overlap (Å)
1:B:446:PHE:CE1	1:B:450:HIS:HD2	2.25	0.54
1:B:61:PHE:CD1	1:B:62:PRO:HA	2.43	0.54
1:B:446:PHE:CE1	1:B:450:HIS:CD2	2.95	0.54
1:B:487:SER:HB2	1:B:488:PRO:HD2	1.89	0.54
1:B:222:LEU:C	1:B:224:GLY:H	2.11	0.54
1:B:644:LYS:NZ	2:B:1644:PLP:O3	2.39	0.54
1:B:487:SER:HB2	1:B:488:PRO:CD	2.38	0.54
1:A:547:ASP:OD2	1:A:599:ARG:NH1	2.41	0.54
1:A:74:LEU:CD1	1:A:130:LEU:HD22	2.37	0.54
1:A:91:VAL:HG22	1:A:134:THR:HB	1.90	0.54
1:A:443:PHE:CD1	1:A:464:VAL:HG11	2.43	0.54
1:A:681:TYR:CB	1:B:652:PRO:HG3	2.36	0.53
1:A:446:PHE:CE1	1:A:450:HIS:CD2	2.96	0.53
1:B:710:GLN:OE1	1:B:710:GLN:HA	2.08	0.53
1:A:317:LEU:HD21	1:B:411:GLU:OE2	2.08	0.53
1:A:388:TYR:OH	1:A:392:ARG:NH1	2.39	0.53
1:A:407:LEU:HD21	1:B:317:LEU:HD23	1.90	0.53
1:A:222:LEU:C	1:A:224:GLY:H	2.11	0.53
1:A:27:GLY:O	1:A:30:LEU:N	2.42	0.53
1:A:708:THR:N	1:A:713:THR:O	2.34	0.53
1:A:584:ILE:HG21	1:A:590:MSE:CE	2.39	0.53
1:B:269:LEU:HD12	1:B:296:LEU:HD13	1.89	0.53
1:B:559:LEU:HD21	1:B:601:LEU:HD12	1.90	0.53
1:B:547:ASP:OD2	1:B:599:ARG:NH1	2.42	0.53
1:A:644:LYS:NZ	2:A:1644:PLP:O3	2.39	0.52
1:A:746:LEU:HD13	1:A:759:TYR:HD1	1.74	0.52
1:A:71:PHE:CE1	1:A:87:ILE:HG13	2.44	0.52
1:A:335:GLU:HA	1:A:335:GLU:OE1	2.09	0.52
1:B:221:ARG:O	1:B:252:LEU:HD12	2.09	0.52
1:A:446:PHE:CE1	1:A:450:HIS:HD2	2.26	0.52
1:B:8:PHE:CD1	1:B:8:PHE:C	2.83	0.52
1:A:487:SER:HB2	1:A:488:PRO:HD2	1.91	0.52
1:B:27:GLY:O	1:B:30:LEU:N	2.41	0.52
1:A:321:VAL:HG22	1:B:414:LEU:CD1	2.40	0.52
1:A:397:MSE:HE1	1:B:369:TRP:HB2	1.91	0.52
1:B:237:LEU:O	1:B:237:LEU:HG	2.10	0.52
1:A:441:MSE:HE3	1:A:639:ILE:HG12	1.91	0.51
1:B:211:ARG:NH2	1:B:241:ASP:OD2	2.44	0.51
1:A:113:MSE:HE3	1:A:113:MSE:CA	2.40	0.51
1:A:221:ARG:O	1:A:222:LEU:CB	2.58	0.51
1:B:729:HIS:O	1:B:731:ALA:N	2.43	0.51

Continued on next page...

Continued from previous page...

Atom-1	Atom-2	Interatomic distance (Å)	Clash overlap (Å)
1:A:441:MSE:CE	1:A:639:ILE:HG23	2.40	0.51
1:A:184:LEU:HD12	1:A:185:CYS:N	2.25	0.51
1:B:538:ARG:NH1	1:B:737:VAL:O	2.41	0.51
1:A:575:VAL:HG12	1:A:610:ILE:HD13	1.93	0.51
1:A:221:ARG:O	1:A:252:LEU:HD12	2.11	0.51
1:A:211:ARG:NH2	1:A:241:ASP:OD2	2.43	0.51
1:A:348:PHE:CE1	1:B:396:VAL:HG22	2.46	0.51
1:A:487:SER:HB2	1:A:488:PRO:CD	2.40	0.51
1:B:443:PHE:CD1	1:B:464:VAL:HG11	2.46	0.50
1:B:367:ALA:HB1	1:B:372:GLN:HB2	1.94	0.50
1:B:546:ARG:HG2	1:B:596:LEU:HD22	1.93	0.50
1:B:584:ILE:HG21	1:B:590:MSE:CE	2.41	0.50
1:B:470:ARG:HG3	1:B:485:ALA:CB	2.42	0.50
1:B:556:SER:O	1:B:560:SER:HB2	2.11	0.50
1:A:680:SER:HA	1:B:369:TRP:CG	2.47	0.50
1:A:501:ARG:HD2	1:B:497:TRP:CD2	2.47	0.49
1:B:478:LEU:O	1:B:482:GLU:HG2	2.13	0.49
1:B:35:ILE:HD12	1:B:300:MSE:SE	2.63	0.49
1:A:724:GLN:OE1	1:A:724:GLN:HA	2.12	0.49
1:A:652:PRO:HG3	1:B:681:TYR:HB3	1.94	0.49
1:A:168:LEU:O	1:A:172:MSE:HG2	2.13	0.49
1:A:681:TYR:HB3	1:B:652:PRO:HG3	1.94	0.49
1:B:714:LEU:HD23	1:B:717:LEU:HD11	1.94	0.49
1:A:556:SER:O	1:A:560:SER:HB2	2.13	0.49
1:A:145:HIS:HB3	1:A:196:PRO:HB2	1.93	0.49
1:B:184:LEU:HD12	1:B:185:CYS:N	2.28	0.49
1:B:536:THR:HG23	1:B:537:SER:N	2.26	0.49
1:B:616:GLU:OE2	1:B:628:THR:HG23	2.12	0.49
1:B:622:TRP:CE3	1:B:714:LEU:HD13	2.47	0.48
1:B:622:TRP:CE3	1:B:714:LEU:CD1	2.96	0.48
1:B:746:LEU:HD13	1:B:759:TYR:HD1	1.77	0.48
1:B:221:ARG:O	1:B:222:LEU:CB	2.59	0.48
1:A:6:SER:HB3	1:A:7:PRO:HD2	1.96	0.48
1:B:61:PHE:CG	1:B:62:PRO:HA	2.48	0.48
1:B:9:HIS:CE1	1:B:360:SER:HB3	2.49	0.48
1:A:602:VAL:HG13	1:A:612:VAL:HG21	1.95	0.48
1:B:610:ILE:HD11	4:B:2020:HOH:O	2.12	0.48
1:A:546:ARG:HG2	1:A:596:LEU:HD22	1.96	0.48
1:A:113:MSE:HB3	1:A:113:MSE:HE2	1.60	0.48
1:A:94:SER:HA	1:A:137:ALA:O	2.14	0.48
1:A:466:VAL:HG22	1:A:467:ILE:N	2.28	0.48

Continued on next page...

Continued from previous page...

Atom-1	Atom-2	Interatomic distance (Å)	Clash overlap (Å)
1:A:61:PHE:CD1	1:A:62:PRO:HA	2.49	0.48
1:B:168:LEU:O	1:B:172:MSE:HG2	2.13	0.48
1:B:373:GLY:H	1:B:374:PRO:CD	2.27	0.48
1:B:382:LEU:HD13	1:B:650:MSE:HG3	1.95	0.48
1:B:659:THR:HG23	1:B:661:ALA:H	1.79	0.48
1:B:386:MSE:HE3	1:B:686:MSE:HE1	1.95	0.48
1:A:801:LEU:O	1:A:805:LEU:HB2	2.14	0.47
1:A:444:ARG:HG3	1:A:666:PHE:CZ	2.49	0.47
1:A:616:GLU:OE2	1:A:628:THR:HG23	2.14	0.47
1:A:113:MSE:HA	1:A:113:MSE:HE3	1.94	0.47
1:A:397:MSE:HE1	1:B:369:TRP:HE3	1.80	0.47
1:A:8:PHE:C	1:A:8:PHE:CD1	2.87	0.47
1:A:617:VAL:HG13	1:A:643:ALA:HB3	1.96	0.47
1:B:757:SER:N	1:B:779:ASN:OD1	2.47	0.47
1:B:764:LEU:CD2	1:B:774:THR:HG23	2.44	0.47
1:B:470:ARG:HG3	1:B:485:ALA:HB3	1.96	0.47
1:B:645:LEU:HB2	4:B:2024:HOH:O	2.14	0.47
1:B:18:LEU:HD23	1:B:187:VAL:HB	1.97	0.47
1:A:369:TRP:CG	1:B:680:SER:HA	2.50	0.47
1:B:708:THR:CG2	1:B:709:SER:H	2.27	0.47
1:B:94:SER:HA	1:B:137:ALA:O	2.15	0.47
1:B:519:ILE:HG12	1:B:535:PHE:HE2	1.79	0.46
1:B:801:LEU:O	1:B:805:LEU:HB2	2.15	0.46
1:A:222:LEU:C	1:A:224:GLY:N	2.67	0.46
1:A:333:HIS:O	1:A:336:THR:HG22	2.16	0.46
1:A:470:ARG:HG3	1:A:485:ALA:CB	2.44	0.46
1:A:477:THR:O	1:A:481[B]:MSE:HG3	2.15	0.46
1:A:373:GLY:H	1:A:374:PRO:CD	2.28	0.46
1:B:229:ILE:O	1:B:233:GLU:HG3	2.15	0.46
1:B:352:LYS:O	1:B:357:SER:HA	2.15	0.46
1:B:466:VAL:HG22	1:B:467:ILE:N	2.31	0.46
1:B:71:PHE:CE1	1:B:87:ILE:HG13	2.51	0.46
1:A:229:ILE:O	1:A:233:GLU:HG3	2.15	0.46
1:B:222:LEU:C	1:B:224:GLY:N	2.68	0.46
1:B:729:HIS:C	1:B:731:ALA:H	2.19	0.46
1:B:783:LEU:HD13	1:B:797:LEU:HB3	1.98	0.46
1:A:470:ARG:HG3	1:A:485:ALA:HB3	1.98	0.46
1:B:651:VAL:HG22	1:B:652:PRO:HD2	1.97	0.46
1:B:559:LEU:HD11	1:B:601:LEU:HB2	1.98	0.45
1:A:237:LEU:O	1:A:237:LEU:HG	2.16	0.45
1:A:262:LEU:HD13	1:A:266:VAL:HB	1.98	0.45

Continued on next page...

Continued from previous page...

Atom-1	Atom-2	Interatomic distance (Å)	Clash overlap (Å)
1:A:763:LEU:HA	1:A:763:LEU:HD23	1.77	0.45
1:B:636:LYS:HE2	1:B:636:LYS:HB2	1.73	0.45
1:A:14:HIS:HB2	1:A:172:MSE:CE	2.46	0.45
1:A:579:ILE:O	1:A:579:ILE:HG23	2.16	0.45
1:B:444:ARG:HG3	1:B:666:PHE:CZ	2.51	0.45
1:A:369:TRP:HE3	1:B:397:MSE:HE1	1.82	0.45
1:A:386:MSE:HE3	1:A:686:MSE:HE1	1.97	0.45
1:B:559:LEU:HD21	1:B:601:LEU:CD1	2.46	0.45
1:A:113:MSE:CE	1:A:114:CYS:N	2.79	0.45
1:A:352:LYS:O	1:A:357:SER:HA	2.17	0.45
1:A:11:PRO:HB2	1:A:172:MSE:HE2	1.98	0.45
1:A:508:PRO:HD2	1:A:597:PHE:CD2	2.52	0.45
1:A:649:GLY:O	1:B:395:HIS:HB3	2.16	0.45
1:B:145:HIS:HB3	1:B:196:PRO:HB2	1.98	0.45
1:B:602:VAL:HG13	1:B:612:VAL:HG21	1.99	0.45
1:B:96:LEU:CB	1:B:97:PRO:HD3	2.47	0.45
1:A:442:ALA:O	1:A:611:PRO:HG2	2.17	0.44
1:B:442:ALA:O	1:B:611:PRO:HG2	2.18	0.44
1:A:42:GLN:OE1	1:A:42:GLN:HA	2.16	0.44
1:A:478:LEU:O	1:A:482:GLU:HG2	2.17	0.44
1:B:236:LYS:HA	1:B:236:LYS:HD2	1.45	0.44
1:B:27:GLY:C	3:B:1810:SO4:O4	2.55	0.44
1:A:340:ILE:HD12	1:B:396:VAL:HG13	2.00	0.44
1:A:8:PHE:CZ	1:A:361:GLN:HG3	2.53	0.44
1:B:763:LEU:HD23	1:B:763:LEU:HA	1.76	0.44
1:B:26:LEU:HD13	1:B:218:GLY:O	2.17	0.44
1:A:466:VAL:HG23	1:A:577:ALA:O	2.17	0.44
1:B:14:HIS:HB2	1:B:172:MSE:CE	2.48	0.44
1:B:8:PHE:CZ	1:B:361:GLN:HG3	2.53	0.44
1:A:140:ALA:HB1	1:A:142:ILE:HD13	1.99	0.44
1:A:783:LEU:HD13	1:A:797:LEU:HB3	2.00	0.44
1:A:85:ILE:HA	1:A:127:ALA:HB1	2.00	0.43
1:B:11:PRO:HB2	1:B:172:MSE:HE2	1.99	0.43
1:A:438:ALA:HA	1:A:441:MSE:HE2	2.00	0.43
1:B:85:ILE:HA	1:B:127:ALA:HB1	1.99	0.43
1:A:24:THR:O	1:A:25:SER:HB2	2.19	0.43
1:A:269:LEU:CD1	1:A:296:LEU:HB2	2.49	0.43
1:B:281:ASP:O	1:B:282:LEU:CB	2.66	0.43
1:A:686:MSE:O	1:A:686:MSE:HE3	2.19	0.43
1:A:96:LEU:CB	1:A:97:PRO:HD3	2.49	0.43
1:A:315:ALA:HA	1:A:337:VAL:HG11	2.01	0.43

Continued on next page...

Continued from previous page...

Atom-1	Atom-2	Interatomic distance (Å)	Clash overlap (Å)
1:A:438:ALA:HB1	1:A:639:ILE:HG21	2.00	0.43
1:A:92:LEU:O	1:A:115:SER:HA	2.19	0.43
1:B:11:PRO:HG3	1:B:172:MSE:HG3	2.00	0.43
1:B:280:ASP:OD1	1:B:282:LEU:N	2.49	0.43
1:B:146:LEU:HD13	1:B:150:ARG:NH2	2.33	0.42
1:B:262:LEU:HD13	1:B:266:VAL:HB	2.01	0.42
1:B:277:ASP:HA	1:B:278:PRO:HD3	1.80	0.42
1:B:96:LEU:HD23	1:B:114:CYS:SG	2.59	0.42
1:A:430:ASN:HB2	2:A:1644:PLP:O3P	2.18	0.42
1:B:508:PRO:HD2	1:B:597:PHE:CD2	2.54	0.42
1:B:546:ARG:HH22	1:B:594:ASP:CG	2.22	0.42
1:A:11:PRO:HG3	1:A:172:MSE:HG3	2.01	0.42
1:A:367:ALA:HB1	1:A:372:GLN:HB2	2.00	0.42
1:A:546:ARG:O	1:A:549:SER:OG	2.29	0.42
1:B:24:THR:O	1:B:25:SER:HB2	2.18	0.42
1:B:580:ILE:HD11	1:B:614:PHE:CE1	2.54	0.42
1:A:27:GLY:O	1:A:30:LEU:HB2	2.19	0.42
1:B:221:ARG:O	1:B:252:LEU:CD1	2.67	0.42
1:B:73:LYS:CE	1:B:281:ASP:O	2.67	0.42
1:B:58:GLN:O	1:B:137:ALA:HA	2.19	0.42
1:B:430:ASN:HB2	2:B:1644:PLP:O3P	2.19	0.42
1:B:466:VAL:HG23	1:B:577:ALA:O	2.19	0.42
1:B:766:MSE:HE1	1:B:807:GLU:CB	2.50	0.42
1:A:722:LEU:O	1:A:726:ILE:HG13	2.20	0.42
1:B:13:ASN:OD1	1:B:172:MSE:HE3	2.19	0.42
1:B:34:GLY:HA3	1:B:293:PHE:CZ	2.55	0.42
1:B:519:ILE:CG1	1:B:535:PHE:CE2	3.02	0.42
1:A:433:THR:O	1:A:437:ILE:HD12	2.20	0.42
1:A:546:ARG:NH1	1:A:596:LEU:HB3	2.35	0.42
1:B:11:PRO:CG	1:B:172:MSE:HG3	2.50	0.42
1:B:659:THR:CG2	1:B:661:ALA:H	2.32	0.42
1:A:378:PHE:CE1	1:A:382:LEU:HG	2.55	0.41
1:B:27:GLY:O	1:B:30:LEU:HB2	2.20	0.41
1:B:208:ARG:N	1:B:209:PRO:CD	2.84	0.41
1:B:315:ALA:HA	1:B:337:VAL:HG11	2.02	0.41
1:B:396:VAL:HG12	1:B:403:TYR:CE1	2.55	0.41
1:B:397:MSE:HE2	1:B:398:PHE:H	1.85	0.41
1:B:41:LEU:O	1:B:42:GLN:NE2	2.47	0.41
1:B:438:ALA:HB1	1:B:639:ILE:HG21	2.02	0.41
1:B:670:SER:C	1:B:672:LEU:H	2.23	0.41
1:A:297:LYS:O	1:A:301:VAL:HG23	2.20	0.41

Continued on next page...

Continued from previous page...

Atom-1	Atom-2	Interatomic distance (Å)	Clash overlap (Å)
1:A:18:LEU:HD23	1:A:187:VAL:HB	2.03	0.41
1:A:414:LEU:HA	1:A:414:LEU:HD23	1.87	0.41
1:A:61:PHE:CG	1:A:62:PRO:HA	2.56	0.41
1:B:617:VAL:HG13	1:B:643:ALA:HB3	2.03	0.41
1:B:718:TRP:HB3	1:B:798:LEU:HD11	2.01	0.41
1:A:14:HIS:O	1:A:172:MSE:HE1	2.21	0.41
1:A:297:LYS:HE2	1:A:297:LYS:HB3	1.76	0.41
1:A:89:ASN:O	1:A:119:ARG:HA	2.21	0.41
1:A:277:ASP:HA	1:A:278:PRO:HD3	1.79	0.41
1:A:396:VAL:HG12	1:A:403:TYR:CE1	2.55	0.41
1:A:396:VAL:HG22	1:B:348:PHE:CE1	2.56	0.41
1:B:146:LEU:O	1:B:150:ARG:HG3	2.21	0.41
1:B:559:LEU:HD11	1:B:601:LEU:HA	2.02	0.41
1:B:579:ILE:O	1:B:579:ILE:HG23	2.19	0.41
1:B:26:LEU:HD23	1:B:26:LEU:HA	1.80	0.41
1:A:766:MSE:O	1:A:769:GLU:HB2	2.21	0.41
1:B:47:SER:C	1:B:49:THR:H	2.23	0.41
1:B:219:ASP:OD1	1:B:221:ARG:HB2	2.21	0.41
1:A:14:HIS:HB2	1:A:172:MSE:HE3	2.03	0.41
1:B:297:LYS:O	1:B:301:VAL:HG23	2.21	0.41
1:B:766:MSE:O	1:B:769:GLU:HB2	2.21	0.41
1:A:314:MSE:HE2	1:B:402:VAL:HG22	2.03	0.40
1:B:27:GLY:HA2	3:B:1810:SO4:O4	2.20	0.40
1:B:89:ASN:O	1:B:119:ARG:HA	2.21	0.40
1:A:669:ASP:OD1	1:B:330:LYS:HD3	2.21	0.40
1:B:519:ILE:HG22	1:B:520:SER:N	2.36	0.40
1:B:113:MSE:HE2	1:B:136:TYR:CD1	2.35	0.40
1:A:744:LEU:C	1:A:744:LEU:HD12	2.41	0.40
1:B:96:LEU:N	1:B:97:PRO:CD	2.85	0.40
1:A:35:ILE:HD12	1:A:300:MSE:SE	2.72	0.40
1:A:659:THR:HG23	1:A:661:ALA:H	1.86	0.40
1:B:93:HIS:CB	1:B:113:MSE:HE3	2.50	0.40
1:B:430:ASN:OD1	1:B:433:THR:HG23	2.22	0.40
1:B:441:MSE:CE	1:B:639:ILE:CG2	2.99	0.40
1:B:806:GLY:C	1:B:808:PHE:H	2.25	0.40

There are no symmetry-related clashes.

5.3 Torsion angles [i](#)

5.3.1 Protein backbone [i](#)

In the following table, the Percentiles column shows the percent Ramachandran outliers of the chain as a percentile score with respect to all X-ray entries followed by that with respect to entries of similar resolution.

The Analysed column shows the number of residues for which the backbone conformation was analysed, and the total number of residues.

Mol	Chain	Analysed	Favoured	Allowed	Outliers	Percentiles	
1	A	733/831 (88%)	669 (91%)	50 (7%)	14 (2%)	8	18
1	B	734/831 (88%)	672 (92%)	46 (6%)	16 (2%)	6	15
All	All	1467/1662 (88%)	1341 (91%)	96 (6%)	30 (2%)	7	17

All (30) Ramachandran outliers are listed below:

Mol	Chain	Res	Type
1	A	222	LEU
1	A	357	SER
1	B	222	LEU
1	B	357	SER
1	B	730	SER
1	B	758	LEU
1	A	355	ASP
1	A	644	LYS
1	B	355	ASP
1	B	644	LYS
1	A	104	LEU
1	A	451	ASN
1	A	643	ALA
1	B	451	ASN
1	B	643	ALA
1	A	397	MSE
1	A	738	ILE
1	B	397	MSE
1	B	491	GLY
1	B	48	ALA
1	B	447	CYS
1	A	28	LYS
1	A	373	GLY
1	A	447	CYS
1	B	583	VAL

Continued on next page...

Continued from previous page...

Mol	Chain	Res	Type
1	B	738	ILE
1	A	583	VAL
1	A	491	GLY
1	B	373	GLY
1	B	417	VAL

5.3.2 Protein sidechains [i](#)

In the following table, the Percentiles column shows the percent sidechain outliers of the chain as a percentile score with respect to all X-ray entries followed by that with respect to entries of similar resolution.

The Analysed column shows the number of residues for which the sidechain conformation was analysed, and the total number of residues.

Mol	Chain	Analysed	Rotameric	Outliers	Percentiles
1	A	575/688 (84%)	552 (96%)	23 (4%)	31 58
1	B	583/688 (85%)	556 (95%)	27 (5%)	27 52
All	All	1158/1376 (84%)	1108 (96%)	50 (4%)	29 55

All (50) residues with a non-rotameric sidechain are listed below:

Mol	Chain	Res	Type
1	A	51	LEU
1	A	96	LEU
1	A	113	MSE
1	A	115	SER
1	A	131	LEU
1	A	142	ILE
1	A	183	LEU
1	A	206	LEU
1	A	236	LYS
1	A	321	VAL
1	A	327	THR
1	A	369	TRP
1	A	396	VAL
1	A	397	MSE
1	A	417	VAL
1	A	428	SER
1	A	513	SER
1	A	659	THR

Continued on next page...

Continued from previous page...

Mol	Chain	Res	Type
1	A	667	SER
1	A	675	LEU
1	A	680	SER
1	A	686	MSE
1	A	790	SER
1	B	9	HIS
1	B	51	LEU
1	B	67	SER
1	B	96	LEU
1	B	131	LEU
1	B	183	LEU
1	B	206	LEU
1	B	236	LYS
1	B	302	LEU
1	B	321	VAL
1	B	327	THR
1	B	349	SER
1	B	356	ASN
1	B	369	TRP
1	B	396	VAL
1	B	397	MSE
1	B	417	VAL
1	B	428	SER
1	B	513	SER
1	B	624	LEU
1	B	659	THR
1	B	667	SER
1	B	675	LEU
1	B	680	SER
1	B	686	MSE
1	B	709	SER
1	B	790	SER

Some sidechains can be flipped to improve hydrogen bonding and reduce clashes. All (4) such sidechains are listed below:

Mol	Chain	Res	Type
1	A	450	HIS
1	B	450	HIS
1	B	484	GLN
1	B	574	HIS

5.3.3 RNA [i](#)

There are no RNA molecules in this entry.

5.4 Non-standard residues in protein, DNA, RNA chains [i](#)

There are no non-standard protein/DNA/RNA residues in this entry.

5.5 Carbohydrates [i](#)

There are no carbohydrates in this entry.

5.6 Ligand geometry [i](#)

6 ligands are modelled in this entry.

In the following table, the Counts columns list the number of bonds (or angles) for which Mogul statistics could be retrieved, the number of bonds (or angles) that are observed in the model and the number of bonds (or angles) that are defined in the Chemical Component Dictionary. The Link column lists molecule types, if any, to which the group is linked. The Z score for a bond length (or angle) is the number of standard deviations the observed value is removed from the expected value. A bond length (or angle) with $|Z| > 2$ is considered an outlier worth inspection. RMSZ is the root-mean-square of all Z scores of the bond lengths (or angles).

Mol	Type	Chain	Res	Link	Bond lengths			Bond angles		
					Counts	RMSZ	# Z > 2	Counts	RMSZ	# Z > 2
3	SO4	B	1809	-	4,4,4	0.25	0	6,6,6	0.18	0
3	SO4	A	1809	-	4,4,4	0.23	0	6,6,6	0.29	0
2	PLP	B	1644	1	15,15,16	1.85	3 (20%)	20,22,23	1.74	4 (20%)
3	SO4	A	1810	-	4,4,4	0.16	0	6,6,6	0.44	0
3	SO4	B	1810	-	4,4,4	0.25	0	6,6,6	0.28	0
2	PLP	A	1644	1	15,15,16	1.79	2 (13%)	20,22,23	1.84	5 (25%)

In the following table, the Chirals column lists the number of chiral outliers, the number of chiral centers analysed, the number of these observed in the model and the number defined in the Chemical Component Dictionary. Similar counts are reported in the Torsion and Rings columns. '-' means no outliers of that kind were identified.

Mol	Type	Chain	Res	Link	Chirals	Torsions	Rings
2	PLP	A	1644	1	-	5/6/6/8	0/1/1/1
2	PLP	B	1644	1	-	5/6/6/8	0/1/1/1

All (5) bond length outliers are listed below:

Mol	Chain	Res	Type	Atoms	Z	Observed(Å)	Ideal(Å)
2	A	1644	PLP	O3-C3	-5.62	1.23	1.37
2	B	1644	PLP	O3-C3	-5.39	1.24	1.37
2	B	1644	PLP	C2-N1	2.81	1.39	1.33
2	B	1644	PLP	C6-N1	2.38	1.39	1.34
2	A	1644	PLP	C2-N1	2.29	1.38	1.33

All (9) bond angle outliers are listed below:

Mol	Chain	Res	Type	Atoms	Z	Observed(°)	Ideal(°)
2	A	1644	PLP	O4P-C5A-C5	6.03	120.84	109.35
2	B	1644	PLP	O4P-C5A-C5	5.67	120.16	109.35
2	B	1644	PLP	C6-C5-C4	2.68	120.27	118.16
2	B	1644	PLP	O3P-P-O4P	-2.62	99.77	106.73
2	A	1644	PLP	C6-C5-C4	2.61	120.21	118.16
2	A	1644	PLP	O3P-P-O4P	-2.56	99.91	106.73
2	A	1644	PLP	C5-C6-N1	-2.32	119.95	123.82
2	A	1644	PLP	O3P-P-O2P	2.16	115.88	107.64
2	B	1644	PLP	O3P-P-O2P	2.11	115.69	107.64

There are no chirality outliers.

All (10) torsion outliers are listed below:

Mol	Chain	Res	Type	Atoms
2	B	1644	PLP	C4-C5-C5A-O4P
2	B	1644	PLP	C6-C5-C5A-O4P
2	B	1644	PLP	C5A-O4P-P-O3P
2	A	1644	PLP	C4-C5-C5A-O4P
2	A	1644	PLP	C6-C5-C5A-O4P
2	A	1644	PLP	C5A-O4P-P-O2P
2	A	1644	PLP	C5A-O4P-P-O3P
2	B	1644	PLP	C5A-O4P-P-O1P
2	A	1644	PLP	C5A-O4P-P-O1P
2	B	1644	PLP	C5A-O4P-P-O2P

There are no ring outliers.

4 monomers are involved in 8 short contacts:

Mol	Chain	Res	Type	Clashes	Symm-Clashes
3	A	1809	SO4	1	0
2	B	1644	PLP	2	0

Continued on next page...

Continued from previous page...

Mol	Chain	Res	Type	Clashes	Symm-Clashes
3	B	1810	SO4	3	0
2	A	1644	PLP	2	0

5.7 Other polymers [i](#)

There are no such residues in this entry.

5.8 Polymer linkage issues [i](#)

There are no chain breaks in this entry.

6 Fit of model and data

6.1 Protein, DNA and RNA chains

In the following table, the column labelled ‘#RSRZ > 2’ contains the number (and percentage) of RSRZ outliers, followed by percent RSRZ outliers for the chain as percentile scores relative to all X-ray entries and entries of similar resolution. The OWAB column contains the minimum, median, 95th percentile and maximum values of the occupancy-weighted average B-factor per residue. The column labelled ‘Q < 0.9’ lists the number of (and percentage) of residues with an average occupancy less than 0.9.

Mol	Chain	Analysed	<RSRZ>	#RSRZ > 2	OWAB(Å ²)	Q < 0.9
1	A	731/831 (87%)	-0.03	30 (4%) 37 36	28, 54, 95, 119	0
1	B	735/831 (88%)	-0.06	18 (2%) 59 60	27, 56, 89, 114	0
All	All	1466/1662 (88%)	-0.04	48 (3%) 46 47	27, 55, 92, 119	0

All (48) RSRZ outliers are listed below:

Mol	Chain	Res	Type	RSRZ
1	A	551	LEU	5.8
1	A	449	ASP	4.6
1	A	574	HIS	4.2
1	A	762	SER	4.2
1	A	512	LEU	4.1
1	A	759	TYR	3.9
1	B	79	LEU	3.8
1	B	448	VAL	3.8
1	A	547	ASP	3.5
1	A	450	HIS	3.5
1	A	493	LEU	3.5
1	A	552	ALA	3.4
1	A	448	VAL	3.3
1	A	521	LEU	3.2
1	B	805	LEU	3.2
1	A	555	TYR	3.1
1	B	746	LEU	2.9
1	A	758	LEU	2.8
1	A	605	CYS	2.7
1	A	669	ASP	2.6
1	B	279	SER	2.6
1	B	446	PHE	2.6
1	A	428	SER	2.5
1	A	604	GLU	2.5

Continued on next page...

Continued from previous page...

Mol	Chain	Res	Type	RSRZ
1	B	449	ASP	2.5
1	A	576	GLY	2.4
1	A	451	ASN	2.4
1	A	805	LEU	2.4
1	B	779	ASN	2.3
1	A	463	VAL	2.3
1	A	806	GLY	2.3
1	B	81	ARG	2.3
1	B	685	ALA	2.3
1	A	600	VAL	2.3
1	B	96	LEU	2.2
1	B	652	PRO	2.2
1	B	513	SER	2.2
1	A	746	LEU	2.1
1	B	688	CYS	2.1
1	B	101	SER	2.1
1	A	744	LEU	2.1
1	B	450	HIS	2.1
1	A	607	ASN	2.1
1	A	545	SER	2.1
1	B	49	THR	2.1
1	B	668	GLY	2.0
1	A	802	TYR	2.0
1	A	447	CYS	2.0

6.2 Non-standard residues in protein, DNA, RNA chains [i](#)

There are no non-standard protein/DNA/RNA residues in this entry.

6.3 Carbohydrates [i](#)

There are no carbohydrates in this entry.

6.4 Ligands [i](#)

In the following table, the Atoms column lists the number of modelled atoms in the group and the number defined in the chemical component dictionary. The B-factors column lists the minimum, median, 95th percentile and maximum values of B factors of atoms in the group. The column labelled 'Q< 0.9' lists the number of atoms with occupancy less than 0.9.

Mol	Type	Chain	Res	Atoms	RSCC	RSR	B-factors(\AA^2)	Q<0.9
3	SO4	B	1810	5/5	0.89	0.25	57,64,91,114	5
3	SO4	A	1809	5/5	0.93	0.22	48,57,85,89	5
3	SO4	B	1809	5/5	0.95	0.17	52,63,81,83	5
3	SO4	A	1810	5/5	0.96	0.21	31,34,44,57	5
2	PLP	B	1644	15/16	0.97	0.21	34,47,56,60	0
2	PLP	A	1644	15/16	0.98	0.20	44,48,58,61	0

6.5 Other polymers [i](#)

There are no such residues in this entry.