



wwPDB EM Validation Summary Report ⓘ

May 6, 2026 – 04:53 PM EDT

PDB ID : 11ZW / pdb_000011zw
EMDB ID : EMD-76233
Title : Structure of the Porcine deltacoronavirus (PDCoV) receptor-binding domain bound to the RBD minibinder 11, the PD3 Fab, and the Kappa light chain nanobody
Authors : Avery, N.G.; Park, Y.J.; Seattle Structural Genomics Center for Infectious Disease (SSGCID); Veessler, D.
Deposited on : 2026-03-21
Resolution : 2.80 Å(reported)
Based on initial model : .

This is a wwPDB EM Validation Summary Report for a publicly released PDB entry.

We welcome your comments at validation@mail.wwpdb.org

A user guide is available at

<https://www.wwpdb.org/validation/2017/EMValidationReportHelp>

with specific help available everywhere you see the ⓘ symbol.

The types of validation reports are described at

<http://www.wwpdb.org/validation/2017/FAQs#types>.

The following versions of software and data (see [references ⓘ](#)) were used in the production of this report:

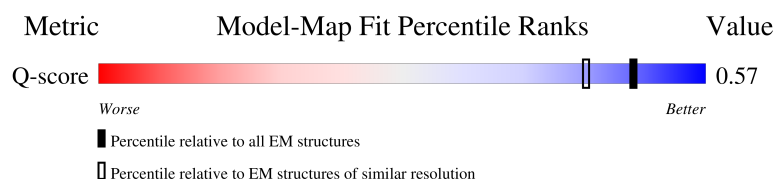
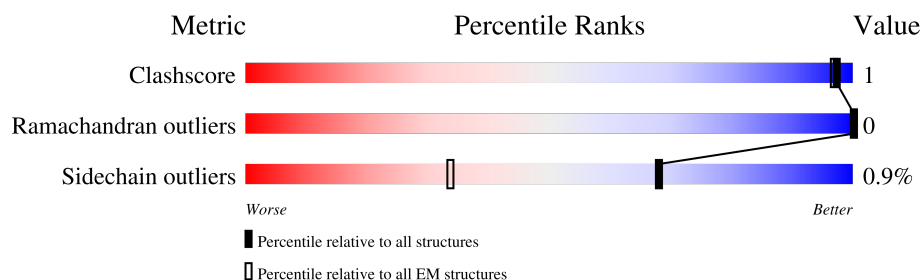
EMDB validation analysis : 0.0.1.dev132
Mogul : 2022.3.0, CSD as543be (2022)
MolProbity : 4-5-2 with Phenix2.0
Percentile statistics : 20250101.v01 (using entries in the PDB archive January 1st 2025)
EM percentile statistics : 202505.v01 (Using data in the EMDB archive up until May 2025)
MapQ : 1.9.13
Ideal geometry (proteins) : Engh & Huber (2001)
Ideal geometry (DNA, RNA) : Parkinson et al. (1996)
Validation Pipeline (wwPDB-VP) : 2.49

1 Overall quality at a glance

The following experimental techniques were used to determine the structure:
ELECTRON MICROSCOPY




The reported resolution of this entry is 2.80 Å.

Percentile scores (ranging between 0-100) for global validation metrics of the entry are shown in the following graphic. The table shows the number of entries on which the scores are based.







Metric	Whole archive (#Entries)	EM structures (#Entries)	Similar EM resolution (#Entries, resolution range(Å))
Clashscore	229148	23984	-
Ramachandran outliers	224038	23583	-
Sidechain outliers	223484	23102	-
Q-score	-	25397	11806 (2.30 - 3.30)

The table below summarises the geometric issues observed across the polymeric chains and their fit to the map. The red, orange, yellow and green segments of the bar indicate the fraction of residues that contain outliers for ≥ 3 , 2, 1 and 0 types of geometric quality criteria respectively. A grey segment represents the fraction of residues that are not modelled. The numeric value for each fraction is indicated below the corresponding segment, with a dot representing fractions $\leq 5\%$. The upper red bar (where present) indicates the fraction of residues that have poor fit to the EM map (all-atom inclusion $< 40\%$). The numeric value is given above the bar.

Mol	Chain	Length	Quality of chain
1	A	175	
2	B	176	
3	H	261	

Continued on next page...

Mol	Chain	Length	Quality of chain
4	L	238	
5	N	159	
6	C	5	
7	D	2	

2 Entry composition

There are 8 unique types of molecules in this entry. The entry contains 6116 atoms, of which 0 are hydrogens and 0 are deuteriums.

In the tables below, the AltConf column contains the number of residues with at least one atom in alternate conformation and the Trace column contains the number of residues modelled with at most 2 atoms.

- Molecule 1 is a protein called PDCoV IL121_2014 receptor binding domain.

Mol	Chain	Residues	Atoms					AltConf	Trace
1	A	113	Total	C	N	O	S	0	0
			862	541	143	168	10		

There are 33 discrepancies between the modelled and reference sequences:

Chain	Residue	Modelled	Actual	Comment	Reference
A	272	GLY	ARG	conflict	UNP F1NWE3
A	300	THR	SER	conflict	UNP F1NWE3
A	301	GLY	PRO	conflict	UNP F1NWE3
A	302	THR	PRO	conflict	UNP F1NWE3
A	417	GLY	-	linker	UNP W8Q9Y7
A	418	GLY	-	linker	UNP W8Q9Y7
A	419	SER	-	linker	UNP W8Q9Y7
A	420	GLY	-	insertion	UNP W8Q9Y7
A	421	LEU	-	insertion	UNP W8Q9Y7
A	422	ASN	-	insertion	UNP W8Q9Y7
A	423	ASP	-	insertion	UNP W8Q9Y7
A	424	ILE	-	insertion	UNP W8Q9Y7
A	425	PHE	-	insertion	UNP W8Q9Y7
A	426	GLU	-	insertion	UNP W8Q9Y7
A	427	ALA	-	insertion	UNP W8Q9Y7
A	428	GLN	-	insertion	UNP W8Q9Y7
A	429	LYS	-	insertion	UNP W8Q9Y7
A	430	ILE	-	insertion	UNP W8Q9Y7
A	431	GLU	-	insertion	UNP W8Q9Y7
A	432	TRP	-	insertion	UNP W8Q9Y7
A	433	HIS	-	insertion	UNP W8Q9Y7
A	434	GLU	-	insertion	UNP W8Q9Y7
A	435	GLY	-	linker	UNP W8Q9Y7
A	436	GLY	-	linker	UNP W8Q9Y7
A	437	SER	-	linker	UNP W8Q9Y7
A	438	HIS	-	expression tag	UNP W8Q9Y7
A	439	HIS	-	expression tag	UNP W8Q9Y7
A	440	HIS	-	expression tag	UNP W8Q9Y7

Continued on next page...

Continued from previous page...

Chain	Residue	Modelled	Actual	Comment	Reference
A	441	HIS	-	expression tag	UNP W8Q9Y7
A	442	HIS	-	expression tag	UNP W8Q9Y7
A	443	HIS	-	expression tag	UNP W8Q9Y7
A	444	HIS	-	expression tag	UNP W8Q9Y7
A	445	HIS	-	expression tag	UNP W8Q9Y7

- Molecule 2 is a protein called RBD minibinder 11.

Mol	Chain	Residues	Atoms					AltConf	Trace
2	B	120	Total	C	N	O	S	0	0
			884	589	144	146	5		

- Molecule 3 is a protein called PD3 Fab fragment heavy chain.

Mol	Chain	Residues	Atoms					AltConf	Trace
3	H	214	Total	C	N	O	S	0	0
			1584	1012	276	289	7		

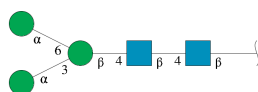
- Molecule 4 is a protein called PD3 Fab fragment light chain.

Mol	Chain	Residues	Atoms					AltConf	Trace
4	L	212	Total	C	N	O	S	0	0
			1599	1019	271	305	4		

- Molecule 5 is a protein called Kappa light chain nanobody.

Mol	Chain	Residues	Atoms					AltConf	Trace
5	N	118	Total	C	N	O	S	0	0
			882	552	157	169	4		

- Molecule 6 is an oligosaccharide called alpha-D-mannopyranose-(1-3)-[alpha-D-mannopyranose-(1-6)]beta-D-mannopyranose-(1-4)-2-acetamido-2-deoxy-beta-D-glucopyranose-(1-4)-2-acetamido-2-deoxy-beta-D-glucopyranose.



Mol	Chain	Residues	Atoms				AltConf	Trace
6	C	5	Total	C	N	O	0	0
			61	34	2	25		

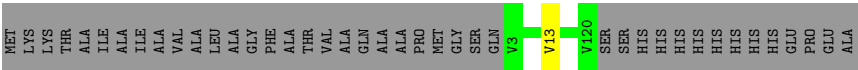
- Molecule 7 is an oligosaccharide called 2-acetamido-2-deoxy-beta-D-glucopyranose-(1-4)-2-acetamido-2-deoxy-beta-D-glucopyranose.



Mol	Chain	Residues	Atoms				AltConf	Trace
7	D	2	Total	C	N	O	0	0
			28	16	2	10		

- Molecule 8 is water.

Mol	Chain	Residues	Atoms		AltConf
8	A	34	Total	O	0
			34	34	
8	B	4	Total	O	0
			4	4	
8	H	62	Total	O	0
			62	62	
8	L	74	Total	O	0
			74	74	
8	N	42	Total	O	0
			42	42	



- Molecule 6: α -D-mannopyranose-(1-3)-[α -D-mannopyranose-(1-6)] β -D-mannopyranose-(1-4)-2-acetamido-2-deoxy- β -D-glucopyranose-(1-4)-2-acetamido-2-deoxy- β -D-glucopyranose



- Molecule 7: 2-acetamido-2-deoxy- β -D-glucopyranose-(1-4)-2-acetamido-2-deoxy- β -D-glucopyranose



4 Experimental information

Property	Value	Source
EM reconstruction method	SINGLE PARTICLE	Depositor
Imposed symmetry	POINT, Not provided	
Number of particles used	512440	Depositor
Resolution determination method	FSC 0.143 CUT-OFF	Depositor
CTF correction method	PHASE FLIPPING AND AMPLITUDE CORRECTION	Depositor
Microscope	TFS KRIOS	Depositor
Voltage (kV)	300	Depositor
Electron dose ($e^-/\text{\AA}^2$)	52.8	Depositor
Minimum defocus (nm)	500	Depositor
Maximum defocus (nm)	1500	Depositor
Magnification	105000	Depositor
Image detector	GATAN K3 BIOQUANTUM (6k x 4k)	Depositor
Maximum map value	1.176	Depositor
Minimum map value	-0.420	Depositor
Average map value	0.000	Depositor
Map value standard deviation	0.021	Depositor
Recommended contour level	0.27	Depositor
Map size (Å)	288.864, 288.864, 288.864	wwPDB
Map dimensions	288, 288, 288	wwPDB
Map angles (°)	90.0, 90.0, 90.0	wwPDB
Pixel spacing (Å)	1.003, 1.003, 1.003	Depositor

5 Model quality

5.1 Standard geometry

Bond lengths and bond angles in the following residue types are not validated in this section: MAN, NAG, BMA

The Z score for a bond length (or angle) is the number of standard deviations the observed value is removed from the expected value. A bond length (or angle) with $|Z| > 5$ is considered an outlier worth inspection. RMSZ is the root-mean-square of all Z scores of the bond lengths (or angles).

Mol	Chain	Bond lengths		Bond angles	
		RMSZ	$\# Z > 5$	RMSZ	$\# Z > 5$
1	A	0.30	0/877	0.62	0/1191
2	B	0.30	0/900	0.78	0/1219
3	H	0.33	0/1622	0.84	1/2211 (0.0%)
4	L	0.32	0/1636	0.77	0/2231
5	N	0.33	0/901	0.84	2/1221 (0.2%)
All	All	0.32	0/5936	0.78	3/8073 (0.0%)

Chiral center outliers are detected by calculating the chiral volume of a chiral center and verifying if the center is modelled as a planar moiety or with the opposite hand. A planarity outlier is detected by checking planarity of atoms in a peptide group, atoms in a mainchain group or atoms of a sidechain that are expected to be planar.

Mol	Chain	#Chirality outliers	#Planarity outliers
3	H	0	3
4	L	0	3
All	All	0	6

There are no bond length outliers.

All (3) bond angle outliers are listed below:

Mol	Chain	Res	Type	Atoms	Z	Observed(°)	Ideal(°)
3	H	18	LEU	CA-CB-CG	5.93	137.06	116.30
5	N	13	VAL	CA-C-N	5.59	129.18	120.68
5	N	13	VAL	C-N-CA	5.59	129.18	120.68

There are no chirality outliers.

5 of 6 planarity outliers are listed below:

Mol	Chain	Res	Type	Group
3	H	108	ASP	Sidechain
3	H	169	GLY	Mainchain
3	H	19	ARG	Sidechain
4	L	42	LYS	Mainchain
4	L	61	ARG	Sidechain

5.2 Too-close contacts ⓘ

In the following table, the Non-H and H(model) columns list the number of non-hydrogen atoms and hydrogen atoms in the chain respectively. The H(added) column lists the number of hydrogen atoms added and optimized by MolProbity. The Clashes column lists the number of clashes within the asymmetric unit, whereas Symm-Clashes lists symmetry-related clashes.

Mol	Chain	Non-H	H(model)	H(added)	Clashes	Symm-Clashes
1	A	862	0	804	1	0
2	B	884	0	807	1	0
3	H	1584	0	1500	0	0
4	L	1599	0	1527	5	0
5	N	882	0	802	0	0
6	C	61	0	52	0	0
7	D	28	0	25	0	0
8	A	34	0	0	0	0
8	B	4	0	0	0	0
8	H	62	0	0	0	0
8	L	74	0	0	1	0
8	N	42	0	0	0	0
All	All	6116	0	5517	7	0

The all-atom clashscore is defined as the number of clashes found per 1000 atoms (including hydrogen atoms). The all-atom clashscore for this structure is 1.

The worst 5 of 7 close contacts within the same asymmetric unit are listed below, sorted by their clash magnitude.

Atom-1	Atom-2	Interatomic distance (Å)	Clash overlap (Å)
1:A:352:CYS:SG	1:A:392:VAL:HG13	2.41	0.60
2:B:70:PHE:CZ	2:B:74:MET:HE2	2.48	0.47
4:L:13:ALA:HB3	4:L:78:LEU:HD11	1.97	0.47
4:L:38:GLN:HG3	4:L:42:LYS:O	2.16	0.45
4:L:48:ILE:HG22	4:L:50:THR:O	2.16	0.45

There are no symmetry-related clashes.

5.3 Torsion angles ⓘ

5.3.1 Protein backbone ⓘ

In the following table, the Percentiles column shows the percent Ramachandran outliers of the chain as a percentile score with respect to all PDB entries followed by that with respect to all EM entries.

The Analysed column shows the number of residues for which the backbone conformation was analysed, and the total number of residues.

Mol	Chain	Analysed	Favoured	Allowed	Outliers	Percentiles	
1	A	111/175 (63%)	105 (95%)	6 (5%)	0	100	100
2	B	116/176 (66%)	113 (97%)	3 (3%)	0	100	100
3	H	210/261 (80%)	205 (98%)	5 (2%)	0	100	100
4	L	210/238 (88%)	206 (98%)	4 (2%)	0	100	100
5	N	116/159 (73%)	115 (99%)	1 (1%)	0	100	100
All	All	763/1009 (76%)	744 (98%)	19 (2%)	0	100	100

There are no Ramachandran outliers to report.

5.3.2 Protein sidechains ⓘ

In the following table, the Percentiles column shows the percent sidechain outliers of the chain as a percentile score with respect to all PDB entries followed by that with respect to all EM entries.

The Analysed column shows the number of residues for which the sidechain conformation was analysed, and the total number of residues.

Mol	Chain	Analysed	Rotameric	Outliers	Percentiles	
1	A	94/151 (62%)	92 (98%)	2 (2%)	47	79
2	B	74/161 (46%)	73 (99%)	1 (1%)	59	85
3	H	157/216 (73%)	157 (100%)	0	100	100
4	L	167/208 (80%)	165 (99%)	2 (1%)	63	87
5	N	83/123 (68%)	83 (100%)	0	100	100
All	All	575/859 (67%)	570 (99%)	5 (1%)	68	89

All (5) residues with a non-rotameric sidechain are listed below:

Mol	Chain	Res	Type
1	A	352	CYS
1	A	392	VAL
2	B	30	LYS
4	L	94	TYR
4	L	161	GLU

Sometimes sidechains can be flipped to improve hydrogen bonding and reduce clashes. All (5) such sidechains are listed below:

Mol	Chain	Res	Type
1	A	315	HIS
2	B	15	HIS
4	L	55	GLN
4	L	92	ASN
5	N	117	GLN

5.3.3 RNA ⓘ

There are no RNA molecules in this entry.

5.4 Non-standard residues in protein, DNA, RNA chains ⓘ

There are no non-standard protein/DNA/RNA residues in this entry.

5.5 Carbohydrates ⓘ

7 monosaccharides are modelled in this entry.

In the following table, the Counts columns list the number of bonds (or angles) for which Mogul statistics could be retrieved, the number of bonds (or angles) that are observed in the model and the number of bonds (or angles) that are defined in the Chemical Component Dictionary. The Link column lists molecule types, if any, to which the group is linked. The Z score for a bond length (or angle) is the number of standard deviations the observed value is removed from the expected value. A bond length (or angle) with $|Z| > 2$ is considered an outlier worth inspection. RMSZ is the root-mean-square of all Z scores of the bond lengths (or angles).

Mol	Type	Chain	Res	Link	Bond lengths			Bond angles		
					Counts	RMSZ	$\# Z > 2$	Counts	RMSZ	$\# Z > 2$
6	NAG	C	1	6,1	14,14,15	0.73	0	17,19,21	0.83	0
6	NAG	C	2	6	14,14,15	0.73	0	17,19,21	0.98	1 (5%)
6	BMA	C	3	6	11,11,12	0.83	0	15,15,17	1.32	2 (13%)
6	MAN	C	4	6	11,11,12	0.64	0	15,15,17	1.60	1 (6%)

Mol	Type	Chain	Res	Link	Bond lengths			Bond angles		
					Counts	RMSZ	# Z > 2	Counts	RMSZ	# Z > 2
6	MAN	C	5	6	11,11,12	0.67	0	15,15,17	1.36	1 (6%)
7	NAG	D	1	1,7	14,14,15	0.68	0	17,19,21	0.78	0
7	NAG	D	2	7	14,14,15	0.67	0	17,19,21	1.03	1 (5%)

In the following table, the Chirals column lists the number of chiral outliers, the number of chiral centers analysed, the number of these observed in the model and the number defined in the Chemical Component Dictionary. Similar counts are reported in the Torsion and Rings columns. '-' means no outliers of that kind were identified.

Mol	Type	Chain	Res	Link	Chirals	Torsions	Rings
6	NAG	C	1	6,1	-	0/6/23/26	0/1/1/1
6	NAG	C	2	6	-	0/6/23/26	0/1/1/1
6	BMA	C	3	6	-	0/2/19/22	0/1/1/1
6	MAN	C	4	6	-	1/2/19/22	0/1/1/1
6	MAN	C	5	6	-	1/2/19/22	0/1/1/1
7	NAG	D	1	1,7	-	0/6/23/26	0/1/1/1
7	NAG	D	2	7	-	0/6/23/26	0/1/1/1

There are no bond length outliers.

The worst 5 of 6 bond angle outliers are listed below:

Mol	Chain	Res	Type	Atoms	Z	Observed(°)	Ideal(°)
6	C	4	MAN	C1-O5-C5	5.16	119.11	112.19
6	C	5	MAN	C1-O5-C5	4.03	117.59	112.19
6	C	3	BMA	C1-O5-C5	3.91	117.43	112.19
7	D	2	NAG	C1-O5-C5	3.11	116.35	112.19
6	C	2	NAG	C1-O5-C5	3.03	116.25	112.19

There are no chirality outliers.

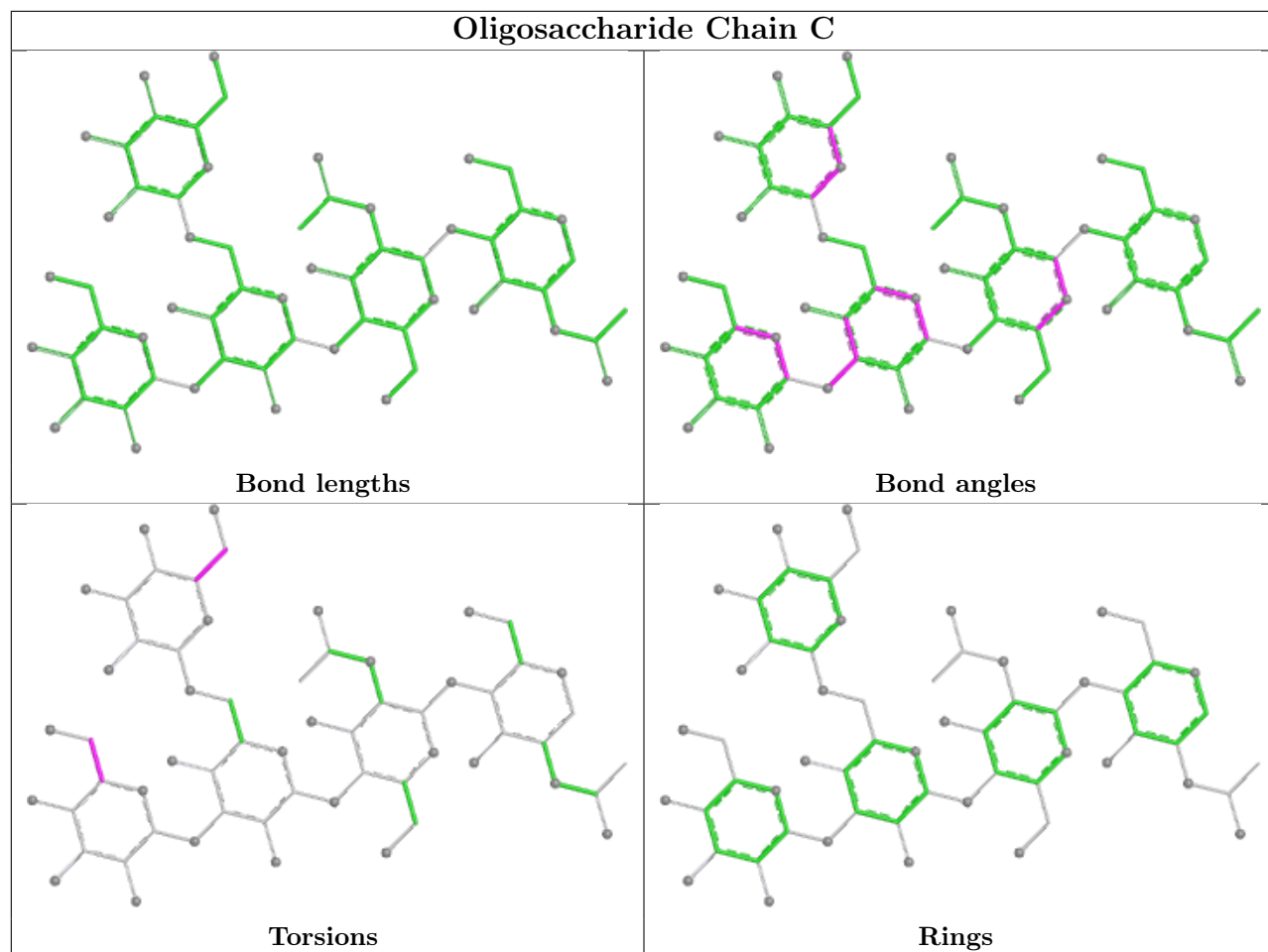
All (2) torsion outliers are listed below:

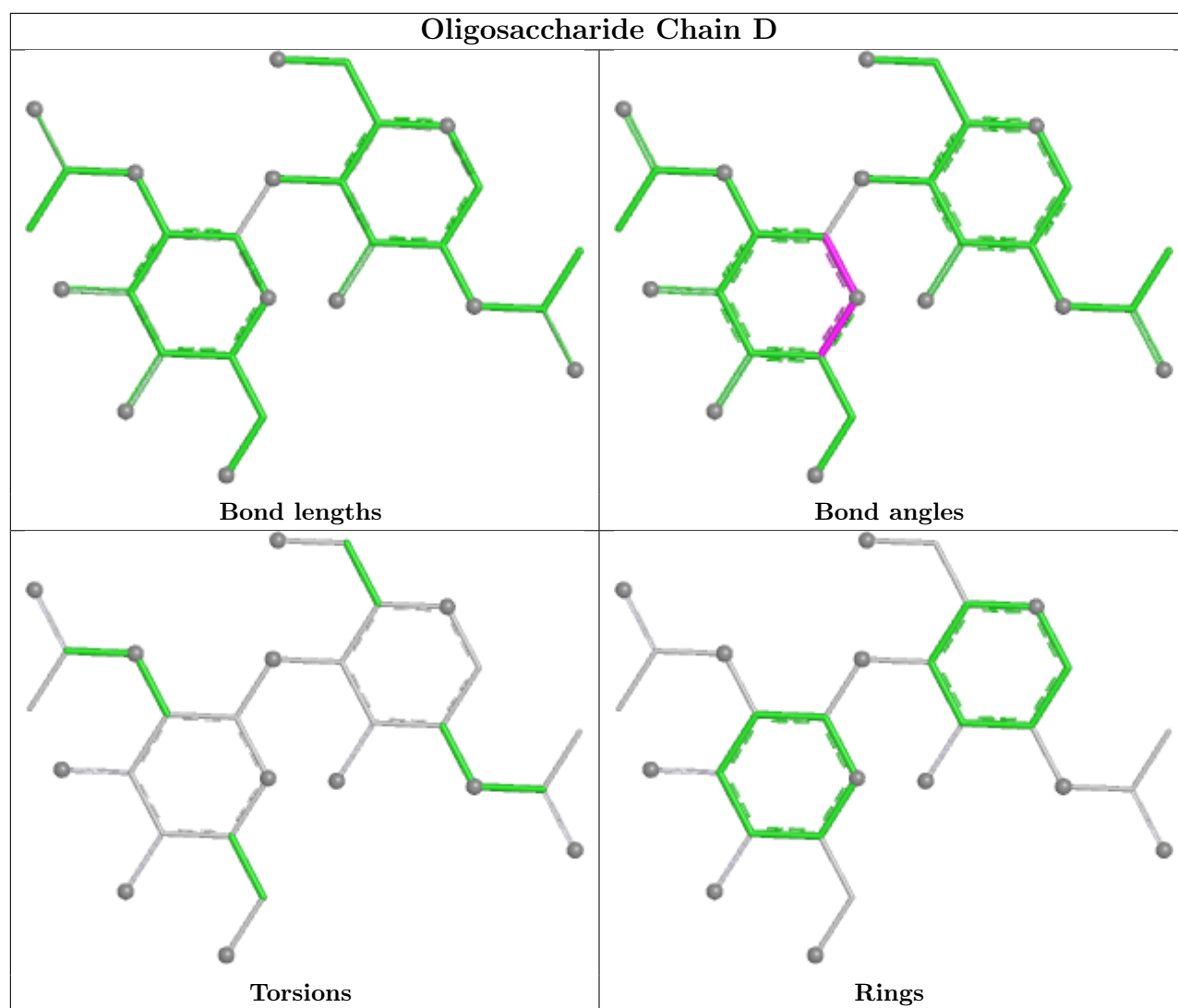
Mol	Chain	Res	Type	Atoms
6	C	4	MAN	O5-C5-C6-O6
6	C	5	MAN	O5-C5-C6-O6

There are no ring outliers.

No monomer is involved in short contacts.

The following is a two-dimensional graphical depiction of Mogul quality analysis of bond lengths, bond angles, torsion angles, and ring geometry for oligosaccharide.





5.6 Ligand geometry [i](#)

There are no ligands in this entry.

5.7 Other polymers [i](#)

There are no such residues in this entry.

5.8 Polymer linkage issues [i](#)

There are no chain breaks in this entry.

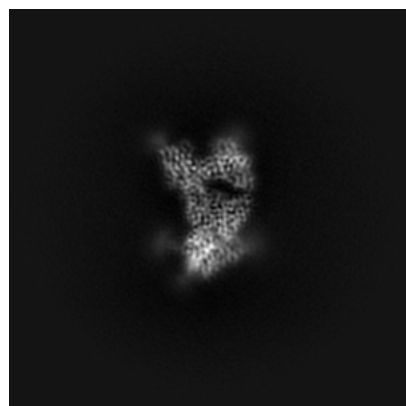
6 Map visualisation [i](#)

This section contains visualisations of the EMDB entry EMD-76233. These allow visual inspection of the internal detail of the map and identification of artifacts.

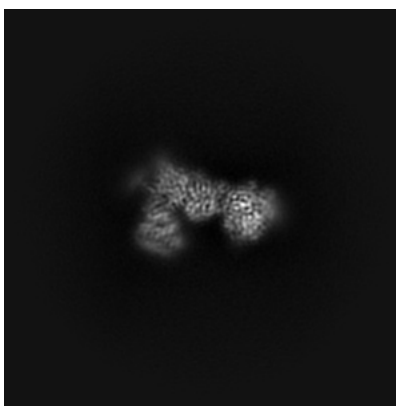
Images derived from a raw map, generated by summing the deposited half-maps, are presented below the corresponding image components of the primary map to allow further visual inspection and comparison with those of the primary map.

6.1 Orthogonal projections [i](#)

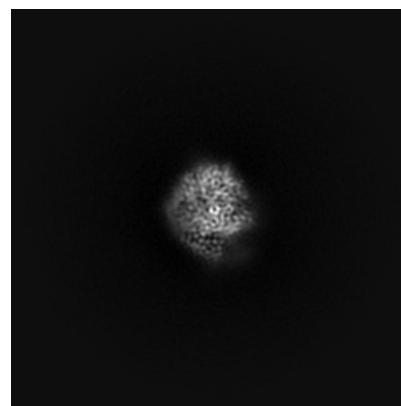
6.1.1 Primary map



X

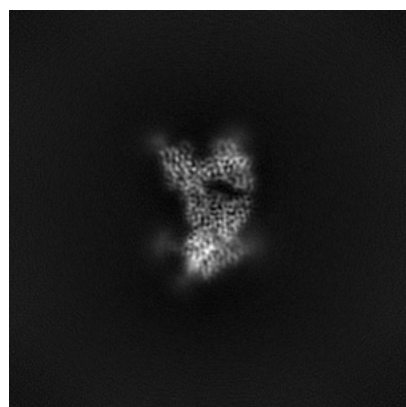


Y

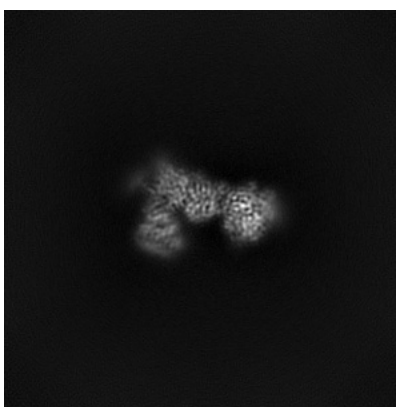


Z

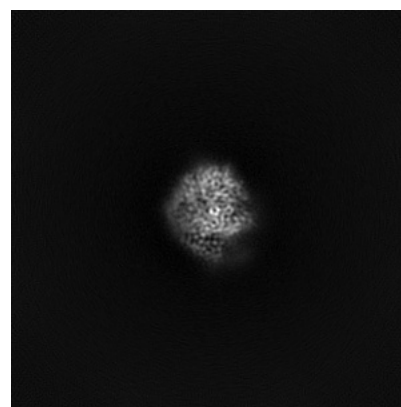
6.1.2 Raw map



X



Y

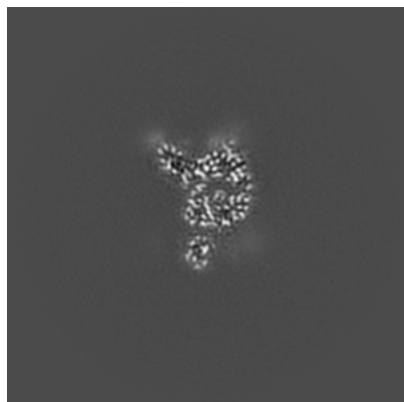


Z

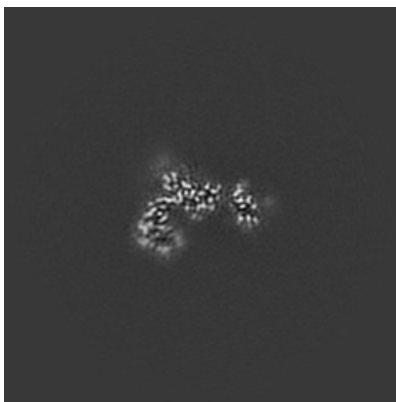
The images above show the map projected in three orthogonal directions.

6.2 Central slices [i](#)

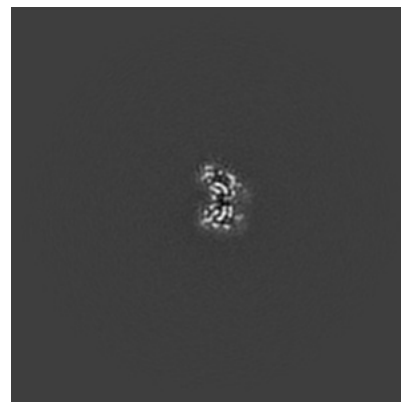
6.2.1 Primary map



X Index: 144

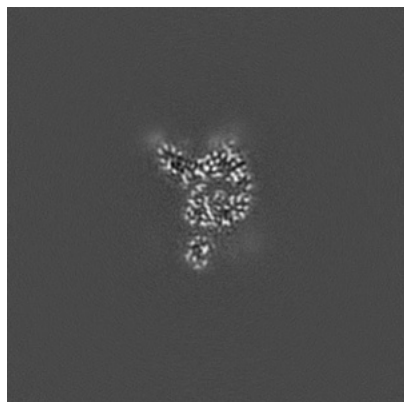


Y Index: 144

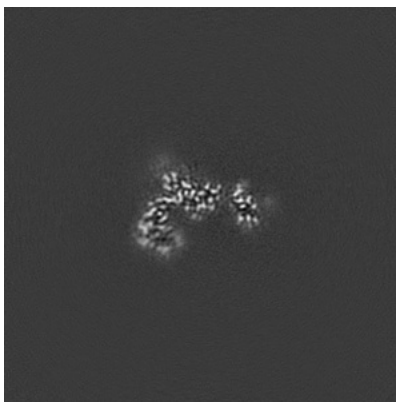


Z Index: 144

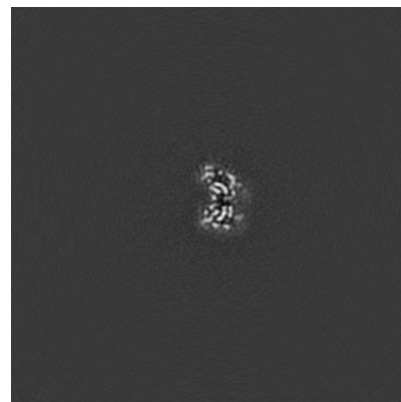
6.2.2 Raw map



X Index: 144



Y Index: 144



Z Index: 144

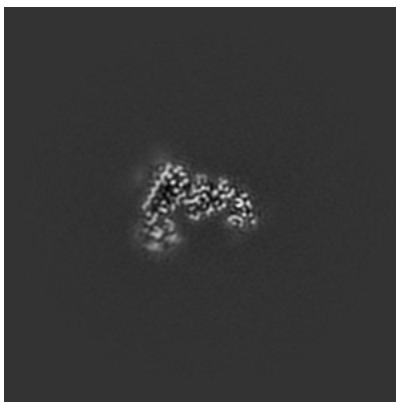
The images above show central slices of the map in three orthogonal directions.

6.3 Largest variance slices [i](#)

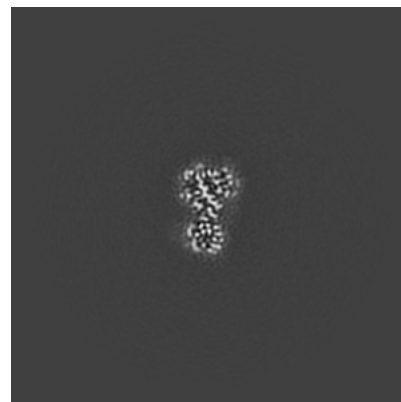
6.3.1 Primary map



X Index: 148

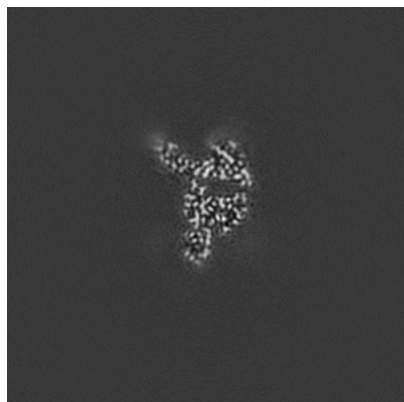


Y Index: 137

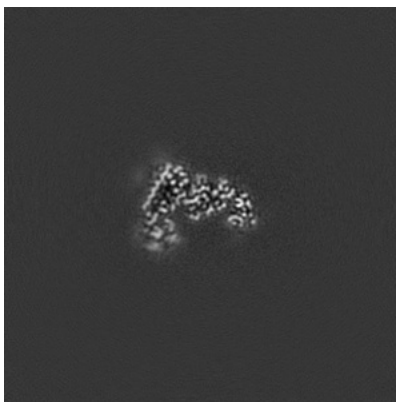


Z Index: 176

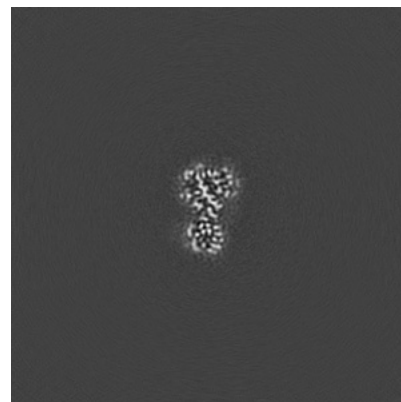
6.3.2 Raw map



X Index: 148



Y Index: 137



Z Index: 176

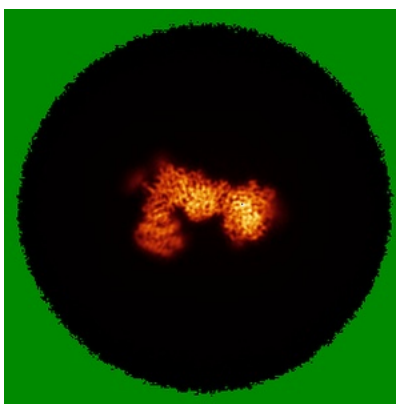
The images above show the largest variance slices of the map in three orthogonal directions.

6.4 Orthogonal standard-deviation projections (False-color) [i](#)

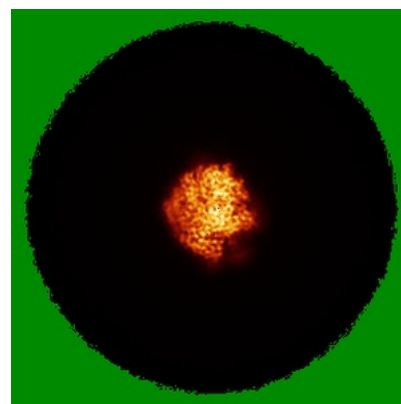
6.4.1 Primary map



X

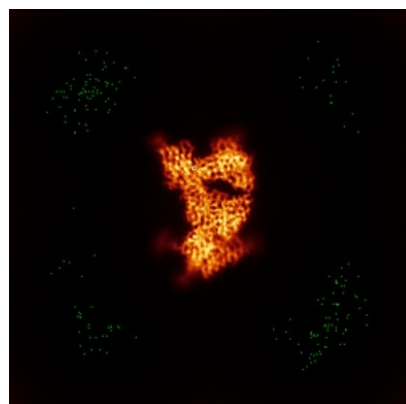


Y

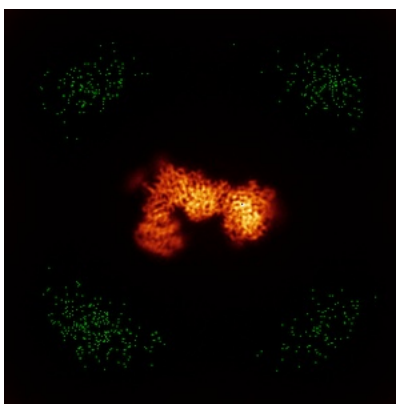


Z

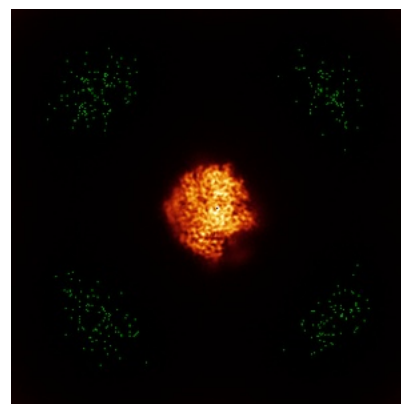
6.4.2 Raw map



X



Y

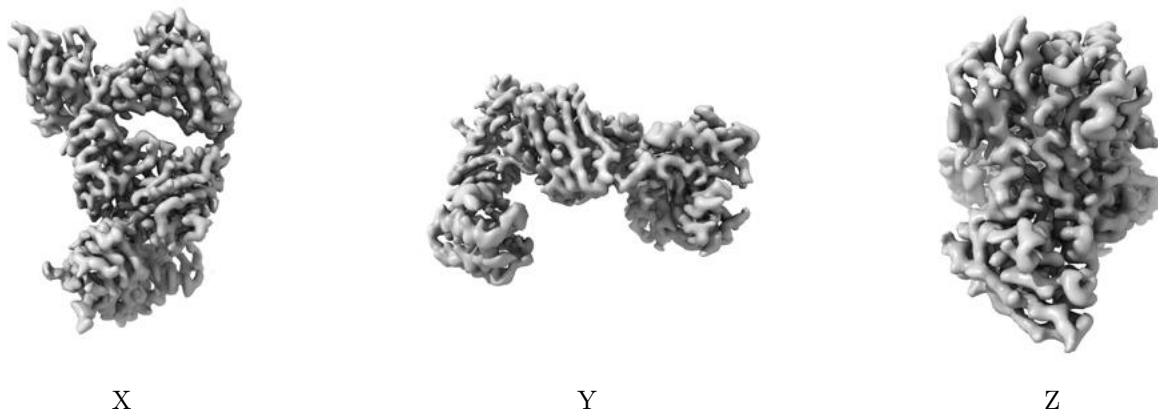


Z

The images above show the map standard deviation projections with false color in three orthogonal directions. Minimum values are shown in green, max in blue, and dark to light orange shades represent small to large values respectively.

6.5 Orthogonal surface views [i](#)

6.5.1 Primary map



The images above show the 3D surface view of the map at the recommended contour level 0.27. These images, in conjunction with the slice images, may facilitate assessment of whether an appropriate contour level has been provided.

6.5.2 Raw map



These images show the 3D surface of the raw map. The raw map's contour level was selected so that its surface encloses the same volume as the primary map does at its recommended contour level.

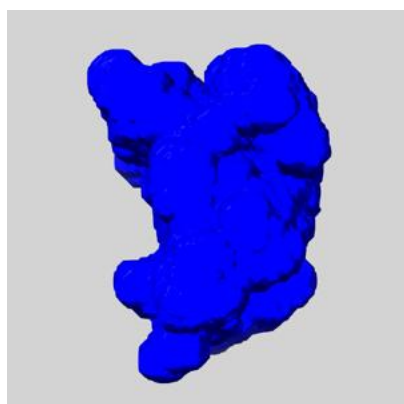
6.6 Mask visualisation [i](#)

This section shows the 3D surface view of the primary map at 50% transparency overlaid with the specified mask at 0% transparency

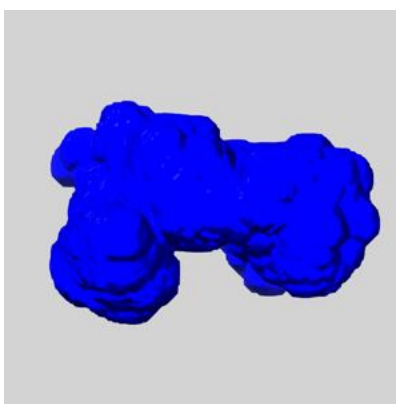
A mask typically either:

- Encompasses the whole structure
- Separates out a domain, a functional unit, a monomer or an area of interest from a larger structure

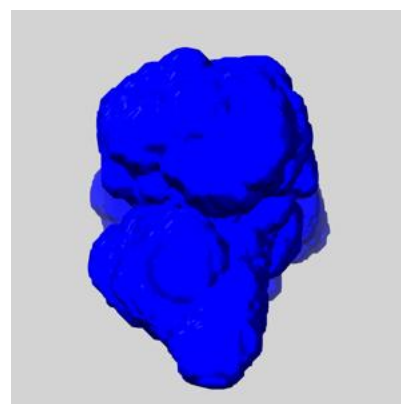
6.6.1 emd_76233_msk_2.map [i](#)



X

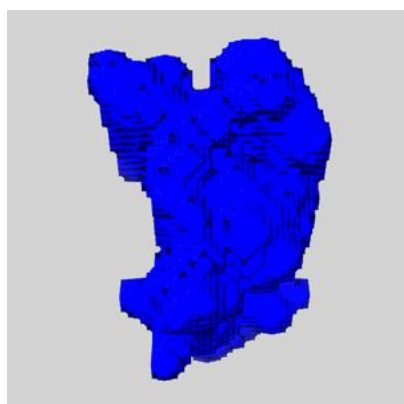


Y

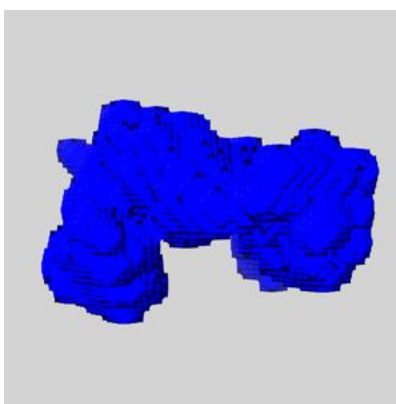


Z

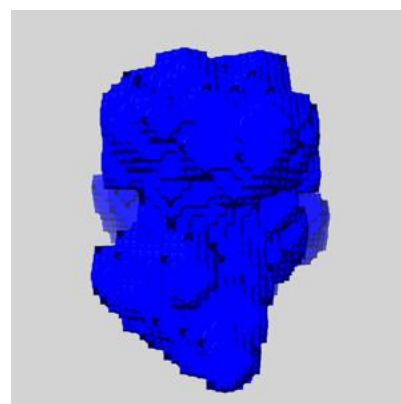
6.6.2 emd_76233_msk_1.map [i](#)



X



Y

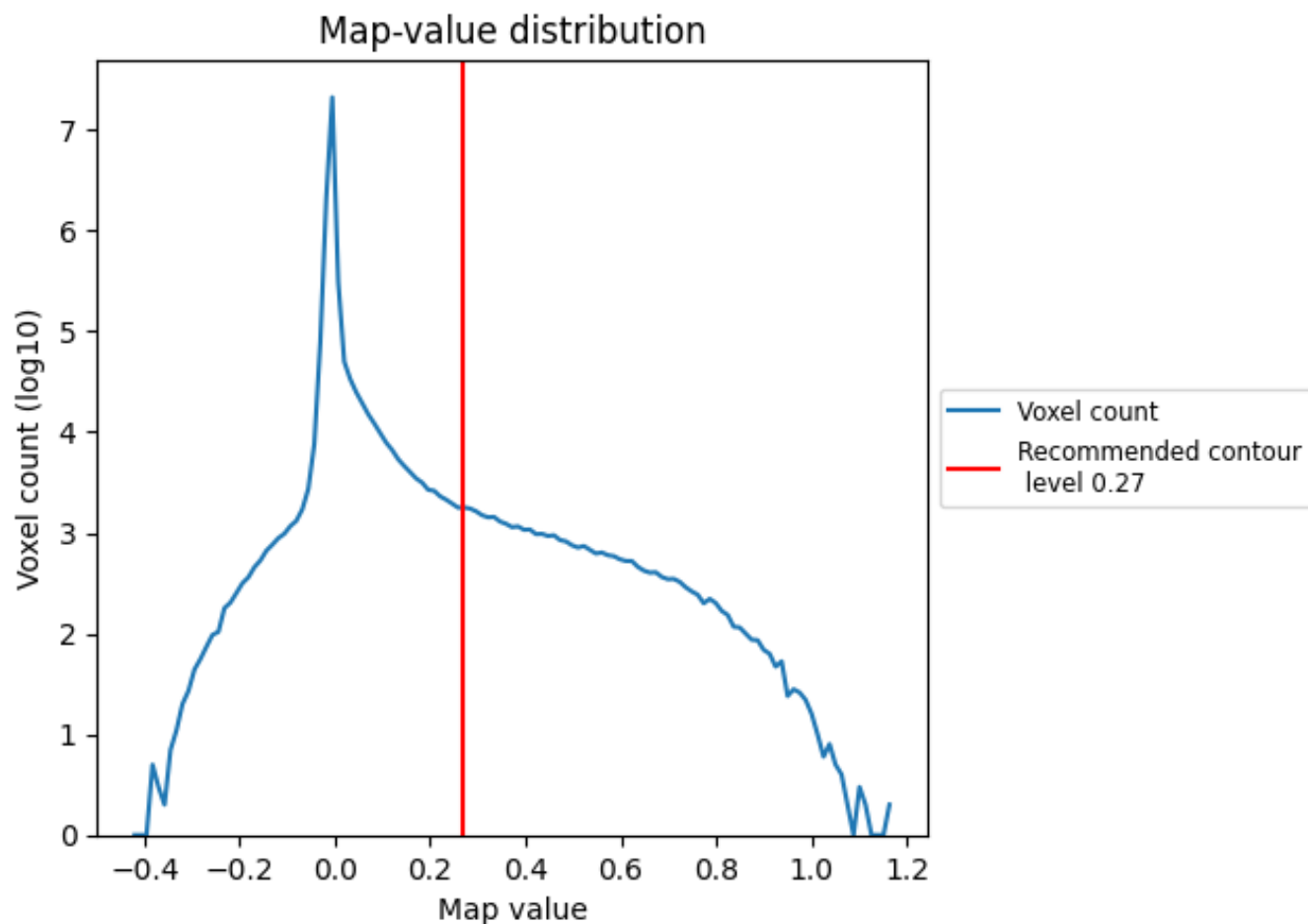


Z

7 Map analysis [i](#)

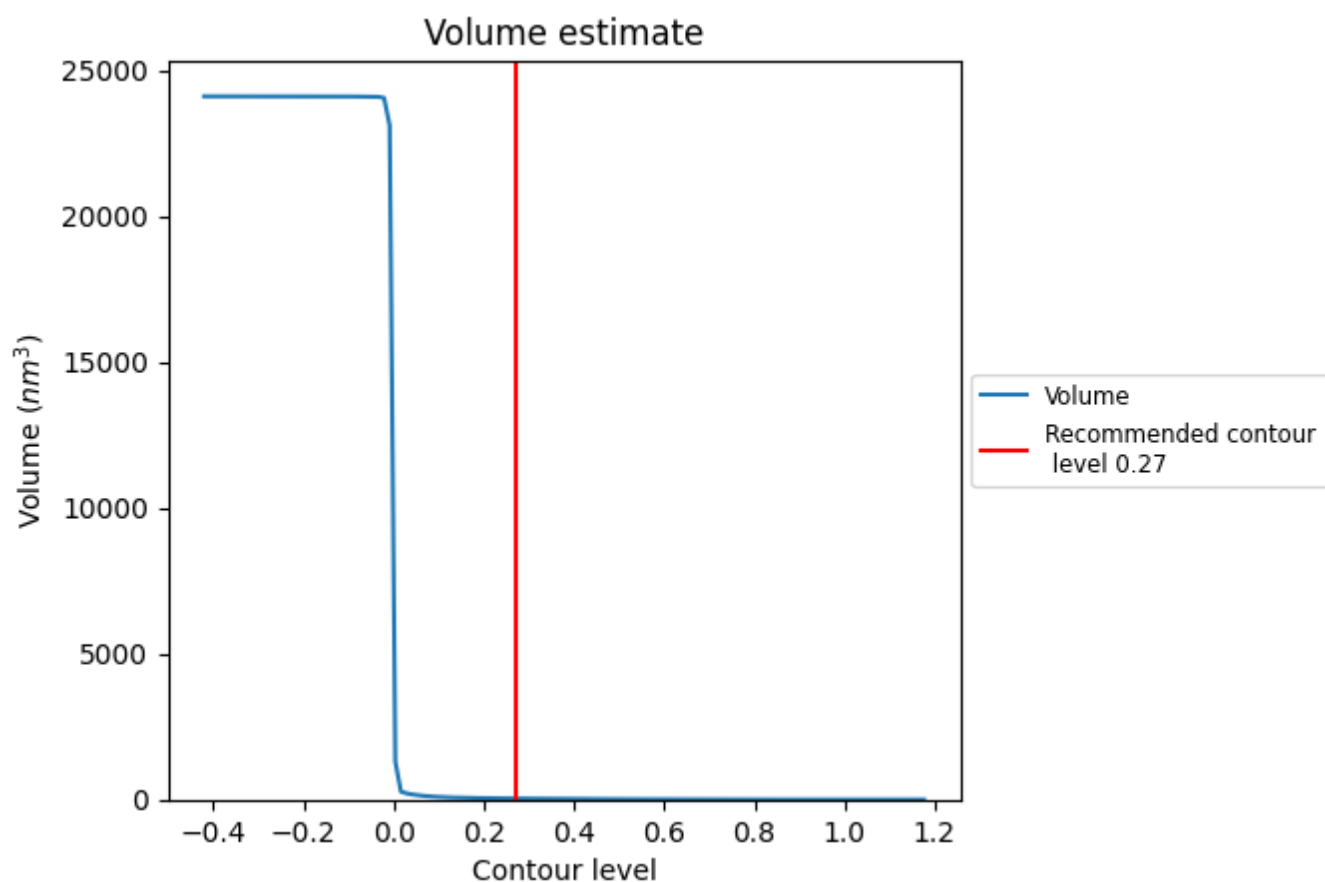
This section contains the results of statistical analysis of the map.

7.1 Map-value distribution [i](#)



The map-value distribution is plotted in 128 intervals along the x-axis. The y-axis is logarithmic. A spike in this graph at zero usually indicates that the volume has been masked.

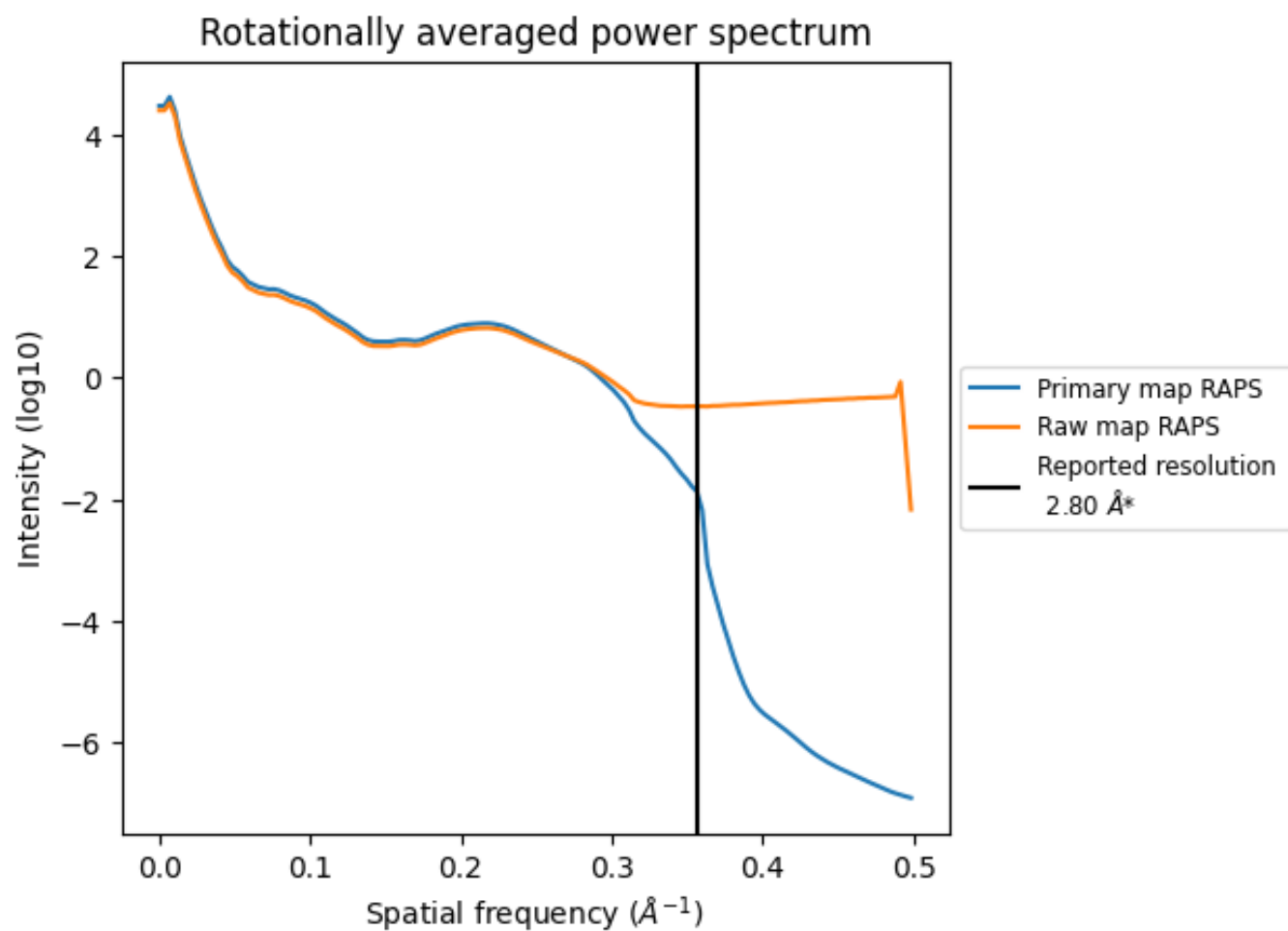
7.2 Volume estimate [i](#)



The volume at the recommended contour level is 35 nm³; this corresponds to an approximate mass of 32 kDa.

The volume estimate graph shows how the enclosed volume varies with the contour level. The recommended contour level is shown as a vertical line and the intersection between the line and the curve gives the volume of the enclosed surface at the given level.

7.3 Rotationally averaged power spectrum ⓘ

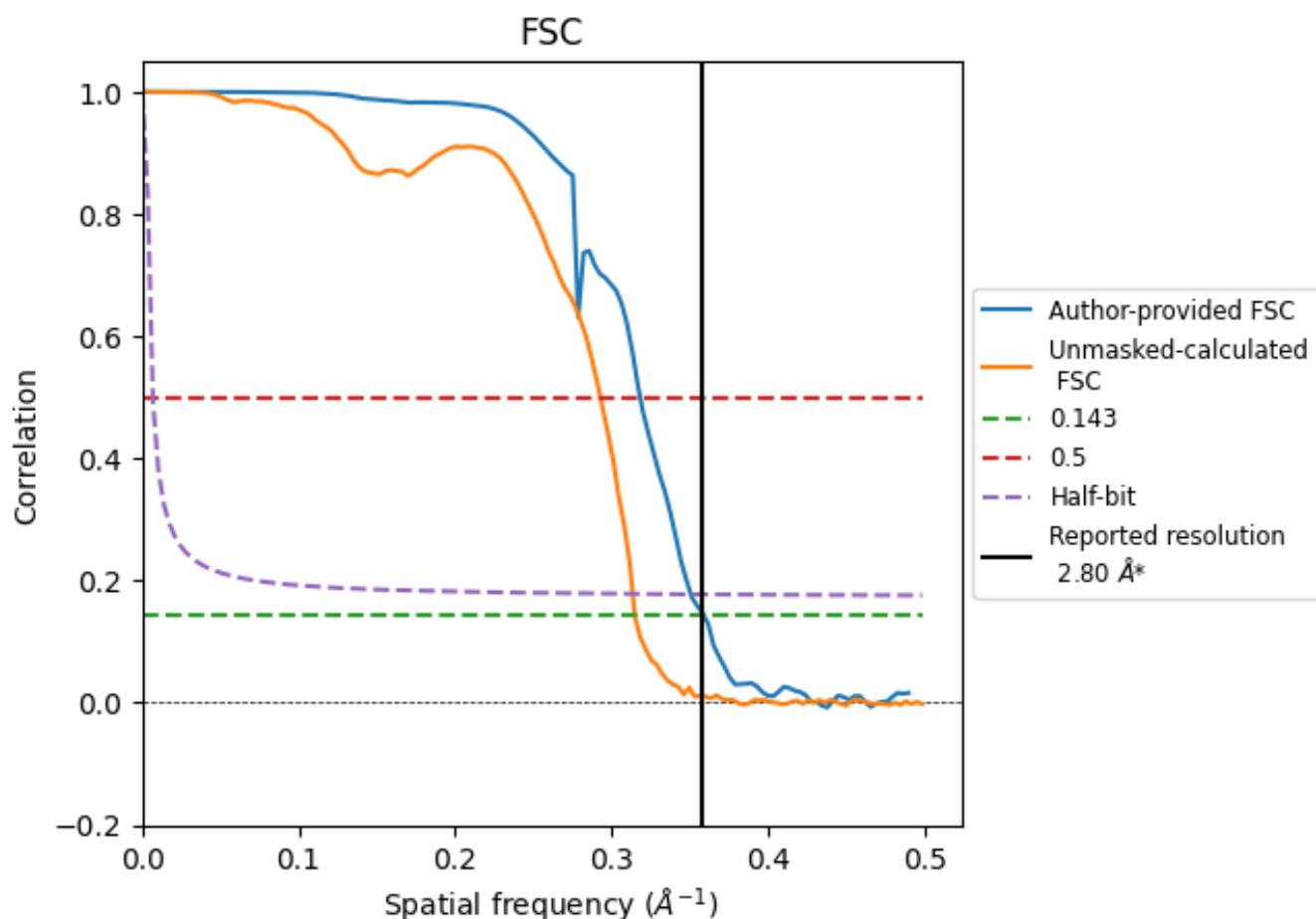


*Reported resolution corresponds to spatial frequency of 0.357 \AA^{-1}

8 Fourier-Shell correlation [i](#)

Fourier-Shell Correlation (FSC) is the most commonly used method to estimate the resolution of single-particle and subtomogram-averaged maps. The shape of the curve depends on the imposed symmetry, mask and whether or not the two 3D reconstructions used were processed from a common reference. The reported resolution is shown as a black line. A curve is displayed for the half-bit criterion in addition to lines showing the 0.143 gold standard cut-off and 0.5 cut-off.

8.1 FSC [i](#)



*Reported resolution corresponds to spatial frequency of 0.357 \AA^{-1}

8.2 Resolution estimates [i](#)

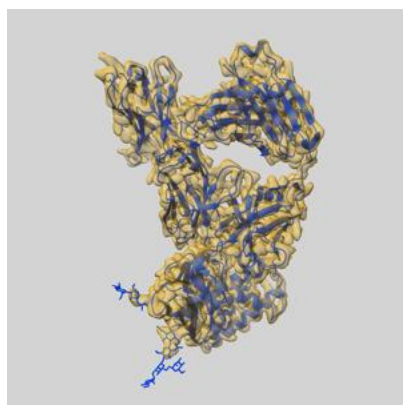
Resolution estimate (Å)	Estimation criterion (FSC cut-off)		
	0.143	0.5	Half-bit
Reported by author	2.80	-	-
Author-provided FSC curve	2.79	3.14	2.85
Unmasked-calculated*	3.18	3.42	3.19

*Resolution estimate based on FSC curve calculated by comparison of deposited half-maps. The value from deposited half-maps intersecting FSC 0.143 CUT-OFF 3.18 differs from the reported value 2.8 by more than 10 %

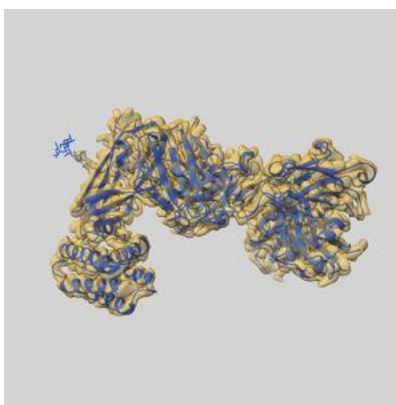
9 Map-model fit [i](#)

This section contains information regarding the fit between EMDB map EMD-76233 and PDB model 11ZW. Per-residue inclusion information can be found in section [3](#) on page [7](#).

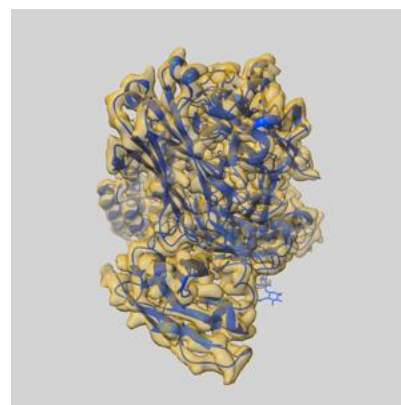
9.1 Map-model overlay [i](#)



X



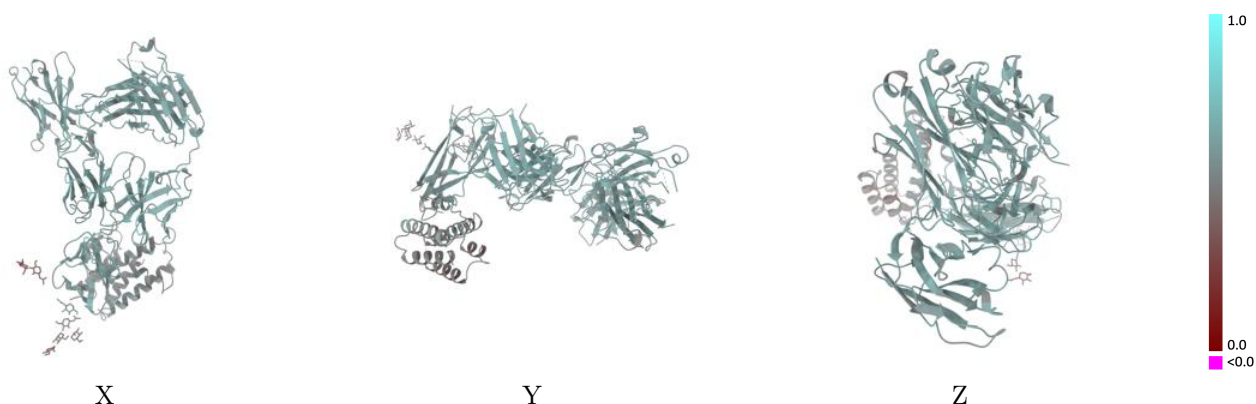
Y



Z

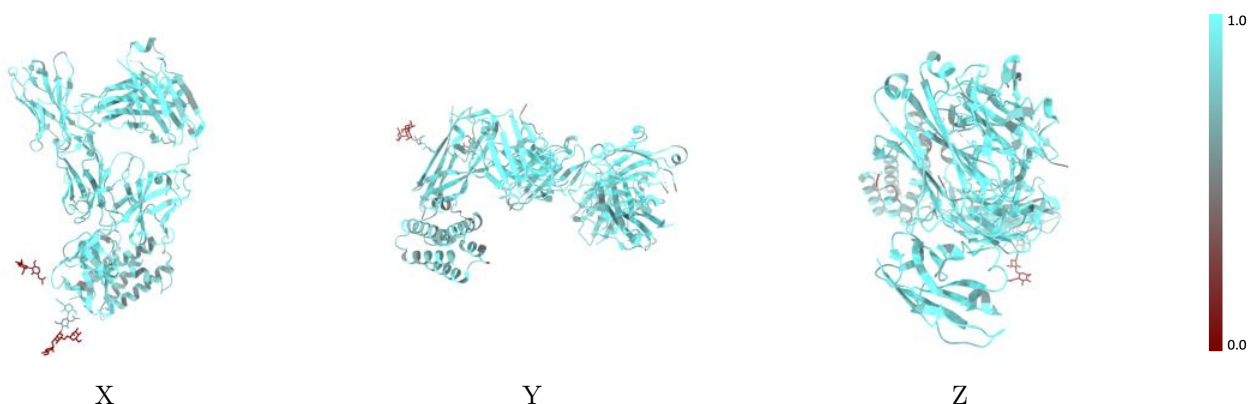
The images above show the 3D surface view of the map at the recommended contour level 0.27 at 50% transparency in yellow overlaid with a ribbon representation of the model coloured in blue. These images allow for the visual assessment of the quality of fit between the atomic model and the map.

9.2 Q-score mapped to coordinate model [i](#)



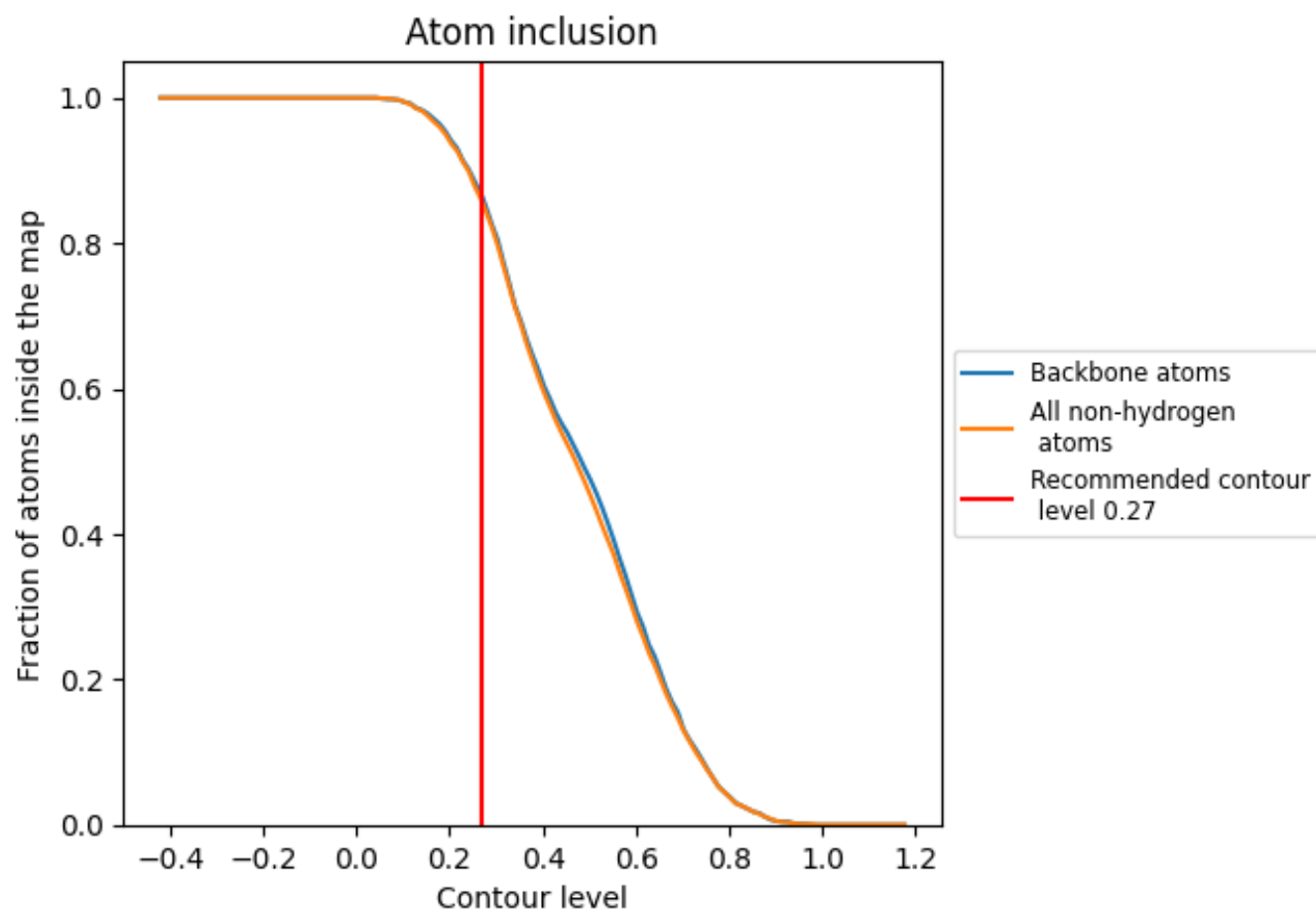
The images above show the model with each residue coloured according to its Q-score. This shows their resolvability in the map with higher Q-score values reflecting better resolvability. Please note: Q-score is calculating the resolvability of atoms, and thus high values are only expected at resolutions at which atoms can be resolved. Low Q-score values may therefore be expected for many entries.

9.3 Atom inclusion mapped to coordinate model [i](#)



The images above show the model with each residue coloured according to its atom inclusion. This shows to what extent they are inside the map at the recommended contour level (0.27).

9.4 Atom inclusion [i](#)



At the recommended contour level, 86% of all backbone atoms, 86% of all non-hydrogen atoms, are inside the map.

9.5 Map-model fit summary ⓘ

The table lists the average atom inclusion at the recommended contour level (0.27) and Q-score for the entire model and for each chain.

Chain	Atom inclusion	Q-score
All	<div><div></div>0.8570</div>	<div><div></div>0.5700</div>
A	<div><div></div>0.8660</div>	<div><div></div>0.5800</div>
B	<div><div></div>0.7630</div>	<div><div></div>0.4850</div>
C	<div><div></div>0.3110</div>	<div><div></div>0.4620</div>
D	<div><div></div>0.0710</div>	<div><div></div>0.3330</div>
H	<div><div></div>0.9020</div>	<div><div></div>0.5940</div>
L	<div><div></div>0.8960</div>	<div><div></div>0.5900</div>
N	<div><div></div>0.8860</div>	<div><div></div>0.5770</div>

1.0

0.0

<0.0