



wwPDB EM Validation Summary Report ⓘ

Oct 1, 2022 – 10:01 am BST

PDB ID : 7ZCI
EMDB ID : EMD-14632
Title : Complex I from E. coli, LMNG-purified, under Turnover at pH 6, Resting state
Authors : Kravchuk, V.; Kampjut, D.; Sazanov, L.
Deposited on : 2022-03-28
Resolution : 2.69 Å(reported)
Based on initial models : 4HEA, 3RKO

This is a wwPDB EM Validation Summary Report for a publicly released PDB entry.

We welcome your comments at validation@mail.wwpdb.org

A user guide is available at

<https://www.wwpdb.org/validation/2017/EMValidationReportHelp>

with specific help available everywhere you see the ⓘ symbol.

The types of validation reports are described at

<http://www.wwpdb.org/validation/2017/FAQs#types>.

The following versions of software and data (see [references ⓘ](#)) were used in the production of this report:

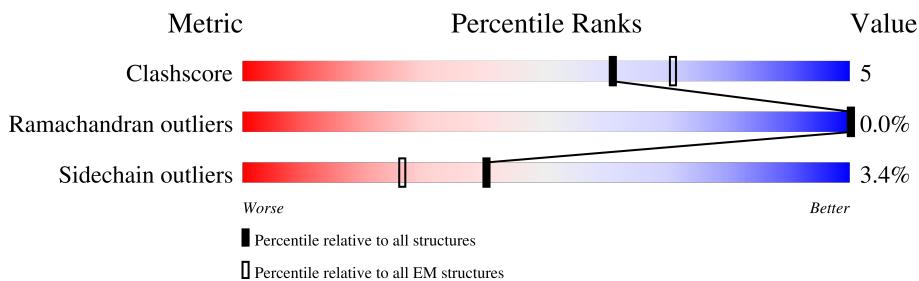
EMDB validation analysis : 0.0.1.dev43
Mogul : 1.8.4, CSD as541be (2020)
MolProbity : 4.02b-467
buster-report : 1.1.7 (2018)
Percentile statistics : 20191225.v01 (using entries in the PDB archive December 25th 2019)
MapQ : 1.9.9
Ideal geometry (proteins) : Engh & Huber (2001)
Ideal geometry (DNA, RNA) : Parkinson et al. (1996)
Validation Pipeline (wwPDB-VP) : 2.31.2

1 Overall quality at a glance

The following experimental techniques were used to determine the structure:
ELECTRON MICROSCOPY

The reported resolution of this entry is 2.69 Å.

Percentile scores (ranging between 0-100) for global validation metrics of the entry are shown in the following graphic. The table shows the number of entries on which the scores are based.




Metric	Whole archive (#Entries)	EM structures (#Entries)
Clashscore	158937	4297
Ramachandran outliers	154571	4023
Sidechain outliers	154315	3826

The table below summarises the geometric issues observed across the polymeric chains and their fit to the map. The red, orange, yellow and green segments of the bar indicate the fraction of residues that contain outliers for ≥ 3 , 2, 1 and 0 types of geometric quality criteria respectively. A grey segment represents the fraction of residues that are not modelled. The numeric value for each fraction is indicated below the corresponding segment, with a dot representing fractions $\leq 5\%$. The upper red bar (where present) indicates the fraction of residues that have poor fit to the EM map (all-atom inclusion $< 40\%$). The numeric value is given above the bar.

Mol	Chain	Length	Quality of chain
1	F	445	
2	E	166	
3	G	908	
4	C	596	
5	B	220	
6	I	180	
7	H	325	
8	A	147	

Continued on next page...

Continued from previous page...

Mol	Chain	Length	Quality of chain
9	L	613	 85% 12%
10	M	509	 84% 14%
11	N	485	 83% 14%
12	K	100	 82% 17%
13	J	184	 7% 70% 18% 12%

The following table lists non-polymeric compounds, carbohydrate monomers and non-standard residues in protein, DNA, RNA chains that are outliers for geometric or electron-density-fit criteria:

Mol	Type	Chain	Res	Chirality	Geometry	Clashes	Electron density
14	SF4	B	301	-	-	X	-

2 Entry composition [i](#)

There are 20 unique types of molecules in this entry. The entry contains 36981 atoms, of which 0 are hydrogens and 0 are deuteriums.

In the tables below, the AltConf column contains the number of residues with at least one atom in alternate conformation and the Trace column contains the number of residues modelled with at most 2 atoms.

- Molecule 1 is a protein called NADH-quinone oxidoreductase subunit F.

Mol	Chain	Residues	Atoms					AltConf	Trace
			Total	C	N	O	S		
1	F	442	3432	2177	601	633	21	0	0

- Molecule 2 is a protein called NADH dehydrogenase I subunit E.

Mol	Chain	Residues	Atoms					AltConf	Trace
			Total	C	N	O	S		
2	E	156	1220	768	215	229	8	0	0

- Molecule 3 is a protein called NADH-quinone oxidoreductase.

Mol	Chain	Residues	Atoms					AltConf	Trace
			Total	C	N	O	S		
3	G	905	7027	4392	1269	1329	37	0	0

- Molecule 4 is a protein called NADH-quinone oxidoreductase subunit C/D.

Mol	Chain	Residues	Atoms					AltConf	Trace
			Total	C	N	O	S		
4	C	576	4628	2966	807	833	22	0	0

- Molecule 5 is a protein called NADH-quinone oxidoreductase subunit B.

Mol	Chain	Residues	Atoms					AltConf	Trace
			Total	C	N	O	S		
5	B	169	1339	848	231	243	17	0	0

- Molecule 6 is a protein called NADH-quinone oxidoreductase subunit I.

Mol	Chain	Residues	Atoms					AltConf	Trace
			Total	C	N	O	S		
6	I	145	1149	728	192	217	12	0	0

- Molecule 7 is a protein called NADH-quinone oxidoreductase subunit H.

Mol	Chain	Residues	Atoms					AltConf	Trace
			Total	C	N	O	S		
7	H	309	Total	C	N	O	S	0	0
			2422	1628	375	401	18		

- Molecule 8 is a protein called NADH-quinone oxidoreductase subunit A.

Mol	Chain	Residues	Atoms					AltConf	Trace
			Total	C	N	O	S		
8	A	101	Total	C	N	O	S	0	0
			796	547	120	125	4		

- Molecule 9 is a protein called NADH dehydrogenase subunit L.

Mol	Chain	Residues	Atoms					AltConf	Trace
			Total	C	N	O	S		
9	L	601	Total	C	N	O	S	0	0
			4593	3055	734	772	32		

- Molecule 10 is a protein called NADH dehydrogenase I subunit M.

Mol	Chain	Residues	Atoms					AltConf	Trace
			Total	C	N	O	S		
10	M	504	Total	C	N	O	S	0	0
			3953	2661	617	646	29		

- Molecule 11 is a protein called NADH-quinone oxidoreductase subunit N.

Mol	Chain	Residues	Atoms					AltConf	Trace
			Total	C	N	O	S		
11	N	480	Total	C	N	O	S	0	0
			3635	2427	574	614	20		

- Molecule 12 is a protein called NADH-quinone oxidoreductase subunit K.

Mol	Chain	Residues	Atoms					AltConf	Trace
			Total	C	N	O	S		
12	K	100	Total	C	N	O	S	0	0
			760	494	132	129	5		

- Molecule 13 is a protein called NADH-quinone oxidoreductase subunit J.

Mol	Chain	Residues	Atoms					AltConf	Trace
			Total	C	N	O	S		
13	J	162	Total	C	N	O	S	0	0
			1226	824	188	207	7		

- Molecule 14 is IRON/SULFUR CLUSTER (three-letter code: SF4) (formula: Fe₄S₄).



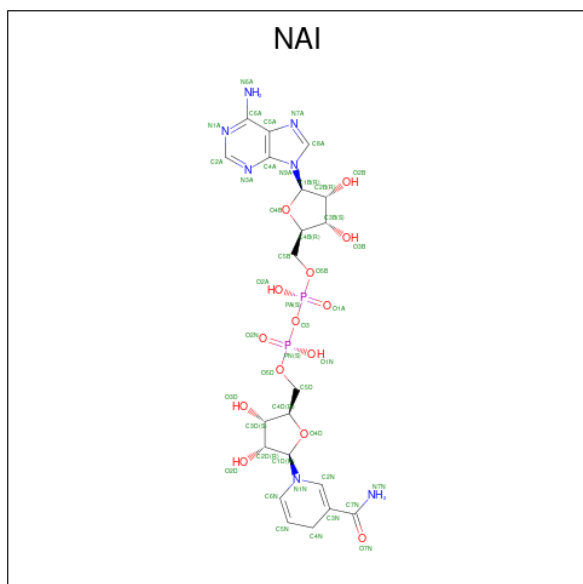
Mol	Chain	Residues	Atoms			AltConf
			Total	Fe	S	
14	F	1	8	4	4	0
14	G	1	24	12	12	0
14	G	1	24	12	12	0
14	G	1	24	12	12	0
14	B	1	8	4	4	0
14	I	1	16	8	8	0
14	I	1	16	8	8	0

- Molecule 15 is FLAVIN MONONUCLEOTIDE (three-letter code: FMN) (formula: C₁₇H₂₁N₄O₉P).



Mol	Chain	Residues	Atoms					AltConf
			Total	C	N	O	P	
15	F	1	31	17	4	9	1	0

- Molecule 16 is 1,4-DIHYDRONICOTINAMIDE ADENINE DINUCLEOTIDE (three-letter code: NAI) (formula: $C_{21}H_{29}N_7O_{14}P_2$).



Mol	Chain	Residues	Atoms					AltConf
			Total	C	N	O	P	
16	F	1	44	21	7	14	2	0

- Molecule 17 is FE2/S2 (INORGANIC) CLUSTER (three-letter code: FES) (formula: Fe_2S_2).

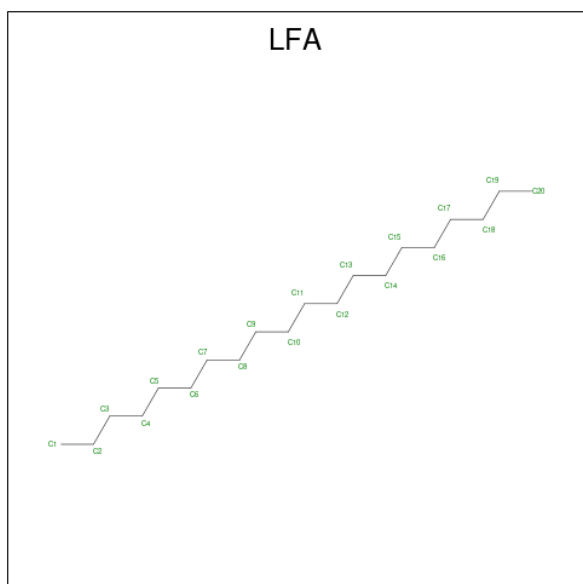


Mol	Chain	Residues	Atoms	AltConf
17	E	1	Total Fe S 4 2 2	0
17	G	1	Total Fe S 4 2 2	0

- Molecule 18 is CALCIUM ION (three-letter code: CA) (formula: Ca).

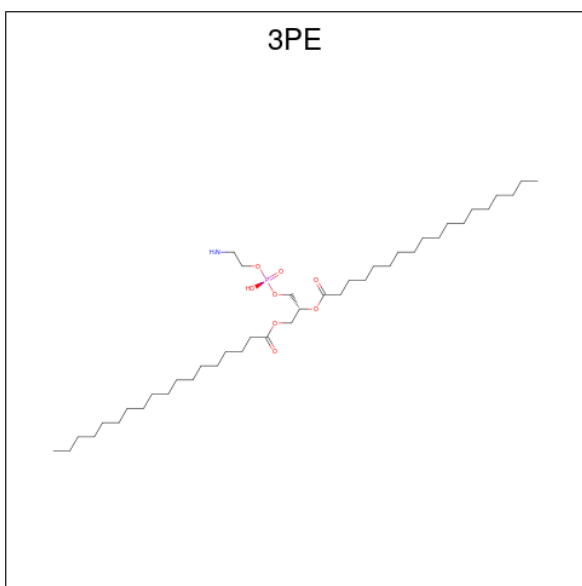
Mol	Chain	Residues	Atoms	AltConf
18	G	1	Total Ca 1 1	0

- Molecule 19 is EICOSANE (three-letter code: LFA) (formula: C₂₀H₄₂).



Mol	Chain	Residues	Atoms	AltConf
19	H	1	Total C 20 20	0
19	A	1	Total C 20 20	0
19	L	1	Total C 20 20	0
19	N	1	Total C 40 40	0
19	N	1	Total C 40 40	0

- Molecule 20 is 1,2-Distearoyl-sn-glycerophosphoethanolamine (three-letter code: 3PE) (formula: $C_{41}H_{82}NO_8P$).



Mol	Chain	Residues	Atoms					AltConf
			Total	C	N	O	P	
20	H	1	Total 51	C 41	N 1	O 8	P 1	0
20	L	1	Total 306	C 246	N 6	O 48	P 6	0
20	L	1	Total 306	C 246	N 6	O 48	P 6	0
20	L	1	Total 306	C 246	N 6	O 48	P 6	0
20	L	1	Total 306	C 246	N 6	O 48	P 6	0
20	L	1	Total 306	C 246	N 6	O 48	P 6	0

Continued on next page...

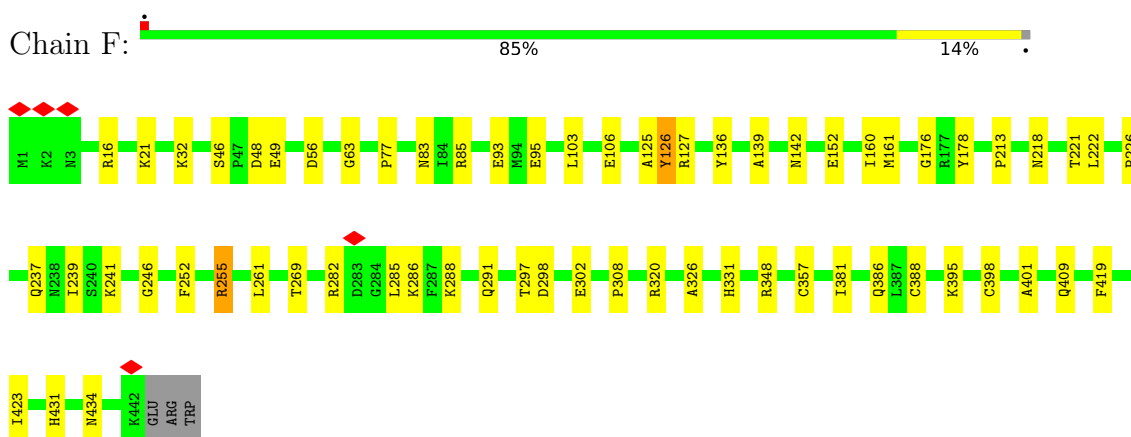
Continued from previous page...

Mol	Chain	Residues	Atoms					AltConf
			Total	C	N	O	P	
20	L	1	Total 306	246	6	48	6	0
20	M	1	Total 102	82	2	16	2	0
20	M	1	Total 102	82	2	16	2	0
20	N	1	Total 51	41	1	8	1	0
20	J	1	Total 51	41	1	8	1	0

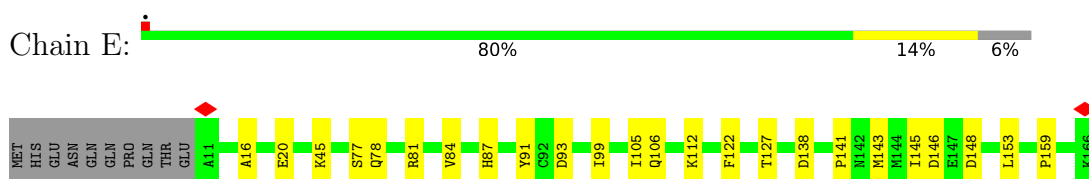
3 Residue-property plots [i](#)

These plots are drawn for all protein, RNA, DNA and oligosaccharide chains in the entry. The first graphic for a chain summarises the proportions of the various outlier classes displayed in the second graphic. The second graphic shows the sequence view annotated by issues in geometry and atom inclusion in map density. Residues are color-coded according to the number of geometric quality criteria for which they contain at least one outlier: green = 0, yellow = 1, orange = 2 and red = 3 or more. A red diamond above a residue indicates a poor fit to the EM map for this residue (all-atom inclusion < 40%). Stretches of 2 or more consecutive residues without any outlier are shown as a green connector. Residues present in the sample, but not in the model, are shown in grey.

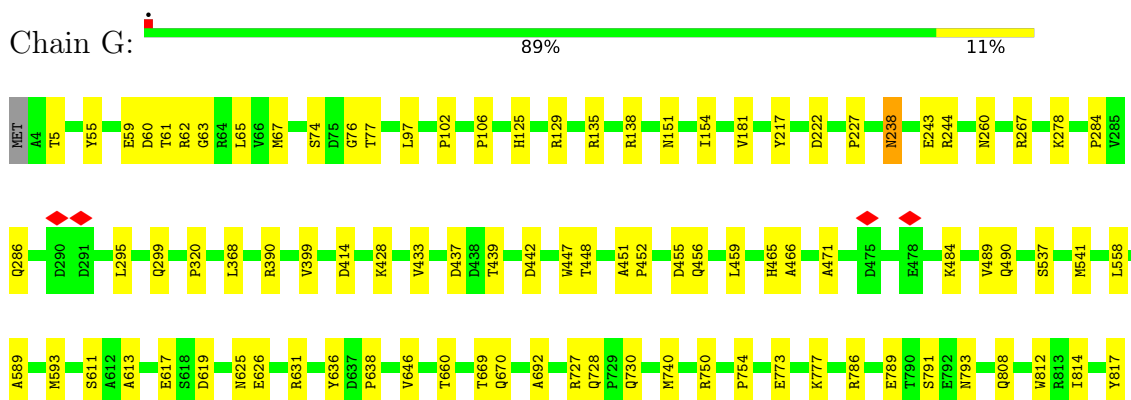
- Molecule 1: NADH-quinone oxidoreductase subunit F



- Molecule 2: NADH dehydrogenase I subunit E



- Molecule 3: NADH-quinone oxidoreductase





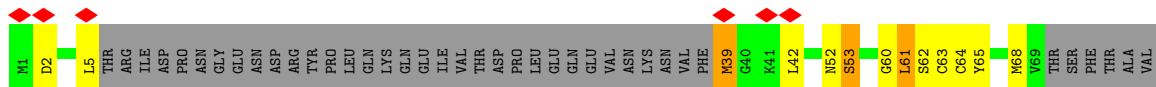
- Molecule 4: NADH-quinone oxidoreductase subunit C/D

Chain C: 84% 12%



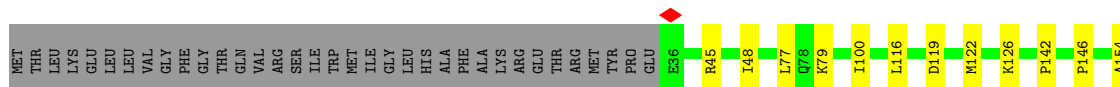
- Molecule 5: NADH-quinone oxidoreductase subunit B

Chain B: 5% 58% 17% 23%



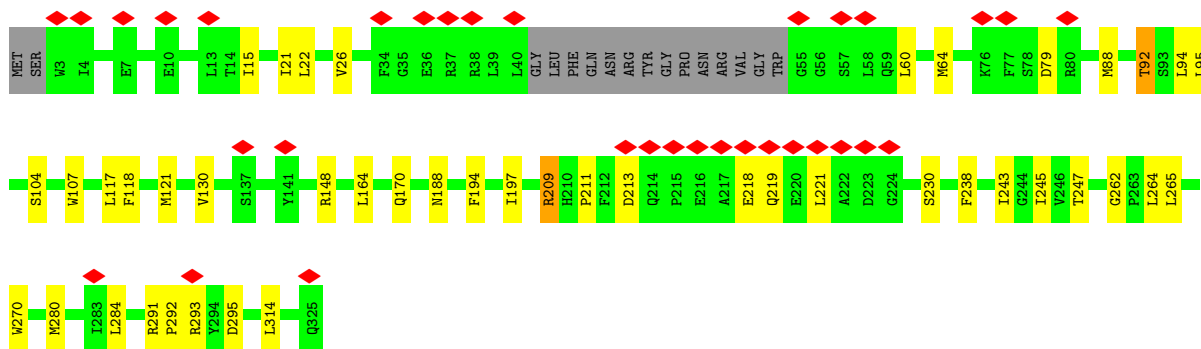
- Molecule 6: NADH-quinone oxidoreductase subunit I

Chain I: 71% 9% 19%

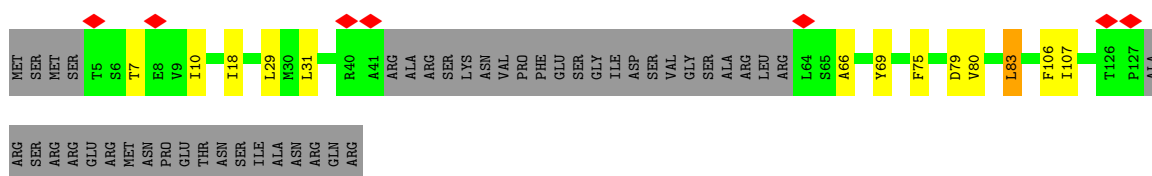


- Molecule 7: NADH-quinone oxidoreductase subunit H

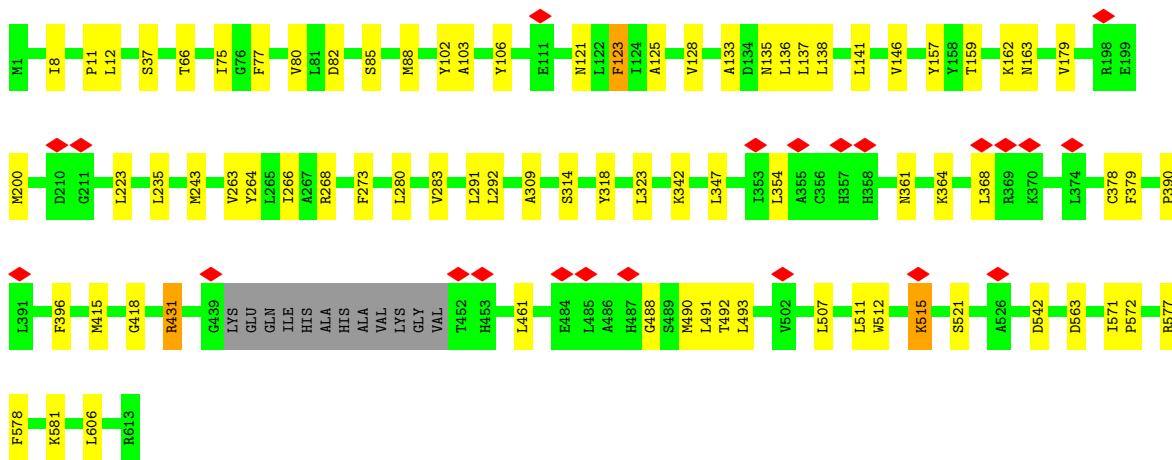
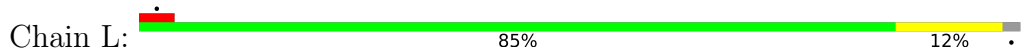
Chain H: 10% 81% 13% 5%



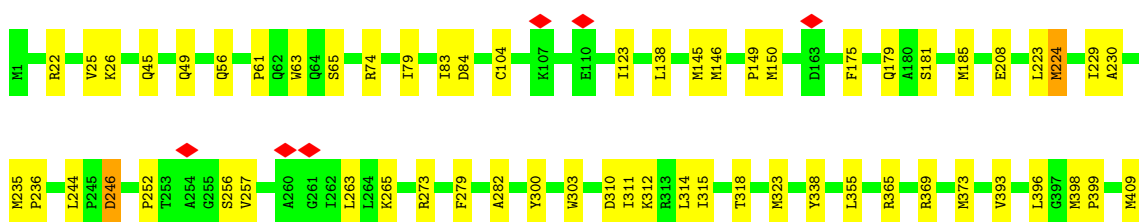
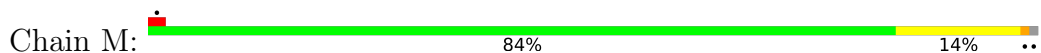
• Molecule 8: NADH-quinone oxidoreductase subunit A

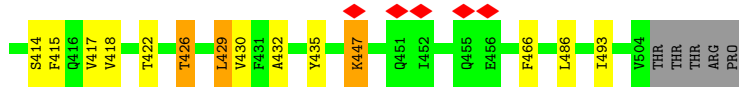


• Molecule 9: NADH dehydrogenase subunit L

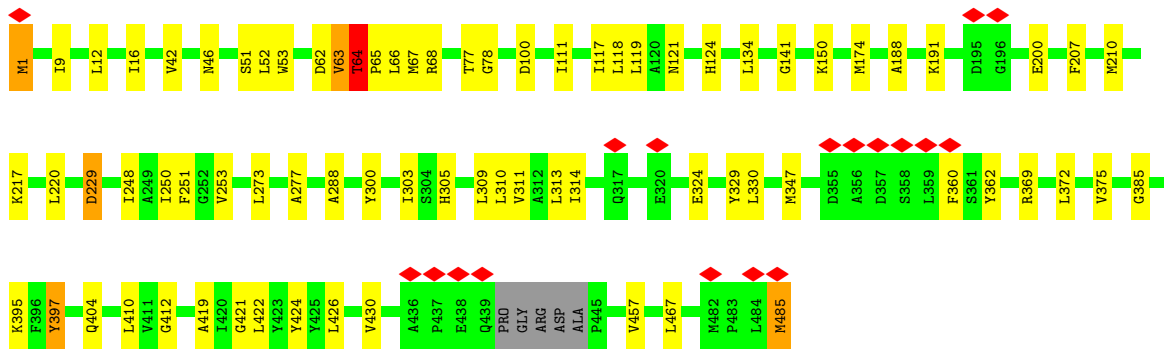
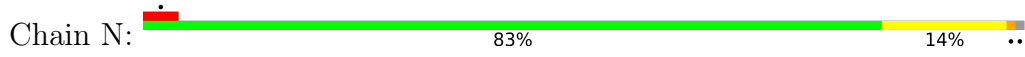


• Molecule 10: NADH dehydrogenase I subunit M

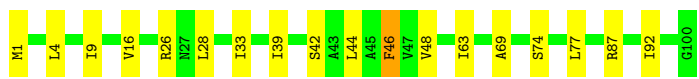
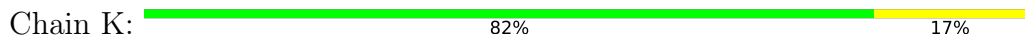




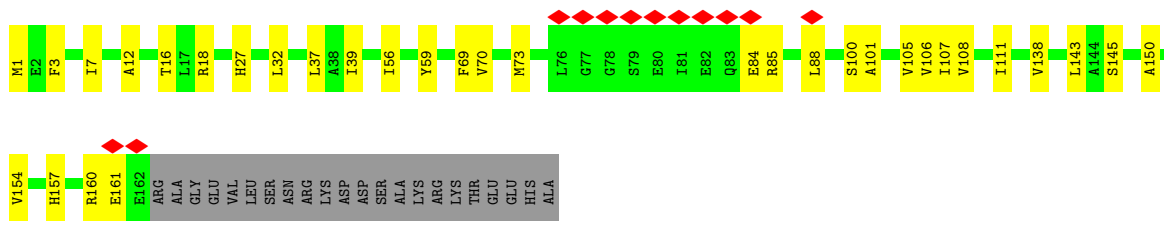
• Molecule 11: NADH-quinone oxidoreductase subunit N



• Molecule 12: NADH-quinone oxidoreductase subunit K



• Molecule 13: NADH-quinone oxidoreductase subunit J



4 Experimental information

Property	Value	Source
EM reconstruction method	SINGLE PARTICLE	Depositor
Imposed symmetry	POINT, Not provided	
Number of particles used	189796	Depositor
Resolution determination method	FSC 0.143 CUT-OFF	Depositor
CTF correction method	PHASE FLIPPING AND AMPLITUDE CORRECTION	Depositor
Microscope	FEI TITAN KRIOS	Depositor
Voltage (kV)	300	Depositor
Electron dose ($e^-/\text{\AA}^2$)	80	Depositor
Minimum defocus (nm)	1000	Depositor
Maximum defocus (nm)	2000	Depositor
Magnification	81000	Depositor
Image detector	GATAN K3 (6k x 4k)	Depositor
Maximum map value	0.538	Depositor
Minimum map value	-0.036	Depositor
Average map value	0.004	Depositor
Map value standard deviation	0.020	Depositor
Recommended contour level	0.055	Depositor
Map size (\AA)	152.63998, 205.63998, 244.85999	wwPDB
Map dimensions	144, 194, 231	wwPDB
Map angles ($^\circ$)	90.0, 90.0, 90.0	wwPDB
Pixel spacing (\AA)	1.06, 1.06, 1.06	Depositor

5 Model quality [i](#)

5.1 Standard geometry [i](#)

Bond lengths and bond angles in the following residue types are not validated in this section: CA, NAI, SF4, LFA, FES, 3PE, FMN

The Z score for a bond length (or angle) is the number of standard deviations the observed value is removed from the expected value. A bond length (or angle) with $|Z| > 5$ is considered an outlier worth inspection. RMSZ is the root-mean-square of all Z scores of the bond lengths (or angles).

Mol	Chain	Bond lengths		Bond angles	
		RMSZ	# Z >5	RMSZ	# Z >5
1	F	0.35	0/3511	0.55	0/4745
2	E	0.34	0/1248	0.52	0/1691
3	G	0.37	0/7178	0.56	0/9733
4	C	0.36	0/4750	0.56	0/6442
5	B	0.37	0/1367	0.61	0/1847
6	I	0.39	0/1176	0.61	1/1590 (0.1%)
7	H	0.34	0/2492	0.57	2/3391 (0.1%)
8	A	0.33	0/821	0.54	2/1119 (0.2%)
9	L	0.32	0/4711	0.53	0/6420
10	M	0.35	0/4074	0.56	2/5546 (0.0%)
11	N	0.34	0/3724	0.55	1/5081 (0.0%)
12	K	0.34	0/769	0.53	0/1040
13	J	0.34	0/1252	0.54	0/1708
All	All	0.35	0/37073	0.56	8/50353 (0.0%)

Chiral center outliers are detected by calculating the chiral volume of a chiral center and verifying if the center is modelled as a planar moiety or with the opposite hand. A planarity outlier is detected by checking planarity of atoms in a peptide group, atoms in a mainchain group or atoms of a sidechain that are expected to be planar.

Mol	Chain	#Chirality outliers	#Planarity outliers
2	E	0	1
3	G	0	1
11	N	0	2
All	All	0	4

There are no bond length outliers.

The worst 5 of 8 bond angle outliers are listed below:

Mol	Chain	Res	Type	Atoms	Z	Observed(°)	Ideal(°)
10	M	429	LEU	CA-CB-CG	6.63	130.55	115.30
7	H	164	LEU	CB-CG-CD2	-6.36	100.20	111.00
10	M	263	LEU	CA-CB-CG	5.73	128.47	115.30
6	I	119	ASP	CB-CG-OD2	5.32	123.09	118.30
8	A	83	LEU	CA-CB-CG	5.31	127.52	115.30

There are no chirality outliers.

All (4) planarity outliers are listed below:

Mol	Chain	Res	Type	Group
2	E	145	ILE	Peptide
3	G	260	ASN	Peptide
11	N	63	VAL	Peptide
11	N	64	THR	Peptide

5.2 Too-close contacts [i](#)

In the following table, the Non-H and H(model) columns list the number of non-hydrogen atoms and hydrogen atoms in the chain respectively. The H(added) column lists the number of hydrogen atoms added and optimized by MolProbity. The Clashes column lists the number of clashes within the asymmetric unit, whereas Symm-Clashes lists symmetry-related clashes.

Mol	Chain	Non-H	H(model)	H(added)	Clashes	Symm-Clashes
1	F	3432	0	3405	36	0
2	E	1220	0	1187	13	0
3	G	7027	0	6829	44	0
4	C	4628	0	4533	46	0
5	B	1339	0	1330	27	0
6	I	1149	0	1114	11	0
7	H	2422	0	2469	24	0
8	A	796	0	804	11	0
9	L	4593	0	4734	42	0
10	M	3953	0	4053	39	0
11	N	3635	0	3802	50	0
12	K	760	0	817	14	0
13	J	1226	0	1297	23	0
14	B	8	0	0	2	0
14	F	8	0	0	0	0
14	G	24	0	0	0	0
14	I	16	0	0	0	0
15	F	31	0	19	1	0
16	F	44	0	27	3	0

Continued on next page...

Continued from previous page...

Mol	Chain	Non-H	H(model)	H(added)	Clashes	Symm-Clashes
17	E	4	0	0	0	0
17	G	4	0	0	1	0
18	G	1	0	0	0	0
19	A	20	0	42	0	0
19	H	20	0	42	1	0
19	L	20	0	42	0	0
19	N	40	0	84	2	0
20	H	51	0	82	3	0
20	J	51	0	82	2	0
20	L	306	0	492	7	0
20	M	102	0	164	7	0
20	N	51	0	82	3	0
All	All	36981	0	37532	339	0

The all-atom clashscore is defined as the number of clashes found per 1000 atoms (including hydrogen atoms). The all-atom clashscore for this structure is 5.

The worst 5 of 339 close contacts within the same asymmetric unit are listed below, sorted by their clash magnitude.

Atom-1	Atom-2	Interatomic distance (Å)	Clash overlap (Å)
1:F:95:GLU:HB2	16:F:503:NAI:H42N	1.61	0.80
11:N:63:VAL:O	11:N:67:MET:HB2	1.85	0.77
10:M:181:SER:HB2	10:M:230:ALA:HA	1.71	0.73
11:N:64:THR:HB	11:N:66:LEU:H	1.54	0.73
3:G:238:ASN:HD22	3:G:238:ASN:N	1.86	0.72

There are no symmetry-related clashes.

5.3 Torsion angles [i](#)

5.3.1 Protein backbone [i](#)

In the following table, the Percentiles column shows the percent Ramachandran outliers of the chain as a percentile score with respect to all PDB entries followed by that with respect to all EM entries.

The Analysed column shows the number of residues for which the backbone conformation was analysed, and the total number of residues.

Mol	Chain	Analysed	Favoured	Allowed	Outliers	Percentiles	
1	F	440/445 (99%)	430 (98%)	10 (2%)	0	100	100
2	E	154/166 (93%)	150 (97%)	4 (3%)	0	100	100
3	G	903/908 (99%)	879 (97%)	24 (3%)	0	100	100
4	C	568/596 (95%)	559 (98%)	9 (2%)	0	100	100
5	B	163/220 (74%)	156 (96%)	6 (4%)	1 (1%)	25	50
6	I	143/180 (79%)	140 (98%)	3 (2%)	0	100	100
7	H	305/325 (94%)	293 (96%)	12 (4%)	0	100	100
8	A	97/147 (66%)	97 (100%)	0	0	100	100
9	L	597/613 (97%)	579 (97%)	18 (3%)	0	100	100
10	M	502/509 (99%)	487 (97%)	15 (3%)	0	100	100
11	N	476/485 (98%)	465 (98%)	10 (2%)	1 (0%)	47	73
12	K	98/100 (98%)	96 (98%)	2 (2%)	0	100	100
13	J	160/184 (87%)	155 (97%)	5 (3%)	0	100	100
All	All	4606/4878 (94%)	4486 (97%)	118 (3%)	2 (0%)	100	100

All (2) Ramachandran outliers are listed below:

Mol	Chain	Res	Type
11	N	64	THR
5	B	61	LEU

5.3.2 Protein sidechains [i](#)

In the following table, the Percentiles column shows the percent sidechain outliers of the chain as a percentile score with respect to all PDB entries followed by that with respect to all EM entries.

The Analysed column shows the number of residues for which the sidechain conformation was analysed, and the total number of residues.

Mol	Chain	Analysed	Rotameric	Outliers	Percentiles	
1	F	356/359 (99%)	344 (97%)	12 (3%)	37	66
2	E	129/139 (93%)	125 (97%)	4 (3%)	40	69
3	G	733/736 (100%)	708 (97%)	25 (3%)	37	66
4	C	489/515 (95%)	474 (97%)	15 (3%)	40	69
5	B	146/192 (76%)	134 (92%)	12 (8%)	11	26

Continued on next page...

Continued from previous page...

Mol	Chain	Analysed	Rotameric	Outliers	Percentiles	
6	I	124/154 (80%)	120 (97%)	4 (3%)	39	68
7	H	255/269 (95%)	249 (98%)	6 (2%)	49	77
8	A	79/119 (66%)	79 (100%)	0	100	100
9	L	476/485 (98%)	459 (96%)	17 (4%)	35	64
10	M	413/418 (99%)	394 (95%)	19 (5%)	27	54
11	N	381/385 (99%)	373 (98%)	8 (2%)	53	80
12	K	79/79 (100%)	76 (96%)	3 (4%)	33	62
13	J	128/146 (88%)	123 (96%)	5 (4%)	32	61
All	All	3788/3996 (95%)	3658 (97%)	130 (3%)	40	66

5 of 130 residues with a non-rotameric sidechain are listed below:

Mol	Chain	Res	Type
11	N	100	ASP
11	N	404	GLN
4	C	356	PHE
4	C	319	HIS
11	N	485	MET

Sometimes sidechains can be flipped to improve hydrogen bonding and reduce clashes. All (1) such sidechains are listed below:

Mol	Chain	Res	Type
5	B	196	ASN

5.3.3 RNA [i](#)

There are no RNA molecules in this entry.

5.4 Non-standard residues in protein, DNA, RNA chains [i](#)

There are no non-standard protein/DNA/RNA residues in this entry.

5.5 Carbohydrates [i](#)

There are no monosaccharides in this entry.

5.6 Ligand geometry

Of 28 ligands modelled in this entry, 1 is monoatomic - leaving 27 for Mogul analysis.

In the following table, the Counts columns list the number of bonds (or angles) for which Mogul statistics could be retrieved, the number of bonds (or angles) that are observed in the model and the number of bonds (or angles) that are defined in the Chemical Component Dictionary. The Link column lists molecule types, if any, to which the group is linked. The Z score for a bond length (or angle) is the number of standard deviations the observed value is removed from the expected value. A bond length (or angle) with $|Z| > 2$ is considered an outlier worth inspection. RMSZ is the root-mean-square of all Z scores of the bond lengths (or angles).

Mol	Type	Chain	Res	Link	Bond lengths			Bond angles		
					Counts	RMSZ	# Z > 2	Counts	RMSZ	# Z > 2
20	3PE	M	701	-	50,50,50	0.30	0	53,55,55	0.27	0
20	3PE	H	602	-	50,50,50	0.31	0	53,55,55	0.35	0
14	SF4	F	501	1	0,12,12	-	-	-		
16	NAI	F	503	-	42,48,48	0.54	0	47,73,73	0.58	1 (2%)
19	LFA	H	601	-	19,19,19	0.14	0	18,18,18	0.13	0
19	LFA	N	901	-	19,19,19	0.14	0	18,18,18	0.18	0
20	3PE	L	803	-	50,50,50	0.31	0	53,55,55	0.30	0
20	3PE	J	201	-	50,50,50	0.30	0	53,55,55	0.28	0
20	3PE	M	702	-	50,50,50	0.29	0	53,55,55	0.28	0
14	SF4	G	1001	3	0,12,12	-	-	-		
19	LFA	N	903	-	19,19,19	0.09	0	18,18,18	0.16	0
14	SF4	G	1003	3	0,12,12	-	-	-		
19	LFA	L	805	-	19,19,19	0.15	0	18,18,18	0.13	0
20	3PE	L	806	-	50,50,50	0.30	0	53,55,55	0.31	0
20	3PE	L	802	-	50,50,50	0.30	0	53,55,55	0.29	0
14	SF4	G	1002	3	0,12,12	-	-	-		
20	3PE	L	801	-	50,50,50	0.30	0	53,55,55	0.30	0
17	FES	E	201	2	0,4,4	-	-	-		
20	3PE	N	902	-	50,50,50	0.30	0	53,55,55	0.28	0
14	SF4	B	301	5	0,12,12	-	-	-		
14	SF4	I	201	6	0,12,12	-	-	-		
20	3PE	L	807	-	50,50,50	0.30	0	53,55,55	0.29	0
19	LFA	A	201	-	19,19,19	0.12	0	18,18,18	0.23	0
15	FMN	F	502	-	33,33,33	1.13	2 (6%)	48,50,50	1.29	8 (16%)
17	FES	G	1004	3	0,4,4	-	-	-		
14	SF4	I	202	6	0,12,12	-	-	-		
20	3PE	L	804	-	50,50,50	0.30	0	53,55,55	0.34	0

In the following table, the Chirals column lists the number of chiral outliers, the number of chiral centers analysed, the number of these observed in the model and the number defined in the Chemical Component Dictionary. Similar counts are reported in the Torsion and Rings columns.

'-' means no outliers of that kind were identified.

Mol	Type	Chain	Res	Link	Chirals	Torsions	Rings
20	3PE	M	701	-	-	9/54/54/54	-
20	3PE	H	602	-	-	6/54/54/54	-
16	NAI	F	503	-	-	5/25/72/72	0/5/5/5
19	LFA	H	601	-	-	2/17/17/17	-
19	LFA	N	901	-	-	3/17/17/17	-
14	SF4	F	501	1	-	-	0/6/5/5
20	3PE	L	803	-	-	13/54/54/54	-
20	3PE	J	201	-	-	11/54/54/54	-
20	3PE	M	702	-	-	6/54/54/54	-
14	SF4	G	1001	3	-	-	0/6/5/5
19	LFA	N	903	-	-	0/17/17/17	-
19	LFA	L	805	-	-	1/17/17/17	-
20	3PE	L	806	-	-	13/54/54/54	-
14	SF4	G	1003	3	-	-	0/6/5/5
20	3PE	L	802	-	-	10/54/54/54	-
14	SF4	G	1002	3	-	-	0/6/5/5
20	3PE	L	801	-	-	8/54/54/54	-
17	FES	E	201	2	-	-	0/1/1/1
20	3PE	N	902	-	-	12/54/54/54	-
14	SF4	B	301	5	-	-	0/6/5/5
20	3PE	L	807	-	-	14/54/54/54	-
14	SF4	I	201	6	-	-	0/6/5/5
19	LFA	A	201	-	-	1/17/17/17	-
15	FMN	F	502	-	-	10/18/18/18	0/3/3/3
17	FES	G	1004	3	-	-	0/1/1/1
14	SF4	I	202	6	-	-	0/6/5/5
20	3PE	L	804	-	-	16/54/54/54	-

All (2) bond length outliers are listed below:

Mol	Chain	Res	Type	Atoms	Z	Observed(Å)	Ideal(Å)
15	F	502	FMN	C4A-N5	3.55	1.37	1.30
15	F	502	FMN	C10-N1	2.14	1.37	1.33

The worst 5 of 9 bond angle outliers are listed below:

Mol	Chain	Res	Type	Atoms	Z	Observed(°)	Ideal(°)
15	F	502	FMN	C4-N3-C2	-3.20	119.73	125.64

Continued on next page...

Continued from previous page...

Mol	Chain	Res	Type	Atoms	Z	Observed(°)	Ideal(°)
15	F	502	FMN	C4A-C4-N3	2.67	119.98	113.19
15	F	502	FMN	C4A-C10-N10	2.63	120.33	116.48
15	F	502	FMN	O4-C4-C4A	-2.54	119.86	126.60
15	F	502	FMN	C4A-C10-N1	-2.38	119.22	124.73

There are no chirality outliers.

5 of 140 torsion outliers are listed below:

Mol	Chain	Res	Type	Atoms
15	F	502	FMN	N10-C1'-C2'-O2'
15	F	502	FMN	N10-C1'-C2'-C3'
15	F	502	FMN	C5'-O5'-P-O2P
15	F	502	FMN	C5'-O5'-P-O3P
16	F	503	NAI	C5B-O5B-PA-O1A

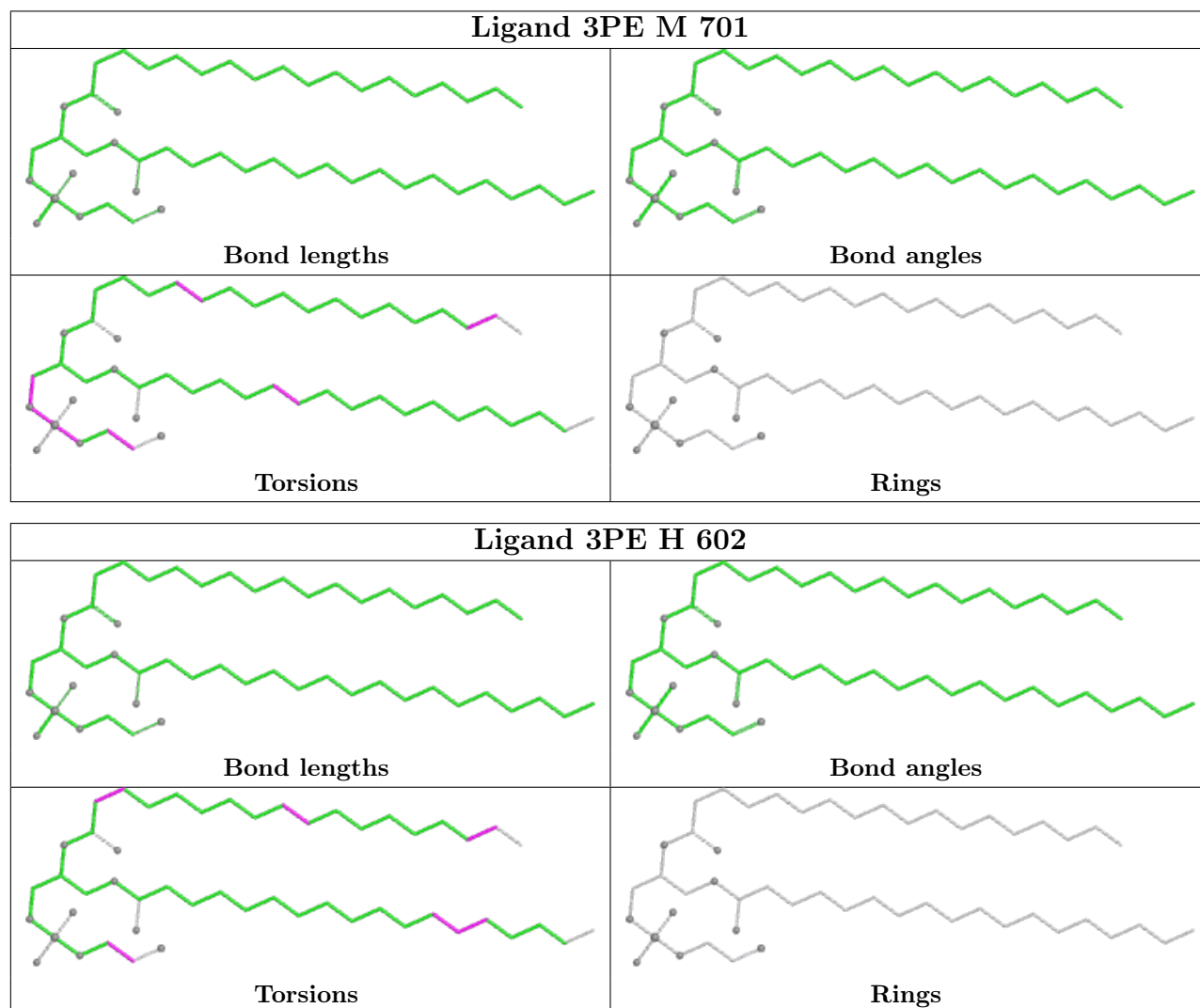
There are no ring outliers.

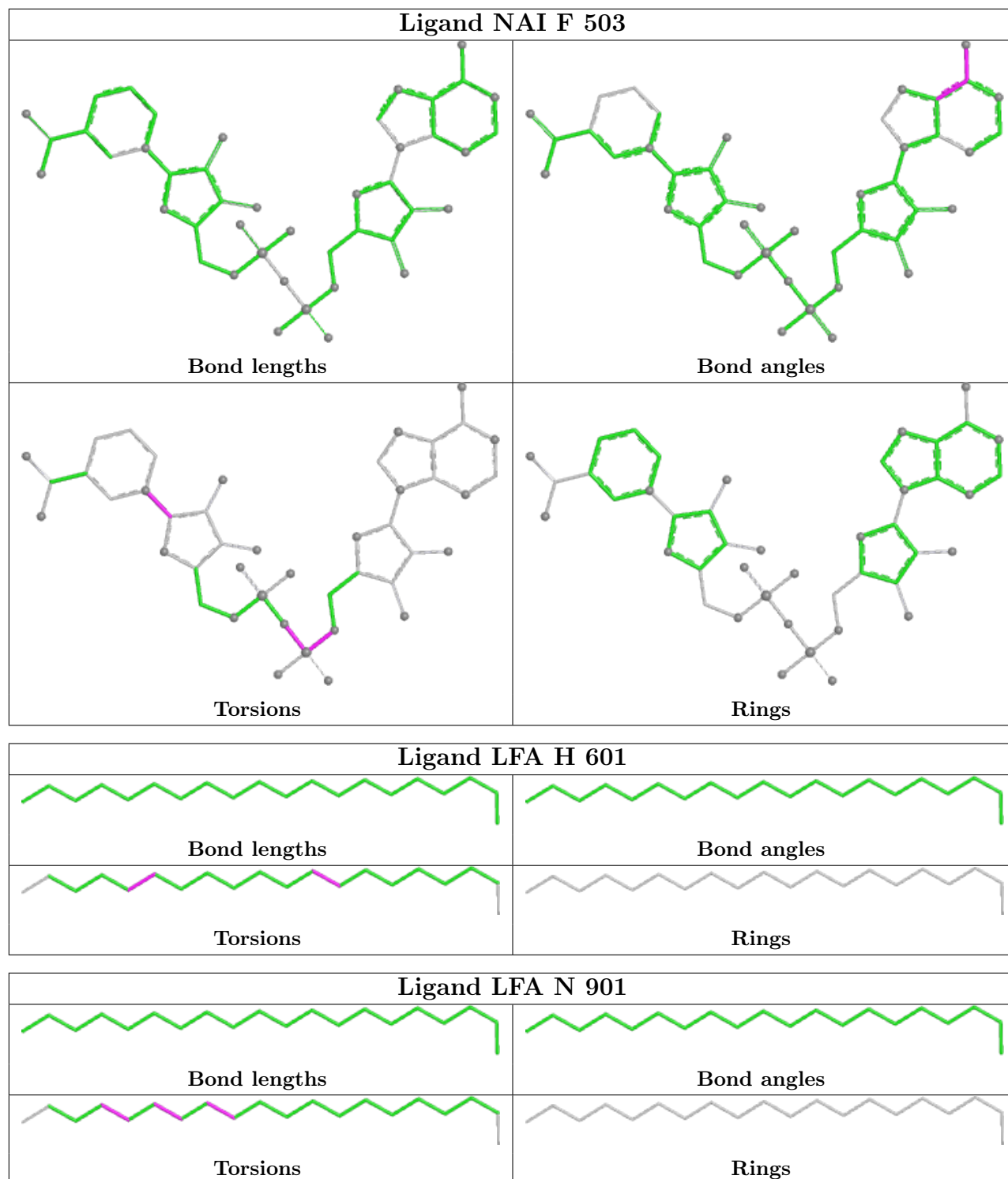
14 monomers are involved in 28 short contacts:

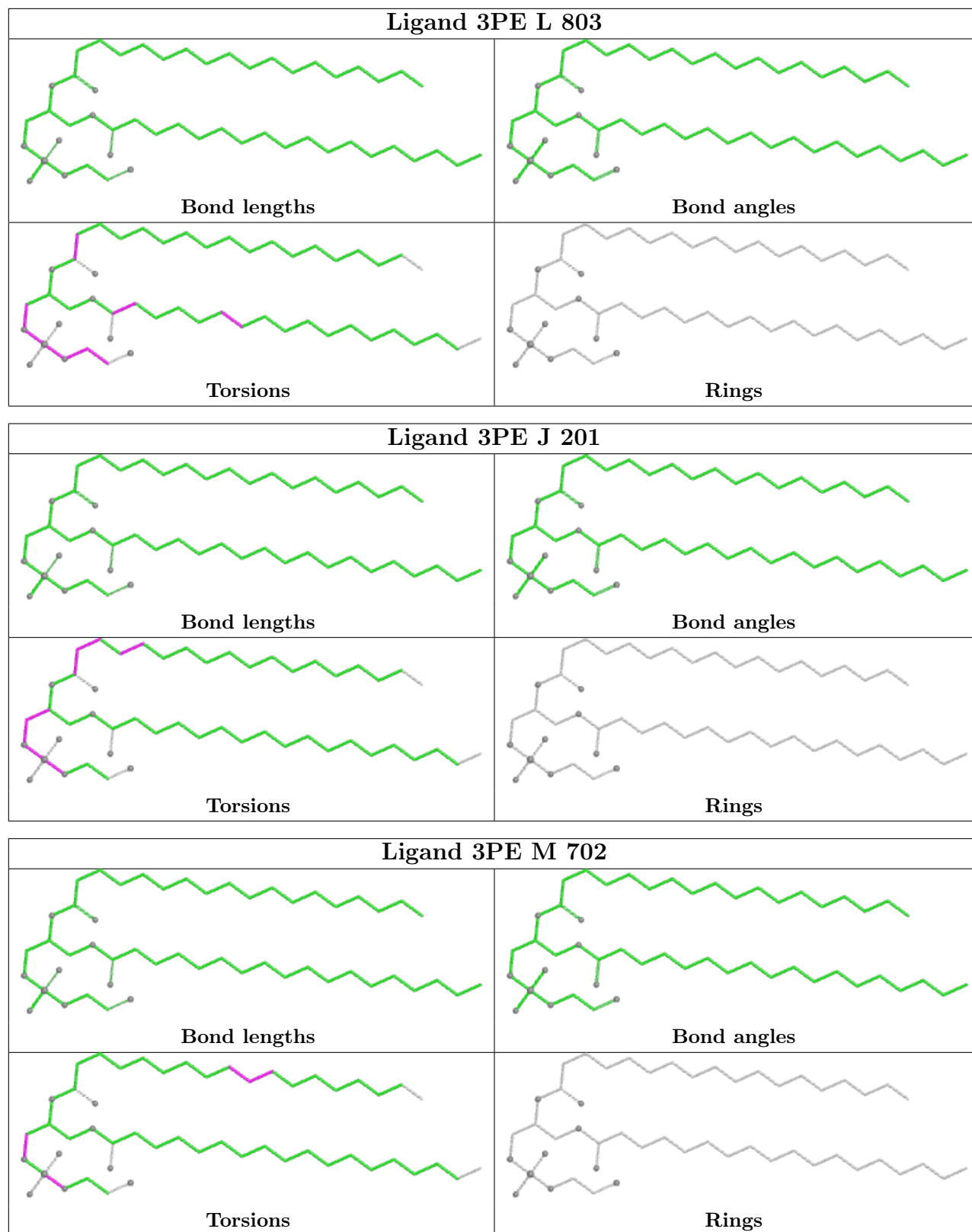
Mol	Chain	Res	Type	Clashes	Symm-Clashes
20	M	701	3PE	3	0
20	H	602	3PE	3	0
16	F	503	NAI	3	0
19	H	601	LFA	1	0
20	J	201	3PE	2	0
20	M	702	3PE	6	0
19	N	903	LFA	2	0
20	L	802	3PE	1	0
20	N	902	3PE	3	0
14	B	301	SF4	2	0
20	L	807	3PE	2	0
15	F	502	FMN	1	0
17	G	1004	FES	1	0
20	L	804	3PE	4	0

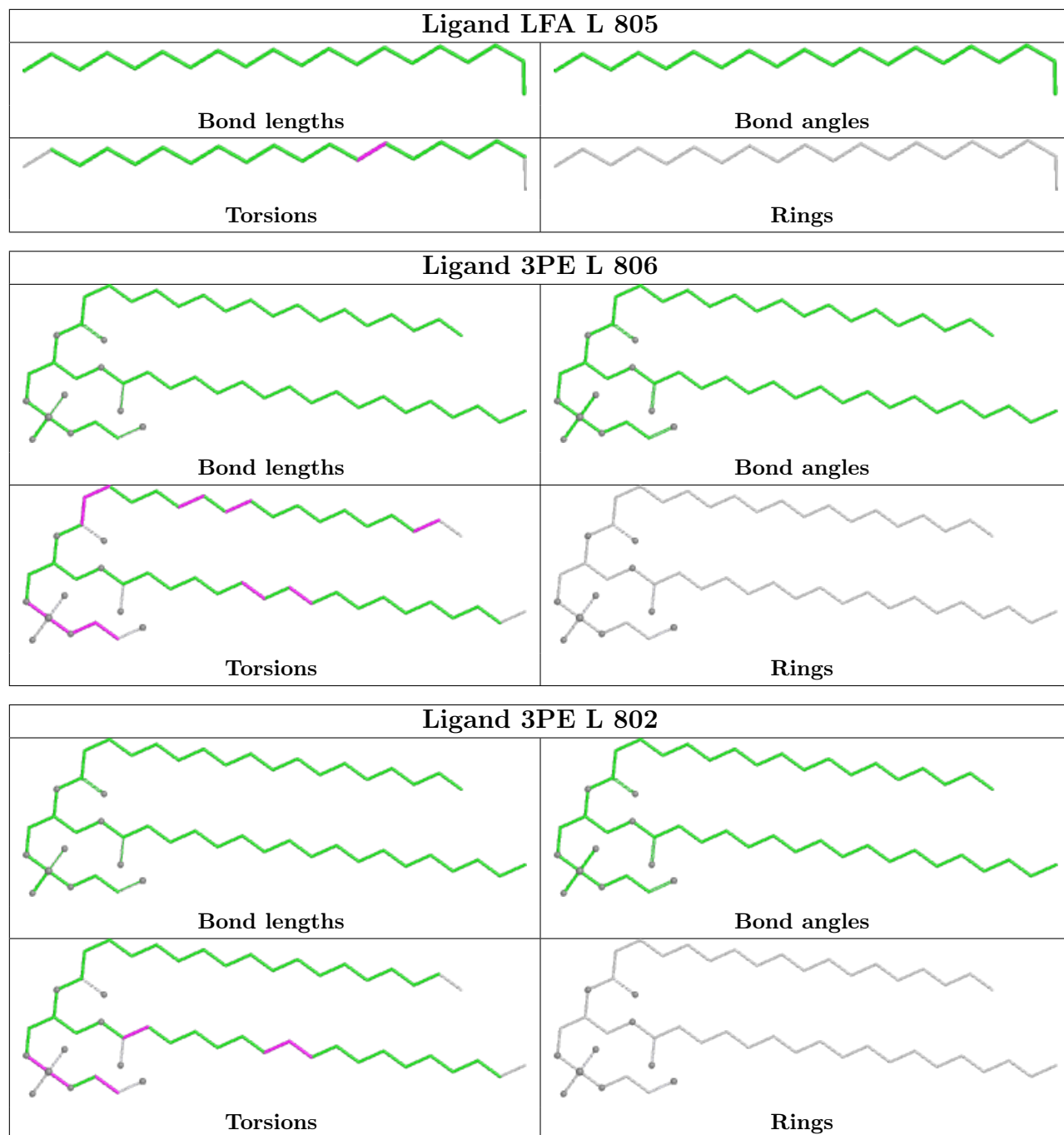
The following is a two-dimensional graphical depiction of Mogul quality analysis of bond lengths, bond angles, torsion angles, and ring geometry for all instances of the Ligand of Interest. In addition, ligands with molecular weight > 250 and outliers as shown on the validation Tables will also be included. For torsion angles, if less than 5% of the Mogul distribution of torsion angles is within 10 degrees of the torsion angle in question, then that torsion angle is considered an outlier. Any bond that is central to one or more torsion angles identified as an outlier by Mogul will be highlighted in the graph. For rings, the root-mean-square deviation (RMSD) between the ring in question and similar rings identified by Mogul is calculated over all ring torsion angles. If the

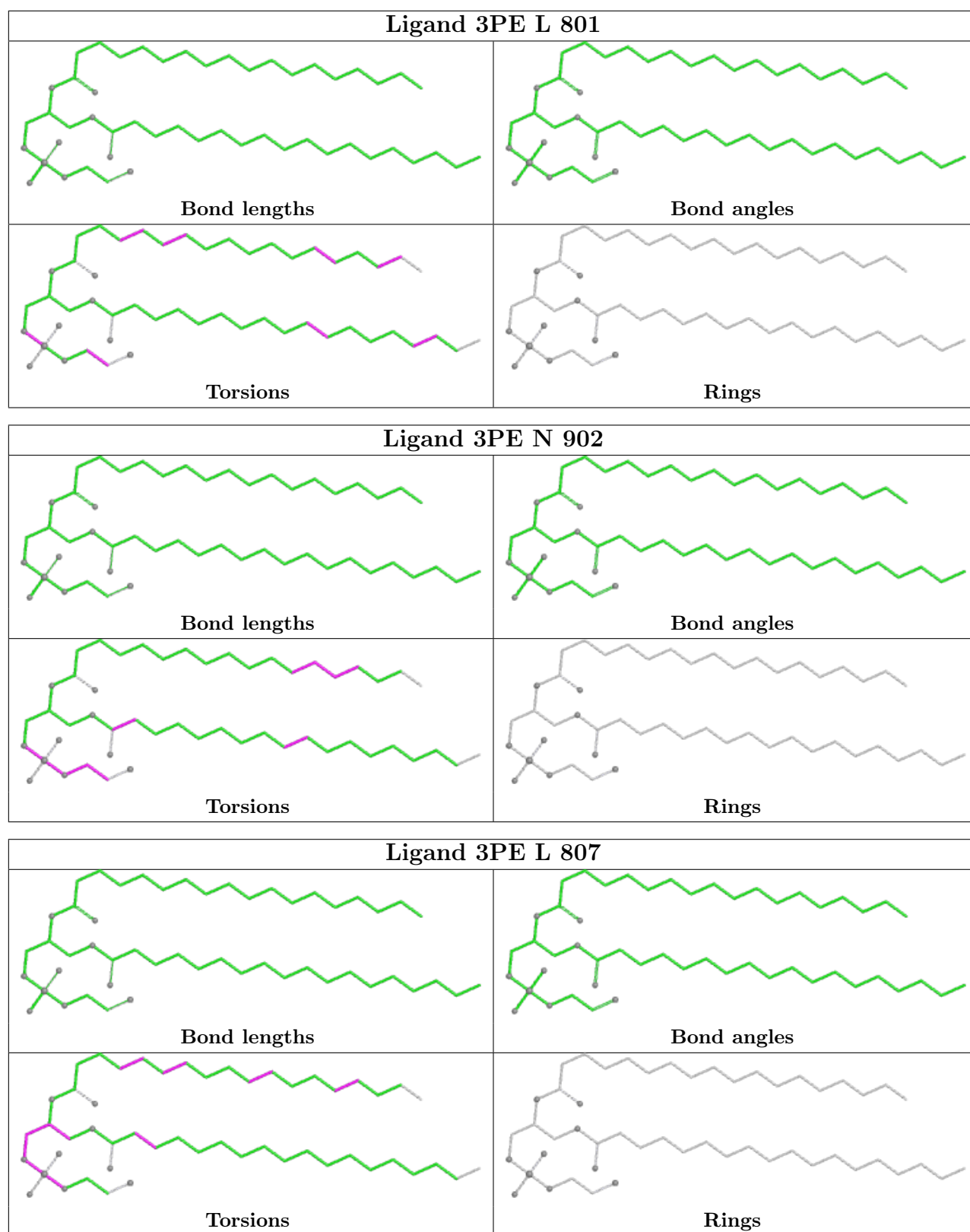
average RMSD is greater than 60 degrees and the minimal RMSD between the ring in question and any Mogul-identified rings is also greater than 60 degrees, then that ring is considered an outlier. The outliers are highlighted in purple. The color gray indicates Mogul did not find sufficient equivalents in the CSD to analyse the geometry.

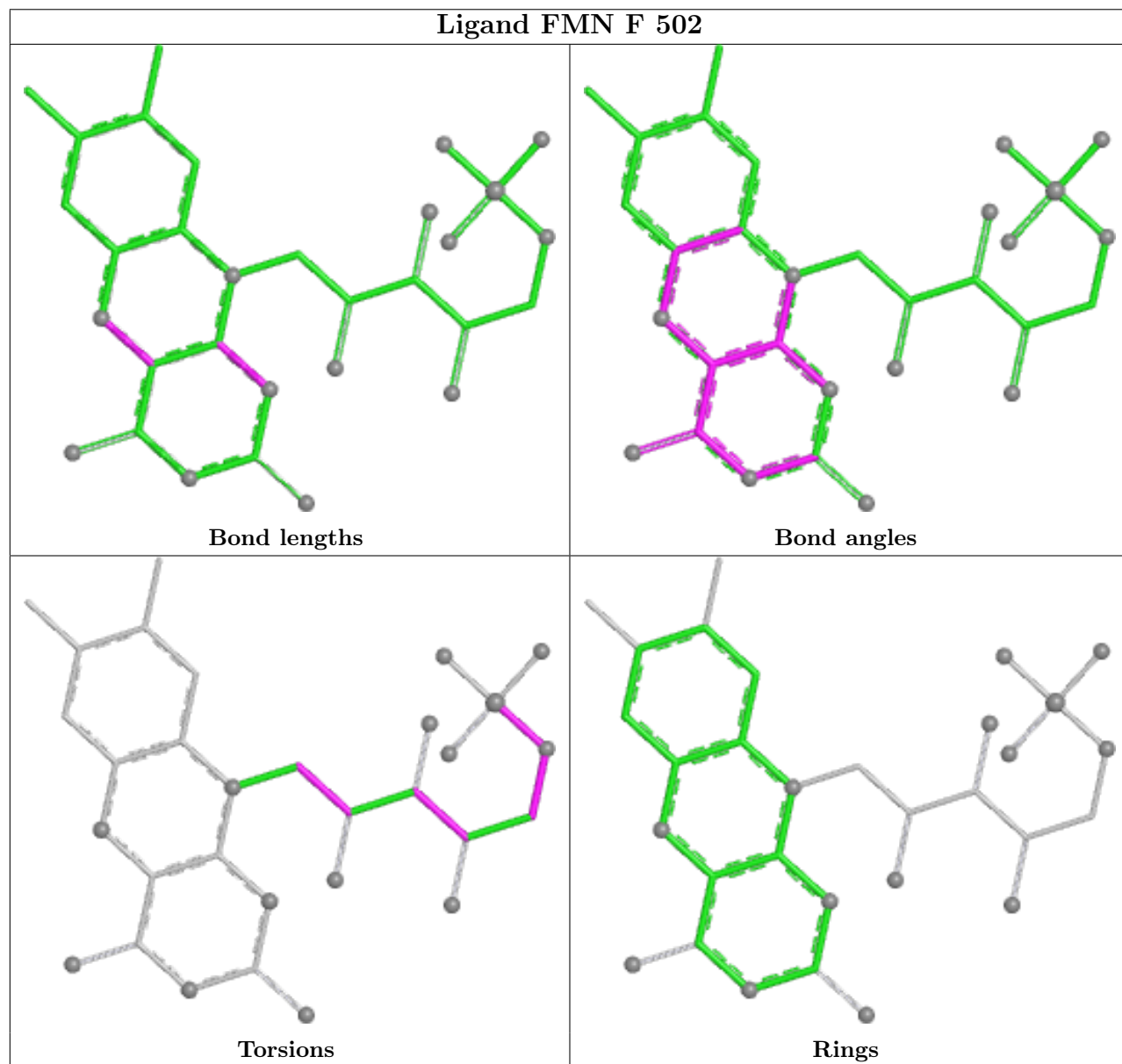
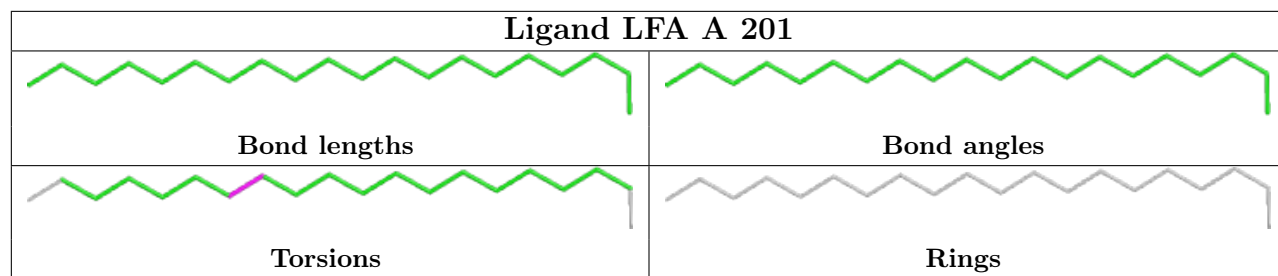


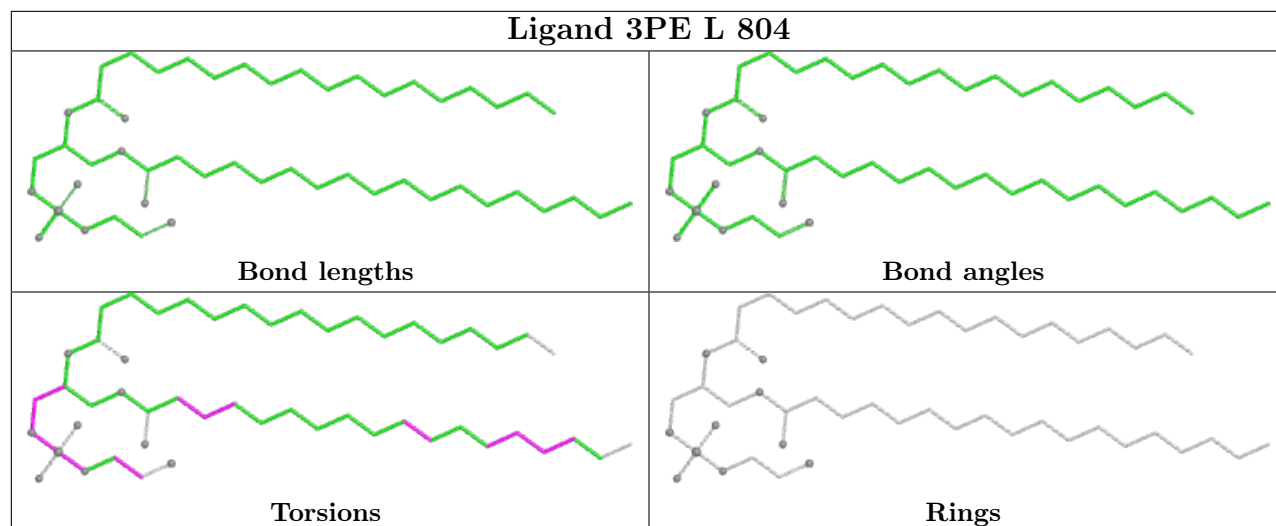












5.7 Other polymers [i](#)

There are no such residues in this entry.

5.8 Polymer linkage issues [i](#)

There are no chain breaks in this entry.

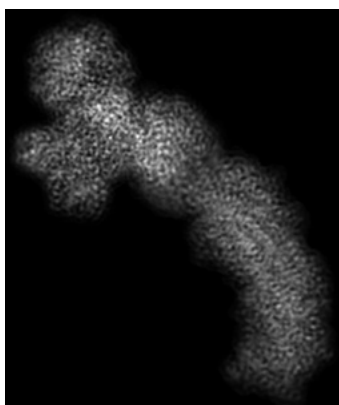
6 Map visualisation [i](#)

This section contains visualisations of the EMDB entry EMD-14632. These allow visual inspection of the internal detail of the map and identification of artifacts.

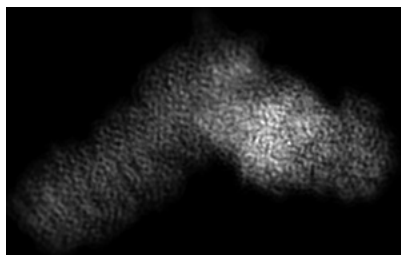
No raw map or half-maps were deposited for this entry and therefore no images, graphs, etc. pertaining to the raw map can be shown.

6.1 Orthogonal projections [i](#)

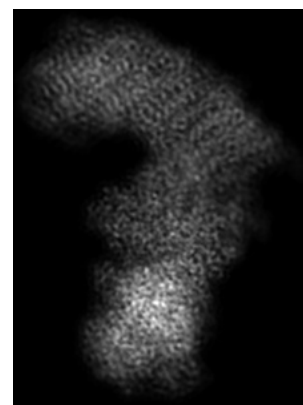
6.1.1 Primary map



X



Y



Z

The images above show the map projected in three orthogonal directions.

6.2 Central slices [i](#)

6.2.1 Primary map



X Index: 72



Y Index: 97

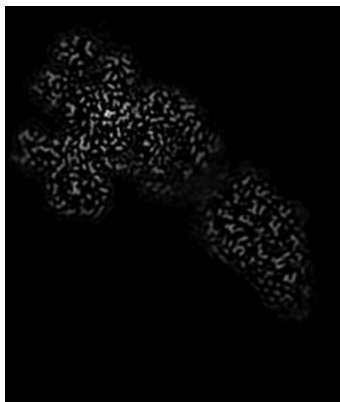


Z Index: 115

The images above show central slices of the map in three orthogonal directions.

6.3 Largest variance slices [i](#)

6.3.1 Primary map



X Index: 77



Y Index: 50



Z Index: 152

The images above show the largest variance slices of the map in three orthogonal directions.

6.4 Orthogonal surface views [i](#)

6.4.1 Primary map



X



Y



Z

The images above show the 3D surface view of the map at the recommended contour level 0.055. These images, in conjunction with the slice images, may facilitate assessment of whether an appropriate contour level has been provided.

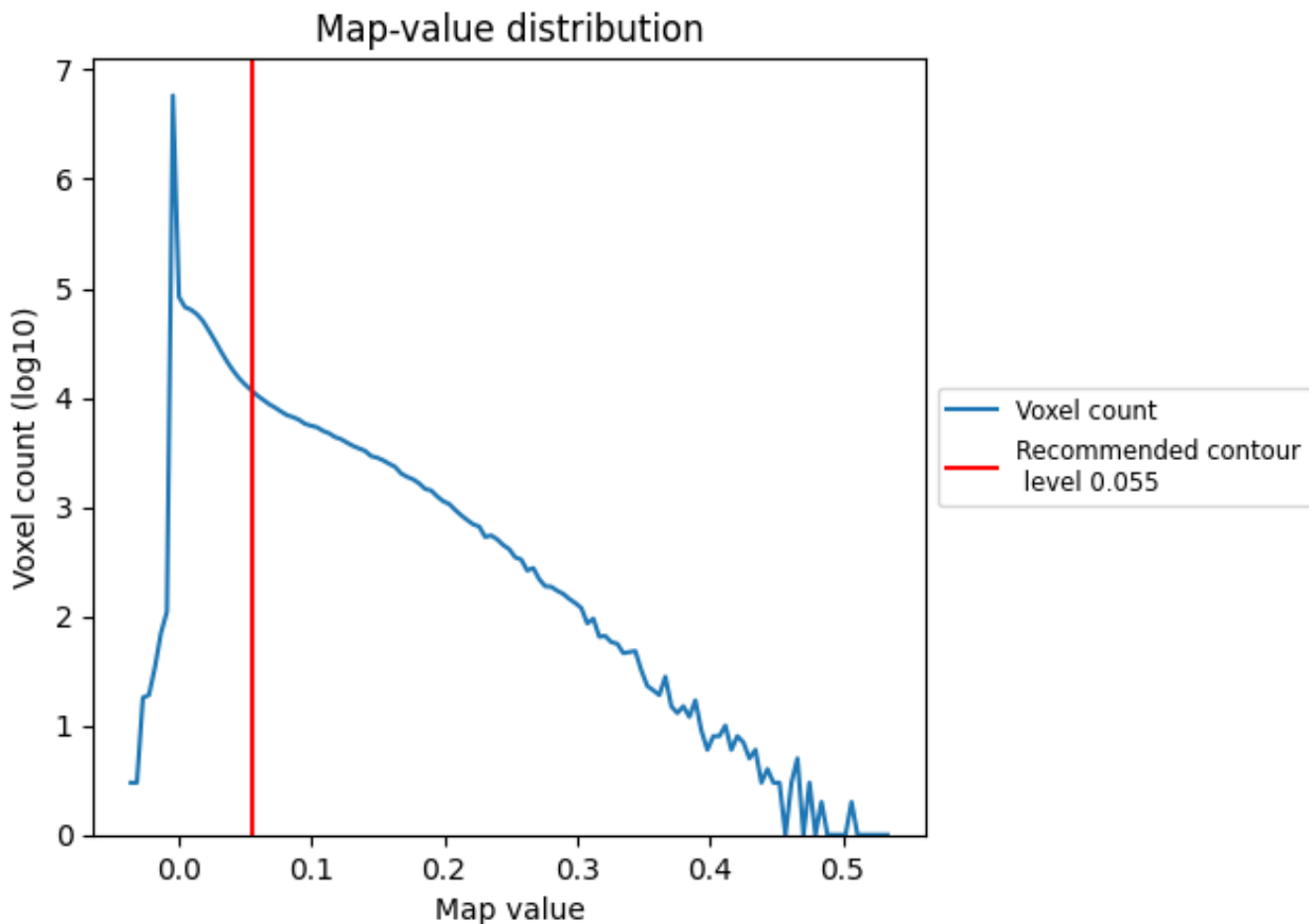
6.5 Mask visualisation

This section was not generated. No masks/segmentation were deposited.

7 Map analysis [i](#)

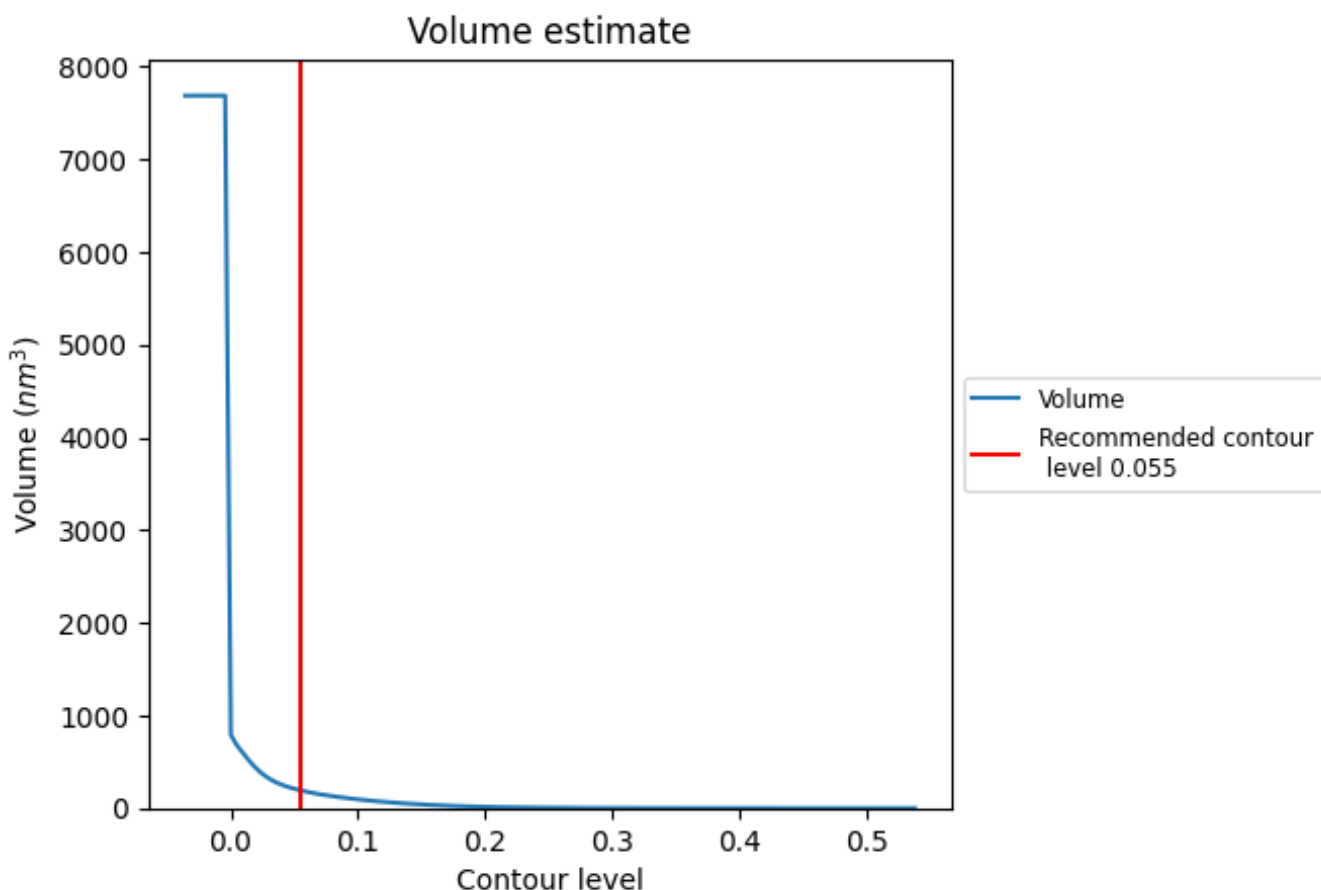
This section contains the results of statistical analysis of the map.

7.1 Map-value distribution [i](#)



The map-value distribution is plotted in 128 intervals along the x-axis. The y-axis is logarithmic. A spike in this graph at zero usually indicates that the volume has been masked.

7.2 Volume estimate [i](#)



The volume at the recommended contour level is 191 nm^3 ; this corresponds to an approximate mass of 173 kDa.

The volume estimate graph shows how the enclosed volume varies with the contour level. The recommended contour level is shown as a vertical line and the intersection between the line and the curve gives the volume of the enclosed surface at the given level.

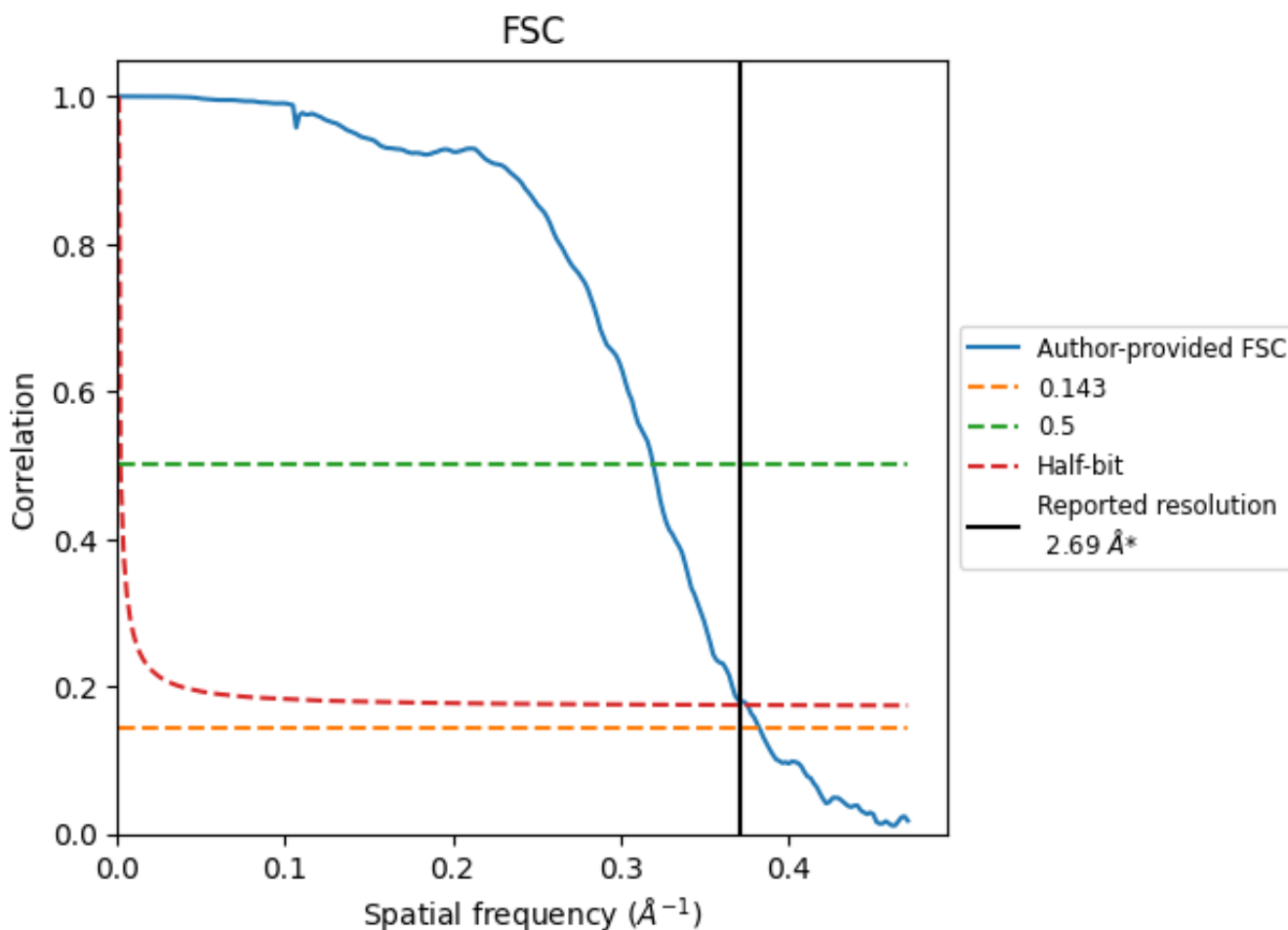
7.3 Rotationally averaged power spectrum [i](#)

This section was not generated. The rotationally averaged power spectrum is only generated for cubic maps.

8 Fourier-Shell correlation [i](#)

Fourier-Shell Correlation (FSC) is the most commonly used method to estimate the resolution of single-particle and subtomogram-averaged maps. The shape of the curve depends on the imposed symmetry, mask and whether or not the two 3D reconstructions used were processed from a common reference. The reported resolution is shown as a black line. A curve is displayed for the half-bit criterion in addition to lines showing the 0.143 gold standard cut-off and 0.5 cut-off.

8.1 FSC [i](#)



*Reported resolution corresponds to spatial frequency of 0.372 Å⁻¹

8.2 Resolution estimates [i](#)

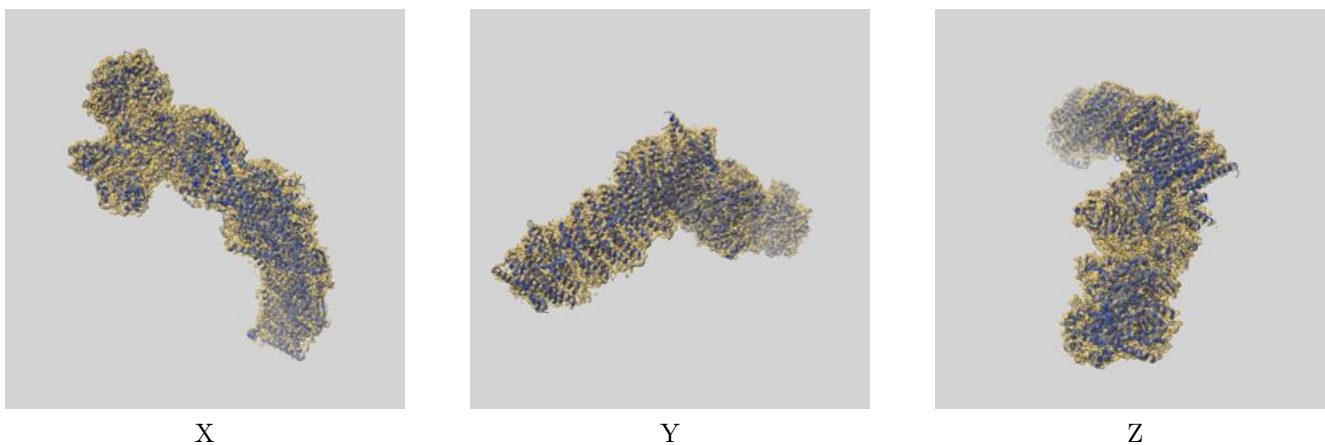
Resolution estimate (Å)	Estimation criterion (FSC cut-off)		
	0.143	0.5	Half-bit
Reported by author	2.69	-	-
Author-provided FSC curve	2.61	3.13	2.66
Unmasked-calculated*	-	-	-

*Resolution estimate based on FSC curve calculated by comparison of deposited half-maps.

9 Map-model fit [i](#)

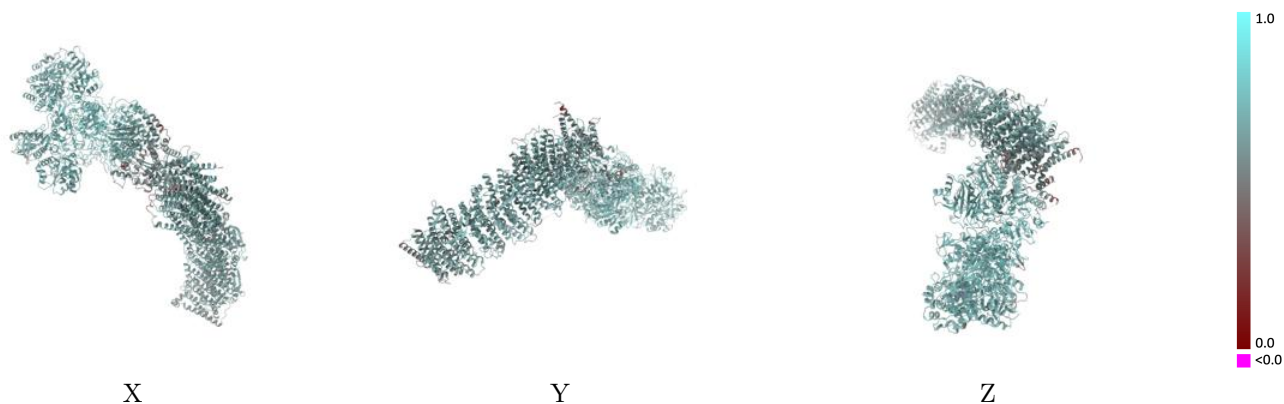
This section contains information regarding the fit between EMDB map EMD-14632 and PDB model 7ZCI. Per-residue inclusion information can be found in section 3 on page 11.

9.1 Map-model overlay [i](#)



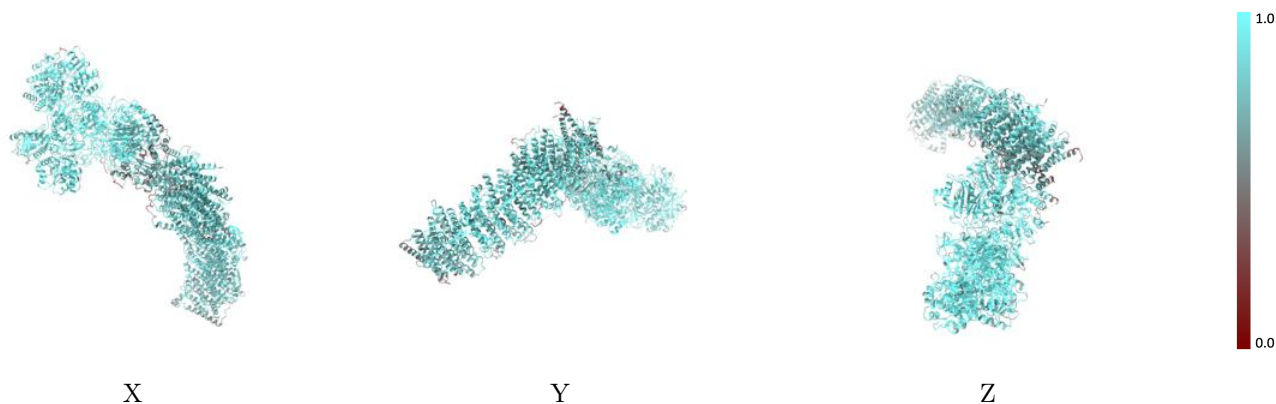
The images above show the 3D surface view of the map at the recommended contour level 0.055 at 50% transparency in yellow overlaid with a ribbon representation of the model coloured in blue. These images allow for the visual assessment of the quality of fit between the atomic model and the map.

9.2 Q-score mapped to coordinate model [i](#)



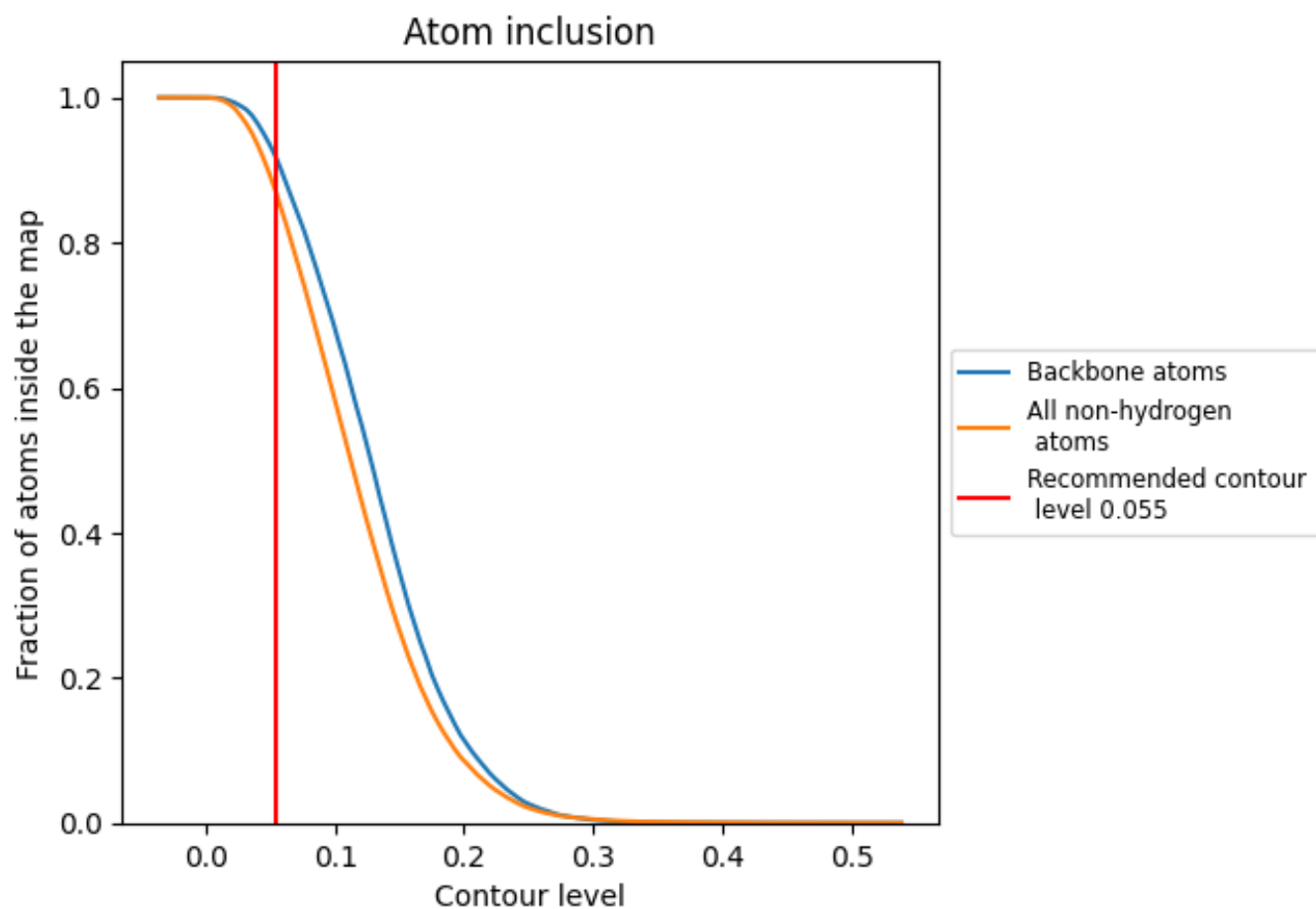
The images above show the model with each residue coloured according to its Q-score. This shows their resolvability in the map with higher Q-score values reflecting better resolvability. Please note: Q-score is calculating the resolvability of atoms, and thus high values are only expected at resolutions at which atoms can be resolved. Low Q-score values may therefore be expected for many entries.

9.3 Atom inclusion mapped to coordinate model [i](#)



The images above show the model with each residue coloured according to its atom inclusion. This shows to what extent they are inside the map at the recommended contour level (0.055).



























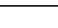
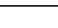
9.4 Atom inclusion [i](#)



At the recommended contour level, 92% of all backbone atoms, 87% of all non-hydrogen atoms, are inside the map.

9.5 Map-model fit summary

The table lists the average atom inclusion at the recommended contour level (0.055) and Q-score for the entire model and for each chain.

Chain	Atom inclusion	Q-score
All	 0.8669	 0.6370
A	 0.7743	 0.5920
B	 0.8588	 0.6180
C	 0.9031	 0.6600
E	 0.9085	 0.6640
F	 0.9265	 0.6650
G	 0.9428	 0.6880
H	 0.7235	 0.5550
I	 0.9525	 0.7040
J	 0.8002	 0.5940
K	 0.9114	 0.6410
L	 0.7694	 0.5900
M	 0.8506	 0.6210
N	 0.8637	 0.6250

