



# Full wwPDB X-ray Structure Validation Report ⓘ

Nov 14, 2023 – 02:35 PM JST

PDB ID : 5Z9T  
Title : a new PL6 alginate lyase complex with trisaccharide  
Authors : Liu, W.Z.; Lyu, Q.Q.; Zhang, K.K.; Li, Z.J.  
Deposited on : 2018-02-05  
Resolution : 1.80 Å(reported)

This is a Full wwPDB X-ray Structure Validation Report for a publicly released PDB entry.

We welcome your comments at [validation@mail.wwpdb.org](mailto:validation@mail.wwpdb.org)

A user guide is available at

<https://www.wwpdb.org/validation/2017/XrayValidationReportHelp>

with specific help available everywhere you see the ⓘ symbol.

The types of validation reports are described at

<http://www.wwpdb.org/validation/2017/FAQs#types>.

---

The following versions of software and data (see [references ⓘ](#)) were used in the production of this report:

MolProbity : 4.02b-467  
Mogul : 1.8.5 (274361), CSD as541be (2020)  
Xtriage (Phenix) : 1.13  
EDS : 2.36  
Percentile statistics : 20191225.v01 (using entries in the PDB archive December 25th 2019)  
Refmac : 5.8.0158  
CCP4 : 7.0.044 (Gargrove)  
Ideal geometry (proteins) : Engh & Huber (2001)  
Ideal geometry (DNA, RNA) : Parkinson et al. (1996)  
Validation Pipeline (wwPDB-VP) : 2.36

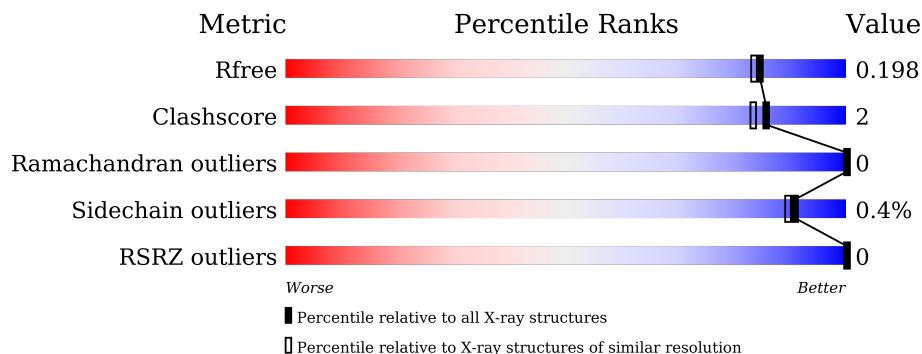
# 1 Overall quality at a glance

The following experimental techniques were used to determine the structure:

*X-RAY DIFFRACTION*

The reported resolution of this entry is 1.80 Å.

Percentile scores (ranging between 0-100) for global validation metrics of the entry are shown in the following graphic. The table shows the number of entries on which the scores are based.



Metric	Whole archive (#Entries)	Similar resolution (#Entries, resolution range(Å))
$R_{free}$	130704	5950 (1.80-1.80)
Clashscore	141614	6793 (1.80-1.80)
Ramachandran outliers	138981	6697 (1.80-1.80)
Sidechain outliers	138945	6696 (1.80-1.80)
RSRZ outliers	127900	5850 (1.80-1.80)

The table below summarises the geometric issues observed across the polymeric chains and their fit to the electron density. The red, orange, yellow and green segments of the lower bar indicate the fraction of residues that contain outliers for  $\geq 3$ , 2, 1 and 0 types of geometric quality criteria respectively. A grey segment represents the fraction of residues that are not modelled. The numeric value for each fraction is indicated below the corresponding segment, with a dot representing fractions  $\leq 5\%$ . The upper red bar (where present) indicates the fraction of residues that have poor fit to the electron density. The numeric value is given above the bar.

Mol	Chain	Length	Quality of chain
1	A	536	 89% 7%
1	B	536	 88% 5% 7%
2	C	3	 67% 33%
2	D	3	 67% 33%

The following table lists non-polymeric compounds, carbohydrate monomers and non-standard residues in protein, DNA, RNA chains that are outliers for geometric or electron-density-fit crite-

ria:

Mol	Type	Chain	Res	Chirality	Geometry	Clashes	Electron density
5	GOL	B	603	-	X	X	-

## 2 Entry composition [i](#)

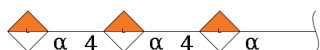
There are 6 unique types of molecules in this entry. The entry contains 8571 atoms, of which 0 are hydrogens and 0 are deuteriums.

In the tables below, the ZeroOcc column contains the number of atoms modelled with zero occupancy, the AltConf column contains the number of residues with at least one atom in alternate conformation and the Trace column contains the number of residues modelled with at most 2 atoms.

- Molecule 1 is a protein called alginate lyase AlyF-OU02.

Mol	Chain	Residues	Atoms					ZeroOcc	AltConf	Trace
			Total	C	N	O	S			
1	A	499	Total 3865	C 2403	N 663	O 793	S 6	0	3	0
1	B	499	Total 3862	C 2402	N 664	O 790	S 6	0	3	0

- Molecule 2 is an oligosaccharide called alpha-L-gulopyranuronic acid-(1-4)-alpha-L-gulopyranuronic acid-(1-4)-alpha-L-gulopyranuronic acid.



Mol	Chain	Residues	Atoms			ZeroOcc	AltConf	Trace
			Total	C	O			
2	C	3	Total 36	C 18	O 18	0	0	0
2	D	3	Total 36	C 18	O 18	0	0	0

- Molecule 3 is SODIUM ION (three-letter code: NA) (formula: Na).

Mol	Chain	Residues	Atoms		ZeroOcc	AltConf
			Total	Na		
3	A	1	Total 1	Na 1	0	0
3	B	1	Total 1	Na 1	0	0

- Molecule 4 is MALONATE ION (three-letter code: MLI) (formula: C<sub>3</sub>H<sub>2</sub>O<sub>4</sub>).



Mol	Chain	Residues	Atoms			ZeroOcc	AltConf
4	A	1	Total	C	O	0	0
			7	3	4		
4	B	1	Total	C	O	0	0
			7	3	4		

- Molecule 5 is GLYCEROL (three-letter code: GOL) (formula:  $C_3H_8O_3$ ).



Mol	Chain	Residues	Atoms			ZeroOcc	AltConf
5	B	1	Total	C	O	0	0
			6	3	3		


- Molecule 6 is water.

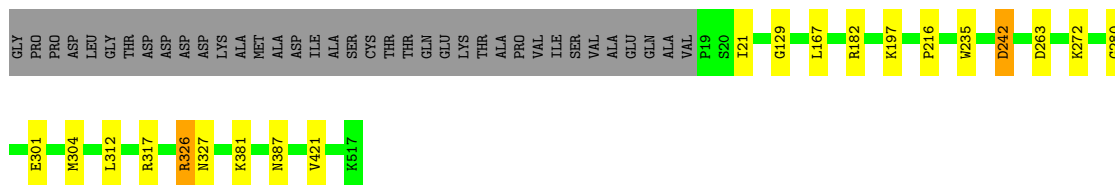
Mol	Chain	Residues	Atoms		ZeroOcc	AltConf
6	A	369	Total 369	O 369	0	0
6	B	381	Total 381	O 381	0	0

### 3 Residue-property plots [i](#)


These plots are drawn for all protein, RNA, DNA and oligosaccharide chains in the entry. The first graphic for a chain summarises the proportions of the various outlier classes displayed in the second graphic. The second graphic shows the sequence view annotated by issues in geometry and electron density. Residues are color-coded according to the number of geometric quality criteria for which they contain at least one outlier: green = 0, yellow = 1, orange = 2 and red = 3 or more. A red dot above a residue indicates a poor fit to the electron density ( $RSRZ > 2$ ). Stretches of 2 or more consecutive residues without any outlier are shown as a green connector. Residues present in the sample, but not in the model, are shown in grey.

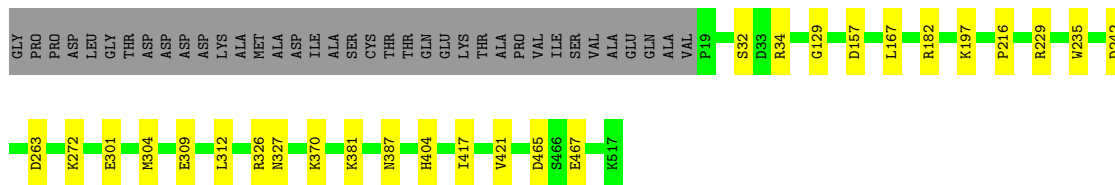
- Molecule 1: alginate lyase AlyF-OU02

Chain A:  89% 7%




- Molecule 1: alginate lyase AlyF-OU02

Chain B:  88% 5% 7%



- Molecule 2: alpha-L-gulopyranuronic acid-(1-4)-alpha-L-gulopyranuronic acid-(1-4)-alpha-L-gulopyranuronic acid

Chain C:  67% 33%



- Molecule 2: alpha-L-gulopyranuronic acid-(1-4)-alpha-L-gulopyranuronic acid-(1-4)-alpha-L-gulopyranuronic acid

Chain D:  67% 33%



## 4 Data and refinement statistics

Property	Value	Source
Space group	P 31	Depositor
Cell constants a, b, c, $\alpha$ , $\beta$ , $\gamma$	106.09Å 106.09Å 101.89Å 90.00° 90.00° 120.00°	Depositor
Resolution (Å)	50.00 – 1.80 25.48 – 1.80	Depositor EDS
% Data completeness (in resolution range)	99.8 (50.00-1.80) 99.9 (25.48-1.80)	Depositor EDS
$R_{merge}$	(Not available)	Depositor
$R_{sym}$	(Not available)	Depositor
$\langle I/\sigma(I) \rangle$ <sup>1</sup>	2.82 (at 1.80Å)	Xtriage
Refinement program	REFMAC 5.8.0049	Depositor
R, $R_{free}$	0.165 , 0.196 0.167 , 0.198	Depositor DCC
$R_{free}$ test set	5945 reflections (5.01%)	wwPDB-VP
Wilson B-factor (Å <sup>2</sup> )	23.1	Xtriage
Anisotropy	0.008	Xtriage
Bulk solvent $k_{sol}$ (e/Å <sup>3</sup> ), $B_{sol}$ (Å <sup>2</sup> )	0.38 , 34.1	EDS
L-test for twinning <sup>2</sup>	$\langle  L  \rangle = 0.50$ , $\langle L^2 \rangle = 0.33$	Xtriage
Estimated twinning fraction	0.479 for -h,-k,l 0.034 for h,-h-k,-l 0.034 for -k,-h,-l	Xtriage
$F_o, F_c$ correlation	0.97	EDS
Total number of atoms	8571	wwPDB-VP
Average B, all atoms (Å <sup>2</sup> )	25.0	wwPDB-VP

Xtriage's analysis on translational NCS is as follows: *The largest off-origin peak in the Patterson function is 3.33% of the height of the origin peak. No significant pseudotranslation is detected.*

<sup>1</sup>Intensities estimated from amplitudes.

<sup>2</sup>Theoretical values of  $\langle |L| \rangle$ ,  $\langle L^2 \rangle$  for acentric reflections are 0.5, 0.333 respectively for untwinned datasets, and 0.375, 0.2 for perfectly twinned datasets.



## 5 Model quality [i](#)

### 5.1 Standard geometry [i](#)

Bond lengths and bond angles in the following residue types are not validated in this section: LGU, NA, GOL, MLI

The Z score for a bond length (or angle) is the number of standard deviations the observed value is removed from the expected value. A bond length (or angle) with  $|Z| > 5$  is considered an outlier worth inspection. RMSZ is the root-mean-square of all Z scores of the bond lengths (or angles).

Mol	Chain	Bond lengths		Bond angles	
		RMSZ	# $ Z  > 5$	RMSZ	# $ Z  > 5$
1	A	0.83	0/3931	0.90	6/5340 (0.1%)
1	B	0.81	1/3928 (0.0%)	0.88	5/5334 (0.1%)
All	All	0.82	1/7859 (0.0%)	0.89	11/10674 (0.1%)

All (1) bond length outliers are listed below:

Mol	Chain	Res	Type	Atoms	Z	Observed(Å)	Ideal(Å)
1	B	309	GLU	CD-OE2	-5.34	1.19	1.25

All (11) bond angle outliers are listed below:

Mol	Chain	Res	Type	Atoms	Z	Observed(°)	Ideal(°)
1	A	304	MET	CG-SD-CE	-14.25	77.39	100.20
1	B	304	MET	CG-SD-CE	-6.92	89.12	100.20
1	B	182	ARG	NE-CZ-NH2	-5.65	117.47	120.30
1	A	326	ARG	NE-CZ-NH1	-5.56	117.52	120.30
1	A	242	ASP	CB-CG-OD1	5.43	123.19	118.30
1	A	182	ARG	NE-CZ-NH2	-5.36	117.62	120.30
1	B	157	ASP	CB-CG-OD1	5.26	123.04	118.30
1	A	263	ASP	CB-CG-OD1	5.22	123.00	118.30
1	B	263	ASP	CB-CG-OD1	5.20	122.98	118.30
1	B	229	ARG	NE-CZ-NH1	5.19	122.89	120.30
1	A	317	ARG	NE-CZ-NH1	5.06	122.83	120.30

There are no chirality outliers.

There are no planarity outliers.

## 5.2 Too-close contacts

In the following table, the Non-H and H(model) columns list the number of non-hydrogen atoms and hydrogen atoms in the chain respectively. The H(added) column lists the number of hydrogen atoms added and optimized by MolProbity. The Clashes column lists the number of clashes within the asymmetric unit, whereas Symm-Clashes lists symmetry-related clashes.

Mol	Chain	Non-H	H(model)	H(added)	Clashes	Symm-Clashes
1	A	3865	0	3664	14	0
1	B	3862	0	3669	19	0
2	C	36	0	18	3	0
2	D	36	0	18	2	0
3	A	1	0	0	0	0
3	B	1	0	0	0	0
4	A	7	0	2	0	0
4	B	7	0	2	0	0
5	B	6	0	6	11	0
6	A	369	0	0	0	0
6	B	381	0	0	0	0
All	All	8571	0	7379	33	0

The all-atom clashscore is defined as the number of clashes found per 1000 atoms (including hydrogen atoms). The all-atom clashscore for this structure is 2.

All (33) close contacts within the same asymmetric unit are listed below, sorted by their clash magnitude.

Atom-1	Atom-2	Interatomic distance (Å)	Clash overlap (Å)
1:A:280:GLY:HA3	5:B:603:GOL:H12	1.42	1.00
1:A:280:GLY:HA3	5:B:603:GOL:C1	1.96	0.93
1:B:465:ASP:OD1	5:B:603:GOL:H2	1.78	0.82
1:B:465:ASP:HA	5:B:603:GOL:H31	1.72	0.70
1:B:272:LYS:NZ	2:D:3:LGU:H5	2.10	0.66
1:B:465:ASP:OD1	5:B:603:GOL:C2	2.45	0.65
1:A:272:LYS:NZ	2:C:3:LGU:H5	2.14	0.63
1:B:465:ASP:HA	5:B:603:GOL:H2	1.81	0.62
1:A:280:GLY:HA3	5:B:603:GOL:H11	1.82	0.59
1:B:467:GLU:OE1	5:B:603:GOL:H32	2.09	0.53
1:A:242:ASP:HA	1:A:272:LYS:HD3	1.95	0.49
1:B:465:ASP:HA	5:B:603:GOL:C3	2.42	0.49
1:B:272:LYS:H2	2:D:3:LGU:H5	1.78	0.48
1:B:301:GLU:HA	1:B:326:ARG:O	2.15	0.47
1:B:467:GLU:OE1	5:B:603:GOL:C3	2.63	0.47
1:B:242:ASP:HA	1:B:272:LYS:HD3	1.97	0.47

*Continued on next page...*

Continued from previous page...

Atom-1	Atom-2	Interatomic distance (Å)	Clash overlap (Å)
1:B:381:LYS:HA	1:B:421:VAL:O	2.15	0.46
1:A:327:ASN:HA	1:A:387:ASN:O	2.15	0.46
1:B:327:ASN:HA	1:B:387:ASN:O	2.16	0.46
1:A:381:LYS:HA	1:A:421:VAL:O	2.16	0.45
1:A:21:ILE:HD13	1:A:21:ILE:HA	1.87	0.45
1:B:404:HIS:HD2	1:B:417:ILE:HD12	1.83	0.44
1:A:129:GLY:HA2	1:A:167:LEU:O	2.17	0.44
1:B:129:GLY:HA2	1:B:167:LEU:O	2.18	0.43
1:A:312:LEU:HD23	1:A:312:LEU:HA	1.92	0.42
1:A:272:LYS:HZ2	2:C:3:LGU:H5	1.85	0.42
1:B:216:PRO:HA	1:B:235:TRP:CZ3	2.55	0.42
1:A:301:GLU:HA	1:A:326:ARG:O	2.20	0.41
1:B:32:SER:OG	1:B:34:ARG:HG2	2.20	0.41
1:A:216:PRO:HA	1:A:235:TRP:CZ3	2.55	0.41
1:A:272:LYS:HZ1	2:C:3:LGU:H5	1.83	0.41
1:B:312:LEU:HD23	1:B:312:LEU:HA	1.89	0.41
1:B:465:ASP:OD1	5:B:603:GOL:O2	2.39	0.40

There are no symmetry-related clashes.

## 5.3 Torsion angles [i](#)

### 5.3.1 Protein backbone [i](#)

In the following table, the Percentiles column shows the percent Ramachandran outliers of the chain as a percentile score with respect to all X-ray entries followed by that with respect to entries of similar resolution.

The Analysed column shows the number of residues for which the backbone conformation was analysed, and the total number of residues.

Mol	Chain	Analysed	Favoured	Allowed	Outliers	Percentiles	
1	A	500/536 (93%)	484 (97%)	16 (3%)	0	100	100
1	B	500/536 (93%)	485 (97%)	15 (3%)	0	100	100
All	All	1000/1072 (93%)	969 (97%)	31 (3%)	0	100	100

There are no Ramachandran outliers to report.

### 5.3.2 Protein sidechains [i](#)

In the following table, the Percentiles column shows the percent sidechain outliers of the chain as a percentile score with respect to all X-ray entries followed by that with respect to entries of similar resolution.

The Analysed column shows the number of residues for which the sidechain conformation was analysed, and the total number of residues.

Mol	Chain	Analysed	Rotameric	Outliers	Percentiles	
1	A	415/454 (91%)	414 (100%)	1 (0%)	93	92
1	B	415/454 (91%)	413 (100%)	2 (0%)	88	87
All	All	830/908 (91%)	827 (100%)	3 (0%)	91	89

All (3) residues with a non-rotameric sidechain are listed below:

Mol	Chain	Res	Type
1	A	197	LYS
1	B	197	LYS
1	B	370	LYS

Sometimes sidechains can be flipped to improve hydrogen bonding and reduce clashes. There are no such sidechains identified.

### 5.3.3 RNA [i](#)

There are no RNA molecules in this entry.

## 5.4 Non-standard residues in protein, DNA, RNA chains [i](#)

There are no non-standard protein/DNA/RNA residues in this entry.

## 5.5 Carbohydrates [i](#)

6 monosaccharides are modelled in this entry.

In the following table, the Counts columns list the number of bonds (or angles) for which Mogul statistics could be retrieved, the number of bonds (or angles) that are observed in the model and the number of bonds (or angles) that are defined in the Chemical Component Dictionary. The Link column lists molecule types, if any, to which the group is linked. The Z score for a bond length (or angle) is the number of standard deviations the observed value is removed from the expected value. A bond length (or angle) with  $|Z| > 2$  is considered an outlier worth inspection. RMSZ is the root-mean-square of all Z scores of the bond lengths (or angles).

Mol	Type	Chain	Res	Link	Bond lengths			Bond angles		
					Counts	RMSZ	# Z  > 2	Counts	RMSZ	# Z  > 2
2	LGU	C	1	2	13,13,13	0.76	0	18,19,19	2.67	6 (33%)
2	LGU	C	2	2	12,12,13	1.06	0	14,17,19	1.20	1 (7%)
2	LGU	C	3	2,3	11,11,13	1.26	1 (9%)	12,15,19	1.35	2 (16%)
2	LGU	D	1	2	13,13,13	0.74	0	18,19,19	2.51	4 (22%)
2	LGU	D	2	2	12,12,13	1.10	0	14,17,19	1.16	1 (7%)
2	LGU	D	3	2,3	11,11,13	1.27	1 (9%)	12,15,19	1.32	2 (16%)

In the following table, the Chirals column lists the number of chiral outliers, the number of chiral centers analysed, the number of these observed in the model and the number defined in the Chemical Component Dictionary. Similar counts are reported in the Torsion and Rings columns. '-' means no outliers of that kind were identified.

Mol	Type	Chain	Res	Link	Chirals	Torsions	Rings
2	LGU	C	1	2	-	0/4/24/24	0/1/1/1
2	LGU	C	2	2	-	0/4/21/24	0/1/1/1
2	LGU	C	3	2,3	-	0/4/17/24	0/1/1/1
2	LGU	D	1	2	-	0/4/24/24	0/1/1/1
2	LGU	D	2	2	-	0/4/21/24	0/1/1/1
2	LGU	D	3	2,3	-	0/4/17/24	0/1/1/1

All (2) bond length outliers are listed below:

Mol	Chain	Res	Type	Atoms	Z	Observed(Å)	Ideal(Å)
2	C	3	LGU	C3-C2	2.61	1.56	1.52
2	D	3	LGU	C4-C3	2.14	1.56	1.52

All (16) bond angle outliers are listed below:

Mol	Chain	Res	Type	Atoms	Z	Observed(°)	Ideal(°)
2	D	1	LGU	C1-O5-C5	6.19	121.33	112.22
2	C	1	LGU	O5-C1-C2	6.07	121.12	110.28
2	D	1	LGU	O5-C1-C2	5.63	120.33	110.28
2	C	1	LGU	C1-O5-C5	5.50	120.31	112.22
2	C	1	LGU	O1-C1-C2	4.90	122.83	109.03
2	D	1	LGU	O1-C1-C2	3.84	119.85	109.03
2	C	2	LGU	C1-C2-C3	3.46	113.92	109.67
2	D	1	LGU	C1-C2-C3	3.29	117.14	110.31
2	C	1	LGU	C1-C2-C3	3.21	116.98	110.31
2	C	1	LGU	O5-C5-C4	2.98	114.90	109.57
2	D	2	LGU	C1-C2-C3	2.76	113.06	109.67
2	D	3	LGU	O6A-C6-C5	-2.76	116.05	122.57

*Continued on next page...*

Continued from previous page...

Mol	Chain	Res	Type	Atoms	Z	Observed(°)	Ideal(°)
2	C	3	LGU	O6A-C6-C5	-2.52	116.62	122.57
2	D	3	LGU	O6B-C6-C5	2.44	119.99	113.03
2	C	3	LGU	O6B-C6-C5	2.23	119.39	113.03
2	C	1	LGU	O2-C2-C3	2.12	115.24	110.35

There are no chirality outliers.

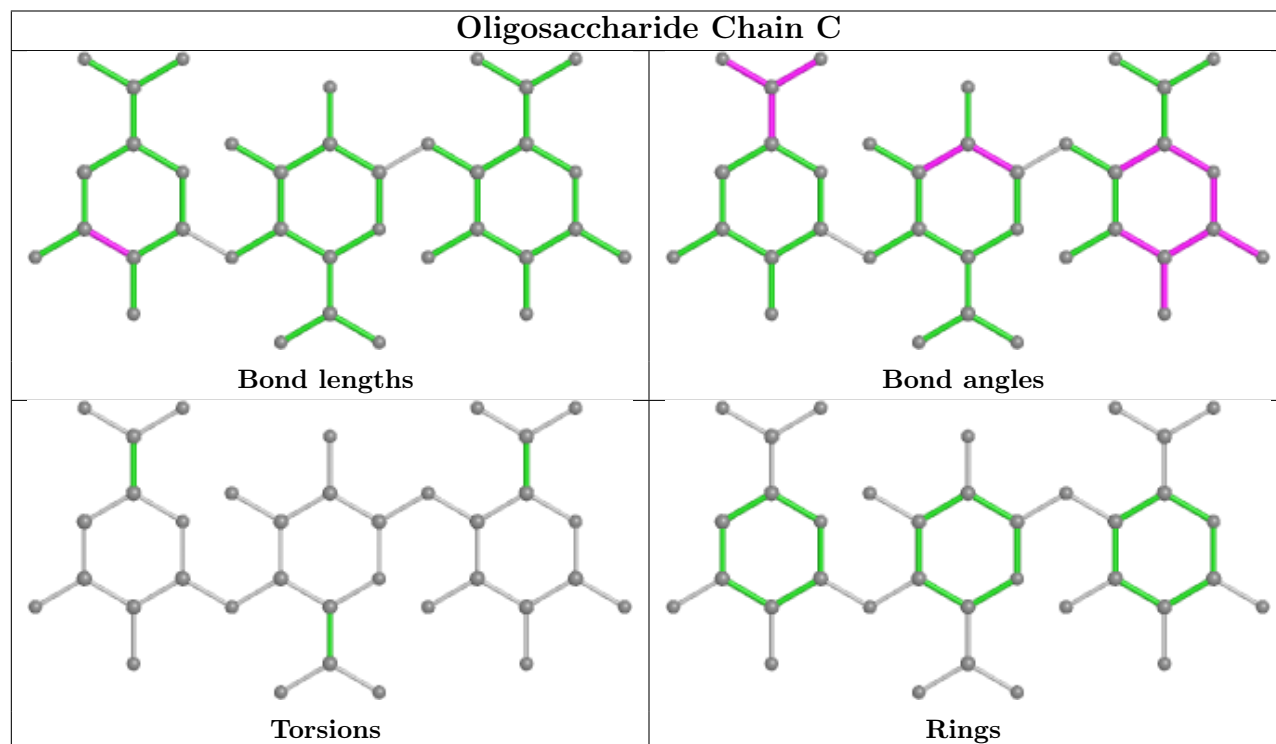
There are no torsion outliers.

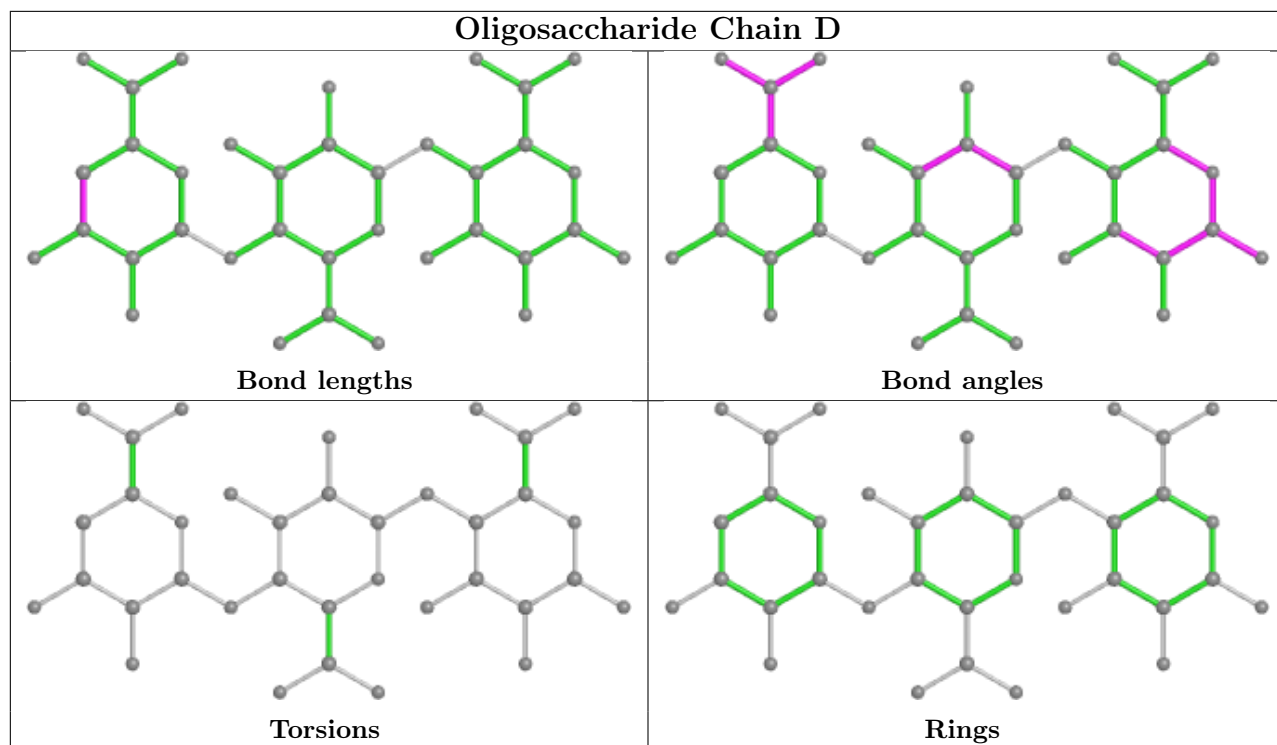
There are no ring outliers.

2 monomers are involved in 5 short contacts:

Mol	Chain	Res	Type	Clashes	Symm-Clashes
2	C	3	LGU	3	0
2	D	3	LGU	2	0

The following is a two-dimensional graphical depiction of Mogul quality analysis of bond lengths, bond angles, torsion angles, and ring geometry for oligosaccharide.





## 5.6 Ligand geometry [i](#)

Of 5 ligands modelled in this entry, 2 are monoatomic - leaving 3 for Mogul analysis.

In the following table, the Counts columns list the number of bonds (or angles) for which Mogul statistics could be retrieved, the number of bonds (or angles) that are observed in the model and the number of bonds (or angles) that are defined in the Chemical Component Dictionary. The Link column lists molecule types, if any, to which the group is linked. The Z score for a bond length (or angle) is the number of standard deviations the observed value is removed from the expected value. A bond length (or angle) with  $|Z| > 2$  is considered an outlier worth inspection. RMSZ is the root-mean-square of all Z scores of the bond lengths (or angles).

Mol	Type	Chain	Res	Link	Bond lengths			Bond angles		
					Counts	RMSZ	# Z  > 2	Counts	RMSZ	# Z  > 2
4	MLI	A	602	-	6,6,6	1.25	0	7,7,7	1.46	1 (14%)
5	GOL	B	603	-	5,5,5	1.57	1 (20%)	5,5,5	1.55	1 (20%)
4	MLI	B	602	-	6,6,6	1.15	0	7,7,7	1.33	1 (14%)

In the following table, the Chirals column lists the number of chiral outliers, the number of chiral centers analysed, the number of these observed in the model and the number defined in the Chemical Component Dictionary. Similar counts are reported in the Torsion and Rings columns. '-' means no outliers of that kind were identified.

Mol	Type	Chain	Res	Link	Chirals	Torsions	Rings
4	MLI	A	602	-	-	2/4/4/4	-
5	GOL	B	603	-	-	4/4/4/4	-
4	MLI	B	602	-	-	2/4/4/4	-

All (1) bond length outliers are listed below:

Mol	Chain	Res	Type	Atoms	Z	Observed(Å)	Ideal(Å)
5	B	603	GOL	O1-C1	-2.35	1.32	1.42

All (3) bond angle outliers are listed below:

Mol	Chain	Res	Type	Atoms	Z	Observed(°)	Ideal(°)
4	B	602	MLI	O7-C2-C1	2.29	121.86	114.54
4	A	602	MLI	O7-C2-C1	2.26	121.75	114.54
5	B	603	GOL	O2-C2-C3	2.10	118.37	109.12

There are no chirality outliers.

All (8) torsion outliers are listed below:

Mol	Chain	Res	Type	Atoms
5	B	603	GOL	O1-C1-C2-O2
5	B	603	GOL	O1-C1-C2-C3
5	B	603	GOL	C1-C2-C3-O3
4	A	602	MLI	C3-C1-C2-O7
4	A	602	MLI	C3-C1-C2-O6
4	B	602	MLI	C3-C1-C2-O7
5	B	603	GOL	O2-C2-C3-O3
4	B	602	MLI	C3-C1-C2-O6

There are no ring outliers.

1 monomer is involved in 11 short contacts:

Mol	Chain	Res	Type	Clashes	Symm-Clashes
5	B	603	GOL	11	0

## 5.7 Other polymers [i](#)

There are no such residues in this entry.



## 5.8 Polymer linkage issues

There are no chain breaks in this entry.

## 6 Fit of model and data [i](#)

### 6.1 Protein, DNA and RNA chains [i](#)

In the following table, the column labelled ‘#RSRZ > 2’ contains the number (and percentage) of RSRZ outliers, followed by percent RSRZ outliers for the chain as percentile scores relative to all X-ray entries and entries of similar resolution. The OWAB column contains the minimum, median, 95<sup>th</sup> percentile and maximum values of the occupancy-weighted average B-factor per residue. The column labelled ‘Q < 0.9’ lists the number of (and percentage) of residues with an average occupancy less than 0.9.

Mol	Chain	Analysed	<RSRZ>	#RSRZ>2	OWAB(Å <sup>2</sup> )	Q<0.9
1	A	499/536 (93%)	-0.79	0 100 100	15, 22, 42, 59	0
1	B	499/536 (93%)	-0.80	0 100 100	15, 22, 43, 59	0
All	All	998/1072 (93%)	-0.80	0 100 100	15, 22, 43, 59	0

There are no RSRZ outliers to report.

### 6.2 Non-standard residues in protein, DNA, RNA chains [i](#)

There are no non-standard protein/DNA/RNA residues in this entry.

### 6.3 Carbohydrates [i](#)

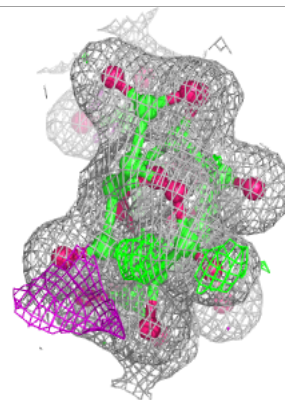
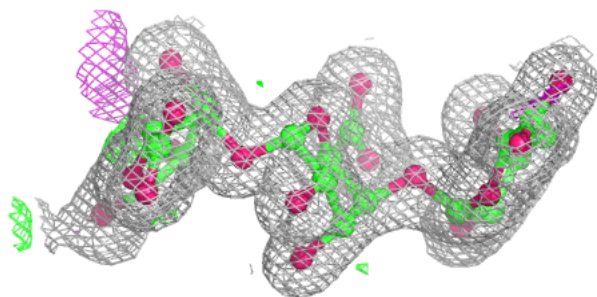
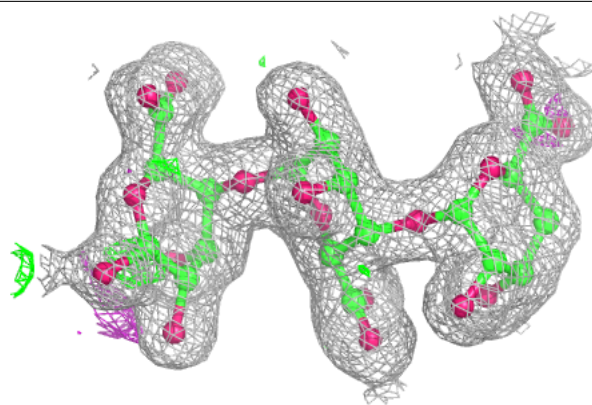
In the following table, the Atoms column lists the number of modelled atoms in the group and the number defined in the chemical component dictionary. The B-factors column lists the minimum, median, 95<sup>th</sup> percentile and maximum values of B factors of atoms in the group. The column labelled ‘Q < 0.9’ lists the number of atoms with occupancy less than 0.9.

Mol	Type	Chain	Res	Atoms	RSCC	RSR	B-factors(Å <sup>2</sup> )	Q<0.9
2	LGU	C	3	11/13	0.96	0.07	21,22,23,23	0
2	LGU	C	1	13/13	0.97	0.07	20,21,25,26	0
2	LGU	D	1	13/13	0.97	0.06	20,21,25,26	0
2	LGU	D	3	11/13	0.97	0.07	20,21,22,23	0
2	LGU	C	2	12/13	0.98	0.05	20,21,22,23	0
2	LGU	D	2	12/13	0.99	0.05	20,21,22,23	0

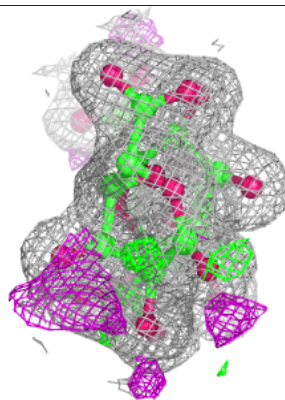
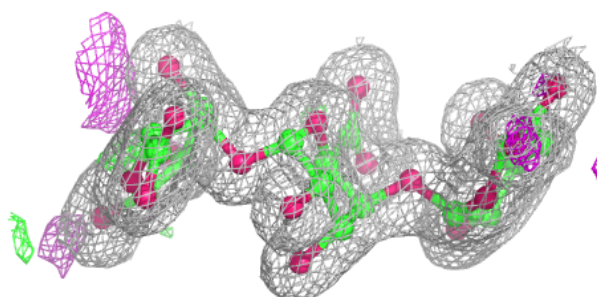
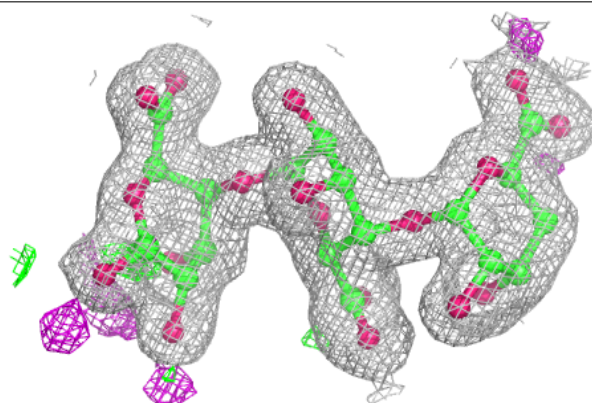
The following is a graphical depiction of the model fit to experimental electron density for oligosaccharide. Each fit is shown from different orientation to approximate a three-dimensional view.

**Electron density around Chain C:**

$2mF_o-DF_c$  (at 0.7 rmsd) in gray  
 $mF_o-DF_c$  (at 3 rmsd) in purple (negative)  
and green (positive)

**Electron density around Chain D:**

$2mF_o-DF_c$  (at 0.7 rmsd) in gray  
 $mF_o-DF_c$  (at 3 rmsd) in purple (negative)  
and green (positive)



## 6.4 Ligands [i](#)

In the following table, the Atoms column lists the number of modelled atoms in the group and the number defined in the chemical component dictionary. The B-factors column lists the minimum, median, 95<sup>th</sup> percentile and maximum values of B factors of atoms in the group. The column labelled 'Q< 0.9' lists the number of atoms with occupancy less than 0.9.

Mol	Type	Chain	Res	Atoms	RSCC	RSR	B-factors(Å <sup>2</sup> )	Q<0.9
5	GOL	B	603	6/6	0.93	0.16	15,25,28,31	0
4	MLI	B	602	7/7	0.96	0.09	25,29,32,35	0
4	MLI	A	602	7/7	0.96	0.10	24,29,34,37	0
3	NA	B	601	1/1	0.99	0.06	19,19,19,19	0
3	NA	A	601	1/1	0.99	0.06	19,19,19,19	0

## 6.5 Other polymers [i](#)

There are no such residues in this entry.