



# Full wwPDB X-ray Structure Validation Report ⓘ

Nov 26, 2024 – 06:10 PM JST

PDB ID : 8YX2  
Title : Crystal Structure of SARS CoV-2 Papain-like Protease PLpro-C111S in Complex with GZNL-P4  
Authors : Lu, Y.; Shang, J.  
Deposited on : 2024-04-02  
Resolution : 2.31 Å(reported)

This is a Full wwPDB X-ray Structure Validation Report for a publicly released PDB entry.

We welcome your comments at [validation@mail.wwpdb.org](mailto:validation@mail.wwpdb.org)

A user guide is available at

<https://www.wwpdb.org/validation/2017/XrayValidationReportHelp>

with specific help available everywhere you see the ⓘ symbol.

The types of validation reports are described at

<http://www.wwpdb.org/validation/2017/FAQs#types>.

---

The following versions of software and data (see [references ⓘ](#)) were used in the production of this report:

MolProbity : 4.02b-467  
Mogul : 1.8.5 (274361), CSD as541be (2020)  
Xtriage (Phenix) : 1.21  
EDS : 3.0  
buster-report : 1.1.7 (2018)  
Percentile statistics : 20231227.v01 (using entries in the PDB archive December 27th 2023)  
CCP4 : 9.0.004 (Gargrove)  
Density-Fitness : 1.0.11  
Ideal geometry (proteins) : Engh & Huber (2001)  
Ideal geometry (DNA, RNA) : Parkinson et al. (1996)  
Validation Pipeline (wwPDB-VP) : 2.40

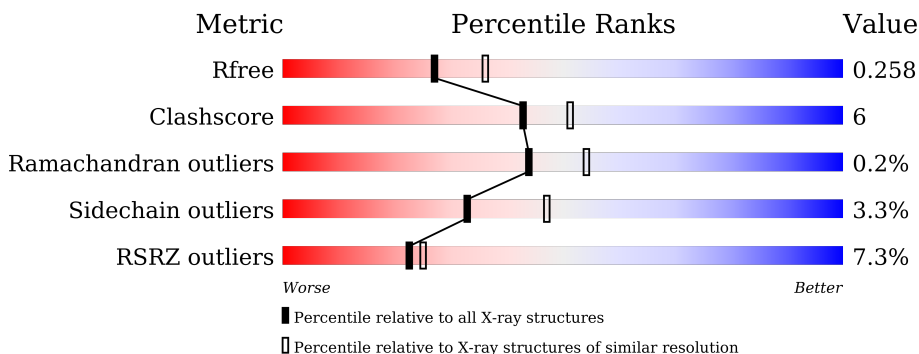
# 1 Overall quality at a glance

The following experimental techniques were used to determine the structure:

*X-RAY DIFFRACTION*

The reported resolution of this entry is 2.31 Å.

Percentile scores (ranging between 0-100) for global validation metrics of the entry are shown in the following graphic. The table shows the number of entries on which the scores are based.



Metric	Whole archive (#Entries)	Similar resolution (#Entries, resolution range(Å))
$R_{free}$	164625	7250 (2.34-2.30)
Clashscore	180529	8063 (2.34-2.30)
Ramachandran outliers	177936	7993 (2.34-2.30)
Sidechain outliers	177891	7993 (2.34-2.30)
RSRZ outliers	164620	7250 (2.34-2.30)

The table below summarises the geometric issues observed across the polymeric chains and their fit to the electron density. The red, orange, yellow and green segments of the lower bar indicate the fraction of residues that contain outliers for  $\geq 3$ , 2, 1 and 0 types of geometric quality criteria respectively. A grey segment represents the fraction of residues that are not modelled. The numeric value for each fraction is indicated below the corresponding segment, with a dot representing fractions  $\leq 5\%$ . The upper red bar (where present) indicates the fraction of residues that have poor fit to the electron density. The numeric value is given above the bar.

Mol	Chain	Length	Quality of chain
1	A	316	 6% 84% 14% ..
1	B	316	 9% 83% 15% ..

## 2 Entry composition [i](#)

There are 4 unique types of molecules in this entry. The entry contains 10009 atoms, of which 4782 are hydrogens and 0 are deuteriums.

In the tables below, the ZeroOcc column contains the number of atoms modelled with zero occupancy, the AltConf column contains the number of residues with at least one atom in alternate conformation and the Trace column contains the number of residues modelled with at most 2 atoms.

- Molecule 1 is a protein called Papain-like protease nsp3.

Mol	Chain	Residues	Atoms					ZeroOcc	AltConf	Trace	
			Total	C	H	N	O				S
1	B	313	4869	1580	2387	409	476	17	0	0	0
1	A	314	4887	1586	2395	411	477	18	0	0	0

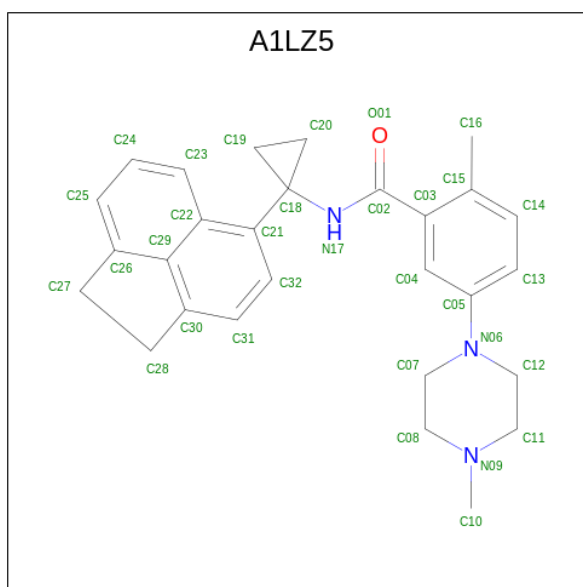
There are 4 discrepancies between the modelled and reference sequences:

Chain	Residue	Modelled	Actual	Comment	Reference
B	0	GLY	-	expression tag	UNP P0DTD1
B	111	SER	CYS	engineered mutation	UNP P0DTD1
A	0	GLY	-	expression tag	UNP P0DTD1
A	111	SER	CYS	engineered mutation	UNP P0DTD1

- Molecule 2 is ZINC ION (three-letter code: ZN) (formula: Zn).

Mol	Chain	Residues	Atoms		ZeroOcc	AltConf
2	B	2	Total	Zn	0	0
			2	2		
2	A	2	Total	Zn	0	0
			2	2		

- Molecule 3 is {N}-[1-(1,2-dihydroacenaphthylen-5-yl)cyclopropyl]-2-methyl-5-(4-methylpiperazin-1-yl)benzamide (three-letter code: A1LZ5) (formula: C<sub>28</sub>H<sub>31</sub>N<sub>3</sub>O) (labeled as "Ligand of Interest" by depositor).



Mol	Chain	Residues	Atoms				ZeroOcc	AltConf
3	B	1	Total	C	N	O	0	0
			32	28	3	1		
3	A	1	Total	C	N	O	0	0
			32	28	3	1		

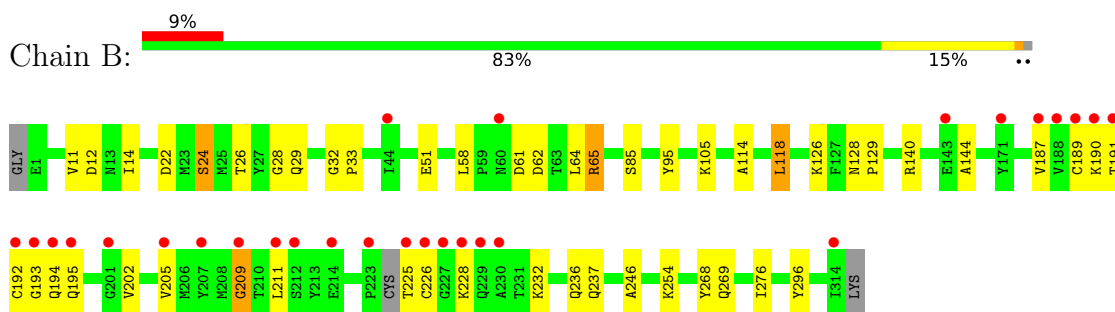
- Molecule 4 is water.

Mol	Chain	Residues	Atoms		ZeroOcc	AltConf
4	B	84	Total	O	0	0
			84	84		
4	A	101	Total	O	0	0
			101	101		

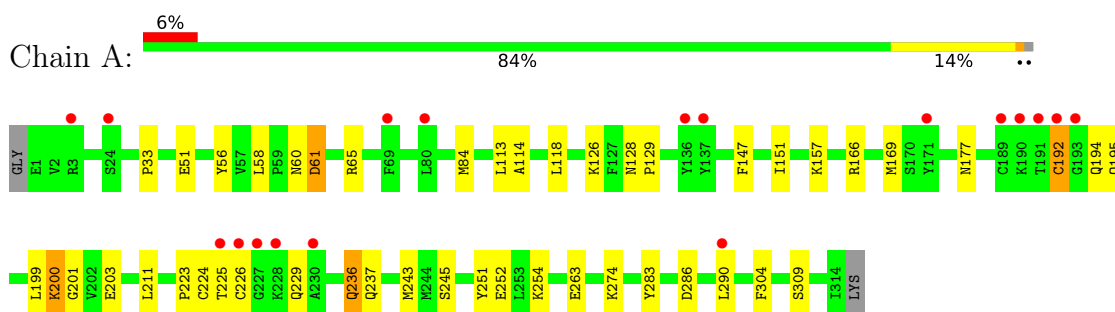
### 3 Residue-property plots [i](#)

These plots are drawn for all protein, RNA, DNA and oligosaccharide chains in the entry. The first graphic for a chain summarises the proportions of the various outlier classes displayed in the second graphic. The second graphic shows the sequence view annotated by issues in geometry and electron density. Residues are color-coded according to the number of geometric quality criteria for which they contain at least one outlier: green = 0, yellow = 1, orange = 2 and red = 3 or more. A red dot above a residue indicates a poor fit to the electron density ( $RSRZ > 2$ ). Stretches of 2 or more consecutive residues without any outlier are shown as a green connector. Residues present in the sample, but not in the model, are shown in grey.

- Molecule 1: Papain-like protease nsp3



- Molecule 1: Papain-like protease nsp3



## 4 Data and refinement statistics

Property	Value	Source
Space group	P 21 21 21	Depositor
Cell constants a, b, c, $\alpha$ , $\beta$ , $\gamma$	60.63Å 98.32Å 145.69Å 90.00° 90.00° 90.00°	Depositor
Resolution (Å)	72.84 – 2.31 72.84 – 2.31	Depositor EDS
% Data completeness (in resolution range)	90.2 (72.84-2.31) 90.1 (72.84-2.31)	Depositor EDS
$R_{merge}$	0.05	Depositor
$R_{sym}$	(Not available)	Depositor
$\langle I/\sigma(I) \rangle$ <sup>1</sup>	3.41 (at 2.29Å)	Xtrriage
Refinement program	PHENIX (1.20.1_4487: ???)	Depositor
R, $R_{free}$	0.203 , 0.256 0.212 , 0.258	Depositor DCC
$R_{free}$ test set	1975 reflections (5.09%)	wwPDB-VP
Wilson B-factor (Å <sup>2</sup> )	33.3	Xtrriage
Anisotropy	0.894	Xtrriage
Bulk solvent $k_{sol}$ (e/Å <sup>3</sup> ), $B_{sol}$ (Å <sup>2</sup> )	0.39 , 36.8	EDS
L-test for twinning <sup>2</sup>	$\langle  L  \rangle = 0.54$ , $\langle L^2 \rangle = 0.38$	Xtrriage
Estimated twinning fraction	No twinning to report.	Xtrriage
$F_o, F_c$ correlation	0.95	EDS
Total number of atoms	10009	wwPDB-VP
Average B, all atoms (Å <sup>2</sup> )	48.0	wwPDB-VP

Xtrriage's analysis on translational NCS is as follows: *The analyses of the Patterson function reveals a significant off-origin peak that is 46.39 % of the origin peak, indicating pseudo-translational symmetry. The chance of finding a peak of this or larger height randomly in a structure without pseudo-translational symmetry is equal to 1.1526e-04. The detected translational NCS is most likely also responsible for the elevated intensity ratio.*

<sup>1</sup>Intensities estimated from amplitudes.

<sup>2</sup>Theoretical values of  $\langle |L| \rangle$ ,  $\langle L^2 \rangle$  for acentric reflections are 0.5, 0.333 respectively for untwinned datasets, and 0.375, 0.2 for perfectly twinned datasets.

## 5 Model quality [i](#)

### 5.1 Standard geometry [i](#)

Bond lengths and bond angles in the following residue types are not validated in this section: ZN, A1LZ5

The Z score for a bond length (or angle) is the number of standard deviations the observed value is removed from the expected value. A bond length (or angle) with  $|Z| > 5$  is considered an outlier worth inspection. RMSZ is the root-mean-square of all Z scores of the bond lengths (or angles).

Mol	Chain	Bond lengths		Bond angles	
		RMSZ	# Z  >5	RMSZ	# Z  >5
1	A	0.73	0/2551	0.79	0/3462
1	B	0.63	0/2540	0.73	0/3447
All	All	0.68	0/5091	0.76	0/6909

There are no bond length outliers.

There are no bond angle outliers.

There are no chirality outliers.

There are no planarity outliers.

### 5.2 Too-close contacts [i](#)

In the following table, the Non-H and H(model) columns list the number of non-hydrogen atoms and hydrogen atoms in the chain respectively. The H(added) column lists the number of hydrogen atoms added and optimized by MolProbity. The Clashes column lists the number of clashes within the asymmetric unit, whereas Symm-Clashes lists symmetry-related clashes.

Mol	Chain	Non-H	H(model)	H(added)	Clashes	Symm-Clashes
1	A	2492	2395	2434	29	0
1	B	2482	2387	2420	31	0
2	A	2	0	0	0	0
2	B	2	0	0	0	0
3	A	32	0	0	0	0
3	B	32	0	0	0	0
4	A	101	0	0	5	0
4	B	84	0	0	3	0
All	All	5227	4782	4854	60	0

The all-atom clashscore is defined as the number of clashes found per 1000 atoms (including hydrogen atoms). The all-atom clashscore for this structure is 6.

All (60) close contacts within the same asymmetric unit are listed below, sorted by their clash magnitude.

Atom-1	Atom-2	Interatomic distance (Å)	Clash overlap (Å)
1:B:211:LEU:HD11	4:B:536:HOH:O	1.62	0.98
1:A:224:CYS:SG	4:A:589:HOH:O	2.23	0.96
1:A:224:CYS:SG	1:A:225:THR:N	2.55	0.79
1:A:169:MET:HE2	1:A:169:MET:HA	1.74	0.69
1:B:26:THR:OG1	1:B:29:GLN:HG3	1.94	0.68
1:B:192:CYS:CB	1:B:226:CYS:SG	2.90	0.60
1:B:211:LEU:CD1	4:B:536:HOH:O	2.33	0.58
1:A:169:MET:HA	1:A:169:MET:CE	2.34	0.58
1:B:192:CYS:HB3	1:B:226:CYS:SG	2.45	0.56
1:A:192:CYS:SG	1:A:226:CYS:SG	3.04	0.55
1:B:236:GLN:HG3	1:B:237:GLN:N	2.24	0.52
1:B:61:ASP:O	1:B:65:ARG:HG2	2.10	0.51
1:B:11:VAL:HG13	1:B:64:LEU:HD12	1.91	0.51
1:B:105:LYS:HB3	4:B:539:HOH:O	2.10	0.50
1:B:11:VAL:CG1	1:B:64:LEU:HD12	2.40	0.50
1:B:12:ASP:CG	1:B:14:ILE:HG22	2.32	0.50
1:B:62:ASP:OD1	1:B:65:ARG:NH2	2.44	0.50
1:B:192:CYS:SG	1:B:193:GLY:N	2.84	0.50
1:B:209:GLY:O	1:B:246:ALA:HB2	2.12	0.50
1:B:114:ALA:O	1:B:118:LEU:HD22	2.13	0.49
1:A:128:ASN:HB2	1:A:129:PRO:HD3	1.95	0.49
1:A:274:LYS:HE2	1:A:286:ASP:OD2	2.13	0.49
1:A:236:GLN:HG3	1:A:237:GLN:N	2.28	0.48
1:A:252:GLU:OE2	1:A:254:LYS:HE2	2.13	0.48
1:A:157:LYS:HE3	4:A:584:HOH:O	2.12	0.48
1:B:24:SER:O	1:B:24:SER:OG	2.32	0.48
1:B:276:ILE:HD12	1:B:276:ILE:N	2.29	0.48
1:B:189:CYS:SG	1:B:192:CYS:N	2.85	0.47
1:B:22:ASP:OD2	1:B:24:SER:HB3	2.14	0.47
1:A:263:GLU:OE2	4:A:501:HOH:O	2.21	0.47
1:A:166:ARG:HD3	1:A:245:SER:OG	2.15	0.47
1:A:203:GLU:H	1:A:203:GLU:CD	2.19	0.46
1:B:189:CYS:SG	1:B:191:THR:N	2.89	0.45
1:B:268:TYR:CD1	1:B:269:GLN:HG3	2.52	0.45
1:A:147:PHE:CE2	1:A:151:ILE:HD11	2.52	0.45
1:A:223:PRO:HA	1:A:229:GLN:HG2	1.99	0.45
1:B:95:TYR:CD1	1:B:144:ALA:HB3	2.52	0.44
1:B:33:PRO:HG2	1:B:58:LEU:HD22	2.00	0.43
1:B:187:VAL:HG23	1:B:187:VAL:O	2.17	0.43
1:A:309:SER:O	4:A:502:HOH:O	2.21	0.43

*Continued on next page...*



Continued from previous page...

Atom-1	Atom-2	Interatomic distance (Å)	Clash overlap (Å)
1:B:296:TYR:CD1	1:B:296:TYR:C	2.92	0.43
1:A:283:TYR:CD2	1:A:290:LEU:HD11	2.53	0.43
1:B:254:LYS:HA	1:B:254:LYS:HD2	1.83	0.42
1:A:56:TYR:CD1	1:A:84:MET:HE3	2.53	0.42
1:B:189:CYS:SG	1:B:190:LYS:N	2.92	0.42
1:B:28:GLY:HA2	1:B:32:GLY:O	2.18	0.42
1:B:205:VAL:O	1:B:205:VAL:HG23	2.18	0.42
1:A:113:LEU:O	1:A:114:ALA:C	2.58	0.42
1:A:201:GLY:HA3	4:A:520:HOH:O	2.20	0.42
1:B:128:ASN:HB2	1:B:129:PRO:HD3	2.02	0.42
1:A:199:LEU:C	1:A:200:LYS:HG2	2.39	0.41
1:A:114:ALA:O	1:A:118:LEU:HD22	2.20	0.41
1:B:202:VAL:O	1:B:202:VAL:HG22	2.19	0.41
1:A:33:PRO:HG2	1:A:58:LEU:HD22	2.02	0.41
1:A:126:LYS:HG3	1:A:177:ASN:HB3	2.02	0.41
1:A:211:LEU:HD12	1:A:251:TYR:CD2	2.56	0.41
1:A:166:ARG:HA	1:A:243:MET:HE1	2.02	0.41
1:A:243:MET:HG3	1:A:304:PHE:CZ	2.55	0.41
1:A:61:ASP:N	1:A:65:ARG:HH11	2.19	0.40
1:A:194:GLN:HG3	1:A:195:GLN:N	2.36	0.40

There are no symmetry-related clashes.

## 5.3 Torsion angles [i](#)

### 5.3.1 Protein backbone [i](#)

In the following table, the Percentiles column shows the percent Ramachandran outliers of the chain as a percentile score with respect to all X-ray entries followed by that with respect to entries of similar resolution.

The Analysed column shows the number of residues for which the backbone conformation was analysed, and the total number of residues.

Mol	Chain	Analysed	Favoured	Allowed	Outliers	Percentiles	
1	A	312/316 (99%)	295 (95%)	17 (5%)	0	100	100
1	B	309/316 (98%)	292 (94%)	16 (5%)	1 (0%)	37	46
All	All	621/632 (98%)	587 (94%)	33 (5%)	1 (0%)	44	54

All (1) Ramachandran outliers are listed below:

Mol	Chain	Res	Type
1	B	209	GLY

### 5.3.2 Protein sidechains [i](#)

In the following table, the Percentiles column shows the percent sidechain outliers of the chain as a percentile score with respect to all X-ray entries followed by that with respect to entries of similar resolution.

The Analysed column shows the number of residues for which the sidechain conformation was analysed, and the total number of residues.

Mol	Chain	Analysed	Rotameric	Outliers	Percentiles	
1	A	274/275 (100%)	268 (98%)	6 (2%)	47	63
1	B	272/275 (99%)	260 (96%)	12 (4%)	24	34
All	All	546/550 (99%)	528 (97%)	18 (3%)	33	47

All (18) residues with a non-rotameric sidechain are listed below:

Mol	Chain	Res	Type
1	B	24	SER
1	B	51	GLU
1	B	65	ARG
1	B	85	SER
1	B	118	LEU
1	B	126	LYS
1	B	140	ARG
1	B	194	GLN
1	B	195	GLN
1	B	225	THR
1	B	228	LYS
1	B	232	LYS
1	A	51	GLU
1	A	60	ASN
1	A	61	ASP
1	A	192	CYS
1	A	200	LYS
1	A	236	GLN

Sometimes sidechains can be flipped to improve hydrogen bonding and reduce clashes. All (2) such sidechains are listed below:

Mol	Chain	Res	Type
1	A	97	GLN
1	A	195	GLN

### 5.3.3 RNA [i](#)

There are no RNA molecules in this entry.

## 5.4 Non-standard residues in protein, DNA, RNA chains [i](#)

There are no non-standard protein/DNA/RNA residues in this entry.

## 5.5 Carbohydrates [i](#)

There are no oligosaccharides in this entry.

## 5.6 Ligand geometry [i](#)

Of 6 ligands modelled in this entry, 4 are monoatomic - leaving 2 for Mogul analysis.

In the following table, the Counts columns list the number of bonds (or angles) for which Mogul statistics could be retrieved, the number of bonds (or angles) that are observed in the model and the number of bonds (or angles) that are defined in the Chemical Component Dictionary. The Link column lists molecule types, if any, to which the group is linked. The Z score for a bond length (or angle) is the number of standard deviations the observed value is removed from the expected value. A bond length (or angle) with  $|Z| > 2$  is considered an outlier worth inspection. RMSZ is the root-mean-square of all Z scores of the bond lengths (or angles).

Mol	Type	Chain	Res	Link	Bond lengths			Bond angles		
					Counts	RMSZ	# Z  > 2	Counts	RMSZ	# Z  > 2
3	A1LZ5	A	401	-	33,37,37	2.35	14 (42%)	49,56,56	4.31	24 (48%)
3	A1LZ5	B	403	-	33,37,37	2.41	13 (39%)	49,56,56	4.56	28 (57%)

In the following table, the Chirals column lists the number of chiral outliers, the number of chiral centers analysed, the number of these observed in the model and the number defined in the Chemical Component Dictionary. Similar counts are reported in the Torsion and Rings columns. '-' means no outliers of that kind were identified.

Mol	Type	Chain	Res	Link	Chirals	Torsions	Rings
3	A1LZ5	A	401	-	-	1/18/38/38	0/6/6/6
3	A1LZ5	B	403	-	-	1/18/38/38	0/6/6/6

All (27) bond length outliers are listed below:

Mol	Chain	Res	Type	Atoms	Z	Observed(Å)	Ideal(Å)
3	A	401	A1LZ5	C26-C29	-5.83	1.32	1.41
3	B	403	A1LZ5	C26-C29	-5.58	1.32	1.41
3	B	403	A1LZ5	C12-N06	4.54	1.53	1.46
3	B	403	A1LZ5	C20-C19	4.09	1.60	1.50
3	A	401	A1LZ5	C24-C23	3.91	1.45	1.36
3	A	401	A1LZ5	C20-C19	3.79	1.59	1.50
3	B	403	A1LZ5	C24-C23	3.69	1.45	1.36
3	B	403	A1LZ5	C02-N17	3.66	1.41	1.34
3	A	401	A1LZ5	C30-C29	3.66	1.47	1.41
3	B	403	A1LZ5	C28-C27	3.64	1.62	1.55
3	A	401	A1LZ5	C13-C05	3.43	1.46	1.39
3	B	403	A1LZ5	C22-C29	-3.17	1.36	1.42
3	B	403	A1LZ5	C31-C30	-3.15	1.31	1.37
3	A	401	A1LZ5	C31-C30	-3.13	1.31	1.37
3	B	403	A1LZ5	C30-C29	3.12	1.46	1.41
3	A	401	A1LZ5	C24-C25	3.05	1.45	1.38
3	A	401	A1LZ5	C32-C31	3.03	1.44	1.38
3	A	401	A1LZ5	C21-C22	-2.87	1.38	1.43
3	A	401	A1LZ5	C07-N06	2.64	1.50	1.46
3	B	403	A1LZ5	C07-N06	2.59	1.50	1.46
3	A	401	A1LZ5	C23-C22	-2.42	1.37	1.42
3	B	403	A1LZ5	C23-C22	-2.33	1.37	1.42
3	A	401	A1LZ5	C14-C13	2.28	1.42	1.38
3	A	401	A1LZ5	C14-C15	2.21	1.44	1.39
3	B	403	A1LZ5	C05-N06	2.17	1.44	1.38
3	B	403	A1LZ5	C21-C22	-2.05	1.39	1.43
3	A	401	A1LZ5	C05-N06	2.04	1.44	1.38

All (52) bond angle outliers are listed below:

Mol	Chain	Res	Type	Atoms	Z	Observed(°)	Ideal(°)
3	B	403	A1LZ5	C27-C26-C25	-12.19	110.03	132.65
3	B	403	A1LZ5	C28-C27-C26	-11.99	96.14	105.04
3	B	403	A1LZ5	C24-C25-C26	-11.80	100.58	121.48
3	A	401	A1LZ5	C28-C27-C26	-11.40	96.58	105.04
3	A	401	A1LZ5	C24-C25-C26	-11.26	101.53	121.48
3	A	401	A1LZ5	C27-C26-C25	-11.25	111.76	132.65
3	B	403	A1LZ5	C25-C26-C29	10.53	131.01	118.58
3	A	401	A1LZ5	C25-C26-C29	10.15	130.56	118.58
3	B	403	A1LZ5	C27-C26-C29	7.80	118.90	108.73
3	B	403	A1LZ5	C23-C22-C29	-7.57	106.00	118.21
3	A	401	A1LZ5	C27-C26-C29	6.80	117.59	108.73

*Continued on next page...*

*Continued from previous page...*

Mol	Chain	Res	Type	Atoms	Z	Observed(°)	Ideal(°)
3	A	401	A1LZ5	C23-C22-C29	-6.76	107.31	118.21
3	A	401	A1LZ5	C27-C28-C30	6.46	109.84	105.04
3	A	401	A1LZ5	C31-C30-C29	-6.23	111.22	118.58
3	B	403	A1LZ5	C20-C18-C19	5.88	64.57	59.08
3	B	403	A1LZ5	C23-C24-C25	5.67	130.04	120.99
3	B	403	A1LZ5	C26-C29-C22	5.41	130.00	123.99
3	B	403	A1LZ5	C27-C28-C30	5.23	108.93	105.04
3	A	401	A1LZ5	C28-C30-C31	5.12	142.16	132.65
3	A	401	A1LZ5	C23-C24-C25	4.85	128.72	120.99
3	A	401	A1LZ5	C26-C29-C22	4.66	129.17	123.99
3	B	403	A1LZ5	C28-C30-C31	4.58	141.16	132.65
3	A	401	A1LZ5	C20-C18-C19	4.54	63.32	59.08
3	B	403	A1LZ5	C12-C11-N09	4.49	115.87	110.80
3	B	403	A1LZ5	C31-C30-C29	-4.45	113.32	118.58
3	A	401	A1LZ5	C32-C21-C22	-4.43	112.73	118.53
3	A	401	A1LZ5	C32-C31-C30	4.30	127.43	119.70
3	B	403	A1LZ5	C32-C31-C30	4.28	127.40	119.70
3	B	403	A1LZ5	C30-C29-C22	-4.07	119.47	123.99
3	B	403	A1LZ5	C32-C21-C22	-3.99	113.31	118.53
3	A	401	A1LZ5	C19-C18-C21	-3.94	112.30	119.42
3	B	403	A1LZ5	C11-C12-N06	3.91	118.30	110.70
3	B	403	A1LZ5	C15-C03-C02	-3.80	117.72	120.56
3	B	403	A1LZ5	C21-C22-C29	3.40	126.09	116.12
3	A	401	A1LZ5	C15-C03-C02	-3.31	118.08	120.56
3	A	401	A1LZ5	C21-C22-C29	3.28	125.73	116.12
3	A	401	A1LZ5	C11-C12-N06	3.17	116.86	110.70
3	A	401	A1LZ5	O01-C02-N17	-3.00	116.76	122.60
3	B	403	A1LZ5	C10-N09-C11	-2.96	106.24	110.66
3	A	401	A1LZ5	C16-C15-C03	-2.93	118.25	122.79
3	B	403	A1LZ5	C16-C15-C03	-2.90	118.29	122.79
3	B	403	A1LZ5	O01-C02-N17	-2.83	117.10	122.60
3	B	403	A1LZ5	C03-C04-C05	2.65	125.40	120.28
3	A	401	A1LZ5	C03-C04-C05	2.59	125.28	120.28
3	B	403	A1LZ5	C08-C07-N06	2.57	115.69	110.70
3	B	403	A1LZ5	C28-C30-C29	-2.48	105.51	108.73
3	B	403	A1LZ5	C07-C08-N09	2.46	113.58	110.80
3	A	401	A1LZ5	C30-C29-C22	-2.29	121.45	123.99
3	A	401	A1LZ5	C03-C02-N17	2.13	122.63	116.32
3	B	403	A1LZ5	C19-C18-C21	-2.11	115.61	119.42
3	A	401	A1LZ5	C12-C11-N09	2.10	113.18	110.80
3	B	403	A1LZ5	C13-C05-C04	-2.01	115.08	119.07

There are no chirality outliers.

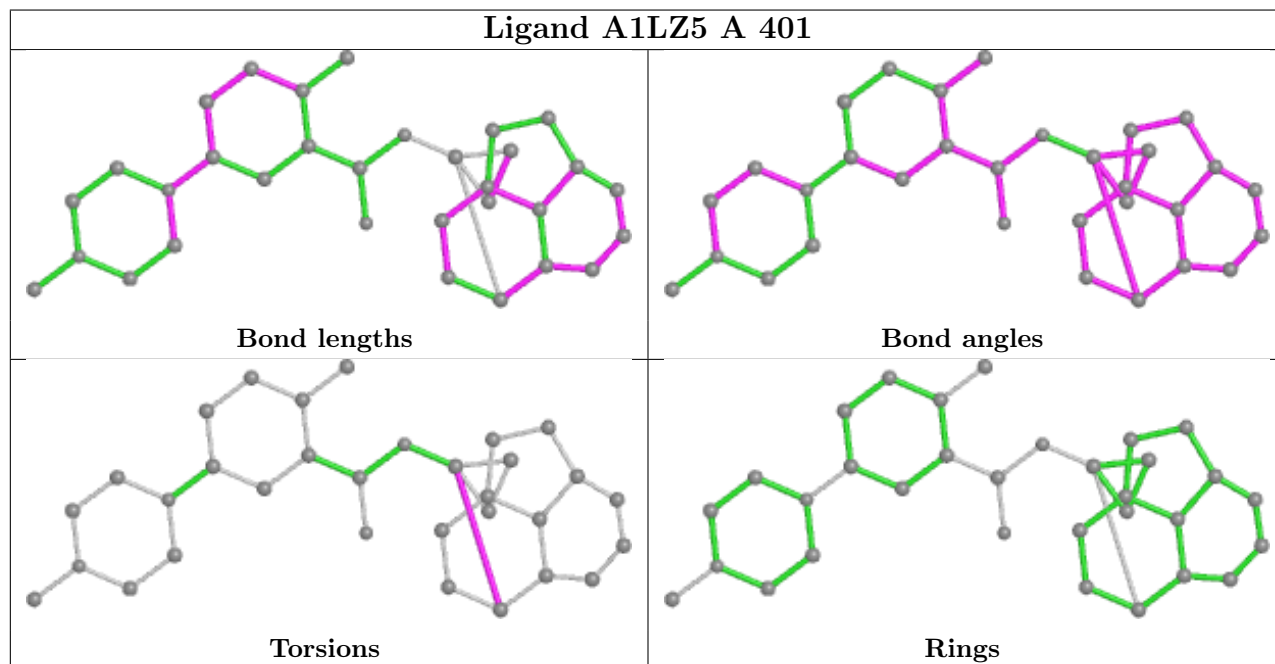
All (2) torsion outliers are listed below:

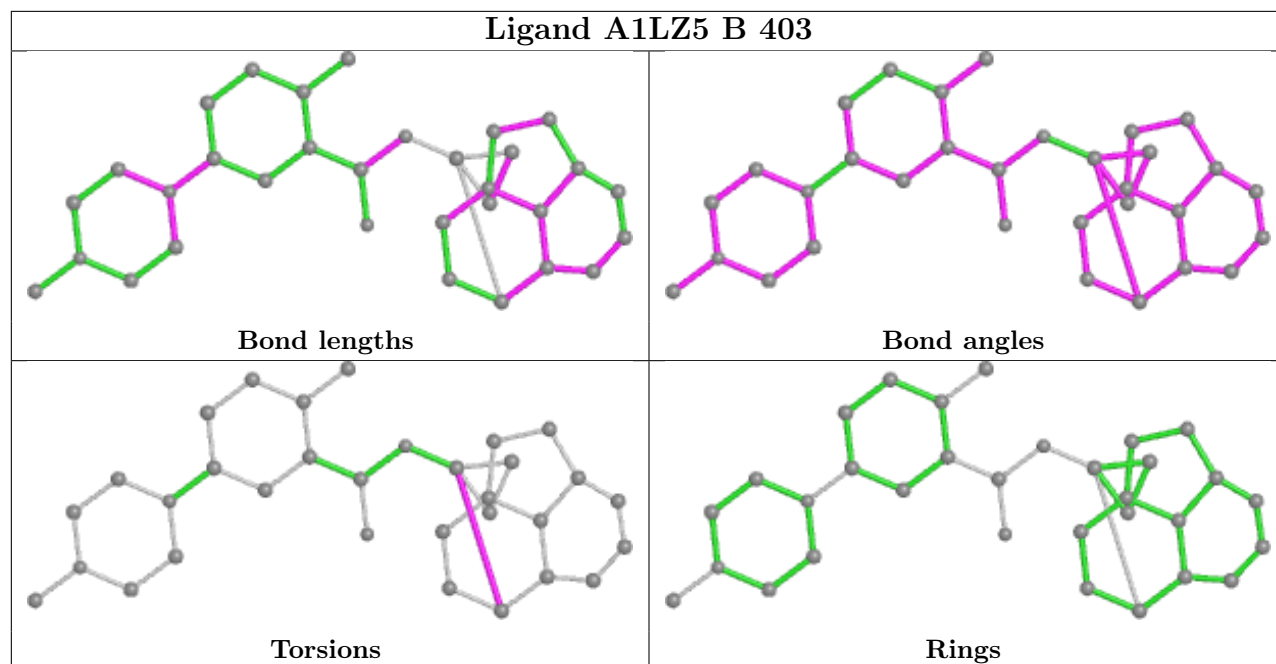
Mol	Chain	Res	Type	Atoms
3	B	403	A1LZ5	N17-C18-C21-C32
3	A	401	A1LZ5	N17-C18-C21-C32

There are no ring outliers.

No monomer is involved in short contacts.

The following is a two-dimensional graphical depiction of Mogul quality analysis of bond lengths, bond angles, torsion angles, and ring geometry for all instances of the Ligand of Interest. In addition, ligands with molecular weight > 250 and outliers as shown on the validation Tables will also be included. For torsion angles, if less than 5% of the Mogul distribution of torsion angles is within 10 degrees of the torsion angle in question, then that torsion angle is considered an outlier. Any bond that is central to one or more torsion angles identified as an outlier by Mogul will be highlighted in the graph. For rings, the root-mean-square deviation (RMSD) between the ring in question and similar rings identified by Mogul is calculated over all ring torsion angles. If the average RMSD is greater than 60 degrees and the minimal RMSD between the ring in question and any Mogul-identified rings is also greater than 60 degrees, then that ring is considered an outlier. The outliers are highlighted in purple. The color gray indicates Mogul did not find sufficient equivalents in the CSD to analyse the geometry.





## 5.7 Other polymers [i](#)

There are no such residues in this entry.

## 5.8 Polymer linkage issues [i](#)

There are no chain breaks in this entry.

## 6 Fit of model and data

### 6.1 Protein, DNA and RNA chains

In the following table, the column labelled ‘#RSRZ > 2’ contains the number (and percentage) of RSRZ outliers, followed by percent RSRZ outliers for the chain as percentile scores relative to all X-ray entries and entries of similar resolution. The OWAB column contains the minimum, median, 95<sup>th</sup> percentile and maximum values of the occupancy-weighted average B-factor per residue. The column labelled ‘Q < 0.9’ lists the number of (and percentage) of residues with an average occupancy less than 0.9.

Mol	Chain	Analysed	<RSRZ>	#RSRZ>2	OWAB(Å <sup>2</sup> )	Q<0.9
1	A	314/316 (99%)	0.29	18 (5%) 30 33	25, 42, 71, 122	0
1	B	313/316 (99%)	0.52	28 (8%) 17 19	27, 46, 88, 170	0
All	All	627/632 (99%)	0.40	46 (7%) 22 25	25, 44, 78, 170	0

All (46) RSRZ outliers are listed below:

Mol	Chain	Res	Type	RSRZ
1	B	225	THR	6.6
1	B	227	GLY	5.9
1	B	223	PRO	5.7
1	B	226	CYS	5.5
1	B	192	CYS	5.3
1	A	227	GLY	5.3
1	B	190	LYS	5.0
1	B	209	GLY	4.3
1	B	228	LYS	3.9
1	B	191	THR	3.9
1	B	193	GLY	3.8
1	A	226	CYS	3.5
1	B	230	ALA	3.5
1	B	207	TYR	3.5
1	A	191	THR	3.5
1	A	192	CYS	3.3
1	A	193	GLY	3.2
1	B	189	CYS	3.2
1	A	225	THR	3.1
1	B	205	VAL	2.8
1	B	195	GLN	2.7
1	A	24	SER	2.7
1	B	211	LEU	2.7
1	A	190	LYS	2.7

*Continued on next page...*



*Continued from previous page...*

Mol	Chain	Res	Type	RSRZ
1	A	228	LYS	2.7
1	A	137	TYR	2.6
1	B	229	GLN	2.5
1	B	314	ILE	2.5
1	A	171	TYR	2.5
1	B	171	TYR	2.4
1	B	214	GLU	2.4
1	A	3	ARG	2.4
1	B	143	GLU	2.3
1	A	136	TYR	2.3
1	A	290	LEU	2.3
1	B	212	SER	2.3
1	A	80	LEU	2.2
1	A	69	PHE	2.2
1	A	189	CYS	2.2
1	B	44	ILE	2.2
1	B	187	VAL	2.1
1	B	201	GLY	2.1
1	B	60	ASN	2.1
1	B	194	GLN	2.1
1	B	188	VAL	2.0
1	A	230	ALA	2.0

## 6.2 Non-standard residues in protein, DNA, RNA chains [\(i\)](#)

There are no non-standard protein/DNA/RNA residues in this entry.

## 6.3 Carbohydrates [\(i\)](#)

There are no monosaccharides in this entry.

## 6.4 Ligands [\(i\)](#)

In the following table, the Atoms column lists the number of modelled atoms in the group and the number defined in the chemical component dictionary. The B-factors column lists the minimum, median, 95<sup>th</sup> percentile and maximum values of B factors of atoms in the group. The column labelled 'Q< 0.9' lists the number of atoms with occupancy less than 0.9.

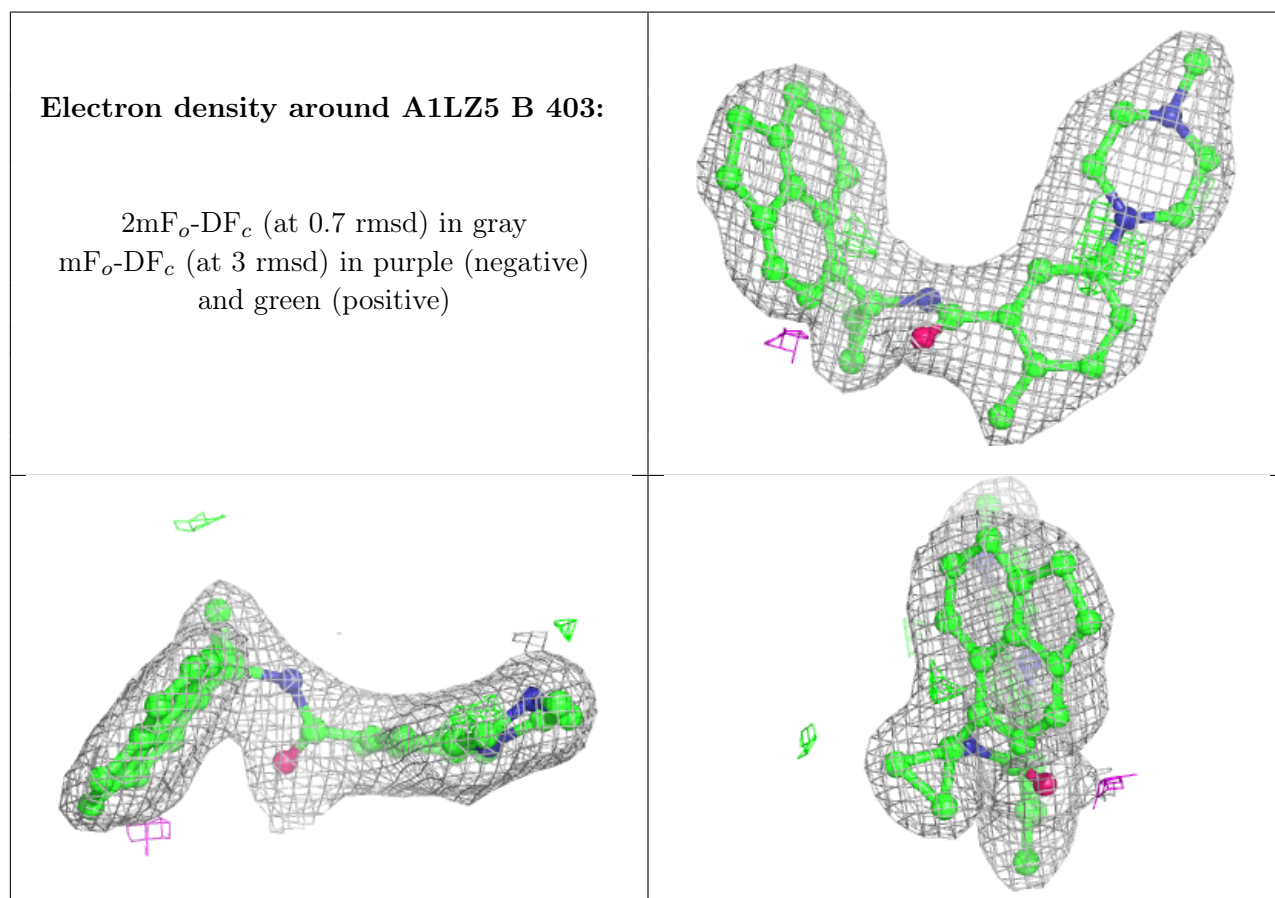
Mol	Type	Chain	Res	Atoms	RSCC	RSR	B-factors(Å <sup>2</sup> )	Q<0.9
2	ZN	B	401	1/1	0.92	0.10	92,92,92,92	0

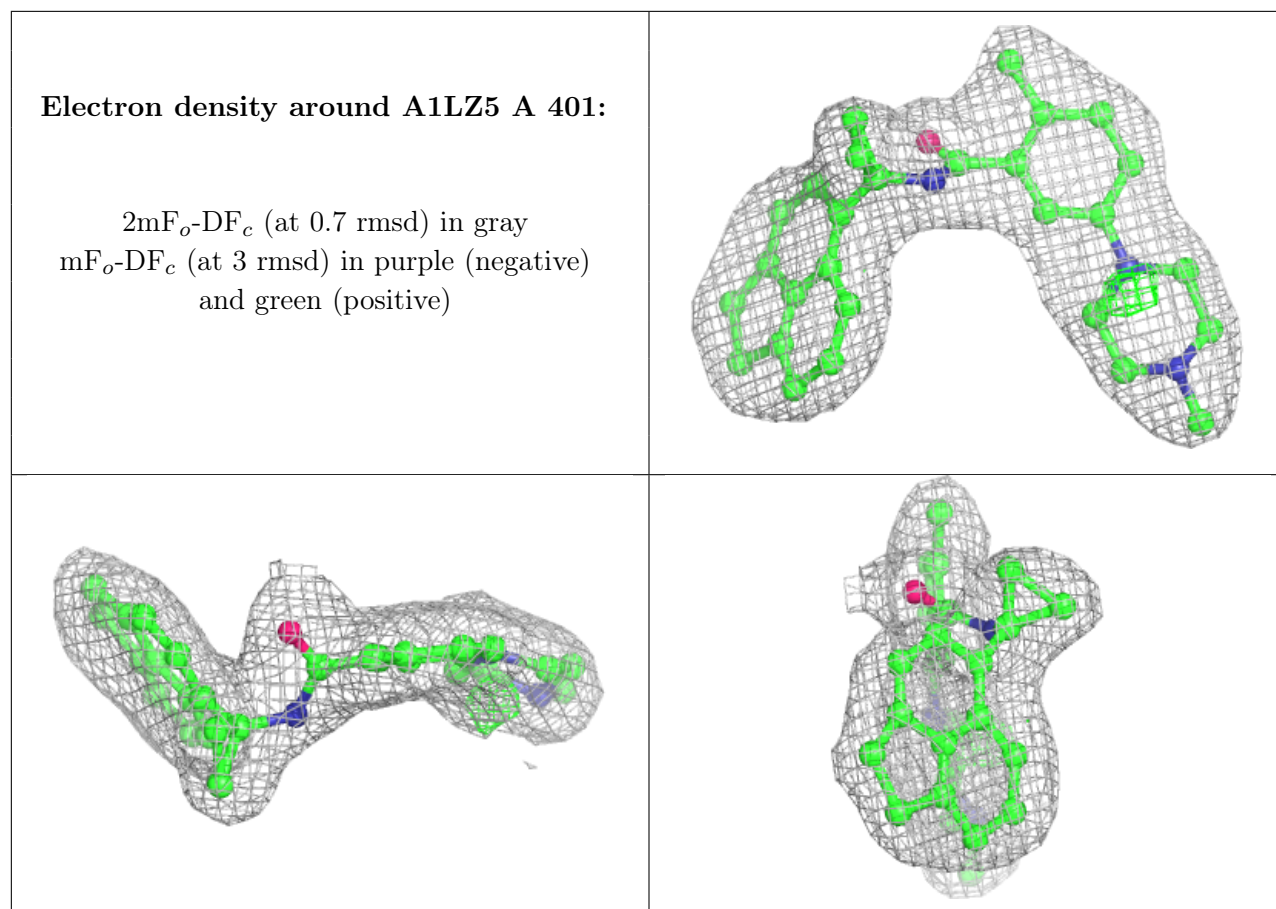
*Continued on next page...*

Continued from previous page...

Mol	Type	Chain	Res	Atoms	RSCC	RSR	B-factors(Å <sup>2</sup> )	Q<0.9
2	ZN	A	403	1/1	0.93	0.11	88,88,88,88	0
2	ZN	B	402	1/1	0.94	0.07	126,126,126,126	0
3	A1LZ5	B	403	32/32	0.94	0.10	20,31,38,45	0
2	ZN	A	402	1/1	0.95	0.07	88,88,88,88	0
3	A1LZ5	A	401	32/32	0.95	0.08	19,29,38,44	0

The following is a graphical depiction of the model fit to experimental electron density of all instances of the Ligand of Interest. In addition, ligands with molecular weight > 250 and outliers as shown on the geometry validation Tables will also be included. Each fit is shown from different orientation to approximate a three-dimensional view.





## 6.5 Other polymers [i](#)

There are no such residues in this entry.