



# Full wwPDB X-ray Structure Validation Report ⓘ

Aug 8, 2023 – 12:10 PM JST

PDB ID : 7YRI  
Title : S-adenosylmethionine sensor upstream of mTORC1  
Authors : Zhang, H.; Li, X.Z.; Wen, Y.N.  
Deposited on : 2022-08-10  
Resolution : 2.61 Å(reported)

This is a Full wwPDB X-ray Structure Validation Report for a publicly released PDB entry.

We welcome your comments at [validation@mail.wwpdb.org](mailto:validation@mail.wwpdb.org)

A user guide is available at

<https://www.wwpdb.org/validation/2017/XrayValidationReportHelp>

with specific help available everywhere you see the ⓘ symbol.

The types of validation reports are described at

<http://www.wwpdb.org/validation/2017/FAQs#types>.

---

The following versions of software and data (see [references ⓘ](#)) were used in the production of this report:

MolProbity : 4.02b-467  
Mogul : 1.8.5 (274361), CSD as541be (2020)  
Xtriage (Phenix) : 1.13  
EDS : 2.35  
buster-report : 1.1.7 (2018)  
Percentile statistics : 20191225.v01 (using entries in the PDB archive December 25th 2019)  
Refmac : 5.8.0158  
CCP4 : 7.0.044 (Gargrove)  
Ideal geometry (proteins) : Engh & Huber (2001)  
Ideal geometry (DNA, RNA) : Parkinson et al. (1996)  
Validation Pipeline (wwPDB-VP) : 2.35

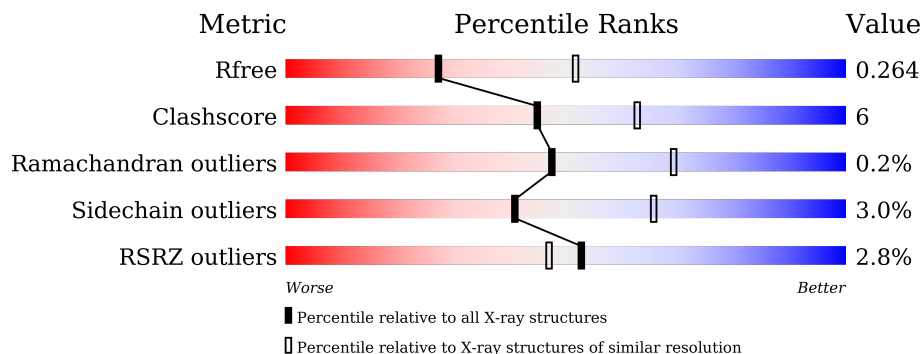
# 1 Overall quality at a glance

The following experimental techniques were used to determine the structure:

*X-RAY DIFFRACTION*

The reported resolution of this entry is 2.61 Å.

Percentile scores (ranging between 0-100) for global validation metrics of the entry are shown in the following graphic. The table shows the number of entries on which the scores are based.



Metric	Whole archive (#Entries)	Similar resolution (#Entries, resolution range(Å))
$R_{free}$	130704	3797 (2.64-2.60)
Clashscore	141614	4168 (2.64-2.60)
Ramachandran outliers	138981	4093 (2.64-2.60)
Sidechain outliers	138945	4093 (2.64-2.60)
RSRZ outliers	127900	3731 (2.64-2.60)

The table below summarises the geometric issues observed across the polymeric chains and their fit to the electron density. The red, orange, yellow and green segments of the lower bar indicate the fraction of residues that contain outliers for  $\geq 3$ , 2, 1 and 0 types of geometric quality criteria respectively. A grey segment represents the fraction of residues that are not modelled. The numeric value for each fraction is indicated below the corresponding segment, with a dot representing fractions  $\leq 5\%$ . The upper red bar (where present) indicates the fraction of residues that have poor fit to the electron density. The numeric value is given above the bar.

Mol	Chain	Length	Quality of chain
1	A	236	
1	C	236	
1	D	236	
1	J	236	

## 2 Entry composition [i](#)

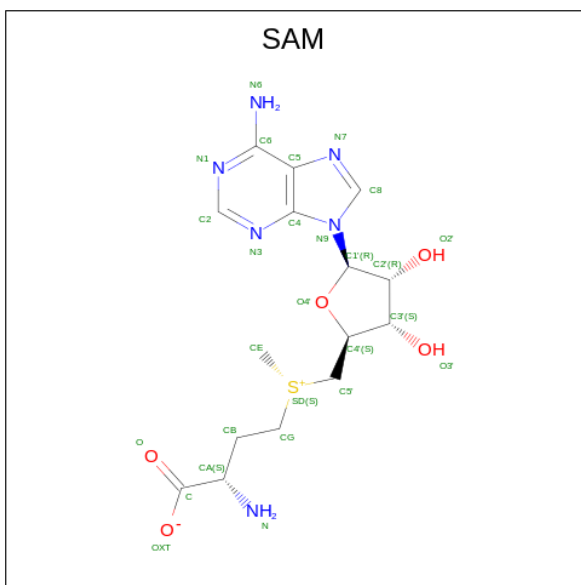
There are 3 unique types of molecules in this entry. The entry contains 13998 atoms, of which 6899 are hydrogens and 0 are deuteriums.

In the tables below, the ZeroOcc column contains the number of atoms modelled with zero occupancy, the AltConf column contains the number of residues with at least one atom in alternate conformation and the Trace column contains the number of residues modelled with at most 2 atoms.

- Molecule 1 is a protein called S-adenosylmethionine sensor upstream of mTORC1.

Mol	Chain	Residues	Atoms					ZeroOcc	AltConf	Trace	
			Total	C	H	N	O				S
1	J	215	Total	C	H	N	O	S	0	0	0
			3532	1124	1776	309	311	12			
1	C	200	Total	C	H	N	O	S	0	0	0
			3270	1049	1640	285	285	11			
1	A	216	Total	C	H	N	O	S	0	0	0
			3442	1110	1717	299	304	12			
1	D	205	Total	C	H	N	O	S	0	0	0
			3341	1070	1678	285	297	11			

- Molecule 2 is S-ADENOSYLMETHIONINE (three-letter code: SAM) (formula: C<sub>15</sub>H<sub>22</sub>N<sub>6</sub>O<sub>5</sub>S) (labeled as "Ligand of Interest" by depositor).



Mol	Chain	Residues	Atoms					ZeroOcc	AltConf	
			Total	C	H	N	O			S
2	J	1	Total	C	H	N	O	S	0	0
			49	15	22	6	5	1		
2	C	1	Total	C	H	N	O	S	0	0
			49	15	22	6	5	1		

*Continued on next page...*

*Continued from previous page...*

Mol	Chain	Residues	Atoms					ZeroOcc	AltConf	
2	A	1	Total	C	H	N	O	S	0	0
			49	15	22	6	5	1		
2	D	1	Total	C	H	N	O	S	0	0
			49	15	22	6	5	1		

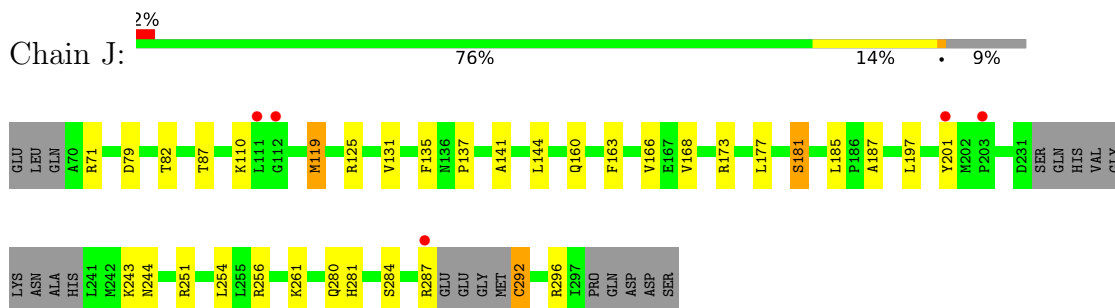
- Molecule 3 is water.

Mol	Chain	Residues	Atoms		ZeroOcc	AltConf
3	J	53	Total	O	0	0
			53	53		
3	C	46	Total	O	0	0
			46	46		
3	A	70	Total	O	0	0
			70	70		
3	D	48	Total	O	0	0
			48	48		

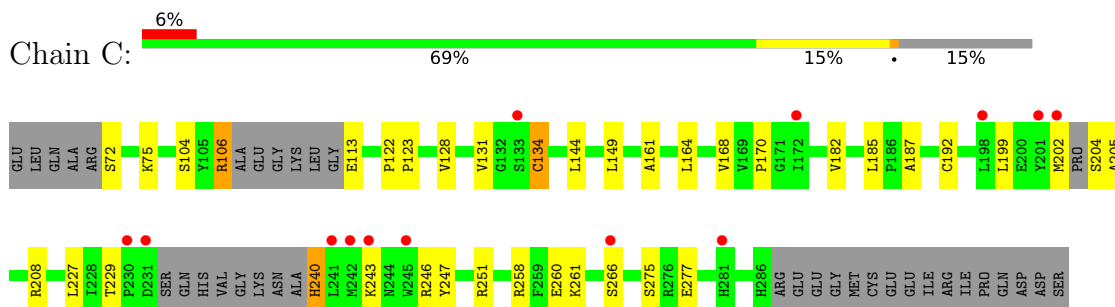
### 3 Residue-property plots [i](#)

These plots are drawn for all protein, RNA, DNA and oligosaccharide chains in the entry. The first graphic for a chain summarises the proportions of the various outlier classes displayed in the second graphic. The second graphic shows the sequence view annotated by issues in geometry and electron density. Residues are color-coded according to the number of geometric quality criteria for which they contain at least one outlier: green = 0, yellow = 1, orange = 2 and red = 3 or more. A red dot above a residue indicates a poor fit to the electron density ( $RSRZ > 2$ ). Stretches of 2 or more consecutive residues without any outlier are shown as a green connector. Residues present in the sample, but not in the model, are shown in grey.

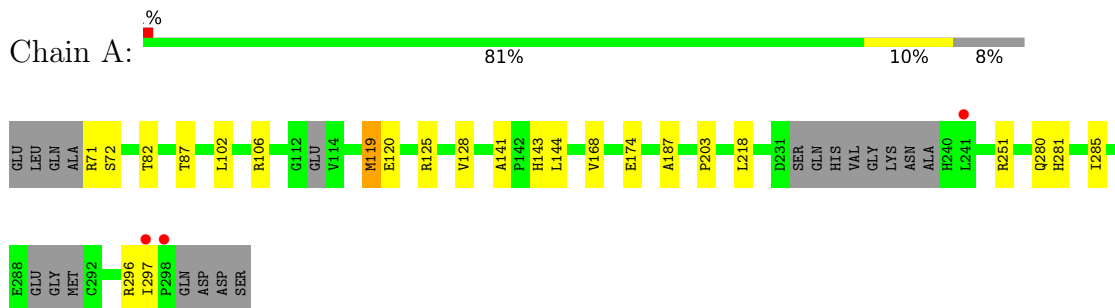
- Molecule 1: S-adenosylmethionine sensor upstream of mTORC1



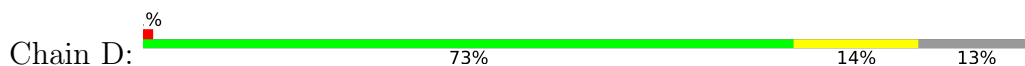
- Molecule 1: S-adenosylmethionine sensor upstream of mTORC1

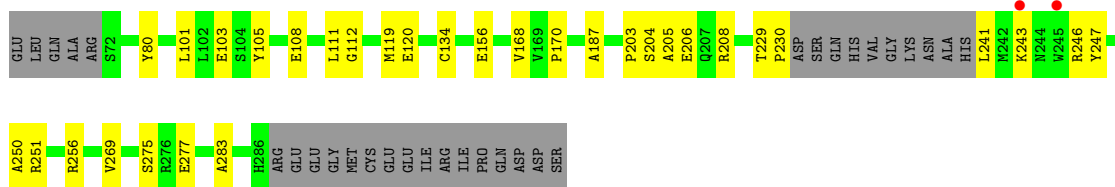


- Molecule 1: S-adenosylmethionine sensor upstream of mTORC1



- Molecule 1: S-adenosylmethionine sensor upstream of mTORC1





## 4 Data and refinement statistics

Property	Value	Source
Space group	P 1 21 1	Depositor
Cell constants a, b, c, $\alpha$ , $\beta$ , $\gamma$	64.08Å 78.89Å 98.89Å 90.00° 96.17° 90.00°	Depositor
Resolution (Å)	49.57 – 2.61 49.57 – 2.61	Depositor EDS
% Data completeness (in resolution range)	87.3 (49.57-2.61) 87.6 (49.57-2.61)	Depositor EDS
$R_{merge}$	(Not available)	Depositor
$R_{sym}$	(Not available)	Depositor
$\langle I/\sigma(I) \rangle$ <sup>1</sup>	3.31 (at 2.61Å)	Xtrriage
Refinement program	PHENIX 1.20_4459	Depositor
R, $R_{free}$	0.225 , 0.270 0.218 , 0.264	Depositor DCC
$R_{free}$ test set	1777 reflections (6.76%)	wwPDB-VP
Wilson B-factor (Å <sup>2</sup> )	29.8	Xtrriage
Anisotropy	0.841	Xtrriage
Bulk solvent $k_{sol}$ (e/Å <sup>3</sup> ), $B_{sol}$ (Å <sup>2</sup> )	0.40 , 45.3	EDS
L-test for twinning <sup>2</sup>	$\langle  L  \rangle = 0.52$ , $\langle L^2 \rangle = 0.35$	Xtrriage
Estimated twinning fraction	No twinning to report.	Xtrriage
$F_o, F_c$ correlation	0.93	EDS
Total number of atoms	13998	wwPDB-VP
Average B, all atoms (Å <sup>2</sup> )	44.0	wwPDB-VP

Xtrriage's analysis on translational NCS is as follows: *The analyses of the Patterson function reveals a significant off-origin peak that is 52.03 % of the origin peak, indicating pseudo-translational symmetry. The chance of finding a peak of this or larger height randomly in a structure without pseudo-translational symmetry is equal to 5.1568e-05. The detected translational NCS is most likely also responsible for the elevated intensity ratio.*

<sup>1</sup>Intensities estimated from amplitudes.

<sup>2</sup>Theoretical values of  $\langle |L| \rangle$ ,  $\langle L^2 \rangle$  for acentric reflections are 0.5, 0.333 respectively for untwinned datasets, and 0.375, 0.2 for perfectly twinned datasets.

## 5 Model quality [i](#)

### 5.1 Standard geometry [i](#)

Bond lengths and bond angles in the following residue types are not validated in this section: SAM

The Z score for a bond length (or angle) is the number of standard deviations the observed value is removed from the expected value. A bond length (or angle) with  $|Z| > 5$  is considered an outlier worth inspection. RMSZ is the root-mean-square of all Z scores of the bond lengths (or angles).

Mol	Chain	Bond lengths		Bond angles	
		RMSZ	# Z  >5	RMSZ	# Z  >5
1	A	0.29	0/1763	0.52	0/2388
1	C	0.30	0/1666	0.53	0/2253
1	D	0.28	0/1700	0.53	0/2301
1	J	0.30	0/1793	0.55	0/2422
All	All	0.29	0/6922	0.53	0/9364

There are no bond length outliers.

There are no bond angle outliers.

There are no chirality outliers.

There are no planarity outliers.

### 5.2 Too-close contacts [i](#)

In the following table, the Non-H and H(model) columns list the number of non-hydrogen atoms and hydrogen atoms in the chain respectively. The H(added) column lists the number of hydrogen atoms added and optimized by MolProbity. The Clashes column lists the number of clashes within the asymmetric unit, whereas Symm-Clashes lists symmetry-related clashes.

Mol	Chain	Non-H	H(model)	H(added)	Clashes	Symm-Clashes
1	A	1725	1717	1715	14	0
1	C	1630	1640	1637	27	0
1	D	1663	1678	1678	21	0
1	J	1756	1776	1776	27	0
2	A	27	22	22	0	0
2	C	27	22	22	0	0
2	D	27	22	22	0	0
2	J	27	22	22	3	0
3	A	70	0	0	2	0

*Continued on next page...*



*Continued from previous page...*

Mol	Chain	Non-H	H(model)	H(added)	Clashes	Symm-Clashes
3	C	46	0	0	5	0
3	D	48	0	0	2	0
3	J	53	0	0	7	0
All	All	7099	6899	6894	89	0

The all-atom clashscore is defined as the number of clashes found per 1000 atoms (including hydrogen atoms). The all-atom clashscore for this structure is 6.

All (89) close contacts within the same asymmetric unit are listed below, sorted by their clash magnitude.

Atom-1	Atom-2	Interatomic distance (Å)	Clash overlap (Å)
1:J:173:ARG:NH1	3:J:501:HOH:O	1.89	1.05
1:A:280:GLN:NE2	3:A:501:HOH:O	2.02	0.92
1:C:204:SER:N	3:C:501:HOH:O	2.10	0.84
1:J:280:GLN:OE1	3:J:502:HOH:O	1.98	0.81
1:C:204:SER:N	3:C:502:HOH:O	2.15	0.78
1:J:243:LYS:NZ	3:J:506:HOH:O	2.20	0.74
1:D:101:LEU:HD21	1:D:105:TYR:CZ	2.26	0.71
1:C:199:LEU:HB3	1:C:208:ARG:HD3	1.73	0.69
1:D:246:ARG:HD2	1:D:256:ARG:NH1	2.07	0.69
1:J:141:ALA:HB3	1:J:144:LEU:HD12	1.75	0.68
1:A:71:ARG:N	3:A:504:HOH:O	2.26	0.68
1:J:135:PHE:CE2	1:J:137:PRO:HB3	2.29	0.68
1:J:79:ASP:OD1	3:J:503:HOH:O	2.12	0.67
1:C:134:CYS:N	3:C:504:HOH:O	2.26	0.67
1:C:168:VAL:HG12	1:C:187:ALA:HB2	1.75	0.67
1:J:287:ARG:O	3:J:504:HOH:O	2.13	0.67
1:A:82:THR:HG22	1:A:87:THR:HG23	1.79	0.65
1:D:108:GLU:OE1	3:D:502:HOH:O	2.15	0.64
1:A:281:HIS:CE1	1:A:285:ILE:HD11	2.36	0.60
1:C:199:LEU:O	1:C:208:ARG:NE	2.34	0.60
1:J:135:PHE:CZ	1:J:137:PRO:HB3	2.37	0.60
1:C:170:PRO:HA	1:C:187:ALA:HB3	1.84	0.59
1:J:254:LEU:O	3:J:505:HOH:O	2.15	0.59
1:C:131:VAL:O	3:C:503:HOH:O	2.15	0.59
1:A:128:VAL:HG21	1:A:144:LEU:HD22	1.85	0.57
1:D:170:PRO:HA	1:D:187:ALA:HB3	1.86	0.57
1:D:275:SER:OG	1:D:277:GLU:OE1	2.17	0.56
1:J:256:ARG:NE	3:J:507:HOH:O	2.31	0.56
1:J:243:LYS:N	1:J:243:LYS:HD2	2.21	0.56
1:D:168:VAL:HG12	1:D:187:ALA:HB2	1.89	0.55

*Continued on next page...*

*Continued from previous page...*

Atom-1	Atom-2	Interatomic distance (Å)	Clash overlap (Å)
1:J:160:GLN:OE1	1:J:181:SER:OG	2.25	0.55
1:J:197:LEU:HB2	2:J:401:SAM:HE2	1.90	0.54
1:C:275:SER:OG	1:C:277:GLU:OE1	2.17	0.54
1:C:258:ARG:NH1	1:C:260:GLU:HB2	2.23	0.54
1:D:111:LEU:HD23	1:D:112:GLY:N	2.23	0.54
1:D:101:LEU:CD2	1:D:105:TYR:CE2	2.91	0.53
1:C:229:THR:HG1	1:C:266:SER:HG	1.56	0.53
1:D:205:ALA:HA	1:D:208:ARG:NH1	2.24	0.53
1:C:205:ALA:HA	1:C:208:ARG:HB2	1.89	0.52
1:D:246:ARG:HD2	1:D:256:ARG:HH12	1.75	0.52
1:D:101:LEU:CD2	1:D:105:TYR:CZ	2.93	0.51
1:D:119:MET:HG2	1:D:120:GLU:O	2.11	0.51
1:A:141:ALA:HB3	1:A:144:LEU:HD12	1.93	0.51
1:C:199:LEU:HD12	1:C:227:LEU:HD11	1.92	0.51
1:A:102:LEU:O	1:A:106:ARG:HG3	2.13	0.49
1:C:113:GLU:N	3:C:508:HOH:O	2.45	0.49
1:A:296:ARG:HD3	1:A:297:ILE:H	1.78	0.48
1:D:119:MET:CE	3:D:528:HOH:O	2.62	0.47
1:D:246:ARG:CD	1:D:256:ARG:NH1	2.76	0.47
1:D:229:THR:HG23	1:D:230:PRO:HD2	1.96	0.47
1:J:141:ALA:CB	1:J:144:LEU:HD12	2.44	0.47
1:C:106:ARG:HE	1:C:106:ARG:HA	1.80	0.46
1:J:201:TYR:CE1	2:J:401:SAM:H5'1	2.51	0.46
1:C:164:LEU:HD21	1:C:202:MET:SD	2.56	0.46
1:D:204:SER:OG	1:D:206:GLU:HG2	2.15	0.46
1:J:82:THR:HG22	1:J:87:THR:HG23	1.97	0.46
1:A:296:ARG:HD3	1:A:297:ILE:N	2.31	0.45
1:C:247:TYR:CZ	1:C:251:ARG:HD2	2.51	0.45
1:J:166:VAL:HG11	1:J:185:LEU:HD12	1.97	0.45
1:C:258:ARG:HH12	1:C:260:GLU:HB2	1.81	0.45
1:A:82:THR:HG22	1:A:87:THR:CG2	2.46	0.45
1:A:143:HIS:O	1:A:144:LEU:HD23	2.17	0.45
1:J:197:LEU:HB2	2:J:401:SAM:CE	2.47	0.44
1:D:247:TYR:CD1	1:D:283:ALA:HB1	2.53	0.44
1:J:131:VAL:HG11	1:J:163:PHE:CG	2.53	0.44
1:C:72:SER:HB3	1:C:75:LYS:HD2	1.99	0.44
1:D:156:GLU:HA	1:D:156:GLU:OE1	2.18	0.44
1:C:277:GLU:OE1	1:C:277:GLU:N	2.33	0.44
1:J:168:VAL:HG12	1:J:187:ALA:HB2	2.00	0.43
1:C:128:VAL:HG22	1:C:192:CYS:HB3	1.99	0.43
1:J:296:ARG:HB2	1:J:296:ARG:CZ	2.48	0.43

*Continued on next page...*

Continued from previous page...

Atom-1	Atom-2	Interatomic distance (Å)	Clash overlap (Å)
1:J:177:LEU:N	1:J:177:LEU:HD12	2.33	0.43
1:C:149:LEU:HD21	1:C:185:LEU:HD11	2.00	0.43
1:J:135:PHE:CE2	1:J:137:PRO:CB	3.00	0.42
1:D:241:LEU:HG	1:D:243:LYS:H	1.84	0.42
1:C:128:VAL:HG21	1:C:144:LEU:HD22	2.01	0.42
1:C:243:LYS:HD2	1:C:243:LYS:HA	1.88	0.42
1:J:110:LYS:HB3	1:J:281:HIS:NE2	2.35	0.42
1:J:292:CYS:SG	1:J:296:ARG:NH1	2.93	0.42
1:D:80:TYR:CE2	1:D:269:VAL:HG11	2.55	0.42
1:A:168:VAL:HG12	1:A:187:ALA:HB2	2.01	0.42
1:J:251:ARG:O	1:J:280:GLN:HG3	2.20	0.42
1:A:119:MET:HG2	1:A:120:GLU:O	2.20	0.41
1:C:240:HIS:N	1:C:240:HIS:ND1	2.68	0.41
1:A:168:VAL:HG13	1:A:218:LEU:HD23	2.03	0.41
1:J:119:MET:HE3	1:J:119:MET:HB3	1.91	0.40
1:C:161:ALA:HB2	1:C:182:VAL:HB	2.03	0.40
1:C:122:PRO:HA	1:C:123:PRO:HD3	1.97	0.40
1:D:250:ALA:HB3	1:D:283:ALA:HB2	2.03	0.40

There are no symmetry-related clashes.

## 5.3 Torsion angles [i](#)

### 5.3.1 Protein backbone [i](#)

In the following table, the Percentiles column shows the percent Ramachandran outliers of the chain as a percentile score with respect to all X-ray entries followed by that with respect to entries of similar resolution.

The Analysed column shows the number of residues for which the backbone conformation was analysed, and the total number of residues.

Mol	Chain	Analysed	Favoured	Allowed	Outliers	Percentiles	
1	A	208/236 (88%)	197 (95%)	10 (5%)	1 (0%)	29	50
1	C	192/236 (81%)	182 (95%)	10 (5%)	0	100	100
1	D	201/236 (85%)	190 (94%)	10 (5%)	1 (0%)	29	50
1	J	209/236 (89%)	199 (95%)	10 (5%)	0	100	100
All	All	810/944 (86%)	768 (95%)	40 (5%)	2 (0%)	47	69

All (2) Ramachandran outliers are listed below:

Mol	Chain	Res	Type
1	D	203	PRO
1	A	203	PRO

### 5.3.2 Protein sidechains [i](#)

In the following table, the Percentiles column shows the percent sidechain outliers of the chain as a percentile score with respect to all X-ray entries followed by that with respect to entries of similar resolution.

The Analysed column shows the number of residues for which the sidechain conformation was analysed, and the total number of residues.

Mol	Chain	Analysed	Rotameric	Outliers	Percentiles	
1	A	186/212 (88%)	181 (97%)	5 (3%)	44	69
1	C	179/212 (84%)	173 (97%)	6 (3%)	37	61
1	D	183/212 (86%)	180 (98%)	3 (2%)	62	81
1	J	193/212 (91%)	185 (96%)	8 (4%)	30	55
All	All	741/848 (87%)	719 (97%)	22 (3%)	41	66

All (22) residues with a non-rotameric sidechain are listed below:

Mol	Chain	Res	Type
1	J	71	ARG
1	J	119	MET
1	J	125	ARG
1	J	181	SER
1	J	244	ASN
1	J	261	LYS
1	J	284	SER
1	J	292	CYS
1	C	104	SER
1	C	106	ARG
1	C	134	CYS
1	C	240	HIS
1	C	246	ARG
1	C	261	LYS
1	A	72	SER
1	A	119	MET
1	A	125	ARG
1	A	174	GLU
1	A	251	ARG
1	D	103	GLU

*Continued on next page...*

*Continued from previous page...*

Mol	Chain	Res	Type
1	D	134	CYS
1	D	251	ARG

Sometimes sidechains can be flipped to improve hydrogen bonding and reduce clashes. All (2) such sidechains are listed below:

Mol	Chain	Res	Type
1	J	244	ASN
1	C	281	HIS

### 5.3.3 RNA [i](#)

There are no RNA molecules in this entry.

## 5.4 Non-standard residues in protein, DNA, RNA chains [i](#)

There are no non-standard protein/DNA/RNA residues in this entry.

## 5.5 Carbohydrates [i](#)

There are no monosaccharides in this entry.

## 5.6 Ligand geometry [i](#)

4 ligands are modelled in this entry.

In the following table, the Counts columns list the number of bonds (or angles) for which Mogul statistics could be retrieved, the number of bonds (or angles) that are observed in the model and the number of bonds (or angles) that are defined in the Chemical Component Dictionary. The Link column lists molecule types, if any, to which the group is linked. The Z score for a bond length (or angle) is the number of standard deviations the observed value is removed from the expected value. A bond length (or angle) with  $|Z| > 2$  is considered an outlier worth inspection. RMSZ is the root-mean-square of all Z scores of the bond lengths (or angles).

Mol	Type	Chain	Res	Link	Bond lengths			Bond angles		
					Counts	RMSZ	$\# Z  > 2$	Counts	RMSZ	$\# Z  > 2$
2	SAM	J	401	-	24,29,29	2.88	8 (33%)	23,42,42	1.87	6 (26%)
2	SAM	C	401	-	24,29,29	3.06	7 (29%)	23,42,42	1.78	6 (26%)
2	SAM	D	401	-	24,29,29	3.06	7 (29%)	23,42,42	1.77	7 (30%)
2	SAM	A	401	-	24,29,29	2.82	7 (29%)	23,42,42	1.76	5 (21%)

In the following table, the Chirals column lists the number of chiral outliers, the number of chiral centers analysed, the number of these observed in the model and the number defined in the Chemical Component Dictionary. Similar counts are reported in the Torsion and Rings columns. '-' means no outliers of that kind were identified.

Mol	Type	Chain	Res	Link	Chirals	Torsions	Rings
2	SAM	J	401	-	-	9/12/33/33	0/3/3/3
2	SAM	C	401	-	-	5/12/33/33	0/3/3/3
2	SAM	D	401	-	-	7/12/33/33	0/3/3/3
2	SAM	A	401	-	-	6/12/33/33	0/3/3/3

All (29) bond length outliers are listed below:

Mol	Chain	Res	Type	Atoms	Z	Observed(Å)	Ideal(Å)
2	J	401	SAM	C4-N3	-9.36	1.22	1.35
2	C	401	SAM	C4-N3	-9.34	1.22	1.35
2	A	401	SAM	C4-N3	-9.28	1.22	1.35
2	D	401	SAM	C4-N3	-9.10	1.23	1.35
2	D	401	SAM	O4'-C1'	8.51	1.53	1.41
2	C	401	SAM	O4'-C1'	8.22	1.52	1.41
2	J	401	SAM	O4'-C1'	7.00	1.50	1.41
2	A	401	SAM	O4'-C1'	6.70	1.50	1.41
2	D	401	SAM	C2'-C1'	-4.31	1.47	1.53
2	C	401	SAM	C2'-C1'	-4.17	1.47	1.53
2	D	401	SAM	C2-N1	3.80	1.41	1.33
2	C	401	SAM	C2-N1	3.71	1.40	1.33
2	J	401	SAM	C2'-C1'	-3.71	1.48	1.53
2	J	401	SAM	C2-N1	3.49	1.40	1.33
2	A	401	SAM	C2-N1	3.48	1.40	1.33
2	A	401	SAM	C2'-C1'	-3.12	1.49	1.53
2	D	401	SAM	C6-N6	3.08	1.45	1.34
2	C	401	SAM	C6-N6	3.08	1.45	1.34
2	A	401	SAM	C6-N6	3.02	1.45	1.34
2	J	401	SAM	C6-N6	2.91	1.44	1.34
2	C	401	SAM	C2'-C3'	-2.46	1.46	1.53
2	A	401	SAM	C2'-C3'	-2.44	1.46	1.53
2	D	401	SAM	C2'-C3'	-2.34	1.46	1.53
2	A	401	SAM	C5-C4	-2.33	1.34	1.40
2	J	401	SAM	C5-C4	-2.32	1.34	1.40
2	J	401	SAM	C2'-C3'	-2.29	1.47	1.53
2	C	401	SAM	C5-C4	-2.29	1.34	1.40
2	D	401	SAM	C5-C4	-2.23	1.35	1.40
2	J	401	SAM	O4'-C4'	2.05	1.49	1.45

All (24) bond angle outliers are listed below:

Mol	Chain	Res	Type	Atoms	Z	Observed(°)	Ideal(°)
2	J	401	SAM	C4-C5-N7	-4.02	105.21	109.40
2	J	401	SAM	CG-SD-C5'	3.73	112.92	103.40
2	A	401	SAM	N3-C2-N1	-3.71	122.88	128.68
2	D	401	SAM	C4-C5-N7	-3.68	105.56	109.40
2	C	401	SAM	C4-C5-N7	-3.61	105.64	109.40
2	C	401	SAM	N3-C2-N1	-3.59	123.06	128.68
2	D	401	SAM	N3-C2-N1	-3.53	123.16	128.68
2	J	401	SAM	N3-C2-N1	-3.46	123.27	128.68
2	A	401	SAM	C4-C5-N7	-3.45	105.80	109.40
2	C	401	SAM	C1'-N9-C4	-3.39	120.68	126.64
2	A	401	SAM	C1'-N9-C4	-3.33	120.80	126.64
2	D	401	SAM	C1'-N9-C4	-3.17	121.07	126.64
2	J	401	SAM	C1'-N9-C4	-3.16	121.08	126.64
2	J	401	SAM	C2-N1-C6	-2.41	114.63	118.75
2	A	401	SAM	C3'-C2'-C1'	2.31	104.45	100.98
2	C	401	SAM	OXT-C-O	-2.18	119.13	124.09
2	A	401	SAM	C2'-C3'-C4'	2.18	106.89	102.64
2	D	401	SAM	C2'-C3'-C4'	2.15	106.82	102.64
2	C	401	SAM	C3'-C2'-C1'	2.13	104.18	100.98
2	J	401	SAM	C2'-C3'-C4'	2.11	106.74	102.64
2	D	401	SAM	C2-N1-C6	-2.05	115.24	118.75
2	D	401	SAM	OXT-C-CA	2.03	120.31	113.38
2	D	401	SAM	CG-SD-C5'	2.02	108.56	103.40
2	C	401	SAM	OXT-C-CA	2.01	120.21	113.38

There are no chirality outliers.

All (27) torsion outliers are listed below:

Mol	Chain	Res	Type	Atoms
2	J	401	SAM	O-C-CA-N
2	J	401	SAM	C4'-C5'-SD-CG
2	J	401	SAM	O4'-C4'-C5'-SD
2	J	401	SAM	C3'-C4'-C5'-SD
2	C	401	SAM	CB-CG-SD-CE
2	C	401	SAM	CB-CG-SD-C5'
2	A	401	SAM	CB-CG-SD-CE
2	A	401	SAM	CB-CG-SD-C5'
2	A	401	SAM	O4'-C4'-C5'-SD
2	A	401	SAM	C3'-C4'-C5'-SD
2	D	401	SAM	CB-CG-SD-CE
2	D	401	SAM	CB-CG-SD-C5'

*Continued on next page...*

*Continued from previous page...*

Mol	Chain	Res	Type	Atoms
2	J	401	SAM	OXT-C-CA-N
2	D	401	SAM	O-C-CA-CB
2	D	401	SAM	OXT-C-CA-CB
2	C	401	SAM	C-CA-CB-CG
2	C	401	SAM	O4'-C4'-C5'-SD
2	D	401	SAM	O4'-C4'-C5'-SD
2	J	401	SAM	CA-CB-CG-SD
2	D	401	SAM	C3'-C4'-C5'-SD
2	A	401	SAM	O-C-CA-CB
2	A	401	SAM	OXT-C-CA-CB
2	J	401	SAM	O-C-CA-CB
2	J	401	SAM	OXT-C-CA-CB
2	J	401	SAM	CB-CG-SD-CE
2	C	401	SAM	N-CA-CB-CG
2	D	401	SAM	OXT-C-CA-N

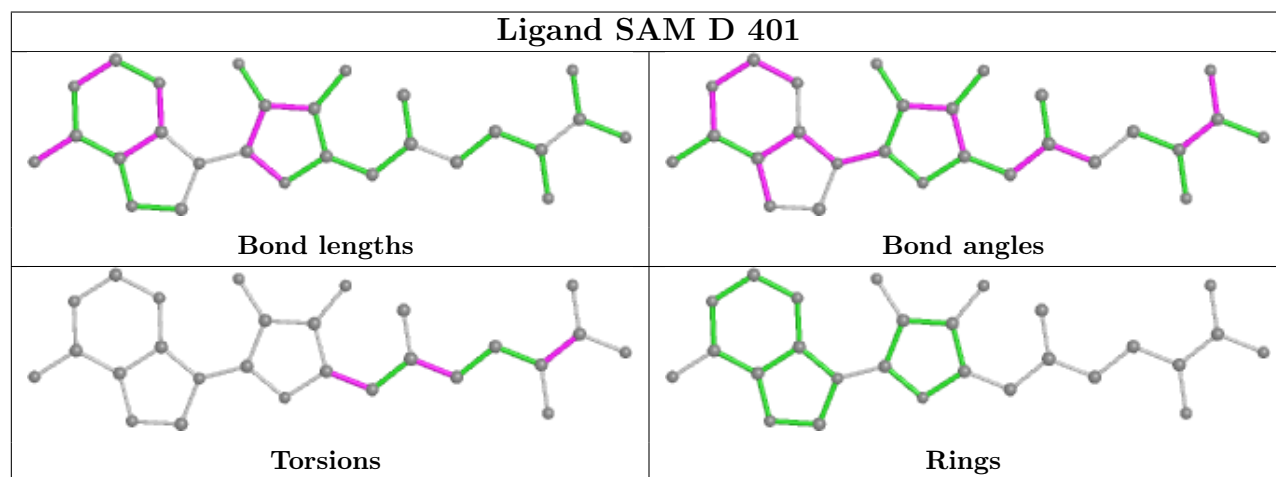
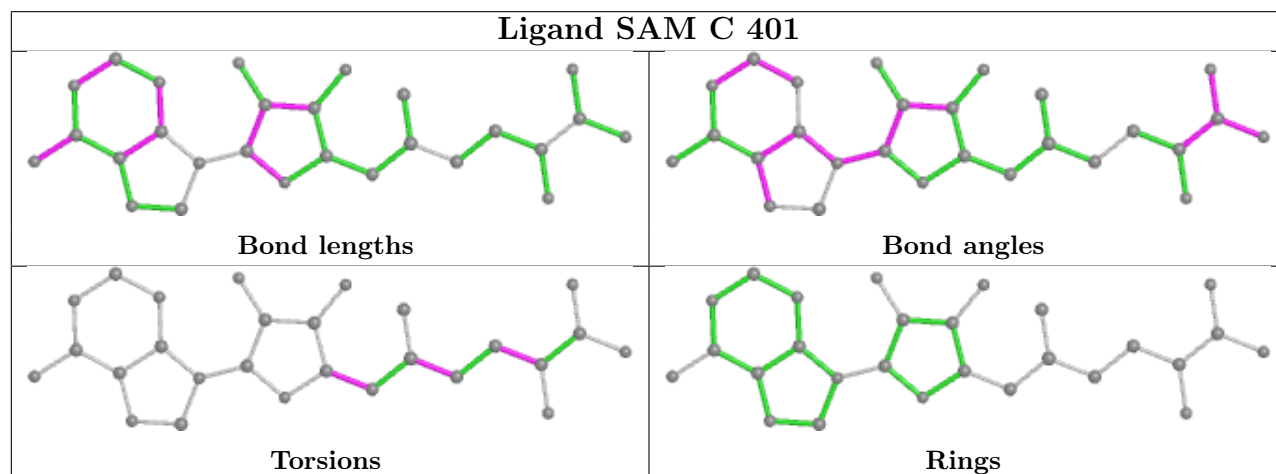
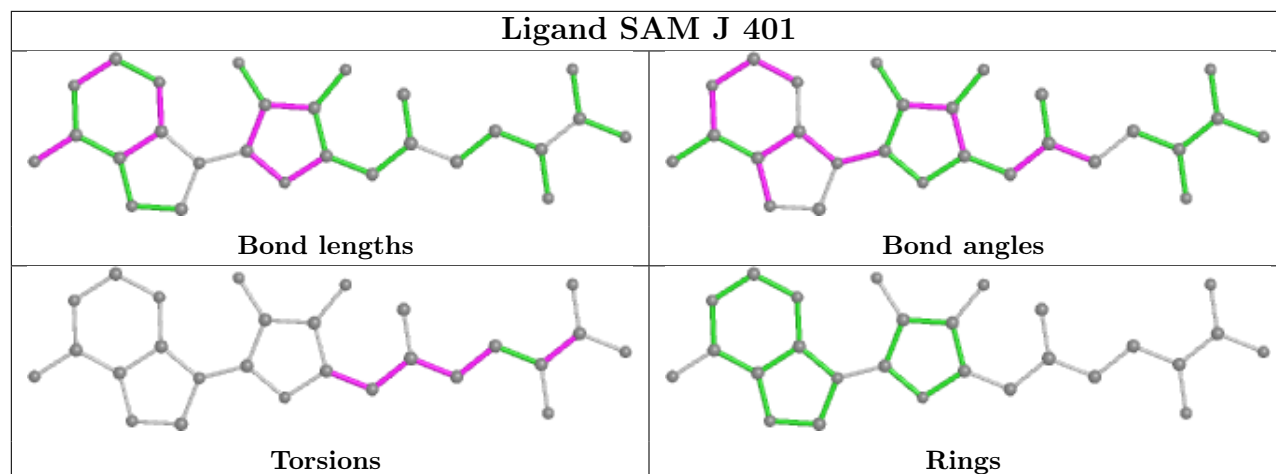
There are no ring outliers.

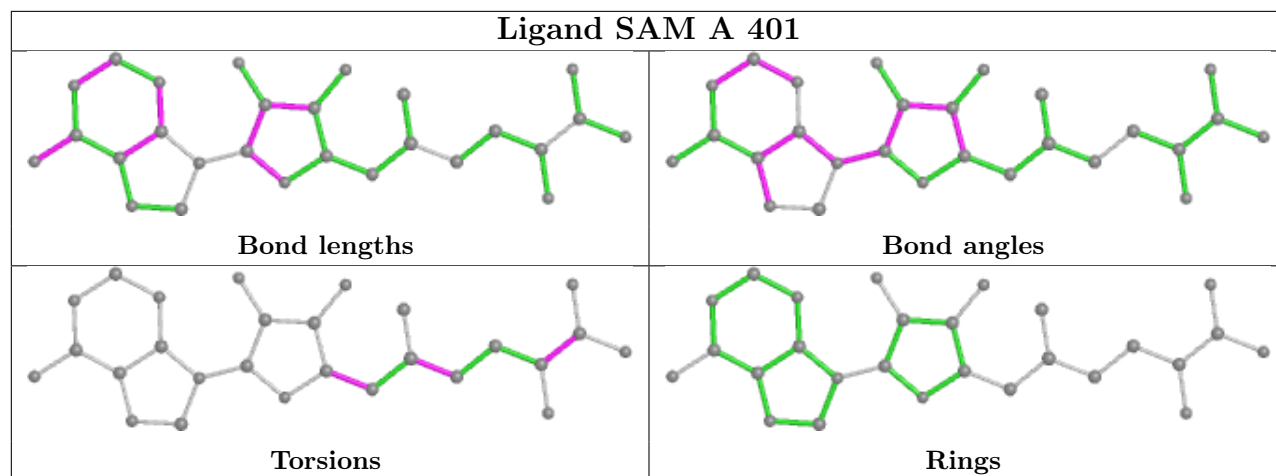
1 monomer is involved in 3 short contacts:

Mol	Chain	Res	Type	Clashes	Symm-Clashes
2	J	401	SAM	3	0

The following is a two-dimensional graphical depiction of Mogul quality analysis of bond lengths, bond angles, torsion angles, and ring geometry for all instances of the Ligand of Interest. In addition, ligands with molecular weight > 250 and outliers as shown on the validation Tables will also be included. For torsion angles, if less than 5% of the Mogul distribution of torsion angles is within 10 degrees of the torsion angle in question, then that torsion angle is considered an outlier. Any bond that is central to one or more torsion angles identified as an outlier by Mogul will be highlighted in the graph. For rings, the root-mean-square deviation (RMSD) between the ring in question and similar rings identified by Mogul is calculated over all ring torsion angles. If the average RMSD is greater than 60 degrees and the minimal RMSD between the ring in question and any Mogul-identified rings is also greater than 60 degrees, then that ring is considered an outlier. The outliers are highlighted in purple. The color gray indicates Mogul did not find sufficient equivalents in the CSD to analyse the geometry.







## 5.7 Other polymers [i](#)

There are no such residues in this entry.

## 5.8 Polymer linkage issues [i](#)

There are no chain breaks in this entry.

## 6 Fit of model and data

### 6.1 Protein, DNA and RNA chains

In the following table, the column labelled ‘#RSRZ > 2’ contains the number (and percentage) of RSRZ outliers, followed by percent RSRZ outliers for the chain as percentile scores relative to all X-ray entries and entries of similar resolution. The OWAB column contains the minimum, median, 95<sup>th</sup> percentile and maximum values of the occupancy-weighted average B-factor per residue. The column labelled ‘Q < 0.9’ lists the number of (and percentage) of residues with an average occupancy less than 0.9.

Mol	Chain	Analysed	<RSRZ>	#RSRZ>2	OWAB(Å <sup>2</sup> )	Q<0.9
1	A	216/236 (91%)	0.07	3 (1%) 75 71	18, 33, 59, 73	0
1	C	200/236 (84%)	0.27	13 (6%) 18 14	21, 40, 73, 89	0
1	D	205/236 (86%)	0.09	2 (0%) 82 80	23, 38, 70, 92	0
1	J	215/236 (91%)	0.18	5 (2%) 60 55	20, 34, 65, 77	0
All	All	836/944 (88%)	0.15	23 (2%) 53 47	18, 36, 69, 92	0

All (23) RSRZ outliers are listed below:

Mol	Chain	Res	Type	RSRZ
1	C	241	LEU	5.9
1	C	242	MET	3.7
1	C	245	TRP	3.3
1	A	298	PRO	3.2
1	C	230	PRO	3.1
1	C	202	MET	3.0
1	C	231	ASP	3.0
1	D	243	LYS	2.9
1	J	112	GLY	2.6
1	A	241	LEU	2.6
1	J	203	PRO	2.6
1	D	245	TRP	2.5
1	C	172	ILE	2.4
1	C	201	TYR	2.3
1	C	198	LEU	2.3
1	C	266	SER	2.3
1	C	133	SER	2.2
1	J	287	ARG	2.2
1	J	201	TYR	2.2
1	A	297	ILE	2.1
1	J	111	LEU	2.0

*Continued on next page...*

*Continued from previous page...*

Mol	Chain	Res	Type	RSRZ
1	C	281	HIS	2.0
1	C	243	LYS	2.0

## 6.2 Non-standard residues in protein, DNA, RNA chains [i](#)

There are no non-standard protein/DNA/RNA residues in this entry.

## 6.3 Carbohydrates [i](#)

There are no monosaccharides in this entry.

## 6.4 Ligands [i](#)

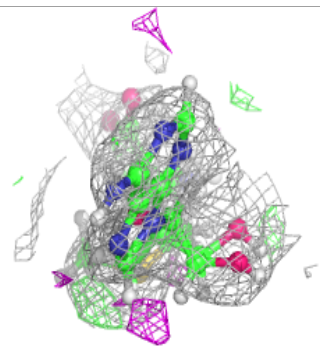
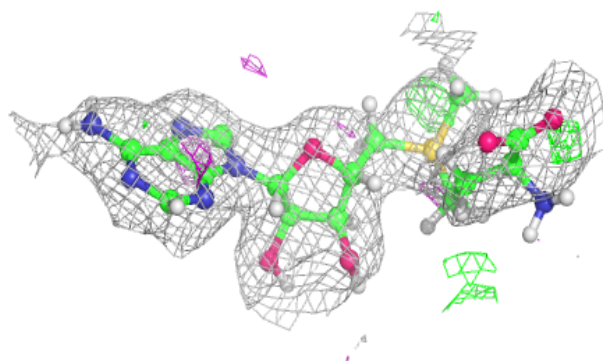
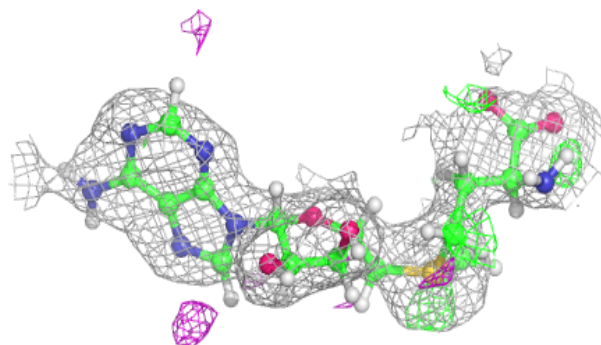
In the following table, the Atoms column lists the number of modelled atoms in the group and the number defined in the chemical component dictionary. The B-factors column lists the minimum, median, 95<sup>th</sup> percentile and maximum values of B factors of atoms in the group. The column labelled 'Q < 0.9' lists the number of atoms with occupancy less than 0.9.

Mol	Type	Chain	Res	Atoms	RSCC	RSR	B-factors(Å <sup>2</sup> )	Q<0.9
2	SAM	J	401	27/27	0.92	0.22	19,32,56,73	0
2	SAM	C	401	27/27	0.95	0.17	29,45,66,80	0
2	SAM	D	401	27/27	0.95	0.19	29,37,53,64	0
2	SAM	A	401	27/27	0.96	0.16	19,30,51,56	0

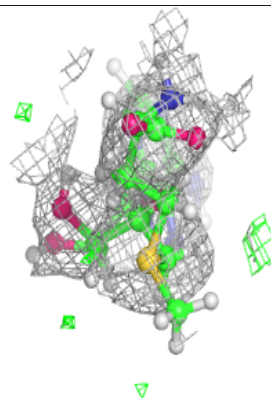
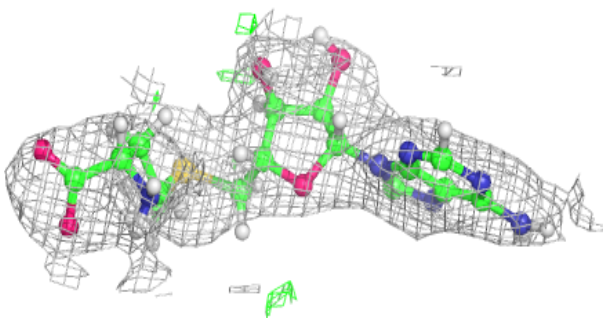
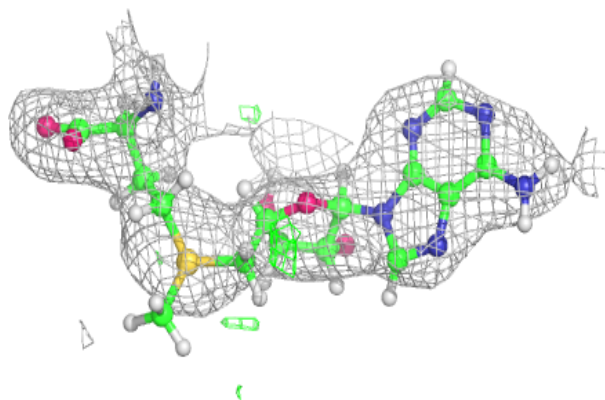
The following is a graphical depiction of the model fit to experimental electron density of all instances of the Ligand of Interest. In addition, ligands with molecular weight > 250 and outliers as shown on the geometry validation Tables will also be included. Each fit is shown from different orientation to approximate a three-dimensional view.

**Electron density around SAM J 401:**

$2mF_o-DF_c$  (at 0.7 rmsd) in gray  
 $mF_o-DF_c$  (at 3 rmsd) in purple (negative)  
and green (positive)

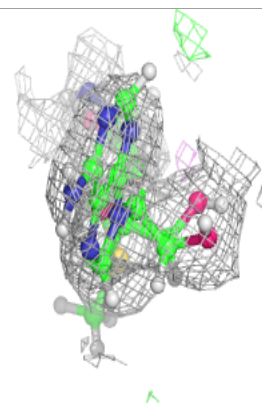
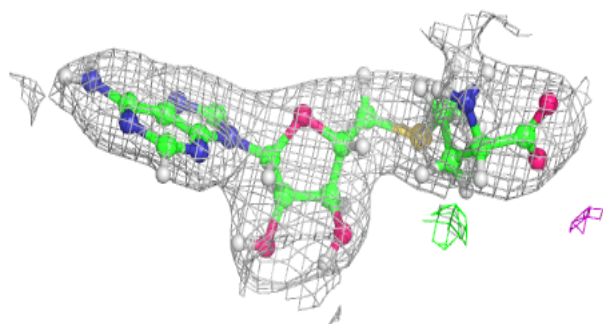
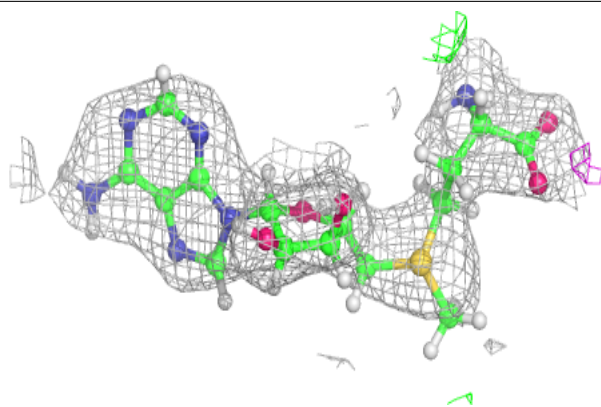
**Electron density around SAM C 401:**

$2mF_o-DF_c$  (at 0.7 rmsd) in gray  
 $mF_o-DF_c$  (at 3 rmsd) in purple (negative)  
and green (positive)

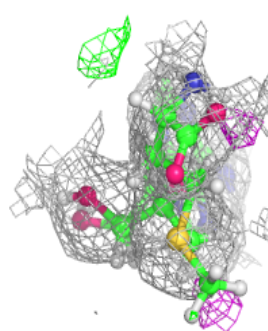
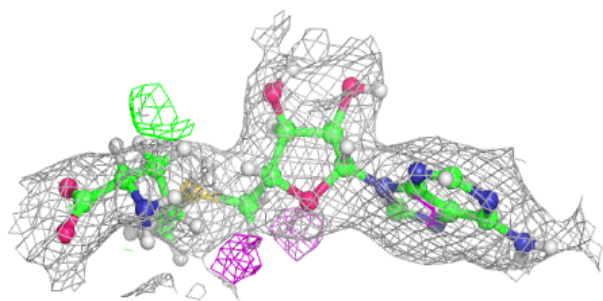
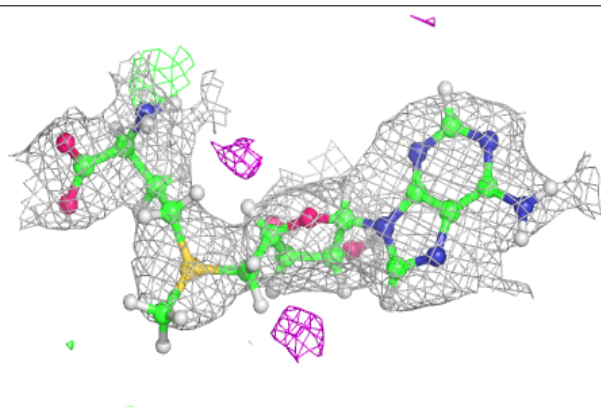


**Electron density around SAM D 401:**

$2mF_o-DF_c$  (at 0.7 rmsd) in gray  
 $mF_o-DF_c$  (at 3 rmsd) in purple (negative)  
and green (positive)

**Electron density around SAM A 401:**

$2mF_o-DF_c$  (at 0.7 rmsd) in gray  
 $mF_o-DF_c$  (at 3 rmsd) in purple (negative)  
and green (positive)



## 6.5 Other polymers [i](#)

There are no such residues in this entry.