



# wwPDB X-ray Structure Validation Summary Report ⓘ

Nov 13, 2023 – 08:46 PM JST

PDB ID : 5Y4R  
Title : Structure of a methyltransferase complex  
Authors : Yan, X.; Xin, L.; Tan, Y.J.; Jin, S.; Liang, Z.X.; Gao, Y.G.  
Deposited on : 2017-08-04  
Resolution : 2.30 Å(reported)

This is a wwPDB X-ray Structure Validation Summary Report for a publicly released PDB entry.

We welcome your comments at [validation@mail.wwpdb.org](mailto:validation@mail.wwpdb.org)

A user guide is available at

<https://www.wwpdb.org/validation/2017/XrayValidationReportHelp>

with specific help available everywhere you see the ⓘ symbol.

The types of validation reports are described at

<http://www.wwpdb.org/validation/2017/FAQs#types>.

---

The following versions of software and data (see [references ⓘ](#)) were used in the production of this report:

MolProbity : 4.02b-467  
Mogul : 1.8.5 (274361), CSD as541be (2020)  
Xtriage (Phenix) : 1.13  
EDS : 2.36  
buster-report : 1.1.7 (2018)  
Percentile statistics : 20191225.v01 (using entries in the PDB archive December 25th 2019)  
Refmac : 5.8.0158  
CCP4 : 7.0.044 (Gargrove)  
Ideal geometry (proteins) : Engh & Huber (2001)  
Ideal geometry (DNA, RNA) : Parkinson et al. (1996)  
Validation Pipeline (wwPDB-VP) : 2.36

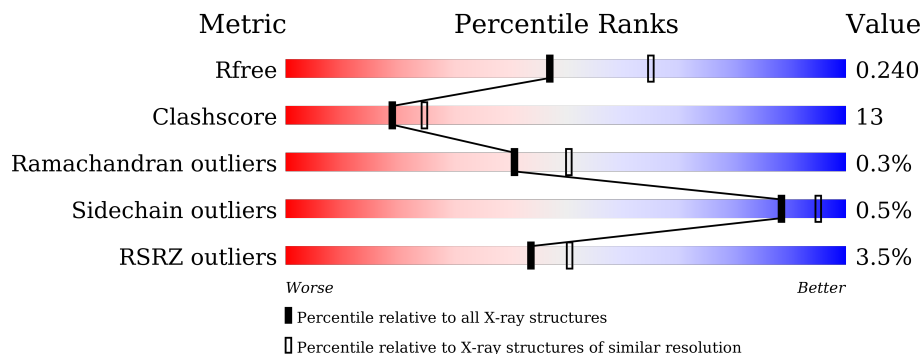
# 1 Overall quality at a glance

The following experimental techniques were used to determine the structure:

*X-RAY DIFFRACTION*

The reported resolution of this entry is 2.30 Å.

Percentile scores (ranging between 0-100) for global validation metrics of the entry are shown in the following graphic. The table shows the number of entries on which the scores are based.



Metric	Whole archive (#Entries)	Similar resolution (#Entries, resolution range(Å))
$R_{free}$	130704	5042 (2.30-2.30)
Clashscore	141614	5643 (2.30-2.30)
Ramachandran outliers	138981	5575 (2.30-2.30)
Sidechain outliers	138945	5575 (2.30-2.30)
RSRZ outliers	127900	4938 (2.30-2.30)

The table below summarises the geometric issues observed across the polymeric chains and their fit to the electron density. The red, orange, yellow and green segments of the lower bar indicate the fraction of residues that contain outliers for  $\geq 3$ , 2, 1 and 0 types of geometric quality criteria respectively. A grey segment represents the fraction of residues that are not modelled. The numeric value for each fraction is indicated below the corresponding segment, with a dot representing fractions  $\leq 5\%$ . The upper red bar (where present) indicates the fraction of residues that have poor fit to the electron density. The numeric value is given above the bar.

Mol	Chain	Length	Quality of chain
1	A	294	 3% 67% 26% 7%
1	B	294	 3% 67% 26% 7%
2	C	145	 3% 68% 13% 19%
2	D	145	 2% 68% 14% 18%

The following table lists non-polymeric compounds, carbohydrate monomers and non-standard residues in protein, DNA, RNA chains that are outliers for geometric or electron-density-fit crite-

ria:

Mol	Type	Chain	Res	Chirality	Geometry	Clashes	Electron density
3	SO4	B	301	-	-	X	-
3	SO4	B	304	-	-	-	X

## 2 Entry composition [i](#)

There are 5 unique types of molecules in this entry. The entry contains 6679 atoms, of which 26 are hydrogens and 0 are deuteriums.

In the tables below, the ZeroOcc column contains the number of atoms modelled with zero occupancy, the AltConf column contains the number of residues with at least one atom in alternate conformation and the Trace column contains the number of residues modelled with at most 2 atoms.

- Molecule 1 is a protein called Chemotaxis protein methyltransferase 1.

Mol	Chain	Residues	Atoms					ZeroOcc	AltConf	Trace
			Total	C	N	O	S			
1	A	273	2144	1362	379	391	12	0	0	0
1	B	272	2138	1359	378	389	12	0	0	0

There are 42 discrepancies between the modelled and reference sequences:

Chain	Residue	Modelled	Actual	Comment	Reference
A	-19	MET	-	expression tag	UNP O87131
A	-18	GLY	-	expression tag	UNP O87131
A	-17	SER	-	expression tag	UNP O87131
A	-16	SER	-	expression tag	UNP O87131
A	-15	HIS	-	expression tag	UNP O87131
A	-14	HIS	-	expression tag	UNP O87131
A	-13	HIS	-	expression tag	UNP O87131
A	-12	HIS	-	expression tag	UNP O87131
A	-11	HIS	-	expression tag	UNP O87131
A	-10	HIS	-	expression tag	UNP O87131
A	-9	SER	-	expression tag	UNP O87131
A	-8	GLN	-	expression tag	UNP O87131
A	-7	ASP	-	expression tag	UNP O87131
A	-6	PRO	-	expression tag	UNP O87131
A	-5	GLU	-	expression tag	UNP O87131
A	-4	ASN	-	expression tag	UNP O87131
A	-3	LEU	-	expression tag	UNP O87131
A	-2	TYR	-	expression tag	UNP O87131
A	-1	PHE	-	expression tag	UNP O87131
A	0	GLN	-	expression tag	UNP O87131
A	1	GLY	-	expression tag	UNP O87131
B	-19	MET	-	expression tag	UNP O87131
B	-18	GLY	-	expression tag	UNP O87131
B	-17	SER	-	expression tag	UNP O87131
B	-16	SER	-	expression tag	UNP O87131

*Continued on next page...*

*Continued from previous page...*

Chain	Residue	Modelled	Actual	Comment	Reference
B	-15	HIS	-	expression tag	UNP O87131
B	-14	HIS	-	expression tag	UNP O87131
B	-13	HIS	-	expression tag	UNP O87131
B	-12	HIS	-	expression tag	UNP O87131
B	-11	HIS	-	expression tag	UNP O87131
B	-10	HIS	-	expression tag	UNP O87131
B	-9	SER	-	expression tag	UNP O87131
B	-8	GLN	-	expression tag	UNP O87131
B	-7	ASP	-	expression tag	UNP O87131
B	-6	PRO	-	expression tag	UNP O87131
B	-5	GLU	-	expression tag	UNP O87131
B	-4	ASN	-	expression tag	UNP O87131
B	-3	LEU	-	expression tag	UNP O87131
B	-2	TYR	-	expression tag	UNP O87131
B	-1	PHE	-	expression tag	UNP O87131
B	0	GLN	-	expression tag	UNP O87131
B	1	GLY	-	expression tag	UNP O87131

- Molecule 2 is a protein called Cyclic diguanosine monophosphate-binding protein PA4608.

Mol	Chain	Residues	Atoms					ZeroOcc	AltConf	Trace	
2	D	119	Total	C	H	N	O	S	0	0	0
			1004	615	26	180	181	2			
2	C	118	Total	C	N	O	S	0	0	0	
			970	611	179	178	2				

There are 42 discrepancies between the modelled and reference sequences:

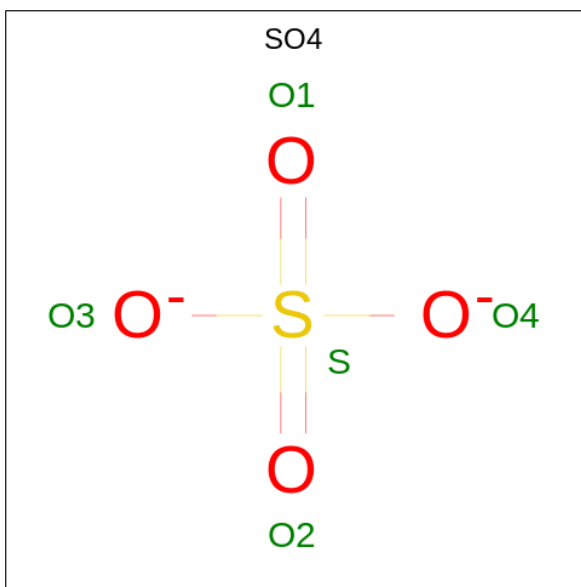
Chain	Residue	Modelled	Actual	Comment	Reference
D	-19	MET	-	expression tag	UNP Q9HVI1
D	-18	GLY	-	expression tag	UNP Q9HVI1
D	-17	SER	-	expression tag	UNP Q9HVI1
D	-16	SER	-	expression tag	UNP Q9HVI1
D	-15	HIS	-	expression tag	UNP Q9HVI1
D	-14	HIS	-	expression tag	UNP Q9HVI1
D	-13	HIS	-	expression tag	UNP Q9HVI1
D	-12	HIS	-	expression tag	UNP Q9HVI1
D	-11	HIS	-	expression tag	UNP Q9HVI1
D	-10	HIS	-	expression tag	UNP Q9HVI1
D	-9	SER	-	expression tag	UNP Q9HVI1
D	-8	GLN	-	expression tag	UNP Q9HVI1
D	-7	ASP	-	expression tag	UNP Q9HVI1

*Continued on next page...*

*Continued from previous page...*

Chain	Residue	Modelled	Actual	Comment	Reference
D	-6	PRO	-	expression tag	UNP Q9HVI1
D	-5	GLU	-	expression tag	UNP Q9HVI1
D	-4	ASN	-	expression tag	UNP Q9HVI1
D	-3	LEU	-	expression tag	UNP Q9HVI1
D	-2	TYR	-	expression tag	UNP Q9HVI1
D	-1	PHE	-	expression tag	UNP Q9HVI1
D	0	GLN	-	expression tag	UNP Q9HVI1
D	1	GLY	-	expression tag	UNP Q9HVI1
C	-19	MET	-	expression tag	UNP Q9HVI1
C	-18	GLY	-	expression tag	UNP Q9HVI1
C	-17	SER	-	expression tag	UNP Q9HVI1
C	-16	SER	-	expression tag	UNP Q9HVI1
C	-15	HIS	-	expression tag	UNP Q9HVI1
C	-14	HIS	-	expression tag	UNP Q9HVI1
C	-13	HIS	-	expression tag	UNP Q9HVI1
C	-12	HIS	-	expression tag	UNP Q9HVI1
C	-11	HIS	-	expression tag	UNP Q9HVI1
C	-10	HIS	-	expression tag	UNP Q9HVI1
C	-9	SER	-	expression tag	UNP Q9HVI1
C	-8	GLN	-	expression tag	UNP Q9HVI1
C	-7	ASP	-	expression tag	UNP Q9HVI1
C	-6	PRO	-	expression tag	UNP Q9HVI1
C	-5	GLU	-	expression tag	UNP Q9HVI1
C	-4	ASN	-	expression tag	UNP Q9HVI1
C	-3	LEU	-	expression tag	UNP Q9HVI1
C	-2	TYR	-	expression tag	UNP Q9HVI1
C	-1	PHE	-	expression tag	UNP Q9HVI1
C	0	GLN	-	expression tag	UNP Q9HVI1
C	1	GLY	-	expression tag	UNP Q9HVI1

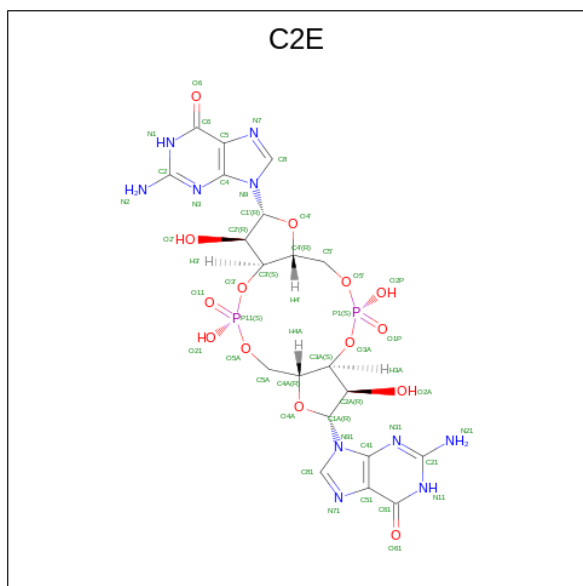
- Molecule 3 is SULFATE ION (three-letter code: SO4) (formula: O<sub>4</sub>S).



Mol	Chain	Residues	Atoms	ZeroOcc	AltConf
3	A	1	Total O S 5 4 1	0	0
3	A	1	Total O S 5 4 1	0	0
3	A	1	Total O S 5 4 1	0	0
3	A	1	Total O S 5 4 1	0	0
3	A	1	Total O S 5 4 1	0	0
3	B	1	Total O S 5 4 1	0	0
3	B	1	Total O S 5 4 1	0	0
3	B	1	Total O S 5 4 1	0	0
3	B	1	Total O S 5 4 1	0	0
3	B	1	Total O S 5 4 1	0	0
3	B	1	Total O S 5 4 1	0	0
3	B	1	Total O S 5 4 1	0	0

- Molecule 4 is 9,9'-[(2R,3R,3aS,5S,7aR,9R,10R,10aS,12S,14aR)-3,5,10,12-tetrahydroxy-5,12-dioxidoctahydro-2H,7H-difuro[3,2-d:3',2'-j][1,3,7,9,2,8]tetraoxadiphosphacyclododecine-2,9-diyl]bis(2-amino-1,9-dihydro-6H-purin-6-one) (three-letter code: C2E) (formula:

C<sub>20</sub>H<sub>24</sub>N<sub>10</sub>O<sub>14</sub>P<sub>2</sub>).



Mol	Chain	Residues	Atoms				ZeroOcc	AltConf	
			Total	C	N	O			P
4	D	1	Total	C	N	O	P	0	0
			46	20	10	14	2		
4	D	1	Total	C	N	O	P	0	0
			46	20	10	14	2		
4	C	1	Total	C	N	O	P	0	0
			46	20	10	14	2		
4	C	1	Total	C	N	O	P	0	0
			46	20	10	14	2		

- Molecule 5 is water.

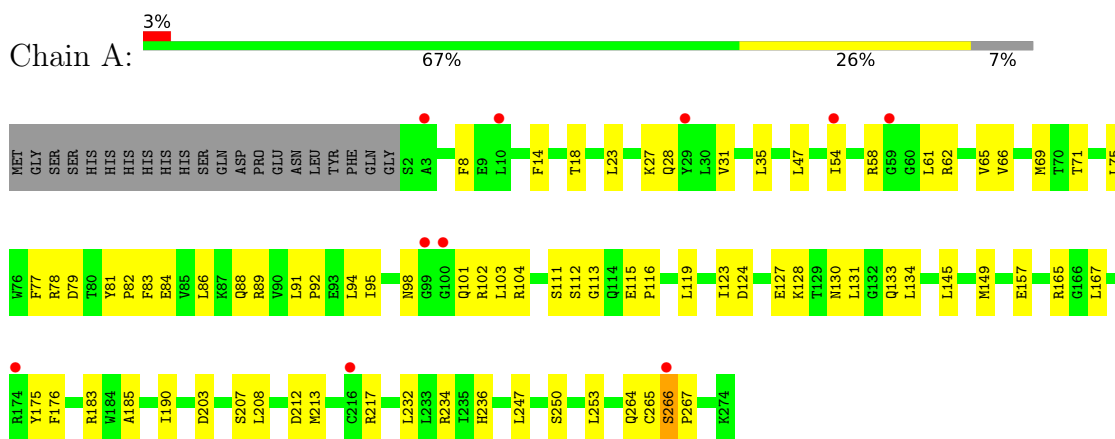
Mol	Chain	Residues	Atoms		ZeroOcc	AltConf
5	A	65	Total	O	0	0
			65	65		
5	D	31	Total	O	0	0
			31	31		
5	B	53	Total	O	0	0
			53	53		
5	C	30	Total	O	0	0
			30	30		



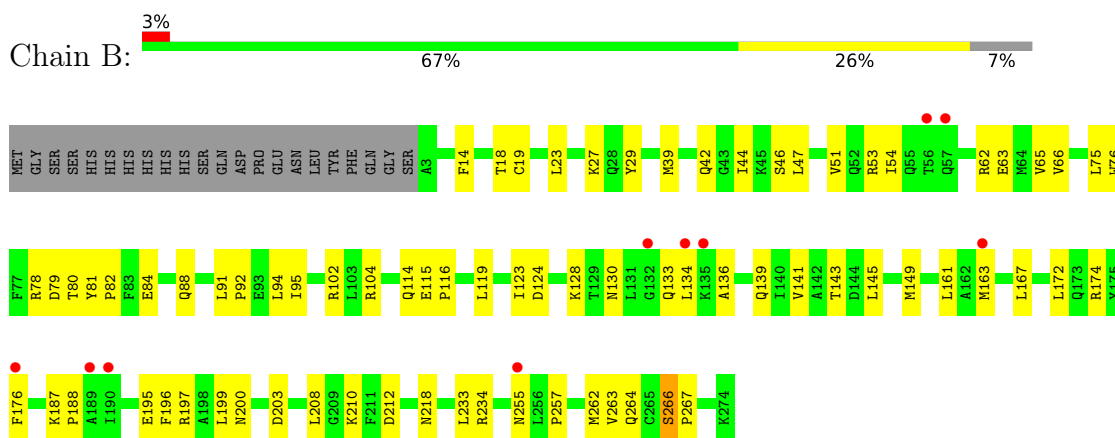
### 3 Residue-property plots

These plots are drawn for all protein, RNA, DNA and oligosaccharide chains in the entry. The first graphic for a chain summarises the proportions of the various outlier classes displayed in the second graphic. The second graphic shows the sequence view annotated by issues in geometry and electron density. Residues are color-coded according to the number of geometric quality criteria for which they contain at least one outlier: green = 0, yellow = 1, orange = 2 and red = 3 or more. A red dot above a residue indicates a poor fit to the electron density ( $RSRZ > 2$ ). Stretches of 2 or more consecutive residues without any outlier are shown as a green connector. Residues present in the sample, but not in the model, are shown in grey.

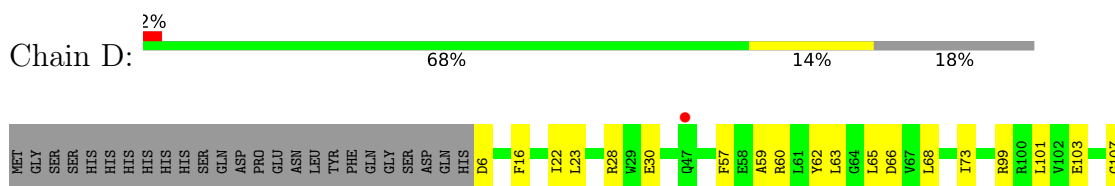
- Molecule 1: Chemotaxis protein methyltransferase 1



- Molecule 1: Chemotaxis protein methyltransferase 1



- Molecule 2: Cyclic diguanosine monophosphate-binding protein PA4608





- Molecule 2: Cyclic diguanosine monophosphate-binding protein PA4608



## 4 Data and refinement statistics

Property	Value	Source
Space group	P 21 21 21	Depositor
Cell constants a, b, c, $\alpha$ , $\beta$ , $\gamma$	88.52Å 98.93Å 110.65Å 90.00° 90.00° 90.00°	Depositor
Resolution (Å)	48.28 – 2.30 48.29 – 2.30	Depositor EDS
% Data completeness (in resolution range)	99.8 (48.28-2.30) 99.8 (48.29-2.30)	Depositor EDS
$R_{merge}$	(Not available)	Depositor
$R_{sym}$	(Not available)	Depositor
$\langle I/\sigma(I) \rangle$ <sup>1</sup>	1.05 (at 2.29Å)	Xtrriage
Refinement program	PHENIX 1.9_1692	Depositor
R, $R_{free}$	0.193 , 0.240 0.195 , 0.240	Depositor DCC
$R_{free}$ test set	4329 reflections (9.86%)	wwPDB-VP
Wilson B-factor (Å <sup>2</sup> )	50.7	Xtrriage
Anisotropy	0.172	Xtrriage
Bulk solvent $k_{sol}$ (e/Å <sup>3</sup> ), $B_{sol}$ (Å <sup>2</sup> )	0.34 , 42.1	EDS
L-test for twinning <sup>2</sup>	$\langle  L  \rangle = 0.51$ , $\langle L^2 \rangle = 0.34$	Xtrriage
Estimated twinning fraction	No twinning to report.	Xtrriage
$F_o, F_c$ correlation	0.95	EDS
Total number of atoms	6679	wwPDB-VP
Average B, all atoms (Å <sup>2</sup> )	57.0	wwPDB-VP

Xtrriage's analysis on translational NCS is as follows: *The largest off-origin peak in the Patterson function is 3.98% of the height of the origin peak. No significant pseudotranslation is detected.*

<sup>1</sup>Intensities estimated from amplitudes.

<sup>2</sup>Theoretical values of  $\langle |L| \rangle$ ,  $\langle L^2 \rangle$  for acentric reflections are 0.5, 0.333 respectively for untwinned datasets, and 0.375, 0.2 for perfectly twinned datasets.

## 5 Model quality [i](#)

### 5.1 Standard geometry [i](#)

Bond lengths and bond angles in the following residue types are not validated in this section: C2E, SO4

The Z score for a bond length (or angle) is the number of standard deviations the observed value is removed from the expected value. A bond length (or angle) with  $|Z| > 5$  is considered an outlier worth inspection. RMSZ is the root-mean-square of all Z scores of the bond lengths (or angles).

Mol	Chain	Bond lengths		Bond angles	
		RMSZ	# Z  >5	RMSZ	# Z  >5
1	A	0.30	0/2182	0.50	0/2939
1	B	0.29	0/2176	0.48	0/2931
2	C	0.32	0/989	0.49	0/1337
2	D	0.29	0/997	0.47	0/1348
All	All	0.30	0/6344	0.49	0/8555

There are no bond length outliers.

There are no bond angle outliers.

There are no chirality outliers.

There are no planarity outliers.

### 5.2 Too-close contacts [i](#)

In the following table, the Non-H and H(model) columns list the number of non-hydrogen atoms and hydrogen atoms in the chain respectively. The H(added) column lists the number of hydrogen atoms added and optimized by MolProbity. The Clashes column lists the number of clashes within the asymmetric unit, whereas Symm-Clashes lists symmetry-related clashes.

Mol	Chain	Non-H	H(model)	H(added)	Clashes	Symm-Clashes
1	A	2144	0	2180	69	0
1	B	2138	0	2175	70	0
2	C	970	0	950	19	0
2	D	978	26	954	20	0
3	A	25	0	0	0	0
3	B	35	0	0	4	0
4	C	92	0	44	5	0
4	D	92	0	44	0	0
5	A	65	0	0	6	0

*Continued on next page...*

Continued from previous page...

Mol	Chain	Non-H	H(model)	H(added)	Clashes	Symm-Clashes
5	B	53	0	0	4	0
5	C	30	0	0	1	0
5	D	31	0	0	2	0
All	All	6653	26	6347	167	0

The all-atom clashscore is defined as the number of clashes found per 1000 atoms (including hydrogen atoms). The all-atom clashscore for this structure is 13.

The worst 5 of 167 close contacts within the same asymmetric unit are listed below, sorted by their clash magnitude.

Atom-1	Atom-2	Interatomic distance (Å)	Clash overlap (Å)
1:A:54:ILE:HG23	1:A:62:ARG:HG2	1.41	1.01
1:A:145:LEU:HD13	2:D:103:GLU:HG2	1.44	1.00
1:B:54:ILE:HG23	1:B:62:ARG:HG2	1.49	0.95
1:A:165:ARG:O	5:A:401:HOH:O	1.85	0.95
1:A:264:GLN:OE1	5:A:402:HOH:O	1.86	0.94

There are no symmetry-related clashes.

## 5.3 Torsion angles [i](#)

### 5.3.1 Protein backbone [i](#)

In the following table, the Percentiles column shows the percent Ramachandran outliers of the chain as a percentile score with respect to all X-ray entries followed by that with respect to entries of similar resolution.

The Analysed column shows the number of residues for which the backbone conformation was analysed, and the total number of residues.

Mol	Chain	Analysed	Favoured	Allowed	Outliers	Percentiles	
1	A	271/294 (92%)	260 (96%)	10 (4%)	1 (0%)	34	42
1	B	270/294 (92%)	258 (96%)	11 (4%)	1 (0%)	34	42
2	C	116/145 (80%)	114 (98%)	2 (2%)	0	100	100
2	D	117/145 (81%)	114 (97%)	3 (3%)	0	100	100
All	All	774/878 (88%)	746 (96%)	26 (3%)	2 (0%)	41	50

All (2) Ramachandran outliers are listed below:

Mol	Chain	Res	Type
1	A	266	SER
1	B	266	SER

### 5.3.2 Protein sidechains [i](#)

In the following table, the Percentiles column shows the percent sidechain outliers of the chain as a percentile score with respect to all X-ray entries followed by that with respect to entries of similar resolution.

The Analysed column shows the number of residues for which the sidechain conformation was analysed, and the total number of residues.

Mol	Chain	Analysed	Rotameric	Outliers	Percentiles
1	A	227/246 (92%)	226 (100%)	1 (0%)	91 96
1	B	226/246 (92%)	226 (100%)	0	100 100
2	C	103/128 (80%)	102 (99%)	1 (1%)	76 87
2	D	104/128 (81%)	103 (99%)	1 (1%)	76 87
All	All	660/748 (88%)	657 (100%)	3 (0%)	88 95

All (3) residues with a non-rotameric sidechain are listed below:

Mol	Chain	Res	Type
1	A	58	ARG
2	D	99	ARG
2	C	99	ARG

Sometimes sidechains can be flipped to improve hydrogen bonding and reduce clashes. There are no such sidechains identified.

### 5.3.3 RNA [i](#)

There are no RNA molecules in this entry.

## 5.4 Non-standard residues in protein, DNA, RNA chains [i](#)

There are no non-standard protein/DNA/RNA residues in this entry.

## 5.5 Carbohydrates [i](#)

There are no monosaccharides in this entry.

## 5.6 Ligand geometry

16 ligands are modelled in this entry.

In the following table, the Counts columns list the number of bonds (or angles) for which Mogul statistics could be retrieved, the number of bonds (or angles) that are observed in the model and the number of bonds (or angles) that are defined in the Chemical Component Dictionary. The Link column lists molecule types, if any, to which the group is linked. The Z score for a bond length (or angle) is the number of standard deviations the observed value is removed from the expected value. A bond length (or angle) with  $|Z| > 2$  is considered an outlier worth inspection. RMSZ is the root-mean-square of all Z scores of the bond lengths (or angles).

Mol	Type	Chain	Res	Link	Bond lengths			Bond angles		
					Counts	RMSZ	# Z  > 2	Counts	RMSZ	# Z  > 2
3	SO4	A	301	-	4,4,4	0.18	0	6,6,6	0.20	0
4	C2E	C	201	-	44,52,52	5.17	21 (47%)	52,82,82	1.55	11 (21%)
3	SO4	A	303	-	4,4,4	0.17	0	6,6,6	0.27	0
3	SO4	B	304	-	4,4,4	0.15	0	6,6,6	0.08	0
3	SO4	B	302	-	4,4,4	0.14	0	6,6,6	0.08	0
4	C2E	D	202	-	44,52,52	5.20	21 (47%)	52,82,82	1.57	11 (21%)
4	C2E	D	201	-	44,52,52	5.16	23 (52%)	52,82,82	1.60	13 (25%)
3	SO4	A	305	-	4,4,4	0.13	0	6,6,6	0.06	0
3	SO4	A	304	-	4,4,4	0.13	0	6,6,6	0.12	0
3	SO4	B	305	-	4,4,4	0.14	0	6,6,6	0.13	0
3	SO4	B	303	-	4,4,4	0.15	0	6,6,6	0.15	0
3	SO4	B	306	-	4,4,4	0.14	0	6,6,6	0.07	0
3	SO4	A	302	-	4,4,4	0.18	0	6,6,6	0.14	0
3	SO4	B	301	-	4,4,4	0.14	0	6,6,6	0.21	0
4	C2E	C	202	-	44,52,52	5.20	21 (47%)	52,82,82	1.57	11 (21%)
3	SO4	B	307	-	4,4,4	0.14	0	6,6,6	0.08	0

In the following table, the Chirals column lists the number of chiral outliers, the number of chiral centers analysed, the number of these observed in the model and the number defined in the Chemical Component Dictionary. Similar counts are reported in the Torsion and Rings columns. '-' means no outliers of that kind were identified.

Mol	Type	Chain	Res	Link	Chirals	Torsions	Rings
4	C2E	D	202	-	-	5/22/62/62	0/6/7/7
4	C2E	C	201	-	-	2/22/62/62	0/6/7/7
4	C2E	D	201	-	-	2/22/62/62	0/6/7/7
4	C2E	C	202	-	-	4/22/62/62	0/6/7/7

The worst 5 of 86 bond length outliers are listed below:

Mol	Chain	Res	Type	Atoms	Z	Observed(Å)	Ideal(Å)
4	D	202	C2E	C2'-C1'	-15.63	1.30	1.53
4	D	201	C2E	C2'-C1'	-15.62	1.30	1.53
4	D	202	C2E	C2A-C1A	-15.52	1.30	1.53
4	C	202	C2E	O4'-C1'	15.41	1.62	1.41
4	C	202	C2E	C2A-C1A	-15.38	1.30	1.53

The worst 5 of 46 bond angle outliers are listed below:

Mol	Chain	Res	Type	Atoms	Z	Observed(°)	Ideal(°)
4	D	201	C2E	C51-C61-N11	3.50	120.13	113.95
4	D	202	C2E	C5-C6-N1	3.39	119.93	113.95
4	C	202	C2E	C5-C6-N1	3.38	119.92	113.95
4	D	202	C2E	C51-C61-N11	3.37	119.91	113.95
4	D	202	C2E	O21-P11-O3'	3.32	119.87	106.78

There are no chirality outliers.

5 of 13 torsion outliers are listed below:

Mol	Chain	Res	Type	Atoms
4	D	202	C2E	C5A-O5A-P11-O21
4	D	202	C2E	C5A-O5A-P11-O11
4	C	202	C2E	O4A-C4A-C5A-O5A
4	D	202	C2E	C5A-O5A-P11-O3'
4	D	202	C2E	O4A-C4A-C5A-O5A

There are no ring outliers.

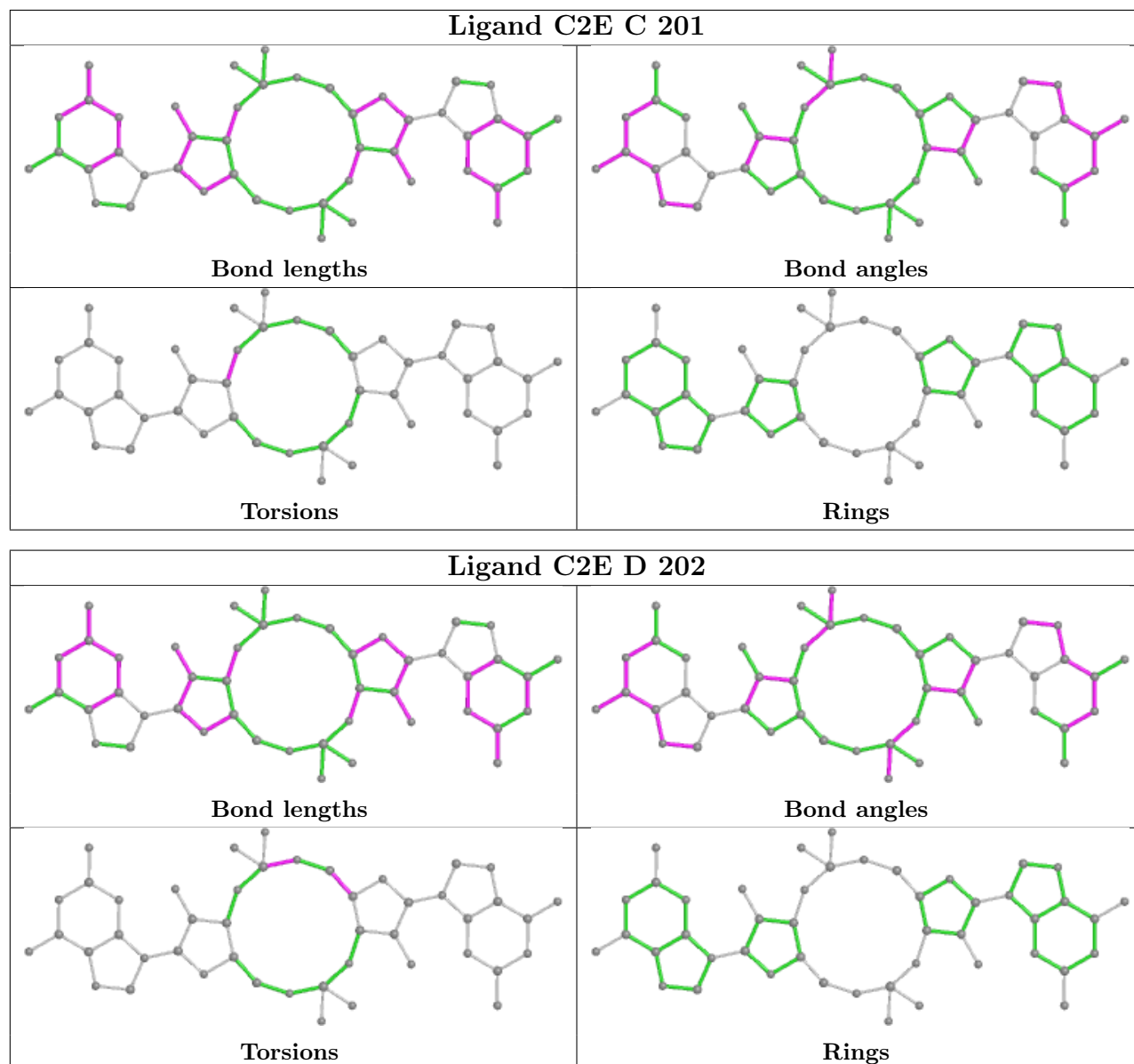
5 monomers are involved in 9 short contacts:

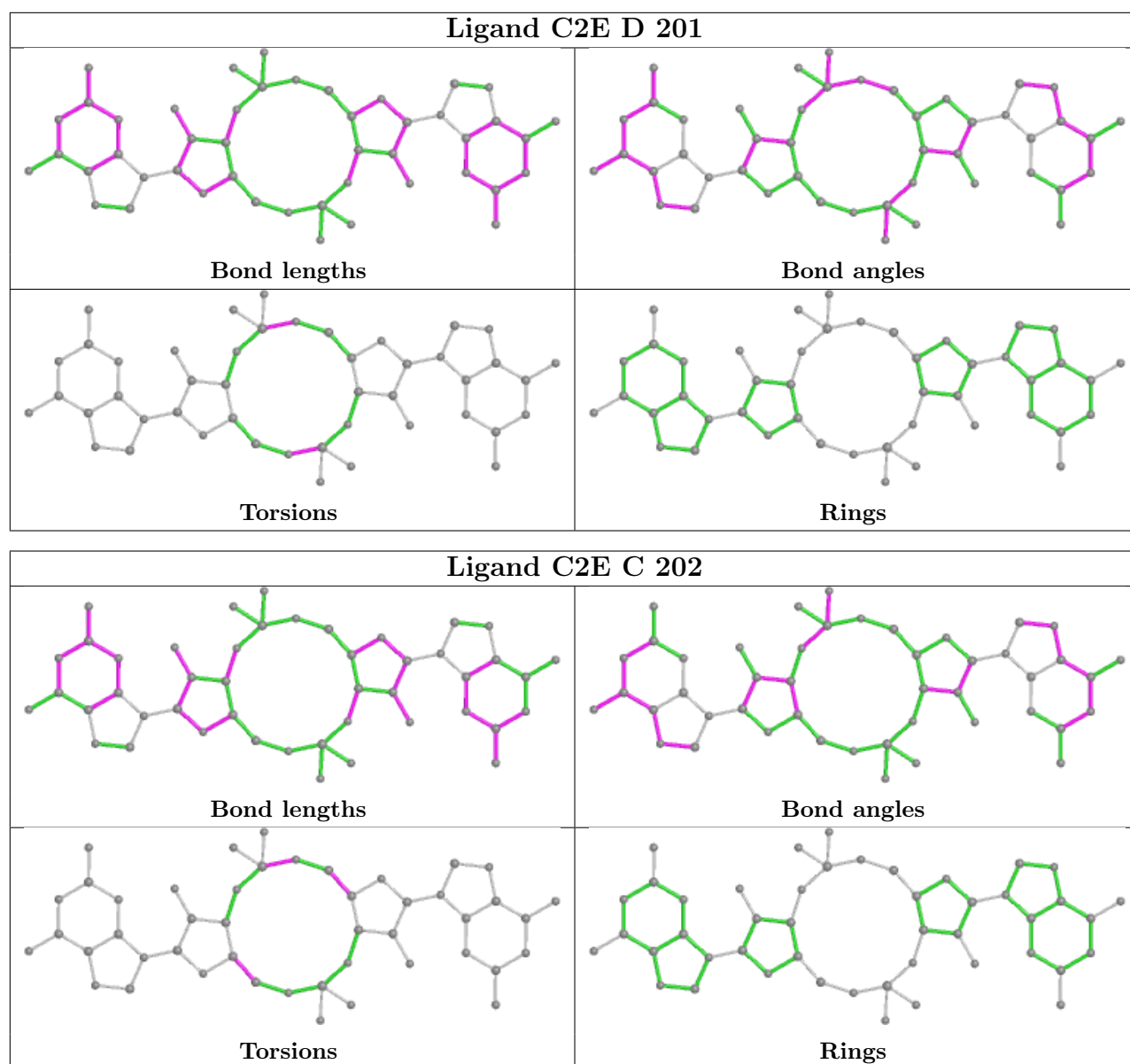
Mol	Chain	Res	Type	Clashes	Symm-Clashes
4	C	201	C2E	3	0
3	B	305	SO4	1	0
3	B	303	SO4	1	0
3	B	301	SO4	2	0
4	C	202	C2E	5	0

The following is a two-dimensional graphical depiction of Mogul quality analysis of bond lengths, bond angles, torsion angles, and ring geometry for all instances of the Ligand of Interest. In addition, ligands with molecular weight > 250 and outliers as shown on the validation Tables will also be included. For torsion angles, if less than 5% of the Mogul distribution of torsion angles is within 10 degrees of the torsion angle in question, then that torsion angle is considered an outlier. Any bond that is central to one or more torsion angles identified as an outlier by Mogul will be highlighted in the graph. For rings, the root-mean-square deviation (RMSD) between the ring



in question and similar rings identified by Mogul is calculated over all ring torsion angles. If the average RMSD is greater than 60 degrees and the minimal RMSD between the ring in question and any Mogul-identified rings is also greater than 60 degrees, then that ring is considered an outlier. The outliers are highlighted in purple. The color gray indicates Mogul did not find sufficient equivalents in the CSD to analyse the geometry.





## 5.7 Other polymers [i](#)

There are no such residues in this entry.

## 5.8 Polymer linkage issues [i](#)

There are no chain breaks in this entry.

## 6 Fit of model and data [i](#)

### 6.1 Protein, DNA and RNA chains [i](#)

In the following table, the column labelled ‘#RSRZ> 2’ contains the number (and percentage) of RSRZ outliers, followed by percent RSRZ outliers for the chain as percentile scores relative to all X-ray entries and entries of similar resolution. The OWAB column contains the minimum, median, 95<sup>th</sup> percentile and maximum values of the occupancy-weighted average B-factor per residue. The column labelled ‘Q< 0.9’ lists the number of (and percentage) of residues with an average occupancy less than 0.9.

Mol	Chain	Analysed	<RSRZ>	#RSRZ>2	OWAB(Å <sup>2</sup> )	Q<0.9
1	A	273/294 (92%)	0.21	10 (3%) 41 48	29, 50, 86, 115	0
1	B	272/294 (92%)	0.17	10 (3%) 41 48	32, 58, 103, 120	0
2	C	118/145 (81%)	0.02	4 (3%) 45 52	31, 47, 89, 102	0
2	D	119/145 (82%)	0.06	3 (2%) 57 64	35, 55, 88, 107	0
All	All	782/878 (89%)	0.15	27 (3%) 44 51	29, 53, 90, 120	0

The worst 5 of 27 RSRZ outliers are listed below:

Mol	Chain	Res	Type	RSRZ
1	B	57	GLN	10.0
2	D	47	GLN	3.9
1	A	99	GLY	3.8
1	A	29	TYR	3.8
1	A	216	CYS	3.6

### 6.2 Non-standard residues in protein, DNA, RNA chains [i](#)

There are no non-standard protein/DNA/RNA residues in this entry.

### 6.3 Carbohydrates [i](#)

There are no monosaccharides in this entry.

### 6.4 Ligands [i](#)

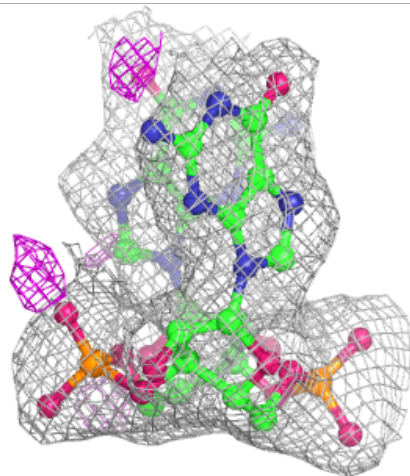
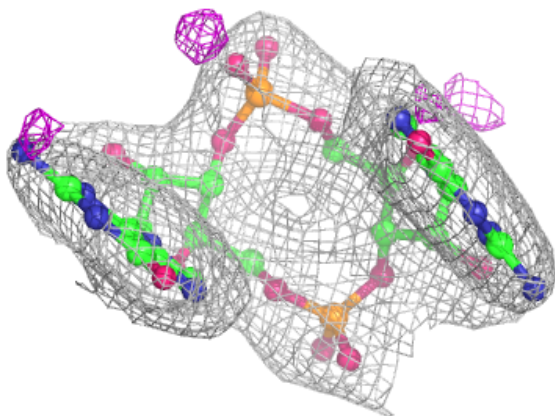
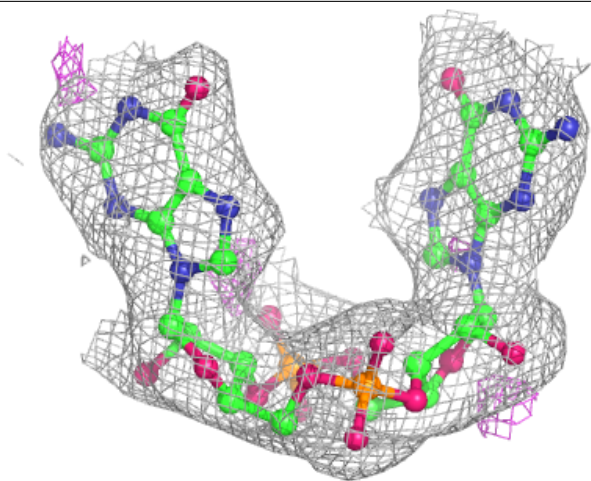
In the following table, the Atoms column lists the number of modelled atoms in the group and the number defined in the chemical component dictionary. The B-factors column lists the minimum, median, 95<sup>th</sup> percentile and maximum values of B factors of atoms in the group. The column labelled ‘Q< 0.9’ lists the number of atoms with occupancy less than 0.9.

Mol	Type	Chain	Res	Atoms	RSCC	RSR	B-factors( $\text{\AA}^2$ )	Q<0.9
3	SO4	B	305	5/5	0.58	0.26	90,97,98,100	0
3	SO4	B	304	5/5	0.65	0.51	92,95,98,99	0
3	SO4	A	302	5/5	0.72	0.22	74,92,98,99	0
3	SO4	B	302	5/5	0.74	0.31	96,103,106,111	0
3	SO4	B	301	5/5	0.92	0.24	76,79,81,90	0
3	SO4	A	305	5/5	0.92	0.21	87,94,94,96	0
3	SO4	B	306	5/5	0.92	0.18	90,92,97,102	0
3	SO4	B	307	5/5	0.92	0.22	100,101,103,104	0
3	SO4	B	303	5/5	0.94	0.18	61,63,81,84	0
4	C2E	C	202	46/46	0.95	0.11	37,57,69,75	0
4	C2E	D	202	46/46	0.96	0.11	34,46,55,68	0
4	C2E	D	201	46/46	0.97	0.10	29,47,56,65	0
3	SO4	A	301	5/5	0.97	0.07	52,60,63,65	0
3	SO4	A	304	5/5	0.97	0.15	62,78,81,82	0
4	C2E	C	201	46/46	0.98	0.11	38,47,56,57	0
3	SO4	A	303	5/5	0.99	0.16	42,42,44,50	0

The following is a graphical depiction of the model fit to experimental electron density of all instances of the Ligand of Interest. In addition, ligands with molecular weight > 250 and outliers as shown on the geometry validation Tables will also be included. Each fit is shown from different orientation to approximate a three-dimensional view.

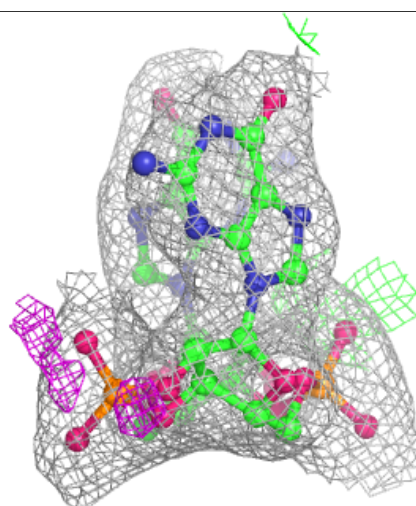
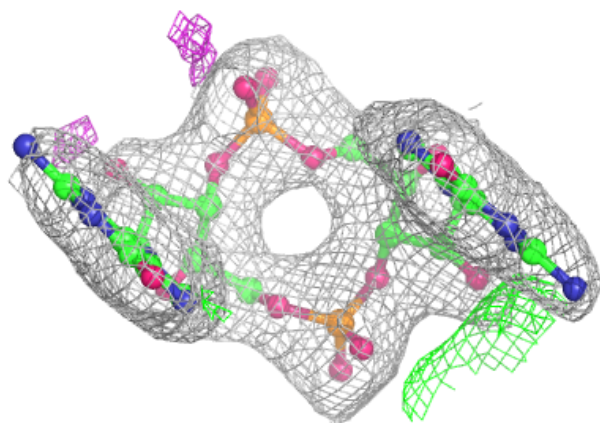
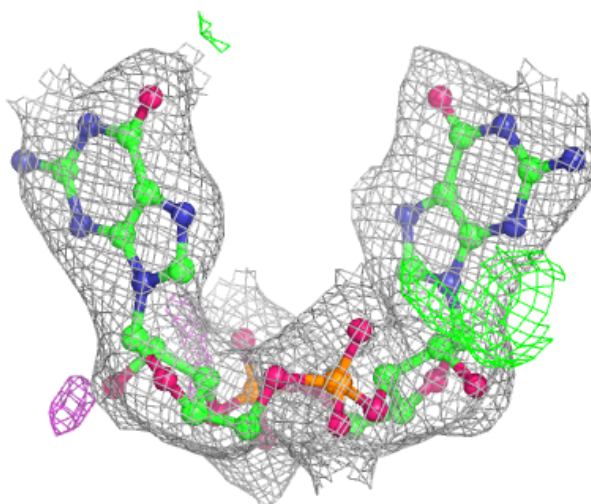
**Electron density around C2E C 202:**

$2mF_o-DF_c$  (at 0.7 rmsd) in gray  
 $mF_o-DF_c$  (at 3 rmsd) in purple (negative)  
and green (positive)



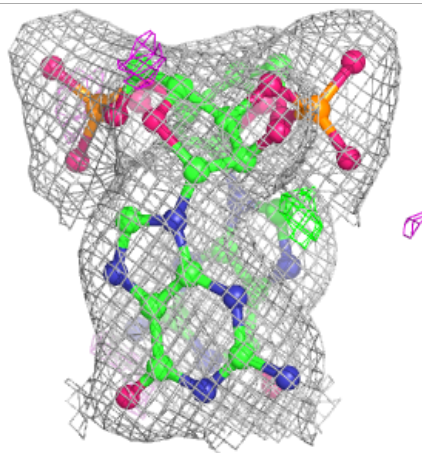
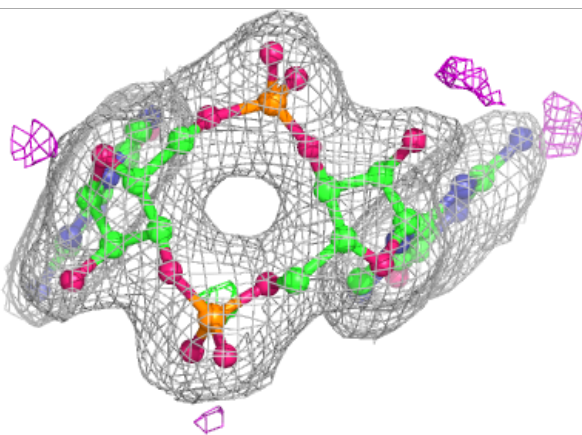
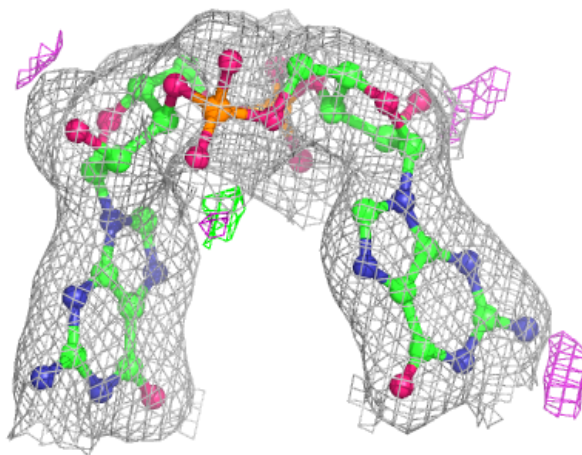
**Electron density around C2E D 202:**

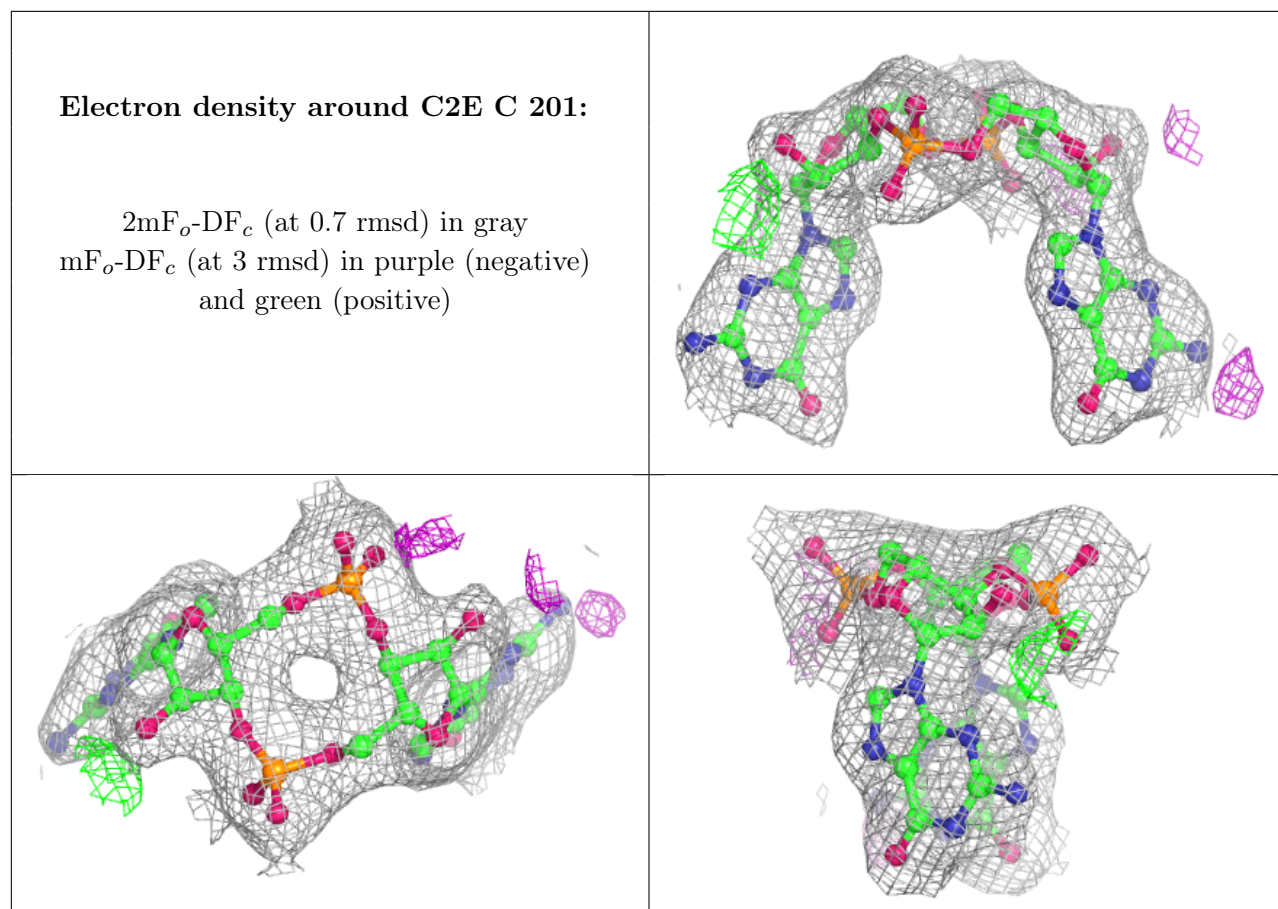
$2mF_o-DF_c$  (at 0.7 rmsd) in gray  
 $mF_o-DF_c$  (at 3 rmsd) in purple (negative)  
and green (positive)



**Electron density around C2E D 201:**

$2mF_o-DF_c$  (at 0.7 rmsd) in gray  
 $mF_o-DF_c$  (at 3 rmsd) in purple (negative)  
and green (positive)





## 6.5 Other polymers [i](#)

There are no such residues in this entry.