



# Full wwPDB X-ray Structure Validation Report ⓘ

Jun 14, 2020 – 07:44 pm BST

PDB ID : 2Y1W  
Title : CRYSTAL STRUCTURE OF COACTIVATOR ASSOCIATED ARGININE METHYLTRANSFERASE 1 (CARM1) IN COMPLEX WITH SINEFUNGIN AND INDOLE INHIBITOR  
Authors : Sack, J.S.; Thieffine, S.; Bandiera, T.; Fasolini, M.; Duke, G.J.; Jayaraman, L.; Kish, K.F.; Klei, H.E.; Purandare, A.V.; Rosettani, P.; Troiani, S.; Xie, D.; Bertrand, J.A.  
Deposited on : 2010-12-10  
Resolution : 2.10 Å(reported)

This is a Full wwPDB X-ray Structure Validation Report for a publicly released PDB entry.

We welcome your comments at [validation@mail.wwpdb.org](mailto:validation@mail.wwpdb.org)

A user guide is available at

<https://www.wwpdb.org/validation/2017/XrayValidationReportHelp>

with specific help available everywhere you see the ⓘ symbol.

---

The following versions of software and data (see [references ⓘ](#)) were used in the production of this report:

MolProbity : 4.02b-467  
Mogul : 1.8.5 (274361), CSD as541be (2020)  
Xtriage (Phenix) : 1.13  
EDS : 2.11  
buster-report : 1.1.7 (2018)  
Percentile statistics : 20191225.v01 (using entries in the PDB archive December 25th 2019)  
Refmac : 5.8.0158  
CCP4 : 7.0.044 (Gargrove)  
Ideal geometry (proteins) : Engh & Huber (2001)  
Ideal geometry (DNA, RNA) : Parkinson et al. (1996)  
Validation Pipeline (wwPDB-VP) : 2.11

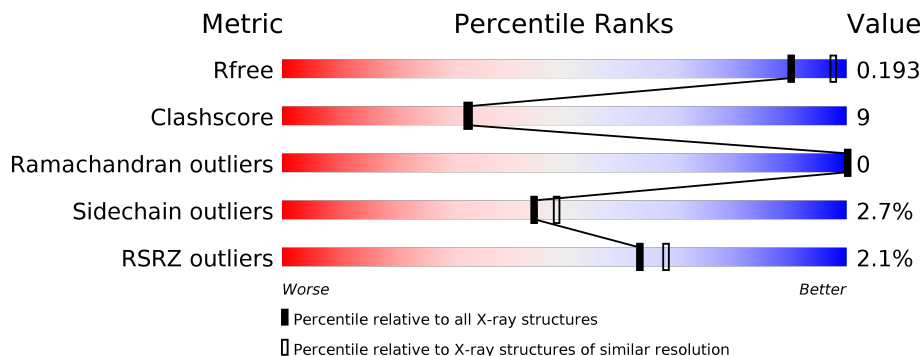
# 1 Overall quality at a glance

The following experimental techniques were used to determine the structure:

*X-RAY DIFFRACTION*

The reported resolution of this entry is 2.10 Å.

Percentile scores (ranging between 0-100) for global validation metrics of the entry are shown in the following graphic. The table shows the number of entries on which the scores are based.



Metric	Whole archive (#Entries)	Similar resolution (#Entries, resolution range(Å))
$R_{free}$	130704	5197 (2.10-2.10)
Clashscore	141614	5710 (2.10-2.10)
Ramachandran outliers	138981	5647 (2.10-2.10)
Sidechain outliers	138945	5648 (2.10-2.10)
RSRZ outliers	127900	5083 (2.10-2.10)

The table below summarises the geometric issues observed across the polymeric chains and their fit to the electron density. The red, orange, yellow and green segments on the lower bar indicate the fraction of residues that contain outliers for  $\geq 3$ , 2, 1 and 0 types of geometric quality criteria respectively. A grey segment represents the fraction of residues that are not modelled. The numeric value for each fraction is indicated below the corresponding segment, with a dot representing fractions  $\leq 5\%$ . The upper red bar (where present) indicates the fraction of residues that have poor fit to the electron density. The numeric value is given above the bar.

Mol	Chain	Length	Quality of chain
1	A	348	 3% 84% 14% ..
1	B	348	 % 81% 17% ..
1	C	348	 2% 79% 19% ..
1	D	348	 % 84% 14% ..

## 2 Entry composition [i](#)

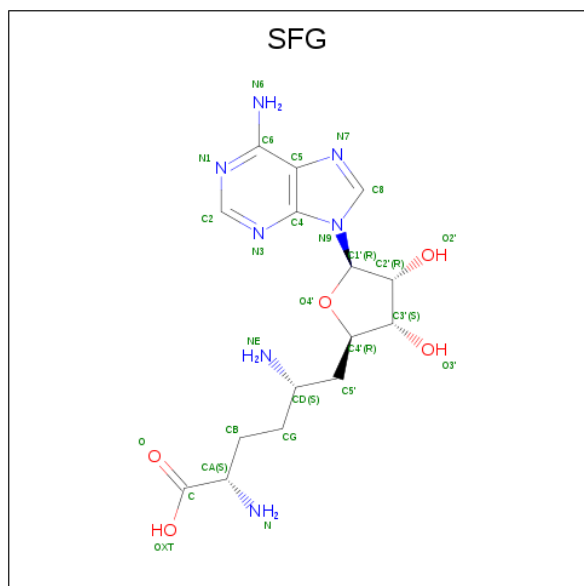
There are 4 unique types of molecules in this entry. The entry contains 11580 atoms, of which 0 are hydrogens and 0 are deuteriums.

In the tables below, the ZeroOcc column contains the number of atoms modelled with zero occupancy, the AltConf column contains the number of residues with at least one atom in alternate conformation and the Trace column contains the number of residues modelled with at most 2 atoms.

- Molecule 1 is a protein called HISTONE-ARGININE METHYLTRANSFERASE CARM1.

Mol	Chain	Residues	Atoms					ZeroOcc	AltConf	Trace
			Total	C	N	O	S			
1	A	344	Total 2752	C 1776	N 455	O 507	S 14	0	0	1
1	B	344	Total 2752	C 1776	N 455	O 507	S 14	0	0	1
1	C	344	Total 2752	C 1776	N 455	O 507	S 14	0	0	1
1	D	344	Total 2752	C 1776	N 455	O 507	S 14	0	0	1

- Molecule 2 is SINEFUNGIN (three-letter code: SFG) (formula: C<sub>15</sub>H<sub>23</sub>N<sub>7</sub>O<sub>5</sub>).



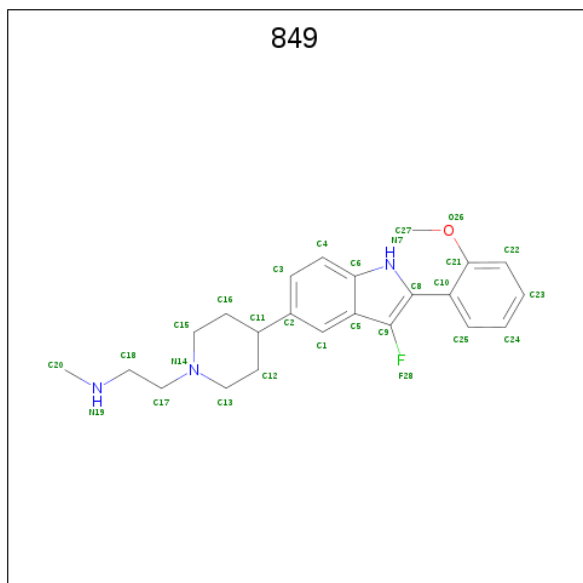
Mol	Chain	Residues	Atoms				ZeroOcc	AltConf
			Total	C	N	O		
2	A	1	Total 27	C 15	N 7	O 5	0	0
2	B	1	Total 27	C 15	N 7	O 5	0	0

*Continued on next page...*

Continued from previous page...

Mol	Chain	Residues	Atoms				ZeroOcc	AltConf
2	C	1	Total	C	N	O	0	0
			27	15	7	5		
2	D	1	Total	C	N	O	0	0
			27	15	7	5		

- Molecule 3 is 2-{4-[3-FLUORO-2-(2-METHOXYPHENYL)-1H-INDOL-5-YL] PIPERIDIN-1-YL}-N-METHYLETHANAMINE (three-letter code: 849) (formula: C<sub>23</sub>H<sub>28</sub>FN<sub>3</sub>O).



Mol	Chain	Residues	Atoms					ZeroOcc	AltConf
3	A	1	Total	C	F	N	O	0	0
			28	23	1	3	1		
3	B	1	Total	C	F	N	O	0	0
			28	23	1	3	1		
3	C	1	Total	C	F	N	O	0	0
			28	23	1	3	1		
3	D	1	Total	C	F	N	O	0	0
			28	23	1	3	1		

- Molecule 4 is water.

Mol	Chain	Residues	Atoms		ZeroOcc	AltConf
4	A	104	Total	O	0	0
			104	104		
4	B	70	Total	O	0	0
			70	70		
4	C	83	Total	O	0	0
			83	83		

Continued on next page...

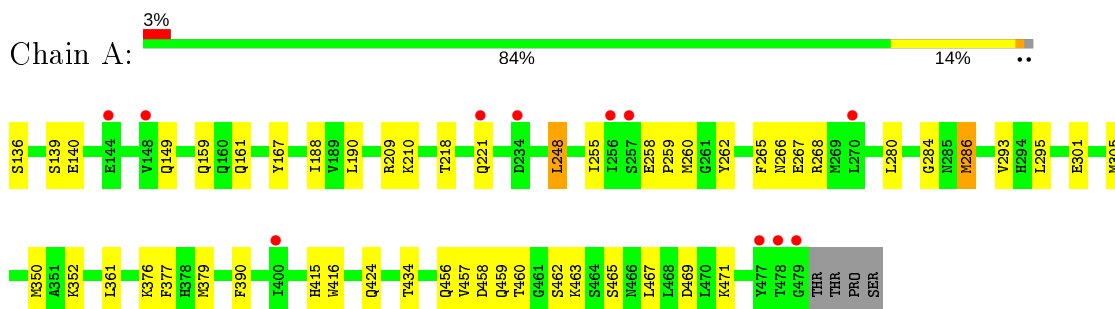
*Continued from previous page...*

<b>Mol</b>	<b>Chain</b>	<b>Residues</b>	<b>Atoms</b>		<b>ZeroOcc</b>	<b>AltConf</b>
4	D	95	Total	O	0	0
			95	95		

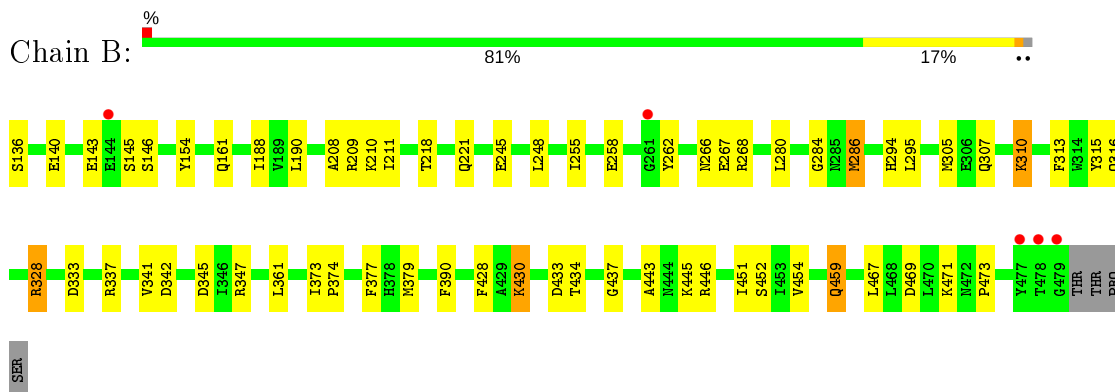
### 3 Residue-property plots [i](#)

These plots are drawn for all protein, RNA and DNA chains in the entry. The first graphic for a chain summarises the proportions of the various outlier classes displayed in the second graphic. The second graphic shows the sequence view annotated by issues in geometry and electron density. Residues are color-coded according to the number of geometric quality criteria for which they contain at least one outlier: green = 0, yellow = 1, orange = 2 and red = 3 or more. A red dot above a residue indicates a poor fit to the electron density ( $RSRZ > 2$ ). Stretches of 2 or more consecutive residues without any outlier are shown as a green connector. Residues present in the sample, but not in the model, are shown in grey.

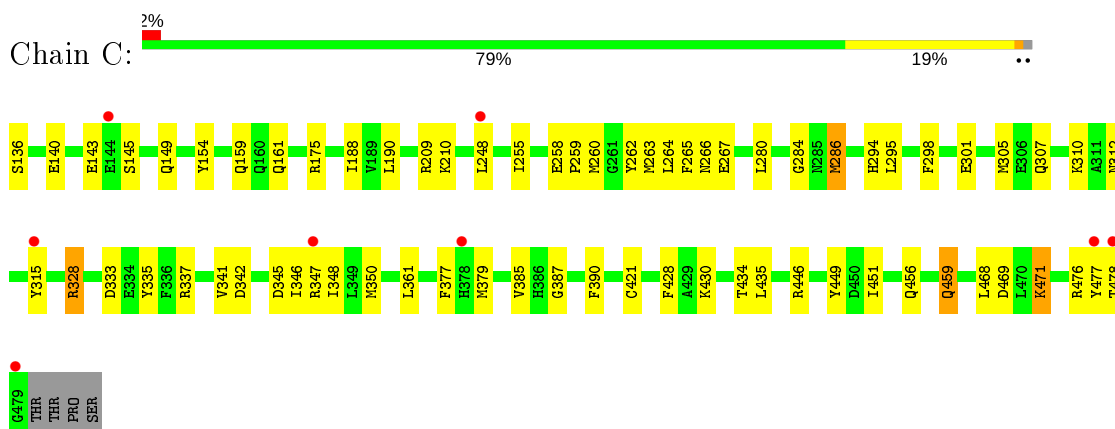
- Molecule 1: HISTONE-ARGININE METHYLTRANSFERASE CARM1




- Molecule 1: HISTONE-ARGININE METHYLTRANSFERASE CARM1

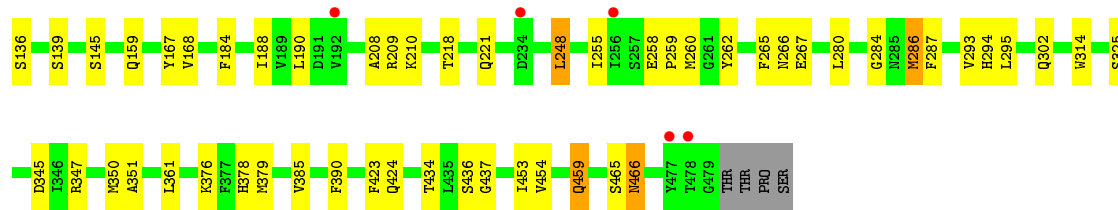


- Molecule 1: HISTONE-ARGININE METHYLTRANSFERASE CARM1



- Molecule 1: HISTONE-ARGININE METHYLTRANSFERASE CARM1

Chain D:  %



## 4 Data and refinement statistics

Property	Value	Source
Space group	P 21 21 2	Depositor
Cell constants a, b, c, $\alpha$ , $\beta$ , $\gamma$	74.90Å 98.47Å 207.18Å 90.00° 90.00° 90.00°	Depositor
Resolution (Å)	29.88 – 2.10 29.88 – 2.10	Depositor EDS
% Data completeness (in resolution range)	85.2 (29.88-2.10) 85.4 (29.88-2.10)	Depositor EDS
$R_{merge}$	0.08	Depositor
$R_{sym}$	(Not available)	Depositor
$\langle I/\sigma(I) \rangle$ <sup>1</sup>	1.60 (at 2.10Å)	Xtrriage
Refinement program	CNS NULL	Depositor
R, $R_{free}$	0.205 , 0.244 0.198 , 0.193	Depositor DCC
$R_{free}$ test set	3832 reflections (4.98%)	wwPDB-VP
Wilson B-factor (Å <sup>2</sup> )	32.3	Xtrriage
Anisotropy	0.474	Xtrriage
Bulk solvent $k_{sol}$ (e/Å <sup>3</sup> ), $B_{sol}$ (Å <sup>2</sup> )	0.34 , 43.2	EDS
L-test for twinning <sup>2</sup>	$\langle  L  \rangle = 0.49$ , $\langle L^2 \rangle = 0.32$	Xtrriage
Estimated twinning fraction	No twinning to report.	Xtrriage
$F_o, F_c$ correlation	0.95	EDS
Total number of atoms	11580	wwPDB-VP
Average B, all atoms (Å <sup>2</sup> )	36.0	wwPDB-VP

Xtrriage's analysis on translational NCS is as follows: *The analyses of the Patterson function reveals a significant off-origin peak that is 53.58 % of the origin peak, indicating pseudo-translational symmetry. The chance of finding a peak of this or larger height randomly in a structure without pseudo-translational symmetry is equal to 4.1314e-05. The detected translational NCS is most likely also responsible for the elevated intensity ratio.*

<sup>1</sup>Intensities estimated from amplitudes.

<sup>2</sup>Theoretical values of  $\langle |L| \rangle$ ,  $\langle L^2 \rangle$  for acentric reflections are 0.5, 0.333 respectively for untwinned datasets, and 0.375, 0.2 for perfectly twinned datasets.



## 5 Model quality [i](#)

### 5.1 Standard geometry [i](#)

Bond lengths and bond angles in the following residue types are not validated in this section: SFG, 849

The Z score for a bond length (or angle) is the number of standard deviations the observed value is removed from the expected value. A bond length (or angle) with  $|Z| > 5$  is considered an outlier worth inspection. RMSZ is the root-mean-square of all Z scores of the bond lengths (or angles).

Mol	Chain	Bond lengths		Bond angles	
		RMSZ	# Z  >5	RMSZ	# Z  >5
1	A	0.55	0/2822	0.62	0/3825
1	B	0.54	0/2822	0.60	0/3825
1	C	0.55	0/2822	0.60	0/3825
1	D	0.57	0/2822	0.60	0/3825
All	All	0.55	0/11288	0.61	0/15300

There are no bond length outliers.

There are no bond angle outliers.

There are no chirality outliers.

There are no planarity outliers.

### 5.2 Too-close contacts [i](#)

In the following table, the Non-H and H(model) columns list the number of non-hydrogen atoms and hydrogen atoms in the chain respectively. The H(added) column lists the number of hydrogen atoms added and optimized by MolProbity. The Clashes column lists the number of clashes within the asymmetric unit, whereas Symm-Clashes lists symmetry related clashes.

Mol	Chain	Non-H	H(model)	H(added)	Clashes	Symm-Clashes
1	A	2752	0	2699	45	0
1	B	2752	0	2699	54	0
1	C	2752	0	2699	54	0
1	D	2752	0	2699	41	0
2	A	27	0	22	2	0
2	B	27	0	22	1	0
2	C	27	0	22	1	0
2	D	27	0	22	2	0
3	A	28	0	28	7	0

*Continued on next page...*

*Continued from previous page...*

Mol	Chain	Non-H	H(model)	H(added)	Clashes	Symm-Clashes
3	B	28	0	28	4	0
3	C	28	0	28	5	0
3	D	28	0	28	5	0
4	A	104	0	0	5	0
4	B	70	0	0	1	0
4	C	83	0	0	3	0
4	D	95	0	0	4	0
All	All	11580	0	10996	194	0

The all-atom clashscore is defined as the number of clashes found per 1000 atoms (including hydrogen atoms). The all-atom clashscore for this structure is 9.

All (194) close contacts within the same asymmetric unit are listed below, sorted by their clash magnitude.

Atom-1	Atom-2	Interatomic distance (Å)	Clash overlap (Å)
1:A:460:THR:HG23	1:A:462:SER:H	1.28	0.97
1:A:434:THR:H	1:A:459:GLN:HE22	1.11	0.96
1:D:459:GLN:H	1:D:459:GLN:NE2	1.74	0.84
1:A:457:VAL:HB	1:A:460:THR:HG22	1.60	0.82
1:B:307:GLN:HE22	1:B:310:LYS:NZ	1.77	0.82
1:C:459:GLN:NE2	1:C:459:GLN:H	1.79	0.80
1:C:459:GLN:HE21	1:C:459:GLN:H	1.30	0.78
1:A:434:THR:H	1:A:459:GLN:NE2	1.81	0.77
1:B:328:ARG:HH22	1:C:328:ARG:NH2	1.83	0.76
1:B:333:ASP:O	1:B:337:ARG:HG3	1.86	0.74
1:D:459:GLN:H	1:D:459:GLN:HE21	1.36	0.72
1:D:255:ILE:HB	1:D:286:MET:HE2	1.73	0.70
1:A:352:LYS:HE3	4:A:2056:HOH:O	1.93	0.69
1:A:457:VAL:HB	1:A:460:THR:CG2	2.23	0.69
1:B:280:LEU:HD11	1:B:284:GLY:HA3	1.75	0.68
1:D:255:ILE:HB	1:D:286:MET:CE	2.24	0.66
1:B:295:LEU:HG	1:B:390:PHE:CE2	2.31	0.66
1:A:286:MET:HG3	1:A:361:LEU:HD23	1.77	0.66
1:B:307:GLN:HE22	1:B:310:LYS:HZ1	1.44	0.65
1:A:136:SER:N	1:A:139:SER:HG	1.93	0.65
1:B:255:ILE:HB	1:B:286:MET:CE	2.27	0.65
1:C:280:LEU:HD11	1:C:284:GLY:HA3	1.79	0.65
1:B:345:ASP:OD2	1:B:347:ARG:HD3	1.98	0.64
1:C:255:ILE:HB	1:C:286:MET:CE	2.29	0.63
1:C:295:LEU:HG	1:C:390:PHE:CE2	2.33	0.63
1:D:280:LEU:HD11	1:D:284:GLY:HA3	1.80	0.63

*Continued on next page...*

*Continued from previous page...*

Atom-1	Atom-2	Interatomic distance (Å)	Clash overlap (Å)
1:D:286:MET:HG3	1:D:361:LEU:HD23	1.81	0.62
1:B:469:ASP:OD1	1:B:471:LYS:HE2	1.98	0.62
1:B:313:PHE:O	1:B:316:GLN:HG2	2.00	0.62
1:C:307:GLN:NE2	1:C:307:GLN:HA	2.15	0.62
1:D:459:GLN:NE2	1:D:459:GLN:N	2.47	0.62
2:C:1001:SFG:NE	3:C:1005:849:N19	2.47	0.62
1:A:457:VAL:CB	1:A:460:THR:HG22	2.29	0.61
1:B:451:ILE:O	1:B:467:LEU:HA	2.00	0.61
1:C:255:ILE:HB	1:C:286:MET:HE2	1.83	0.61
1:A:280:LEU:HD11	1:A:284:GLY:HA3	1.81	0.61
1:D:424:GLN:HB3	4:D:2088:HOH:O	2.00	0.61
1:C:188:ILE:HD11	1:C:209:ARG:NH2	2.15	0.60
1:D:255:ILE:HD12	1:D:286:MET:CE	2.32	0.59
1:A:262:TYR:CE2	3:A:1005:849:H3	2.36	0.59
1:D:255:ILE:HD12	1:D:286:MET:HE3	1.84	0.59
1:C:333:ASP:O	1:C:337:ARG:HG3	2.02	0.59
1:C:342:ASP:OD2	1:C:476:ARG:HD3	2.03	0.58
1:A:255:ILE:HD12	1:A:286:MET:CE	2.32	0.58
2:D:1001:SFG:NE	3:D:1005:849:N19	2.50	0.58
1:C:307:GLN:HE22	1:C:310:LYS:NZ	2.02	0.58
1:D:423:PHE:HA	1:D:466:ASN:OD1	2.03	0.58
1:D:345:ASP:OD1	1:D:347:ARG:HB2	2.04	0.58
1:A:188:ILE:HD11	1:A:209:ARG:NH2	2.18	0.58
1:B:188:ILE:HD11	1:B:209:ARG:NH2	2.19	0.58
1:A:268:ARG:HA	4:A:2092:HOH:O	2.03	0.57
1:D:466:ASN:ND2	1:D:466:ASN:N	2.51	0.57
1:A:255:ILE:HB	1:A:286:MET:CE	2.34	0.57
1:A:301:GLU:O	1:A:305:MET:HG3	2.05	0.57
1:A:460:THR:HG21	4:A:2089:HOH:O	2.05	0.57
1:D:188:ILE:HD11	1:D:209:ARG:NH2	2.19	0.57
1:B:428:PHE:CE2	1:B:430:LYS:HD3	2.39	0.57
1:C:459:GLN:NE2	1:C:459:GLN:N	2.50	0.56
1:C:136:SER:O	1:C:140:GLU:HG2	2.05	0.56
1:A:471:LYS:HG2	4:A:2095:HOH:O	2.05	0.56
1:B:377:PHE:O	1:B:434:THR:HA	2.06	0.56
1:B:255:ILE:HB	1:B:286:MET:HE2	1.88	0.55
1:C:451:ILE:HB	1:C:468:LEU:HB2	1.89	0.55
1:B:143:GLU:HB2	1:B:446:ARG:HH11	1.71	0.55
1:C:345:ASP:OD1	1:C:347:ARG:HG3	2.07	0.55
1:D:266:ASN:O	1:D:267:GLU:HB2	2.07	0.55
1:A:255:ILE:HB	1:A:286:MET:HE2	1.89	0.55

*Continued on next page...*

*Continued from previous page...*

Atom-1	Atom-2	Interatomic distance (Å)	Clash overlap (Å)
1:C:262:TYR:CE2	3:C:1005:849:H3	2.41	0.55
1:C:255:ILE:HD12	1:C:286:MET:CE	2.36	0.54
1:B:266:ASN:O	1:B:267:GLU:HB2	2.08	0.54
1:A:255:ILE:HD12	1:A:286:MET:HE3	1.90	0.54
1:D:262:TYR:CE2	3:D:1005:849:H3	2.43	0.54
1:A:424:GLN:HG3	1:A:465:SER:O	2.07	0.54
1:A:159:GLN:NE2	4:A:2005:HOH:O	2.40	0.53
1:B:262:TYR:CE2	3:B:1005:849:H3	2.44	0.53
1:B:305:MET:HE1	1:C:305:MET:HE1	1.90	0.53
1:C:377:PHE:O	1:C:434:THR:HA	2.09	0.53
1:C:421:CYS:SG	1:C:468:LEU:HD22	2.48	0.53
1:C:161:GLN:NE2	4:C:2005:HOH:O	2.41	0.52
1:A:136:SER:N	1:A:139:SER:OG	2.43	0.52
2:B:1001:SFG:NE	3:B:1005:849:N19	2.58	0.52
1:D:351:ALA:HB2	1:D:379:MET:HE1	1.91	0.52
1:A:377:PHE:HB2	1:A:379:MET:CE	2.40	0.51
1:A:456:GLN:HB3	1:A:463:LYS:HG2	1.91	0.51
1:D:159:GLN:NE2	4:D:2006:HOH:O	2.37	0.51
1:C:266:ASN:O	1:C:267:GLU:HB2	2.11	0.51
1:B:286:MET:HG3	1:B:361:LEU:HD23	1.92	0.51
1:A:265:PHE:CE2	1:A:293:VAL:HG21	2.46	0.51
1:B:307:GLN:HA	1:B:307:GLN:NE2	2.26	0.51
1:C:255:ILE:HD12	1:C:286:MET:HE3	1.93	0.50
1:B:145:SER:HB3	1:D:145:SER:HA	1.92	0.50
1:D:424:GLN:N	4:D:2088:HOH:O	2.42	0.50
1:B:452:SER:HA	1:B:467:LEU:HD23	1.93	0.50
1:D:295:LEU:HG	1:D:390:PHE:CE2	2.47	0.50
1:A:262:TYR:CZ	3:A:1005:849:H3	2.47	0.50
1:C:428:PHE:HZ	1:C:430:LYS:HE2	1.76	0.50
1:A:457:VAL:CG1	1:A:460:THR:HG22	2.43	0.49
1:C:469:ASP:OD1	1:C:471:LYS:HG2	2.11	0.49
1:A:259:PRO:HD2	1:A:260:MET:SD	2.53	0.49
1:D:190:LEU:HD13	1:D:248:LEU:HD11	1.94	0.49
1:B:268:ARG:CZ	1:B:443:ALA:HB1	2.42	0.49
1:C:286:MET:HG3	1:C:361:LEU:HD23	1.95	0.49
1:A:434:THR:OG1	1:A:458:ASP:HB2	2.13	0.49
1:B:315:TYR:HB2	1:B:328:ARG:HG3	1.95	0.48
1:C:259:PRO:HA	3:C:1005:849:H201	1.94	0.48
1:C:341:VAL:O	1:C:342:ASP:HB3	2.12	0.48
1:C:428:PHE:CZ	1:C:430:LYS:HE2	2.49	0.48
1:A:416:TRP:NE1	3:A:1005:849:H151	2.28	0.48

*Continued on next page...*

*Continued from previous page...*

Atom-1	Atom-2	Interatomic distance (Å)	Clash overlap (Å)
1:B:345:ASP:CG	1:B:347:ARG:HD3	2.33	0.48
1:C:477:TYR:O	1:C:478:THR:HG23	2.14	0.48
1:C:307:GLN:HE22	1:C:310:LYS:CE	2.27	0.48
1:D:280:LEU:CD1	1:D:284:GLY:HA3	2.44	0.47
1:B:154:TYR:OH	3:B:1005:849:H181	2.15	0.47
1:C:430:LYS:HE3	1:D:167:TYR:CD2	2.50	0.47
1:B:143:GLU:HB2	1:B:446:ARG:NH1	2.30	0.47
1:B:146:SER:HB2	1:B:446:ARG:CZ	2.45	0.47
1:D:376:LYS:HG3	1:D:436:SER:HB3	1.96	0.47
1:B:255:ILE:HD12	1:B:286:MET:CE	2.45	0.47
1:B:143:GLU:CB	1:B:446:ARG:HH11	2.28	0.46
1:B:161:GLN:NE2	4:B:2007:HOH:O	2.48	0.46
1:C:435:LEU:HD12	1:C:456:GLN:O	2.16	0.46
1:A:469:ASP:OD1	1:A:471:LYS:HG2	2.16	0.46
2:A:1001:SFG:NE	3:A:1005:849:N19	2.64	0.46
1:B:307:GLN:HE22	1:B:310:LYS:CE	2.28	0.45
1:B:315:TYR:CA	1:B:328:ARG:HG3	2.47	0.45
1:C:159:GLN:NE2	4:C:2004:HOH:O	2.37	0.45
1:C:468:LEU:HD12	1:C:468:LEU:N	2.31	0.45
1:B:190:LEU:HD13	1:B:248:LEU:HD11	1.98	0.45
1:D:314:TRP:O	1:D:325:SER:HA	2.16	0.45
1:B:471:LYS:C	1:B:473:PRO:HD3	2.37	0.45
1:C:312:ASN:O	1:C:315:TYR:HB3	2.17	0.44
1:D:350:MET:SD	1:D:385:VAL:HG22	2.57	0.44
1:B:377:PHE:HB2	1:B:379:MET:CE	2.47	0.44
1:B:315:TYR:HA	1:B:328:ARG:HG3	1.99	0.44
1:B:373:ILE:HA	1:B:374:PRO:HD3	1.84	0.44
1:C:262:TYR:CZ	3:C:1005:849:H3	2.53	0.44
1:B:218:THR:O	1:B:221:GLN:HG2	2.18	0.44
1:A:259:PRO:HA	3:A:1005:849:H201	2.00	0.43
1:B:459:GLN:H	1:B:459:GLN:NE2	2.15	0.43
1:A:266:ASN:O	1:A:267:GLU:HB2	2.18	0.43
1:D:168:VAL:HG11	4:D:2079:HOH:O	2.17	0.43
1:D:259:PRO:HD2	1:D:260:MET:SD	2.58	0.43
1:C:387:GLY:HA3	1:C:421:CYS:O	2.19	0.43
1:B:262:TYR:CZ	3:B:1005:849:H3	2.53	0.43
1:A:255:ILE:HD12	1:A:286:MET:HE1	1.98	0.43
1:B:294:HIS:O	1:B:390:PHE:HA	2.19	0.43
1:A:159:GLN:NE2	1:A:159:GLN:HA	2.34	0.43
1:A:190:LEU:HD13	1:A:248:LEU:HD11	2.01	0.43
1:B:341:VAL:O	1:B:342:ASP:HB3	2.19	0.43

*Continued on next page...*

*Continued from previous page...*

Atom-1	Atom-2	Interatomic distance (Å)	Clash overlap (Å)
1:B:377:PHE:HB2	1:B:379:MET:HE1	2.01	0.42
1:D:184:PHE:O	1:D:208:ALA:HA	2.19	0.42
1:C:263:MET:O	1:C:264:LEU:HB3	2.19	0.42
1:A:459:GLN:NE2	1:A:459:GLN:H	2.16	0.42
1:B:315:TYR:HB2	1:B:328:ARG:HE	1.83	0.42
1:B:437:GLY:HA3	1:B:454:VAL:O	2.20	0.42
1:B:471:LYS:O	1:B:473:PRO:HD3	2.19	0.42
1:C:280:LEU:CD1	1:C:284:GLY:HA3	2.48	0.42
1:D:262:TYR:CZ	3:D:1005:849:H3	2.54	0.42
1:B:433:ASP:HB3	1:B:459:GLN:NE2	2.35	0.42
1:C:259:PRO:HD2	1:C:260:MET:SD	2.60	0.42
1:C:265:PHE:HB3	1:C:449:TYR:CE1	2.54	0.42
1:D:294:HIS:O	1:D:390:PHE:HA	2.20	0.42
1:D:423:PHE:HE1	1:D:453:ILE:HG21	1.85	0.42
1:D:466:ASN:HD22	1:D:466:ASN:N	2.18	0.42
1:D:378:HIS:ND1	1:D:434:THR:HG22	2.34	0.42
1:A:415:HIS:NE2	3:A:1005:849:N14	2.68	0.41
1:A:167:TYR:CD2	1:B:430:LYS:HE3	2.55	0.41
1:B:208:ALA:HB3	1:B:211:ILE:HD11	2.02	0.41
1:D:453:ILE:O	1:D:465:SER:HA	2.20	0.41
1:D:437:GLY:HA3	1:D:454:VAL:O	2.19	0.41
1:C:294:HIS:O	1:C:390:PHE:HA	2.19	0.41
1:C:446:ARG:HG3	1:C:471:LYS:NZ	2.34	0.41
1:B:255:ILE:HD12	1:B:286:MET:HE1	2.01	0.41
1:C:154:TYR:OH	3:C:1005:849:H181	2.21	0.41
1:A:295:LEU:HG	1:A:390:PHE:CE2	2.56	0.41
1:B:136:SER:HB3	1:B:245:GLU:HG2	2.02	0.41
1:C:175:ARG:HG3	4:C:2008:HOH:O	2.21	0.41
1:D:259:PRO:HA	3:D:1005:849:H201	2.03	0.41
1:D:265:PHE:CE2	1:D:293:VAL:HG21	2.56	0.41
2:A:1001:SFG:HB1	2:A:1001:SFG:H4'	2.02	0.41
1:C:190:LEU:HD13	1:C:248:LEU:HD11	2.03	0.41
1:A:149:GLN:HG2	3:A:1005:849:H24	2.03	0.41
1:D:136:SER:N	1:D:139:SER:HG	2.18	0.41
1:A:218:THR:O	1:A:221:GLN:HG2	2.20	0.41
1:A:161:GLN:NE2	1:C:335:TYR:OH	2.54	0.41
1:C:377:PHE:HB2	1:C:379:MET:CE	2.51	0.41
1:C:350:MET:SD	1:C:385:VAL:HG22	2.61	0.41
1:D:218:THR:O	1:D:221:GLN:HG2	2.21	0.40
1:B:140:GLU:O	1:B:445:LYS:HE3	2.21	0.40
2:D:1001:SFG:HNE2	3:D:1005:849:C18	2.33	0.40

*Continued on next page...*

Continued from previous page...

Atom-1	Atom-2	Interatomic distance (Å)	Clash overlap (Å)
1:A:460:THR:HG23	1:A:462:SER:N	2.13	0.40
1:C:255:ILE:HD12	1:C:286:MET:HE1	2.02	0.40
1:C:145:SER:O	1:C:149:GLN:OE1	2.39	0.40
1:C:298:PHE:HB2	1:C:348:ILE:HD12	2.03	0.40

There are no symmetry-related clashes.

## 5.3 Torsion angles [i](#)

### 5.3.1 Protein backbone [i](#)

In the following table, the Percentiles column shows the percent Ramachandran outliers of the chain as a percentile score with respect to all X-ray entries followed by that with respect to entries of similar resolution.

The Analysed column shows the number of residues for which the backbone conformation was analysed, and the total number of residues.

Mol	Chain	Analysed	Favoured	Allowed	Outliers	Percentiles	
1	A	342/348 (98%)	329 (96%)	13 (4%)	0	100	100
1	B	342/348 (98%)	328 (96%)	14 (4%)	0	100	100
1	C	342/348 (98%)	327 (96%)	15 (4%)	0	100	100
1	D	342/348 (98%)	326 (95%)	16 (5%)	0	100	100
All	All	1368/1392 (98%)	1310 (96%)	58 (4%)	0	100	100

There are no Ramachandran outliers to report.

### 5.3.2 Protein sidechains [i](#)

In the following table, the Percentiles column shows the percent sidechain outliers of the chain as a percentile score with respect to all X-ray entries followed by that with respect to entries of similar resolution.

The Analysed column shows the number of residues for which the sidechain conformation was analysed, and the total number of residues.

Mol	Chain	Analysed	Rotameric	Outliers	Percentiles	
1	A	299/303 (99%)	291 (97%)	8 (3%)	44	48
1	B	299/303 (99%)	292 (98%)	7 (2%)	50	55

Continued on next page...

*Continued from previous page...*

Mol	Chain	Analysed	Rotameric	Outliers	Percentiles	
1	C	299/303 (99%)	290 (97%)	9 (3%)	41	44
1	D	299/303 (99%)	291 (97%)	8 (3%)	44	48
All	All	1196/1212 (99%)	1164 (97%)	32 (3%)	44	48

All (32) residues with a non-rotameric sidechain are listed below:

Mol	Chain	Res	Type
1	A	140	GLU
1	A	210	LYS
1	A	248	LEU
1	A	258	GLU
1	A	286	MET
1	A	350	MET
1	A	376	LYS
1	A	467	LEU
1	B	210	LYS
1	B	258	GLU
1	B	286	MET
1	B	310	LYS
1	B	328	ARG
1	B	430	LYS
1	B	459	GLN
1	C	143	GLU
1	C	210	LYS
1	C	258	GLU
1	C	286	MET
1	C	301	GLU
1	C	328	ARG
1	C	346	ILE
1	C	459	GLN
1	C	471	LYS
1	D	210	LYS
1	D	248	LEU
1	D	258	GLU
1	D	286	MET
1	D	287	PHE
1	D	302	GLN
1	D	459	GLN
1	D	466	ASN

Some sidechains can be flipped to improve hydrogen bonding and reduce clashes. All (27) such sidechains are listed below:



Mol	Chain	Res	Type
1	A	159	GLN
1	A	161	GLN
1	A	174	GLN
1	A	221	GLN
1	A	456	GLN
1	A	459	GLN
1	B	159	GLN
1	B	161	GLN
1	B	174	GLN
1	B	221	GLN
1	B	307	GLN
1	B	456	GLN
1	B	459	GLN
1	C	159	GLN
1	C	161	GLN
1	C	174	GLN
1	C	221	GLN
1	C	307	GLN
1	C	316	GLN
1	C	459	GLN
1	D	159	GLN
1	D	161	GLN
1	D	174	GLN
1	D	221	GLN
1	D	316	GLN
1	D	456	GLN
1	D	459	GLN

### 5.3.3 RNA [i](#)

There are no RNA molecules in this entry.

### 5.4 Non-standard residues in protein, DNA, RNA chains [i](#)

There are no non-standard protein/DNA/RNA residues in this entry.

### 5.5 Carbohydrates [i](#)

There are no carbohydrates in this entry.

## 5.6 Ligand geometry i

8 ligands are modelled in this entry.

In the following table, the Counts columns list the number of bonds (or angles) for which Mogul statistics could be retrieved, the number of bonds (or angles) that are observed in the model and the number of bonds (or angles) that are defined in the Chemical Component Dictionary. The Link column lists molecule types, if any, to which the group is linked. The Z score for a bond length (or angle) is the number of standard deviations the observed value is removed from the expected value. A bond length (or angle) with  $|Z| > 2$  is considered an outlier worth inspection. RMSZ is the root-mean-square of all Z scores of the bond lengths (or angles).

Mol	Type	Chain	Res	Link	Bond lengths			Bond angles		
					Counts	RMSZ	# Z  > 2	Counts	RMSZ	# Z  > 2
2	SFG	D	1001	-	22,29,29	1.65	4 (18%)	18,42,42	1.65	5 (27%)
2	SFG	A	1001	-	22,29,29	1.56	2 (9%)	18,42,42	1.61	4 (22%)
2	SFG	C	1001	-	22,29,29	1.65	3 (13%)	18,42,42	1.62	5 (27%)
3	849	C	1005	-	31,31,31	2.36	13 (41%)	37,43,43	1.99	6 (16%)
3	849	A	1005	-	31,31,31	2.26	13 (41%)	37,43,43	1.94	4 (10%)
3	849	D	1005	-	31,31,31	2.21	13 (41%)	37,43,43	1.97	6 (16%)
2	SFG	B	1001	-	22,29,29	1.56	5 (22%)	18,42,42	1.72	4 (22%)
3	849	B	1005	-	31,31,31	2.31	14 (45%)	37,43,43	1.95	7 (18%)

In the following table, the Chirals column lists the number of chiral outliers, the number of chiral centers analysed, the number of these observed in the model and the number defined in the Chemical Component Dictionary. Similar counts are reported in the Torsion and Rings columns. '2' means no outliers of that kind were identified.

Mol	Type	Chain	Res	Link	Chirals	Torsions	Rings
2	SFG	D	1001	-	-	3/9/33/33	0/3/3/3
2	SFG	A	1001	-	-	4/9/33/33	0/3/3/3
2	SFG	C	1001	-	-	2/9/33/33	0/3/3/3
3	849	C	1005	-	-	3/12/24/24	0/4/4/4
3	849	A	1005	-	-	3/12/24/24	0/4/4/4
3	849	D	1005	-	-	4/12/24/24	0/4/4/4
2	SFG	B	1001	-	-	3/9/33/33	0/3/3/3
3	849	B	1005	-	-	3/12/24/24	0/4/4/4

All (67) bond length outliers are listed below:

Mol	Chain	Res	Type	Atoms	Z	Observed(Å)	Ideal(Å)
3	C	1005	849	C10-C8	-5.71	1.43	1.49

*Continued on next page...*

*Continued from previous page...*

Mol	Chain	Res	Type	Atoms	Z	Observed(Å)	Ideal(Å)
3	D	1005	849	C10-C8	-5.55	1.43	1.49
2	C	1001	SFG	C2-N3	5.34	1.40	1.32
3	B	1005	849	C10-C8	-5.01	1.44	1.49
2	D	1001	SFG	C2-N3	4.69	1.39	1.32
2	A	1001	SFG	C2-N3	4.58	1.39	1.32
3	C	1005	849	O26-C21	4.28	1.44	1.37
3	A	1005	849	C1-C2	4.14	1.45	1.37
3	A	1005	849	C10-C8	-4.10	1.45	1.49
3	B	1005	849	C1-C2	3.95	1.45	1.37
3	B	1005	849	C9-C5	-3.71	1.37	1.42
3	D	1005	849	O26-C21	3.65	1.43	1.37
3	A	1005	849	O26-C21	3.64	1.43	1.37
3	A	1005	849	C8-N7	3.57	1.44	1.37
3	D	1005	849	C1-C2	3.57	1.44	1.37
3	C	1005	849	C1-C2	3.56	1.44	1.37
3	A	1005	849	C25-C10	3.53	1.45	1.40
3	C	1005	849	C10-C21	3.48	1.47	1.40
3	B	1005	849	O26-C21	3.45	1.42	1.37
3	B	1005	849	C2-C11	3.44	1.59	1.52
3	D	1005	849	C8-N7	3.33	1.44	1.37
2	B	1001	SFG	C2-N3	3.32	1.37	1.32
3	B	1005	849	C25-C10	3.19	1.45	1.40
3	A	1005	849	C17-N14	3.19	1.54	1.47
2	A	1001	SFG	CA-N	3.14	1.54	1.47
3	C	1005	849	C2-C11	3.04	1.58	1.52
2	C	1001	SFG	CA-N	3.01	1.53	1.47
3	D	1005	849	C17-N14	2.97	1.54	1.47
3	C	1005	849	C25-C10	2.97	1.44	1.40
2	D	1001	SFG	CA-N	2.95	1.53	1.47
3	A	1005	849	C3-C2	2.95	1.43	1.39
3	B	1005	849	C8-N7	2.94	1.43	1.37
2	B	1001	SFG	C5'-C4'	2.92	1.57	1.52
3	D	1005	849	C10-C21	2.91	1.46	1.40
3	B	1005	849	C10-C21	2.89	1.46	1.40
3	D	1005	849	C25-C10	2.89	1.44	1.40
3	C	1005	849	C8-N7	2.88	1.43	1.37
3	C	1005	849	C9-C5	-2.85	1.38	1.42
3	B	1005	849	C3-C2	2.75	1.43	1.39
3	D	1005	849	C13-N14	2.72	1.54	1.46
3	C	1005	849	C17-N14	2.71	1.53	1.47
3	A	1005	849	C2-C11	2.68	1.57	1.52
3	B	1005	849	C22-C21	2.68	1.45	1.39

*Continued on next page...*

*Continued from previous page...*

Mol	Chain	Res	Type	Atoms	Z	Observed(Å)	Ideal(Å)
3	D	1005	849	C3-C2	2.67	1.43	1.39
3	A	1005	849	C22-C21	2.66	1.45	1.39
3	C	1005	849	C22-C21	2.65	1.45	1.39
2	D	1001	SFG	CD-NE	2.63	1.55	1.46
3	A	1005	849	C10-C21	2.58	1.45	1.40
3	A	1005	849	C13-N14	2.48	1.53	1.46
3	B	1005	849	C17-N14	2.37	1.52	1.47
3	C	1005	849	C4-C3	2.35	1.41	1.36
3	B	1005	849	C13-N14	2.34	1.53	1.46
3	B	1005	849	C12-C11	2.32	1.59	1.53
3	D	1005	849	C12-C11	2.30	1.59	1.53
3	A	1005	849	C4-C3	2.30	1.41	1.36
2	B	1001	SFG	C3'-C4'	2.26	1.58	1.53
3	D	1005	849	C22-C21	2.20	1.44	1.39
3	C	1005	849	C13-N14	2.20	1.53	1.46
3	D	1005	849	C15-N14	2.18	1.52	1.46
2	D	1001	SFG	C3'-C4'	2.18	1.58	1.53
3	D	1005	849	C16-C11	2.16	1.59	1.53
3	B	1005	849	C16-C11	2.14	1.58	1.53
2	C	1001	SFG	C4-N3	-2.09	1.32	1.35
2	B	1001	SFG	C4-N3	-2.09	1.32	1.35
3	C	1005	849	C16-C11	2.06	1.58	1.53
3	A	1005	849	C12-C11	2.05	1.58	1.53
2	B	1001	SFG	CA-N	2.01	1.51	1.47

All (41) bond angle outliers are listed below:

Mol	Chain	Res	Type	Atoms	Z	Observed(°)	Ideal(°)
3	A	1005	849	C27-O26-C21	7.03	128.13	117.53
3	C	1005	849	C27-O26-C21	6.77	127.74	117.53
3	D	1005	849	C27-O26-C21	6.40	127.19	117.53
3	B	1005	849	C27-O26-C21	6.13	126.78	117.53
3	B	1005	849	C2-C1-C5	-5.65	118.23	122.00
3	D	1005	849	C2-C1-C5	-5.51	118.33	122.00
3	C	1005	849	C2-C1-C5	-5.45	118.36	122.00
3	B	1005	849	C13-C12-C11	5.10	117.07	111.04
3	A	1005	849	C13-C12-C11	5.09	117.06	111.04
3	D	1005	849	C13-C12-C11	5.06	117.03	111.04
3	C	1005	849	C13-C12-C11	4.93	116.88	111.04
3	A	1005	849	C2-C1-C5	-4.88	118.75	122.00
2	B	1001	SFG	C5-C6-N6	4.43	127.08	120.35
3	D	1005	849	C15-C16-C11	4.01	115.79	111.04

*Continued on next page...*

*Continued from previous page...*

Mol	Chain	Res	Type	Atoms	Z	Observed(°)	Ideal(°)
3	A	1005	849	C15-C16-C11	3.90	115.66	111.04
2	C	1001	SFG	C5-C6-N6	3.83	126.18	120.35
3	C	1005	849	C15-C16-C11	3.81	115.55	111.04
2	A	1001	SFG	C5-C6-N6	3.80	126.13	120.35
2	D	1001	SFG	C5-C6-N6	3.74	126.03	120.35
3	B	1005	849	C15-C16-C11	3.73	115.45	111.04
2	B	1001	SFG	N3-C2-N1	-2.94	124.08	128.68
2	A	1001	SFG	N3-C2-N1	-2.85	124.23	128.68
2	D	1001	SFG	N3-C2-N1	-2.83	124.25	128.68
2	C	1001	SFG	N3-C2-N1	-2.81	124.28	128.68
2	D	1001	SFG	O2'-C2'-C3'	2.45	119.73	111.82
2	B	1001	SFG	C5-C6-N1	-2.43	114.83	120.35
2	D	1001	SFG	C5-C6-N1	-2.41	114.89	120.35
3	B	1005	849	C15-N14-C13	2.38	114.19	108.83
3	C	1005	849	C15-N14-C13	2.38	114.19	108.83
2	A	1001	SFG	C5-C6-N1	-2.34	115.05	120.35
2	C	1001	SFG	C5-C6-N1	-2.24	115.27	120.35
2	C	1001	SFG	C1'-N9-C4	2.19	130.49	126.64
2	A	1001	SFG	O2'-C2'-C3'	2.11	118.64	111.82
2	B	1001	SFG	C1'-N9-C4	2.10	130.33	126.64
2	D	1001	SFG	C1'-N9-C4	2.10	130.33	126.64
2	C	1001	SFG	O2'-C2'-C3'	2.09	118.59	111.82
3	C	1005	849	C12-C11-C2	2.07	117.64	112.79
3	B	1005	849	C3-C4-C6	-2.06	118.24	120.84
3	B	1005	849	C12-C11-C2	2.05	117.59	112.79
3	D	1005	849	O26-C21-C10	2.05	119.31	116.26
3	D	1005	849	C15-N14-C13	2.03	113.39	108.83

There are no chirality outliers.

All (25) torsion outliers are listed below:

Mol	Chain	Res	Type	Atoms
2	D	1001	SFG	NE-CD-CG-CB
2	D	1001	SFG	C5'-CD-CG-CB
2	C	1001	SFG	C5'-CD-CG-CB
3	C	1005	849	C25-C10-C8-N7
3	D	1005	849	C25-C10-C8-N7
2	B	1001	SFG	NE-CD-CG-CB
2	B	1001	SFG	C5'-CD-CG-CB
3	B	1005	849	C25-C10-C8-N7
2	A	1001	SFG	NE-CD-CG-CB
2	C	1001	SFG	NE-CD-CG-CB

*Continued on next page...*

*Continued from previous page...*

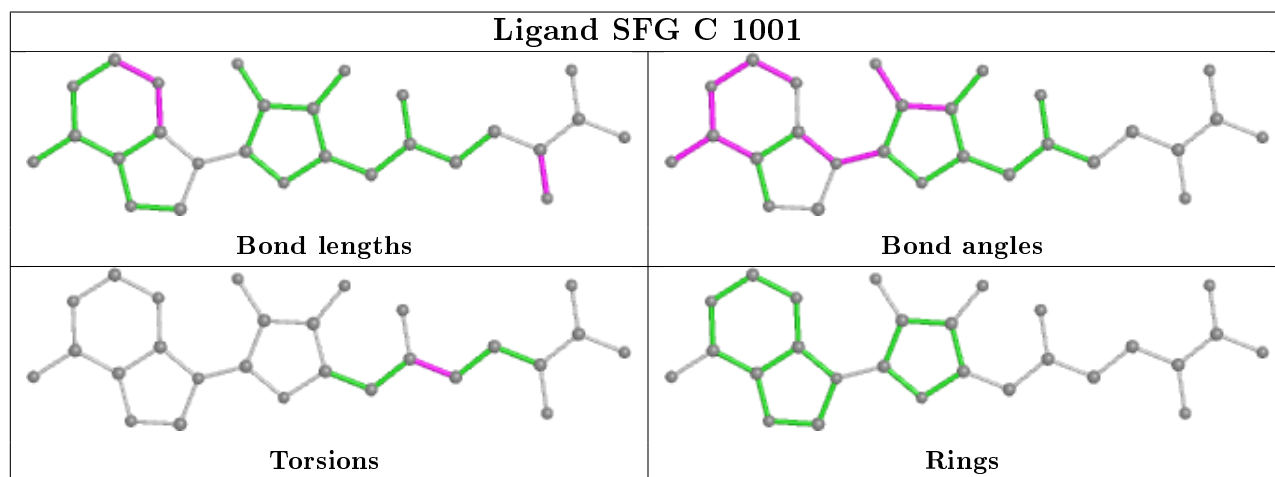
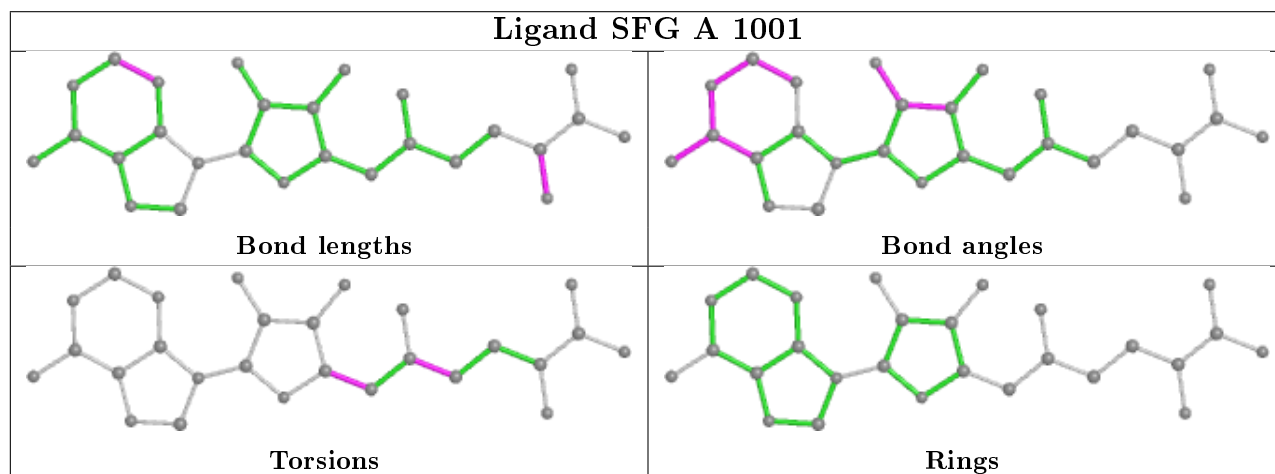
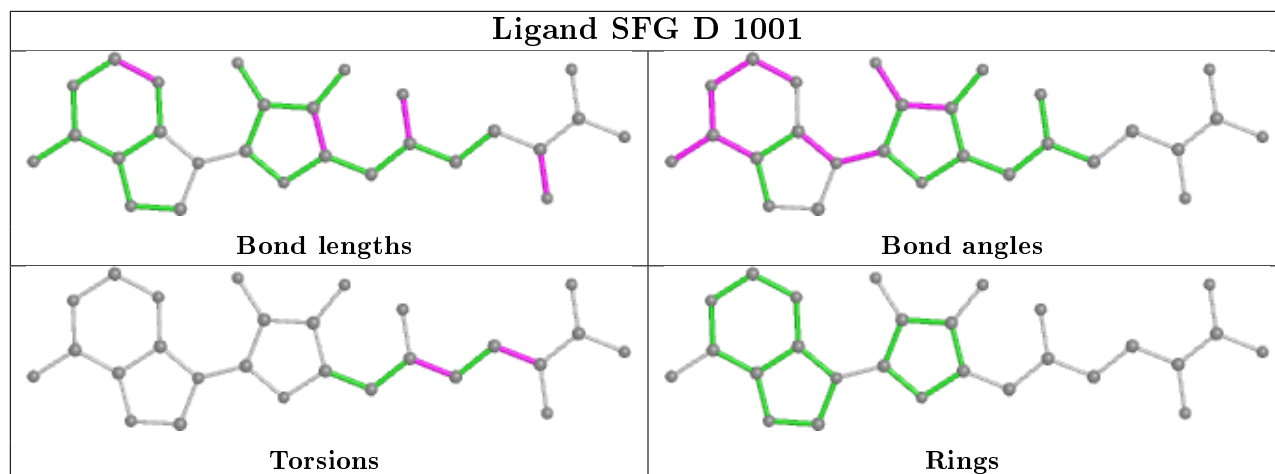
Mol	Chain	Res	Type	Atoms
2	A	1001	SFG	C5'-CD-CG-CB
3	A	1005	849	C25-C10-C8-N7
2	A	1001	SFG	O4'-C4'-C5'-CD
2	B	1001	SFG	O4'-C4'-C5'-CD
3	A	1005	849	C12-C11-C2-C1
2	A	1001	SFG	C3'-C4'-C5'-CD
3	D	1005	849	C12-C11-C2-C1
3	B	1005	849	C12-C11-C2-C1
3	C	1005	849	C12-C11-C2-C1
3	A	1005	849	C12-C11-C2-C3
3	D	1005	849	C12-C11-C2-C3
3	B	1005	849	C12-C11-C2-C3
3	C	1005	849	C12-C11-C2-C3
2	D	1001	SFG	N-CA-CB-CG
3	D	1005	849	C18-C17-N14-C13

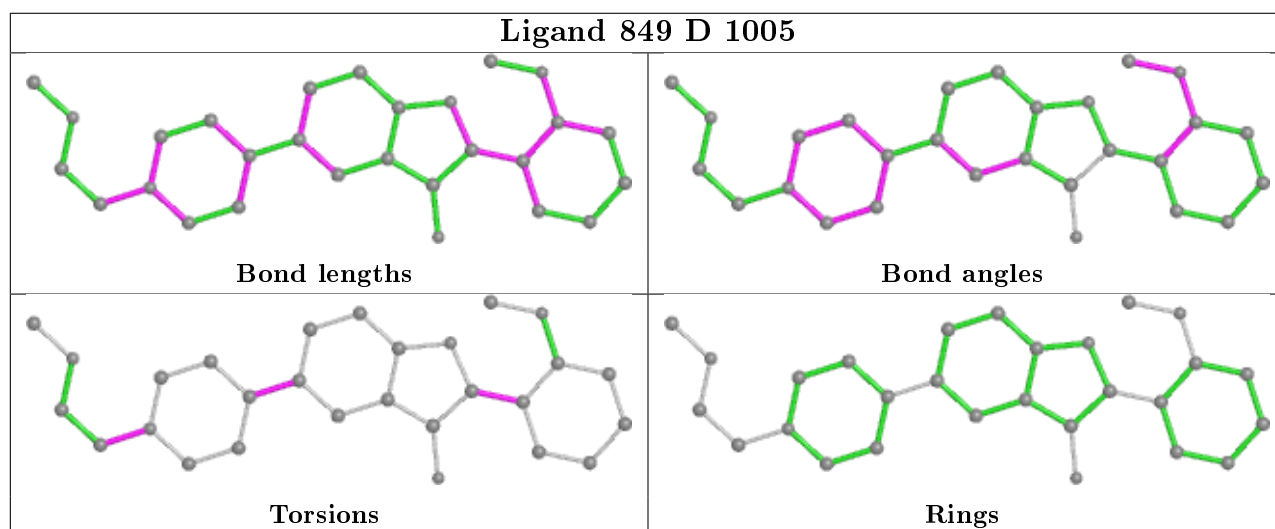
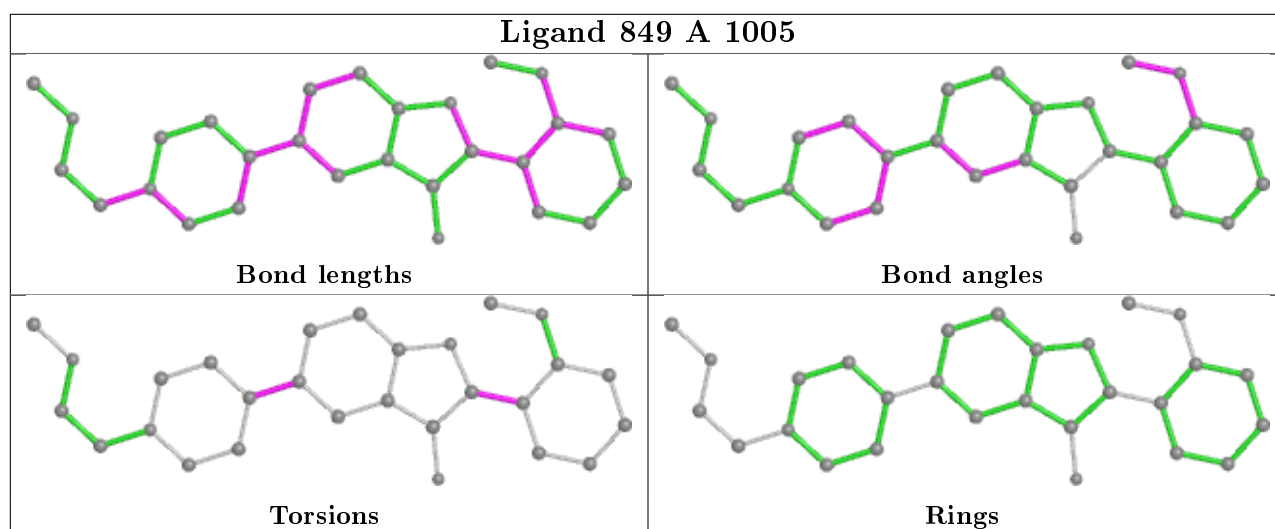
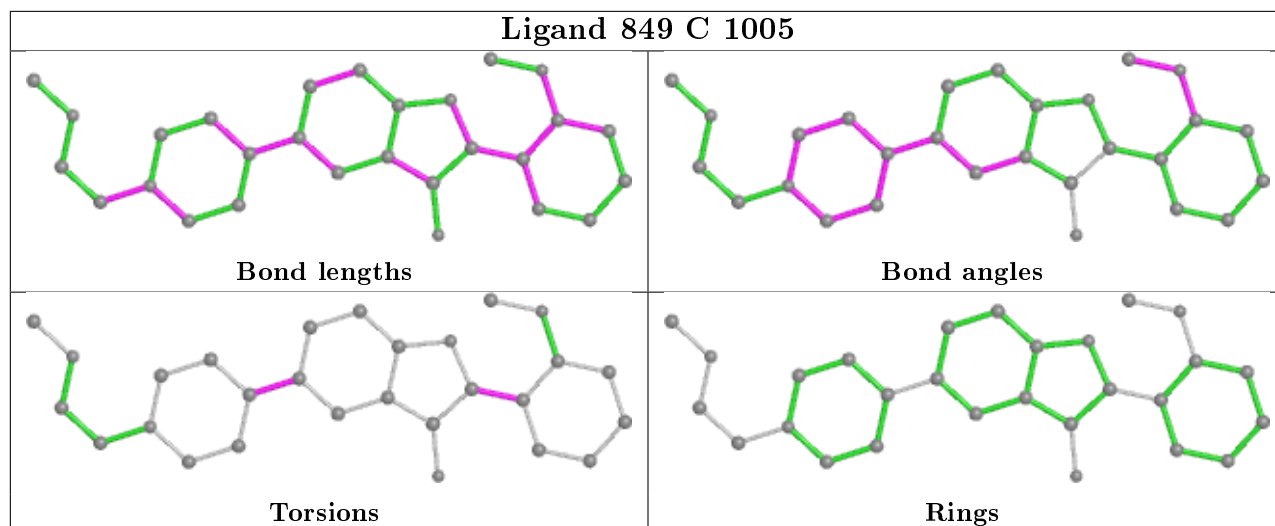
There are no ring outliers.

8 monomers are involved in 22 short contacts:

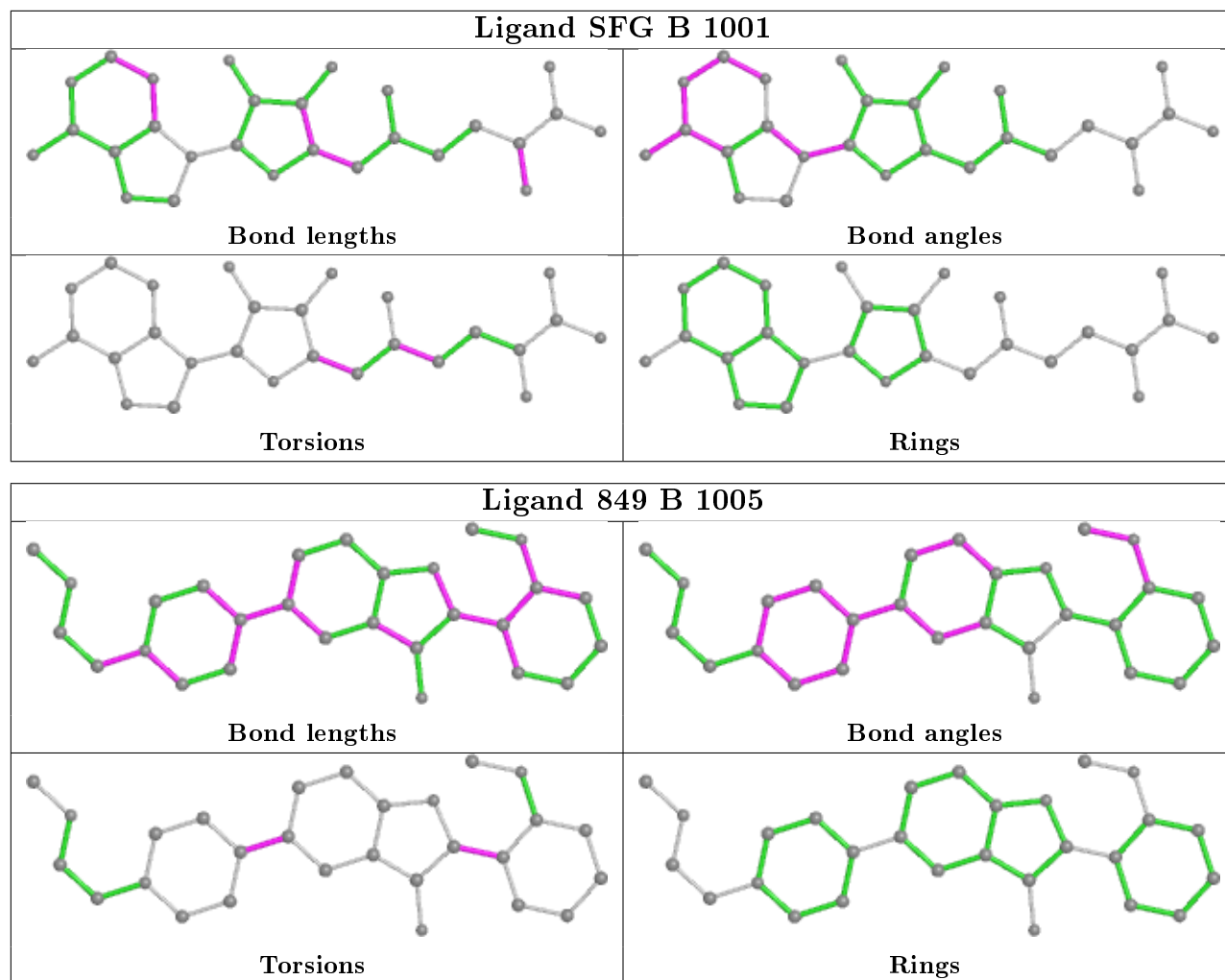
Mol	Chain	Res	Type	Clashes	Symm-Clashes
2	D	1001	SFG	2	0
2	A	1001	SFG	2	0
2	C	1001	SFG	1	0
3	C	1005	849	5	0
3	A	1005	849	7	0
3	D	1005	849	5	0
2	B	1001	SFG	1	0
3	B	1005	849	4	0

The following is a two-dimensional graphical depiction of Mogul quality analysis of bond lengths, bond angles, torsion angles, and ring geometry for all instances of the Ligand of Interest. In addition, ligands with molecular weight > 250 and outliers as shown on the validation Tables will also be included. For torsion angles, if less than 5% of the Mogul distribution of torsion angles is within 10 degrees of the torsion angle in question, then that torsion angle is considered an outlier. Any bond that is central to one or more torsion angles identified as an outlier by Mogul will be highlighted in the graph. For rings, the root-mean-square deviation (RMSD) between the ring in question and similar rings identified by Mogul is calculated over all ring torsion angles. If the average RMSD is greater than 60 degrees and the minimal RMSD between the ring in question and any Mogul-identified rings is also greater than 60 degrees, then that ring is considered an outlier. The outliers are highlighted in purple. The color gray indicates Mogul did not find sufficient equivalents in the CSD to analyse the geometry.









## 5.7 Other polymers [\(i\)](#)

There are no such residues in this entry.

## 5.8 Polymer linkage issues [\(i\)](#)

There are no chain breaks in this entry.

## 6 Fit of model and data

### 6.1 Protein, DNA and RNA chains

In the following table, the column labelled ‘#RSRZ> 2’ contains the number (and percentage) of RSRZ outliers, followed by percent RSRZ outliers for the chain as percentile scores relative to all X-ray entries and entries of similar resolution. The OWAB column contains the minimum, median, 95<sup>th</sup> percentile and maximum values of the occupancy-weighted average B-factor per residue. The column labelled ‘Q< 0.9’ lists the number of (and percentage) of residues with an average occupancy less than 0.9.

Mol	Chain	Analysed	<RSRZ>	#RSRZ>2	OWAB(Å <sup>2</sup> )	Q<0.9
1	A	344/348 (98%)	0.11	11 (3%) 47 54	21, 36, 53, 63	0
1	B	344/348 (98%)	0.04	5 (1%) 73 77	24, 37, 49, 62	0
1	C	344/348 (98%)	-0.03	8 (2%) 60 65	24, 36, 48, 63	0
1	D	344/348 (98%)	0.00	5 (1%) 73 77	21, 33, 47, 55	0
All	All	1376/1392 (98%)	0.03	29 (2%) 63 68	21, 36, 49, 63	0

All (29) RSRZ outliers are listed below:

Mol	Chain	Res	Type	RSRZ
1	B	478	THR	4.8
1	C	479	GLY	4.3
1	A	478	THR	4.1
1	C	144	GLU	3.7
1	C	478	THR	3.6
1	A	477	TYR	3.6
1	D	478	THR	3.5
1	B	479	GLY	3.4
1	C	477	TYR	3.2
1	B	477	TYR	2.8
1	A	148	VAL	2.8
1	A	400	ILE	2.7
1	D	477	TYR	2.7
1	D	234	ASP	2.7
1	D	256	ILE	2.5
1	D	192	VAL	2.5
1	A	234	ASP	2.4
1	A	256	ILE	2.4
1	C	315	TYR	2.4
1	A	479	GLY	2.4
1	A	257	SER	2.3

*Continued on next page...*

*Continued from previous page...*

Mol	Chain	Res	Type	RSRZ
1	A	221	GLN	2.3
1	B	144	GLU	2.3
1	A	144	GLU	2.3
1	C	248	LEU	2.2
1	C	378	HIS	2.2
1	C	347	ARG	2.1
1	B	261	GLY	2.0
1	A	270	LEU	2.0

## 6.2 Non-standard residues in protein, DNA, RNA chains [i](#)

There are no non-standard protein/DNA/RNA residues in this entry.

## 6.3 Carbohydrates [i](#)

There are no carbohydrates in this entry.

## 6.4 Ligands [i](#)

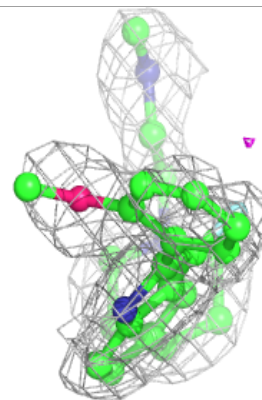
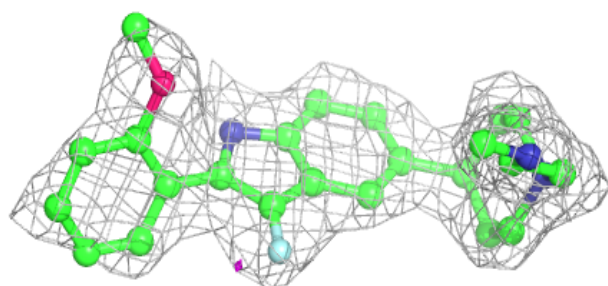
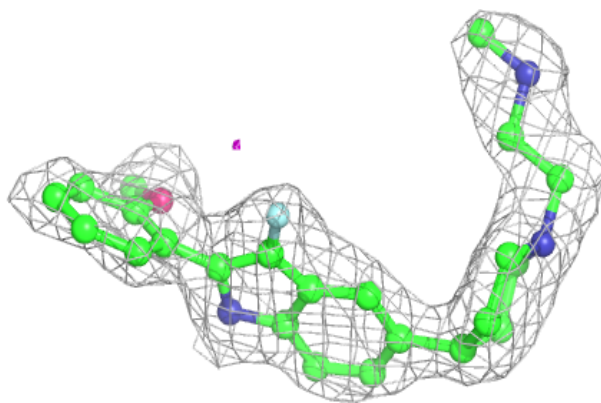
In the following table, the Atoms column lists the number of modelled atoms in the group and the number defined in the chemical component dictionary. The B-factors column lists the minimum, median, 95<sup>th</sup> percentile and maximum values of B factors of atoms in the group. The column labelled 'Q< 0.9' lists the number of atoms with occupancy less than 0.9.

Mol	Type	Chain	Res	Atoms	RSCC	RSR	B-factors(Å <sup>2</sup> )	Q<0.9
3	849	B	1005	28/28	0.86	0.19	40,44,51,52	0
3	849	C	1005	28/28	0.87	0.17	37,45,51,52	0
3	849	A	1005	28/28	0.88	0.18	32,40,45,46	0
2	SFG	C	1001	27/27	0.92	0.14	27,30,38,40	0
3	849	D	1005	28/28	0.93	0.14	30,34,39,40	0
2	SFG	A	1001	27/27	0.93	0.15	29,33,39,40	0
2	SFG	B	1001	27/27	0.94	0.14	27,31,39,41	0
2	SFG	D	1001	27/27	0.96	0.15	23,26,35,37	0

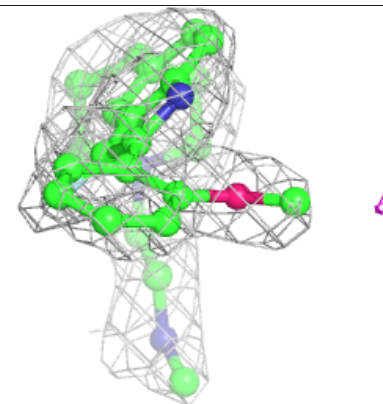
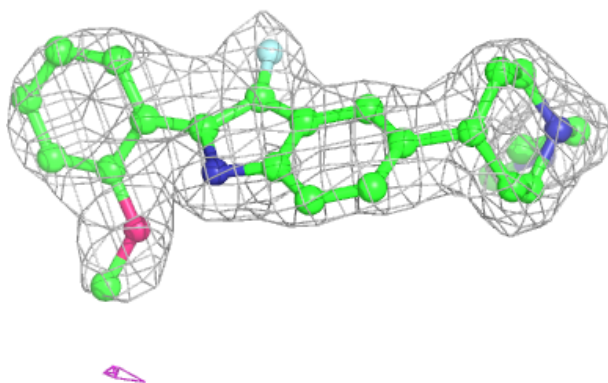
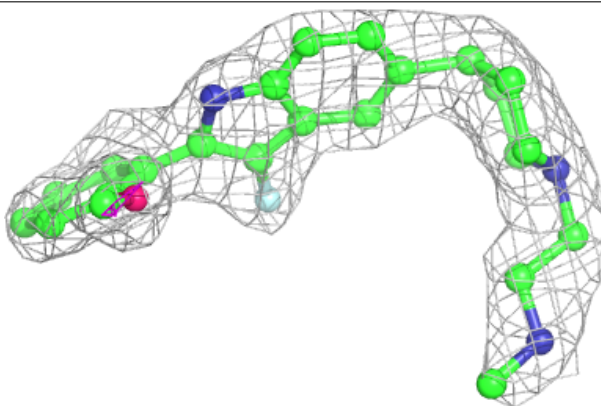
The following is a graphical depiction of the model fit to experimental electron density of all instances of the Ligand of Interest. In addition, ligands with molecular weight > 250 and outliers as shown on the geometry validation Tables will also be included. Each fit is shown from different orientation to approximate a three-dimensional view.

**Electron density around 849 B 1005:**

$2mF_o-DF_c$  (at 0.7 rmsd) in gray  
 $mF_o-DF_c$  (at 3 rmsd) in purple (negative)  
and green (positive)

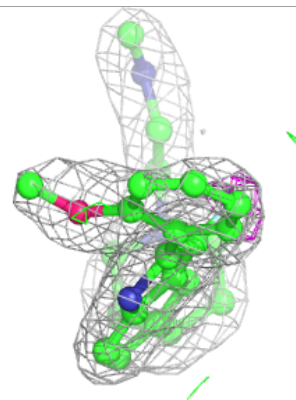
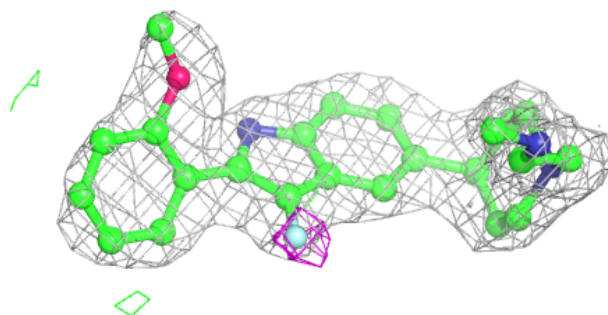
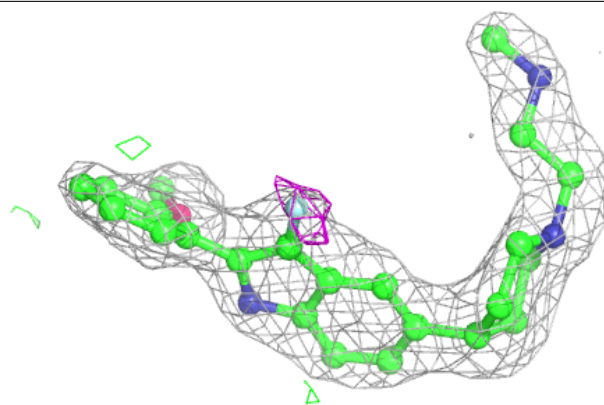
**Electron density around 849 C 1005:**

$2mF_o-DF_c$  (at 0.7 rmsd) in gray  
 $mF_o-DF_c$  (at 3 rmsd) in purple (negative)  
and green (positive)

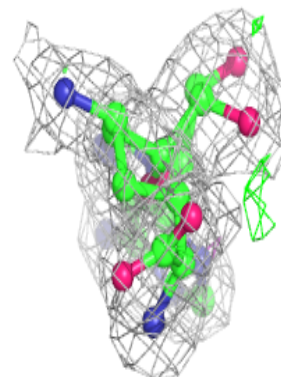
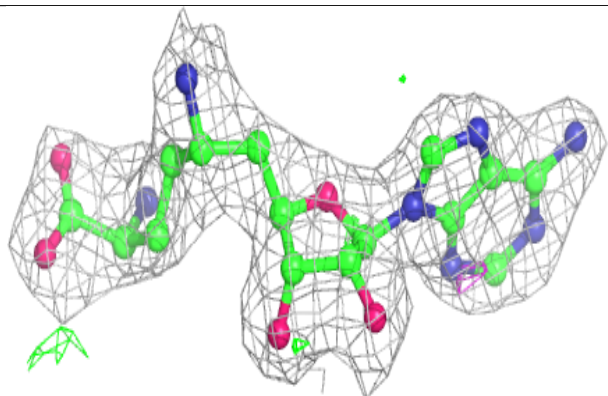
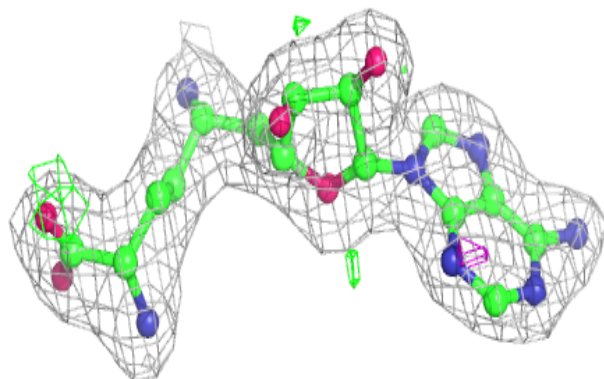


**Electron density around 849 A 1005:**

$2mF_o-DF_c$  (at 0.7 rmsd) in gray  
 $mF_o-DF_c$  (at 3 rmsd) in purple (negative)  
and green (positive)

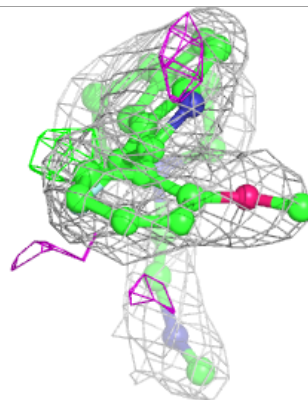
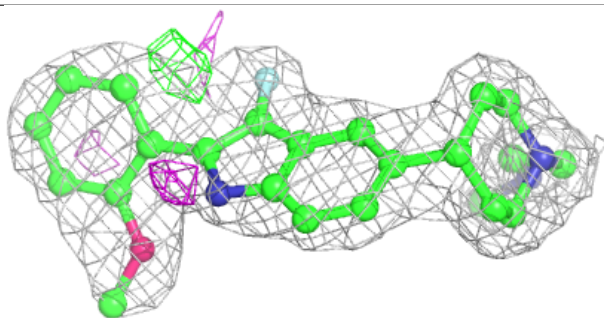
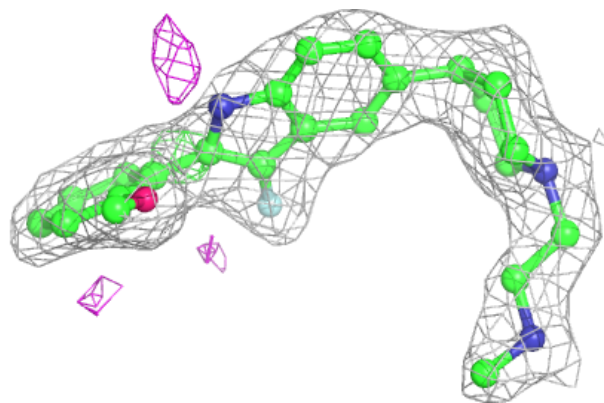
**Electron density around SFG C 1001:**

$2mF_o-DF_c$  (at 0.7 rmsd) in gray  
 $mF_o-DF_c$  (at 3 rmsd) in purple (negative)  
and green (positive)

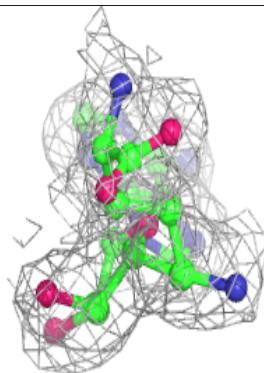
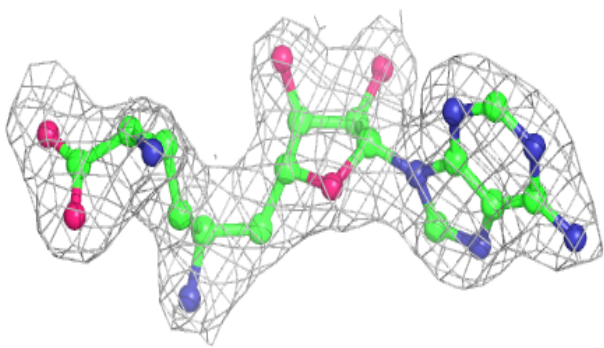
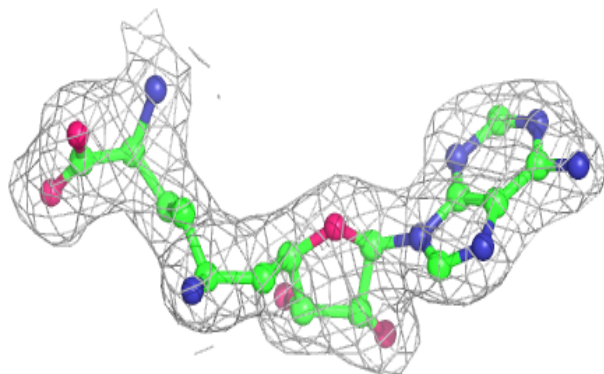


**Electron density around 849 D 1005:**

$2mF_o-DF_c$  (at 0.7 rmsd) in gray  
 $mF_o-DF_c$  (at 3 rmsd) in purple (negative)  
and green (positive)

**Electron density around SFG A 1001:**

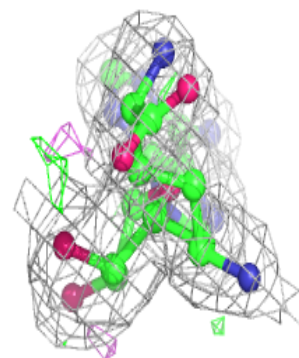
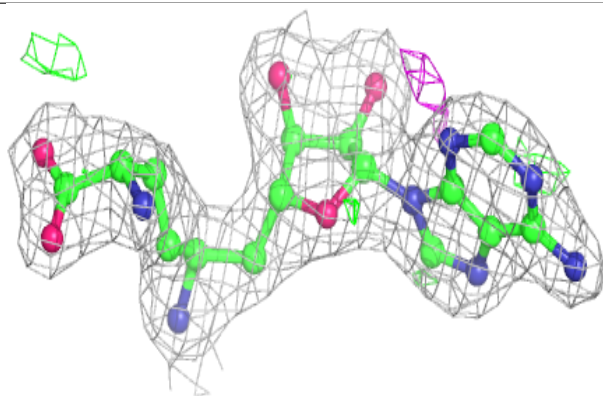
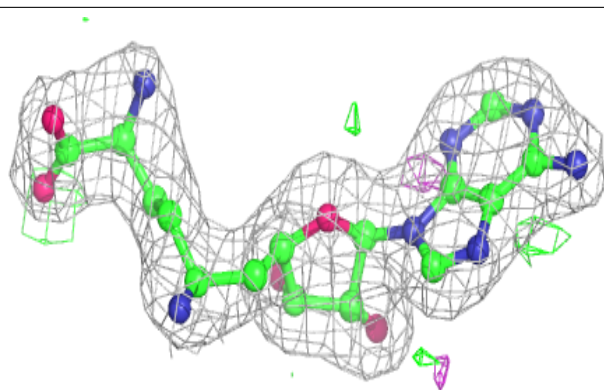
$2mF_o-DF_c$  (at 0.7 rmsd) in gray  
 $mF_o-DF_c$  (at 3 rmsd) in purple (negative)  
and green (positive)



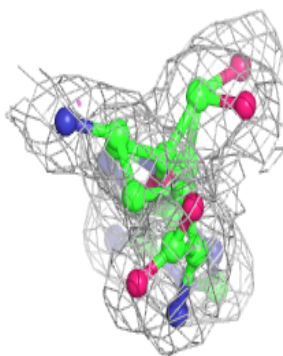
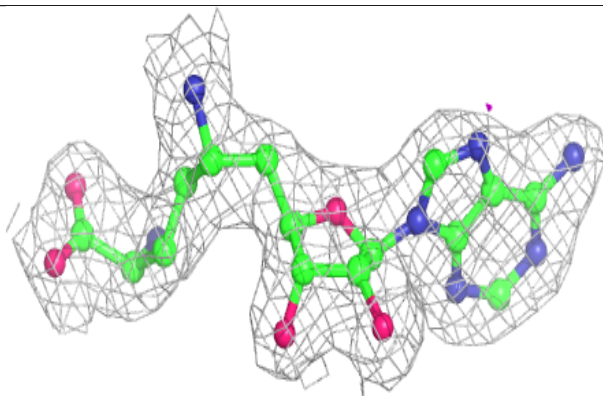
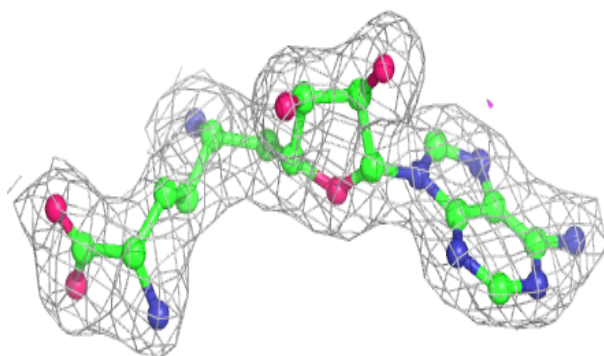


**Electron density around SFG B 1001:**

$2mF_o-DF_c$  (at 0.7 rmsd) in gray  
 $mF_o-DF_c$  (at 3 rmsd) in purple (negative)  
and green (positive)

**Electron density around SFG D 1001:**

$2mF_o-DF_c$  (at 0.7 rmsd) in gray  
 $mF_o-DF_c$  (at 3 rmsd) in purple (negative)  
and green (positive)



## 6.5 Other polymers [i](#)

There are no such residues in this entry.