



Full wwPDB X-ray Structure Validation Report ⓘ

Jan 7, 2025 – 03:52 PM JST

PDB ID : 8XSB
Title : Crystal structure of the DNA-bound AHR-ARNT heterodimer in complex with Indirubin
Authors : Diao, X.; Shang, Q.; Wu, D.
Deposited on : 2024-01-09
Resolution : 3.06 Å (reported)

This is a Full wwPDB X-ray Structure Validation Report for a publicly released PDB entry.

We welcome your comments at validation@mail.wwpdb.org

A user guide is available at

<https://www.wwpdb.org/validation/2017/XrayValidationReportHelp>

with specific help available everywhere you see the ⓘ symbol.

The types of validation reports are described at

<http://www.wwpdb.org/validation/2017/FAQs#types>.

The following versions of software and data (see [references ⓘ](#)) were used in the production of this report:

MolProbity : 4.02b-467
Mogul : 1.8.5 (274361), CSD as541be (2020)
Xtrriage (Phenix) : 1.21
EDS : 3.0
buster-report : 1.1.7 (2018)
Percentile statistics : 20231227.v01 (using entries in the PDB archive December 27th 2023)
CCP4 : 9.0.004 (Gargrove)
Density-Fitness : 1.0.11
Ideal geometry (proteins) : Engh & Huber (2001)
Ideal geometry (DNA, RNA) : Parkinson et al. (1996)
Validation Pipeline (wwPDB-VP) : 2.40

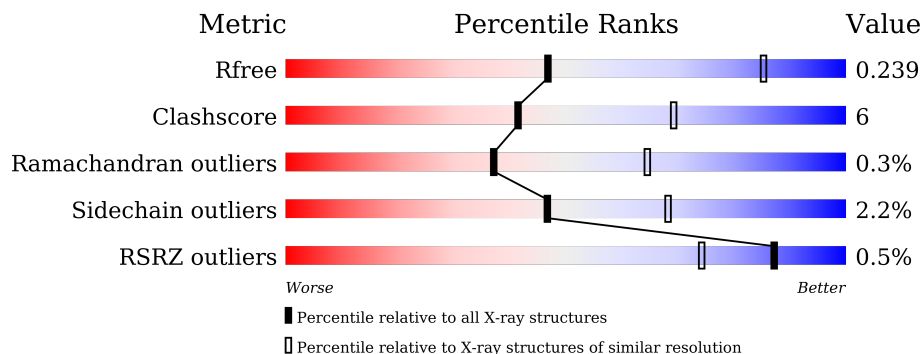
1 Overall quality at a glance

The following experimental techniques were used to determine the structure:

X-RAY DIFFRACTION

The reported resolution of this entry is 3.06 Å.

Percentile scores (ranging between 0-100) for global validation metrics of the entry are shown in the following graphic. The table shows the number of entries on which the scores are based.



Metric	Whole archive (#Entries)	Similar resolution (#Entries, resolution range(Å))
R_{free}	164625	2258 (3.10-3.02)
Clashscore	180529	2399 (3.10-3.02)
Ramachandran outliers	177936	2269 (3.10-3.02)
Sidechain outliers	177891	2268 (3.10-3.02)
RSRZ outliers	164620	2258 (3.10-3.02)

The table below summarises the geometric issues observed across the polymeric chains and their fit to the electron density. The red, orange, yellow and green segments of the lower bar indicate the fraction of residues that contain outliers for ≥ 3 , 2, 1 and 0 types of geometric quality criteria respectively. A grey segment represents the fraction of residues that are not modelled. The numeric value for each fraction is indicated below the corresponding segment, with a dot representing fractions $\leq 5\%$. The upper red bar (where present) indicates the fraction of residues that have poor fit to the electron density. The numeric value is given above the bar.

Mol	Chain	Length	Quality of chain
1	A	382	
2	B	395	
3	C	21	
4	D	21	

2 Entry composition [i](#)

There are 6 unique types of molecules in this entry. The entry contains 5912 atoms, of which 0 are hydrogens and 0 are deuteriums.

In the tables below, the ZeroOcc column contains the number of atoms modelled with zero occupancy, the AltConf column contains the number of residues with at least one atom in alternate conformation and the Trace column contains the number of residues modelled with at most 2 atoms.

- Molecule 1 is a protein called Aryl hydrocarbon receptor nuclear translocator.

Mol	Chain	Residues	Atoms					ZeroOcc	AltConf	Trace
			Total	C	N	O	S			
1	A	290	2359	1489	416	437	17	0	1	0

There is a discrepancy between the modelled and reference sequences:

Chain	Residue	Modelled	Actual	Comment	Reference
A	84	MET	-	initiating methionine	UNP P27540

- Molecule 2 is a protein called Aryl hydrocarbon receptor.

Mol	Chain	Residues	Atoms					ZeroOcc	AltConf	Trace
			Total	C	N	O	S			
2	B	327	2655	1696	472	473	14	0	0	0

There are 7 discrepancies between the modelled and reference sequences:

Chain	Residue	Modelled	Actual	Comment	Reference
B	25	MET	-	initiating methionine	UNP I3LF82
B	414	HIS	-	expression tag	UNP I3LF82
B	415	HIS	-	expression tag	UNP I3LF82
B	416	HIS	-	expression tag	UNP I3LF82
B	417	HIS	-	expression tag	UNP I3LF82
B	418	HIS	-	expression tag	UNP I3LF82
B	419	HIS	-	expression tag	UNP I3LF82

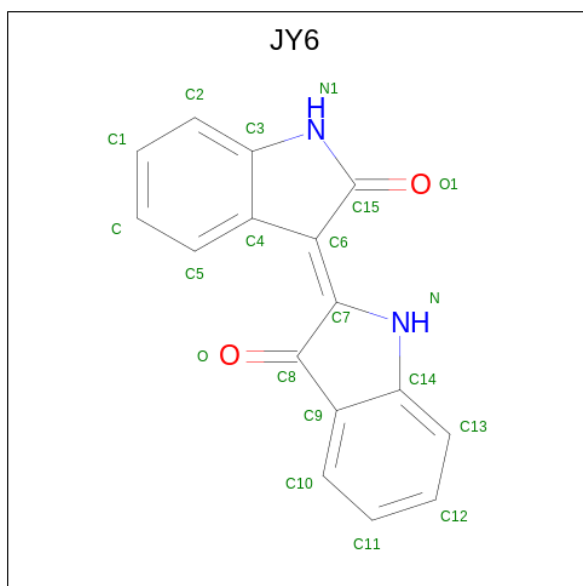
- Molecule 3 is a DNA chain called DNAF.

Mol	Chain	Residues	Atoms					ZeroOcc	AltConf	Trace
			Total	C	N	O	P			
3	C	21	430	204	84	122	20	0	0	0

- Molecule 4 is a DNA chain called DNAR.

Mol	Chain	Residues	Atoms					ZeroOcc	AltConf	Trace
			Total	C	N	O	P			
4	D	21	425	203	76	126	20	0	0	0


- Molecule 5 is (3 {Z})-3-(3-oxidanylidene-1 {H}-indol-2-ylidene)-1 {H}-indol-2-one (three-letter code: JY6) (formula: C₁₆H₁₀N₂O₂) (labeled as "Ligand of Interest" by depositor).



Mol	Chain	Residues	Atoms				ZeroOcc	AltConf
			Total	C	N	O		
5	B	1	20	16	2	2	0	0

- Molecule 6 is water.

Mol	Chain	Residues	Atoms	ZeroOcc	AltConf
6	A	9	Total O 9 9	0	0
6	B	14	Total O 14 14	0	0

Chain D:  38% 62%

G1	C9	G10	C11	G12	A13	T14	G15	C16	C17	C18	G19	A20	T21
----	----	-----	-----	-----	-----	-----	-----	-----	-----	-----	-----	-----	-----

4 Data and refinement statistics i

Property	Value	Source
Space group	P 1 21 1	Depositor
Cell constants a, b, c, α , β , γ	68.10Å 99.63Å 80.00Å 90.00° 90.51° 90.00°	Depositor
Resolution (Å)	36.00 – 3.06 36.00 – 3.06	Depositor EDS
% Data completeness (in resolution range)	98.6 (36.00-3.06) 98.8 (36.00-3.06)	Depositor EDS
R_{merge}	0.15	Depositor
R_{sym}	(Not available)	Depositor
$\langle I/\sigma(I) \rangle$ ¹	2.31 (at 3.07Å)	Xtrriage
Refinement program	PHENIX 1.14	Depositor
R, R_{free}	0.200 , 0.240 0.203 , 0.239	Depositor DCC
R_{free} test set	1004 reflections (5.00%)	wwPDB-VP
Wilson B-factor (Å ²)	57.4	Xtrriage
Anisotropy	0.414	Xtrriage
Bulk solvent k_{sol} (e/Å ³), B_{sol} (Å ²)	0.34 , 54.9	EDS
L-test for twinning ²	$\langle L \rangle = 0.50$, $\langle L^2 \rangle = 0.33$	Xtrriage
Estimated twinning fraction	0.028 for h,-k,-l	Xtrriage
F_o, F_c correlation	0.92	EDS
Total number of atoms	5912	wwPDB-VP
Average B, all atoms (Å ²)	61.0	wwPDB-VP

Xtrriage's analysis on translational NCS is as follows: *The largest off-origin peak in the Patterson function is 5.93% of the height of the origin peak. No significant pseudotranslation is detected.*

¹Intensities estimated from amplitudes.

²Theoretical values of $\langle |L| \rangle$, $\langle L^2 \rangle$ for acentric reflections are 0.5, 0.333 respectively for untwinned datasets, and 0.375, 0.2 for perfectly twinned datasets.

5 Model quality [i](#)

5.1 Standard geometry [i](#)

Bond lengths and bond angles in the following residue types are not validated in this section: JY6

The Z score for a bond length (or angle) is the number of standard deviations the observed value is removed from the expected value. A bond length (or angle) with $|Z| > 5$ is considered an outlier worth inspection. RMSZ is the root-mean-square of all Z scores of the bond lengths (or angles).

Mol	Chain	Bond lengths		Bond angles	
		RMSZ	# Z >5	RMSZ	# Z >5
1	A	0.26	0/2409	0.42	0/3251
2	B	0.26	0/2706	0.44	0/3640
3	C	0.52	0/483	0.84	0/744
4	D	0.50	0/475	0.91	0/731
All	All	0.31	0/6073	0.54	0/8366

There are no bond length outliers.

There are no bond angle outliers.

There are no chirality outliers.

There are no planarity outliers.

5.2 Too-close contacts [i](#)

In the following table, the Non-H and H(model) columns list the number of non-hydrogen atoms and hydrogen atoms in the chain respectively. The H(added) column lists the number of hydrogen atoms added and optimized by MolProbity. The Clashes column lists the number of clashes within the asymmetric unit, whereas Symm-Clashes lists symmetry-related clashes.

Mol	Chain	Non-H	H(model)	H(added)	Clashes	Symm-Clashes
1	A	2359	0	2316	30	0
2	B	2655	0	2682	31	0
3	C	430	0	236	11	1
4	D	425	0	238	12	1
5	B	20	0	0	0	0
6	A	9	0	0	0	0
6	B	14	0	0	0	0
All	All	5912	0	5472	72	1

The all-atom clashscore is defined as the number of clashes found per 1000 atoms (including

hydrogen atoms). The all-atom clashscore for this structure is 6.

All (72) close contacts within the same asymmetric unit are listed below, sorted by their clash magnitude.

Atom-1	Atom-2	Interatomic distance (Å)	Clash overlap (Å)
1:A:366:ARG:HB2	1:A:375:PHE:HB3	1.70	0.72
1:A:172:ALA:HB3	2:B:266:ILE:HD12	1.70	0.72
1:A:418:LEU:HB3	1:A:421:GLN:HG3	1.73	0.71
2:B:280:THR:HG22	2:B:283:PHE:CE2	2.31	0.66
2:B:362:GLN:OE1	2:B:382:ARG:NH2	2.28	0.66
2:B:342:GLY:HA2	2:B:367:LEU:HD12	1.77	0.65
1:A:209:LEU:HG	1:A:221:LEU:HD21	1.79	0.64
4:D:13:DA:H2''	4:D:14:DT:H5''	1.80	0.64
3:C:4:DC:H2''	3:C:5:DG:C8	2.34	0.62
4:D:11:DC:H2''	4:D:12:DG:C8	2.35	0.62
1:A:96:GLU:O	1:A:100:ARG:HG2	1.99	0.62
2:B:170:GLN:HA	2:B:173:LEU:HB2	1.86	0.58
3:C:7:DG:H22	4:D:16:DC:H5	1.52	0.57
4:D:12:DG:H2''	4:D:13:DA:C8	2.40	0.56
1:A:203:GLU:O	1:A:212:GLN:NE2	2.39	0.56
1:A:172:ALA:CB	2:B:266:ILE:HD12	2.37	0.54
1:A:207:SER:OG	1:A:208:THR:N	2.40	0.54
3:C:2:DA:H2'	3:C:3:DT:C6	2.43	0.54
1:A:128:LYS:NZ	3:C:12:DG:OP2	2.26	0.53
2:B:121:LEU:HD22	2:B:266:ILE:HD13	1.91	0.53
4:D:15:DG:H2''	4:D:16:DC:O2	2.08	0.53
3:C:7:DG:H1	4:D:16:DC:H5	1.55	0.52
1:A:174:GLY:HA2	1:A:341:GLY:O	2.10	0.52
1:A:214:HIS:CD2	1:A:215:PRO:HD2	2.45	0.52
2:B:391:GLU:OE2	2:B:394:ARG:NH1	2.42	0.52
1:A:366:ARG:HD2	2:B:328:MET:CE	2.41	0.51
2:B:97:VAL:HG13	2:B:102:ARG:HG2	1.91	0.51
1:A:102:ARG:HH22	3:C:13:DC:H2'	1.75	0.51
4:D:14:DT:H2''	4:D:15:DG:H5'	1.93	0.51
2:B:240:ARG:HD2	2:B:242:LYS:HE3	1.93	0.50
4:D:9:DC:H2''	4:D:10:DG:C8	2.47	0.50
3:C:19:DA:H2''	3:C:20:DA:C8	2.48	0.49
1:A:215:PRO:HA	1:A:218:VAL:HG23	1.95	0.49
1:A:213:VAL:HG21	1:A:221:LEU:HD22	1.94	0.48
2:B:290:LYS:O	2:B:377:ILE:HD12	2.13	0.48
1:A:113:SER:HB3	1:A:131:ILE:HD13	1.95	0.47
1:A:377:ASP:OD1	1:A:378:HIS:N	2.47	0.47
3:C:6:DG:H2''	3:C:7:DG:C8	2.49	0.47

Continued on next page...

Continued from previous page...

Atom-1	Atom-2	Interatomic distance (Å)	Clash overlap (Å)
3:C:1:DC:H2'	3:C:2:DA:C8	2.49	0.47
1:A:378:HIS:HD2	1:A:388:PRO:HG2	1.79	0.47
2:B:130:THR:HG23	2:B:261:LEU:O	2.15	0.47
1:A:366:ARG:HD2	2:B:328:MET:HE3	1.98	0.46
1:A:416:VAL:HG13	1:A:454:ILE:HD12	1.96	0.46
4:D:20:DA:H2''	4:D:21:DT:H5''	1.97	0.46
1:A:188:TYR:HA	1:A:205:PHE:HE1	1.81	0.46
4:D:14:DT:H2'	4:D:15:DG:H21	1.81	0.45
2:B:74:VAL:O	2:B:78:ARG:HG3	2.16	0.45
1:A:191:ASP:N	1:A:191:ASP:OD1	2.50	0.45
2:B:327:ASP:OD1	2:B:396:ARG:NH2	2.50	0.45
1:A:170:GLU:HG3	2:B:242:LYS:HD2	1.99	0.45
2:B:294:THR:HA	2:B:318:THR:HA	1.98	0.45
1:A:426:MET:HE1	1:A:464:VAL:HG11	1.99	0.45
2:B:293:PHE:O	2:B:319:GLY:N	2.44	0.45
2:B:47:LEU:HD13	2:B:66:LYS:HB3	1.99	0.45
4:D:18:DC:H2''	4:D:19:DG:N7	2.33	0.43
2:B:127:VAL:HA	2:B:263:LEU:O	2.19	0.43
2:B:285:PHE:O	2:B:381:GLN:HG2	2.17	0.43
2:B:59:ASP:OD1	2:B:59:ASP:N	2.50	0.42
4:D:9:DC:H2''	4:D:10:DG:H8	1.84	0.42
2:B:38:ARG:NH1	3:C:9:DA:OP2	2.32	0.42
2:B:99:ASP:HA	2:B:102:ARG:HE	1.85	0.42
1:A:268:ARG:HD3	1:A:303:PHE:CZ	2.55	0.42
1:A:125:LYS:HA	1:A:126:PRO:HD3	1.83	0.41
3:C:6:DG:H2'	3:C:6:DG:N3	2.36	0.41
1:A:366:ARG:HD3	2:B:325:ALA:HB2	2.02	0.41
1:A:456:TYR:CE1	2:B:328:MET:HE1	2.55	0.41
2:B:131:ASP:N	2:B:131:ASP:OD1	2.51	0.41
1:A:85:ASP:OD1	1:A:85:ASP:N	2.52	0.41
2:B:124:PHE:CZ	2:B:235:MET:HE1	2.55	0.41
2:B:235:MET:HE3	2:B:267:ALA:HB1	2.01	0.40
2:B:271:GLN:OE1	2:B:271:GLN:N	2.54	0.40
1:A:178:ILE:HG12	1:A:338:VAL:HG13	2.03	0.40

All (1) symmetry-related close contacts are listed below. The label for Atom-2 includes the symmetry operator and encoded unit-cell translations to be applied.

Atom-1	Atom-2	Interatomic distance (Å)	Clash overlap (Å)
3:C:1:DC:O2	4:D:1:DG:N2[1_655]	2.14	0.06

5.3 Torsion angles [i](#)

5.3.1 Protein backbone [i](#)

In the following table, the Percentiles column shows the percent Ramachandran outliers of the chain as a percentile score with respect to all X-ray entries followed by that with respect to entries of similar resolution.

The Analysed column shows the number of residues for which the backbone conformation was analysed, and the total number of residues.

Mol	Chain	Analysed	Favoured	Allowed	Outliers	Percentiles	
1	A	279/382 (73%)	268 (96%)	10 (4%)	1 (0%)	30	58
2	B	317/395 (80%)	310 (98%)	6 (2%)	1 (0%)	37	64
All	All	596/777 (77%)	578 (97%)	16 (3%)	2 (0%)	37	64

All (2) Ramachandran outliers are listed below:

Mol	Chain	Res	Type
2	B	278	ILE
1	A	117	PRO

5.3.2 Protein sidechains [i](#)

In the following table, the Percentiles column shows the percent sidechain outliers of the chain as a percentile score with respect to all X-ray entries followed by that with respect to entries of similar resolution.

The Analysed column shows the number of residues for which the sidechain conformation was analysed, and the total number of residues.

Mol	Chain	Analysed	Rotameric	Outliers	Percentiles	
1	A	268/346 (78%)	263 (98%)	5 (2%)	52	72
2	B	288/347 (83%)	281 (98%)	7 (2%)	44	67
All	All	556/693 (80%)	544 (98%)	12 (2%)	47	68

All (12) residues with a non-rotameric sidechain are listed below:

Mol	Chain	Res	Type
1	A	86	LYS
1	A	203	GLU
1	A	315	TRP
1	A	369	ILE

Continued on next page...

Continued from previous page...

Mol	Chain	Res	Type
1	A	456	TYR
2	B	86	SER
2	B	171	ARG
2	B	252	LYS
2	B	279	ARG
2	B	366	ARG
2	B	394	ARG
2	B	396	ARG

Sometimes sidechains can be flipped to improve hydrogen bonding and reduce clashes. There are no such sidechains identified.

5.3.3 RNA [i](#)

There are no RNA molecules in this entry.

5.4 Non-standard residues in protein, DNA, RNA chains [i](#)

There are no non-standard protein/DNA/RNA residues in this entry.

5.5 Carbohydrates [i](#)

There are no oligosaccharides in this entry.

5.6 Ligand geometry [i](#)

1 ligand is modelled in this entry.

In the following table, the Counts columns list the number of bonds (or angles) for which Mogul statistics could be retrieved, the number of bonds (or angles) that are observed in the model and the number of bonds (or angles) that are defined in the Chemical Component Dictionary. The Link column lists molecule types, if any, to which the group is linked. The Z score for a bond length (or angle) is the number of standard deviations the observed value is removed from the expected value. A bond length (or angle) with $|Z| > 2$ is considered an outlier worth inspection. RMSZ is the root-mean-square of all Z scores of the bond lengths (or angles).

Mol	Type	Chain	Res	Link	Bond lengths			Bond angles		
					Counts	RMSZ	# $ Z > 2$	Counts	RMSZ	# $ Z > 2$
5	JY6	B	501	-	23,23,23	3.26	8 (34%)	33,34,34	1.35	5 (15%)

In the following table, the Chirals column lists the number of chiral outliers, the number of chiral centers analysed, the number of these observed in the model and the number defined in the Chemical Component Dictionary. Similar counts are reported in the Torsion and Rings columns. '-' means no outliers of that kind were identified.

Mol	Type	Chain	Res	Link	Chirals	Torsions	Rings
5	JY6	B	501	-	-	0/4/28/28	0/4/4/4

All (8) bond length outliers are listed below:

Mol	Chain	Res	Type	Atoms	Z	Observed(Å)	Ideal(Å)
5	B	501	JY6	O1-C15	8.96	1.40	1.23
5	B	501	JY6	C14-N	7.39	1.52	1.38
5	B	501	JY6	C6-C15	-5.27	1.38	1.50
5	B	501	JY6	C6-C7	4.95	1.53	1.40
5	B	501	JY6	C7-N	4.61	1.45	1.38
5	B	501	JY6	C4-C3	-3.04	1.37	1.41
5	B	501	JY6	C15-N1	-2.36	1.33	1.36
5	B	501	JY6	O-C8	-2.23	1.18	1.23

All (5) bond angle outliers are listed below:

Mol	Chain	Res	Type	Atoms	Z	Observed(°)	Ideal(°)
5	B	501	JY6	C9-C8-C7	3.59	107.86	105.04
5	B	501	JY6	C4-C6-C15	3.25	107.66	105.23
5	B	501	JY6	C3-N1-C15	-2.69	109.68	111.38
5	B	501	JY6	C13-C14-C9	-2.21	119.98	122.19
5	B	501	JY6	O1-C15-C6	-2.20	125.18	128.17

There are no chirality outliers.

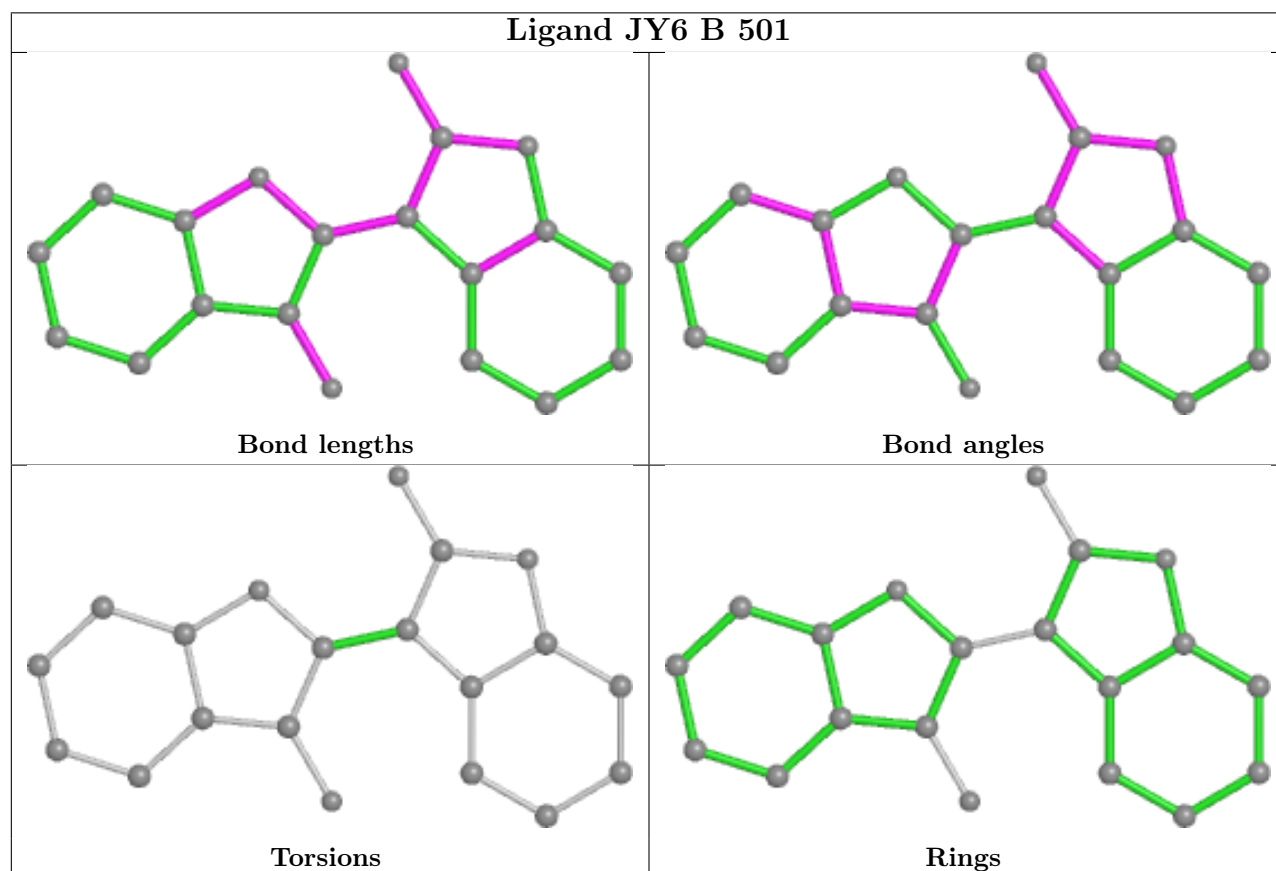
There are no torsion outliers.

There are no ring outliers.

No monomer is involved in short contacts.

The following is a two-dimensional graphical depiction of Mogul quality analysis of bond lengths, bond angles, torsion angles, and ring geometry for all instances of the Ligand of Interest. In addition, ligands with molecular weight > 250 and outliers as shown on the validation Tables will also be included. For torsion angles, if less than 5% of the Mogul distribution of torsion angles is within 10 degrees of the torsion angle in question, then that torsion angle is considered an outlier. Any bond that is central to one or more torsion angles identified as an outlier by Mogul will be highlighted in the graph. For rings, the root-mean-square deviation (RMSD) between the ring in question and similar rings identified by Mogul is calculated over all ring torsion angles. If the average RMSD is greater than 60 degrees and the minimal RMSD between the ring in question and any Mogul-identified rings is also greater than 60 degrees, then that ring is considered an outlier.

The outliers are highlighted in purple. The color gray indicates Mogul did not find sufficient equivalents in the CSD to analyse the geometry.



5.7 Other polymers [i](#)

There are no such residues in this entry.

5.8 Polymer linkage issues [i](#)

There are no chain breaks in this entry.

6 Fit of model and data [i](#)

6.1 Protein, DNA and RNA chains [i](#)

In the following table, the column labelled ‘#RSRZ> 2’ contains the number (and percentage) of RSRZ outliers, followed by percent RSRZ outliers for the chain as percentile scores relative to all X-ray entries and entries of similar resolution. The OWAB column contains the minimum, median, 95th percentile and maximum values of the occupancy-weighted average B-factor per residue. The column labelled ‘Q< 0.9’ lists the number of (and percentage) of residues with an average occupancy less than 0.9.

Mol	Chain	Analysed	<RSRZ>	#RSRZ>2	OWAB(Å ²)	Q<0.9
1	A	290/382 (75%)	-0.16	2 (0%) 84 69	23, 57, 90, 119	1 (0%)
2	B	327/395 (82%)	-0.26	1 (0%) 90 81	35, 53, 83, 109	0
3	C	21/21 (100%)	0.36	0 100 100	69, 78, 106, 109	0
4	D	21/21 (100%)	0.40	0 100 100	59, 82, 98, 111	0
All	All	659/819 (80%)	-0.18	3 (0%) 87 74	23, 56, 90, 119	1 (0%)

All (3) RSRZ outliers are listed below:

Mol	Chain	Res	Type	RSRZ
2	B	272	PRO	3.3
1	A	344	GLN	2.5
1	A	85	ASP	2.0

6.2 Non-standard residues in protein, DNA, RNA chains [i](#)

There are no non-standard protein/DNA/RNA residues in this entry.

6.3 Carbohydrates [i](#)

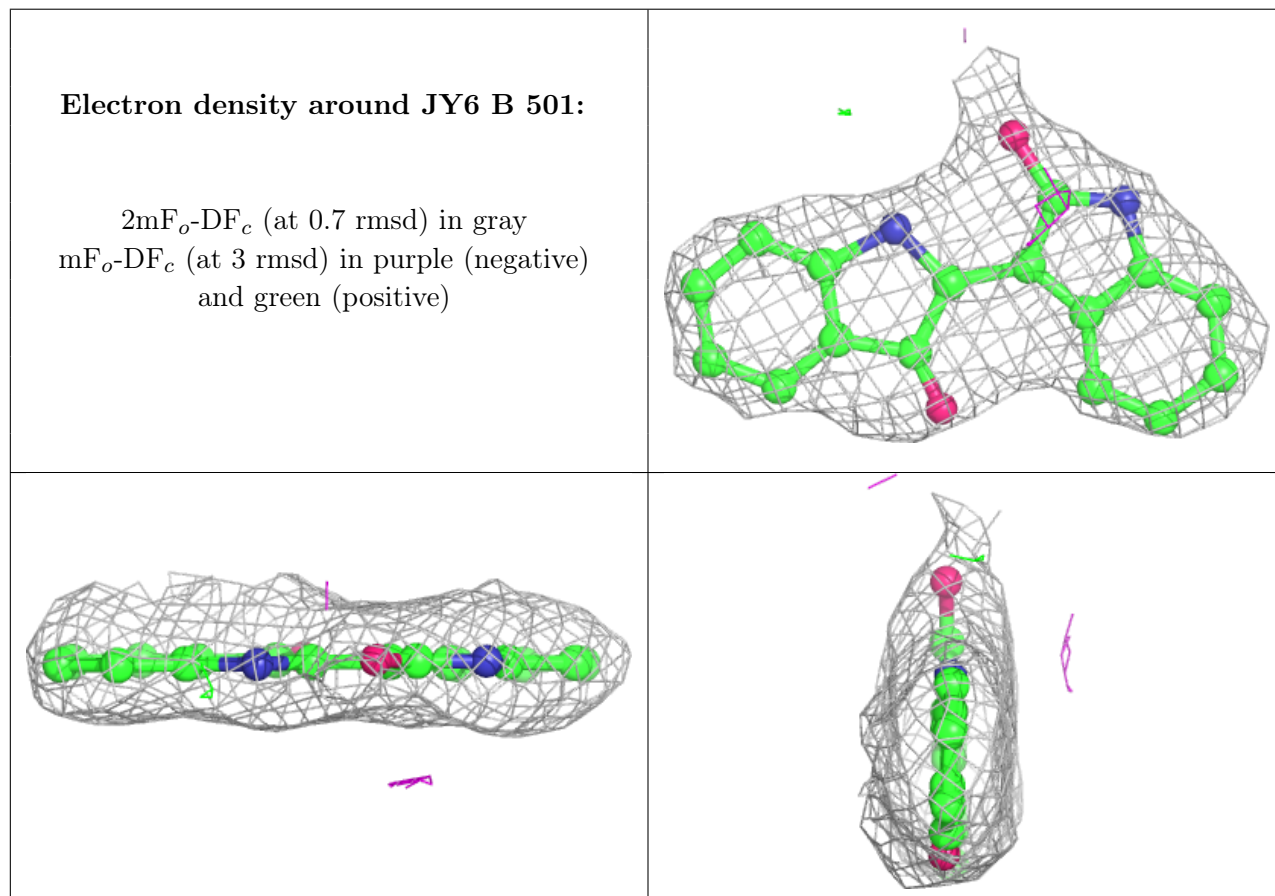
There are no monosaccharides in this entry.

6.4 Ligands [i](#)

In the following table, the Atoms column lists the number of modelled atoms in the group and the number defined in the chemical component dictionary. The B-factors column lists the minimum, median, 95th percentile and maximum values of B factors of atoms in the group. The column labelled ‘Q< 0.9’ lists the number of atoms with occupancy less than 0.9.

Mol	Type	Chain	Res	Atoms	RSCC	RSR	B-factors(\AA^2)	Q<0.9
5	JY6	B	501	20/20	0.97	0.07	35,40,49,52	0

The following is a graphical depiction of the model fit to experimental electron density of all instances of the Ligand of Interest. In addition, ligands with molecular weight > 250 and outliers as shown on the geometry validation Tables will also be included. Each fit is shown from different orientation to approximate a three-dimensional view.



6.5 Other polymers [\(i\)](#)

There are no such residues in this entry.