



Full wwPDB X-ray Structure Validation Report ⓘ

Nov 7, 2023 – 05:32 PM JST

PDB ID : 7XBO
Title : Crystal Structure of 10-dml-bound cytochrome P450 PikC with the unnatural amino acid p-Acetyl-L-Phenylalanine incorporated at position 238
Authors : Li, G.B.; Pan, Y.J.; Li, S.Y.; Gao, X.
Deposited on : 2022-03-21
Resolution : 2.20 Å(reported)

This is a Full wwPDB X-ray Structure Validation Report for a publicly released PDB entry.

We welcome your comments at validation@mail.wwpdb.org

A user guide is available at

<https://www.wwpdb.org/validation/2017/XrayValidationReportHelp>

with specific help available everywhere you see the ⓘ symbol.

The types of validation reports are described at

<http://www.wwpdb.org/validation/2017/FAQs#types>.

The following versions of software and data (see [references ⓘ](#)) were used in the production of this report:

MolProbity : 4.02b-467
Mogul : 1.8.5 (274361), CSD as541be (2020)
Xtriage (Phenix) : 1.13
EDS : 2.36
buster-report : 1.1.7 (2018)
Percentile statistics : 20191225.v01 (using entries in the PDB archive December 25th 2019)
Refmac : 5.8.0158
CCP4 : 7.0.044 (Gargrove)
Ideal geometry (proteins) : Engh & Huber (2001)
Ideal geometry (DNA, RNA) : Parkinson et al. (1996)
Validation Pipeline (wwPDB-VP) : 2.36

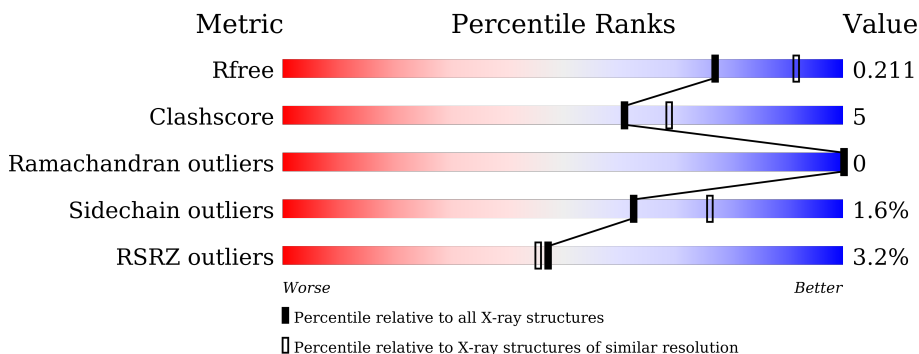
1 Overall quality at a glance

The following experimental techniques were used to determine the structure:

X-RAY DIFFRACTION

The reported resolution of this entry is 2.20 Å.

Percentile scores (ranging between 0-100) for global validation metrics of the entry are shown in the following graphic. The table shows the number of entries on which the scores are based.



Metric	Whole archive (#Entries)	Similar resolution (#Entries, resolution range(Å))
R_{free}	130704	4898 (2.20-2.20)
Clashscore	141614	5594 (2.20-2.20)
Ramachandran outliers	138981	5503 (2.20-2.20)
Sidechain outliers	138945	5504 (2.20-2.20)
RSRZ outliers	127900	4800 (2.20-2.20)

The table below summarises the geometric issues observed across the polymeric chains and their fit to the electron density. The red, orange, yellow and green segments of the lower bar indicate the fraction of residues that contain outliers for ≥ 3 , 2, 1 and 0 types of geometric quality criteria respectively. A grey segment represents the fraction of residues that are not modelled. The numeric value for each fraction is indicated below the corresponding segment, with a dot representing fractions $\leq 5\%$. The upper red bar (where present) indicates the fraction of residues that have poor fit to the electron density. The numeric value is given above the bar.

Mol	Chain	Length	Quality of chain
1	A	444	 3% 80% 9% 11%
1	B	444	 3% 79% 9% 11%

2 Entry composition i

There are 6 unique types of molecules in this entry. The entry contains 6811 atoms, of which 0 are hydrogens and 0 are deuteriums.

In the tables below, the ZeroOcc column contains the number of atoms modelled with zero occupancy, the AltConf column contains the number of residues with at least one atom in alternate conformation and the Trace column contains the number of residues modelled with at most 2 atoms.

- Molecule 1 is a protein called Cytochrome P450 monooxygenase PikC.

Mol	Chain	Residues	Atoms					ZeroOcc	AltConf	Trace
			Total	C	N	O	S			
1	A	394	Total 3073	C 1940	N 550	O 570	S 13	0	0	0
1	B	393	Total 3068	C 1937	N 549	O 569	S 13	0	0	0

There are 58 discrepancies between the modelled and reference sequences:

Chain	Residue	Modelled	Actual	Comment	Reference
A	-19	MET	-	initiating methionine	UNP O87605
A	-18	GLY	-	expression tag	UNP O87605
A	-17	SER	-	expression tag	UNP O87605
A	-16	SER	-	expression tag	UNP O87605
A	-15	HIS	-	expression tag	UNP O87605
A	-14	HIS	-	expression tag	UNP O87605
A	-13	HIS	-	expression tag	UNP O87605
A	-12	HIS	-	expression tag	UNP O87605
A	-11	HIS	-	expression tag	UNP O87605
A	-10	HIS	-	expression tag	UNP O87605
A	-9	SER	-	expression tag	UNP O87605
A	-8	SER	-	expression tag	UNP O87605
A	-7	GLY	-	expression tag	UNP O87605
A	-6	LEU	-	expression tag	UNP O87605
A	-5	VAL	-	expression tag	UNP O87605
A	-4	PRO	-	expression tag	UNP O87605
A	-3	ARG	-	expression tag	UNP O87605
A	-2	GLY	-	expression tag	UNP O87605
A	-1	SER	-	expression tag	UNP O87605
A	0	HIS	-	expression tag	UNP O87605
A	238	4AF	HIS	engineered mutation	UNP O87605
A	417	LEU	-	expression tag	UNP O87605
A	418	GLU	-	expression tag	UNP O87605
A	419	HIS	-	expression tag	UNP O87605
A	420	HIS	-	expression tag	UNP O87605

Continued on next page...

Continued from previous page...

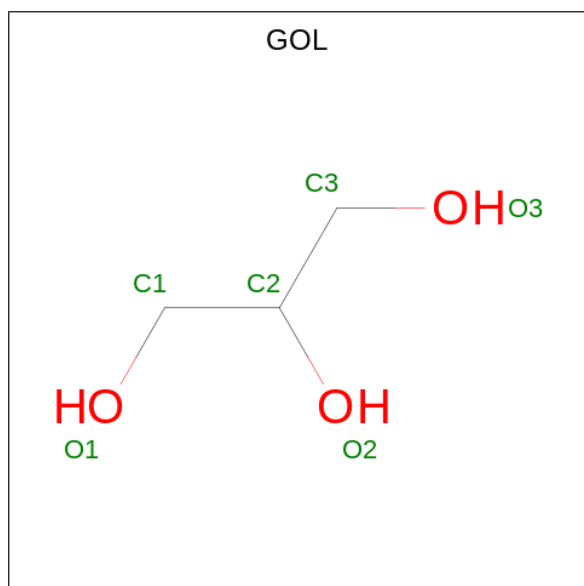
Chain	Residue	Modelled	Actual	Comment	Reference
A	421	HIS	-	expression tag	UNP O87605
A	422	HIS	-	expression tag	UNP O87605
A	423	HIS	-	expression tag	UNP O87605
A	424	HIS	-	expression tag	UNP O87605
B	-19	MET	-	initiating methionine	UNP O87605
B	-18	GLY	-	expression tag	UNP O87605
B	-17	SER	-	expression tag	UNP O87605
B	-16	SER	-	expression tag	UNP O87605
B	-15	HIS	-	expression tag	UNP O87605
B	-14	HIS	-	expression tag	UNP O87605
B	-13	HIS	-	expression tag	UNP O87605
B	-12	HIS	-	expression tag	UNP O87605
B	-11	HIS	-	expression tag	UNP O87605
B	-10	HIS	-	expression tag	UNP O87605
B	-9	SER	-	expression tag	UNP O87605
B	-8	SER	-	expression tag	UNP O87605
B	-7	GLY	-	expression tag	UNP O87605
B	-6	LEU	-	expression tag	UNP O87605
B	-5	VAL	-	expression tag	UNP O87605
B	-4	PRO	-	expression tag	UNP O87605
B	-3	ARG	-	expression tag	UNP O87605
B	-2	GLY	-	expression tag	UNP O87605
B	-1	SER	-	expression tag	UNP O87605
B	0	HIS	-	expression tag	UNP O87605
B	238	4AF	HIS	engineered mutation	UNP O87605
B	417	LEU	-	expression tag	UNP O87605
B	418	GLU	-	expression tag	UNP O87605
B	419	HIS	-	expression tag	UNP O87605
B	420	HIS	-	expression tag	UNP O87605
B	421	HIS	-	expression tag	UNP O87605
B	422	HIS	-	expression tag	UNP O87605
B	423	HIS	-	expression tag	UNP O87605
B	424	HIS	-	expression tag	UNP O87605

- Molecule 2 is PROTOPORPHYRIN IX CONTAINING FE (three-letter code: HEM) (formula: $C_{34}H_{32}FeN_4O_4$).

Continued from previous page...

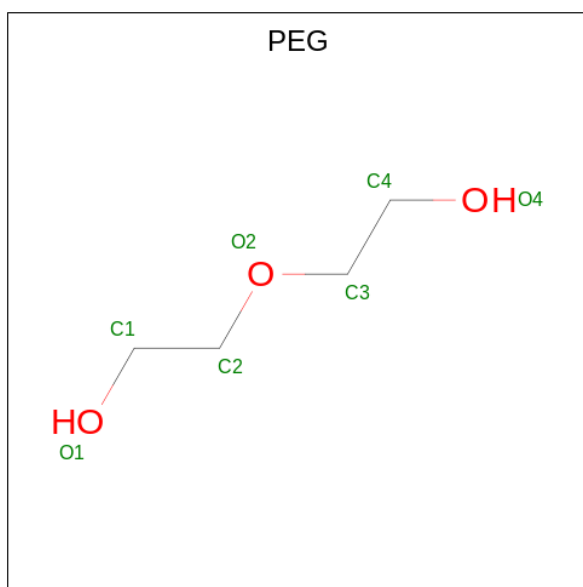
Mol	Chain	Residues	Atoms			ZeroOcc	AltConf
			Total	C	O		
3	B	1	21	17	4	0	0

- Molecule 4 is GLYCEROL (three-letter code: GOL) (formula: $C_3H_8O_3$).



Mol	Chain	Residues	Atoms			ZeroOcc	AltConf
			Total	C	O		
4	A	1	6	3	3	0	0
4	A	1	6	3	3	0	0
4	A	1	6	3	3	0	0
4	A	1	6	3	3	0	0
4	A	1	6	3	3	0	0
4	B	1	6	3	3	0	0
4	B	1	6	3	3	0	0
4	B	1	6	3	3	0	0

- Molecule 5 is DI(HYDROXYETHYL)ETHER (three-letter code: PEG) (formula: $C_4H_{10}O_3$).



Mol	Chain	Residues	Atoms	ZeroOcc	AltConf
5	A	1	Total C O 7 4 3	0	0
5	B	1	Total C O 7 4 3	0	0

- Molecule 6 is water.

Mol	Chain	Residues	Atoms	ZeroOcc	AltConf
6	A	251	Total O 251 251	0	0
6	B	229	Total O 229 229	0	0

4 Data and refinement statistics

Property	Value	Source
Space group	P 21 21 21	Depositor
Cell constants a, b, c, α , β , γ	60.12Å 108.48Å 153.15Å 90.00° 90.00° 90.00°	Depositor
Resolution (Å)	32.70 – 2.20 32.70 – 2.20	Depositor EDS
% Data completeness (in resolution range)	86.9 (32.70-2.20) 86.9 (32.70-2.20)	Depositor EDS
R_{merge}	(Not available)	Depositor
R_{sym}	(Not available)	Depositor
$\langle I/\sigma(I) \rangle$ ¹	4.71 (at 2.20Å)	Xtrriage
Refinement program	PHENIX 1.19.2_4158	Depositor
R, R_{free}	0.179 , 0.212 0.179 , 0.211	Depositor DCC
R_{free} test set	1999 reflections (4.46%)	wwPDB-VP
Wilson B-factor (Å ²)	29.6	Xtrriage
Anisotropy	0.296	Xtrriage
Bulk solvent k_{sol} (e/Å ³), B_{sol} (Å ²)	0.35 , 45.7	EDS
L-test for twinning ²	$\langle L \rangle = 0.49$, $\langle L^2 \rangle = 0.32$	Xtrriage
Estimated twinning fraction	No twinning to report.	Xtrriage
F_o, F_c correlation	0.95	EDS
Total number of atoms	6811	wwPDB-VP
Average B, all atoms (Å ²)	36.0	wwPDB-VP

Xtrriage's analysis on translational NCS is as follows: *The largest off-origin peak in the Patterson function is 10.81% of the height of the origin peak. No significant pseudotranslation is detected.*

¹Intensities estimated from amplitudes.

²Theoretical values of $\langle |L| \rangle$, $\langle L^2 \rangle$ for acentric reflections are 0.5, 0.333 respectively for untwinned datasets, and 0.375, 0.2 for perfectly twinned datasets.

5 Model quality [i](#)

5.1 Standard geometry [i](#)

Bond lengths and bond angles in the following residue types are not validated in this section: 4AF, GOL, PEG, HEM, E4H

The Z score for a bond length (or angle) is the number of standard deviations the observed value is removed from the expected value. A bond length (or angle) with $|Z| > 5$ is considered an outlier worth inspection. RMSZ is the root-mean-square of all Z scores of the bond lengths (or angles).

Mol	Chain	Bond lengths		Bond angles	
		RMSZ	# Z >5	RMSZ	# Z >5
1	A	0.25	0/3128	0.53	1/4264 (0.0%)
1	B	0.25	0/3123	0.52	0/4257
All	All	0.25	0/6251	0.53	1/8521 (0.0%)

There are no bond length outliers.

All (1) bond angle outliers are listed below:

Mol	Chain	Res	Type	Atoms	Z	Observed(°)	Ideal(°)
1	A	13	PRO	N-CA-CB	5.90	110.38	103.30

There are no chirality outliers.

There are no planarity outliers.

5.2 Too-close contacts [i](#)

In the following table, the Non-H and H(model) columns list the number of non-hydrogen atoms and hydrogen atoms in the chain respectively. The H(added) column lists the number of hydrogen atoms added and optimized by MolProbity. The Clashes column lists the number of clashes within the asymmetric unit, whereas Symm-Clashes lists symmetry-related clashes.

Mol	Chain	Non-H	H(model)	H(added)	Clashes	Symm-Clashes
1	A	3073	0	3041	28	0
1	B	3068	0	3039	30	0
2	A	43	0	30	1	0
2	B	43	0	30	1	0
3	A	21	0	26	0	0
3	B	21	0	26	0	0
4	A	30	0	40	5	0
4	B	18	0	24	5	0

Continued on next page...

Continued from previous page...

Mol	Chain	Non-H	H(model)	H(added)	Clashes	Symm-Clashes
5	A	7	0	10	0	0
5	B	7	0	10	1	0
6	A	251	0	0	2	0
6	B	229	0	0	2	0
All	All	6811	0	6276	57	0

The all-atom clashscore is defined as the number of clashes found per 1000 atoms (including hydrogen atoms). The all-atom clashscore for this structure is 5.

All (57) close contacts within the same asymmetric unit are listed below, sorted by their clash magnitude.

Atom-1	Atom-2	Interatomic distance (Å)	Clash overlap (Å)
1:A:382:VAL:CG1	1:A:386:GLU:HB2	2.21	0.70
1:B:179:VAL:HG11	1:B:246:GLU:HG3	1.73	0.70
1:A:382:VAL:HG12	1:A:386:GLU:HB2	1.74	0.68
1:A:60:ARG:NH2	4:A:508:GOL:O1	2.24	0.65
1:B:99:ARG:HD3	5:B:503:PEG:H22	1.79	0.64
1:A:273:MET:HB3	1:A:369:ARG:HH22	1.65	0.61
1:A:263:PRO:HB3	1:B:267:ALA:HB2	1.81	0.61
1:A:145:MET:HA	1:A:149:ALA:HB3	1.81	0.60
1:B:197:TYR:HE1	4:B:505:GOL:H32	1.68	0.58
1:A:219:ARG:O	1:A:223:GLU:HG2	2.05	0.57
1:A:351:ILE:HD11	4:A:506:GOL:H32	1.86	0.57
1:B:14:VAL:HG12	1:B:45:ARG:HG2	1.88	0.55
1:B:383:SER:HB3	1:B:386:GLU:HG3	1.89	0.55
1:B:175:THR:HG21	1:B:245:HIS:HD2	1.72	0.54
1:A:382:VAL:HG12	1:A:383:SER:N	2.23	0.54
1:A:382:VAL:HG21	1:A:402:PRO:HG2	1.89	0.53
1:A:259:LEU:HD21	1:A:269:LEU:HD23	1.91	0.53
1:B:238:4AF:O2	4:B:506:GOL:O3	2.25	0.52
1:B:22:GLN:HE22	1:B:389:TRP:H	1.57	0.52
1:B:16:ASP:HA	1:B:45:ARG:HG3	1.90	0.52
1:A:227:ARG:HH22	4:A:503:GOL:H2	1.75	0.52
1:A:32:TYR:HA	1:A:35:LEU:HD12	1.93	0.51
1:B:259:LEU:HD21	1:B:269:LEU:HD23	1.91	0.51
1:B:404:ARG:NH1	6:B:603:HOH:O	2.43	0.51
1:A:60:ARG:HH12	4:A:508:GOL:H2	1.76	0.50
1:B:369:ARG:NH1	1:B:373:GLU:OE2	2.43	0.50
1:B:175:THR:HG21	1:B:245:HIS:CD2	2.46	0.50
1:B:145:MET:HA	1:B:149:ALA:HB3	1.93	0.50
1:B:244:GLY:HA3	2:B:501:HEM:C2C	2.47	0.50

Continued on next page...

Continued from previous page...

Atom-1	Atom-2	Interatomic distance (Å)	Clash overlap (Å)
1:B:144:LEU:HD23	1:B:401:LEU:HD23	1.92	0.50
1:A:382:VAL:CG2	1:A:402:PRO:HG2	2.43	0.48
1:B:286:TYR:CD2	1:B:287:GLU:HG3	2.49	0.48
1:A:244:GLY:HA3	2:A:501:HEM:C2C	2.48	0.48
1:B:40:PRO:HB2	1:B:60:ARG:HG2	1.95	0.48
1:A:72:LYS:NZ	6:A:605:HOH:O	2.46	0.47
1:B:404:ARG:CD	6:B:603:HOH:O	2.63	0.47
1:A:260:LEU:HD21	1:A:378:LEU:HG	1.97	0.47
1:B:60:ARG:HA	1:B:60:ARG:HD3	1.81	0.46
1:A:270:ARG:NH1	1:A:372:LEU:O	2.45	0.45
1:B:109:ARG:HH12	4:B:504:GOL:H32	1.81	0.45
1:B:197:TYR:CE1	4:B:505:GOL:H32	2.50	0.44
1:A:171:PHE:O	1:A:175:THR:HG23	2.18	0.44
1:A:60:ARG:HD3	1:A:60:ARG:HA	1.82	0.44
1:B:14:VAL:CG1	1:B:45:ARG:HG2	2.48	0.43
1:A:273:MET:HB3	1:A:369:ARG:NH2	2.31	0.43
1:B:94:GLU:OE1	4:B:506:GOL:H12	2.19	0.42
1:B:127:VAL:O	1:B:131:VAL:HG23	2.19	0.42
1:B:382:VAL:HG11	1:B:387:LEU:HD21	2.01	0.42
1:B:88:LEU:HD21	1:B:195:SER:HB2	2.02	0.42
1:A:43:ARG:NH2	6:A:614:HOH:O	2.54	0.41
1:A:390:TYR:HA	1:A:391:PRO:HD3	1.86	0.41
1:B:22:GLN:NE2	1:B:389:TRP:H	2.17	0.41
1:A:149:ALA:O	1:A:249:VAL:HG22	2.20	0.41
1:A:382:VAL:CG1	1:A:383:SER:N	2.83	0.41
1:B:76:ASN:O	1:B:312:GLY:HA2	2.21	0.41
1:A:260:LEU:HD23	1:A:266:LEU:HD11	2.03	0.40
1:A:224:ASP:HB2	4:A:505:GOL:H12	2.03	0.40

There are no symmetry-related clashes.

5.3 Torsion angles [i](#)

5.3.1 Protein backbone [i](#)

In the following table, the Percentiles column shows the percent Ramachandran outliers of the chain as a percentile score with respect to all X-ray entries followed by that with respect to entries of similar resolution.

The Analysed column shows the number of residues for which the backbone conformation was analysed, and the total number of residues.

Mol	Chain	Analysed	Favoured	Allowed	Outliers	Percentiles	
1	A	391/444 (88%)	382 (98%)	9 (2%)	0	100	100
1	B	390/444 (88%)	383 (98%)	7 (2%)	0	100	100
All	All	781/888 (88%)	765 (98%)	16 (2%)	0	100	100

There are no Ramachandran outliers to report.

5.3.2 Protein sidechains [i](#)

In the following table, the Percentiles column shows the percent sidechain outliers of the chain as a percentile score with respect to all X-ray entries followed by that with respect to entries of similar resolution.

The Analysed column shows the number of residues for which the sidechain conformation was analysed, and the total number of residues.

Mol	Chain	Analysed	Rotameric	Outliers	Percentiles	
1	A	320/362 (88%)	314 (98%)	6 (2%)	57	71
1	B	320/362 (88%)	316 (99%)	4 (1%)	69	81
All	All	640/724 (88%)	630 (98%)	10 (2%)	62	76

All (10) residues with a non-rotameric sidechain are listed below:

Mol	Chain	Res	Type
1	A	114	ARG
1	A	172	ARG
1	A	176	ASP
1	A	184	PRO
1	A	203	ASP
1	A	316	LEU
1	B	45	ARG
1	B	141	ARG
1	B	171	PHE
1	B	396	ARG

Sometimes sidechains can be flipped to improve hydrogen bonding and reduce clashes. There are no such sidechains identified.

5.3.3 RNA [i](#)

There are no RNA molecules in this entry.

5.4 Non-standard residues in protein, DNA, RNA chains [i](#)

2 non-standard protein/DNA/RNA residues are modelled in this entry.

In the following table, the Counts columns list the number of bonds (or angles) for which Mogul statistics could be retrieved, the number of bonds (or angles) that are observed in the model and the number of bonds (or angles) that are defined in the Chemical Component Dictionary. The Link column lists molecule types, if any, to which the group is linked. The Z score for a bond length (or angle) is the number of standard deviations the observed value is removed from the expected value. A bond length (or angle) with $|Z| > 2$ is considered an outlier worth inspection. RMSZ is the root-mean-square of all Z scores of the bond lengths (or angles).

Mol	Type	Chain	Res	Link	Bond lengths			Bond angles		
					Counts	RMSZ	# Z > 2	Counts	RMSZ	# Z > 2
1	4AF	B	238	1	13,14,15	1.33	2 (15%)	15,18,20	0.80	0
1	4AF	A	238	1	13,14,15	1.36	3 (23%)	15,18,20	0.71	0

In the following table, the Chirals column lists the number of chiral outliers, the number of chiral centers analysed, the number of these observed in the model and the number defined in the Chemical Component Dictionary. Similar counts are reported in the Torsion and Rings columns. '-' means no outliers of that kind were identified.

Mol	Type	Chain	Res	Link	Chirals	Torsions	Rings
1	4AF	B	238	1	-	0/9/10/12	0/1/1/1
1	4AF	A	238	1	-	0/9/10/12	0/1/1/1

All (5) bond length outliers are listed below:

Mol	Chain	Res	Type	Atoms	Z	Observed(Å)	Ideal(Å)
1	B	238	4AF	C3-C4	2.43	1.57	1.51
1	A	238	4AF	C3-C4	2.37	1.57	1.51
1	A	238	4AF	C7-C8	2.21	1.54	1.49
1	B	238	4AF	O-C	2.04	1.28	1.19
1	A	238	4AF	O-C	2.03	1.28	1.19

There are no bond angle outliers.

There are no chirality outliers.

There are no torsion outliers.

There are no ring outliers.

1 monomer is involved in 1 short contact:

Mol	Chain	Res	Type	Clashes	Symm-Clashes
1	B	238	4AF	1	0

5.5 Carbohydrates [i](#)

There are no monosaccharides in this entry.

5.6 Ligand geometry [i](#)

14 ligands are modelled in this entry.

In the following table, the Counts columns list the number of bonds (or angles) for which Mogul statistics could be retrieved, the number of bonds (or angles) that are observed in the model and the number of bonds (or angles) that are defined in the Chemical Component Dictionary. The Link column lists molecule types, if any, to which the group is linked. The Z score for a bond length (or angle) is the number of standard deviations the observed value is removed from the expected value. A bond length (or angle) with $|Z| > 2$ is considered an outlier worth inspection. RMSZ is the root-mean-square of all Z scores of the bond lengths (or angles).

Mol	Type	Chain	Res	Link	Bond lengths			Bond angles		
					Counts	RMSZ	# Z > 2	Counts	RMSZ	# Z > 2
5	PEG	B	503	-	6,6,6	0.47	0	5,5,5	0.29	0
4	GOL	A	503	-	5,5,5	0.54	0	5,5,5	0.31	0
2	HEM	A	501	1	41,50,50	1.18	4 (9%)	45,82,82	1.42	6 (13%)
4	GOL	A	506	-	5,5,5	0.55	0	5,5,5	0.23	0
4	GOL	B	504	-	5,5,5	0.54	0	5,5,5	0.25	0
3	E4H	A	502	-	21,21,21	1.30	3 (14%)	23,29,29	2.73	4 (17%)
4	GOL	A	505	-	5,5,5	0.55	0	5,5,5	0.30	0
4	GOL	B	505	-	5,5,5	0.08	0	5,5,5	0.31	0
4	GOL	A	507	-	5,5,5	0.56	0	5,5,5	0.36	0
4	GOL	B	506	-	5,5,5	0.55	0	5,5,5	0.37	0
2	HEM	B	501	1	41,50,50	1.16	3 (7%)	45,82,82	1.40	6 (13%)
4	GOL	A	508	-	5,5,5	0.56	0	5,5,5	0.83	0
3	E4H	B	502	-	21,21,21	1.36	3 (14%)	23,29,29	2.82	3 (13%)
5	PEG	A	504	-	6,6,6	0.49	0	5,5,5	0.27	0

In the following table, the Chirals column lists the number of chiral outliers, the number of chiral centers analysed, the number of these observed in the model and the number defined in the Chemical Component Dictionary. Similar counts are reported in the Torsion and Rings columns. '-' means no outliers of that kind were identified.

Mol	Type	Chain	Res	Link	Chirals	Torsions	Rings
5	PEG	B	503	-	-	1/4/4/4	-
4	GOL	A	503	-	-	2/4/4/4	-
2	HEM	A	501	1	-	1/12/54/54	-
4	GOL	A	506	-	-	4/4/4/4	-

Continued on next page...

Continued from previous page...

Mol	Type	Chain	Res	Link	Chirals	Torsions	Rings
4	GOL	B	504	-	-	2/4/4/4	-
3	E4H	A	502	-	-	8/35/35/35	0/0/1/1
4	GOL	A	505	-	-	0/4/4/4	-
4	GOL	B	505	-	-	2/4/4/4	-
4	GOL	A	507	-	-	3/4/4/4	-
4	GOL	B	506	-	-	2/4/4/4	-
2	HEM	B	501	1	-	1/12/54/54	-
4	GOL	A	508	-	-	2/4/4/4	-
3	E4H	B	502	-	-	2/35/35/35	0/0/1/1
5	PEG	A	504	-	-	2/4/4/4	-

All (13) bond length outliers are listed below:

Mol	Chain	Res	Type	Atoms	Z	Observed(Å)	Ideal(Å)
3	B	502	E4H	OAM-CAU	-3.71	1.39	1.46
3	A	502	E4H	OAM-CAO	3.70	1.42	1.34
3	B	502	E4H	OAM-CAO	3.31	1.42	1.34
2	A	501	HEM	C4D-ND	-3.20	1.34	1.40
2	B	501	HEM	C4D-ND	-3.13	1.34	1.40
3	A	502	E4H	OAM-CAU	-3.10	1.40	1.46
2	A	501	HEM	C3C-C2C	-2.78	1.36	1.40
3	B	502	E4H	OAF-CAN	-2.73	1.18	1.22
2	B	501	HEM	C3C-C2C	-2.72	1.36	1.40
2	B	501	HEM	FE-NB	2.28	2.08	1.96
2	A	501	HEM	FE-NB	2.27	2.08	1.96
3	A	502	E4H	OAF-CAN	-2.16	1.19	1.22
2	A	501	HEM	C1B-NB	-2.02	1.36	1.40

All (19) bond angle outliers are listed below:

Mol	Chain	Res	Type	Atoms	Z	Observed(°)	Ideal(°)
3	B	502	E4H	CAP-CAJ-CAI	11.91	158.96	126.44
3	A	502	E4H	CAP-CAJ-CAI	11.45	157.71	126.44
2	B	501	HEM	C4C-CHD-C1D	4.09	127.96	122.56
2	A	501	HEM	C4C-CHD-C1D	4.09	127.95	122.56
2	A	501	HEM	C4B-CHC-C1C	3.98	127.82	122.56
2	B	501	HEM	C4B-CHC-C1C	3.88	127.68	122.56
3	B	502	E4H	OAM-CAO-CAS	3.32	118.84	111.56
3	A	502	E4H	OAM-CAO-CAS	3.31	118.83	111.56
2	A	501	HEM	CBD-CAD-C3D	-3.12	103.95	112.63

Continued on next page...

Continued from previous page...

Mol	Chain	Res	Type	Atoms	Z	Observed(°)	Ideal(°)
2	B	501	HEM	C4D-ND-C1D	2.81	107.98	105.07
2	B	501	HEM	CBD-CAD-C3D	-2.66	105.25	112.63
2	A	501	HEM	C4D-ND-C1D	2.64	107.80	105.07
2	B	501	HEM	CMC-C2C-C3C	2.36	129.09	124.68
2	B	501	HEM	CMA-C3A-C4A	-2.33	124.88	128.46
2	A	501	HEM	CMC-C2C-C3C	2.28	128.95	124.68
3	B	502	E4H	CAS-CAT-CAR	-2.26	110.97	114.73
2	A	501	HEM	CMA-C3A-C4A	-2.26	124.99	128.46
3	A	502	E4H	CAE-CAS-CAT	-2.06	108.94	112.37
3	A	502	E4H	CAS-CAT-CAR	-2.00	111.40	114.73

There are no chirality outliers.

All (32) torsion outliers are listed below:

Mol	Chain	Res	Type	Atoms
3	A	502	E4H	CAJ-CAP-CAU-OAM
3	B	502	E4H	CAJ-CAI-CAN-CAQ
3	B	502	E4H	CAJ-CAI-CAN-OAF
4	A	506	GOL	O1-C1-C2-C3
4	A	506	GOL	C1-C2-C3-O3
4	A	506	GOL	O2-C2-C3-O3
4	A	507	GOL	O1-C1-C2-O2
4	A	508	GOL	O1-C1-C2-O2
4	A	508	GOL	O1-C1-C2-C3
5	A	504	PEG	O2-C3-C4-O4
3	A	502	E4H	CAI-CAJ-CAP-CAB
4	B	506	GOL	O1-C1-C2-O2
4	A	503	GOL	C1-C2-C3-O3
4	A	507	GOL	O1-C1-C2-C3
4	B	504	GOL	O1-C1-C2-C3
4	B	505	GOL	O1-C1-C2-C3
4	B	506	GOL	O1-C1-C2-C3
4	A	506	GOL	O1-C1-C2-O2
4	B	504	GOL	O1-C1-C2-O2
3	A	502	E4H	CAJ-CAI-CAN-OAF
3	A	502	E4H	CAJ-CAI-CAN-CAQ
5	A	504	PEG	O1-C1-C2-O2
4	A	503	GOL	O2-C2-C3-O3
3	A	502	E4H	CAB-CAP-CAU-CAK
3	A	502	E4H	CAJ-CAP-CAU-CAK
3	A	502	E4H	CAB-CAP-CAU-OAM
4	B	505	GOL	O1-C1-C2-O2

Continued on next page...

Continued from previous page...

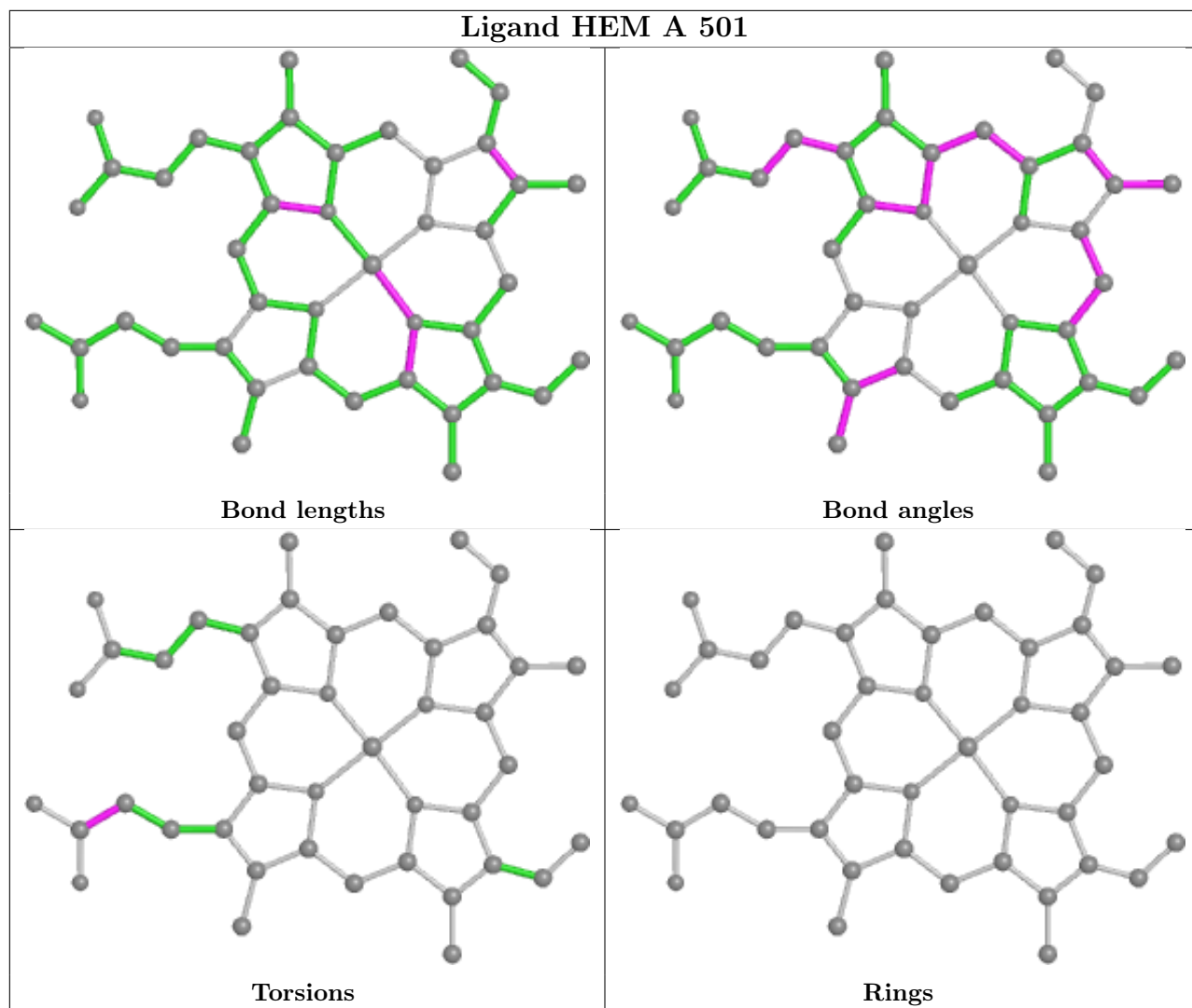
Mol	Chain	Res	Type	Atoms
2	B	501	HEM	CAA-CBA-CGA-O2A
5	B	503	PEG	C1-C2-O2-C3
2	A	501	HEM	CAA-CBA-CGA-O2A
4	A	507	GOL	C1-C2-C3-O3
3	A	502	E4H	CAA-CAK-CAU-CAP

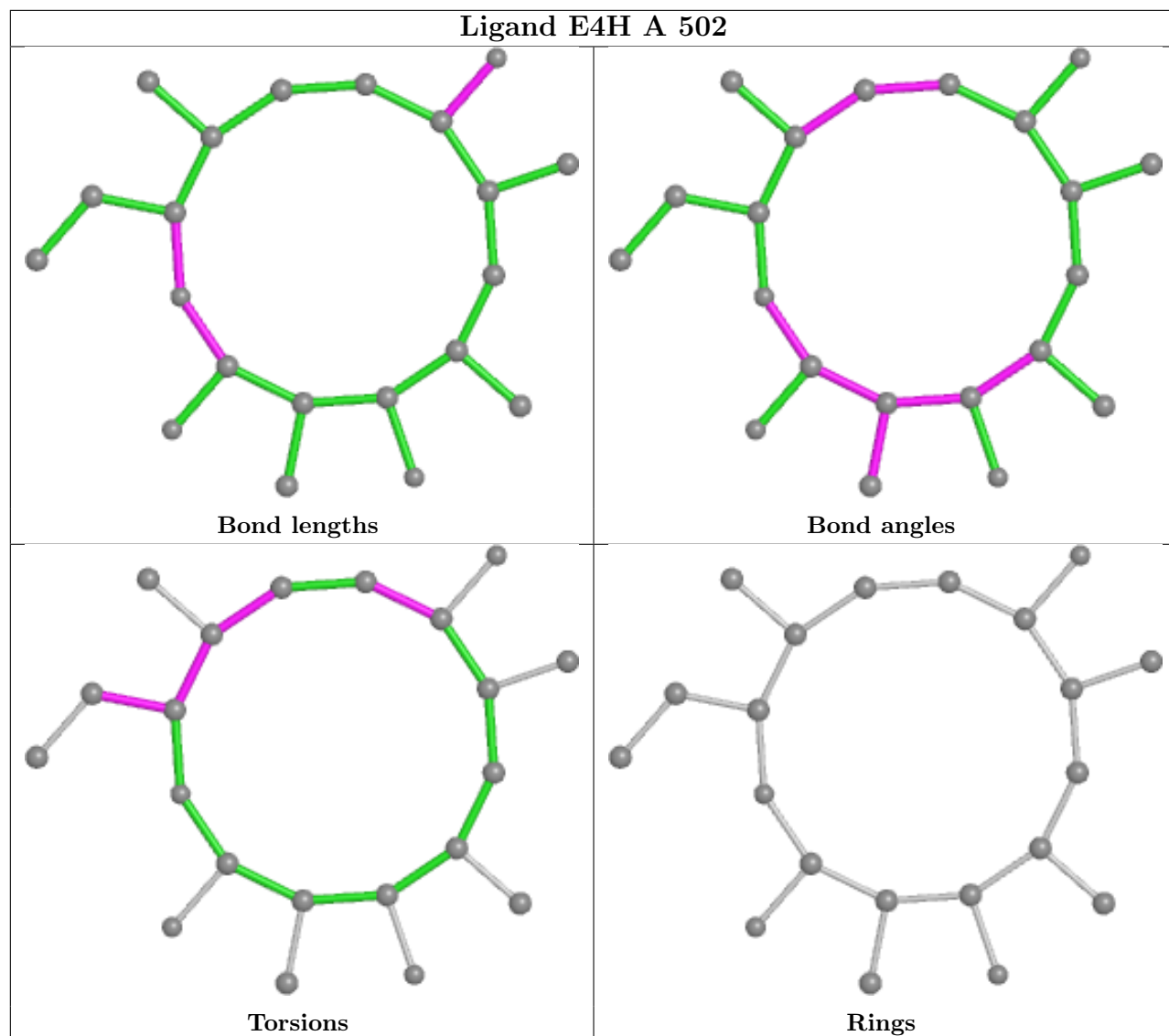
There are no ring outliers.

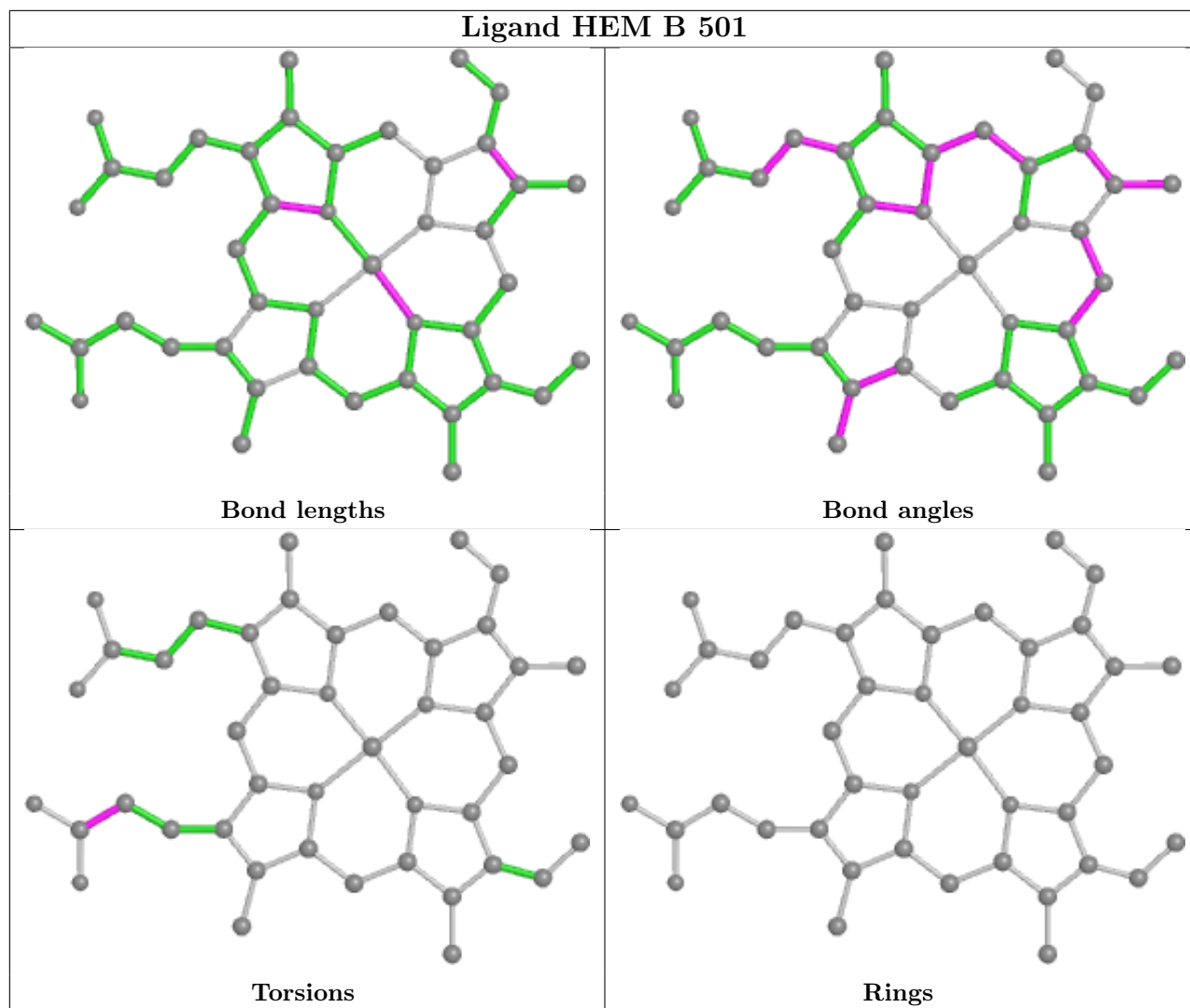
10 monomers are involved in 13 short contacts:

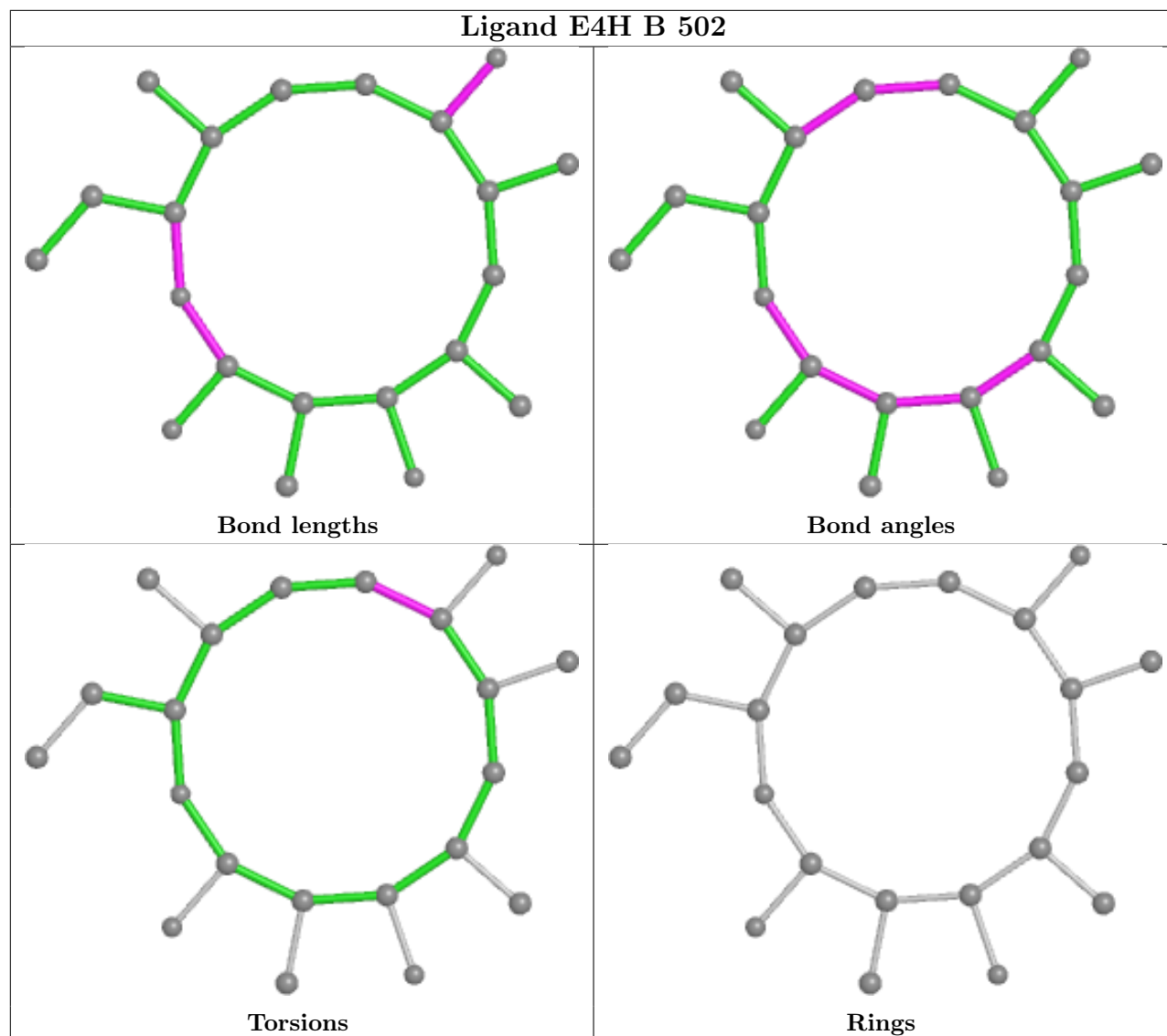
Mol	Chain	Res	Type	Clashes	Symm-Clashes
5	B	503	PEG	1	0
4	A	503	GOL	1	0
2	A	501	HEM	1	0
4	A	506	GOL	1	0
4	B	504	GOL	1	0
4	A	505	GOL	1	0
4	B	505	GOL	2	0
4	B	506	GOL	2	0
2	B	501	HEM	1	0
4	A	508	GOL	2	0

The following is a two-dimensional graphical depiction of Mogul quality analysis of bond lengths, bond angles, torsion angles, and ring geometry for all instances of the Ligand of Interest. In addition, ligands with molecular weight > 250 and outliers as shown on the validation Tables will also be included. For torsion angles, if less than 5% of the Mogul distribution of torsion angles is within 10 degrees of the torsion angle in question, then that torsion angle is considered an outlier. Any bond that is central to one or more torsion angles identified as an outlier by Mogul will be highlighted in the graph. For rings, the root-mean-square deviation (RMSD) between the ring in question and similar rings identified by Mogul is calculated over all ring torsion angles. If the average RMSD is greater than 60 degrees and the minimal RMSD between the ring in question and any Mogul-identified rings is also greater than 60 degrees, then that ring is considered an outlier. The outliers are highlighted in purple. The color gray indicates Mogul did not find sufficient equivalents in the CSD to analyse the geometry.









5.7 Other polymers [i](#)

There are no such residues in this entry.

5.8 Polymer linkage issues [i](#)

There are no chain breaks in this entry.

6 Fit of model and data

6.1 Protein, DNA and RNA chains

In the following table, the column labelled ‘#RSRZ > 2’ contains the number (and percentage) of RSRZ outliers, followed by percent RSRZ outliers for the chain as percentile scores relative to all X-ray entries and entries of similar resolution. The OWAB column contains the minimum, median, 95th percentile and maximum values of the occupancy-weighted average B-factor per residue. The column labelled ‘Q < 0.9’ lists the number of (and percentage) of residues with an average occupancy less than 0.9.

Mol	Chain	Analysed	<RSRZ>	#RSRZ>2	OWAB(Å ²)	Q<0.9
1	A	393/444 (88%)	-0.23	12 (3%) 49 47	20, 33, 58, 67	0
1	B	392/444 (88%)	-0.20	13 (3%) 46 44	20, 32, 60, 74	0
All	All	785/888 (88%)	-0.22	25 (3%) 47 45	20, 33, 59, 74	0

All (25) RSRZ outliers are listed below:

Mol	Chain	Res	Type	RSRZ
1	A	13	PRO	3.9
1	B	138	PRO	3.4
1	A	19	ALA	3.1
1	A	182	ASP	2.8
1	B	14	VAL	2.7
1	A	21	GLY	2.7
1	B	150	TRP	2.7
1	A	290	VAL	2.6
1	B	15	LEU	2.6
1	B	182	ASP	2.6
1	B	19	ALA	2.6
1	B	290	VAL	2.5
1	B	136	ALA	2.4
1	B	45	ARG	2.4
1	A	138	PRO	2.3
1	B	21	GLY	2.3
1	A	243	ALA	2.3
1	B	247	THR	2.3
1	B	22	GLN	2.3
1	A	184	PRO	2.3
1	B	376	PRO	2.2
1	A	93	LEU	2.2
1	A	18	GLY	2.2
1	A	150	TRP	2.1

Continued on next page...

Continued from previous page...

Mol	Chain	Res	Type	RSRZ
1	A	180	PHE	2.1

6.2 Non-standard residues in protein, DNA, RNA chains [i](#)

In the following table, the Atoms column lists the number of modelled atoms in the group and the number defined in the chemical component dictionary. The B-factors column lists the minimum, median, 95th percentile and maximum values of B factors of atoms in the group. The column labelled 'Q< 0.9' lists the number of atoms with occupancy less than 0.9.

Mol	Type	Chain	Res	Atoms	RSCC	RSR	B-factors(Å ²)	Q<0.9
1	4AF	A	238	14/15	0.96	0.17	21,25,37,38	0
1	4AF	B	238	14/15	0.98	0.14	22,25,37,40	0

6.3 Carbohydrates [i](#)

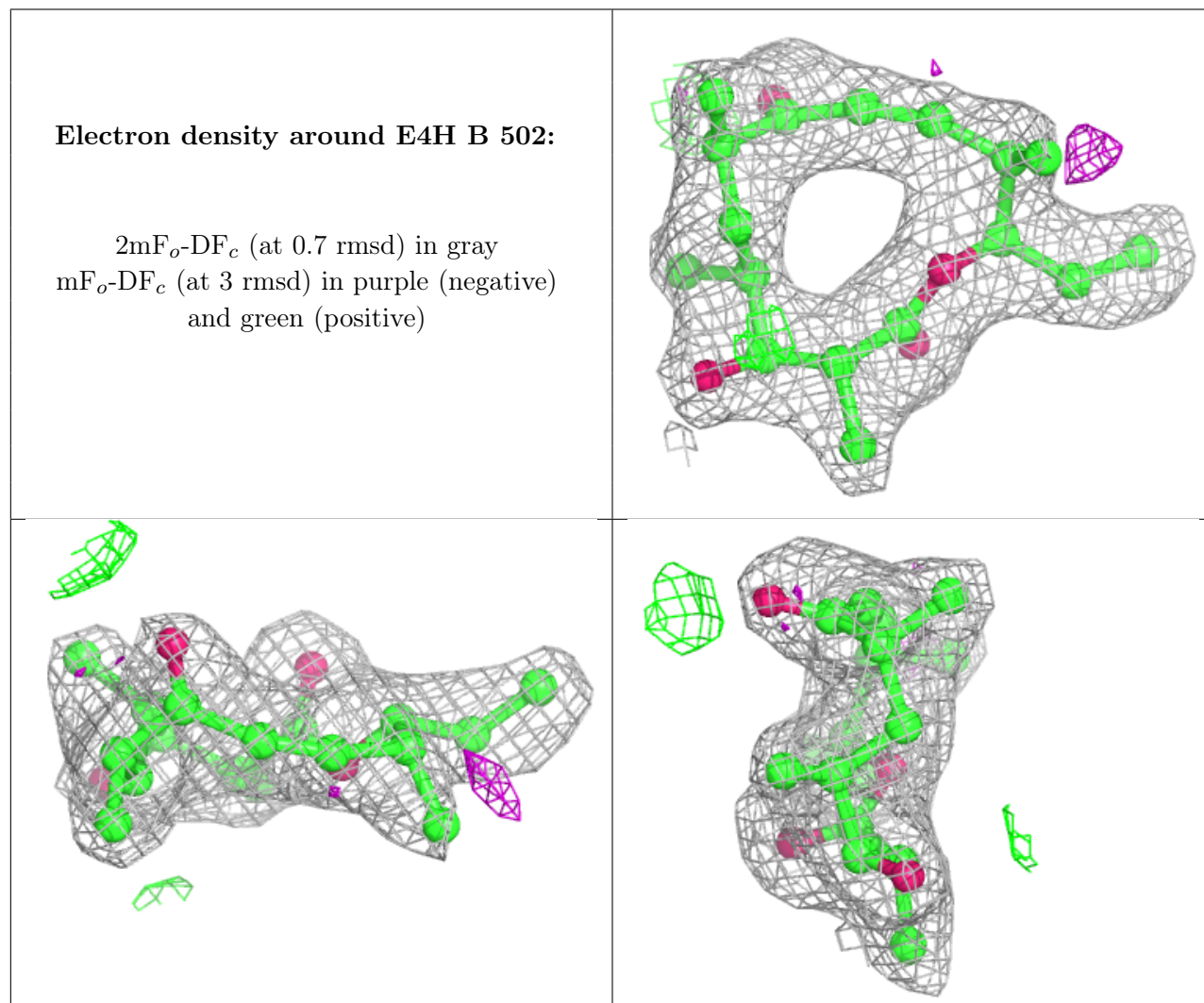
There are no monosaccharides in this entry.

6.4 Ligands [i](#)

In the following table, the Atoms column lists the number of modelled atoms in the group and the number defined in the chemical component dictionary. The B-factors column lists the minimum, median, 95th percentile and maximum values of B factors of atoms in the group. The column labelled 'Q< 0.9' lists the number of atoms with occupancy less than 0.9.

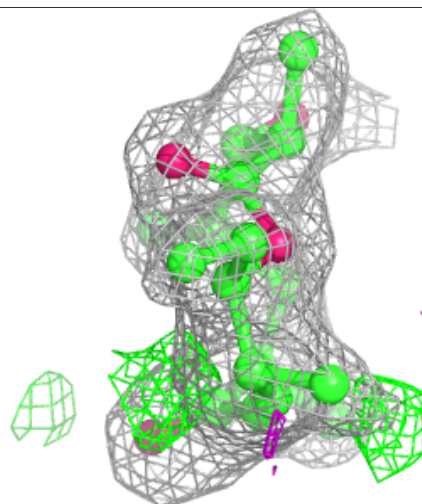
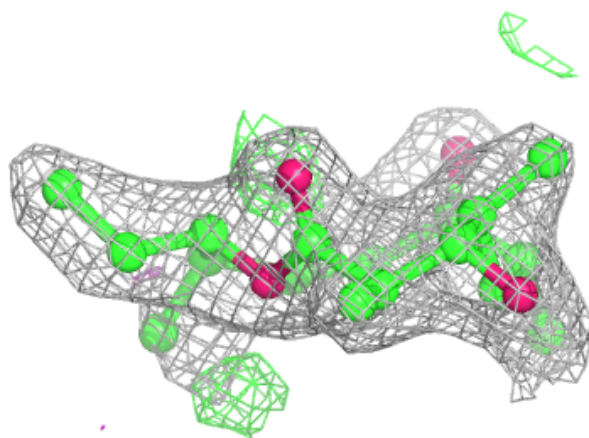
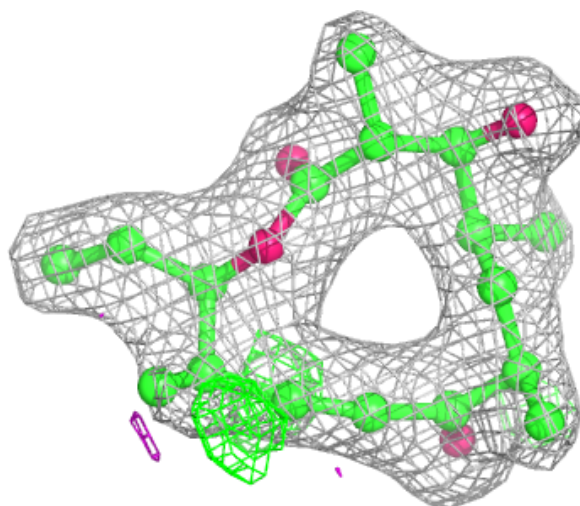
Mol	Type	Chain	Res	Atoms	RSCC	RSR	B-factors(Å ²)	Q<0.9
4	GOL	B	505	6/6	0.78	0.23	45,54,64,68	0
4	GOL	A	506	6/6	0.81	0.26	37,39,45,56	0
4	GOL	A	508	6/6	0.85	0.37	61,66,72,74	0
4	GOL	A	503	6/6	0.87	0.17	38,48,48,59	0
4	GOL	A	507	6/6	0.87	0.20	44,50,53,58	0
4	GOL	B	506	6/6	0.88	0.18	41,45,58,64	0
5	PEG	A	504	7/7	0.88	0.10	36,38,44,48	0
4	GOL	B	504	6/6	0.89	0.20	34,45,55,58	0
4	GOL	A	505	6/6	0.92	0.11	34,36,42,46	0
5	PEG	B	503	7/7	0.92	0.14	36,41,46,47	0
3	E4H	B	502	21/21	0.93	0.27	26,34,40,44	0
3	E4H	A	502	21/21	0.94	0.28	24,35,38,44	0
2	HEM	A	501	43/43	0.98	0.18	17,22,29,33	0
2	HEM	B	501	43/43	0.98	0.21	17,23,26,33	0

The following is a graphical depiction of the model fit to experimental electron density of all instances of the Ligand of Interest. In addition, ligands with molecular weight > 250 and outliers as shown on the geometry validation Tables will also be included. Each fit is shown from different orientation to approximate a three-dimensional view.



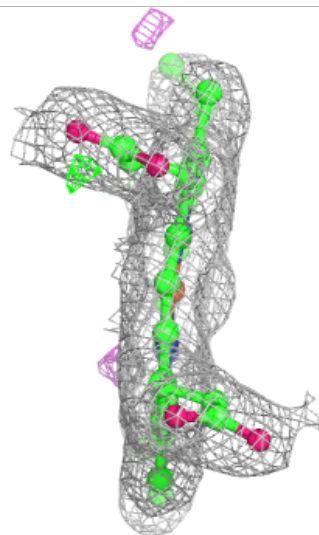
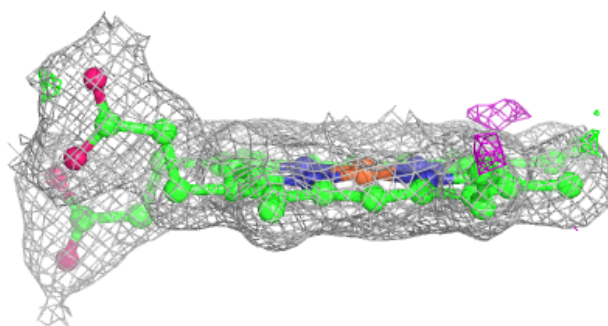
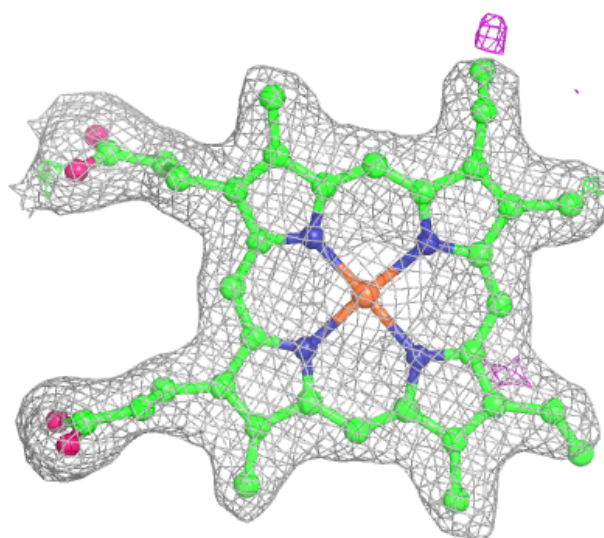
Electron density around E4H A 502:

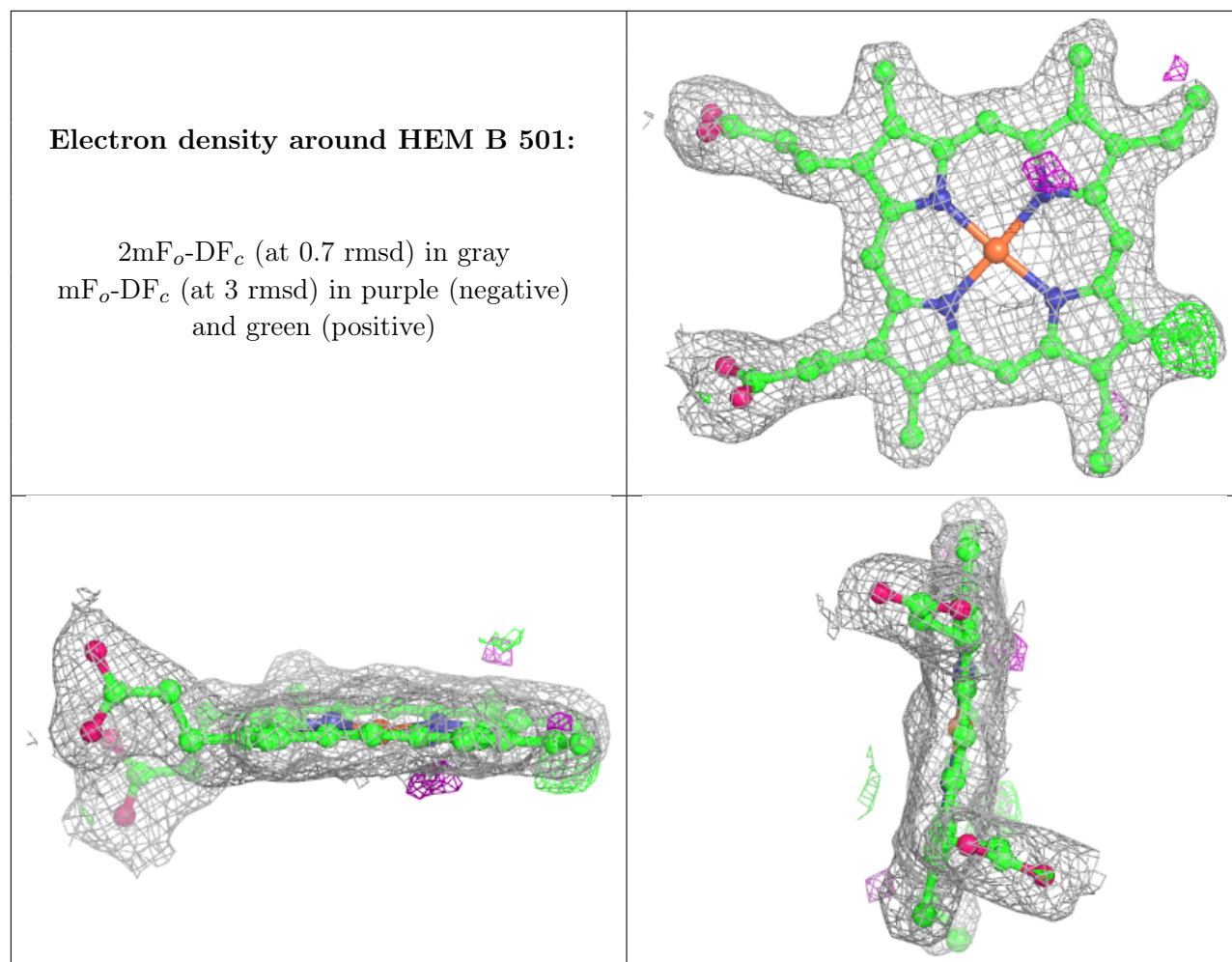
$2mF_o-DF_c$ (at 0.7 rmsd) in gray
 mF_o-DF_c (at 3 rmsd) in purple (negative)
and green (positive)



Electron density around HEM A 501:

$2mF_o-DF_c$ (at 0.7 rmsd) in gray
 mF_o-DF_c (at 3 rmsd) in purple (negative)
and green (positive)





6.5 Other polymers [i](#)

There are no such residues in this entry.