



# wwPDB X-ray Structure Validation Summary Report

Feb 4, 2024 – 07:42 PM EST

PDB ID : 1XAJ  
Title : CRYSTAL STRUCTURE OF STAPHYLOCOCCUS AUREUS 3-DEHYDROQUINATE SYNTHASE (DHQS) IN COMPLEX WITH ZN<sup>2+</sup>, NAD<sup>+</sup> AND CARBAPHOSPHONATE  
Authors : Nichols, C.E.; Ren, J.; Leslie, K.; Dhaliwal, B.; Lockyer, M.; Charles, I.; Hawkins, A.R.; Stammers, D.K.  
Deposited on : 2004-08-25  
Resolution : 2.35 Å(reported)

This is a wwPDB X-ray Structure Validation Summary Report for a publicly released PDB entry.

We welcome your comments at [validation@mail.wwpdb.org](mailto:validation@mail.wwpdb.org)

A user guide is available at

<https://www.wwpdb.org/validation/2017/XrayValidationReportHelp>

with specific help available everywhere you see the  symbol.

The types of validation reports are described at

<http://www.wwpdb.org/validation/2017/FAQs#types>.

---

The following versions of software and data (see [references](#) ①) were used in the production of this report:

MolProbity : 4.02b-467  
Mogul : 1.8.5 (274361), CSD as541be (2020)  
Xtrriage (Phenix) : 1.13  
EDS : 2.36  
buster-report : 1.1.7 (2018)  
Percentile statistics : 20191225.v01 (using entries in the PDB archive December 25th 2019)  
Refmac : 5.8.0158  
CCP4 : 7.0.044 (Gargrove)  
Ideal geometry (proteins) : Engh & Huber (2001)  
Ideal geometry (DNA, RNA) : Parkinson et al. (1996)  
Validation Pipeline (wwPDB-VP) : 2.36

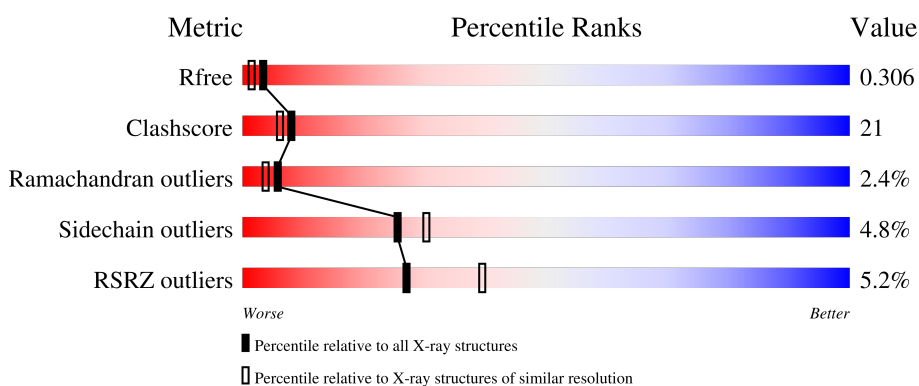
# 1 Overall quality at a glance

The following experimental techniques were used to determine the structure:

*X-RAY DIFFRACTION*

The reported resolution of this entry is 2.35 Å.

Percentile scores (ranging between 0-100) for global validation metrics of the entry are shown in the following graphic. The table shows the number of entries on which the scores are based.



Metric	Whole archive (#Entries)	Similar resolution (#Entries, resolution range(Å))
$R_{free}$	130704	1164 (2.36-2.36)
Clashscore	141614	1232 (2.36-2.36)
Ramachandran outliers	138981	1211 (2.36-2.36)
Sidechain outliers	138945	1212 (2.36-2.36)
RSRZ outliers	127900	1150 (2.36-2.36)

The table below summarises the geometric issues observed across the polymeric chains and their fit to the electron density. The red, orange, yellow and green segments of the lower bar indicate the fraction of residues that contain outliers for  $\geq 3$ , 2, 1 and 0 types of geometric quality criteria respectively. A grey segment represents the fraction of residues that are not modelled. The numeric value for each fraction is indicated below the corresponding segment, with a dot representing fractions  $\leq 5\%$ . The upper red bar (where present) indicates the fraction of residues that have poor fit to the electron density. The numeric value is given above the bar.

Mol	Chain	Length	Quality of chain
1	A	354	 5% 53% 38% • 5%
1	B	354	 5% 51% 40% • 5%

## 2 Entry composition [i](#)

There are 5 unique types of molecules in this entry. The entry contains 5760 atoms, of which 0 are hydrogens and 0 are deuteriums.

In the tables below, the ZeroOcc column contains the number of atoms modelled with zero occupancy, the AltConf column contains the number of residues with at least one atom in alternate conformation and the Trace column contains the number of residues modelled with at most 2 atoms.

- Molecule 1 is a protein called 3-dehydroquinate synthase.

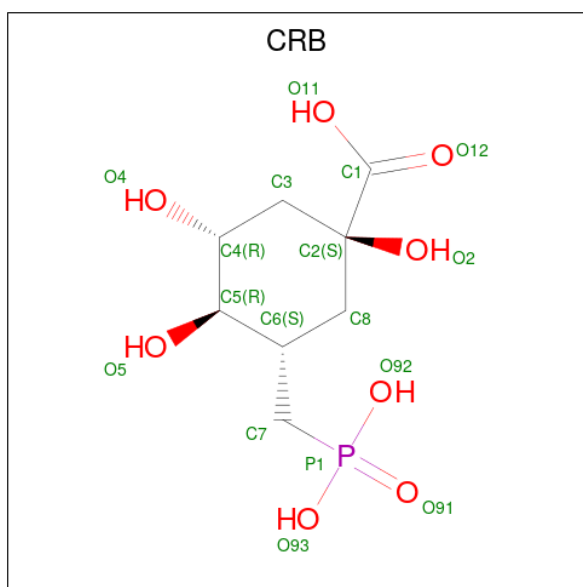
Mol	Chain	Residues	Atoms					ZeroOcc	AltConf	Trace
			Total	C	N	O	S			
1	A	337	2701	1746	450	497	8	0	0	0
1	B	337	2701	1746	450	497	8	0	0	0

There are 26 discrepancies between the modelled and reference sequences:

Chain	Residue	Modelled	Actual	Comment	Reference
A	22	LYS	ASP	see remark 999	UNP Q6GGU4
A	23	TYR	HIS	see remark 999	UNP Q6GGU4
A	25	GLY	SER	see remark 999	UNP Q6GGU4
A	28	LEU	ILE	see remark 999	UNP Q6GGU4
A	29	ASN	ASP	see remark 999	UNP Q6GGU4
A	36	LEU	ILE	see remark 999	UNP Q6GGU4
A	41	TYR	HIS	see remark 999	UNP Q6GGU4
A	48	ASN	ASP	see remark 999	UNP Q6GGU4
A	109	VAL	ILE	see remark 999	UNP Q6GGU4
A	170	LYS	GLU	see remark 999	UNP Q6GGU4
A	226	VAL	ILE	see remark 999	UNP Q6GGU4
A	282	SER	ASN	see remark 999	UNP Q6GGU4
A	326	MET	ILE	see remark 999	UNP Q6GGU4
B	22	LYS	ASP	see remark 999	UNP Q6GGU4
B	23	TYR	HIS	see remark 999	UNP Q6GGU4
B	25	GLY	SER	see remark 999	UNP Q6GGU4
B	28	LEU	ILE	see remark 999	UNP Q6GGU4
B	29	ASN	ASP	see remark 999	UNP Q6GGU4
B	36	LEU	ILE	see remark 999	UNP Q6GGU4
B	41	TYR	HIS	see remark 999	UNP Q6GGU4
B	48	ASN	ASP	see remark 999	UNP Q6GGU4
B	109	VAL	ILE	see remark 999	UNP Q6GGU4
B	170	LYS	GLU	see remark 999	UNP Q6GGU4
B	226	VAL	ILE	see remark 999	UNP Q6GGU4
B	282	SER	ASN	see remark 999	UNP Q6GGU4

*Continued on next page...*



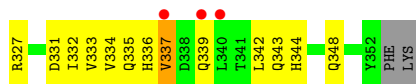


Mol	Chain	Residues	Atoms				ZeroOcc	AltConf
4	A	1	Total	C	O	P	0	0
			17	8	8	1		
4	B	1	Total	C	O	P	0	0
			17	8	8	1		

- Molecule 5 is water.

Mol	Chain	Residues	Atoms		ZeroOcc	AltConf
5	A	131	Total	O	0	0
			131	131		
5	B	103	Total	O	0	0
			103	103		







## 4 Data and refinement statistics i

Property	Value	Source
Space group	P 43	Depositor
Cell constants a, b, c, $\alpha$ , $\beta$ , $\gamma$	54.74Å 54.74Å 231.16Å 90.00° 90.00° 90.00°	Depositor
Resolution (Å)	25.55 – 2.35 25.55 – 2.35	Depositor EDS
% Data completeness (in resolution range)	97.4 (25.55-2.35) 97.5 (25.55-2.35)	Depositor EDS
$R_{merge}$	0.05	Depositor
$R_{sym}$	(Not available)	Depositor
$\langle I/\sigma(I) \rangle$ <sup>1</sup>	3.58 (at 2.36Å)	Xtrriage
Refinement program	CNS	Depositor
R, $R_{free}$	0.219 , 0.311 0.217 , 0.306	Depositor DCC
$R_{free}$ test set	2739 reflections (9.99%)	wwPDB-VP
Wilson B-factor (Å <sup>2</sup> )	43.8	Xtrriage
Anisotropy	0.488	Xtrriage
Bulk solvent $k_{sol}$ (e/Å <sup>3</sup> ), $B_{sol}$ (Å <sup>2</sup> )	0.30 , 61.0	EDS
L-test for twinning <sup>2</sup>	$\langle  L  \rangle = 0.52$ , $\langle L^2 \rangle = 0.35$	Xtrriage
Estimated twinning fraction	0.470 for h,-k,-l	Xtrriage
$F_o, F_c$ correlation	0.94	EDS
Total number of atoms	5760	wwPDB-VP
Average B, all atoms (Å <sup>2</sup> )	58.0	wwPDB-VP

Xtrriage's analysis on translational NCS is as follows: *The largest off-origin peak in the Patterson function is 5.94% of the height of the origin peak. No significant pseudotranslation is detected.*

<sup>1</sup>Intensities estimated from amplitudes.

<sup>2</sup>Theoretical values of  $\langle |L| \rangle$ ,  $\langle L^2 \rangle$  for acentric reflections are 0.5, 0.333 respectively for untwinned datasets, and 0.375, 0.2 for perfectly twinned datasets.

## 5 Model quality

### 5.1 Standard geometry

Bond lengths and bond angles in the following residue types are not validated in this section: NAD, ZN, CRB

The Z score for a bond length (or angle) is the number of standard deviations the observed value is removed from the expected value. A bond length (or angle) with  $|Z| > 5$  is considered an outlier worth inspection. RMSZ is the root-mean-square of all Z scores of the bond lengths (or angles).

Mol	Chain	Bond lengths		Bond angles	
		RMSZ	# Z  >5	RMSZ	# Z  >5
1	A	0.35	0/2762	0.61	0/3735
1	B	0.34	0/2762	0.60	0/3735
All	All	0.35	0/5524	0.61	0/7470

There are no bond length outliers.

There are no bond angle outliers.

There are no chirality outliers.

There are no planarity outliers.

### 5.2 Too-close contacts

In the following table, the Non-H and H(model) columns list the number of non-hydrogen atoms and hydrogen atoms in the chain respectively. The H(added) column lists the number of hydrogen atoms added and optimized by MolProbity. The Clashes column lists the number of clashes within the asymmetric unit, whereas Symm-Clashes lists symmetry-related clashes.

Mol	Chain	Non-H	H(model)	H(added)	Clashes	Symm-Clashes
1	A	2701	0	2677	117	0
1	B	2701	0	2677	119	0
2	A	1	0	0	0	0
2	B	1	0	0	0	0
3	A	44	0	26	3	0
3	B	44	0	26	2	0
4	A	17	0	12	0	0
4	B	17	0	12	1	0
5	A	131	0	0	5	0
5	B	103	0	0	8	0
All	All	5760	0	5430	234	0

The all-atom clashscore is defined as the number of clashes found per 1000 atoms (including hydrogen atoms). The all-atom clashscore for this structure is 21.

The worst 5 of 234 close contacts within the same asymmetric unit are listed below, sorted by their clash magnitude.

Atom-1	Atom-2	Interatomic distance (Å)	Clash overlap (Å)
1:A:272:ASN:HD21	1:A:279:HIS:HB2	1.13	1.08
1:B:272:ASN:HD21	1:B:279:HIS:HB2	1.21	0.99
1:B:250:TYR:HD2	1:B:309:TYR:HH	0.99	0.97
1:A:294:PRO:O	1:A:296:ASP:N	2.00	0.94
1:A:94:ILE:HG13	1:A:110:ALA:HB2	1.52	0.92

There are no symmetry-related clashes.

## 5.3 Torsion angles [i](#)

### 5.3.1 Protein backbone [i](#)

In the following table, the Percentiles column shows the percent Ramachandran outliers of the chain as a percentile score with respect to all X-ray entries followed by that with respect to entries of similar resolution.

The Analysed column shows the number of residues for which the backbone conformation was analysed, and the total number of residues.

Mol	Chain	Analysed	Favoured	Allowed	Outliers	Percentiles	
1	A	331/354 (94%)	276 (83%)	48 (14%)	7 (2%)	7	4
1	B	331/354 (94%)	278 (84%)	44 (13%)	9 (3%)	5	2
All	All	662/708 (94%)	554 (84%)	92 (14%)	16 (2%)	6	4

5 of 16 Ramachandran outliers are listed below:

Mol	Chain	Res	Type
1	A	251	TYR
1	A	295	LEU
1	A	312	SER
1	B	295	LEU
1	B	312	SER

### 5.3.2 Protein sidechains [i](#)

In the following table, the Percentiles column shows the percent sidechain outliers of the chain as a percentile score with respect to all X-ray entries followed by that with respect to entries of similar resolution.

The Analysed column shows the number of residues for which the sidechain conformation was analysed, and the total number of residues.

Mol	Chain	Analysed	Rotameric	Outliers	Percentiles	
1	A	289/306 (94%)	276 (96%)	13 (4%)	27	33
1	B	289/306 (94%)	274 (95%)	15 (5%)	23	27
All	All	578/612 (94%)	550 (95%)	28 (5%)	25	30

5 of 28 residues with a non-rotameric sidechain are listed below:

Mol	Chain	Res	Type
1	B	85	SER
1	B	321	VAL
1	B	185	LEU
1	B	297	MET
1	B	159	TYR

Sometimes sidechains can be flipped to improve hydrogen bonding and reduce clashes. 5 of 20 such sidechains are listed below:

Mol	Chain	Res	Type
1	B	77	GLN
1	B	205	GLN
1	B	344	HIS
1	B	232	GLN
1	A	205	GLN

### 5.3.3 RNA [i](#)

There are no RNA molecules in this entry.

## 5.4 Non-standard residues in protein, DNA, RNA chains [i](#)

There are no non-standard protein/DNA/RNA residues in this entry.

## 5.5 Carbohydrates [i](#)

There are no monosaccharides in this entry.

## 5.6 Ligand geometry [i](#)

Of 6 ligands modelled in this entry, 2 are monoatomic - leaving 4 for Mogul analysis.

In the following table, the Counts columns list the number of bonds (or angles) for which Mogul statistics could be retrieved, the number of bonds (or angles) that are observed in the model and the number of bonds (or angles) that are defined in the Chemical Component Dictionary. The Link column lists molecule types, if any, to which the group is linked. The Z score for a bond length (or angle) is the number of standard deviations the observed value is removed from the expected value. A bond length (or angle) with  $|Z| > 2$  is considered an outlier worth inspection. RMSZ is the root-mean-square of all Z scores of the bond lengths (or angles).

Mol	Type	Chain	Res	Link	Bond lengths			Bond angles		
					Counts	RMSZ	# Z  > 2	Counts	RMSZ	# Z  > 2
4	CRB	A	500	2	16,17,17	1.93	4 (25%)	22,27,27	1.47	5 (22%)
4	CRB	B	501	2	16,17,17	1.95	4 (25%)	22,27,27	1.47	4 (18%)
3	NAD	A	400	-	42,48,48	1.83	10 (23%)	50,73,73	1.67	8 (16%)
3	NAD	B	401	-	42,48,48	1.96	10 (23%)	50,73,73	1.66	8 (16%)

In the following table, the Chirals column lists the number of chiral outliers, the number of chiral centers analysed, the number of these observed in the model and the number defined in the Chemical Component Dictionary. Similar counts are reported in the Torsion and Rings columns. '-' means no outliers of that kind were identified.

Mol	Type	Chain	Res	Link	Chirals	Torsions	Rings
4	CRB	A	500	2	-	0/11/29/29	0/1/1/1
4	CRB	B	501	2	-	0/11/29/29	0/1/1/1
3	NAD	A	400	-	-	7/26/62/62	0/5/5/5
3	NAD	B	401	-	-	6/26/62/62	0/5/5/5

The worst 5 of 28 bond length outliers are listed below:

Mol	Chain	Res	Type	Atoms	Z	Observed(Å)	Ideal(Å)
3	B	401	NAD	O4D-C1D	4.73	1.47	1.41
3	B	401	NAD	C4A-N3A	4.32	1.41	1.35
3	B	401	NAD	C3N-C7N	4.25	1.57	1.50
3	A	400	NAD	O4D-C1D	4.10	1.46	1.41
3	B	401	NAD	O4B-C1B	4.09	1.46	1.41

The worst 5 of 25 bond angle outliers are listed below:

Mol	Chain	Res	Type	Atoms	Z	Observed(°)	Ideal(°)
3	A	400	NAD	C5N-C4N-C3N	-5.95	113.30	120.34
3	B	401	NAD	C5N-C4N-C3N	-5.92	113.34	120.34
3	A	400	NAD	C6N-C5N-C4N	4.94	126.61	119.44
3	B	401	NAD	C6N-C5N-C4N	4.67	126.23	119.44
3	B	401	NAD	C5N-C6N-N1N	-3.85	114.88	120.40

There are no chirality outliers.

5 of 13 torsion outliers are listed below:

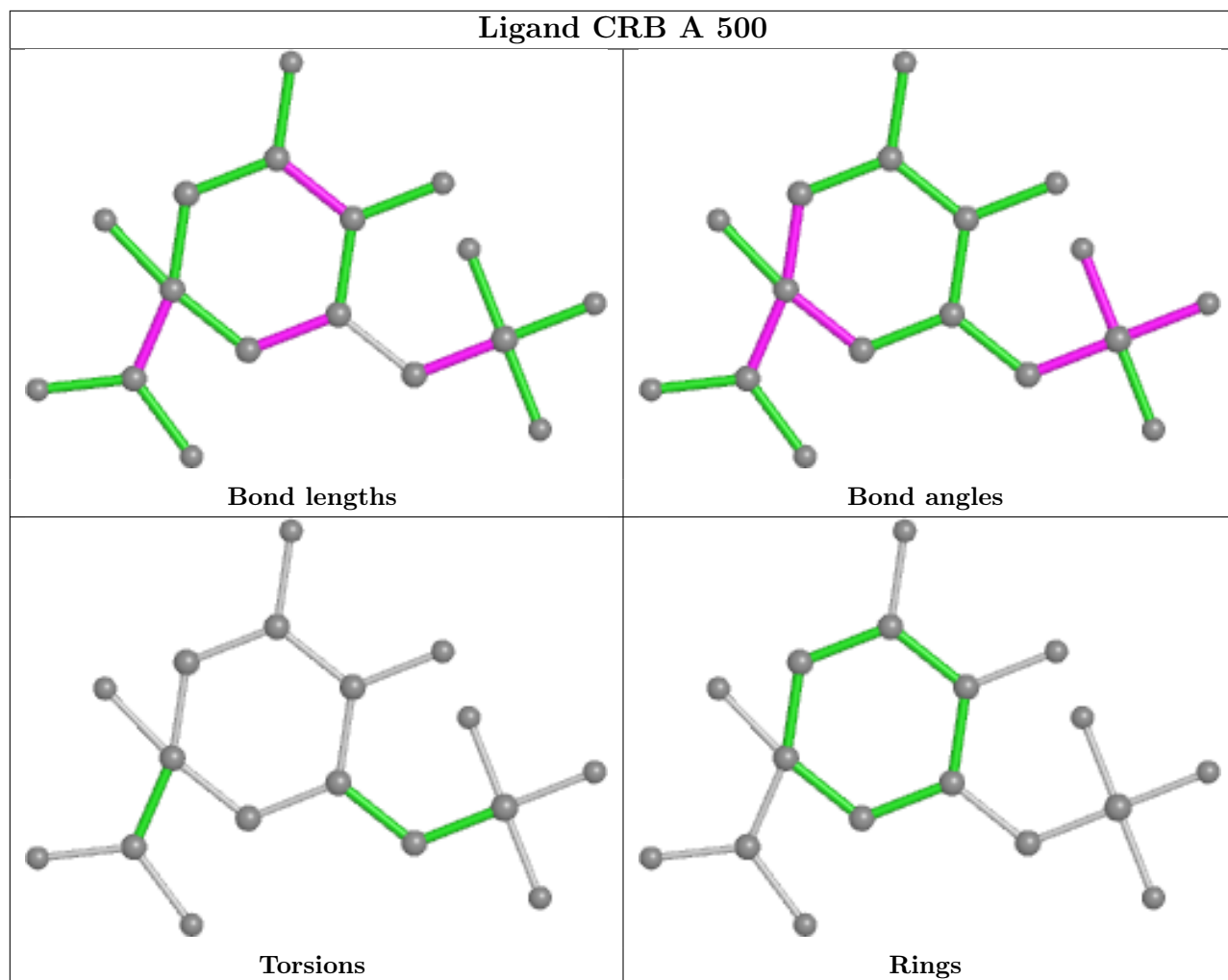
Mol	Chain	Res	Type	Atoms
3	A	400	NAD	O4D-C1D-N1N-C6N
3	B	401	NAD	O4D-C1D-N1N-C6N
3	B	401	NAD	PN-O3-PA-O1A
3	A	400	NAD	PN-O3-PA-O5B
3	B	401	NAD	PN-O3-PA-O5B

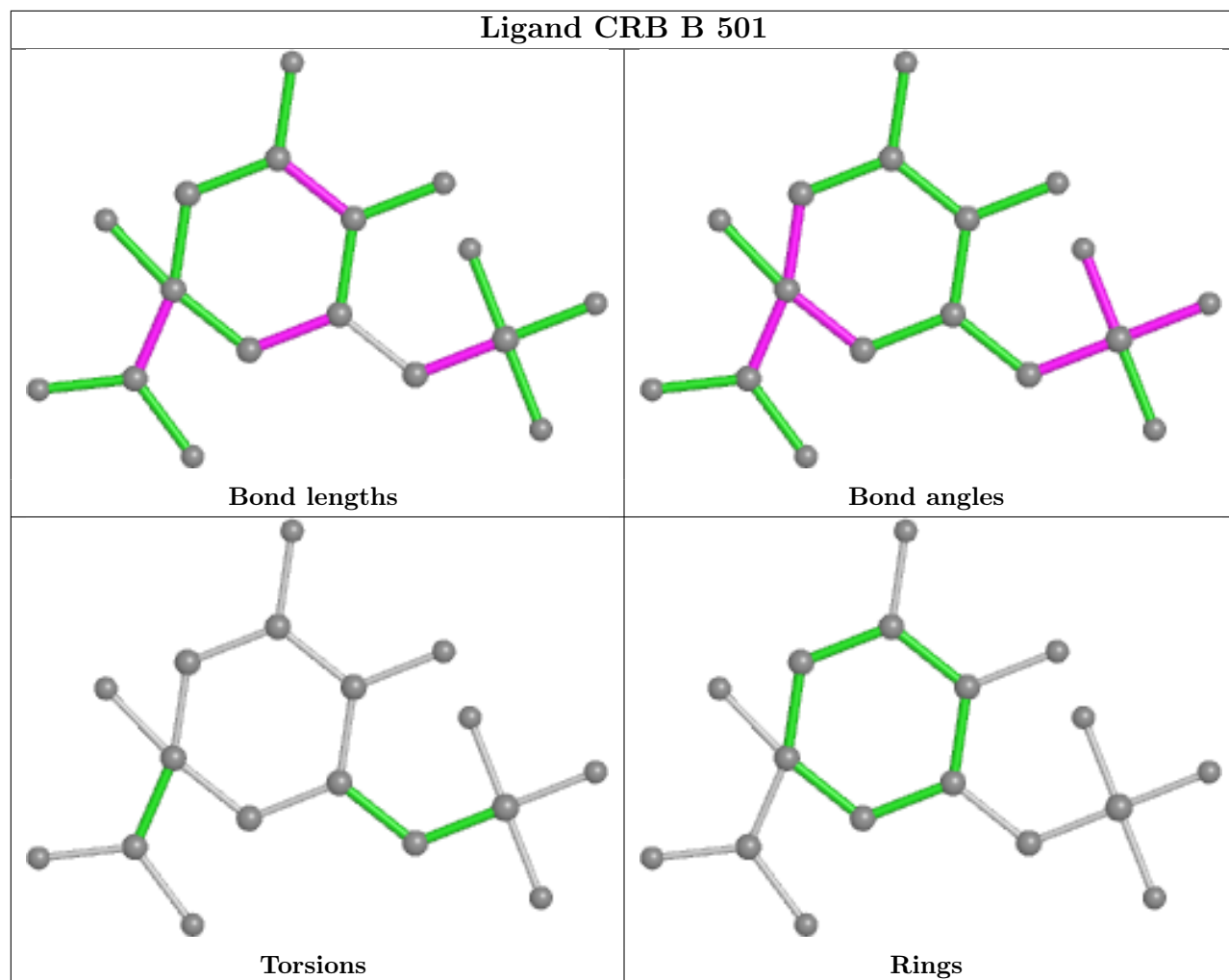
There are no ring outliers.

3 monomers are involved in 6 short contacts:

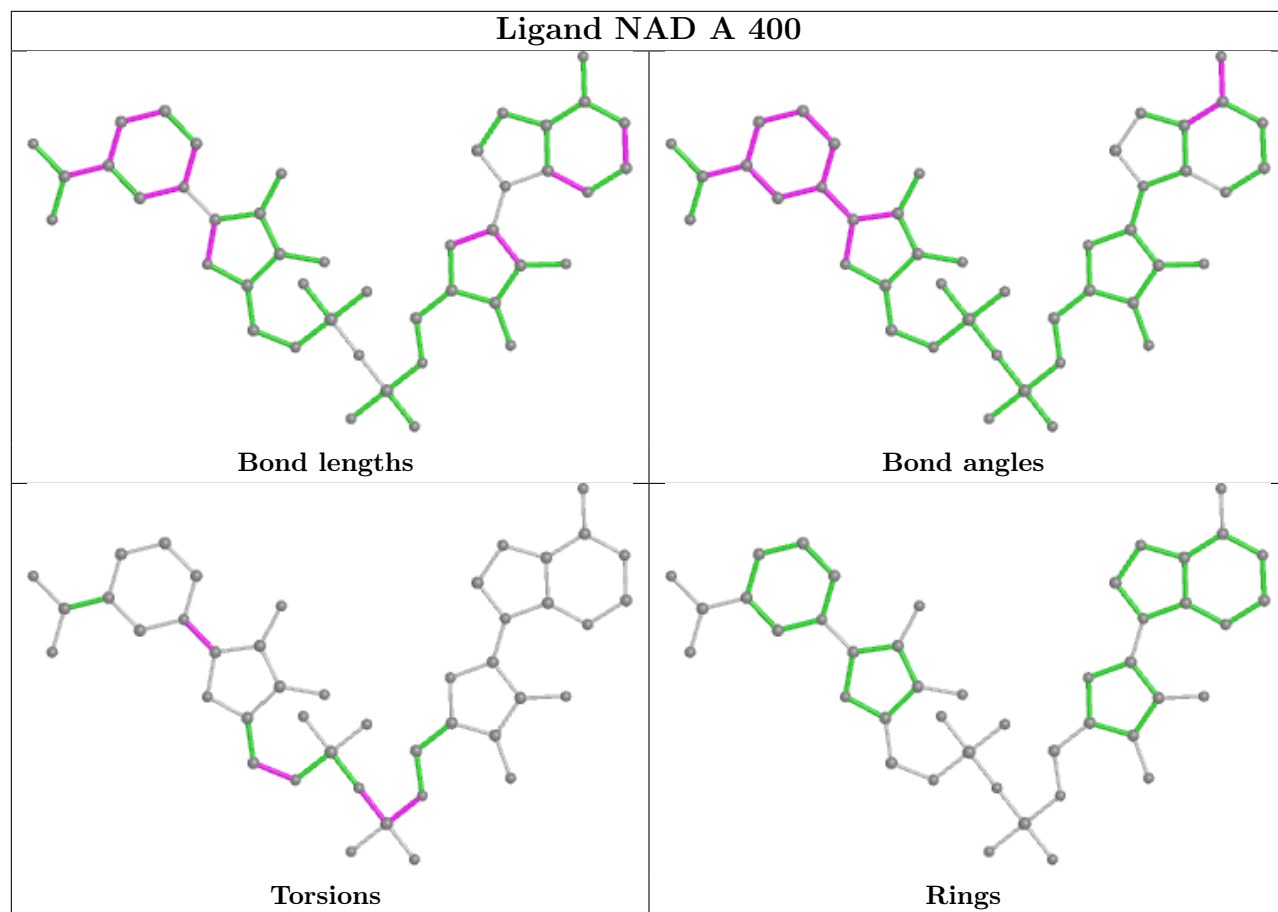
Mol	Chain	Res	Type	Clashes	Symm-Clashes
4	B	501	CRB	1	0
3	A	400	NAD	3	0
3	B	401	NAD	2	0

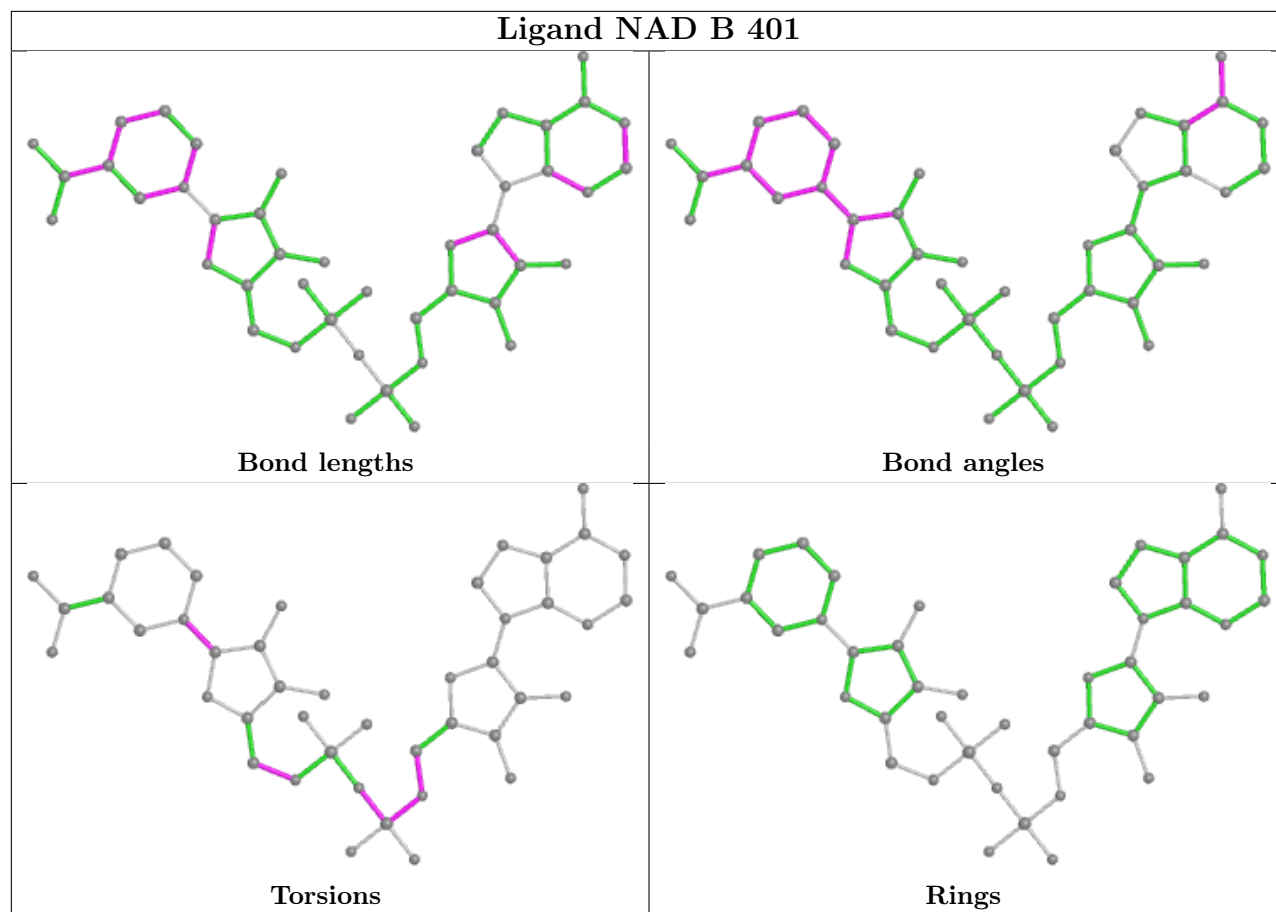
The following is a two-dimensional graphical depiction of Mogul quality analysis of bond lengths, bond angles, torsion angles, and ring geometry for all instances of the Ligand of Interest. In addition, ligands with molecular weight > 250 and outliers as shown on the validation Tables will also be included. For torsion angles, if less than 5% of the Mogul distribution of torsion angles is within 10 degrees of the torsion angle in question, then that torsion angle is considered an outlier. Any bond that is central to one or more torsion angles identified as an outlier by Mogul will be highlighted in the graph. For rings, the root-mean-square deviation (RMSD) between the ring in question and similar rings identified by Mogul is calculated over all ring torsion angles. If the average RMSD is greater than 60 degrees and the minimal RMSD between the ring in question and any Mogul-identified rings is also greater than 60 degrees, then that ring is considered an outlier. The outliers are highlighted in purple. The color gray indicates Mogul did not find sufficient equivalents in the CSD to analyse the geometry.











## 5.7 Other polymers [i](#)

There are no such residues in this entry.

## 5.8 Polymer linkage issues [i](#)

There are no chain breaks in this entry.

## 6 Fit of model and data [i](#)

### 6.1 Protein, DNA and RNA chains [i](#)

In the following table, the column labelled ‘#RSRZ> 2’ contains the number (and percentage) of RSRZ outliers, followed by percent RSRZ outliers for the chain as percentile scores relative to all X-ray entries and entries of similar resolution. The OWAB column contains the minimum, median, 95<sup>th</sup> percentile and maximum values of the occupancy-weighted average B-factor per residue. The column labelled ‘Q< 0.9’ lists the number of (and percentage) of residues with an average occupancy less than 0.9.

Mol	Chain	Analysed	<RSRZ>	#RSRZ>2	OWAB(Å <sup>2</sup> )	Q<0.9
1	A	337/354 (95%)	0.11	17 (5%) 28 41	23, 52, 102, 140	0
1	B	337/354 (95%)	0.12	18 (5%) 26 38	27, 52, 100, 138	0
All	All	674/708 (95%)	0.11	35 (5%) 27 39	23, 52, 102, 140	0

The worst 5 of 35 RSRZ outliers are listed below:

Mol	Chain	Res	Type	RSRZ
1	A	318	LYS	6.8
1	A	340	LEU	5.7
1	B	340	LEU	5.7
1	B	318	LYS	4.7
1	B	339	GLN	4.7

### 6.2 Non-standard residues in protein, DNA, RNA chains [i](#)

There are no non-standard protein/DNA/RNA residues in this entry.

### 6.3 Carbohydrates [i](#)

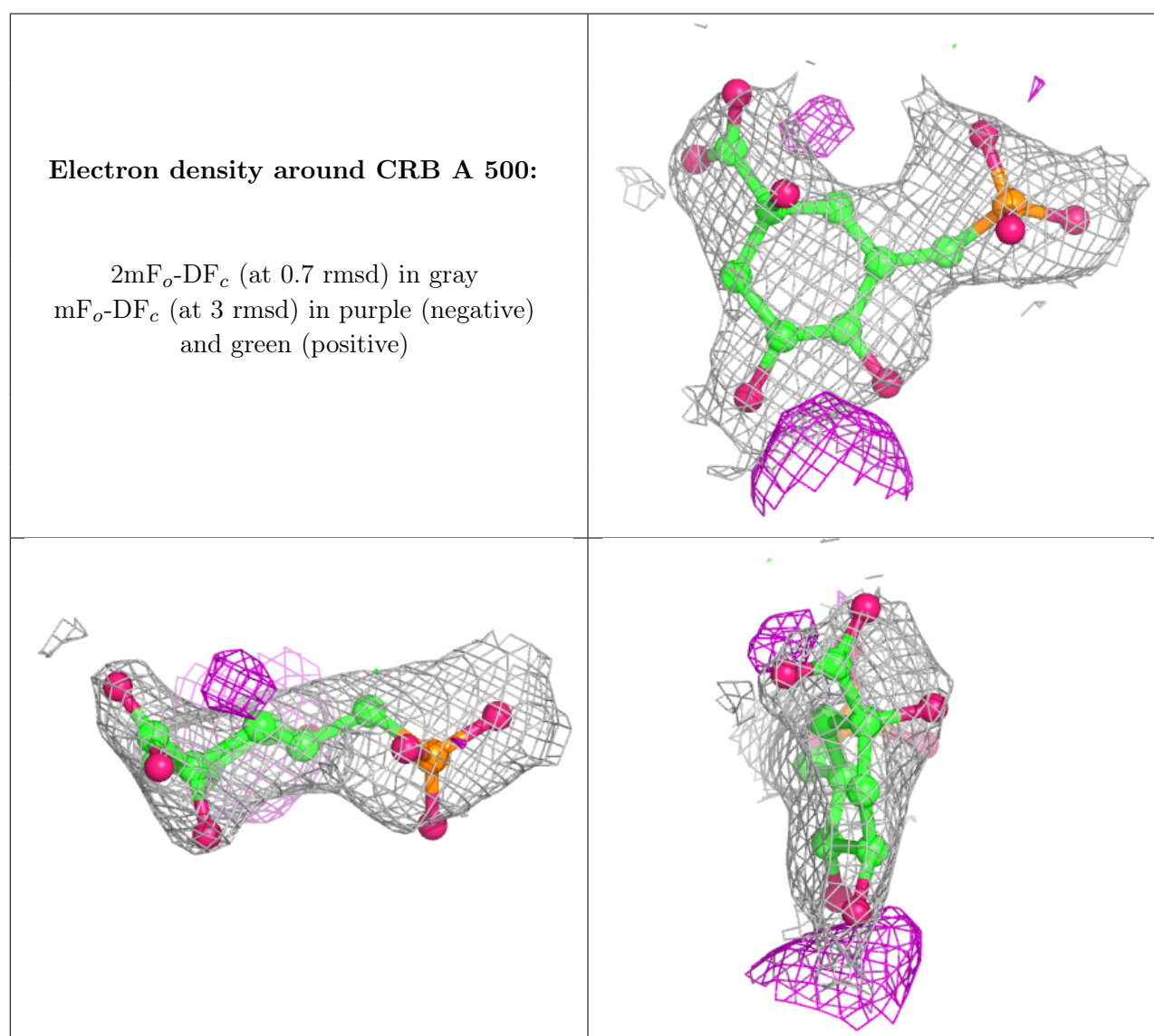
There are no monosaccharides in this entry.

### 6.4 Ligands [i](#)

In the following table, the Atoms column lists the number of modelled atoms in the group and the number defined in the chemical component dictionary. The B-factors column lists the minimum, median, 95<sup>th</sup> percentile and maximum values of B factors of atoms in the group. The column labelled ‘Q< 0.9’ lists the number of atoms with occupancy less than 0.9.

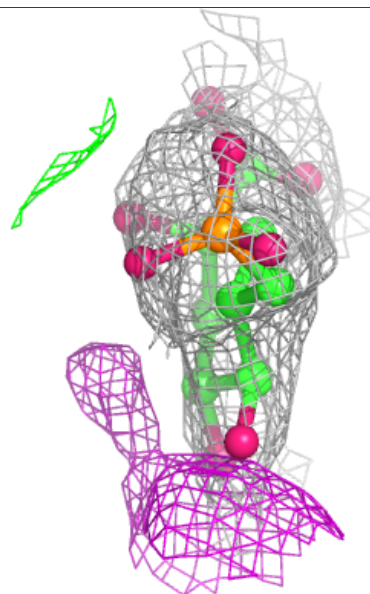
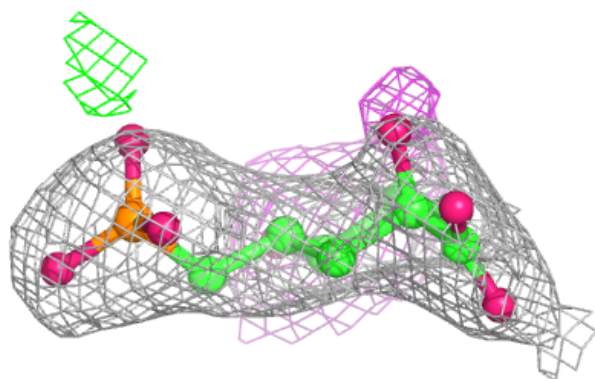
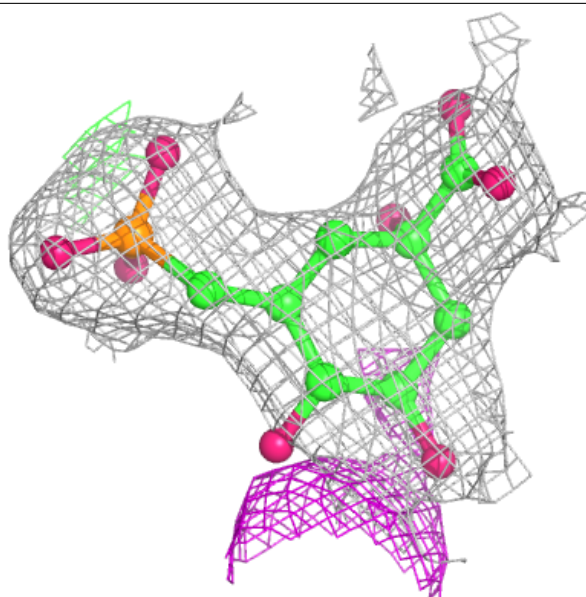
Mol	Type	Chain	Res	Atoms	RSCC	RSR	B-factors( $\text{\AA}^2$ )	Q<0.9
2	ZN	B	601	1/1	0.87	0.68	100,100,100,100	0
4	CRB	A	500	17/17	0.89	0.19	57,69,88,96	0
2	ZN	A	600	1/1	0.90	0.69	100,100,100,100	0
4	CRB	B	501	17/17	0.92	0.18	60,71,88,93	0
3	NAD	A	400	44/44	0.97	0.10	22,35,52,58	0
3	NAD	B	401	44/44	0.97	0.12	19,38,52,70	0

The following is a graphical depiction of the model fit to experimental electron density of all instances of the Ligand of Interest. In addition, ligands with molecular weight > 250 and outliers as shown on the geometry validation Tables will also be included. Each fit is shown from different orientation to approximate a three-dimensional view.



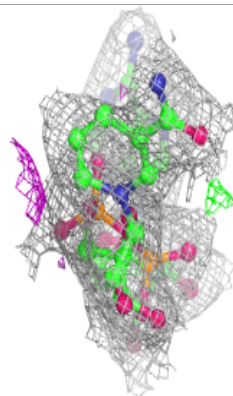
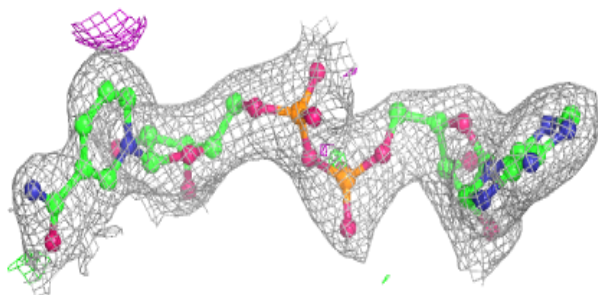
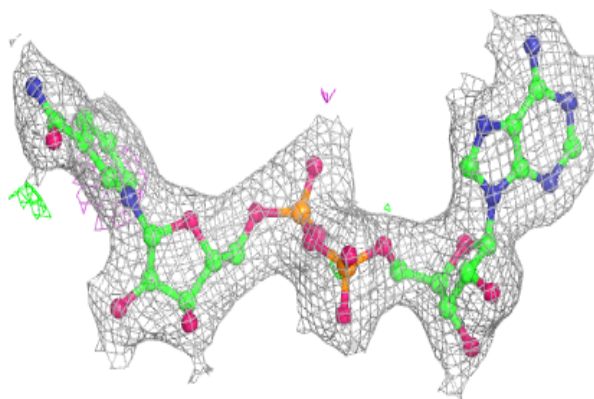
**Electron density around CRB B 501:**

$2mF_o-DF_c$  (at 0.7 rmsd) in gray  
 $mF_o-DF_c$  (at 3 rmsd) in purple (negative)  
and green (positive)

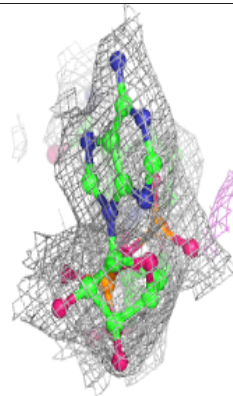
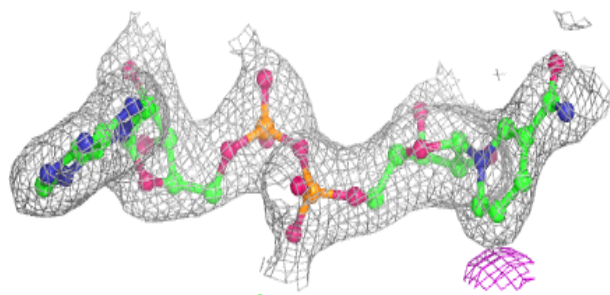
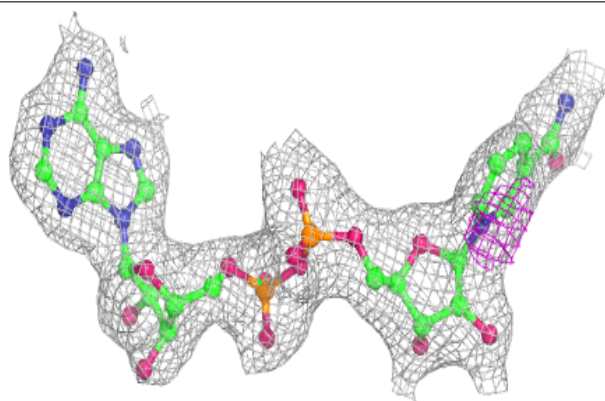


**Electron density around NAD A 400:**

$2mF_o-DF_c$  (at 0.7 rmsd) in gray  
 $mF_o-DF_c$  (at 3 rmsd) in purple (negative)  
and green (positive)

**Electron density around NAD B 401:**

$2mF_o-DF_c$  (at 0.7 rmsd) in gray  
 $mF_o-DF_c$  (at 3 rmsd) in purple (negative)  
and green (positive)



## 6.5 Other polymers [i](#)

There are no such residues in this entry.