



Full wwPDB X-ray Structure Validation Report ⓘ

Nov 1, 2023 – 05:03 PM JST

PDB ID : 5WSB
Title : Pyruvate kinase (PYK) from Mycobacterium tuberculosis in complex with Oxalate, allosteric activators AMP and Glucose 6-Phosphate
Authors : Zhong, W.; Cai, Q.; El Sahili, A.; Lescar, J.; Dedon, P.C.
Deposited on : 2016-12-06
Resolution : 2.25 Å(reported)

This is a Full wwPDB X-ray Structure Validation Report for a publicly released PDB entry.

We welcome your comments at validation@mail.wwpdb.org

A user guide is available at

<https://www.wwpdb.org/validation/2017/XrayValidationReportHelp>

with specific help available everywhere you see the ⓘ symbol.

The types of validation reports are described at

<http://www.wwpdb.org/validation/2017/FAQs#types>.

The following versions of software and data (see [references ⓘ](#)) were used in the production of this report:

MolProbity : 4.02b-467
Mogul : 1.8.5 (274361), CSD as541be (2020)
Xtriage (Phenix) : 1.13
EDS : 2.36
buster-report : 1.1.7 (2018)
Percentile statistics : 20191225.v01 (using entries in the PDB archive December 25th 2019)
Refmac : 5.8.0158
CCP4 : 7.0.044 (Gargrove)
Ideal geometry (proteins) : Engh & Huber (2001)
Ideal geometry (DNA, RNA) : Parkinson et al. (1996)
Validation Pipeline (wwPDB-VP) : 2.36

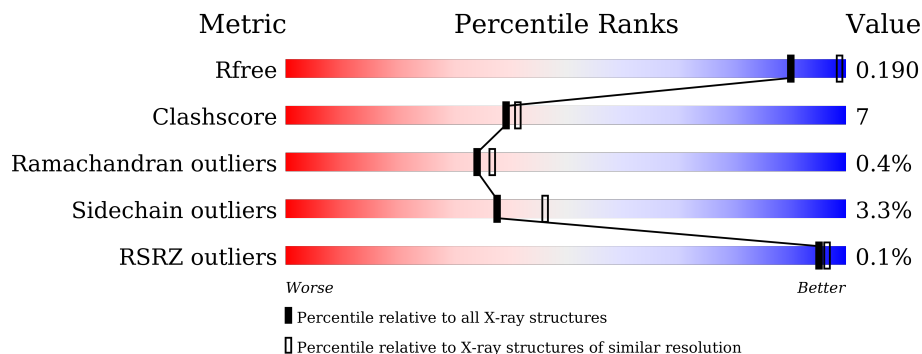
1 Overall quality at a glance

The following experimental techniques were used to determine the structure:

X-RAY DIFFRACTION

The reported resolution of this entry is 2.25 Å.

Percentile scores (ranging between 0-100) for global validation metrics of the entry are shown in the following graphic. The table shows the number of entries on which the scores are based.



Metric	Whole archive (#Entries)	Similar resolution (#Entries, resolution range(Å))
R_{free}	130704	1377 (2.26-2.26)
Clashscore	141614	1487 (2.26-2.26)
Ramachandran outliers	138981	1449 (2.26-2.26)
Sidechain outliers	138945	1450 (2.26-2.26)
RSRZ outliers	127900	1356 (2.26-2.26)

The table below summarises the geometric issues observed across the polymeric chains and their fit to the electron density. The red, orange, yellow and green segments of the lower bar indicate the fraction of residues that contain outliers for ≥ 3 , 2, 1 and 0 types of geometric quality criteria respectively. A grey segment represents the fraction of residues that are not modelled. The numeric value for each fraction is indicated below the corresponding segment, with a dot representing fractions $\leq 5\%$. The upper red bar (where present) indicates the fraction of residues that have poor fit to the electron density. The numeric value is given above the bar.

Mol	Chain	Length	Quality of chain
1	A	475	86% 11% ..
1	B	475	84% 14% ..
1	C	475	84% 15% ..
1	D	475	80% 17% ..

2 Entry composition [i](#)

There are 8 unique types of molecules in this entry. The entry contains 14777 atoms, of which 0 are hydrogens and 0 are deuteriums.

In the tables below, the ZeroOcc column contains the number of atoms modelled with zero occupancy, the AltConf column contains the number of residues with at least one atom in alternate conformation and the Trace column contains the number of residues modelled with at most 2 atoms.

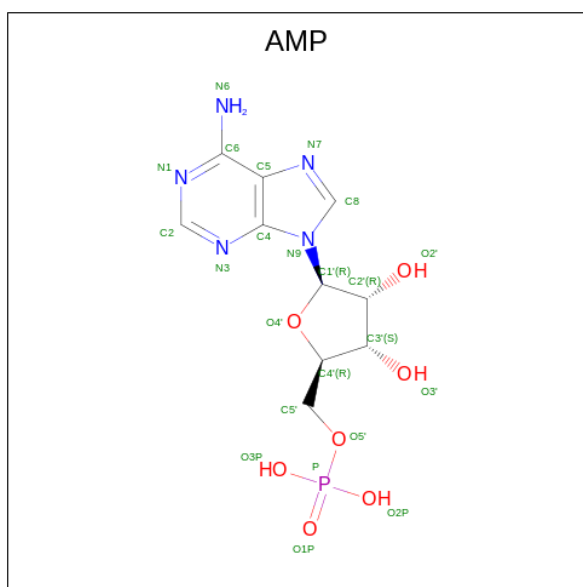
- Molecule 1 is a protein called Pyruvate kinase.

Mol	Chain	Residues	Atoms					ZeroOcc	AltConf	Trace
			Total	C	N	O	S			
1	A	471	3543	2206	640	679	18	0	0	0
1	B	471	3543	2206	640	679	18	0	0	0
1	C	471	3543	2206	640	679	18	0	0	0
1	D	471	3543	2206	640	679	18	0	0	0

There are 12 discrepancies between the modelled and reference sequences:

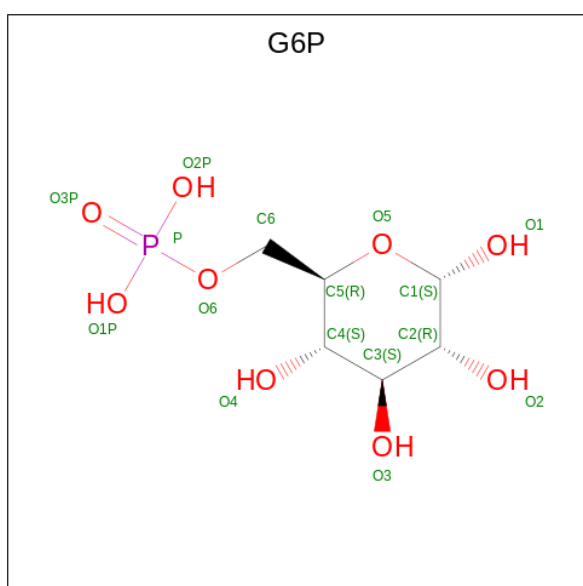
Chain	Residue	Modelled	Actual	Comment	Reference
A	-2	GLY	-	expression tag	UNP P9WKE5
A	-1	GLY	-	expression tag	UNP P9WKE5
A	0	HIS	-	expression tag	UNP P9WKE5
B	-2	GLY	-	expression tag	UNP P9WKE5
B	-1	GLY	-	expression tag	UNP P9WKE5
B	0	HIS	-	expression tag	UNP P9WKE5
C	-2	GLY	-	expression tag	UNP P9WKE5
C	-1	GLY	-	expression tag	UNP P9WKE5
C	0	HIS	-	expression tag	UNP P9WKE5
D	-2	GLY	-	expression tag	UNP P9WKE5
D	-1	GLY	-	expression tag	UNP P9WKE5
D	0	HIS	-	expression tag	UNP P9WKE5

- Molecule 2 is ADENOSINE MONOPHOSPHATE (three-letter code: AMP) (formula: C₁₀H₁₄N₅O₇P).



Mol	Chain	Residues	Atoms					ZeroOcc	AltConf
			Total	C	N	O	P		
2	A	1	Total	C	N	O	P	0	0
			23	10	5	7	1		
2	B	1	Total	C	N	O	P	0	0
			23	10	5	7	1		
2	C	1	Total	C	N	O	P	0	0
			23	10	5	7	1		
2	D	1	Total	C	N	O	P	0	0
			23	10	5	7	1		

- Molecule 3 is 6-O-phosphono-alpha-D-glucopyranose (three-letter code: G6P) (formula: $C_6H_{13}O_9P$).

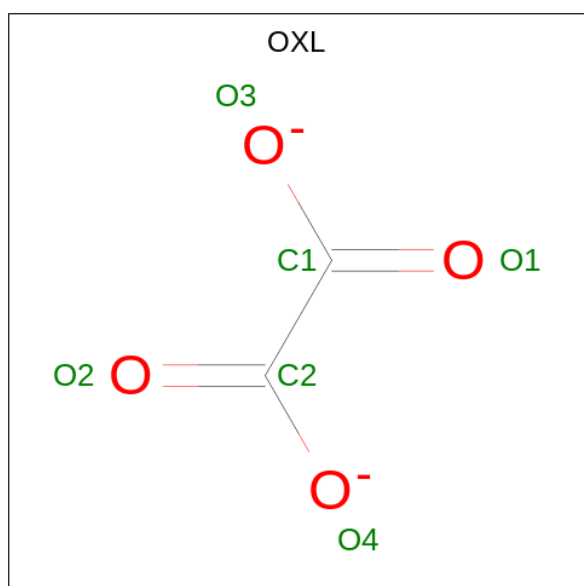


Mol	Chain	Residues	Atoms				ZeroOcc	AltConf
3	A	1	Total	C	O	P	0	0
			16	6	9	1		
3	B	1	Total	C	O	P	0	0
			16	6	9	1		
3	C	1	Total	C	O	P	0	0
			16	6	9	1		
3	D	1	Total	C	O	P	0	0
			16	6	9	1		

- Molecule 4 is MAGNESIUM ION (three-letter code: MG) (formula: Mg).

Mol	Chain	Residues	Atoms		ZeroOcc	AltConf
4	A	1	Total	Mg	0	0
			1	1		
4	B	1	Total	Mg	0	0
			1	1		
4	C	1	Total	Mg	0	0
			1	1		
4	D	1	Total	Mg	0	0
			1	1		

- Molecule 5 is OXALATE ION (three-letter code: OXL) (formula: C₂O₄).



Mol	Chain	Residues	Atoms			ZeroOcc	AltConf
5	A	1	Total	C	O	0	0
			6	2	4		
5	B	1	Total	C	O	0	0
			6	2	4		

Continued on next page...

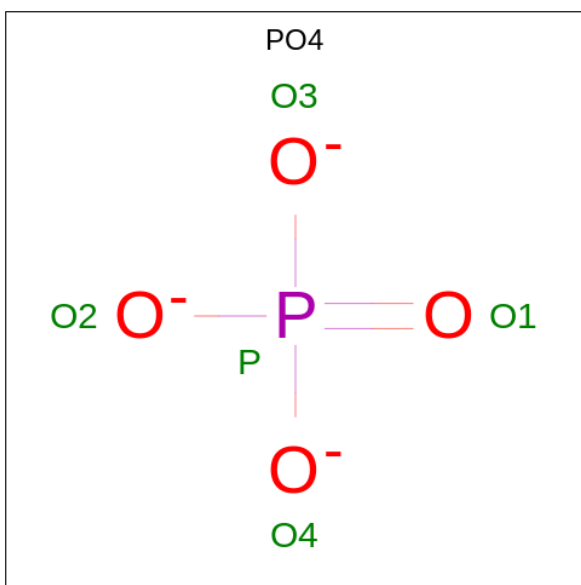
Continued from previous page...

Mol	Chain	Residues	Atoms	ZeroOcc	AltConf
5	C	1	Total C O 6 2 4	0	0
5	D	1	Total C O 6 2 4	0	0

- Molecule 6 is POTASSIUM ION (three-letter code: K) (formula: K).

Mol	Chain	Residues	Atoms	ZeroOcc	AltConf
6	B	1	Total K 1 1	0	0

- Molecule 7 is PHOSPHATE ION (three-letter code: PO4) (formula: O₄P).



Mol	Chain	Residues	Atoms	ZeroOcc	AltConf
7	C	1	Total O P 5 4 1	0	0
7	D	1	Total O P 5 4 1	0	0

- Molecule 8 is water.

Mol	Chain	Residues	Atoms	ZeroOcc	AltConf
8	A	116	Total O 116 116	0	0
8	B	117	Total O 117 117	0	0

Continued on next page...

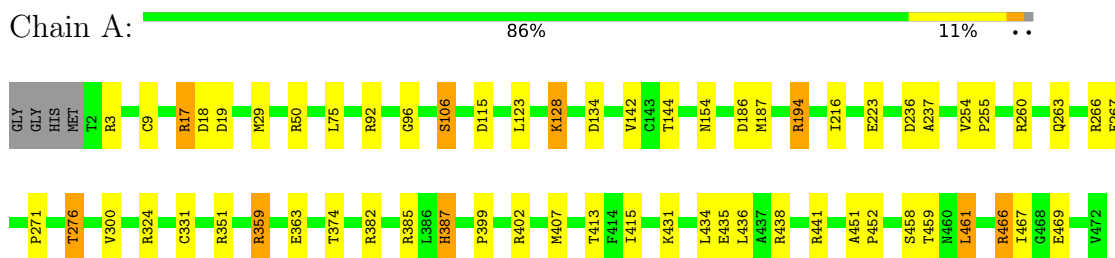
Continued from previous page...

Mol	Chain	Residues	Atoms		ZeroOcc	AltConf
8	C	74	Total 74	O 74	0	0
8	D	103	Total 103	O 103	0	0

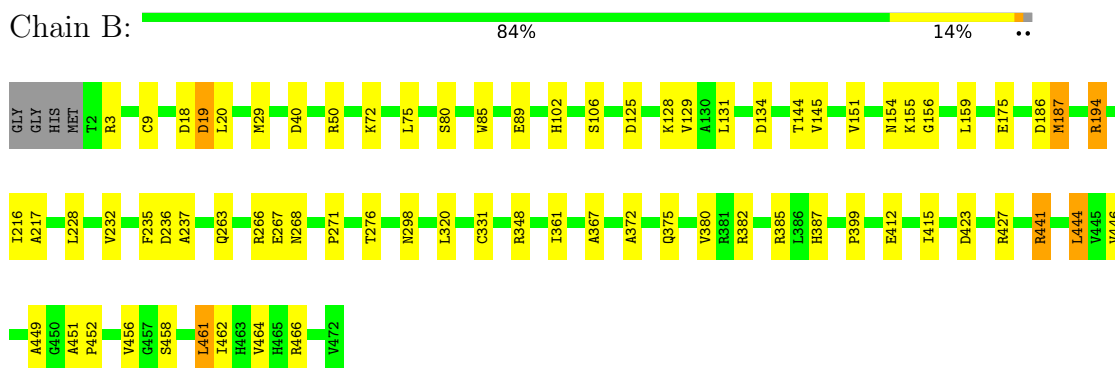
3 Residue-property plots [i](#)

These plots are drawn for all protein, RNA, DNA and oligosaccharide chains in the entry. The first graphic for a chain summarises the proportions of the various outlier classes displayed in the second graphic. The second graphic shows the sequence view annotated by issues in geometry and electron density. Residues are color-coded according to the number of geometric quality criteria for which they contain at least one outlier: green = 0, yellow = 1, orange = 2 and red = 3 or more. A red dot above a residue indicates a poor fit to the electron density ($RSRZ > 2$). Stretches of 2 or more consecutive residues without any outlier are shown as a green connector. Residues present in the sample, but not in the model, are shown in grey.

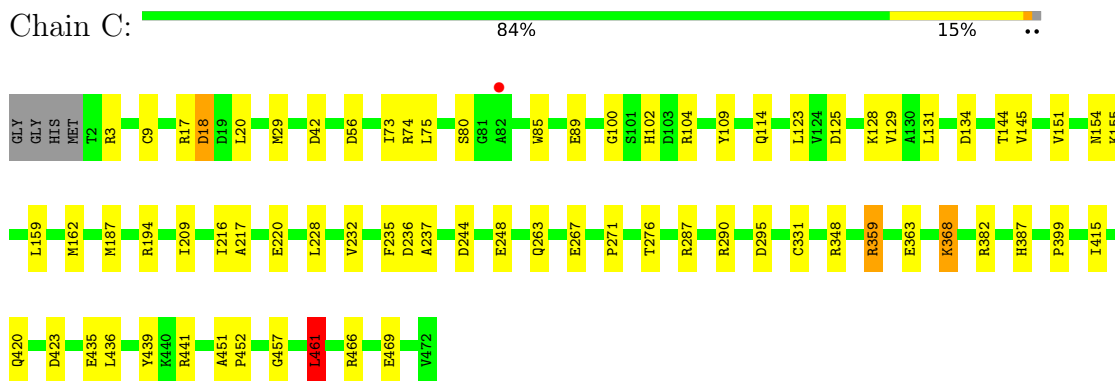
- Molecule 1: Pyruvate kinase




- Molecule 1: Pyruvate kinase

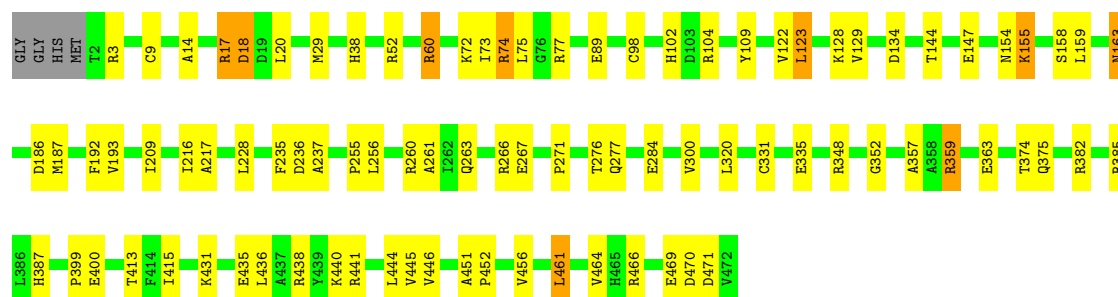


- Molecule 1: Pyruvate kinase



- Molecule 1: Pyruvate kinase

Chain D:  80% 17% ..



4 Data and refinement statistics i

Property	Value	Source
Space group	P 31	Depositor
Cell constants a, b, c, α , β , γ	125.63Å 125.63Å 144.51Å 90.00° 90.00° 120.00°	Depositor
Resolution (Å)	62.82 – 2.25 48.17 – 2.25	Depositor EDS
% Data completeness (in resolution range)	99.3 (62.82-2.25) 99.3 (48.17-2.25)	Depositor EDS
R_{merge}	(Not available)	Depositor
R_{sym}	(Not available)	Depositor
$\langle I/\sigma(I) \rangle$ ¹	2.08 (at 2.24Å)	Xtrriage
Refinement program	REFMAC 5.8.0158	Depositor
R, R_{free}	0.187 , 0.228 0.149 , 0.190	Depositor DCC
R_{free} test set	5943 reflections (4.94%)	wwPDB-VP
Wilson B-factor (Å ²)	31.9	Xtrriage
Anisotropy	0.741	Xtrriage
Bulk solvent k_{sol} (e/Å ³), B_{sol} (Å ²)	0.35 , 11.8	EDS
L-test for twinning ²	$\langle L \rangle = 0.43$, $\langle L^2 \rangle = 0.25$	Xtrriage
Estimated twinning fraction	0.477 for -h,-k,l 0.478 for h,-h-k,-l 0.477 for -k,-h,-l	Xtrriage
Reported twinning fraction	0.264 for H, K, L 0.255 for -K, -H, -L 0.240 for -h,-k,l 0.242 for K, H, -L	Depositor
Outliers	0 of 120239 reflections	Xtrriage
F_o, F_c correlation	0.97	EDS
Total number of atoms	14777	wwPDB-VP
Average B, all atoms (Å ²)	37.0	wwPDB-VP

Xtrriage's analysis on translational NCS is as follows: *The largest off-origin peak in the Patterson function is 4.22% of the height of the origin peak. No significant pseudotranslation is detected.*

¹Intensities estimated from amplitudes.

²Theoretical values of $\langle |L| \rangle$, $\langle L^2 \rangle$ for acentric reflections are 0.5, 0.333 respectively for untwinned datasets, and 0.375, 0.2 for perfectly twinned datasets.

5 Model quality i

5.1 Standard geometry i

Bond lengths and bond angles in the following residue types are not validated in this section: OXL, G6P, AMP, MG, K, PO4

The Z score for a bond length (or angle) is the number of standard deviations the observed value is removed from the expected value. A bond length (or angle) with $|Z| > 5$ is considered an outlier worth inspection. RMSZ is the root-mean-square of all Z scores of the bond lengths (or angles).

Mol	Chain	Bond lengths		Bond angles	
		RMSZ	# Z >5	RMSZ	# Z >5
1	A	0.61	0/3593	0.69	0/4881
1	B	0.61	0/3593	0.70	0/4881
1	C	0.61	0/3593	0.67	1/4881 (0.0%)
1	D	0.60	0/3593	0.67	1/4881 (0.0%)
All	All	0.61	0/14372	0.68	2/19524 (0.0%)

There are no bond length outliers.

All (2) bond angle outliers are listed below:

Mol	Chain	Res	Type	Atoms	Z	Observed(°)	Ideal(°)
1	C	461	LEU	CA-CB-CG	5.62	128.22	115.30
1	D	60	ARG	NE-CZ-NH2	-5.29	117.65	120.30

There are no chirality outliers.

There are no planarity outliers.

5.2 Too-close contacts i

In the following table, the Non-H and H(model) columns list the number of non-hydrogen atoms and hydrogen atoms in the chain respectively. The H(added) column lists the number of hydrogen atoms added and optimized by MolProbity. The Clashes column lists the number of clashes within the asymmetric unit, whereas Symm-Clashes lists symmetry-related clashes.

Mol	Chain	Non-H	H(model)	H(added)	Clashes	Symm-Clashes
1	A	3543	0	3608	53	1
1	B	3543	0	3608	46	0
1	C	3543	0	3608	47	1
1	D	3543	0	3608	70	0
2	A	23	0	12	2	0

Continued on next page...

Continued from previous page...

Mol	Chain	Non-H	H(model)	H(added)	Clashes	Symm-Clashes
2	B	23	0	12	1	0
2	C	23	0	12	1	0
2	D	23	0	12	1	0
3	A	16	0	11	2	0
3	B	16	0	11	3	0
3	C	16	0	11	4	0
3	D	16	0	11	2	0
4	A	1	0	0	0	0
4	B	1	0	0	0	0
4	C	1	0	0	0	0
4	D	1	0	0	0	0
5	A	6	0	0	0	0
5	B	6	0	0	0	0
5	C	6	0	0	0	0
5	D	6	0	0	0	0
6	B	1	0	0	0	0
7	C	5	0	0	0	0
7	D	5	0	0	1	0
8	A	116	0	0	13	0
8	B	117	0	0	8	0
8	C	74	0	0	8	0
8	D	103	0	0	12	0
All	All	14777	0	14524	213	1

The all-atom clashscore is defined as the number of clashes found per 1000 atoms (including hydrogen atoms). The all-atom clashscore for this structure is 7.

All (213) close contacts within the same asymmetric unit are listed below, sorted by their clash magnitude.

Atom-1	Atom-2	Interatomic distance (Å)	Clash overlap (Å)
1:A:434:LEU:HD21	1:A:467:ILE:CG2	1.96	0.95
1:A:466:ARG:HB3	1:A:469:GLU:HG3	1.49	0.93
1:A:434:LEU:HD21	1:A:467:ILE:HG21	1.56	0.87
1:D:331:CYS:O	1:D:335:GLU:HG3	1.74	0.86
1:A:434:LEU:CD2	1:A:467:ILE:HG21	2.07	0.85
1:A:260:ARG:HG3	8:A:611:HOH:O	1.77	0.83
1:D:38:HIS:NE2	7:D:505:PO4:O1	2.16	0.79
1:D:470:ASP:OD2	8:D:601:HOH:O	2.01	0.78
1:A:260:ARG:CG	8:A:611:HOH:O	2.32	0.77
1:C:74:ARG:NE	1:C:154:ASN:O	2.19	0.76
1:A:434:LEU:CD2	1:A:467:ILE:CG2	2.62	0.76

Continued on next page...

Continued from previous page...

Atom-1	Atom-2	Interatomic distance (Å)	Clash overlap (Å)
3:A:502:G6P:O2P	8:A:601:HOH:O	2.03	0.76
1:C:382:ARG:HH12	3:C:502:G6P:H62	1.49	0.75
1:C:17:ARG:HG3	1:C:18:ASP:N	2.02	0.73
1:D:374:THR:HA	2:D:501:AMP:H5'2	1.70	0.72
1:D:72:LYS:HG3	1:D:74:ARG:CD	2.20	0.72
1:D:72:LYS:HG3	1:D:74:ARG:HD2	1.72	0.70
1:D:413:THR:O	8:D:603:HOH:O	2.09	0.70
1:D:400:GLU:OE2	8:D:602:HOH:O	2.09	0.70
1:B:298:ASN:HB3	8:B:672:HOH:O	1.91	0.70
1:C:469:GLU:OE1	8:C:601:HOH:O	2.10	0.70
1:D:436:LEU:O	8:D:605:HOH:O	2.10	0.70
1:B:441:ARG:H	1:B:441:ARG:CD	2.04	0.69
1:C:287:ARG:NH2	1:D:147:GLU:OE1	2.23	0.68
1:D:284:GLU:OE1	8:D:604:HOH:O	2.10	0.68
1:D:382:ARG:HH22	3:D:502:G6P:H1	1.59	0.66
1:C:382:ARG:NH1	3:C:502:G6P:H62	2.11	0.66
1:A:399:PRO:HA	1:A:415:ILE:HD12	1.78	0.66
1:D:399:PRO:HA	1:D:415:ILE:HD12	1.77	0.65
1:D:461:LEU:HD12	1:D:461:LEU:C	2.16	0.65
1:A:374:THR:HA	2:A:501:AMP:H5'2	1.79	0.65
1:A:50:ARG:HG2	1:A:50:ARG:HH11	1.63	0.64
1:D:128:LYS:O	1:D:129:VAL:HG23	1.98	0.64
1:B:399:PRO:HA	1:B:415:ILE:HD12	1.79	0.63
1:C:382:ARG:HH22	3:C:502:G6P:H1	1.63	0.63
1:C:73:ILE:HG23	1:C:109:TYR:HB2	1.81	0.63
1:C:399:PRO:HA	1:C:415:ILE:HD12	1.81	0.62
1:D:60:ARG:HD2	8:D:635:HOH:O	1.99	0.62
1:B:75:LEU:O	1:B:154:ASN:HA	1.99	0.62
1:D:134:ASP:OD2	1:D:144:THR:OG1	2.16	0.62
1:A:187:MET:SD	1:A:407:MET:CE	2.87	0.62
1:B:441:ARG:H	1:B:441:ARG:NE	1.98	0.62
1:B:128:LYS:O	1:B:129:VAL:HG23	2.01	0.61
1:C:75:LEU:O	1:C:154:ASN:HA	1.99	0.61
1:D:155:LYS:HA	1:D:155:LYS:CE	2.30	0.61
1:A:75:LEU:O	1:A:154:ASN:HA	2.01	0.61
1:C:423:ASP:O	8:C:604:HOH:O	2.16	0.61
1:D:17:ARG:HD2	1:D:18:ASP:H	1.66	0.60
1:D:75:LEU:O	1:D:154:ASN:HA	2.00	0.60
1:B:19:ASP:HA	8:B:694:HOH:O	2.02	0.60
1:A:387:HIS:O	8:A:604:HOH:O	2.17	0.60
1:D:98:CYS:HB3	1:D:104:ARG:NH2	2.16	0.60

Continued on next page...

Continued from previous page...

Atom-1	Atom-2	Interatomic distance (Å)	Clash overlap (Å)
1:C:17:ARG:O	8:C:603:HOH:O	2.16	0.59
1:A:128:LYS:N	1:A:128:LYS:HE3	2.17	0.59
1:A:466:ARG:HB3	1:A:469:GLU:CG	2.30	0.58
1:B:449:ALA:HB3	1:B:461:LEU:HD12	1.86	0.58
1:A:17:ARG:HB3	1:A:17:ARG:NH2	2.18	0.58
1:C:399:PRO:HA	1:C:415:ILE:CD1	2.33	0.58
1:D:440:LYS:HD3	1:D:441:ARG:O	2.04	0.58
1:C:159:LEU:HD13	1:C:162:MET:CE	2.34	0.57
1:D:399:PRO:HA	1:D:415:ILE:CD1	2.33	0.57
1:A:399:PRO:HA	1:A:415:ILE:CD1	2.34	0.57
1:B:367:ALA:HA	1:B:444:LEU:HG	1.87	0.57
1:C:368:LYS:HE3	1:C:368:LYS:HA	1.86	0.57
1:B:399:PRO:HA	1:B:415:ILE:CD1	2.35	0.57
1:C:134:ASP:OD2	1:C:144:THR:OG1	2.18	0.56
1:D:444:LEU:HD11	1:D:464:VAL:CG1	2.34	0.56
1:C:3:ARG:HB2	1:C:331:CYS:SG	2.46	0.55
1:A:451:ALA:HA	1:A:452:PRO:C	2.26	0.55
1:D:451:ALA:HA	1:D:452:PRO:C	2.26	0.55
1:B:451:ALA:HA	1:B:452:PRO:C	2.26	0.54
1:C:451:ALA:HA	1:C:452:PRO:C	2.27	0.54
1:C:295:ASP:O	8:C:605:HOH:O	2.18	0.54
1:A:216:ILE:HG12	1:A:237:ALA:HB3	1.90	0.54
1:A:19:ASP:HB3	8:A:654:HOH:O	2.07	0.54
1:C:125:ASP:OD2	1:C:155:LYS:HE3	2.07	0.54
1:D:155:LYS:HA	1:D:155:LYS:HE3	1.90	0.54
1:C:461:LEU:C	1:C:461:LEU:CD1	2.76	0.54
1:D:461:LEU:HD12	1:D:461:LEU:O	2.08	0.53
1:A:324:ARG:NE	8:A:603:HOH:O	2.15	0.53
1:D:17:ARG:HD2	1:D:18:ASP:N	2.24	0.52
1:A:434:LEU:HD21	1:A:467:ILE:HG22	1.86	0.52
1:C:216:ILE:HG12	1:C:237:ALA:HB3	1.91	0.52
1:D:193:VAL:O	8:D:606:HOH:O	2.19	0.52
1:B:3:ARG:HB2	1:B:331:CYS:SG	2.50	0.52
1:A:187:MET:SD	1:A:407:MET:HE2	2.51	0.51
1:B:446:VAL:HG22	1:B:464:VAL:HG22	1.93	0.51
1:D:300:VAL:HG13	8:D:628:HOH:O	2.11	0.51
1:A:9:CYS:HB2	1:A:29:MET:SD	2.51	0.51
1:B:216:ILE:HG12	1:B:237:ALA:HB3	1.93	0.50
1:A:382:ARG:HH22	3:A:502:G6P:H1	1.76	0.50
1:C:9:CYS:HB2	1:C:29:MET:SD	2.51	0.50
1:D:469:GLU:OE2	8:D:607:HOH:O	2.19	0.50

Continued on next page...

Continued from previous page...

Atom-1	Atom-2	Interatomic distance (Å)	Clash overlap (Å)
1:C:244:ASP:O	1:C:248:GLU:HG2	2.11	0.50
1:D:14:ALA:O	1:D:20:LEU:CD1	2.60	0.50
1:B:361:ILE:HD11	1:D:357:ALA:CB	2.42	0.50
1:D:14:ALA:O	8:D:608:HOH:O	2.20	0.50
1:B:375:GLN:HB3	1:B:456:VAL:HG12	1.94	0.49
1:C:461:LEU:C	1:C:461:LEU:HD13	2.31	0.49
1:D:216:ILE:HG12	1:D:237:ALA:HB3	1.94	0.49
1:D:263:GLN:O	1:D:267:GLU:HG2	2.12	0.49
1:B:268:ASN:O	3:B:502:G6P:O1	2.30	0.49
1:C:263:GLN:O	1:C:267:GLU:HG2	2.12	0.49
1:A:402:ARG:HD3	8:A:626:HOH:O	2.11	0.49
1:D:3:ARG:HB2	1:D:331:CYS:SG	2.52	0.49
1:A:324:ARG:NH1	8:A:616:HOH:O	2.46	0.49
1:B:263:GLN:O	1:B:267:GLU:HG2	2.12	0.49
1:C:436:LEU:CD1	1:C:436:LEU:N	2.75	0.49
1:A:461:LEU:HD12	1:A:461:LEU:C	2.33	0.49
1:A:3:ARG:HB2	1:A:331:CYS:SG	2.52	0.49
1:B:72:LYS:HE3	1:B:156:GLY:HA3	1.94	0.49
1:B:412:GLU:OE1	8:B:602:HOH:O	2.20	0.49
1:D:20:LEU:HA	1:D:20:LEU:HD23	1.70	0.49
1:A:187:MET:SD	1:A:407:MET:HE1	2.52	0.49
1:A:260:ARG:NE	8:A:611:HOH:O	2.37	0.49
1:D:73:ILE:HG23	1:D:109:TYR:HB2	1.95	0.48
1:C:209:ILE:HG22	1:C:209:ILE:O	2.12	0.48
1:A:263:GLN:O	1:A:267:GLU:HG2	2.12	0.48
1:B:134:ASP:OD2	1:B:144:THR:OG1	2.21	0.48
1:B:159:LEU:N	1:B:159:LEU:HD22	2.28	0.48
1:C:457:GLY:N	2:C:501:AMP:O2P	2.43	0.48
1:A:359:ARG:HD3	1:A:363:GLU:OE2	2.14	0.48
1:C:348:ARG:HD3	1:C:348:ARG:HA	1.55	0.48
1:A:300:VAL:HG13	8:A:632:HOH:O	2.14	0.48
1:A:50:ARG:HH11	1:A:50:ARG:CG	2.26	0.48
1:D:98:CYS:HB3	1:D:104:ARG:HH22	1.79	0.47
1:D:186:ASP:O	1:D:187:MET:HG3	2.14	0.47
1:B:348:ARG:HH11	1:B:348:ARG:HA	1.79	0.47
1:D:228:LEU:HD21	1:D:261:ALA:HA	1.95	0.47
1:D:256:LEU:O	1:D:260:ARG:HG3	2.15	0.47
1:D:72:LYS:HB2	1:D:192:PHE:HE2	1.80	0.47
1:A:359:ARG:NE	8:A:604:HOH:O	2.45	0.47
1:D:266:ARG:O	1:D:385:ARG:HD2	2.14	0.47
1:B:186:ASP:C	1:B:187:MET:HG3	2.35	0.46

Continued on next page...

Continued from previous page...

Atom-1	Atom-2	Interatomic distance (Å)	Clash overlap (Å)
1:B:385:ARG:NH2	3:B:502:G6P:O2P	2.42	0.46
1:C:220:GLU:OE2	8:C:606:HOH:O	2.20	0.46
1:D:155:LYS:HE3	1:D:155:LYS:CA	2.46	0.46
1:A:92:ARG:NH1	1:A:142:VAL:HG22	2.31	0.46
1:D:98:CYS:CB	1:D:104:ARG:NH2	2.79	0.46
1:B:9:CYS:HB2	1:B:29:MET:SD	2.56	0.45
1:B:20:LEU:HD23	1:B:20:LEU:HA	1.75	0.45
1:B:461:LEU:HD22	1:B:462:ILE:N	2.30	0.45
1:C:359:ARG:HB3	1:C:359:ARG:HH11	1.81	0.45
1:D:122:VAL:HG22	1:D:159:LEU:HD11	1.98	0.45
1:D:461:LEU:C	1:D:461:LEU:CD1	2.84	0.45
1:B:451:ALA:HB3	1:D:471:ASP:O	2.17	0.45
1:C:382:ARG:HH12	3:C:502:G6P:C6	2.24	0.45
1:B:427:ARG:NH1	8:B:614:HOH:O	2.38	0.45
1:A:134:ASP:OD2	1:A:144:THR:OG1	2.23	0.45
1:B:125:ASP:OD1	1:B:125:ASP:O	2.34	0.45
1:A:431:LYS:O	1:A:435:GLU:HG3	2.16	0.45
1:D:359:ARG:HD3	1:D:363:GLU:OE2	2.17	0.45
1:C:128:LYS:O	1:C:129:VAL:HG23	2.17	0.45
1:C:441:ARG:NE	8:C:616:HOH:O	2.46	0.44
1:A:266:ARG:O	1:A:385:ARG:HD2	2.16	0.44
1:C:159:LEU:HD13	1:C:162:MET:HE1	1.98	0.44
1:C:131:LEU:HD22	1:C:145:VAL:HG22	2.00	0.44
1:B:125:ASP:HB2	1:B:155:LYS:HG2	1.99	0.44
1:D:375:GLN:HG2	1:D:456:VAL:HG12	2.00	0.44
1:D:431:LYS:O	1:D:435:GLU:HG3	2.18	0.44
8:C:655:HOH:O	1:D:123:LEU:HD11	2.18	0.44
1:D:158:SER:C	1:D:159:LEU:HD22	2.38	0.43
1:B:458:SER:HG	2:B:501:AMP:HO3'	1.66	0.43
1:A:402:ARG:HG3	1:A:413:THR:HB	2.00	0.43
1:B:266:ARG:O	1:B:385:ARG:HD2	2.18	0.43
1:D:9:CYS:HB2	1:D:29:MET:SD	2.57	0.43
1:A:96:GLY:O	1:A:106:SER:OG	2.37	0.43
1:C:85:TRP:CE3	1:C:151:VAL:HG11	2.53	0.43
1:A:186:ASP:C	1:A:187:MET:HG3	2.39	0.43
1:D:352:GLY:HA3	3:D:502:G6P:O3P	2.19	0.43
1:D:255:PRO:HA	8:D:686:HOH:O	2.18	0.43
1:A:351:ARG:HD3	2:A:501:AMP:O2P	2.18	0.42
1:C:359:ARG:HD3	1:C:363:GLU:OE2	2.18	0.42
1:B:423:ASP:OD1	8:B:603:HOH:O	2.22	0.42
1:B:89:GLU:OE1	1:B:102:HIS:NE2	2.51	0.42

Continued on next page...

Continued from previous page...

Atom-1	Atom-2	Interatomic distance (Å)	Clash overlap (Å)
1:B:85:TRP:CE3	1:B:151:VAL:HG11	2.54	0.42
1:B:236:ASP:O	1:B:271:PRO:HD2	2.20	0.42
1:D:236:ASP:O	1:D:271:PRO:HD2	2.18	0.42
1:C:100:GLY:HA2	1:C:104:ARG:O	2.19	0.42
1:A:194:ARG:HB3	1:A:223:GLU:HB2	2.00	0.42
1:D:209:ILE:O	1:D:209:ILE:HG22	2.19	0.42
1:C:17:ARG:HB3	1:C:20:LEU:HD12	2.02	0.42
1:B:194:ARG:NH2	8:B:635:HOH:O	2.52	0.42
1:B:217:ALA:HB2	1:B:235:PHE:CD2	2.55	0.41
1:C:89:GLU:OE1	1:C:102:HIS:NE2	2.54	0.41
1:D:72:LYS:HG3	1:D:74:ARG:HD3	1.99	0.41
1:D:217:ALA:HB2	1:D:235:PHE:CD2	2.55	0.41
1:A:458:SER:O	1:A:459:THR:C	2.59	0.41
1:D:14:ALA:O	1:D:20:LEU:HD13	2.21	0.41
1:B:50:ARG:HD3	8:B:644:HOH:O	2.19	0.41
1:D:52:ARG:HD3	1:D:52:ARG:HA	1.78	0.41
1:D:217:ALA:HB2	1:D:235:PHE:CG	2.56	0.41
1:B:131:LEU:HD22	1:B:145:VAL:HG22	2.03	0.41
1:C:217:ALA:HB2	1:C:235:PHE:CD2	2.56	0.41
1:C:236:ASP:O	1:C:271:PRO:HD2	2.20	0.41
1:A:236:ASP:O	1:A:271:PRO:HD2	2.21	0.41
1:D:163:ASN:HB3	8:D:681:HOH:O	2.19	0.41
1:A:17:ARG:HB3	1:A:17:ARG:CZ	2.50	0.41
1:A:276:THR:N	8:A:622:HOH:O	2.51	0.41
1:B:175:GLU:HB2	8:B:604:HOH:O	2.21	0.41
1:B:228:LEU:O	1:B:232:VAL:HG23	2.21	0.41
1:C:228:LEU:O	1:C:232:VAL:HG23	2.21	0.41
1:C:290:ARG:HG2	1:D:277:GLN:OE1	2.21	0.41
1:D:89:GLU:OE1	1:D:102:HIS:NE2	2.54	0.41
1:D:445:VAL:HG12	1:D:446:VAL:N	2.36	0.41
1:B:372:ALA:HB3	1:B:380:VAL:HG22	2.03	0.40
1:A:92:ARG:HH12	1:A:142:VAL:HG22	1.86	0.40
1:A:438:ARG:NH1	8:A:602:HOH:O	2.14	0.40
1:B:382:ARG:HH22	3:B:502:G6P:H1	1.85	0.40
1:D:74:ARG:HH11	1:D:74:ARG:HB3	1.86	0.40
1:A:359:ARG:HH11	1:A:359:ARG:HB3	1.86	0.40
1:C:439:TYR:OH	8:C:602:HOH:O	2.11	0.40
1:A:254:VAL:N	1:A:255:PRO:CD	2.84	0.40

All (1) symmetry-related close contacts are listed below. The label for Atom-2 includes the symmetry operator and encoded unit-cell translations to be applied.

Atom-1	Atom-2	Interatomic distance (Å)	Clash overlap (Å)
1:A:134:ASP:OD1	1:C:56:ASP:OD2[3_444]	2.18	0.02

5.3 Torsion angles [i](#)

5.3.1 Protein backbone [i](#)

In the following table, the Percentiles column shows the percent Ramachandran outliers of the chain as a percentile score with respect to all X-ray entries followed by that with respect to entries of similar resolution.

The Analysed column shows the number of residues for which the backbone conformation was analysed, and the total number of residues.

Mol	Chain	Analysed	Favoured	Allowed	Outliers	Percentiles
1	A	469/475 (99%)	459 (98%)	8 (2%)	2 (0%)	34 37
1	B	469/475 (99%)	455 (97%)	12 (3%)	2 (0%)	34 37
1	C	469/475 (99%)	455 (97%)	12 (3%)	2 (0%)	34 37
1	D	469/475 (99%)	456 (97%)	11 (2%)	2 (0%)	34 37
All	All	1876/1900 (99%)	1825 (97%)	43 (2%)	8 (0%)	34 37

All (8) Ramachandran outliers are listed below:

Mol	Chain	Res	Type
1	A	387	HIS
1	B	387	HIS
1	C	387	HIS
1	A	276	THR
1	B	276	THR
1	C	276	THR
1	D	276	THR
1	D	387	HIS

5.3.2 Protein sidechains [i](#)

In the following table, the Percentiles column shows the percent sidechain outliers of the chain as a percentile score with respect to all X-ray entries followed by that with respect to entries of similar resolution.

The Analysed column shows the number of residues for which the sidechain conformation was analysed, and the total number of residues.

Mol	Chain	Analysed	Rotameric	Outliers	Percentiles	
1	A	379/381 (100%)	367 (97%)	12 (3%)	39	47
1	B	379/381 (100%)	367 (97%)	12 (3%)	39	47
1	C	379/381 (100%)	366 (97%)	13 (3%)	37	45
1	D	379/381 (100%)	366 (97%)	13 (3%)	37	45
All	All	1516/1524 (100%)	1466 (97%)	50 (3%)	38	46

All (50) residues with a non-rotameric sidechain are listed below:

Mol	Chain	Res	Type
1	A	17	ARG
1	A	18	ASP
1	A	106	SER
1	A	115	ASP
1	A	123	LEU
1	A	128	LYS
1	A	194	ARG
1	A	359	ARG
1	A	436	LEU
1	A	441	ARG
1	A	461	LEU
1	A	466	ARG
1	B	18	ASP
1	B	19	ASP
1	B	40	ASP
1	B	80	SER
1	B	106	SER
1	B	187	MET
1	B	194	ARG
1	B	320	LEU
1	B	441	ARG
1	B	444	LEU
1	B	461	LEU
1	B	466	ARG
1	C	18	ASP
1	C	42	ASP
1	C	80	SER
1	C	114	GLN
1	C	123	LEU
1	C	187	MET
1	C	194	ARG
1	C	359	ARG
1	C	368	LYS

Continued on next page...

Continued from previous page...

Mol	Chain	Res	Type
1	C	420	GLN
1	C	435	GLU
1	C	461	LEU
1	C	466	ARG
1	D	17	ARG
1	D	18	ASP
1	D	74	ARG
1	D	77	ARG
1	D	123	LEU
1	D	155	LYS
1	D	163	ASN
1	D	320	LEU
1	D	348	ARG
1	D	359	ARG
1	D	438	ARG
1	D	461	LEU
1	D	466	ARG

Sometimes sidechains can be flipped to improve hydrogen bonding and reduce clashes. All (6) such sidechains are listed below:

Mol	Chain	Res	Type
1	A	404	GLN
1	B	154	ASN
1	B	404	GLN
1	C	387	HIS
1	C	404	GLN
1	D	404	GLN

5.3.3 RNA [i](#)

There are no RNA molecules in this entry.

5.4 Non-standard residues in protein, DNA, RNA chains [i](#)

There are no non-standard protein/DNA/RNA residues in this entry.

5.5 Carbohydrates [i](#)

There are no monosaccharides in this entry.

5.6 Ligand geometry

Of 19 ligands modelled in this entry, 5 are monoatomic - leaving 14 for Mogul analysis.

In the following table, the Counts columns list the number of bonds (or angles) for which Mogul statistics could be retrieved, the number of bonds (or angles) that are observed in the model and the number of bonds (or angles) that are defined in the Chemical Component Dictionary. The Link column lists molecule types, if any, to which the group is linked. The Z score for a bond length (or angle) is the number of standard deviations the observed value is removed from the expected value. A bond length (or angle) with $|Z| > 2$ is considered an outlier worth inspection. RMSZ is the root-mean-square of all Z scores of the bond lengths (or angles).

Mol	Type	Chain	Res	Link	Bond lengths			Bond angles		
					Counts	RMSZ	# Z > 2	Counts	RMSZ	# Z > 2
3	G6P	D	502	-	16,16,16	0.66	0	24,24,24	1.55	2 (8%)
5	OXL	B	504	4	5,5,5	1.89	1 (20%)	6,6,6	1.05	0
5	OXL	A	504	4	5,5,5	1.98	1 (20%)	6,6,6	1.02	0
3	G6P	C	502	-	16,16,16	0.68	0	24,24,24	0.77	0
3	G6P	B	502	-	16,16,16	0.67	0	24,24,24	1.44	3 (12%)
3	G6P	A	502	-	16,16,16	0.62	0	24,24,24	1.53	3 (12%)
7	PO4	D	505	-	4,4,4	0.65	0	6,6,6	0.66	0
5	OXL	C	504	4	5,5,5	1.90	1 (20%)	6,6,6	0.91	0
5	OXL	D	504	4	5,5,5	1.86	2 (40%)	6,6,6	1.21	1 (16%)
2	AMP	B	501	-	22,25,25	0.91	0	25,38,38	1.25	3 (12%)
2	AMP	A	501	-	22,25,25	1.00	1 (4%)	25,38,38	1.15	2 (8%)
2	AMP	D	501	-	22,25,25	0.85	0	25,38,38	1.38	4 (16%)
7	PO4	C	505	-	4,4,4	0.64	0	6,6,6	0.71	0
2	AMP	C	501	-	22,25,25	0.92	2 (9%)	25,38,38	1.31	4 (16%)

In the following table, the Chirals column lists the number of chiral outliers, the number of chiral centers analysed, the number of these observed in the model and the number defined in the Chemical Component Dictionary. Similar counts are reported in the Torsion and Rings columns. '-' means no outliers of that kind were identified.

Mol	Type	Chain	Res	Link	Chirals	Torsions	Rings
3	G6P	D	502	-	-	0/6/26/26	0/1/1/1
5	OXL	B	504	4	-	0/4/4/4	-
5	OXL	A	504	4	-	0/4/4/4	-
3	G6P	C	502	-	-	0/6/26/26	0/1/1/1
3	G6P	B	502	-	-	0/6/26/26	0/1/1/1
3	G6P	A	502	-	-	0/6/26/26	0/1/1/1
5	OXL	C	504	4	-	1/4/4/4	-
5	OXL	D	504	4	-	0/4/4/4	-

Continued on next page...

Continued from previous page...

Mol	Type	Chain	Res	Link	Chirals	Torsions	Rings
2	AMP	B	501	-	-	0/6/26/26	0/3/3/3
2	AMP	A	501	-	-	0/6/26/26	0/3/3/3
2	AMP	D	501	-	-	0/6/26/26	0/3/3/3
2	AMP	C	501	-	-	1/6/26/26	0/3/3/3

All (8) bond length outliers are listed below:

Mol	Chain	Res	Type	Atoms	Z	Observed(Å)	Ideal(Å)
5	A	504	OXL	C2-C1	-3.42	1.44	1.54
5	B	504	OXL	C2-C1	-3.08	1.45	1.54
5	C	504	OXL	C2-C1	-2.98	1.46	1.54
5	D	504	OXL	C2-C1	-2.92	1.46	1.54
2	A	501	AMP	O4'-C1'	2.31	1.44	1.41
2	C	501	AMP	O4'-C1'	2.27	1.44	1.41
5	D	504	OXL	O4-C2	-2.08	1.24	1.30
2	C	501	AMP	C5-N7	-2.03	1.32	1.39

All (22) bond angle outliers are listed below:

Mol	Chain	Res	Type	Atoms	Z	Observed(°)	Ideal(°)
3	D	502	G6P	O5-C1-C2	4.57	118.44	110.28
3	A	502	G6P	C1-O5-C5	4.51	122.17	113.66
3	B	502	G6P	O5-C1-C2	4.46	118.23	110.28
3	A	502	G6P	O5-C1-C2	4.03	117.48	110.28
2	D	501	AMP	N3-C2-N1	-4.02	122.40	128.68
2	B	501	AMP	N3-C2-N1	-3.84	122.67	128.68
2	C	501	AMP	N3-C2-N1	-3.77	122.78	128.68
3	D	502	G6P	C1-O5-C5	3.70	120.64	113.66
3	B	502	G6P	C1-O5-C5	3.21	119.72	113.66
2	A	501	AMP	N3-C2-N1	-3.16	123.74	128.68
3	A	502	G6P	O5-C5-C4	2.70	114.60	109.69
2	D	501	AMP	C3'-C2'-C1'	2.64	104.95	100.98
2	C	501	AMP	C1'-N9-C4	-2.45	122.34	126.64
2	A	501	AMP	C3'-C2'-C1'	2.33	104.49	100.98
3	B	502	G6P	C1-C2-C3	2.29	115.06	110.31
2	B	501	AMP	C2-N1-C6	2.26	122.62	118.75
2	C	501	AMP	C2-N1-C6	2.24	122.58	118.75
2	C	501	AMP	C3'-C2'-C1'	2.24	104.34	100.98
2	D	501	AMP	N6-C6-N1	2.14	123.02	118.57
2	D	501	AMP	C2-N1-C6	2.12	122.39	118.75
5	D	504	OXL	O3-C1-C2	2.12	119.47	113.16
2	B	501	AMP	N6-C6-N1	2.01	122.75	118.57

There are no chirality outliers.

All (2) torsion outliers are listed below:

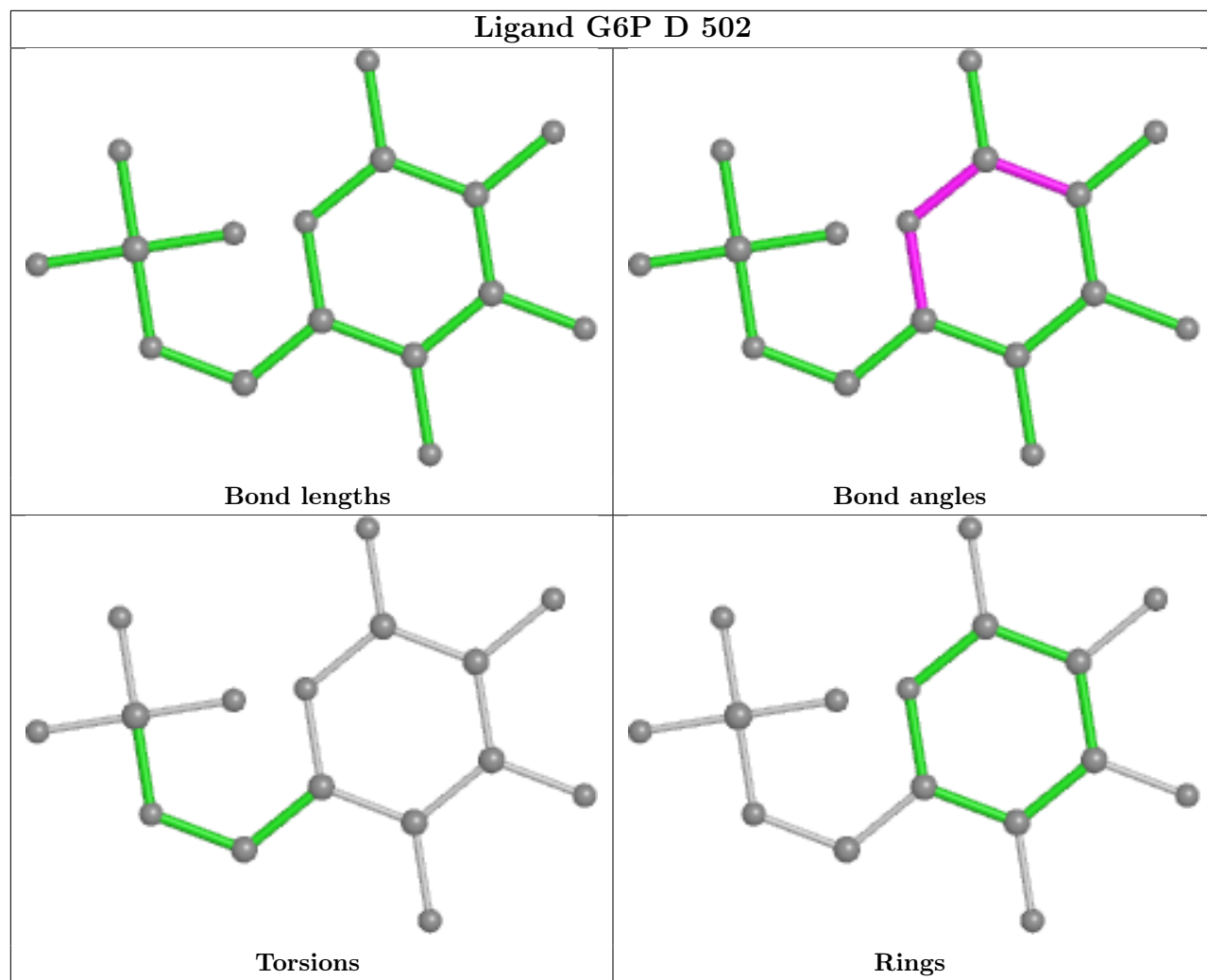
Mol	Chain	Res	Type	Atoms
2	C	501	AMP	C3'-C4'-C5'-O5'
5	C	504	OXL	O3-C1-C2-O4

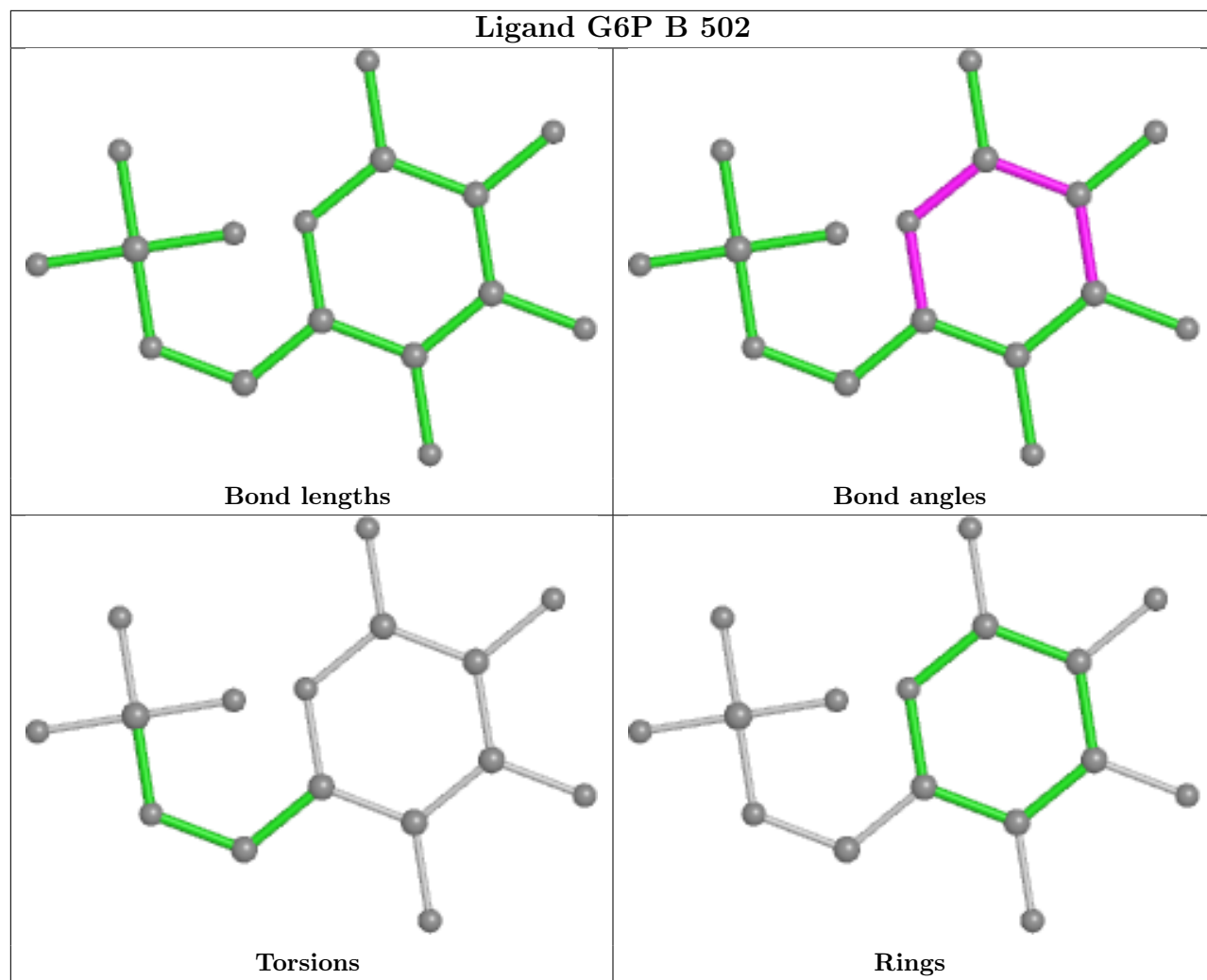
There are no ring outliers.

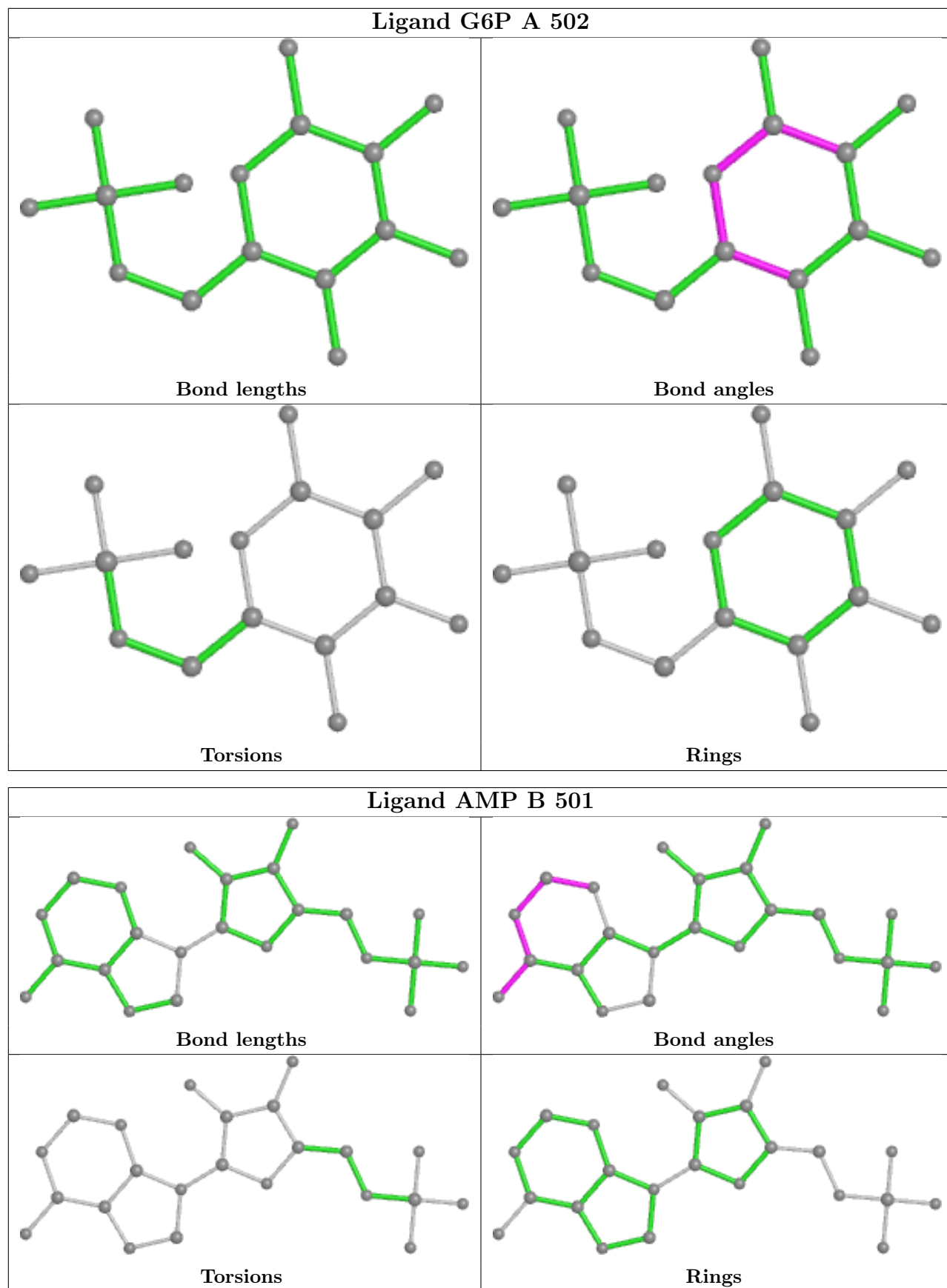
9 monomers are involved in 17 short contacts:

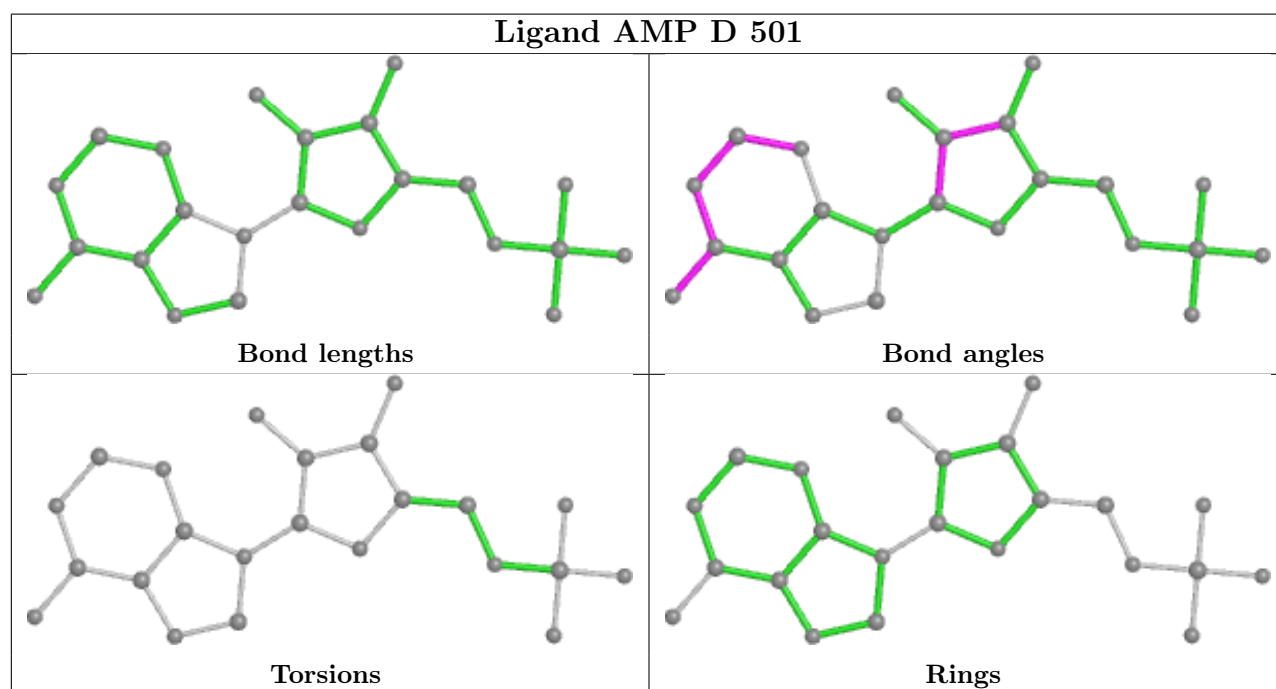
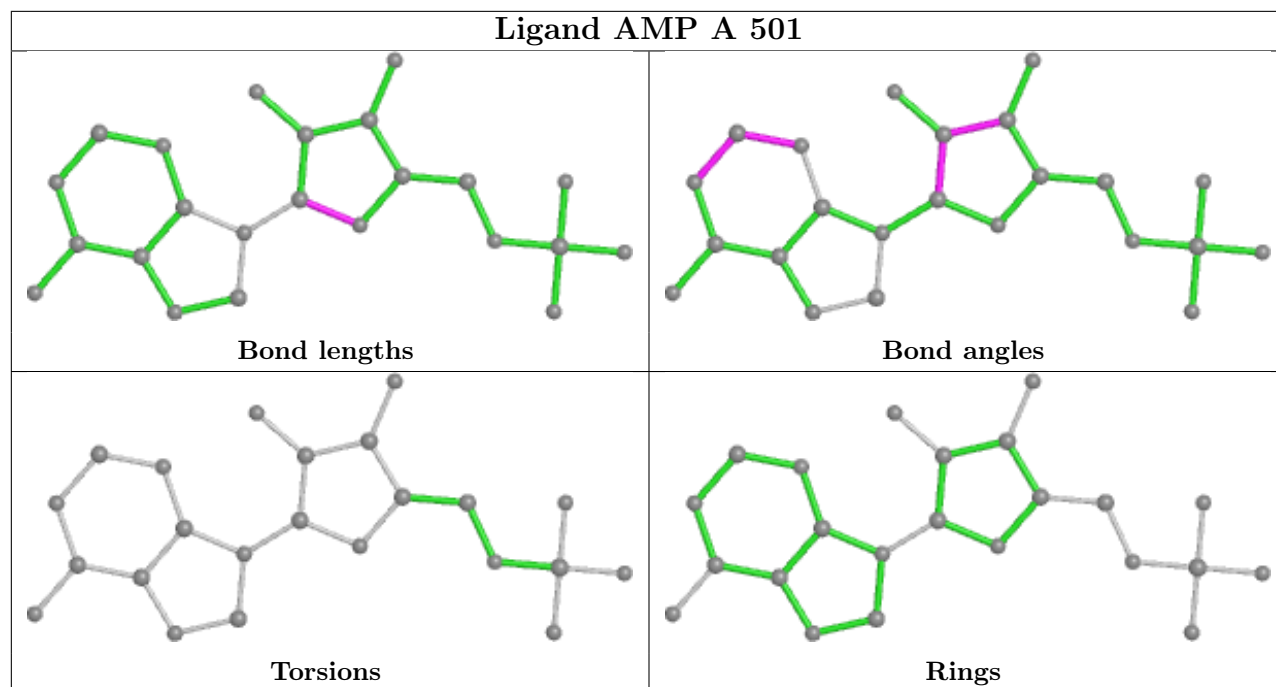
Mol	Chain	Res	Type	Clashes	Symm-Clashes
3	D	502	G6P	2	0
3	C	502	G6P	4	0
3	B	502	G6P	3	0
3	A	502	G6P	2	0
7	D	505	PO4	1	0
2	B	501	AMP	1	0
2	A	501	AMP	2	0
2	D	501	AMP	1	0
2	C	501	AMP	1	0

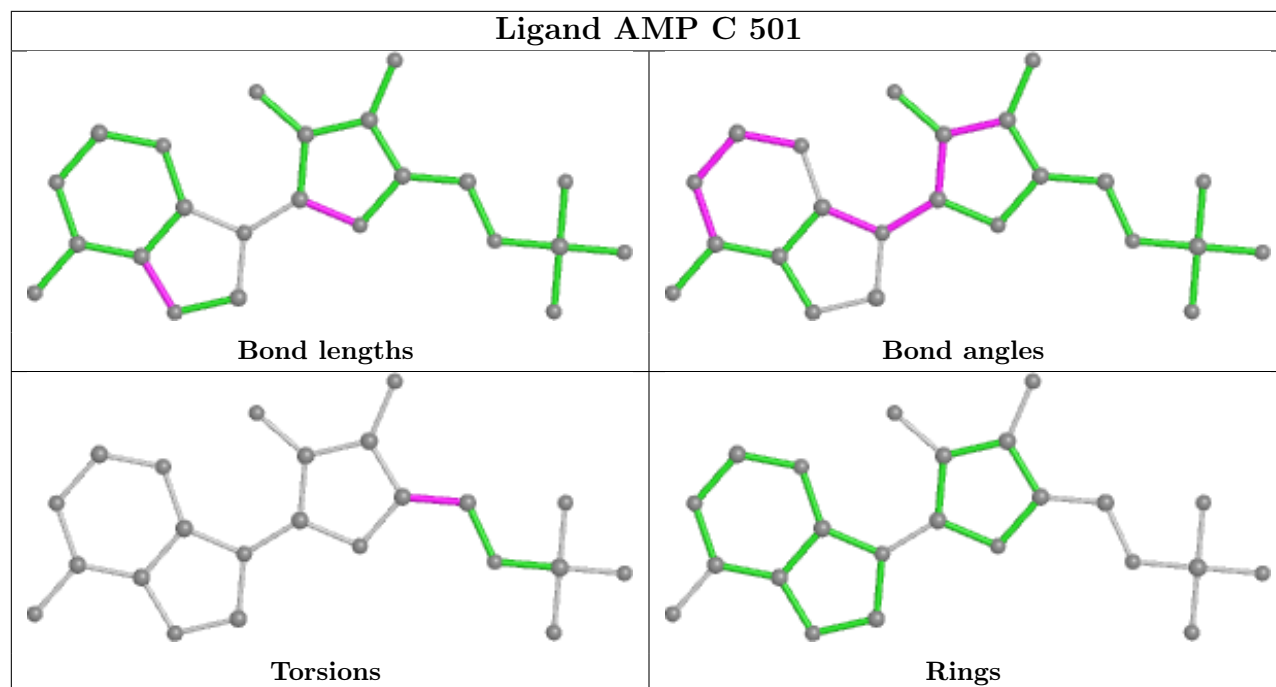
The following is a two-dimensional graphical depiction of Mogul quality analysis of bond lengths, bond angles, torsion angles, and ring geometry for all instances of the Ligand of Interest. In addition, ligands with molecular weight > 250 and outliers as shown on the validation Tables will also be included. For torsion angles, if less than 5% of the Mogul distribution of torsion angles is within 10 degrees of the torsion angle in question, then that torsion angle is considered an outlier. Any bond that is central to one or more torsion angles identified as an outlier by Mogul will be highlighted in the graph. For rings, the root-mean-square deviation (RMSD) between the ring in question and similar rings identified by Mogul is calculated over all ring torsion angles. If the average RMSD is greater than 60 degrees and the minimal RMSD between the ring in question and any Mogul-identified rings is also greater than 60 degrees, then that ring is considered an outlier. The outliers are highlighted in purple. The color gray indicates Mogul did not find sufficient equivalents in the CSD to analyse the geometry.











5.7 Other polymers [i](#)

There are no such residues in this entry.

5.8 Polymer linkage issues [i](#)

There are no chain breaks in this entry.

6 Fit of model and data [i](#)

6.1 Protein, DNA and RNA chains [i](#)

In the following table, the column labelled ‘#RSRZ> 2’ contains the number (and percentage) of RSRZ outliers, followed by percent RSRZ outliers for the chain as percentile scores relative to all X-ray entries and entries of similar resolution. The OWAB column contains the minimum, median, 95th percentile and maximum values of the occupancy-weighted average B-factor per residue. The column labelled ‘Q< 0.9’ lists the number of (and percentage) of residues with an average occupancy less than 0.9.

Mol	Chain	Analysed	<RSRZ>	#RSRZ>2	OWAB(Å ²)	Q<0.9
1	A	471/475 (99%)	-0.60	0 100 100	26, 34, 48, 62	0
1	B	471/475 (99%)	-0.61	0 100 100	26, 35, 46, 63	0
1	C	471/475 (99%)	-0.54	1 (0%) 95 96	26, 37, 56, 78	0
1	D	471/475 (99%)	-0.55	0 100 100	25, 36, 54, 71	0
All	All	1884/1900 (99%)	-0.57	1 (0%) 95 96	25, 36, 52, 78	0

All (1) RSRZ outliers are listed below:

Mol	Chain	Res	Type	RSRZ
1	C	82	ALA	2.2

6.2 Non-standard residues in protein, DNA, RNA chains [i](#)

There are no non-standard protein/DNA/RNA residues in this entry.

6.3 Carbohydrates [i](#)

There are no monosaccharides in this entry.

6.4 Ligands [i](#)

In the following table, the Atoms column lists the number of modelled atoms in the group and the number defined in the chemical component dictionary. The B-factors column lists the minimum, median, 95th percentile and maximum values of B factors of atoms in the group. The column labelled ‘Q< 0.9’ lists the number of atoms with occupancy less than 0.9.

Mol	Type	Chain	Res	Atoms	RSCC	RSR	B-factors(Å ²)	Q<0.9
4	MG	A	503	1/1	0.97	0.06	32,32,32,32	0

Continued on next page...

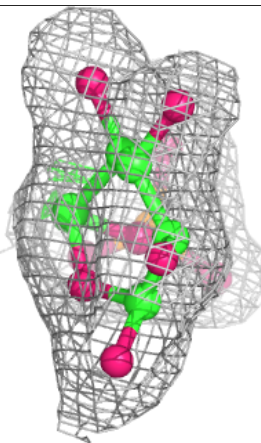
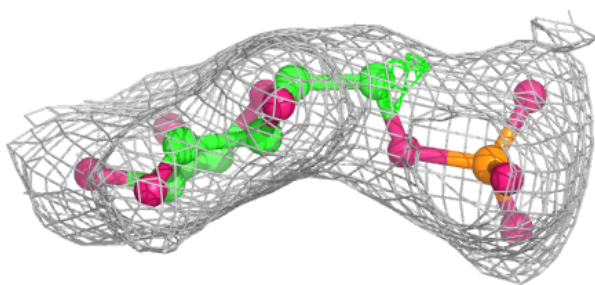
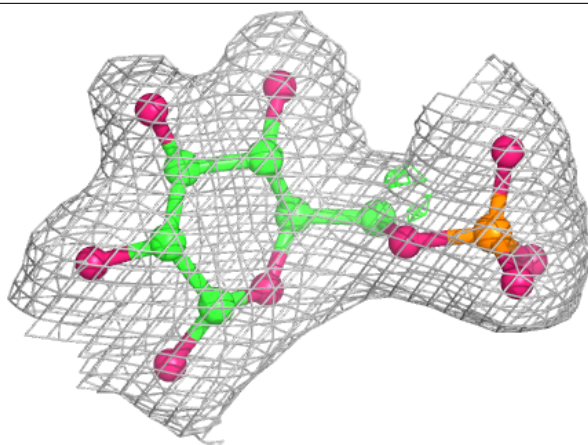
Continued from previous page...

Mol	Type	Chain	Res	Atoms	RSCC	RSR	B-factors(Å ²)	Q<0.9
4	MG	B	503	1/1	0.98	0.05	35,35,35,35	0
5	OXL	A	504	6/6	0.98	0.07	23,25,29,31	0
7	PO4	C	505	5/5	0.98	0.07	37,37,40,50	0
3	G6P	A	502	16/16	0.99	0.12	23,29,33,33	0
3	G6P	B	502	16/16	0.99	0.11	25,29,33,37	0
3	G6P	C	502	16/16	0.99	0.10	27,30,34,35	0
3	G6P	D	502	16/16	0.99	0.11	23,28,35,36	0
2	AMP	A	501	23/23	0.99	0.12	24,31,34,36	0
2	AMP	B	501	23/23	0.99	0.10	21,30,33,34	0
4	MG	C	503	1/1	0.99	0.06	32,32,32,32	0
4	MG	D	503	1/1	0.99	0.05	30,30,30,30	0
2	AMP	C	501	23/23	0.99	0.10	25,32,36,37	0
5	OXL	B	504	6/6	0.99	0.08	21,26,30,32	0
5	OXL	C	504	6/6	0.99	0.09	24,27,29,29	0
5	OXL	D	504	6/6	0.99	0.07	24,29,29,30	0
2	AMP	D	501	23/23	0.99	0.10	23,31,36,40	0
7	PO4	D	505	5/5	0.99	0.06	33,34,45,48	0
6	K	B	505	1/1	1.00	0.06	37,37,37,37	0

The following is a graphical depiction of the model fit to experimental electron density of all instances of the Ligand of Interest. In addition, ligands with molecular weight > 250 and outliers as shown on the geometry validation Tables will also be included. Each fit is shown from different orientation to approximate a three-dimensional view.

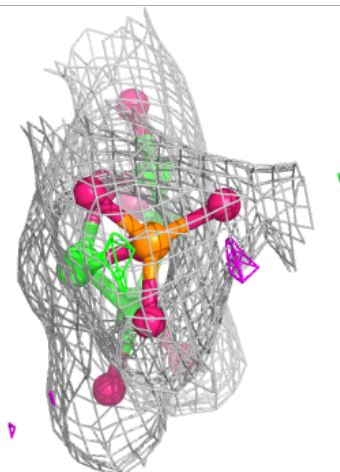
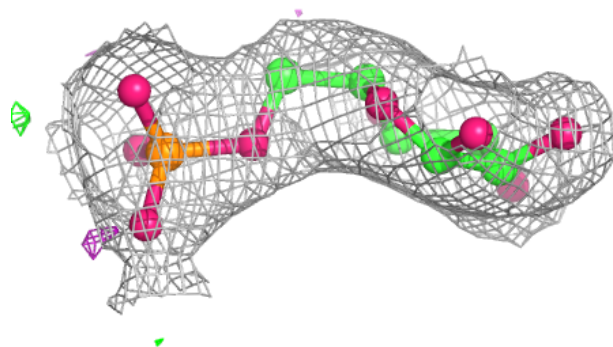
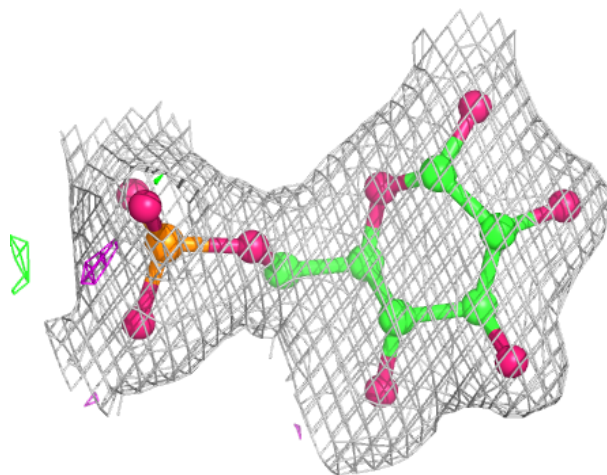
Electron density around G6P A 502:

$2mF_o-DF_c$ (at 0.7 rmsd) in gray
 mF_o-DF_c (at 3 rmsd) in purple (negative)
and green (positive)



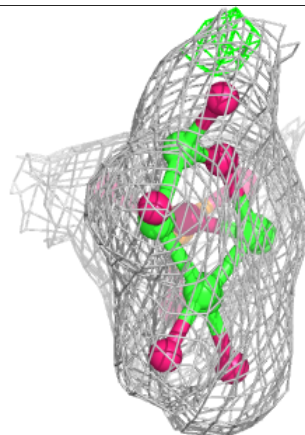
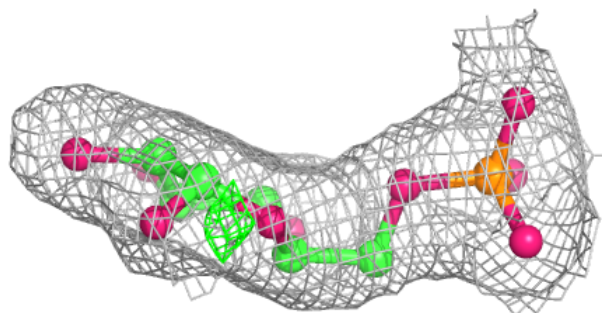
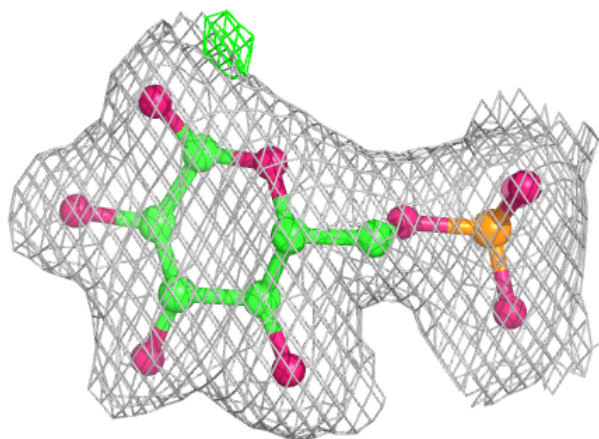
Electron density around G6P B 502:

$2mF_o-DF_c$ (at 0.7 rmsd) in gray
 mF_o-DF_c (at 3 rmsd) in purple (negative)
and green (positive)

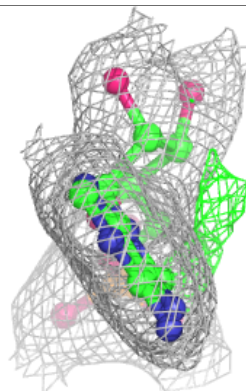
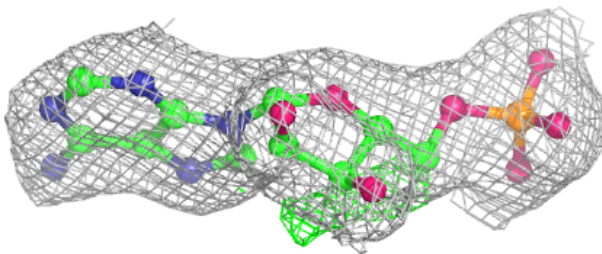
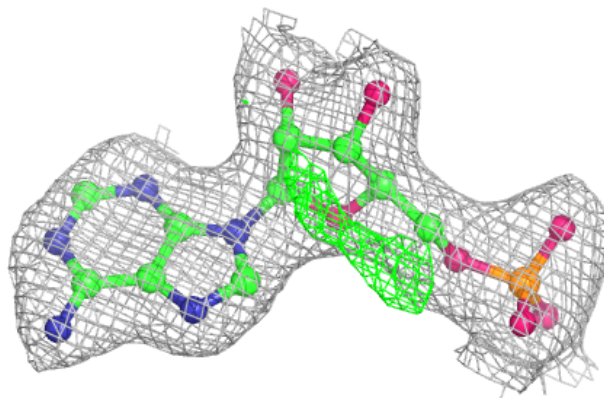


Electron density around G6P D 502:

$2mF_o-DF_c$ (at 0.7 rmsd) in gray
 mF_o-DF_c (at 3 rmsd) in purple (negative)
and green (positive)

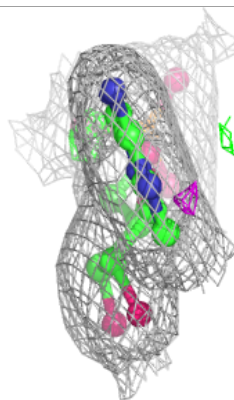
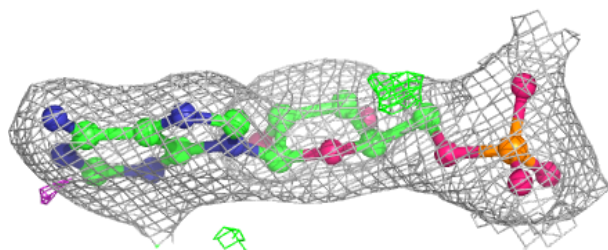
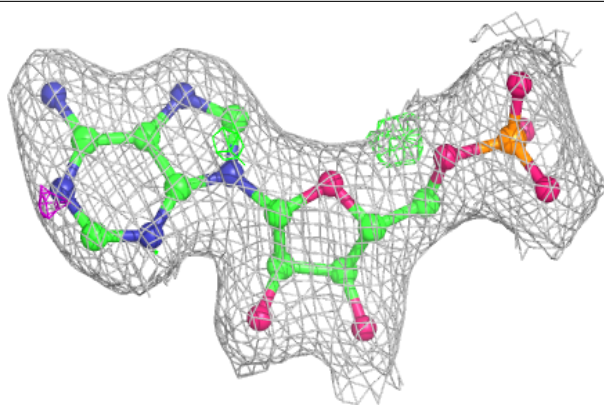
**Electron density around AMP A 501:**

$2mF_o-DF_c$ (at 0.7 rmsd) in gray
 mF_o-DF_c (at 3 rmsd) in purple (negative)
and green (positive)

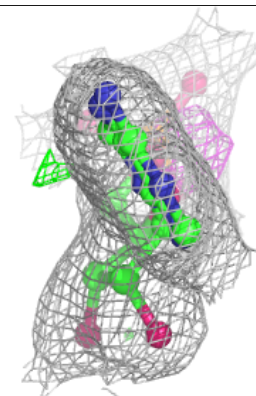
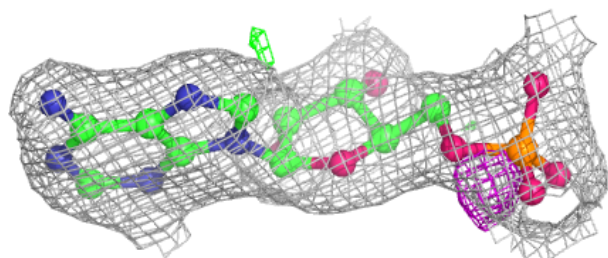
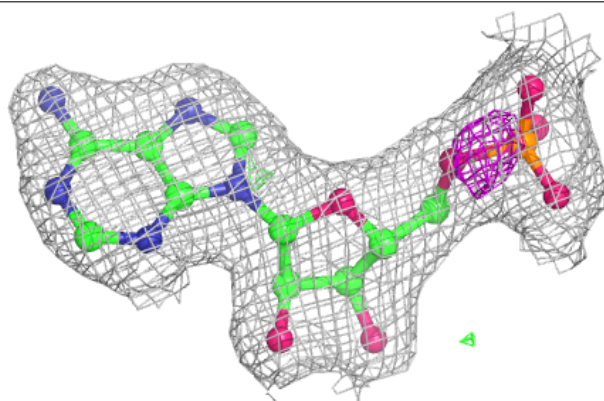


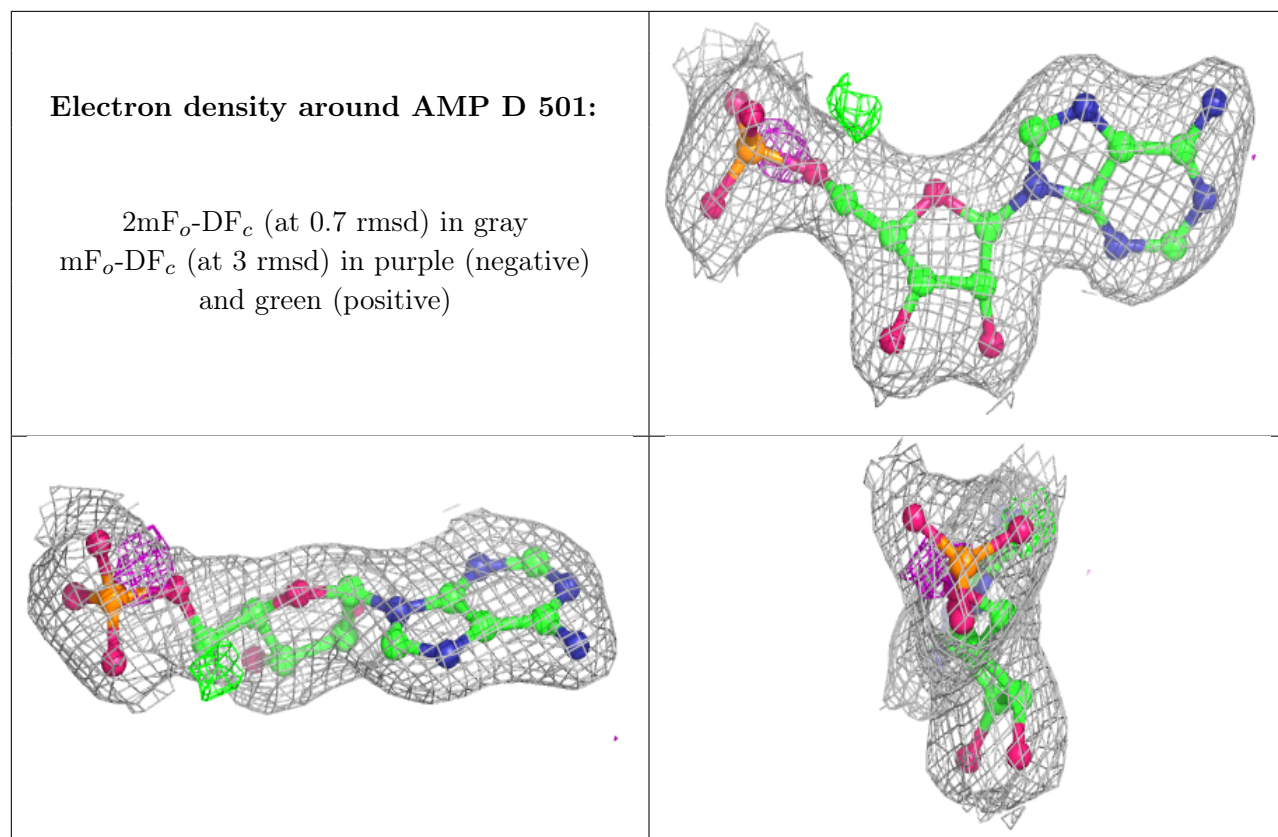
Electron density around AMP B 501:

$2mF_o-DF_c$ (at 0.7 rmsd) in gray
 mF_o-DF_c (at 3 rmsd) in purple (negative)
and green (positive)

**Electron density around AMP C 501:**

$2mF_o-DF_c$ (at 0.7 rmsd) in gray
 mF_o-DF_c (at 3 rmsd) in purple (negative)
and green (positive)





6.5 Other polymers [i](#)

There are no such residues in this entry.