



Full wwPDB X-ray Structure Validation Report ⓘ

May 14, 2020 – 10:58 pm BST

PDB ID : 1W61
Title : proline racemase in complex with 2 molecules of pyrrole-2-carboxylic acid (holo form)
Authors : Buschiazzo, A.; Alzari, P.
Deposited on : 2004-08-11
Resolution : 2.10 Å(reported)

This is a Full wwPDB X-ray Structure Validation Report for a publicly released PDB entry.

We welcome your comments at validation@mail.wwpdb.org

A user guide is available at

<https://www.wwpdb.org/validation/2017/XrayValidationReportHelp>

with specific help available everywhere you see the ⓘ symbol.

The following versions of software and data (see [references ⓘ](#)) were used in the production of this report:

MolProbity : 4.02b-467
Mogul : 1.8.5 (274361), CSD as541be (2020)
Xtriage (Phenix) : 1.13
EDS : 2.11
Percentile statistics : 20191225.v01 (using entries in the PDB archive December 25th 2019)
Refmac : 5.8.0158
CCP4 : 7.0.044 (Gargrove)
Ideal geometry (proteins) : Engh & Huber (2001)
Ideal geometry (DNA, RNA) : Parkinson et al. (1996)
Validation Pipeline (wwPDB-VP) : 2.11

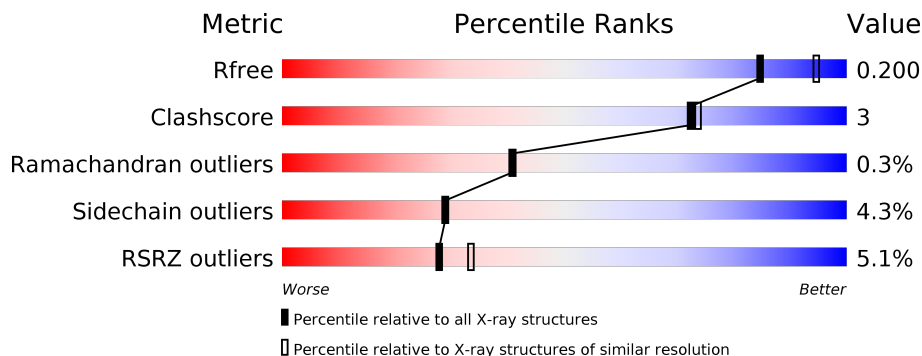
1 Overall quality at a glance i

The following experimental techniques were used to determine the structure:

X-RAY DIFFRACTION

The reported resolution of this entry is 2.10 Å.

Percentile scores (ranging between 0-100) for global validation metrics of the entry are shown in the following graphic. The table shows the number of entries on which the scores are based.



Metric	Whole archive (#Entries)	Similar resolution (#Entries, resolution range(Å))
R_{free}	130704	5197 (2.10-2.10)
Clashscore	141614	5710 (2.10-2.10)
Ramachandran outliers	138981	5647 (2.10-2.10)
Sidechain outliers	138945	5648 (2.10-2.10)
RSRZ outliers	127900	5083 (2.10-2.10)

The table below summarises the geometric issues observed across the polymeric chains and their fit to the electron density. The red, orange, yellow and green segments on the lower bar indicate the fraction of residues that contain outliers for ≥ 3 , 2, 1 and 0 types of geometric quality criteria respectively. A grey segment represents the fraction of residues that are not modelled. The numeric value for each fraction is indicated below the corresponding segment, with a dot representing fractions $\leq 5\%$. The upper red bar (where present) indicates the fraction of residues that have poor fit to the electron density. The numeric value is given above the bar.

Mol	Chain	Length	Quality of chain
1	A	414	<div style="display: flex; align-items: center;"> <div style="width: 4%; height: 10px; background-color: red; margin-right: 5px;"></div> <div style="width: 76%; height: 10px; background-color: green; margin-right: 5px;"></div> <div style="width: 8%; height: 10px; background-color: yellow; margin-right: 5px;"></div> <div style="width: 15%; height: 10px; background-color: grey;"></div> </div>
1	B	414	<div style="display: flex; align-items: center;"> <div style="width: 4%; height: 10px; background-color: red; margin-right: 5px;"></div> <div style="width: 77%; height: 10px; background-color: green; margin-right: 5px;"></div> <div style="width: 9%; height: 10px; background-color: yellow; margin-right: 5px;"></div> <div style="width: 14%; height: 10px; background-color: grey;"></div> </div>

2 Entry composition [i](#)

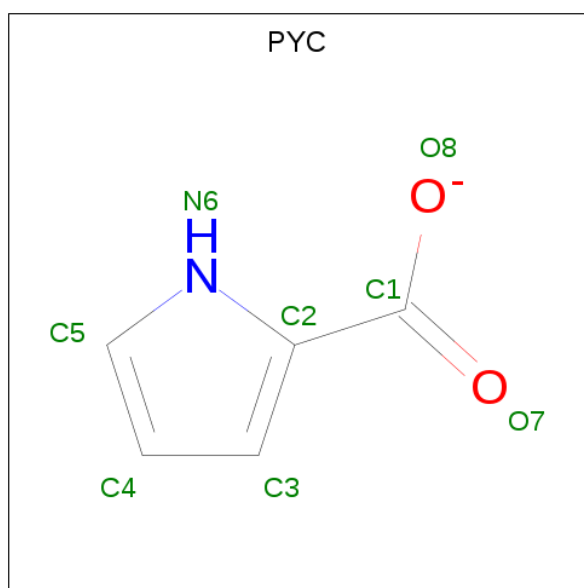
There are 3 unique types of molecules in this entry. The entry contains 5748 atoms, of which 0 are hydrogens and 0 are deuteriums.

In the tables below, the ZeroOcc column contains the number of atoms modelled with zero occupancy, the AltConf column contains the number of residues with at least one atom in alternate conformation and the Trace column contains the number of residues modelled with at most 2 atoms.

- Molecule 1 is a protein called B-CELL MITOGEN.

Mol	Chain	Residues	Atoms					ZeroOcc	AltConf	Trace
			Total	C	N	O	S			
1	A	353	Total 2670	C 1692	N 452	O 511	S 15	0	0	0
1	B	357	Total 2704	C 1715	N 457	O 517	S 15	0	0	0

- Molecule 2 is PYRROLE-2-CARBOXYLATE (three-letter code: PYC) (formula: $C_5H_4NO_2$).



Mol	Chain	Residues	Atoms				ZeroOcc	AltConf
			Total	C	N	O		
2	A	1	Total 8	C 5	N 1	O 2	0	0
2	B	1	Total 8	C 5	N 1	O 2	0	0

- Molecule 3 is water.

Mol	Chain	Residues	Atoms		ZeroOcc	AltConf
3	A	183	Total 183	O 183	0	0
3	B	175	Total 175	O 175	0	0

4 Data and refinement statistics

Property	Value	Source
Space group	C 1 2 1	Depositor
Cell constants a, b, c, α , β , γ	131.15Å 91.21Å 85.98Å 90.00° 126.52° 90.00°	Depositor
Resolution (Å)	30.00 – 2.10 29.21 – 2.10	Depositor EDS
% Data completeness (in resolution range)	98.8 (30.00-2.10) 98.8 (29.21-2.10)	Depositor EDS
R_{merge}	0.07	Depositor
R_{sym}	(Not available)	Depositor
$\langle I/\sigma(I) \rangle$ ¹	6.00 (at 2.10Å)	Xtrriage
Refinement program	REFMAC 5.2.0003	Depositor
R, R_{free}	0.148 , 0.193 0.161 , 0.200	Depositor DCC
R_{free} test set	2331 reflections (4.96%)	wwPDB-VP
Wilson B-factor (Å ²)	22.2	Xtrriage
Anisotropy	0.187	Xtrriage
Bulk solvent k_{sol} (e/Å ³), B_{sol} (Å ²)	0.36 , 51.5	EDS
L-test for twinning ²	$\langle L \rangle = 0.49$, $\langle L^2 \rangle = 0.32$	Xtrriage
Estimated twinning fraction	No twinning to report.	Xtrriage
F_o, F_c correlation	0.96	EDS
Total number of atoms	5748	wwPDB-VP
Average B, all atoms (Å ²)	24.0	wwPDB-VP

Xtrriage's analysis on translational NCS is as follows: *The largest off-origin peak in the Patterson function is 5.50% of the height of the origin peak. No significant pseudotranslation is detected.*

¹Intensities estimated from amplitudes.

²Theoretical values of $\langle |L| \rangle$, $\langle L^2 \rangle$ for acentric reflections are 0.5, 0.333 respectively for untwinned datasets, and 0.375, 0.2 for perfectly twinned datasets.

5 Model quality [i](#)

5.1 Standard geometry [i](#)

Bond lengths and bond angles in the following residue types are not validated in this section: PYC

The Z score for a bond length (or angle) is the number of standard deviations the observed value is removed from the expected value. A bond length (or angle) with $|Z| > 5$ is considered an outlier worth inspection. RMSZ is the root-mean-square of all Z scores of the bond lengths (or angles).

Mol	Chain	Bond lengths		Bond angles	
		RMSZ	# Z >5	RMSZ	# Z >5
1	A	0.88	1/2724 (0.0%)	0.94	7/3700 (0.2%)
1	B	0.93	2/2760 (0.1%)	0.95	9/3750 (0.2%)
All	All	0.90	3/5484 (0.1%)	0.95	16/7450 (0.2%)

All (3) bond length outliers are listed below:

Mol	Chain	Res	Type	Atoms	Z	Observed(Å)	Ideal(Å)
1	B	56	GLU	CD-OE2	5.11	1.31	1.25
1	B	51	MET	CG-SD	-5.10	1.67	1.81
1	A	44	LYS	CG-CD	5.08	1.69	1.52

All (16) bond angle outliers are listed below:

Mol	Chain	Res	Type	Atoms	Z	Observed(°)	Ideal(°)
1	B	89	ARG	NE-CZ-NH1	11.87	126.24	120.30
1	B	89	ARG	NE-CZ-NH2	-10.75	114.92	120.30
1	A	115	ASP	CB-CG-OD2	8.40	125.86	118.30
1	B	231	ASP	CB-CG-OD2	6.79	124.41	118.30
1	B	115	ASP	CB-CG-OD2	6.28	123.95	118.30
1	B	353	ASP	CB-CG-OD2	6.09	123.78	118.30
1	B	296	ASP	CB-CG-OD1	5.81	123.53	118.30
1	A	329	LEU	CA-CB-CG	5.66	128.32	115.30
1	A	44	LYS	N-CA-C	-5.53	96.06	111.00
1	B	51	MET	CA-CB-CG	-5.41	104.10	113.30
1	B	50	ASP	CB-CG-OD1	5.27	123.04	118.30
1	B	85	ASP	CB-CG-OD2	5.21	122.99	118.30
1	A	44	LYS	CA-CB-CG	5.19	124.81	113.40
1	A	317	LEU	CA-CB-CG	5.06	126.93	115.30
1	A	50	ASP	CB-CG-OD1	5.01	122.81	118.30
1	A	378	LEU	CB-CG-CD1	5.00	119.51	111.00

There are no chirality outliers.

There are no planarity outliers.

5.2 Too-close contacts

In the following table, the Non-H and H(model) columns list the number of non-hydrogen atoms and hydrogen atoms in the chain respectively. The H(added) column lists the number of hydrogen atoms added and optimized by MolProbity. The Clashes column lists the number of clashes within the asymmetric unit, whereas Symm-Clashes lists symmetry related clashes.

Mol	Chain	Non-H	H(model)	H(added)	Clashes	Symm-Clashes
1	A	2670	0	2641	20	0
1	B	2704	0	2672	19	0
2	A	8	0	4	0	0
2	B	8	0	4	0	0
3	A	183	0	0	1	0
3	B	175	0	0	1	0
All	All	5748	0	5321	36	0

The all-atom clashscore is defined as the number of clashes found per 1000 atoms (including hydrogen atoms). The all-atom clashscore for this structure is 3.

All (36) close contacts within the same asymmetric unit are listed below, sorted by their clash magnitude.

Atom-1	Atom-2	Interatomic distance (Å)	Clash overlap (Å)
1:A:48:CYS:SG	1:A:377:MET:CE	2.69	0.81
1:A:247:LEU:O	1:A:251:ILE:HG23	1.97	0.64
1:A:391:LEU:HD21	1:B:329:LEU:HD11	1.83	0.59
1:A:48:CYS:SG	1:A:377:MET:HE2	2.41	0.58
1:B:236:ASN:ND2	1:B:239:ARG:NH1	2.52	0.58
1:A:248:ARG:O	1:A:251:ILE:HD13	2.04	0.57
1:B:297:ARG:HB3	1:B:329:LEU:HD22	1.86	0.56
1:A:352:LYS:NZ	3:A:2156:HOH:O	2.39	0.55
1:B:236:ASN:ND2	1:B:239:ARG:HH11	2.03	0.55
1:A:251:ILE:HD11	1:A:268:VAL:HB	1.88	0.54
1:A:391:LEU:HD21	1:B:329:LEU:CD1	2.37	0.54
1:A:393:GLN:OE1	1:A:393:GLN:N	2.41	0.52
1:B:51:MET:SD	1:B:140:ALA:HB2	2.51	0.51
1:A:48:CYS:SG	1:A:377:MET:HE1	2.50	0.51
1:B:368:LYS:HE3	1:B:370:PHE:CZ	2.46	0.50
1:A:224:PRO:HB2	1:A:226:GLU:HG2	1.92	0.50
1:B:197:ASP:HB3	1:B:210:ARG:NH2	2.27	0.50

Continued on next page...

Continued from previous page...

Atom-1	Atom-2	Interatomic distance (Å)	Clash overlap (Å)
1:B:65:LEU:HD11	1:B:105:PHE:HD2	1.77	0.50
1:A:44:LYS:HB3	1:A:379:PHE:HB2	1.93	0.49
1:A:259:HIS:CE1	1:A:261:GLN:HE21	2.32	0.48
1:B:77:LYS:HE3	3:B:2021:HOH:O	2.14	0.47
1:B:65:LEU:HD11	1:B:105:PHE:CD2	2.51	0.46
1:A:235:GLN:CD	1:A:235:GLN:H	2.17	0.46
1:A:155:ASN:ND2	1:A:172:HIS:ND1	2.64	0.46
1:A:368:LYS:HE3	1:A:370:PHE:CZ	2.51	0.45
1:B:68:ILE:O	1:B:76:LYS:NZ	2.49	0.45
1:A:233:SER:HB2	1:A:235:GLN:OE1	2.16	0.44
1:B:236:ASN:HD21	1:B:239:ARG:NH1	2.15	0.43
1:B:225:ALA:HB1	1:B:230:ILE:O	2.19	0.43
1:A:371:ILE:HG22	1:B:378:LEU:HD12	1.99	0.43
1:B:266:ASN:C	1:B:266:ASN:HD22	2.23	0.42
1:A:259:HIS:HE1	1:A:261:GLN:HE21	1.68	0.41
1:B:94:GLU:O	1:B:388:GLY:HA2	2.20	0.41
1:A:266:ASN:HD22	1:A:266:ASN:C	2.24	0.41
1:B:51:MET:HG2	1:B:371:ILE:HA	2.02	0.40
1:B:77:LYS:NZ	1:B:128:ASN:OD1	2.53	0.40

There are no symmetry-related clashes.

5.3 Torsion angles [\(i\)](#)

5.3.1 Protein backbone [\(i\)](#)

In the following table, the Percentiles column shows the percent Ramachandran outliers of the chain as a percentile score with respect to all X-ray entries followed by that with respect to entries of similar resolution.

The Analysed column shows the number of residues for which the backbone conformation was analysed, and the total number of residues.

Mol	Chain	Analysed	Favoured	Allowed	Outliers	Percentiles	
1	A	351/414 (85%)	344 (98%)	6 (2%)	1 (0%)	41	41
1	B	355/414 (86%)	347 (98%)	7 (2%)	1 (0%)	41	41
All	All	706/828 (85%)	691 (98%)	13 (2%)	2 (0%)	41	41

All (2) Ramachandran outliers are listed below:

Mol	Chain	Res	Type
1	B	175	SER
1	A	175	SER

5.3.2 Protein sidechains [i](#)

In the following table, the Percentiles column shows the percent sidechain outliers of the chain as a percentile score with respect to all X-ray entries followed by that with respect to entries of similar resolution.

The Analysed column shows the number of residues for which the sidechain conformation was analysed, and the total number of residues.

Mol	Chain	Analysed	Rotameric	Outliers	Percentiles	
1	A	288/347 (83%)	272 (94%)	16 (6%)	21	18
1	B	292/347 (84%)	283 (97%)	9 (3%)	40	43
All	All	580/694 (84%)	555 (96%)	25 (4%)	29	29

All (25) residues with a non-rotameric sidechain are listed below:

Mol	Chain	Res	Type
1	A	73	MET
1	A	129	MET
1	A	148	SER
1	A	166	LEU
1	A	175	SER
1	A	209	VAL
1	A	251	ILE
1	A	261	GLN
1	A	266	ASN
1	A	318	ARG
1	A	325	TYR
1	A	328	ILE
1	A	347	LYS
1	A	355	GLU
1	A	377	MET
1	A	393	GLN
1	B	129	MET
1	B	174	GLN
1	B	199	VAL
1	B	209	VAL
1	B	226	GLU
1	B	261	GLN

Continued on next page...

Continued from previous page...

Mol	Chain	Res	Type
1	B	266	ASN
1	B	325	TYR
1	B	391	LEU

Some sidechains can be flipped to improve hydrogen bonding and reduce clashes. All (14) such sidechains are listed below:

Mol	Chain	Res	Type
1	A	133	ASN
1	A	155	ASN
1	A	195	GLN
1	A	227	GLN
1	A	236	ASN
1	A	261	GLN
1	A	266	ASN
1	A	387	ASN
1	B	155	ASN
1	B	195	GLN
1	B	236	ASN
1	B	261	GLN
1	B	266	ASN
1	B	387	ASN

5.3.3 RNA [i](#)

There are no RNA molecules in this entry.

5.4 Non-standard residues in protein, DNA, RNA chains [i](#)

There are no non-standard protein/DNA/RNA residues in this entry.

5.5 Carbohydrates [i](#)

There are no carbohydrates in this entry.

5.6 Ligand geometry [i](#)

2 ligands are modelled in this entry.

In the following table, the Counts columns list the number of bonds (or angles) for which Mogul statistics could be retrieved, the number of bonds (or angles) that are observed in the model and the number of bonds (or angles) that are defined in the Chemical Component Dictionary. The Link column lists molecule types, if any, to which the group is linked. The Z score for a bond length (or angle) is the number of standard deviations the observed value is removed from the expected value. A bond length (or angle) with $|Z| > 2$ is considered an outlier worth inspection. RMSZ is the root-mean-square of all Z scores of the bond lengths (or angles).

Mol	Type	Chain	Res	Link	Bond lengths			Bond angles		
					Counts	RMSZ	$\# Z > 2$	Counts	RMSZ	$\# Z > 2$
2	PYC	A	700	-	5,8,8	0.50	0	4,10,10	1.29	1 (25%)
2	PYC	B	700	-	5,8,8	0.89	0	4,10,10	1.19	0

In the following table, the Chirals column lists the number of chiral outliers, the number of chiral centers analysed, the number of these observed in the model and the number defined in the Chemical Component Dictionary. Similar counts are reported in the Torsion and Rings columns. '-' means no outliers of that kind were identified.

Mol	Type	Chain	Res	Link	Chirals	Torsions	Rings
2	PYC	A	700	-	-	0/0/4/4	0/1/1/1
2	PYC	B	700	-	-	0/0/4/4	0/1/1/1

There are no bond length outliers.

All (1) bond angle outliers are listed below:

Mol	Chain	Res	Type	Atoms	Z	Observed(°)	Ideal(°)
2	A	700	PYC	C4-C3-C2	-2.00	105.37	107.02

There are no chirality outliers.

There are no torsion outliers.

There are no ring outliers.

No monomer is involved in short contacts.

5.7 Other polymers [i](#)

There are no such residues in this entry.

5.8 Polymer linkage issues [i](#)

There are no chain breaks in this entry.

6 Fit of model and data

6.1 Protein, DNA and RNA chains

In the following table, the column labelled ‘#RSRZ> 2’ contains the number (and percentage) of RSRZ outliers, followed by percent RSRZ outliers for the chain as percentile scores relative to all X-ray entries and entries of similar resolution. The OWAB column contains the minimum, median, 95th percentile and maximum values of the occupancy-weighted average B-factor per residue. The column labelled ‘Q< 0.9’ lists the number of (and percentage) of residues with an average occupancy less than 0.9.

Mol	Chain	Analysed	<RSRZ>	#RSRZ>2	OWAB(Å ²)	Q<0.9
1	A	353/414 (85%)	-0.01	18 (5%) 28 33	14, 22, 39, 57	0
1	B	357/414 (86%)	-0.09	18 (5%) 28 34	13, 23, 40, 50	0
All	All	710/828 (85%)	-0.05	36 (5%) 28 33	13, 23, 40, 57	0

All (36) RSRZ outliers are listed below:

Mol	Chain	Res	Type	RSRZ
1	B	176	GLY	6.1
1	B	42	PHE	4.4
1	A	394	TYR	4.4
1	A	42	PHE	4.4
1	A	175	SER	4.4
1	A	176	GLY	4.1
1	B	175	SER	4.0
1	B	174	GLN	3.8
1	B	177	THR	3.7
1	A	204	LYS	3.7
1	A	177	THR	3.5
1	A	151	ALA	3.5
1	B	151	ALA	3.3
1	A	150	PRO	3.1
1	B	178	GLU	2.9
1	A	203	PRO	2.9
1	A	393	GLN	2.8
1	A	44	LYS	2.7
1	A	174	GLN	2.7
1	B	150	PRO	2.7
1	A	178	GLU	2.5
1	B	153	ALA	2.5
1	B	154	THR	2.5
1	A	43	LYS	2.5

Continued on next page...

Continued from previous page...

Mol	Chain	Res	Type	RSRZ
1	A	180	GLU	2.4
1	B	353	ASP	2.4
1	B	152	LYS	2.4
1	A	152	LYS	2.2
1	A	112	GLU	2.2
1	B	205	PRO	2.2
1	B	179	SER	2.2
1	B	398	SER	2.2
1	B	356	GLU	2.1
1	A	280	PRO	2.1
1	B	204	LYS	2.1
1	B	149	VAL	2.0

6.2 Non-standard residues in protein, DNA, RNA chains [i](#)

There are no non-standard protein/DNA/RNA residues in this entry.

6.3 Carbohydrates [i](#)

There are no carbohydrates in this entry.

6.4 Ligands [i](#)

In the following table, the Atoms column lists the number of modelled atoms in the group and the number defined in the chemical component dictionary. The B-factors column lists the minimum, median, 95th percentile and maximum values of B factors of atoms in the group. The column labelled 'Q< 0.9' lists the number of atoms with occupancy less than 0.9.

Mol	Type	Chain	Res	Atoms	RSCC	RSR	B-factors(Å ²)	Q<0.9
2	PYC	A	700	8/8	0.98	0.12	14,17,19,19	0
2	PYC	B	700	8/8	0.99	0.09	18,22,23,24	0

6.5 Other polymers [i](#)

There are no such residues in this entry.