



# Full wwPDB X-ray Structure Validation Report ⓘ

Jun 3, 2024 – 03:18 PM JST

PDB ID : 8W53  
Title : Crystal structure of LbUGT in complex with UDP  
Authors : Hu, D.; Wang, G.Q.  
Deposited on : 2023-08-25  
Resolution : 2.43 Å(reported)

This is a Full wwPDB X-ray Structure Validation Report for a publicly released PDB entry.

We welcome your comments at [validation@mail.wwpdb.org](mailto:validation@mail.wwpdb.org)

A user guide is available at

<https://www.wwpdb.org/validation/2017/XrayValidationReportHelp>

with specific help available everywhere you see the ⓘ symbol.

The types of validation reports are described at

<http://www.wwpdb.org/validation/2017/FAQs#types>.

---

The following versions of software and data (see [references ⓘ](#)) were used in the production of this report:

MolProbity : 4.02b-467  
Mogul : 1.8.5 (274361), CSD as541be (2020)  
Xtriage (Phenix) : 1.13  
EDS : 2.36.2  
buster-report : 1.1.7 (2018)  
Percentile statistics : 20191225.v01 (using entries in the PDB archive December 25th 2019)  
Refmac : 5.8.0158  
CCP4 : 7.0.044 (Gargrove)  
Ideal geometry (proteins) : Engh & Huber (2001)  
Ideal geometry (DNA, RNA) : Parkinson et al. (1996)  
Validation Pipeline (wwPDB-VP) : 2.36.2

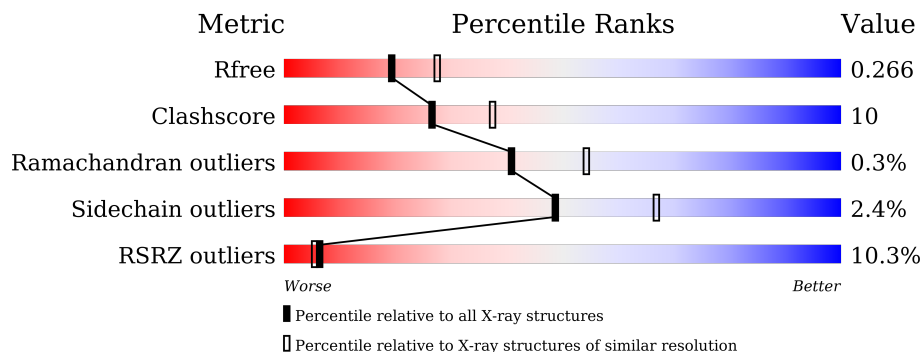
# 1 Overall quality at a glance

The following experimental techniques were used to determine the structure:

*X-RAY DIFFRACTION*

The reported resolution of this entry is 2.43 Å.

Percentile scores (ranging between 0-100) for global validation metrics of the entry are shown in the following graphic. The table shows the number of entries on which the scores are based.



Metric	Whole archive (#Entries)	Similar resolution (#Entries, resolution range(Å))
$R_{free}$	130704	4647 (2.44-2.40)
Clashscore	141614	5161 (2.44-2.40)
Ramachandran outliers	138981	5073 (2.44-2.40)
Sidechain outliers	138945	5074 (2.44-2.40)
RSRZ outliers	127900	4543 (2.44-2.40)

The table below summarises the geometric issues observed across the polymeric chains and their fit to the electron density. The red, orange, yellow and green segments of the lower bar indicate the fraction of residues that contain outliers for  $\geq 3$ , 2, 1 and 0 types of geometric quality criteria respectively. A grey segment represents the fraction of residues that are not modelled. The numeric value for each fraction is indicated below the corresponding segment, with a dot representing fractions  $\leq 5\%$ . The upper red bar (where present) indicates the fraction of residues that have poor fit to the electron density. The numeric value is given above the bar.

Mol	Chain	Length	Quality of chain
1	A	488	 10% 76% 21% ..
1	B	488	 10% 77% 19% ..

## 2 Entry composition i

There are 4 unique types of molecules in this entry. The entry contains 7603 atoms, of which 0 are hydrogens and 0 are deuteriums.

In the tables below, the ZeroOcc column contains the number of atoms modelled with zero occupancy, the AltConf column contains the number of residues with at least one atom in alternate conformation and the Trace column contains the number of residues modelled with at most 2 atoms.

- Molecule 1 is a protein called Glycosyltransferase.

Mol	Chain	Residues	Atoms					ZeroOcc	AltConf	Trace
			Total	C	N	O	S			
1	B	479	3759	2403	618	713	25	0	0	0
1	A	477	3743	2393	615	710	25	0	1	0

There are 60 discrepancies between the modelled and reference sequences:

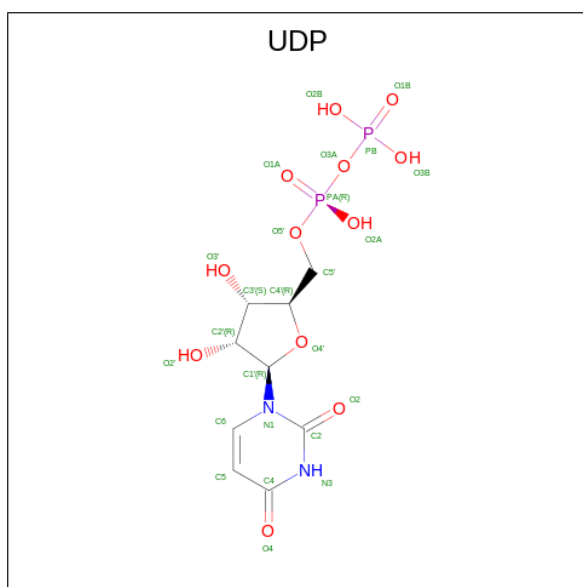
Chain	Residue	Modelled	Actual	Comment	Reference
B	-4	GLY	-	expression tag	UNP B6EWZ1
B	-3	SER	-	expression tag	UNP B6EWZ1
B	-2	GLY	-	expression tag	UNP B6EWZ1
B	-1	GLU	-	expression tag	UNP B6EWZ1
B	0	PHE	-	expression tag	UNP B6EWZ1
B	1	MET	-	expression tag	UNP B6EWZ1
B	2	LYS	-	expression tag	UNP B6EWZ1
B	3	GLU	-	expression tag	UNP B6EWZ1
B	4	THR	-	expression tag	UNP B6EWZ1
B	5	LYS	-	expression tag	UNP B6EWZ1
B	6	ASN	-	expression tag	UNP B6EWZ1
B	7	ILE	-	expression tag	UNP B6EWZ1
B	8	GLU	-	expression tag	UNP B6EWZ1
B	9	LEU	-	expression tag	UNP B6EWZ1
B	10	ILE	-	expression tag	UNP B6EWZ1
B	11	PHE	-	expression tag	UNP B6EWZ1
B	12	ILE	-	expression tag	UNP B6EWZ1
B	13	PRO	-	expression tag	UNP B6EWZ1
B	14	CYS	-	expression tag	UNP B6EWZ1
B	15	PRO	-	expression tag	UNP B6EWZ1
B	16	GLY	-	expression tag	UNP B6EWZ1
B	17	ILE	-	expression tag	UNP B6EWZ1
B	18	GLY	-	expression tag	UNP B6EWZ1
B	19	HIS	-	expression tag	UNP B6EWZ1
B	20	LEU	-	expression tag	UNP B6EWZ1

*Continued on next page...*

*Continued from previous page...*

Chain	Residue	Modelled	Actual	Comment	Reference
B	21	VAL	-	expression tag	UNP B6EWZ1
B	22	SER	-	expression tag	UNP B6EWZ1
B	23	THR	-	expression tag	UNP B6EWZ1
B	24	VAL	-	expression tag	UNP B6EWZ1
B	25	GLU	-	expression tag	UNP B6EWZ1
A	-4	GLY	-	expression tag	UNP B6EWZ1
A	-3	SER	-	expression tag	UNP B6EWZ1
A	-2	GLY	-	expression tag	UNP B6EWZ1
A	-1	GLU	-	expression tag	UNP B6EWZ1
A	0	PHE	-	expression tag	UNP B6EWZ1
A	1	MET	-	expression tag	UNP B6EWZ1
A	2	LYS	-	expression tag	UNP B6EWZ1
A	3	GLU	-	expression tag	UNP B6EWZ1
A	4	THR	-	expression tag	UNP B6EWZ1
A	5	LYS	-	expression tag	UNP B6EWZ1
A	6	ASN	-	expression tag	UNP B6EWZ1
A	7	ILE	-	expression tag	UNP B6EWZ1
A	8	GLU	-	expression tag	UNP B6EWZ1
A	9	LEU	-	expression tag	UNP B6EWZ1
A	10	ILE	-	expression tag	UNP B6EWZ1
A	11	PHE	-	expression tag	UNP B6EWZ1
A	12	ILE	-	expression tag	UNP B6EWZ1
A	13	PRO	-	expression tag	UNP B6EWZ1
A	14	CYS	-	expression tag	UNP B6EWZ1
A	15	PRO	-	expression tag	UNP B6EWZ1
A	16	GLY	-	expression tag	UNP B6EWZ1
A	17	ILE	-	expression tag	UNP B6EWZ1
A	18	GLY	-	expression tag	UNP B6EWZ1
A	19	HIS	-	expression tag	UNP B6EWZ1
A	20	LEU	-	expression tag	UNP B6EWZ1
A	21	VAL	-	expression tag	UNP B6EWZ1
A	22	SER	-	expression tag	UNP B6EWZ1
A	23	THR	-	expression tag	UNP B6EWZ1
A	24	VAL	-	expression tag	UNP B6EWZ1
A	25	GLU	-	expression tag	UNP B6EWZ1

- Molecule 2 is URIDINE-5'-DIPHOSPHATE (three-letter code: UDP) (formula: C<sub>9</sub>H<sub>14</sub>N<sub>2</sub>O<sub>12</sub>P<sub>2</sub>) (labeled as "Ligand of Interest" by depositor).



Mol	Chain	Residues	Atoms					ZeroOcc	AltConf
			Total	C	N	O	P		
2	B	1	25	9	2	12	2	0	0
2	A	1	25	9	2	12	2	0	0

- Molecule 3 is GLYCEROL (three-letter code: GOL) (formula:  $C_3H_8O_3$ ).



Mol	Chain	Residues	Atoms			ZeroOcc	AltConf
			Total	C	O		
3	A	1	6	3	3	0	0

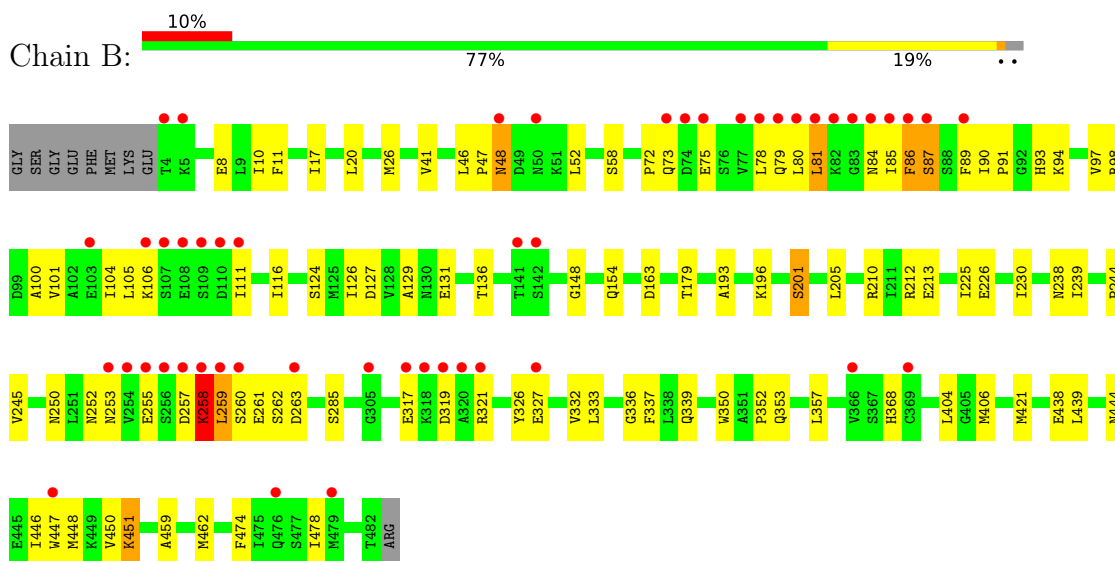
- Molecule 4 is water.

<b>Mol</b>	<b>Chain</b>	<b>Residues</b>	<b>Atoms</b>		<b>ZeroOcc</b>	<b>AltConf</b>
4	B	27	Total 27	O 27	0	0
4	A	18	Total 18	O 18	0	0

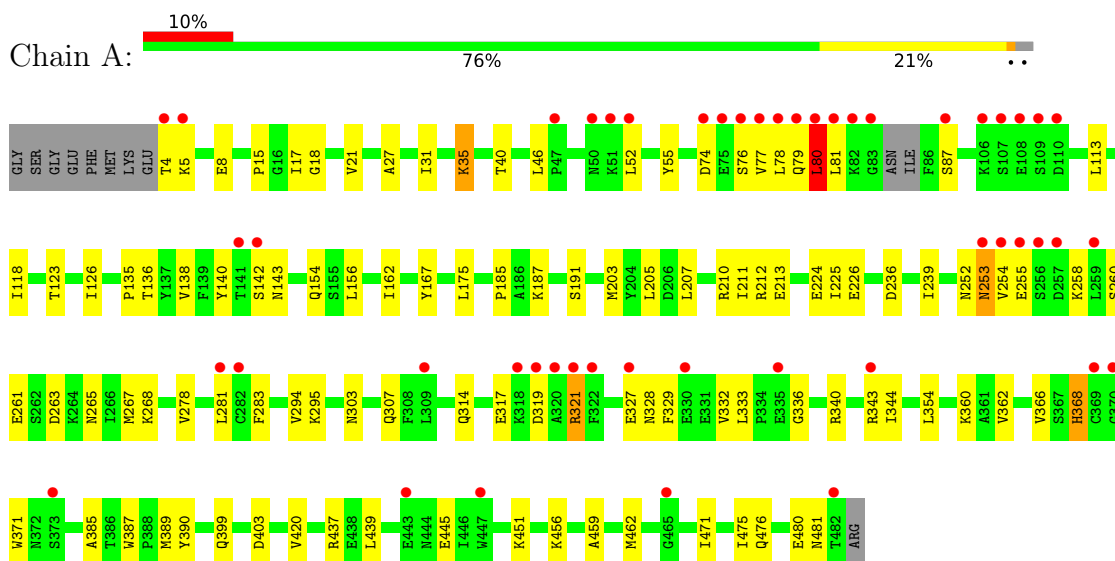
### 3 Residue-property plots [i](#)

These plots are drawn for all protein, RNA, DNA and oligosaccharide chains in the entry. The first graphic for a chain summarises the proportions of the various outlier classes displayed in the second graphic. The second graphic shows the sequence view annotated by issues in geometry and electron density. Residues are color-coded according to the number of geometric quality criteria for which they contain at least one outlier: green = 0, yellow = 1, orange = 2 and red = 3 or more. A red dot above a residue indicates a poor fit to the electron density ( $RSRZ > 2$ ). Stretches of 2 or more consecutive residues without any outlier are shown as a green connector. Residues present in the sample, but not in the model, are shown in grey.

- Molecule 1: Glycosyltransferase



- Molecule 1: Glycosyltransferase



## 4 Data and refinement statistics

Property	Value	Source
Space group	P 2 21 21	Depositor
Cell constants a, b, c, $\alpha$ , $\beta$ , $\gamma$	72.44Å 80.84Å 180.24Å 90.00° 90.00° 90.00°	Depositor
Resolution (Å)	31.02 – 2.43 31.02 – 2.43	Depositor EDS
% Data completeness (in resolution range)	99.8 (31.02-2.43) 99.8 (31.02-2.43)	Depositor EDS
$R_{merge}$	(Not available)	Depositor
$R_{sym}$	(Not available)	Depositor
$\langle I/\sigma(I) \rangle$ <sup>1</sup>	2.02 (at 2.42Å)	Xtrriage
Refinement program	PHENIX 1.11.1_2575	Depositor
R, $R_{free}$	0.219 , 0.266 0.219 , 0.266	Depositor DCC
$R_{free}$ test set	2000 reflections (4.91%)	wwPDB-VP
Wilson B-factor (Å <sup>2</sup> )	52.4	Xtrriage
Anisotropy	0.315	Xtrriage
Bulk solvent $k_{sol}$ (e/Å <sup>3</sup> ), $B_{sol}$ (Å <sup>2</sup> )	0.32 , 45.0	EDS
L-test for twinning <sup>2</sup>	$\langle  L  \rangle = 0.48$ , $\langle L^2 \rangle = 0.32$	Xtrriage
Estimated twinning fraction	No twinning to report.	Xtrriage
$F_o, F_c$ correlation	0.95	EDS
Total number of atoms	7603	wwPDB-VP
Average B, all atoms (Å <sup>2</sup> )	68.0	wwPDB-VP

Xtrriage's analysis on translational NCS is as follows: *The largest off-origin peak in the Patterson function is 4.28% of the height of the origin peak. No significant pseudotranslation is detected.*

<sup>1</sup>Intensities estimated from amplitudes.

<sup>2</sup>Theoretical values of  $\langle |L| \rangle$ ,  $\langle L^2 \rangle$  for acentric reflections are 0.5, 0.333 respectively for untwinned datasets, and 0.375, 0.2 for perfectly twinned datasets.



## 5 Model quality [i](#)

### 5.1 Standard geometry [i](#)

Bond lengths and bond angles in the following residue types are not validated in this section: GOL, UDP

The Z score for a bond length (or angle) is the number of standard deviations the observed value is removed from the expected value. A bond length (or angle) with  $|Z| > 5$  is considered an outlier worth inspection. RMSZ is the root-mean-square of all Z scores of the bond lengths (or angles).

Mol	Chain	Bond lengths		Bond angles	
		RMSZ	# Z  >5	RMSZ	# Z  >5
1	A	0.27	0/3815	0.45	0/5158
1	B	0.27	0/3838	0.46	2/5192 (0.0%)
All	All	0.27	0/7653	0.46	2/10350 (0.0%)

There are no bond length outliers.

All (2) bond angle outliers are listed below:

Mol	Chain	Res	Type	Atoms	Z	Observed(°)	Ideal(°)
1	B	259	LEU	CA-CB-CG	5.57	128.11	115.30
1	B	81	LEU	CA-CB-CG	5.14	127.12	115.30

There are no chirality outliers.

There are no planarity outliers.

### 5.2 Too-close contacts [i](#)

In the following table, the Non-H and H(model) columns list the number of non-hydrogen atoms and hydrogen atoms in the chain respectively. The H(added) column lists the number of hydrogen atoms added and optimized by MolProbity. The Clashes column lists the number of clashes within the asymmetric unit, whereas Symm-Clashes lists symmetry-related clashes.

Mol	Chain	Non-H	H(model)	H(added)	Clashes	Symm-Clashes
1	A	3743	0	3756	79	0
1	B	3759	0	3774	75	0
2	A	25	0	11	3	0
2	B	25	0	11	0	0
3	A	6	0	8	3	0
4	A	18	0	0	0	0
4	B	27	0	0	0	0

*Continued on next page...*

*Continued from previous page...*

Mol	Chain	Non-H	H(model)	H(added)	Clashes	Symm-Clashes
All	All	7603	0	7560	155	0

The all-atom clashscore is defined as the number of clashes found per 1000 atoms (including hydrogen atoms). The all-atom clashscore for this structure is 10.

All (155) close contacts within the same asymmetric unit are listed below, sorted by their clash magnitude.

Atom-1	Atom-2	Interatomic distance (Å)	Clash overlap (Å)
1:B:73:GLN:HE22	1:B:93:HIS:CD2	1.37	1.40
1:B:73:GLN:NE2	1:B:93:HIS:NE2	1.84	1.20
1:B:73:GLN:NE2	1:B:93:HIS:CD2	2.22	1.00
1:A:307:GLN:HG3	1:A:344:ILE:HG13	1.48	0.95
1:A:265:ASN:HA	1:A:268:LYS:HD2	1.57	0.86
1:B:444:ASN:HB3	1:B:447:TRP:CD1	2.17	0.80
1:A:78:LEU:H	1:A:80:LEU:HD21	1.48	0.79
1:A:78:LEU:N	1:A:80:LEU:HD21	2.00	0.77
1:A:307:GLN:CG	1:A:344:ILE:HG13	2.19	0.72
1:B:75:GLU:HA	1:B:78:LEU:HB2	1.70	0.71
1:B:84:ASN:HB3	1:B:87:SER:HB3	1.73	0.71
1:B:80:LEU:HD13	1:A:76:SER:HA	1.73	0.70
1:A:281:LEU:HD22	1:A:366:VAL:HB	1.75	0.68
1:A:8:GLU:OE2	1:A:40:THR:OG1	2.03	0.68
1:A:80:LEU:HG	1:A:81:LEU:H	1.58	0.67
1:B:73:GLN:HE22	1:B:93:HIS:HD2	1.32	0.67
1:B:11:PHE:HB2	1:B:41:VAL:HG22	1.77	0.66
1:A:471:ILE:O	1:A:475:ILE:HG13	1.97	0.65
1:B:20:LEU:HD23	1:B:52:LEU:HD22	1.80	0.64
1:A:366:VAL:HG22	1:A:385:ALA:HB3	1.77	0.64
1:B:101:VAL:O	1:B:105:LEU:HD22	1.98	0.64
1:A:252:ASN:O	1:A:258:LYS:HE3	1.98	0.63
1:A:126:ILE:HG12	1:A:136:THR:HG21	1.80	0.63
1:B:438:GLU:O	1:B:444:ASN:ND2	2.32	0.63
1:A:344:ILE:HG23	1:A:344:ILE:O	1.99	0.63
1:B:225:ILE:HG23	1:B:226:GLU:HG3	1.80	0.62
1:B:26:MET:SD	1:B:245:VAL:HG11	2.40	0.62
1:B:438:GLU:HG2	1:B:444:ASN:HD21	1.64	0.62
1:A:135:PRO:HG3	1:A:481:ASN:HD21	1.65	0.61
1:A:225:ILE:HG23	1:A:226:GLU:HG3	1.83	0.61
1:B:261:GLU:OE1	1:B:261:GLU:N	2.20	0.60
1:B:85:ILE:HA	1:B:89:PHE:HB3	1.82	0.60
1:B:46:LEU:HD12	1:B:47:PRO:HD2	1.82	0.60

*Continued on next page...*

*Continued from previous page...*

Atom-1	Atom-2	Interatomic distance (Å)	Clash overlap (Å)
1:A:294:VAL:HG11	1:A:332:VAL:HG22	1.84	0.60
1:A:78:LEU:H	1:A:80:LEU:CD2	2.15	0.59
1:A:253:ASN:HA	1:A:258:LYS:CE	2.33	0.58
1:A:17:ILE:HA	1:A:52:LEU:HD21	1.85	0.58
2:A:501:UDP:O1B	3:A:502:GOL:O3	2.14	0.58
1:B:106:LYS:HG2	1:B:106:LYS:O	2.03	0.58
1:B:163:ASP:OD2	1:B:196:LYS:NZ	2.33	0.58
1:A:459:ALA:HA	1:A:462:MET:HE2	1.86	0.58
1:A:138:VAL:HG21	1:A:211:ILE:HD12	1.86	0.57
1:A:329:PHE:HB3	1:A:333:LEU:HD12	1.88	0.56
1:B:444:ASN:HB3	1:B:447:TRP:NE1	2.21	0.55
1:B:17:ILE:HA	1:B:52:LEU:HD21	1.88	0.55
1:A:445:GLU:N	1:A:445:GLU:OE1	2.40	0.55
1:B:154:GLN:OE1	1:B:212:ARG:NH1	2.39	0.54
1:A:80:LEU:CG	1:A:81:LEU:H	2.17	0.53
1:A:154:GLN:OE1	1:A:212:ARG:NH1	2.38	0.53
1:B:230:ILE:HD12	1:B:244:PRO:HG3	1.90	0.53
1:A:254:VAL:HG23	1:A:354:LEU:HD21	1.89	0.53
1:A:255:GLU:HB2	1:A:258:LYS:NZ	2.23	0.53
1:B:250:ASN:OD1	1:B:253:ASN:ND2	2.42	0.52
1:B:255:GLU:HB2	1:B:258:LYS:HG2	1.92	0.52
1:A:253:ASN:O	1:A:253:ASN:ND2	2.42	0.52
1:A:314:GLN:NE2	1:A:317:GLU:OE2	2.43	0.52
1:A:283:PHE:HB3	1:A:389:MET:HE1	1.90	0.52
1:A:35:LYS:O	1:A:35:LYS:HD3	2.10	0.51
1:B:94:LYS:NZ	1:B:127:ASP:OD2	2.41	0.51
1:B:459:ALA:HA	1:B:462:MET:HE2	1.92	0.51
1:B:404:LEU:HB3	1:B:406:MET:HE3	1.92	0.51
1:B:336:GLY:HA2	1:B:339:GLN:OE1	2.11	0.51
1:A:135:PRO:HG3	1:A:481:ASN:ND2	2.26	0.51
1:A:191:SER:HB3	1:A:420:VAL:HG21	1.92	0.51
1:B:8:GLU:HB2	1:B:111:ILE:HG21	1.94	0.50
1:A:236:ASP:CG	1:A:239:ILE:HD12	2.32	0.50
1:B:333:LEU:HD13	1:B:337:PHE:HD2	1.77	0.50
1:B:97:VAL:O	1:B:101:VAL:HG23	2.12	0.50
1:B:154:GLN:HA	1:B:205:LEU:HD22	1.94	0.50
1:B:446:ILE:O	1:B:450:VAL:HG23	2.11	0.49
1:A:255:GLU:HB2	1:A:258:LYS:HZ2	1.77	0.49
1:A:321:ARG:HD3	1:A:321:ARG:H	1.77	0.49
1:A:80:LEU:HD23	1:A:80:LEU:N	2.28	0.49
1:A:476:GLN:O	1:A:480:GLU:HG3	2.12	0.49

*Continued on next page...*

*Continued from previous page...*

Atom-1	Atom-2	Interatomic distance (Å)	Clash overlap (Å)
1:A:18:GLY:HA3	3:A:502:GOL:O3	2.13	0.49
1:A:263:ASP:O	1:A:267:MET:HG2	2.12	0.49
1:A:87:SER:HB3	1:A:203[B]:MET:SD	2.53	0.49
1:A:185:PRO:HB2	1:A:187:LYS:HG2	1.94	0.49
1:B:439:LEU:O	1:B:447:TRP:CZ2	2.66	0.49
1:A:21:VAL:HG13	1:A:55:TYR:CE2	2.48	0.49
1:A:399:GLN:HA	1:A:403:ASP:HB2	1.95	0.49
1:B:79:GLN:HG3	1:B:79:GLN:O	2.13	0.48
1:A:118:ILE:HD12	1:A:123:THR:HA	1.94	0.48
1:A:156:LEU:HD22	1:A:162:ILE:HD12	1.94	0.48
1:B:447:TRP:H	1:B:447:TRP:HD1	1.61	0.48
1:B:116:ILE:HD12	1:B:129:ALA:HB2	1.94	0.48
1:B:94:LYS:HE2	1:B:124:SER:HB2	1.94	0.48
1:B:85:ILE:HB	1:B:89:PHE:HD2	1.79	0.48
1:B:353:GLN:HG3	1:B:357:LEU:HD12	1.95	0.48
1:B:72:PRO:O	1:B:73:GLN:OE1	2.31	0.47
1:B:210:ARG:O	1:B:213:GLU:HG2	2.14	0.47
1:B:447:TRP:CD1	1:B:447:TRP:N	2.82	0.47
1:B:448:MET:O	1:B:451:LYS:HG3	2.14	0.47
1:B:255:GLU:HB3	1:B:257:ASP:OD2	2.14	0.47
1:B:10:ILE:HD12	1:B:101:VAL:HG13	1.97	0.47
1:A:327:GLU:HG2	1:A:328:ASN:N	2.29	0.47
1:B:439:LEU:O	1:B:447:TRP:HZ2	1.98	0.47
1:A:210:ARG:O	1:A:213:GLU:HG2	2.15	0.47
1:A:224:GLU:HG2	1:A:456:LYS:HD3	1.97	0.46
1:B:252:ASN:O	1:B:258:LYS:HD3	2.16	0.46
1:B:78:LEU:HA	1:B:78:LEU:HD23	1.71	0.46
1:A:343:ARG:HH11	1:A:343:ARG:HB2	1.80	0.46
1:B:474:PHE:O	1:B:478:ILE:HD12	2.15	0.46
1:A:154:GLN:HA	1:A:205:LEU:HD22	1.97	0.46
1:A:278:VAL:HA	1:A:307:GLN:O	2.16	0.45
1:B:17:ILE:HG21	1:B:285:SER:HB3	1.99	0.45
1:B:193:ALA:O	1:B:201:SER:OG	2.34	0.45
1:B:47:PRO:HB2	1:B:48:ASN:OD1	2.17	0.45
1:B:85:ILE:HG13	1:B:86:PHE:N	2.31	0.45
1:B:89:PHE:CE1	1:B:93:HIS:HE1	2.35	0.45
1:B:98:ARG:HD3	1:B:131:GLU:OE1	2.17	0.44
1:B:81:LEU:HD21	1:B:89:PHE:CG	2.51	0.44
1:B:263:ASP:HB3	1:B:352:PRO:HG3	2.00	0.44
2:A:501:UDP:O1A	3:A:502:GOL:H2	2.17	0.44
1:B:474:PHE:CZ	1:B:478:ILE:HD11	2.52	0.44

*Continued on next page...*

*Continued from previous page...*

Atom-1	Atom-2	Interatomic distance (Å)	Clash overlap (Å)
1:A:278:VAL:HG13	1:A:362:VAL:HA	1.99	0.44
1:A:224:GLU:N	1:A:224:GLU:OE1	2.49	0.44
1:A:385:ALA:HB2	1:A:439:LEU:HD22	2.00	0.44
1:B:101:VAL:O	1:B:105:LEU:CD2	2.65	0.44
1:A:258:LYS:HB2	1:A:258:LYS:HZ3	1.83	0.44
1:A:336:GLY:O	1:A:340:ARG:HG3	2.18	0.44
1:A:140:TYR:CE2	1:A:142:SER:HB3	2.53	0.43
1:B:126:ILE:HG12	1:B:136:THR:HG21	1.98	0.43
1:A:52:LEU:HD23	1:A:52:LEU:HA	1.79	0.43
1:A:74:ASP:O	1:A:77:VAL:N	2.37	0.43
1:A:113:LEU:HD23	1:A:113:LEU:HA	1.87	0.43
1:B:285:SER:HA	1:B:350:TRP:HZ3	1.84	0.43
1:B:127:ASP:O	1:B:131:GLU:HG3	2.19	0.43
1:B:81:LEU:HD23	1:B:85:ILE:HG22	2.01	0.42
1:A:390:TYR:OH	2:A:501:UDP:O2B	2.20	0.42
1:A:167:TYR:CZ	1:A:175:LEU:HD21	2.54	0.42
1:B:148:GLY:HA3	1:B:179:THR:HG21	2.00	0.42
1:B:317:GLU:O	1:B:319:ASP:N	2.52	0.42
1:A:143:ASN:HB3	1:A:371:TRP:CE2	2.55	0.42
1:A:15:PRO:HB2	1:A:46:LEU:HG	2.01	0.42
1:A:253:ASN:HA	1:A:258:LYS:HE3	2.00	0.42
1:A:295:LYS:HE2	1:A:295:LYS:HB3	1.84	0.41
1:A:35:LYS:HA	1:A:35:LYS:HE2	2.01	0.41
1:B:257:ASP:OD2	1:B:257:ASP:N	2.51	0.41
1:B:84:ASN:OD1	1:B:86:PHE:N	2.53	0.41
1:B:258:LYS:HB3	1:B:259:LEU:HD12	2.02	0.41
1:B:238:ASN:O	1:B:239:ILE:HD13	2.21	0.41
1:A:4:THR:OG1	1:A:5:LYS:N	2.52	0.41
1:A:79:GLN:O	1:A:81:LEU:HG	2.21	0.41
1:A:344:ILE:O	1:A:344:ILE:CG2	2.68	0.41
1:B:90:ILE:HB	1:B:91:PRO:HD3	2.03	0.41
1:A:143:ASN:HB3	1:A:371:TRP:CZ2	2.56	0.41
1:A:303:ASN:O	1:A:437:ARG:NH2	2.50	0.41
1:A:368:HIS:HA	1:A:387:TRP:O	2.21	0.41
1:B:100:ALA:O	1:B:104:ILE:HG13	2.20	0.41
1:B:326:TYR:OH	1:B:332:VAL:HG21	2.21	0.41
1:A:207:LEU:O	1:A:211:ILE:HG12	2.20	0.40
1:A:27:ALA:O	1:A:31:ILE:HG12	2.21	0.40
1:A:258:LYS:NZ	1:A:258:LYS:HB2	2.35	0.40
1:A:260:SER:OG	1:A:261:GLU:N	2.53	0.40

There are no symmetry-related clashes.

## 5.3 Torsion angles [i](#)

### 5.3.1 Protein backbone [i](#)

In the following table, the Percentiles column shows the percent Ramachandran outliers of the chain as a percentile score with respect to all X-ray entries followed by that with respect to entries of similar resolution.

The Analysed column shows the number of residues for which the backbone conformation was analysed, and the total number of residues.

Mol	Chain	Analysed	Favoured	Allowed	Outliers	Percentiles	
1	A	473/488 (97%)	458 (97%)	14 (3%)	1 (0%)	47	61
1	B	477/488 (98%)	453 (95%)	22 (5%)	2 (0%)	34	47
All	All	950/976 (97%)	911 (96%)	36 (4%)	3 (0%)	41	54

All (3) Ramachandran outliers are listed below:

Mol	Chain	Res	Type
1	B	258	LYS
1	B	260	SER
1	A	80	LEU

### 5.3.2 Protein sidechains [i](#)

In the following table, the Percentiles column shows the percent sidechain outliers of the chain as a percentile score with respect to all X-ray entries followed by that with respect to entries of similar resolution.

The Analysed column shows the number of residues for which the sidechain conformation was analysed, and the total number of residues.

Mol	Chain	Analysed	Rotameric	Outliers	Percentiles	
1	A	419/429 (98%)	411 (98%)	8 (2%)	57	74
1	B	422/429 (98%)	410 (97%)	12 (3%)	43	62
All	All	841/858 (98%)	821 (98%)	20 (2%)	49	67

All (20) residues with a non-rotameric sidechain are listed below:

Mol	Chain	Res	Type
1	B	48	ASN
1	B	58	SER
1	B	86	PHE

*Continued on next page...*

*Continued from previous page...*

Mol	Chain	Res	Type
1	B	87	SER
1	B	201	SER
1	B	258	LYS
1	B	262	SER
1	B	321	ARG
1	B	327	GLU
1	B	368	HIS
1	B	421	MET
1	B	451	LYS
1	A	35	LYS
1	A	80	LEU
1	A	253	ASN
1	A	319	ASP
1	A	321	ARG
1	A	360	LYS
1	A	368	HIS
1	A	451	LYS

Sometimes sidechains can be flipped to improve hydrogen bonding and reduce clashes. All (3) such sidechains are listed below:

Mol	Chain	Res	Type
1	B	73	GLN
1	B	253	ASN
1	A	481	ASN

### 5.3.3 RNA [i](#)

There are no RNA molecules in this entry.

## 5.4 Non-standard residues in protein, DNA, RNA chains [i](#)

There are no non-standard protein/DNA/RNA residues in this entry.

## 5.5 Carbohydrates [i](#)

There are no monosaccharides in this entry.

## 5.6 Ligand geometry

3 ligands are modelled in this entry.

In the following table, the Counts columns list the number of bonds (or angles) for which Mogul statistics could be retrieved, the number of bonds (or angles) that are observed in the model and the number of bonds (or angles) that are defined in the Chemical Component Dictionary. The Link column lists molecule types, if any, to which the group is linked. The Z score for a bond length (or angle) is the number of standard deviations the observed value is removed from the expected value. A bond length (or angle) with  $|Z| > 2$  is considered an outlier worth inspection. RMSZ is the root-mean-square of all Z scores of the bond lengths (or angles).

Mol	Type	Chain	Res	Link	Bond lengths			Bond angles		
					Counts	RMSZ	# Z  > 2	Counts	RMSZ	# Z  > 2
3	GOL	A	502	-	5,5,5	0.89	0	5,5,5	1.03	0
2	UDP	A	501	-	24,26,26	0.39	0	37,40,40	0.63	1 (2%)
2	UDP	B	501	-	24,26,26	0.37	0	37,40,40	0.67	1 (2%)

In the following table, the Chirals column lists the number of chiral outliers, the number of chiral centers analysed, the number of these observed in the model and the number defined in the Chemical Component Dictionary. Similar counts are reported in the Torsion and Rings columns. '-' means no outliers of that kind were identified.

Mol	Type	Chain	Res	Link	Chirals	Torsions	Rings
3	GOL	A	502	-	-	4/4/4/4	-
2	UDP	A	501	-	-	6/16/32/32	0/2/2/2
2	UDP	B	501	-	-	3/16/32/32	0/2/2/2

There are no bond length outliers.

All (2) bond angle outliers are listed below:

Mol	Chain	Res	Type	Atoms	Z	Observed(°)	Ideal(°)
2	A	501	UDP	O3B-PB-O3A	2.37	112.59	104.64
2	B	501	UDP	O3B-PB-O3A	2.25	112.19	104.64

There are no chirality outliers.

All (13) torsion outliers are listed below:

Mol	Chain	Res	Type	Atoms
2	A	501	UDP	C5'-O5'-PA-O2A
3	A	502	GOL	C1-C2-C3-O3
2	A	501	UDP	C3'-C4'-C5'-O5'
2	A	501	UDP	O4'-C4'-C5'-O5'

*Continued on next page...*



*Continued from previous page...*

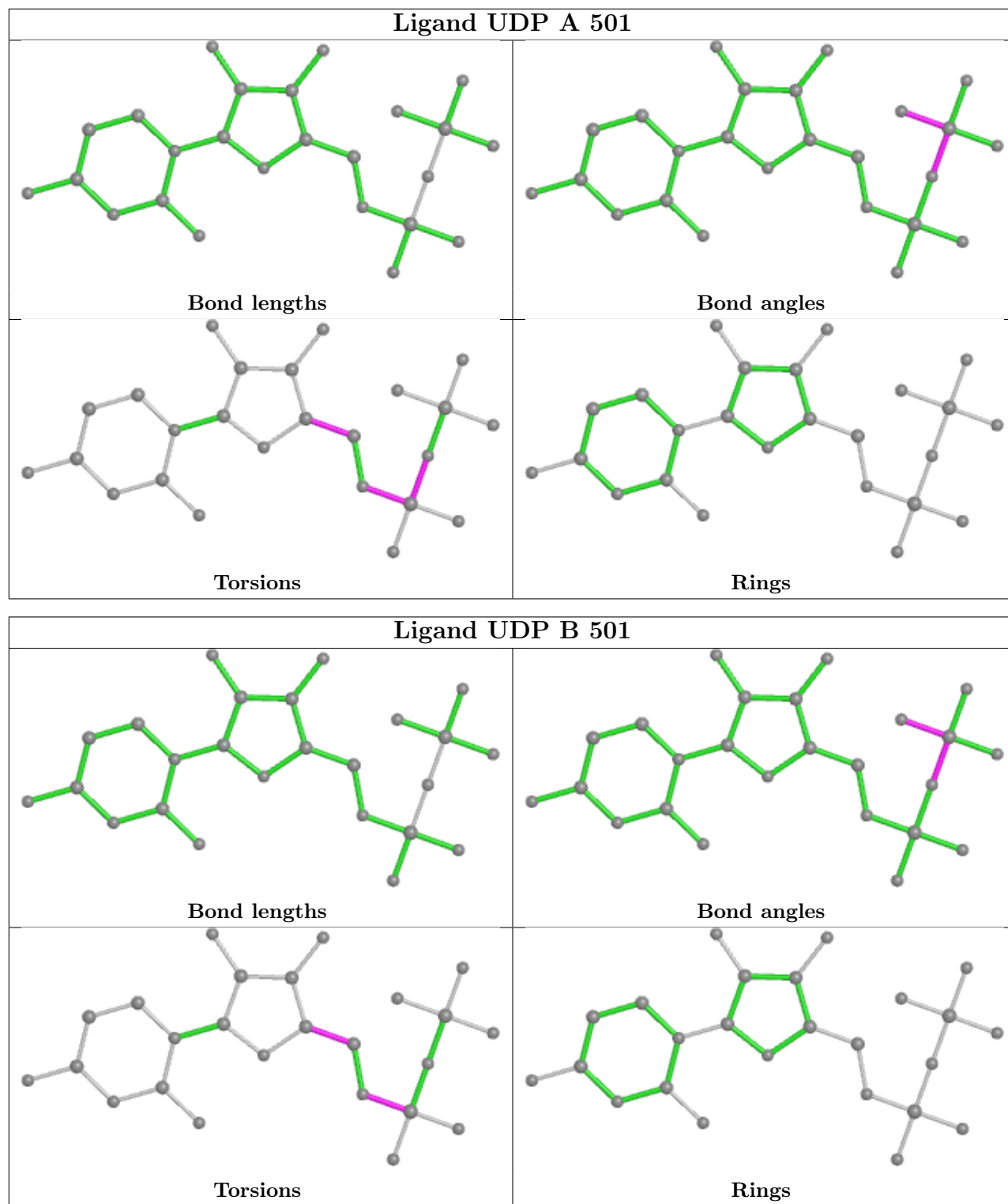
Mol	Chain	Res	Type	Atoms
3	A	502	GOL	O1-C1-C2-C3
3	A	502	GOL	O2-C2-C3-O3
2	A	501	UDP	PB-O3A-PA-O5'
2	B	501	UDP	O4'-C4'-C5'-O5'
2	A	501	UDP	C5'-O5'-PA-O3A
2	A	501	UDP	C5'-O5'-PA-O1A
3	A	502	GOL	O1-C1-C2-O2
2	B	501	UDP	C3'-C4'-C5'-O5'
2	B	501	UDP	C5'-O5'-PA-O1A

There are no ring outliers.

2 monomers are involved in 4 short contacts:

Mol	Chain	Res	Type	Clashes	Symm-Clashes
3	A	502	GOL	3	0
2	A	501	UDP	3	0

The following is a two-dimensional graphical depiction of Mogul quality analysis of bond lengths, bond angles, torsion angles, and ring geometry for all instances of the Ligand of Interest. In addition, ligands with molecular weight > 250 and outliers as shown on the validation Tables will also be included. For torsion angles, if less than 5% of the Mogul distribution of torsion angles is within 10 degrees of the torsion angle in question, then that torsion angle is considered an outlier. Any bond that is central to one or more torsion angles identified as an outlier by Mogul will be highlighted in the graph. For rings, the root-mean-square deviation (RMSD) between the ring in question and similar rings identified by Mogul is calculated over all ring torsion angles. If the average RMSD is greater than 60 degrees and the minimal RMSD between the ring in question and any Mogul-identified rings is also greater than 60 degrees, then that ring is considered an outlier. The outliers are highlighted in purple. The color gray indicates Mogul did not find sufficient equivalents in the CSD to analyse the geometry.



## 5.7 Other polymers [i](#)

There are no such residues in this entry.

## 5.8 Polymer linkage issues

There are no chain breaks in this entry.

## 6 Fit of model and data

### 6.1 Protein, DNA and RNA chains

In the following table, the column labelled ‘#RSRZ> 2’ contains the number (and percentage) of RSRZ outliers, followed by percent RSRZ outliers for the chain as percentile scores relative to all X-ray entries and entries of similar resolution. The OWAB column contains the minimum, median, 95<sup>th</sup> percentile and maximum values of the occupancy-weighted average B-factor per residue. The column labelled ‘Q< 0.9’ lists the number of (and percentage) of residues with an average occupancy less than 0.9.

Mol	Chain	Analysed	<RSRZ>	#RSRZ>2	OWAB(Å <sup>2</sup> )	Q<0.9
1	A	477/488 (97%)	0.57	49 (10%) <b>6</b>   <b>5</b>	41, 67, 112, 132	0
1	B	479/488 (98%)	0.39	49 (10%) <b>6</b>   <b>5</b>	39, 60, 111, 130	0
All	All	956/976 (97%)	0.48	98 (10%) <b>6</b>   <b>5</b>	39, 64, 112, 132	0

All (98) RSRZ outliers are listed below:

Mol	Chain	Res	Type	RSRZ
1	A	4	THR	7.3
1	A	83	GLY	7.0
1	B	256	SER	6.9
1	A	77	VAL	6.9
1	A	319	ASP	6.3
1	A	78	LEU	5.7
1	B	84	ASN	5.6
1	B	85	ILE	5.6
1	B	4	THR	5.6
1	B	80	LEU	5.4
1	A	76	SER	5.3
1	B	259	LEU	5.3
1	A	320	ALA	5.2
1	A	79	GLN	5.2
1	A	318	LYS	5.1
1	A	256	SER	5.0
1	A	87	SER	4.9
1	B	318	LYS	4.7
1	A	5	LYS	4.7
1	A	253	ASN	4.4
1	A	255	GLU	4.4
1	B	320	ALA	4.3
1	A	257	ASP	4.3
1	A	81	LEU	4.3

*Continued on next page...*

*Continued from previous page...*

<b>Mol</b>	<b>Chain</b>	<b>Res</b>	<b>Type</b>	<b>RSRZ</b>
1	A	447	TRP	4.2
1	B	253	ASN	4.1
1	B	317	GLU	4.1
1	B	257	ASP	3.9
1	A	321	ARG	3.9
1	B	87	SER	3.9
1	B	86	PHE	3.9
1	B	319	ASP	3.8
1	B	83	GLY	3.8
1	A	109	SER	3.8
1	B	108	GLU	3.7
1	B	111	ILE	3.6
1	B	79	GLN	3.6
1	B	5	LYS	3.6
1	A	80	LEU	3.6
1	A	106	LYS	3.5
1	B	109	SER	3.5
1	A	108	GLU	3.5
1	A	82	LYS	3.5
1	B	81	LEU	3.5
1	A	110	ASP	3.4
1	B	254	VAL	3.3
1	B	48	ASN	3.3
1	B	447	TRP	3.3
1	A	107	SER	3.2
1	A	330	GLU	3.2
1	A	51	LYS	3.1
1	B	73	GLN	3.1
1	B	82	LYS	3.1
1	A	343	ARG	3.1
1	A	282	CYS	3.1
1	B	89	PHE	3.1
1	A	281	LEU	3.0
1	A	254	VAL	3.0
1	A	47	PRO	2.9
1	A	75	GLU	2.9
1	B	110	ASP	2.9
1	B	107	SER	2.9
1	A	335	GLU	2.8
1	B	321	ARG	2.8
1	B	77	VAL	2.8
1	A	259	LEU	2.7

*Continued on next page...*

*Continued from previous page...*

Mol	Chain	Res	Type	RSRZ
1	B	74	ASP	2.7
1	A	482	THR	2.6
1	A	50	ASN	2.6
1	A	443	GLU	2.6
1	B	75	GLU	2.6
1	A	141	THR	2.6
1	B	50	ASN	2.5
1	A	370	GLY	2.5
1	B	258	LYS	2.4
1	A	74	ASP	2.4
1	B	305	GLY	2.4
1	B	479	MET	2.4
1	B	78	LEU	2.4
1	B	369	CYS	2.4
1	B	255	GLU	2.4
1	A	373	SER	2.4
1	B	103	GLU	2.3
1	B	476	GLN	2.3
1	B	366	VAL	2.2
1	A	142	SER	2.2
1	B	141	THR	2.2
1	A	322	PHE	2.2
1	A	52	LEU	2.2
1	A	309	LEU	2.2
1	A	465	GLY	2.1
1	B	260	SER	2.1
1	A	369	CYS	2.1
1	B	106	LYS	2.1
1	A	327	GLU	2.1
1	B	142	SER	2.0
1	B	327	GLU	2.0
1	B	263	ASP	2.0

## 6.2 Non-standard residues in protein, DNA, RNA chains [i](#)

There are no non-standard protein/DNA/RNA residues in this entry.

## 6.3 Carbohydrates [i](#)

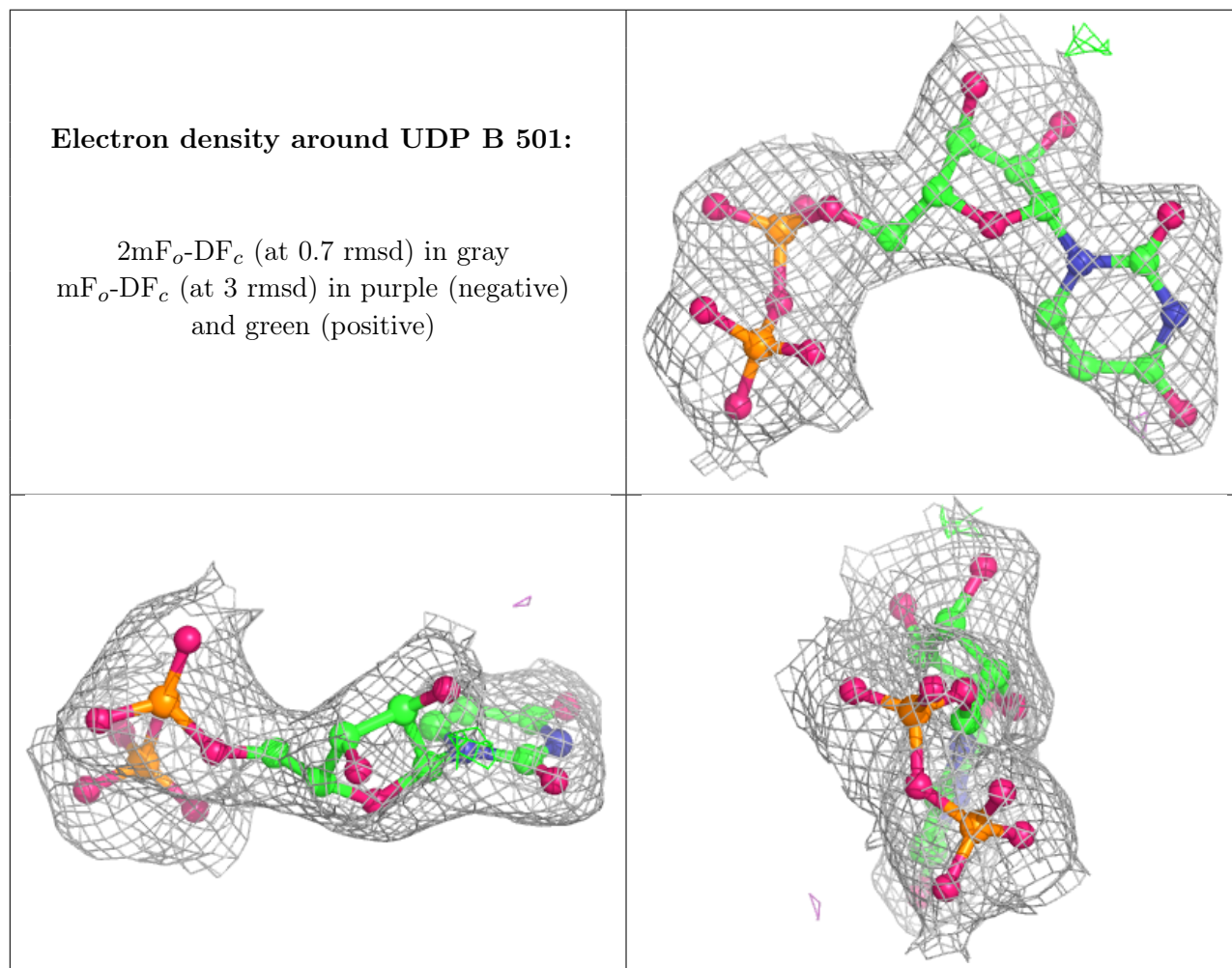
There are no monosaccharides in this entry.

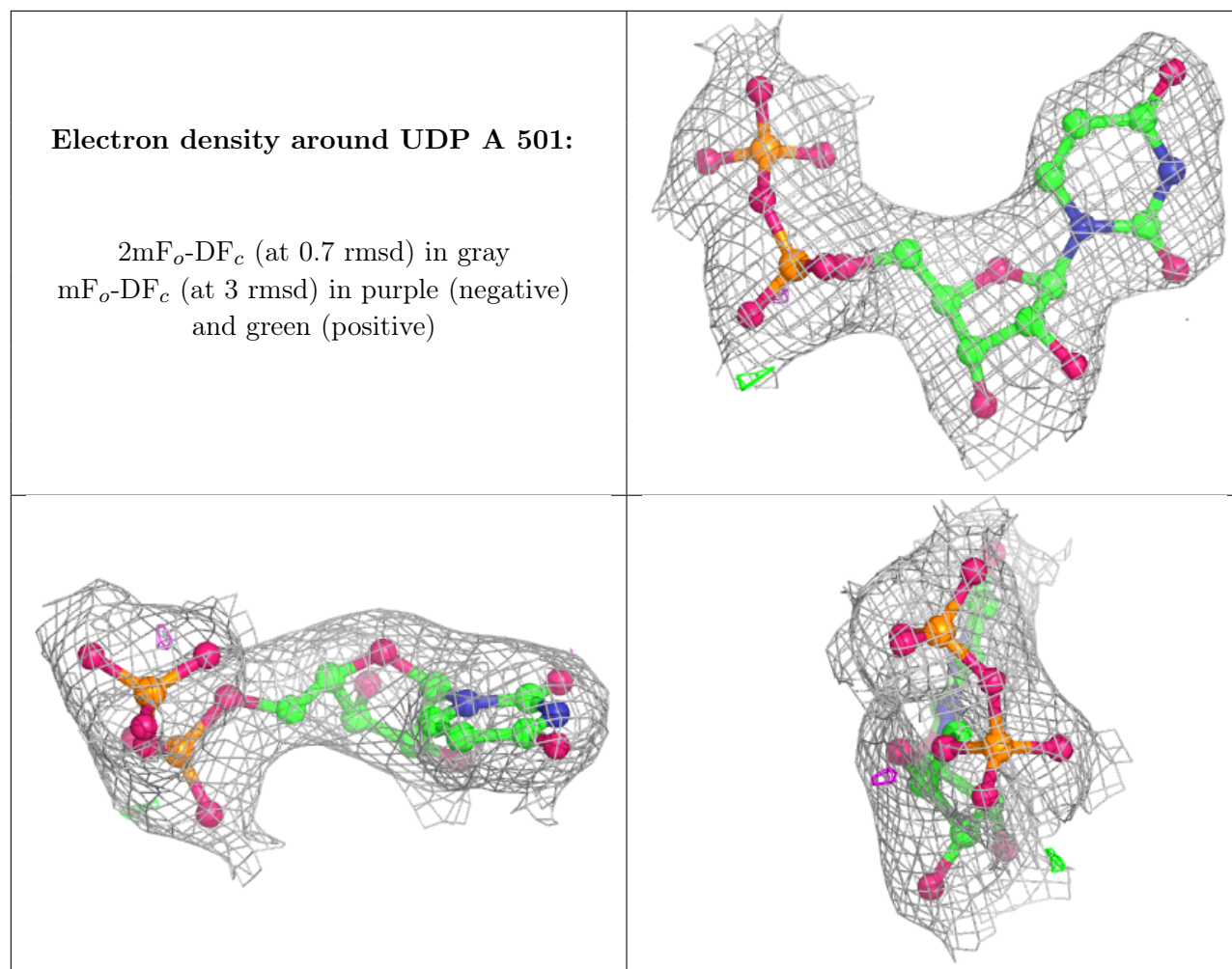
## 6.4 Ligands [i](#)

In the following table, the Atoms column lists the number of modelled atoms in the group and the number defined in the chemical component dictionary. The B-factors column lists the minimum, median, 95<sup>th</sup> percentile and maximum values of B factors of atoms in the group. The column labelled 'Q< 0.9' lists the number of atoms with occupancy less than 0.9.

Mol	Type	Chain	Res	Atoms	RSCC	RSR	B-factors(Å <sup>2</sup> )	Q<0.9
3	GOL	A	502	6/6	0.81	0.34	74,75,78,78	0
2	UDP	B	501	25/25	0.96	0.18	40,51,60,63	0
2	UDP	A	501	25/25	0.97	0.18	56,63,70,72	0

The following is a graphical depiction of the model fit to experimental electron density of all instances of the Ligand of Interest. In addition, ligands with molecular weight > 250 and outliers as shown on the geometry validation Tables will also be included. Each fit is shown from different orientation to approximate a three-dimensional view.





## 6.5 Other polymers [i](#)

There are no such residues in this entry.