



wwPDB EM Validation Summary Report ⓘ

Nov 10, 2024 – 12:33 PM EST

PDB ID : 8VH1
EMDB ID : EMD-43231
Title : CH235.12 Fab bound to the HIV-1 CH505.M5 SOSIP
Authors : Henderson, R.; Acharya, P.
Deposited on : 2023-12-30
Resolution : 4.08 Å(reported)

This is a wwPDB EM Validation Summary Report for a publicly released PDB entry.

We welcome your comments at validation@mail.wwpdb.org

A user guide is available at

<https://www.wwpdb.org/validation/2017/EMValidationReportHelp>

with specific help available everywhere you see the ⓘ symbol.

The types of validation reports are described at

<http://www.wwpdb.org/validation/2017/FAQs#types>.

The following versions of software and data (see [references ⓘ](#)) were used in the production of this report:

EMDB validation analysis : 0.0.1.dev113
MolProbity : 4.02b-467
Percentile statistics : 20231227.v01 (using entries in the PDB archive December 27th 2023)
MapQ : 1.9.13
Ideal geometry (proteins) : Engh & Huber (2001)
Ideal geometry (DNA, RNA) : Parkinson et al. (1996)
Validation Pipeline (wwPDB-VP) : 2.39

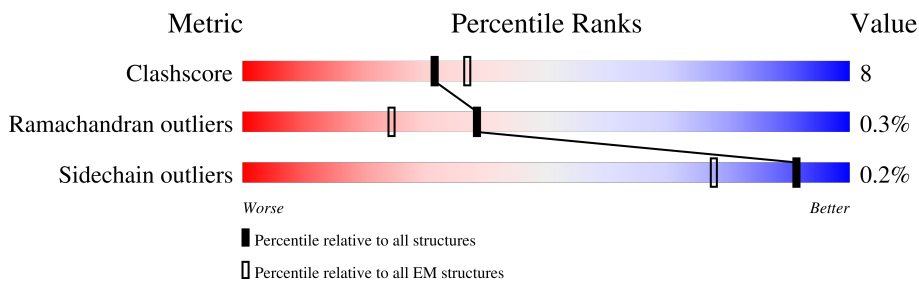
1 Overall quality at a glance

The following experimental techniques were used to determine the structure:

ELECTRON MICROSCOPY

The reported resolution of this entry is 4.08 Å.

Percentile scores (ranging between 0-100) for global validation metrics of the entry are shown in the following graphic. The table shows the number of entries on which the scores are based.



Metric	Whole archive (#Entries)	EM structures (#Entries)
Clashscore	210492	15764
Ramachandran outliers	207382	16835
Sidechain outliers	206894	16415

The table below summarises the geometric issues observed across the polymeric chains and their fit to the map. The red, orange, yellow and green segments of the bar indicate the fraction of residues that contain outliers for ≥ 3 , 2, 1 and 0 types of geometric quality criteria respectively. A grey segment represents the fraction of residues that are not modelled. The numeric value for each fraction is indicated below the corresponding segment, with a dot representing fractions $\leq 5\%$. The upper red bar (where present) indicates the fraction of residues that have poor fit to the EM map (all-atom inclusion $< 40\%$). The numeric value is given above the bar.

Mol	Chain	Length	Quality of chain
1	A	464	6% (poor fit), 81% (0-1 outliers), 14% (2 outliers), 5% (3+ outliers)
1	E	464	6% (poor fit), 79% (0-1 outliers), 16% (2 outliers), 5% (3+ outliers)
1	I	464	6% (poor fit), 79% (0-1 outliers), 16% (2 outliers), 5% (3+ outliers)
2	B	158	23% (poor fit), 65% (0-1 outliers), 11% (2 outliers), 23% (3+ outliers)
2	F	158	25% (poor fit), 61% (0-1 outliers), 16% (2 outliers), 23% (3+ outliers)
2	J	158	25% (poor fit), 61% (0-1 outliers), 16% (2 outliers), 23% (3+ outliers)
3	C	220	35% (poor fit), 78% (0-1 outliers), 22% (2 outliers)
3	G	220	36% (poor fit), 78% (0-1 outliers), 21% (2 outliers)

Continued on next page...

Continued from previous page...

Mol	Chain	Length	Quality of chain
3	K	220	
4	D	211	
4	H	211	
4	L	211	

2 Entry composition [i](#)

There are 4 unique types of molecules in this entry. The entry contains 46047 atoms, of which 22827 are hydrogens and 0 are deuteriums.

In the tables below, the AltConf column contains the number of residues with at least one atom in alternate conformation and the Trace column contains the number of residues modelled with at most 2 atoms.

- Molecule 1 is a protein called CH505.M5 SOSIP gp120.

Mol	Chain	Residues	Atoms					AltConf	Trace	
			Total	C	H	N	O			S
1	A	443	6945	2187	3463	610	657	28	0	0
1	E	443	6945	2187	3463	610	657	28	0	0
1	I	443	6945	2187	3463	610	657	28	0	0

There are 36 discrepancies between the modelled and reference sequences:

Chain	Residue	Modelled	Actual	Comment	Reference
A	31	ALA	-	expression tag	UNP M4M0W3
A	32	GLU	-	expression tag	UNP M4M0W3
A	33	ASN	-	expression tag	UNP M4M0W3
A	34	LEU	MET	conflict	UNP M4M0W3
A	64	LYS	GLU	conflict	UNP M4M0W3
A	488	LYS	GLU	conflict	UNP M4M0W3
A	489	ILE	VAL	conflict	UNP M4M0W3
A	490	GLU	LYS	conflict	UNP M4M0W3
A	498	ARG	ASN	conflict	UNP M4M0W3
A	499	CYS	ALA	conflict	UNP M4M0W3
A	500	LYS	ARG	conflict	UNP M4M0W3
A	505	GLY	-	expression tag	UNP M4M0W3
E	31	ALA	-	expression tag	UNP M4M0W3
E	32	GLU	-	expression tag	UNP M4M0W3
E	33	ASN	-	expression tag	UNP M4M0W3
E	34	LEU	MET	conflict	UNP M4M0W3
E	64	LYS	GLU	conflict	UNP M4M0W3
E	488	LYS	GLU	conflict	UNP M4M0W3
E	489	ILE	VAL	conflict	UNP M4M0W3
E	490	GLU	LYS	conflict	UNP M4M0W3
E	498	ARG	ASN	conflict	UNP M4M0W3
E	499	CYS	ALA	conflict	UNP M4M0W3
E	500	LYS	ARG	conflict	UNP M4M0W3
E	505	GLY	-	expression tag	UNP M4M0W3

Continued on next page...

Continued from previous page...

Chain	Residue	Modelled	Actual	Comment	Reference
I	31	ALA	-	expression tag	UNP M4M0W3
I	32	GLU	-	expression tag	UNP M4M0W3
I	33	ASN	-	expression tag	UNP M4M0W3
I	34	LEU	MET	conflict	UNP M4M0W3
I	64	LYS	GLU	conflict	UNP M4M0W3
I	488	LYS	GLU	conflict	UNP M4M0W3
I	489	ILE	VAL	conflict	UNP M4M0W3
I	490	GLU	LYS	conflict	UNP M4M0W3
I	498	ARG	ASN	conflict	UNP M4M0W3
I	499	CYS	ALA	conflict	UNP M4M0W3
I	500	LYS	ARG	conflict	UNP M4M0W3
I	505	GLY	-	expression tag	UNP M4M0W3

- Molecule 2 is a protein called CH505.M5 SOSIP gp41.

Mol	Chain	Residues	Atoms					AltConf	Trace	
			Total	C	H	N	O			S
2	B	122	Total	C	H	N	O	S	0	0
			1920	611	951	167	185	6		
2	F	122	Total	C	H	N	O	S	0	0
			1920	611	951	167	185	6		
2	J	122	Total	C	H	N	O	S	0	0
			1920	611	951	167	185	6		

There are 72 discrepancies between the modelled and reference sequences:

Chain	Residue	Modelled	Actual	Comment	Reference
B	507	ARG	GLU	conflict	UNP M4M0W3
B	509	ARG	GLU	conflict	UNP M4M0W3
B	510	ARG	LYS	conflict	UNP M4M0W3
B	515	ILE	MET	conflict	UNP M4M0W3
B	535	MET	ILE	conflict	UNP M4M0W3
B	543	ASN	GLN	conflict	UNP M4M0W3
B	557	ARG	LYS	conflict	UNP M4M0W3
B	559	PRO	ILE	conflict	UNP M4M0W3
B	565	LEU	MET	conflict	UNP M4M0W3
B	583	VAL	LEU	conflict	UNP M4M0W3
B	588	ARG	LYS	conflict	UNP M4M0W3
B	595	ILE	MET	conflict	UNP M4M0W3
B	605	CYS	THR	conflict	UNP M4M0W3
B	609	PRO	TYR	conflict	UNP M4M0W3
B	617	ARG	LYS	conflict	UNP M4M0W3
B	618	ASN	THR	conflict	UNP M4M0W3

Continued on next page...

Continued from previous page...

Chain	Residue	Modelled	Actual	Comment	Reference
B	619	LEU	TYR	conflict	UNP M4M0W3
B	620	SER	GLY	conflict	UNP M4M0W3
B	621	GLU	ASP	conflict	UNP M4M0W3
B	629	LEU	MET	conflict	UNP M4M0W3
B	632	ASP	GLU	conflict	UNP M4M0W3
B	633	LYS	ARG	conflict	UNP M4M0W3
B	640	GLN	GLU	conflict	UNP M4M0W3
B	644	GLY	GLU	conflict	UNP M4M0W3
F	507	ARG	GLU	conflict	UNP M4M0W3
F	509	ARG	GLU	conflict	UNP M4M0W3
F	510	ARG	LYS	conflict	UNP M4M0W3
F	515	ILE	MET	conflict	UNP M4M0W3
F	535	MET	ILE	conflict	UNP M4M0W3
F	543	ASN	GLN	conflict	UNP M4M0W3
F	557	ARG	LYS	conflict	UNP M4M0W3
F	559	PRO	ILE	conflict	UNP M4M0W3
F	565	LEU	MET	conflict	UNP M4M0W3
F	583	VAL	LEU	conflict	UNP M4M0W3
F	588	ARG	LYS	conflict	UNP M4M0W3
F	595	ILE	MET	conflict	UNP M4M0W3
F	605	CYS	THR	conflict	UNP M4M0W3
F	609	PRO	TYR	conflict	UNP M4M0W3
F	617	ARG	LYS	conflict	UNP M4M0W3
F	618	ASN	THR	conflict	UNP M4M0W3
F	619	LEU	TYR	conflict	UNP M4M0W3
F	620	SER	GLY	conflict	UNP M4M0W3
F	621	GLU	ASP	conflict	UNP M4M0W3
F	629	LEU	MET	conflict	UNP M4M0W3
F	632	ASP	GLU	conflict	UNP M4M0W3
F	633	LYS	ARG	conflict	UNP M4M0W3
F	640	GLN	GLU	conflict	UNP M4M0W3
F	644	GLY	GLU	conflict	UNP M4M0W3
J	507	ARG	GLU	conflict	UNP M4M0W3
J	509	ARG	GLU	conflict	UNP M4M0W3
J	510	ARG	LYS	conflict	UNP M4M0W3
J	515	ILE	MET	conflict	UNP M4M0W3
J	535	MET	ILE	conflict	UNP M4M0W3
J	543	ASN	GLN	conflict	UNP M4M0W3
J	557	ARG	LYS	conflict	UNP M4M0W3
J	559	PRO	ILE	conflict	UNP M4M0W3
J	565	LEU	MET	conflict	UNP M4M0W3
J	583	VAL	LEU	conflict	UNP M4M0W3

Continued on next page...

Continued from previous page...

Chain	Residue	Modelled	Actual	Comment	Reference
J	588	ARG	LYS	conflict	UNP M4M0W3
J	595	ILE	MET	conflict	UNP M4M0W3
J	605	CYS	THR	conflict	UNP M4M0W3
J	609	PRO	TYR	conflict	UNP M4M0W3
J	617	ARG	LYS	conflict	UNP M4M0W3
J	618	ASN	THR	conflict	UNP M4M0W3
J	619	LEU	TYR	conflict	UNP M4M0W3
J	620	SER	GLY	conflict	UNP M4M0W3
J	621	GLU	ASP	conflict	UNP M4M0W3
J	629	LEU	MET	conflict	UNP M4M0W3
J	632	ASP	GLU	conflict	UNP M4M0W3
J	633	LYS	ARG	conflict	UNP M4M0W3
J	640	GLN	GLU	conflict	UNP M4M0W3
J	644	GLY	GLU	conflict	UNP M4M0W3

- Molecule 3 is a protein called CH235.I60 Fab Heavy Chain.

Mol	Chain	Residues	Atoms					AltConf	Trace	
3	C	220	Total	C	H	N	O	S	0	0
			3287	1049	1623	279	328	8		
3	G	220	Total	C	H	N	O	S	0	0
			3287	1049	1623	279	328	8		
3	K	220	Total	C	H	N	O	S	0	0
			3287	1049	1623	279	328	8		

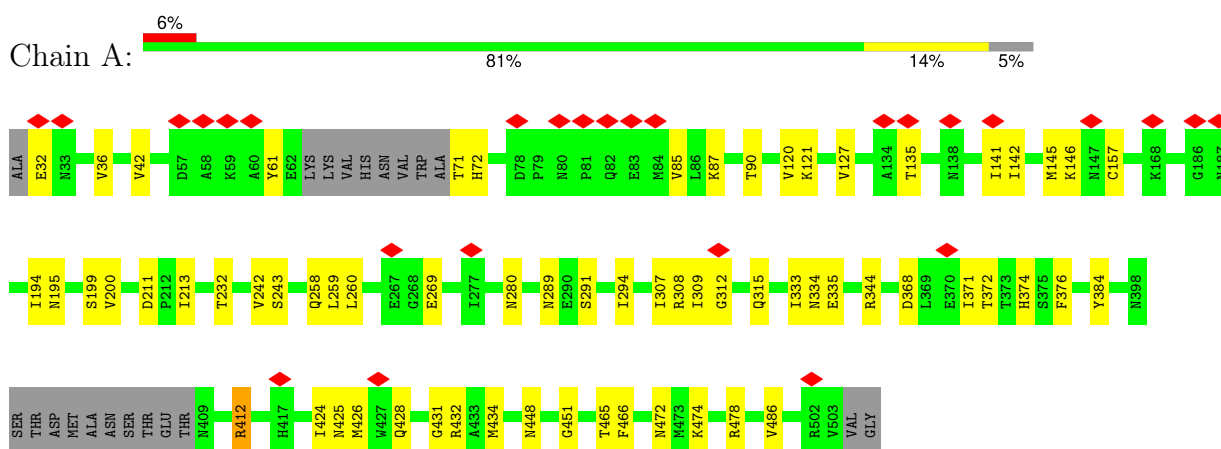
- Molecule 4 is a protein called CH235.I60 Fab Light Chain.

Mol	Chain	Residues	Atoms					AltConf	Trace	
4	D	211	Total	C	H	N	O	S	0	0
			3197	1016	1572	278	325	6		
4	H	211	Total	C	H	N	O	S	0	0
			3197	1016	1572	278	325	6		
4	L	211	Total	C	H	N	O	S	0	0
			3197	1016	1572	278	325	6		

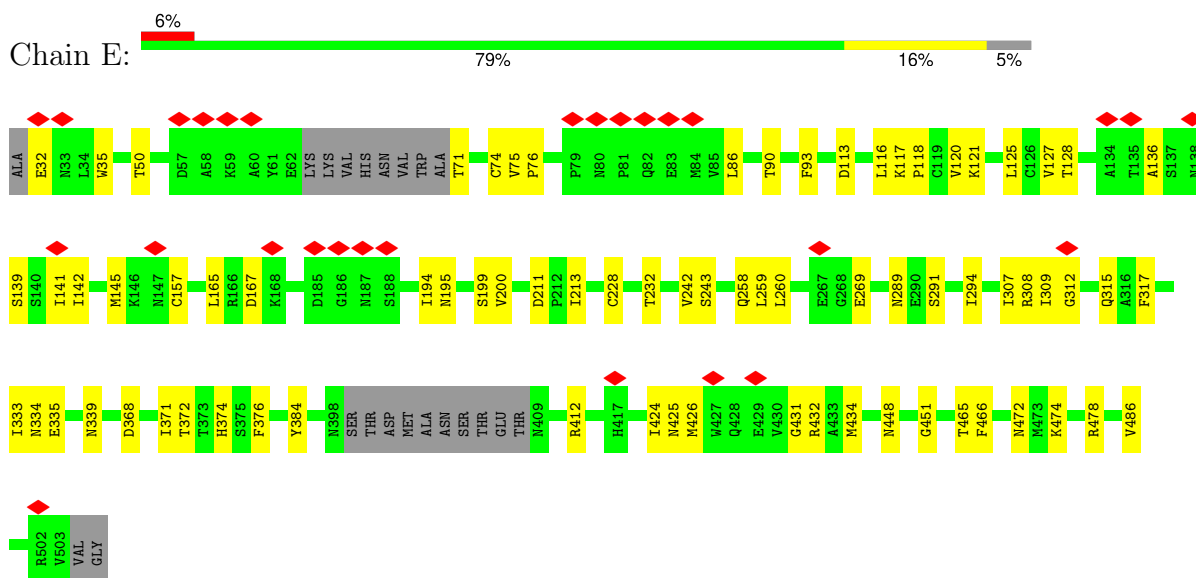
3 Residue-property plots

These plots are drawn for all protein, RNA, DNA and oligosaccharide chains in the entry. The first graphic for a chain summarises the proportions of the various outlier classes displayed in the second graphic. The second graphic shows the sequence view annotated by issues in geometry and atom inclusion in map density. Residues are color-coded according to the number of geometric quality criteria for which they contain at least one outlier: green = 0, yellow = 1, orange = 2 and red = 3 or more. A red diamond above a residue indicates a poor fit to the EM map for this residue (all-atom inclusion < 40%). Stretches of 2 or more consecutive residues without any outlier are shown as a green connector. Residues present in the sample, but not in the model, are shown in grey.

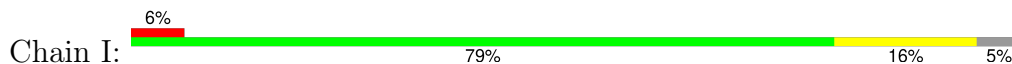
- Molecule 1: CH505.M5 SOSIP gp120

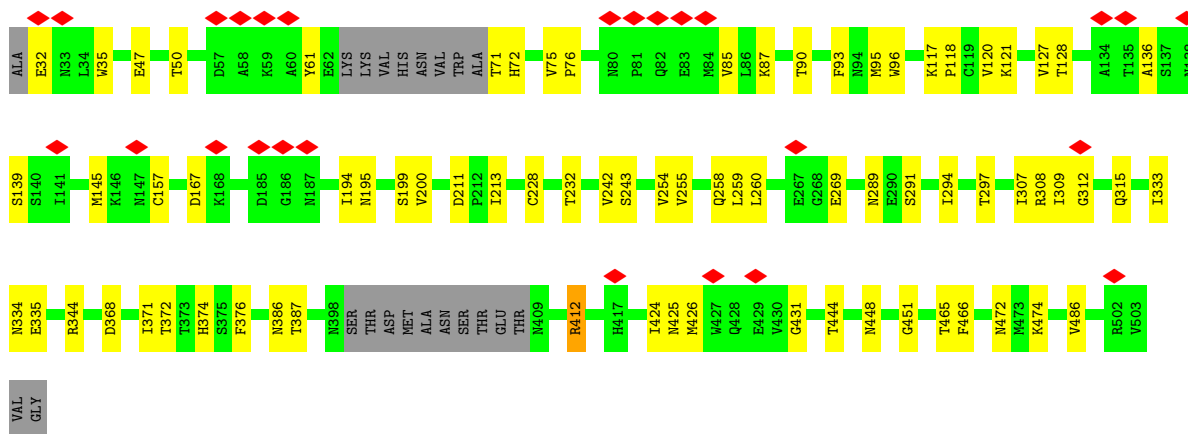


- Molecule 1: CH505.M5 SOSIP gp120

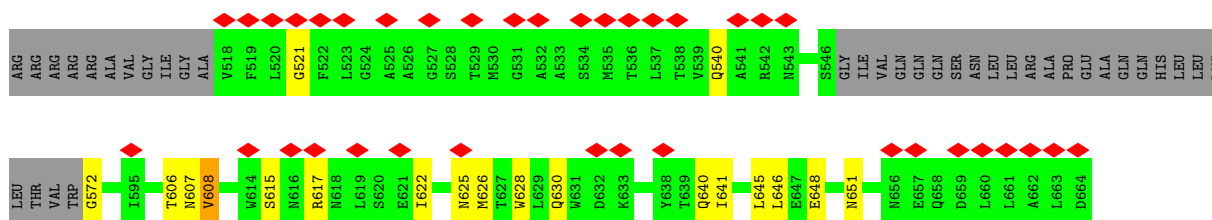


- Molecule 1: CH505.M5 SOSIP gp120

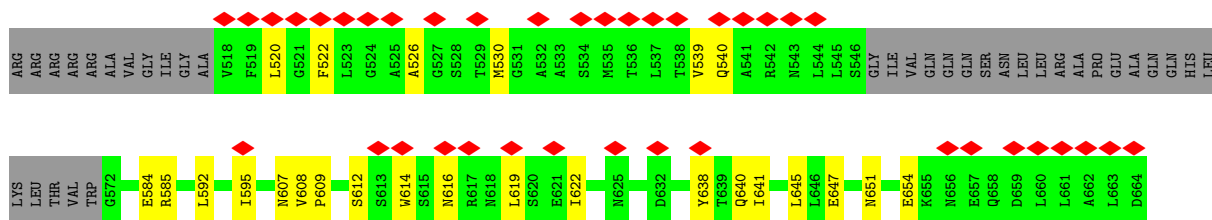




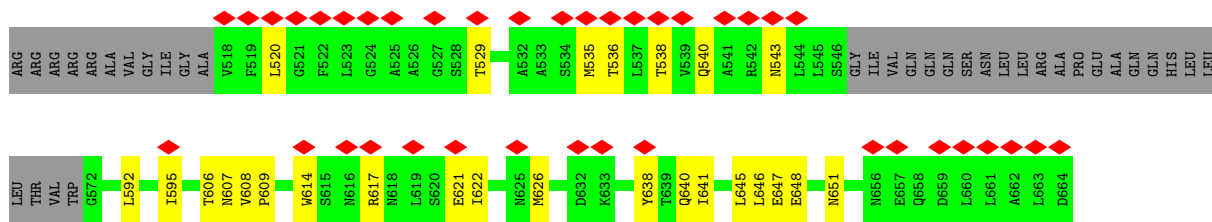
• Molecule 2: CH505.M5 SOSIP gp41



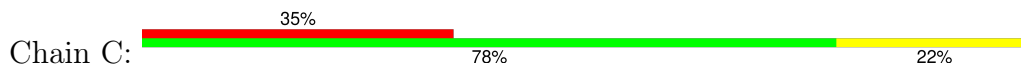
• Molecule 2: CH505.M5 SOSIP gp41

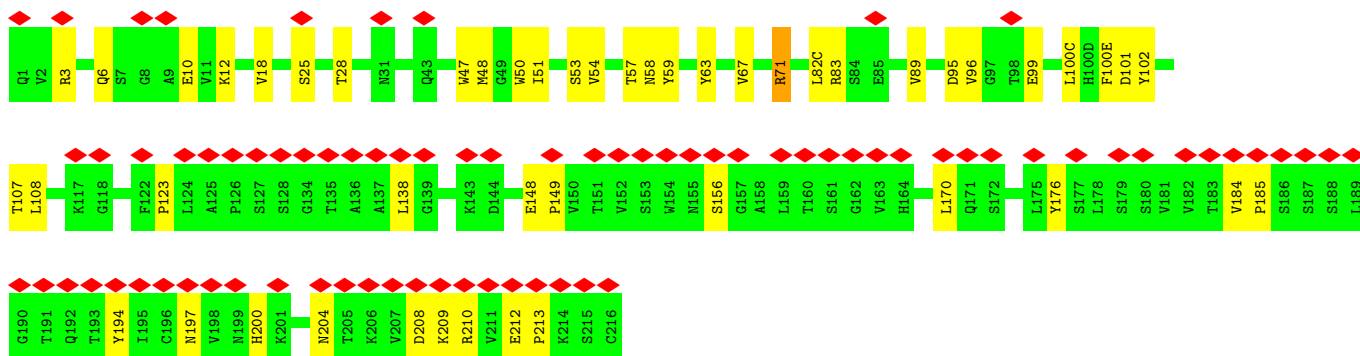


• Molecule 2: CH505.M5 SOSIP gp41

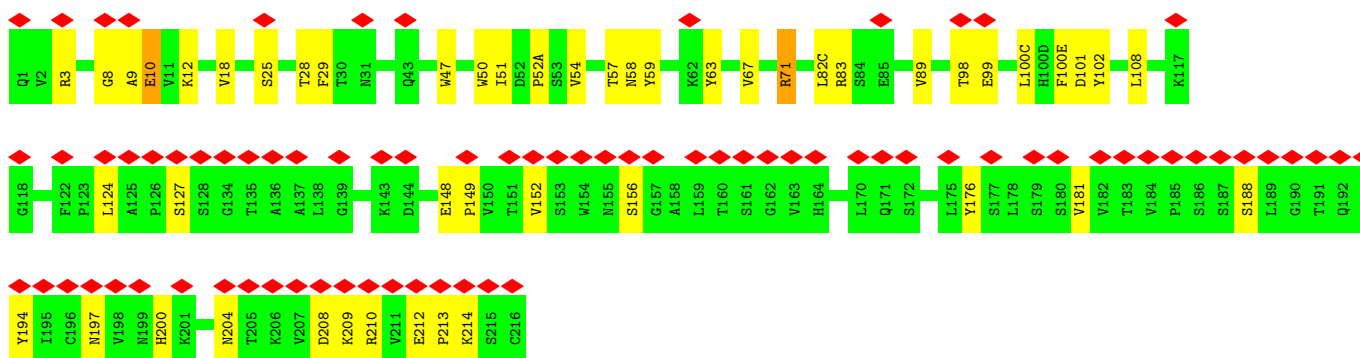
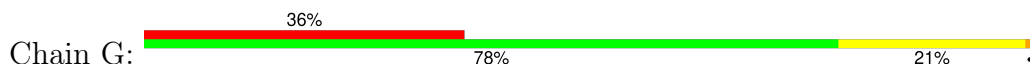


• Molecule 3: CH235.I60 Fab Heavy Chain

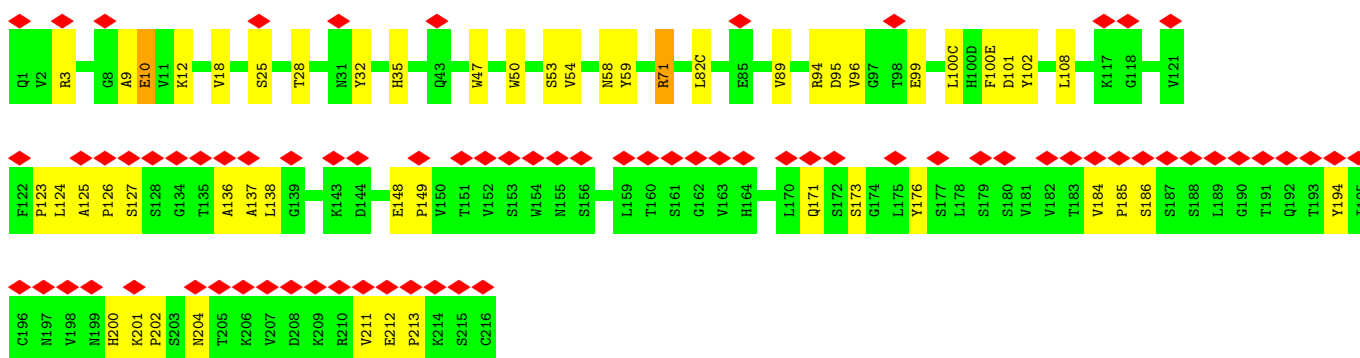
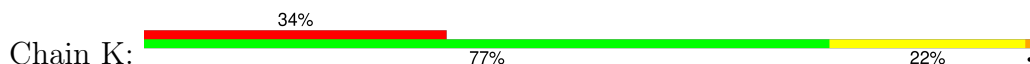




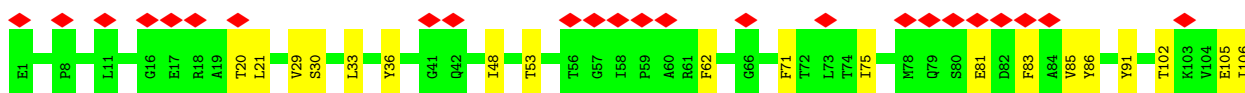
• Molecule 3: CH235.I60 Fab Heavy Chain

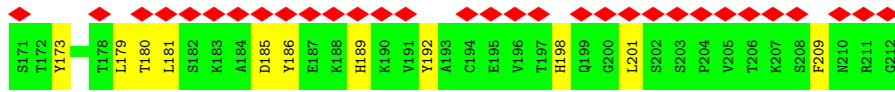
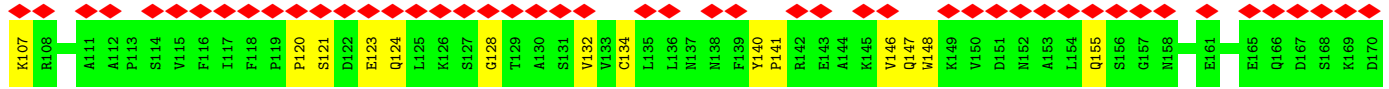


• Molecule 3: CH235.I60 Fab Heavy Chain

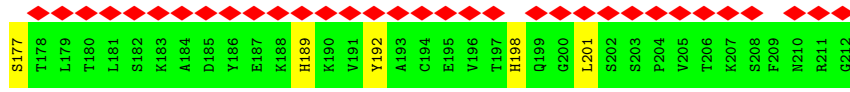
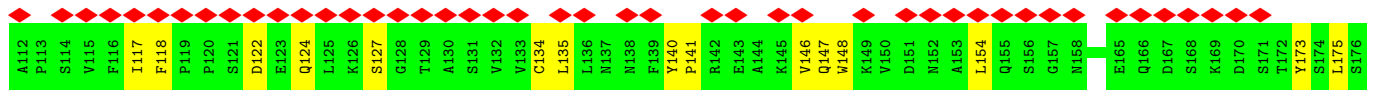
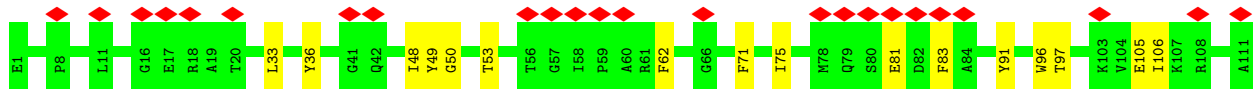
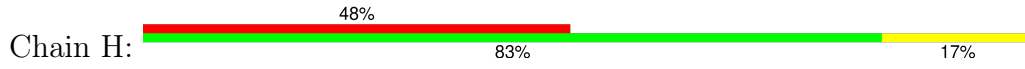


• Molecule 4: CH235.I60 Fab Light Chain

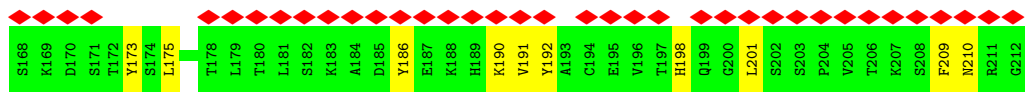
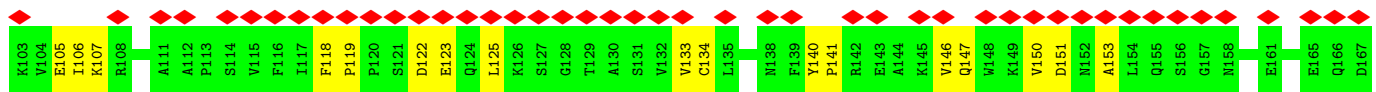
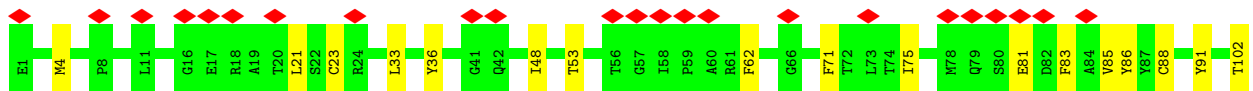
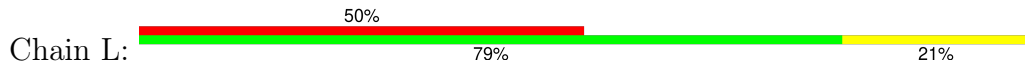




• Molecule 4: CH235.I60 Fab Light Chain



• Molecule 4: CH235.I60 Fab Light Chain



4 Experimental information

Property	Value	Source
EM reconstruction method	SINGLE PARTICLE	Depositor
Imposed symmetry	POINT, Not provided	
Number of particles used	21982	Depositor
Resolution determination method	FSC 0.143 CUT-OFF	Depositor
CTF correction method	PHASE FLIPPING AND AMPLITUDE CORRECTION	Depositor
Microscope	FEI TITAN KRIOS	Depositor
Voltage (kV)	300	Depositor
Electron dose ($e^-/\text{\AA}^2$)	59.7	Depositor
Minimum defocus (nm)	230	Depositor
Maximum defocus (nm)	4540	Depositor
Magnification	Not provided	
Image detector	GATAN K3 (6k x 4k)	Depositor
Maximum map value	4.490	Depositor
Minimum map value	-2.183	Depositor
Average map value	0.006	Depositor
Map value standard deviation	0.171	Depositor
Recommended contour level	1.28	Depositor
Map size (\AA)	345.6, 345.6, 345.6	wwPDB
Map dimensions	320, 320, 320	wwPDB
Map angles ($^\circ$)	90.0, 90.0, 90.0	wwPDB
Pixel spacing (\AA)	1.08, 1.08, 1.08	Depositor

5 Model quality [i](#)

5.1 Standard geometry [i](#)

The Z score for a bond length (or angle) is the number of standard deviations the observed value is removed from the expected value. A bond length (or angle) with $|Z| > 5$ is considered an outlier worth inspection. RMSZ is the root-mean-square of all Z scores of the bond lengths (or angles).

Mol	Chain	Bond lengths		Bond angles	
		RMSZ	# Z >5	RMSZ	# Z >5
1	A	0.34	0/3549	0.53	0/4809
1	E	0.34	0/3549	0.53	0/4809
1	I	0.34	0/3549	0.53	0/4809
2	B	0.29	0/985	0.48	0/1334
2	F	0.28	0/985	0.48	0/1334
2	J	0.28	0/985	0.49	0/1334
3	C	0.37	0/1705	0.55	0/2327
3	G	0.37	0/1705	0.56	0/2327
3	K	0.38	0/1705	0.56	0/2327
4	D	0.31	0/1662	0.52	0/2258
4	H	0.30	0/1662	0.51	0/2258
4	L	0.33	0/1662	0.52	0/2258
All	All	0.34	0/23703	0.53	0/32184

There are no bond length outliers.

There are no bond angle outliers.

There are no chirality outliers.

There are no planarity outliers.

5.2 Too-close contacts [i](#)

In the following table, the Non-H and H(model) columns list the number of non-hydrogen atoms and hydrogen atoms in the chain respectively. The H(added) column lists the number of hydrogen atoms added and optimized by MolProbity. The Clashes column lists the number of clashes within the asymmetric unit, whereas Symm-Clashes lists symmetry-related clashes.

Mol	Chain	Non-H	H(model)	H(added)	Clashes	Symm-Clashes
1	A	3482	3463	3457	57	0
1	E	3482	3463	3457	57	0
1	I	3482	3463	3457	59	0
2	B	969	951	949	17	0

Continued on next page...

Continued from previous page...

Mol	Chain	Non-H	H(model)	H(added)	Clashes	Symm-Clashes
2	F	969	951	949	21	0
2	J	969	951	949	23	0
3	C	1664	1623	1621	39	0
3	G	1664	1623	1621	38	0
3	K	1664	1623	1621	46	0
4	D	1625	1572	1572	30	0
4	H	1625	1572	1572	23	0
4	L	1625	1572	1572	35	0
All	All	23220	22827	22797	391	0

The all-atom clashscore is defined as the number of clashes found per 1000 atoms (including hydrogen atoms). The all-atom clashscore for this structure is 8.

The worst 5 of 391 close contacts within the same asymmetric unit are listed below, sorted by their clash magnitude.

Atom-1	Atom-2	Interatomic distance (Å)	Clash overlap (Å)
2:J:536:THR:O	2:J:540:GLN:NE2	2.00	0.93
1:E:368:ASP:OD1	3:G:71:ARG:NH2	2.09	0.83
1:E:335:GLU:OE2	1:E:339:ASN:ND2	2.13	0.82
1:E:371:ILE:HD13	3:G:54:VAL:CG1	2.13	0.79
3:G:3:ARG:N	3:G:25:SER:OG	2.18	0.77

There are no symmetry-related clashes.

5.3 Torsion angles [i](#)

5.3.1 Protein backbone [i](#)

In the following table, the Percentiles column shows the percent Ramachandran outliers of the chain as a percentile score with respect to all PDB entries followed by that with respect to all EM entries.

The Analysed column shows the number of residues for which the backbone conformation was analysed, and the total number of residues.

Mol	Chain	Analysed	Favoured	Allowed	Outliers	Percentiles
1	A	433/464 (93%)	386 (89%)	46 (11%)	1 (0%)	44 76
1	E	433/464 (93%)	383 (88%)	48 (11%)	2 (0%)	25 62
1	I	433/464 (93%)	384 (89%)	48 (11%)	1 (0%)	44 76

Continued on next page...

Continued from previous page...

Mol	Chain	Analysed	Favoured	Allowed	Outliers	Percentiles	
2	B	118/158 (75%)	103 (87%)	14 (12%)	1 (1%)	16	53
2	F	118/158 (75%)	99 (84%)	19 (16%)	0	100	100
2	J	118/158 (75%)	104 (88%)	14 (12%)	0	100	100
3	C	216/220 (98%)	189 (88%)	26 (12%)	1 (0%)	25	62
3	G	216/220 (98%)	193 (89%)	22 (10%)	1 (0%)	25	62
3	K	216/220 (98%)	187 (87%)	28 (13%)	1 (0%)	25	62
4	D	209/211 (99%)	195 (93%)	14 (7%)	0	100	100
4	H	209/211 (99%)	196 (94%)	13 (6%)	0	100	100
4	L	209/211 (99%)	191 (91%)	18 (9%)	0	100	100
All	All	2928/3159 (93%)	2610 (89%)	310 (11%)	8 (0%)	38	71

5 of 8 Ramachandran outliers are listed below:

Mol	Chain	Res	Type
3	C	10	GLU
3	G	10	GLU
3	K	10	GLU
1	A	412	ARG
1	E	412	ARG

5.3.2 Protein sidechains [i](#)

In the following table, the Percentiles column shows the percent sidechain outliers of the chain as a percentile score with respect to all PDB entries followed by that with respect to all EM entries.

The Analysed column shows the number of residues for which the sidechain conformation was analysed, and the total number of residues.

Mol	Chain	Analysed	Rotameric	Outliers	Percentiles	
1	A	396/413 (96%)	395 (100%)	1 (0%)	91	92
1	E	396/413 (96%)	396 (100%)	0	100	100
1	I	396/413 (96%)	396 (100%)	0	100	100
2	B	105/134 (78%)	105 (100%)	0	100	100
2	F	105/134 (78%)	105 (100%)	0	100	100
2	J	105/134 (78%)	105 (100%)	0	100	100
3	C	189/189 (100%)	187 (99%)	2 (1%)	70	80

Continued on next page...

Continued from previous page...

Mol	Chain	Analysed	Rotameric	Outliers	Percentiles	
3	G	189/189 (100%)	187 (99%)	2 (1%)	70	80
3	K	189/189 (100%)	188 (100%)	1 (0%)	86	90
4	D	182/182 (100%)	182 (100%)	0	100	100
4	H	182/182 (100%)	182 (100%)	0	100	100
4	L	182/182 (100%)	182 (100%)	0	100	100
All	All	2616/2754 (95%)	2610 (100%)	6 (0%)	91	94

5 of 6 residues with a non-rotameric sidechain are listed below:

Mol	Chain	Res	Type
3	G	71	ARG
3	G	83	ARG
3	K	71	ARG
3	C	71	ARG
1	A	280	ASN

Sometimes sidechains can be flipped to improve hydrogen bonding and reduce clashes. All (1) such sidechains are listed below:

Mol	Chain	Res	Type
2	J	540	GLN

5.3.3 RNA [i](#)

There are no RNA molecules in this entry.

5.4 Non-standard residues in protein, DNA, RNA chains [i](#)

There are no non-standard protein/DNA/RNA residues in this entry.

5.5 Carbohydrates [i](#)

There are no oligosaccharides in this entry.

5.6 Ligand geometry [i](#)

There are no ligands in this entry.

5.7 Other polymers [i](#)

There are no such residues in this entry.

5.8 Polymer linkage issues [i](#)

The following chains have linkage breaks:

Mol	Chain	Number of breaks
1	A	2
1	I	2
1	E	2
3	G	1
3	C	1
3	K	1

The worst 5 of 9 chain breaks are listed below:

Model	Chain	Residue-1	Atom-1	Residue-2	Atom-2	Distance (Å)
1	G	128:SER	C	134:GLY	N	12.57
1	C	128:SER	C	134:GLY	N	11.85
1	K	128:SER	C	134:GLY	N	10.96
1	A	147:ASN	C	157:CYS	N	7.61
1	I	147:ASN	C	157:CYS	N	7.50

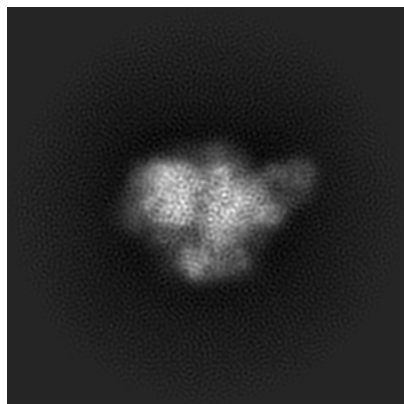
6 Map visualisation [i](#)

This section contains visualisations of the EMDB entry EMD-43231. These allow visual inspection of the internal detail of the map and identification of artifacts.

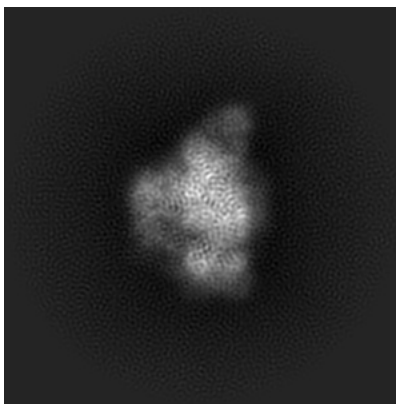
Images derived from a raw map, generated by summing the deposited half-maps, are presented below the corresponding image components of the primary map to allow further visual inspection and comparison with those of the primary map.

6.1 Orthogonal projections [i](#)

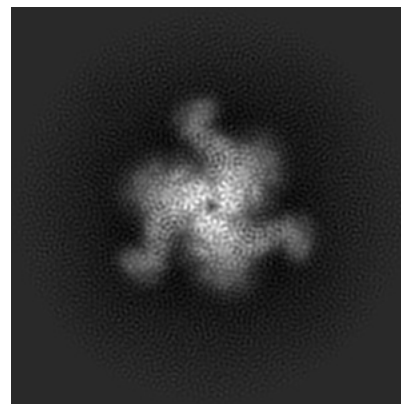
6.1.1 Primary map



X

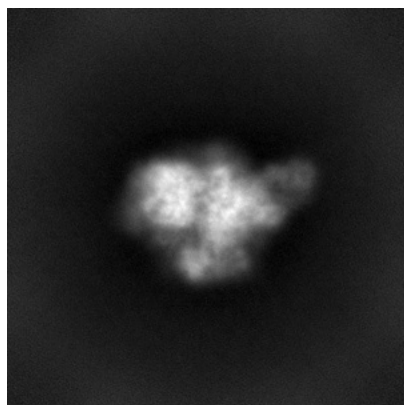


Y

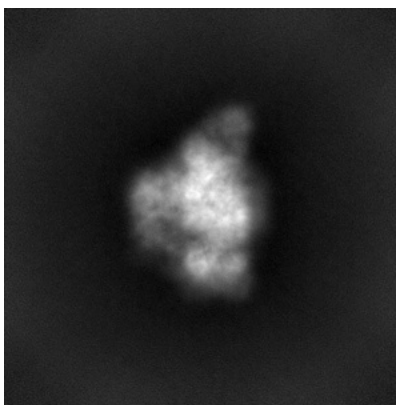


Z

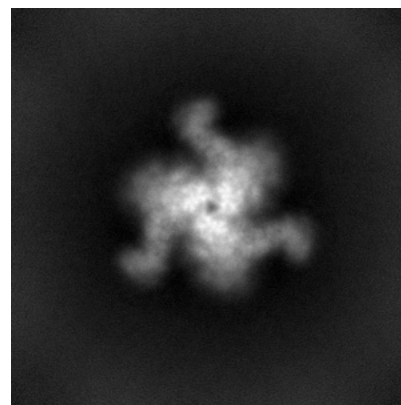
6.1.2 Raw map



X



Y

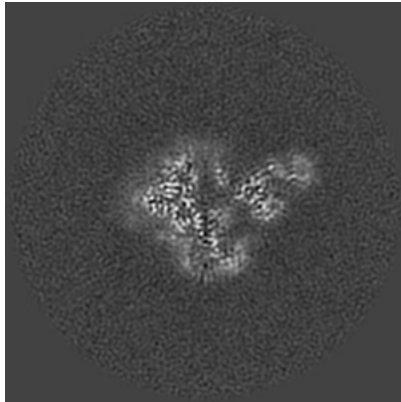


Z

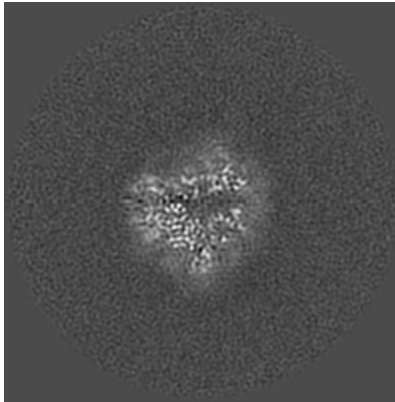
The images above show the map projected in three orthogonal directions.

6.2 Central slices [i](#)

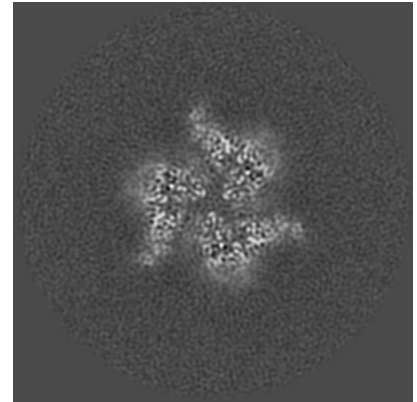
6.2.1 Primary map



X Index: 160

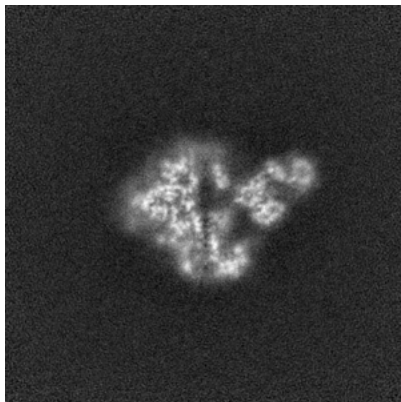


Y Index: 160

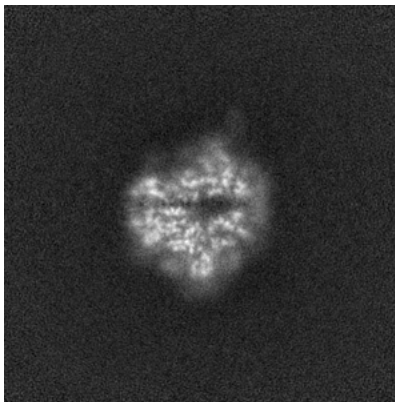


Z Index: 160

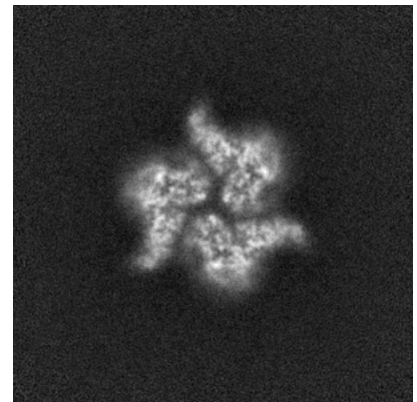
6.2.2 Raw map



X Index: 160



Y Index: 160

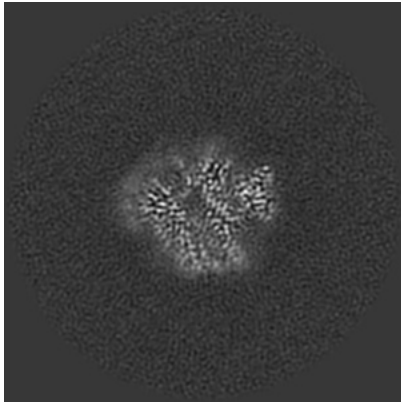


Z Index: 160

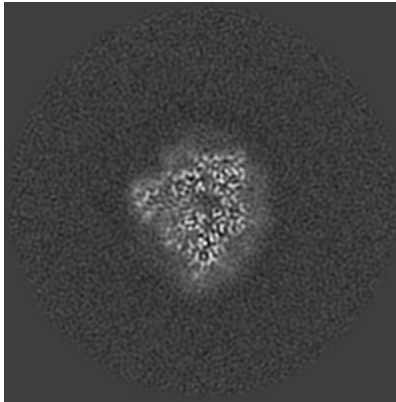
The images above show central slices of the map in three orthogonal directions.

6.3 Largest variance slices [i](#)

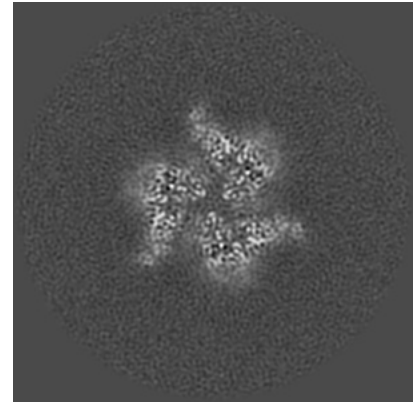
6.3.1 Primary map



X Index: 171

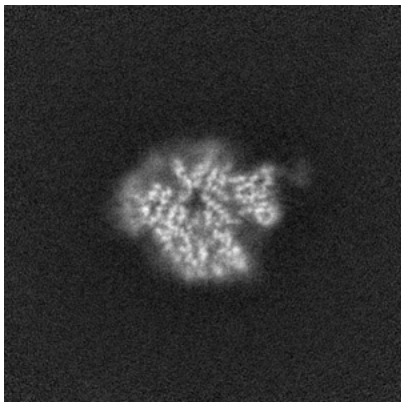


Y Index: 172

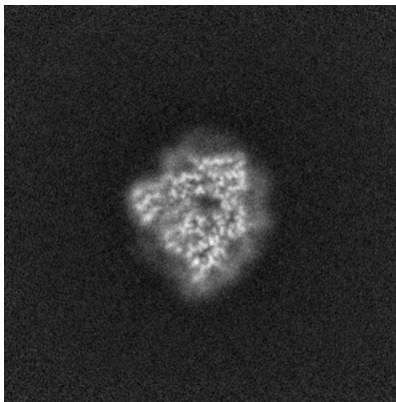


Z Index: 160

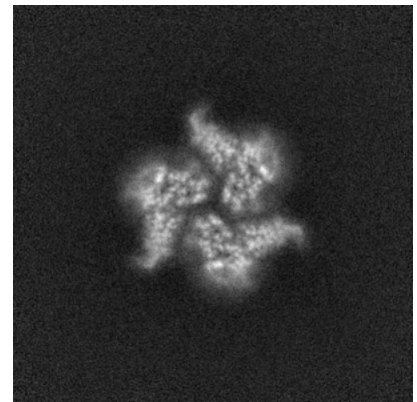
6.3.2 Raw map



X Index: 169



Y Index: 172

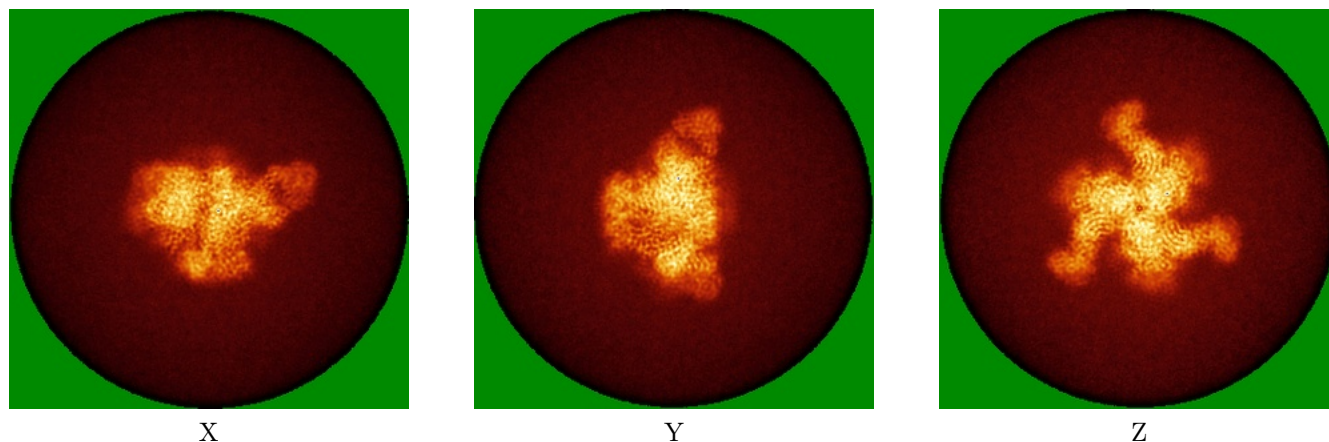


Z Index: 159

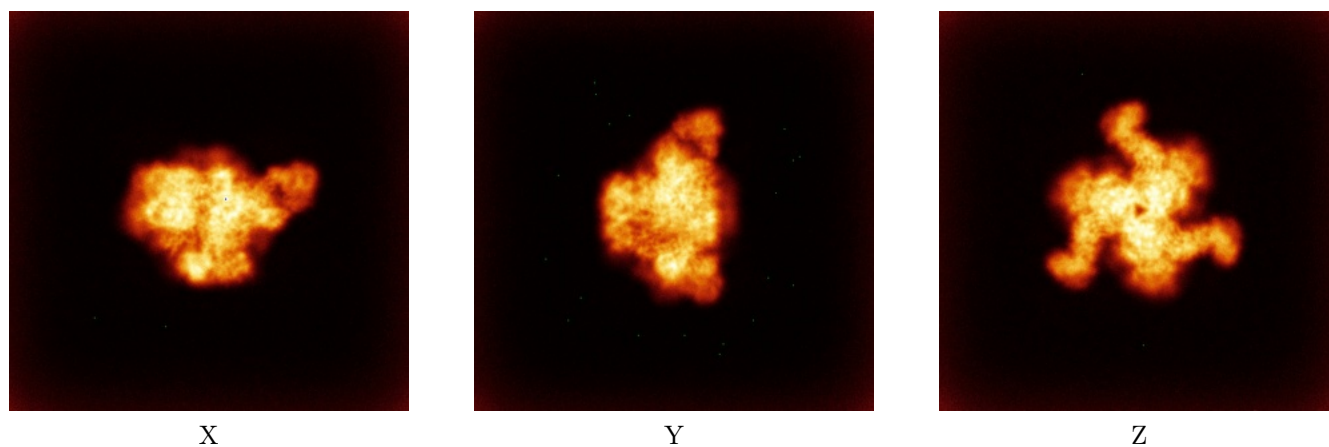
The images above show the largest variance slices of the map in three orthogonal directions.

6.4 Orthogonal standard-deviation projections (False-color) [i](#)

6.4.1 Primary map



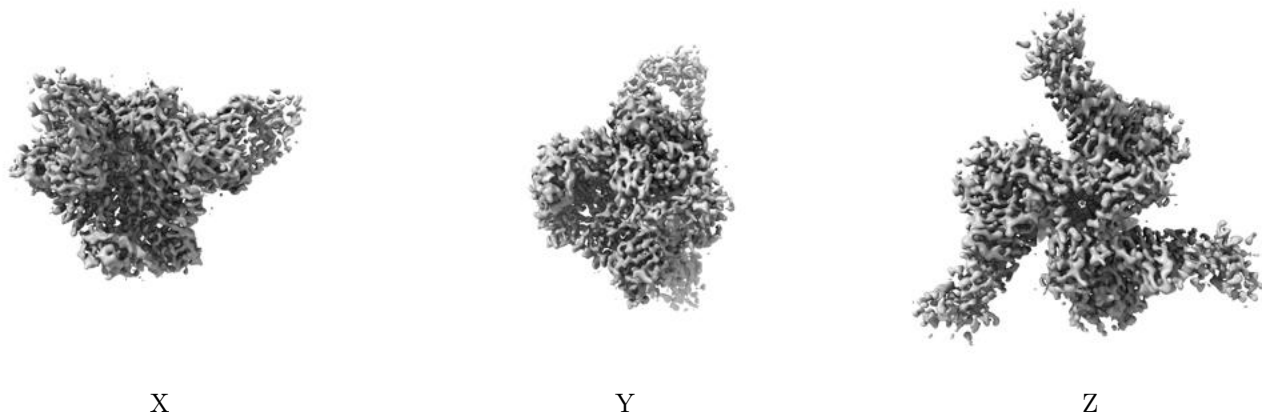
6.4.2 Raw map



The images above show the map standard deviation projections with false color in three orthogonal directions. Minimum values are shown in green, max in blue, and dark to light orange shades represent small to large values respectively.

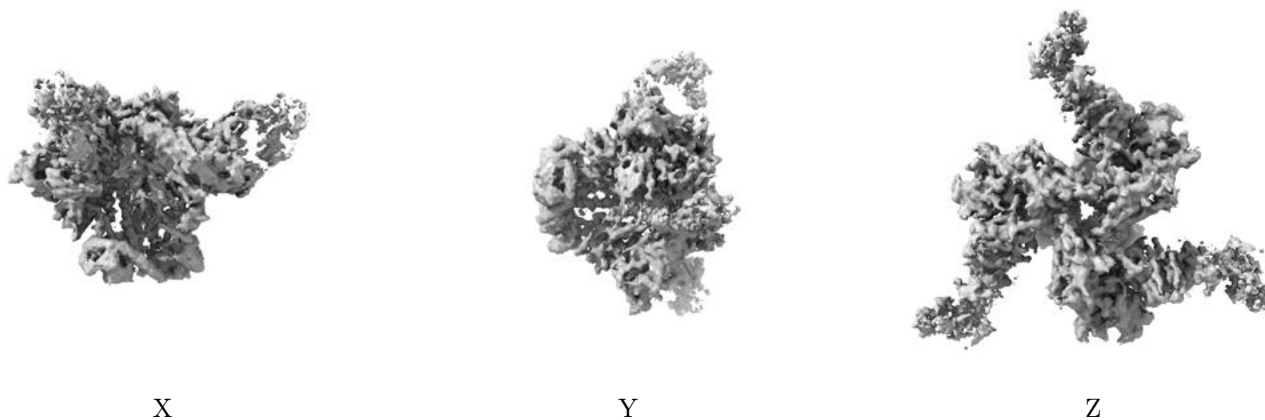
6.5 Orthogonal surface views [i](#)

6.5.1 Primary map



The images above show the 3D surface view of the map at the recommended contour level 1.28. These images, in conjunction with the slice images, may facilitate assessment of whether an appropriate contour level has been provided.

6.5.2 Raw map



These images show the 3D surface of the raw map. The raw map's contour level was selected so that its surface encloses the same volume as the primary map does at its recommended contour level.

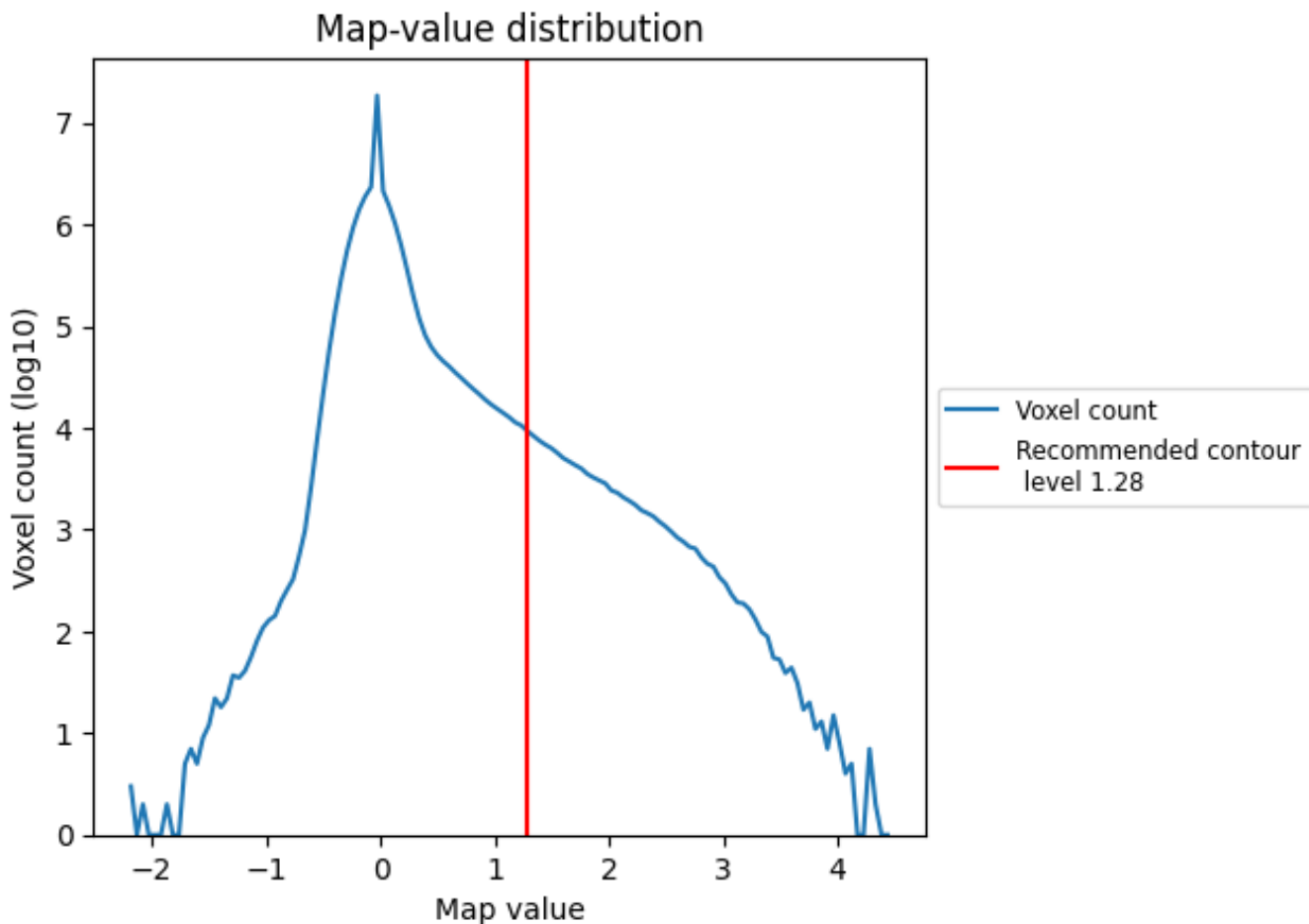
6.6 Mask visualisation [i](#)

This section was not generated. No masks/segmentation were deposited.

7 Map analysis [i](#)

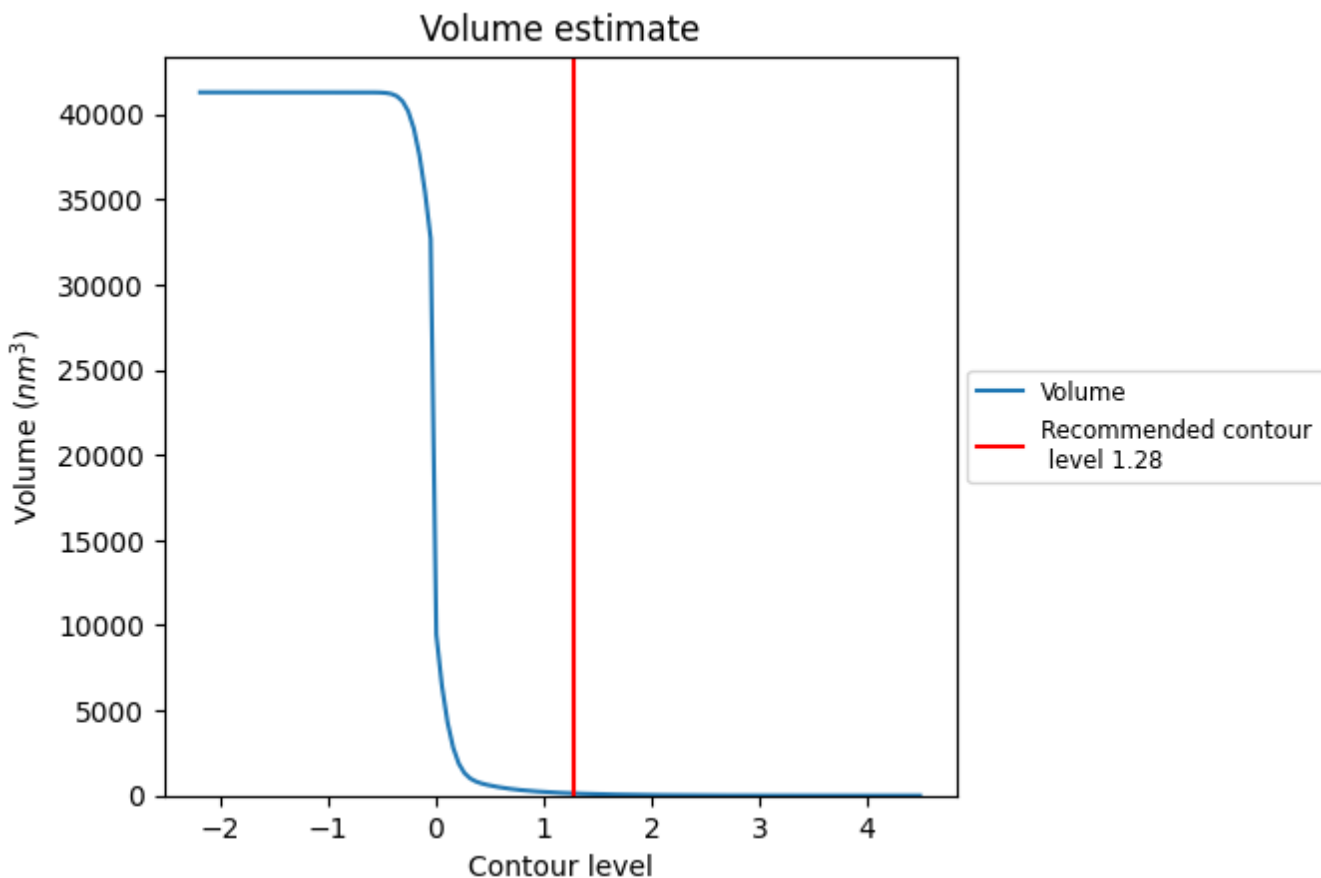
This section contains the results of statistical analysis of the map.

7.1 Map-value distribution [i](#)



The map-value distribution is plotted in 128 intervals along the x-axis. The y-axis is logarithmic. A spike in this graph at zero usually indicates that the volume has been masked.

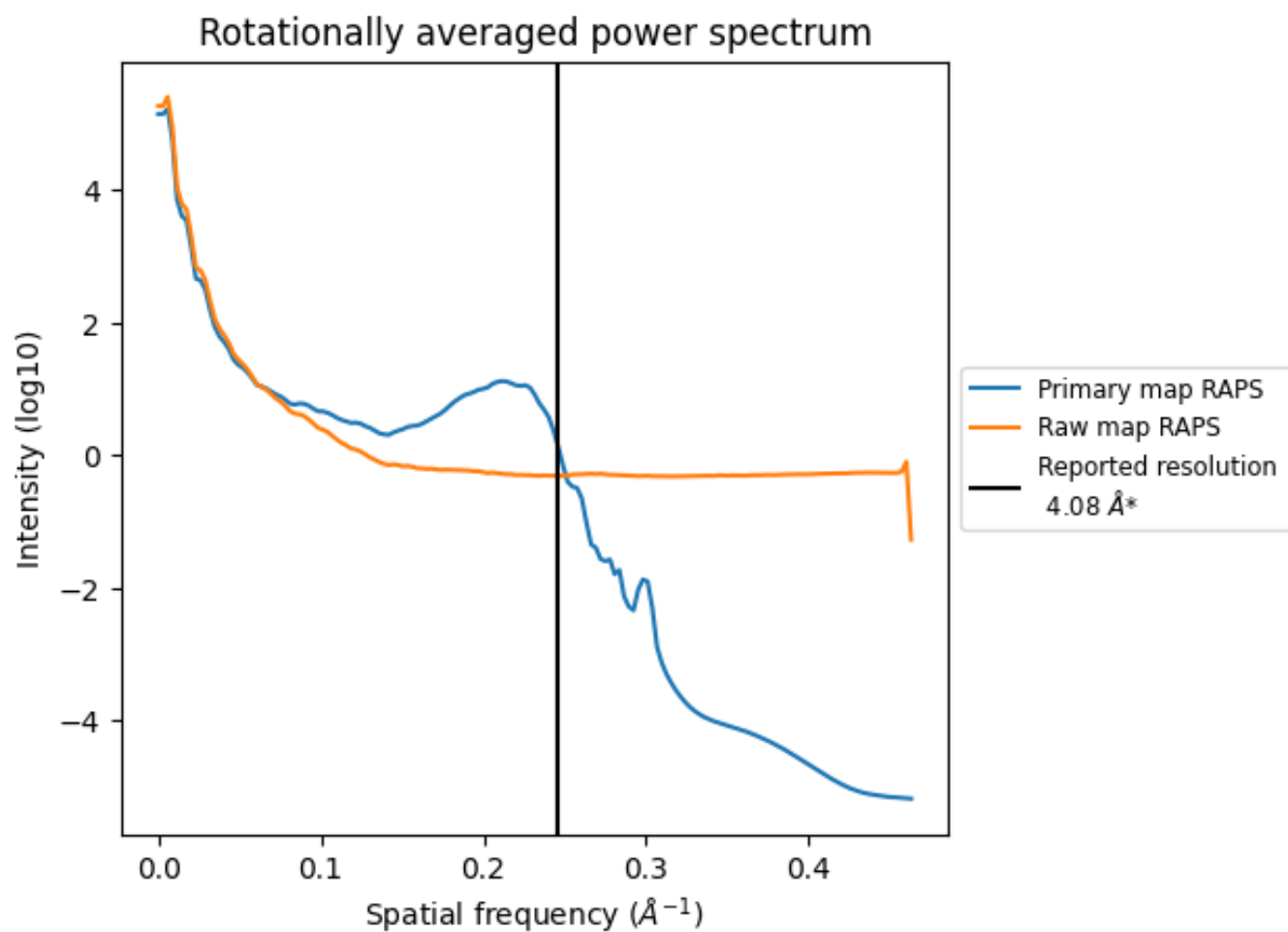
7.2 Volume estimate [\(i\)](#)



The volume at the recommended contour level is 127 nm³; this corresponds to an approximate mass of 114 kDa.

The volume estimate graph shows how the enclosed volume varies with the contour level. The recommended contour level is shown as a vertical line and the intersection between the line and the curve gives the volume of the enclosed surface at the given level.

7.3 Rotationally averaged power spectrum i

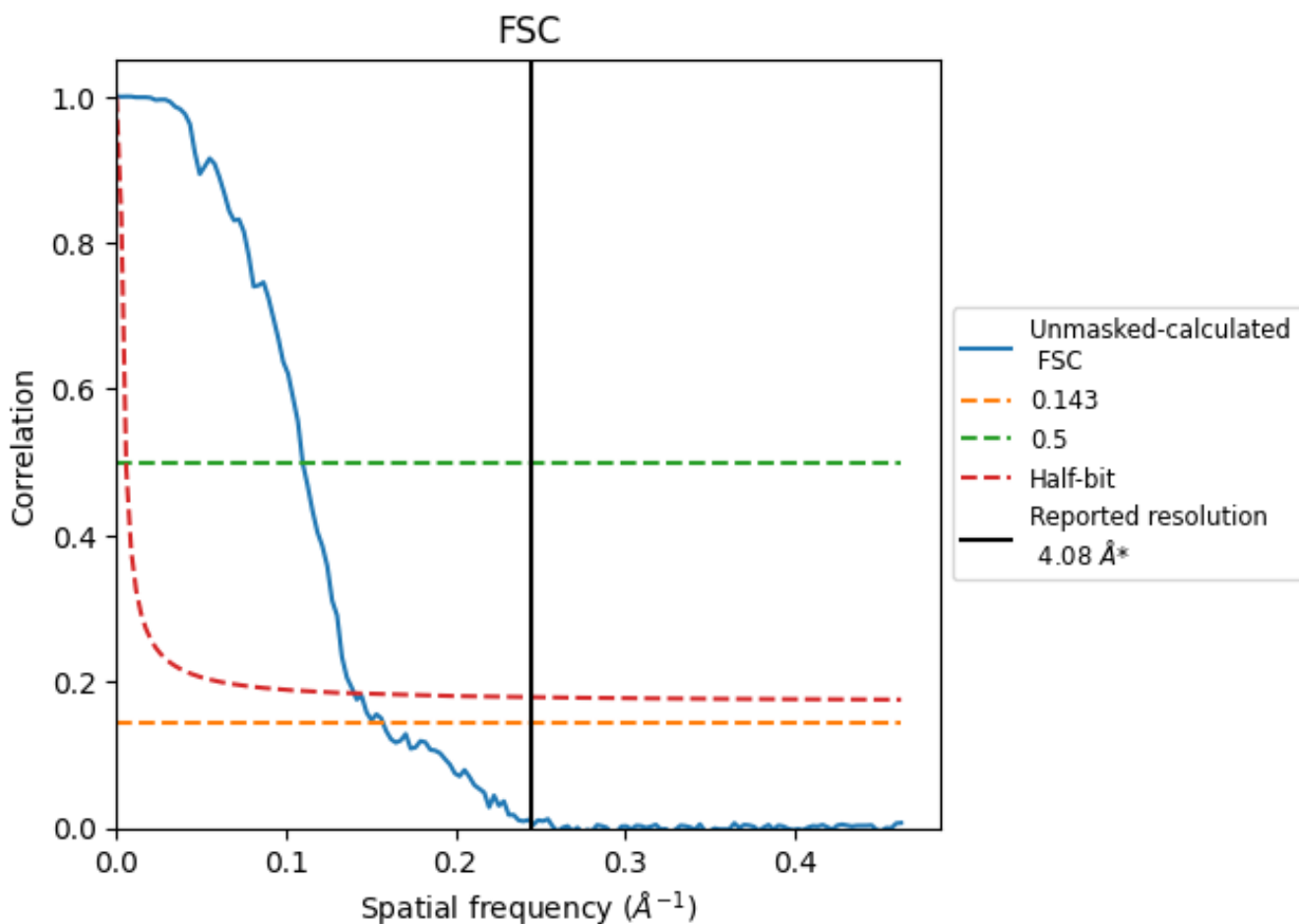


*Reported resolution corresponds to spatial frequency of 0.245 \AA^{-1}

8 Fourier-Shell correlation [i](#)

Fourier-Shell Correlation (FSC) is the most commonly used method to estimate the resolution of single-particle and subtomogram-averaged maps. The shape of the curve depends on the imposed symmetry, mask and whether or not the two 3D reconstructions used were processed from a common reference. The reported resolution is shown as a black line. A curve is displayed for the half-bit criterion in addition to lines showing the 0.143 gold standard cut-off and 0.5 cut-off.

8.1 FSC [i](#)



*Reported resolution corresponds to spatial frequency of 0.245 Å⁻¹

8.2 Resolution estimates [i](#)

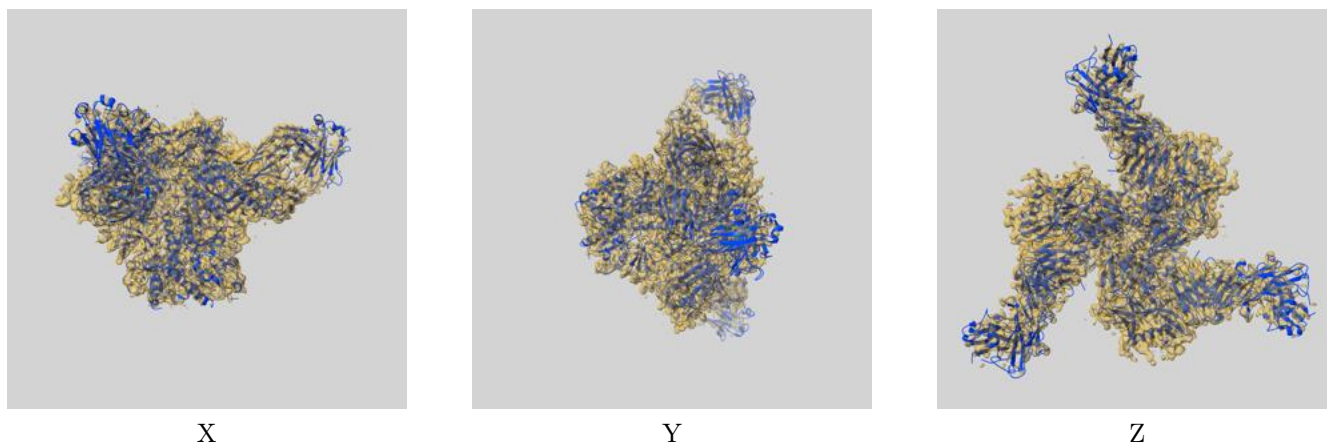
Resolution estimate (Å)	Estimation criterion (FSC cut-off)		
	0.143	0.5	Half-bit
Reported by author	4.08	-	-
Author-provided FSC curve	-	-	-
Unmasked-calculated*	6.35	9.11	7.13

*Resolution estimate based on FSC curve calculated by comparison of deposited half-maps. The value from deposited half-maps intersecting FSC 0.143 CUT-OFF 6.35 differs from the reported value 4.08 by more than 10 %

9 Map-model fit [i](#)

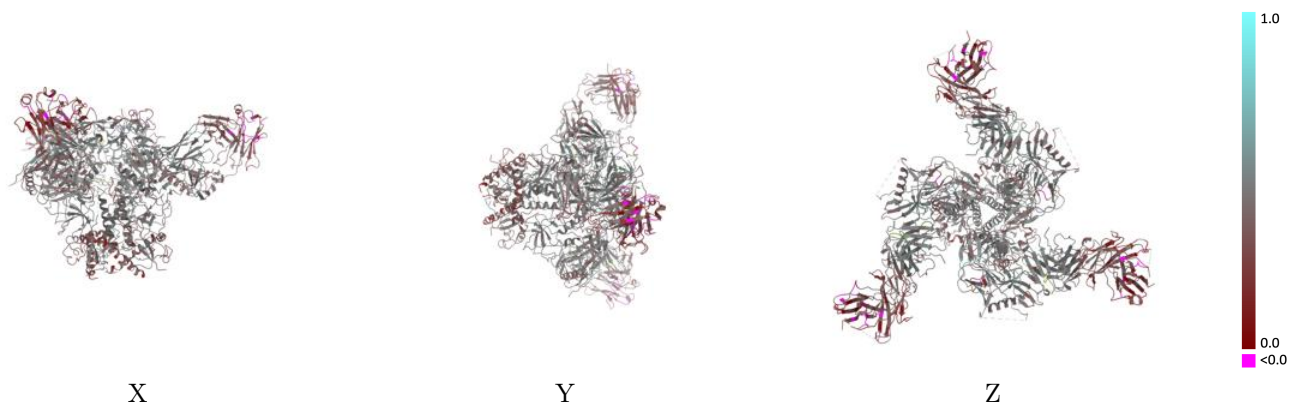
This section contains information regarding the fit between EMDB map EMD-43231 and PDB model 8VH1. Per-residue inclusion information can be found in section 3 on page 8.

9.1 Map-model overlay [i](#)



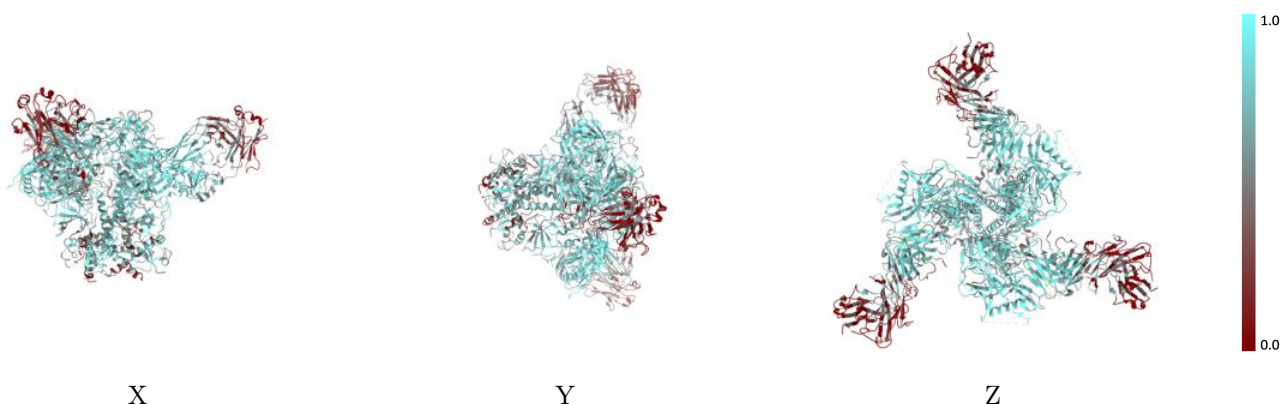
The images above show the 3D surface view of the map at the recommended contour level 1.28 at 50% transparency in yellow overlaid with a ribbon representation of the model coloured in blue. These images allow for the visual assessment of the quality of fit between the atomic model and the map.

9.2 Q-score mapped to coordinate model [i](#)



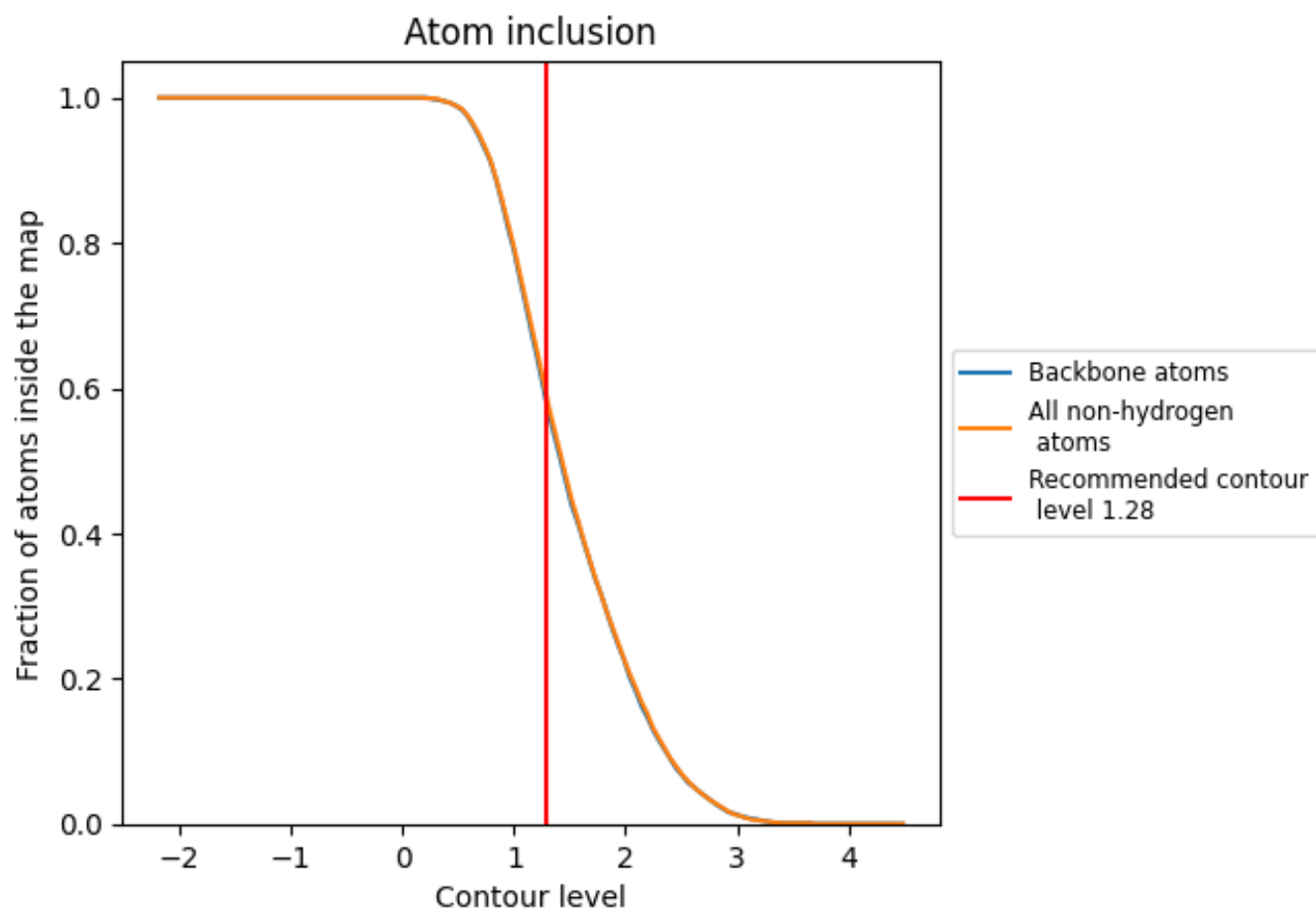
The images above show the model with each residue coloured according to its Q-score. This shows their resolvability in the map with higher Q-score values reflecting better resolvability. Please note: Q-score is calculating the resolvability of atoms, and thus high values are only expected at resolutions at which atoms can be resolved. Low Q-score values may therefore be expected for many entries.

9.3 Atom inclusion mapped to coordinate model [i](#)



The images above show the model with each residue coloured according to its atom inclusion. This shows to what extent they are inside the map at the recommended contour level (1.28).

























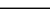
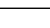
9.4 Atom inclusion [i](#)



At the recommended contour level, 59% of all backbone atoms, 60% of all non-hydrogen atoms, are inside the map.

9.5 Map-model fit summary

The table lists the average atom inclusion at the recommended contour level (1.28) and Q-score for the entire model and for each chain.

Chain	Atom inclusion	Q-score
All	 0.5980	 0.4040
A	 0.7390	 0.4500
B	 0.5430	 0.3530
C	 0.5200	 0.3910
D	 0.4160	 0.3510
E	 0.7400	 0.4490
F	 0.5370	 0.3570
G	 0.5170	 0.3910
H	 0.4200	 0.3510
I	 0.7390	 0.4490
J	 0.5330	 0.3550
K	 0.5290	 0.3890
L	 0.4170	 0.3510

