



wwPDB X-ray Structure Validation Summary Report ⓘ

Apr 7, 2022 – 10:20 AM EDT

PDB ID : 5VER
Title : MOUSE KYNURENINE AMINOTRANSFERASE III, RE-REFINEMENT OF THE PDB STRUCTURE 3E2Z
Authors : Wlodawer, A.; Dauter, Z.; Minor, W.; Stanfield, R.; Porebski, P.; Jaskolski, M.; Pozharski, E.; Weichenberger, C.X.; Rupp, B.
Deposited on : 2017-04-05
Resolution : 2.81 Å(reported)

This is a wwPDB X-ray Structure Validation Summary Report for a publicly released PDB entry.

We welcome your comments at validation@mail.wwpdb.org

A user guide is available at

<https://www.wwpdb.org/validation/2017/XrayValidationReportHelp>

with specific help available everywhere you see the ⓘ symbol.

The following versions of software and data (see [references ⓘ](#)) were used in the production of this report:

MolProbity : 4.02b-467
Mogul : 1.8.5 (274361), CSD as541be (2020)
Xtriage (Phenix) : 1.13
EDS : 2.27
Percentile statistics : 20191225.v01 (using entries in the PDB archive December 25th 2019)
Refmac : 5.8.0158
CCP4 : 7.0.044 (Gargrove)
Ideal geometry (proteins) : Engh & Huber (2001)
Ideal geometry (DNA, RNA) : Parkinson et al. (1996)
Validation Pipeline (wwPDB-VP) : 2.27

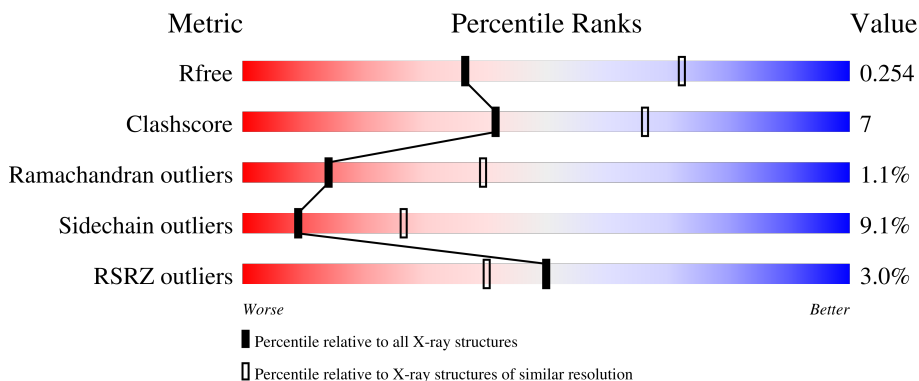
1 Overall quality at a glance

The following experimental techniques were used to determine the structure:

X-RAY DIFFRACTION

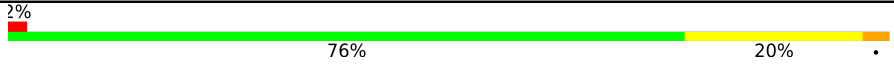

The reported resolution of this entry is 2.81 Å.

Percentile scores (ranging between 0-100) for global validation metrics of the entry are shown in the following graphic. The table shows the number of entries on which the scores are based.



Metric	Whole archive (#Entries)	Similar resolution (#Entries, resolution range(Å))
R_{free}	130704	3617 (2.84-2.80)
Clashscore	141614	4060 (2.84-2.80)
Ramachandran outliers	138981	3978 (2.84-2.80)
Sidechain outliers	138945	3980 (2.84-2.80)
RSRZ outliers	127900	3552 (2.84-2.80)

The table below summarises the geometric issues observed across the polymeric chains and their fit to the electron density. The red, orange, yellow and green segments of the lower bar indicate the fraction of residues that contain outliers for ≥ 3 , 2, 1 and 0 types of geometric quality criteria respectively. A grey segment represents the fraction of residues that are not modelled. The numeric value for each fraction is indicated below the corresponding segment, with a dot representing fractions $\leq 5\%$. The upper red bar (where present) indicates the fraction of residues that have poor fit to the electron density. The numeric value is given above the bar.

Mol	Chain	Length	Quality of chain
1	A	410	 2% 76% 20%
1	B	410	 4% 80% 16%

2 Entry composition [i](#)

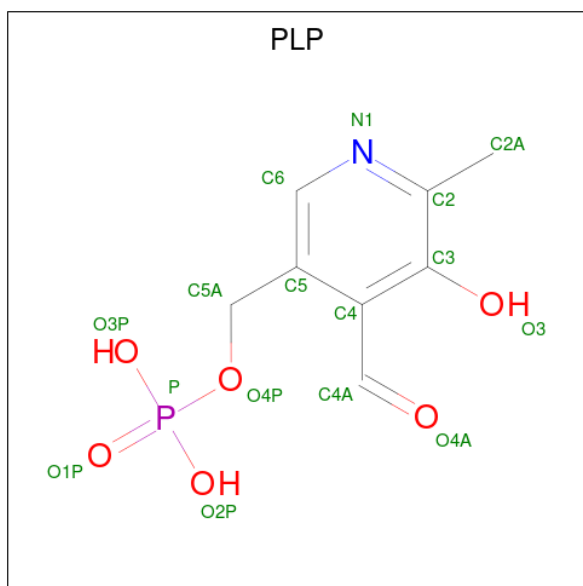
There are 9 unique types of molecules in this entry. The entry contains 6727 atoms, of which 0 are hydrogens and 0 are deuteriums.

In the tables below, the ZeroOcc column contains the number of atoms modelled with zero occupancy, the AltConf column contains the number of residues with at least one atom in alternate conformation and the Trace column contains the number of residues modelled with at most 2 atoms.

- Molecule 1 is a protein called Kynurenine--oxoglutarate transaminase 3.

Mol	Chain	Residues	Atoms					ZeroOcc	AltConf	Trace
			Total	C	N	O	S			
1	A	410	Total 3260	C 2107	N 536	O 599	S 18	0	1	0
1	B	410	Total 3260	C 2107	N 536	O 599	S 18	0	1	0

- Molecule 2 is PYRIDOXAL-5'-PHOSPHATE (three-letter code: PLP) (formula: C₈H₁₀NO₆P).



Mol	Chain	Residues	Atoms					ZeroOcc	AltConf
			Total	C	N	O	P		
2	A	1	Total 15	C 8	N 1	O 5	P 1	0	0

- Molecule 3 is 4-(2-HYDROXYETHYL)-1-PIPERAZINE ETHANESULFONIC ACID (three-letter code: EPE) (formula: C₈H₁₈N₂O₄S).



Mol	Chain	Residues	Atoms					ZeroOcc	AltConf
			Total	C	N	O	S		
3	A	1	15	8	2	4	1	0	0
3	B	1	15	8	2	4	1	0	0

- Molecule 4 is TRIETHYLENE GLYCOL (three-letter code: PGE) (formula: $C_6H_{14}O_4$).



Mol	Chain	Residues	Atoms			ZeroOcc	AltConf
			Total	C	O		
4	A	1	10	6	4	0	0

- Molecule 5 is GLYCEROL (three-letter code: GOL) (formula: $C_3H_8O_3$).

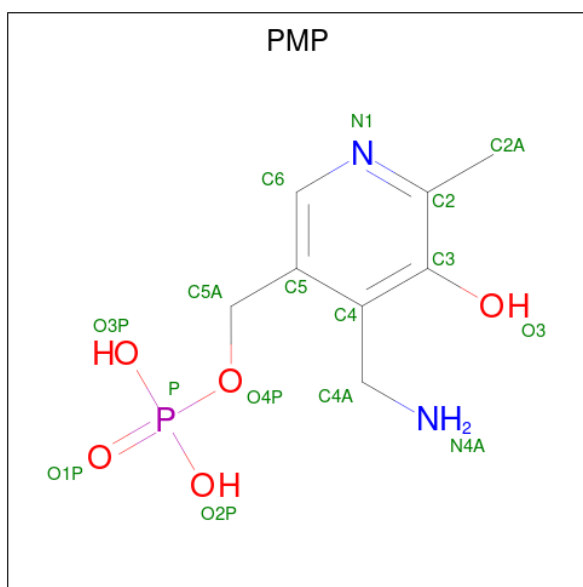


Mol	Chain	Residues	Atoms	ZeroOcc	AltConf
5	A	1	Total C O 6 3 3	0	0
5	A	1	Total C O 6 3 3	0	0
5	B	1	Total C O 6 3 3	0	0
5	B	1	Total C O 6 3 3	0	0

- Molecule 6 is CALCIUM ION (three-letter code: CA) (formula: Ca).

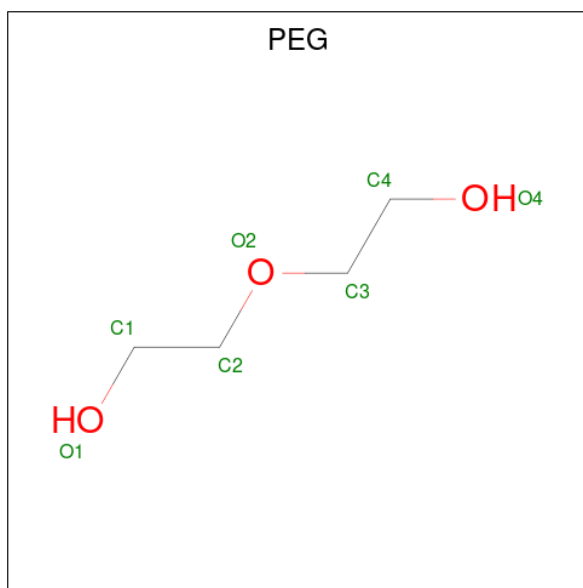
Mol	Chain	Residues	Atoms	ZeroOcc	AltConf
6	A	3	Total Ca 3 3	0	0
6	B	1	Total Ca 1 1	0	0

- Molecule 7 is 4'-DEOXY-4'-AMINOPYRIDOXAL-5'-PHOSPHATE (three-letter code: PMP) (formula: C₈H₁₃N₂O₅P).



Mol	Chain	Residues	Atoms					ZeroOcc	AltConf
			Total	C	N	O	P		
7	B	1	16	8	2	5	1	0	0

- Molecule 8 is DI(HYDROXYETHYL)ETHER (three-letter code: PEG) (formula: C₄H₁₀O₃).



Mol	Chain	Residues	Atoms			ZeroOcc	AltConf
			Total	C	O		
8	B	1	7	4	3	0	0

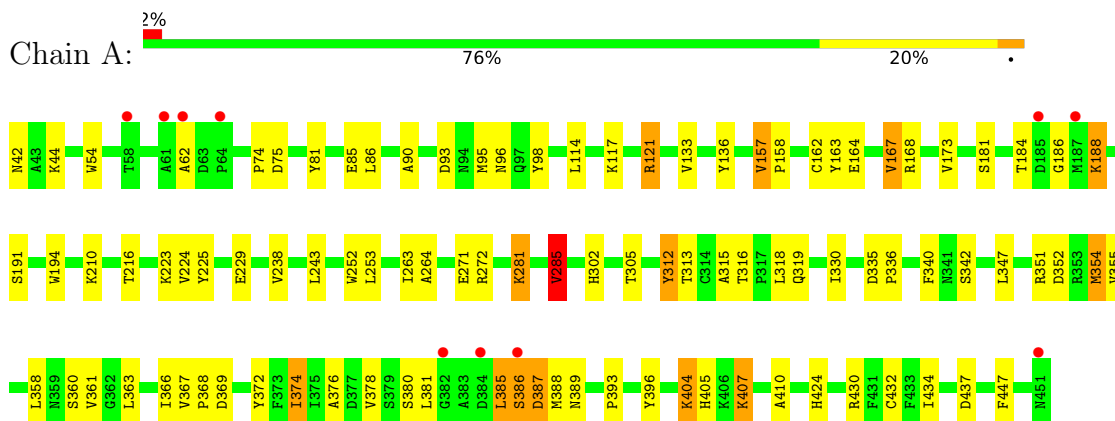
- Molecule 9 is water.

Mol	Chain	Residues	Atoms		ZeroOcc	AltConf
9	A	55	Total	O	0	0
			55	55		
9	B	46	Total	O	0	0
			46	46		

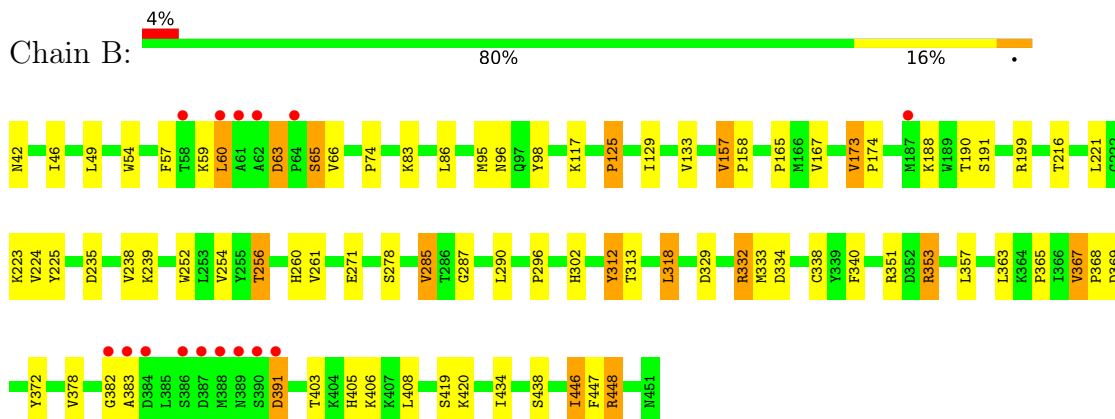
3 Residue-property plots [i](#)

These plots are drawn for all protein, RNA, DNA and oligosaccharide chains in the entry. The first graphic for a chain summarises the proportions of the various outlier classes displayed in the second graphic. The second graphic shows the sequence view annotated by issues in geometry and electron density. Residues are color-coded according to the number of geometric quality criteria for which they contain at least one outlier: green = 0, yellow = 1, orange = 2 and red = 3 or more. A red dot above a residue indicates a poor fit to the electron density ($RSRZ > 2$). Stretches of 2 or more consecutive residues without any outlier are shown as a green connector. Residues present in the sample, but not in the model, are shown in grey.

- Molecule 1: Kynurenine--oxoglutarate transaminase 3



- Molecule 1: Kynurenine--oxoglutarate transaminase 3



4 Data and refinement statistics

Property	Value	Source
Space group	P 43 21 2	Depositor
Cell constants a, b, c, α , β , γ	91.49Å 91.49Å 233.50Å 90.00° 90.00° 90.00°	Depositor
Resolution (Å)	29.64 – 2.81 29.64 – 2.81	Depositor EDS
% Data completeness (in resolution range)	95.5 (29.64-2.81) 95.6 (29.64-2.81)	Depositor EDS
R_{merge}	(Not available)	Depositor
R_{sym}	(Not available)	Depositor
$\langle I/\sigma(I) \rangle$ ¹	2.03 (at 2.80Å)	Xtrriage
Refinement program	REFMAC	Depositor
R, R_{free}	0.162 , 0.252 0.165 , 0.254	Depositor DCC
R_{free} test set	1227 reflections (5.11%)	wwPDB-VP
Wilson B-factor (Å ²)	34.4	Xtrriage
Anisotropy	0.184	Xtrriage
Bulk solvent k_{sol} (e/Å ³), B_{sol} (Å ²)	0.37 , 40.7	EDS
L-test for twinning ²	$\langle L \rangle = 0.50$, $\langle L^2 \rangle = 0.33$	Xtrriage
Estimated twinning fraction	No twinning to report.	Xtrriage
F_o, F_c correlation	0.95	EDS
Total number of atoms	6727	wwPDB-VP
Average B, all atoms (Å ²)	30.0	wwPDB-VP

Xtrriage's analysis on translational NCS is as follows: *The largest off-origin peak in the Patterson function is 3.84% of the height of the origin peak. No significant pseudotranslation is detected.*

¹Intensities estimated from amplitudes.

²Theoretical values of $\langle |L| \rangle$, $\langle L^2 \rangle$ for acentric reflections are 0.5, 0.333 respectively for untwinned datasets, and 0.375, 0.2 for perfectly twinned datasets.

5 Model quality [i](#)

5.1 Standard geometry [i](#)

Bond lengths and bond angles in the following residue types are not validated in this section: PGE, PLP, GOL, CA, PEG, PMP, EPE

The Z score for a bond length (or angle) is the number of standard deviations the observed value is removed from the expected value. A bond length (or angle) with $|Z| > 5$ is considered an outlier worth inspection. RMSZ is the root-mean-square of all Z scores of the bond lengths (or angles).

Mol	Chain	Bond lengths		Bond angles	
		RMSZ	# Z >5	RMSZ	# Z >5
1	A	0.70	0/3353	0.91	5/4555 (0.1%)
1	B	0.69	0/3353	0.86	2/4555 (0.0%)
All	All	0.70	0/6706	0.89	7/9110 (0.1%)

Chiral center outliers are detected by calculating the chiral volume of a chiral center and verifying if the center is modelled as a planar moiety or with the opposite hand. A planarity outlier is detected by checking planarity of atoms in a peptide group, atoms in a mainchain group or atoms of a sidechain that are expected to be planar.

Mol	Chain	#Chirality outliers	#Planarity outliers
1	A	0	1
1	B	0	2
All	All	0	3

There are no bond length outliers.

The worst 5 of 7 bond angle outliers are listed below:

Mol	Chain	Res	Type	Atoms	Z	Observed(°)	Ideal(°)
1	A	281	LYS	CB-CA-C	5.87	122.15	110.40
1	A	285	VAL	CB-CA-C	5.56	121.97	111.40
1	A	75	ASP	CB-CG-OD1	5.47	123.22	118.30
1	B	63	ASP	CB-CG-OD1	5.29	123.07	118.30
1	B	95	MET	CG-SD-CE	5.25	108.60	100.20

There are no chirality outliers.

All (3) planarity outliers are listed below:

Mol	Chain	Res	Type	Group
1	A	387	ASP	Peptide

Continued on next page...

Continued from previous page...

Mol	Chain	Res	Type	Group
1	B	391	ASP	Peptide
1	B	57	PHE	Peptide

5.2 Too-close contacts

In the following table, the Non-H and H(model) columns list the number of non-hydrogen atoms and hydrogen atoms in the chain respectively. The H(added) column lists the number of hydrogen atoms added and optimized by MolProbity. The Clashes column lists the number of clashes within the asymmetric unit, whereas Symm-Clashes lists symmetry-related clashes.

Mol	Chain	Non-H	H(model)	H(added)	Clashes	Symm-Clashes
1	A	3260	0	3236	54	0
1	B	3260	0	3236	50	0
2	A	15	0	6	0	0
3	A	15	0	18	3	0
3	B	15	0	18	2	0
4	A	10	0	14	1	0
5	A	12	0	16	0	0
5	B	12	0	16	2	0
6	A	3	0	0	0	0
6	B	1	0	0	0	0
7	B	16	0	10	0	0
8	B	7	0	10	0	0
9	A	55	0	0	0	0
9	B	46	0	0	0	0
All	All	6727	0	6580	92	0

The all-atom clashscore is defined as the number of clashes found per 1000 atoms (including hydrogen atoms). The all-atom clashscore for this structure is 7.

The worst 5 of 92 close contacts within the same asymmetric unit are listed below, sorted by their clash magnitude.

Atom-1	Atom-2	Interatomic distance (Å)	Clash overlap (Å)
1:A:184:THR:HG22	1:A:186:GLY:H	1.29	0.95
1:A:121:ARG:HH11	1:A:121:ARG:HG2	1.42	0.84
1:A:352:ASP:O	1:A:355:VAL:HG12	1.83	0.79
1:A:351:ARG:HD2	1:A:368:PRO:HD2	1.67	0.75
1:A:404:LYS:HD2	1:A:405:HIS:CD2	2.25	0.72

There are no symmetry-related clashes.

5.3 Torsion angles [i](#)

5.3.1 Protein backbone [i](#)

In the following table, the Percentiles column shows the percent Ramachandran outliers of the chain as a percentile score with respect to all X-ray entries followed by that with respect to entries of similar resolution.

The Analysed column shows the number of residues for which the backbone conformation was analysed, and the total number of residues.

Mol	Chain	Analysed	Favoured	Allowed	Outliers	Percentiles	
1	A	409/410 (100%)	380 (93%)	25 (6%)	4 (1%)	15	42
1	B	409/410 (100%)	380 (93%)	24 (6%)	5 (1%)	13	37
All	All	818/820 (100%)	760 (93%)	49 (6%)	9 (1%)	14	39

5 of 9 Ramachandran outliers are listed below:

Mol	Chain	Res	Type
1	A	386	SER
1	A	93	ASP
1	B	312	TYR
1	A	312	TYR
1	B	383	ALA

5.3.2 Protein sidechains [i](#)

In the following table, the Percentiles column shows the percent sidechain outliers of the chain as a percentile score with respect to all X-ray entries followed by that with respect to entries of similar resolution.

The Analysed column shows the number of residues for which the sidechain conformation was analysed, and the total number of residues.

Mol	Chain	Analysed	Rotameric	Outliers	Percentiles	
1	A	359/358 (100%)	326 (91%)	33 (9%)	9	26
1	B	359/358 (100%)	327 (91%)	32 (9%)	9	27
All	All	718/716 (100%)	653 (91%)	65 (9%)	9	26

5 of 65 residues with a non-rotameric sidechain are listed below:

Mol	Chain	Res	Type
1	B	391	ASP

Continued on next page...

Continued from previous page...

Mol	Chain	Res	Type
1	B	408	LEU
1	A	372	TYR
1	A	367	VAL
1	B	419	SER

Sometimes sidechains can be flipped to improve hydrogen bonding and reduce clashes. All (1) such sidechains are listed below:

Mol	Chain	Res	Type
1	A	405	HIS

5.3.3 RNA [i](#)

There are no RNA molecules in this entry.

5.4 Non-standard residues in protein, DNA, RNA chains [i](#)

There are no non-standard protein/DNA/RNA residues in this entry.

5.5 Carbohydrates [i](#)

There are no monosaccharides in this entry.

5.6 Ligand geometry [i](#)

Of 14 ligands modelled in this entry, 4 are monoatomic - leaving 10 for Mogul analysis.

In the following table, the Counts columns list the number of bonds (or angles) for which Mogul statistics could be retrieved, the number of bonds (or angles) that are observed in the model and the number of bonds (or angles) that are defined in the Chemical Component Dictionary. The Link column lists molecule types, if any, to which the group is linked. The Z score for a bond length (or angle) is the number of standard deviations the observed value is removed from the expected value. A bond length (or angle) with $|Z| > 2$ is considered an outlier worth inspection. RMSZ is the root-mean-square of all Z scores of the bond lengths (or angles).

Mol	Type	Chain	Res	Link	Bond lengths			Bond angles		
					Counts	RMSZ	# Z > 2	Counts	RMSZ	# Z > 2
3	EPE	A	702	-	15,15,15	2.16	2 (13%)	18,20,20	2.18	5 (27%)
4	PGE	A	703	-	9,9,9	0.77	0	8,8,8	0.74	0
5	GOL	B	504	-	5,5,5	0.43	0	5,5,5	0.74	0

Mol	Type	Chain	Res	Link	Bond lengths			Bond angles		
					Counts	RMSZ	# Z > 2	Counts	RMSZ	# Z > 2
5	GOL	A	705	-	5,5,5	0.55	0	5,5,5	0.71	0
3	EPE	B	502	-	15,15,15	2.22	1 (6%)	18,20,20	1.51	3 (16%)
7	PMP	B	501	-	16,16,16	3.37	3 (18%)	21,23,23	1.55	5 (23%)
2	PLP	A	701	1	15,15,16	3.90	4 (26%)	20,22,23	1.75	5 (25%)
5	GOL	B	505	-	5,5,5	0.27	0	5,5,5	1.35	1 (20%)
8	PEG	B	503	-	6,6,6	0.71	0	5,5,5	0.33	0
5	GOL	A	704	-	5,5,5	0.43	0	5,5,5	0.60	0

In the following table, the Chirals column lists the number of chiral outliers, the number of chiral centers analysed, the number of these observed in the model and the number defined in the Chemical Component Dictionary. Similar counts are reported in the Torsion and Rings columns. '-' means no outliers of that kind were identified.

Mol	Type	Chain	Res	Link	Chirals	Torsions	Rings
3	EPE	A	702	-	-	1/9/19/19	0/1/1/1
4	PGE	A	703	-	-	6/7/7/7	-
5	GOL	B	504	-	-	2/4/4/4	-
5	GOL	A	705	-	-	3/4/4/4	-
3	EPE	B	502	-	-	3/9/19/19	0/1/1/1
7	PMP	B	501	-	-	5/8/8/8	0/1/1/1
2	PLP	A	701	1	-	0/6/6/8	0/1/1/1
5	GOL	B	505	-	-	4/4/4/4	-
8	PEG	B	503	-	-	1/4/4/4	-
5	GOL	A	704	-	-	2/4/4/4	-

The worst 5 of 10 bond length outliers are listed below:

Mol	Chain	Res	Type	Atoms	Z	Observed(Å)	Ideal(Å)
2	A	701	PLP	C5-C4	10.35	1.51	1.40
7	B	501	PMP	C3-C2	9.79	1.50	1.40
2	A	701	PLP	C3-C2	9.46	1.50	1.40
3	B	502	EPE	C10-S	-8.13	1.65	1.77
3	A	702	EPE	C10-S	-7.83	1.66	1.77

The worst 5 of 19 bond angle outliers are listed below:

Mol	Chain	Res	Type	Atoms	Z	Observed(°)	Ideal(°)
3	A	702	EPE	C6-N1-C2	4.78	119.59	108.83
3	A	702	EPE	O2S-S-C10	4.15	111.91	106.92

Continued on next page...

Continued from previous page...

Mol	Chain	Res	Type	Atoms	Z	Observed(°)	Ideal(°)
2	A	701	PLP	O3P-P-O4P	-3.30	97.95	106.73
7	B	501	PMP	C3-C4-C5	-3.14	115.71	118.72
2	A	701	PLP	C6-N1-C2	3.06	124.84	119.17

There are no chirality outliers.

5 of 27 torsion outliers are listed below:

Mol	Chain	Res	Type	Atoms
3	A	702	EPE	S-C10-C9-N1
3	B	502	EPE	C8-C7-N4-C5
5	A	704	GOL	O1-C1-C2-O2
5	A	704	GOL	O1-C1-C2-C3
5	A	705	GOL	O1-C1-C2-O2

There are no ring outliers.

4 monomers are involved in 8 short contacts:

Mol	Chain	Res	Type	Clashes	Symm-Clashes
3	A	702	EPE	3	0
4	A	703	PGE	1	0
5	B	504	GOL	2	0
3	B	502	EPE	2	0

5.7 Other polymers [i](#)

There are no such residues in this entry.

5.8 Polymer linkage issues [i](#)

There are no chain breaks in this entry.

6 Fit of model and data [i](#)

6.1 Protein, DNA and RNA chains [i](#)

In the following table, the column labelled ‘#RSRZ > 2’ contains the number (and percentage) of RSRZ outliers, followed by percent RSRZ outliers for the chain as percentile scores relative to all X-ray entries and entries of similar resolution. The OWAB column contains the minimum, median, 95th percentile and maximum values of the occupancy-weighted average B-factor per residue. The column labelled ‘Q < 0.9’ lists the number of (and percentage) of residues with an average occupancy less than 0.9.

Mol	Chain	Analysed	<RSRZ>	#RSRZ>2	OWAB(Å ²)	Q<0.9
1	A	410/410 (100%)	-0.48	10 (2%) 59 49	13, 25, 61, 111	0
1	B	410/410 (100%)	-0.40	15 (3%) 41 31	14, 27, 70, 109	0
All	All	820/820 (100%)	-0.44	25 (3%) 50 40	13, 26, 62, 111	0

The worst 5 of 25 RSRZ outliers are listed below:

Mol	Chain	Res	Type	RSRZ
1	B	386	SER	5.0
1	B	58	THR	4.8
1	B	384	ASP	4.4
1	A	382	GLY	4.2
1	B	382	GLY	4.1

6.2 Non-standard residues in protein, DNA, RNA chains [i](#)

There are no non-standard protein/DNA/RNA residues in this entry.

6.3 Carbohydrates [i](#)

There are no monosaccharides in this entry.

6.4 Ligands [i](#)

In the following table, the Atoms column lists the number of modelled atoms in the group and the number defined in the chemical component dictionary. The B-factors column lists the minimum, median, 95th percentile and maximum values of B factors of atoms in the group. The column labelled ‘Q < 0.9’ lists the number of atoms with occupancy less than 0.9.

Mol	Type	Chain	Res	Atoms	RSCC	RSR	B-factors(\AA^2)	Q<0.9
5	GOL	B	504	6/6	0.89	0.21	41,42,46,54	0
5	GOL	A	705	6/6	0.92	0.21	34,47,57,63	0
4	PGE	A	703	10/10	0.92	0.16	29,38,45,47	0
8	PEG	B	503	7/7	0.92	0.16	31,33,40,46	0
5	GOL	B	505	6/6	0.94	0.16	28,31,33,45	0
6	CA	A	708	1/1	0.95	0.08	48,48,48,48	0
5	GOL	A	704	6/6	0.95	0.15	21,23,31,37	0
3	EPE	B	502	15/15	0.97	0.14	29,40,51,55	0
6	CA	A	706	1/1	0.98	0.03	32,32,32,32	1
2	PLP	A	701	15/16	0.98	0.17	14,24,32,34	0
7	PMP	B	501	16/16	0.98	0.18	21,32,39,43	0
3	EPE	A	702	15/15	0.98	0.13	18,30,46,46	0
6	CA	A	707	1/1	0.99	0.03	33,33,33,33	0
6	CA	B	506	1/1	0.99	0.04	32,32,32,32	0

6.5 Other polymers [i](#)

There are no such residues in this entry.