



Full wwPDB X-ray Structure Validation Report ⓘ

Dec 19, 2023 – 08:52 PM EST

PDB ID : 1V2E
Title : Crystal Structure of T.th HB8 Glutamine Aminotransferase complex with a-keto-g-methylthiobutyrate
Authors : Goto, M.; RIKEN Structural Genomics/Proteomics Initiative (RSGI)
Deposited on : 2003-10-15
Resolution : 2.60 Å(reported)

This is a Full wwPDB X-ray Structure Validation Report for a publicly released PDB entry.

We welcome your comments at validation@mail.wwpdb.org

A user guide is available at

<https://www.wwpdb.org/validation/2017/XrayValidationReportHelp>

with specific help available everywhere you see the ⓘ symbol.

The types of validation reports are described at

<http://www.wwpdb.org/validation/2017/FAQs#types>.

The following versions of software and data (see [references ⓘ](#)) were used in the production of this report:

MolProbity : 4.02b-467
Mogul : 1.8.5 (274361), CSD as541be (2020)
Xtriage (Phenix) : 1.13
EDS : 2.36
Percentile statistics : 20191225.v01 (using entries in the PDB archive December 25th 2019)
Refmac : 5.8.0158
CCP4 : 7.0.044 (Gargrove)
Ideal geometry (proteins) : Engh & Huber (2001)
Ideal geometry (DNA, RNA) : Parkinson et al. (1996)
Validation Pipeline (wwPDB-VP) : 2.36

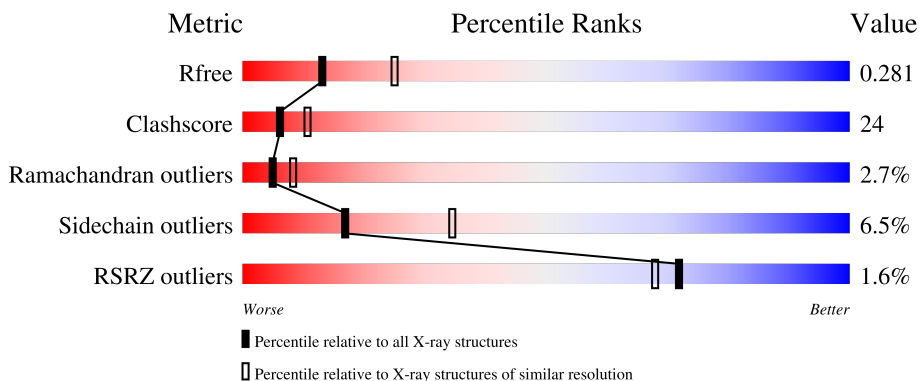
1 Overall quality at a glance

The following experimental techniques were used to determine the structure:

X-RAY DIFFRACTION

The reported resolution of this entry is 2.60 Å.

Percentile scores (ranging between 0-100) for global validation metrics of the entry are shown in the following graphic. The table shows the number of entries on which the scores are based.



Metric	Whole archive (#Entries)	Similar resolution (#Entries, resolution range(Å))
R_{free}	130704	3163 (2.60-2.60)
Clashscore	141614	3518 (2.60-2.60)
Ramachandran outliers	138981	3455 (2.60-2.60)
Sidechain outliers	138945	3455 (2.60-2.60)
RSRZ outliers	127900	3104 (2.60-2.60)

The table below summarises the geometric issues observed across the polymeric chains and their fit to the electron density. The red, orange, yellow and green segments of the lower bar indicate the fraction of residues that contain outliers for ≥ 3 , 2, 1 and 0 types of geometric quality criteria respectively. A grey segment represents the fraction of residues that are not modelled. The numeric value for each fraction is indicated below the corresponding segment, with a dot representing fractions $\leq 5\%$. The upper red bar (where present) indicates the fraction of residues that have poor fit to the electron density. The numeric value is given above the bar.

Mol	Chain	Length	Quality of chain
1	A	381	
1	B	381	

The following table lists non-polymeric compounds, carbohydrate monomers and non-standard residues in protein, DNA, RNA chains that are outliers for geometric or electron-density-fit criteria:

Mol	Type	Chain	Res	Chirality	Geometry	Clashes	Electron density
3	KMT	A	520	-	X	-	-
3	KMT	B	1520	-	X	-	-

2 Entry composition [i](#)

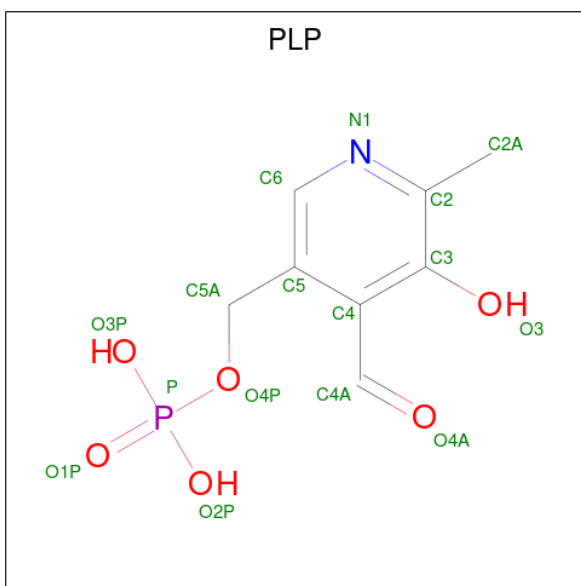
There are 4 unique types of molecules in this entry. The entry contains 5930 atoms, of which 0 are hydrogens and 0 are deuteriums.

In the tables below, the ZeroOcc column contains the number of atoms modelled with zero occupancy, the AltConf column contains the number of residues with at least one atom in alternate conformation and the Trace column contains the number of residues modelled with at most 2 atoms.

- Molecule 1 is a protein called Glutamine Aminotransferase.

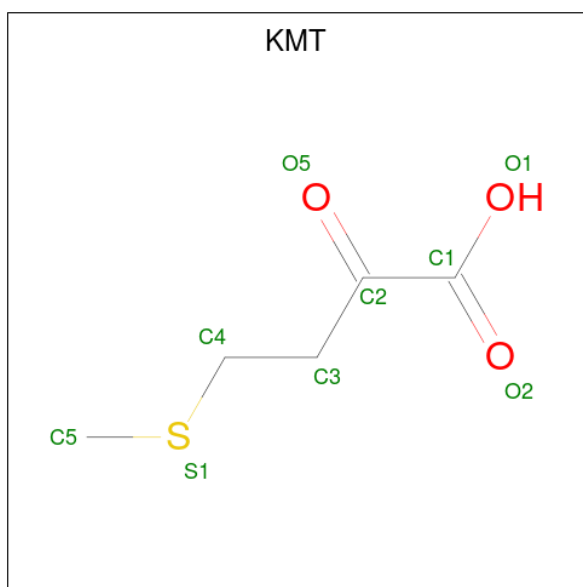
Mol	Chain	Residues	Atoms					ZeroOcc	AltConf	Trace
			Total	C	N	O	S			
1	A	368	Total 2901	C 1864	N 513	O 516	S 8	0	0	0
1	B	367	Total 2894	C 1859	N 512	O 515	S 8	0	0	0

- Molecule 2 is PYRIDOXAL-5'-PHOSPHATE (three-letter code: PLP) (formula: C₈H₁₀NO₆P).



Mol	Chain	Residues	Atoms					ZeroOcc	AltConf
			Total	C	N	O	P		
2	A	1	Total 15	C 8	N 1	O 5	P 1	0	0
2	B	1	Total 15	C 8	N 1	O 5	P 1	0	0

- Molecule 3 is 4-(METHYLSULFANYL)-2-OXOBUTANOIC ACID (three-letter code: KMT) (formula: C₅H₈O₃S).



Mol	Chain	Residues	Atoms				ZeroOcc	AltConf
3	A	1	Total	C	O	S	0	0
			9	5	3	1		
3	B	1	Total	C	O	S	0	0
			9	5	3	1		

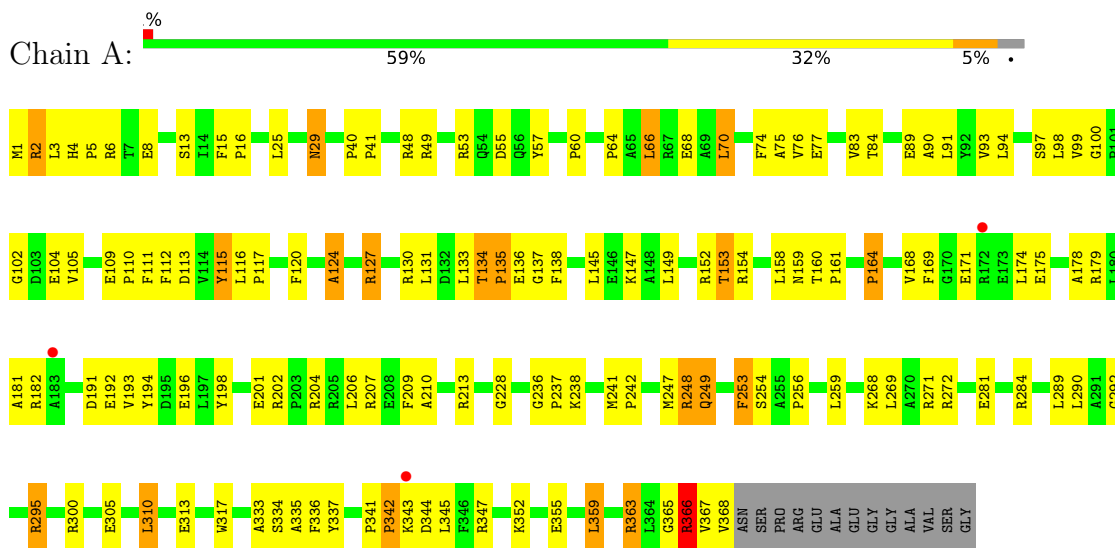
- Molecule 4 is water.

Mol	Chain	Residues	Atoms		ZeroOcc	AltConf
4	A	44	Total	O	0	0
			44	44		
4	B	43	Total	O	0	0
			43	43		

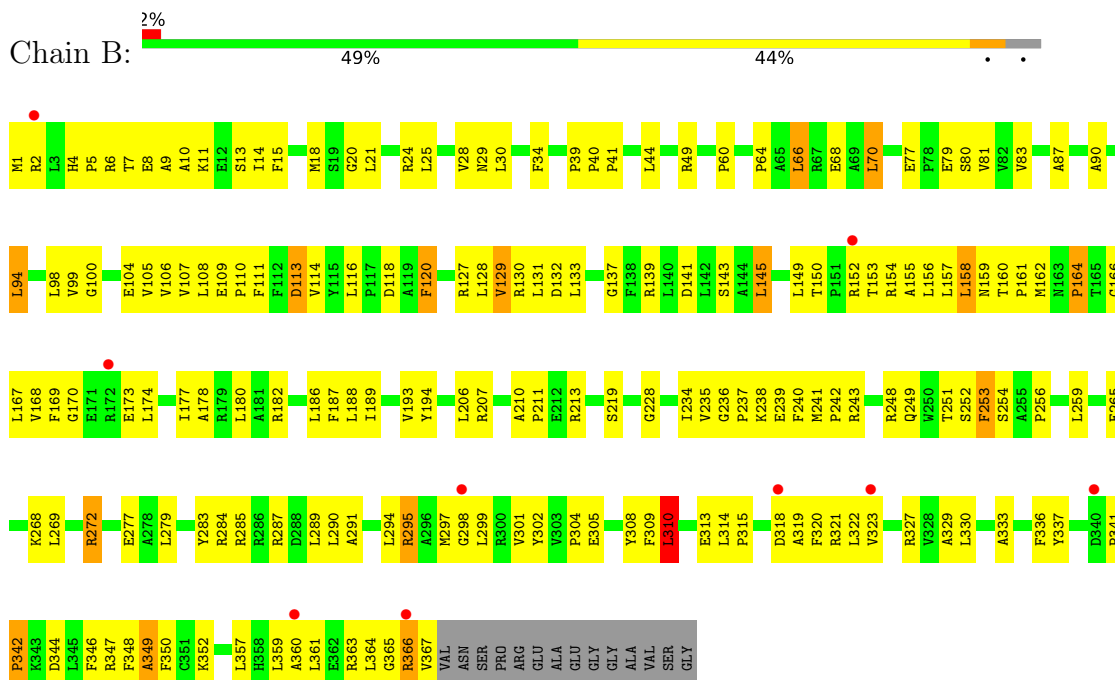
3 Residue-property plots i

These plots are drawn for all protein, RNA, DNA and oligosaccharide chains in the entry. The first graphic for a chain summarises the proportions of the various outlier classes displayed in the second graphic. The second graphic shows the sequence view annotated by issues in geometry and electron density. Residues are color-coded according to the number of geometric quality criteria for which they contain at least one outlier: green = 0, yellow = 1, orange = 2 and red = 3 or more. A red dot above a residue indicates a poor fit to the electron density ($RSRZ > 2$). Stretches of 2 or more consecutive residues without any outlier are shown as a green connector. Residues present in the sample, but not in the model, are shown in grey.

• Molecule 1: Glutamine Aminotransferase



• Molecule 1: Glutamine Aminotransferase



4 Data and refinement statistics i

Property	Value	Source
Space group	P 31 2 1	Depositor
Cell constants a, b, c, α , β , γ	123.14Å 123.14Å 122.96Å 90.00° 90.00° 120.00°	Depositor
Resolution (Å)	10.00 – 2.60 30.79 – 2.60	Depositor EDS
% Data completeness (in resolution range)	(Not available) (10.00-2.60) 98.1 (30.79-2.60)	Depositor EDS
R_{merge}	(Not available)	Depositor
R_{sym}	(Not available)	Depositor
$\langle I/\sigma(I) \rangle$ ¹	5.06 (at 2.61Å)	Xtrriage
Refinement program	CNS 1.0	Depositor
R, R_{free}	0.231 , 0.286 0.226 , 0.281	Depositor DCC
R_{free} test set	3279 reflections (9.97%)	wwPDB-VP
Wilson B-factor (Å ²)	39.9	Xtrriage
Anisotropy	0.149	Xtrriage
Bulk solvent k_{sol} (e/Å ³), B_{sol} (Å ²)	0.31 , 59.8	EDS
L-test for twinning ²	$\langle L \rangle = 0.50$, $\langle L^2 \rangle = 0.33$	Xtrriage
Estimated twinning fraction	0.018 for -h,-k,l	Xtrriage
F_o, F_c correlation	0.92	EDS
Total number of atoms	5930	wwPDB-VP
Average B, all atoms (Å ²)	41.0	wwPDB-VP

Xtrriage's analysis on translational NCS is as follows: *The largest off-origin peak in the Patterson function is 2.69% of the height of the origin peak. No significant pseudotranslation is detected.*

¹Intensities estimated from amplitudes.

²Theoretical values of $\langle |L| \rangle$, $\langle L^2 \rangle$ for acentric reflections are 0.5, 0.333 respectively for untwinned datasets, and 0.375, 0.2 for perfectly twinned datasets.

5 Model quality

5.1 Standard geometry

Bond lengths and bond angles in the following residue types are not validated in this section: PLP, KMT

The Z score for a bond length (or angle) is the number of standard deviations the observed value is removed from the expected value. A bond length (or angle) with $|Z| > 5$ is considered an outlier worth inspection. RMSZ is the root-mean-square of all Z scores of the bond lengths (or angles).

Mol	Chain	Bond lengths		Bond angles	
		RMSZ	# Z >5	RMSZ	# Z >5
1	A	0.39	0/2971	0.66	0/4031
1	B	0.37	0/2964	0.65	0/4021
All	All	0.38	0/5935	0.65	0/8052

There are no bond length outliers.

There are no bond angle outliers.

There are no chirality outliers.

There are no planarity outliers.

5.2 Too-close contacts

In the following table, the Non-H and H(model) columns list the number of non-hydrogen atoms and hydrogen atoms in the chain respectively. The H(added) column lists the number of hydrogen atoms added and optimized by MolProbity. The Clashes column lists the number of clashes within the asymmetric unit, whereas Symm-Clashes lists symmetry-related clashes.

Mol	Chain	Non-H	H(model)	H(added)	Clashes	Symm-Clashes
1	A	2901	0	2929	131	0
1	B	2894	0	2920	175	0
2	A	15	0	7	0	0
2	B	15	0	7	2	0
3	A	9	0	7	0	0
3	B	9	0	7	1	0
4	A	44	0	0	3	0
4	B	43	0	0	5	1
All	All	5930	0	5877	287	1

The all-atom clashscore is defined as the number of clashes found per 1000 atoms (including hydrogen atoms). The all-atom clashscore for this structure is 24.

All (287) close contacts within the same asymmetric unit are listed below, sorted by their clash magnitude.

Atom-1	Atom-2	Interatomic distance (Å)	Clash overlap (Å)
1:B:158:LEU:HD21	1:B:169:PHE:HE1	1.29	0.98
1:B:158:LEU:HD13	1:B:159:ASN:H	1.33	0.93
1:A:268:LYS:HE2	1:A:268:LYS:HA	1.53	0.90
1:A:174:LEU:HD12	1:A:206:LEU:HD13	1.56	0.87
1:B:39:PRO:HG2	1:B:44:LEU:HD21	1.60	0.82
1:B:114:VAL:HG12	1:B:118:ASP:OD2	1.77	0.81
1:A:249:GLN:HE22	1:B:13:SER:H	1.26	0.80
1:A:66:LEU:HD13	1:A:83:VAL:HG21	1.64	0.80
1:B:314:LEU:HG	4:B:1559:HOH:O	1.81	0.79
1:B:158:LEU:HD21	1:B:169:PHE:CE1	2.16	0.79
1:B:5:PRO:O	1:B:8:GLU:HG3	1.82	0.78
1:B:178:ALA:O	1:B:182:ARG:HG3	1.83	0.78
1:A:168:VAL:HG23	1:A:305:GLU:HB2	1.67	0.77
1:A:66:LEU:HD22	1:A:70:LEU:HD22	1.65	0.77
1:B:158:LEU:HD13	1:B:159:ASN:N	2.01	0.75
1:B:313:GLU:HA	1:B:344:ASP:O	1.87	0.73
1:A:49:ARG:O	1:A:53:ARG:HD3	1.88	0.73
1:B:188:LEU:HD13	1:B:206:LEU:HD21	1.70	0.72
1:B:174:LEU:HD12	1:B:206:LEU:HD13	1.71	0.72
1:A:337:TYR:CE2	1:A:342:PRO:HD2	2.25	0.71
1:B:8:GLU:O	1:B:11:LYS:HE3	1.90	0.71
1:B:109:GLU:HB3	1:B:130:ARG:HA	1.71	0.71
1:A:178:ALA:HB1	1:A:210:ALA:HB2	1.73	0.70
1:A:158:LEU:HD12	1:A:206:LEU:HD22	1.71	0.70
1:B:168:VAL:HG23	1:B:305:GLU:HB2	1.74	0.70
1:A:99:VAL:HG11	1:A:105:VAL:HG22	1.74	0.70
1:B:295:ARG:HE	1:B:301:VAL:HB	1.59	0.68
1:A:158:LEU:HD22	1:A:169:PHE:HE1	1.60	0.66
1:A:249:GLN:HE22	1:B:13:SER:N	1.93	0.66
1:B:158:LEU:HD11	1:B:169:PHE:CD1	2.31	0.66
1:B:290:LEU:O	1:B:294:LEU:HG	1.96	0.66
1:A:292:GLY:HA2	1:A:295:ARG:NH1	2.10	0.66
1:A:363:ARG:HD3	4:A:529:HOH:O	1.94	0.66
1:A:109:GLU:O	1:A:131:LEU:HD13	1.96	0.66
1:B:108:LEU:HD13	1:B:131:LEU:HD11	1.78	0.65
1:A:295:ARG:HH11	1:A:295:ARG:HB2	1.59	0.65
1:B:299:LEU:HD13	1:B:313:GLU:O	1.97	0.65
1:B:186:LEU:O	1:B:213:ARG:HD3	1.97	0.65
1:B:80:SER:HB2	1:B:236:GLY:O	1.97	0.65
1:A:159:ASN:HD22	1:A:191:ASP:HB3	1.62	0.64

Continued on next page...

Continued from previous page...

Atom-1	Atom-2	Interatomic distance (Å)	Clash overlap (Å)
1:B:359:LEU:O	1:B:359:LEU:HD22	1.98	0.64
1:B:156:LEU:HD23	1:B:157:LEU:H	1.63	0.64
1:B:314:LEU:HD13	1:B:346:PHE:HB2	1.80	0.63
1:B:318:ASP:OD2	1:B:321:ARG:HB3	1.98	0.63
1:B:337:TYR:HB2	1:B:341:PRO:HB3	1.79	0.63
1:B:360:ALA:O	1:B:364:LEU:HG	1.97	0.63
1:A:295:ARG:HH11	1:A:295:ARG:CB	2.12	0.62
1:A:102:GLY:O	1:A:152:ARG:HG2	2.01	0.61
1:B:297:MET:HE1	1:B:361:LEU:O	2.01	0.60
1:B:159:ASN:OD1	1:B:162:MET:HA	2.01	0.60
1:B:109:GLU:OE1	1:B:128:LEU:HD13	2.02	0.60
1:A:337:TYR:HB2	1:A:341:PRO:HB3	1.84	0.60
1:A:99:VAL:HB	1:A:124:ALA:HB2	1.84	0.59
1:B:361:LEU:O	1:B:364:LEU:HB2	2.00	0.59
1:A:333:ALA:HB2	1:A:345:LEU:O	2.01	0.59
1:A:366:ARG:HG2	1:A:366:ARG:HH11	1.66	0.59
1:A:305:GLU:HB3	4:A:533:HOH:O	2.03	0.59
1:B:194:TYR:HE2	2:B:1510:PLP:HO3	1.50	0.58
1:B:29:ASN:HA	1:B:329:ALA:HB3	1.83	0.58
1:B:155:ALA:HB2	1:B:187:PHE:HB2	1.85	0.57
1:A:109:GLU:OE1	1:A:130:ARG:NE	2.37	0.57
1:B:14:ILE:HG23	1:B:15:PHE:N	2.19	0.57
1:A:135:PRO:HB3	1:A:300:ARG:HH21	1.69	0.57
1:A:3:LEU:CD1	1:B:243:ARG:HG3	2.35	0.57
1:A:178:ALA:O	1:A:182:ARG:HG3	2.05	0.57
1:A:238:LYS:HA	1:A:241:MET:HG2	1.87	0.57
1:A:66:LEU:HD22	1:A:70:LEU:CD2	2.32	0.56
1:B:66:LEU:HD13	1:B:83:VAL:HG21	1.86	0.56
1:B:99:VAL:HG11	1:B:105:VAL:CG2	2.36	0.56
1:B:173:GLU:O	1:B:177:ILE:HG13	2.06	0.56
1:A:135:PRO:HB3	1:A:300:ARG:NH2	2.20	0.56
1:A:64:PRO:O	1:A:68:GLU:HG3	2.06	0.56
1:A:160:THR:HA	1:A:161:PRO:C	2.25	0.56
1:A:367:VAL:O	1:A:368:VAL:O	2.24	0.56
1:A:249:GLN:NE2	1:B:13:SER:H	2.02	0.56
1:A:271:ARG:HB2	1:A:272:ARG:NH1	2.22	0.55
1:B:66:LEU:HD22	1:B:70:LEU:HD22	1.88	0.55
1:B:120:PHE:CD1	1:B:120:PHE:C	2.80	0.55
1:B:289:LEU:HD22	1:B:357:LEU:HD13	1.88	0.55
1:B:310:LEU:C	1:B:310:LEU:HD23	2.27	0.55
1:B:365:GLY:C	1:B:367:VAL:H	2.10	0.55

Continued on next page...

Continued from previous page...

Atom-1	Atom-2	Interatomic distance (Å)	Clash overlap (Å)
1:B:80:SER:HA	1:B:241:MET:HG3	1.88	0.55
1:B:94:LEU:HD13	1:B:234:ILE:HD13	1.87	0.55
1:B:109:GLU:HG2	1:B:337:TYR:CD1	2.42	0.54
1:B:111:PHE:CZ	1:B:116:LEU:HD22	2.43	0.54
1:A:366:ARG:HG2	1:A:366:ARG:NH1	2.23	0.54
1:B:77:GLU:HG2	1:B:79:GLU:HG2	1.90	0.54
1:B:238:LYS:HA	1:B:241:MET:HG2	1.89	0.54
1:A:154:ARG:HG2	1:A:154:ARG:HH11	1.73	0.54
1:A:3:LEU:HD11	1:B:243:ARG:HG3	1.89	0.54
1:A:147:LYS:O	1:A:147:LYS:HG2	2.06	0.54
1:B:279:LEU:O	1:B:283:TYR:HD1	1.92	0.53
1:B:359:LEU:O	1:B:363:ARG:HG3	2.09	0.53
1:A:133:LEU:HD13	1:A:138:PHE:CE1	2.44	0.53
1:B:160:THR:HA	1:B:161:PRO:C	2.29	0.53
1:B:104:GLU:CD	1:B:127:ARG:HH12	2.11	0.52
1:B:310:LEU:HD23	1:B:310:LEU:O	2.08	0.52
1:A:160:THR:O	1:A:192:GLU:HG2	2.10	0.52
1:A:13:SER:H	1:B:249:GLN:HE22	1.57	0.52
1:A:134:THR:HG23	1:A:137:GLY:O	2.10	0.52
1:A:256:PRO:HA	1:B:228:GLY:O	2.09	0.52
1:B:77:GLU:CG	1:B:79:GLU:HG2	2.40	0.52
1:A:248:ARG:HD3	1:A:248:ARG:C	2.30	0.51
1:B:20:GLY:O	1:B:24:ARG:HB2	2.10	0.51
1:B:268:LYS:HD3	1:B:272:ARG:NH2	2.26	0.51
1:B:79:GLU:CD	1:B:79:GLU:H	2.14	0.51
1:B:110:PRO:HB2	1:B:336:PHE:HB3	1.91	0.51
1:B:145:LEU:HD22	1:B:180:LEU:CD1	2.41	0.51
1:A:99:VAL:O	1:B:6:ARG:NH2	2.44	0.51
1:A:253:PHE:CZ	3:B:1520:KMT:S1	3.04	0.51
1:A:149:LEU:N	1:A:149:LEU:HD12	2.26	0.51
1:A:196:GLU:OE2	1:A:271:ARG:NH2	2.43	0.51
1:B:9:ALA:O	1:B:11:LYS:N	2.38	0.50
1:A:2:ARG:HH11	1:A:2:ARG:HG2	1.75	0.50
1:B:127:ARG:NH2	1:B:127:ARG:HB2	2.26	0.50
1:B:318:ASP:O	1:B:322:LEU:HD12	2.10	0.50
1:A:134:THR:C	1:A:136:GLU:H	2.14	0.50
1:A:209:PHE:H	1:A:209:PHE:HD1	1.59	0.50
1:B:109:GLU:OE2	1:B:337:TYR:HD1	1.93	0.50
1:B:158:LEU:HD11	1:B:169:PHE:CE1	2.46	0.50
1:A:182:ARG:HG2	1:A:213:ARG:HE	1.76	0.50
1:B:366:ARG:O	1:B:367:VAL:HG23	2.11	0.50

Continued on next page...

Continued from previous page...

Atom-1	Atom-2	Interatomic distance (Å)	Clash overlap (Å)
1:A:365:GLY:O	1:A:367:VAL:N	2.45	0.50
1:A:110:PRO:HB2	1:A:336:PHE:HB3	1.93	0.49
1:B:28:VAL:HG23	1:B:363:ARG:HH21	1.75	0.49
1:B:289:LEU:C	1:B:289:LEU:HD23	2.32	0.49
1:A:60:PRO:HA	1:A:254:SER:HB3	1.95	0.49
1:B:108:LEU:HB2	4:B:1526:HOH:O	2.12	0.49
1:A:209:PHE:CD1	1:A:209:PHE:N	2.81	0.49
1:A:66:LEU:HD13	1:A:83:VAL:CG2	2.39	0.49
1:A:105:VAL:HG23	1:A:124:ALA:HB1	1.95	0.49
1:B:314:LEU:HD13	1:B:346:PHE:CD1	2.47	0.49
1:A:317:TRP:CZ2	1:A:367:VAL:HG12	2.47	0.49
1:B:64:PRO:O	1:B:68:GLU:HG3	2.12	0.49
1:A:365:GLY:C	1:A:367:VAL:H	2.15	0.49
1:A:310:LEU:C	1:A:310:LEU:HD23	2.33	0.49
1:B:106:VAL:HG23	1:B:153:THR:CG2	2.43	0.49
1:B:314:LEU:N	1:B:314:LEU:HD12	2.28	0.49
1:B:237:PRO:HG2	1:B:240:PHE:HD2	1.77	0.48
1:B:129:VAL:HG12	1:B:129:VAL:O	2.14	0.48
1:A:272:ARG:HG2	1:A:272:ARG:HH11	1.79	0.48
1:A:333:ALA:HB2	1:A:345:LEU:HB3	1.96	0.48
1:B:323:VAL:O	1:B:323:VAL:HG22	2.14	0.48
1:A:109:GLU:HA	1:A:110:PRO:C	2.33	0.48
1:A:4:HIS:CD2	1:B:100:GLY:HA3	2.49	0.48
1:B:169:PHE:CD2	1:B:169:PHE:N	2.81	0.48
1:A:1:MET:CE	1:B:213:ARG:HH11	2.27	0.48
1:B:295:ARG:NE	1:B:301:VAL:HB	2.25	0.48
1:B:309:PHE:O	1:B:350:PHE:HE2	1.97	0.48
1:A:158:LEU:HD22	1:A:169:PHE:CE1	2.46	0.47
1:B:168:VAL:CG2	1:B:305:GLU:HB2	2.43	0.47
1:A:198:TYR:OH	1:A:202:ARG:NH2	2.46	0.47
1:B:49:ARG:NH1	1:B:265:GLU:OE2	2.36	0.47
1:B:107:VAL:HG12	1:B:108:LEU:O	2.15	0.47
1:B:166:GLY:HA3	1:B:304:PRO:CB	2.45	0.47
1:B:361:LEU:HA	1:B:364:LEU:HD12	1.96	0.47
1:B:14:ILE:CG2	1:B:15:PHE:N	2.77	0.47
1:B:170:GLY:O	1:B:174:LEU:HD23	2.15	0.47
1:A:363:ARG:O	1:A:367:VAL:HG23	2.15	0.47
1:B:66:LEU:HD22	1:B:70:LEU:CD2	2.45	0.47
1:A:343:LYS:O	1:A:344:ASP:HB2	2.15	0.46
1:B:132:ASP:HB2	1:B:139:ARG:HB3	1.97	0.46
1:B:268:LYS:CA	1:B:268:LYS:HE2	2.45	0.46

Continued on next page...

Continued from previous page...

Atom-1	Atom-2	Interatomic distance (Å)	Clash overlap (Å)
1:A:120:PHE:C	1:A:120:PHE:CD1	2.89	0.46
1:B:314:LEU:CD1	1:B:346:PHE:HB2	2.45	0.46
1:B:160:THR:HA	1:B:162:MET:N	2.31	0.46
1:B:295:ARG:O	1:B:298:GLY:N	2.49	0.46
1:A:97:SER:O	1:A:98:LEU:HD23	2.15	0.46
1:A:130:ARG:HE	1:A:130:ARG:HB2	1.61	0.46
1:B:268:LYS:HE2	1:B:268:LYS:HA	1.98	0.46
1:B:104:GLU:OE1	1:B:152:ARG:HB2	2.16	0.46
1:A:182:ARG:NH1	1:A:209:PHE:O	2.48	0.46
1:B:90:ALA:O	1:B:94:LEU:HB2	2.16	0.46
1:A:25:LEU:HD22	4:A:531:HOH:O	2.16	0.46
1:A:55:ASP:OD2	1:B:39:PRO:HD2	2.16	0.46
1:A:249:GLN:NE2	1:B:13:SER:OG	2.49	0.46
1:B:109:GLU:O	1:B:131:LEU:HD13	2.16	0.45
1:B:268:LYS:HE2	1:B:268:LYS:N	2.31	0.45
1:A:91:LEU:HD11	1:A:191:ASP:OD2	2.16	0.45
1:B:164:PRO:CB	1:B:347:ARG:HD3	2.46	0.45
1:B:207:ARG:HD3	4:B:1562:HOH:O	2.16	0.45
1:A:104:GLU:HG3	1:A:152:ARG:HB3	1.99	0.45
1:B:320:PHE:HD1	1:B:320:PHE:H	1.59	0.45
1:B:366:ARG:O	1:B:367:VAL:CG2	2.65	0.45
1:B:15:PHE:CE2	1:B:113:ASP:OD2	2.70	0.45
1:A:4:HIS:NE2	1:B:100:GLY:HA3	2.31	0.45
1:B:34:PHE:CD1	1:B:34:PHE:O	2.69	0.45
1:B:315:PRO:HA	1:B:344:ASP:OD1	2.16	0.44
1:B:120:PHE:C	1:B:120:PHE:HD1	2.20	0.44
1:B:277:GLU:HB2	4:B:1528:HOH:O	2.17	0.44
1:B:329:ALA:O	1:B:330:LEU:HD23	2.18	0.44
1:B:149:LEU:HD21	1:B:186:LEU:HD11	1.99	0.44
1:B:210:ALA:N	1:B:211:PRO:CD	2.81	0.44
1:B:21:LEU:HG	1:B:25:LEU:CD1	2.48	0.44
1:B:133:LEU:HD11	1:B:302:TYR:CE2	2.53	0.44
1:B:193:VAL:HG12	1:B:219:SER:HB3	1.99	0.44
1:B:291:ALA:HB1	1:B:301:VAL:HG11	1.99	0.44
1:A:1:MET:HE1	1:B:213:ARG:HH11	1.81	0.44
1:A:40:PRO:HA	1:A:41:PRO:HD3	1.91	0.44
1:A:90:ALA:O	1:A:94:LEU:HB2	2.18	0.44
1:A:313:GLU:HA	1:A:344:ASP:O	2.17	0.44
1:B:106:VAL:HG23	1:B:153:THR:HG23	2.00	0.44
1:A:15:PHE:HB2	1:A:16:PRO:CD	2.48	0.44
1:A:236:GLY:O	1:A:237:PRO:C	2.56	0.43

Continued on next page...

Continued from previous page...

Atom-1	Atom-2	Interatomic distance (Å)	Clash overlap (Å)
1:B:109:GLU:HA	1:B:110:PRO:C	2.39	0.43
1:B:169:PHE:N	1:B:169:PHE:HD2	2.15	0.43
1:B:98:LEU:HD12	1:B:189:ILE:HD11	2.00	0.43
1:A:48:ARG:HG3	1:A:48:ARG:HH11	1.84	0.43
1:A:168:VAL:CG2	1:A:305:GLU:HB2	2.44	0.43
1:B:25:LEU:HD13	1:B:323:VAL:O	2.18	0.43
1:B:60:PRO:HA	1:B:254:SER:HB3	2.01	0.43
1:B:299:LEU:HD11	4:B:1559:HOH:O	2.18	0.43
1:A:359:LEU:O	1:A:363:ARG:HG3	2.17	0.43
1:B:137:GLY:HA2	1:B:302:TYR:HD2	1.83	0.43
1:B:241:MET:HB2	1:B:242:PRO:HD3	2.01	0.43
1:B:249:GLN:O	1:B:253:PHE:HA	2.19	0.43
1:B:333:ALA:HA	1:B:336:PHE:HD2	1.83	0.43
1:B:21:LEU:HG	1:B:25:LEU:HD12	2.01	0.43
1:B:87:ALA:O	1:B:90:ALA:N	2.50	0.43
1:B:365:GLY:O	1:B:367:VAL:N	2.49	0.43
1:A:228:GLY:O	1:B:256:PRO:HA	2.18	0.43
1:A:84:THR:HA	1:A:248:ARG:NH2	2.34	0.43
1:A:97:SER:OG	1:A:247:MET:HG3	2.18	0.43
1:A:272:ARG:HA	1:A:272:ARG:HD3	1.80	0.43
1:B:302:TYR:N	1:B:302:TYR:CD1	2.87	0.43
1:B:87:ALA:O	1:B:90:ALA:HB3	2.19	0.42
1:A:13:SER:H	1:B:249:GLN:NE2	2.17	0.42
1:A:74:PHE:O	1:A:75:ALA:HB3	2.18	0.42
1:A:281:GLU:CD	1:A:284:ARG:HH12	2.22	0.42
1:B:141:ASP:OD2	1:B:143:SER:HB2	2.20	0.42
1:B:159:ASN:O	1:B:162:MET:HA	2.19	0.42
1:A:366:ARG:HD2	1:A:366:ARG:O	2.19	0.42
1:A:164:PRO:HB3	1:A:347:ARG:HD3	2.01	0.42
1:A:29:ASN:O	1:A:352:LYS:HE3	2.19	0.42
1:A:171:GLU:OE1	1:A:204:ARG:NE	2.53	0.42
1:B:268:LYS:HA	1:B:272:ARG:HH21	1.83	0.42
1:A:4:HIS:ND1	1:A:5:PRO:HD2	2.35	0.42
1:A:289:LEU:HD23	1:A:289:LEU:C	2.39	0.42
1:B:167:LEU:HD12	1:B:305:GLU:OE2	2.20	0.42
1:A:116:LEU:HB2	1:A:117:PRO:HD3	2.02	0.42
1:B:99:VAL:HG11	1:B:105:VAL:HG23	2.02	0.42
1:B:156:LEU:HD23	1:B:157:LEU:N	2.30	0.42
1:A:272:ARG:NH1	1:A:272:ARG:HG2	2.34	0.42
1:B:81:VAL:HG22	1:B:235:VAL:HG22	2.02	0.42
1:B:154:ARG:NH1	1:B:154:ARG:HG2	2.35	0.42

Continued on next page...

Continued from previous page...

Atom-1	Atom-2	Interatomic distance (Å)	Clash overlap (Å)
1:B:194:TYR:HE2	2:B:1510:PLP:O3	2.02	0.42
1:A:193:VAL:HG23	1:A:194:TYR:CD2	2.55	0.41
1:B:30:LEU:N	1:B:30:LEU:HD23	2.35	0.41
1:B:127:ARG:HH11	1:B:150:THR:HG23	1.85	0.41
1:A:77:GLU:OE2	1:A:238:LYS:HD2	2.19	0.41
1:A:111:PHE:CZ	1:A:116:LEU:HD22	2.54	0.41
1:A:112:PHE:HB3	1:A:115:TYR:CZ	2.56	0.41
1:A:341:PRO:O	1:A:342:PRO:C	2.59	0.41
1:B:164:PRO:HB3	1:B:347:ARG:HD3	2.02	0.41
1:A:104:GLU:OE1	1:A:127:ARG:HD3	2.20	0.41
1:A:179:ARG:HG3	1:A:179:ARG:HH11	1.86	0.41
1:A:238:LYS:O	1:A:242:PRO:HD3	2.19	0.41
1:A:171:GLU:O	1:A:175:GLU:HG3	2.20	0.41
1:A:256:PRO:HB2	1:A:259:LEU:HB2	2.01	0.41
1:B:114:VAL:CG1	1:B:118:ASP:OD2	2.60	0.41
1:B:319:ALA:O	1:B:322:LEU:HB2	2.20	0.41
1:A:76:VAL:CG1	1:A:207:ARG:NH2	2.83	0.41
1:A:367:VAL:O	1:A:367:VAL:HG12	2.20	0.41
1:B:8:GLU:OE2	1:B:120:PHE:HZ	2.04	0.41
1:A:94:LEU:HD12	1:A:94:LEU:HA	1.95	0.41
1:A:99:VAL:HG11	1:A:105:VAL:CG2	2.46	0.41
1:A:104:GLU:HB2	1:A:153:THR:HA	2.03	0.41
1:A:281:GLU:OE1	1:A:284:ARG:NH1	2.54	0.41
1:B:141:ASP:C	1:B:143:SER:N	2.75	0.41
1:B:149:LEU:CD2	1:B:186:LEU:HD11	2.50	0.41
1:B:252:SER:O	1:B:254:SER:N	2.54	0.41
1:B:348:PHE:O	1:B:349:ALA:HB2	2.21	0.41
1:A:333:ALA:C	1:A:335:ALA:H	2.23	0.41
1:B:24:ARG:HE	1:B:24:ARG:HB3	1.66	0.41
1:A:100:GLY:HA3	1:B:4:HIS:NE2	2.36	0.40
1:B:30:LEU:HD22	1:B:352:LYS:HG3	2.03	0.40
1:B:284:ARG:O	1:B:287:ARG:HB3	2.21	0.40
1:B:327:ARG:HA	1:B:327:ARG:HD3	1.85	0.40
1:A:6:ARG:C	1:A:8:GLU:H	2.24	0.40
1:B:164:PRO:HB2	1:B:347:ARG:CD	2.51	0.40
1:A:181:ALA:HB1	1:A:213:ARG:HD2	2.03	0.40
1:A:249:GLN:NE2	1:B:13:SER:CB	2.84	0.40
1:A:93:VAL:HG13	1:A:247:MET:HB3	2.02	0.40
1:A:249:GLN:HA	1:A:253:PHE:HA	2.02	0.40
1:B:193:VAL:HG23	1:B:194:TYR:CD2	2.56	0.40
1:A:89:GLU:HA	1:B:251:THR:O	2.22	0.40

Continued on next page...

Continued from previous page...

Atom-1	Atom-2	Interatomic distance (Å)	Clash overlap (Å)
1:B:40:PRO:HA	1:B:41:PRO:HD3	1.88	0.40

All (1) symmetry-related close contacts are listed below. The label for Atom-2 includes the symmetry operator and encoded unit-cell translations to be applied.

Atom-1	Atom-2	Interatomic distance (Å)	Clash overlap (Å)
4:B:1557:HOH:O	4:B:1557:HOH:O[4_555]	1.94	0.26

5.3 Torsion angles [i](#)

5.3.1 Protein backbone [i](#)

In the following table, the Percentiles column shows the percent Ramachandran outliers of the chain as a percentile score with respect to all X-ray entries followed by that with respect to entries of similar resolution.

The Analysed column shows the number of residues for which the backbone conformation was analysed, and the total number of residues.

Mol	Chain	Analysed	Favoured	Allowed	Outliers	Percentiles	
1	A	366/381 (96%)	329 (90%)	27 (7%)	10 (3%)	5	8
1	B	365/381 (96%)	308 (84%)	47 (13%)	10 (3%)	5	8
All	All	731/762 (96%)	637 (87%)	74 (10%)	20 (3%)	5	8

All (20) Ramachandran outliers are listed below:

Mol	Chain	Res	Type
1	A	113	ASP
1	B	349	ALA
1	A	57	TYR
1	A	124	ALA
1	A	366	ARG
1	B	129	VAL
1	A	253	PHE
1	A	342	PRO
1	B	7	THR
1	B	10	ALA
1	B	113	ASP
1	B	253	PHE

Continued on next page...

Continued from previous page...

Mol	Chain	Res	Type
1	A	115	TYR
1	A	153	THR
1	B	310	LEU
1	B	366	ARG
1	A	334	SER
1	B	285	ARG
1	B	342	PRO
1	A	135	PRO

5.3.2 Protein sidechains [i](#)

In the following table, the Percentiles column shows the percent sidechain outliers of the chain as a percentile score with respect to all X-ray entries followed by that with respect to entries of similar resolution.

The Analysed column shows the number of residues for which the sidechain conformation was analysed, and the total number of residues.

Mol	Chain	Analysed	Rotameric	Outliers	Percentiles	
1	A	294/302 (97%)	275 (94%)	19 (6%)	17	34
1	B	293/302 (97%)	274 (94%)	19 (6%)	17	34
All	All	587/604 (97%)	549 (94%)	38 (6%)	17	34

All (38) residues with a non-rotameric sidechain are listed below:

Mol	Chain	Res	Type
1	A	2	ARG
1	A	29	ASN
1	A	66	LEU
1	A	70	LEU
1	A	127	ARG
1	A	134	THR
1	A	145	LEU
1	A	164	PRO
1	A	201	GLU
1	A	248	ARG
1	A	249	GLN
1	A	269	LEU
1	A	290	LEU
1	A	295	ARG
1	A	310	LEU

Continued on next page...

Continued from previous page...

Mol	Chain	Res	Type
1	A	355	GLU
1	A	359	LEU
1	A	363	ARG
1	A	366	ARG
1	B	1	MET
1	B	2	ARG
1	B	18	MET
1	B	66	LEU
1	B	70	LEU
1	B	94	LEU
1	B	120	PHE
1	B	145	LEU
1	B	158	LEU
1	B	164	PRO
1	B	239	GLU
1	B	248	ARG
1	B	259	LEU
1	B	269	LEU
1	B	272	ARG
1	B	295	ARG
1	B	308	TYR
1	B	310	LEU
1	B	342	PRO

Sometimes sidechains can be flipped to improve hydrogen bonding and reduce clashes. All (3) such sidechains are listed below:

Mol	Chain	Res	Type
1	A	29	ASN
1	A	249	GLN
1	B	249	GLN

5.3.3 RNA [i](#)

There are no RNA molecules in this entry.

5.4 Non-standard residues in protein, DNA, RNA chains [i](#)

There are no non-standard protein/DNA/RNA residues in this entry.

5.5 Carbohydrates [i](#)

There are no monosaccharides in this entry.

5.6 Ligand geometry [i](#)

4 ligands are modelled in this entry.

In the following table, the Counts columns list the number of bonds (or angles) for which Mogul statistics could be retrieved, the number of bonds (or angles) that are observed in the model and the number of bonds (or angles) that are defined in the Chemical Component Dictionary. The Link column lists molecule types, if any, to which the group is linked. The Z score for a bond length (or angle) is the number of standard deviations the observed value is removed from the expected value. A bond length (or angle) with $|Z| > 2$ is considered an outlier worth inspection. RMSZ is the root-mean-square of all Z scores of the bond lengths (or angles).

Mol	Type	Chain	Res	Link	Bond lengths			Bond angles		
					Counts	RMSZ	# Z > 2	Counts	RMSZ	# Z > 2
3	KMT	A	520	-	8,8,8	2.77	4 (50%)	7,9,9	2.81	2 (28%)
2	PLP	B	1510	1	15,15,16	1.42	3 (20%)	20,22,23	1.34	2 (10%)
2	PLP	A	510	1	15,15,16	1.32	1 (6%)	20,22,23	1.44	2 (10%)
3	KMT	B	1520	-	8,8,8	2.75	4 (50%)	7,9,9	2.55	2 (28%)

In the following table, the Chirals column lists the number of chiral outliers, the number of chiral centers analysed, the number of these observed in the model and the number defined in the Chemical Component Dictionary. Similar counts are reported in the Torsion and Rings columns. '-' means no outliers of that kind were identified.

Mol	Type	Chain	Res	Link	Chirals	Torsions	Rings
3	KMT	A	520	-	-	5/8/8/8	-
2	PLP	B	1510	1	-	1/6/6/8	0/1/1/1
2	PLP	A	510	1	-	2/6/6/8	0/1/1/1
3	KMT	B	1520	-	-	4/8/8/8	-

All (12) bond length outliers are listed below:

Mol	Chain	Res	Type	Atoms	Z	Observed(Å)	Ideal(Å)
3	B	1520	KMT	O1-C1	-4.92	1.16	1.30
3	A	520	KMT	O1-C1	-4.82	1.16	1.30
3	A	520	KMT	C2-C1	-4.01	1.48	1.53
3	B	1520	KMT	C2-C1	-3.61	1.48	1.53
3	A	520	KMT	C3-C2	-3.48	1.47	1.51
3	B	1520	KMT	C3-C2	-3.24	1.47	1.51

Continued on next page...

Continued from previous page...

Mol	Chain	Res	Type	Atoms	Z	Observed(Å)	Ideal(Å)
2	A	510	PLP	C3-C2	-3.07	1.37	1.40
3	B	1520	KMT	O2-C1	3.00	1.30	1.22
2	B	1510	PLP	C2A-C2	2.73	1.55	1.50
2	B	1510	PLP	C3-C2	-2.62	1.38	1.40
3	A	520	KMT	O2-C1	2.53	1.29	1.22
2	B	1510	PLP	P-O2P	2.06	1.62	1.54

All (8) bond angle outliers are listed below:

Mol	Chain	Res	Type	Atoms	Z	Observed(°)	Ideal(°)
3	A	520	KMT	O2-C1-C2	-6.20	113.44	121.72
3	B	1520	KMT	O2-C1-C2	-5.67	114.15	121.72
2	A	510	PLP	O4P-C5A-C5	3.44	115.90	109.35
2	A	510	PLP	O3P-P-O4P	3.17	115.16	106.73
2	B	1510	PLP	C6-C5-C4	2.67	120.26	118.16
2	B	1510	PLP	O4P-C5A-C5	2.24	113.63	109.35
3	A	520	KMT	C3-C2-C1	2.19	120.04	115.97
3	B	1520	KMT	C3-C2-C1	2.05	119.78	115.97

There are no chirality outliers.

All (12) torsion outliers are listed below:

Mol	Chain	Res	Type	Atoms
2	A	510	PLP	C5A-O4P-P-O2P
2	A	510	PLP	C5A-O4P-P-O3P
3	A	520	KMT	O1-C1-C2-C3
3	B	1520	KMT	O1-C1-C2-C3
3	B	1520	KMT	O2-C1-C2-O5
3	B	1520	KMT	O2-C1-C2-C3
3	B	1520	KMT	O5-C2-C3-C4
3	A	520	KMT	O5-C2-C3-C4
2	B	1510	PLP	C5A-O4P-P-O3P
3	A	520	KMT	C1-C2-C3-C4
3	A	520	KMT	O2-C1-C2-O5
3	A	520	KMT	O2-C1-C2-C3

There are no ring outliers.

2 monomers are involved in 3 short contacts:

Mol	Chain	Res	Type	Clashes	Symm-Clashes
2	B	1510	PLP	2	0

Continued on next page...

Continued from previous page...

Mol	Chain	Res	Type	Clashes	Symm-Clashes
3	B	1520	KMT	1	0

5.7 Other polymers [i](#)

There are no such residues in this entry.

5.8 Polymer linkage issues [i](#)

There are no chain breaks in this entry.

6 Fit of model and data [i](#)

6.1 Protein, DNA and RNA chains [i](#)

In the following table, the column labelled ‘#RSRZ > 2’ contains the number (and percentage) of RSRZ outliers, followed by percent RSRZ outliers for the chain as percentile scores relative to all X-ray entries and entries of similar resolution. The OWAB column contains the minimum, median, 95th percentile and maximum values of the occupancy-weighted average B-factor per residue. The column labelled ‘Q < 0.9’ lists the number of (and percentage) of residues with an average occupancy less than 0.9.

Mol	Chain	Analysed	<RSRZ>	#RSRZ>2	OWAB(Å ²)	Q<0.9
1	A	368/381 (96%)	-0.29	3 (0%) 86 84	14, 36, 61, 71	0
1	B	367/381 (96%)	-0.09	9 (2%) 57 51	10, 47, 69, 78	0
All	All	735/762 (96%)	-0.19	12 (1%) 72 68	10, 40, 67, 78	0

All (12) RSRZ outliers are listed below:

Mol	Chain	Res	Type	RSRZ
1	A	183	ALA	3.2
1	A	172	ARG	3.0
1	A	343	LYS	2.9
1	B	318	ASP	2.8
1	B	172	ARG	2.7
1	B	366	ARG	2.6
1	B	2	ARG	2.5
1	B	298	GLY	2.4
1	B	360	ALA	2.3
1	B	340	ASP	2.3
1	B	323	VAL	2.2
1	B	152	ARG	2.1

6.2 Non-standard residues in protein, DNA, RNA chains [i](#)

There are no non-standard protein/DNA/RNA residues in this entry.

6.3 Carbohydrates [i](#)

There are no monosaccharides in this entry.

6.4 Ligands [i](#)

In the following table, the Atoms column lists the number of modelled atoms in the group and the number defined in the chemical component dictionary. The B-factors column lists the minimum, median, 95th percentile and maximum values of B factors of atoms in the group. The column labelled 'Q< 0.9' lists the number of atoms with occupancy less than 0.9.

Mol	Type	Chain	Res	Atoms	RSCC	RSR	B-factors(\AA^2)	Q<0.9
3	KMT	B	1520	9/9	0.92	0.21	39,43,45,45	0
3	KMT	A	520	9/9	0.95	0.27	34,35,36,36	0
2	PLP	A	510	15/16	0.98	0.17	17,19,20,20	0
2	PLP	B	1510	15/16	0.98	0.17	22,27,29,29	0

6.5 Other polymers [i](#)

There are no such residues in this entry.