



wwPDB X-ray Structure Validation Summary Report ⓘ

Jan 3, 2024 – 12:04 pm GMT

PDB ID : 4USI
Title : Nitrogen regulatory protein PII from *Chlamydomonas reinhardtii* in complex with MgATP and 2-oxoglutarate
Authors : Chellamuthu, V.R.; Forchhammer, K.; Hartmann, M.D.
Deposited on : 2014-07-08
Resolution : 1.45 Å (reported)

This is a wwPDB X-ray Structure Validation Summary Report for a publicly released PDB entry.

We welcome your comments at validation@mail.wwpdb.org

A user guide is available at

<https://www.wwpdb.org/validation/2017/XrayValidationReportHelp>

with specific help available everywhere you see the ⓘ symbol.

The types of validation reports are described at

<http://www.wwpdb.org/validation/2017/FAQs#types>.

The following versions of software and data (see [references ⓘ](#)) were used in the production of this report:

MolProbity : 4.02b-467
Mogul : 1.8.4, CSD as541be (2020)
Xtriage (Phenix) : 1.13
EDS : 2.36
buster-report : 1.1.7 (2018)
Percentile statistics : 20191225.v01 (using entries in the PDB archive December 25th 2019)
Refmac : 5.8.0158
CCP4 : 7.0.044 (Gargrove)
Ideal geometry (proteins) : Engh & Huber (2001)
Ideal geometry (DNA, RNA) : Parkinson et al. (1996)
Validation Pipeline (wwPDB-VP) : 2.36

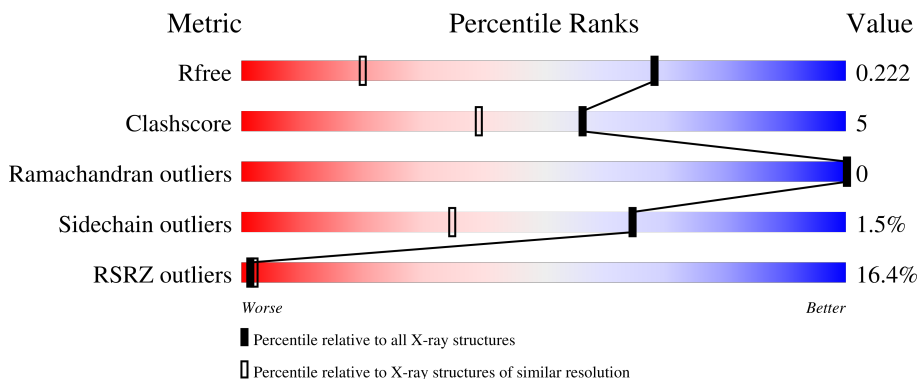
1 Overall quality at a glance

The following experimental techniques were used to determine the structure:

X-RAY DIFFRACTION

The reported resolution of this entry is 1.45 Å.

Percentile scores (ranging between 0-100) for global validation metrics of the entry are shown in the following graphic. The table shows the number of entries on which the scores are based.



Metric	Whole archive (#Entries)	Similar resolution (#Entries, resolution range(Å))
R_{free}	130704	1156 (1.46-1.46)
Clashscore	141614	1202 (1.46-1.46)
Ramachandran outliers	138981	1178 (1.46-1.46)
Sidechain outliers	138945	1178 (1.46-1.46)
RSRZ outliers	127900	1139 (1.46-1.46)

The table below summarises the geometric issues observed across the polymeric chains and their fit to the electron density. The red, orange, yellow and green segments of the lower bar indicate the fraction of residues that contain outliers for ≥ 3 , 2, 1 and 0 types of geometric quality criteria respectively. A grey segment represents the fraction of residues that are not modelled. The numeric value for each fraction is indicated below the corresponding segment, with a dot representing fractions $\leq 5\%$. The upper red bar (where present) indicates the fraction of residues that have poor fit to the electron density. The numeric value is given above the bar.

Mol	Chain	Length	Quality of chain
1	A	154	
1	B	154	
1	C	154	

2 Entry composition i

There are 6 unique types of molecules in this entry. The entry contains 2984 atoms, of which 0 are hydrogens and 0 are deuteriums.

In the tables below, the ZeroOcc column contains the number of atoms modelled with zero occupancy, the AltConf column contains the number of residues with at least one atom in alternate conformation and the Trace column contains the number of residues modelled with at most 2 atoms.

- Molecule 1 is a protein called NITROGEN REGULATORY PROTEIN PII.

Mol	Chain	Residues	Atoms					ZeroOcc	AltConf	Trace
			Total	C	N	O	S			
1	A	115	911	595	155	160	1	0	8	0
1	B	111	861	561	150	149	1	0	3	0
1	C	109	838	544	145	148	1	0	2	0

There are 33 discrepancies between the modelled and reference sequences:

Chain	Residue	Modelled	Actual	Comment	Reference
A	1	MET	-	expression tag	UNP A8JI83
A	145	SER	-	expression tag	UNP A8JI83
A	146	ALA	-	expression tag	UNP A8JI83
A	147	TRP	-	expression tag	UNP A8JI83
A	148	SER	-	expression tag	UNP A8JI83
A	149	HIS	-	expression tag	UNP A8JI83
A	150	PRO	-	expression tag	UNP A8JI83
A	151	GLN	-	expression tag	UNP A8JI83
A	152	PHE	-	expression tag	UNP A8JI83
A	153	GLU	-	expression tag	UNP A8JI83
A	154	LYS	-	expression tag	UNP A8JI83
B	1	MET	-	expression tag	UNP A8JI83
B	145	SER	-	expression tag	UNP A8JI83
B	146	ALA	-	expression tag	UNP A8JI83
B	147	TRP	-	expression tag	UNP A8JI83
B	148	SER	-	expression tag	UNP A8JI83
B	149	HIS	-	expression tag	UNP A8JI83
B	150	PRO	-	expression tag	UNP A8JI83
B	151	GLN	-	expression tag	UNP A8JI83
B	152	PHE	-	expression tag	UNP A8JI83
B	153	GLU	-	expression tag	UNP A8JI83
B	154	LYS	-	expression tag	UNP A8JI83
C	1	MET	-	expression tag	UNP A8JI83

Continued on next page...

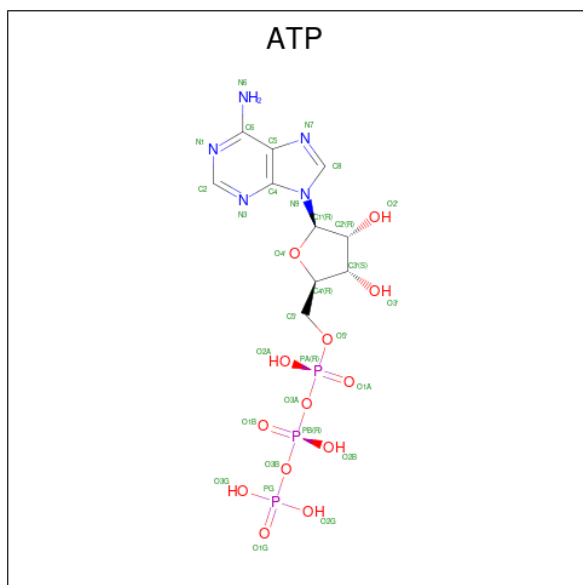
Continued from previous page...

Chain	Residue	Modelled	Actual	Comment	Reference
C	145	SER	-	expression tag	UNP A8JI83
C	146	ALA	-	expression tag	UNP A8JI83
C	147	TRP	-	expression tag	UNP A8JI83
C	148	SER	-	expression tag	UNP A8JI83
C	149	HIS	-	expression tag	UNP A8JI83
C	150	PRO	-	expression tag	UNP A8JI83
C	151	GLN	-	expression tag	UNP A8JI83
C	152	PHE	-	expression tag	UNP A8JI83
C	153	GLU	-	expression tag	UNP A8JI83
C	154	LYS	-	expression tag	UNP A8JI83

- Molecule 2 is MAGNESIUM ION (three-letter code: MG) (formula: Mg).

Mol	Chain	Residues	Atoms	ZeroOcc	AltConf
2	A	1	Total Mg 1 1	0	0
2	B	1	Total Mg 1 1	0	0

- Molecule 3 is ADENOSINE-5'-TRIPHOSPHATE (three-letter code: ATP) (formula: C₁₀H₁₆N₅O₁₃P₃).



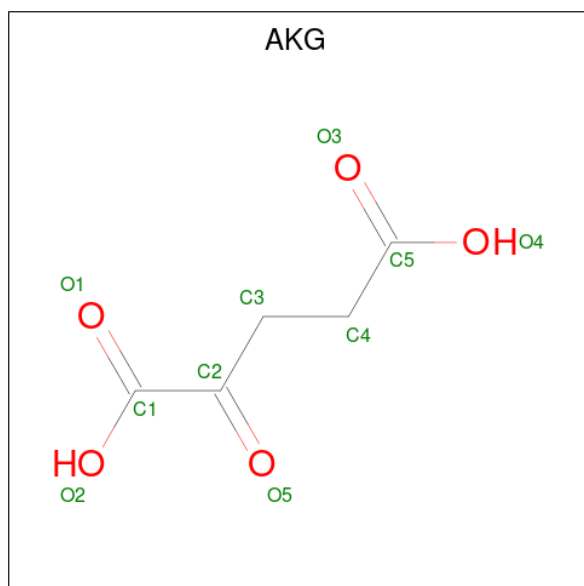
Mol	Chain	Residues	Atoms	ZeroOcc	AltConf
3	A	1	Total C N O P 31 10 5 13 3	0	0

Continued on next page...

Continued from previous page...

Mol	Chain	Residues	Atoms				ZeroOcc	AltConf	
			Total	C	N	O			P
3	B	1	31	10	5	13	3	0	0

- Molecule 4 is 2-OXOGLUTARIC ACID (three-letter code: AKG) (formula: C₅H₆O₅).



Mol	Chain	Residues	Atoms			ZeroOcc	AltConf
			Total	C	O		
4	A	1	10	5	5	0	0
4	B	1	10	5	5	0	0

- Molecule 5 is SULFATE ION (three-letter code: SO4) (formula: O₄S).



Mol	Chain	Residues	Atoms			ZeroOcc	AltConf
5	C	1	Total	O	S	0	0
			5	4	1		

- Molecule 6 is water.

Mol	Chain	Residues	Atoms		ZeroOcc	AltConf
6	A	120	Total	O	0	0
			120	120		
6	B	104	Total	O	0	0
			104	104		
6	C	61	Total	O	0	0
			61	61		

4 Data and refinement statistics

Property	Value	Source
Space group	P 1 21 1	Depositor
Cell constants a, b, c, α , β , γ	42.04Å 90.17Å 46.18Å 90.00° 96.47° 90.00°	Depositor
Resolution (Å)	37.90 – 1.45 32.78 – 1.45	Depositor EDS
% Data completeness (in resolution range)	97.8 (37.90-1.45) 97.8 (32.78-1.45)	Depositor EDS
R_{merge}	0.05	Depositor
R_{sym}	(Not available)	Depositor
$\langle I/\sigma(I) \rangle$ ¹	1.59 (at 1.45Å)	Xtrriage
Refinement program	REFMAC 5.7.0029	Depositor
R, R_{free}	0.185 , 0.216 0.193 , 0.222	Depositor DCC
R_{free} test set	2971 reflections (5.01%)	wwPDB-VP
Wilson B-factor (Å ²)	13.3	Xtrriage
Anisotropy	0.968	Xtrriage
Bulk solvent k_{sol} (e/Å ³), B_{sol} (Å ²)	0.38 , 43.8	EDS
L-test for twinning ²	$\langle L \rangle = 0.48$, $\langle L^2 \rangle = 0.31$	Xtrriage
Estimated twinning fraction	No twinning to report.	Xtrriage
F_o, F_c correlation	0.96	EDS
Total number of atoms	2984	wwPDB-VP
Average B, all atoms (Å ²)	21.0	wwPDB-VP

Xtrriage's analysis on translational NCS is as follows: *The largest off-origin peak in the Patterson function is 7.32% of the height of the origin peak. No significant pseudotranslation is detected.*

¹Intensities estimated from amplitudes.

²Theoretical values of $\langle |L| \rangle$, $\langle L^2 \rangle$ for acentric reflections are 0.5, 0.333 respectively for untwinned datasets, and 0.375, 0.2 for perfectly twinned datasets.

5 Model quality i

5.1 Standard geometry i

Bond lengths and bond angles in the following residue types are not validated in this section: AKG, ATP, SO4, MG

The Z score for a bond length (or angle) is the number of standard deviations the observed value is removed from the expected value. A bond length (or angle) with $|Z| > 5$ is considered an outlier worth inspection. RMSZ is the root-mean-square of all Z scores of the bond lengths (or angles).

Mol	Chain	Bond lengths		Bond angles	
		RMSZ	# Z >5	RMSZ	# Z >5
1	A	1.18	2/949 (0.2%)	1.30	8/1284 (0.6%)
1	B	1.19	1/887 (0.1%)	1.24	6/1201 (0.5%)
1	C	1.19	1/860 (0.1%)	1.31	9/1166 (0.8%)
All	All	1.18	4/2696 (0.1%)	1.28	23/3651 (0.6%)

All (4) bond length outliers are listed below:

Mol	Chain	Res	Type	Atoms	Z	Observed(Å)	Ideal(Å)
1	C	77	GLU	CD-OE1	-8.30	1.16	1.25
1	A	100	TYR	CE1-CZ	-5.44	1.31	1.38
1	B	20	ARG	CZ-NH1	-5.41	1.26	1.33
1	A	100	TYR	CG-CD2	-5.00	1.32	1.39

The worst 5 of 23 bond angle outliers are listed below:

Mol	Chain	Res	Type	Atoms	Z	Observed(°)	Ideal(°)
1	B	79	LEU	CB-CG-CD1	8.65	125.70	111.00
1	A	25	PHE	CB-CG-CD1	8.60	126.82	120.80
1	C	85	ARG	NE-CZ-NH2	-7.53	116.54	120.30
1	A	32[A]	PHE	CB-CG-CD2	-7.50	115.55	120.80
1	A	32[B]	PHE	CB-CG-CD2	-7.50	115.55	120.80

There are no chirality outliers.

There are no planarity outliers.

5.2 Too-close contacts i

In the following table, the Non-H and H(model) columns list the number of non-hydrogen atoms and hydrogen atoms in the chain respectively. The H(added) column lists the number of hydrogen

atoms added and optimized by MolProbity. The Clashes column lists the number of clashes within the asymmetric unit, whereas Symm-Clashes lists symmetry-related clashes.

Mol	Chain	Non-H	H(model)	H(added)	Clashes	Symm-Clashes
1	A	911	0	954	10	0
1	B	861	0	897	15	0
1	C	838	0	863	4	0
2	A	1	0	0	0	0
2	B	1	0	0	0	0
3	A	31	0	12	1	0
3	B	31	0	12	2	0
4	A	10	0	4	0	0
4	B	10	0	4	0	0
5	C	5	0	0	1	0
6	A	120	0	0	0	1
6	B	104	0	0	6	0
6	C	61	0	0	3	1
All	All	2984	0	2746	27	1

The all-atom clashscore is defined as the number of clashes found per 1000 atoms (including hydrogen atoms). The all-atom clashscore for this structure is 5.

The worst 5 of 27 close contacts within the same asymmetric unit are listed below, sorted by their clash magnitude.

Atom-1	Atom-2	Interatomic distance (Å)	Clash overlap (Å)
1:B:69:GLY:H	1:B:72:ASN:HD22	1.30	0.77
1:A:69:GLY:H	1:A:72:ASN:HD22	1.35	0.73
1:A:78[A]:LYS:HD3	1:A:80[A]:ASP:OD1	1.92	0.69
1:B:76:LYS:CE	6:B:2076:HOH:O	2.42	0.66
1:B:76:LYS:HD2	6:B:2076:HOH:O	1.96	0.64

All (1) symmetry-related close contacts are listed below. The label for Atom-2 includes the symmetry operator and encoded unit-cell translations to be applied.

Atom-1	Atom-2	Interatomic distance (Å)	Clash overlap (Å)
6:A:2012:HOH:O	6:C:2046:HOH:O[1_655]	2.17	0.03

5.3 Torsion angles [i](#)

5.3.1 Protein backbone [i](#)

In the following table, the Percentiles column shows the percent Ramachandran outliers of the chain as a percentile score with respect to all X-ray entries followed by that with respect to entries of similar resolution.

The Analysed column shows the number of residues for which the backbone conformation was analysed, and the total number of residues.

Mol	Chain	Analysed	Favoured	Allowed	Outliers	Percentiles	
1	A	119/154 (77%)	118 (99%)	1 (1%)	0	100	100
1	B	110/154 (71%)	110 (100%)	0	0	100	100
1	C	107/154 (70%)	106 (99%)	1 (1%)	0	100	100
All	All	336/462 (73%)	334 (99%)	2 (1%)	0	100	100

There are no Ramachandran outliers to report.

5.3.2 Protein sidechains [i](#)

In the following table, the Percentiles column shows the percent sidechain outliers of the chain as a percentile score with respect to all X-ray entries followed by that with respect to entries of similar resolution.

The Analysed column shows the number of residues for which the sidechain conformation was analysed, and the total number of residues.

Mol	Chain	Analysed	Rotameric	Outliers	Percentiles	
1	A	99/127 (78%)	95 (96%)	4 (4%)	31	4
1	B	92/127 (72%)	92 (100%)	0	100	100
1	C	89/127 (70%)	87 (98%)	2 (2%)	52	18
All	All	280/381 (74%)	274 (98%)	6 (2%)	65	19

5 of 6 residues with a non-rotameric sidechain are listed below:

Mol	Chain	Res	Type
1	A	32[B]	PHE
1	C	71	SER
1	C	72	ASN
1	A	6[B]	ILE
1	A	6[A]	ILE

Sometimes sidechains can be flipped to improve hydrogen bonding and reduce clashes. All (3) such sidechains are listed below:

Mol	Chain	Res	Type
1	A	72	ASN
1	B	72	ASN
1	C	72	ASN

5.3.3 RNA [i](#)

There are no RNA molecules in this entry.

5.4 Non-standard residues in protein, DNA, RNA chains [i](#)

There are no non-standard protein/DNA/RNA residues in this entry.

5.5 Carbohydrates [i](#)

There are no monosaccharides in this entry.

5.6 Ligand geometry [i](#)

Of 7 ligands modelled in this entry, 2 are monoatomic - leaving 5 for Mogul analysis.

In the following table, the Counts columns list the number of bonds (or angles) for which Mogul statistics could be retrieved, the number of bonds (or angles) that are observed in the model and the number of bonds (or angles) that are defined in the Chemical Component Dictionary. The Link column lists molecule types, if any, to which the group is linked. The Z score for a bond length (or angle) is the number of standard deviations the observed value is removed from the expected value. A bond length (or angle) with $|Z| > 2$ is considered an outlier worth inspection. RMSZ is the root-mean-square of all Z scores of the bond lengths (or angles).

Mol	Type	Chain	Res	Link	Bond lengths			Bond angles		
					Counts	RMSZ	# Z > 2	Counts	RMSZ	# Z > 2
4	AKG	A	1153	2	9,9,9	4.19	2 (22%)	11,11,11	2.17	4 (36%)
4	AKG	B	1153	2	9,9,9	4.97	1 (11%)	11,11,11	1.93	6 (54%)
5	SO4	C	1152	-	4,4,4	0.62	0	6,6,6	0.30	0
3	ATP	A	1152	2	26,33,33	1.25	2 (7%)	31,52,52	1.93	6 (19%)
3	ATP	B	1152	2	26,33,33	1.28	1 (3%)	31,52,52	1.47	6 (19%)

In the following table, the Chirals column lists the number of chiral outliers, the number of chiral centers analysed, the number of these observed in the model and the number defined in the

Chemical Component Dictionary. Similar counts are reported in the Torsion and Rings columns. '-' means no outliers of that kind were identified.

Mol	Type	Chain	Res	Link	Chirals	Torsions	Rings
4	AKG	A	1153	2	-	0/9/9/9	-
4	AKG	B	1153	2	-	1/9/9/9	-
3	ATP	A	1152	2	-	4/18/38/38	0/3/3/3
3	ATP	B	1152	2	-	4/18/38/38	0/3/3/3

The worst 5 of 6 bond length outliers are listed below:

Mol	Chain	Res	Type	Atoms	Z	Observed(Å)	Ideal(Å)
4	B	1153	AKG	C2-C1	-14.67	1.33	1.53
4	A	1153	AKG	C2-C1	-11.88	1.37	1.53
3	A	1152	ATP	C2-N3	4.47	1.39	1.32
3	B	1152	ATP	PG-O3G	-2.29	1.46	1.54
3	A	1152	ATP	C5-C4	2.13	1.46	1.40

The worst 5 of 22 bond angle outliers are listed below:

Mol	Chain	Res	Type	Atoms	Z	Observed(°)	Ideal(°)
3	A	1152	ATP	N3-C2-N1	-5.73	119.72	128.68
3	A	1152	ATP	C2-N1-C6	5.15	127.56	118.75
4	A	1153	AKG	O4-C5-O3	-4.37	112.41	123.30
3	A	1152	ATP	C5-C6-N6	3.63	125.87	120.35
3	B	1152	ATP	N3-C2-N1	-3.48	123.24	128.68

There are no chirality outliers.

5 of 9 torsion outliers are listed below:

Mol	Chain	Res	Type	Atoms
3	A	1152	ATP	C5'-O5'-PA-O3A
3	B	1152	ATP	C5'-O5'-PA-O3A
3	A	1152	ATP	PG-O3B-PB-O1B
3	B	1152	ATP	PG-O3B-PB-O2B
3	A	1152	ATP	C5'-O5'-PA-O1A

There are no ring outliers.

3 monomers are involved in 4 short contacts:

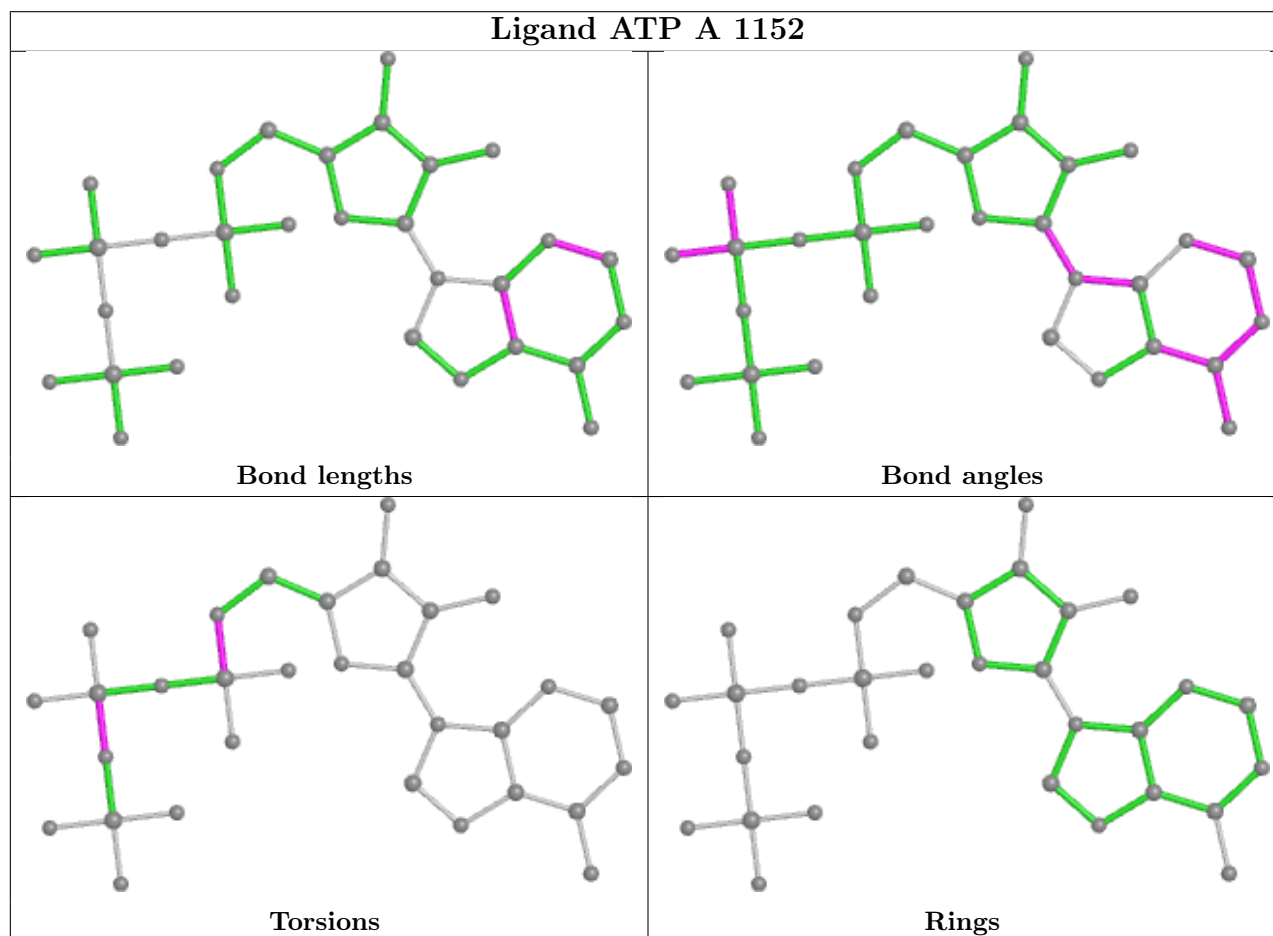
Mol	Chain	Res	Type	Clashes	Symm-Clashes
5	C	1152	SO4	1	0
3	A	1152	ATP	1	0

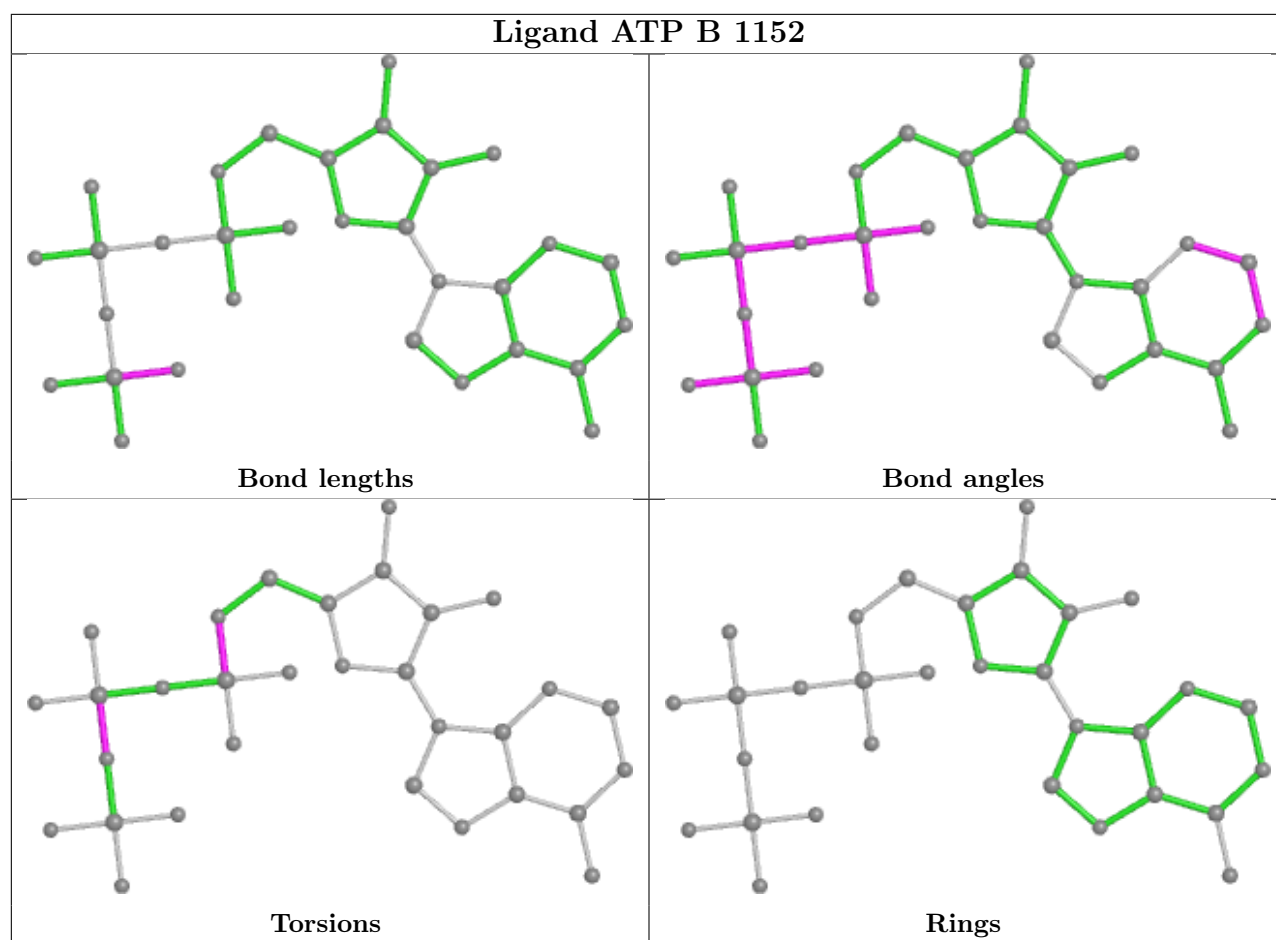
Continued on next page...

Continued from previous page...

Mol	Chain	Res	Type	Clashes	Symm-Clashes
3	B	1152	ATP	2	0

The following is a two-dimensional graphical depiction of Mogul quality analysis of bond lengths, bond angles, torsion angles, and ring geometry for all instances of the Ligand of Interest. In addition, ligands with molecular weight > 250 and outliers as shown on the validation Tables will also be included. For torsion angles, if less than 5% of the Mogul distribution of torsion angles is within 10 degrees of the torsion angle in question, then that torsion angle is considered an outlier. Any bond that is central to one or more torsion angles identified as an outlier by Mogul will be highlighted in the graph. For rings, the root-mean-square deviation (RMSD) between the ring in question and similar rings identified by Mogul is calculated over all ring torsion angles. If the average RMSD is greater than 60 degrees and the minimal RMSD between the ring in question and any Mogul-identified rings is also greater than 60 degrees, then that ring is considered an outlier. The outliers are highlighted in purple. The color gray indicates Mogul did not find sufficient equivalents in the CSD to analyse the geometry.





5.7 Other polymers [i](#)

There are no such residues in this entry.

5.8 Polymer linkage issues [i](#)

There are no chain breaks in this entry.

6 Fit of model and data [i](#)

6.1 Protein, DNA and RNA chains [i](#)

In the following table, the column labelled ‘#RSRZ > 2’ contains the number (and percentage) of RSRZ outliers, followed by percent RSRZ outliers for the chain as percentile scores relative to all X-ray entries and entries of similar resolution. The OWAB column contains the minimum, median, 95th percentile and maximum values of the occupancy-weighted average B-factor per residue. The column labelled ‘Q < 0.9’ lists the number of (and percentage) of residues with an average occupancy less than 0.9.

Mol	Chain	Analysed	<RSRZ>	#RSRZ>2	OWAB(Å ²)	Q<0.9
1	A	115/154 (74%)	0.65	13 (11%) 5 5	10, 17, 45, 51	0
1	B	111/154 (72%)	0.88	25 (22%) 0 1	11, 16, 42, 70	0
1	C	109/154 (70%)	1.01	17 (15%) 2 3	11, 18, 45, 68	0
All	All	335/462 (72%)	0.84	55 (16%) 1 2	10, 17, 45, 70	0

The worst 5 of 55 RSRZ outliers are listed below:

Mol	Chain	Res	Type	RSRZ
1	C	70	PRO	8.7
1	C	127	LEU	8.2
1	C	104	ILE	7.1
1	B	6	ILE	6.8
1	A	6[A]	ILE	6.3

6.2 Non-standard residues in protein, DNA, RNA chains [i](#)

There are no non-standard protein/DNA/RNA residues in this entry.

6.3 Carbohydrates [i](#)

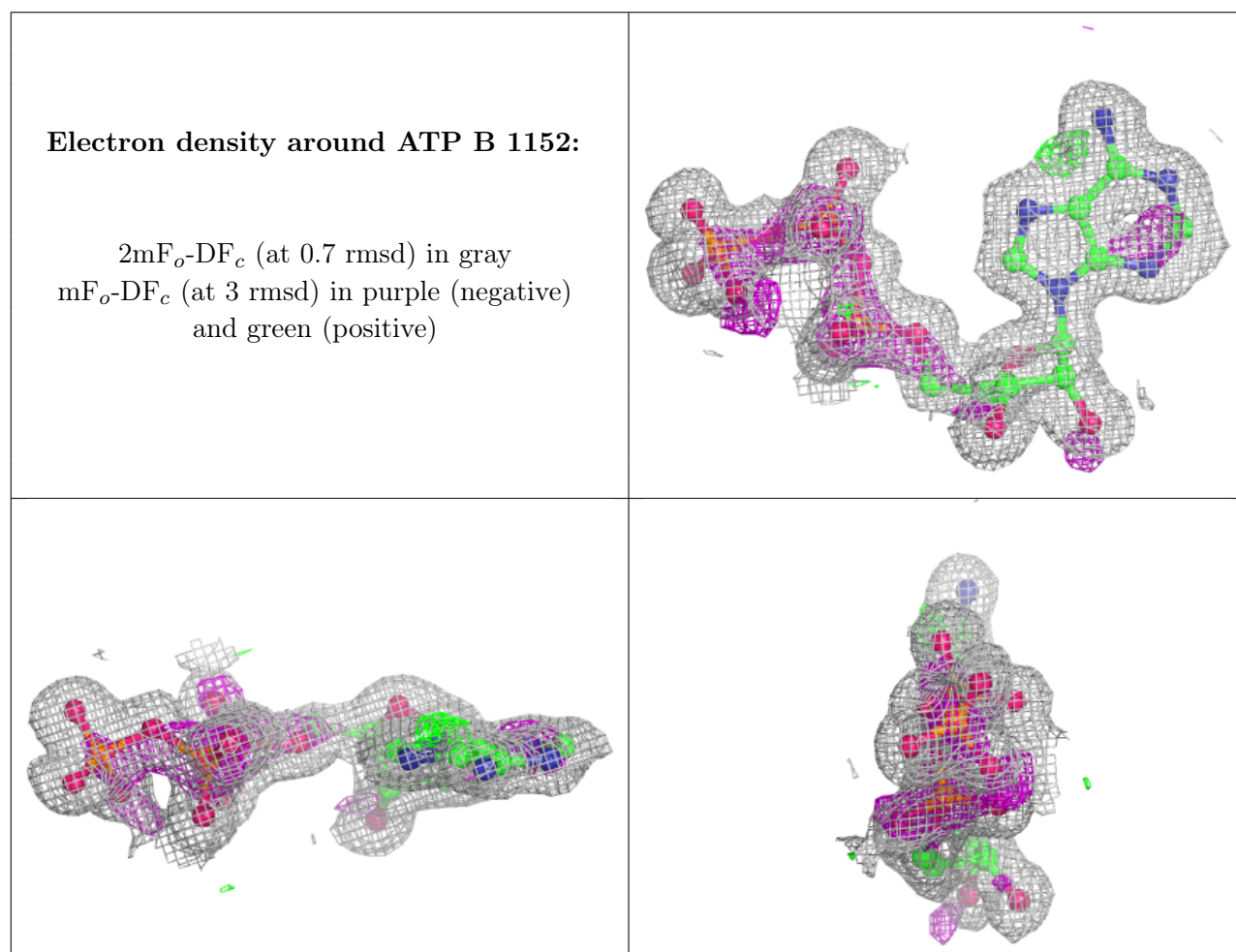
There are no monosaccharides in this entry.

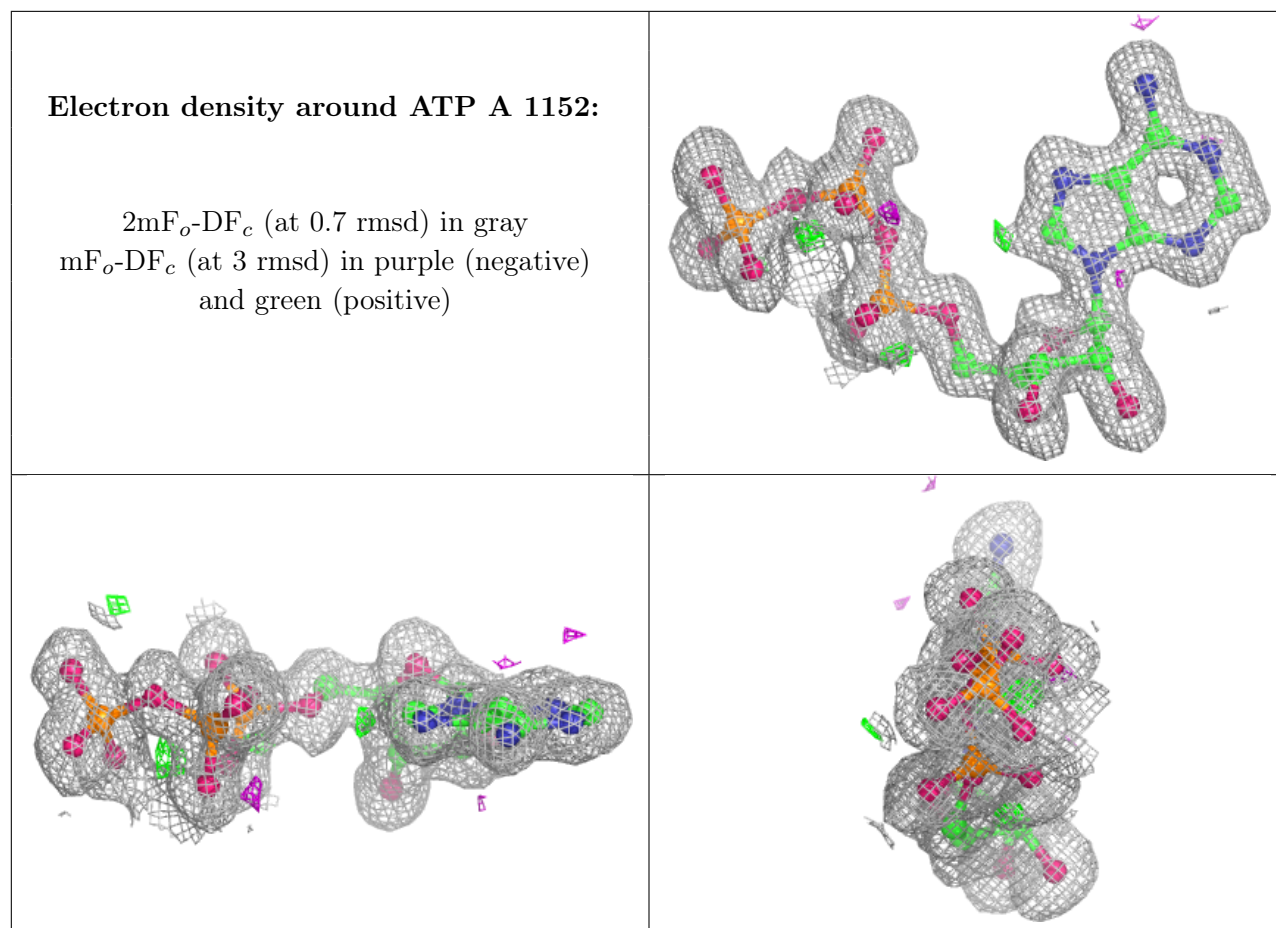
6.4 Ligands [i](#)

In the following table, the Atoms column lists the number of modelled atoms in the group and the number defined in the chemical component dictionary. The B-factors column lists the minimum, median, 95th percentile and maximum values of B factors of atoms in the group. The column labelled ‘Q < 0.9’ lists the number of atoms with occupancy less than 0.9.

Mol	Type	Chain	Res	Atoms	RSCC	RSR	B-factors(\AA^2)	Q<0.9
4	AKG	B	1153	10/10	0.86	0.15	18,20,21,21	10
2	MG	B	1151	1/1	0.91	0.10	24,24,24,24	0
3	ATP	B	1152	31/31	0.94	0.13	15,18,23,25	0
5	SO4	C	1152	5/5	0.95	0.26	38,41,62,65	0
4	AKG	A	1153	10/10	0.96	0.13	16,18,21,21	0
3	ATP	A	1152	31/31	0.98	0.06	11,13,15,18	0
2	MG	A	1151	1/1	0.99	0.05	16,16,16,16	0

The following is a graphical depiction of the model fit to experimental electron density of all instances of the Ligand of Interest. In addition, ligands with molecular weight > 250 and outliers as shown on the geometry validation Tables will also be included. Each fit is shown from different orientation to approximate a three-dimensional view.





6.5 Other polymers ⓘ

There are no such residues in this entry.