



wwPDB X-ray Structure Validation Summary Report ⓘ

Nov 5, 2023 – 03:02 AM EST

PDB ID : 1TZM
Title : Crystal structure of ACC deaminase complexed with substrate analog b-chloro-D-alanine
Authors : Karthikeyan, S.; Zhou, Q.; Zhao, Z.; Kao, C.L.; Tao, Z.; Robinson, H.; Liu, H.W.; Zhang, H.
Deposited on : 2004-07-10
Resolution : 2.08 Å(reported)

This is a wwPDB X-ray Structure Validation Summary Report for a publicly released PDB entry.

We welcome your comments at validation@mail.wwpdb.org

A user guide is available at

<https://www.wwpdb.org/validation/2017/XrayValidationReportHelp>

with specific help available everywhere you see the ⓘ symbol.

The types of validation reports are described at

<http://www.wwpdb.org/validation/2017/FAQs#types>.

The following versions of software and data (see [references ⓘ](#)) were used in the production of this report:

MolProbity : 4.02b-467
Mogul : 1.8.5 (274361), CSD as541be (2020)
Xtrriage (Phenix) : **NOT EXECUTED**
EDS : **NOT EXECUTED**
Percentile statistics : 20191225.v01 (using entries in the PDB archive December 25th 2019)
Ideal geometry (proteins) : Engh & Huber (2001)
Ideal geometry (DNA, RNA) : Parkinson et al. (1996)
Validation Pipeline (wwPDB-VP) : 2.36

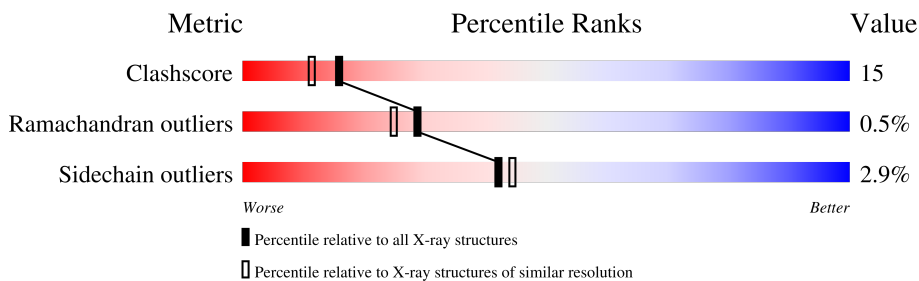
1 Overall quality at a glance

The following experimental techniques were used to determine the structure:

X-RAY DIFFRACTION

The reported resolution of this entry is 2.08 Å.

Percentile scores (ranging between 0-100) for global validation metrics of the entry are shown in the following graphic. The table shows the number of entries on which the scores are based.



Metric	Whole archive (#Entries)	Similar resolution (#Entries, resolution range(Å))
Clashscore	141614	6738 (2.10-2.06)
Ramachandran outliers	138981	6663 (2.10-2.06)
Sidechain outliers	138945	6664 (2.10-2.06)

The table below summarises the geometric issues observed across the polymeric chains and their fit to the electron density. The red, orange, yellow and green segments of the lower bar indicate the fraction of residues that contain outliers for ≥ 3 , 2, 1 and 0 types of geometric quality criteria respectively. A grey segment represents the fraction of residues that are not modelled. The numeric value for each fraction is indicated below the corresponding segment, with a dot representing fractions $\leq 5\%$

Note EDS was not executed.

Mol	Chain	Length	Quality of chain
1	A	338	
1	B	338	
1	C	338	
1	D	338	

The following table lists non-polymeric compounds, carbohydrate monomers and non-standard residues in protein, DNA, RNA chains that are outliers for geometric or electron-density-fit criteria:

Mol	Type	Chain	Res	Chirality	Geometry	Clashes	Electron density
3	C2N	A	501	-	-	X	-

2 Entry composition [i](#)

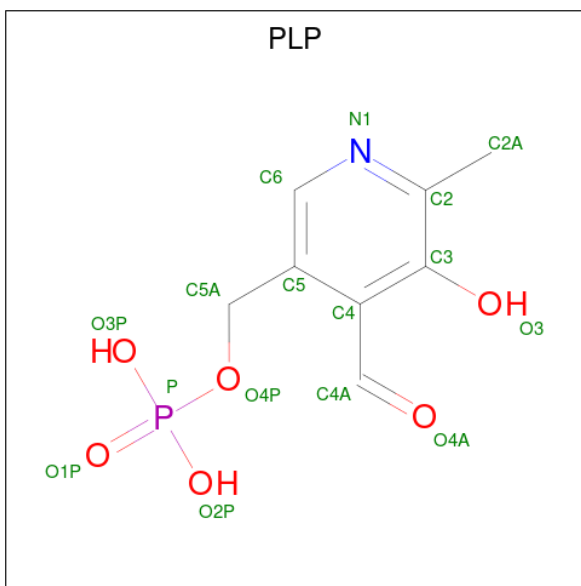
There are 6 unique types of molecules in this entry. The entry contains 10576 atoms, of which 0 are hydrogens and 0 are deuteriums.

In the tables below, the ZeroOcc column contains the number of atoms modelled with zero occupancy, the AltConf column contains the number of residues with at least one atom in alternate conformation and the Trace column contains the number of residues modelled with at most 2 atoms.

- Molecule 1 is a protein called 1-aminocyclopropane-1-carboxylate deaminase.

Mol	Chain	Residues	Atoms					ZeroOcc	AltConf	Trace
			Total	C	N	O	S			
1	A	331	Total 2514	C 1576	N 451	O 472	S 15	0	0	0
1	B	328	Total 2488	C 1561	N 445	O 467	S 15	0	0	0
1	C	338	Total 2571	C 1614	N 461	O 481	S 15	0	0	0
1	D	329	Total 2495	C 1565	N 449	O 466	S 15	0	0	0

- Molecule 2 is PYRIDOXAL-5'-PHOSPHATE (three-letter code: PLP) (formula: C₈H₁₀NO₆P).



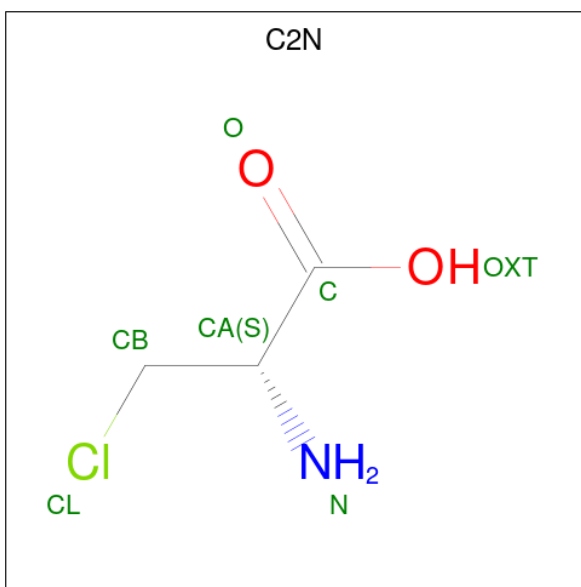
Mol	Chain	Residues	Atoms					ZeroOcc	AltConf
			Total	C	N	O	P		
2	A	1	Total 15	C 8	N 1	O 5	P 1	0	0
2	B	1	Total 15	C 8	N 1	O 5	P 1	0	0

Continued on next page...

Continued from previous page...

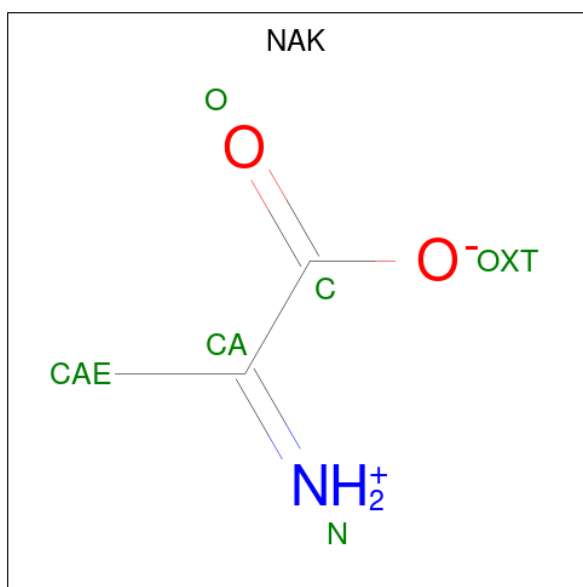
Mol	Chain	Residues	Atoms					ZeroOcc	AltConf
2	C	1	Total	C	N	O	P	0	0
			15	8	1	5	1		
2	D	1	Total	C	N	O	P	0	0
			15	8	1	5	1		

- Molecule 3 is 3-chloro-D-alanine (three-letter code: C2N) (formula: C₃H₆ClNO₂).



Mol	Chain	Residues	Atoms					ZeroOcc	AltConf
3	A	1	Total	C	Cl	N	O	0	0
			7	3	1	1	2		
3	C	1	Total	C	Cl	N	O	0	0
			7	3	1	1	2		

- Molecule 4 is AMINO-ACRYLATE (three-letter code: NAK) (formula: C₃H₅NO₂).



Mol	Chain	Residues	Atoms				ZeroOcc	AltConf
			Total	C	N	O		
4	A	1	6	3	1	2	0	0
4	C	1	6	3	1	2	0	0

- Molecule 5 is SULFATE ION (three-letter code: SO4) (formula: O₄S).



Mol	Chain	Residues	Atoms			ZeroOcc	AltConf
			Total	O	S		
5	B	1	5	4	1	0	0
5	D	1	5	4	1	0	0

- Molecule 6 is water.

Mol	Chain	Residues	Atoms	ZeroOcc	AltConf
6	A	99	Total O 99 99	0	0
6	B	90	Total O 90 90	0	0
6	C	126	Total O 126 126	0	0
6	D	97	Total O 97 97	0	0

3 Residue-property plots

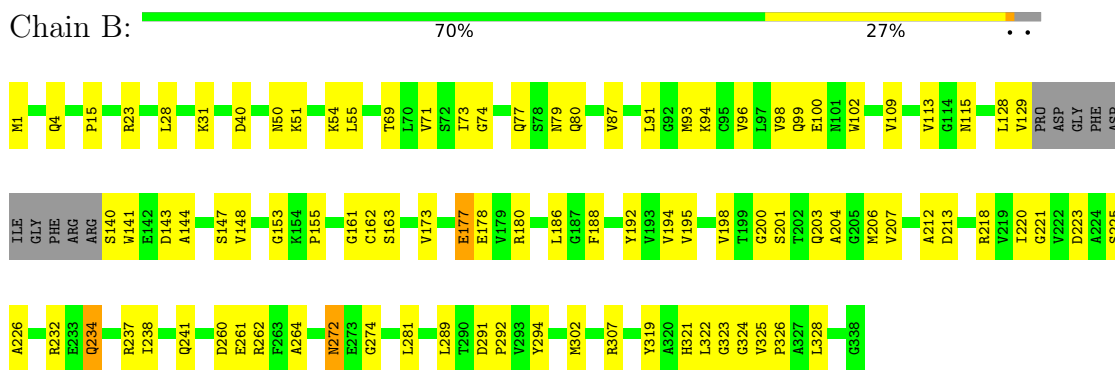
These plots are drawn for all protein, RNA, DNA and oligosaccharide chains in the entry. The first graphic for a chain summarises the proportions of the various outlier classes displayed in the second graphic. The second graphic shows the sequence view annotated by issues in geometry. Residues are color-coded according to the number of geometric quality criteria for which they contain at least one outlier: green = 0, yellow = 1, orange = 2 and red = 3 or more. Stretches of 2 or more consecutive residues without any outlier are shown as a green connector. Residues present in the sample, but not in the model, are shown in grey.

Note EDS was not executed.

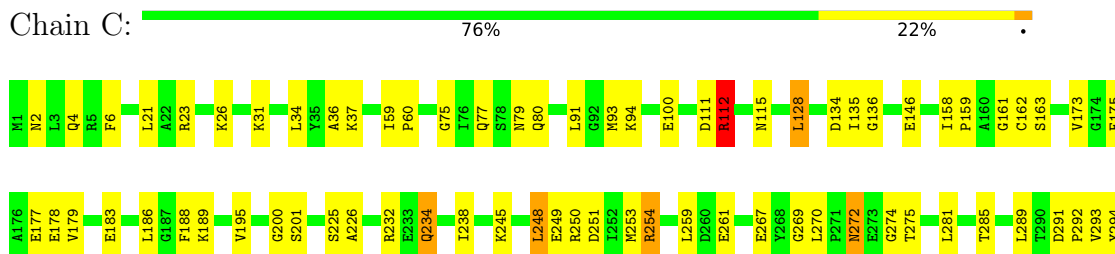
- Molecule 1: 1-aminocyclopropane-1-carboxylate deaminase



- Molecule 1: 1-aminocyclopropane-1-carboxylate deaminase



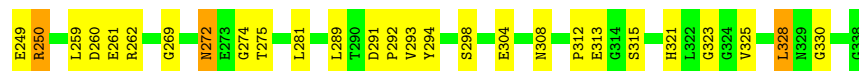
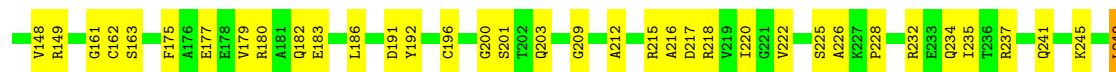
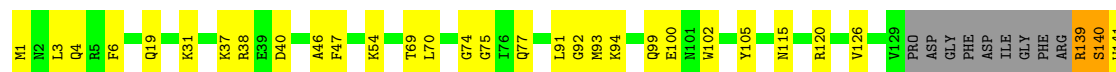
- Molecule 1: 1-aminocyclopropane-1-carboxylate deaminase





- Molecule 1: 1-aminocyclopropane-1-carboxylate deaminase

Chain D: 70% 26% ..



4 Data and refinement statistics

Xtrriage (Phenix) and EDS were not executed - this section is therefore incomplete.

Property	Value	Source
Space group	P 21 21 21	Depositor
Cell constants a, b, c, α , β , γ	67.64Å 68.26Å 349.75Å 90.00° 90.00° 90.00°	Depositor
Resolution (Å)	29.86 – 2.08	Depositor
% Data completeness (in resolution range)	98.2 (29.86-2.08)	Depositor
R_{merge}	(Not available)	Depositor
R_{sym}	0.12	Depositor
Refinement program	CNS 1.1	Depositor
R, R_{free}	0.226 , 0.268	Depositor
Estimated twinning fraction	No twinning to report.	Xtrriage
Total number of atoms	10576	wwPDB-VP
Average B, all atoms (Å ²)	42.0	wwPDB-VP

5 Model quality [i](#)

5.1 Standard geometry [i](#)

Bond lengths and bond angles in the following residue types are not validated in this section: SO4, C2N, NAK, PLP

The Z score for a bond length (or angle) is the number of standard deviations the observed value is removed from the expected value. A bond length (or angle) with $|Z| > 5$ is considered an outlier worth inspection. RMSZ is the root-mean-square of all Z scores of the bond lengths (or angles).

Mol	Chain	Bond lengths		Bond angles	
		RMSZ	# Z >5	RMSZ	# Z >5
1	A	0.52	0/2561	0.74	3/3461 (0.1%)
1	B	0.49	0/2534	0.71	2/3424 (0.1%)
1	C	0.55	0/2621	0.79	3/3542 (0.1%)
1	D	0.52	0/2541	0.74	1/3433 (0.0%)
All	All	0.52	0/10257	0.75	9/13860 (0.1%)

There are no bond length outliers.

The worst 5 of 9 bond angle outliers are listed below:

Mol	Chain	Res	Type	Atoms	Z	Observed(°)	Ideal(°)
1	C	200	GLY	N-CA-C	7.52	131.90	113.10
1	B	200	GLY	N-CA-C	7.03	130.68	113.10
1	A	112	ARG	NE-CZ-NH2	-6.58	117.01	120.30
1	A	112	ARG	NE-CZ-NH1	6.03	123.31	120.30
1	D	200	GLY	N-CA-C	6.01	128.14	113.10

There are no chirality outliers.

There are no planarity outliers.

5.2 Too-close contacts [i](#)

In the following table, the Non-H and H(model) columns list the number of non-hydrogen atoms and hydrogen atoms in the chain respectively. The H(added) column lists the number of hydrogen atoms added and optimized by MolProbity. The Clashes column lists the number of clashes within the asymmetric unit, whereas Symm-Clashes lists symmetry-related clashes.

Mol	Chain	Non-H	H(model)	H(added)	Clashes	Symm-Clashes
1	A	2514	0	2485	78	0
1	B	2488	0	2462	73	0

Continued on next page...

Continued from previous page...

Mol	Chain	Non-H	H(model)	H(added)	Clashes	Symm-Clashes
1	C	2571	0	2539	66	0
1	D	2495	0	2470	78	0
2	A	15	0	7	0	0
2	B	15	0	7	0	0
2	C	15	0	7	0	0
2	D	15	0	7	0	0
3	A	7	0	2	4	0
3	C	7	0	1	1	0
4	A	6	0	0	1	0
4	C	6	0	0	0	0
5	B	5	0	0	1	0
5	D	5	0	0	1	0
6	A	99	0	0	7	0
6	B	90	0	0	2	0
6	C	126	0	0	8	0
6	D	97	0	0	2	0
All	All	10576	0	9987	294	0

The all-atom clashscore is defined as the number of clashes found per 1000 atoms (including hydrogen atoms). The all-atom clashscore for this structure is 15.

The worst 5 of 294 close contacts within the same asymmetric unit are listed below, sorted by their clash magnitude.

Atom-1	Atom-2	Interatomic distance (Å)	Clash overlap (Å)
1:A:272:ASN:HD22	1:A:274:GLY:H	1.09	1.00
1:B:195:VAL:HG21	1:B:206:MET:HE3	1.45	0.98
1:B:272:ASN:HD22	1:B:274:GLY:H	1.15	0.92
1:D:1:MET:HE2	1:D:212:ALA:HB2	1.51	0.90
1:B:1:MET:HE3	1:B:212:ALA:HB2	1.58	0.85

There are no symmetry-related clashes.

5.3 Torsion angles [i](#)

5.3.1 Protein backbone [i](#)

In the following table, the Percentiles column shows the percent Ramachandran outliers of the chain as a percentile score with respect to all X-ray entries followed by that with respect to entries of similar resolution.

The Analysed column shows the number of residues for which the backbone conformation was analysed, and the total number of residues.

Mol	Chain	Analysed	Favoured	Allowed	Outliers	Percentiles	
1	A	327/338 (97%)	298 (91%)	26 (8%)	3 (1%)	17	12
1	B	324/338 (96%)	313 (97%)	11 (3%)	0	100	100
1	C	336/338 (99%)	322 (96%)	13 (4%)	1 (0%)	41	39
1	D	325/338 (96%)	306 (94%)	17 (5%)	2 (1%)	25	20
All	All	1312/1352 (97%)	1239 (94%)	67 (5%)	6 (0%)	29	25

5 of 6 Ramachandran outliers are listed below:

Mol	Chain	Res	Type
1	A	130	PRO
1	A	161	GLY
1	A	249	GLU
1	D	140	SER
1	D	217	ASP

5.3.2 Protein sidechains [i](#)

In the following table, the Percentiles column shows the percent sidechain outliers of the chain as a percentile score with respect to all X-ray entries followed by that with respect to entries of similar resolution.

The Analysed column shows the number of residues for which the sidechain conformation was analysed, and the total number of residues.

Mol	Chain	Analysed	Rotameric	Outliers	Percentiles	
1	A	258/264 (98%)	249 (96%)	9 (4%)	36	36
1	B	255/264 (97%)	250 (98%)	5 (2%)	55	59
1	C	263/264 (100%)	254 (97%)	9 (3%)	37	37
1	D	255/264 (97%)	248 (97%)	7 (3%)	44	47
All	All	1031/1056 (98%)	1001 (97%)	30 (3%)	42	44

5 of 30 residues with a non-rotameric sidechain are listed below:

Mol	Chain	Res	Type
1	C	112	ARG
1	D	272	ASN
1	C	234	GLN

Continued on next page...

Continued from previous page...

Mol	Chain	Res	Type
1	D	328	LEU
1	D	139	ARG

Sometimes sidechains can be flipped to improve hydrogen bonding and reduce clashes. 5 of 23 such sidechains are listed below:

Mol	Chain	Res	Type
1	C	27	HIS
1	C	272	ASN
1	C	230	GLN
1	C	321	HIS
1	A	308	ASN

5.3.3 RNA [i](#)

There are no RNA molecules in this entry.

5.4 Non-standard residues in protein, DNA, RNA chains [i](#)

There are no non-standard protein/DNA/RNA residues in this entry.

5.5 Carbohydrates [i](#)

There are no monosaccharides in this entry.

5.6 Ligand geometry [i](#)

10 ligands are modelled in this entry.

In the following table, the Counts columns list the number of bonds (or angles) for which Mogul statistics could be retrieved, the number of bonds (or angles) that are observed in the model and the number of bonds (or angles) that are defined in the Chemical Component Dictionary. The Link column lists molecule types, if any, to which the group is linked. The Z score for a bond length (or angle) is the number of standard deviations the observed value is removed from the expected value. A bond length (or angle) with $|Z| > 2$ is considered an outlier worth inspection. RMSZ is the root-mean-square of all Z scores of the bond lengths (or angles).

Mol	Type	Chain	Res	Link	Bond lengths			Bond angles		
					Counts	RMSZ	$\# Z > 2$	Counts	RMSZ	$\# Z > 2$
4	NAK	C	602	2,3	4,5,5	3.63	3 (75%)	4,6,6	1.74	2 (50%)

Mol	Type	Chain	Res	Link	Bond lengths			Bond angles		
					Counts	RMSZ	# Z > 2	Counts	RMSZ	# Z > 2
5	SO4	D	702	-	4,4,4	0.20	0	6,6,6	0.17	0
2	PLP	D	401	1	15,15,16	1.53	4 (26%)	20,22,23	1.04	0
4	NAK	A	601	2,3	4,5,5	3.63	3 (75%)	4,6,6	1.56	1 (25%)
3	C2N	C	502	4	4,6,6	0.95	0	4,7,7	1.02	0
3	C2N	A	501	4	4,6,6	0.95	0	4,7,7	1.05	0
2	PLP	C	401	1,4	15,15,16	1.77	4 (26%)	20,22,23	1.12	2 (10%)
2	PLP	B	401	1	15,15,16	1.83	4 (26%)	20,22,23	1.07	0
5	SO4	B	701	-	4,4,4	0.24	0	6,6,6	0.21	0
2	PLP	A	401	1,4	15,15,16	1.67	3 (20%)	20,22,23	1.05	0

In the following table, the Chirals column lists the number of chiral outliers, the number of chiral centers analysed, the number of these observed in the model and the number defined in the Chemical Component Dictionary. Similar counts are reported in the Torsion and Rings columns. '-' means no outliers of that kind were identified.

Mol	Type	Chain	Res	Link	Chirals	Torsions	Rings
4	NAK	C	602	2,3	-	0/2/4/4	-
2	PLP	D	401	1	-	0/6/6/8	0/1/1/1
4	NAK	A	601	2,3	-	0/2/4/4	-
3	C2N	C	502	4	-	1/5/6/6	-
3	C2N	A	501	4	-	0/5/6/6	-
2	PLP	C	401	1,4	-	0/6/6/8	0/1/1/1
2	PLP	B	401	1	-	0/6/6/8	0/1/1/1
2	PLP	A	401	1,4	-	0/6/6/8	0/1/1/1

The worst 5 of 21 bond length outliers are listed below:

Mol	Chain	Res	Type	Atoms	Z	Observed(Å)	Ideal(Å)
4	C	602	NAK	CAE-CA	-6.11	1.39	1.50
4	A	601	NAK	CAE-CA	-6.07	1.39	1.50
2	A	401	PLP	C5-C4	4.14	1.45	1.40
2	B	401	PLP	C3-C2	3.98	1.44	1.40
2	C	401	PLP	C3-C2	3.43	1.44	1.40

All (5) bond angle outliers are listed below:

Mol	Chain	Res	Type	Atoms	Z	Observed(°)	Ideal(°)
4	C	602	NAK	CAE-CA-C	2.22	120.32	118.17
4	C	602	NAK	OXT-C-O	-2.13	118.74	123.61
4	A	601	NAK	OXT-C-O	-2.11	118.77	123.61
2	C	401	PLP	C6-N1-C2	2.09	123.04	119.17

Continued on next page...

Continued from previous page...

Mol	Chain	Res	Type	Atoms	Z	Observed(°)	Ideal(°)
2	C	401	PLP	C4A-C4-C5	2.03	123.03	120.94

There are no chirality outliers.

All (1) torsion outliers are listed below:

Mol	Chain	Res	Type	Atoms
3	C	502	C2N	OXT-C-CA-N

There are no ring outliers.

5 monomers are involved in 7 short contacts:

Mol	Chain	Res	Type	Clashes	Symm-Clashes
5	D	702	SO4	1	0
4	A	601	NAK	1	0
3	C	502	C2N	1	0
3	A	501	C2N	4	0
5	B	701	SO4	1	0

5.7 Other polymers [i](#)

There are no such residues in this entry.

5.8 Polymer linkage issues [i](#)

There are no chain breaks in this entry.

6 Fit of model and data

6.1 Protein, DNA and RNA chains

EDS was not executed - this section is therefore empty.

6.2 Non-standard residues in protein, DNA, RNA chains

EDS was not executed - this section is therefore empty.

6.3 Carbohydrates

EDS was not executed - this section is therefore empty.

6.4 Ligands

EDS was not executed - this section is therefore empty.

6.5 Other polymers

EDS was not executed - this section is therefore empty.