



wwPDB X-ray Structure Validation Summary Report ⓘ

Sep 23, 2023 – 02:16 PM EDT

PDB ID : 5SYJ
Title : Crystal structure of the D141A variant of B. pseudomallei KatGin complex with isoniazid
Authors : Loewen, P.C.
Deposited on : 2016-08-11
Resolution : 1.88 Å(reported)

This is a wwPDB X-ray Structure Validation Summary Report for a publicly released PDB entry.

We welcome your comments at validation@mail.wwpdb.org

A user guide is available at

<https://www.wwpdb.org/validation/2017/XrayValidationReportHelp>

with specific help available everywhere you see the ⓘ symbol.

The types of validation reports are described at

<http://www.wwpdb.org/validation/2017/FAQs#types>.

The following versions of software and data (see [references ⓘ](#)) were used in the production of this report:

MolProbity : 4.02b-467
Mogul : 1.8.5 (274361), CSD as541be (2020)
Xtrriage (Phenix) : 1.13
EDS : 2.35.1
buster-report : 1.1.7 (2018)
Percentile statistics : 20191225.v01 (using entries in the PDB archive December 25th 2019)
Refmac : 5.8.0158
CCP4 : 7.0.044 (Gargrove)
Ideal geometry (proteins) : Engh & Huber (2001)
Ideal geometry (DNA, RNA) : Parkinson et al. (1996)
Validation Pipeline (wwPDB-VP) : 2.35.1

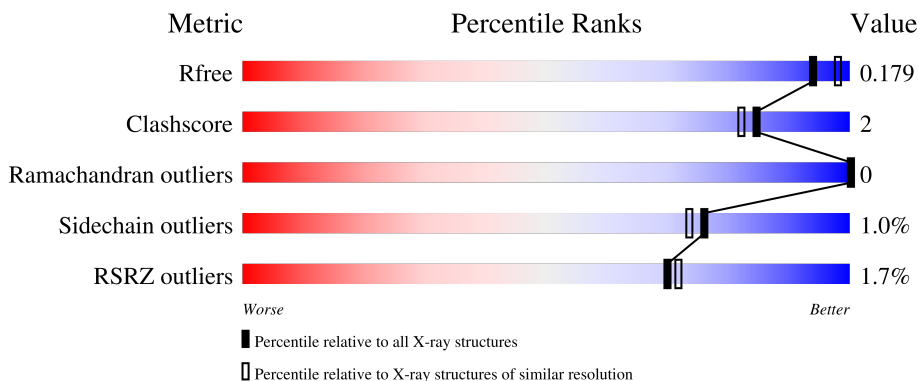
1 Overall quality at a glance

The following experimental techniques were used to determine the structure:

X-RAY DIFFRACTION

The reported resolution of this entry is 1.88 Å.

Percentile scores (ranging between 0-100) for global validation metrics of the entry are shown in the following graphic. The table shows the number of entries on which the scores are based.



Metric	Whole archive (#Entries)	Similar resolution (#Entries, resolution range(Å))
R_{free}	130704	9470 (1.90-1.86)
Clashscore	141614	10282 (1.90-1.86)
Ramachandran outliers	138981	10152 (1.90-1.86)
Sidechain outliers	138945	10152 (1.90-1.86)
RSRZ outliers	127900	9303 (1.90-1.86)

The table below summarises the geometric issues observed across the polymeric chains and their fit to the electron density. The red, orange, yellow and green segments of the lower bar indicate the fraction of residues that contain outliers for ≥ 3 , 2, 1 and 0 types of geometric quality criteria respectively. A grey segment represents the fraction of residues that are not modelled. The numeric value for each fraction is indicated below the corresponding segment, with a dot representing fractions $\leq 5\%$. The upper red bar (where present) indicates the fraction of residues that have poor fit to the electron density. The numeric value is given above the bar.

Mol	Chain	Length	Quality of chain
1	A	728	 2% 88% 10% ..
1	B	728	 % 87% 9% ..

The following table lists non-polymeric compounds, carbohydrate monomers and non-standard residues in protein, DNA, RNA chains that are outliers for geometric or electron-density-fit criteria:

Mol	Type	Chain	Res	Chirality	Geometry	Clashes	Electron density
5	MPD	B	804	-	X	-	-
7	NIZ	A	809	-	X	-	-
7	NIZ	A	810	-	X	-	-
7	NIZ	B	810	-	X	X	-

Continued from previous page...

Mol	Chain	Residues	Atoms				ZeroOcc	AltConf	
			Total	C	Fe	N			O
2	B	1	43	34	1	4	4	0	0

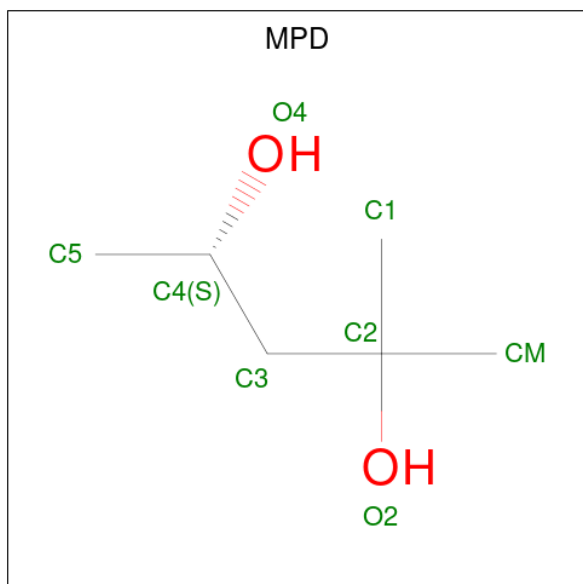
- Molecule 3 is SODIUM ION (three-letter code: NA) (formula: Na).

Mol	Chain	Residues	Atoms		ZeroOcc	AltConf
			Total	Na		
3	A	1	1	1	0	0
3	B	1	1	1	0	0

- Molecule 4 is CHLORIDE ION (three-letter code: CL) (formula: Cl).

Mol	Chain	Residues	Atoms		ZeroOcc	AltConf
			Total	Cl		
4	A	1	1	1	0	0
4	B	1	1	1	0	0

- Molecule 5 is (4S)-2-METHYL-2,4-PENTANEDIOL (three-letter code: MPD) (formula: C₆H₁₄O₂).



Mol	Chain	Residues	Atoms			ZeroOcc	AltConf
			Total	C	O		
5	A	1	8	6	2	0	0

Continued on next page...

Continued from previous page...

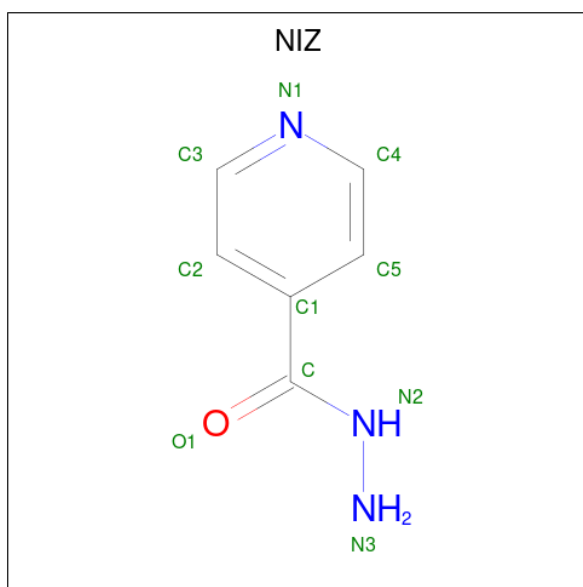
Mol	Chain	Residues	Atoms	ZeroOcc	AltConf
5	A	1	Total C O 8 6 2	0	0
5	A	1	Total C O 8 6 2	0	0
5	A	1	Total C O 8 6 2	0	0
5	B	1	Total C O 8 6 2	0	0
5	B	1	Total C O 8 6 2	0	0
5	B	1	Total C O 8 6 2	0	0
5	B	1	Total C O 8 6 2	0	0

- Molecule 6 is PHOSPHATE ION (three-letter code: PO4) (formula: O₄P).



Mol	Chain	Residues	Atoms	ZeroOcc	AltConf
6	A	1	Total O P 5 4 1	0	0
6	B	1	Total O P 5 4 1	0	0

- Molecule 7 is pyridine-4-carbohydrazide (three-letter code: NIZ) (formula: C₆H₇N₃O).



Mol	Chain	Residues	Atoms				ZeroOcc	AltConf
7	A	1	Total	C	N	O	0	0
			10	6	3	1		
7	A	1	Total	C	N	O	0	0
			10	6	3	1		
7	B	1	Total	C	N	O	0	0
			10	6	3	1		
7	B	1	Total	C	N	O	0	0
			10	6	3	1		

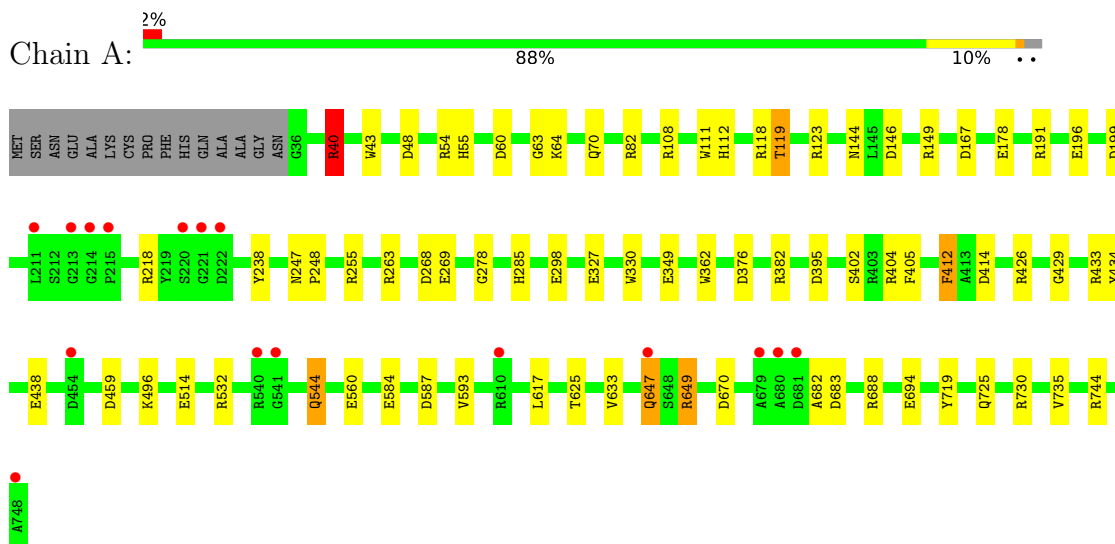
- Molecule 8 is water.

Mol	Chain	Residues	Atoms		ZeroOcc	AltConf
8	A	576	Total	O	0	0
			576	576		
8	B	583	Total	O	0	0
			583	583		

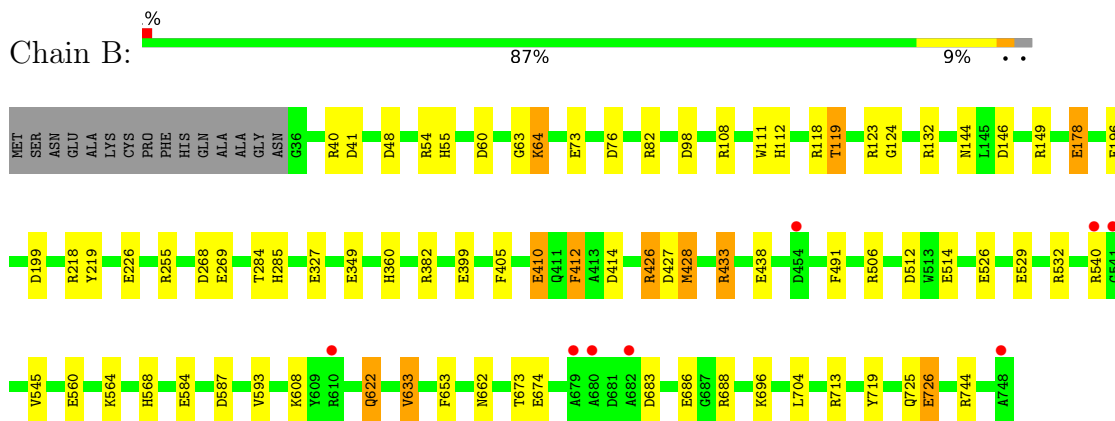
3 Residue-property plots [i](#)

These plots are drawn for all protein, RNA, DNA and oligosaccharide chains in the entry. The first graphic for a chain summarises the proportions of the various outlier classes displayed in the second graphic. The second graphic shows the sequence view annotated by issues in geometry and electron density. Residues are color-coded according to the number of geometric quality criteria for which they contain at least one outlier: green = 0, yellow = 1, orange = 2 and red = 3 or more. A red dot above a residue indicates a poor fit to the electron density ($RSRZ > 2$). Stretches of 2 or more consecutive residues without any outlier are shown as a green connector. Residues present in the sample, but not in the model, are shown in grey.

- Molecule 1: Catalase-peroxidase



- Molecule 1: Catalase-peroxidase



4 Data and refinement statistics

Property	Value	Source
Space group	P 21 21 21	Depositor
Cell constants a, b, c, α , β , γ	100.64Å 114.64Å 174.99Å 90.00° 90.00° 90.00°	Depositor
Resolution (Å)	20.00 – 1.88 47.95 – 1.88	Depositor EDS
% Data completeness (in resolution range)	98.4 (20.00-1.88) 98.4 (47.95-1.88)	Depositor EDS
R_{merge}	0.06	Depositor
R_{sym}	(Not available)	Depositor
$\langle I/\sigma(I) \rangle$ ¹	1.96 (at 1.88Å)	Xtrriage
Refinement program	REFMAC 5.8.0155	Depositor
R, R_{free}	0.140 , 0.170 0.153 , 0.179	Depositor DCC
R_{free} test set	8160 reflections (5.00%)	wwPDB-VP
Wilson B-factor (Å ²)	24.9	Xtrriage
Anisotropy	0.085	Xtrriage
Bulk solvent k_{sol} (e/Å ³), B_{sol} (Å ²)	0.37 , 50.0	EDS
L-test for twinning ²	$\langle L \rangle = 0.48$, $\langle L^2 \rangle = 0.31$	Xtrriage
Estimated twinning fraction	No twinning to report.	Xtrriage
F_o, F_c correlation	0.97	EDS
Total number of atoms	12427	wwPDB-VP
Average B, all atoms (Å ²)	29.0	wwPDB-VP

Xtrriage's analysis on translational NCS is as follows: *The largest off-origin peak in the Patterson function is 3.04% of the height of the origin peak. No significant pseudotranslation is detected.*

¹Intensities estimated from amplitudes.

²Theoretical values of $\langle |L| \rangle$, $\langle L^2 \rangle$ for acentric reflections are 0.5, 0.333 respectively for untwinned datasets, and 0.375, 0.2 for perfectly twinned datasets.

5 Model quality [i](#)

5.1 Standard geometry [i](#)

Bond lengths and bond angles in the following residue types are not validated in this section: HEM, PO4, NA, CL, NIZ, MPD

The Z score for a bond length (or angle) is the number of standard deviations the observed value is removed from the expected value. A bond length (or angle) with $|Z| > 5$ is considered an outlier worth inspection. RMSZ is the root-mean-square of all Z scores of the bond lengths (or angles).

Mol	Chain	Bond lengths		Bond angles	
		RMSZ	# Z >5	RMSZ	# Z >5
1	A	1.43	39/5706 (0.7%)	1.25	48/7756 (0.6%)
1	B	1.41	37/5684 (0.7%)	1.28	56/7728 (0.7%)
All	All	1.42	76/11390 (0.7%)	1.27	104/15484 (0.7%)

Chiral center outliers are detected by calculating the chiral volume of a chiral center and verifying if the center is modelled as a planar moiety or with the opposite hand. A planarity outlier is detected by checking planarity of atoms in a peptide group, atoms in a mainchain group or atoms of a sidechain that are expected to be planar.

Mol	Chain	#Chirality outliers	#Planarity outliers
1	B	0	1

The worst 5 of 76 bond length outliers are listed below:

Mol	Chain	Res	Type	Atoms	Z	Observed(Å)	Ideal(Å)
1	B	529	GLU	CG-CD	10.33	1.67	1.51
1	B	63	GLY	N-CA	10.17	1.61	1.46
1	A	63	GLY	N-CA	9.08	1.59	1.46
1	B	269	GLU	CD-OE1	-8.87	1.15	1.25
1	B	327	GLU	CD-OE1	8.58	1.35	1.25

The worst 5 of 104 bond angle outliers are listed below:

Mol	Chain	Res	Type	Atoms	Z	Observed(°)	Ideal(°)
1	A	532	ARG	NE-CZ-NH2	-17.51	111.55	120.30
1	A	426[A]	ARG	NE-CZ-NH1	-16.04	112.28	120.30
1	A	426[B]	ARG	NE-CZ-NH1	-16.04	112.28	120.30
1	B	532	ARG	NE-CZ-NH2	-15.72	112.44	120.30
1	B	255	ARG	NE-CZ-NH1	14.97	127.79	120.30

There are no chirality outliers.

All (1) planarity outliers are listed below:

Mol	Chain	Res	Type	Group
1	B	622	GLN	Sidechain

5.2 Too-close contacts [i](#)

In the following table, the Non-H and H(model) columns list the number of non-hydrogen atoms and hydrogen atoms in the chain respectively. The H(added) column lists the number of hydrogen atoms added and optimized by MolProbity. The Clashes column lists the number of clashes within the asymmetric unit, whereas Symm-Clashes lists symmetry-related clashes.

Mol	Chain	Non-H	H(model)	H(added)	Clashes	Symm-Clashes
1	A	5539	0	5374	18	0
1	B	5525	0	5356	26	0
2	A	43	0	30	0	0
2	B	43	0	30	1	0
3	A	1	0	0	0	0
3	B	1	0	0	0	0
4	A	1	0	0	0	0
4	B	1	0	0	0	0
5	A	32	0	56	3	0
5	B	32	0	56	4	0
6	A	5	0	0	0	0
6	B	5	0	0	0	0
7	A	20	0	14	4	0
7	B	20	0	14	6	0
8	A	576	0	0	6	0
8	B	583	0	0	6	0
All	All	12427	0	10930	50	0

The all-atom clashscore is defined as the number of clashes found per 1000 atoms (including hydrogen atoms). The all-atom clashscore for this structure is 2.

The worst 5 of 50 close contacts within the same asymmetric unit are listed below, sorted by their clash magnitude.

Atom-1	Atom-2	Interatomic distance (Å)	Clash overlap (Å)
1:B:622:GLN:NE2	7:B:809:NIZ:O1	2.07	0.88
5:A:805:MPD:O2	5:A:805:MPD:H53	1.80	0.80
1:B:119[B]:THR:HG23	8:B:1093:HOH:O	1.80	0.79
1:B:119[B]:THR:HG22	1:B:593:VAL:HG21	1.69	0.75

Continued on next page...

Continued from previous page...

Atom-1	Atom-2	Interatomic distance (Å)	Clash overlap (Å)
1:B:178:GLU:OE1	8:B:903:HOH:O	2.07	0.71

There are no symmetry-related clashes.

5.3 Torsion angles [i](#)

5.3.1 Protein backbone [i](#)

In the following table, the Percentiles column shows the percent Ramachandran outliers of the chain as a percentile score with respect to all X-ray entries followed by that with respect to entries of similar resolution.

The Analysed column shows the number of residues for which the backbone conformation was analysed, and the total number of residues.

Mol	Chain	Analysed	Favoured	Allowed	Outliers	Percentiles	
1	A	718/728 (99%)	706 (98%)	12 (2%)	0	100	100
1	B	716/728 (98%)	706 (99%)	10 (1%)	0	100	100
All	All	1434/1456 (98%)	1412 (98%)	22 (2%)	0	100	100

There are no Ramachandran outliers to report.

5.3.2 Protein sidechains [i](#)

In the following table, the Percentiles column shows the percent sidechain outliers of the chain as a percentile score with respect to all X-ray entries followed by that with respect to entries of similar resolution.

The Analysed column shows the number of residues for which the sidechain conformation was analysed, and the total number of residues.

Mol	Chain	Analysed	Rotameric	Outliers	Percentiles	
1	A	556/560 (99%)	550 (99%)	6 (1%)	73	70
1	B	554/560 (99%)	549 (99%)	5 (1%)	78	76
All	All	1110/1120 (99%)	1099 (99%)	11 (1%)	76	73

5 of 11 residues with a non-rotameric sidechain are listed below:

Mol	Chain	Res	Type
1	B	118	ARG
1	B	410	GLU
1	B	608	LYS
1	B	540	ARG
1	A	647	GLN

Sometimes sidechains can be flipped to improve hydrogen bonding and reduce clashes. 5 of 6 such sidechains are listed below:

Mol	Chain	Res	Type
1	B	406	HIS
1	B	650	HIS
1	B	725	GLN
1	B	46	GLN
1	A	247	ASN

5.3.3 RNA [i](#)

There are no RNA molecules in this entry.

5.4 Non-standard residues in protein, DNA, RNA chains [i](#)

There are no non-standard protein/DNA/RNA residues in this entry.

5.5 Carbohydrates [i](#)

There are no monosaccharides in this entry.

5.6 Ligand geometry [i](#)

Of 20 ligands modelled in this entry, 4 are monoatomic - leaving 16 for Mogul analysis.

In the following table, the Counts columns list the number of bonds (or angles) for which Mogul statistics could be retrieved, the number of bonds (or angles) that are observed in the model and the number of bonds (or angles) that are defined in the Chemical Component Dictionary. The Link column lists molecule types, if any, to which the group is linked. The Z score for a bond length (or angle) is the number of standard deviations the observed value is removed from the expected value. A bond length (or angle) with $|Z| > 2$ is considered an outlier worth inspection. RMSZ is the root-mean-square of all Z scores of the bond lengths (or angles).

Mol	Type	Chain	Res	Link	Bond lengths			Bond angles		
					Counts	RMSZ	# Z > 2	Counts	RMSZ	# Z > 2
5	MPD	B	807	-	7,7,7	1.15	0	9,10,10	1.21	1 (11%)
6	PO4	A	807	-	4,4,4	0.58	0	6,6,6	1.57	1 (16%)
5	MPD	A	805	-	7,7,7	0.74	0	9,10,10	1.79	3 (33%)
5	MPD	B	806	-	7,7,7	0.72	0	9,10,10	1.38	2 (22%)
7	NIZ	A	810	2	10,10,10	4.33	6 (60%)	12,12,12	3.77	9 (75%)
5	MPD	A	808	-	7,7,7	0.71	0	9,10,10	2.14	3 (33%)
5	MPD	A	806	-	7,7,7	1.56	1 (14%)	9,10,10	1.40	2 (22%)
7	NIZ	B	809	-	10,10,10	2.02	3 (30%)	12,12,12	3.62	6 (50%)
7	NIZ	B	810	-	10,10,10	4.92	8 (80%)	12,12,12	4.52	10 (83%)
7	NIZ	A	809	-	10,10,10	3.45	6 (60%)	12,12,12	2.27	6 (50%)
5	MPD	A	804	-	7,7,7	1.18	1 (14%)	9,10,10	2.10	3 (33%)
2	HEM	B	801	1	41,50,50	1.71	11 (26%)	45,82,82	1.70	12 (26%)
5	MPD	B	805	-	7,7,7	0.84	0	9,10,10	1.80	3 (33%)
6	PO4	B	808	-	4,4,4	1.11	0	6,6,6	1.09	1 (16%)
2	HEM	A	801	1,7	41,50,50	1.46	6 (14%)	45,82,82	1.75	13 (28%)
5	MPD	B	804	-	7,7,7	1.33	1 (14%)	9,10,10	4.11	6 (66%)

In the following table, the Chirals column lists the number of chiral outliers, the number of chiral centers analysed, the number of these observed in the model and the number defined in the Chemical Component Dictionary. Similar counts are reported in the Torsion and Rings columns. ^{1,2} means no outliers of that kind were identified.

Mol	Type	Chain	Res	Link	Chirals	Torsions	Rings
5	MPD	B	807	-	-	5/5/5/5	-
5	MPD	A	805	-	-	4/5/5/5	-
5	MPD	B	806	-	-	3/5/5/5	-
7	NIZ	A	810	2	-	0/6/6/6	0/1/1/1
5	MPD	A	808	-	-	3/5/5/5	-
5	MPD	A	806	-	-	3/5/5/5	-
7	NIZ	B	809	-	-	0/6/6/6	0/1/1/1
7	NIZ	B	810	-	-	0/6/6/6	0/1/1/1
7	NIZ	A	809	-	-	0/6/6/6	0/1/1/1
5	MPD	A	804	-	-	3/5/5/5	-
2	HEM	B	801	1	-	3/12/54/54	-
5	MPD	B	805	-	-	5/5/5/5	-
2	HEM	A	801	1,7	-	3/12/54/54	-
5	MPD	B	804	-	-	2/5/5/5	-

The worst 5 of 43 bond length outliers are listed below:

Mol	Chain	Res	Type	Atoms	Z	Observed(Å)	Ideal(Å)
7	B	810	NIZ	C-N2	9.02	1.43	1.33
7	A	810	NIZ	C-N2	8.69	1.42	1.33
7	B	810	NIZ	C2-C1	6.45	1.50	1.39
7	B	810	NIZ	C5-C1	6.43	1.50	1.39
7	A	809	NIZ	C-N2	6.41	1.40	1.33

The worst 5 of 81 bond angle outliers are listed below:

Mol	Chain	Res	Type	Atoms	Z	Observed(°)	Ideal(°)
7	B	809	NIZ	C1-C-N2	9.22	126.80	116.27
7	B	810	NIZ	C3-C2-C1	-7.52	110.83	119.05
7	A	810	NIZ	O1-C-C1	-7.28	107.95	120.94
7	B	810	NIZ	O1-C-C1	-7.17	108.16	120.94
5	B	804	MPD	O2-C2-C3	-7.08	83.21	109.80

There are no chirality outliers.

5 of 34 torsion outliers are listed below:

Mol	Chain	Res	Type	Atoms
5	A	808	MPD	O2-C2-C3-C4
5	A	808	MPD	CM-C2-C3-C4
5	B	806	MPD	C1-C2-C3-C4
5	B	806	MPD	O2-C2-C3-C4
5	A	805	MPD	O2-C2-C3-C4

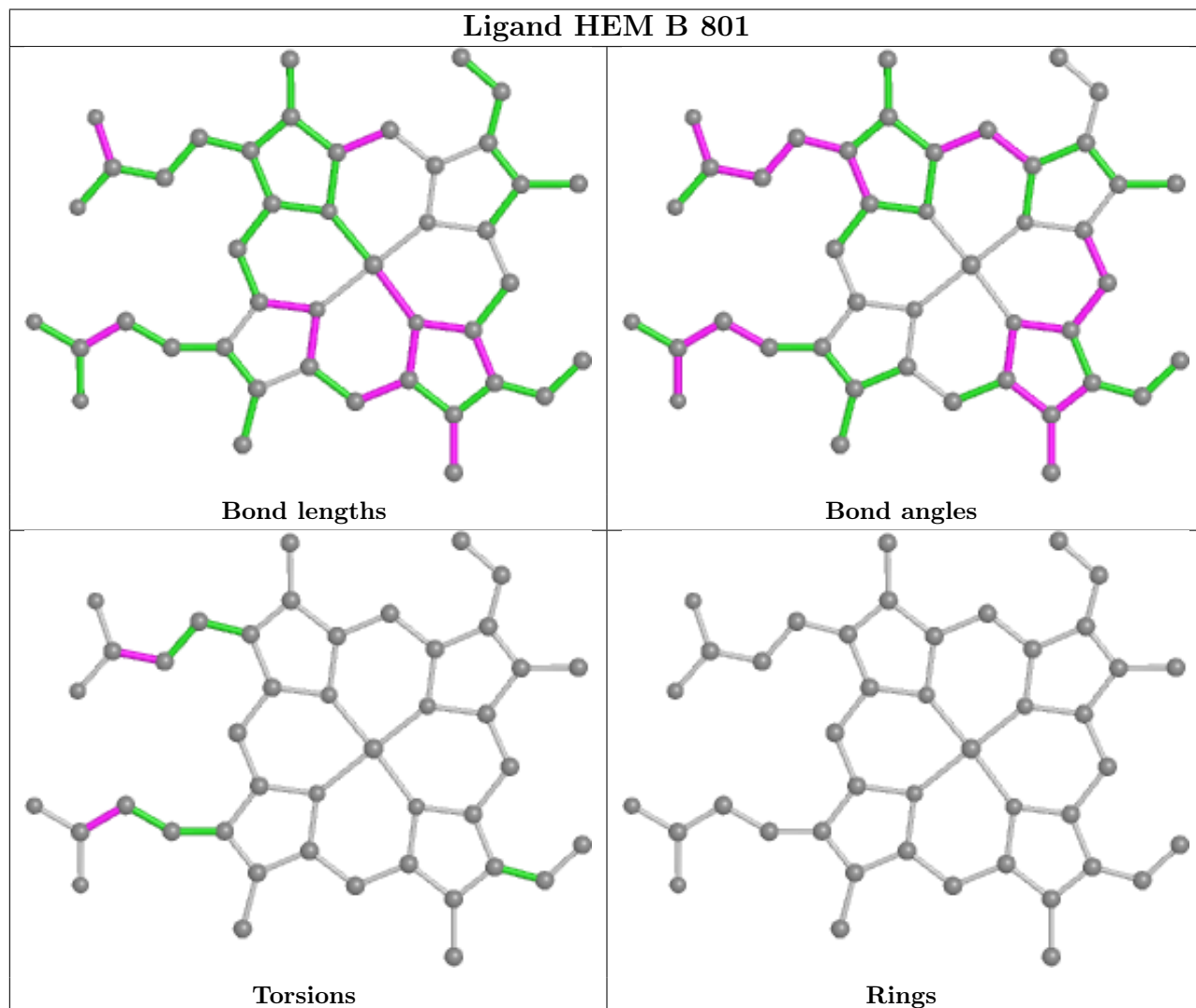
There are no ring outliers.

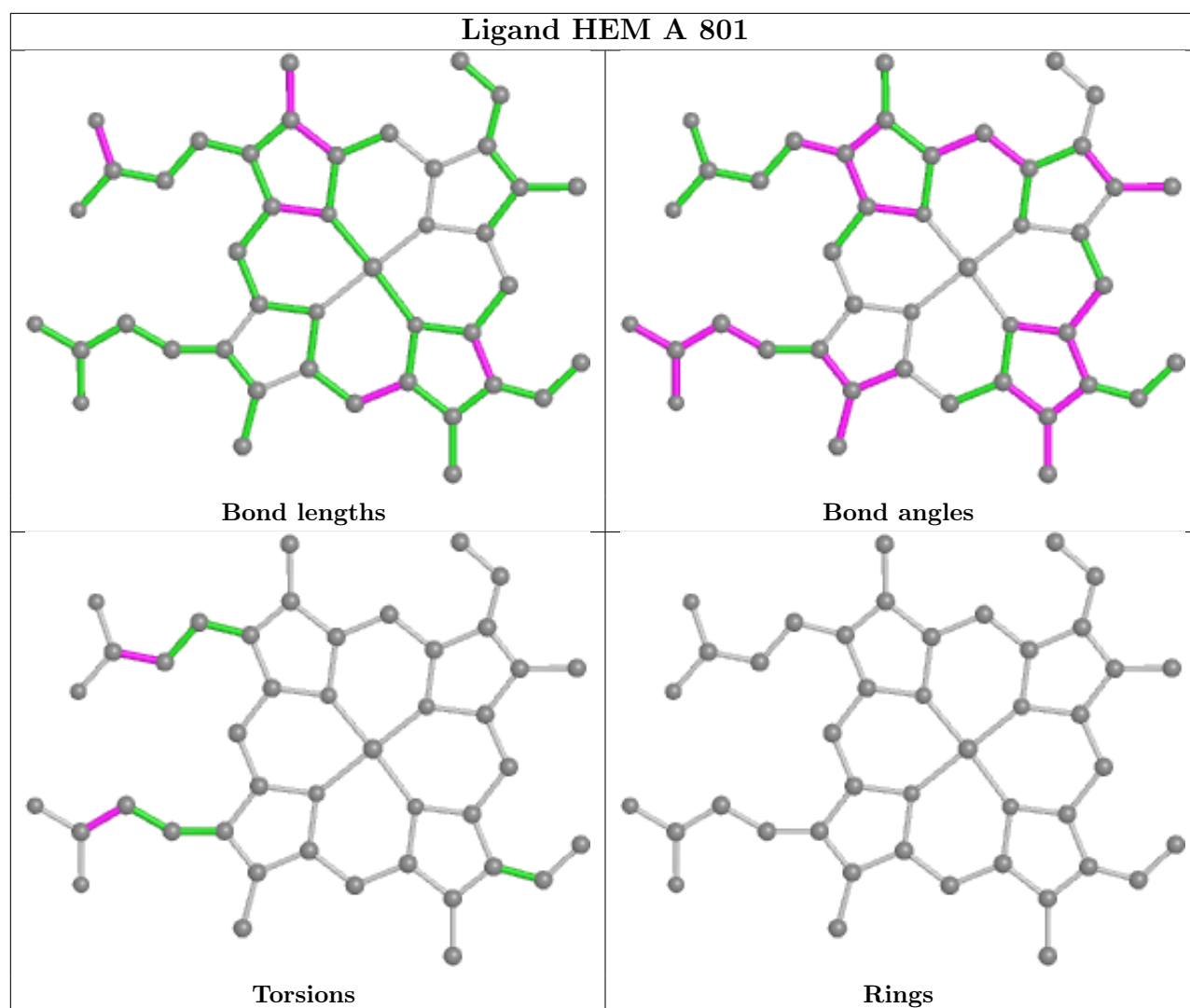
9 monomers are involved in 18 short contacts:

Mol	Chain	Res	Type	Clashes	Symm-Clashes
5	B	807	MPD	1	0
5	A	805	MPD	2	0
7	A	810	NIZ	3	0
7	B	809	NIZ	2	0
7	B	810	NIZ	4	0
7	A	809	NIZ	1	0
5	A	804	MPD	1	0
2	B	801	HEM	1	0
5	B	804	MPD	3	0

The following is a two-dimensional graphical depiction of Mogul quality analysis of bond lengths, bond angles, torsion angles, and ring geometry for all instances of the Ligand of Interest. In

addition, ligands with molecular weight > 250 and outliers as shown on the validation Tables will also be included. For torsion angles, if less than 5% of the Mogul distribution of torsion angles is within 10 degrees of the torsion angle in question, then that torsion angle is considered an outlier. Any bond that is central to one or more torsion angles identified as an outlier by Mogul will be highlighted in the graph. For rings, the root-mean-square deviation (RMSD) between the ring in question and similar rings identified by Mogul is calculated over all ring torsion angles. If the average RMSD is greater than 60 degrees and the minimal RMSD between the ring in question and any Mogul-identified rings is also greater than 60 degrees, then that ring is considered an outlier. The outliers are highlighted in purple. The color gray indicates Mogul did not find sufficient equivalents in the CSD to analyse the geometry.





5.7 Other polymers [i](#)

There are no such residues in this entry.

5.8 Polymer linkage issues [i](#)

There are no chain breaks in this entry.

6 Fit of model and data [i](#)

6.1 Protein, DNA and RNA chains [i](#)

In the following table, the column labelled ‘#RSRZ > 2’ contains the number (and percentage) of RSRZ outliers, followed by percent RSRZ outliers for the chain as percentile scores relative to all X-ray entries and entries of similar resolution. The OWAB column contains the minimum, median, 95th percentile and maximum values of the occupancy-weighted average B-factor per residue. The column labelled ‘Q < 0.9’ lists the number of (and percentage) of residues with an average occupancy less than 0.9.

Mol	Chain	Analysed	<RSRZ>	#RSRZ>2	OWAB(Å ²)	Q<0.9
1	A	713/728 (97%)	-0.36	16 (2%) 62 63	18, 26, 47, 79	0
1	B	713/728 (97%)	-0.41	8 (1%) 80 82	17, 24, 43, 77	0
All	All	1426/1456 (97%)	-0.39	24 (1%) 70 72	17, 25, 45, 79	0

The worst 5 of 24 RSRZ outliers are listed below:

Mol	Chain	Res	Type	RSRZ
1	A	541	GLY	5.9
1	B	679	ALA	5.2
1	A	680	ALA	4.0
1	B	748	ALA	3.8
1	A	679	ALA	3.8

6.2 Non-standard residues in protein, DNA, RNA chains [i](#)

There are no non-standard protein/DNA/RNA residues in this entry.

6.3 Carbohydrates [i](#)

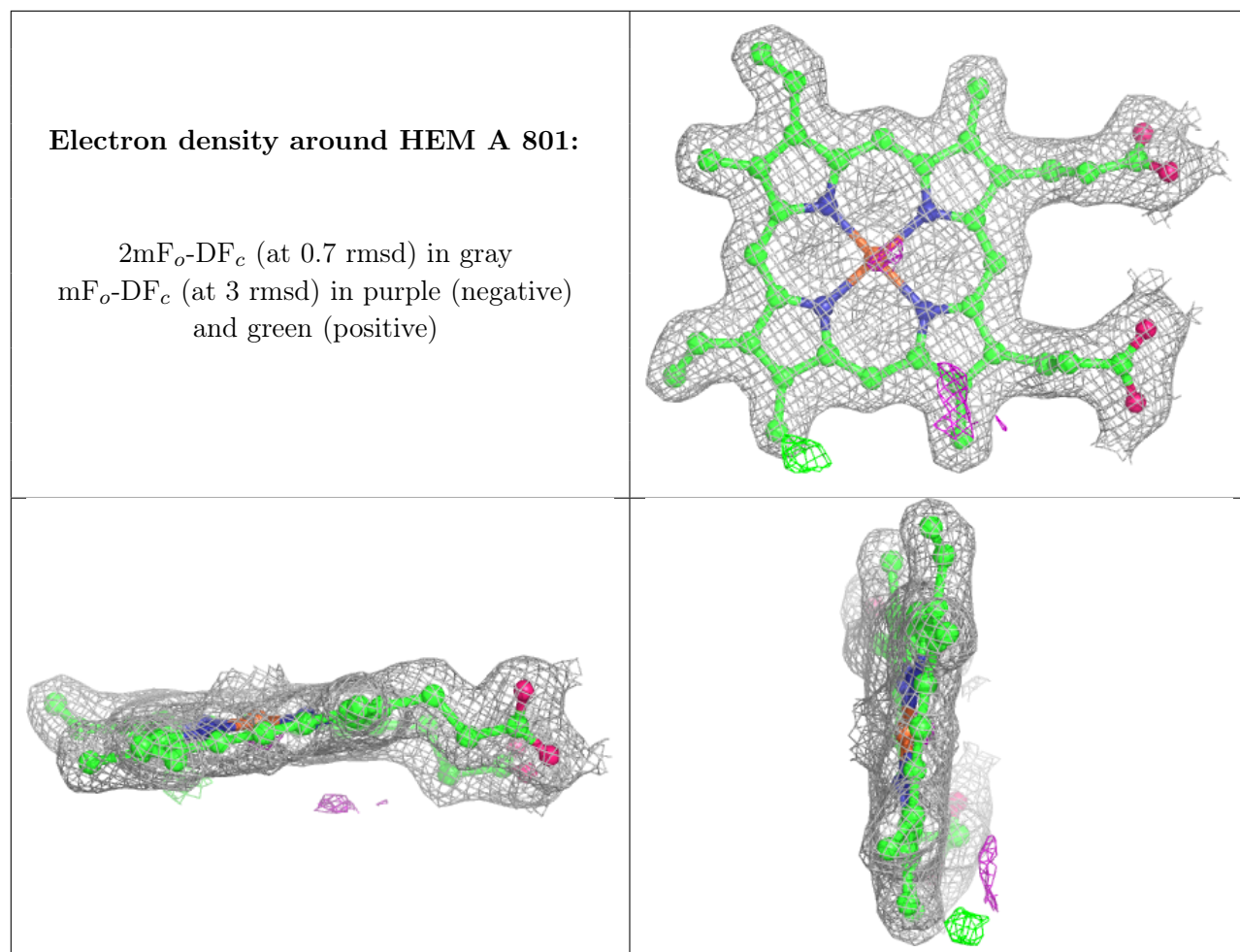
There are no monosaccharides in this entry.

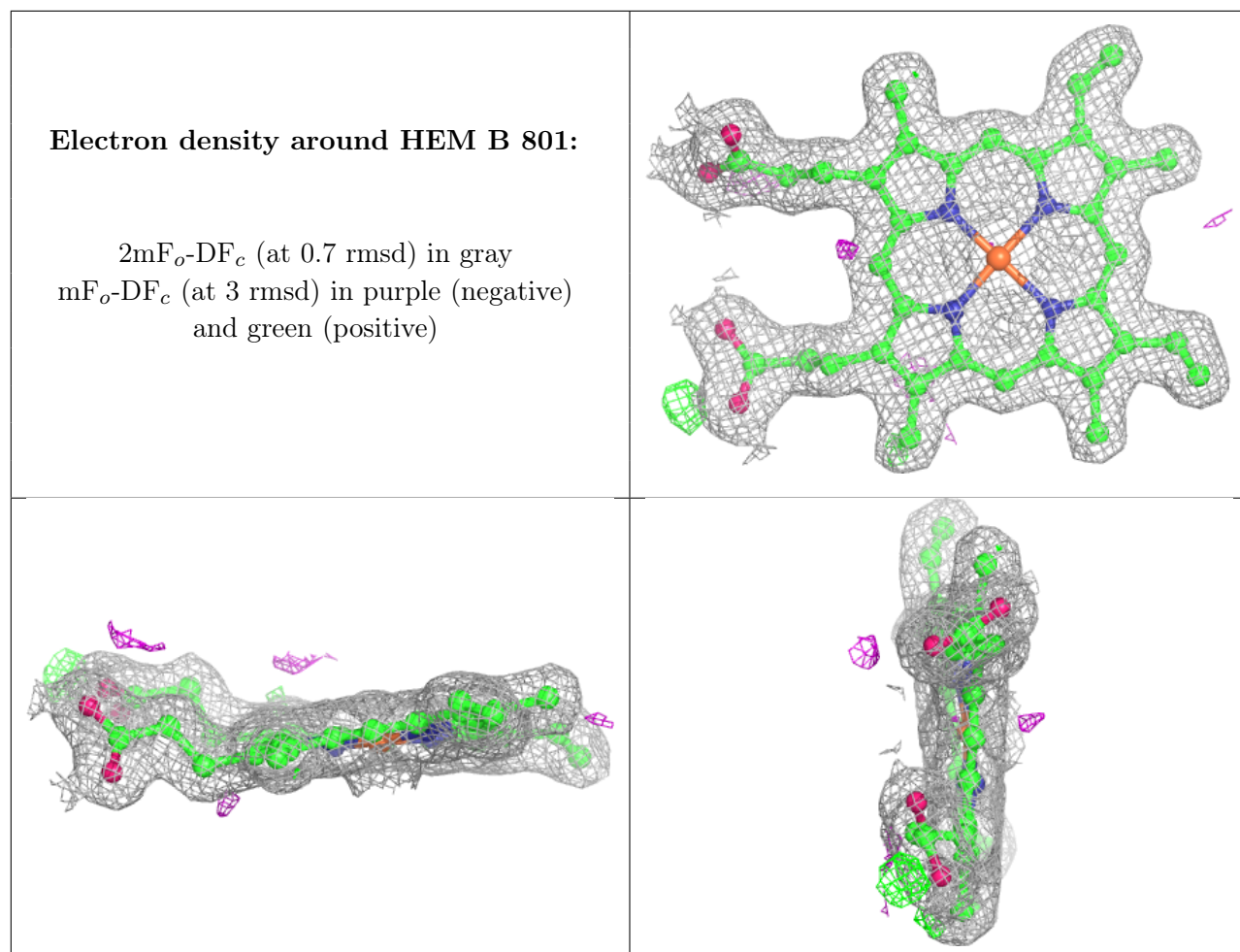
6.4 Ligands [i](#)

In the following table, the Atoms column lists the number of modelled atoms in the group and the number defined in the chemical component dictionary. The B-factors column lists the minimum, median, 95th percentile and maximum values of B factors of atoms in the group. The column labelled ‘Q < 0.9’ lists the number of atoms with occupancy less than 0.9.

Mol	Type	Chain	Res	Atoms	RSCC	RSR	B-factors(Å ²)	Q<0.9
7	NIZ	A	810	10/10	0.73	0.24	46,56,61,64	0
7	NIZ	B	810	10/10	0.77	0.22	37,47,54,58	0
5	MPD	A	808	8/8	0.79	0.28	59,72,80,81	0
5	MPD	A	806	8/8	0.81	0.18	46,65,70,71	0
5	MPD	A	804	8/8	0.82	0.21	54,57,69,69	0
5	MPD	A	805	8/8	0.83	0.27	56,62,80,81	0
6	PO4	A	807	5/5	0.83	0.22	59,93,95,99	0
6	PO4	B	808	5/5	0.84	0.37	51,76,92,94	0
5	MPD	B	807	8/8	0.88	0.22	49,58,62,65	0
5	MPD	B	806	8/8	0.89	0.16	47,63,73,76	0
7	NIZ	A	809	10/10	0.90	0.15	39,44,52,58	0
7	NIZ	B	809	10/10	0.92	0.11	32,36,40,41	0
5	MPD	B	804	8/8	0.92	0.16	45,58,67,71	0
5	MPD	B	805	8/8	0.95	0.11	47,49,53,55	0
4	CL	A	803	1/1	0.99	0.08	35,35,35,35	0
4	CL	B	803	1/1	0.99	0.08	30,30,30,30	0
2	HEM	A	801	43/43	0.99	0.08	19,21,25,27	0
2	HEM	B	801	43/43	0.99	0.11	15,19,21,23	0
3	NA	A	802	1/1	1.00	0.06	21,21,21,21	0
3	NA	B	802	1/1	1.00	0.05	20,20,20,20	0

The following is a graphical depiction of the model fit to experimental electron density of all instances of the Ligand of Interest. In addition, ligands with molecular weight > 250 and outliers as shown on the geometry validation Tables will also be included. Each fit is shown from different orientation to approximate a three-dimensional view.





6.5 Other polymers [i](#)

There are no such residues in this entry.