



wwPDB X-ray Structure Validation Summary Report ⓘ

Sep 3, 2023 – 09:29 PM EDT

PDB ID : 3S1T
Title : Structure of the regulatory domain of aspartokinase (Rv3709c; AK-beta) in complex with threonine from Mycobacterium tuberculosis
Authors : Schuldt, L.; Mueller-Dieckmann, J.; Weiss, M.S.
Deposited on : 2011-05-16
Resolution : 1.63 Å(reported)

This is a wwPDB X-ray Structure Validation Summary Report for a publicly released PDB entry.

We welcome your comments at validation@mail.wwpdb.org

A user guide is available at

<https://www.wwpdb.org/validation/2017/XrayValidationReportHelp>

with specific help available everywhere you see the ⓘ symbol.

The types of validation reports are described at

<http://www.wwpdb.org/validation/2017/FAQs#types>.

The following versions of software and data (see [references ⓘ](#)) were used in the production of this report:

MolProbity : 4.02b-467
Mogul : 1.8.5 (274361), CSD as541be (2020)
Xtriage (Phenix) : 1.13
EDS : 2.35
Percentile statistics : 20191225.v01 (using entries in the PDB archive December 25th 2019)
Refmac : 5.8.0158
CCP4 : 7.0.044 (Gargrove)
Ideal geometry (proteins) : Engh & Huber (2001)
Ideal geometry (DNA, RNA) : Parkinson et al. (1996)
Validation Pipeline (wwPDB-VP) : 2.35

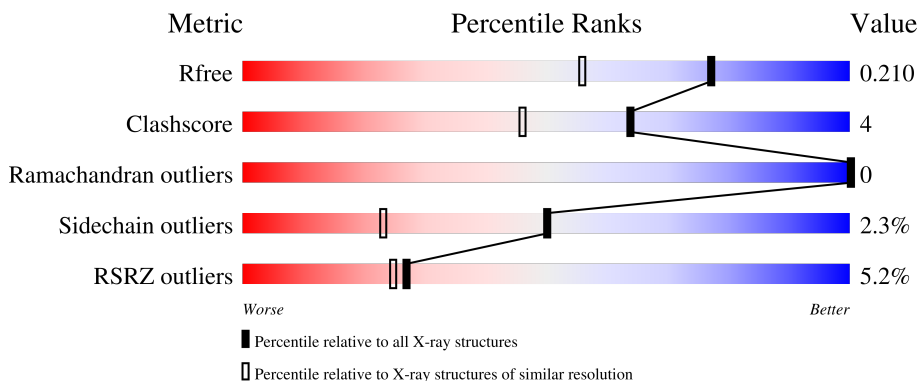
1 Overall quality at a glance

The following experimental techniques were used to determine the structure:

X-RAY DIFFRACTION

The reported resolution of this entry is 1.63 Å.

Percentile scores (ranging between 0-100) for global validation metrics of the entry are shown in the following graphic. The table shows the number of entries on which the scores are based.



Metric	Whole archive (#Entries)	Similar resolution (#Entries, resolution range(Å))
R_{free}	130704	3122 (1.66-1.62)
Clashscore	141614	3268 (1.66-1.62)
Ramachandran outliers	138981	3215 (1.66-1.62)
Sidechain outliers	138945	3215 (1.66-1.62)
RSRZ outliers	127900	3079 (1.66-1.62)

The table below summarises the geometric issues observed across the polymeric chains and their fit to the electron density. The red, orange, yellow and green segments of the lower bar indicate the fraction of residues that contain outliers for ≥ 3 , 2, 1 and 0 types of geometric quality criteria respectively. A grey segment represents the fraction of residues that are not modelled. The numeric value for each fraction is indicated below the corresponding segment, with a dot representing fractions $\leq 5\%$. The upper red bar (where present) indicates the fraction of residues that have poor fit to the electron density. The numeric value is given above the bar.

Mol	Chain	Length	Quality of chain
1	A	181	 3% 82% 6% 13%
1	B	181	 3% 80% 6% .. 14%
2	C	11	 55% 100%

2 Entry composition

There are 5 unique types of molecules in this entry. The entry contains 2713 atoms, of which 0 are hydrogens and 0 are deuteriums.

In the tables below, the ZeroOcc column contains the number of atoms modelled with zero occupancy, the AltConf column contains the number of residues with at least one atom in alternate conformation and the Trace column contains the number of residues modelled with at most 2 atoms.

- Molecule 1 is a protein called Aspartokinase.

Mol	Chain	Residues	Atoms					ZeroOcc	AltConf	Trace
			Total	C	N	O	S			
1	A	158	1174	738	200	231	5	0	1	0
1	B	156	1190	752	198	234	6	0	6	0

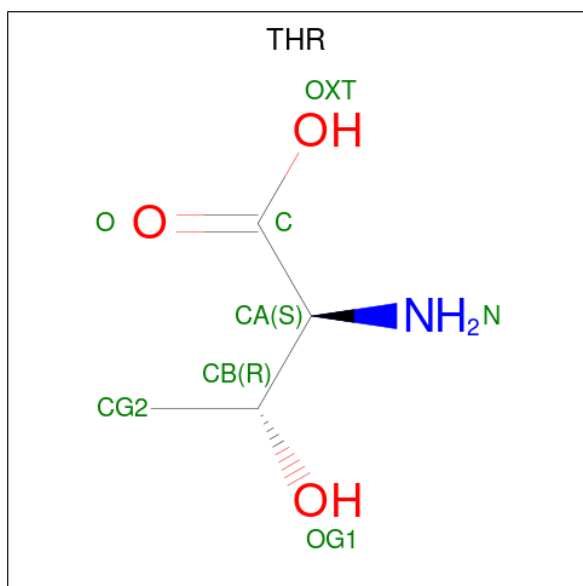
There are 20 discrepancies between the modelled and reference sequences:

Chain	Residue	Modelled	Actual	Comment	Reference
A	0	MET	-	expression tag	UNP P0A4Z8
A	1	SER	-	expression tag	UNP P0A4Z8
A	173	LEU	-	expression tag	UNP P0A4Z8
A	174	GLU	-	expression tag	UNP P0A4Z8
A	175	HIS	-	expression tag	UNP P0A4Z8
A	176	HIS	-	expression tag	UNP P0A4Z8
A	177	HIS	-	expression tag	UNP P0A4Z8
A	178	HIS	-	expression tag	UNP P0A4Z8
A	179	HIS	-	expression tag	UNP P0A4Z8
A	180	HIS	-	expression tag	UNP P0A4Z8
B	0	MET	-	expression tag	UNP P0A4Z8
B	1	SER	-	expression tag	UNP P0A4Z8
B	173	LEU	-	expression tag	UNP P0A4Z8
B	174	GLU	-	expression tag	UNP P0A4Z8
B	175	HIS	-	expression tag	UNP P0A4Z8
B	176	HIS	-	expression tag	UNP P0A4Z8
B	177	HIS	-	expression tag	UNP P0A4Z8
B	178	HIS	-	expression tag	UNP P0A4Z8
B	179	HIS	-	expression tag	UNP P0A4Z8
B	180	HIS	-	expression tag	UNP P0A4Z8

- Molecule 2 is a protein called Aspartokinase.

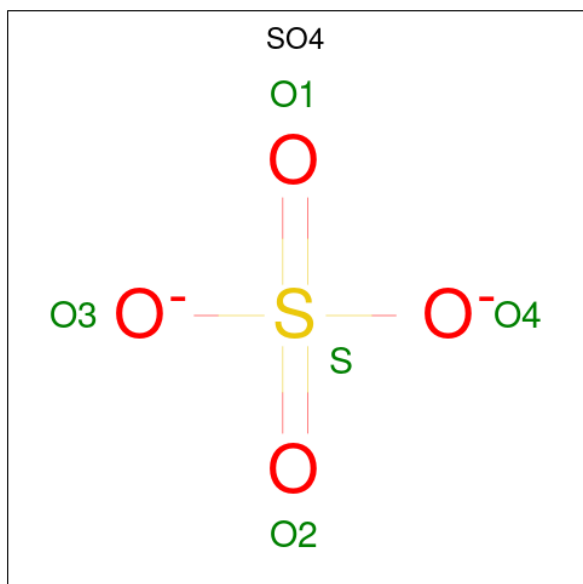
Mol	Chain	Residues	Atoms				ZeroOcc	AltConf	Trace
			Total	C	N	O			
2	C	11	79	49	14	16	0	0	0

- Molecule 3 is THREONINE (three-letter code: THR) (formula: $C_4H_9NO_3$).



Mol	Chain	Residues	Atoms				ZeroOcc	AltConf
			Total	C	N	O		
3	A	1	8	4	1	3	0	0
3	B	1	8	4	1	3	0	0

- Molecule 4 is SULFATE ION (three-letter code: SO₄) (formula: O_4S).



Mol	Chain	Residues	Atoms	ZeroOcc	AltConf
4	A	1	Total O S 5 4 1	0	0
4	A	1	Total O S 5 4 1	0	0
4	A	1	Total O S 5 4 1	0	0
4	A	1	Total O S 5 4 1	0	0
4	B	1	Total O S 5 4 1	0	0
4	B	1	Total O S 5 4 1	0	0
4	B	1	Total O S 5 4 1	0	0

- Molecule 5 is water.

Mol	Chain	Residues	Atoms	ZeroOcc	AltConf
5	A	121	Total O 121 121	0	0
5	B	95	Total O 95 95	0	0
5	C	3	Total O 3 3	0	0

4 Data and refinement statistics

Property	Value	Source
Space group	P 21 21 21	Depositor
Cell constants a, b, c, α , β , γ	53.70Å 63.43Å 108.85Å 90.00° 90.00° 90.00°	Depositor
Resolution (Å)	30.00 – 1.63 41.30 – 1.63	Depositor EDS
% Data completeness (in resolution range)	99.0 (30.00-1.63) 98.9 (41.30-1.63)	Depositor EDS
R_{merge}	(Not available)	Depositor
R_{sym}	(Not available)	Depositor
$\langle I/\sigma(I) \rangle$ ¹	2.38 (at 1.63Å)	Xtrriage
Refinement program	REFMAC 5.6.0091	Depositor
R, R_{free}	0.193 , 0.211 0.193 , 0.210	Depositor DCC
R_{free} test set	1450 reflections (3.11%)	wwPDB-VP
Wilson B-factor (Å ²)	20.0	Xtrriage
Anisotropy	0.120	Xtrriage
Bulk solvent k_{sol} (e/Å ³), B_{sol} (Å ²)	0.37 , 38.8	EDS
L-test for twinning ²	$\langle L \rangle = 0.49$, $\langle L^2 \rangle = 0.33$	Xtrriage
Estimated twinning fraction	No twinning to report.	Xtrriage
F_o, F_c correlation	0.96	EDS
Total number of atoms	2713	wwPDB-VP
Average B, all atoms (Å ²)	23.0	wwPDB-VP

Xtrriage's analysis on translational NCS is as follows: *The largest off-origin peak in the Patterson function is 6.73% of the height of the origin peak. No significant pseudotranslation is detected.*

¹Intensities estimated from amplitudes.

²Theoretical values of $\langle |L| \rangle$, $\langle L^2 \rangle$ for acentric reflections are 0.5, 0.333 respectively for untwinned datasets, and 0.375, 0.2 for perfectly twinned datasets.

5 Model quality i

5.1 Standard geometry i

Bond lengths and bond angles in the following residue types are not validated in this section: SO4

The Z score for a bond length (or angle) is the number of standard deviations the observed value is removed from the expected value. A bond length (or angle) with $|Z| > 5$ is considered an outlier worth inspection. RMSZ is the root-mean-square of all Z scores of the bond lengths (or angles).

Mol	Chain	Bond lengths		Bond angles	
		RMSZ	# Z >5	RMSZ	# Z >5
1	A	0.84	0/1192	0.96	3/1618 (0.2%)
1	B	0.80	0/1223	0.94	2/1660 (0.1%)
2	C	0.80	0/79	0.94	0/106
All	All	0.82	0/2494	0.95	5/3384 (0.1%)

There are no bond length outliers.

All (5) bond angle outliers are listed below:

Mol	Chain	Res	Type	Atoms	Z	Observed(°)	Ideal(°)
1	A	142	ASP	CB-CG-OD1	7.59	125.13	118.30
1	A	13	ARG	NE-CZ-NH1	-7.34	116.63	120.30
1	B	46[A]	MET	CA-CB-CG	6.61	124.54	113.30
1	B	46[B]	MET	CA-CB-CG	6.61	124.54	113.30
1	A	13	ARG	NE-CZ-NH2	5.99	123.30	120.30

There are no chirality outliers.

There are no planarity outliers.

5.2 Too-close contacts i

In the following table, the Non-H and H(model) columns list the number of non-hydrogen atoms and hydrogen atoms in the chain respectively. The H(added) column lists the number of hydrogen atoms added and optimized by MolProbity. The Clashes column lists the number of clashes within the asymmetric unit, whereas Symm-Clashes lists symmetry-related clashes.

Mol	Chain	Non-H	H(model)	H(added)	Clashes	Symm-Clashes
1	A	1174	0	1189	9	0
1	B	1190	0	1218	15	0
2	C	79	0	77	0	0

Continued on next page...

Continued from previous page...

Mol	Chain	Non-H	H(model)	H(added)	Clashes	Symm-Clashes
3	A	8	0	6	0	0
3	B	8	0	6	0	0
4	A	20	0	0	1	0
4	B	15	0	0	0	0
5	A	121	0	0	3	0
5	B	95	0	0	4	0
5	C	3	0	0	0	0
All	All	2713	0	2496	21	0

The all-atom clashscore is defined as the number of clashes found per 1000 atoms (including hydrogen atoms). The all-atom clashscore for this structure is 4.

The worst 5 of 21 close contacts within the same asymmetric unit are listed below, sorted by their clash magnitude.

Atom-1	Atom-2	Interatomic distance (Å)	Clash overlap (Å)
1:B:46[A]:MET:HG2	5:B:277:HOH:O	1.75	0.86
1:B:3:ASP:HB2	1:B:4:PRO:CD	2.09	0.82
4:A:183:SO4:O3	5:A:190:HOH:O	2.02	0.76
1:B:46[A]:MET:SD	5:B:277:HOH:O	2.51	0.68
1:B:46[A]:MET:HG2	1:B:64:THR:OG1	1.95	0.67

There are no symmetry-related clashes.

5.3 Torsion angles [i](#)

5.3.1 Protein backbone [i](#)

In the following table, the Percentiles column shows the percent Ramachandran outliers of the chain as a percentile score with respect to all X-ray entries followed by that with respect to entries of similar resolution.

The Analysed column shows the number of residues for which the backbone conformation was analysed, and the total number of residues.

Mol	Chain	Analysed	Favoured	Allowed	Outliers	Percentiles	
1	A	157/181 (87%)	156 (99%)	1 (1%)	0	100	100
1	B	160/181 (88%)	159 (99%)	1 (1%)	0	100	100
2	C	9/11 (82%)	9 (100%)	0	0	100	100
All	All	326/373 (87%)	324 (99%)	2 (1%)	0	100	100

There are no Ramachandran outliers to report.

5.3.2 Protein sidechains [i](#)

In the following table, the Percentiles column shows the percent sidechain outliers of the chain as a percentile score with respect to all X-ray entries followed by that with respect to entries of similar resolution.

The Analysed column shows the number of residues for which the sidechain conformation was analysed, and the total number of residues.

Mol	Chain	Analysed	Rotameric	Outliers	Percentiles	
1	A	128/146 (88%)	127 (99%)	1 (1%)	81	68
1	B	133/146 (91%)	127 (96%)	6 (4%)	27	6
2	C	7/7 (100%)	7 (100%)	0	100	100
All	All	268/299 (90%)	261 (97%)	7 (3%)	50	19

5 of 7 residues with a non-rotameric sidechain are listed below:

Mol	Chain	Res	Type
1	B	46[B]	MET
1	B	55	GLU
1	B	133	GLU
1	B	106	ARG
1	B	46[A]	MET

Sometimes sidechains can be flipped to improve hydrogen bonding and reduce clashes. All (2) such sidechains are listed below:

Mol	Chain	Res	Type
1	A	82	ASN
1	A	94	HIS

5.3.3 RNA [i](#)

There are no RNA molecules in this entry.

5.4 Non-standard residues in protein, DNA, RNA chains [i](#)

There are no non-standard protein/DNA/RNA residues in this entry.

5.5 Carbohydrates [i](#)

There are no monosaccharides in this entry.

5.6 Ligand geometry [i](#)

9 ligands are modelled in this entry.

In the following table, the Counts columns list the number of bonds (or angles) for which Mogul statistics could be retrieved, the number of bonds (or angles) that are observed in the model and the number of bonds (or angles) that are defined in the Chemical Component Dictionary. The Link column lists molecule types, if any, to which the group is linked. The Z score for a bond length (or angle) is the number of standard deviations the observed value is removed from the expected value. A bond length (or angle) with $|Z| > 2$ is considered an outlier worth inspection. RMSZ is the root-mean-square of all Z scores of the bond lengths (or angles).

Mol	Type	Chain	Res	Link	Bond lengths			Bond angles		
					Counts	RMSZ	$\# Z > 2$	Counts	RMSZ	$\# Z > 2$
4	SO4	B	182	-	4,4,4	0.33	0	6,6,6	0.14	0
4	SO4	A	182	-	4,4,4	0.27	0	6,6,6	0.23	0
4	SO4	B	183	-	4,4,4	0.61	0	6,6,6	0.56	0
4	SO4	A	183	-	4,4,4	0.21	0	6,6,6	0.72	0
4	SO4	B	181	-	4,4,4	0.38	0	6,6,6	0.63	0
3	THR	A	301	-	6,7,7	1.10	1 (16%)	7,9,9	1.07	0
3	THR	B	302	-	6,7,7	0.88	0	7,9,9	0.91	0
4	SO4	A	184	-	4,4,4	0.58	0	6,6,6	0.52	0
4	SO4	A	181	-	4,4,4	0.60	0	6,6,6	0.77	0

In the following table, the Chirals column lists the number of chiral outliers, the number of chiral centers analysed, the number of these observed in the model and the number defined in the Chemical Component Dictionary. Similar counts are reported in the Torsion and Rings columns. '-' means no outliers of that kind were identified.

Mol	Type	Chain	Res	Link	Chirals	Torsions	Rings
3	THR	A	301	-	-	1/8/8/8	-
3	THR	B	302	-	-	1/8/8/8	-

All (1) bond length outliers are listed below:

Mol	Chain	Res	Type	Atoms	Z	Observed(Å)	Ideal(Å)
3	A	301	THR	OXT-C	-2.35	1.22	1.30

There are no bond angle outliers.

There are no chirality outliers.

All (2) torsion outliers are listed below:

Mol	Chain	Res	Type	Atoms
3	B	302	THR	OXT-C-CA-N
3	A	301	THR	OXT-C-CA-N

There are no ring outliers.

1 monomer is involved in 1 short contact:

Mol	Chain	Res	Type	Clashes	Symm-Clashes
4	A	183	SO4	1	0

5.7 Other polymers [i](#)

There are no such residues in this entry.

5.8 Polymer linkage issues [i](#)

There are no chain breaks in this entry.

6 Fit of model and data [i](#)

6.1 Protein, DNA and RNA chains [i](#)

In the following table, the column labelled ‘#RSRZ> 2’ contains the number (and percentage) of RSRZ outliers, followed by percent RSRZ outliers for the chain as percentile scores relative to all X-ray entries and entries of similar resolution. The OWAB column contains the minimum, median, 95th percentile and maximum values of the occupancy-weighted average B-factor per residue. The column labelled ‘Q< 0.9’ lists the number of (and percentage) of residues with an average occupancy less than 0.9.

Mol	Chain	Analysed	<RSRZ>	#RSRZ>2	OWAB(Å ²)	Q<0.9
1	A	158/181 (87%)	0.00	5 (3%) 47 46	12, 18, 33, 52	0
1	B	156/181 (86%)	-0.05	6 (3%) 40 38	13, 23, 39, 58	0
2	C	11/11 (100%)	2.20	6 (54%) 0 0	32, 37, 58, 63	0
All	All	325/373 (87%)	0.05	17 (5%) 27 25	12, 21, 39, 63	0

The worst 5 of 17 RSRZ outliers are listed below:

Mol	Chain	Res	Type	RSRZ
1	A	159	GLY	5.6
2	C	173	LEU	4.9
1	A	160	GLY	4.4
1	B	55	GLU	4.2
2	C	167	TYR	3.8

6.2 Non-standard residues in protein, DNA, RNA chains [i](#)

There are no non-standard protein/DNA/RNA residues in this entry.

6.3 Carbohydrates [i](#)

There are no monosaccharides in this entry.

6.4 Ligands [i](#)

In the following table, the Atoms column lists the number of modelled atoms in the group and the number defined in the chemical component dictionary. The B-factors column lists the minimum, median, 95th percentile and maximum values of B factors of atoms in the group. The column labelled ‘Q< 0.9’ lists the number of atoms with occupancy less than 0.9.

Mol	Type	Chain	Res	Atoms	RSCC	RSR	B-factors(\AA^2)	Q<0.9
4	SO4	A	184	5/5	0.79	0.22	35,36,40,40	5
4	SO4	B	183	5/5	0.82	0.23	37,38,40,40	5
4	SO4	A	183	5/5	0.94	0.18	29,30,31,33	5
4	SO4	A	181	5/5	0.96	0.15	29,30,32,32	0
3	THR	B	302	8/8	0.96	0.10	12,13,14,14	0
4	SO4	B	181	5/5	0.97	0.09	32,33,36,36	5
3	THR	A	301	8/8	0.97	0.07	10,11,12,12	0
4	SO4	B	182	5/5	0.98	0.18	34,34,35,36	0
4	SO4	A	182	5/5	0.98	0.13	29,30,32,33	5

6.5 Other polymers [i](#)

There are no such residues in this entry.