



# Full wwPDB X-ray Structure Validation Report ⓘ

Sep 3, 2023 – 05:51 PM EDT

PDB ID : 3S1F  
Title : Asp169Glu mutant of maize cytokinin oxidase/dehydrogenase complexed with N6-isopentenyladenine  
Authors : Kopecny, D.; Briozzo, P.; Morera, S.  
Deposited on : 2011-05-15  
Resolution : 2.00 Å(reported)

This is a Full wwPDB X-ray Structure Validation Report for a publicly released PDB entry.

We welcome your comments at [validation@mail.wwpdb.org](mailto:validation@mail.wwpdb.org)

A user guide is available at

<https://www.wwpdb.org/validation/2017/XrayValidationReportHelp>

with specific help available everywhere you see the ⓘ symbol.

The types of validation reports are described at

<http://www.wwpdb.org/validation/2017/FAQs#types>.

---

The following versions of software and data (see [references ⓘ](#)) were used in the production of this report:

MolProbity : 4.02b-467  
Mogul : 1.8.5 (274361), CSD as541be (2020)  
Xtriage (Phenix) : 1.13  
EDS : 2.35  
buster-report : 1.1.7 (2018)  
Percentile statistics : 20191225.v01 (using entries in the PDB archive December 25th 2019)  
Refmac : 5.8.0158  
CCP4 : 7.0.044 (Gargrove)  
Ideal geometry (proteins) : Engh & Huber (2001)  
Ideal geometry (DNA, RNA) : Parkinson et al. (1996)  
Validation Pipeline (wwPDB-VP) : 2.35

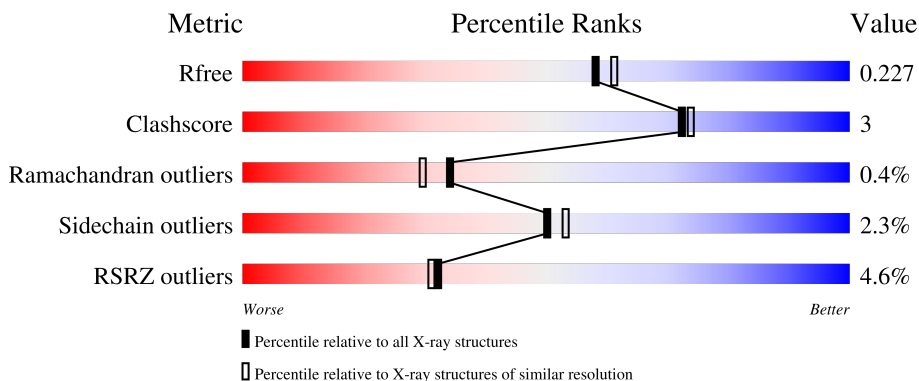
# 1 Overall quality at a glance

The following experimental techniques were used to determine the structure:

*X-RAY DIFFRACTION*

The reported resolution of this entry is 2.00 Å.

Percentile scores (ranging between 0-100) for global validation metrics of the entry are shown in the following graphic. The table shows the number of entries on which the scores are based.



Metric	Whole archive (#Entries)	Similar resolution (#Entries, resolution range(Å))
$R_{free}$	130704	8085 (2.00-2.00)
Clashscore	141614	9178 (2.00-2.00)
Ramachandran outliers	138981	9054 (2.00-2.00)
Sidechain outliers	138945	9053 (2.00-2.00)
RSRZ outliers	127900	7900 (2.00-2.00)

The table below summarises the geometric issues observed across the polymeric chains and their fit to the electron density. The red, orange, yellow and green segments of the lower bar indicate the fraction of residues that contain outliers for  $\geq 3$ , 2, 1 and 0 types of geometric quality criteria respectively. A grey segment represents the fraction of residues that are not modelled. The numeric value for each fraction is indicated below the corresponding segment, with a dot representing fractions  $\leq 5\%$ . The upper red bar (where present) indicates the fraction of residues that have poor fit to the electron density. The numeric value is given above the bar.

Mol	Chain	Length	Quality of chain
1	A	516	 4% 90% 6%
2	B	2	 100%

The following table lists non-polymeric compounds, carbohydrate monomers and non-standard residues in protein, DNA, RNA chains that are outliers for geometric or electron-density-fit criteria:

Mol	Type	Chain	Res	Chirality	Geometry	Clashes	Electron density
7	GOL	A	538	-	-	X	-
7	GOL	A	543	-	-	-	X
7	GOL	A	544	-	-	X	-

## 2 Entry composition [i](#)

There are 8 unique types of molecules in this entry. The entry contains 4302 atoms, of which 0 are hydrogens and 0 are deuteriums.

In the tables below, the ZeroOcc column contains the number of atoms modelled with zero occupancy, the AltConf column contains the number of residues with at least one atom in alternate conformation and the Trace column contains the number of residues modelled with at most 2 atoms.

- Molecule 1 is a protein called Cytokinin dehydrogenase 1.

Mol	Chain	Residues	Atoms					ZeroOcc	AltConf	Trace
			Total	C	N	O	S			
1	A	498	3803	2416	667	708	12	0	2	0

There are 4 discrepancies between the modelled and reference sequences:

Chain	Residue	Modelled	Actual	Comment	Reference
A	79	ALA	GLY	SEE REMARK 999	UNP Q9T0N8
A	168	THR	ASN	SEE REMARK 999	UNP Q9T0N8
A	169	GLU	ASP	engineered mutation	UNP Q9T0N8
A	254	LEU	PHE	SEE REMARK 999	UNP Q9T0N8

- Molecule 2 is an oligosaccharide called 2-acetamido-2-deoxy-beta-D-glucopyranose-(1-4)-2-acetamido-2-deoxy-beta-D-glucopyranose.



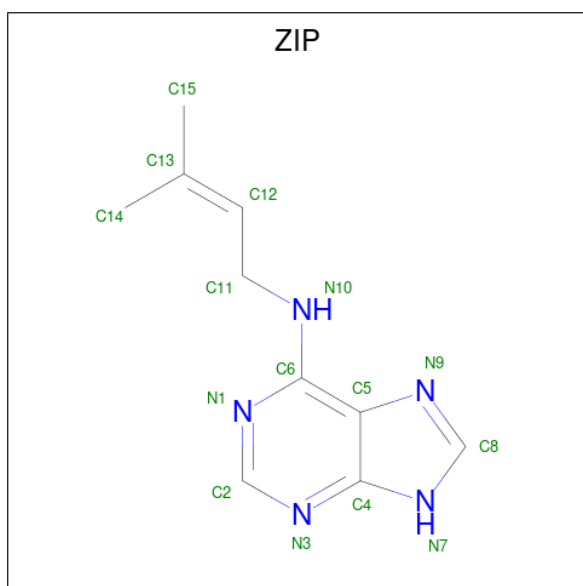
Mol	Chain	Residues	Atoms				ZeroOcc	AltConf	Trace
			Total	C	N	O			
2	B	2	28	16	2	10	0	0	0

- Molecule 3 is FLAVIN-ADENINE DINUCLEOTIDE (three-letter code: FAD) (formula: C<sub>27</sub>H<sub>33</sub>N<sub>9</sub>O<sub>15</sub>P<sub>2</sub>).



Mol	Chain	Residues	Atoms					ZeroOcc	AltConf
			Total	C	N	O	P		
3	A	1	53	27	9	15	2	0	0

- Molecule 4 is N-(3-METHYLBUT-2-EN-1-YL)-9H-PURIN-6-AMINE (three-letter code: ZIP) (formula: C<sub>10</sub>H<sub>13</sub>N<sub>5</sub>).



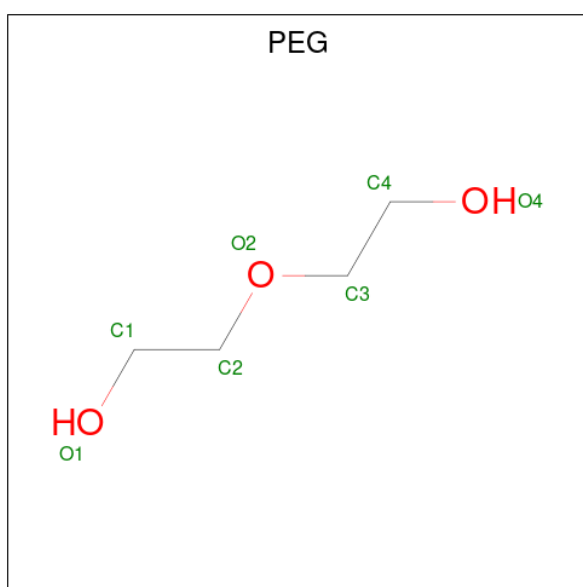
Mol	Chain	Residues	Atoms			ZeroOcc	AltConf
			Total	C	N		
4	A	1	15	10	5	0	0

- Molecule 5 is 2-acetamido-2-deoxy-beta-D-glucopyranose (three-letter code: NAG) (formula: C<sub>8</sub>H<sub>15</sub>NO<sub>6</sub>).



Mol	Chain	Residues	Atoms				ZeroOcc	AltConf
			Total	C	N	O		
5	A	1	Total	C	N	O	0	0
			14	8	1	5		
5	A	1	Total	C	N	O	0	0
			14	8	1	5		
5	A	1	Total	C	N	O	0	0
			14	8	1	5		

- Molecule 6 is DI(HYDROXYETHYL)ETHER (three-letter code: PEG) (formula:  $C_4H_{10}O_3$ ).



Mol	Chain	Residues	Atoms			ZeroOcc	AltConf
			Total	C	O		
6	A	1	Total	C	O	0	0
			7	4	3		

- Molecule 7 is GLYCEROL (three-letter code: GOL) (formula:  $C_3H_8O_3$ ).



Mol	Chain	Residues	Atoms	ZeroOcc	AltConf
7	A	1	Total C O 6 3 3	0	0
7	A	1	Total C O 6 3 3	0	0
7	A	1	Total C O 6 3 3	0	0
7	A	1	Total C O 6 3 3	0	0
7	A	1	Total C O 6 3 3	0	0
7	A	1	Total C O 6 3 3	0	0
7	A	1	Total C O 6 3 3	0	0
7	A	1	Total C O 6 3 3	0	0

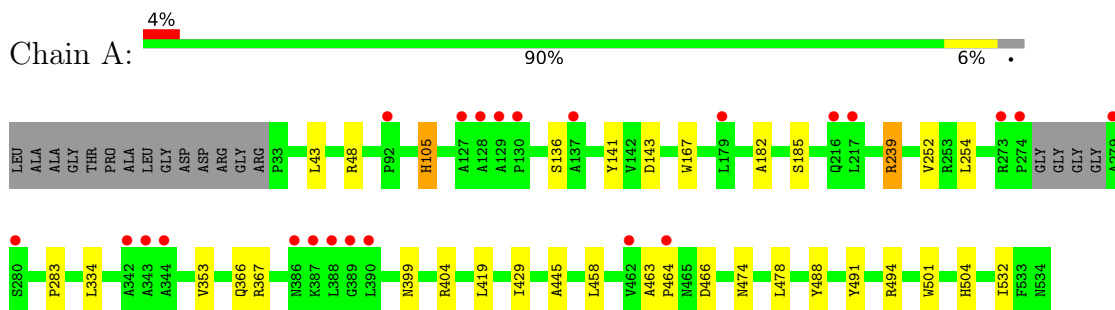
- Molecule 8 is water.

Mol	Chain	Residues	Atoms	ZeroOcc	AltConf
8	A	306	Total O 306 306	0	0

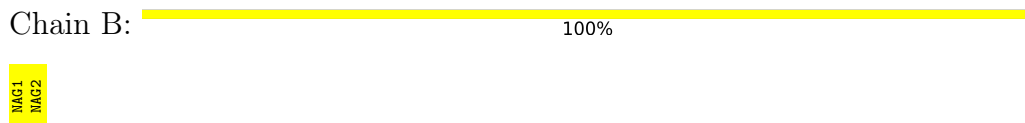
### 3 Residue-property plots [i](#)

These plots are drawn for all protein, RNA, DNA and oligosaccharide chains in the entry. The first graphic for a chain summarises the proportions of the various outlier classes displayed in the second graphic. The second graphic shows the sequence view annotated by issues in geometry and electron density. Residues are color-coded according to the number of geometric quality criteria for which they contain at least one outlier: green = 0, yellow = 1, orange = 2 and red = 3 or more. A red dot above a residue indicates a poor fit to the electron density ( $RSRZ > 2$ ). Stretches of 2 or more consecutive residues without any outlier are shown as a green connector. Residues present in the sample, but not in the model, are shown in grey.

- Molecule 1: Cytokinin dehydrogenase 1



- Molecule 2: 2-acetamido-2-deoxy-beta-D-glucopyranose-(1-4)-2-acetamido-2-deoxy-beta-D-glucopyranose





## 4 Data and refinement statistics

Property	Value	Source
Space group	C 1 2 1	Depositor
Cell constants a, b, c, $\alpha$ , $\beta$ , $\gamma$	250.17Å 50.67Å 51.21Å 90.00° 94.02° 90.00°	Depositor
Resolution (Å)	31.19 – 2.00 29.89 – 2.00	Depositor EDS
% Data completeness (in resolution range)	(Not available) (31.19-2.00) 99.1 (29.89-2.00)	Depositor EDS
$R_{merge}$	0.06	Depositor
$R_{sym}$	(Not available)	Depositor
$\langle I/\sigma(I) \rangle$ <sup>1</sup>	3.03 (at 2.00Å)	Xtrriage
Refinement program	BUSTER 2.8.0	Depositor
R, $R_{free}$	0.178 , 0.218 0.183 , 0.227	Depositor DCC
$R_{free}$ test set	2178 reflections (5.04%)	wwPDB-VP
Wilson B-factor (Å <sup>2</sup> )	24.1	Xtrriage
Anisotropy	0.088	Xtrriage
Bulk solvent $k_{sol}$ (e/Å <sup>3</sup> ), $B_{sol}$ (Å <sup>2</sup> )	0.38 , 54.5	EDS
L-test for twinning <sup>2</sup>	$\langle  L  \rangle = 0.47$ , $\langle L^2 \rangle = 0.30$	Xtrriage
Estimated twinning fraction	No twinning to report.	Xtrriage
$F_o, F_c$ correlation	0.95	EDS
Total number of atoms	4302	wwPDB-VP
Average B, all atoms (Å <sup>2</sup> )	29.0	wwPDB-VP

Xtrriage's analysis on translational NCS is as follows: *The largest off-origin peak in the Patterson function is 5.96% of the height of the origin peak. No significant pseudotranslation is detected.*

<sup>1</sup>Intensities estimated from amplitudes.

<sup>2</sup>Theoretical values of  $\langle |L| \rangle$ ,  $\langle L^2 \rangle$  for acentric reflections are 0.5, 0.333 respectively for untwinned datasets, and 0.375, 0.2 for perfectly twinned datasets.

## 5 Model quality [i](#)

### 5.1 Standard geometry [i](#)

Bond lengths and bond angles in the following residue types are not validated in this section: GOL, NAG, PEG, FAD, ZIP

The Z score for a bond length (or angle) is the number of standard deviations the observed value is removed from the expected value. A bond length (or angle) with  $|Z| > 5$  is considered an outlier worth inspection. RMSZ is the root-mean-square of all Z scores of the bond lengths (or angles).

Mol	Chain	Bond lengths		Bond angles	
		RMSZ	# Z  >5	RMSZ	# Z  >5
1	A	0.50	0/3906	0.64	0/5321

There are no bond length outliers.

There are no bond angle outliers.

There are no chirality outliers.

There are no planarity outliers.

### 5.2 Too-close contacts [i](#)

In the following table, the Non-H and H(model) columns list the number of non-hydrogen atoms and hydrogen atoms in the chain respectively. The H(added) column lists the number of hydrogen atoms added and optimized by MolProbity. The Clashes column lists the number of clashes within the asymmetric unit, whereas Symm-Clashes lists symmetry-related clashes.

Mol	Chain	Non-H	H(model)	H(added)	Clashes	Symm-Clashes
1	A	3803	0	3728	22	0
2	B	28	0	25	0	0
3	A	53	0	30	2	0
4	A	15	0	13	3	0
5	A	42	0	39	0	0
6	A	7	0	10	0	0
7	A	48	0	64	13	0
8	A	306	0	0	3	0
All	All	4302	0	3909	27	0

The all-atom clashscore is defined as the number of clashes found per 1000 atoms (including hydrogen atoms). The all-atom clashscore for this structure is 3.

All (27) close contacts within the same asymmetric unit are listed below, sorted by their clash

magnitude.

Atom-1	Atom-2	Interatomic distance (Å)	Clash overlap (Å)
7:A:538:GOL:H12	8:A:750:HOH:O	1.75	0.87
1:A:429:ILE:HG12	7:A:544:GOL:H2	1.66	0.75
1:A:105:HIS:HE1	3:A:535:FAD:HM71	1.64	0.63
1:A:474:ASN:HB3	7:A:539:GOL:H11	1.81	0.62
1:A:105:HIS:CE1	3:A:535:FAD:HM71	2.37	0.59
1:A:252:VAL:HG12	1:A:366:GLN:HG2	1.85	0.58
1:A:283:PRO:HG2	1:A:353:VAL:HG21	1.84	0.57
7:A:544:GOL:H32	7:A:545:GOL:H32	1.85	0.57
1:A:458:LEU:HD11	4:A:536:ZIP:H112	1.90	0.53
1:A:504:HIS:HE1	7:A:538:GOL:O2	1.91	0.52
1:A:48:ARG:HH11	7:A:542:GOL:H31	1.74	0.52
1:A:136:SER:HB3	1:A:141:TYR:CE1	2.45	0.51
1:A:463:ALA:HB3	1:A:466:ASP:HB2	1.92	0.50
1:A:504:HIS:CE1	7:A:538:GOL:H11	2.47	0.50
1:A:141:TYR:CD1	1:A:239:ARG:HD2	2.48	0.48
1:A:141:TYR:CE1	1:A:239:ARG:HD2	2.49	0.48
1:A:504:HIS:HD2	8:A:997:HOH:O	1.96	0.47
7:A:538:GOL:H31	8:A:750:HOH:O	2.13	0.47
1:A:167:TRP:O	1:A:185:SER:HB2	2.16	0.45
4:A:536:ZIP:H8	7:A:544:GOL:H31	1.99	0.44
1:A:445:ALA:H	7:A:538:GOL:C2	2.31	0.44
1:A:501:TRP:CE2	1:A:532:ILE:HG12	2.52	0.44
1:A:488:TYR:O	7:A:541:GOL:H32	2.18	0.43
1:A:478:LEU:HD11	7:A:539:GOL:H12	1.99	0.43
1:A:143:ASP:OD1	1:A:239:ARG:HD3	2.18	0.42
1:A:399:ASN:HB2	1:A:491:TYR:O	2.19	0.42
4:A:536:ZIP:C8	7:A:544:GOL:H31	2.51	0.40

There are no symmetry-related clashes.

## 5.3 Torsion angles

### 5.3.1 Protein backbone

In the following table, the Percentiles column shows the percent Ramachandran outliers of the chain as a percentile score with respect to all X-ray entries followed by that with respect to entries of similar resolution.

The Analysed column shows the number of residues for which the backbone conformation was analysed, and the total number of residues.

Mol	Chain	Analysed	Favoured	Allowed	Outliers	Percentiles
1	A	496/516 (96%)	485 (98%)	9 (2%)	2 (0%)	34 30

All (2) Ramachandran outliers are listed below:

Mol	Chain	Res	Type
1	A	182	ALA
1	A	464	PRO

### 5.3.2 Protein sidechains [i](#)

In the following table, the Percentiles column shows the percent sidechain outliers of the chain as a percentile score with respect to all X-ray entries followed by that with respect to entries of similar resolution.

The Analysed column shows the number of residues for which the sidechain conformation was analysed, and the total number of residues.

Mol	Chain	Analysed	Rotameric	Outliers	Percentiles
1	A	389/395 (98%)	379 (97%)	10 (3%)	46 48

All (10) residues with a non-rotameric sidechain are listed below:

Mol	Chain	Res	Type
1	A	43	LEU
1	A	105	HIS
1	A	239	ARG
1	A	254	LEU
1	A	334	LEU
1	A	367[A]	ARG
1	A	367[B]	ARG
1	A	404	ARG
1	A	419	LEU
1	A	494	ARG

Sometimes sidechains can be flipped to improve hydrogen bonding and reduce clashes. All (2) such sidechains are listed below:

Mol	Chain	Res	Type
1	A	495	HIS
1	A	504	HIS

### 5.3.3 RNA [i](#)

There are no RNA molecules in this entry.

## 5.4 Non-standard residues in protein, DNA, RNA chains [i](#)

There are no non-standard protein/DNA/RNA residues in this entry.

## 5.5 Carbohydrates [i](#)

2 monosaccharides are modelled in this entry.

In the following table, the Counts columns list the number of bonds (or angles) for which Mogul statistics could be retrieved, the number of bonds (or angles) that are observed in the model and the number of bonds (or angles) that are defined in the Chemical Component Dictionary. The Link column lists molecule types, if any, to which the group is linked. The Z score for a bond length (or angle) is the number of standard deviations the observed value is removed from the expected value. A bond length (or angle) with  $|Z| > 2$  is considered an outlier worth inspection. RMSZ is the root-mean-square of all Z scores of the bond lengths (or angles).

Mol	Type	Chain	Res	Link	Bond lengths			Bond angles		
					Counts	RMSZ	# Z  > 2	Counts	RMSZ	# Z  > 2
2	NAG	B	1	1,2	14,14,15	1.49	4 (28%)	17,19,21	1.33	2 (11%)
2	NAG	B	2	2	14,14,15	1.44	1 (7%)	17,19,21	1.27	2 (11%)

In the following table, the Chirals column lists the number of chiral outliers, the number of chiral centers analysed, the number of these observed in the model and the number defined in the Chemical Component Dictionary. Similar counts are reported in the Torsion and Rings columns. '-' means no outliers of that kind were identified.

Mol	Type	Chain	Res	Link	Chirals	Torsions	Rings
2	NAG	B	1	1,2	-	2/6/23/26	0/1/1/1
2	NAG	B	2	2	-	0/6/23/26	0/1/1/1

All (5) bond length outliers are listed below:

Mol	Chain	Res	Type	Atoms	Z	Observed(Å)	Ideal(Å)
2	B	2	NAG	C1-C2	3.77	1.58	1.52
2	B	1	NAG	O5-C1	2.47	1.47	1.43
2	B	1	NAG	C3-C2	2.10	1.57	1.52
2	B	1	NAG	C4-C3	2.07	1.57	1.52
2	B	1	NAG	C1-C2	2.04	1.55	1.52

All (4) bond angle outliers are listed below:

Mol	Chain	Res	Type	Atoms	Z	Observed(°)	Ideal(°)
2	B	2	NAG	C1-O5-C5	3.33	116.71	112.19
2	B	1	NAG	C1-C2-N2	2.44	114.65	110.49
2	B	1	NAG	C3-C4-C5	2.37	114.47	110.24
2	B	2	NAG	O5-C1-C2	2.24	114.83	111.29

There are no chirality outliers.

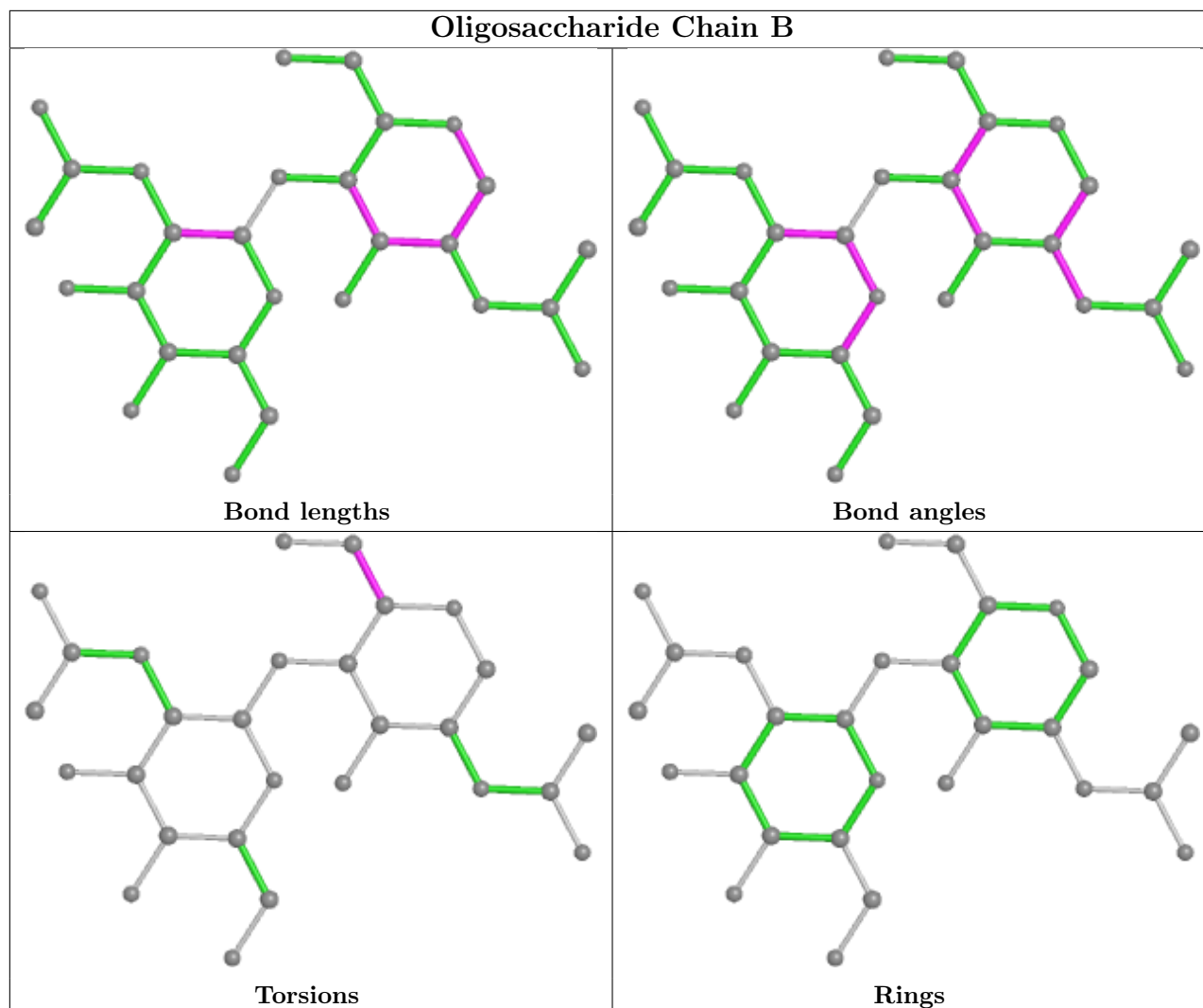
All (2) torsion outliers are listed below:

Mol	Chain	Res	Type	Atoms
2	B	1	NAG	C4-C5-C6-O6
2	B	1	NAG	O5-C5-C6-O6

There are no ring outliers.

No monomer is involved in short contacts.

The following is a two-dimensional graphical depiction of Mogul quality analysis of bond lengths, bond angles, torsion angles, and ring geometry for oligosaccharide.



## 5.6 Ligand geometry [i](#)

14 ligands are modelled in this entry.

In the following table, the Counts columns list the number of bonds (or angles) for which Mogul statistics could be retrieved, the number of bonds (or angles) that are observed in the model and the number of bonds (or angles) that are defined in the Chemical Component Dictionary. The Link column lists molecule types, if any, to which the group is linked. The Z score for a bond length (or angle) is the number of standard deviations the observed value is removed from the expected value. A bond length (or angle) with  $|Z| > 2$  is considered an outlier worth inspection. RMSZ is the root-mean-square of all Z scores of the bond lengths (or angles).

Mol	Type	Chain	Res	Link	Bond lengths			Bond angles		
					Counts	RMSZ	$\# Z  > 2$	Counts	RMSZ	$\# Z  > 2$
7	GOL	A	541	-	5,5,5	0.60	0	5,5,5	1.12	1 (20%)
5	NAG	A	603	1	14,14,15	1.39	1 (7%)	17,19,21	1.00	1 (5%)
7	GOL	A	545	-	5,5,5	0.56	0	5,5,5	0.53	0

Mol	Type	Chain	Res	Link	Bond lengths			Bond angles		
					Counts	RMSZ	# Z  > 2	Counts	RMSZ	# Z  > 2
5	NAG	A	606	1	14,14,15	1.58	2 (14%)	17,19,21	1.16	2 (11%)
4	ZIP	A	536	-	13,16,16	2.57	7 (53%)	11,21,21	3.59	7 (63%)
7	GOL	A	542	-	5,5,5	0.27	0	5,5,5	0.49	0
3	FAD	A	535	1	53,58,58	1.59	11 (20%)	68,89,89	1.30	10 (14%)
5	NAG	A	602	1	14,14,15	1.25	2 (14%)	17,19,21	1.18	1 (5%)
7	GOL	A	540	-	5,5,5	0.83	0	5,5,5	0.70	0
7	GOL	A	543	-	5,5,5	0.71	0	5,5,5	0.79	0
7	GOL	A	544	-	5,5,5	0.46	0	5,5,5	0.78	0
7	GOL	A	539	-	5,5,5	0.48	0	5,5,5	0.85	0
6	PEG	A	537	-	6,6,6	0.33	0	5,5,5	0.43	0
7	GOL	A	538	-	5,5,5	1.23	0	5,5,5	1.62	1 (20%)

In the following table, the Chirals column lists the number of chiral outliers, the number of chiral centers analysed, the number of these observed in the model and the number defined in the Chemical Component Dictionary. Similar counts are reported in the Torsion and Rings columns. '-' means no outliers of that kind were identified.

Mol	Type	Chain	Res	Link	Chirals	Torsions	Rings
7	GOL	A	541	-	-	2/4/4/4	-
5	NAG	A	603	1	-	0/6/23/26	0/1/1/1
7	GOL	A	545	-	-	3/4/4/4	-
5	NAG	A	606	1	-	0/6/23/26	0/1/1/1
4	ZIP	A	536	-	-	3/6/6/6	0/2/2/2
7	GOL	A	542	-	-	2/4/4/4	-
3	FAD	A	535	1	-	2/30/50/50	0/6/6/6
5	NAG	A	602	1	-	0/6/23/26	0/1/1/1
7	GOL	A	540	-	-	3/4/4/4	-
7	GOL	A	543	-	-	4/4/4/4	-
7	GOL	A	544	-	-	3/4/4/4	-
7	GOL	A	539	-	-	2/4/4/4	-
6	PEG	A	537	-	-	1/4/4/4	-
7	GOL	A	538	-	-	2/4/4/4	-

All (23) bond length outliers are listed below:

Mol	Chain	Res	Type	Atoms	Z	Observed(Å)	Ideal(Å)
3	A	535	FAD	C2A-N3A	5.08	1.40	1.32
4	A	536	ZIP	C11-N10	-5.07	1.32	1.45
4	A	536	ZIP	C4-N3	-3.74	1.31	1.37

*Continued on next page...*



*Continued from previous page...*

Mol	Chain	Res	Type	Atoms	Z	Observed(Å)	Ideal(Å)
5	A	606	NAG	C1-C2	3.57	1.57	1.52
3	A	535	FAD	C4X-C10	3.39	1.54	1.44
3	A	535	FAD	C9A-C5X	3.31	1.46	1.41
4	A	536	ZIP	C4-N7	-3.26	1.29	1.34
3	A	535	FAD	O4B-C1B	2.79	1.45	1.41
3	A	535	FAD	C8M-C8	-2.68	1.45	1.51
5	A	602	NAG	C1-C2	2.68	1.56	1.52
4	A	536	ZIP	C2-N3	-2.62	1.27	1.32
4	A	536	ZIP	C2-N1	-2.57	1.29	1.33
5	A	603	NAG	C1-C2	2.55	1.56	1.52
3	A	535	FAD	C4X-N5	2.54	1.35	1.30
4	A	536	ZIP	C5-N9	-2.53	1.30	1.39
3	A	535	FAD	C8A-N7A	-2.49	1.30	1.34
3	A	535	FAD	C2B-C3B	2.47	1.60	1.53
5	A	606	NAG	C3-C2	2.30	1.57	1.52
3	A	535	FAD	C9A-N10	2.23	1.45	1.41
4	A	536	ZIP	C12-C13	2.18	1.38	1.32
3	A	535	FAD	C4'-C3'	2.07	1.57	1.53
3	A	535	FAD	P-O2P	-2.06	1.45	1.55
5	A	602	NAG	O5-C5	2.00	1.47	1.43

All (23) bond angle outliers are listed below:

Mol	Chain	Res	Type	Atoms	Z	Observed(°)	Ideal(°)
4	A	536	ZIP	C2-N1-C6	8.80	124.14	116.59
4	A	536	ZIP	N3-C2-N1	-5.01	120.85	128.68
3	A	535	FAD	C9-C8-C7	4.18	125.66	119.67
4	A	536	ZIP	C12-C11-N10	3.27	125.76	112.83
4	A	536	ZIP	C2-N3-C4	2.94	120.33	113.45
3	A	535	FAD	O4-C4-C4X	-2.92	118.85	126.60
3	A	535	FAD	C8M-C8-C9	-2.86	114.19	119.49
4	A	536	ZIP	C4-C5-N9	-2.85	106.43	109.40
5	A	602	NAG	O3-C3-C2	-2.79	103.69	109.47
3	A	535	FAD	C6-C7-C8	-2.68	115.83	119.67
3	A	535	FAD	O4-C4-N3	2.63	125.15	120.12
5	A	606	NAG	C4-C3-C2	2.56	114.77	111.02
3	A	535	FAD	C1'-C2'-C3'	-2.45	102.93	109.79
4	A	536	ZIP	C11-C12-C13	-2.45	122.38	127.14
3	A	535	FAD	C10-N1-C2	2.41	121.72	116.90
5	A	606	NAG	C1-C2-N2	2.36	114.53	110.49
3	A	535	FAD	C5X-C9A-N10	2.28	120.31	117.95
7	A	538	GOL	C3-C2-C1	2.15	120.08	111.70

*Continued on next page...*

*Continued from previous page...*

Mol	Chain	Res	Type	Atoms	Z	Observed(°)	Ideal(°)
3	A	535	FAD	P-O3P-PA	-2.11	125.60	132.83
5	A	603	NAG	C2-N2-C7	-2.10	119.91	122.90
4	A	536	ZIP	N10-C6-N1	2.09	121.96	118.54
7	A	541	GOL	C3-C2-C1	-2.08	103.61	111.70
3	A	535	FAD	C6-C5X-C9A	2.07	121.87	118.94

There are no chirality outliers.

All (27) torsion outliers are listed below:

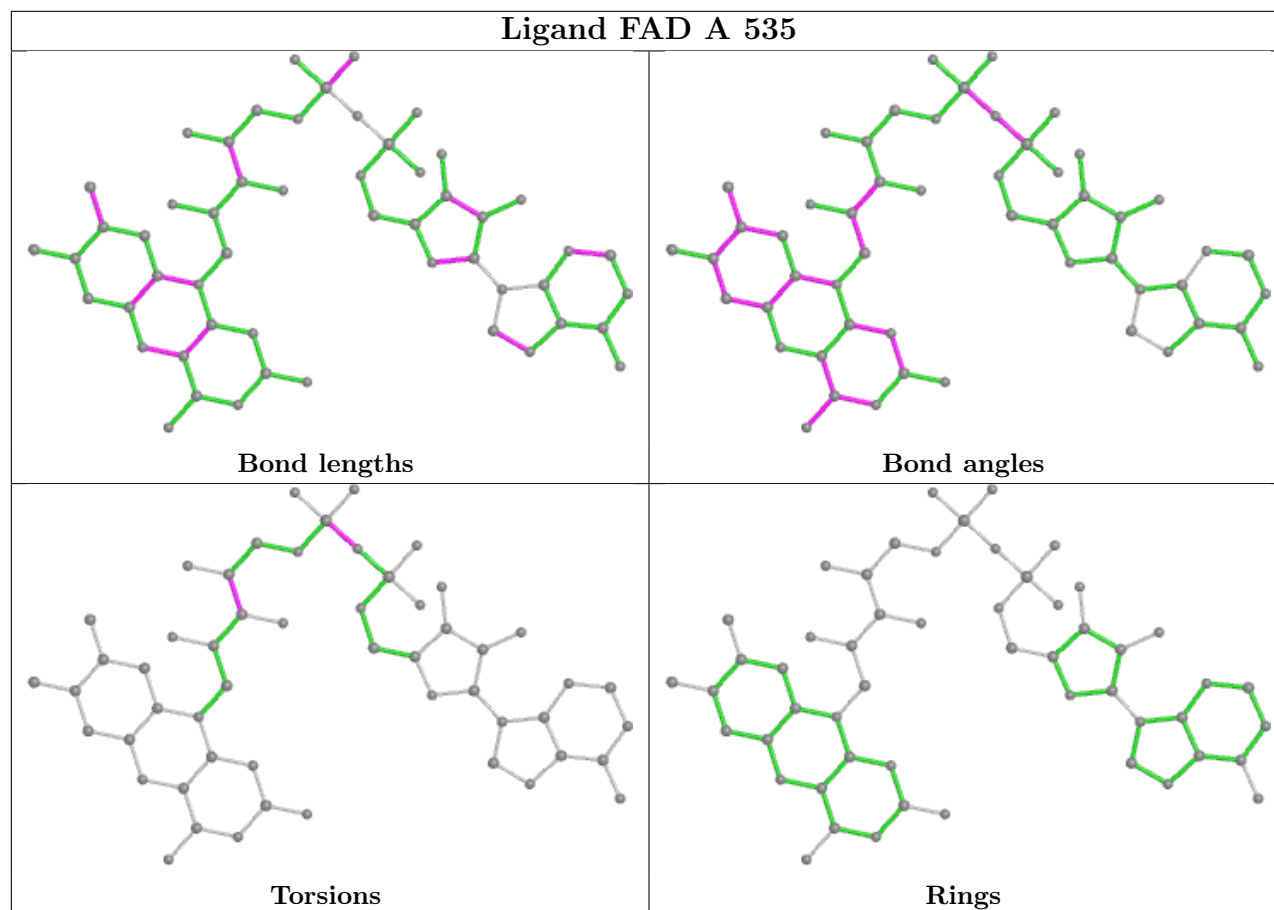
Mol	Chain	Res	Type	Atoms
4	A	536	ZIP	C5-C6-N10-C11
7	A	539	GOL	O1-C1-C2-C3
7	A	540	GOL	O1-C1-C2-C3
7	A	540	GOL	C1-C2-C3-O3
7	A	541	GOL	O1-C1-C2-O2
7	A	541	GOL	O1-C1-C2-C3
7	A	542	GOL	O1-C1-C2-O2
7	A	542	GOL	O1-C1-C2-C3
7	A	543	GOL	C1-C2-C3-O3
7	A	543	GOL	O2-C2-C3-O3
7	A	544	GOL	C1-C2-C3-O3
7	A	545	GOL	O1-C1-C2-O2
7	A	545	GOL	O1-C1-C2-C3
7	A	539	GOL	O1-C1-C2-O2
7	A	538	GOL	O1-C1-C2-C3
7	A	544	GOL	O1-C1-C2-C3
7	A	538	GOL	O1-C1-C2-O2
7	A	543	GOL	O1-C1-C2-O2
7	A	540	GOL	O2-C2-C3-O3
4	A	536	ZIP	N1-C6-N10-C11
7	A	544	GOL	O2-C2-C3-O3
3	A	535	FAD	C2'-C3'-C4'-C5'
7	A	543	GOL	O1-C1-C2-C3
4	A	536	ZIP	N10-C11-C12-C13
6	A	537	PEG	C1-C2-O2-C3
7	A	545	GOL	O2-C2-C3-O3
3	A	535	FAD	PA-O3P-P-O2P

There are no ring outliers.

8 monomers are involved in 16 short contacts:

Mol	Chain	Res	Type	Clashes	Symm-Clashes
7	A	541	GOL	1	0
7	A	545	GOL	1	0
4	A	536	ZIP	3	0
7	A	542	GOL	1	0
3	A	535	FAD	2	0
7	A	544	GOL	4	0
7	A	539	GOL	2	0
7	A	538	GOL	5	0

The following is a two-dimensional graphical depiction of Mogul quality analysis of bond lengths, bond angles, torsion angles, and ring geometry for all instances of the Ligand of Interest. In addition, ligands with molecular weight > 250 and outliers as shown on the validation Tables will also be included. For torsion angles, if less than 5% of the Mogul distribution of torsion angles is within 10 degrees of the torsion angle in question, then that torsion angle is considered an outlier. Any bond that is central to one or more torsion angles identified as an outlier by Mogul will be highlighted in the graph. For rings, the root-mean-square deviation (RMSD) between the ring in question and similar rings identified by Mogul is calculated over all ring torsion angles. If the average RMSD is greater than 60 degrees and the minimal RMSD between the ring in question and any Mogul-identified rings is also greater than 60 degrees, then that ring is considered an outlier. The outliers are highlighted in purple. The color gray indicates Mogul did not find sufficient equivalents in the CSD to analyse the geometry.



## 5.7 Other polymers [i](#)

There are no such residues in this entry.

## 5.8 Polymer linkage issues [i](#)

There are no chain breaks in this entry.

## 6 Fit of model and data

### 6.1 Protein, DNA and RNA chains

In the following table, the column labelled ‘#RSRZ > 2’ contains the number (and percentage) of RSRZ outliers, followed by percent RSRZ outliers for the chain as percentile scores relative to all X-ray entries and entries of similar resolution. The OWAB column contains the minimum, median, 95<sup>th</sup> percentile and maximum values of the occupancy-weighted average B-factor per residue. The column labelled ‘Q < 0.9’ lists the number of (and percentage) of residues with an average occupancy less than 0.9.

Mol	Chain	Analysed	<RSRZ>	#RSRZ>2	OWAB(Å <sup>2</sup> )	Q<0.9
1	A	498/516 (96%)	-0.03	23 (4%) <span style="border: 1px solid red; padding: 2px;">32</span> <span style="border: 1px solid red; padding: 2px;">31</span>	13, 26, 47, 68	2 (0%)

All (23) RSRZ outliers are listed below:

Mol	Chain	Res	Type	RSRZ
1	A	129	ALA	9.3
1	A	464	PRO	8.4
1	A	128	ALA	8.3
1	A	279	ALA	7.8
1	A	274	PRO	7.1
1	A	127	ALA	5.1
1	A	462	VAL	4.0
1	A	388	LEU	3.8
1	A	389	GLY	3.4
1	A	217	LEU	3.3
1	A	344	ALA	3.1
1	A	390	LEU	2.9
1	A	216	GLN	2.9
1	A	273	ARG	2.8
1	A	280	SER	2.7
1	A	387	LYS	2.7
1	A	92	PRO	2.6
1	A	130	PRO	2.6
1	A	342	ALA	2.6
1	A	343	ALA	2.6
1	A	386	ASN	2.2
1	A	179	LEU	2.1
1	A	137	ALA	2.1

## 6.2 Non-standard residues in protein, DNA, RNA chains [i](#)

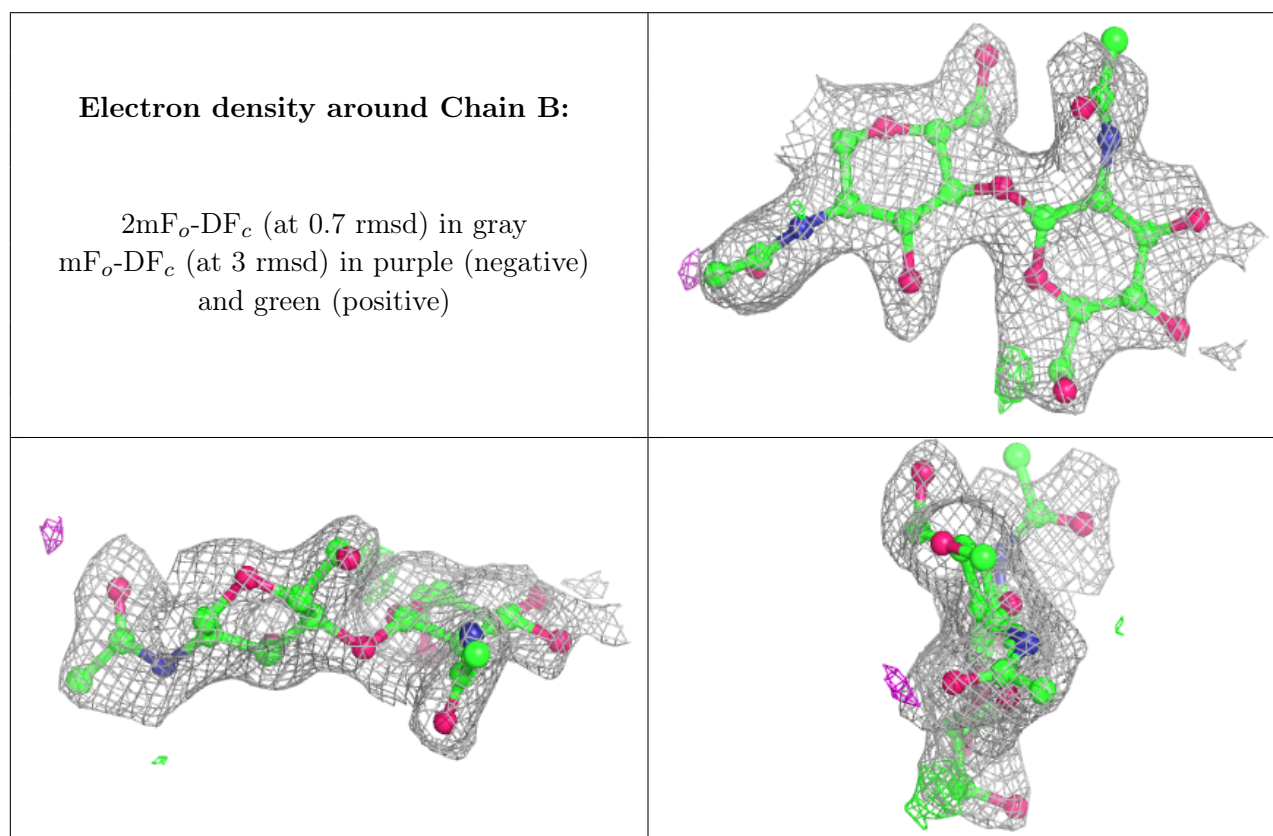
There are no non-standard protein/DNA/RNA residues in this entry.

## 6.3 Carbohydrates [i](#)

In the following table, the Atoms column lists the number of modelled atoms in the group and the number defined in the chemical component dictionary. The B-factors column lists the minimum, median, 95<sup>th</sup> percentile and maximum values of B factors of atoms in the group. The column labelled 'Q< 0.9' lists the number of atoms with occupancy less than 0.9.

Mol	Type	Chain	Res	Atoms	RSCC	RSR	B-factors(Å <sup>2</sup> )	Q<0.9
2	NAG	B	2	14/15	0.86	0.32	66,70,73,73	0
2	NAG	B	1	14/15	0.88	0.17	43,47,50,50	0

The following is a graphical depiction of the model fit to experimental electron density for oligosaccharide. Each fit is shown from different orientation to approximate a three-dimensional view.



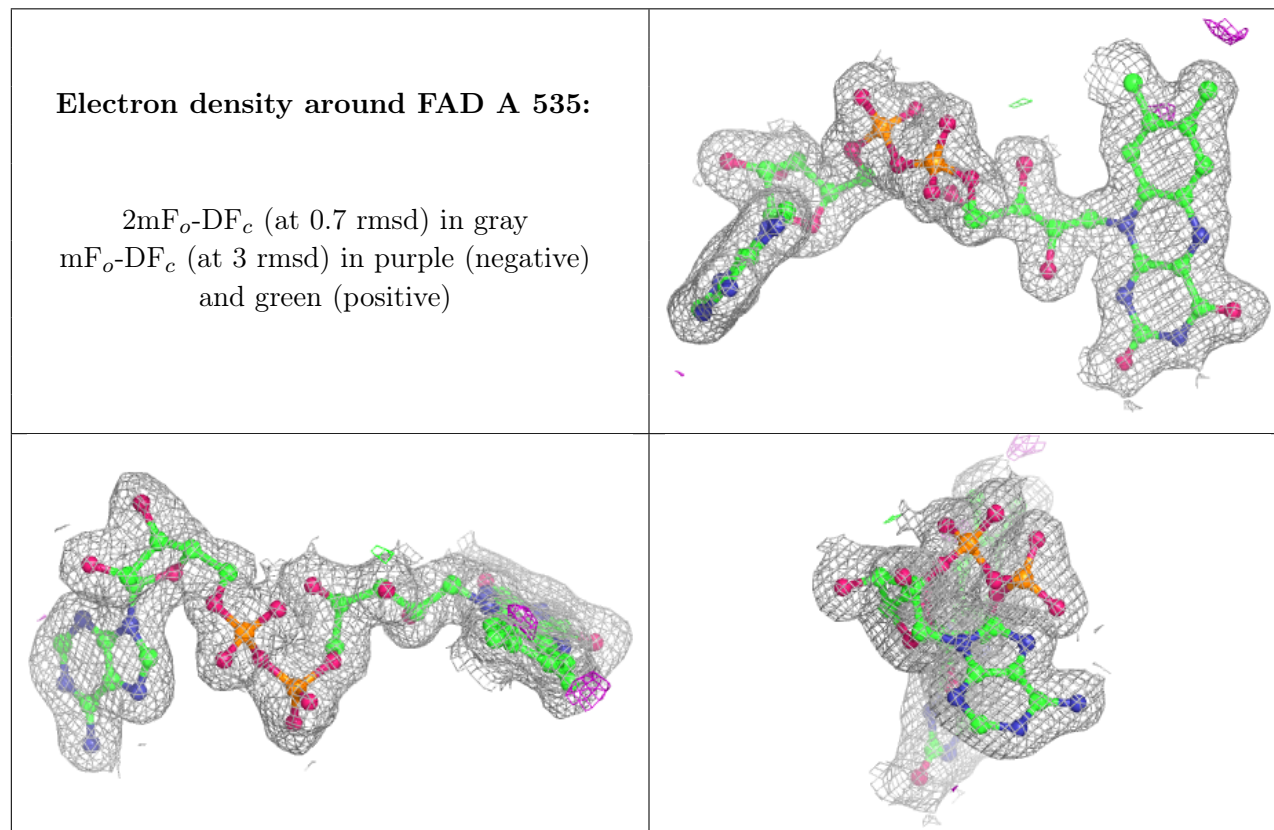
## 6.4 Ligands [i](#)

In the following table, the Atoms column lists the number of modelled atoms in the group and the number defined in the chemical component dictionary. The B-factors column lists the minimum,

median, 95<sup>th</sup> percentile and maximum values of B factors of atoms in the group. The column labelled 'Q<0.9' lists the number of atoms with occupancy less than 0.9.

Mol	Type	Chain	Res	Atoms	RSCC	RSR	B-factors(Å <sup>2</sup> )	Q<0.9
7	GOL	A	543	6/6	0.53	0.42	55,56,56,57	0
7	GOL	A	542	6/6	0.59	0.26	72,73,73,74	0
7	GOL	A	540	6/6	0.69	0.19	45,46,47,48	0
7	GOL	A	541	6/6	0.69	0.24	58,59,59,60	0
6	PEG	A	537	7/7	0.76	0.14	49,50,53,55	0
7	GOL	A	545	6/6	0.76	0.26	71,72,72,72	0
5	NAG	A	606	14/15	0.78	0.25	52,56,58,58	0
5	NAG	A	603	14/15	0.85	0.26	45,49,51,52	0
7	GOL	A	539	6/6	0.86	0.14	52,53,54,55	0
7	GOL	A	544	6/6	0.87	0.22	39,41,42,43	0
5	NAG	A	602	14/15	0.87	0.19	37,41,44,44	0
4	ZIP	A	536	15/15	0.90	0.13	27,29,30,31	0
7	GOL	A	538	6/6	0.92	0.19	18,25,25,26	0
3	FAD	A	535	53/53	0.98	0.13	15,17,20,20	0

The following is a graphical depiction of the model fit to experimental electron density of all instances of the Ligand of Interest. In addition, ligands with molecular weight > 250 and outliers as shown on the geometry validation Tables will also be included. Each fit is shown from different orientation to approximate a three-dimensional view.



## 6.5 Other polymers [i](#)

There are no such residues in this entry.