



## Full wwPDB EM Validation Report ⓘ

Dec 11, 2022 – 03:20 am GMT

PDB ID : 6RN3  
EMDB ID : EMD-4941  
Title : ClpB (DWB mutant) bound to casein in presence of ATPgammaS - state WT-2A  
Authors : Deville, C.; Saibil, H.R.  
Deposited on : 2019-05-07  
Resolution : 4.00 Å(reported)  
Based on initial model : 1CIU

This is a Full wwPDB EM Validation Report for a publicly released PDB entry.

We welcome your comments at [validation@mail.wwpdb.org](mailto:validation@mail.wwpdb.org)

A user guide is available at

<https://www.wwpdb.org/validation/2017/EMValidationReportHelp>

with specific help available everywhere you see the ⓘ symbol.

The types of validation reports are described at

<http://www.wwpdb.org/validation/2017/FAQs#types>.

---

The following versions of software and data (see [references ⓘ](#)) were used in the production of this report:

EMDB validation analysis : 0.0.1.dev43  
Mogul : 1.8.4, CSD as541be (2020)  
MolProbity : 4.02b-467  
buster-report : 1.1.7 (2018)  
Percentile statistics : 20191225.v01 (using entries in the PDB archive December 25th 2019)  
MapQ : 1.9.9  
Ideal geometry (proteins) : Engh & Huber (2001)  
Ideal geometry (DNA, RNA) : Parkinson et al. (1996)  
Validation Pipeline (wwPDB-VP) : 2.31.3

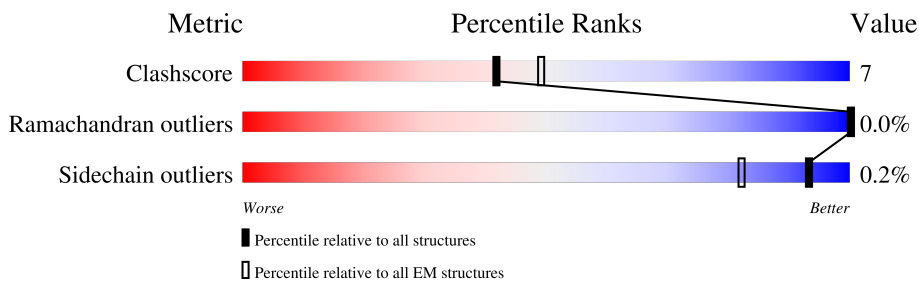
# 1 Overall quality at a glance

The following experimental techniques were used to determine the structure:

*ELECTRON MICROSCOPY*

The reported resolution of this entry is 4.00 Å.

Percentile scores (ranging between 0-100) for global validation metrics of the entry are shown in the following graphic. The table shows the number of entries on which the scores are based.



Metric	Whole archive (#Entries)	EM structures (#Entries)
Clashscore	158937	4297
Ramachandran outliers	154571	4023
Sidechain outliers	154315	3826

The table below summarises the geometric issues observed across the polymeric chains and their fit to the map. The red, orange, yellow and green segments of the bar indicate the fraction of residues that contain outliers for  $\geq 3$ , 2, 1 and 0 types of geometric quality criteria respectively. A grey segment represents the fraction of residues that are not modelled. The numeric value for each fraction is indicated below the corresponding segment, with a dot representing fractions  $\leq 5\%$ . The upper red bar (where present) indicates the fraction of residues that have poor fit to the EM map (all-atom inclusion  $< 40\%$ ). The numeric value is given above the bar.

Mol	Chain	Length	Quality of chain
1	A	858	
1	B	858	
1	C	858	
1	D	858	
1	E	858	
1	F	858	
2	S	24	

## 2 Entry composition

There are 4 unique types of molecules in this entry. The entry contains 32871 atoms, of which 0 are hydrogens and 0 are deuteriums.

In the tables below, the AltConf column contains the number of residues with at least one atom in alternate conformation and the Trace column contains the number of residues modelled with at most 2 atoms.

- Molecule 1 is a protein called Chaperone protein ClpB.

Mol	Chain	Residues	Atoms					AltConf	Trace
			Total	C	N	O	S		
1	A	684	Total	C	N	O	S	0	0
			5406	3386	976	1024	20		
1	B	689	Total	C	N	O	S	0	0
			5430	3400	981	1029	20		
1	C	689	Total	C	N	O	S	0	0
			5430	3400	981	1029	20		
1	D	684	Total	C	N	O	S	0	0
			5406	3386	976	1024	20		
1	E	684	Total	C	N	O	S	0	0
			5406	3386	976	1024	20		
1	F	675	Total	C	N	O	S	0	0
			5340	3345	964	1013	18		

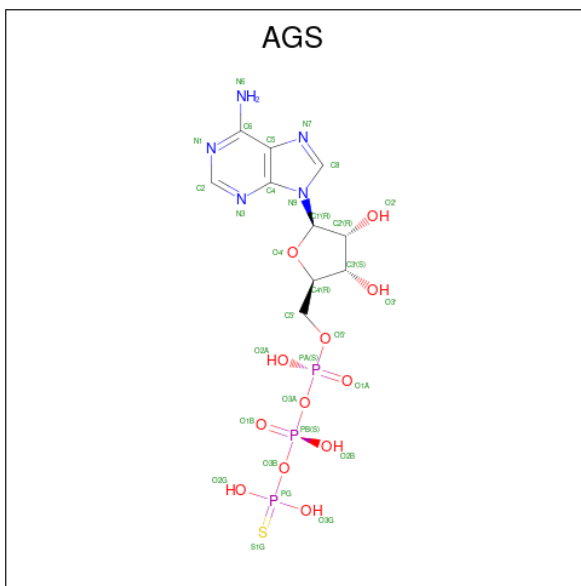
There are 18 discrepancies between the modelled and reference sequences:

Chain	Residue	Modelled	Actual	Comment	Reference
A	279	ALA	GLU	conflict	UNP V2RJ62
A	678	ALA	GLU	conflict	UNP V2RJ62
A	858	HIS	-	expression tag	UNP V2RJ62
B	279	ALA	GLU	conflict	UNP V2RJ62
B	678	ALA	GLU	conflict	UNP V2RJ62
B	858	HIS	-	expression tag	UNP V2RJ62
C	279	ALA	GLU	conflict	UNP V2RJ62
C	678	ALA	GLU	conflict	UNP V2RJ62
C	858	HIS	-	expression tag	UNP V2RJ62
D	279	ALA	GLU	conflict	UNP V2RJ62
D	678	ALA	GLU	conflict	UNP V2RJ62
D	858	HIS	-	expression tag	UNP V2RJ62
E	279	ALA	GLU	conflict	UNP V2RJ62
E	678	ALA	GLU	conflict	UNP V2RJ62
E	858	HIS	-	expression tag	UNP V2RJ62
F	279	ALA	GLU	conflict	UNP V2RJ62
F	678	ALA	GLU	conflict	UNP V2RJ62
F	858	HIS	-	expression tag	UNP V2RJ62

- Molecule 2 is a protein called casein.

Mol	Chain	Residues	Atoms				AltConf	Trace
			Total	C	N	O		
2	S	24	120	72	24	24	0	0

- Molecule 3 is PHOSPHOTHIOPHOSPHORIC ACID-ADENYLATE ESTER (three-letter code: AGS) (formula: C<sub>10</sub>H<sub>16</sub>N<sub>5</sub>O<sub>12</sub>P<sub>3</sub>S) (labeled as "Ligand of Interest" by depositor).



Mol	Chain	Residues	Atoms						AltConf
			Total	C	N	O	P	S	
3	A	1	31	10	5	12	3	1	0
3	B	1	62	20	10	24	6	2	0
3	B	1	62	20	10	24	6	2	0
3	C	1	62	20	10	24	6	2	0
3	C	1	62	20	10	24	6	2	0
3	D	1	62	20	10	24	6	2	0
3	D	1	62	20	10	24	6	2	0
3	E	1	62	20	10	24	6	2	0
3	E	1	62	20	10	24	6	2	0

- Molecule 4 is ADENOSINE-5'-DIPHOSPHATE (three-letter code: ADP) (formula:  $C_{10}H_{15}N_5O_{10}P_2$ ) (labeled as "Ligand of Interest" by depositor).

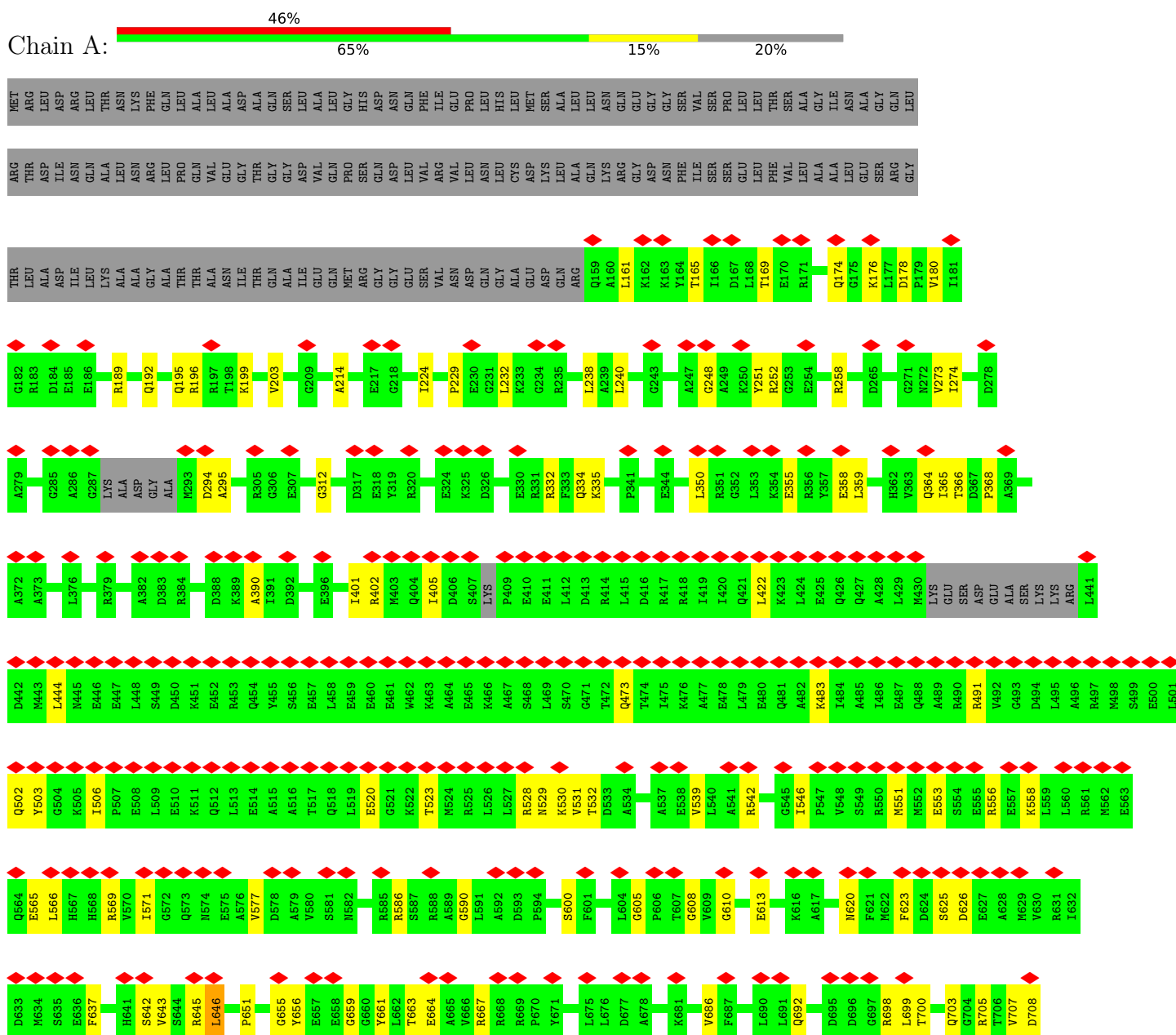


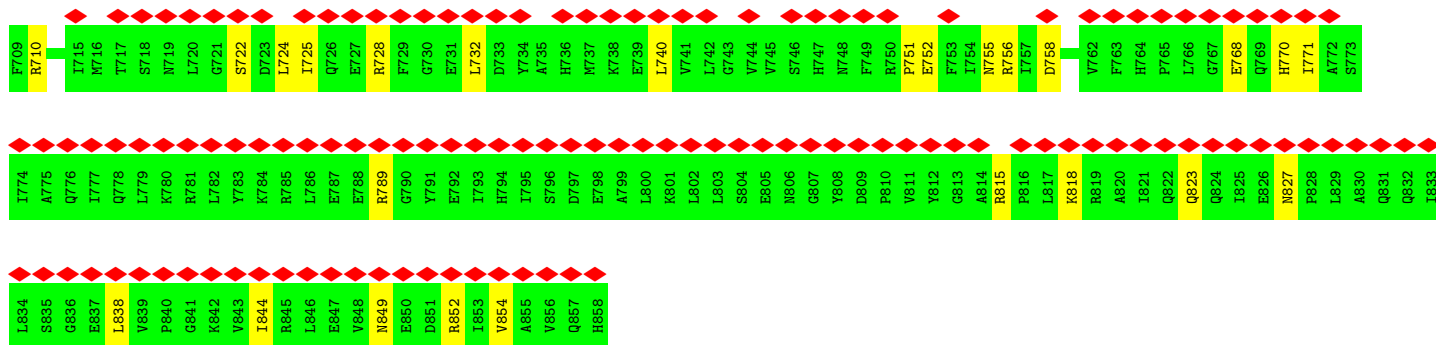
Mol	Chain	Residues	Atoms					AltConf
			Total	C	N	O	P	
4	A	1	27	10	5	10	2	0
4	F	1	27	10	5	10	2	0

### 3 Residue-property plots

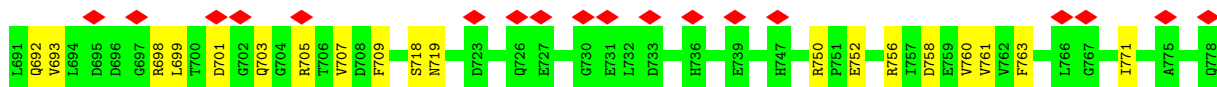
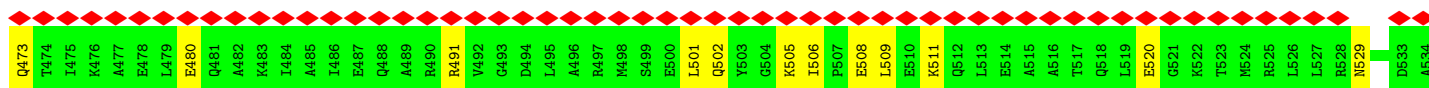
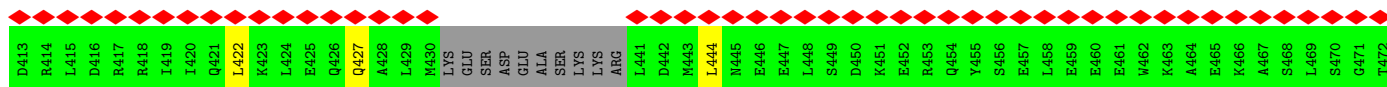
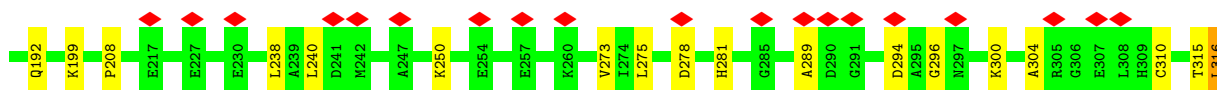
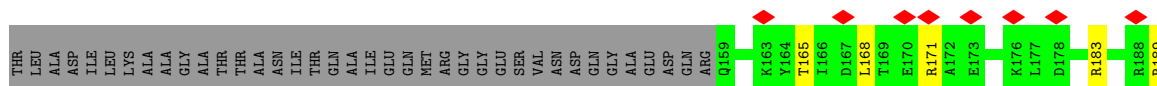
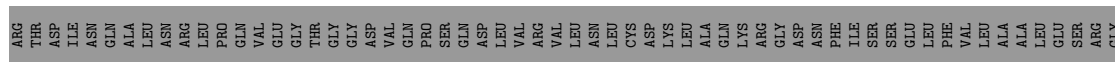
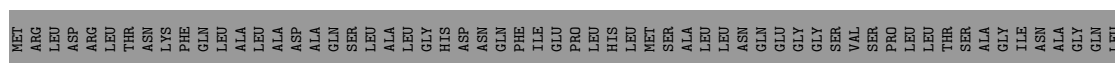
These plots are drawn for all protein, RNA, DNA and oligosaccharide chains in the entry. The first graphic for a chain summarises the proportions of the various outlier classes displayed in the second graphic. The second graphic shows the sequence view annotated by issues in geometry and atom inclusion in map density. Residues are color-coded according to the number of geometric quality criteria for which they contain at least one outlier: green = 0, yellow = 1, orange = 2 and red = 3 or more. A red diamond above a residue indicates a poor fit to the EM map for this residue (all-atom inclusion < 40%). Stretches of 2 or more consecutive residues without any outlier are shown as a green connector. Residues present in the sample, but not in the model, are shown in grey.

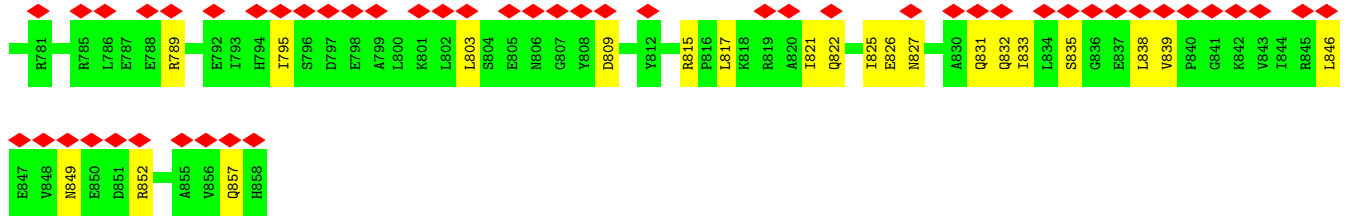
#### • Molecule 1: Chaperone protein ClpB



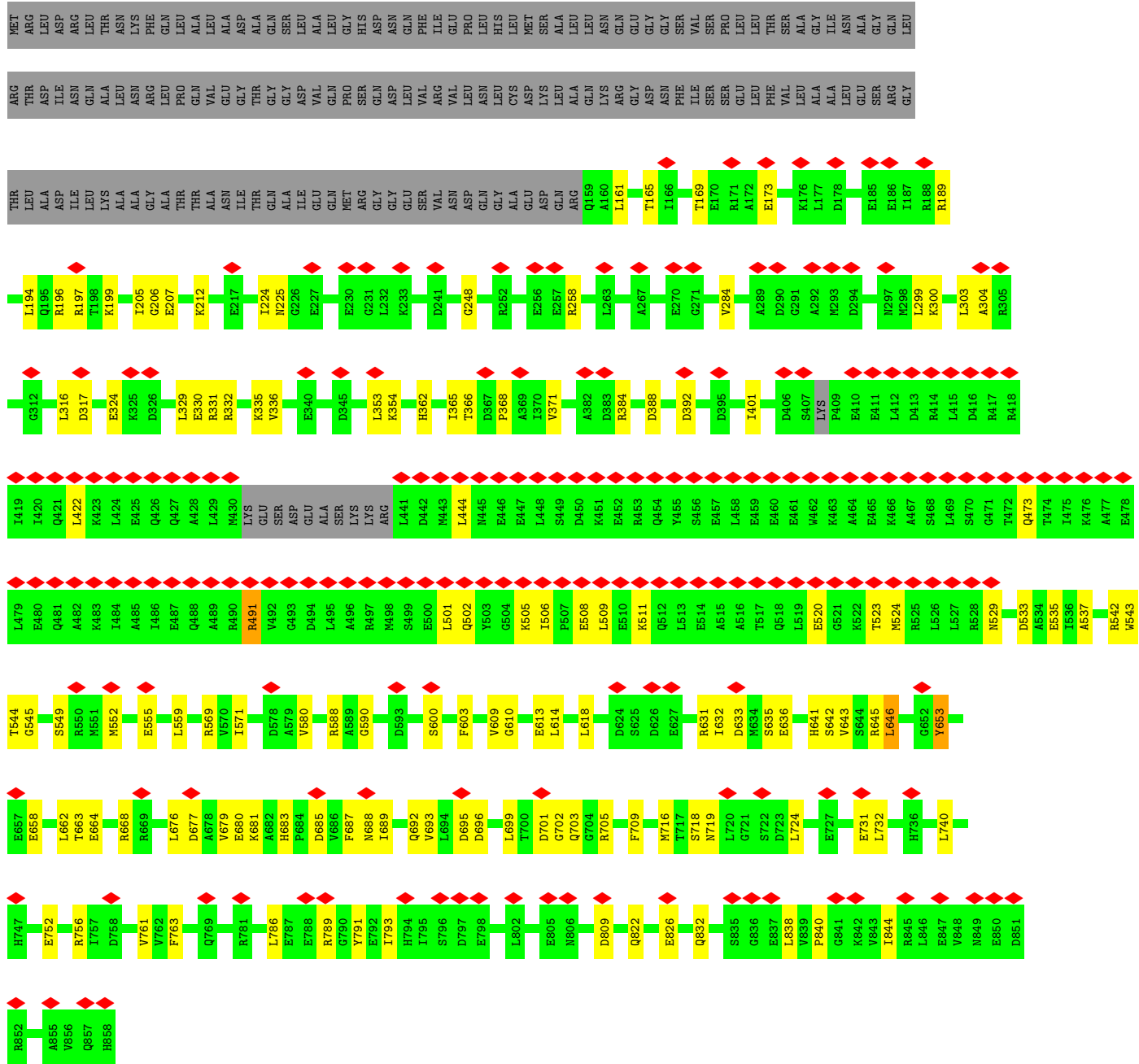


● Molecule 1: Chaperone protein ClpB





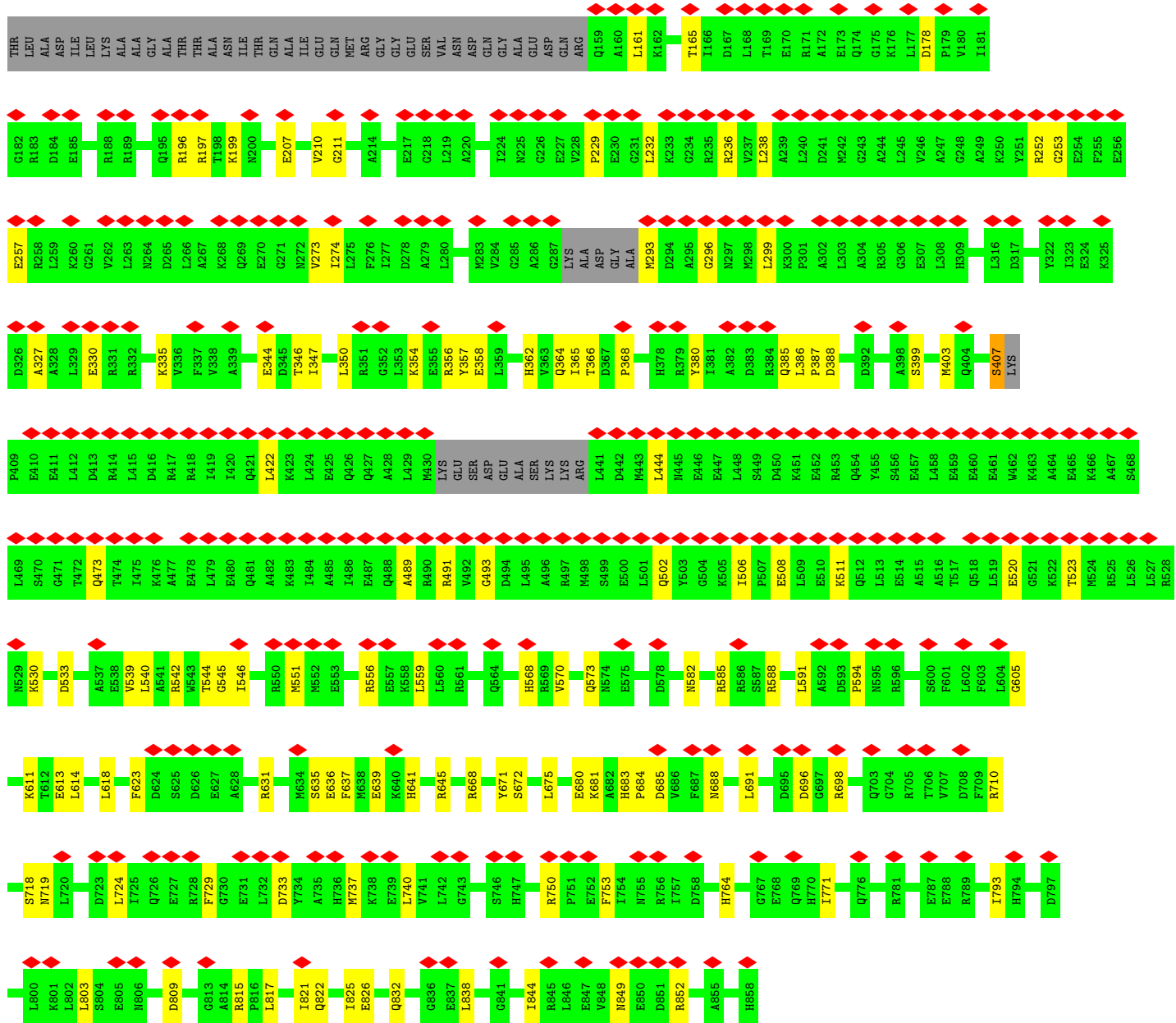
• Molecule 1: Chaperone protein ClpB



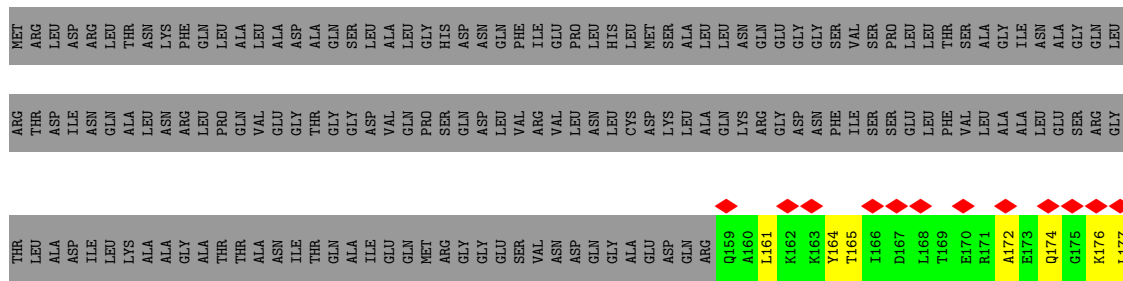
• Molecule 1: Chaperone protein ClpB

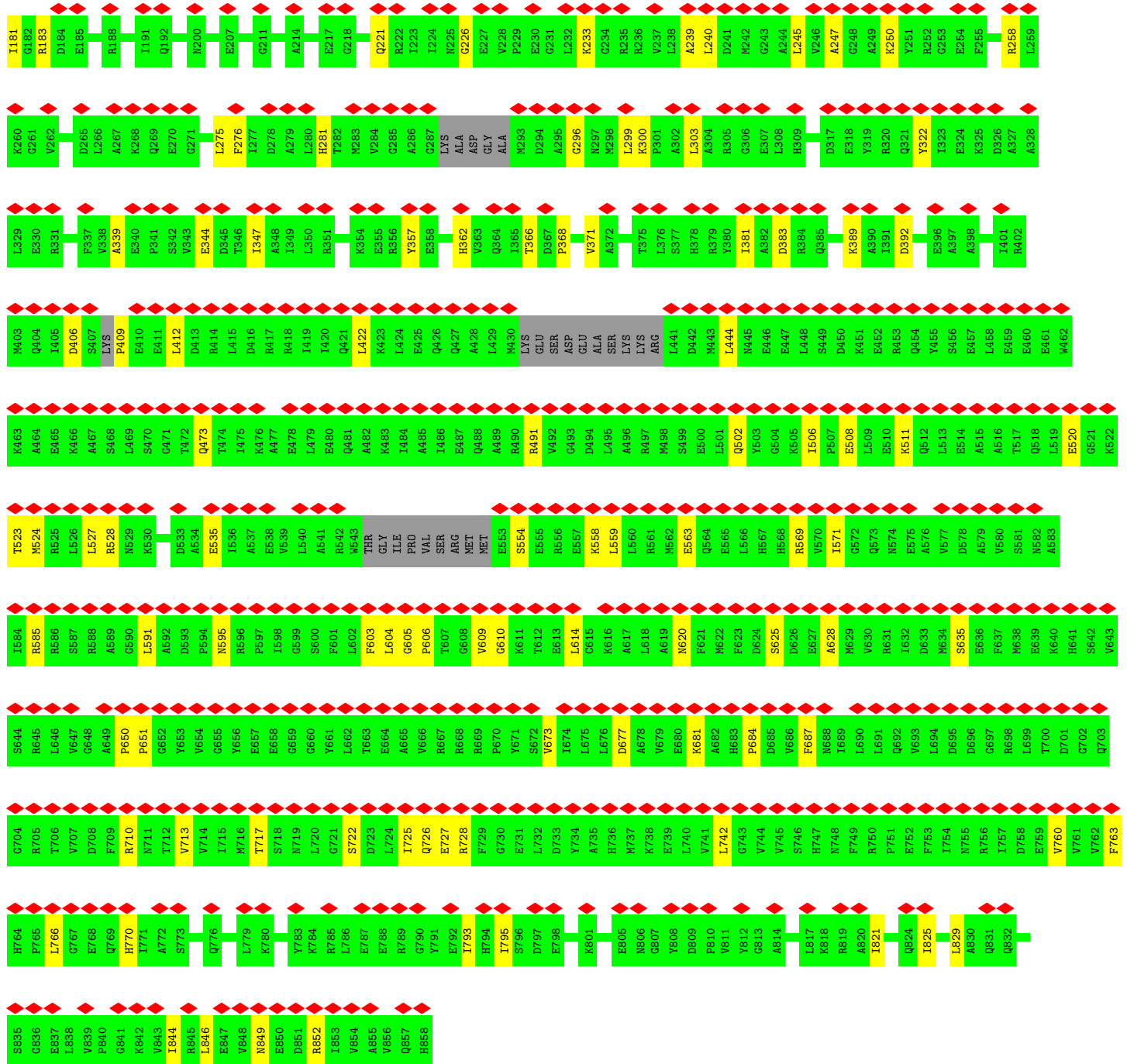




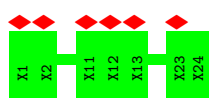


• Molecule 1: Chaperone protein ClpB





• Molecule 2: casein



## 4 Experimental information

Property	Value	Source
EM reconstruction method	SINGLE PARTICLE	Depositor
Imposed symmetry	POINT, C1	Depositor
Number of particles used	64000	Depositor
Resolution determination method	FSC 0.143 CUT-OFF	Depositor
CTF correction method	PHASE FLIPPING AND AMPLITUDE CORRECTION	Depositor
Microscope	FEI TITAN KRIOS	Depositor
Voltage (kV)	300	Depositor
Electron dose ( $e^-/\text{\AA}^2$ )	1.0	Depositor
Minimum defocus (nm)	1500	Depositor
Maximum defocus (nm)	3500	Depositor
Magnification	Not provided	
Image detector	GATAN K2 SUMMIT (4k x 4k)	Depositor
Maximum map value	0.224	Depositor
Minimum map value	-0.107	Depositor
Average map value	0.001	Depositor
Map value standard deviation	0.009	Depositor
Recommended contour level	0.05	Depositor
Map size (Å)	266.24, 266.24, 266.24	wwPDB
Map dimensions	256, 256, 256	wwPDB
Map angles (°)	90.0, 90.0, 90.0	wwPDB
Pixel spacing (Å)	1.04, 1.04, 1.04	Depositor

## 5 Model quality [i](#)

### 5.1 Standard geometry [i](#)

Bond lengths and bond angles in the following residue types are not validated in this section: ADP, AGS

The Z score for a bond length (or angle) is the number of standard deviations the observed value is removed from the expected value. A bond length (or angle) with  $|Z| > 5$  is considered an outlier worth inspection. RMSZ is the root-mean-square of all Z scores of the bond lengths (or angles).

Mol	Chain	Bond lengths		Bond angles	
		RMSZ	# Z  >5	RMSZ	# Z  >5
1	A	0.42	0/5477	0.58	1/7376 (0.0%)
1	B	0.54	0/5503	0.67	4/7416 (0.1%)
1	C	0.58	1/5503 (0.0%)	0.68	1/7416 (0.0%)
1	D	0.54	0/5477	0.67	1/7376 (0.0%)
1	E	0.45	0/5478	0.62	2/7380 (0.0%)
1	F	0.32	0/5409	0.54	0/7283
All	All	0.49	1/32847 (0.0%)	0.63	9/44247 (0.0%)

Chiral center outliers are detected by calculating the chiral volume of a chiral center and verifying if the center is modelled as a planar moiety or with the opposite hand. A planarity outlier is detected by checking planarity of atoms in a peptide group, atoms in a mainchain group or atoms of a sidechain that are expected to be planar.

Mol	Chain	#Chirality outliers	#Planarity outliers
1	C	0	2
1	E	0	1
1	F	0	1
All	All	0	4

All (1) bond length outliers are listed below:

Mol	Chain	Res	Type	Atoms	Z	Observed(Å)	Ideal(Å)
1	C	600	SER	CA-CB	-6.54	1.43	1.52

All (9) bond angle outliers are listed below:

Mol	Chain	Res	Type	Atoms	Z	Observed(°)	Ideal(°)
1	B	407	SER	C-N-CD	-7.92	103.18	120.60
1	E	407	SER	C-N-CD	-7.85	103.33	120.60
1	C	646	LEU	CA-CB-CG	7.02	131.44	115.30

*Continued on next page...*

Continued from previous page...

Mol	Chain	Res	Type	Atoms	Z	Observed(°)	Ideal(°)
1	A	646	LEU	CA-CB-CG	6.38	129.98	115.30
1	B	407	SER	C-N-CA	6.20	148.02	122.00
1	E	407	SER	C-N-CA	6.07	147.50	122.00
1	D	359	LEU	CA-CB-CG	5.34	127.59	115.30
1	B	353	LEU	CA-CB-CG	-5.30	103.12	115.30
1	B	316	LEU	CB-CG-CD2	-5.25	102.08	111.00

There are no chirality outliers.

All (4) planarity outliers are listed below:

Mol	Chain	Res	Type	Group
1	C	207	GLU	Peptide
1	C	653	TYR	Peptide
1	E	568	HIS	Peptide
1	F	245	LEU	Peptide

## 5.2 Too-close contacts

In the following table, the Non-H and H(model) columns list the number of non-hydrogen atoms and hydrogen atoms in the chain respectively. The H(added) column lists the number of hydrogen atoms added and optimized by MolProbity. The Clashes column lists the number of clashes within the asymmetric unit, whereas Symm-Clashes lists symmetry-related clashes.

Mol	Chain	Non-H	H(model)	H(added)	Clashes	Symm-Clashes
1	A	5406	0	5484	82	0
1	B	5430	0	5506	106	0
1	C	5430	0	5505	100	0
1	D	5406	0	5488	102	0
1	E	5406	0	5486	86	0
1	F	5340	0	5410	63	0
2	S	120	0	30	0	0
3	A	31	0	11	3	0
3	B	62	0	22	7	0
3	C	62	0	22	7	0
3	D	62	0	24	6	0
3	E	62	0	22	9	0
4	A	27	0	11	2	0
4	F	27	0	11	1	0
All	All	32871	0	33032	481	0

The all-atom clashscore is defined as the number of clashes found per 1000 atoms (including

hydrogen atoms). The all-atom clashscore for this structure is 7.

All (481) close contacts within the same asymmetric unit are listed below, sorted by their clash magnitude.

Atom-1	Atom-2	Interatomic distance (Å)	Clash overlap (Å)
1:A:751:PRO:O	1:A:755:ASN:HB2	1.85	0.77
1:D:692:GLN:HE22	1:E:636:GLU:HG3	1.54	0.73
1:E:366:THR:HG22	1:E:368:PRO:HD2	1.71	0.72
1:A:366:THR:HG22	1:A:368:PRO:HD2	1.72	0.70
1:B:632:ILE:HD11	1:B:662:LEU:HD13	1.74	0.69
1:C:366:THR:HG22	1:C:368:PRO:HD2	1.75	0.69
1:D:359:LEU:HD21	1:D:480:GLU:HG2	1.74	0.69
1:F:606:PRO:HB3	1:F:726:GLN:HE21	1.58	0.69
1:B:359:LEU:HD21	1:B:480:GLU:HG2	1.76	0.67
1:C:401:ILE:HD11	1:C:535:GLU:HG3	1.78	0.66
1:D:366:THR:HG22	1:D:368:PRO:HD2	1.76	0.66
1:F:366:THR:HG22	1:F:368:PRO:HD2	1.78	0.65
1:F:605:GLY:HA3	1:F:763:PHE:HB2	1.78	0.65
1:C:702:GLY:HA2	1:D:645:ARG:HE	1.62	0.64
1:B:692:GLN:NE2	1:C:635:SER:OG	2.30	0.63
1:B:756:ARG:NH2	3:C:1002:AGS:S1G	2.67	0.63
1:C:197:ARG:HE	1:D:357:TYR:HE1	1.46	0.63
1:B:582:ASN:OD1	1:B:585:ARG:NH2	2.33	0.62
1:F:563:GLU:OE2	1:F:585:ARG:NH1	2.33	0.62
1:A:332:ARG:NH2	3:B:1001:AGS:S1G	2.71	0.62
1:D:364:GLN:HB2	1:D:530:LYS:HG2	1.81	0.62
1:A:692:GLN:NE2	1:B:635:SER:OG	2.33	0.61
1:D:680:GLU:OE2	1:D:681:LYS:NZ	2.33	0.61
1:E:364:GLN:HB2	1:E:530:LYS:HG2	1.82	0.61
1:C:559:LEU:HD11	1:C:588:ARG:HG3	1.81	0.61
1:A:646:LEU:HA	1:A:661:TYR:HB3	1.83	0.61
1:A:651:PRO:HD2	1:B:645:ARG:HA	1.83	0.60
1:E:822:GLN:O	1:E:826:GLU:HB2	2.01	0.60
1:A:651:PRO:HB3	1:B:655:GLY:HA3	1.84	0.60
1:B:332:ARG:NH2	3:C:1001:AGS:S1G	2.74	0.60
1:B:354:LYS:HD3	1:B:370:ILE:HD11	1.83	0.60
1:C:832:GLN:HB3	1:C:838:LEU:HD13	1.84	0.60
1:F:821:ILE:HG23	1:F:825:ILE:HD12	1.82	0.60
1:F:571:ILE:HG13	1:F:770:HIS:HD2	1.66	0.60
1:C:664:GLU:OE2	1:C:705:ARG:NH2	2.35	0.60
1:D:602:LEU:HB3	1:D:760:VAL:HG22	1.83	0.60
1:A:180:VAL:HG21	1:A:214:ALA:HB1	1.82	0.60
1:D:664:GLU:OE2	1:D:705:ARG:NH2	2.35	0.59

*Continued on next page...*

*Continued from previous page...*

Atom-1	Atom-2	Interatomic distance (Å)	Clash overlap (Å)
1:A:551:MET:HB3	1:A:556:ARG:HB2	1.84	0.59
1:D:299:LEU:HB3	1:D:303:LEU:HD13	1.83	0.59
1:D:350:LEU:HD11	1:D:390:ALA:HB1	1.84	0.59
1:F:595:ASN:HA	1:F:710:ARG:HH11	1.68	0.59
1:F:849:ASN:HD22	1:F:852:ARG:HB2	1.66	0.59
1:C:676:LEU:HB2	1:C:716:MET:HG2	1.85	0.59
1:D:634:MET:HG3	1:D:679:VAL:HG23	1.83	0.59
1:C:632:ILE:HD11	1:C:662:LEU:HD13	1.84	0.59
1:D:613:GLU:HG3	3:D:1002:AGS:H2'	1.84	0.59
3:E:1002:AGS:O2A	3:E:1002:AGS:O1B	2.20	0.59
1:D:331:ARG:NH1	3:E:1001:AGS:S1G	2.73	0.58
1:C:590:GLY:HA3	1:D:789:ARG:HH21	1.68	0.58
1:D:174:GLN:OE1	1:D:176:LYS:NZ	2.35	0.58
1:E:637:PHE:HE1	1:E:645:ARG:HD2	1.68	0.58
1:F:172:ALA:HB2	1:F:177:LEU:HD12	1.85	0.58
1:C:225:ASN:OD1	1:C:491:ARG:NH1	2.37	0.58
1:A:252:ARG:HD3	1:B:289:ALA:HB2	1.84	0.58
1:B:664:GLU:OE2	1:B:705:ARG:NH2	2.35	0.58
1:B:701:ASP:O	1:C:645:ARG:NH2	2.35	0.58
1:D:528:ARG:NH2	1:D:535:GLU:OE2	2.34	0.58
1:A:608:GLY:N	4:A:1002:ADP:O1B	2.37	0.58
1:F:727:GLU:HG2	1:F:728:ARG:HG3	1.84	0.58
1:B:281:HIS:HB2	1:B:322:TYR:HD2	1.69	0.57
1:C:752:GLU:HG2	1:D:719:ASN:HD21	1.69	0.57
1:D:559:LEU:HD11	1:D:588:ARG:HG3	1.85	0.57
1:E:815:ARG:NH1	3:E:1002:AGS:S1G	2.76	0.57
1:C:756:ARG:NH2	3:D:1002:AGS:O2G	2.36	0.57
1:D:569:ARG:NH1	1:D:626:ASP:OD1	2.37	0.57
1:E:559:LEU:HD11	1:E:588:ARG:HG3	1.86	0.57
1:A:698:ARG:NH2	1:A:700:THR:OG1	2.38	0.57
1:A:195:GLN:HE22	1:A:229:PRO:HB2	1.68	0.57
1:A:520:GLU:OE1	1:A:529:ASN:ND2	2.38	0.57
1:C:642:SER:OG	1:C:643:VAL:N	2.37	0.57
1:F:795:ILE:HA	1:F:846:LEU:HB2	1.87	0.57
1:A:192:GLN:OE1	1:B:542:ARG:NH2	2.37	0.57
3:C:1002:AGS:O1B	3:C:1002:AGS:O2G	2.23	0.57
1:A:600:SER:HG	1:A:758:ASP:H	1.49	0.57
1:B:795:ILE:HG13	1:B:846:LEU:HB2	1.85	0.57
3:B:1001:AGS:O1B	3:B:1001:AGS:O2G	2.20	0.57
1:B:331:ARG:NH1	3:C:1001:AGS:S1G	2.78	0.56
1:C:569:ARG:NH2	1:C:613:GLU:OE1	2.39	0.56

*Continued on next page...*



*Continued from previous page...*

Atom-1	Atom-2	Interatomic distance (Å)	Clash overlap (Å)
1:E:594:PRO:O	1:E:710:ARG:NH1	2.39	0.56
1:F:174:GLN:OE1	1:F:176:LYS:NZ	2.38	0.56
1:B:683:HIS:ND1	1:B:685:ASP:OD1	2.38	0.56
1:B:692:GLN:HE22	1:C:636:GLU:HG3	1.69	0.56
1:C:679:VAL:HG22	1:C:687:PHE:HE1	1.71	0.56
1:D:708:ASP:OD1	1:D:710:ARG:NE	2.33	0.56
1:F:183:ARG:NH2	1:F:339:ALA:O	2.37	0.56
1:B:422:LEU:HD22	1:B:444:LEU:HD11	1.88	0.55
1:B:821:ILE:HG23	1:B:825:ILE:HD12	1.87	0.55
1:C:317:ASP:OD1	1:D:668:ARG:NH2	2.39	0.55
1:D:822:GLN:O	1:D:826:GLU:HB2	2.07	0.55
1:E:293:MET:HB3	1:F:247:ALA:H	1.71	0.55
1:C:248:GLY:HA3	1:C:258:ARG:HH22	1.72	0.55
1:C:199:LYS:NZ	1:D:388:ASP:OD2	2.37	0.55
1:A:756:ARG:NH2	3:B:1002:AGS:S1G	2.80	0.55
1:C:299:LEU:O	1:C:303:LEU:HB2	2.07	0.55
1:E:335:LYS:NZ	1:F:383:ASP:OD2	2.37	0.55
1:B:316:LEU:HD21	1:C:668:ARG:HD2	1.90	0.54
1:A:637:PHE:HD1	1:A:642:SER:HB3	1.71	0.54
1:B:650:PRO:HG3	1:C:641:HIS:HB3	1.87	0.54
1:D:544:THR:O	1:D:669:ARG:NH1	2.40	0.54
1:D:684:PRO:HA	1:D:687:PHE:HD2	1.71	0.54
1:A:752:GLU:HG2	1:B:607:THR:HG21	1.89	0.54
1:D:226:GLY:O	1:D:233:LYS:NZ	2.39	0.54
1:C:544:THR:OG1	1:C:545:GLY:N	2.40	0.54
1:C:680:GLU:OE2	1:C:681:LYS:NZ	2.39	0.54
1:B:596:ARG:NH2	1:B:756:ARG:O	2.40	0.54
1:C:533:ASP:OD1	1:C:533:ASP:N	2.39	0.54
1:C:822:GLN:O	1:C:826:GLU:HB2	2.08	0.54
3:B:1002:AGS:O2G	3:B:1002:AGS:O1B	2.24	0.54
1:E:236:ARG:HB2	1:E:273:VAL:HG22	1.90	0.54
1:F:181:ILE:H	4:F:1001:ADP:HN62	1.55	0.54
1:D:738:LYS:NZ	1:D:759:GLU:OE2	2.41	0.54
1:E:165:THR:HG21	1:E:238:LEU:HD23	1.88	0.54
3:E:1001:AGS:O2G	3:E:1001:AGS:O1B	2.25	0.54
1:A:645:ARG:HH21	1:F:650:PRO:HA	1.73	0.54
1:E:573:GLN:HE22	1:E:764:HIS:H	1.56	0.54
1:E:582:ASN:OD1	1:E:585:ARG:NH2	2.40	0.53
1:B:600:SER:OG	1:B:758:ASP:N	2.41	0.53
1:E:611:LYS:NZ	1:E:718:SER:O	2.34	0.53
1:A:174:GLN:OE1	1:A:176:LYS:NZ	2.42	0.53

*Continued on next page...*

*Continued from previous page...*

Atom-1	Atom-2	Interatomic distance (Å)	Clash overlap (Å)
1:F:502:GLN:HA	1:F:506:ILE:HD13	1.91	0.53
1:D:738:LYS:O	1:D:742:LEU:HB2	2.09	0.53
1:B:520:GLU:OE1	1:B:529:ASN:ND2	2.40	0.53
1:A:728:ARG:HB3	1:A:732:LEU:HD12	1.90	0.53
1:B:698:ARG:NH1	1:C:633:ASP:OD2	2.42	0.53
1:D:502:GLN:HA	1:D:506:ILE:HD13	1.90	0.53
1:B:189:ARG:HH22	1:C:543:TRP:HA	1.73	0.53
1:C:679:VAL:HG12	1:C:718:SER:HB2	1.91	0.53
1:B:294:ASP:N	1:B:294:ASP:OD1	2.42	0.52
1:B:350:LEU:HD11	1:B:390:ALA:HB1	1.90	0.52
1:C:248:GLY:H	1:C:258:ARG:HH12	1.55	0.52
1:B:703:GLN:OE1	1:B:705:ARG:NH1	2.42	0.52
3:C:1001:AGS:O2G	3:C:1001:AGS:O1B	2.22	0.52
3:E:1001:AGS:O1B	3:E:1001:AGS:O2A	2.26	0.52
1:A:334:GLN:OE1	1:B:384:ARG:NH1	2.33	0.52
1:B:688:ASN:HB3	1:C:635:SER:HB2	1.91	0.52
1:D:232:LEU:HD22	1:D:274:ILE:HD11	1.91	0.52
1:D:167:ASP:OD1	1:D:169:THR:N	2.40	0.52
1:E:631:ARG:HG3	1:E:675:LEU:HD23	1.91	0.52
1:B:351:ARG:NH2	1:B:367:ASP:OD1	2.42	0.52
1:F:603:PHE:HB2	1:F:717:THR:HG22	1.92	0.52
1:C:169:THR:HB	1:C:224:ILE:HD11	1.92	0.52
1:E:551:MET:HB3	1:E:556:ARG:HD3	1.93	0.52
1:A:528:ARG:NH2	1:A:532:THR:OG1	2.43	0.51
1:C:663:THR:HG21	1:C:701:ASP:HB3	1.90	0.51
1:F:528:ARG:NH2	1:F:535:GLU:OE2	2.43	0.51
1:B:501:LEU:O	1:B:505:LYS:HB2	2.11	0.51
1:A:169:THR:HB	1:A:224:ILE:HD11	1.92	0.51
1:A:692:GLN:HE22	1:B:636:GLU:HG3	1.74	0.51
3:D:1002:AGS:O2A	3:D:1002:AGS:O2B	2.29	0.51
1:E:544:THR:OG1	1:E:545:GLY:N	2.44	0.51
1:F:381:ILE:O	1:F:389:LYS:NZ	2.43	0.51
1:D:401:ILE:HD11	1:D:535:GLU:HG3	1.92	0.51
1:D:566:LEU:HD12	1:D:577:VAL:HG13	1.93	0.51
1:E:793:ILE:HG12	1:E:844:ILE:HB	1.93	0.51
1:A:248:GLY:HA3	1:A:258:ARG:HH22	1.75	0.51
3:B:1001:AGS:O2B	3:B:1001:AGS:O2A	2.29	0.51
1:C:580:VAL:HG11	1:C:618:LEU:HD11	1.91	0.51
3:B:1002:AGS:O2A	3:B:1002:AGS:O2B	2.28	0.51
1:C:161:LEU:O	1:C:165:THR:OG1	2.29	0.51
1:D:520:GLU:HA	1:D:523:THR:HG22	1.93	0.51

*Continued on next page...*

*Continued from previous page...*

Atom-1	Atom-2	Interatomic distance (Å)	Clash overlap (Å)
1:E:346:THR:HG21	1:E:386:LEU:HD22	1.92	0.51
1:A:196:ARG:NH2	1:B:392:ASP:OD1	2.43	0.50
1:A:752:GLU:OE2	1:B:719:ASN:ND2	2.44	0.50
1:A:838:LEU:HD23	1:A:844:ILE:HD13	1.93	0.50
1:C:331:ARG:NH2	1:D:388:ASP:OD1	2.41	0.50
1:C:693:VAL:HG13	1:C:709:PHE:HD2	1.75	0.50
1:D:316:LEU:HD21	1:E:668:ARG:HG2	1.94	0.50
1:D:354:LYS:HG3	1:D:365:ILE:HB	1.93	0.50
1:D:688:ASN:HB3	1:E:635:SER:HB2	1.93	0.50
1:A:199:LYS:NZ	1:B:388:ASP:OD2	2.35	0.50
1:C:206:GLY:O	1:C:212:LYS:NZ	2.44	0.50
1:C:703:GLN:OE1	1:C:705:ARG:NH1	2.38	0.50
1:E:358:GLU:O	1:E:473:GLN:NE2	2.44	0.50
1:F:344:GLU:HA	1:F:347:ILE:HD12	1.92	0.50
1:E:161:LEU:O	1:E:165:THR:OG1	2.27	0.50
1:F:226:GLY:O	1:F:233:LYS:NZ	2.45	0.50
3:C:1002:AGS:O2B	3:C:1002:AGS:O2A	2.27	0.50
1:D:640:LYS:NZ	1:E:639:GLU:OE2	2.35	0.50
1:F:296:GLY:O	1:F:300:LYS:N	2.40	0.50
1:A:656:TYR:OH	1:B:658:GLU:OE1	2.28	0.50
1:B:693:VAL:HG13	1:B:709:PHE:HD2	1.77	0.50
1:D:197:ARG:HE	1:E:357:TYR:HE1	1.60	0.50
1:F:239:ALA:HA	1:F:276:PHE:HB3	1.94	0.50
1:E:199:LYS:NZ	1:F:392:ASP:OD2	2.43	0.50
1:D:809:ASP:OD1	1:D:809:ASP:N	2.44	0.49
1:E:422:LEU:HD22	1:E:444:LEU:HD11	1.94	0.49
1:F:606:PRO:HG2	1:F:609:VAL:HG11	1.93	0.49
1:A:502:GLN:HA	1:A:506:ILE:HD13	1.93	0.49
1:D:362:HIS:CD2	1:D:473:GLN:HG2	2.47	0.49
1:D:650:PRO:HG3	1:E:641:HIS:CD2	2.47	0.49
1:D:229:PRO:HG2	1:E:403:MET:HG2	1.93	0.49
3:D:1001:AGS:O1B	3:D:1001:AGS:O2G	2.28	0.49
1:F:409:PRO:HD2	1:F:412:LEU:HD22	1.93	0.49
1:F:722:SER:HA	1:F:725:ILE:HD12	1.94	0.49
1:F:766:LEU:HB2	1:F:770:HIS:HB2	1.94	0.49
1:B:540:LEU:HD23	1:B:548:VAL:HG11	1.94	0.49
1:D:368:PRO:HA	1:D:371:VAL:HG12	1.93	0.49
1:B:199:LYS:NZ	1:C:388:ASP:OD2	2.33	0.49
1:E:197:ARG:HE	1:F:357:TYR:HE1	1.59	0.49
1:A:590:GLY:HA3	1:B:789:ARG:HH21	1.77	0.49
1:C:384:ARG:NH1	1:C:392:ASP:OD2	2.45	0.49

*Continued on next page...*

*Continued from previous page...*

Atom-1	Atom-2	Interatomic distance (Å)	Clash overlap (Å)
1:E:591:LEU:HD21	1:F:829:LEU:HD23	1.94	0.49
1:F:161:LEU:O	1:F:165:THR:OG1	2.28	0.49
1:A:708:ASP:OD2	1:A:710:ARG:NH2	2.44	0.49
1:C:809:ASP:OD1	1:C:809:ASP:N	2.46	0.49
1:E:613:GLU:HG3	3:E:1002:AGS:H2'	1.94	0.49
3:A:1001:AGS:O2G	3:A:1001:AGS:O1B	2.31	0.49
1:B:656:TYR:OH	1:C:658:GLU:OE1	2.30	0.49
1:A:520:GLU:HA	1:A:523:THR:HG22	1.95	0.48
1:D:361:HIS:NE2	1:D:395:ASP:OD1	2.45	0.48
1:F:554:SER:O	1:F:558:LYS:HB2	2.13	0.48
1:F:240:LEU:HB2	1:F:275:LEU:HD11	1.95	0.48
1:A:422:LEU:HD22	1:A:444:LEU:HD11	1.95	0.48
1:A:610:GLY:HA2	1:A:613:GLU:HB2	1.94	0.48
1:B:361:HIS:NE2	1:B:395:ASP:OD1	2.46	0.48
1:B:822:GLN:O	1:B:826:GLU:HB2	2.13	0.48
1:D:281:HIS:HB2	1:D:322:TYR:HD2	1.78	0.48
1:C:196:ARG:NH2	1:D:392:ASP:OD1	2.46	0.48
1:C:610:GLY:O	1:C:614:LEU:N	2.45	0.48
1:D:651:PRO:HD2	1:E:645:ARG:HA	1.95	0.48
1:D:676:LEU:HB2	1:D:716:MET:HG2	1.94	0.48
1:A:724:LEU:HD21	1:A:740:LEU:HG	1.93	0.48
1:A:823:GLN:HA	1:A:827:ASN:HD22	1.78	0.48
1:D:724:LEU:HD21	1:D:740:LEU:HG	1.96	0.48
3:D:1001:AGS:O2B	3:D:1001:AGS:O2A	2.31	0.48
1:E:680:GLU:OE2	1:E:681:LYS:NZ	2.46	0.48
1:B:752:GLU:HG2	1:C:719:ASN:HD21	1.78	0.48
1:F:281:HIS:HB2	1:F:322:TYR:HD2	1.79	0.48
1:E:229:PRO:HB3	1:F:406:ASP:HB3	1.95	0.48
1:E:350:LEU:O	1:E:354:LYS:N	2.41	0.48
1:A:364:GLN:HB2	1:A:530:LYS:HG2	1.95	0.48
1:B:333:PHE:O	1:C:384:ARG:NH2	2.46	0.48
1:D:192:GLN:HE22	1:E:542:ARG:HH22	1.62	0.48
1:F:299:LEU:HB3	1:F:303:LEU:HD13	1.95	0.48
1:A:656:TYR:HE1	1:A:703:GLN:HA	1.79	0.47
1:B:771:ILE:HG23	1:B:817:LEU:HD22	1.96	0.47
1:F:520:GLU:HA	1:F:523:THR:HG22	1.95	0.47
1:A:553:GLU:HA	1:A:556:ARG:HB3	1.96	0.47
1:D:718:SER:OG	1:D:719:ASN:N	2.47	0.47
1:E:809:ASP:N	1:E:809:ASP:OD1	2.45	0.47
1:F:554:SER:O	1:F:558:LYS:CB	2.62	0.47
1:E:718:SER:OG	1:E:719:ASN:N	2.48	0.47

*Continued on next page...*

*Continued from previous page...*

Atom-1	Atom-2	Interatomic distance (Å)	Clash overlap (Å)
3:A:1001:AGS:O2B	3:A:1001:AGS:O1A	2.28	0.47
1:B:502:GLN:HA	1:B:506:ILE:HD13	1.97	0.47
1:B:563:GLU:OE2	1:B:585:ARG:NH1	2.47	0.47
1:B:690:LEU:HA	1:B:693:VAL:HB	1.97	0.47
1:C:508:GLU:HG3	1:C:509:LEU:HD12	1.96	0.47
1:D:793:ILE:HG12	1:D:844:ILE:HB	1.96	0.47
1:B:300:LYS:O	1:B:332:ARG:NH1	2.48	0.47
1:C:189:ARG:HH11	1:C:336:VAL:HG22	1.80	0.47
1:C:199:LYS:NZ	1:D:392:ASP:OD2	2.43	0.47
1:C:692:GLN:HE22	1:D:636:GLU:HG3	1.78	0.47
1:C:695:ASP:OD1	1:D:815:ARG:NH2	2.48	0.47
1:D:591:LEU:HD23	1:E:826:GLU:HG2	1.97	0.47
1:E:296:GLY:HA2	1:E:299:LEU:HD13	1.96	0.47
1:E:502:GLN:HA	1:E:506:ILE:HD13	1.97	0.47
1:B:590:GLY:HA3	1:C:789:ARG:HH21	1.80	0.47
1:B:607:THR:HG22	1:B:719:ASN:HD22	1.80	0.47
1:B:667:ARG:CZ	1:B:668:ARG:HH12	2.28	0.47
1:F:164:TYR:OH	1:F:258:ARG:NH1	2.48	0.47
1:A:189:ARG:NH1	1:A:335:LYS:O	2.48	0.47
1:A:251:TYR:HD2	1:B:250:LYS:HD2	1.80	0.47
1:A:768:GLU:HA	1:A:771:ILE:HD12	1.97	0.47
1:D:191:ILE:HG23	1:D:232:LEU:HD12	1.96	0.47
1:E:803:LEU:HD11	1:E:825:ILE:HD11	1.96	0.47
1:B:680:GLU:N	1:B:680:GLU:OE1	2.48	0.46
1:C:537:ALA:HB1	1:C:549:SER:HA	1.96	0.46
1:E:546:ILE:HG13	1:E:671:TYR:HB2	1.96	0.46
1:E:696:ASP:HB3	1:E:698:ARG:HG2	1.97	0.46
1:E:771:ILE:HG23	1:E:817:LEU:HD22	1.97	0.46
1:E:685:ASP:N	1:E:685:ASP:OD1	2.47	0.46
1:E:832:GLN:HB3	1:E:838:LEU:HD13	1.96	0.46
3:C:1001:AGS:O2A	3:C:1001:AGS:O2B	2.32	0.46
1:A:643:VAL:HG22	1:A:686:VAL:HG22	1.96	0.46
1:A:815:ARG:HA	1:A:818:LYS:HD3	1.97	0.46
1:B:168:LEU:HD23	1:B:171:ARG:HD3	1.97	0.46
1:C:508:GLU:HA	1:C:511:LYS:HE3	1.98	0.46
1:D:195:GLN:HE21	1:D:232:LEU:HG	1.80	0.46
1:F:793:ILE:HG12	1:F:844:ILE:HB	1.97	0.46
1:F:610:GLY:O	1:F:614:LEU:N	2.46	0.46
1:F:684:PRO:HA	1:F:687:PHE:HD2	1.80	0.46
1:D:663:THR:HB	1:D:707:VAL:HG21	1.97	0.46
1:E:724:LEU:HD21	1:E:740:LEU:HG	1.97	0.46

*Continued on next page...*

*Continued from previous page...*

Atom-1	Atom-2	Interatomic distance (Å)	Clash overlap (Å)
1:A:703:GLN:OE1	1:A:705:ARG:NH1	2.47	0.46
1:B:815:ARG:NH2	3:B:1002:AGS:O3A	2.49	0.46
1:D:302:ALA:HB1	1:D:308:LEU:HB2	1.97	0.46
1:D:377:SER:HB2	1:D:389:LYS:HG3	1.98	0.46
1:D:691:LEU:HD21	1:D:752:GLU:HB3	1.98	0.46
1:E:253:GLY:O	1:E:257:GLU:N	2.46	0.46
1:E:539:VAL:HG22	1:E:542:ARG:HH21	1.80	0.46
1:F:524:MET:HB3	1:F:527:LEU:HB2	1.98	0.45
1:A:569:ARG:HH11	1:A:620:ASN:HD22	1.63	0.45
1:A:655:GLY:O	1:A:659:GLY:N	2.50	0.45
1:C:422:LEU:HD22	1:C:444:LEU:HD11	1.98	0.45
1:D:167:ASP:OD1	1:D:168:LEU:N	2.50	0.45
3:E:1002:AGS:O2G	3:E:1002:AGS:O1A	2.35	0.45
1:A:232:LEU:HD22	1:A:274:ILE:HD11	1.99	0.45
1:E:362:HIS:CD2	1:E:473:GLN:HG2	2.51	0.45
1:F:422:LEU:HD22	1:F:444:LEU:HD11	1.97	0.45
1:D:263:LEU:HD23	1:D:266:LEU:HD12	1.98	0.45
1:E:729:PHE:HD1	1:E:737:MET:HG2	1.82	0.45
1:B:208:PRO:HD3	1:B:315:THR:HG23	1.99	0.45
1:B:809:ASP:OD1	1:B:809:ASP:N	2.49	0.45
1:E:196:ARG:NH2	1:F:392:ASP:OD1	2.40	0.45
1:B:604:LEU:HD23	1:B:718:SER:HB3	1.98	0.45
1:A:558:LYS:HG3	1:A:565:GLU:HG3	1.98	0.45
1:B:576:ALA:HB2	1:B:761:VAL:HG21	1.99	0.45
1:D:199:LYS:NZ	1:E:388:ASP:OD2	2.48	0.45
1:D:487:GLU:OE2	1:D:490:ARG:NH1	2.50	0.45
1:D:685:ASP:OD1	1:D:685:ASP:N	2.48	0.45
1:E:232:LEU:HD22	1:E:274:ILE:HD11	1.99	0.45
1:B:362:HIS:CD2	1:B:473:GLN:HG2	2.52	0.45
1:B:718:SER:OG	1:B:719:ASN:N	2.49	0.45
1:D:696:ASP:OD2	1:E:631:ARG:NH1	2.44	0.45
1:C:362:HIS:CD2	1:C:473:GLN:HG2	2.52	0.45
1:D:650:PRO:HG3	1:E:641:HIS:HD2	1.82	0.45
1:E:344:GLU:HA	1:E:347:ILE:HD12	1.98	0.45
1:A:664:GLU:OE1	1:A:667:ARG:NH2	2.49	0.45
1:B:569:ARG:HH11	1:B:620:ASN:HD22	1.65	0.45
1:B:827:ASN:O	1:B:831:GLN:HB2	2.17	0.45
1:D:358:GLU:OE2	1:D:365:ILE:N	2.41	0.45
1:F:368:PRO:HA	1:F:371:VAL:HG12	1.99	0.45
1:B:165:THR:HG21	1:B:238:LEU:HD23	1.99	0.44
1:C:793:ILE:HG12	1:C:844:ILE:HB	1.99	0.44

*Continued on next page...*

*Continued from previous page...*

Atom-1	Atom-2	Interatomic distance (Å)	Clash overlap (Å)
1:D:633:ASP:HA	1:D:677:ASP:HB3	1.99	0.44
1:E:803:LEU:HD13	1:E:821:ILE:HG12	1.99	0.44
1:A:849:ASN:HD21	1:A:854:VAL:HB	1.82	0.44
1:C:653:TYR:CZ	1:D:641:HIS:HB2	2.53	0.44
1:D:647:VAL:HG13	1:D:701:ASP:HA	1.98	0.44
1:E:354:LYS:HG3	1:E:365:ILE:HB	1.99	0.44
1:B:839:VAL:H	1:B:857:GLN:HE22	1.65	0.44
1:C:284:VAL:HG12	1:C:329:LEU:HD23	1.99	0.44
1:B:803:LEU:HD11	1:B:825:ILE:HD11	1.99	0.44
1:C:316:LEU:HD21	1:D:668:ARG:HG2	1.98	0.44
1:E:178:ASP:OD1	1:E:356:ARG:NH1	2.51	0.44
1:E:683:HIS:HA	1:E:684:PRO:HD3	1.84	0.44
1:B:631:ARG:NE	1:B:633:ASP:OD1	2.48	0.44
1:C:502:GLN:HA	1:C:506:ILE:HD13	1.99	0.44
1:D:294:ASP:OD1	1:D:294:ASP:N	2.47	0.44
1:E:211:GLY:N	3:E:1001:AGS:O2B	2.44	0.44
1:D:195:GLN:O	1:E:399:SER:OG	2.25	0.44
1:E:618:LEU:HA	1:E:618:LEU:HD23	1.84	0.44
1:A:625:SER:OG	1:A:626:ASP:N	2.51	0.44
1:B:275:LEU:HB3	1:B:310:CYS:HA	1.99	0.44
1:B:304:ALA:HB2	1:B:332:ARG:HG3	2.00	0.44
1:B:625:SER:HB3	1:B:628:ALA:HB2	1.99	0.44
1:C:331:ARG:NH1	1:C:332:ARG:HH22	2.16	0.44
1:C:368:PRO:HA	1:C:371:VAL:HG12	1.99	0.44
1:C:689:ILE:HG23	1:C:699:LEU:HD11	1.99	0.44
1:C:695:ASP:HB2	1:C:756:ARG:NH1	2.33	0.44
1:C:718:SER:OG	1:C:719:ASN:N	2.51	0.44
1:A:503:TYR:CZ	1:B:427:GLN:HG2	2.53	0.43
1:C:169:THR:O	1:C:173:GLU:HB2	2.18	0.43
1:F:742:LEU:HD13	1:F:760:VAL:HG21	2.00	0.43
1:A:571:ILE:O	4:A:1002:ADP:N6	2.49	0.43
1:C:688:ASN:HB3	1:D:635:SER:HB2	1.99	0.43
1:D:394:ILE:HD13	1:D:536:ILE:HD11	1.99	0.43
1:D:646:LEU:HD12	1:D:647:VAL:HG23	1.99	0.43
1:F:508:GLU:HA	1:F:511:LYS:HE3	2.00	0.43
1:B:296:GLY:O	1:B:300:LYS:HB2	2.18	0.43
1:E:623:PHE:HZ	1:E:672:SER:HA	1.82	0.43
1:F:178:ASP:O	1:F:221:GLN:NE2	2.49	0.43
1:F:635:SER:HA	1:F:681:LYS:HB2	2.00	0.43
1:B:559:LEU:HD21	1:B:585:ARG:HG2	1.99	0.43
1:C:646:LEU:HD11	1:C:689:ILE:HG21	2.00	0.43

*Continued on next page...*

*Continued from previous page...*

Atom-1	Atom-2	Interatomic distance (Å)	Clash overlap (Å)
1:F:625:SER:HB3	1:F:628:ALA:HB2	2.00	0.43
1:A:789:ARG:HD2	1:F:591:LEU:HG	1.99	0.43
1:B:192:GLN:OE1	1:C:542:ARG:NH2	2.51	0.43
1:C:724:LEU:HD21	1:C:740:LEU:HG	2.00	0.43
1:D:632:ILE:HD11	1:D:662:LEU:HD13	2.00	0.43
1:A:178:ASP:OD2	3:A:1001:AGS:O2'	2.34	0.43
1:B:692:GLN:NE2	1:C:633:ASP:HB3	2.34	0.43
1:F:362:HIS:CD2	1:F:473:GLN:HG2	2.53	0.43
1:A:203:VAL:HG23	1:A:312:GLY:HA3	1.99	0.43
1:B:680:GLU:CD	1:B:718:SER:HG	2.20	0.43
1:D:394:ILE:HD13	1:D:394:ILE:HA	1.90	0.43
1:E:252:ARG:HG2	1:F:250:LYS:HD2	2.01	0.43
1:A:402:ARG:HD2	1:A:405:ILE:HD12	1.99	0.43
1:D:178:ASP:O	1:D:221:GLN:NE2	2.50	0.43
1:D:842:LYS:HB2	1:D:857:GLN:HE22	1.84	0.43
1:E:520:GLU:HA	1:E:523:THR:HG22	1.99	0.43
1:A:359:LEU:O	1:A:473:GLN:NE2	2.52	0.43
1:E:207:GLU:HG2	1:E:385:GLN:HE22	1.84	0.43
1:A:358:GLU:OE2	1:A:365:ILE:N	2.51	0.43
1:F:299:LEU:O	1:F:303:LEU:N	2.42	0.43
1:A:401:ILE:HG13	1:A:531:VAL:HG22	1.99	0.42
1:C:205:ILE:HD12	1:C:335:LYS:HG2	2.00	0.42
1:A:566:LEU:HD12	1:A:577:VAL:HG13	2.01	0.42
1:E:327:ALA:HA	1:E:330:GLU:HB2	2.00	0.42
1:A:571:ILE:HG13	1:A:770:HIS:HD2	1.84	0.42
1:C:197:ARG:NH2	1:D:178:ASP:OD2	2.52	0.42
1:C:552:MET:HG3	1:C:555:GLU:H	1.85	0.42
1:A:849:ASN:HB2	1:A:852:ARG:H	1.83	0.42
1:B:278:ASP:OD1	1:B:278:ASP:N	2.52	0.42
1:B:602:LEU:HB3	1:B:760:VAL:HG22	2.01	0.42
1:B:611:LYS:HA	1:B:763:PHE:HE2	1.84	0.42
1:C:324:GLU:HG2	1:C:330:GLU:HG3	2.01	0.42
1:C:731:GLU:HG2	1:C:732:LEU:HD12	2.00	0.42
1:D:782:LEU:HD13	1:D:785:ARG:HH21	1.85	0.42
1:C:501:LEU:O	1:C:505:LYS:HB2	2.19	0.42
1:C:571:ILE:HD12	1:C:571:ILE:HA	1.97	0.42
1:A:663:THR:HB	1:A:707:VAL:HG21	2.01	0.42
1:B:663:THR:HB	1:B:707:VAL:HG21	2.01	0.42
3:D:1002:AGS:O2G	3:D:1002:AGS:O1B	2.32	0.42
1:A:161:LEU:O	1:A:165:THR:OG1	2.29	0.42
1:D:733:ASP:OD1	1:D:733:ASP:N	2.52	0.42

*Continued on next page...*



*Continued from previous page...*

Atom-1	Atom-2	Interatomic distance (Å)	Clash overlap (Å)
1:F:559:LEU:HD11	1:F:585:ARG:HG2	2.02	0.42
1:A:238:LEU:HD13	1:A:273:VAL:HG13	2.02	0.42
1:B:554:SER:O	1:B:558:LYS:HB2	2.20	0.42
1:B:618:LEU:HA	1:B:618:LEU:HD23	1.85	0.42
1:C:524:MET:HG3	1:C:529:ASN:HD22	1.85	0.42
1:C:696:ASP:OD2	1:D:631:ARG:NH1	2.52	0.42
1:D:544:THR:OG1	1:D:545:GLY:N	2.52	0.42
1:D:618:LEU:HD23	1:D:618:LEU:HA	1.75	0.42
1:E:691:LEU:HD21	1:E:753:PHE:HA	2.01	0.42
1:F:604:LEU:O	1:F:763:PHE:N	2.41	0.42
1:E:210:VAL:HA	1:E:387:PRO:HD2	2.01	0.42
1:B:334:GLN:HE22	1:C:543:TRP:HE1	1.68	0.41
1:C:786:LEU:HD23	1:C:786:LEU:HA	1.84	0.41
1:D:693:VAL:HG13	1:D:709:PHE:HD2	1.84	0.41
1:E:605:GLY:O	1:E:611:LYS:NZ	2.51	0.41
1:F:569:ARG:NH1	1:F:620:ASN:HD22	2.18	0.41
1:A:294:ASP:OD1	1:A:295:ALA:N	2.52	0.41
1:C:609:VAL:HG23	1:C:763:PHE:HD2	1.84	0.41
1:E:849:ASN:HD22	1:E:852:ARG:HB2	1.84	0.41
1:F:650:PRO:HA	1:F:651:PRO:HD3	1.91	0.41
1:B:699:LEU:HD12	1:B:699:LEU:HA	1.82	0.41
1:C:520:GLU:HA	1:C:523:THR:HG22	2.01	0.41
1:C:603:PHE:HA	1:C:761:VAL:HG22	2.02	0.41
1:C:631:ARG:NH2	1:C:677:ASP:OD2	2.43	0.41
1:D:300:LYS:HA	1:D:303:LEU:HB2	2.01	0.41
1:B:508:GLU:HG3	1:B:509:LEU:HD12	2.01	0.41
1:C:354:LYS:HG3	1:C:365:ILE:HB	2.02	0.41
1:D:204:LEU:HD23	1:D:336:VAL:HB	2.02	0.41
1:D:533:ASP:OD1	1:D:533:ASP:N	2.52	0.41
1:D:609:VAL:HG23	1:D:763:PHE:HD2	1.86	0.41
1:A:586:ARG:NH1	1:B:822:GLN:HE21	2.18	0.41
1:D:281:HIS:HB2	1:D:322:TYR:CD2	2.55	0.41
1:D:586:ARG:NH1	1:E:822:GLN:HE21	2.18	0.41
1:E:508:GLU:HA	1:E:511:LYS:HE3	2.02	0.41
1:F:677:ASP:OD1	1:F:717:THR:OG1	2.30	0.41
1:A:355:GLU:OE2	1:A:483:LYS:NZ	2.42	0.41
1:B:183:ARG:HA	1:B:183:ARG:HD3	1.91	0.41
1:B:238:LEU:HD13	1:B:273:VAL:HG13	2.03	0.41
1:C:353:LEU:HD23	1:C:353:LEU:HA	1.85	0.41
1:B:192:GLN:HE22	1:C:542:ARG:HH22	1.68	0.41
1:C:300:LYS:O	1:C:304:ALA:HB2	2.21	0.41

*Continued on next page...*

*Continued from previous page...*

Atom-1	Atom-2	Interatomic distance (Å)	Clash overlap (Å)
1:B:750:ARG:HH11	1:C:681:LYS:HE3	1.85	0.41
1:E:533:ASP:N	1:E:533:ASP:OD1	2.52	0.41
1:A:165:THR:HG22	1:A:240:LEU:HA	2.02	0.41
1:A:539:VAL:HG22	1:A:542:ARG:HH22	1.85	0.41
1:D:771:ILE:HG23	1:D:817:LEU:HD22	2.01	0.41
1:E:211:GLY:HA2	3:E:1001:AGS:H5'1	2.03	0.41
1:E:508:GLU:HA	1:E:511:LYS:HG2	2.03	0.41
1:E:733:ASP:OD1	1:E:733:ASP:N	2.49	0.41
1:B:562:MET:HG3	1:B:621:PHE:CE2	2.57	0.41
1:A:546:ILE:HG13	1:A:623:PHE:CE1	2.56	0.40
1:A:699:LEU:HD12	1:A:699:LEU:HA	1.95	0.40
1:A:849:ASN:HD22	1:A:852:ARG:HB2	1.86	0.40
1:B:651:PRO:HD2	1:C:645:ARG:HA	2.02	0.40
1:D:571:ILE:HD12	1:D:571:ILE:HA	1.88	0.40
1:E:688:ASN:OD1	1:E:750:ARG:NH1	2.54	0.40
1:F:673:VAL:HG13	1:F:713:VAL:HB	2.02	0.40
1:B:667:ARG:NE	1:B:705:ARG:HE	2.18	0.40
1:A:350:LEU:HD11	1:A:390:ALA:HB1	2.02	0.40
1:A:605:GLY:HA2	1:A:725:ILE:HD12	2.03	0.40
1:A:605:GLY:O	1:A:722:SER:OG	2.27	0.40
1:B:409:PRO:HG2	1:B:412:LEU:HD13	2.03	0.40
1:C:194:LEU:HA	1:C:194:LEU:HD23	1.92	0.40
1:D:612:THR:HG22	1:D:616:LYS:HE3	2.03	0.40
1:B:240:LEU:HB2	1:B:275:LEU:HD11	2.04	0.40
1:B:508:GLU:HA	1:B:511:LYS:HE3	2.02	0.40
1:C:683:HIS:ND1	1:C:685:ASP:OD1	2.45	0.40
1:E:489:ALA:O	1:E:493:GLY:N	2.49	0.40
1:E:570:VAL:HG21	1:E:614:LEU:HA	2.04	0.40
1:B:832:GLN:HA	1:B:835:SER:HB3	2.04	0.40
1:B:833:ILE:HG12	1:B:838:LEU:HD22	2.03	0.40
1:B:849:ASN:HD22	1:B:852:ARG:HB2	1.87	0.40
1:C:791:TYR:CZ	1:C:840:PRO:HG3	2.57	0.40
1:E:380:TYR:HD2	1:E:540:LEU:HD21	1.87	0.40

There are no symmetry-related clashes.

## 5.3 Torsion angles [i](#)

### 5.3.1 Protein backbone [i](#)

In the following table, the Percentiles column shows the percent Ramachandran outliers of the chain as a percentile score with respect to all PDB entries followed by that with respect to all EM entries.

The Analysed column shows the number of residues for which the backbone conformation was analysed, and the total number of residues.

Mol	Chain	Analysed	Favoured	Allowed	Outliers	Percentiles	
1	A	674/858 (79%)	623 (92%)	51 (8%)	0	100	100
1	B	683/858 (80%)	624 (91%)	58 (8%)	1 (0%)	51	84
1	C	683/858 (80%)	618 (90%)	65 (10%)	0	100	100
1	D	674/858 (79%)	624 (93%)	50 (7%)	0	100	100
1	E	676/858 (79%)	626 (93%)	49 (7%)	1 (0%)	51	84
1	F	663/858 (77%)	613 (92%)	50 (8%)	0	100	100
All	All	4053/5148 (79%)	3728 (92%)	323 (8%)	2 (0%)	100	100

All (2) Ramachandran outliers are listed below:

Mol	Chain	Res	Type
1	B	407	SER
1	E	407	SER

### 5.3.2 Protein sidechains [i](#)

In the following table, the Percentiles column shows the percent sidechain outliers of the chain as a percentile score with respect to all PDB entries followed by that with respect to all EM entries.

The Analysed column shows the number of residues for which the sidechain conformation was analysed, and the total number of residues.

Mol	Chain	Analysed	Rotameric	Outliers	Percentiles	
1	A	574/714 (80%)	573 (100%)	1 (0%)	93	96
1	B	574/714 (80%)	572 (100%)	2 (0%)	92	95
1	C	574/714 (80%)	573 (100%)	1 (0%)	93	96
1	D	574/714 (80%)	572 (100%)	2 (0%)	92	95
1	E	574/714 (80%)	573 (100%)	1 (0%)	93	96

*Continued on next page...*

*Continued from previous page...*

Mol	Chain	Analysed	Rotameric	Outliers	Percentiles	
1	F	566/714 (79%)	565 (100%)	1 (0%)	93	96
All	All	3436/4284 (80%)	3428 (100%)	8 (0%)	93	96

All (8) residues with a non-rotameric sidechain are listed below:

Mol	Chain	Res	Type
1	A	491	ARG
1	B	491	ARG
1	B	646	LEU
1	C	491	ARG
1	D	491	ARG
1	D	710	ARG
1	E	491	ARG
1	F	491	ARG

Sometimes sidechains can be flipped to improve hydrogen bonding and reduce clashes. All (36) such sidechains are listed below:

Mol	Chain	Res	Type
1	A	195	GLN
1	A	297	ASN
1	A	574	ASN
1	A	692	GLN
1	A	770	HIS
1	A	827	ASN
1	A	849	ASN
1	A	858	HIS
1	B	281	HIS
1	B	297	ASN
1	B	692	GLN
1	B	719	ASN
1	B	849	ASN
1	B	857	GLN
1	C	512	GLN
1	C	719	ASN
1	D	195	GLN
1	D	281	HIS
1	D	692	GLN
1	D	806	ASN
1	D	857	GLN
1	E	281	HIS
1	E	309	HIS

*Continued on next page...*

*Continued from previous page...*

Mol	Chain	Res	Type
1	E	573	GLN
1	E	641	HIS
1	E	770	HIS
1	E	806	ASN
1	E	822	GLN
1	E	823	GLN
1	E	849	ASN
1	E	857	GLN
1	F	726	GLN
1	F	770	HIS
1	F	822	GLN
1	F	849	ASN
1	F	858	HIS

### 5.3.3 RNA [i](#)

There are no RNA molecules in this entry.

### 5.4 Non-standard residues in protein, DNA, RNA chains [i](#)

There are no non-standard protein/DNA/RNA residues in this entry.

### 5.5 Carbohydrates [i](#)

There are no monosaccharides in this entry.

### 5.6 Ligand geometry [i](#)

11 ligands are modelled in this entry.

In the following table, the Counts columns list the number of bonds (or angles) for which Mogul statistics could be retrieved, the number of bonds (or angles) that are observed in the model and the number of bonds (or angles) that are defined in the Chemical Component Dictionary. The Link column lists molecule types, if any, to which the group is linked. The Z score for a bond length (or angle) is the number of standard deviations the observed value is removed from the expected value. A bond length (or angle) with  $|Z| > 2$  is considered an outlier worth inspection. RMSZ is the root-mean-square of all Z scores of the bond lengths (or angles).

Mol	Type	Chain	Res	Link	Bond lengths			Bond angles		
					Counts	RMSZ	$\# Z  > 2$	Counts	RMSZ	$\# Z  > 2$
3	AGS	B	1001	-	26,33,33	0.81	0	26,52,52	1.57	2 (7%)

Mol	Type	Chain	Res	Link	Bond lengths			Bond angles		
					Counts	RMSZ	# Z  > 2	Counts	RMSZ	# Z  > 2
3	AGS	D	1001	-	26,33,33	0.85	1 (3%)	26,52,52	1.34	2 (7%)
3	AGS	E	1001	-	26,33,33	0.73	0	26,52,52	1.43	2 (7%)
3	AGS	E	1002	-	26,33,33	0.74	0	26,52,52	1.40	5 (19%)
4	ADP	A	1002	-	24,29,29	1.07	2 (8%)	29,45,45	2.17	5 (17%)
3	AGS	D	1002	-	26,33,33	0.81	0	26,52,52	1.49	2 (7%)
3	AGS	B	1002	-	26,33,33	0.73	0	26,52,52	1.40	3 (11%)
3	AGS	A	1001	-	26,33,33	0.83	0	26,52,52	1.38	2 (7%)
3	AGS	C	1001	-	26,33,33	0.83	0	26,52,52	1.50	2 (7%)
3	AGS	C	1002	-	26,33,33	0.83	0	26,52,52	1.39	3 (11%)
4	ADP	F	1001	-	24,29,29	0.99	1 (4%)	29,45,45	1.43	4 (13%)

In the following table, the Chirals column lists the number of chiral outliers, the number of chiral centers analysed, the number of these observed in the model and the number defined in the Chemical Component Dictionary. Similar counts are reported in the Torsion and Rings columns. '-' means no outliers of that kind were identified.

Mol	Type	Chain	Res	Link	Chirals	Torsions	Rings
3	AGS	B	1001	-	-	5/17/38/38	0/3/3/3
3	AGS	D	1001	-	-	2/17/38/38	0/3/3/3
3	AGS	E	1001	-	-	7/17/38/38	0/3/3/3
3	AGS	E	1002	-	-	5/17/38/38	0/3/3/3
4	ADP	A	1002	-	-	1/12/32/32	0/3/3/3
3	AGS	D	1002	-	-	5/17/38/38	0/3/3/3
3	AGS	B	1002	-	-	0/17/38/38	0/3/3/3
3	AGS	A	1001	-	-	4/17/38/38	0/3/3/3
3	AGS	C	1001	-	-	6/17/38/38	0/3/3/3
3	AGS	C	1002	-	-	1/17/38/38	0/3/3/3
4	ADP	F	1001	-	-	4/12/32/32	0/3/3/3

All (4) bond length outliers are listed below:

Mol	Chain	Res	Type	Atoms	Z	Observed(Å)	Ideal(Å)
4	A	1002	ADP	C5-C4	2.83	1.48	1.40
4	A	1002	ADP	C2-N3	2.55	1.36	1.32
3	D	1001	AGS	PG-S1G	2.28	1.95	1.90
4	F	1001	ADP	C5-C4	2.22	1.46	1.40

All (32) bond angle outliers are listed below:

Mol	Chain	Res	Type	Atoms	Z	Observed(°)	Ideal(°)
3	B	1001	AGS	PA-O3A-PB	-6.73	109.73	132.83
4	A	1002	ADP	C3'-C2'-C1'	6.56	110.85	100.98
3	D	1002	AGS	PA-O3A-PB	-6.21	111.51	132.83
3	C	1001	AGS	PA-O3A-PB	-6.20	111.56	132.83
3	E	1001	AGS	PA-O3A-PB	-5.99	112.26	132.83
4	A	1002	ADP	C1'-N9-C4	5.92	137.05	126.64
3	A	1001	AGS	PA-O3A-PB	-5.71	113.23	132.83
3	D	1001	AGS	PA-O3A-PB	-5.55	113.78	132.83
3	B	1002	AGS	PA-O3A-PB	-5.25	114.82	132.83
3	C	1002	AGS	PA-O3A-PB	-4.92	115.95	132.83
3	E	1002	AGS	PA-O3A-PB	-4.36	117.88	132.83
4	F	1001	ADP	N3-C2-N1	-3.69	122.90	128.68
4	A	1002	ADP	N3-C2-N1	-3.60	123.05	128.68
4	A	1002	ADP	PA-O3A-PB	-3.42	121.09	132.83
4	F	1001	ADP	C3'-C2'-C1'	3.36	106.04	100.98
4	A	1002	ADP	O4'-C1'-C2'	-2.84	102.78	106.93
3	B	1002	AGS	C5-C6-N6	2.65	124.39	120.35
3	C	1002	AGS	C5-C6-N6	2.63	124.35	120.35
3	E	1002	AGS	C5-C6-N6	2.46	124.08	120.35
3	E	1002	AGS	C3'-C2'-C1'	2.46	104.67	100.98
3	A	1001	AGS	C5-C6-N6	2.40	124.00	120.35
3	C	1002	AGS	C3'-C2'-C1'	2.34	104.51	100.98
4	F	1001	ADP	C4-C5-N7	-2.27	107.03	109.40
3	E	1001	AGS	C5-C6-N6	2.24	123.75	120.35
3	C	1001	AGS	C5-C6-N6	2.22	123.72	120.35
3	B	1001	AGS	C5-C6-N6	2.21	123.71	120.35
3	E	1002	AGS	C1'-N9-C4	2.19	130.49	126.64
3	D	1002	AGS	C5-C6-N6	2.14	123.61	120.35
3	D	1001	AGS	C5-C6-N6	2.11	123.56	120.35
3	E	1002	AGS	O2G-PG-O3B	2.08	111.58	104.64
3	B	1002	AGS	C3'-C2'-C1'	2.07	104.10	100.98
4	F	1001	ADP	C2-N1-C6	2.03	122.23	118.75

There are no chirality outliers.

All (40) torsion outliers are listed below:

Mol	Chain	Res	Type	Atoms
3	A	1001	AGS	O4'-C4'-C5'-O5'
3	A	1001	AGS	C3'-C4'-C5'-O5'
3	B	1001	AGS	PB-O3B-PG-O2G
3	B	1001	AGS	PB-O3B-PG-O3G
3	C	1001	AGS	O4'-C4'-C5'-O5'
3	D	1002	AGS	C5'-O5'-PA-O1A

*Continued on next page...*

*Continued from previous page...*

Mol	Chain	Res	Type	Atoms
3	D	1002	AGS	C5'-O5'-PA-O2A
3	E	1001	AGS	PB-O3B-PG-O2G
3	E	1001	AGS	C5'-O5'-PA-O3A
3	E	1002	AGS	C5'-O5'-PA-O3A
4	F	1001	ADP	C5'-O5'-PA-O2A
3	C	1001	AGS	C3'-C4'-C5'-O5'
3	E	1001	AGS	O4'-C4'-C5'-O5'
3	D	1001	AGS	O4'-C4'-C5'-O5'
3	D	1001	AGS	C3'-C4'-C5'-O5'
3	B	1001	AGS	O4'-C4'-C5'-O5'
3	E	1002	AGS	O4'-C4'-C5'-O5'
3	E	1002	AGS	C3'-C4'-C5'-O5'
3	C	1001	AGS	C5'-O5'-PA-O3A
3	D	1002	AGS	C5'-O5'-PA-O3A
3	C	1001	AGS	C5'-O5'-PA-O1A
3	E	1001	AGS	C5'-O5'-PA-O1A
3	E	1001	AGS	C5'-O5'-PA-O2A
3	E	1002	AGS	C5'-O5'-PA-O1A
3	E	1002	AGS	C5'-O5'-PA-O2A
4	F	1001	ADP	C5'-O5'-PA-O1A
3	A	1001	AGS	PA-O3A-PB-O2B
3	C	1002	AGS	PB-O3A-PA-O2A
3	E	1001	AGS	PA-O3A-PB-O1B
3	B	1001	AGS	C3'-C4'-C5'-O5'
3	E	1001	AGS	PB-O3B-PG-O3G
3	B	1001	AGS	C4'-C5'-O5'-PA
3	D	1002	AGS	PA-O3A-PB-O2B
4	F	1001	ADP	PA-O3A-PB-O3B
3	C	1001	AGS	PG-O3B-PB-O1B
4	F	1001	ADP	C5'-O5'-PA-O3A
3	A	1001	AGS	PA-O3A-PB-O1B
3	D	1002	AGS	PA-O3A-PB-O1B
3	C	1001	AGS	C5'-O5'-PA-O2A
4	A	1002	ADP	O4'-C4'-C5'-O5'

There are no ring outliers.

11 monomers are involved in 35 short contacts:

Mol	Chain	Res	Type	Clashes	Symm-Clashes
3	B	1001	AGS	3	0
3	D	1001	AGS	2	0
3	E	1001	AGS	5	0

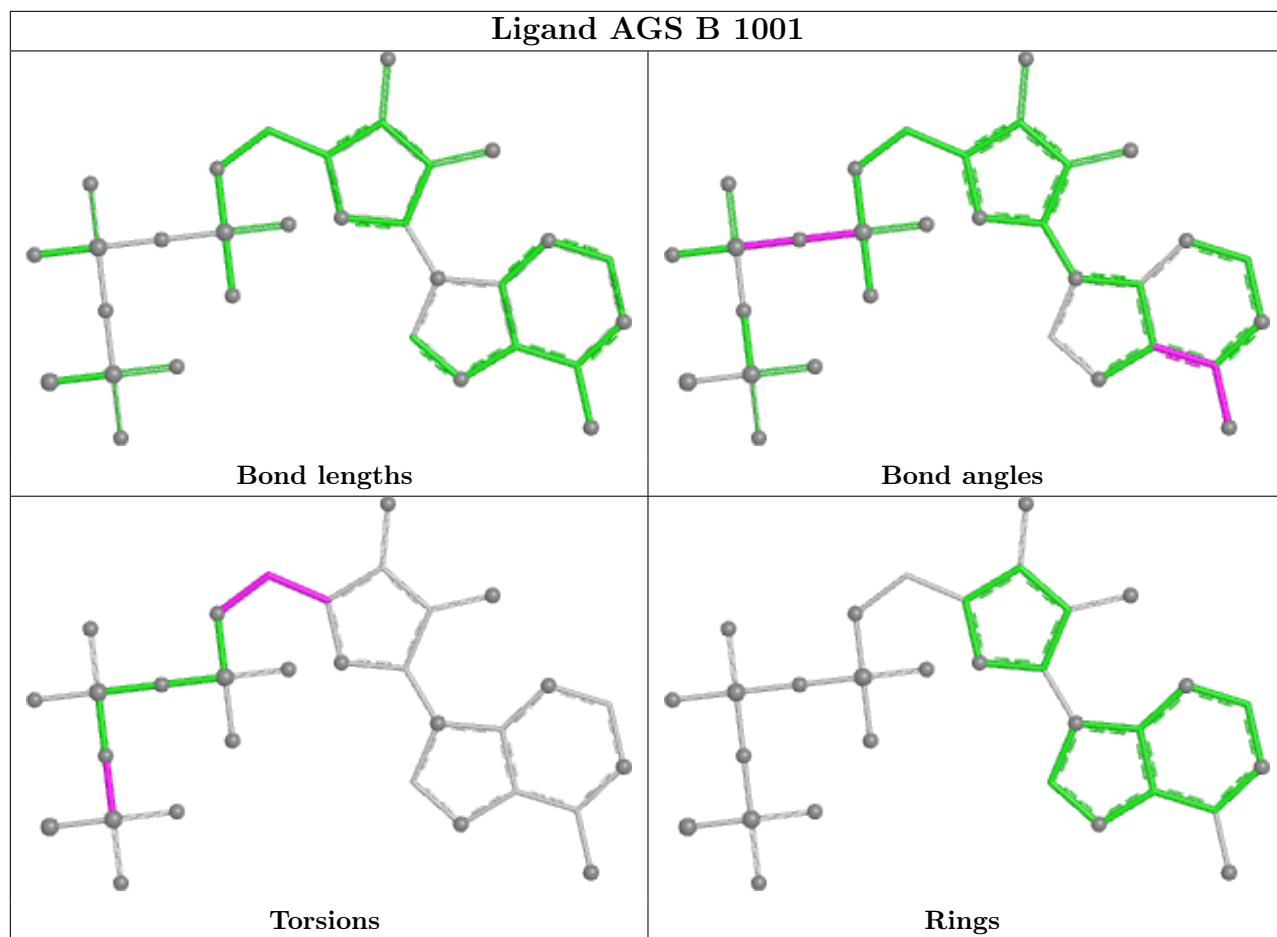
*Continued on next page...*

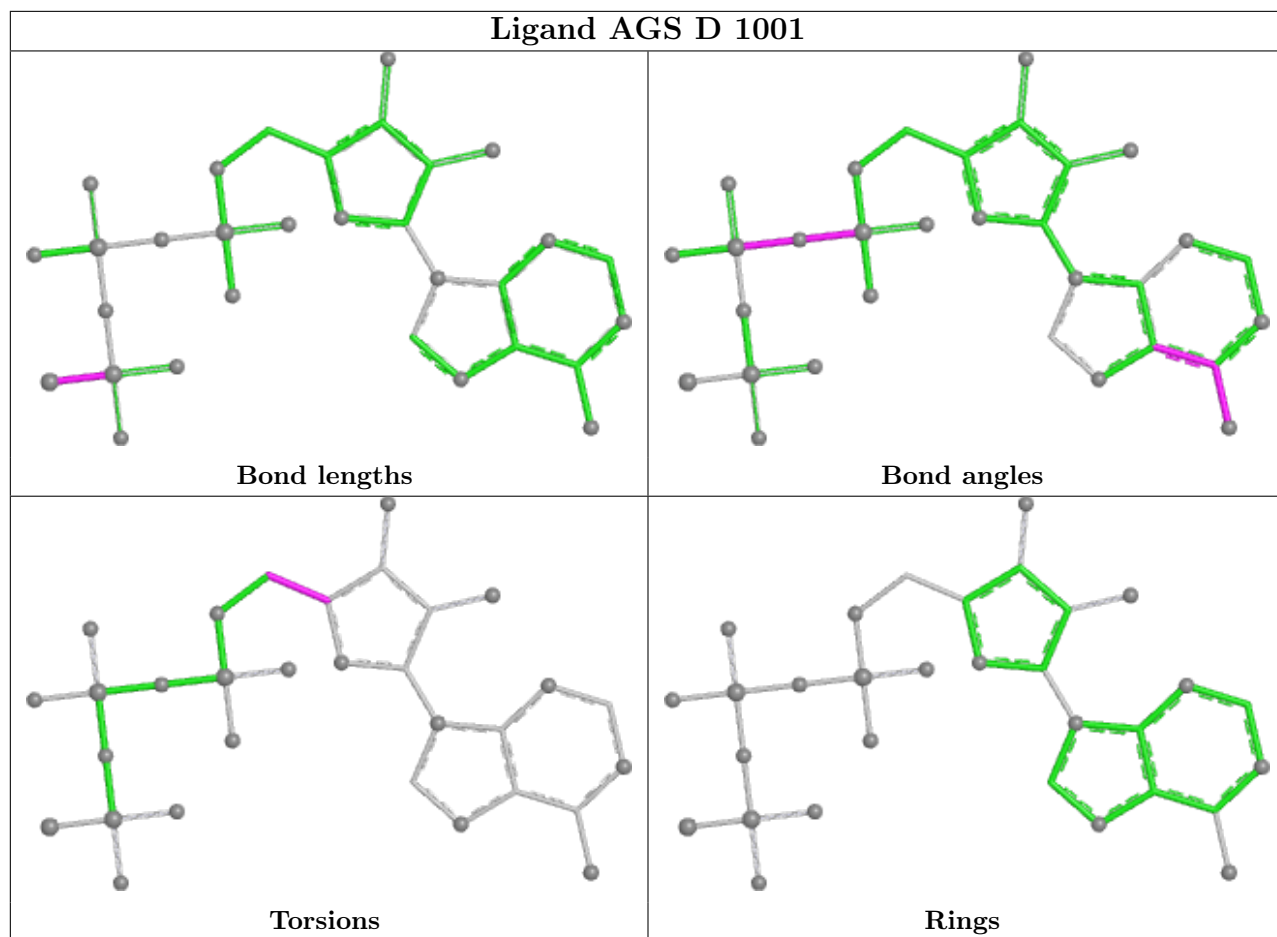


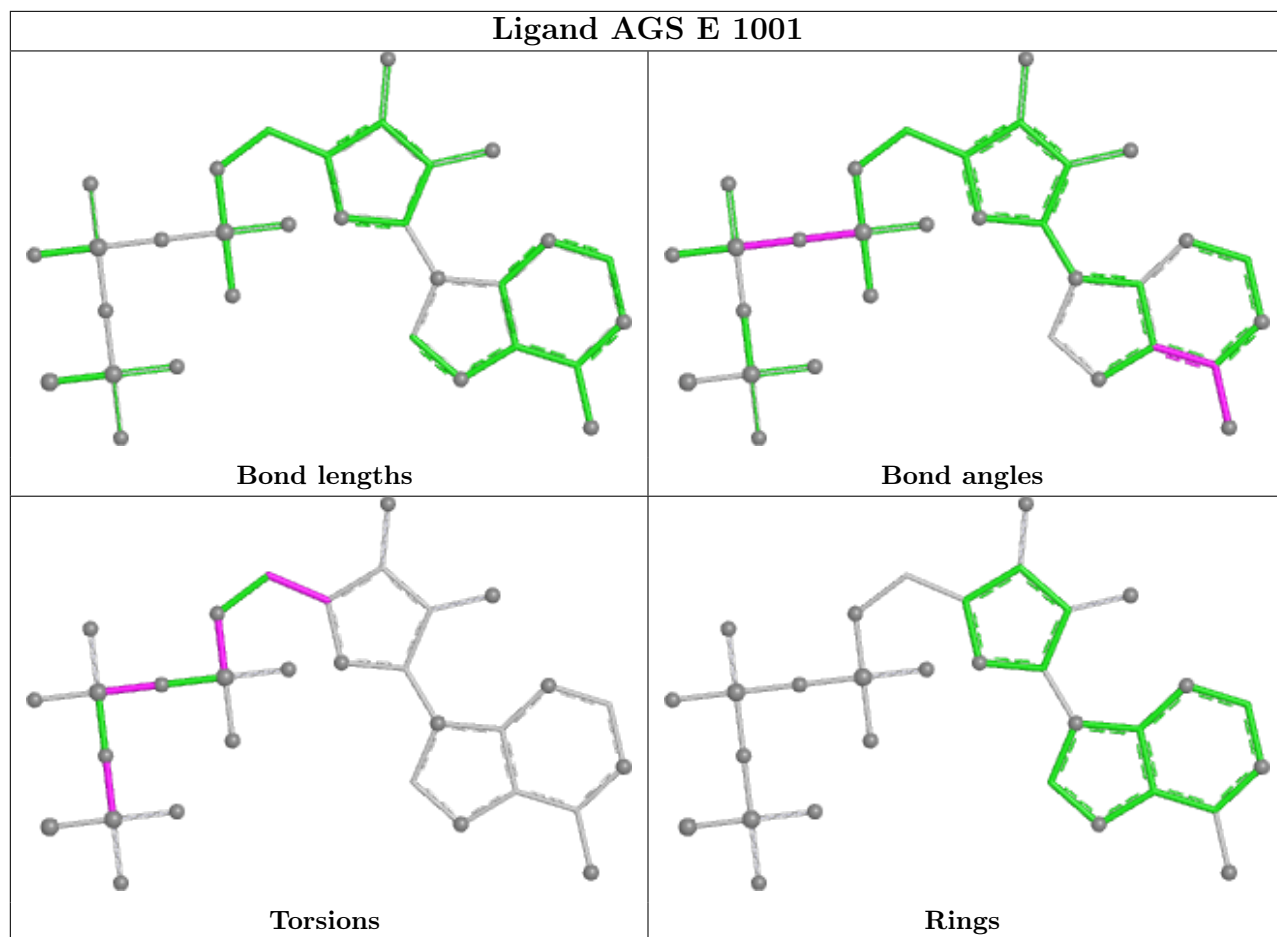
*Continued from previous page...*

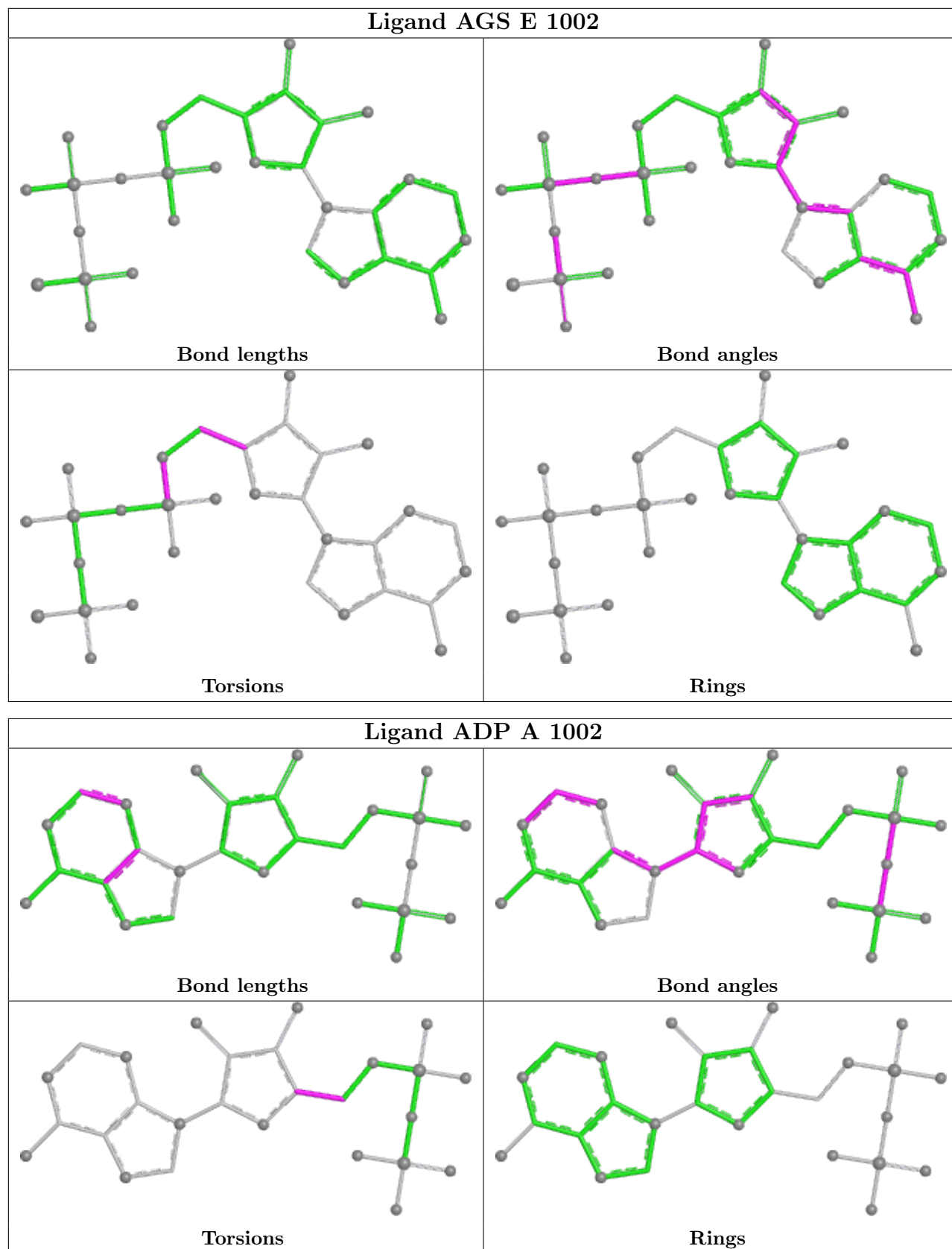
Mol	Chain	Res	Type	Clashes	Symm-Clashes
3	E	1002	AGS	4	0
4	A	1002	ADP	2	0
3	D	1002	AGS	4	0
3	B	1002	AGS	4	0
3	A	1001	AGS	3	0
3	C	1001	AGS	4	0
3	C	1002	AGS	3	0
4	F	1001	ADP	1	0

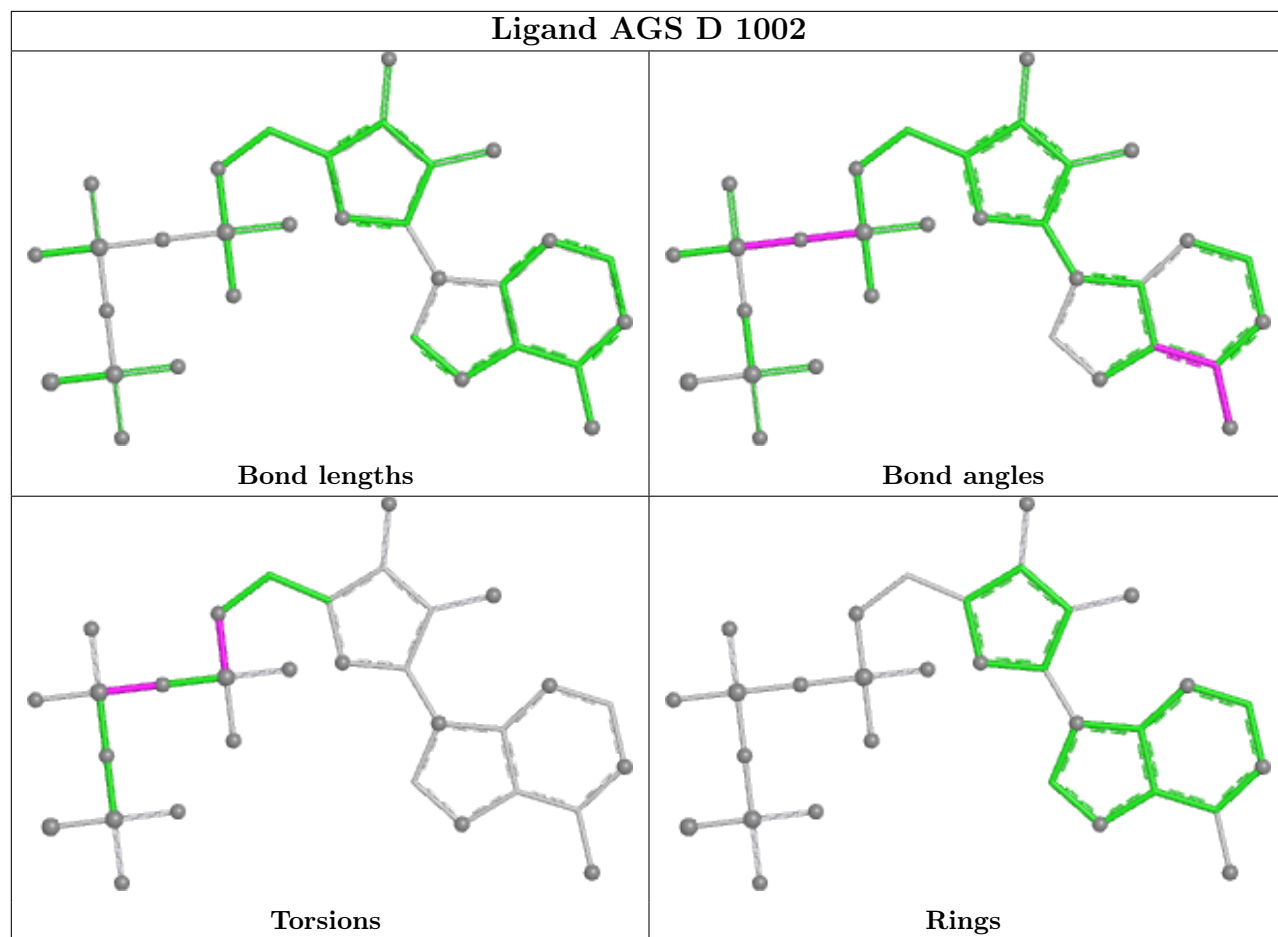
The following is a two-dimensional graphical depiction of Mogul quality analysis of bond lengths, bond angles, torsion angles, and ring geometry for all instances of the Ligand of Interest. In addition, ligands with molecular weight > 250 and outliers as shown on the validation Tables will also be included. For torsion angles, if less than 5% of the Mogul distribution of torsion angles is within 10 degrees of the torsion angle in question, then that torsion angle is considered an outlier. Any bond that is central to one or more torsion angles identified as an outlier by Mogul will be highlighted in the graph. For rings, the root-mean-square deviation (RMSD) between the ring in question and similar rings identified by Mogul is calculated over all ring torsion angles. If the average RMSD is greater than 60 degrees and the minimal RMSD between the ring in question and any Mogul-identified rings is also greater than 60 degrees, then that ring is considered an outlier. The outliers are highlighted in purple. The color gray indicates Mogul did not find sufficient equivalents in the CSD to analyse the geometry.

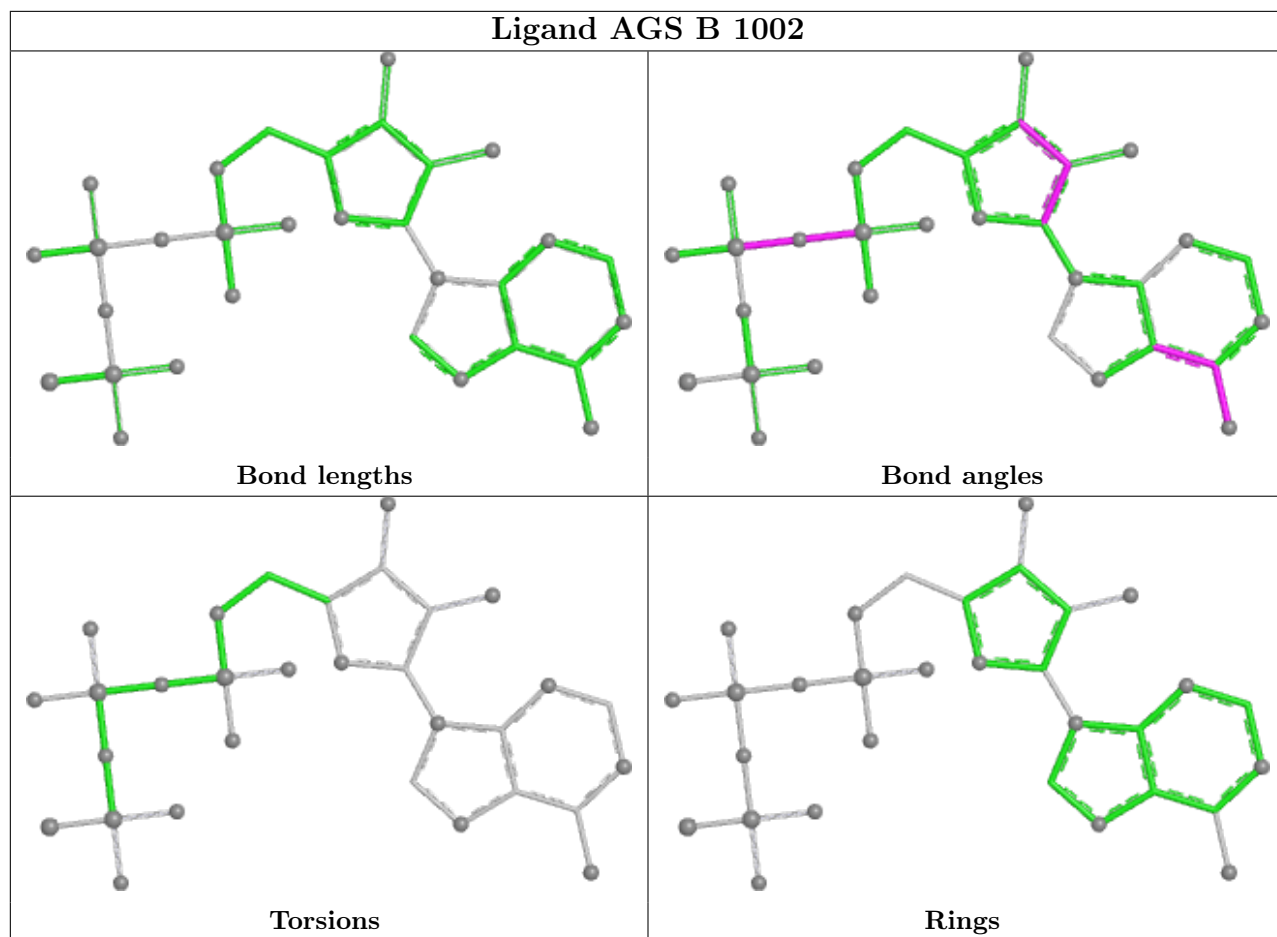


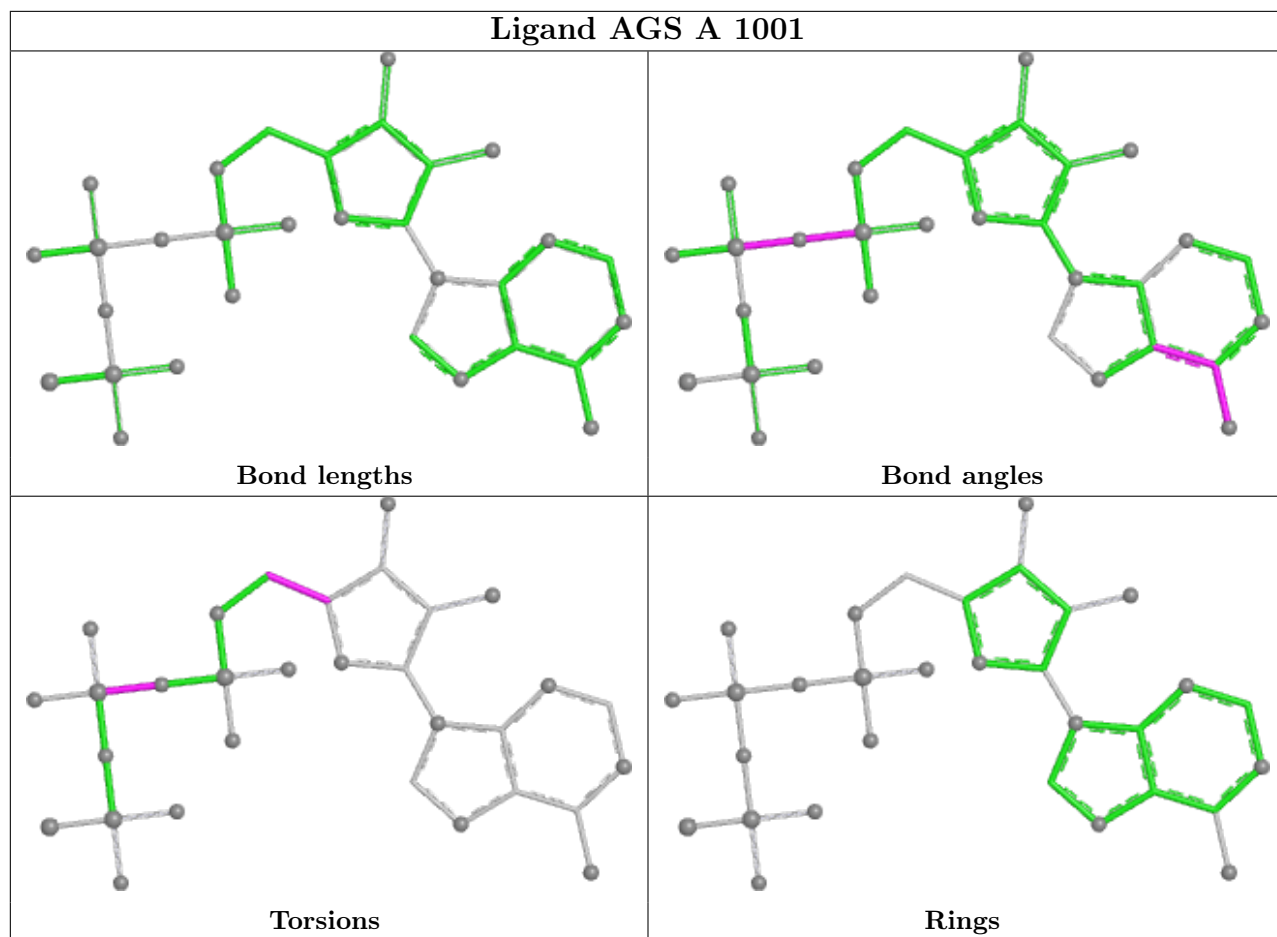




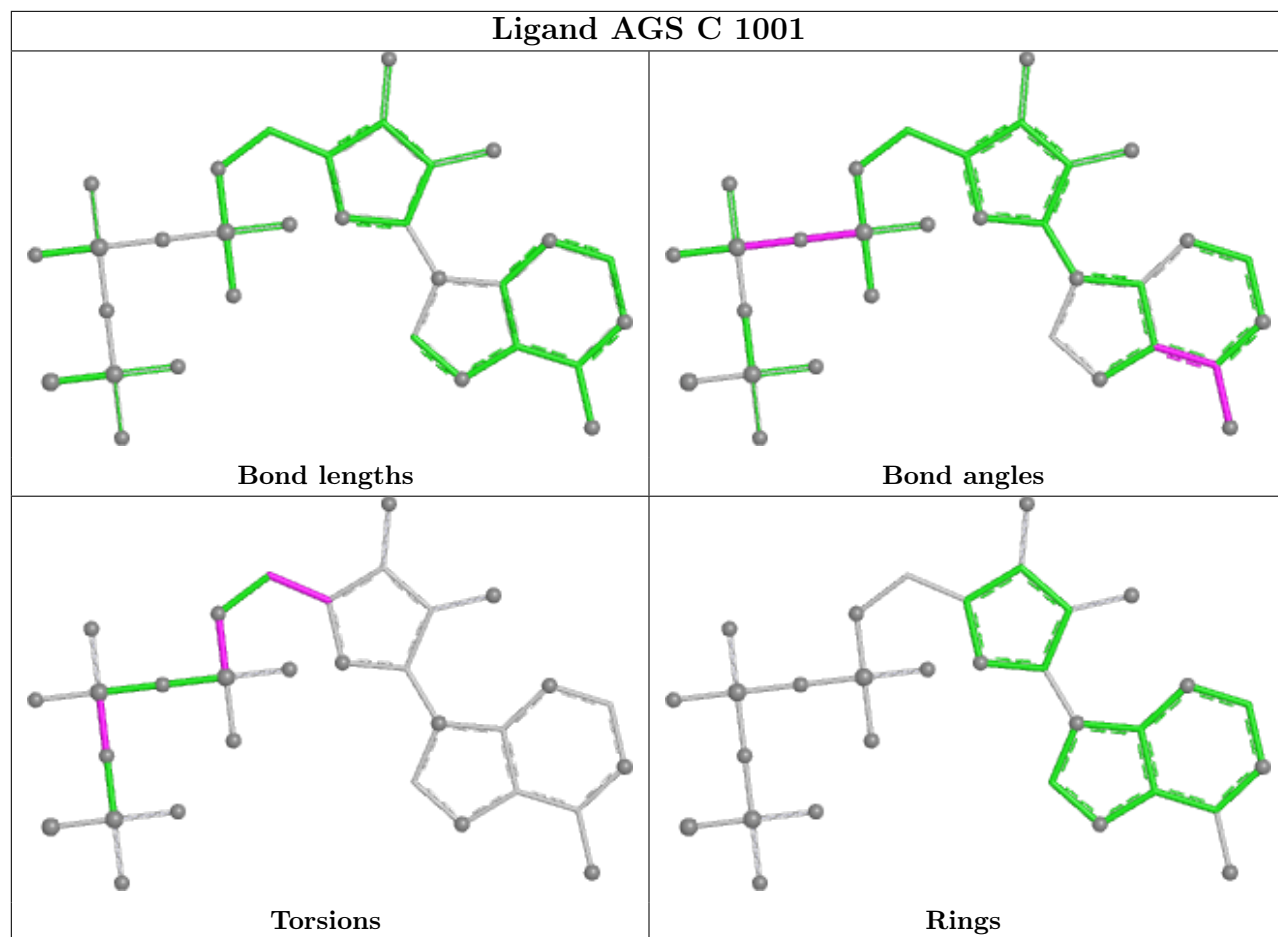


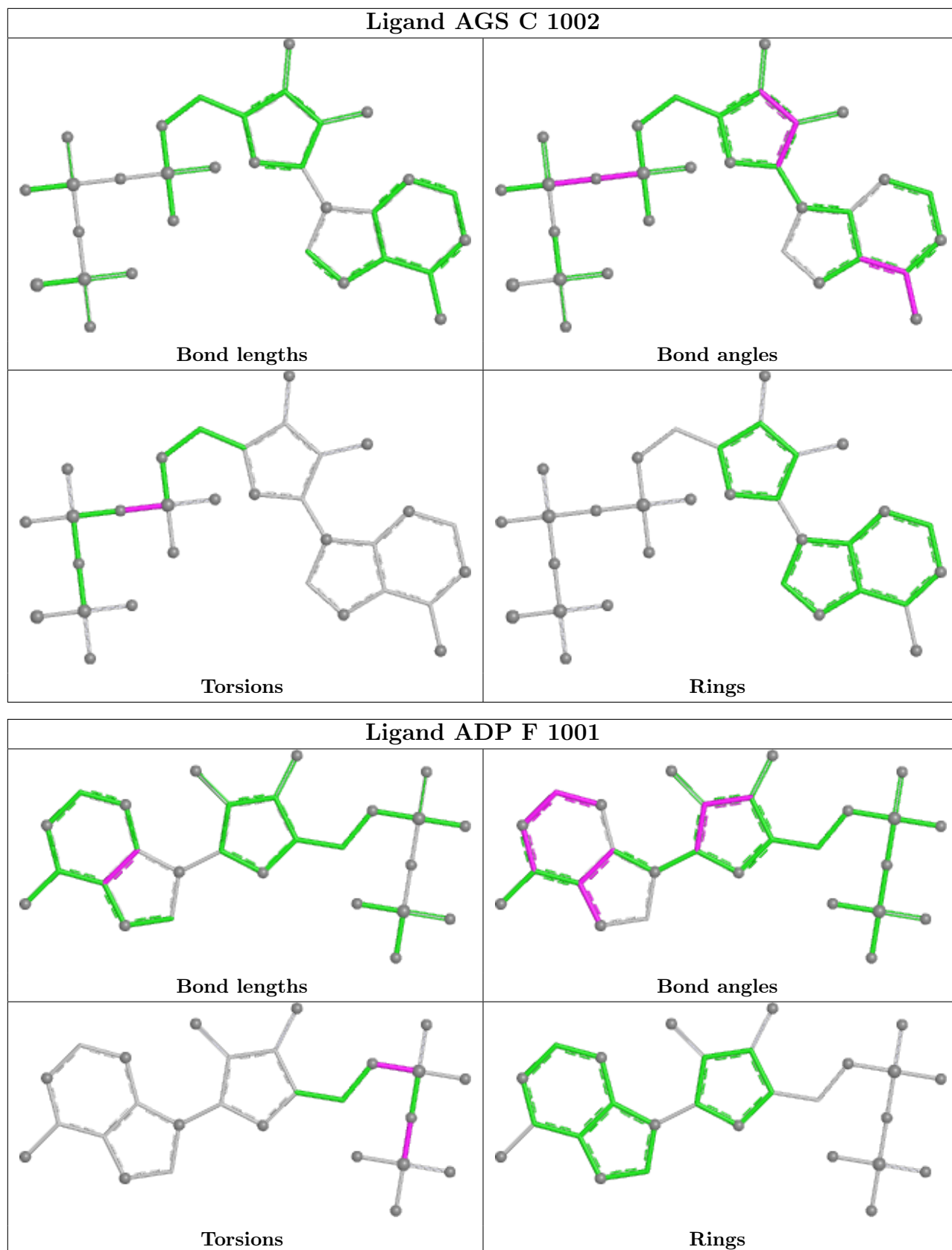












## 5.7 Other polymers [i](#)

There are no such residues in this entry.

## 5.8 Polymer linkage issues [i](#)

The following chains have linkage breaks:

Mol	Chain	Number of breaks
1	F	1
1	C	1
1	D	1
1	A	1
1	E	1
1	B	1

All chain breaks are listed below:

Model	Chain	Residue-1	Atom-1	Residue-2	Atom-2	Distance (Å)
1	F	526:LEU	C	527:LEU	N	5.42
1	C	526:LEU	C	527:LEU	N	5.34
1	D	526:LEU	C	527:LEU	N	4.76
1	A	526:LEU	C	527:LEU	N	3.86
1	E	526:LEU	C	527:LEU	N	3.22
1	B	526:LEU	C	527:LEU	N	3.19

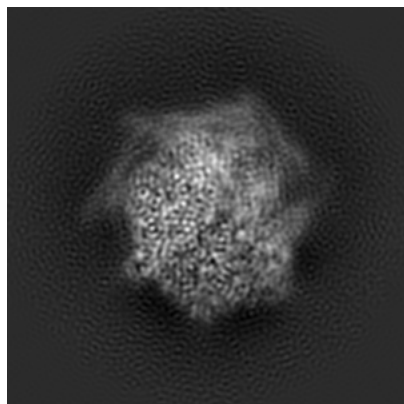
## 6 Map visualisation [i](#)

This section contains visualisations of the EMDB entry EMD-4941. These allow visual inspection of the internal detail of the map and identification of artifacts.

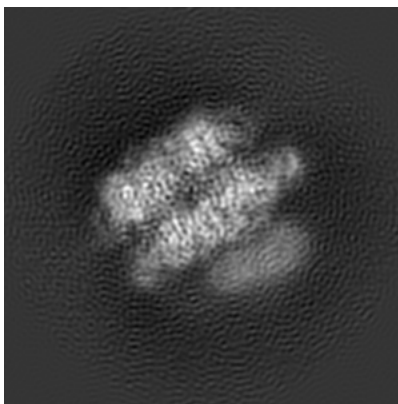
Images derived from a raw map, generated by summing the deposited half-maps, are presented below the corresponding image components of the primary map to allow further visual inspection and comparison with those of the primary map.

### 6.1 Orthogonal projections [i](#)

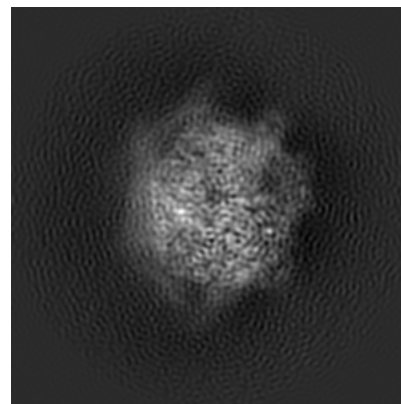
#### 6.1.1 Primary map



X

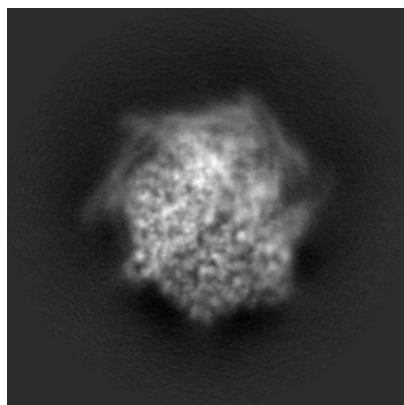


Y

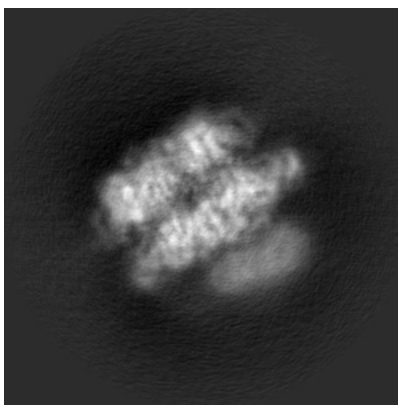


Z

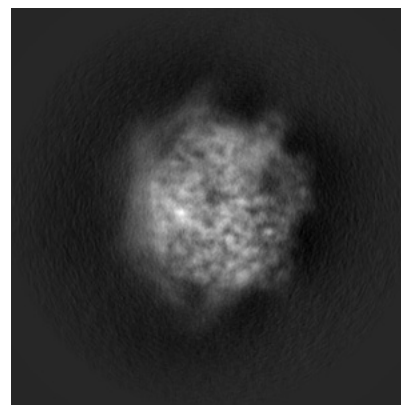
#### 6.1.2 Raw map



X



Y

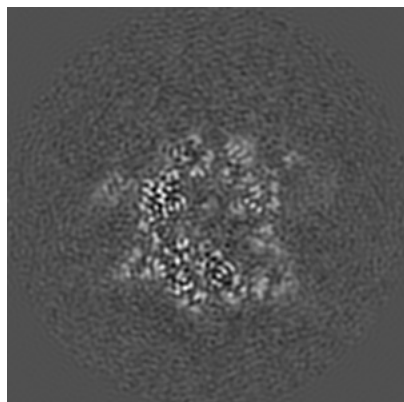


Z

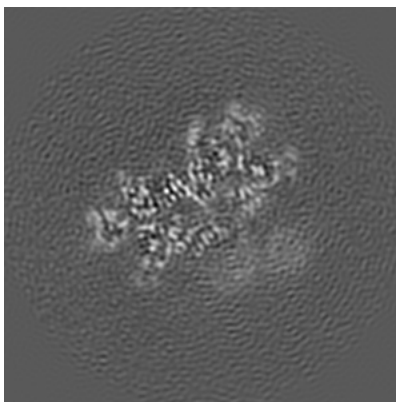
The images above show the map projected in three orthogonal directions.

## 6.2 Central slices [i](#)

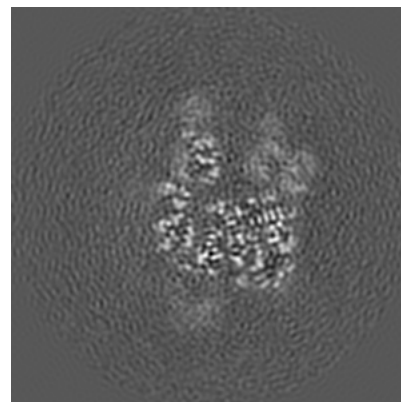
### 6.2.1 Primary map



X Index: 128

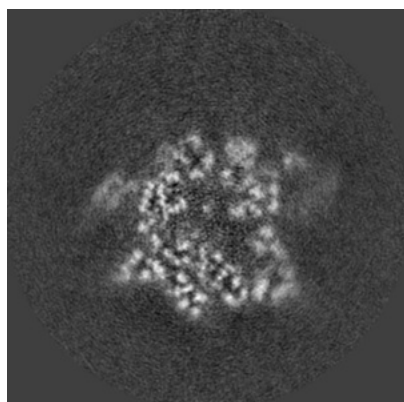


Y Index: 128

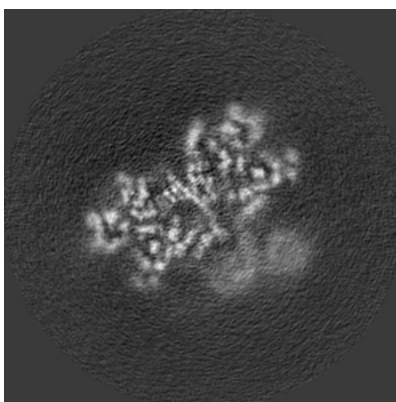


Z Index: 128

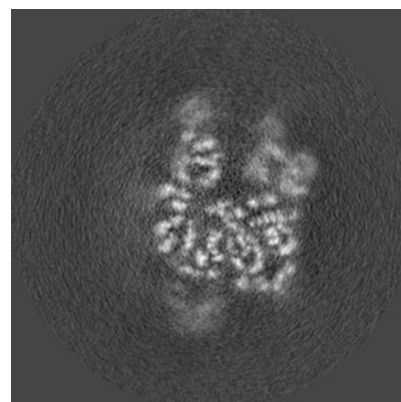
### 6.2.2 Raw map



X Index: 128



Y Index: 128

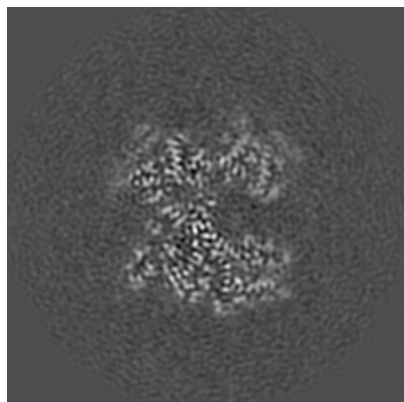


Z Index: 128

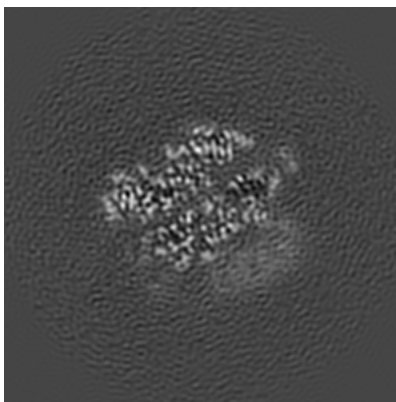
The images above show central slices of the map in three orthogonal directions.

## 6.3 Largest variance slices [i](#)

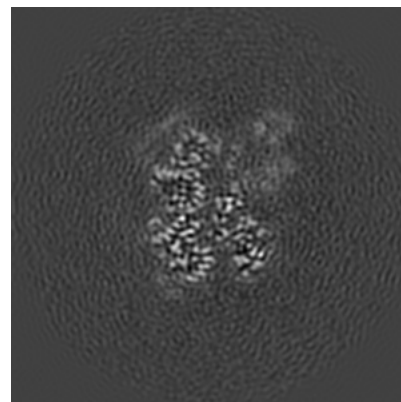
### 6.3.1 Primary map



X Index: 139

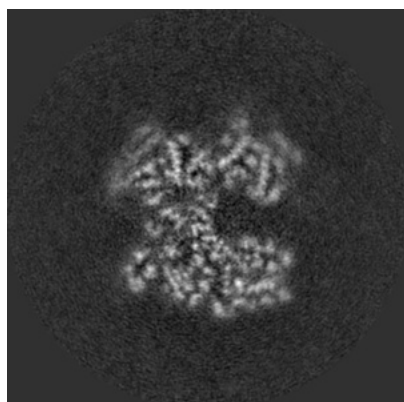


Y Index: 113

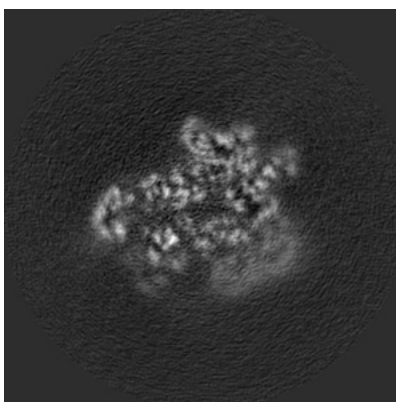


Z Index: 109

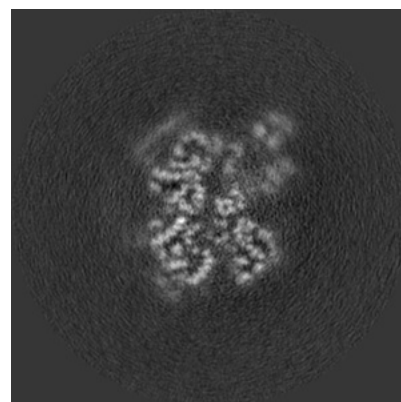
### 6.3.2 Raw map



X Index: 139



Y Index: 120

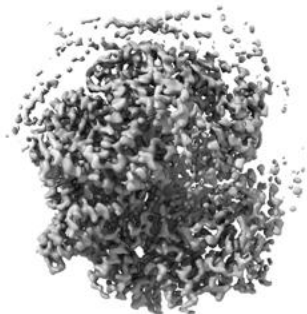


Z Index: 108

The images above show the largest variance slices of the map in three orthogonal directions.

## 6.4 Orthogonal surface views [i](#)

### 6.4.1 Primary map



X



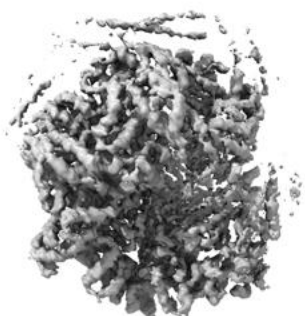
Y



Z

The images above show the 3D surface view of the map at the recommended contour level 0.05. These images, in conjunction with the slice images, may facilitate assessment of whether an appropriate contour level has been provided.

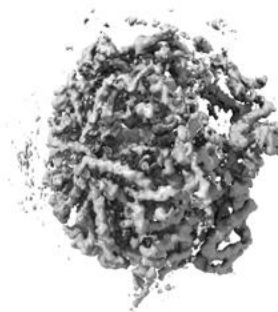
### 6.4.2 Raw map



X



Y



Z

These images show the 3D surface of the raw map. The raw map's contour level was selected so that its surface encloses the same volume as the primary map does at its recommended contour level.

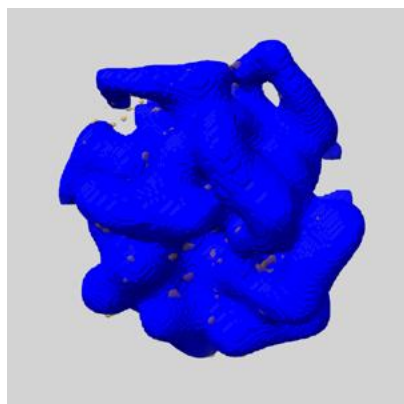
## 6.5 Mask visualisation [i](#)

This section shows the 3D surface view of the primary map at 50% transparency overlaid with the specified mask at 0% transparency

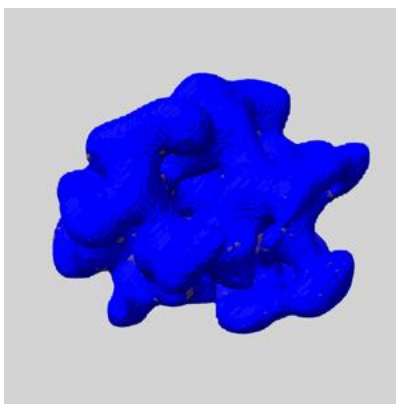
A mask typically either:

- Encompasses the whole structure
- Separates out a domain, a functional unit, a monomer or an area of interest from a larger structure

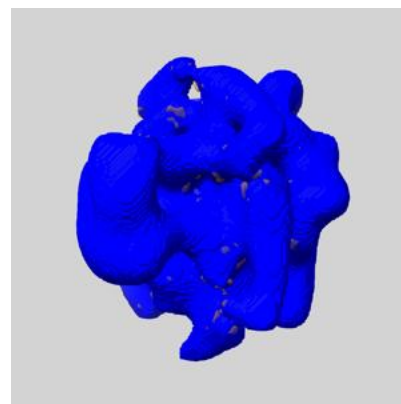
### 6.5.1 emd\_4941\_msk\_1.map [i](#)



X



Y



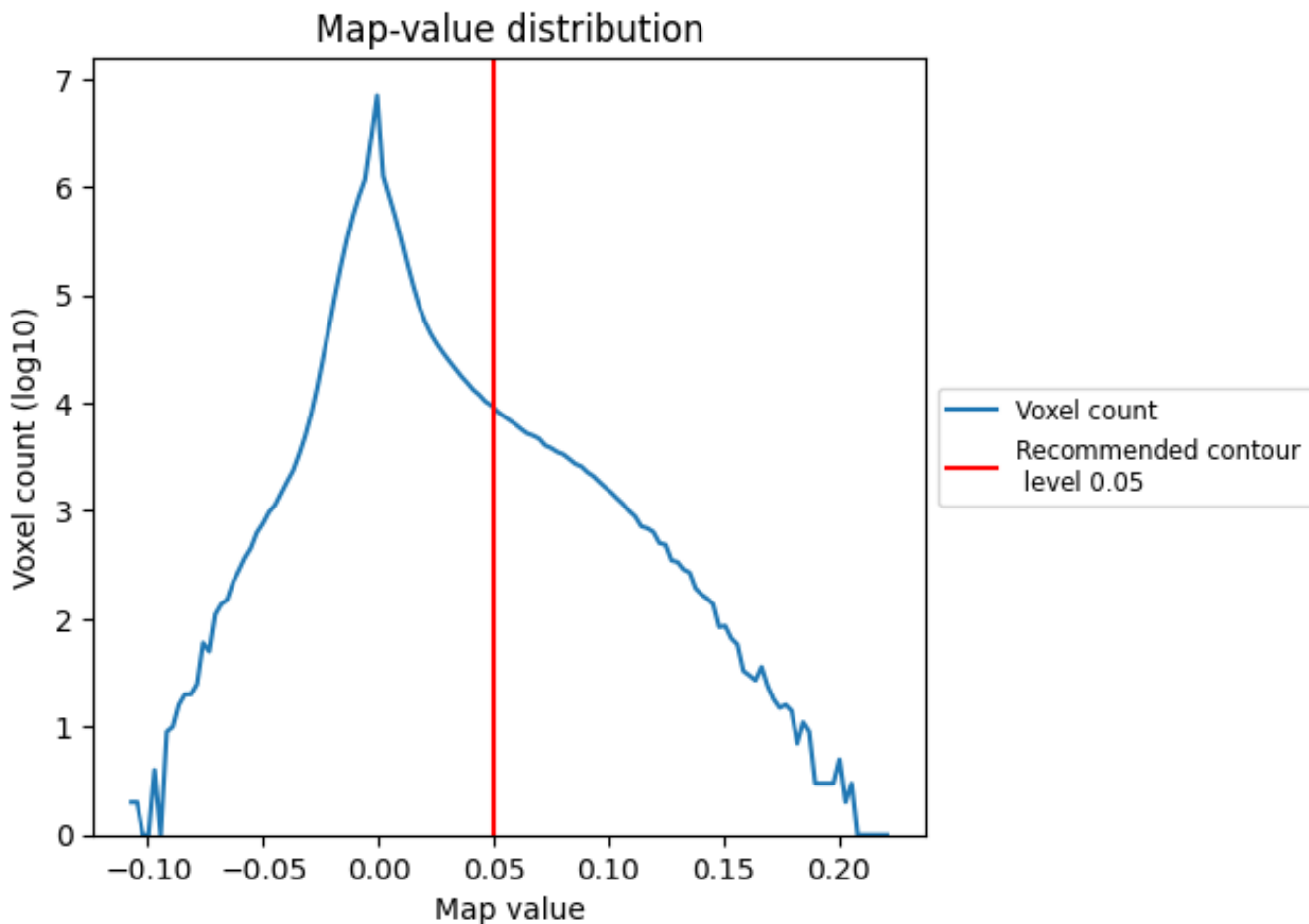
Z



## 7 Map analysis [i](#)

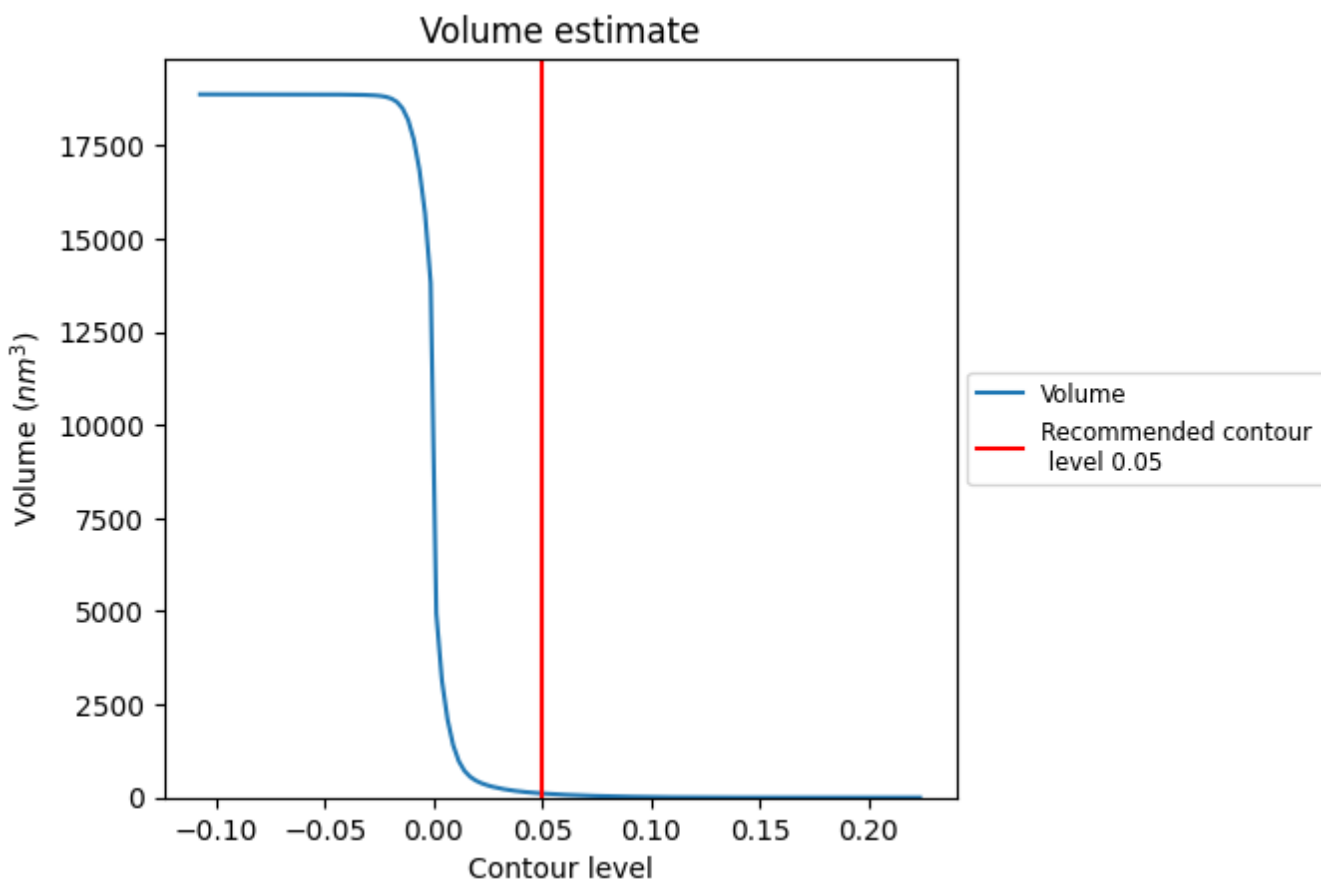
This section contains the results of statistical analysis of the map.

### 7.1 Map-value distribution [i](#)



The map-value distribution is plotted in 128 intervals along the x-axis. The y-axis is logarithmic. A spike in this graph at zero usually indicates that the volume has been masked.

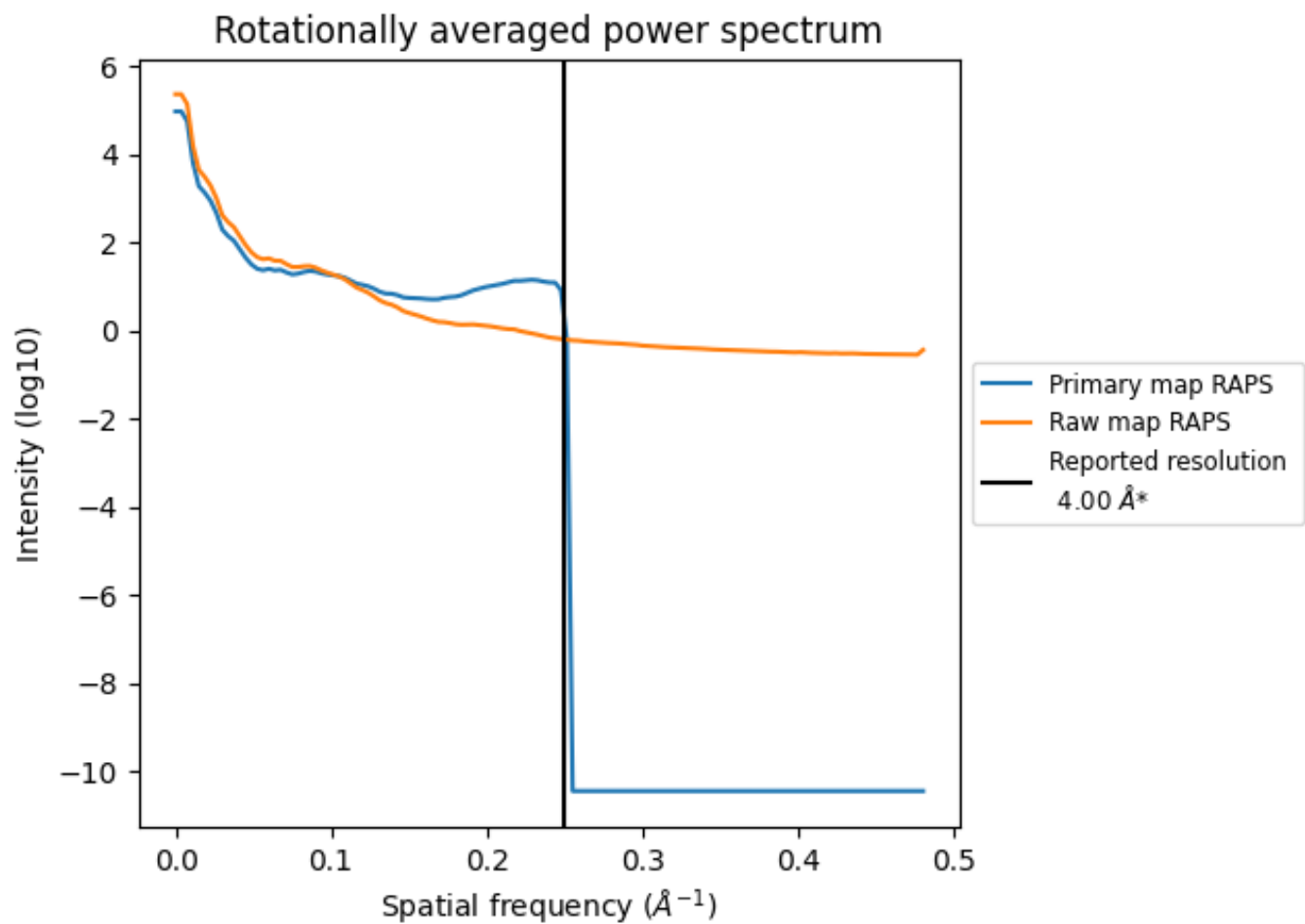
## 7.2 Volume estimate [i](#)



The volume at the recommended contour level is 110 nm<sup>3</sup>; this corresponds to an approximate mass of 99 kDa.

The volume estimate graph shows how the enclosed volume varies with the contour level. The recommended contour level is shown as a vertical line and the intersection between the line and the curve gives the volume of the enclosed surface at the given level.

### 7.3 Rotationally averaged power spectrum i

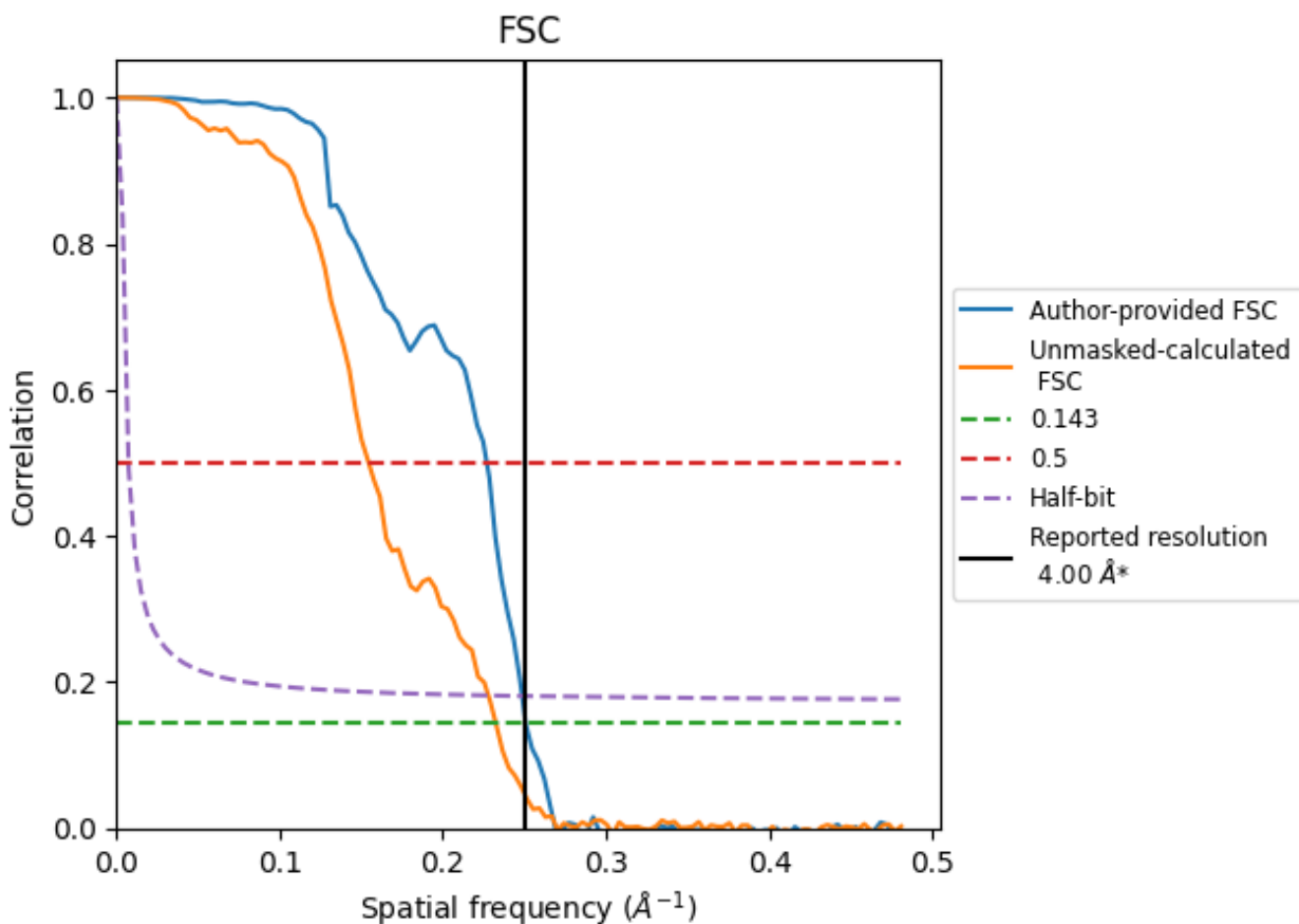


\*Reported resolution corresponds to spatial frequency of 0.250 Å<sup>-1</sup>

## 8 Fourier-Shell correlation [i](#)

Fourier-Shell Correlation (FSC) is the most commonly used method to estimate the resolution of single-particle and subtomogram-averaged maps. The shape of the curve depends on the imposed symmetry, mask and whether or not the two 3D reconstructions used were processed from a common reference. The reported resolution is shown as a black line. A curve is displayed for the half-bit criterion in addition to lines showing the 0.143 gold standard cut-off and 0.5 cut-off.

### 8.1 FSC [i](#)



\*Reported resolution corresponds to spatial frequency of 0.250 Å<sup>-1</sup>

## 8.2 Resolution estimates [i](#)

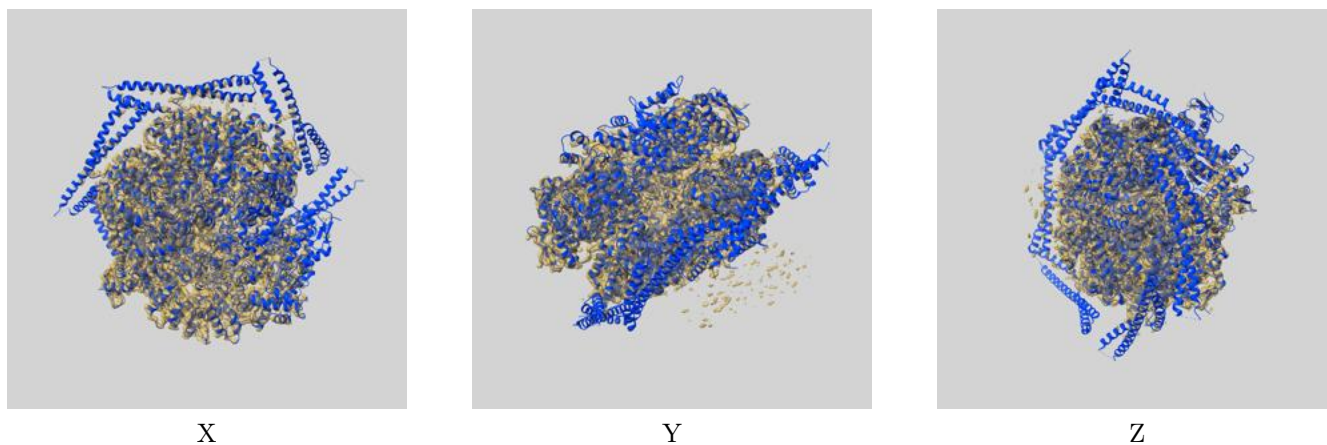
Resolution estimate (Å)	Estimation criterion (FSC cut-off)		
	0.143	0.5	Half-bit
Reported by author	4.00	-	-
Author-provided FSC curve	3.99	4.41	4.02
Unmasked-calculated*	4.30	6.47	4.39

\*Resolution estimate based on FSC curve calculated by comparison of deposited half-maps.

## 9 Map-model fit [i](#)

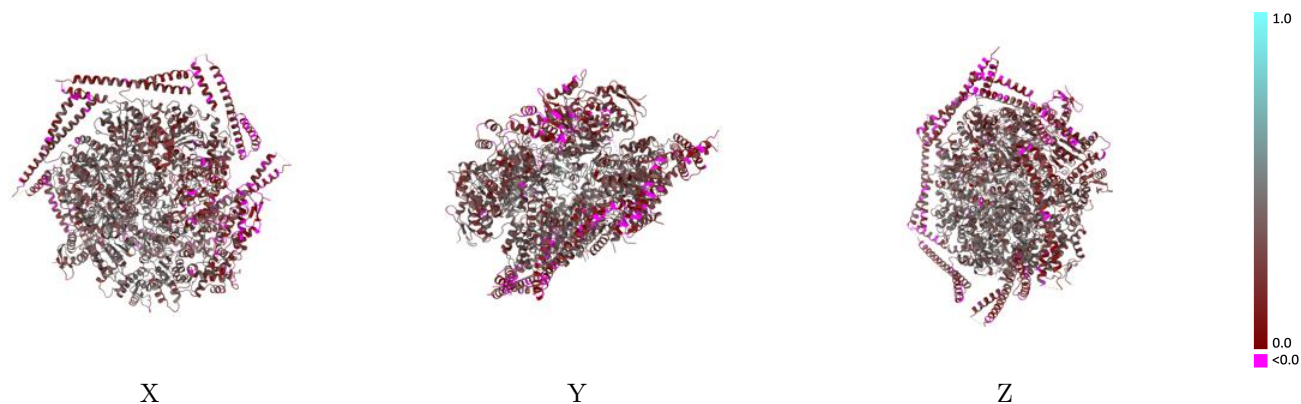
This section contains information regarding the fit between EMDB map EMD-4941 and PDB model 6RN3. Per-residue inclusion information can be found in section 3 on page 6.

### 9.1 Map-model overlay [i](#)



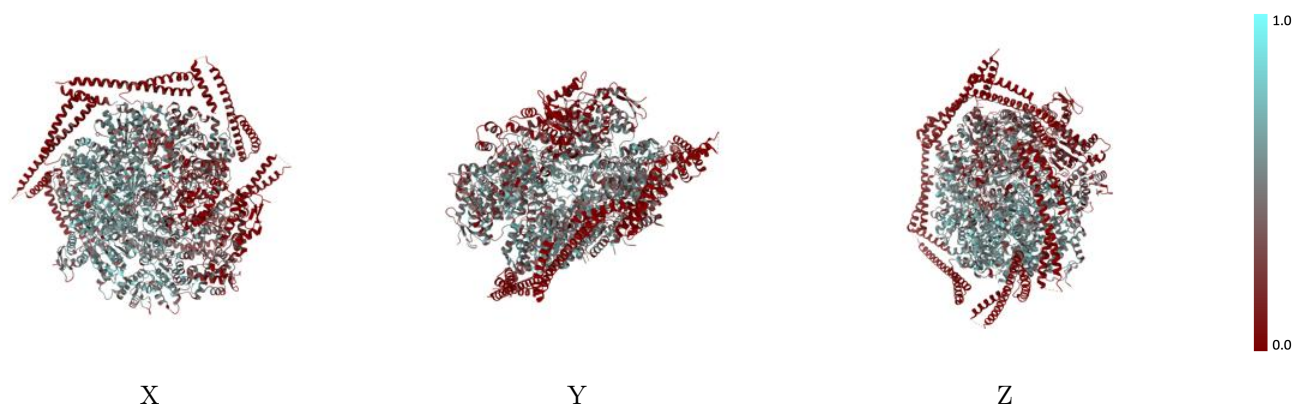
The images above show the 3D surface view of the map at the recommended contour level 0.05 at 50% transparency in yellow overlaid with a ribbon representation of the model coloured in blue. These images allow for the visual assessment of the quality of fit between the atomic model and the map.

## 9.2 Q-score mapped to coordinate model [i](#)



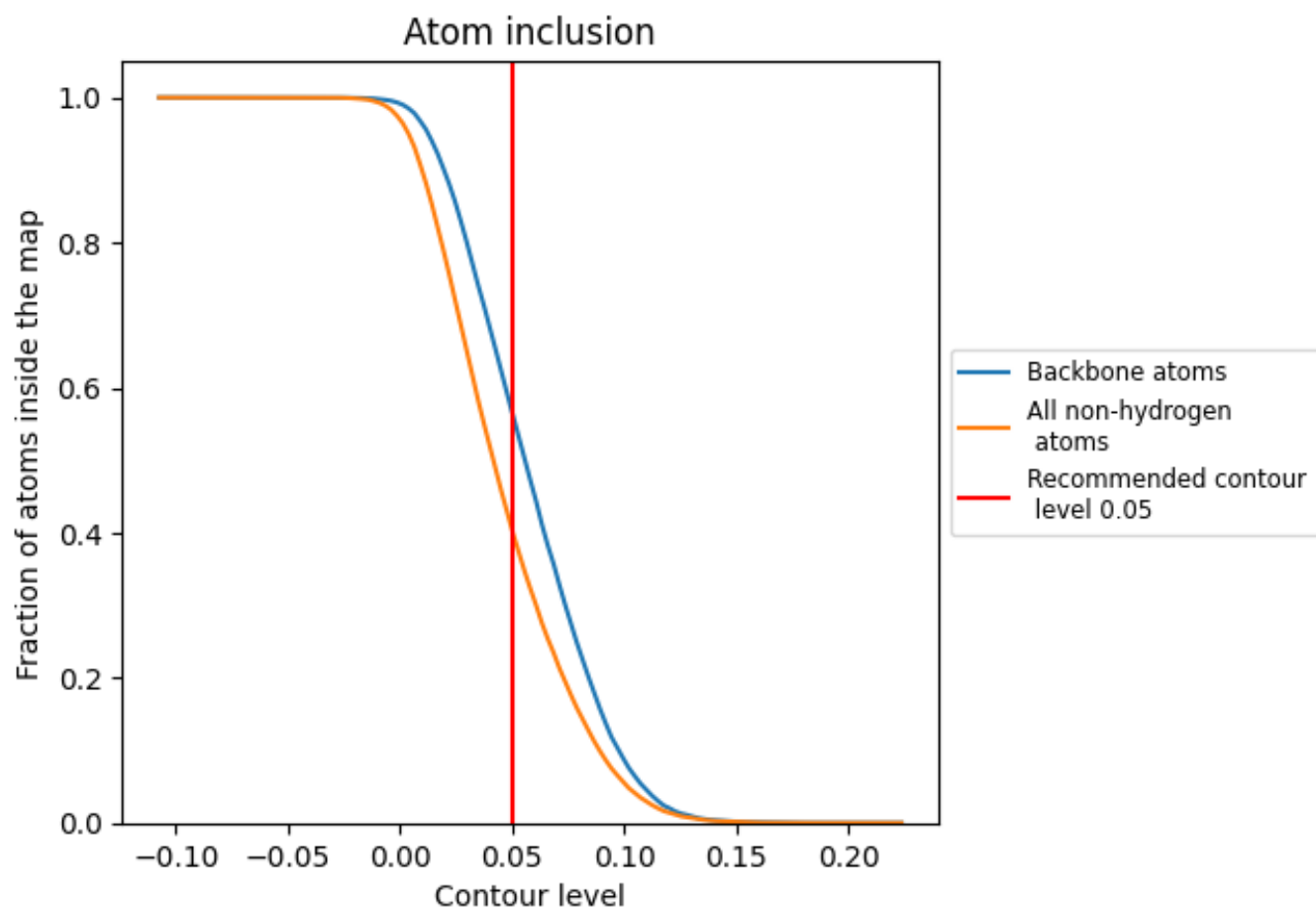
The images above show the model with each residue coloured according to its Q-score. This shows their resolvability in the map with higher Q-score values reflecting better resolvability. Please note: Q-score is calculating the resolvability of atoms, and thus high values are only expected at resolutions at which atoms can be resolved. Low Q-score values may therefore be expected for many entries.

## 9.3 Atom inclusion mapped to coordinate model [i](#)



The images above show the model with each residue coloured according to its atom inclusion. This shows to what extent they are inside the map at the recommended contour level (0.05).

## 9.4 Atom inclusion [i](#)



At the recommended contour level, 57% of all backbone atoms, 40% of all non-hydrogen atoms, are inside the map.



## 9.5 Map-model fit summary [i](#)

The table lists the average atom inclusion at the recommended contour level (0.05) and Q-score for the entire model and for each chain.

Chain	Atom inclusion	Q-score
All	0.4028	0.3060
A	0.3319	0.2660
B	0.4531	0.3270
C	0.4967	0.3520
D	0.4791	0.3440
E	0.4148	0.3080
F	0.2318	0.2310
S	0.6417	0.4180

