



## wwPDB EM Validation Summary Report ⓘ

Nov 21, 2022 – 12:15 PM EST

PDB ID : 7RGI  
EMDB ID : EMD-24450  
Title : HUMAN RETINAL VARIANT IMPDH1(546) TREATED WITH GTP, ATP, IMP, NAD+; INTERFACE-CENTERED  
Authors : Burrell, A.L.; Kollman, J.M.  
Deposited on : 2021-07-15  
Resolution : 3.60 Å(reported)

This is a wwPDB EM Validation Summary Report for a publicly released PDB entry.

We welcome your comments at [validation@mail.wwpdb.org](mailto:validation@mail.wwpdb.org)

A user guide is available at

<https://www.wwpdb.org/validation/2017/EMValidationReportHelp>

with specific help available everywhere you see the ⓘ symbol.

The types of validation reports are described at

<http://www.wwpdb.org/validation/2017/FAQs#types>.

---

The following versions of software and data (see [references ⓘ](#)) were used in the production of this report:

EMDB validation analysis : 0.0.1.dev43  
Mogul : 1.8.5 (274361), CSD as541be (2020)  
MolProbity : 4.02b-467  
buster-report : 1.1.7 (2018)  
Percentile statistics : 20191225.v01 (using entries in the PDB archive December 25th 2019)  
MapQ : 1.9.9  
Ideal geometry (proteins) : Engh & Huber (2001)  
Ideal geometry (DNA, RNA) : Parkinson et al. (1996)  
Validation Pipeline (wwPDB-VP) : 2.31.3

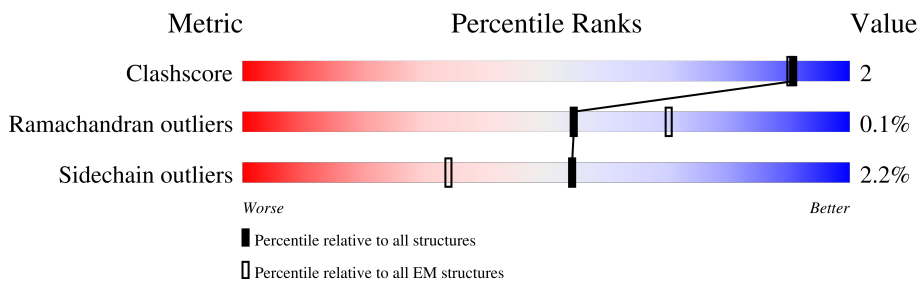
# 1 Overall quality at a glance

The following experimental techniques were used to determine the structure:

*ELECTRON MICROSCOPY*

The reported resolution of this entry is 3.60 Å.

Percentile scores (ranging between 0-100) for global validation metrics of the entry are shown in the following graphic. The table shows the number of entries on which the scores are based.



Metric	Whole archive (#Entries)	EM structures (#Entries)
Clashscore	158937	4297
Ramachandran outliers	154571	4023
Sidechain outliers	154315	3826

The table below summarises the geometric issues observed across the polymeric chains and their fit to the map. The red, orange, yellow and green segments of the bar indicate the fraction of residues that contain outliers for  $\geq 3$ , 2, 1 and 0 types of geometric quality criteria respectively. A grey segment represents the fraction of residues that are not modelled. The numeric value for each fraction is indicated below the corresponding segment, with a dot representing fractions  $\leq 5\%$ . The upper red bar (where present) indicates the fraction of residues that have poor fit to the EM map (all-atom inclusion  $< 40\%$ ). The numeric value is given above the bar.

Mol	Chain	Length	Quality of chain
1	A	546	
1	B	546	
1	C	546	
1	D	546	
1	E	546	
1	F	546	
1	G	546	
1	H	546	

## 2 Entry composition i

There are 3 unique types of molecules in this entry. The entry contains 44008 atoms, of which 22048 are hydrogens and 0 are deuteriums.

In the tables below, the AltConf column contains the number of residues with at least one atom in alternate conformation and the Trace column contains the number of residues modelled with at most 2 atoms.

- Molecule 1 is a protein called Inosine-5'-monophosphate dehydrogenase 1.

Mol	Chain	Residues	Atoms					AltConf	Trace	
			Total	C	H	N	O			S
1	A	357	5397	1691	2719	460	509	18	0	0
1	B	357	5397	1691	2719	460	509	18	0	0
1	C	357	5397	1691	2719	460	509	18	0	0
1	D	357	5397	1691	2719	460	509	18	0	0
1	E	357	5397	1691	2719	460	509	18	0	0
1	F	357	5397	1691	2719	460	509	18	0	0
1	G	357	5397	1691	2719	460	509	18	0	0
1	H	357	5397	1691	2719	460	509	18	0	0

There are 296 discrepancies between the modelled and reference sequences:

Chain	Residue	Modelled	Actual	Comment	Reference
A	510	THR	-	expression tag	UNP P20839
A	511	PHE	-	expression tag	UNP P20839
A	512	LEU	-	expression tag	UNP P20839
A	513	PRO	-	expression tag	UNP P20839
A	514	PHE	-	expression tag	UNP P20839
A	515	THR	-	expression tag	UNP P20839
A	516	LYS	-	expression tag	UNP P20839
A	517	SER	-	expression tag	UNP P20839
A	518	GLY	-	expression tag	UNP P20839
A	519	CYS	-	expression tag	UNP P20839
A	520	THR	-	expression tag	UNP P20839
A	521	GLU	-	expression tag	UNP P20839
A	522	ASP	-	expression tag	UNP P20839
A	523	SER	-	expression tag	UNP P20839

*Continued on next page...*

*Continued from previous page...*

Chain	Residue	Modelled	Actual	Comment	Reference
A	524	GLY	-	expression tag	UNP P20839
A	525	GLY	-	expression tag	UNP P20839
A	526	GLY	-	expression tag	UNP P20839
A	527	ARG	-	expression tag	UNP P20839
A	528	GLY	-	expression tag	UNP P20839
A	529	GLY	-	expression tag	UNP P20839
A	530	GLY	-	expression tag	UNP P20839
A	531	GLY	-	expression tag	UNP P20839
A	532	ASP	-	expression tag	UNP P20839
A	533	ALA	-	expression tag	UNP P20839
A	534	PRO	-	expression tag	UNP P20839
A	535	GLN	-	expression tag	UNP P20839
A	536	CYS	-	expression tag	UNP P20839
A	537	PRO	-	expression tag	UNP P20839
A	538	LEU	-	expression tag	UNP P20839
A	539	LEU	-	expression tag	UNP P20839
A	540	GLY	-	expression tag	UNP P20839
A	541	THR	-	expression tag	UNP P20839
A	542	ALA	-	expression tag	UNP P20839
A	543	SER	-	expression tag	UNP P20839
A	544	LEU	-	expression tag	UNP P20839
A	545	HIS	-	expression tag	UNP P20839
A	546	ASN	-	expression tag	UNP P20839
B	510	THR	-	expression tag	UNP P20839
B	511	PHE	-	expression tag	UNP P20839
B	512	LEU	-	expression tag	UNP P20839
B	513	PRO	-	expression tag	UNP P20839
B	514	PHE	-	expression tag	UNP P20839
B	515	THR	-	expression tag	UNP P20839
B	516	LYS	-	expression tag	UNP P20839
B	517	SER	-	expression tag	UNP P20839
B	518	GLY	-	expression tag	UNP P20839
B	519	CYS	-	expression tag	UNP P20839
B	520	THR	-	expression tag	UNP P20839
B	521	GLU	-	expression tag	UNP P20839
B	522	ASP	-	expression tag	UNP P20839
B	523	SER	-	expression tag	UNP P20839
B	524	GLY	-	expression tag	UNP P20839
B	525	GLY	-	expression tag	UNP P20839
B	526	GLY	-	expression tag	UNP P20839
B	527	ARG	-	expression tag	UNP P20839
B	528	GLY	-	expression tag	UNP P20839

*Continued on next page...*

*Continued from previous page...*

Chain	Residue	Modelled	Actual	Comment	Reference
B	529	GLY	-	expression tag	UNP P20839
B	530	GLY	-	expression tag	UNP P20839
B	531	GLY	-	expression tag	UNP P20839
B	532	ASP	-	expression tag	UNP P20839
B	533	ALA	-	expression tag	UNP P20839
B	534	PRO	-	expression tag	UNP P20839
B	535	GLN	-	expression tag	UNP P20839
B	536	CYS	-	expression tag	UNP P20839
B	537	PRO	-	expression tag	UNP P20839
B	538	LEU	-	expression tag	UNP P20839
B	539	LEU	-	expression tag	UNP P20839
B	540	GLY	-	expression tag	UNP P20839
B	541	THR	-	expression tag	UNP P20839
B	542	ALA	-	expression tag	UNP P20839
B	543	SER	-	expression tag	UNP P20839
B	544	LEU	-	expression tag	UNP P20839
B	545	HIS	-	expression tag	UNP P20839
B	546	ASN	-	expression tag	UNP P20839
C	510	THR	-	expression tag	UNP P20839
C	511	PHE	-	expression tag	UNP P20839
C	512	LEU	-	expression tag	UNP P20839
C	513	PRO	-	expression tag	UNP P20839
C	514	PHE	-	expression tag	UNP P20839
C	515	THR	-	expression tag	UNP P20839
C	516	LYS	-	expression tag	UNP P20839
C	517	SER	-	expression tag	UNP P20839
C	518	GLY	-	expression tag	UNP P20839
C	519	CYS	-	expression tag	UNP P20839
C	520	THR	-	expression tag	UNP P20839
C	521	GLU	-	expression tag	UNP P20839
C	522	ASP	-	expression tag	UNP P20839
C	523	SER	-	expression tag	UNP P20839
C	524	GLY	-	expression tag	UNP P20839
C	525	GLY	-	expression tag	UNP P20839
C	526	GLY	-	expression tag	UNP P20839
C	527	ARG	-	expression tag	UNP P20839
C	528	GLY	-	expression tag	UNP P20839
C	529	GLY	-	expression tag	UNP P20839
C	530	GLY	-	expression tag	UNP P20839
C	531	GLY	-	expression tag	UNP P20839
C	532	ASP	-	expression tag	UNP P20839
C	533	ALA	-	expression tag	UNP P20839

*Continued on next page...*

*Continued from previous page...*

Chain	Residue	Modelled	Actual	Comment	Reference
C	534	PRO	-	expression tag	UNP P20839
C	535	GLN	-	expression tag	UNP P20839
C	536	CYS	-	expression tag	UNP P20839
C	537	PRO	-	expression tag	UNP P20839
C	538	LEU	-	expression tag	UNP P20839
C	539	LEU	-	expression tag	UNP P20839
C	540	GLY	-	expression tag	UNP P20839
C	541	THR	-	expression tag	UNP P20839
C	542	ALA	-	expression tag	UNP P20839
C	543	SER	-	expression tag	UNP P20839
C	544	LEU	-	expression tag	UNP P20839
C	545	HIS	-	expression tag	UNP P20839
C	546	ASN	-	expression tag	UNP P20839
D	510	THR	-	expression tag	UNP P20839
D	511	PHE	-	expression tag	UNP P20839
D	512	LEU	-	expression tag	UNP P20839
D	513	PRO	-	expression tag	UNP P20839
D	514	PHE	-	expression tag	UNP P20839
D	515	THR	-	expression tag	UNP P20839
D	516	LYS	-	expression tag	UNP P20839
D	517	SER	-	expression tag	UNP P20839
D	518	GLY	-	expression tag	UNP P20839
D	519	CYS	-	expression tag	UNP P20839
D	520	THR	-	expression tag	UNP P20839
D	521	GLU	-	expression tag	UNP P20839
D	522	ASP	-	expression tag	UNP P20839
D	523	SER	-	expression tag	UNP P20839
D	524	GLY	-	expression tag	UNP P20839
D	525	GLY	-	expression tag	UNP P20839
D	526	GLY	-	expression tag	UNP P20839
D	527	ARG	-	expression tag	UNP P20839
D	528	GLY	-	expression tag	UNP P20839
D	529	GLY	-	expression tag	UNP P20839
D	530	GLY	-	expression tag	UNP P20839
D	531	GLY	-	expression tag	UNP P20839
D	532	ASP	-	expression tag	UNP P20839
D	533	ALA	-	expression tag	UNP P20839
D	534	PRO	-	expression tag	UNP P20839
D	535	GLN	-	expression tag	UNP P20839
D	536	CYS	-	expression tag	UNP P20839
D	537	PRO	-	expression tag	UNP P20839
D	538	LEU	-	expression tag	UNP P20839

*Continued on next page...*

*Continued from previous page...*

Chain	Residue	Modelled	Actual	Comment	Reference
D	539	LEU	-	expression tag	UNP P20839
D	540	GLY	-	expression tag	UNP P20839
D	541	THR	-	expression tag	UNP P20839
D	542	ALA	-	expression tag	UNP P20839
D	543	SER	-	expression tag	UNP P20839
D	544	LEU	-	expression tag	UNP P20839
D	545	HIS	-	expression tag	UNP P20839
D	546	ASN	-	expression tag	UNP P20839
E	510	THR	-	expression tag	UNP P20839
E	511	PHE	-	expression tag	UNP P20839
E	512	LEU	-	expression tag	UNP P20839
E	513	PRO	-	expression tag	UNP P20839
E	514	PHE	-	expression tag	UNP P20839
E	515	THR	-	expression tag	UNP P20839
E	516	LYS	-	expression tag	UNP P20839
E	517	SER	-	expression tag	UNP P20839
E	518	GLY	-	expression tag	UNP P20839
E	519	CYS	-	expression tag	UNP P20839
E	520	THR	-	expression tag	UNP P20839
E	521	GLU	-	expression tag	UNP P20839
E	522	ASP	-	expression tag	UNP P20839
E	523	SER	-	expression tag	UNP P20839
E	524	GLY	-	expression tag	UNP P20839
E	525	GLY	-	expression tag	UNP P20839
E	526	GLY	-	expression tag	UNP P20839
E	527	ARG	-	expression tag	UNP P20839
E	528	GLY	-	expression tag	UNP P20839
E	529	GLY	-	expression tag	UNP P20839
E	530	GLY	-	expression tag	UNP P20839
E	531	GLY	-	expression tag	UNP P20839
E	532	ASP	-	expression tag	UNP P20839
E	533	ALA	-	expression tag	UNP P20839
E	534	PRO	-	expression tag	UNP P20839
E	535	GLN	-	expression tag	UNP P20839
E	536	CYS	-	expression tag	UNP P20839
E	537	PRO	-	expression tag	UNP P20839
E	538	LEU	-	expression tag	UNP P20839
E	539	LEU	-	expression tag	UNP P20839
E	540	GLY	-	expression tag	UNP P20839
E	541	THR	-	expression tag	UNP P20839
E	542	ALA	-	expression tag	UNP P20839
E	543	SER	-	expression tag	UNP P20839

*Continued on next page...*

*Continued from previous page...*

Chain	Residue	Modelled	Actual	Comment	Reference
E	544	LEU	-	expression tag	UNP P20839
E	545	HIS	-	expression tag	UNP P20839
E	546	ASN	-	expression tag	UNP P20839
F	510	THR	-	expression tag	UNP P20839
F	511	PHE	-	expression tag	UNP P20839
F	512	LEU	-	expression tag	UNP P20839
F	513	PRO	-	expression tag	UNP P20839
F	514	PHE	-	expression tag	UNP P20839
F	515	THR	-	expression tag	UNP P20839
F	516	LYS	-	expression tag	UNP P20839
F	517	SER	-	expression tag	UNP P20839
F	518	GLY	-	expression tag	UNP P20839
F	519	CYS	-	expression tag	UNP P20839
F	520	THR	-	expression tag	UNP P20839
F	521	GLU	-	expression tag	UNP P20839
F	522	ASP	-	expression tag	UNP P20839
F	523	SER	-	expression tag	UNP P20839
F	524	GLY	-	expression tag	UNP P20839
F	525	GLY	-	expression tag	UNP P20839
F	526	GLY	-	expression tag	UNP P20839
F	527	ARG	-	expression tag	UNP P20839
F	528	GLY	-	expression tag	UNP P20839
F	529	GLY	-	expression tag	UNP P20839
F	530	GLY	-	expression tag	UNP P20839
F	531	GLY	-	expression tag	UNP P20839
F	532	ASP	-	expression tag	UNP P20839
F	533	ALA	-	expression tag	UNP P20839
F	534	PRO	-	expression tag	UNP P20839
F	535	GLN	-	expression tag	UNP P20839
F	536	CYS	-	expression tag	UNP P20839
F	537	PRO	-	expression tag	UNP P20839
F	538	LEU	-	expression tag	UNP P20839
F	539	LEU	-	expression tag	UNP P20839
F	540	GLY	-	expression tag	UNP P20839
F	541	THR	-	expression tag	UNP P20839
F	542	ALA	-	expression tag	UNP P20839
F	543	SER	-	expression tag	UNP P20839
F	544	LEU	-	expression tag	UNP P20839
F	545	HIS	-	expression tag	UNP P20839
F	546	ASN	-	expression tag	UNP P20839
G	510	THR	-	expression tag	UNP P20839
G	511	PHE	-	expression tag	UNP P20839

*Continued on next page...*



*Continued from previous page...*

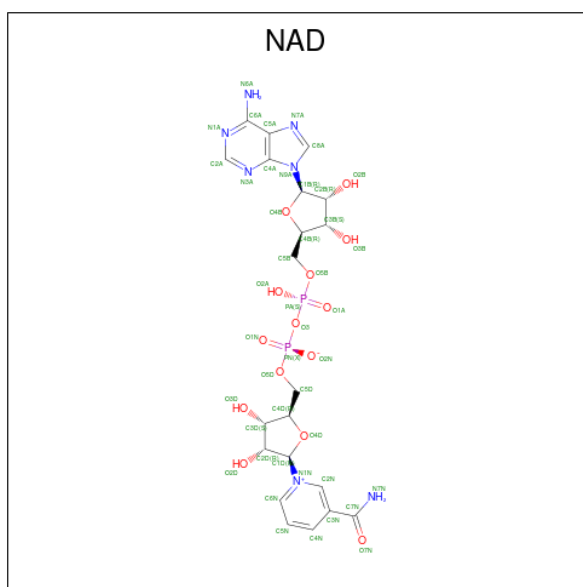
Chain	Residue	Modelled	Actual	Comment	Reference
G	512	LEU	-	expression tag	UNP P20839
G	513	PRO	-	expression tag	UNP P20839
G	514	PHE	-	expression tag	UNP P20839
G	515	THR	-	expression tag	UNP P20839
G	516	LYS	-	expression tag	UNP P20839
G	517	SER	-	expression tag	UNP P20839
G	518	GLY	-	expression tag	UNP P20839
G	519	CYS	-	expression tag	UNP P20839
G	520	THR	-	expression tag	UNP P20839
G	521	GLU	-	expression tag	UNP P20839
G	522	ASP	-	expression tag	UNP P20839
G	523	SER	-	expression tag	UNP P20839
G	524	GLY	-	expression tag	UNP P20839
G	525	GLY	-	expression tag	UNP P20839
G	526	GLY	-	expression tag	UNP P20839
G	527	ARG	-	expression tag	UNP P20839
G	528	GLY	-	expression tag	UNP P20839
G	529	GLY	-	expression tag	UNP P20839
G	530	GLY	-	expression tag	UNP P20839
G	531	GLY	-	expression tag	UNP P20839
G	532	ASP	-	expression tag	UNP P20839
G	533	ALA	-	expression tag	UNP P20839
G	534	PRO	-	expression tag	UNP P20839
G	535	GLN	-	expression tag	UNP P20839
G	536	CYS	-	expression tag	UNP P20839
G	537	PRO	-	expression tag	UNP P20839
G	538	LEU	-	expression tag	UNP P20839
G	539	LEU	-	expression tag	UNP P20839
G	540	GLY	-	expression tag	UNP P20839
G	541	THR	-	expression tag	UNP P20839
G	542	ALA	-	expression tag	UNP P20839
G	543	SER	-	expression tag	UNP P20839
G	544	LEU	-	expression tag	UNP P20839
G	545	HIS	-	expression tag	UNP P20839
G	546	ASN	-	expression tag	UNP P20839
H	510	THR	-	expression tag	UNP P20839
H	511	PHE	-	expression tag	UNP P20839
H	512	LEU	-	expression tag	UNP P20839
H	513	PRO	-	expression tag	UNP P20839
H	514	PHE	-	expression tag	UNP P20839
H	515	THR	-	expression tag	UNP P20839
H	516	LYS	-	expression tag	UNP P20839

*Continued on next page...*

*Continued from previous page...*

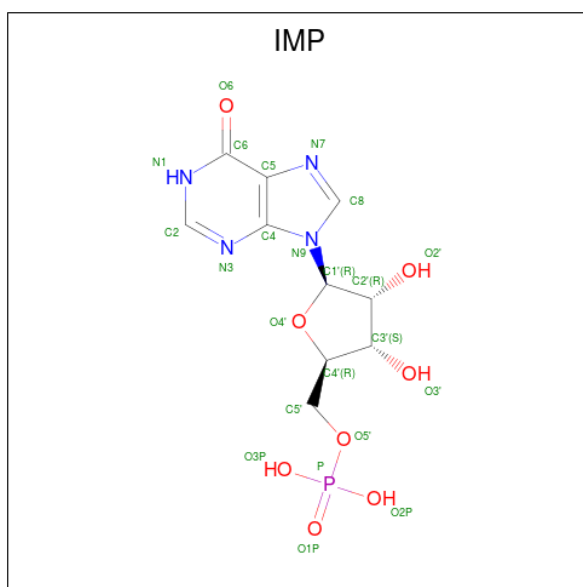
Chain	Residue	Modelled	Actual	Comment	Reference
H	517	SER	-	expression tag	UNP P20839
H	518	GLY	-	expression tag	UNP P20839
H	519	CYS	-	expression tag	UNP P20839
H	520	THR	-	expression tag	UNP P20839
H	521	GLU	-	expression tag	UNP P20839
H	522	ASP	-	expression tag	UNP P20839
H	523	SER	-	expression tag	UNP P20839
H	524	GLY	-	expression tag	UNP P20839
H	525	GLY	-	expression tag	UNP P20839
H	526	GLY	-	expression tag	UNP P20839
H	527	ARG	-	expression tag	UNP P20839
H	528	GLY	-	expression tag	UNP P20839
H	529	GLY	-	expression tag	UNP P20839
H	530	GLY	-	expression tag	UNP P20839
H	531	GLY	-	expression tag	UNP P20839
H	532	ASP	-	expression tag	UNP P20839
H	533	ALA	-	expression tag	UNP P20839
H	534	PRO	-	expression tag	UNP P20839
H	535	GLN	-	expression tag	UNP P20839
H	536	CYS	-	expression tag	UNP P20839
H	537	PRO	-	expression tag	UNP P20839
H	538	LEU	-	expression tag	UNP P20839
H	539	LEU	-	expression tag	UNP P20839
H	540	GLY	-	expression tag	UNP P20839
H	541	THR	-	expression tag	UNP P20839
H	542	ALA	-	expression tag	UNP P20839
H	543	SER	-	expression tag	UNP P20839
H	544	LEU	-	expression tag	UNP P20839
H	545	HIS	-	expression tag	UNP P20839
H	546	ASN	-	expression tag	UNP P20839

- Molecule 2 is NICOTINAMIDE-ADENINE-DINUCLEOTIDE (three-letter code: NAD) (formula: C<sub>21</sub>H<sub>27</sub>N<sub>7</sub>O<sub>14</sub>P<sub>2</sub>) (labeled as "Ligand of Interest" by depositor).



Mol	Chain	Residues	Atoms					AltConf	
			Total	C	H	N	O		P
2	A	1	Total	C	H	N	O	P	0
			70	21	26	7	14	2	
2	B	1	Total	C	H	N	O	P	0
			70	21	26	7	14	2	
2	C	1	Total	C	H	N	O	P	0
			70	21	26	7	14	2	
2	D	1	Total	C	H	N	O	P	0
			70	21	26	7	14	2	
2	E	1	Total	C	H	N	O	P	0
			70	21	26	7	14	2	
2	F	1	Total	C	H	N	O	P	0
			70	21	26	7	14	2	
2	G	1	Total	C	H	N	O	P	0
			70	21	26	7	14	2	
2	H	1	Total	C	H	N	O	P	0
			70	21	26	7	14	2	

- Molecule 3 is INOSINIC ACID (three-letter code: IMP) (formula: C<sub>10</sub>H<sub>13</sub>N<sub>4</sub>O<sub>8</sub>P) (labeled as "Ligand of Interest" by depositor).

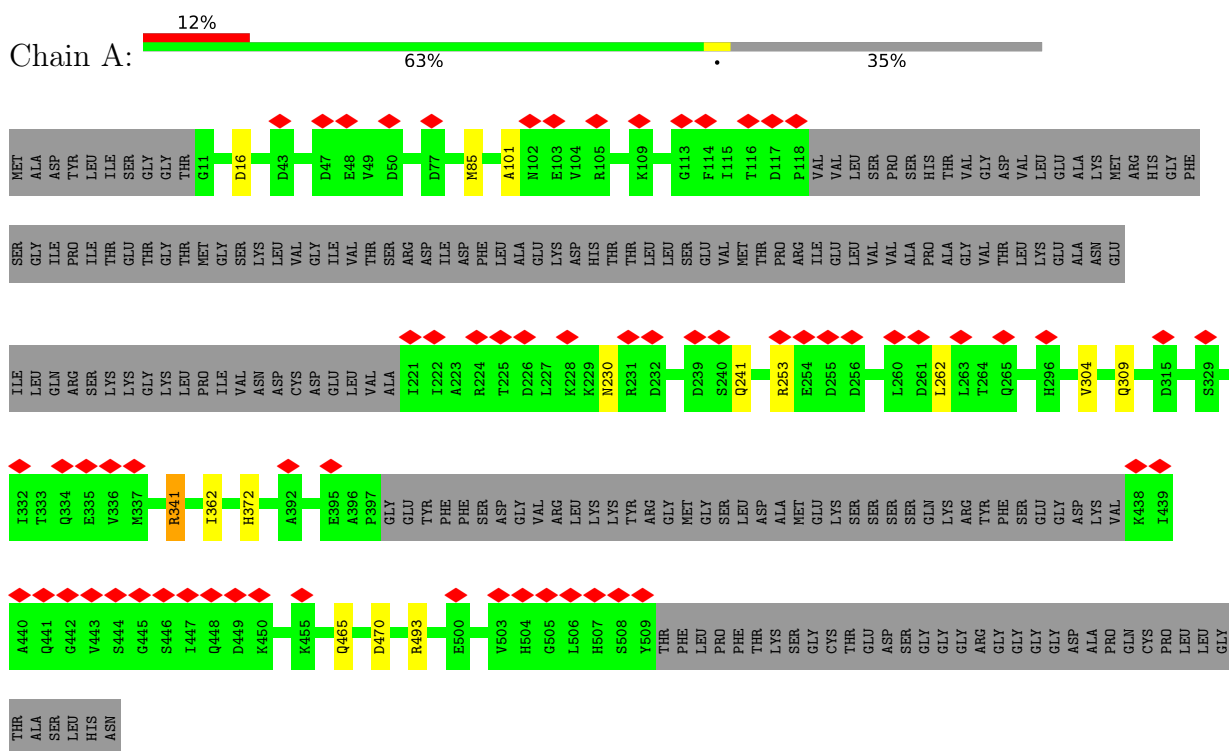


Mol	Chain	Residues	Atoms					AltConf	
			Total	C	H	N	O		P
3	A	1	Total 34	C 10	H 11	N 4	O 8	P 1	0
3	B	1	Total 34	C 10	H 11	N 4	O 8	P 1	0
3	C	1	Total 34	C 10	H 11	N 4	O 8	P 1	0
3	D	1	Total 34	C 10	H 11	N 4	O 8	P 1	0
3	E	1	Total 34	C 10	H 11	N 4	O 8	P 1	0
3	F	1	Total 34	C 10	H 11	N 4	O 8	P 1	0
3	G	1	Total 34	C 10	H 11	N 4	O 8	P 1	0
3	H	1	Total 34	C 10	H 11	N 4	O 8	P 1	0

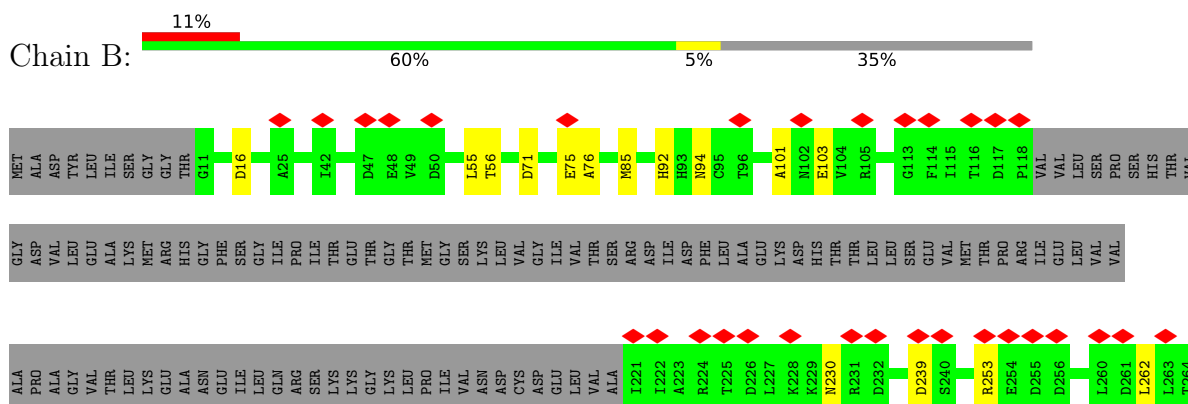
### 3 Residue-property plots

These plots are drawn for all protein, RNA, DNA and oligosaccharide chains in the entry. The first graphic for a chain summarises the proportions of the various outlier classes displayed in the second graphic. The second graphic shows the sequence view annotated by issues in geometry and atom inclusion in map density. Residues are color-coded according to the number of geometric quality criteria for which they contain at least one outlier: green = 0, yellow = 1, orange = 2 and red = 3 or more. A red diamond above a residue indicates a poor fit to the EM map for this residue (all-atom inclusion < 40%). Stretches of 2 or more consecutive residues without any outlier are shown as a green connector. Residues present in the sample, but not in the model, are shown in grey.

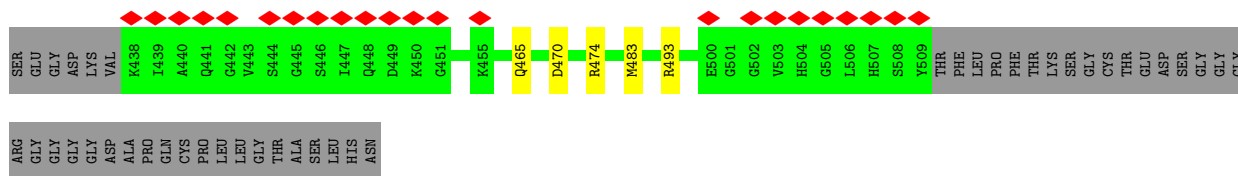
#### • Molecule 1: Inosine-5'-monophosphate dehydrogenase 1



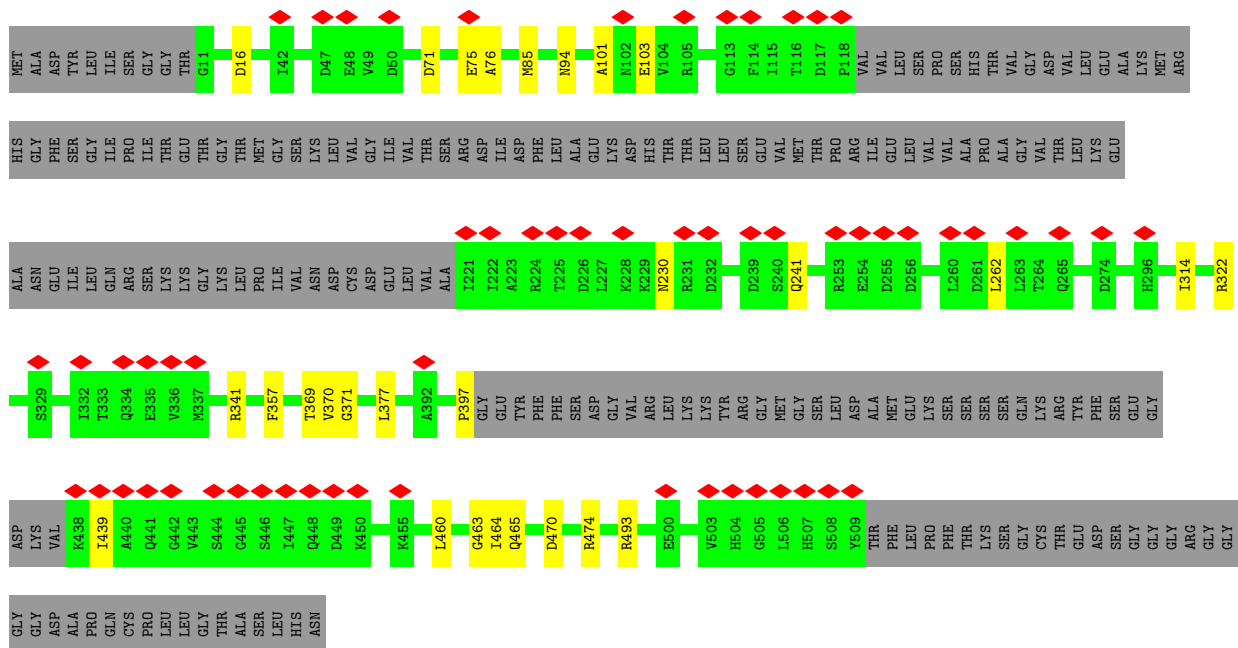
#### • Molecule 1: Inosine-5'-monophosphate dehydrogenase 1



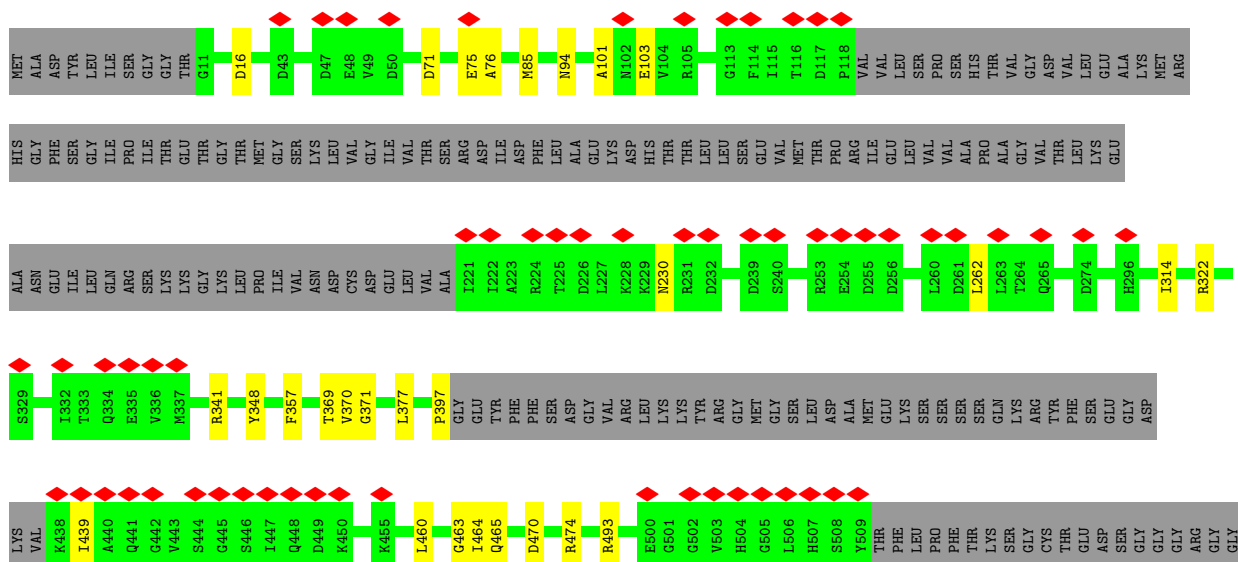




● Molecule 1: Inosine-5'-monophosphate dehydrogenase 1



● Molecule 1: Inosine-5'-monophosphate dehydrogenase 1



GLY  
GLY  
ASP  
ALA  
PRO  
GLN  
CYS  
PRO  
LEU  
LEU  
LEU  
THR  
THR  
ALA  
SER  
LEU  
HIS  
ASN

● Molecule 1: Inosine-5'-monophosphate dehydrogenase 1



MET  
ALA  
TYR  
LEU  
ILE  
SER  
GLY  
GLY  
G11  
D16  
T31  
Y32  
I42  
D47  
E48  
L55  
T56  
D71  
E75  
A76  
M85  
H92  
H93  
N94  
A101  
N102  
E103  
V104  
R105  
G113  
F114  
I115  
T116  
D117  
P118  
VAL  
VAL  
LEU  
SER  
PRO  
HIS  
THR  
HIS  
THR  
VAL  
GLY  
ASP  
VAL

LEU  
GLU  
ALA  
TYR  
GLU  
MET  
ARG  
HIS  
GLY  
PHE  
SER  
GLY  
ILE  
PRO  
ILE  
THR  
GLU  
THR  
GLY  
THR  
MET  
GLY  
SER  
LYS  
LEU  
VAL  
GLY  
ILE  
VAL  
THR  
SER  
ARG  
ASP  
ILE  
VAL  
THR  
SER  
SER  
VAL  
VAL  
HIS  
HIS  
PRO  
THR  
VAL  
ALA  
ALA

GLY  
VAL  
THR  
LEU  
LYS  
GLU  
ALA  
ASN  
LEU  
ILE  
LEU  
GLN  
ARG  
SER  
LYS  
LYS  
GLY  
LYS  
LYS  
PRO  
ILE  
LEU  
VAL  
VAL  
ALA  
I221  
I222  
A223  
R224  
T225  
D226  
L227  
K228  
R229  
N230  
R231  
D232  
D239  
S240  
R253  
E254  
D255  
D256  
L260  
D261  
L262  
T264  
Q265  
D274

H296  
I314  
R322  
S329  
I332  
T333  
Q334  
E335  
V336  
M337  
R341  
F357  
T369  
V370  
G371  
L377  
A392  
P397  
GLY  
TYR  
PHE  
PHE  
SER  
ASP  
VAL  
ARG  
LEU  
LYS  
TYR  
ARG  
MET  
GLY  
SER  
LEU  
LEU  
ALA  
MET  
GLU  
MET  
LYS  
SER  
SER  
SER  
SER  
GLN  
LYS  
ARG

TYR  
PHE  
SER  
GLY  
GLY  
ASP  
LYS  
VAL  
K438  
I439  
Q440  
Q441  
G442  
V443  
S444  
G445  
S446  
I447  
D448  
D449  
K450  
K455  
L460  
G463  
I464  
Q465  
R474  
R493  
E500  
G501  
G502  
V503  
H504  
G505  
L506  
H507  
S508  
Y509  
THR  
PHE  
LEU  
PRO  
PHE  
THR  
LYS  
SER  
SER  
SER  
GLY  
CYS  
THR  
THR  
GLU  
ASP  
SER  
GLY  
GLY

GLY  
ARG  
GLY  
GLY  
GLY  
GLY  
ASP  
ALA  
PRO  
GLN  
CYS  
PRO  
LEU  
LEU  
GLY  
THR  
ALA  
SER  
LEU  
HIS  
ASN

● Molecule 1: Inosine-5'-monophosphate dehydrogenase 1



MET  
ALA  
ASP  
TYR  
LEU  
ILE  
SER  
GLY  
GLY  
G11  
D16  
A20  
L23  
D43  
D47  
E48  
V49  
D60  
L55  
T56  
D71  
E75  
A76  
M85  
N94  
A101  
N102  
E103  
V104  
R105  
G113  
F114  
I115  
T116  
D117  
P118  
VAL  
VAL  
LEU  
SER  
PRO  
HIS  
THR  
HIS  
THR  
VAL  
GLY  
ASP

VAL  
LEU  
GLU  
ALA  
MET  
ARG  
HIS  
GLY  
PHE  
SER  
GLY  
ILE  
PRO  
ILE  
THR  
GLU  
THR  
GLY  
THR  
MET  
GLY  
SER  
LYS  
LEU  
VAL  
GLY  
ILE  
VAL  
THR  
SER  
ARG  
ASP  
ILE  
ASP  
PHE  
LEU  
ALA  
GLU  
LYS  
ASP  
HIS  
THR  
THR  
LEU  
LEU  
VAL  
THR  
SER  
SER  
SER  
SER  
VAL  
VAL  
ALA  
ALA  
PRO

ALA  
GLY  
VAL  
THR  
LEU  
LYS  
GLU  
ALA  
ASN  
GLU  
ILE  
LEU  
GLN  
ARG  
SER  
LYS  
CYS  
GLY  
LYS  
LEU  
LEU  
PRO  
ILE  
VAL  
VAL  
ALA  
I221  
I222  
A223  
R224  
T225  
D226  
L227  
K228  
R229  
N230  
R231  
D232  
D239  
S240  
Q241  
R253  
E254  
D255  
D256  
L260  
D261  
L262  
T264  
Q265

D274  
H296  
I314  
R322  
S329  
I332  
T333  
Q334  
E335  
V336  
M337  
R341  
A346  
F357  
T369  
V370  
G371  
A392  
P397  
GLY  
TYR  
PHE  
PHE  
SER  
ASP  
VAL  
ARG  
LEU  
LYS  
TYR  
ARG  
MET  
GLY  
SER  
LEU  
LEU  
ALA  
MET  
GLU  
MET  
LYS  
SER  
SER  
SER  
SER  
GLN

LYS  
ARG  
TYR  
PHE  
SER  
GLY  
GLY  
ASP  
LYS  
VAL  
K438  
I439  
Q440  
Q441  
G442  
V443  
S444  
G445  
S446  
I447  
D448  
D449  
K450  
K455  
L460  
G463  
I464  
Q465  
D470  
R474  
M483  
R493  
E500  
G501  
G502  
V503  
H504  
G505  
L506  
H507  
S508  
Y509  
THR  
PHE  
LEU  
PRO  
PHE  
SER  
SER  
SER  
GLN

THR  
GLU  
ASP  
SER  
GLY  
GLY  
ARG  
GLY  
GLY  
GLY  
GLY  
ASP  
ALA  
PRO  
GLN  
CYS  
PRO  
LYS  
LEU  
LEU  
LEU  
GLY  
THR  
ALA  
SER  
SER  
HIS  
ASN



## 4 Experimental information

Property	Value	Source
EM reconstruction method	SINGLE PARTICLE	Depositor
Imposed symmetry	POINT, Not provided	
Number of particles used	66449	Depositor
Resolution determination method	FSC 0.143 CUT-OFF	Depositor
CTF correction method	PHASE FLIPPING AND AMPLITUDE CORRECTION	Depositor
Microscope	FEI TITAN KRIOS	Depositor
Voltage (kV)	300	Depositor
Electron dose ( $e^-/\text{\AA}^2$ )	50	Depositor
Minimum defocus (nm)	Not provided	
Maximum defocus (nm)	Not provided	
Magnification	Not provided	
Image detector	GATAN K2 SUMMIT (4k x 4k)	Depositor
Maximum map value	10.358	Depositor
Minimum map value	-7.982	Depositor
Average map value	-0.000	Depositor
Map value standard deviation	0.198	Depositor
Recommended contour level	1.57	Depositor
Map size (Å)	371.19998, 371.19998, 371.19998	wwPDB
Map dimensions	320, 320, 320	wwPDB
Map angles (°)	90.0, 90.0, 90.0	wwPDB
Pixel spacing (Å)	1.16, 1.16, 1.16	Depositor

## 5 Model quality [i](#)

### 5.1 Standard geometry [i](#)

Bond lengths and bond angles in the following residue types are not validated in this section: NAD, IMP

The Z score for a bond length (or angle) is the number of standard deviations the observed value is removed from the expected value. A bond length (or angle) with  $|Z| > 5$  is considered an outlier worth inspection. RMSZ is the root-mean-square of all Z scores of the bond lengths (or angles).

Mol	Chain	Bond lengths		Bond angles	
		RMSZ	# Z  >5	RMSZ	# Z  >5
1	A	0.54	0/2718	0.92	3/3670 (0.1%)
1	B	0.53	0/2718	0.89	5/3670 (0.1%)
1	C	0.55	0/2718	0.94	6/3670 (0.2%)
1	D	0.54	0/2718	0.90	5/3670 (0.1%)
1	E	0.53	0/2718	0.87	4/3670 (0.1%)
1	F	0.54	0/2718	0.88	4/3670 (0.1%)
1	G	0.54	0/2718	0.88	4/3670 (0.1%)
1	H	0.53	0/2718	0.86	6/3670 (0.2%)
All	All	0.54	0/21744	0.89	37/29360 (0.1%)

Chiral center outliers are detected by calculating the chiral volume of a chiral center and verifying if the center is modelled as a planar moiety or with the opposite hand. A planarity outlier is detected by checking planarity of atoms in a peptide group, atoms in a mainchain group or atoms of a sidechain that are expected to be planar.

Mol	Chain	#Chirality outliers	#Planarity outliers
1	A	0	1
1	F	0	1
1	G	0	1
All	All	0	3

There are no bond length outliers.

The worst 5 of 37 bond angle outliers are listed below:

Mol	Chain	Res	Type	Atoms	Z	Observed(°)	Ideal(°)
1	A	341	ARG	NE-CZ-NH1	10.69	125.64	120.30
1	D	341	ARG	NE-CZ-NH1	10.09	125.34	120.30
1	H	341	ARG	NE-CZ-NH1	9.53	125.07	120.30
1	E	341	ARG	NE-CZ-NH1	9.42	125.01	120.30
1	B	341	ARG	NE-CZ-NH1	9.41	125.01	120.30

There are no chirality outliers.

All (3) planarity outliers are listed below:

Mol	Chain	Res	Type	Group
1	A	341	ARG	Sidechain
1	F	348	TYR	Sidechain
1	G	341	ARG	Sidechain

## 5.2 Too-close contacts [i](#)

In the following table, the Non-H and H(model) columns list the number of non-hydrogen atoms and hydrogen atoms in the chain respectively. The H(added) column lists the number of hydrogen atoms added and optimized by MolProbity. The Clashes column lists the number of clashes within the asymmetric unit, whereas Symm-Clashes lists symmetry-related clashes.

Mol	Chain	Non-H	H(model)	H(added)	Clashes	Symm-Clashes
1	A	2678	2719	2715	2	0
1	B	2678	2719	2715	10	0
1	C	2678	2719	2715	5	0
1	D	2678	2719	2715	8	0
1	E	2678	2719	2715	11	0
1	F	2678	2719	2715	11	0
1	G	2678	2719	2715	13	0
1	H	2678	2719	2715	14	0
2	A	44	26	26	0	0
2	B	44	26	26	0	0
2	C	44	26	26	0	0
2	D	44	26	26	0	0
2	E	44	26	26	0	0
2	F	44	26	26	0	0
2	G	44	26	26	0	0
2	H	44	26	26	0	0
3	A	23	11	11	0	0
3	B	23	11	11	0	0
3	C	23	11	11	0	0
3	D	23	11	11	0	0
3	E	23	11	11	0	0
3	F	23	11	11	0	0
3	G	23	11	11	0	0
3	H	23	11	11	0	0
All	All	21960	22048	22016	69	0

The all-atom clashscore is defined as the number of clashes found per 1000 atoms (including hydrogen atoms). The all-atom clashscore for this structure is 2.

The worst 5 of 69 close contacts within the same asymmetric unit are listed below, sorted by their clash magnitude.

Atom-1	Atom-2	Interatomic distance (Å)	Clash overlap (Å)
1:D:75:GLU:HB2	1:D:397:PRO:HG3	1.73	0.70
1:H:75:GLU:HB2	1:H:397:PRO:HG3	1.73	0.70
1:B:75:GLU:HB2	1:B:397:PRO:HG3	1.73	0.70
1:F:75:GLU:HB2	1:F:397:PRO:HG3	1.73	0.70
1:E:75:GLU:HB2	1:E:397:PRO:HG3	1.73	0.69

There are no symmetry-related clashes.

## 5.3 Torsion angles [i](#)

### 5.3.1 Protein backbone [i](#)

In the following table, the Percentiles column shows the percent Ramachandran outliers of the chain as a percentile score with respect to all PDB entries followed by that with respect to all EM entries.

The Analysed column shows the number of residues for which the backbone conformation was analysed, and the total number of residues.

Mol	Chain	Analysed	Favoured	Allowed	Outliers	Percentiles	
1	A	351/546 (64%)	332 (95%)	18 (5%)	1 (0%)	41	75
1	B	351/546 (64%)	328 (93%)	23 (7%)	0	100	100
1	C	351/546 (64%)	330 (94%)	21 (6%)	0	100	100
1	D	351/546 (64%)	330 (94%)	20 (6%)	1 (0%)	41	75
1	E	351/546 (64%)	330 (94%)	20 (6%)	1 (0%)	41	75
1	F	351/546 (64%)	331 (94%)	20 (6%)	0	100	100
1	G	351/546 (64%)	328 (93%)	23 (7%)	0	100	100
1	H	351/546 (64%)	324 (92%)	26 (7%)	1 (0%)	41	75
All	All	2808/4368 (64%)	2633 (94%)	171 (6%)	4 (0%)	54	83

All (4) Ramachandran outliers are listed below:

Mol	Chain	Res	Type
1	D	241	GLN
1	H	241	GLN
1	A	241	GLN

*Continued on next page...*

*Continued from previous page...*

Mol	Chain	Res	Type
1	E	241	GLN

### 5.3.2 Protein sidechains [i](#)

In the following table, the Percentiles column shows the percent sidechain outliers of the chain as a percentile score with respect to all PDB entries followed by that with respect to all EM entries.

The Analysed column shows the number of residues for which the sidechain conformation was analysed, and the total number of residues.

Mol	Chain	Analysed	Rotameric	Outliers	Percentiles
1	A	285/440 (65%)	278 (98%)	7 (2%)	47 75
1	B	285/440 (65%)	278 (98%)	7 (2%)	47 75
1	C	285/440 (65%)	276 (97%)	9 (3%)	39 70
1	D	285/440 (65%)	278 (98%)	7 (2%)	47 75
1	E	285/440 (65%)	280 (98%)	5 (2%)	59 81
1	F	285/440 (65%)	280 (98%)	5 (2%)	59 81
1	G	285/440 (65%)	279 (98%)	6 (2%)	53 78
1	H	285/440 (65%)	280 (98%)	5 (2%)	59 81
All	All	2280/3520 (65%)	2229 (98%)	51 (2%)	54 77

5 of 51 residues with a non-rotameric sidechain are listed below:

Mol	Chain	Res	Type
1	D	465	GLN
1	F	16	ASP
1	H	465	GLN
1	D	470	ASP
1	E	230	ASN

Sometimes sidechains can be flipped to improve hydrogen bonding and reduce clashes. There are no such sidechains identified.

### 5.3.3 RNA [i](#)

There are no RNA molecules in this entry.

## 5.4 Non-standard residues in protein, DNA, RNA chains [i](#)

There are no non-standard protein/DNA/RNA residues in this entry.

## 5.5 Carbohydrates [i](#)

There are no monosaccharides in this entry.

## 5.6 Ligand geometry [i](#)

16 ligands are modelled in this entry.

In the following table, the Counts columns list the number of bonds (or angles) for which Mogul statistics could be retrieved, the number of bonds (or angles) that are observed in the model and the number of bonds (or angles) that are defined in the Chemical Component Dictionary. The Link column lists molecule types, if any, to which the group is linked. The Z score for a bond length (or angle) is the number of standard deviations the observed value is removed from the expected value. A bond length (or angle) with  $|Z| > 2$  is considered an outlier worth inspection. RMSZ is the root-mean-square of all Z scores of the bond lengths (or angles).

Mol	Type	Chain	Res	Link	Bond lengths			Bond angles		
					Counts	RMSZ	# Z  > 2	Counts	RMSZ	# Z  > 2
3	IMP	D	601	-	21,25,25	1.17	3 (14%)	24,38,38	0.90	0
2	NAD	C	600	-	42,48,48	1.29	2 (4%)	50,73,73	1.27	5 (10%)
2	NAD	E	600	-	42,48,48	1.30	2 (4%)	50,73,73	1.26	4 (8%)
3	IMP	B	601	-	21,25,25	1.21	3 (14%)	24,38,38	0.94	1 (4%)
3	IMP	H	601	-	21,25,25	1.26	3 (14%)	24,38,38	1.06	2 (8%)
2	NAD	A	600	-	42,48,48	1.27	2 (4%)	50,73,73	1.23	4 (8%)
3	IMP	F	601	-	21,25,25	1.21	3 (14%)	24,38,38	0.93	1 (4%)
3	IMP	E	601	-	21,25,25	1.25	3 (14%)	24,38,38	1.05	2 (8%)
2	NAD	G	600	-	42,48,48	1.30	2 (4%)	50,73,73	1.23	4 (8%)
2	NAD	F	600	-	42,48,48	1.29	1 (2%)	50,73,73	1.29	5 (10%)
3	IMP	C	601	-	21,25,25	1.16	3 (14%)	24,38,38	0.92	0
2	NAD	H	600	-	42,48,48	1.30	2 (4%)	50,73,73	1.26	4 (8%)
2	NAD	B	600	-	42,48,48	1.31	1 (2%)	50,73,73	1.29	4 (8%)
3	IMP	A	601	-	21,25,25	1.07	2 (9%)	24,38,38	1.15	1 (4%)
3	IMP	G	601	-	21,25,25	1.26	3 (14%)	24,38,38	1.03	2 (8%)
2	NAD	D	600	-	42,48,48	1.29	1 (2%)	50,73,73	1.17	3 (6%)

In the following table, the Chirals column lists the number of chiral outliers, the number of chiral centers analysed, the number of these observed in the model and the number defined in the

Chemical Component Dictionary. Similar counts are reported in the Torsion and Rings columns. '-' means no outliers of that kind were identified.

Mol	Type	Chain	Res	Link	Chirals	Torsions	Rings
3	IMP	D	601	-	-	1/6/26/26	0/3/3/3
2	NAD	C	600	-	-	4/26/62/62	0/5/5/5
2	NAD	E	600	-	-	5/26/62/62	0/5/5/5
3	IMP	B	601	-	-	0/6/26/26	0/3/3/3
3	IMP	H	601	-	-	3/6/26/26	0/3/3/3
2	NAD	A	600	-	-	5/26/62/62	0/5/5/5
3	IMP	F	601	-	-	0/6/26/26	0/3/3/3
3	IMP	E	601	-	-	3/6/26/26	0/3/3/3
2	NAD	G	600	-	-	4/26/62/62	0/5/5/5
2	NAD	F	600	-	-	1/26/62/62	0/5/5/5
3	IMP	C	601	-	-	1/6/26/26	0/3/3/3
2	NAD	H	600	-	-	4/26/62/62	0/5/5/5
2	NAD	B	600	-	-	4/26/62/62	0/5/5/5
3	IMP	A	601	-	-	1/6/26/26	0/3/3/3
3	IMP	G	601	-	-	3/6/26/26	0/3/3/3
2	NAD	D	600	-	-	4/26/62/62	0/5/5/5

The worst 5 of 36 bond length outliers are listed below:

Mol	Chain	Res	Type	Atoms	Z	Observed(Å)	Ideal(Å)
2	B	600	NAD	C3N-C7N	-6.44	1.40	1.50
2	E	600	NAD	C3N-C7N	-6.36	1.41	1.50
2	H	600	NAD	C3N-C7N	-6.31	1.41	1.50
2	D	600	NAD	C3N-C7N	-6.29	1.41	1.50
2	G	600	NAD	C3N-C7N	-6.27	1.41	1.50

The worst 5 of 42 bond angle outliers are listed below:

Mol	Chain	Res	Type	Atoms	Z	Observed(°)	Ideal(°)
2	B	600	NAD	PN-O3-PA	-4.95	115.83	132.83
2	C	600	NAD	PN-O3-PA	-4.90	116.03	132.83
2	G	600	NAD	PN-O3-PA	-4.89	116.04	132.83
2	H	600	NAD	PN-O3-PA	-4.88	116.08	132.83
2	A	600	NAD	PN-O3-PA	-4.84	116.23	132.83

There are no chirality outliers.

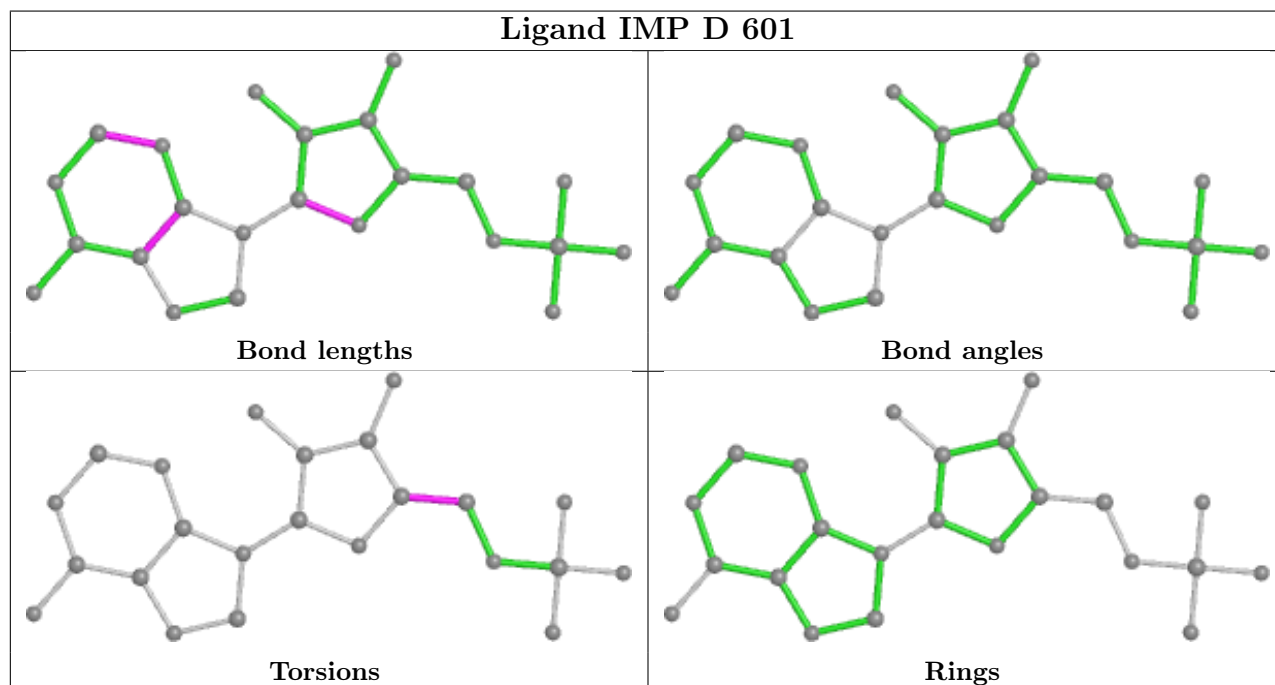
5 of 43 torsion outliers are listed below:

Mol	Chain	Res	Type	Atoms
2	A	600	NAD	PA-O3-PN-O5D
2	A	600	NAD	C5D-O5D-PN-O3
2	A	600	NAD	C5D-O5D-PN-O1N
2	B	600	NAD	C5D-O5D-PN-O1N
2	C	600	NAD	C5D-O5D-PN-O1N

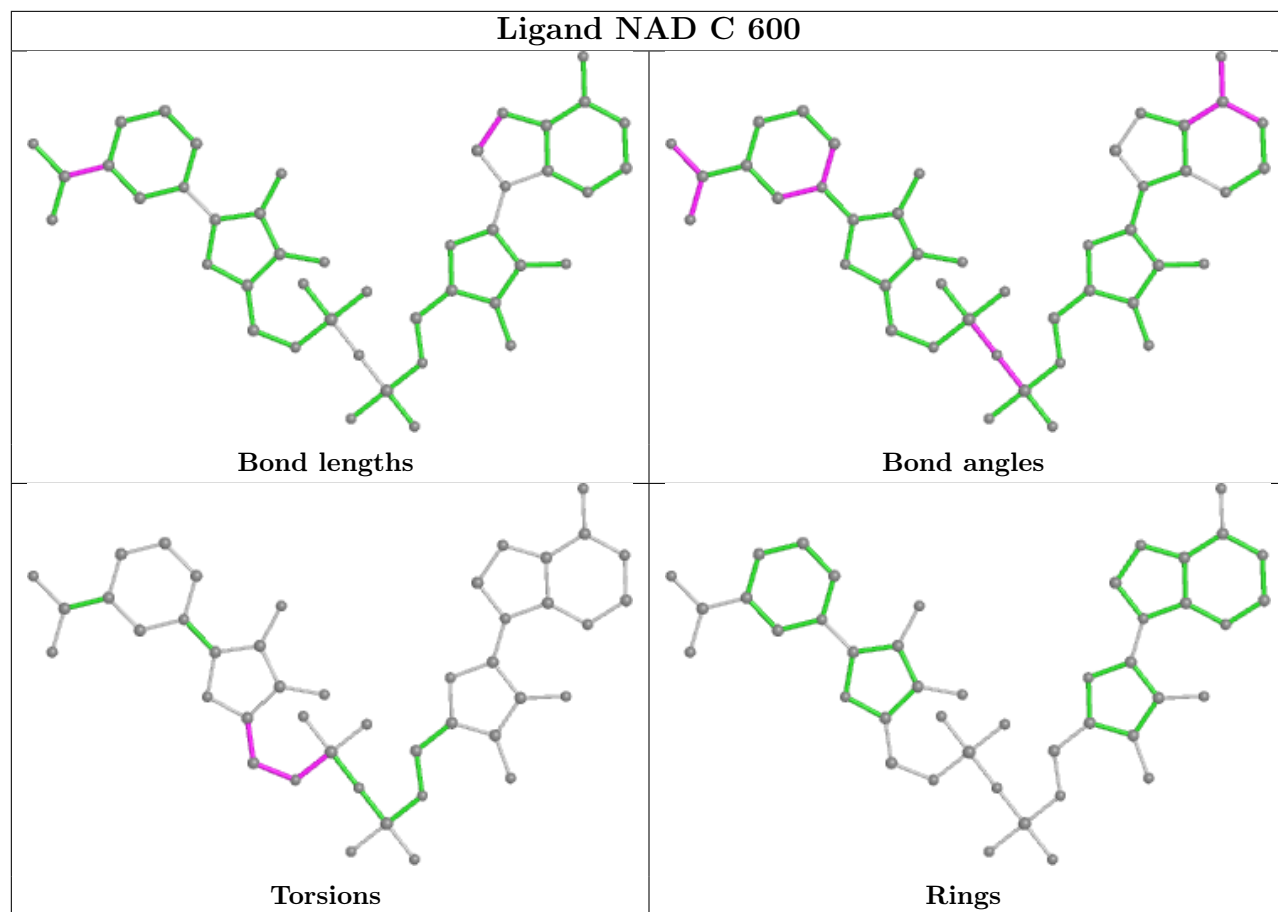
There are no ring outliers.

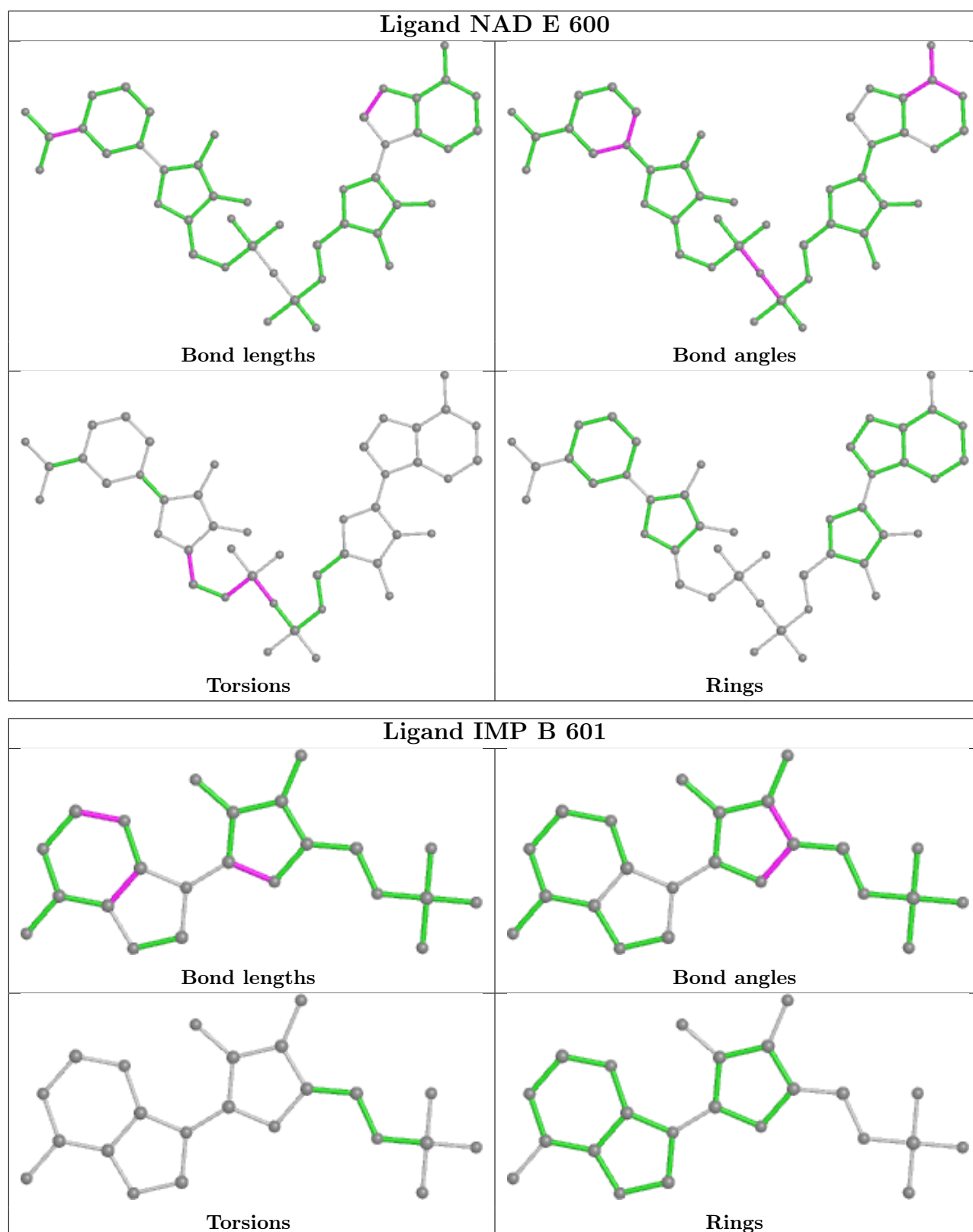
No monomer is involved in short contacts.

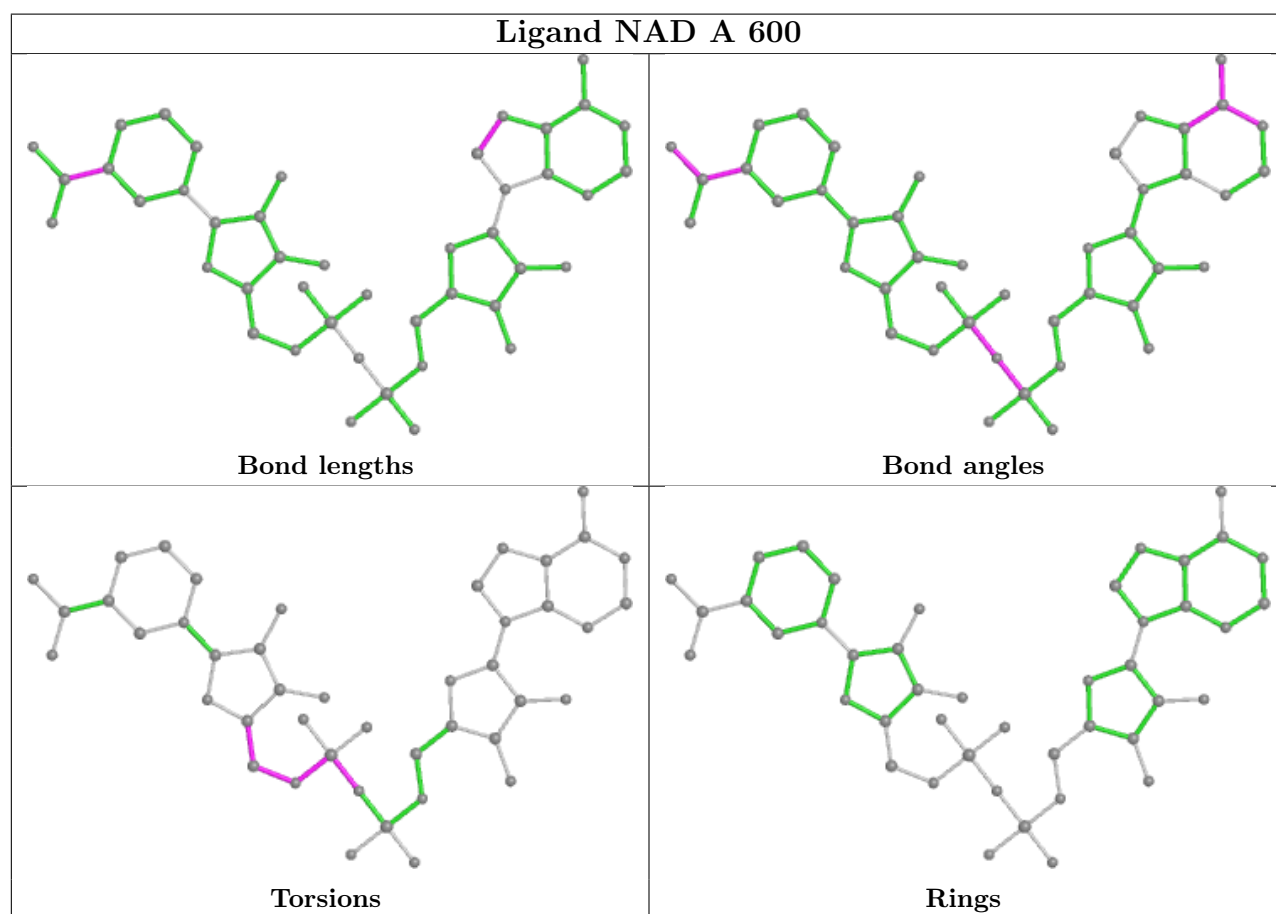
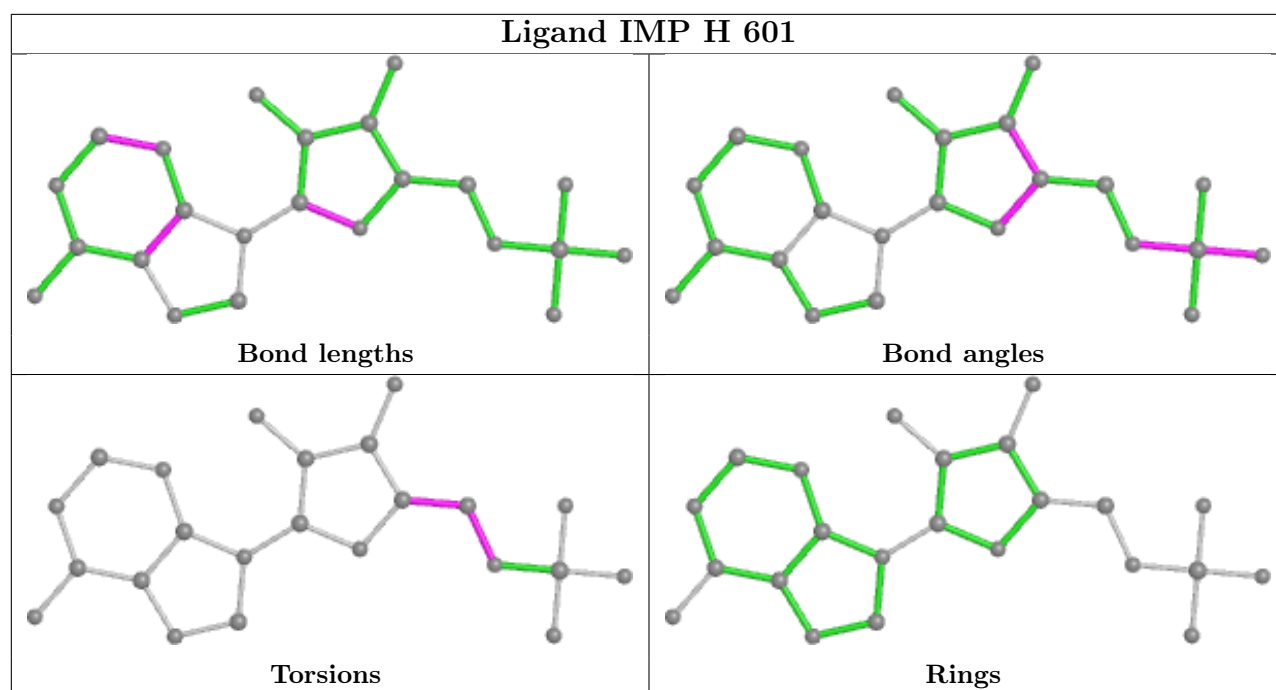
The following is a two-dimensional graphical depiction of Mogul quality analysis of bond lengths, bond angles, torsion angles, and ring geometry for all instances of the Ligand of Interest. In addition, ligands with molecular weight > 250 and outliers as shown on the validation Tables will also be included. For torsion angles, if less than 5% of the Mogul distribution of torsion angles is within 10 degrees of the torsion angle in question, then that torsion angle is considered an outlier. Any bond that is central to one or more torsion angles identified as an outlier by Mogul will be highlighted in the graph. For rings, the root-mean-square deviation (RMSD) between the ring in question and similar rings identified by Mogul is calculated over all ring torsion angles. If the average RMSD is greater than 60 degrees and the minimal RMSD between the ring in question and any Mogul-identified rings is also greater than 60 degrees, then that ring is considered an outlier. The outliers are highlighted in purple. The color gray indicates Mogul did not find sufficient equivalents in the CSD to analyse the geometry.

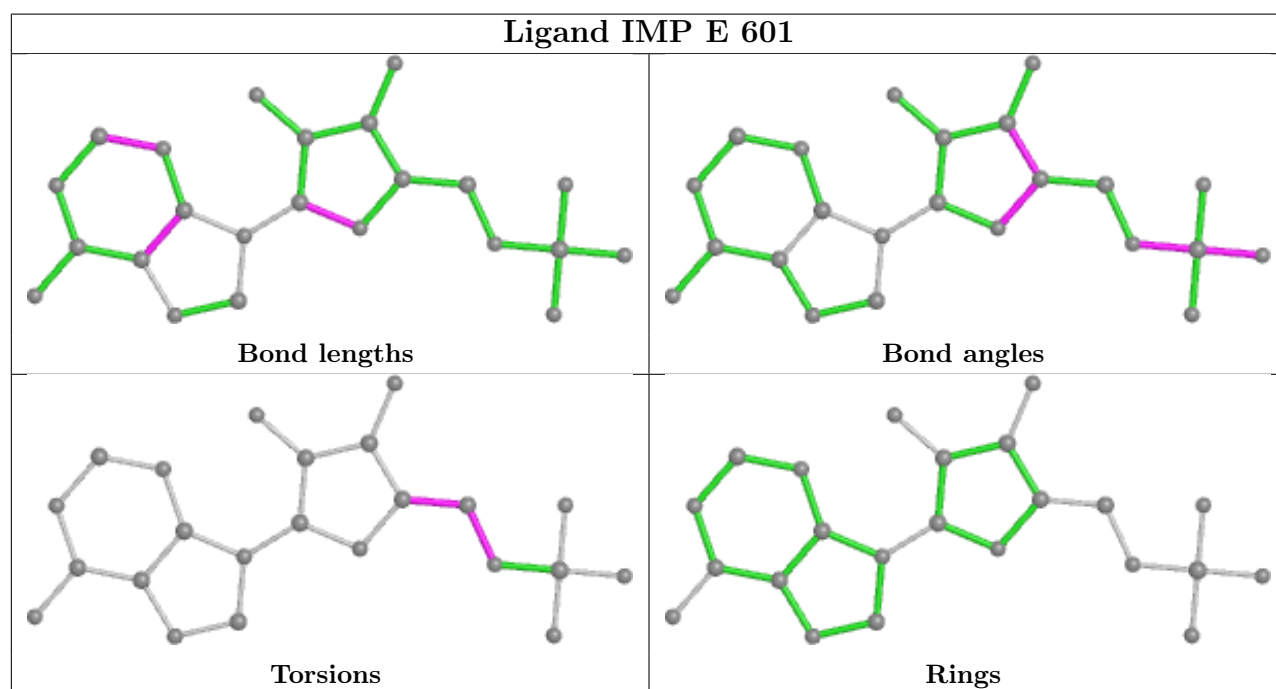
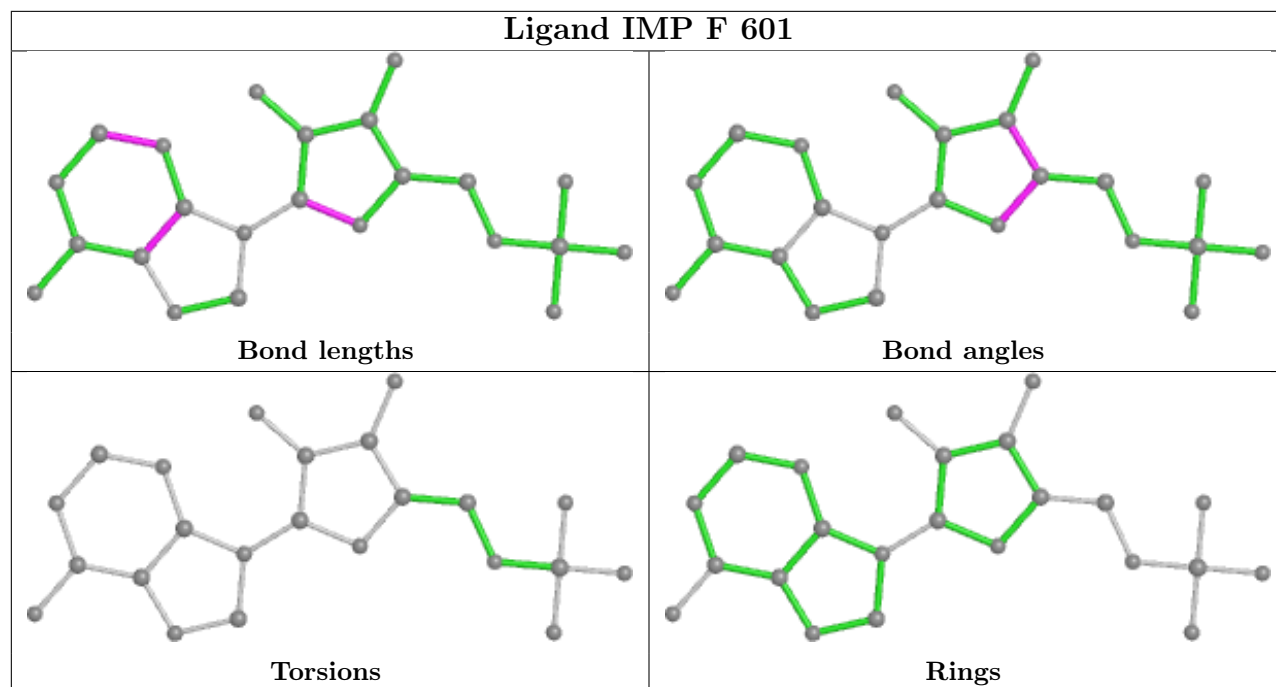


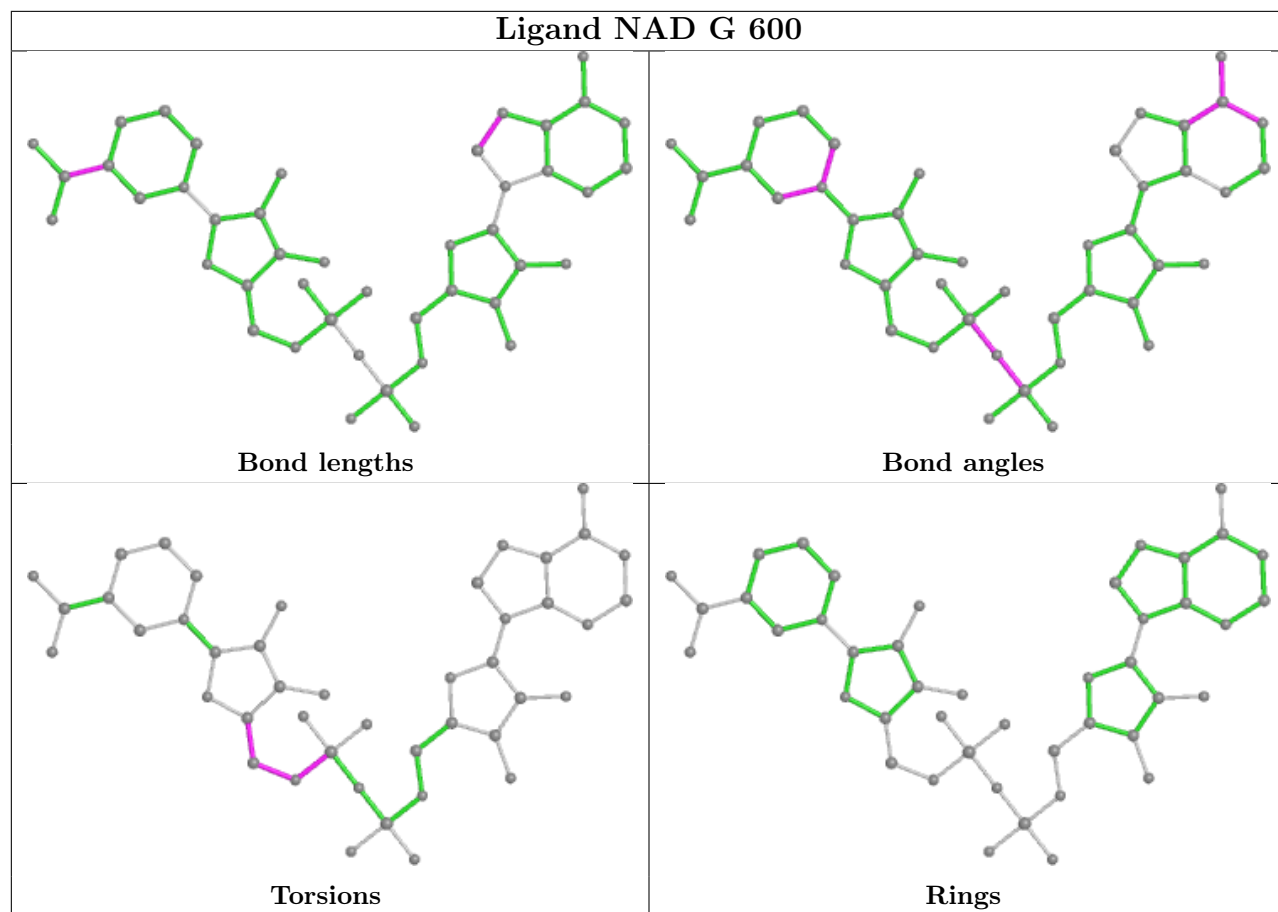


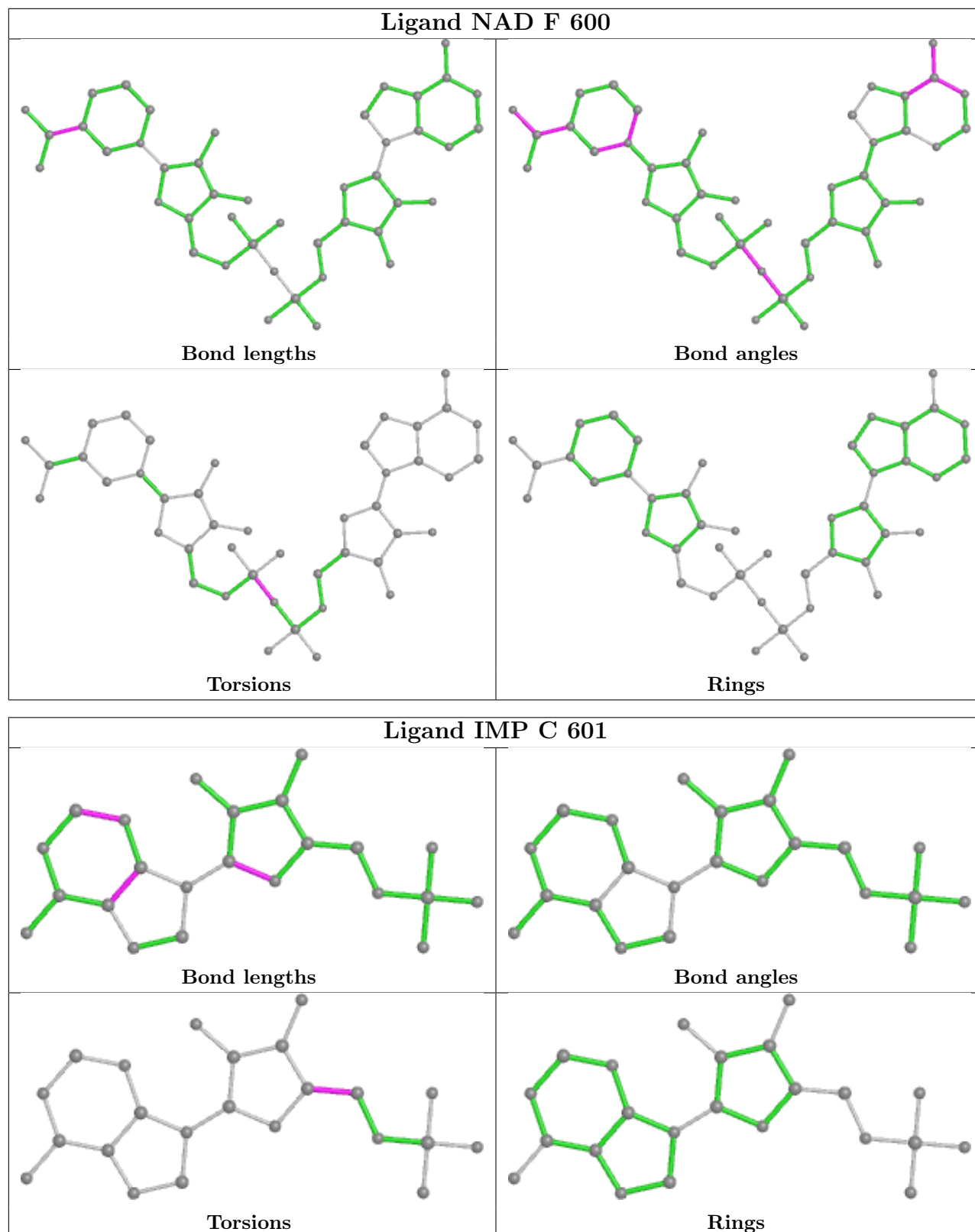


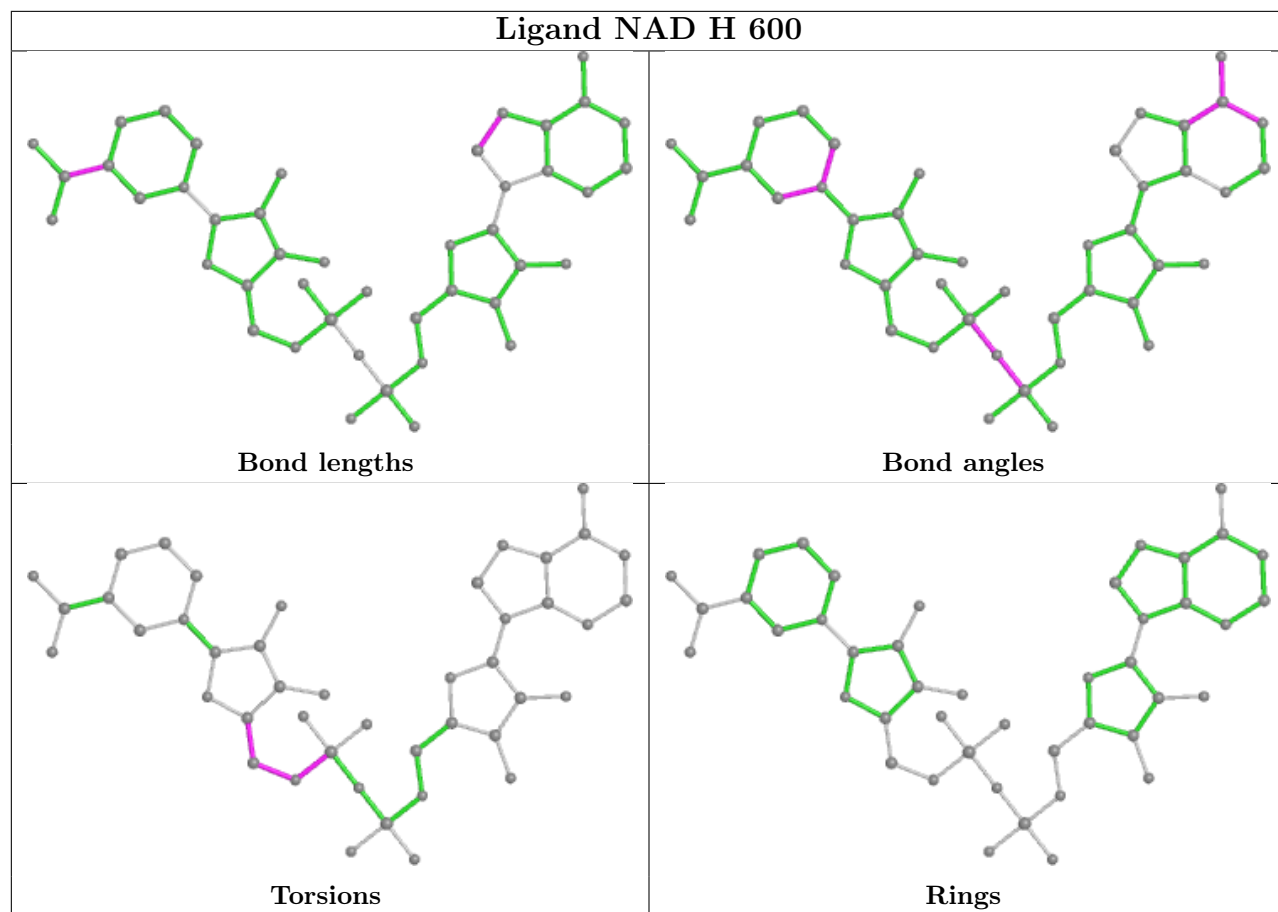


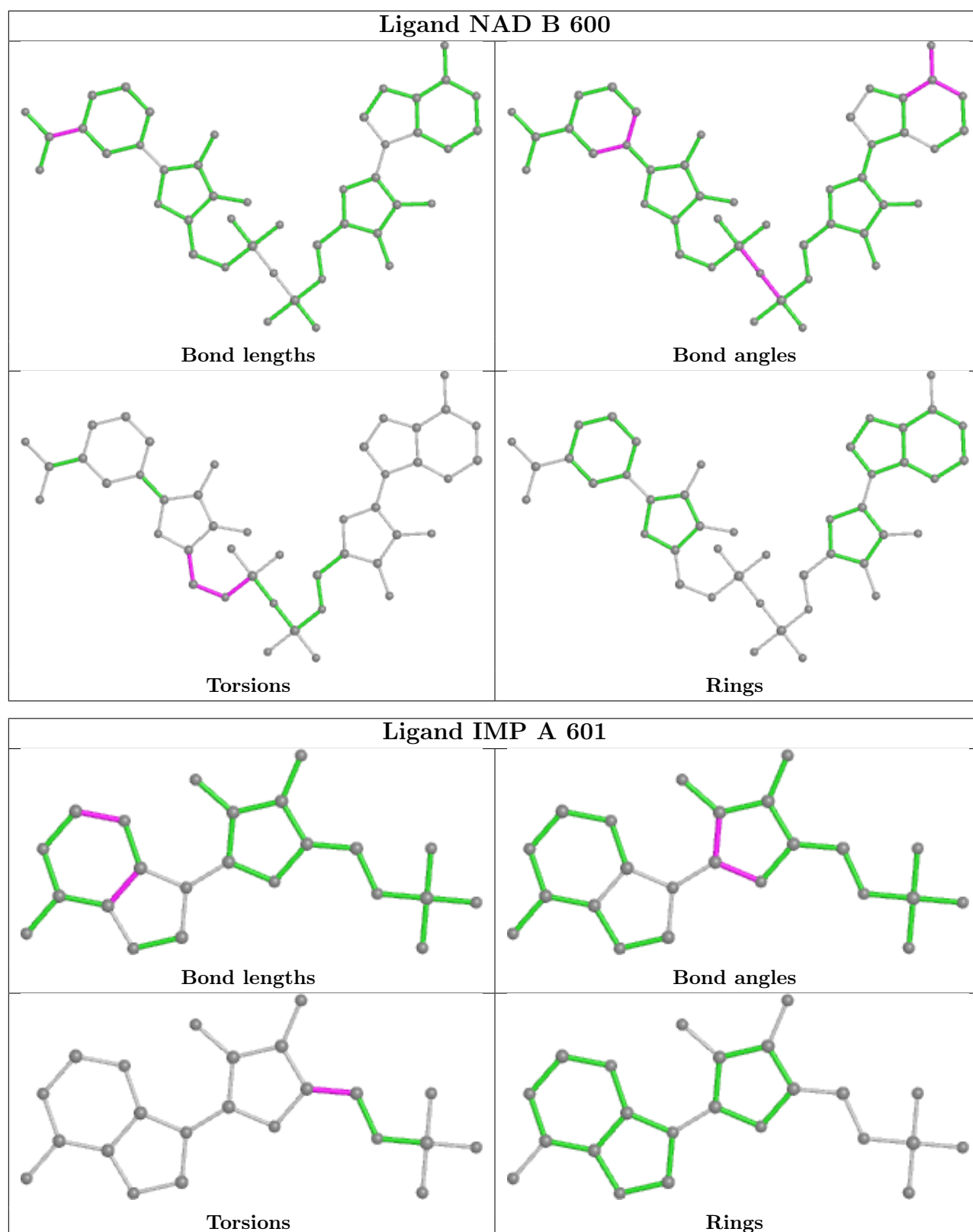




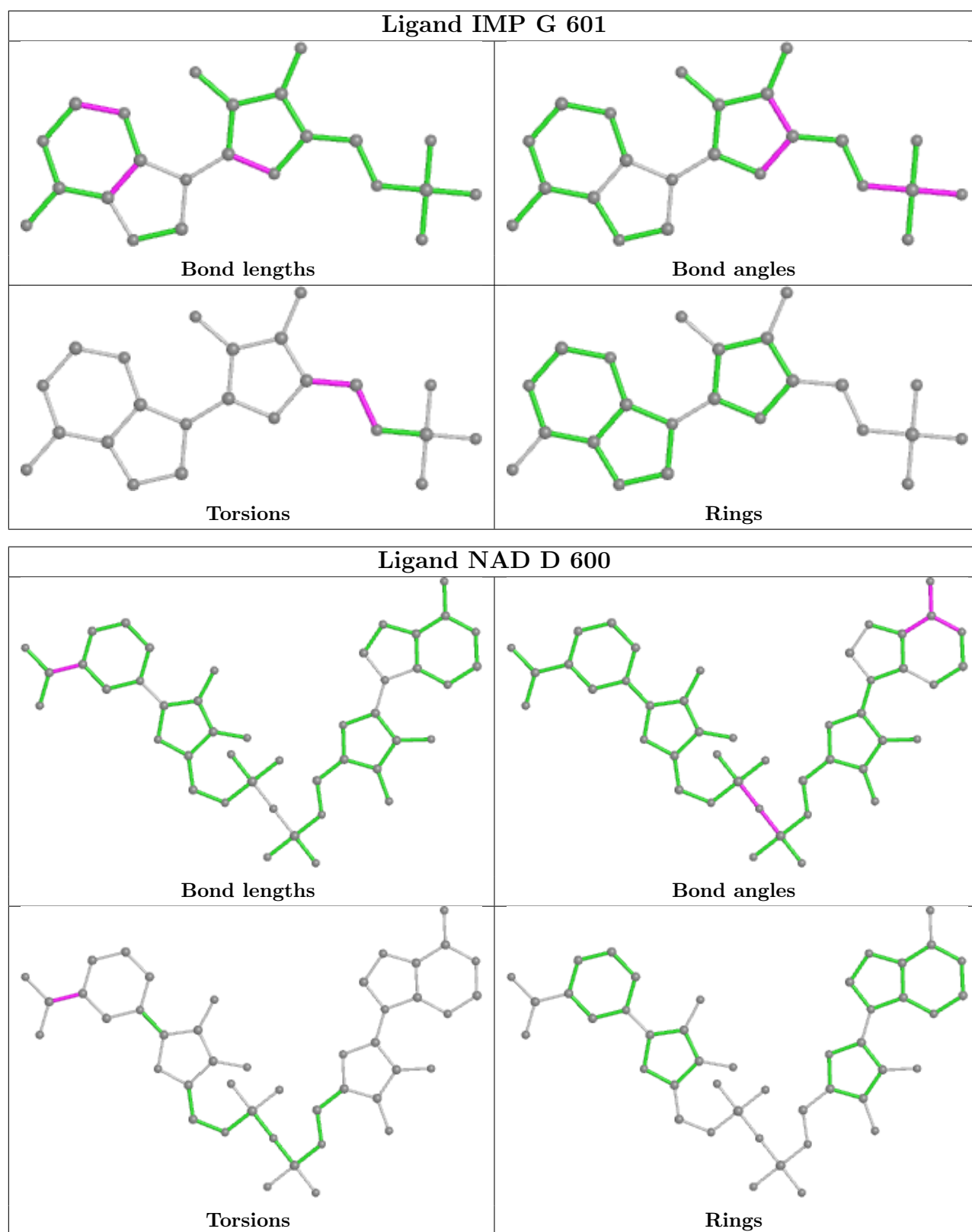












## 5.7 Other polymers [\(i\)](#)

There are no such residues in this entry.

## 5.8 Polymer linkage issues

There are no chain breaks in this entry.

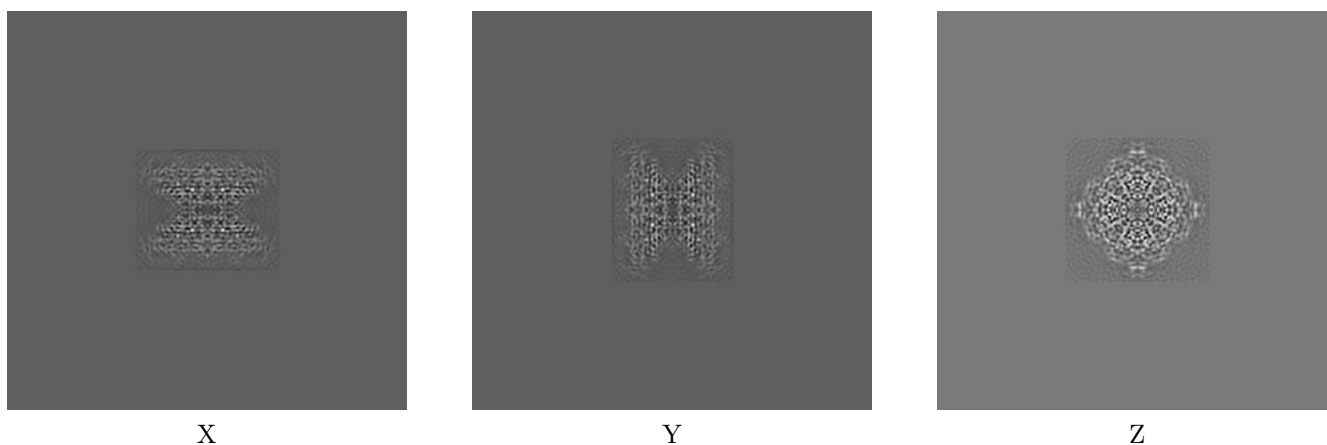
## 6 Map visualisation [i](#)

This section contains visualisations of the EMDB entry EMD-24450. These allow visual inspection of the internal detail of the map and identification of artifacts.

No raw map or half-maps were deposited for this entry and therefore no images, graphs, etc. pertaining to the raw map can be shown.

### 6.1 Orthogonal projections [i](#)

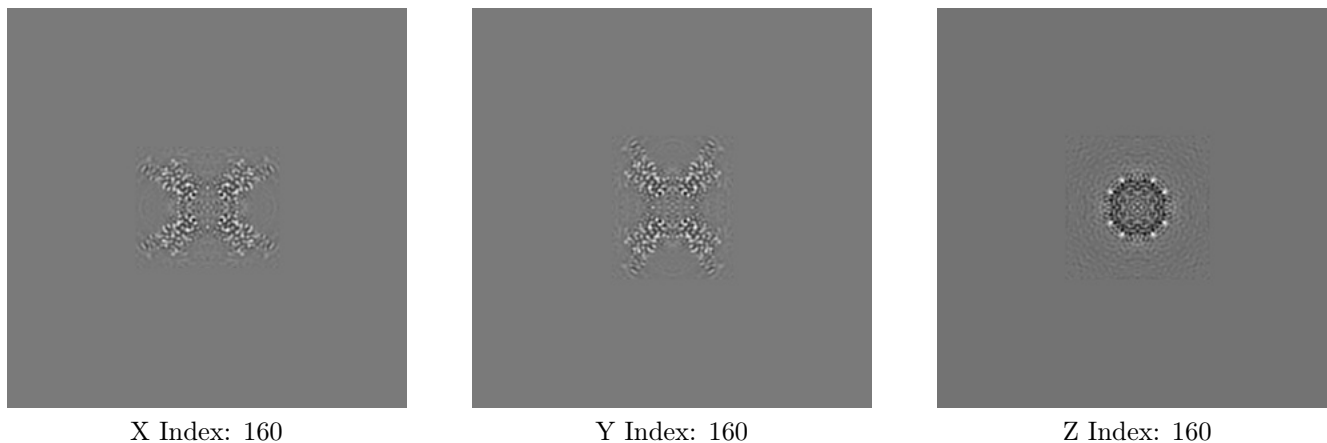
#### 6.1.1 Primary map



The images above show the map projected in three orthogonal directions.

### 6.2 Central slices [i](#)

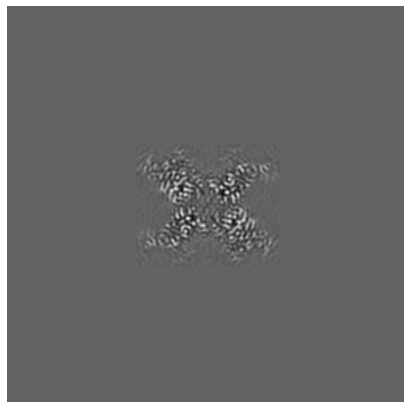
#### 6.2.1 Primary map



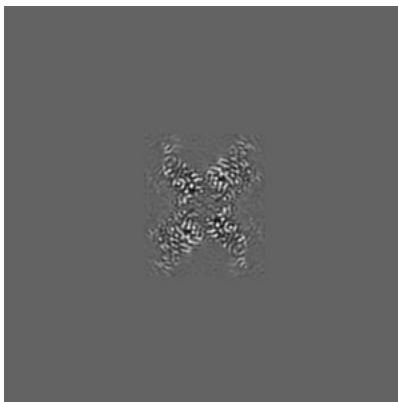
The images above show central slices of the map in three orthogonal directions.

## 6.3 Largest variance slices [i](#)

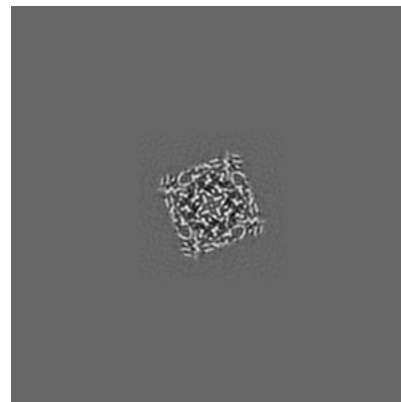
### 6.3.1 Primary map



X Index: 165



Y Index: 165

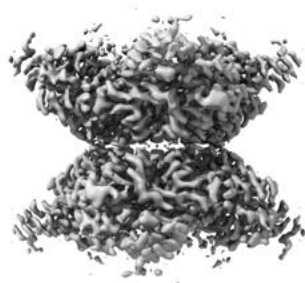


Z Index: 144

The images above show the largest variance slices of the map in three orthogonal directions.

## 6.4 Orthogonal surface views [i](#)

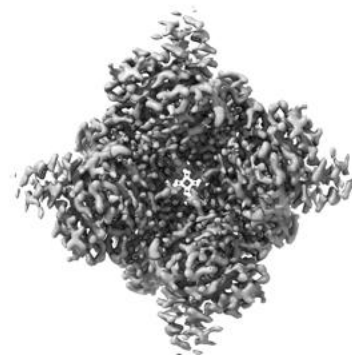
### 6.4.1 Primary map



X



Y



Z

The images above show the 3D surface view of the map at the recommended contour level 1.57. These images, in conjunction with the slice images, may facilitate assessment of whether an appropriate contour level has been provided.

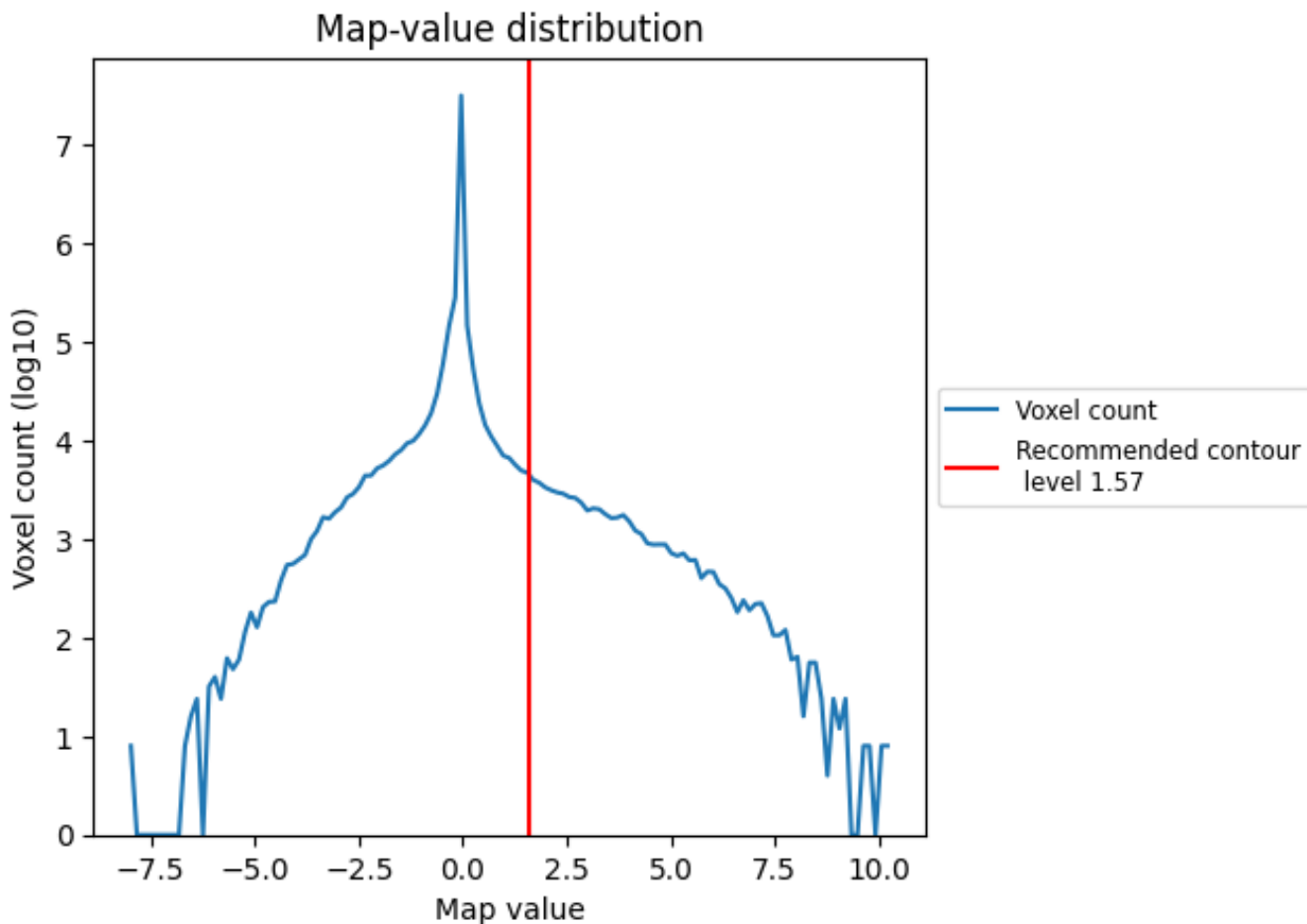
## 6.5 Mask visualisation

This section was not generated. No masks/segmentation were deposited.

## 7 Map analysis [i](#)

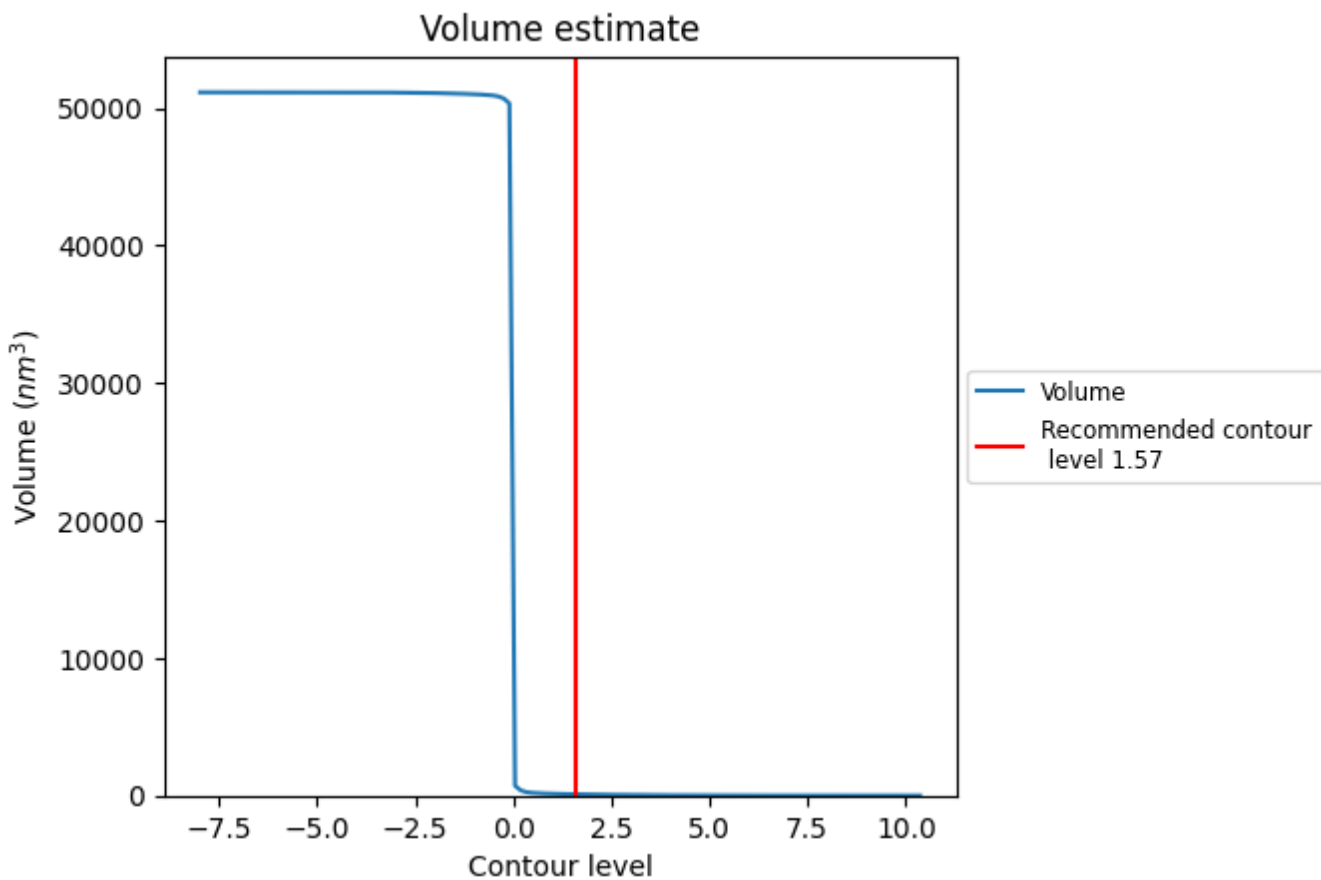
This section contains the results of statistical analysis of the map.

### 7.1 Map-value distribution [i](#)



The map-value distribution is plotted in 128 intervals along the x-axis. The y-axis is logarithmic. A spike in this graph at zero usually indicates that the volume has been masked.

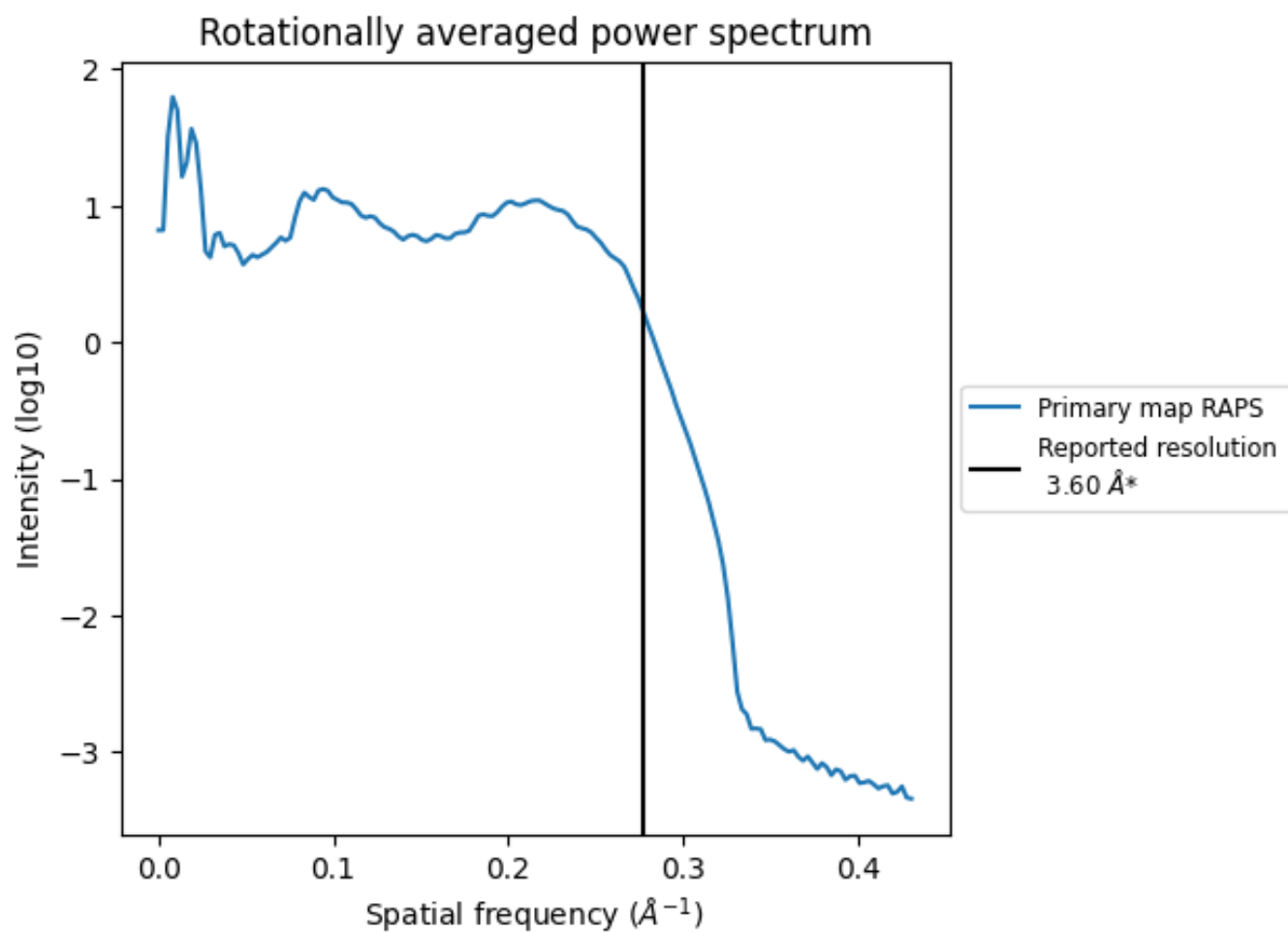
## 7.2 Volume estimate [i](#)



The volume at the recommended contour level is 93 nm<sup>3</sup>; this corresponds to an approximate mass of 84 kDa.

The volume estimate graph shows how the enclosed volume varies with the contour level. The recommended contour level is shown as a vertical line and the intersection between the line and the curve gives the volume of the enclosed surface at the given level.

### 7.3 Rotationally averaged power spectrum [i](#)



\*Reported resolution corresponds to spatial frequency of  $0.278 \text{\AA}^{-1}$



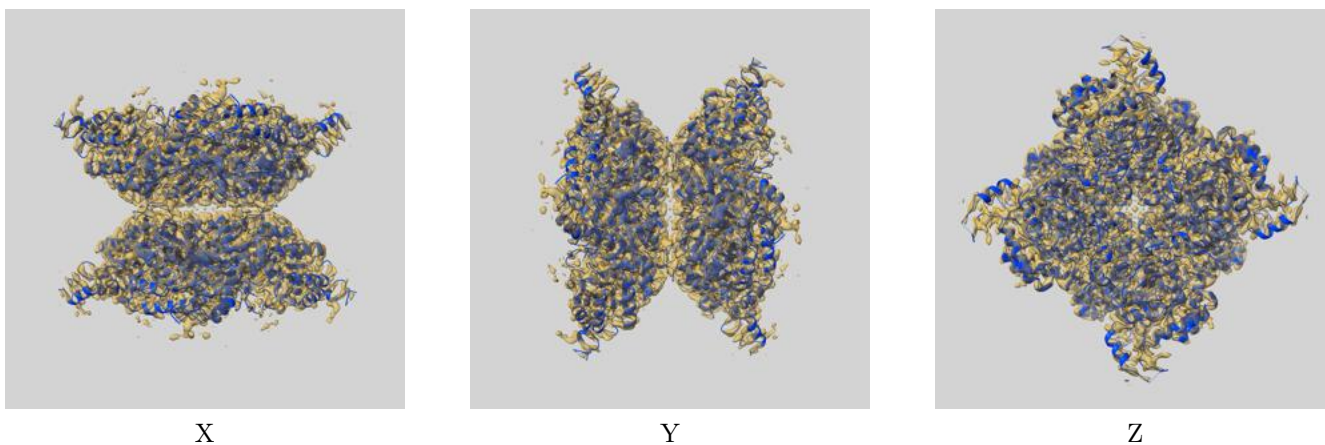
## 8 Fourier-Shell correlation

This section was not generated. No FSC curve or half-maps provided.

## 9 Map-model fit [i](#)

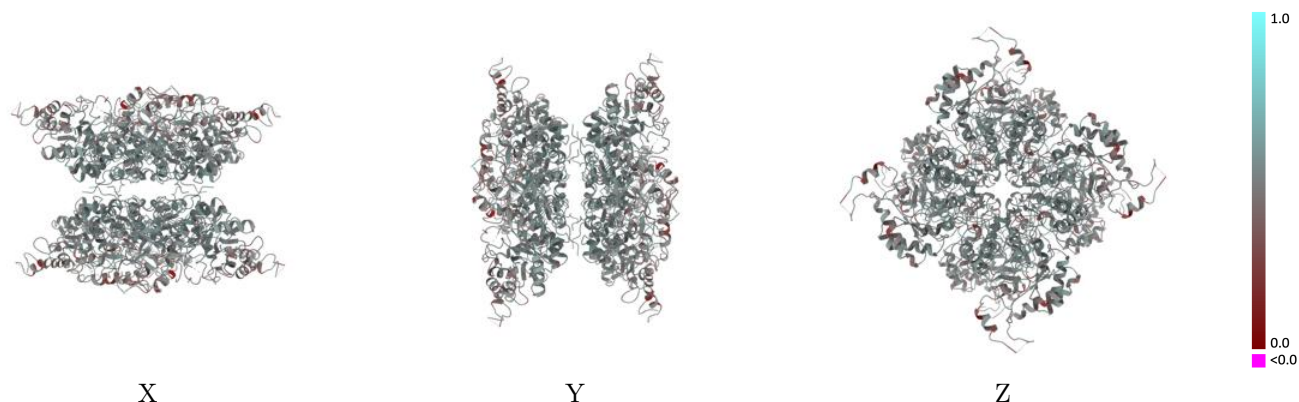
This section contains information regarding the fit between EMDB map EMD-24450 and PDB model 7RGI. Per-residue inclusion information can be found in section 3 on page 13.

### 9.1 Map-model overlay [i](#)



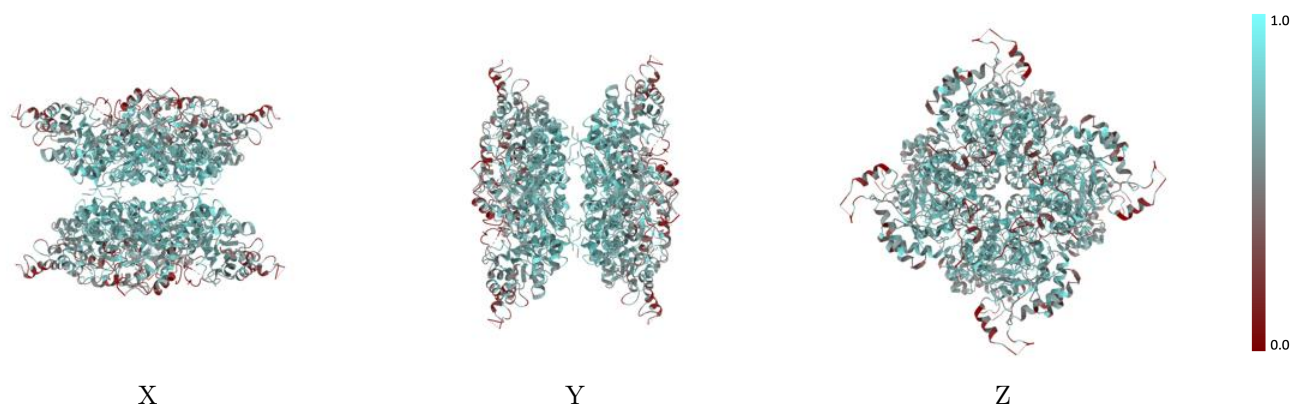
The images above show the 3D surface view of the map at the recommended contour level 1.57 at 50% transparency in yellow overlaid with a ribbon representation of the model coloured in blue. These images allow for the visual assessment of the quality of fit between the atomic model and the map.

## 9.2 Q-score mapped to coordinate model [\(i\)](#)



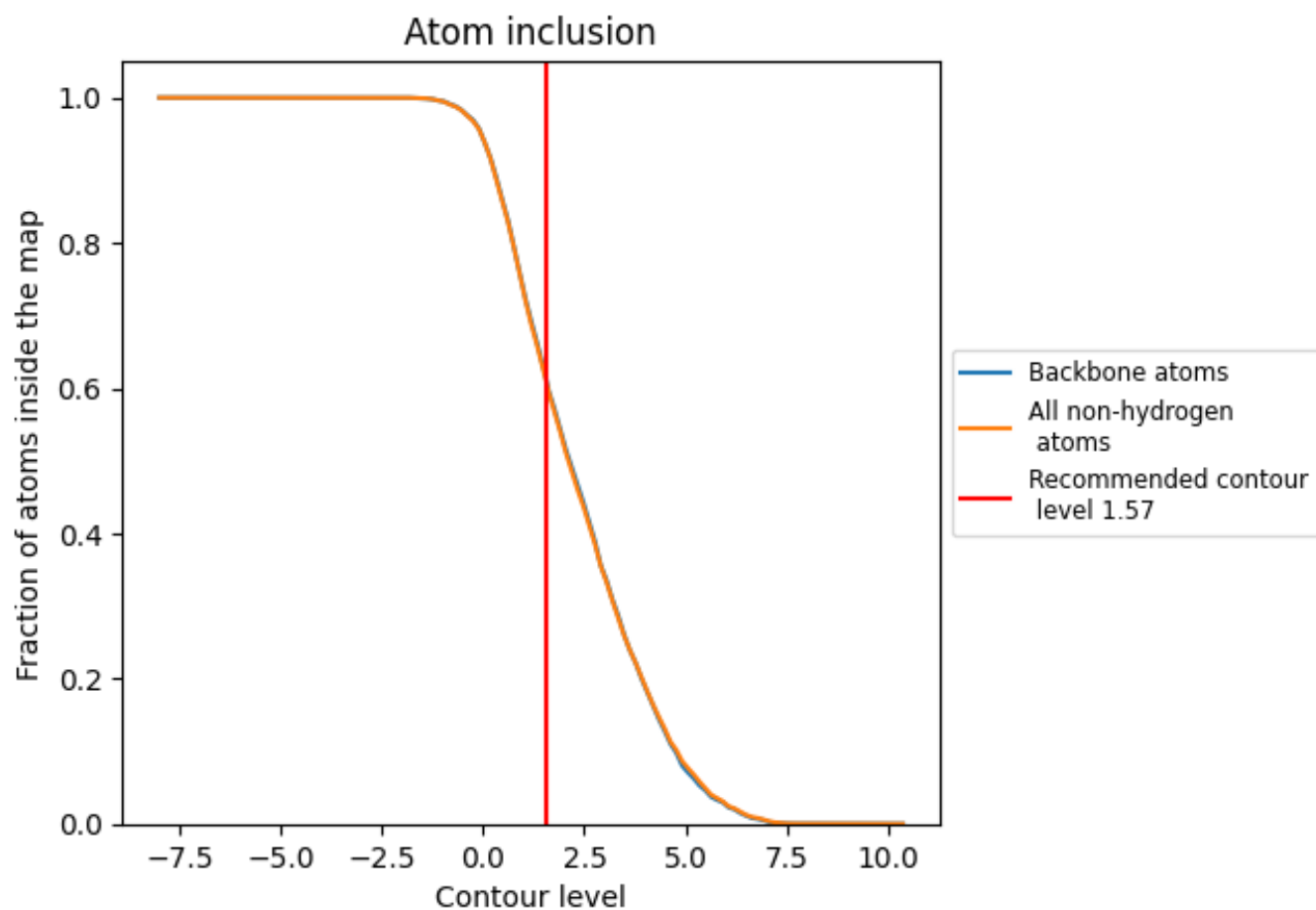
The images above show the model with each residue coloured according to its Q-score. This shows their resolvability in the map with higher Q-score values reflecting better resolvability. Please note: Q-score is calculating the resolvability of atoms, and thus high values are only expected at resolutions at which atoms can be resolved. Low Q-score values may therefore be expected for many entries.

## 9.3 Atom inclusion mapped to coordinate model [\(i\)](#)



The images above show the model with each residue coloured according to its atom inclusion. This shows to what extent they are inside the map at the recommended contour level (1.57).








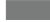










## 9.4 Atom inclusion [i](#)



At the recommended contour level, 61% of all backbone atoms, 61% of all non-hydrogen atoms, are inside the map.

## 9.5 Map-model fit summary [i](#)

The table lists the average atom inclusion at the recommended contour level (1.57) and Q-score for the entire model and for each chain.

Chain	Atom inclusion	Q-score
All	 0.6071	 0.4910
A	 0.6062	 0.4910
B	 0.6110	 0.4910
C	 0.6095	 0.4900
D	 0.6044	 0.4890
E	 0.6114	 0.4910
F	 0.6088	 0.4910
G	 0.6106	 0.4910
H	 0.6110	 0.4910

