



wwPDB X-ray Structure Validation Summary Report ⓘ

Aug 22, 2023 – 07:04 AM EDT

PDB ID : 2R4O
Title : Crystal structure of the long-chain fatty acid transporter FadL mutant delta NPA
Authors : Hearn, E.M.; Patel, D.R.; Lepore, B.W.; Indic, M.; van den Berg, B.
Deposited on : 2007-08-31
Resolution : 3.60 Å (reported)

This is a wwPDB X-ray Structure Validation Summary Report for a publicly released PDB entry.

We welcome your comments at validation@mail.wwpdb.org

A user guide is available at

<https://www.wwpdb.org/validation/2017/XrayValidationReportHelp>

with specific help available everywhere you see the ⓘ symbol.

The types of validation reports are described at

<http://www.wwpdb.org/validation/2017/FAQs#types>.

The following versions of software and data (see [references ⓘ](#)) were used in the production of this report:

MolProbity : 4.02b-467
Mogul : 1.8.5 (274361), CSD as541be (2020)
Xtriage (Phenix) : 1.13
EDS : 2.35
Percentile statistics : 20191225.v01 (using entries in the PDB archive December 25th 2019)
Refmac : 5.8.0158
CCP4 : 7.0.044 (Gargrove)
Ideal geometry (proteins) : Engh & Huber (2001)
Ideal geometry (DNA, RNA) : Parkinson et al. (1996)
Validation Pipeline (wwPDB-VP) : 2.35

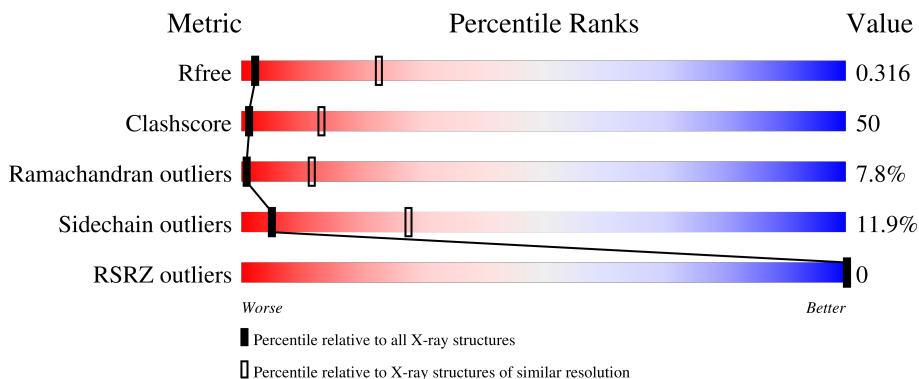
1 Overall quality at a glance

The following experimental techniques were used to determine the structure:

X-RAY DIFFRACTION

The reported resolution of this entry is 3.60 Å.

Percentile scores (ranging between 0-100) for global validation metrics of the entry are shown in the following graphic. The table shows the number of entries on which the scores are based.



Metric	Whole archive (#Entries)	Similar resolution (#Entries, resolution range(Å))
R_{free}	130704	1257 (3.70-3.50)
Clashscore	141614	1353 (3.70-3.50)
Ramachandran outliers	138981	1307 (3.70-3.50)
Sidechain outliers	138945	1307 (3.70-3.50)
RSRZ outliers	127900	1161 (3.70-3.50)

The table below summarises the geometric issues observed across the polymeric chains and their fit to the electron density. The red, orange, yellow and green segments of the lower bar indicate the fraction of residues that contain outliers for ≥ 3 , 2, 1 and 0 types of geometric quality criteria respectively. A grey segment represents the fraction of residues that are not modelled. The numeric value for each fraction is indicated below the corresponding segment, with a dot representing fractions $\leq 5\%$. The upper red bar (where present) indicates the fraction of residues that have poor fit to the electron density. The numeric value is given above the bar.

Mol	Chain	Length	Quality of chain
1	A	427	 39% 48% 11% ..
1	B	427	 40% 45% 12% ..

The following table lists non-polymeric compounds, carbohydrate monomers and non-standard residues in protein, DNA, RNA chains that are outliers for geometric or electron-density-fit criteria:

Mol	Type	Chain	Res	Chirality	Geometry	Clashes	Electron density
2	LDA	A	503	-	-	X	-
2	LDA	B	504	-	-	X	-

2 Entry composition [i](#)

There are 2 unique types of molecules in this entry. The entry contains 6550 atoms, of which 0 are hydrogens and 0 are deuteriums.

In the tables below, the ZeroOcc column contains the number of atoms modelled with zero occupancy, the AltConf column contains the number of residues with at least one atom in alternate conformation and the Trace column contains the number of residues modelled with at most 2 atoms.

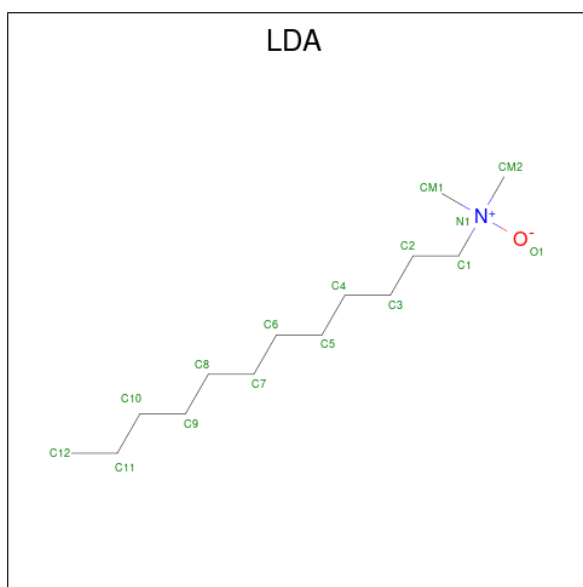
- Molecule 1 is a protein called Long-chain fatty acid transport protein.

Mol	Chain	Residues	Atoms					ZeroOcc	AltConf	Trace
			Total	C	N	O	S			
1	A	421	3243	2049	551	637	6	0	0	0
1	B	421	3243	2049	551	637	6	0	0	0

There are 20 discrepancies between the modelled and reference sequences:

Chain	Residue	Modelled	Actual	Comment	Reference
A	33	GLY	ASN	engineered mutation	UNP P10384
A	34	GLY	PRO	engineered mutation	UNP P10384
A	35	GLY	ALA	engineered mutation	UNP P10384
A	197	THR	ILE	conflict	UNP P10384
A	422	HIS	-	expression tag	UNP P10384
A	423	HIS	-	expression tag	UNP P10384
A	424	HIS	-	expression tag	UNP P10384
A	425	HIS	-	expression tag	UNP P10384
A	426	HIS	-	expression tag	UNP P10384
A	427	HIS	-	expression tag	UNP P10384
B	33	GLY	ASN	engineered mutation	UNP P10384
B	34	GLY	PRO	engineered mutation	UNP P10384
B	35	GLY	ALA	engineered mutation	UNP P10384
B	197	THR	ILE	conflict	UNP P10384
B	422	HIS	-	expression tag	UNP P10384
B	423	HIS	-	expression tag	UNP P10384
B	424	HIS	-	expression tag	UNP P10384
B	425	HIS	-	expression tag	UNP P10384
B	426	HIS	-	expression tag	UNP P10384
B	427	HIS	-	expression tag	UNP P10384

- Molecule 2 is LAURYL DIMETHYLAMINE-N-OXIDE (three-letter code: LDA) (formula: C₁₄H₃₁NO).

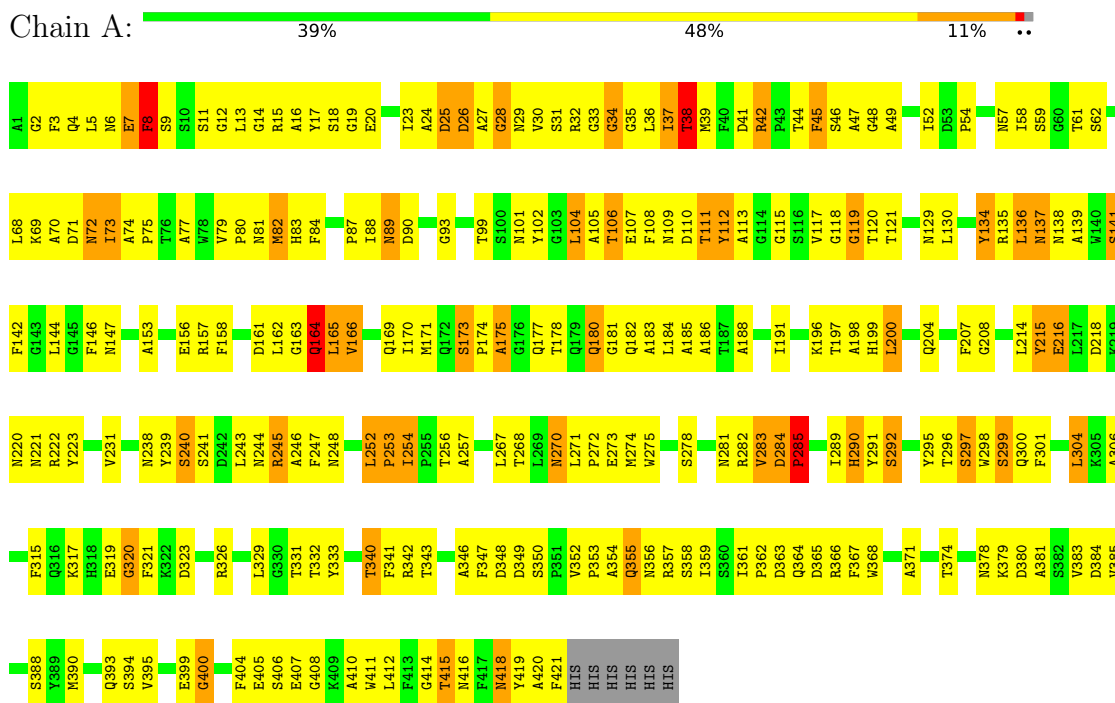


Mol	Chain	Residues	Atoms				ZeroOcc	AltConf
			Total	C	N	O		
2	A	1	Total	C	N	O	0	0
			16	14	1	1		
2	A	1	Total	C	N	O	0	0
			16	14	1	1		
2	B	1	Total	C	N	O	0	0
			16	14	1	1		
2	B	1	Total	C	N	O	0	0
			16	14	1	1		

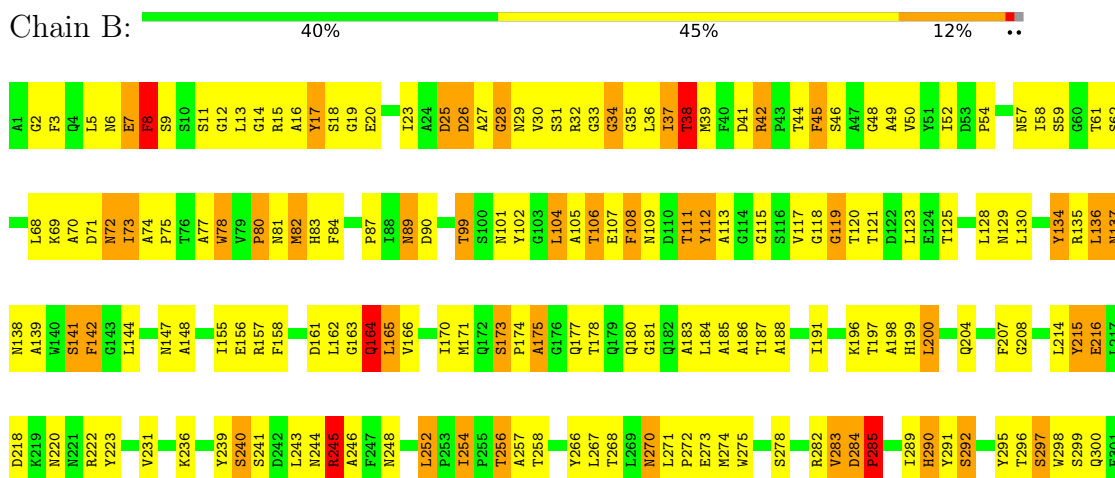
3 Residue-property plots

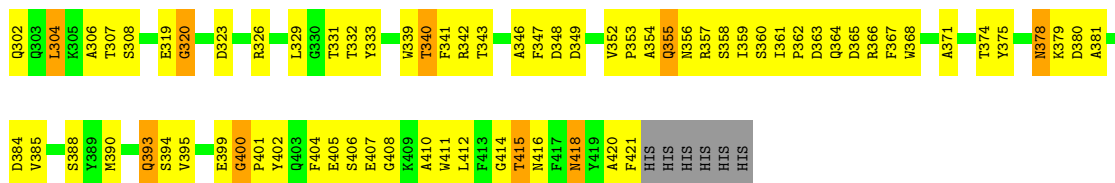
These plots are drawn for all protein, RNA, DNA and oligosaccharide chains in the entry. The first graphic for a chain summarises the proportions of the various outlier classes displayed in the second graphic. The second graphic shows the sequence view annotated by issues in geometry and electron density. Residues are color-coded according to the number of geometric quality criteria for which they contain at least one outlier: green = 0, yellow = 1, orange = 2 and red = 3 or more. A red dot above a residue indicates a poor fit to the electron density ($RSRZ > 2$). Stretches of 2 or more consecutive residues without any outlier are shown as a green connector. Residues present in the sample, but not in the model, are shown in grey.

- Molecule 1: Long-chain fatty acid transport protein



- Molecule 1: Long-chain fatty acid transport protein





4 Data and refinement statistics i

Property	Value	Source
Space group	P 21 21 21	Depositor
Cell constants a, b, c, α , β , γ	63.05Å 146.62Å 151.23Å 90.00° 90.00° 90.00°	Depositor
Resolution (Å)	10.00 – 3.60 41.54 – 3.58	Depositor EDS
% Data completeness (in resolution range)	98.7 (10.00-3.60) 98.4 (41.54-3.58)	Depositor EDS
R_{merge}	0.29	Depositor
R_{sym}	(Not available)	Depositor
$\langle I/\sigma(I) \rangle$ ¹	2.46 (at 3.57Å)	Xtrriage
Refinement program	CNS 1.1	Depositor
R, R_{free}	0.243 , 0.314 0.243 , 0.316	Depositor DCC
R_{free} test set	1695 reflections (10.07%)	wwPDB-VP
Wilson B-factor (Å ²)	44.2	Xtrriage
Anisotropy	0.837	Xtrriage
Bulk solvent k_{sol} (e/Å ³), B_{sol} (Å ²)	0.25 , 7.9	EDS
L-test for twinning ²	$\langle L \rangle = 0.45$, $\langle L^2 \rangle = 0.28$	Xtrriage
Estimated twinning fraction	0.024 for -h,l,k	Xtrriage
F_o, F_c correlation	0.86	EDS
Total number of atoms	6550	wwPDB-VP
Average B, all atoms (Å ²)	13.0	wwPDB-VP

Xtrriage's analysis on translational NCS is as follows: *The largest off-origin peak in the Patterson function is 13.49% of the height of the origin peak. No significant pseudotranslation is detected.*

¹Intensities estimated from amplitudes.

²Theoretical values of $\langle |L| \rangle$, $\langle L^2 \rangle$ for acentric reflections are 0.5, 0.333 respectively for untwinned datasets, and 0.375, 0.2 for perfectly twinned datasets.

5 Model quality

5.1 Standard geometry

Bond lengths and bond angles in the following residue types are not validated in this section: LDA

The Z score for a bond length (or angle) is the number of standard deviations the observed value is removed from the expected value. A bond length (or angle) with $|Z| > 5$ is considered an outlier worth inspection. RMSZ is the root-mean-square of all Z scores of the bond lengths (or angles).

Mol	Chain	Bond lengths		Bond angles	
		RMSZ	# Z >5	RMSZ	# Z >5
1	A	0.47	0/3331	0.72	0/4533
1	B	0.48	0/3331	0.73	0/4533
All	All	0.48	0/6662	0.73	0/9066

There are no bond length outliers.

There are no bond angle outliers.

There are no chirality outliers.

There are no planarity outliers.

5.2 Too-close contacts

In the following table, the Non-H and H(model) columns list the number of non-hydrogen atoms and hydrogen atoms in the chain respectively. The H(added) column lists the number of hydrogen atoms added and optimized by MolProbity. The Clashes column lists the number of clashes within the asymmetric unit, whereas Symm-Clashes lists symmetry-related clashes.

Mol	Chain	Non-H	H(model)	H(added)	Clashes	Symm-Clashes
1	A	3243	0	3020	313	0
1	B	3243	0	3020	320	0
2	A	32	0	62	14	0
2	B	32	0	62	12	0
All	All	6550	0	6164	635	0

The all-atom clashscore is defined as the number of clashes found per 1000 atoms (including hydrogen atoms). The all-atom clashscore for this structure is 50.

The worst 5 of 635 close contacts within the same asymmetric unit are listed below, sorted by their clash magnitude.

Atom-1	Atom-2	Interatomic distance (Å)	Clash overlap (Å)
1:B:346:ALA:HB3	1:B:368:TRP:HB2	1.37	1.05
1:B:75:PRO:HD2	1:B:105:ALA:HB1	1.39	1.05
1:A:75:PRO:HD2	1:A:105:ALA:HB1	1.38	1.04
1:A:346:ALA:HB3	1:A:368:TRP:HB2	1.38	1.04
1:B:89:ASN:CG	1:B:90:ASP:H	1.64	1.00

There are no symmetry-related clashes.

5.3 Torsion angles [i](#)

5.3.1 Protein backbone [i](#)

In the following table, the Percentiles column shows the percent Ramachandran outliers of the chain as a percentile score with respect to all X-ray entries followed by that with respect to entries of similar resolution.

The Analysed column shows the number of residues for which the backbone conformation was analysed, and the total number of residues.

Mol	Chain	Analysed	Favoured	Allowed	Outliers	Percentiles	
1	A	419/427 (98%)	320 (76%)	67 (16%)	32 (8%)	1	12
1	B	419/427 (98%)	321 (77%)	65 (16%)	33 (8%)	1	11
All	All	838/854 (98%)	641 (76%)	132 (16%)	65 (8%)	1	11

5 of 65 Ramachandran outliers are listed below:

Mol	Chain	Res	Type
1	A	7	GLU
1	A	8	PHE
1	A	34	GLY
1	A	38	THR
1	A	136	LEU

5.3.2 Protein sidechains [i](#)

In the following table, the Percentiles column shows the percent sidechain outliers of the chain as a percentile score with respect to all X-ray entries followed by that with respect to entries of similar resolution.

The Analysed column shows the number of residues for which the sidechain conformation was analysed, and the total number of residues.

Mol	Chain	Analysed	Rotameric	Outliers	Percentiles	
1	A	329/335 (98%)	290 (88%)	39 (12%)	5	27
1	B	329/335 (98%)	290 (88%)	39 (12%)	5	27
All	All	658/670 (98%)	580 (88%)	78 (12%)	5	27

5 of 78 residues with a non-rotameric sidechain are listed below:

Mol	Chain	Res	Type
1	B	164	GLN
1	B	290	HIS
1	B	171	MET
1	B	245	ARG
1	B	393	GLN

Sometimes sidechains can be flipped to improve hydrogen bonding and reduce clashes. 5 of 29 such sidechains are listed below:

Mol	Chain	Res	Type
1	A	416	ASN
1	B	393	GLN
1	B	81	ASN
1	B	302	GLN
1	B	72	ASN

5.3.3 RNA [i](#)

There are no RNA molecules in this entry.

5.4 Non-standard residues in protein, DNA, RNA chains [i](#)

There are no non-standard protein/DNA/RNA residues in this entry.

5.5 Carbohydrates [i](#)

There are no monosaccharides in this entry.

5.6 Ligand geometry [i](#)

4 ligands are modelled in this entry.

In the following table, the Counts columns list the number of bonds (or angles) for which Mogul statistics could be retrieved, the number of bonds (or angles) that are observed in the model and the number of bonds (or angles) that are defined in the Chemical Component Dictionary. The Link column lists molecule types, if any, to which the group is linked. The Z score for a bond length (or angle) is the number of standard deviations the observed value is removed from the expected value. A bond length (or angle) with $|Z| > 2$ is considered an outlier worth inspection. RMSZ is the root-mean-square of all Z scores of the bond lengths (or angles).

Mol	Type	Chain	Res	Link	Bond lengths			Bond angles		
					Counts	RMSZ	# Z > 2	Counts	RMSZ	# Z > 2
2	LDA	B	502	-	12,15,15	2.05	1 (8%)	14,17,17	1.65	3 (21%)
2	LDA	A	501	-	12,15,15	1.94	1 (8%)	14,17,17	1.60	3 (21%)
2	LDA	B	504	-	12,15,15	2.18	1 (8%)	14,17,17	1.63	4 (28%)
2	LDA	A	503	-	12,15,15	2.01	1 (8%)	14,17,17	1.34	1 (7%)

In the following table, the Chirals column lists the number of chiral outliers, the number of chiral centers analysed, the number of these observed in the model and the number defined in the Chemical Component Dictionary. Similar counts are reported in the Torsion and Rings columns. '-' means no outliers of that kind were identified.

Mol	Type	Chain	Res	Link	Chirals	Torsions	Rings
2	LDA	B	502	-	-	5/13/13/13	-
2	LDA	A	501	-	-	7/13/13/13	-
2	LDA	B	504	-	-	10/13/13/13	-
2	LDA	A	503	-	-	7/13/13/13	-

All (4) bond length outliers are listed below:

Mol	Chain	Res	Type	Atoms	Z	Observed(Å)	Ideal(Å)
2	B	504	LDA	O1-N1	-7.34	1.25	1.42
2	B	502	LDA	O1-N1	-6.72	1.26	1.42
2	A	503	LDA	O1-N1	-6.56	1.26	1.42
2	A	501	LDA	O1-N1	-6.35	1.27	1.42

The worst 5 of 11 bond angle outliers are listed below:

Mol	Chain	Res	Type	Atoms	Z	Observed(°)	Ideal(°)
2	B	502	LDA	CM1-N1-C1	-3.90	102.04	110.23
2	A	501	LDA	CM1-N1-C1	-3.74	102.37	110.23
2	B	504	LDA	CM1-N1-C1	-3.43	103.03	110.23
2	A	501	LDA	O1-N1-C1	2.47	115.33	109.27
2	A	503	LDA	CM1-N1-C1	-2.44	105.11	110.23

There are no chirality outliers.

5 of 29 torsion outliers are listed below:

Mol	Chain	Res	Type	Atoms
2	A	501	LDA	C2-C1-N1-CM1
2	A	501	LDA	C2-C1-N1-CM2
2	A	501	LDA	N1-C1-C2-C3
2	A	503	LDA	C2-C1-N1-O1
2	A	503	LDA	C2-C1-N1-CM1

There are no ring outliers.

4 monomers are involved in 26 short contacts:

Mol	Chain	Res	Type	Clashes	Symm-Clashes
2	B	502	LDA	3	0
2	A	501	LDA	3	0
2	B	504	LDA	9	0
2	A	503	LDA	11	0

5.7 Other polymers [i](#)

There are no such residues in this entry.

5.8 Polymer linkage issues [i](#)

There are no chain breaks in this entry.

6 Fit of model and data [i](#)

6.1 Protein, DNA and RNA chains [i](#)

In the following table, the column labelled ‘#RSRZ> 2’ contains the number (and percentage) of RSRZ outliers, followed by percent RSRZ outliers for the chain as percentile scores relative to all X-ray entries and entries of similar resolution. The OWAB column contains the minimum, median, 95th percentile and maximum values of the occupancy-weighted average B-factor per residue. The column labelled ‘Q< 0.9’ lists the number of (and percentage) of residues with an average occupancy less than 0.9.

Mol	Chain	Analysed	<RSRZ>	#RSRZ>2	OWAB(Å ²)	Q<0.9
1	A	421/427 (98%)	-0.57	0 100 100	0, 8, 41, 69	0
1	B	421/427 (98%)	-0.56	0 100 100	0, 7, 38, 79	0
All	All	842/854 (98%)	-0.56	0 100 100	0, 7, 40, 79	0

There are no RSRZ outliers to report.

6.2 Non-standard residues in protein, DNA, RNA chains [i](#)

There are no non-standard protein/DNA/RNA residues in this entry.

6.3 Carbohydrates [i](#)

There are no monosaccharides in this entry.

6.4 Ligands [i](#)

In the following table, the Atoms column lists the number of modelled atoms in the group and the number defined in the chemical component dictionary. The B-factors column lists the minimum, median, 95th percentile and maximum values of B factors of atoms in the group. The column labelled ‘Q< 0.9’ lists the number of atoms with occupancy less than 0.9.

Mol	Type	Chain	Res	Atoms	RSCC	RSR	B-factors(Å ²)	Q<0.9
2	LDA	A	501	16/16	0.83	0.32	8,8,8,8	0
2	LDA	A	503	16/16	0.84	0.40	8,8,8,8	0
2	LDA	B	502	16/16	0.86	0.35	8,8,8,8	0
2	LDA	B	504	16/16	0.90	0.39	8,8,8,8	0

6.5 Other polymers [i](#)

There are no such residues in this entry.